

File : c:/idx3/SYSTEM/SARMEAS3/data/Normal/99120609_ZOOM.VLT
Start : 6-Dec-99 12:31:21 pm End : 6-Dec-99 12:43:24 pm

Radio Type : SAMSUNG
Model Number : A3LSCH620
Serial Number : 001
Frequency : 836.49 MHz
Peak Trans. Pwr : 0.270 W
Start Trans. Pwr : 0.270 W
Antenna Type : Helical
Antenna Posn. : In
Phantom Type : Body
Phantom Posn. : Abdomen
Scan Type : ZOOM/SAR
Probe Name : PCTEST
Field Type : E Field
Orientation : 0 Degrees

Mixture Type = Muscle
Mixture Dielectric Constant = 51.700
Mixture Conductivity = 1.100

Comment :
SAMSUNG DUAL MODE PHONE - BODY SAR
CHAN. 383 FM MODE HOLSTER 1 IN. SPACING
+24.3 dB CONDUCTED

Robot : PCTEST

Probe Offset = 0.25 cm
Sensor Factor = 0.0108
Conversion Factor = 0.895

PCTEST Amplifier Channel Settings : 0.168 0.136 0.132

Max Location : X = 0.750, Y = -5.250, Z = 0.000 (cm) Value = 18.551

Measured Values (volts) =
1.848E-002 1.481E-002 1.217E-002 1.005E-002 8.584E-003 7.742E-003
7.279E-003 7.164E-003 7.098E-003 6.605E-003 5.885E-003 4.834E-003
3.506E-003 2.216E-003 1.518E-003 1.090E-003 1.176E-003 1.667E-003
2.390E-003 2.986E-003 3.119E-003

Calc. Voltage @ Surface (Vs) = 0.0228

Voltage @ 1.00 cm (Vt) = 0.0101

Ave. Voltage (Vs+Vt)/2 = 0.0164

Ave. SAR over 1 g (mW/g) = 1.3601

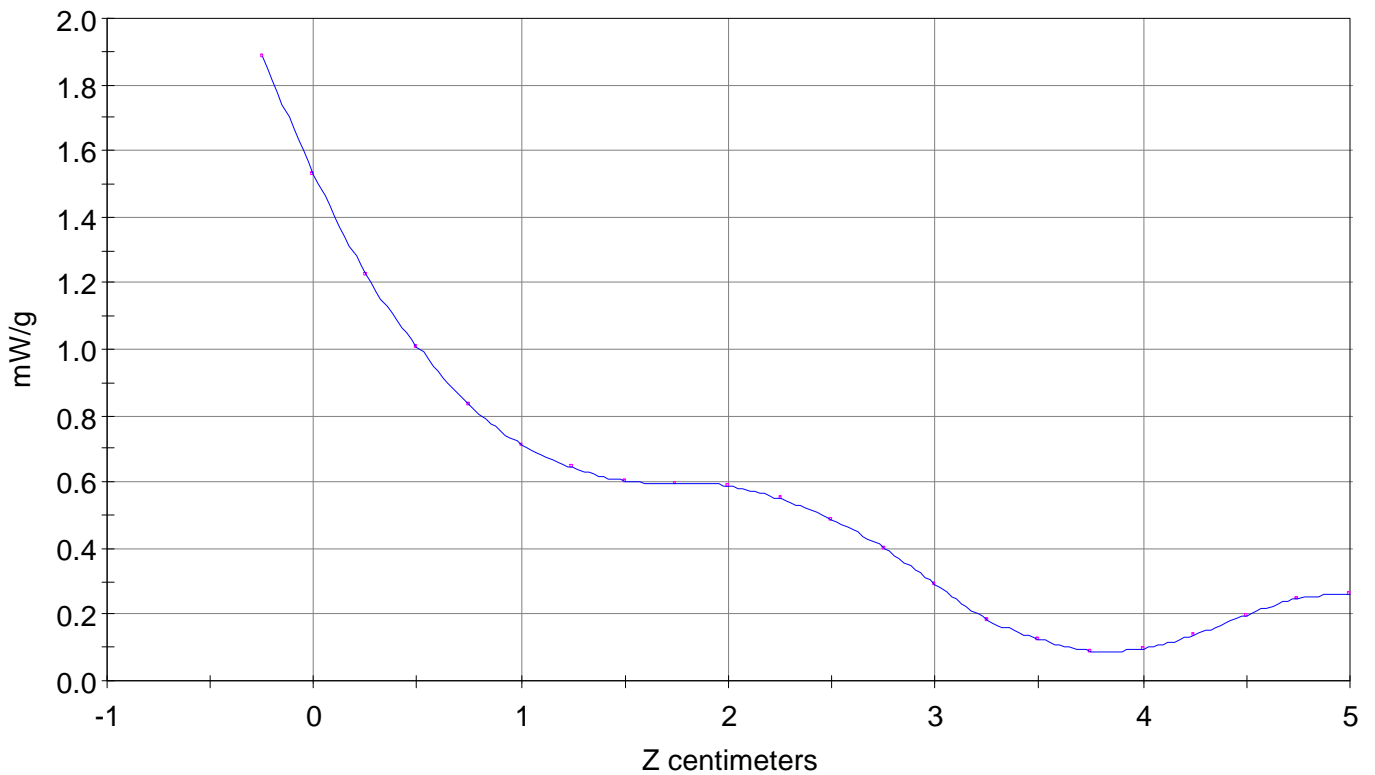
SAR Scan

File : 99120609_ZOOM

Start : 6-Dec-99 12:31:21 pm End : 6-Dec-99 12:43:24 pm

SAMSUNG/A3LSCH620/001;836.49MHz;W;Helical/In;

Body/Abdomen;ZOOM/SAR;PCTEST/E Field/0 DegreesMuscle/51.700/1.100

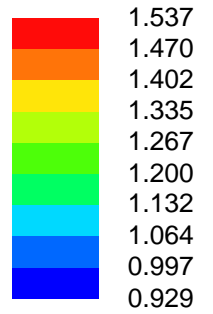
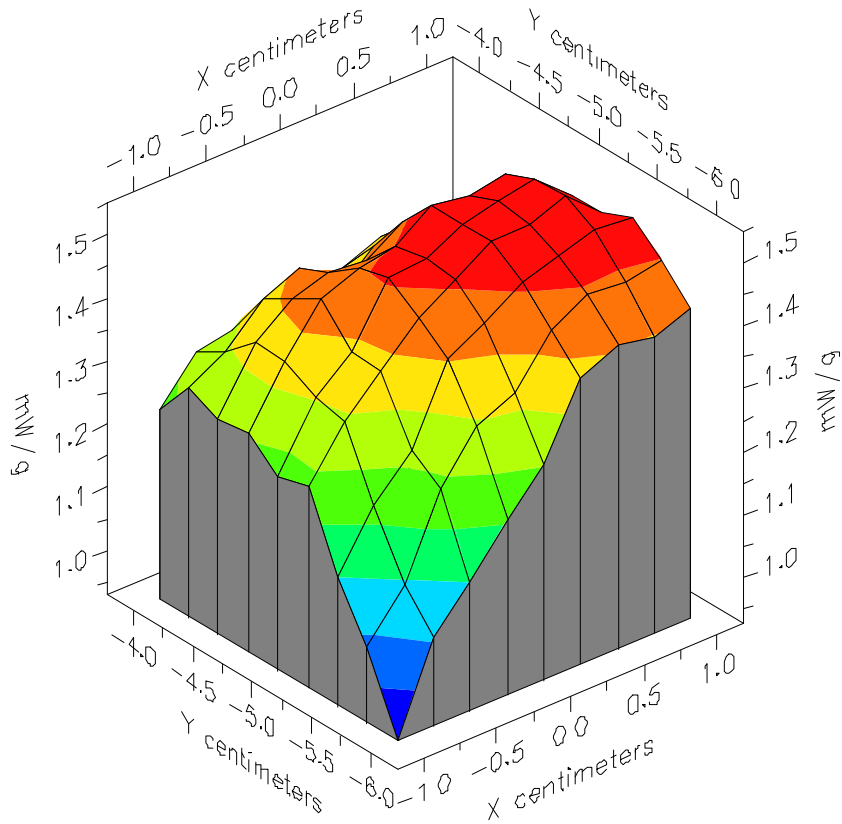


File : 99120609_ZOOM

Start : 6-Dec-99 12:31:21 pm End : 6-Dec-99 12:43:24 pm

SAMSUNG/A3LSCH620/001;836.49MHz;W;Helical/In;

Body/Abdomen;ZOOM/SAR;PCTEST/E Field/0 DegreesMuscle/51.700/1.100

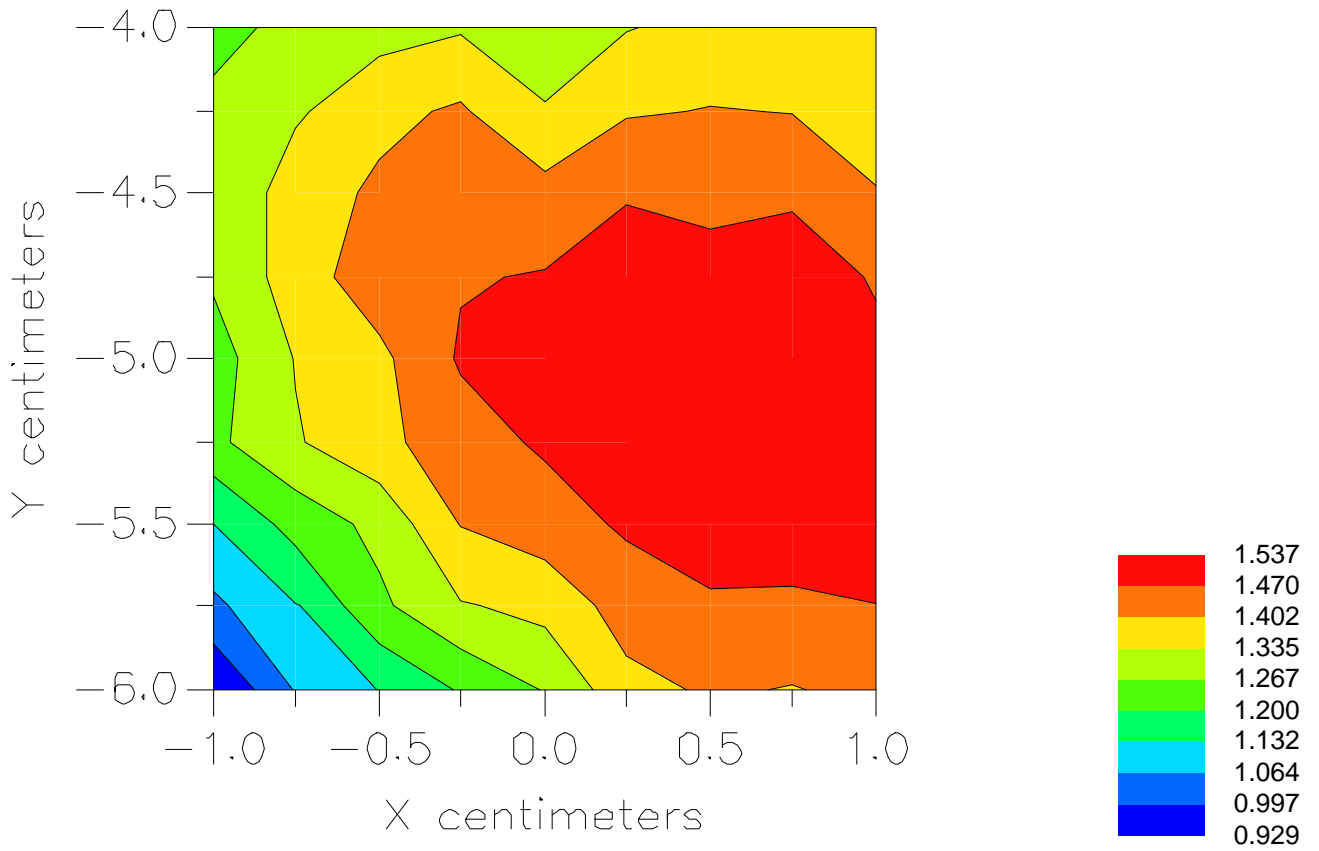


File : 99120609_ZOOM

Start : 6-Dec-99 12:31:21 pm End : 6-Dec-99 12:43:24 pm

SAMSUNG/A3LSCH620/001;836.49MHz;W;Helical/In;

Body/Abdomen;ZOOM/SAR;PCTEST/E Field/0 DegreesMuscle/51.700/1.100



File : c:/idx3/SYSTEM/SARMEAS3/data/Normal/99120613_ZOOM.VLT

Start : 6-Dec-99 01:20:52 pm End : 6-Dec-99 01:31:43 pm

Radio Type : SAMSUNG
Model Number : A3LSCH620
Serial Number : 001
Frequency : 836.49 MHz
Peak Trans. Pwr : 0.270 W
Start Trans. Pwr : 0.270 W
Antenna Type : Helical
Antenna Posn. : Out
Phantom Type : Body
Phantom Posn. : Abdomen
Scan Type : ZOOM/SAR
Probe Name : PCTEST
Field Type : E Field
Orientation : 0 Degrees

Mixture Type = Muscle
Mixture Dielectric Constant = 51.700
Mixture Conductivity = 1.100

Comment :

SAMSUNG DUAL MODE PHONE - BODY SAR
CHAN. 383 FM MODE HOLSTER 1 IN. SPACING
+24.3 dB CONDUCTED

Robot : PCTEST

Probe Offset = 0.25 cm
Sensor Factor = 0.0108
Conversion Factor = 0.895

PCTEST Amplifier Channel Settings : 0.168 0.136 0.132

Max Location : X = -1.000, Y = -4.250, Z = 0.000 (cm) Value = 15.760

Measured Values (volts) =

1.804E-002	1.412E-002	1.170E-002	9.349E-003	7.772E-003	6.648E-003
6.063E-003	5.624E-003	5.603E-003	5.524E-003	5.260E-003	4.683E-003
3.787E-003	2.805E-003	1.800E-003	1.055E-003	5.474E-004	4.835E-004
7.983E-004	1.331E-003	1.798E-003			

Calc. Voltage @ Surface (Vs) = 0.0224

Voltage @ 1.00 cm (Vt) = 0.0093

Ave. Voltage (Vs+Vt)/2 = 0.0159

Ave. SAR over 1 g (mW/g) = 1.3157

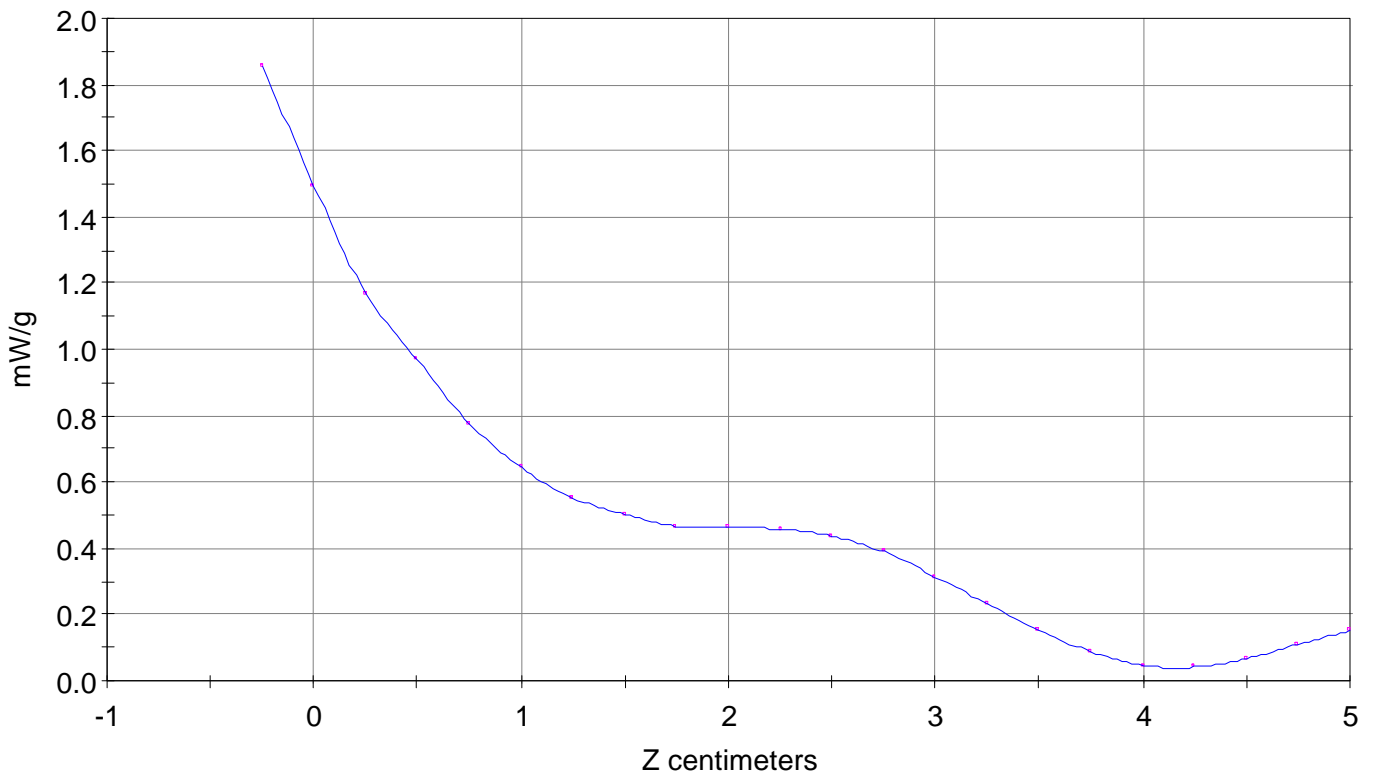
SAR Scan

File : 99120613_ZOOM

Start : 6-Dec-99 01:20:52 pm End : 6-Dec-99 01:31:43 pm

SAMSUNG/A3LSCH620/001;836.49MHz;W;Helical/Out;

Body/Abdomen;ZOOM/SAR;PCTEST/E Field/0 DegreesMuscle/51.700/1.100

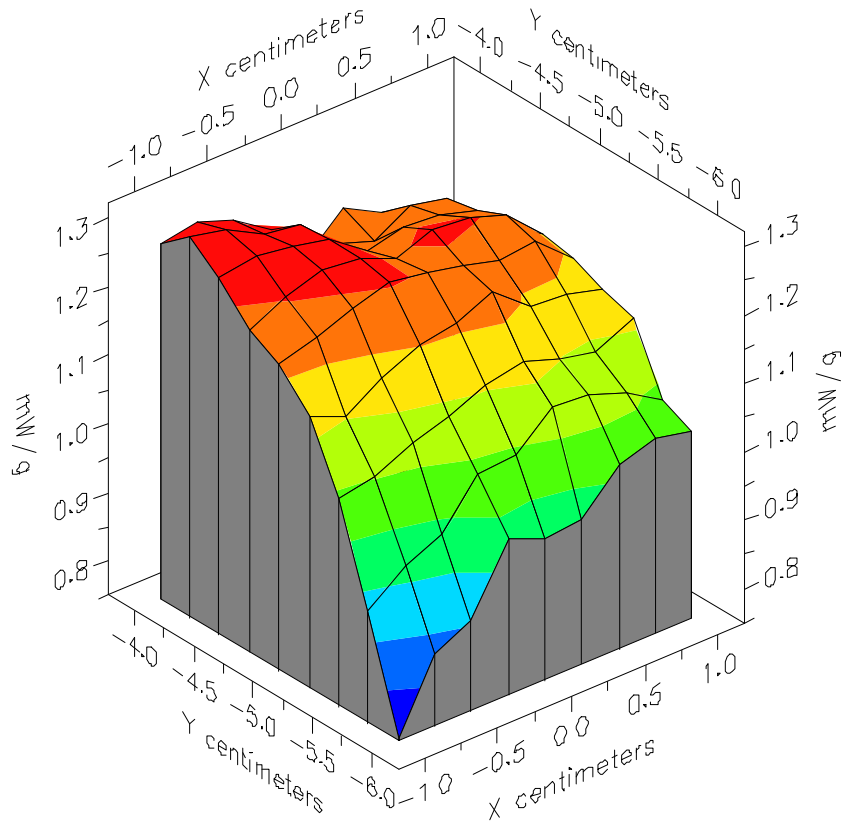


File : 99120613_ZOOM

Start : 6-Dec-99 01:20:52 pm End : 6-Dec-99 01:31:43 pm

SAMSUNG/A3LSCH620/001;836.49MHz;W;Helical/Out;

Body/Abdomen;ZOOM/SAR;PCTEST/E Field/0 DegreesMuscle/51.700/1.100



File : 99120613_ZOOM

Start : 6-Dec-99 01:20:52 pm End : 6-Dec-99 01:31:43 pm

SAMSUNG/A3LSCH620/001;836.49MHz;W;Helical/Out;

Body/Abdomen;ZOOM/SAR;PCTEST/E Field/0 DegreesMuscle/51.700/1.100

