

# EUT SCH-620

Generic Twin Phantom; Left Hand Section; Probe: ET3DV5 - SN1368

835MHz:  $\sigma = 0.79$  mho/m  $\epsilon_r = 43.4$   $\rho = 1.00$  g/cm<sup>3</sup>

File #638

Antenna Position In

Crest Factor 1.0

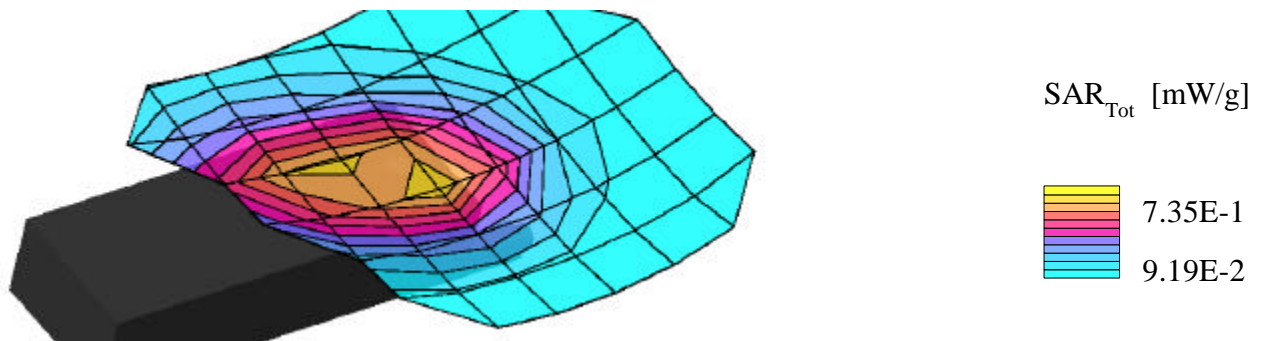
SAR (1g): 0.984 mW/g

Samsung Dual Mode Phone

Channel 991 FM Mode

Conducted Power - 24.3dBm

Cable offset - 1.4dBm



# EUT SCH-620

Generic Twin Phantom; Left Hand Section; Probe: ET3DV5 - SN1368

835MHz:  $\sigma = 0.79$  mho/m  $\epsilon_r = 43.4$   $\rho = 1.00$  g/cm<sup>3</sup>

File #639

Antenna Position Out

Crest Factor 1.0

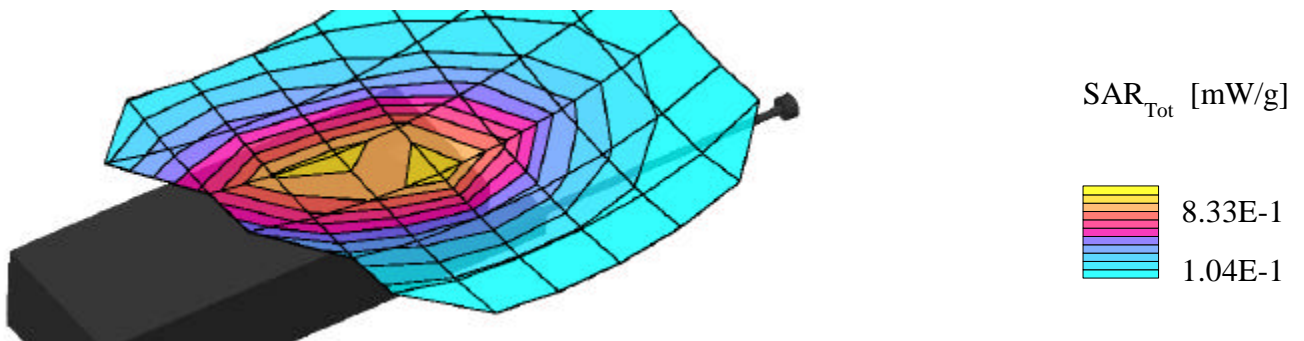
SAR (1g): 1.07 mW/g

Samsung Dual Mode Phone

Channel 991 FM Mode

Conducted Power - 24.3dBm

Cable offset - 1.4dBm



# EUT SCH-620

Generic Twin Phantom; Left Hand Section; Probe: ET3DV5 - SN1368

835MHz:  $\sigma = 0.79$  mho/m  $\epsilon_r = 43.4$   $\rho = 1.00$  g/cm<sup>3</sup>

File #637

Antenna Position In

Crest Factor 1.0

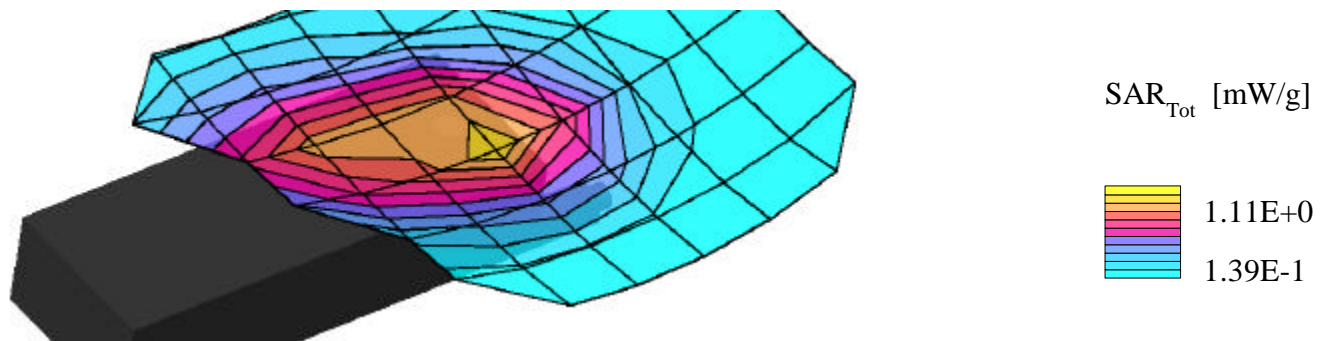
SAR (1g): 1.36 mW/g

Samsung Dual Mode Phone

Channel 383 FM Mode

Conducted Power - 24.3dBm

Cable offset - 1.4dBm



# EUT SCH-620

Generic Twin Phantom; Left Hand Section; Probe: ET3DV5 - SN1368

835MHz:  $\sigma = 0.79$  mho/m  $\epsilon_r = 43.4$   $\rho = 1.00$  g/cm<sup>3</sup>

File #636

Antenna Position Out

Crest Factor 1.0

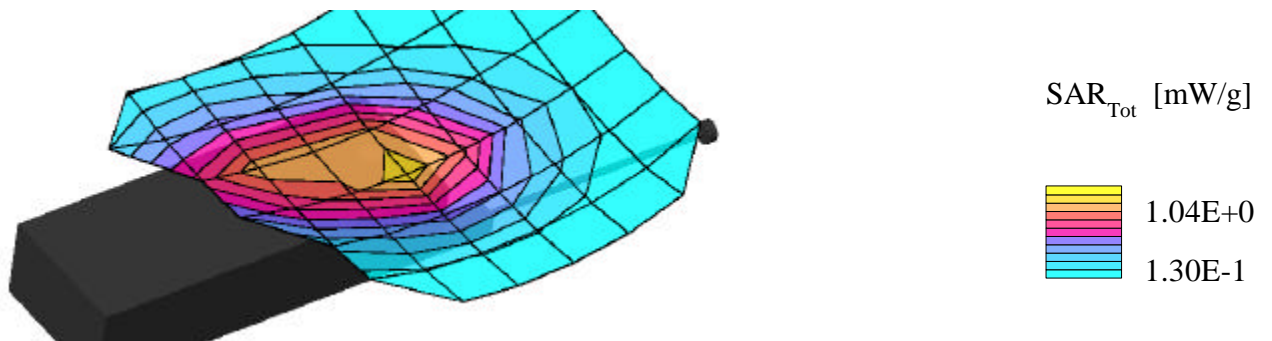
SAR (1g): 1.29 mW/g

Samsung Dual Mode Phone

Channel 383 FM Mode

Conducted Power - 24.3dBm

Cable offset - 1.4dBm



# EUT SCH-620

Generic Twin Phantom; Left Hand Section; Probe: ET3DV5 - SN1368

835MHz:  $\sigma = 0.79$  mho/m  $\epsilon_r = 43.4$   $\rho = 1.00$  g/cm<sup>3</sup>

File #634

Antenna Position In

Crest Factor 1.0

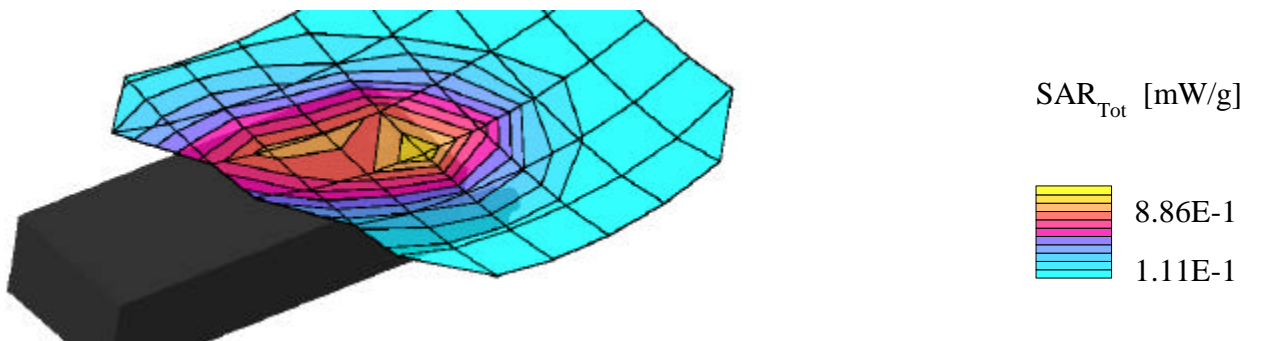
SAR (1g): 1.12 mW/g

Samsung Dual Mode Phone

Channel 799 FM Mode

Conducted Power - 24.3dBm

Cable offset - 1.4dBm



# EUT SCH-620

Generic Twin Phantom; Left Hand Section; Probe: ET3DV5 - SN1368

835MHz:  $\sigma = 0.79$  mho/m  $\epsilon_r = 43.4$   $\rho = 1.00$  g/cm<sup>3</sup>

File #635

Antenna Position Out

Crest Factor 1.0

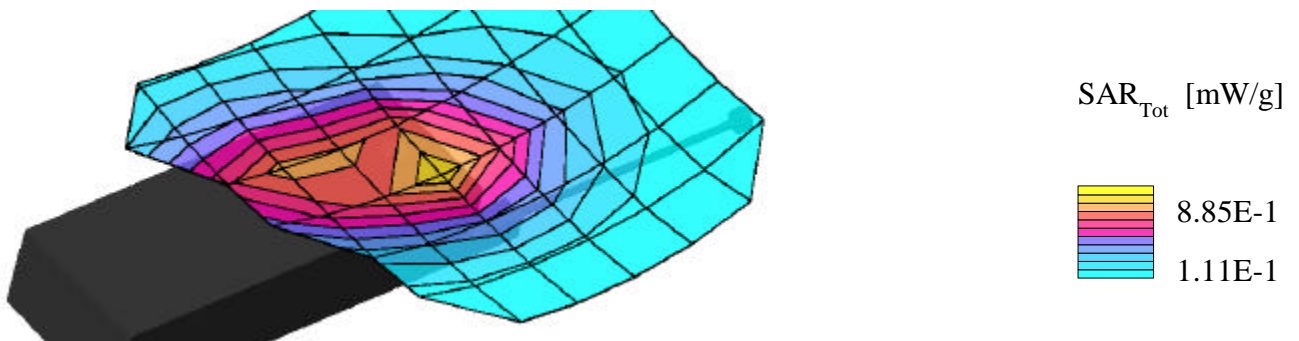
SAR (1g): 1.09 mW/g

Samsung Dual Mode Phone

Channel 799 FM Mode

Conducted Power - 24.3dBm

Cable offset - 1.4dBm



# EUT SCH-620

Generic Twin Phantom; Left Hand Section; Probe: ET3DV5 - SN1368

835MHz:  $\sigma = 0.79$  mho/m  $\epsilon_r = 43.4$   $\rho = 1.00$  g/cm<sup>3</sup>

File #646

Antenna Position In

Crest Factor 1.0

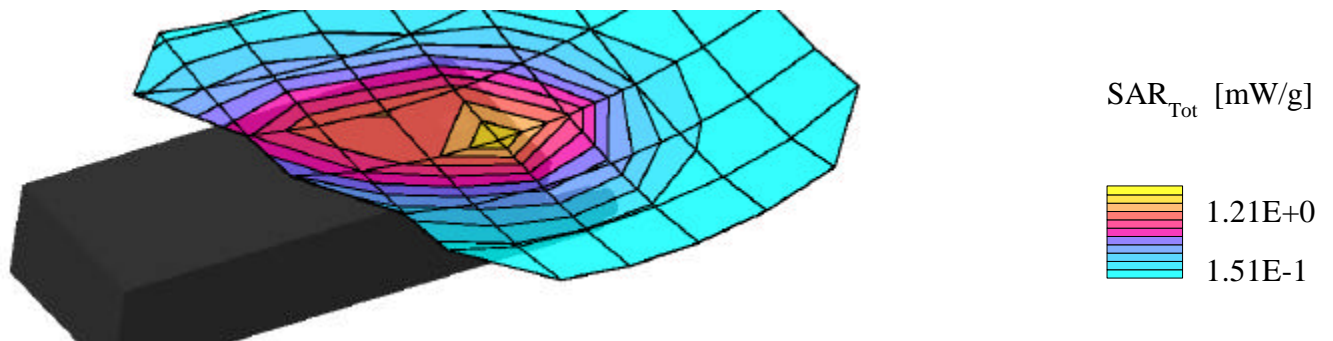
SAR (1g): 1.42 mW/g

Samsung Dual Mode Phone

Channel 363 CDMA Mode

Conducted Power - 24.5dBm

Cable loss - 1.4dBm



# EUT SCH-620

Generic Twin Phantom; Left Hand Section; Probe: ET3DV5 - SN1368

835MHz:  $\sigma = 0.79$  mho/m  $\epsilon_r = 43.4$   $\rho = 1.00$  g/cm<sup>3</sup>

File #647

Antenna Position Out

Crest Factor 1.0

SAR (1g): 1.27 mW/g

Samsung Dual Mode Phone

Channel 363 CDMA Mode

Conducted Power - 24.5dBm

Cable loss - 1.4dBm

