

File : c:/idx3/SYSTEM/SARMEAS3/data/Normal/98091021_ZOOM.VLT
Start : 10-Sep-98 04:41:17 pm End : 10-Sep-98 04:52:57 pm

Radio Type : SAMSUNG
Model Number : SCH-370
Serial Number : 00002
Frequency : 824.04 MHz
Peak Trans. Pwr : 0.600 W
Start Trans. Pwr: 0.600 W
Antenna Type : Helical
Antenna Posn. : In
Phantom Type : Head
Phantom Posn. : Left Ear
Scan Type : ZOOM/SAR
Probe Name : PCTEST
Field Type : E Field
Orientation : 0 Degrees

Mixture Type = Brain
Mixture Dielectric Constant = 43.400
Mixture Conductivity = 0.900

Comment :
CHAN 991 FM MODE
SAMSUNG DUAL MODE PHONE
PCTEST ENGINEERING LABORATORY

Robot : PCTEST

Probe Offset = 0.25 cm
Sensor Factor = 0.0108
Conversion Factor = 0.790

PCTEST Amplifier Channel Settings : 0.168 0.136 0.132

Diode Coefficients:

Channel 1	An=-10.851	Bn=86.223	Cn=38.593	Dn=-0.016	Mn=0.026	Yn=0.000
Channel 2	An=-21.618	Bn=92.335	Cn=34.909	Dn=-0.019	Mn=0.029	Yn=0.000
Channel 3	An=-11.171	Bn=50.619	Cn=19.002	Dn=-0.025	Mn=0.052	Yn=0.001

Max Location : X = 1.750, Y = -0.750, Z = 0.000 (cm) Value = 19.177

Measured Values (volts) =
1.831E-002 1.309E-002 7.009E-003 3.016E-003 9.237E-004 7.635E-004
-5.298E-004 -1.438E-004 -6.021E-004 -6.053E-004 -8.432E-004

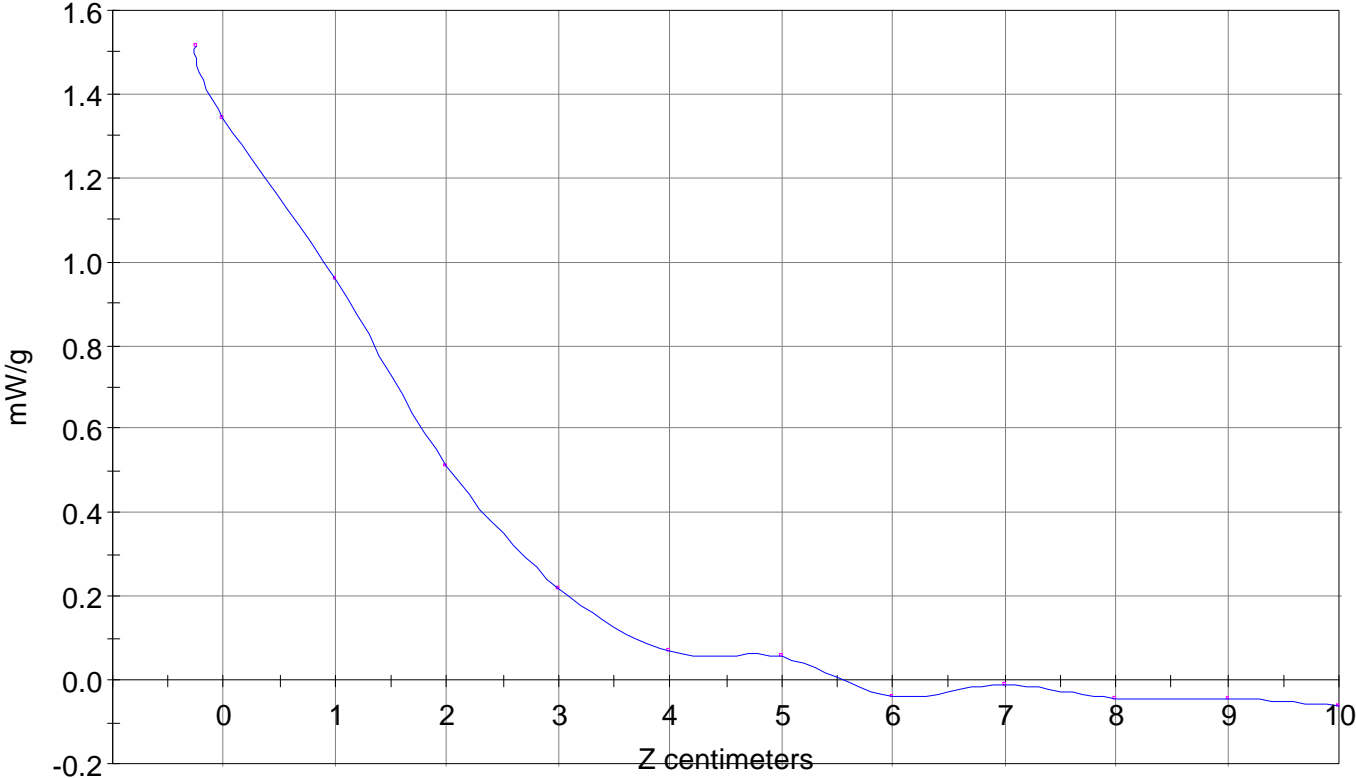
Calc. Voltage @ Surface (Vs) = 0.0207

Voltage @ 1.00 cm (Vt) = 0.0144

Ave. Voltage (Vs+Vt)/2 = 0.0175

Ave. SAR over 1 g (mW/g) = 1.2836

SAR Scan
File : 98091021_ZOOM
Start : 10-Sep-98 04:41:17 pm End : 10-Sep-98 04:52:57 pm
SAMSUNG/SCH-370/00002;824.04MHz;W;Helical/In;
Head/Left Ear;ZOOM/SAR;PCTEST/E Field/0 DegreesBrain/43.400/0.900



File : c:/idx3/SYSTEM/SARMEAS3/data/Normal/98091025_ZOOM.VLT
Start : 10-Sep-98 05:41:42 pm End : 10-Sep-98 06:01:01 pm

Radio Type : SAMSUNG
Model Number : SCH-370
Serial Number : 00002
Frequency : 824.04 MHz
Peak Trans. Pwr : 0.600 W
Start Trans. Pwr: 0.600 W
Antenna Type : Helical
Antenna Posn. : Out
Phantom Type : Head
Phantom Posn. : Left Ear
Scan Type : ZOOM/SAR
Probe Name : PCTEST
Field Type : E Field
Orientation : 0 Degrees

Mixture Type = Brain
Mixture Dielectric Constant = 43.400
Mixture Conductivity = 0.900

Comment :
CHAN 991 FM MODE
SAMSUNG DUAL MODE PHONE
PCTEST ENGINEERING LABORATORY

Robot : PCTEST

Probe Offset = 0.25 cm
Sensor Factor = 0.0108
Conversion Factor = 0.790

PCTEST Amplifier Channel Settings : 0.168 0.136 0.132

Diode Coefficients:

Channel 1	An=-10.851	Bn=86.223	Cn=38.593	Dn=-0.016	Mn=0.026	Yn=0.000
Channel 2	An=-21.618	Bn=92.335	Cn=34.909	Dn=-0.019	Mn=0.029	Yn=0.000
Channel 3	An=-11.171	Bn=50.619	Cn=19.002	Dn=-0.025	Mn=0.052	Yn=0.001

Max Location : X = 6.250, Y = -1.750, Z = 0.000 (cm) Value = 17.883

Measured Values (volts) =
1.722E-002 1.207E-002 5.980E-003 2.842E-003 2.028E-003 1.147E-003
1.673E-004 -6.337E-004 -8.481E-004 -1.061E-003 -9.682E-004

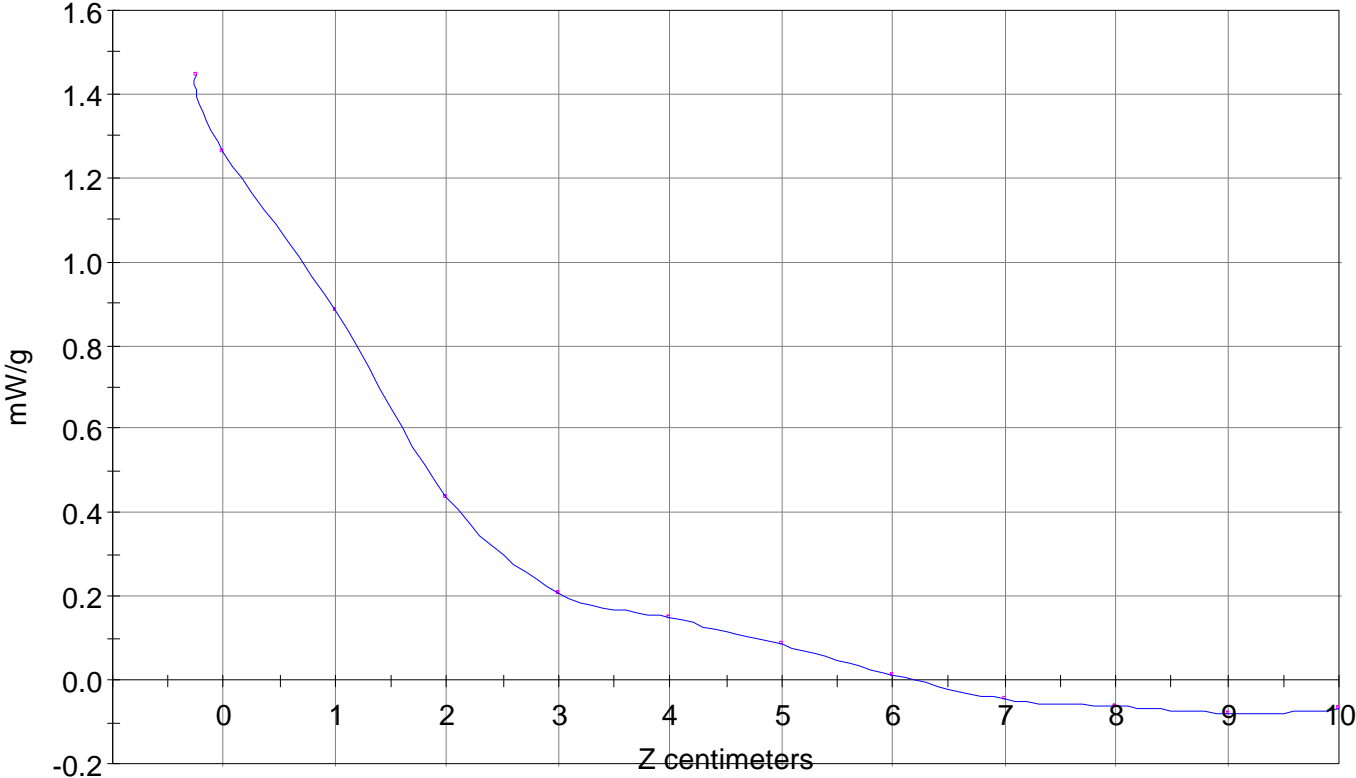
Calc. Voltage @ Surface (Vs) = 0.0197

Voltage @ 1.00 cm (Vt) = 0.0134

Ave. Voltage (Vs+Vt)/2 = 0.0165

Ave. SAR over 1 g (mW/g) = 1.2103

SAR Scan
File : 98091025_ZOOM
Start : 10-Sep-98 05:41:42 pm End : 10-Sep-98 06:01:01 pm
SAMSUNG/SCH-370/00002;824.04MHz;W;Helical/Out;
Head/Left Ear;ZOOM/SAR;PCTEST/E Field/0 DegreesBrain/43.400/0.900



File : c:/idx3/SYSTEM/SARMEAS3/data/Normal/98091020_ZOOM.VLT

Start : 10-Sep-98 04:25:19 pm End : 10-Sep-98 04:39:42 pm

Radio Type : SAMSUNG
Model Number : SCH-370
Serial Number : 00002
Frequency : 836.49 MHz
Peak Trans. Pwr : 0.600 W
Start Trans. Pwr: 0.600 W
Antenna Type : Helical
Antenna Posn. : In
Phantom Type : Head
Phantom Posn. : Left Ear
Scan Type : ZOOM/SAR
Probe Name : PCTEST
Field Type : E Field
Orientation : 0 Degrees

Mixture Type = Brain
Mixture Dielectric Constant = 43.400
Mixture Conductivity = 0.900

Comment :

CHAN 383 FM MODE
SAMSUNG DUAL MODE PHONE
PCTEST ENGINEERING LABORATORY

Robot : PCTEST

Probe Offset = 0.25 cm
Sensor Factor = 0.0108
Conversion Factor = 0.790

PCTEST Amplifier Channel Settings : 0.168 0.136 0.132

Diode Coefficients:

Channel 1	An=-10.851	Bn=86.223	Cn=38.593	Dn=-0.016	Mn=0.026	Yn=0.000
Channel 2	An=-21.618	Bn=92.335	Cn=34.909	Dn=-0.019	Mn=0.029	Yn=0.000
Channel 3	An=-11.171	Bn=50.619	Cn=19.002	Dn=-0.025	Mn=0.052	Yn=0.001

Max Location : X = 2.000, Y = -1.000, Z = 0.000 (cm) Value = 19.565

Measured Values (volts) =

2.046E-002	1.451E-002	6.740E-003	3.615E-003	1.634E-003	2.704E-005
-4.820E-004	-9.354E-004	-3.612E-004	-7.456E-004	-5.336E-004	

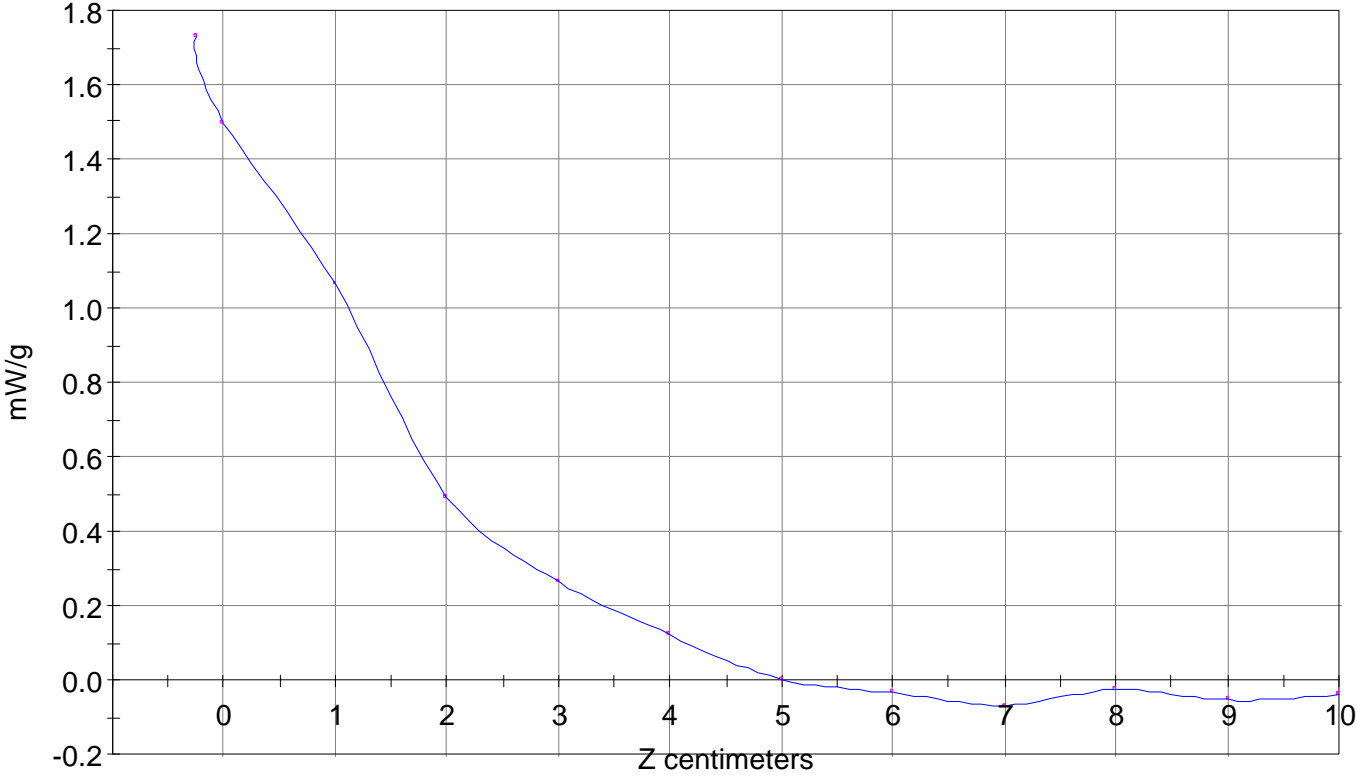
Calc. Voltage @ Surface (Vs) = 0.0236

Voltage @ 1.00 cm (Vt) = 0.0160

Ave. Voltage (Vs+Vt)/2 = 0.0198

Ave. SAR over 1 g (mW/g) = 1.4497

SAR Scan
File : 98091020_ZOOM
Start : 10-Sep-98 04:25:19 pm End : 10-Sep-98 04:39:42 pm
SAMSUNG/SCH-370/00002;836.49MHz;W;Helical/In;
Head/Left Ear;ZOOM/SAR;PCTEST/E Field/0 DegreesBrain/43.400/0.900

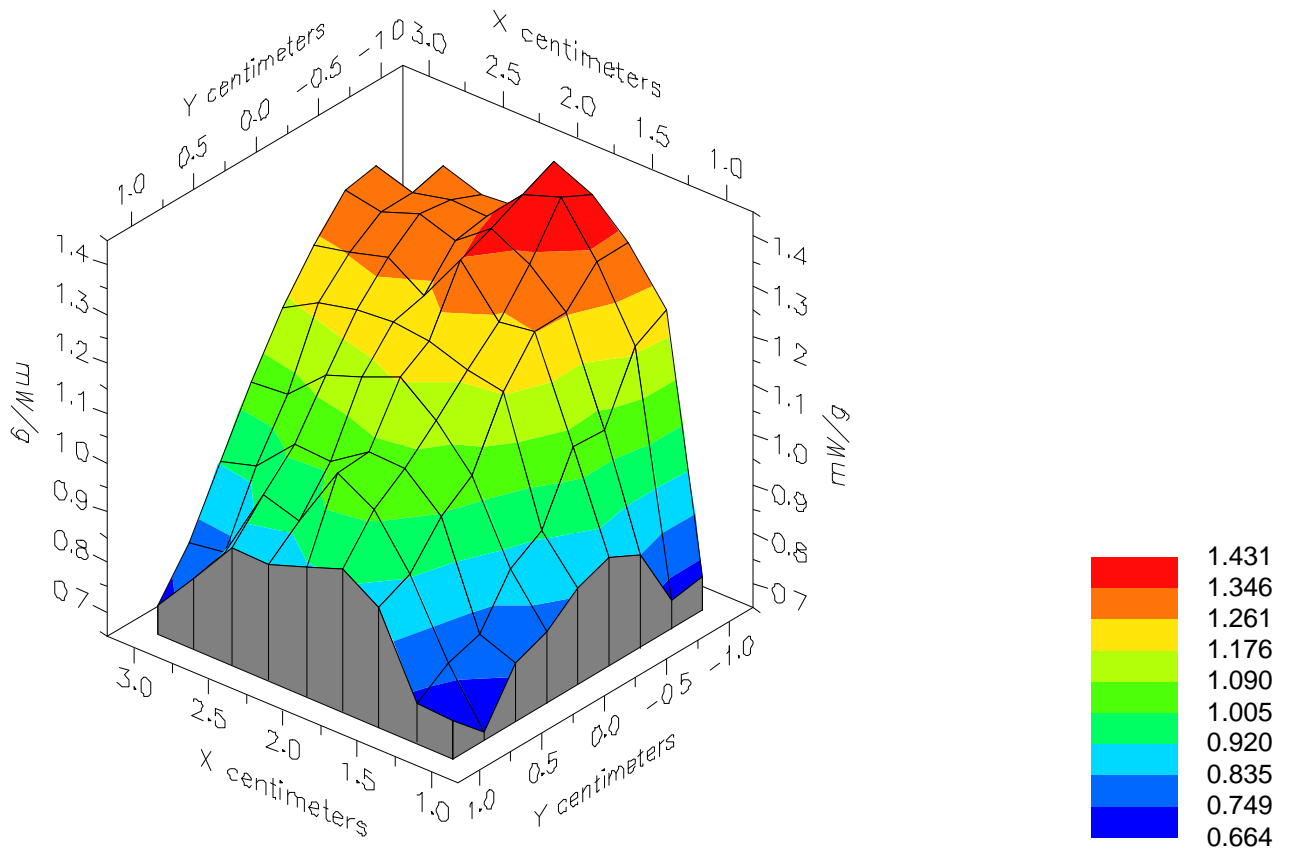


File : 98091020_ZOOM

Start : 10-Sep-98 04:25:19 pm End : 10-Sep-98 04:39:42 pm

SAMSUNG/SCH-370/00002;836.49MHz;W;Helical/In;

Head/Left Ear;ZOOM/SAR;PCTEST/E Field/0 DegreesBrain/43.400/0.900

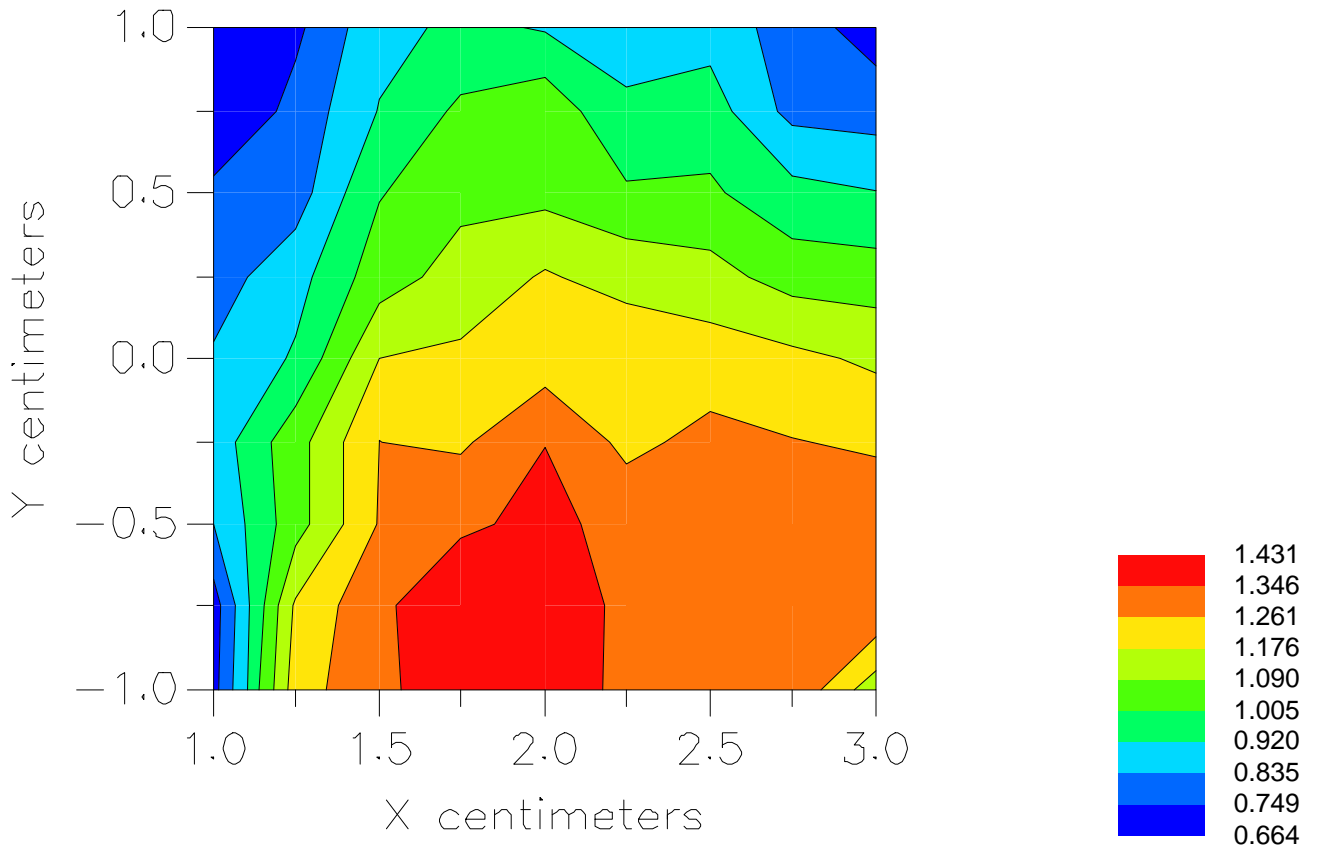


File : 98091020_ZOOM

Start : 10-Sep-98 04:25:19 pm End : 10-Sep-98 04:39:42 pm

SAMSUNG/SCH-370/00002;836.49MHz;W;Helical/In;

Head/Left Ear;ZOOM/SAR;PCTEST/E Field/0 DegreesBrain/43.400/0.900



File : c:/idx3/SYSTEM/SARMEAS3/data/Normal/98091024_ZOOM.VLT
Start : 10-Sep-98 05:30:04 pm End : 10-Sep-98 05:40:51 pm

Radio Type : SAMSUNG
Model Number : SCH-370
Serial Number : 00002
Frequency : 836.49 MHz
Peak Trans. Pwr : 0.600 W
Start Trans. Pwr: 0.600 W
Antenna Type : Helical
Antenna Posn. : Out
Phantom Type : Head
Phantom Posn. : Left Ear
Scan Type : ZOOM/SAR
Probe Name : PCTEST
Field Type : E Field
Orientation : 0 Degrees

Mixture Type = Brain
Mixture Dielectric Constant = 43.400
Mixture Conductivity = 0.900

Comment :
CHAN 383 FM MODE
SAMSUNG DUAL MODE PHONE
PCTEST ENGINEERING LABORATORY

Robot : PCTEST

Probe Offset = 0.25 cm
Sensor Factor = 0.0108
Conversion Factor = 0.790

PCTEST Amplifier Channel Settings : 0.168 0.136 0.132

Diode Coefficients:

Channel 1	An=-10.851	Bn=86.223	Cn=38.593	Dn=-0.016	Mn=0.026	Yn=0.000
Channel 2	An=-21.618	Bn=92.335	Cn=34.909	Dn=-0.019	Mn=0.029	Yn=0.000
Channel 3	An=-11.171	Bn=50.619	Cn=19.002	Dn=-0.025	Mn=0.052	Yn=0.001

Max Location : X = 6.250, Y = -1.500, Z = 0.000 (cm) Value = 17.948

Measured Values (volts) =

1.728E-002	1.019E-002	5.289E-003	3.331E-003	1.918E-003	7.274E-004
5.530E-004	-2.147E-004	-7.423E-004	-6.311E-004	-8.757E-004	

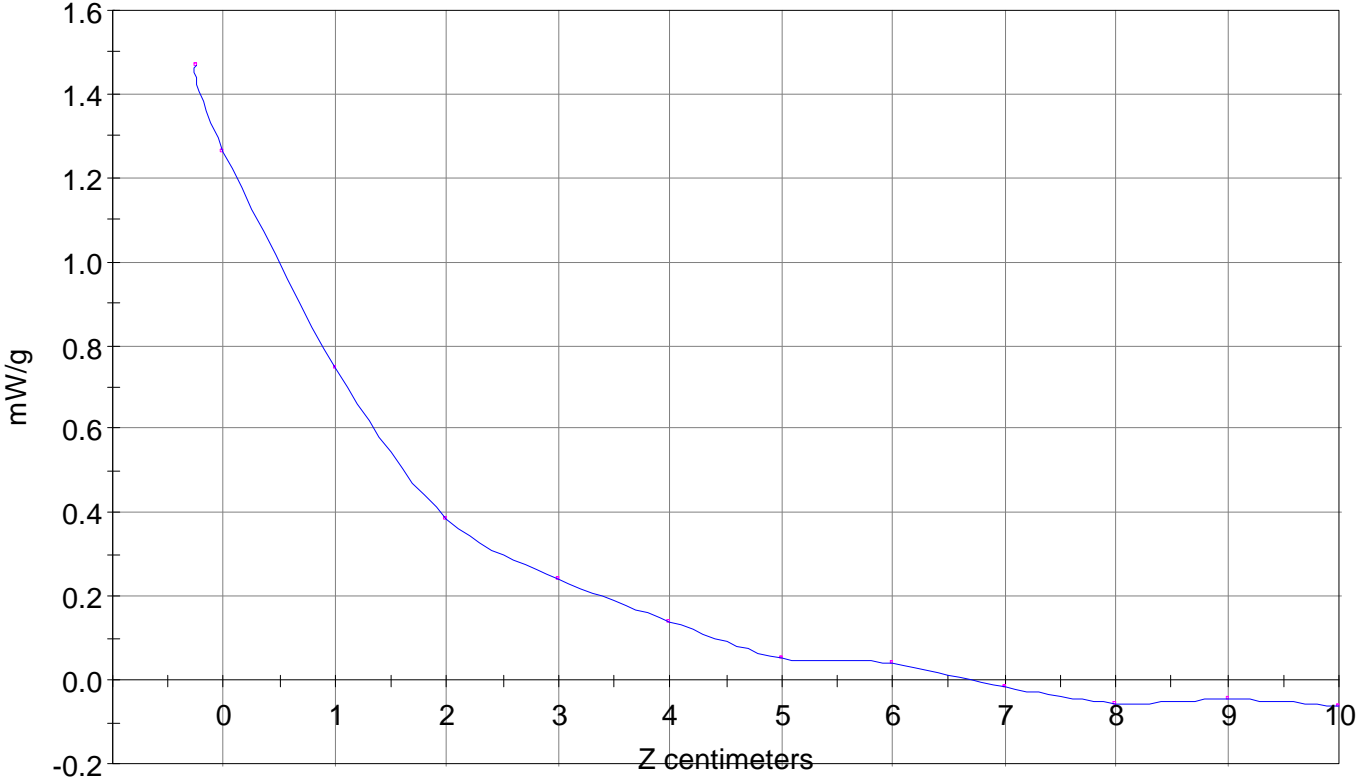
Calc. Voltage @ Surface (Vs) = 0.0200

Voltage @ 1.00 cm (Vt) = 0.0120

Ave. Voltage (Vs+Vt)/2 = 0.0160

Ave. SAR over 1 g (mW/g) = 1.1703

SAR Scan
File : 98091024_ZOOM
Start : 10-Sep-98 05:30:04 pm End : 10-Sep-98 05:40:51 pm
SAMSUNG/SCH-370/00002;836.49MHz;W;Helical/Out;
Head/Left Ear;ZOOM/SAR;PCTEST/E Field/0 DegreesBrain/43.400/0.900



File : c:/idx3/SYSTEM/SARMEAS3/data/Normal/98091022_ZOOM.VLT
Start : 10-Sep-98 04:54:03 pm End : 10-Sep-98 05:06:17 pm

Radio Type : SAMSUNG
Model Number : SCH-370
Serial Number : 00002
Frequency : 848.97 MHz
Peak Trans. Pwr : 0.600 W
Start Trans. Pwr: 0.600 W
Antenna Type : Helical
Antenna Posn. : In
Phantom Type : Head
Phantom Posn. : Left Ear
Scan Type : ZOOM/SAR
Probe Name : PCTEST
Field Type : E Field
Orientation : 0 Degrees

Mixture Type = Brain
Mixture Dielectric Constant = 43.400
Mixture Conductivity = 0.900

Comment :
CHAN 799 FM MODE
SAMSUNG DUAL MODE PHONE
PCTEST ENGINEERING LABORATORY

Robot : PCTEST

Probe Offset = 0.25 cm
Sensor Factor = 0.0108
Conversion Factor = 0.790

PCTEST Amplifier Channel Settings : 0.168 0.136 0.132

Diode Coefficients:

Channel 1	An=-10.851	Bn=86.223	Cn=38.593	Dn=-0.016	Mn=0.026	Yn=0.000
Channel 2	An=-21.618	Bn=92.335	Cn=34.909	Dn=-0.019	Mn=0.029	Yn=0.000
Channel 3	An=-11.171	Bn=50.619	Cn=19.002	Dn=-0.025	Mn=0.052	Yn=0.001

Max Location : X = 2.000, Y = -1.000, Z = 0.000 (cm) Value = 18.437

Measured Values (volts) =

1.801E-002	1.317E-002	6.747E-003	2.346E-003	6.459E-004	-1.580E-004
-4.384E-004	-4.203E-004	-1.108E-003	-8.738E-004	-9.976E-004	

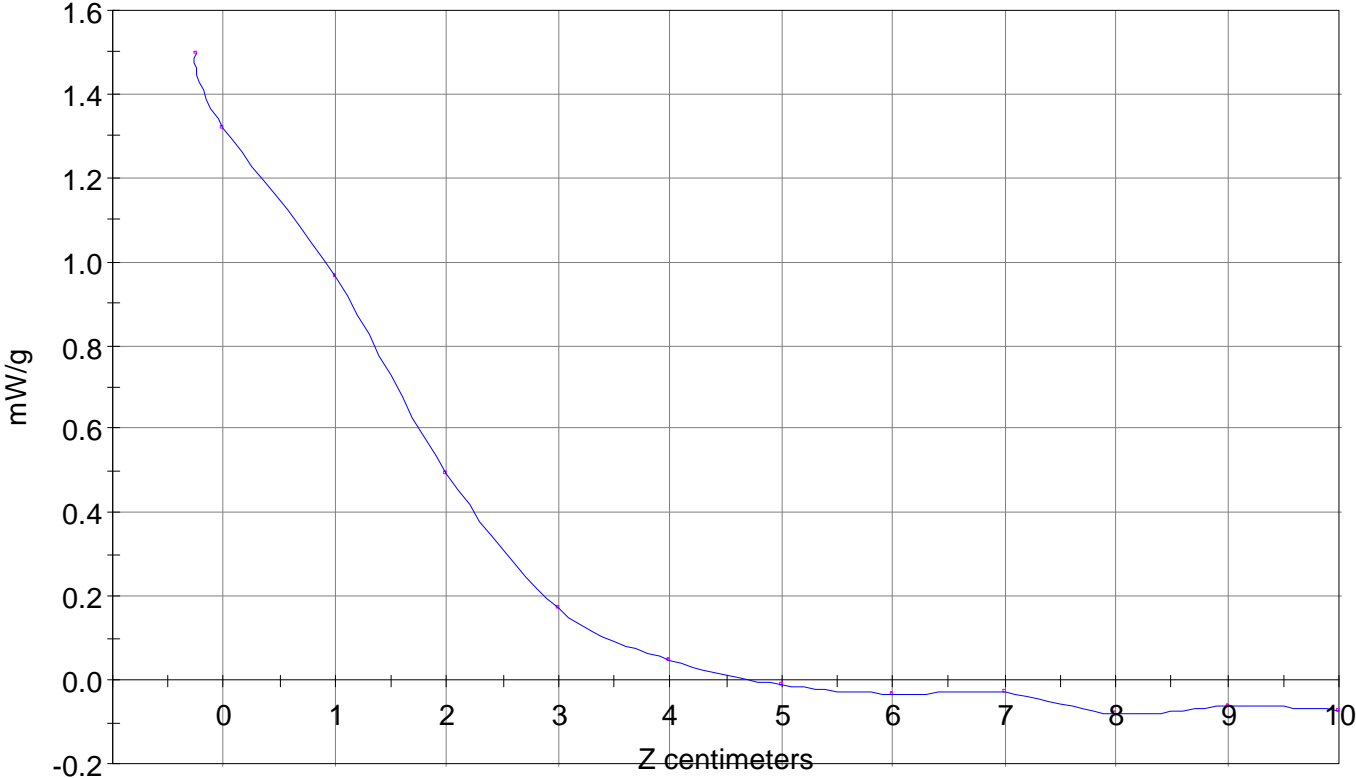
Calc. Voltage @ Surface (Vs) = 0.0204

Voltage @ 1.00 cm (Vt) = 0.0144

Ave. Voltage (Vs+Vt)/2 = 0.0174

Ave. SAR over 1 g (mW/g) = 1.2734

SAR Scan
File : 98091022_ZOOM
Start : 10-Sep-98 04:54:03 pm End : 10-Sep-98 05:06:17 pm
SAMSUNG/SCH-370/00002;848.97MHz;W;Helical/In;
Head/Left Ear;ZOOM/SAR;PCTEST/E Field/0 DegreesBrain/43.400/0.900



File : c:/idx3/SYSTEM/SARMEAS3/data/Normal/98091023_ZOOM.VLT
Start : 10-Sep-98 05:18:53 pm End : 10-Sep-98 05:28:57 pm

Radio Type : SAMSUNG
Model Number : SCH-370
Serial Number : 00002
Frequency : 848.97 MHz
Peak Trans. Pwr : 0.600 W
Start Trans. Pwr: 0.600 W
Antenna Type : Helical
Antenna Posn. : Out
Phantom Type : Head
Phantom Posn. : Left Ear
Scan Type : ZOOM/SAR
Probe Name : PCTEST
Field Type : E Field
Orientation : 0 Degrees

Mixture Type = Brain
Mixture Dielectric Constant = 43.400
Mixture Conductivity = 0.900

Comment :
CHAN 799 FM MODE
SAMSUNG DUAL MODE PHONE
PCTEST ENGINEERING LABORATORY

Robot : PCTEST

Probe Offset = 0.25 cm
Sensor Factor = 0.0108
Conversion Factor = 0.790

PCTEST Amplifier Channel Settings : 0.168 0.136 0.132

Diode Coefficients:

Channel 1	An=-10.851	Bn=86.223	Cn=38.593	Dn=-0.016	Mn=0.026	Yn=0.000
Channel 2	An=-21.618	Bn=92.335	Cn=34.909	Dn=-0.019	Mn=0.029	Yn=0.000
Channel 3	An=-11.171	Bn=50.619	Cn=19.002	Dn=-0.025	Mn=0.052	Yn=0.001

Max Location : X = 6.250, Y = -2.000, Z = 0.000 (cm) Value = 16.070

Measured Values (volts) =

1.657E-002	1.141E-002	5.587E-003	3.421E-003	1.539E-003	1.334E-003
7.097E-004	2.648E-005	-6.935E-004	-7.855E-004	-1.089E-003	

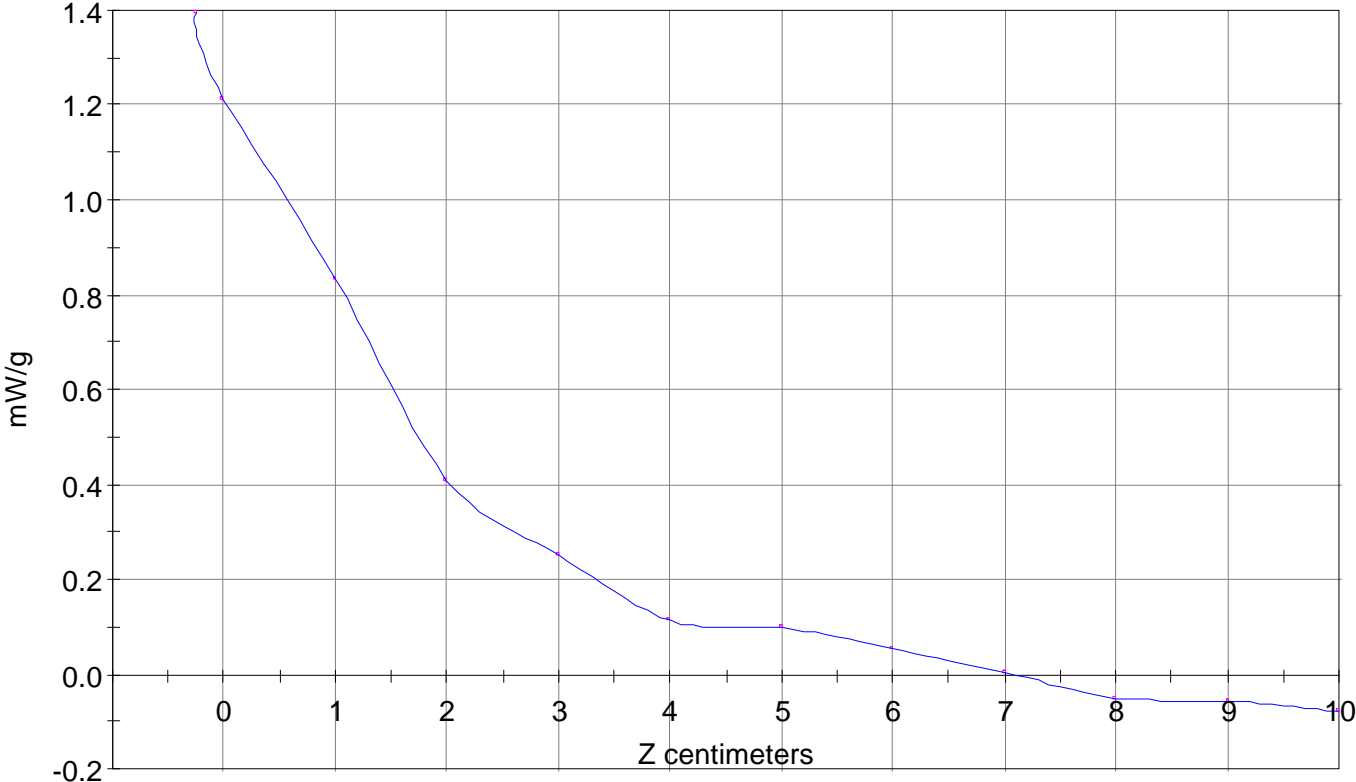
Calc. Voltage @ Surface (Vs) = 0.0191

Voltage @ 1.00 cm (Vt) = 0.0127

Ave. Voltage (Vs+Vt)/2 = 0.0159

Ave. SAR over 1 g (mW/g) = 1.1613

SAR Scan
File : 98091023_ZOOM
Start : 10-Sep-98 05:18:53 pm End : 10-Sep-98 05:28:57 pm
SAMSUNG/SCH-370/00002;848.97MHz;W;Helical/Out;
Head/Left Ear;ZOOM/SAR;PCTEST/E Field/0 DegreesBrain/43.400/0.900



File : c:/idx3/SYSTEM/SARMEAS3/data/Normal/98091401_ZOOM.VLT
Start : 14-Sep-98 09:39:20 am End : 14-Sep-98 09:50:31 am

Radio Type : SAMSUNG
Model Number : SCH-370
Serial Number : 00002
Frequency : 835.89 MHz
Peak Trans. Pwr : 0.320 W
Start Trans. Pwr: 0.320 W
Antenna Type : Helical
Antenna Posn. : In
Phantom Type : Head
Phantom Posn. : Left Ear
Scan Type : ZOOM/SAR
Probe Name : PCTEST
Field Type : E Field
Orientation : 0 Degrees

Mixture Type = Brain
Mixture Dielectric Constant = 43.400
Mixture Conductivity = 0.900

Comment :
CHAN 0363 CDMA MODE
SAMSUNG DUAL MODE PHONE
PCTEST ENGINEERING LABORATORY

Robot : PCTEST

Probe Offset = 0.25 cm
Sensor Factor = 0.0108
Conversion Factor = 0.790

PCTEST Amplifier Channel Settings : 0.168 0.136 0.132

Diode Coefficients:

Channel 1	An=-10.851	Bn=86.223	Cn=38.593	Dn=-0.016	Mn=0.026	Yn=0.000
Channel 2	An=-21.618	Bn=92.335	Cn=34.909	Dn=-0.019	Mn=0.029	Yn=0.000
Channel 3	An=-11.171	Bn=50.619	Cn=19.002	Dn=-0.025	Mn=0.052	Yn=0.001

Max Location : X = 2.500, Y = 0.000, Z = 0.000 (cm) Value = 12.712

Measured Values (volts) =

1.306E-002	8.808E-003	4.094E-003	1.056E-003	-1.328E-004	-6.008E-004
-8.561E-004	-9.219E-004	-1.223E-003	-1.260E-003	-1.016E-003	

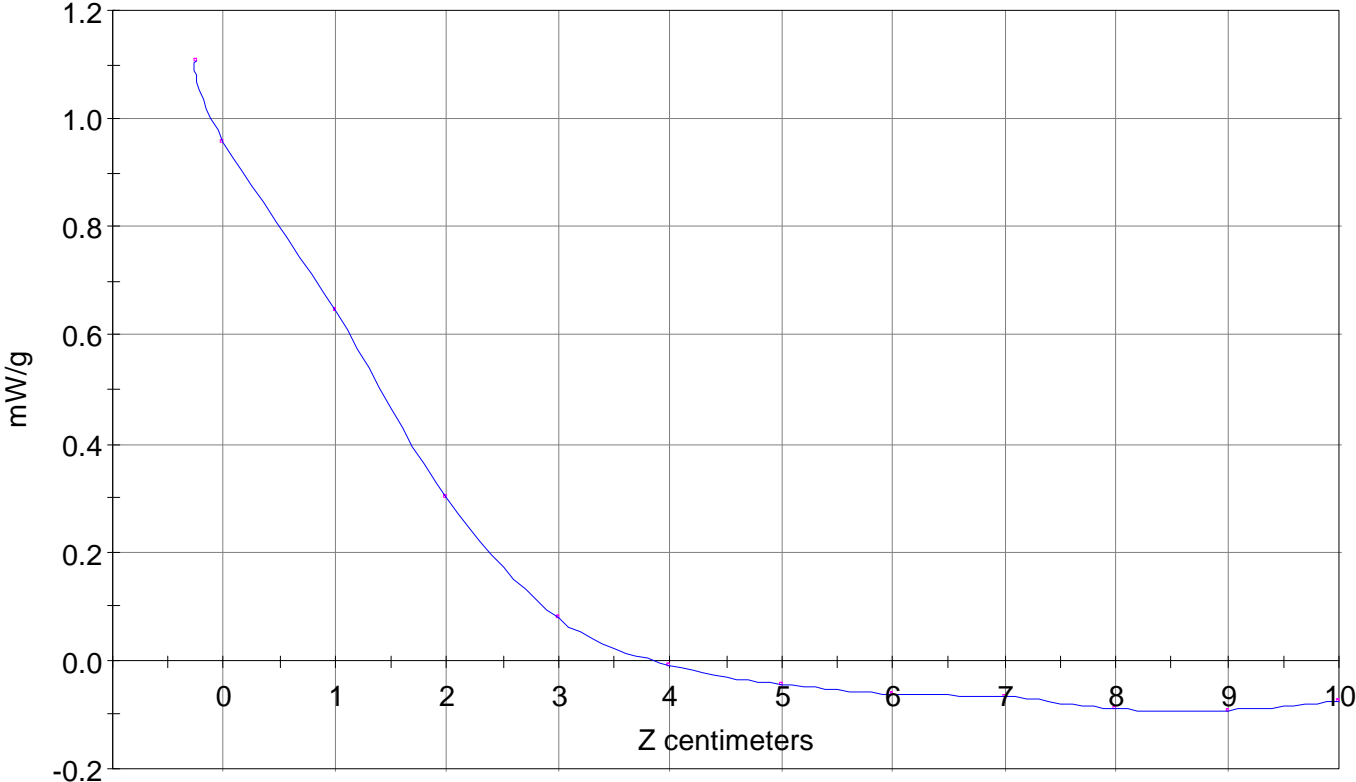
Calc. Voltage @ Surface (Vs) = 0.0152

Voltage @ 1.00 cm (Vt) = 0.0099

Ave. Voltage (Vs+Vt)/2 = 0.0125

Ave. SAR over 1 g (mW/g) = 0.9156

SAR Scan
File : 98091401_ZOOM
Start : 14-Sep-98 09:39:20 am End : 14-Sep-98 09:50:31 am
SAMSUNG/SCH-370/00002;835.89MHz;W;Helical/In;
Head/Left Ear;ZOOM/SAR;PCTEST/E Field/0 DegreesBrain/43.400/0.900



File : c:/idx3/SYSTEM/SARMEAS3/data/Normal/98091402_ZOOM.VLT

Start : 14-Sep-98 09:52:45 am End : 14-Sep-98 10:04:22 am

Radio Type : SAMSUNG
Model Number : SCH-370
Serial Number : 00002
Frequency : 835.89 MHz
Peak Trans. Pwr : 0.320 W
Start Trans. Pwr : 0.320 W
Antenna Type : Helical
Antenna Posn. : Out
Phantom Type : Head
Phantom Posn. : Left Ear
Scan Type : ZOOM/SAR
Probe Name : PCTEST
Field Type : E Field
Orientation : 0 Degrees

Mixture Type = Brain
Mixture Dielectric Constant = 43.400
Mixture Conductivity = 0.900

Comment :

CHAN 0363 CDMA MODE
SAMSUNG DUAL MODE PHONE
PCTEST ENGINEERING LABORATORY

Robot : PCTEST

Probe Offset = 0.25 cm
Sensor Factor = 0.0108
Conversion Factor = 0.790

PCTEST Amplifier Channel Settings : 0.168 0.136 0.132

Diode Coefficients:

Channel 1	An=-10.851	Bn=86.223	Cn=38.593	Dn=-0.016	Mn=0.026	Yn=0.000
Channel 2	An=-21.618	Bn=92.335	Cn=34.909	Dn=-0.019	Mn=0.029	Yn=0.000
Channel 3	An=-11.171	Bn=50.619	Cn=19.002	Dn=-0.025	Mn=0.052	Yn=0.001

Max Location : X = 1.750, Y = 0.750, Z = 0.000 (cm) Value = 10.387

Measured Values (volts) =

1.018E-002	7.095E-003	3.472E-003	1.138E-003	-5.247E-004	-6.468E-004
-1.035E-003	-1.035E-003	-1.063E-003	-1.252E-003	-9.884E-004	

Calc. Voltage @ Surface (Vs) = 0.0117

Voltage @ 1.00 cm (Vt) = 0.0079

Ave. Voltage (Vs+Vt)/2 = 0.0098

Ave. SAR over 1 g (mW/g) = 0.7154

SAR Scan
File : 98091402_ZOOM
Start : 14-Sep-98 09:52:45 am End : 14-Sep-98 10:04:22 am
SAMSUNG/SCH-370/00002;835.89MHz;W;Helical/Out;
Head/Left Ear;ZOOM/SAR;PCTEST/E Field/0 DegreesBrain/43.400/0.900

