

File : c:/idx3/SYSTEM/SARMEAS3/data/Normal/99051708_ZOOM.VLT

Start : 17-May-99 01:00:29 pm End : 17-May-99 01:11:39 pm

Radio Type : Samsung
Model Number : A3LSCH3500
Serial Number : 038
Frequency : 824.04 MHz
Peak Trans. Pwr : 0.500 W
Start Trans. Pwr: 0.500 W
Antenna Type : Helical
Antenna Posn. : In
Phantom Type : Head
Phantom Posn. : Left Ear
Scan Type : ZOOM/SAR
Probe Name : PCTEST
Field Type : E Field
Orientation : 0 Degrees

Mixture Type = Brain
Mixture Dielectric Constant = 43.400
Mixture Conductivity = 0.900

Comment :
SAMSUNG DUAL BAND PHONE
CHANNEL 991 FM MODE

Robot : PCTEST

Probe Offset = 0.25 cm
Sensor Factor = 0.0108
Conversion Factor = 0.790

PCTEST Amplifier Channel Settings : 0.168 0.136 0.132

Diode Coefficients:

| | | | | | | |
|-----------|------------|-----------|-----------|-----------|----------|----------|
| Channel 1 | An=-10.851 | Bn=86.223 | Cn=38.593 | Dn=-0.016 | Mn=0.026 | Yn=0.000 |
| Channel 2 | An=-21.618 | Bn=92.335 | Cn=34.909 | Dn=-0.019 | Mn=0.029 | Yn=0.000 |
| Channel 3 | An=-11.171 | Bn=50.619 | Cn=19.002 | Dn=-0.025 | Mn=0.052 | Yn=0.001 |

Max Location : X = 3.250, Y = -5.000, Z = 0.000 (cm) Value = 8.770

Measured Values (volts) =

| | | | | | |
|-------------|-------------|-------------|-------------|-------------|-------------|
| 8.588E-003 | 6.874E-003 | 5.682E-003 | 4.796E-003 | 3.976E-003 | 3.321E-003 |
| 2.758E-003 | 2.241E-003 | 1.797E-003 | 1.411E-003 | 1.070E-003 | 7.661E-004 |
| 4.862E-004 | 2.397E-004 | -1.356E-006 | -1.783E-004 | -3.560E-004 | -5.208E-004 |
| -6.518E-004 | -7.571E-004 | -8.429E-004 | | | |

Calc. Voltage @ Surface (Vs) = 0.0106

Voltage @ 1.00 cm (Vt) = 0.0048

Ave. Voltage (Vs+Vt)/2 = 0.0077

Ave. SAR over 1 g (mW/g) = 0.5616

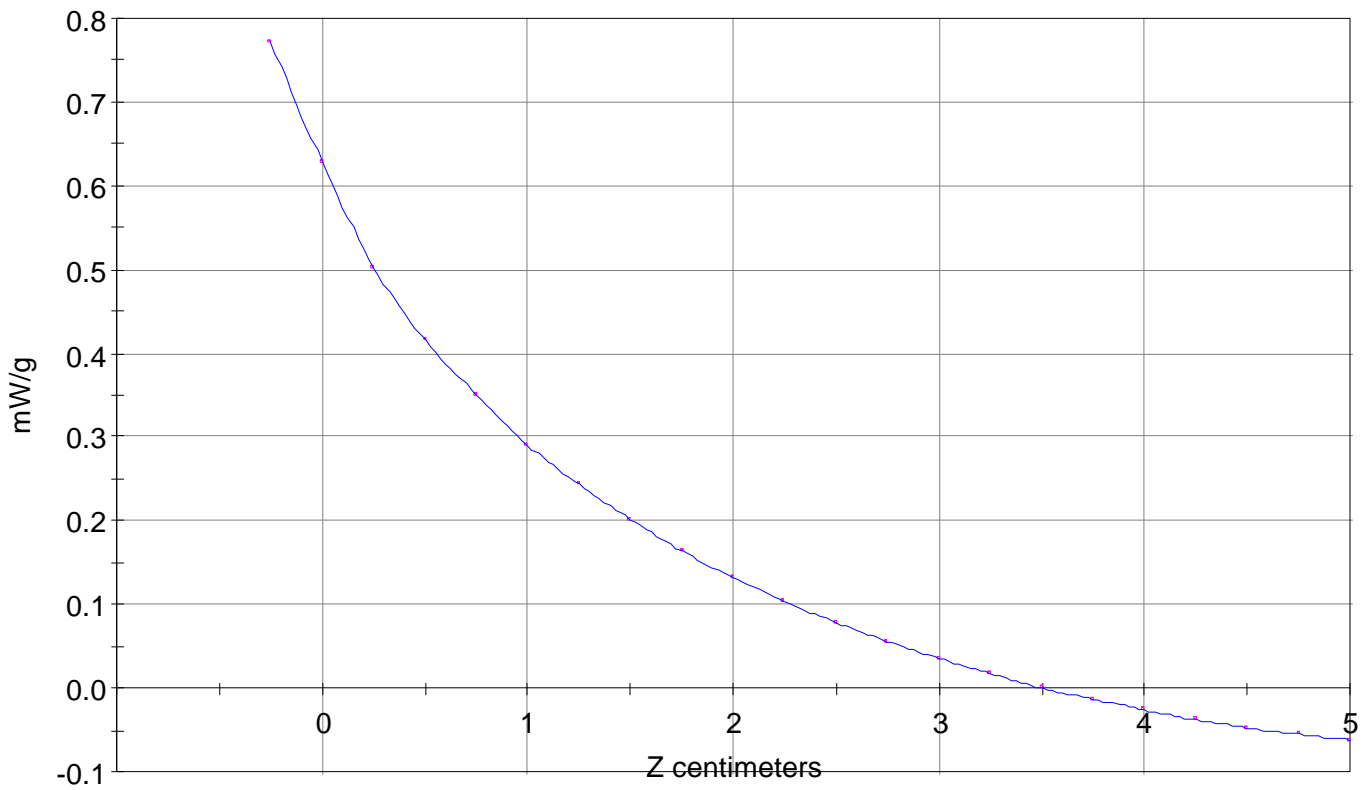
SAR Scan

File : 99051708_ZOOM

Start : 17-May-99 01:00:29 pm End : 17-May-99 01:11:39 pm

Samsung/A3LSCH3500/038;824.04MHz;W;Helical/In;

Head/Left Ear;ZOOM/SAR;PCTEST/E Field/0 DegreesBrain/43.400/0.900



File : c:/idx3/SYSTEM/SARMEAS3/data/Normal/99051707_ZOOM.VLT
Start : 17-May-99 12:57:14 pm End : 17-May-99 12:58:37 pm

Radio Type : Samsung
Model Number : A3LSCH3500
Serial Number : 038
Frequency : 824.04 MHz
Peak Trans. Pwr : 0.500 W
Start Trans. Pwr: 0.500 W
Antenna Type : Helical
Antenna Posn. : Out
Phantom Type : Head
Phantom Posn. : Left Ear
Scan Type : ZOOM/SAR
Probe Name : PCTEST
Field Type : E Field
Orientation : 0 Degrees

Mixture Type = Brain
Mixture Dielectric Constant = 43.400
Mixture Conductivity = 0.900

Comment :
SAMSUNG DUAL BAND PHONE
CHANNEL 991 FM MODE

Robot : PCTEST

Probe Offset = 0.25 cm
Sensor Factor = 0.0108
Conversion Factor = 0.790

PCTEST Amplifier Channel Settings : 0.168 0.136 0.132

Diode Coefficients:

| | | | | | | |
|-----------|------------|-----------|-----------|-----------|----------|----------|
| Channel 1 | An=-10.851 | Bn=86.223 | Cn=38.593 | Dn=-0.016 | Mn=0.026 | Yn=0.000 |
| Channel 2 | An=-21.618 | Bn=92.335 | Cn=34.909 | Dn=-0.019 | Mn=0.029 | Yn=0.000 |
| Channel 3 | An=-11.171 | Bn=50.619 | Cn=19.002 | Dn=-0.025 | Mn=0.052 | Yn=0.001 |

Max Location : X = 3.250, Y = -5.500, Z = 0.000 (cm) Value = 15.613

Measured Values (volts) =

| | | | | | |
|-------------|-------------|-------------|------------|------------|------------|
| 1.529E-002 | 1.323E-002 | 1.118E-002 | 9.619E-003 | 8.183E-003 | 6.967E-003 |
| 6.028E-003 | 5.079E-003 | 4.348E-003 | 3.627E-003 | 2.960E-003 | 2.435E-003 |
| 1.937E-003 | 1.446E-003 | 1.071E-003 | 6.826E-004 | 3.339E-004 | 8.127E-005 |
| -1.536E-004 | -3.608E-004 | -5.028E-004 | | | |

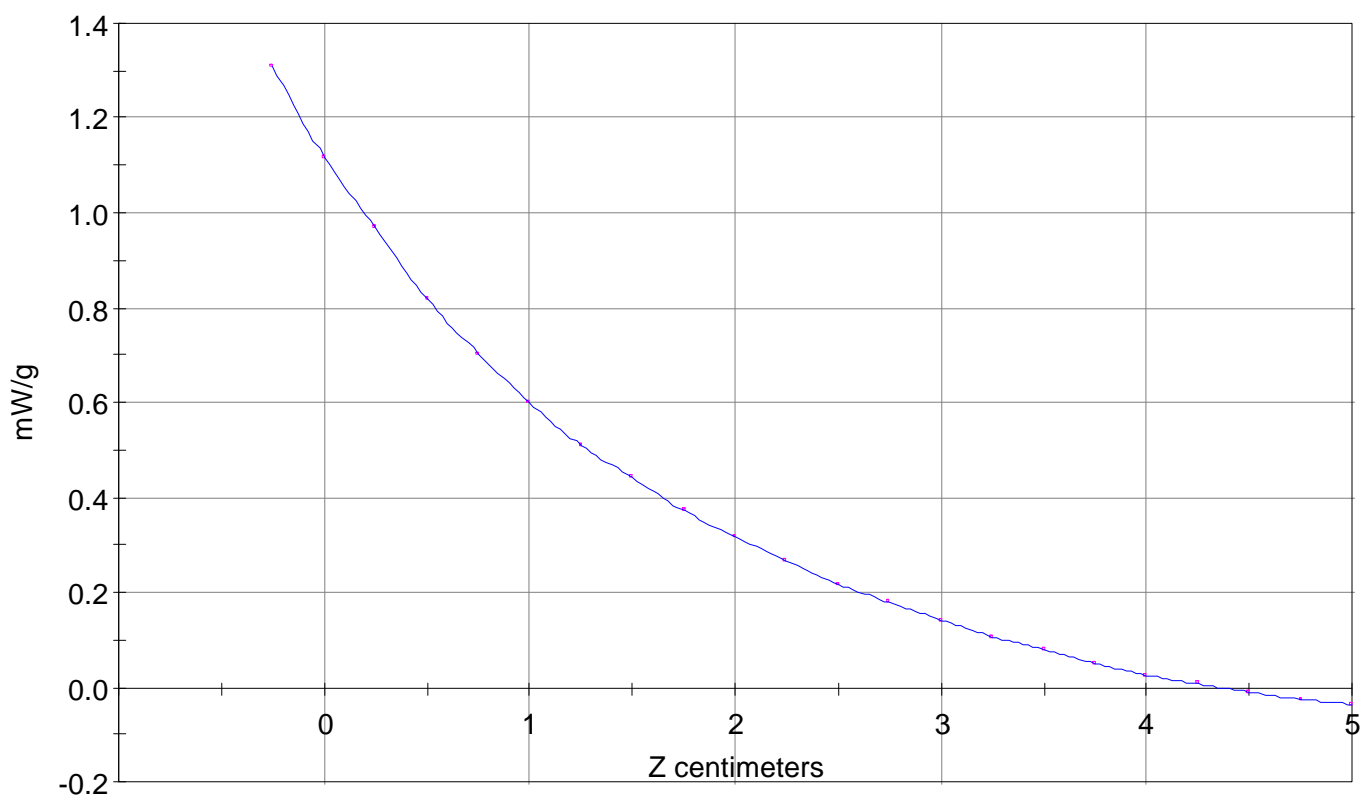
Calc. Voltage @ Surface (Vs) = 0.0179

Voltage @ 1.00 cm (Vt) = 0.0096

Ave. Voltage (Vs+Vt)/2 = 0.0137

Ave. SAR over 1 g (mW/g) = 1.0056

SAR Scan
File : 99051707_ZOOM
Start : 17-May-99 12:57:14 pm End : 17-May-99 12:58:37 pm
Samsung/A3LSCH3500/038;824.04MHz;W;Helical/Out;
Head/Left Ear;SAR;PCTEST/E Field/0 DegreesBrain/43.400/0.900



File : c:/idx3/SYSTEM/SARMEAS3/data/Normal/99051702_ZOOM.VLT
Start : 17-May-99 11:02:44 am End : 17-May-99 11:13:14 am

Radio Type : Samsung
Model Number : A3LSCH3500
Serial Number : 038
Frequency : 836.49 MHz
Peak Trans. Pwr : 0.500 W
Start Trans. Pwr: 0.500 W
Antenna Type : Helical
Antenna Posn. : In
Phantom Type : Head
Phantom Posn. : Left Ear
Scan Type : ZOOM/SAR
Probe Name : PCTEST
Field Type : E Field
Orientation : 0 Degrees

Mixture Type = Brain
Mixture Dielectric Constant = 43.400
Mixture Conductivity = 0.900

Comment :
SAMSUNG DUAL BAND PHONE
CHANNEL 383 FM MODE

Robot : PCTEST

Probe Offset = 0.25 cm
Sensor Factor = 0.0108
Conversion Factor = 0.790

PCTEST Amplifier Channel Settings : 0.168 0.136 0.132

Diode Coefficients:

| | | | | | | |
|-----------|------------|-----------|-----------|-----------|----------|----------|
| Channel 1 | An=-10.851 | Bn=86.223 | Cn=38.593 | Dn=-0.016 | Mn=0.026 | Yn=0.000 |
| Channel 2 | An=-21.618 | Bn=92.335 | Cn=34.909 | Dn=-0.019 | Mn=0.029 | Yn=0.000 |
| Channel 3 | An=-11.171 | Bn=50.619 | Cn=19.002 | Dn=-0.025 | Mn=0.052 | Yn=0.001 |

Max Location : X = 3.000, Y = -5.750, Z = 0.000 (cm) Value = 13.579

Measured Values (volts) =

| | | | | | |
|-------------|-------------|-------------|------------|------------|-------------|
| 1.328E-002 | 1.238E-002 | 9.436E-003 | 7.657E-003 | 6.326E-003 | 5.325E-003 |
| 4.499E-003 | 3.748E-003 | 3.197E-003 | 2.647E-003 | 2.141E-003 | 1.791E-003 |
| 1.393E-003 | 1.056E-003 | 7.351E-004 | 4.406E-004 | 1.711E-004 | -4.793E-005 |
| -2.785E-004 | -4.540E-004 | -5.548E-004 | | | |

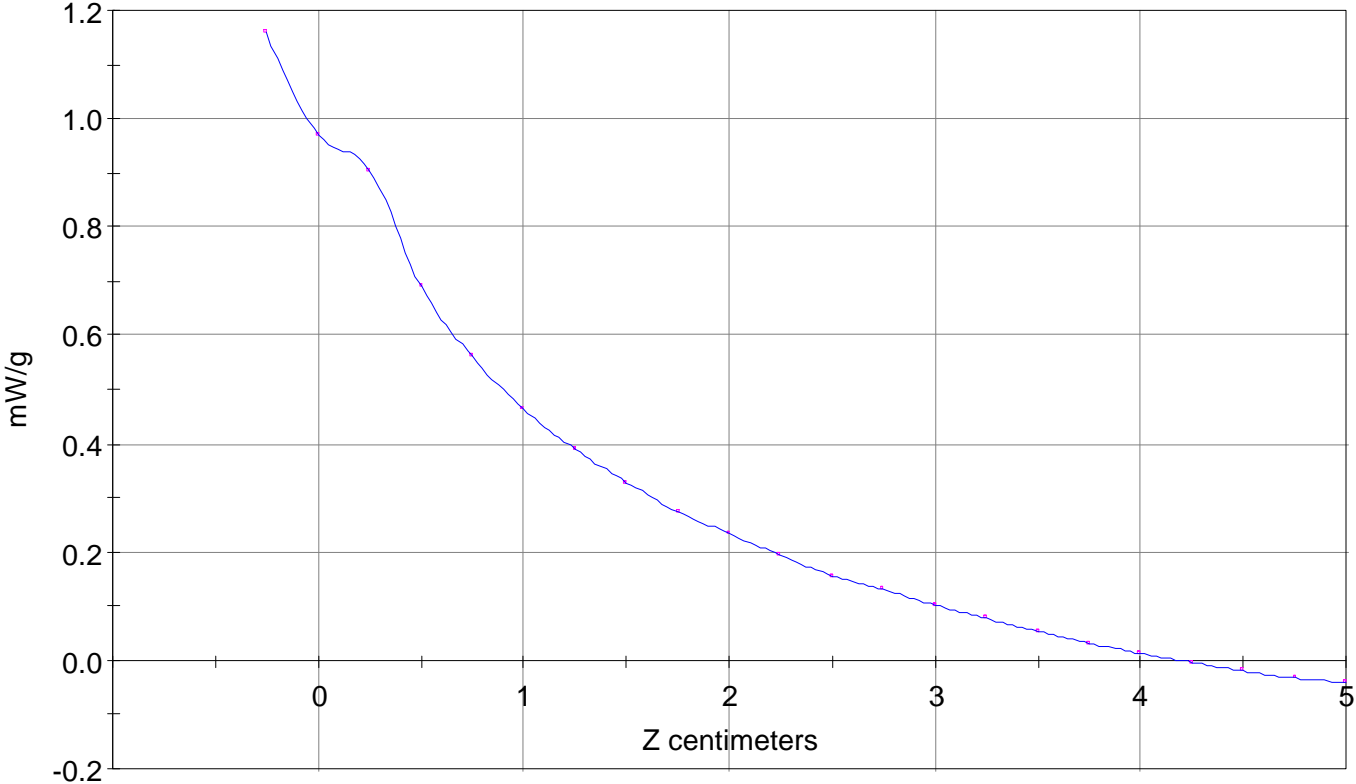
Calc. Voltage @ Surface (Vs) = 0.0158

Voltage @ 1.00 cm (Vt) = 0.0077

Ave. Voltage (Vs+Vt)/2 = 0.0117

Ave. SAR over 1 g (mW/g) = 0.8594

SAR Scan
File : 99051702_ZOOM
Start : 17-May-99 11:02:44 am End : 17-May-99 11:13:14 am
Samsung/A3LSCH3500/038;836.49MHz;W;Helical/In;
Head/Left Ear;ZOOM/SAR;PCTEST/E Field/0 DegreesBrain/43.400/0.900



File : c:/idx3/SYSTEM/SARMEAS3/data/Normal/99051701_ZOOM.VLT
Start : 17-May-99 10:32:49 am End : 17-May-99 10:43:18 am

Radio Type : Samsung
Model Number : A3LSCH3500
Serial Number : 038
Frequency : 836.49 MHz
Peak Trans. Pwr : 0.500 W
Start Trans. Pwr : 0.500 W
Antenna Type : Helical
Antenna Posn. : Out
Phantom Type : Head
Phantom Posn. : Left Ear
Scan Type : ZOOM/SAR
Probe Name : PCTEST
Field Type : E Field
Orientation : 0 Degrees

Mixture Type = Brain
Mixture Dielectric Constant = 43.400
Mixture Conductivity = 0.900

Comment :
SAMSUNG DUAL BAND PHONE
CHANNEL 383 FM MODE

Robot : PCTEST

Probe Offset = 0.25 cm
Sensor Factor = 0.0108
Conversion Factor = 0.790

PCTEST Amplifier Channel Settings : 0.168 0.136 0.132

Diode Coefficients:

| | | | | | | |
|-----------|------------|-----------|-----------|-----------|----------|----------|
| Channel 1 | An=-10.851 | Bn=86.223 | Cn=38.593 | Dn=-0.016 | Mn=0.026 | Yn=0.000 |
| Channel 2 | An=-21.618 | Bn=92.335 | Cn=34.909 | Dn=-0.019 | Mn=0.029 | Yn=0.000 |
| Channel 3 | An=-11.171 | Bn=50.619 | Cn=19.002 | Dn=-0.025 | Mn=0.052 | Yn=0.001 |

Max Location : X = 3.000, Y = -5.500, Z = 0.000 (cm) Value = 22.392

Measured Values (volts) =

| | | | | | |
|------------|------------|-------------|------------|------------|------------|
| 2.122E-002 | 1.871E-002 | 1.501E-002 | 1.246E-002 | 1.053E-002 | 8.989E-003 |
| 7.661E-003 | 6.545E-003 | 5.530E-003 | 4.799E-003 | 4.049E-003 | 3.364E-003 |
| 2.810E-003 | 2.236E-003 | 1.819E-003 | 1.418E-003 | 1.017E-003 | 6.832E-004 |
| 3.731E-004 | 1.089E-004 | -1.871E-004 | | | |

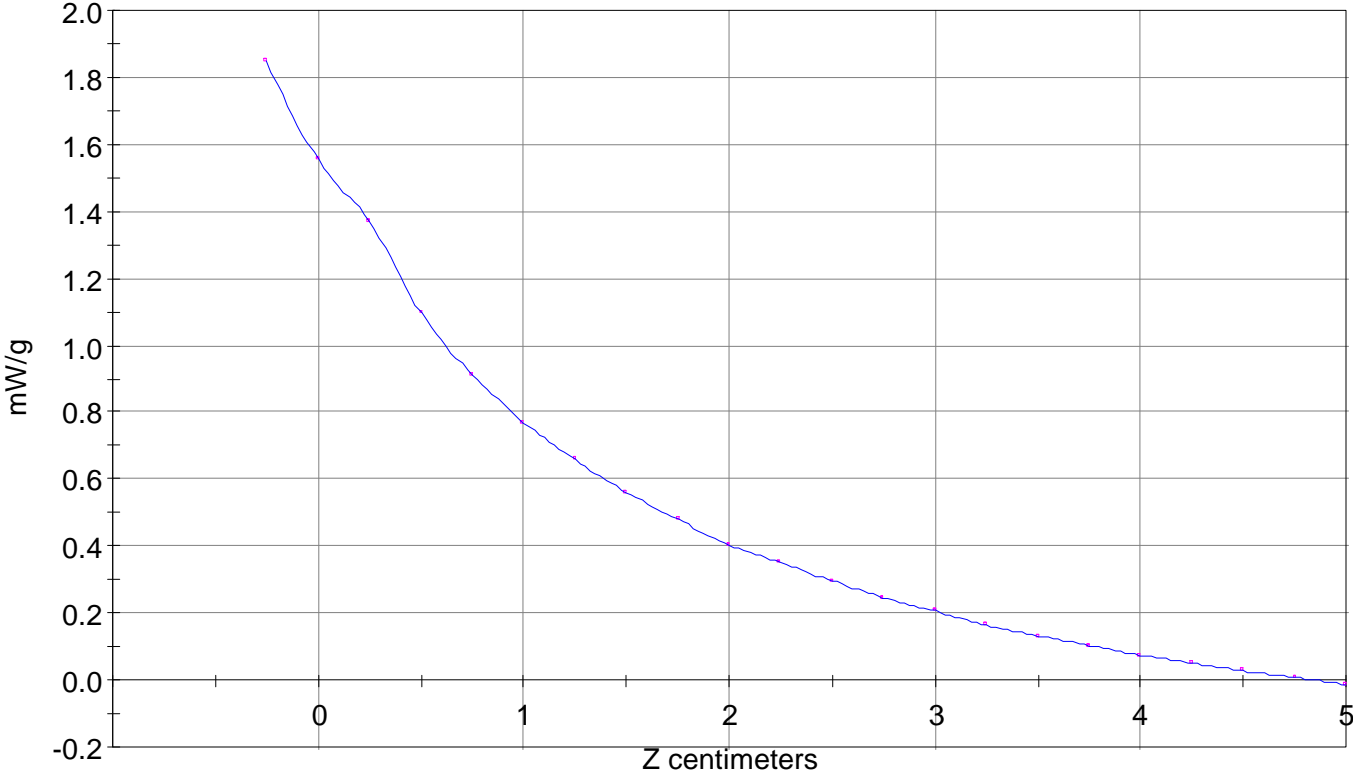
Calc. Voltage @ Surface (Vs) = 0.0253

Voltage @ 1.00 cm (Vt) = 0.0125

Ave. Voltage (Vs+Vt)/2 = 0.0189

Ave. SAR over 1 g (mW/g) = 1.3796

SAR Scan
File : 99051701_ZOOM
Start : 17-May-99 10:32:49 am End : 17-May-99 10:43:18 am
Samsung/A3LSCH3500/038;836.49MHz;W;Helical/Out;
Head/Left Ear;ZOOM/SAR;PCTEST/E Field/0 DegreesBrain/43.400/0.900

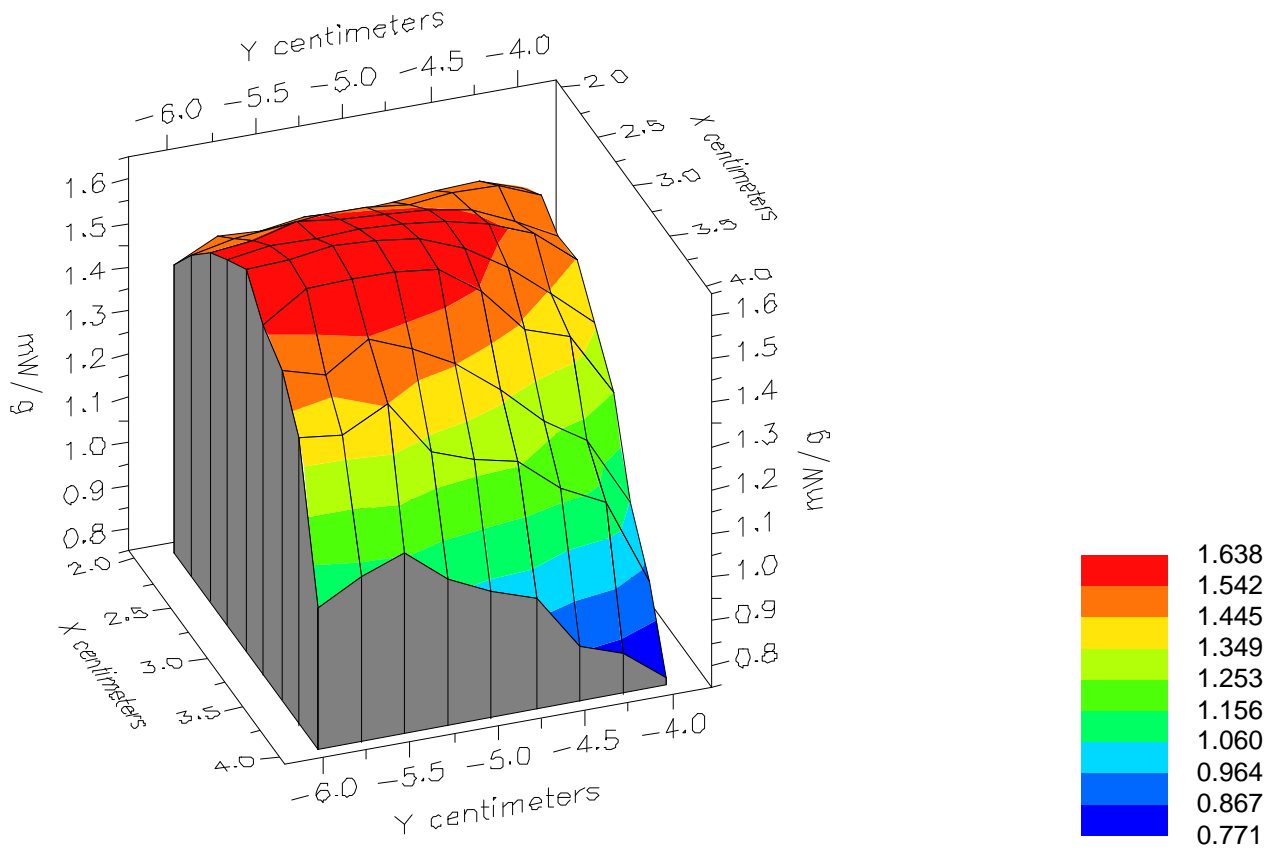


File : 99051701_ZOOM

Start : 17-May-99 10:32:49 am End : 17-May-99 10:43:18 am

Samsung/A3LSCH3500/038;836.49MHz;W;Helical/Out;

Head/Left Ear;ZOOM/SAR;PCTEST/E Field/0 DegreesBrain/43.400/0.900

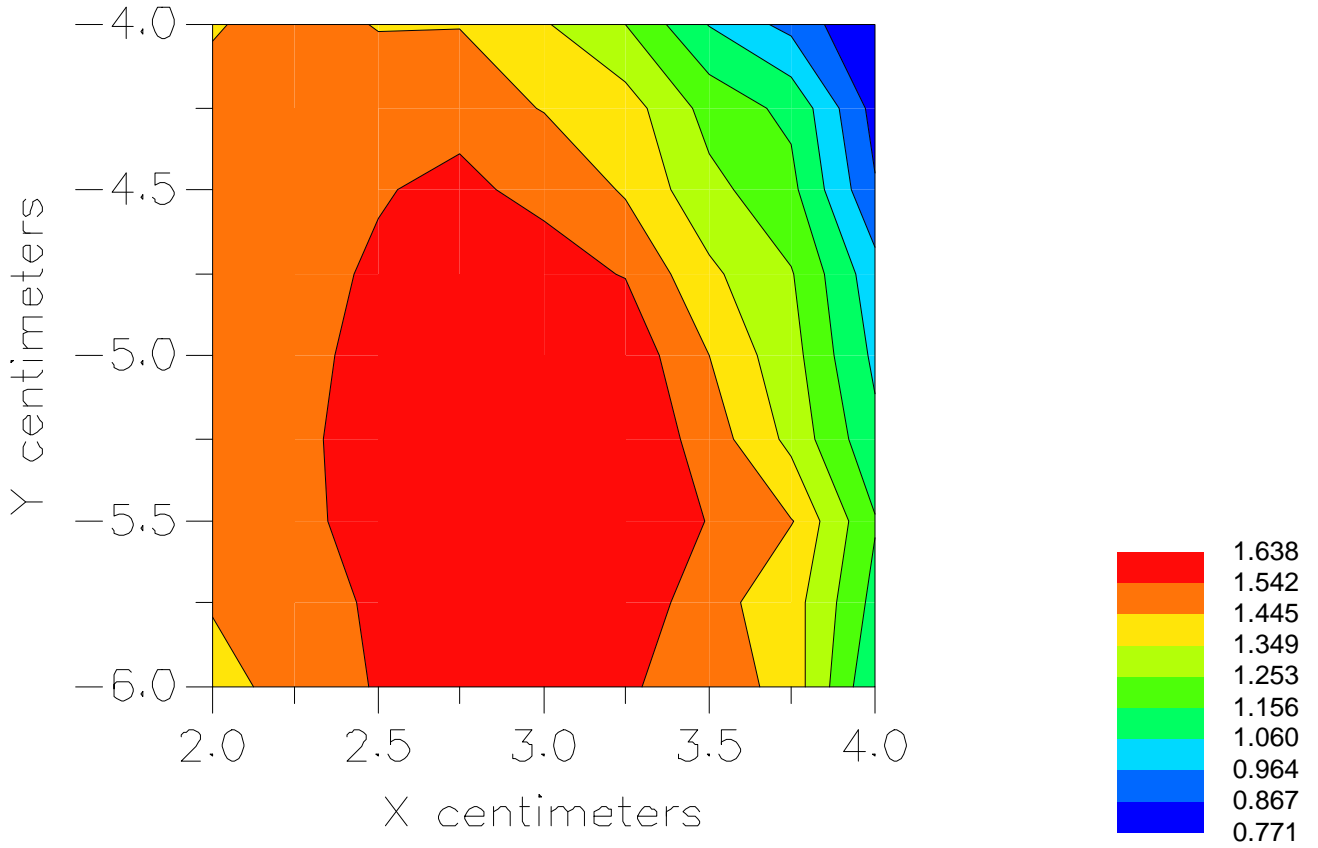


File : 99051701_ZOOM

Start : 17-May-99 10:32:49 am End : 17-May-99 10:43:18 am

Samsung/A3LSCH3500/038;836.49MHz;W;Helical/Out;

Head/Left Ear;ZOOM/SAR;PCTEST/E Field/0 DegreesBrain/43.400/0.900



File : c:/idx3/SYSTEM/SARMEAS3/data/Normal/99051711_ZOOM.VLT
Start : 17-May-99 02:33:53 pm End : 17-May-99 02:44:50 pm

Radio Type : Samsung
Model Number : A3LSCH3500
Serial Number : 038
Frequency : 848.97 MHz
Peak Trans. Pwr : 0.500 W
Start Trans. Pwr: 0.500 W
Antenna Type : Helical
Antenna Posn. : In
Phantom Type : Head
Phantom Posn. : Left Ear
Scan Type : ZOOM/SAR
Probe Name : PCTEST
Field Type : E Field
Orientation : 0 Degrees

Mixture Type = Brain
Mixture Dielectric Constant = 43.400
Mixture Conductivity = 0.900

Comment :
SAMSUNG DUAL BAND PHONE
CHANNEL 799 FM MODE
FM MODE

Robot : PCTEST

Probe Offset = 0.25 cm
Sensor Factor = 0.0108
Conversion Factor = 0.790

PCTEST Amplifier Channel Settings : 0.168 0.136 0.132

Diode Coefficients:

| | | | | | | |
|-----------|------------|-----------|-----------|-----------|----------|----------|
| Channel 1 | An=-10.851 | Bn=86.223 | Cn=38.593 | Dn=-0.016 | Mn=0.026 | Yn=0.000 |
| Channel 2 | An=-21.618 | Bn=92.335 | Cn=34.909 | Dn=-0.019 | Mn=0.029 | Yn=0.000 |
| Channel 3 | An=-11.171 | Bn=50.619 | Cn=19.002 | Dn=-0.025 | Mn=0.052 | Yn=0.001 |

Max Location : X = 3.000, Y = -5.250, Z = 0.000 (cm) Value = 12.095

Measured Values (volts) =

| | | | | | |
|-------------|-------------|-------------|------------|-------------|-------------|
| 1.170E-002 | 9.501E-003 | 7.985E-003 | 6.629E-003 | 5.613E-003 | 4.684E-003 |
| 3.933E-003 | 3.308E-003 | 2.713E-003 | 2.214E-003 | 1.733E-003 | 1.328E-003 |
| 1.009E-003 | 6.578E-004 | 4.086E-004 | 1.647E-004 | -5.638E-005 | -2.702E-004 |
| -4.713E-004 | -5.643E-004 | -6.884E-004 | | | |

Calc. Voltage @ Surface (Vs) = 0.0142

Voltage @ 1.00 cm (Vt) = 0.0066

Ave. Voltage (Vs+Vt)/2 = 0.0104

Ave. SAR over 1 g (mW/g) = 0.7603

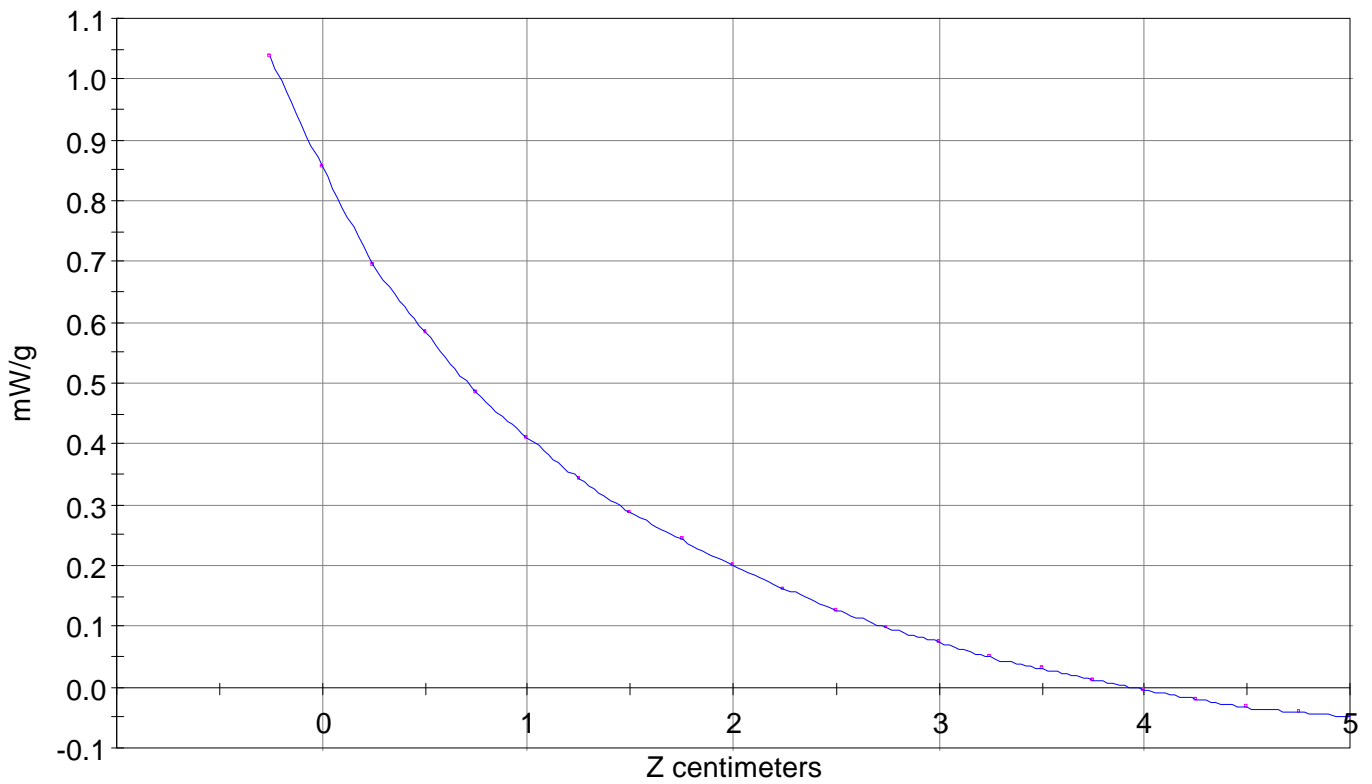
SAR Scan

File : 99051711_ZOOM

Start : 17-May-99 02:33:53 pm End : 17-May-99 02:44:50 pm

Samsung/A3LSCH3500/038;848.97MHz;W;Helical/In;

Head/Left Ear;ZOOM/SAR;PCTEST/E Field/0 DegreesBrain/43.400/0.900



File : c:/idx3/SYSTEM/SARMEAS3/data/Normal/99051710_ZOOM.VLT
Start : 17-May-99 02:20:12 pm End : 17-May-99 02:31:12 pm

Radio Type : Samsung
Model Number : A3LSCH3500
Serial Number : 038
Frequency : 848.97 MHz
Peak Trans. Pwr : 0.500 W
Start Trans. Pwr: 0.500 W
Antenna Type : Helical
Antenna Posn. : Out
Phantom Type : Head
Phantom Posn. : Left Ear
Scan Type : ZOOM/SAR
Probe Name : PCTEST
Field Type : E Field
Orientation : 0 Degrees

Mixture Type = Brain
Mixture Dielectric Constant = 43.400
Mixture Conductivity = 0.900

Comment :
SAMSUNG DUAL BAND PHONE
CHANNEL 799 FM MODE
FM MODE

Robot : PCTEST

Probe Offset = 0.25 cm
Sensor Factor = 0.0108
Conversion Factor = 0.790

PCTEST Amplifier Channel Settings : 0.168 0.136 0.132

Diode Coefficients:

| | | | | | | |
|-----------|------------|-----------|-----------|-----------|----------|----------|
| Channel 1 | An=-10.851 | Bn=86.223 | Cn=38.593 | Dn=-0.016 | Mn=0.026 | Yn=0.000 |
| Channel 2 | An=-21.618 | Bn=92.335 | Cn=34.909 | Dn=-0.019 | Mn=0.029 | Yn=0.000 |
| Channel 3 | An=-11.171 | Bn=50.619 | Cn=19.002 | Dn=-0.025 | Mn=0.052 | Yn=0.001 |

Max Location : X = 3.000, Y = -5.250, Z = 0.000 (cm) Value = 19.789

Measured Values (volts) =

| | | | | | |
|------------|-------------|-------------|------------|------------|------------|
| 1.870E-002 | 1.558E-002 | 1.319E-002 | 1.130E-002 | 9.627E-003 | 8.353E-003 |
| 7.201E-003 | 6.058E-003 | 5.222E-003 | 4.321E-003 | 3.682E-003 | 3.044E-003 |
| 2.435E-003 | 1.934E-003 | 1.490E-003 | 1.096E-003 | 7.779E-004 | 4.085E-004 |
| 1.664E-004 | -1.124E-004 | -2.941E-004 | | | |

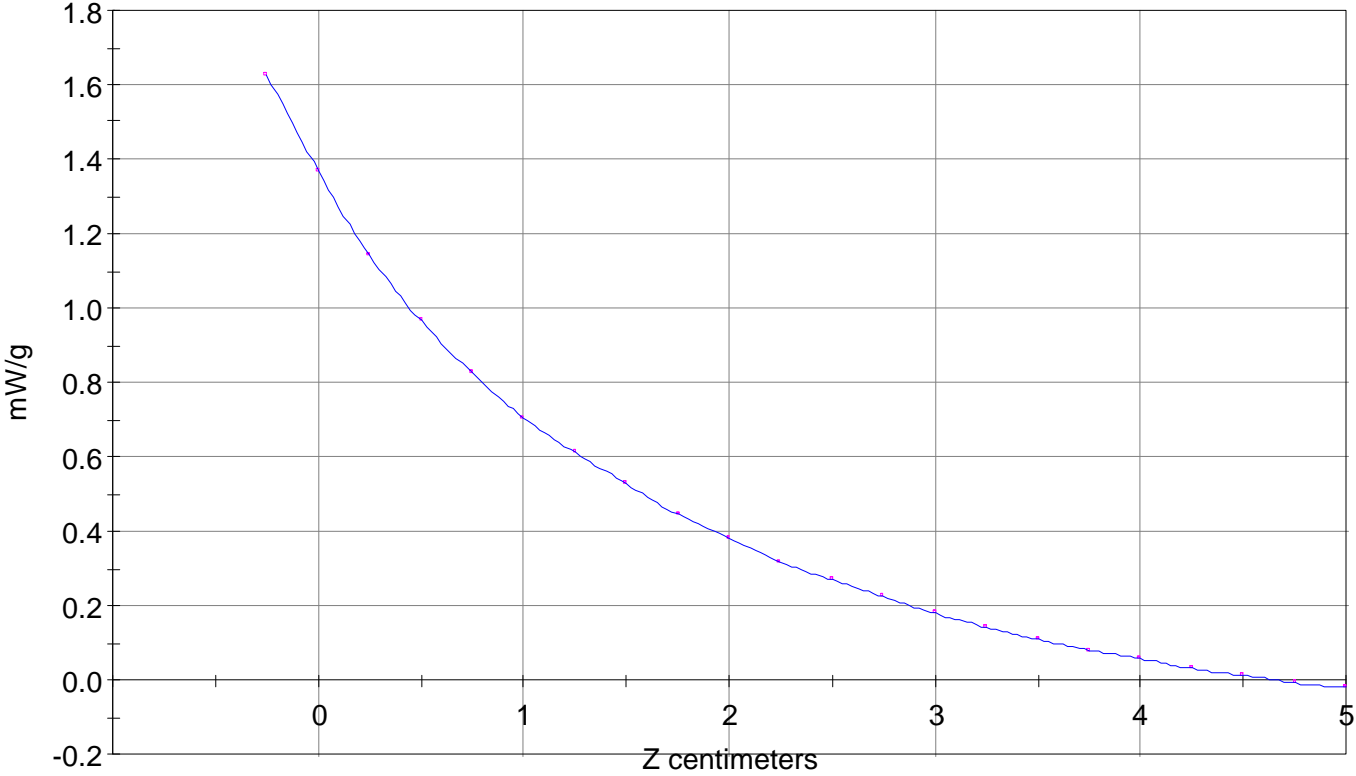
Calc. Voltage @ Surface (Vs) = 0.0223

Voltage @ 1.00 cm (Vt) = 0.0113

Ave. Voltage (Vs+Vt)/2 = 0.0168

Ave. SAR over 1 g (mW/g) = 1.2276

SAR Scan
File : 99051710_ZOOM
Start : 17-May-99 02:20:12 pm End : 17-May-99 02:31:12 pm
Samsung/A3LSCH3500/038;848.97MHz;W;Helical/Out;
Head/Left Ear;ZOOM/SAR;PCTEST/E Field/0 DegreesBrain/43.400/0.900



File : c:/idx3/SYSTEM/SARMEAS3/data/Normal/99051807_ZOOM.VLT
Start : 18-May-99 10:48:26 am End : 18-May-99 11:01:53 am

Radio Type : Samsung
Model Number : A3LSCH3500
Serial Number : 038
Frequency : 1851.25 MHz
Peak Trans. Pwr : 0.200 W
Start Trans. Pwr : 0.200 W
Antenna Type : Helical
Antenna Posn. : In
Phantom Type : Head
Phantom Posn. : Left Ear
Scan Type : ZOOM/SAR
Probe Name : PCTEST
Field Type : E Field
Orientation : 0 Degrees

Mixture Type = Brain
Mixture Dielectric Constant = 42.900
Mixture Conductivity = 1.650

Comment :
SAMSUNG DUAL BAND PHONE
CHANNEL 0025 CDMA PCS MODE

Robot : PCTEST

Probe Offset = 0.25 cm
Sensor Factor = 0.0108
Conversion Factor = 1.200

PCTEST Amplifier Channel Settings : 0.250 0.233 0.225

Max Location : X = 3.000, Y = -4.500, Z = 0.000 (cm) Value = 4.480

Measured Values (volts) =
4.379E-003 3.852E-003 3.413E-003 2.977E-003 2.632E-003 2.378E-003
2.231E-003 2.156E-003 2.130E-003 2.099E-003 2.003E-003 1.840E-003
1.622E-003 1.317E-003 1.049E-003 8.544E-004 7.491E-004 7.569E-004
8.242E-004 9.995E-004 1.116E-003

Calc. Voltage @ Surface (Vs) = 0.0050

Voltage @ 1.00 cm (Vt) = 0.0030

Ave. Voltage (Vs+Vt)/2 = 0.0040

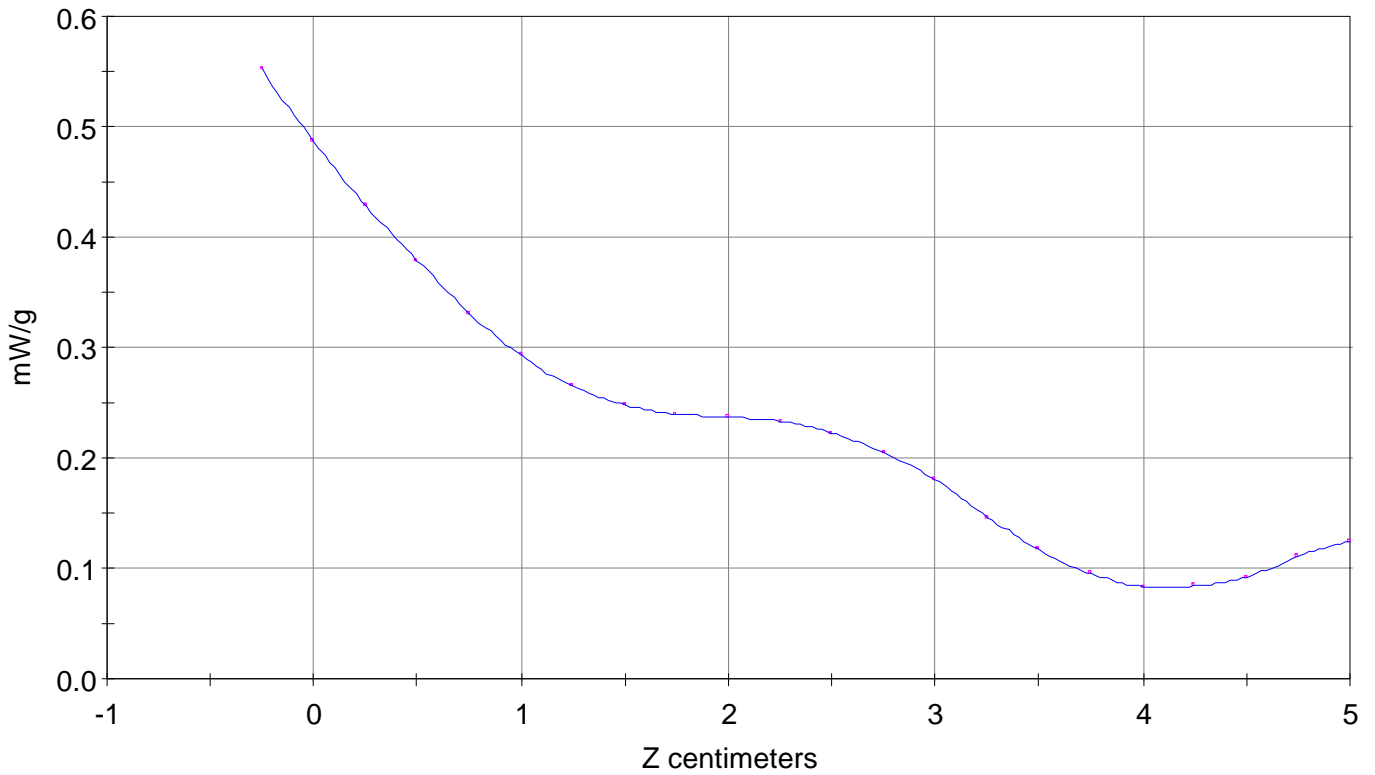
Ave. SAR over 1 g (mW/g) = 0.4410

SAR Scan

File : 99051807_ZOOM

Start : 18-May-99 10:48:26 am End : 18-May-99 11:01:53 am

Samsung/A3LSCH3500/038;1851.25MHz;W;Helical/In;
Head/Left Ear;ZOOM/SAR;PCTEST/E Field/0 DegreesBrain/42.900/1.650



File : c:/idx3/SYSTEM/SARMEAS3/data/Normal/99051803_ZOOM.VLT
Start : 18-May-99 10:02:36 am End : 18-May-99 10:16:06 am

Radio Type : Samsung
Model Number : A3LSCH3500
Serial Number : 038
Frequency : 1851.25 MHz
Peak Trans. Pwr : 0.200 W
Start Trans. Pwr : 0.200 W
Antenna Type : Helical
Antenna Posn. : Out
Phantom Type : Head
Phantom Posn. : Left Ear
Scan Type : ZOOM/SAR
Probe Name : PCTEST
Field Type : E Field
Orientation : 0 Degrees

Mixture Type = Brain
Mixture Dielectric Constant = 42.900
Mixture Conductivity = 1.650

Comment :
SAMSUNG DUAL BAND PHONE
CHANNEL 0025 CDMA PCS MODE

Robot : PCTEST

Probe Offset = 0.25 cm
Sensor Factor = 0.0108
Conversion Factor = 1.200

PCTEST Amplifier Channel Settings : 0.250 0.233 0.225

Max Location : X = 3.000, Y = -4.500, Z = 0.000 (cm) Value = 6.666

Measured Values (volts) =
6.588E-003 5.769E-003 5.168E-003 4.540E-003 3.998E-003 3.626E-003
3.390E-003 3.255E-003 3.212E-003 3.164E-003 3.021E-003 2.798E-003
2.460E-003 2.017E-003 1.625E-003 1.325E-003 1.137E-003 1.162E-003
1.282E-003 1.516E-003 1.693E-003

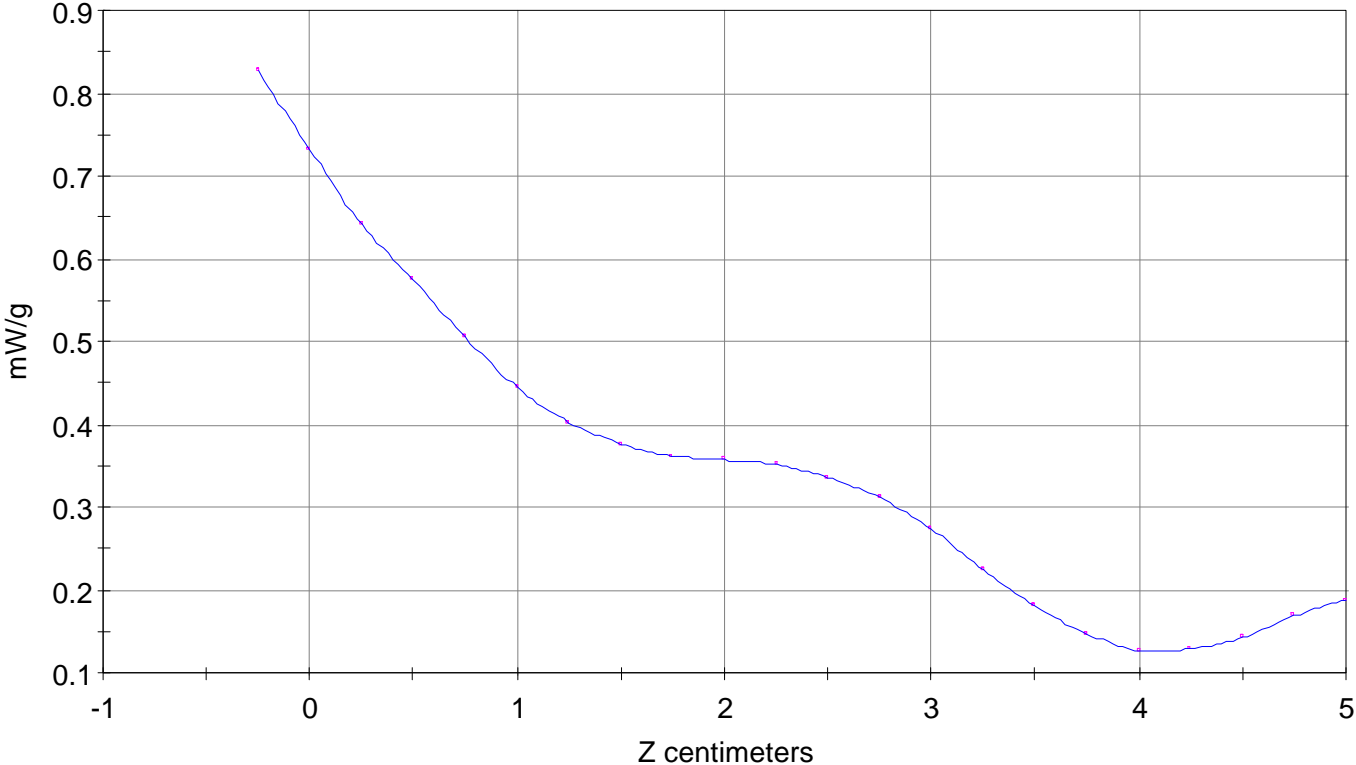
Calc. Voltage @ Surface (Vs) = 0.0074

Voltage @ 1.00 cm (Vt) = 0.0045

Ave. Voltage (Vs+Vt)/2 = 0.0060

Ave. SAR over 1 g (mW/g) = 0.665!

SAR Scan
File : 99051803_ZOOM
Start : 18-May-99 10:02:36 am End : 18-May-99 10:16:06 am
Samsung/A3LSCH3500/038;1851.25MHz;W;Helical/Out;
Head/Left Ear;ZOOM/SAR;PCTEST/E Field/0 DegreesBrain/42.900/1.650



File : c:/idx3/SYSTEM/SARMEAS3/data/Normal/99051805_ZOOM.VLT
Start : 18-May-99 10:29:07 am End : 18-May-99 10:37:39 am

Radio Type : Samsung
Model Number : A3LSCH3500
Serial Number : 038
Frequency : 1880 MHz
Peak Trans. Pwr : 0.200 W
Start Trans. Pwr : 0.200 W
Antenna Type : Helical
Antenna Posn. : In
Phantom Type : Head
Phantom Posn. : Left Ear
Scan Type : ZOOM/SAR
Probe Name : PCTEST
Field Type : E Field
Orientation : 0 Degrees

Mixture Type = Brain
Mixture Dielectric Constant = 42.900
Mixture Conductivity = 1.650

Comment :
SAMSUNG DUAL BAND PHONE
CHANNEL 0600 CDMA PCS MODE

Robot : PCTEST

Probe Offset = 0.25 cm
Sensor Factor = 0.0108
Conversion Factor = 1.200

PCTEST Amplifier Channel Settings : 0.250 0.233 0.225

Max Location : X = 3.000, Y = -4.500, Z = 0.000 (cm) Value = 4.491

Measured Values (volts) =
4.434E-003 3.868E-003 3.401E-003 2.980E-003 2.611E-003 2.399E-003
2.237E-003 2.160E-003 2.128E-003 2.070E-003 2.014E-003 1.846E-003
1.635E-003 1.309E-003 1.031E-003 8.443E-004 7.519E-004 7.613E-004
8.855E-004 1.050E-003 1.127E-003

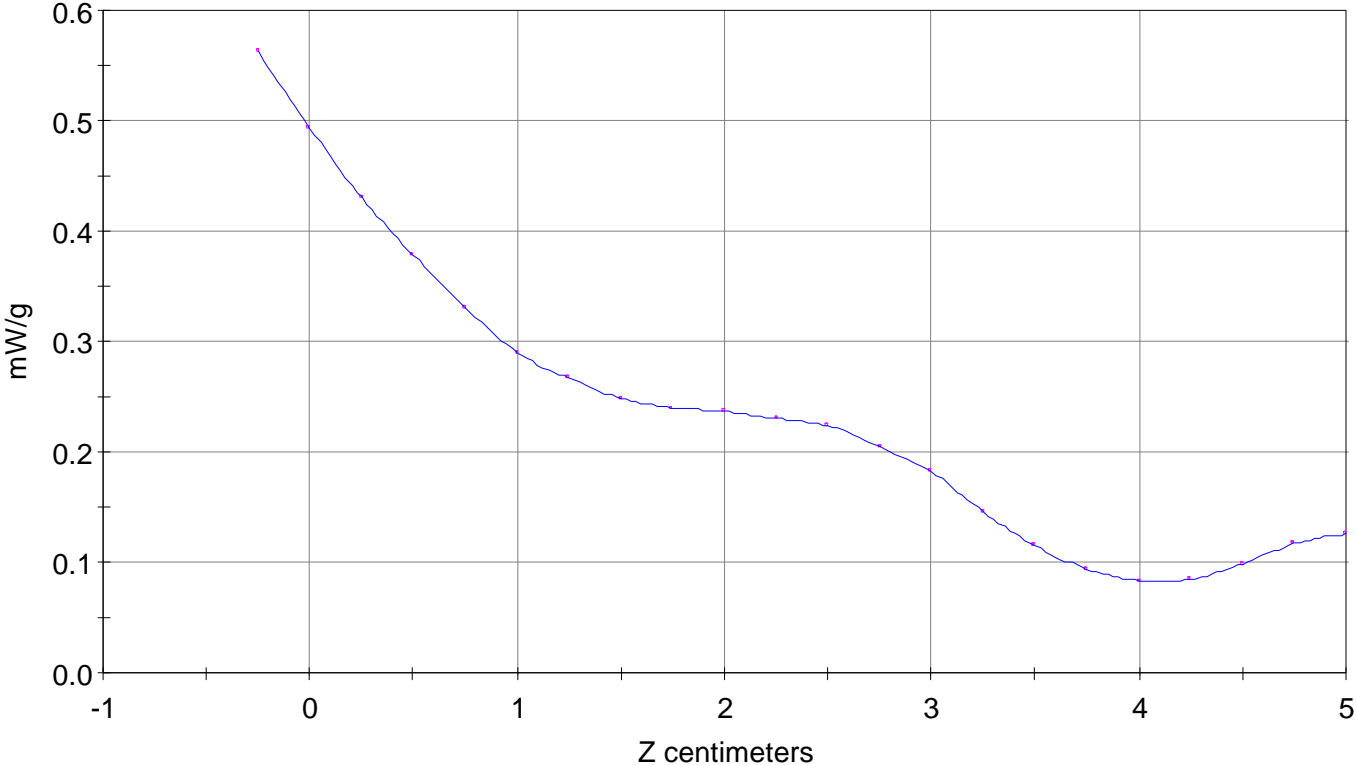
Calc. Voltage @ Surface (Vs) = 0.0051

Voltage @ 1.00 cm (Vt) = 0.0030

Ave. Voltage (Vs+Vt)/2 = 0.0040

Ave. SAR over 1 g (mW/g) = 0.4468

SAR Scan
File : 99051805_ZOOM
Start : 18-May-99 10:29:07 am End : 18-May-99 10:37:39 am
Samsung/A3LSCH3500/038;1880MHz;W;Helical/In;
Head/Left Ear;ZOOM/SAR;PCTEST/E Field/0 DegreesBrain/42.900/1.650



File : c:/idx3/SYSTEM/SARMEAS3/data/Normal/99051802_ZOOM.VLT
Start : 18-May-99 09:47:38 am End : 18-May-99 10:00:56 am

Radio Type : Samsung
Model Number : A3LSCH3500
Serial Number : 038
Frequency : 1880 MHz
Peak Trans. Pwr : 0.200 W
Start Trans. Pwr : 0.200 W
Antenna Type : Helical
Antenna Posn. : Out
Phantom Type : Head
Phantom Posn. : Left Ear
Scan Type : ZOOM/SAR
Probe Name : PCTEST
Field Type : E Field
Orientation : 0 Degrees

Mixture Type = Brain
Mixture Dielectric Constant = 42.900
Mixture Conductivity = 1.650

Comment :
SAMSUNG DUAL BAND PHONE
CHANNEL 600 CDMA PCS MODE

Robot : PCTEST

Probe Offset = 0.25 cm
Sensor Factor = 0.0108
Conversion Factor = 1.200

PCTEST Amplifier Channel Settings : 0.250 0.233 0.225

Max Location : X = 3.000, Y = -4.500, Z = 0.000 (cm) Value = 6.790

Measured Values (volts) =
6.516E-003 5.806E-003 5.108E-003 4.562E-003 4.040E-003 3.623E-003
3.427E-003 3.301E-003 3.246E-003 3.182E-003 3.029E-003 2.780E-003
2.422E-003 2.011E-003 1.601E-003 1.299E-003 1.152E-003 1.187E-003
1.331E-003 1.578E-003 1.715E-003

Calc. Voltage @ Surface (Vs) = 0.0074

Voltage @ 1.00 cm (Vt) = 0.0046

Ave. Voltage (Vs+Vt)/2 = 0.0060

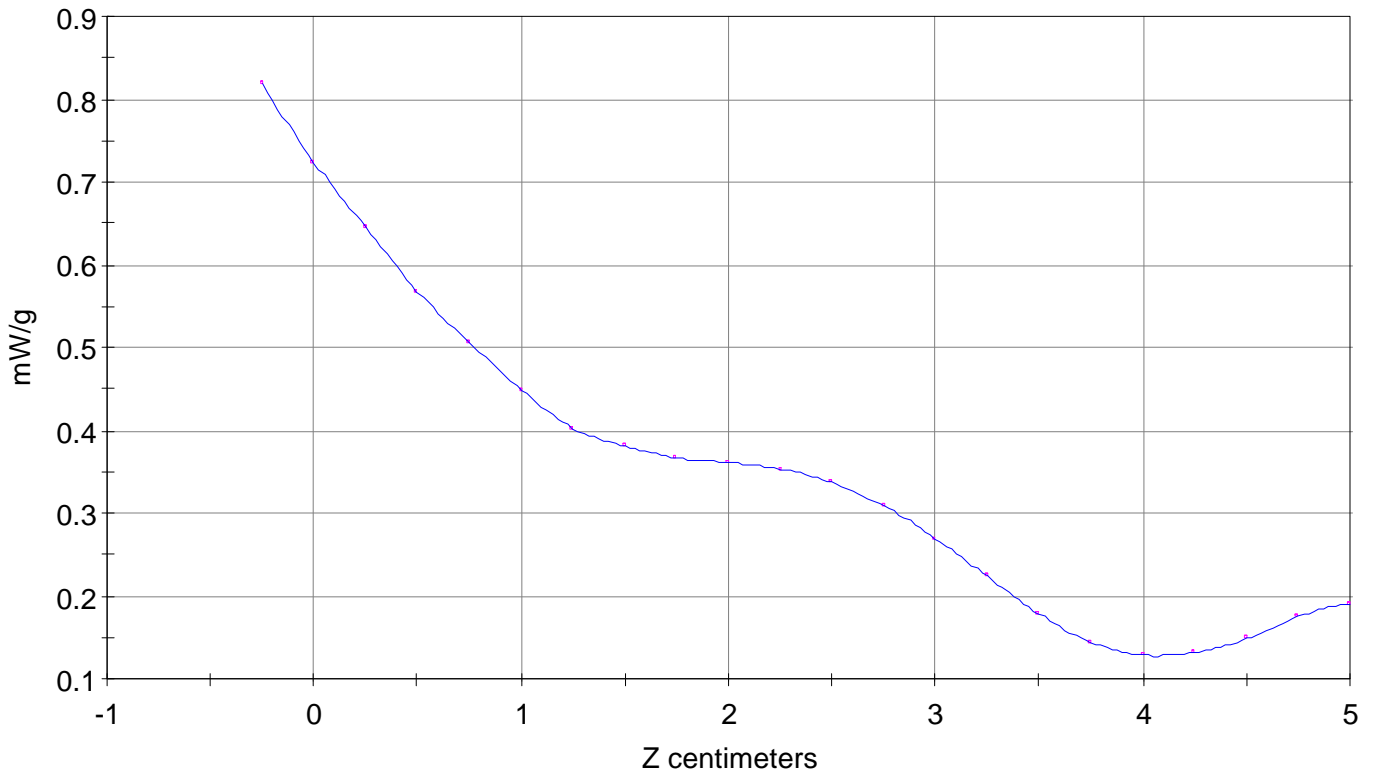
Ave. SAR over 1 g (mW/g) = 0.6623

SAR Scan

File : 99051802_ZOOM

Start : 18-May-99 09:47:38 am End : 18-May-99 10:00:56 am

Samsung/A3LSCH3500/038;1880MHz;W;Helical/Out;
Head/Left Ear;ZOOM/SAR;PCTEST/E Field/0 DegreesBrain/42.900/1.650



File : c:/idx3/SYSTEM/SARMEAS3/data/Normal/99051809_ZOOM.VLT
Start : 18-May-99 11:55:07 am End : 18-May-99 12:03:40 pm

Radio Type : Samsung
Model Number : A3LSCH3500
Serial Number : 038
Frequency : 1908.75 MHz
Peak Trans. Pwr : 0.200 W
Start Trans. Pwr : 0.200 W
Antenna Type : Helical
Antenna Posn. : In
Phantom Type : Head
Phantom Posn. : Left Ear
Scan Type : ZOOM/SAR
Probe Name : PCTEST
Field Type : E Field
Orientation : 0 Degrees

Mixture Type = Brain
Mixture Dielectric Constant = 42.900
Mixture Conductivity = 1.650

Comment :
SAMSUNG DUAL BAND PHONE
CHANNEL 1175 CDMA PCS MODE

Robot : PCTEST

Probe Offset = 0.25 cm
Sensor Factor = 0.0108
Conversion Factor = 1.200

PCTEST Amplifier Channel Settings : 0.250 0.233 0.225

Max Location : X = 3.250, Y = -4.250, Z = 0.000 (cm) Value = 3.840

Measured Values (volts) =
3.770E-003 3.172E-003 2.802E-003 2.392E-003 2.075E-003 1.867E-003
1.711E-003 1.644E-003 1.610E-003 1.616E-003 1.556E-003 1.454E-003
1.287E-003 1.077E-003 8.563E-004 7.101E-004 6.123E-004 5.847E-004
6.505E-004 7.612E-004 8.372E-004

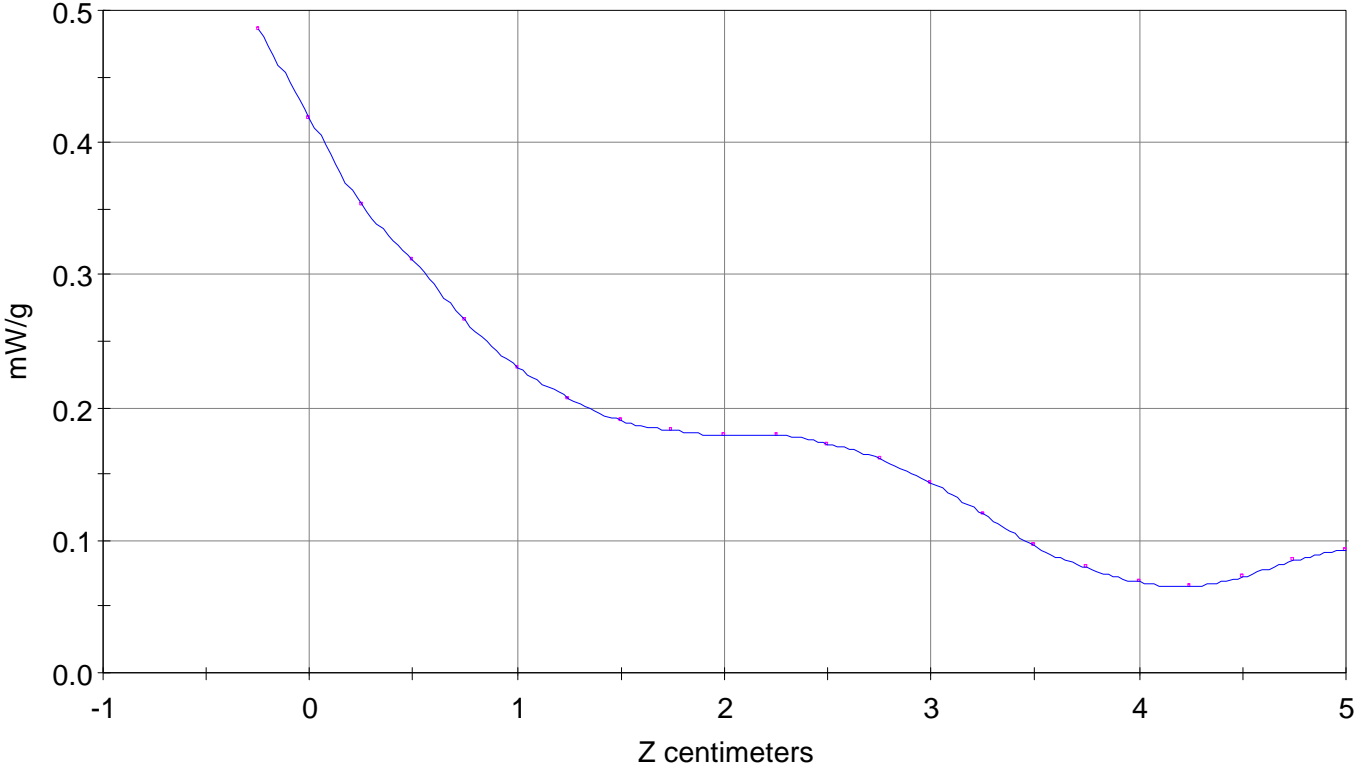
Calc. Voltage @ Surface (Vs) = 0.0044

Voltage @ 1.00 cm (Vt) = 0.0024

Ave. Voltage (Vs+Vt)/2 = 0.0034

Ave. SAR over 1 g (mW/g) = 0.3759

SAR Scan
File : 99051809_ZOOM
Start : 18-May-99 11:55:07 am End : 18-May-99 12:03:40 pm
Samsung/A3LSCH3500/038;1908.75MHz;W;Helical/In;
Head/Left Ear;ZOOM/SAR;PCTEST/E Field/0 DegreesBrain/42.900/1.650



File : c:/idx3/SYSTEM/SARMEAS3/data/Normal/99051808_ZOOM.VLT
Start : 18-May-99 11:15:42 am End : 18-May-99 11:29:09 am

Radio Type : Samsung
Model Number : A3LSCH3500
Serial Number : 038
Frequency : 1908.75 MHz
Peak Trans. Pwr : 0.200 W
Start Trans. Pwr : 0.200 W
Antenna Type : Helical
Antenna Posn. : Out
Phantom Type : Head
Phantom Posn. : Left Ear
Scan Type : ZOOM/SAR
Probe Name : PCTEST
Field Type : E Field
Orientation : 0 Degrees

Mixture Type = Brain
Mixture Dielectric Constant = 42.900
Mixture Conductivity = 1.650

Comment :
SAMSUNG DUAL BAND PHONE
CHANNEL 1175 CDMA PCS MODE

Robot : PCTEST

Probe Offset = 0.25 cm
Sensor Factor = 0.0108
Conversion Factor = 1.200

PCTEST Amplifier Channel Settings : 0.250 0.233 0.225

Max Location : X = 3.000, Y = -4.500, Z = 0.000 (cm) Value = 6.305

Measured Values (volts) =
6.023E-003 5.329E-003 4.726E-003 4.132E-003 3.685E-003 3.303E-003
3.071E-003 2.940E-003 2.917E-003 2.852E-003 2.733E-003 2.527E-003
2.220E-003 1.877E-003 1.465E-003 1.192E-003 1.041E-003 1.062E-003
1.188E-003 1.412E-003 1.553E-003

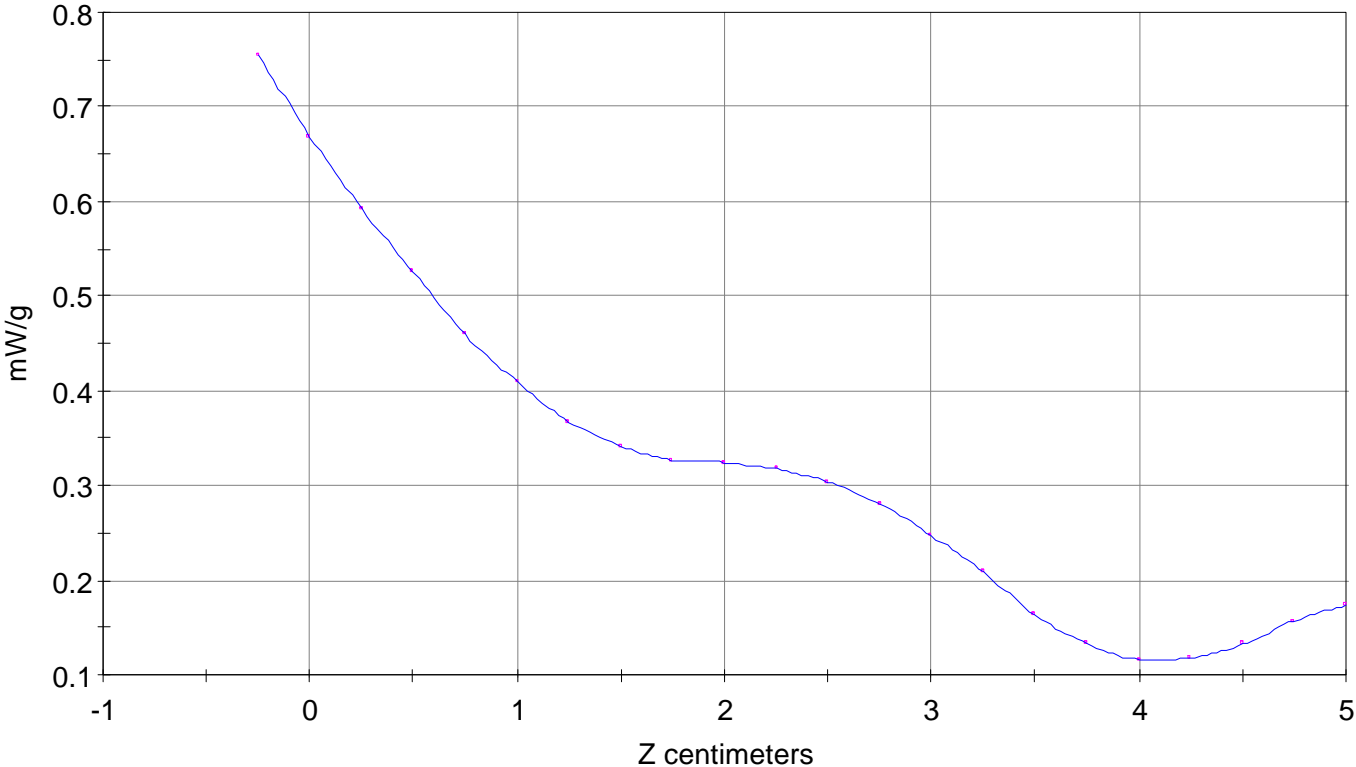
Calc. Voltage @ Surface (Vs) = 0.0068

Voltage @ 1.00 cm (Vt) = 0.0041

Ave. Voltage (Vs+Vt)/2 = 0.0055

Ave. SAR over 1 g (mW/g) = 0.6073

SAR Scan
File : 99051808_ZOOM
Start : 18-May-99 11:15:42 am End : 18-May-99 11:29:09 am
Samsung/A3LSCH3500/038;1908.75MHz;W;Helical/Out;
Head/Left Ear;ZOOM/SAR;PCTEST/E Field/0 DegreesBrain/42.900/1.650



File : c:/idx3/SYSTEM/SARMEAS3/data/Normal/99052609_SAR.VLT
Start : 26-May-99 11:50:25 am End : 26-May-99 11:57:00 am

Radio Type : SAMSUNG
Model Number : A3LSCH3500
Serial Number : 38
Frequency : 836.49 MHz
Peak Trans. Pwr : 0.500 W
Start Trans. Pwr : 0.500 W
Antenna Type : Helical
Antenna Posn. : Out
Phantom Type : Head
Phantom Posn. : Left Ear
Scan Type : ZOOM/SAR 10g
Probe Name : PCTEST
Field Type : E Field
Orientation : 0 Degrees

Mixture Type = Muscle
Mixture Dielectric Constant = 56.200
Mixture Conductivity = 0.950

Comment :
SAMSUNG DUAL BAND PHONE
CHANNEL 383 FM MODE
HAND SAR

Robot : PCTEST

Probe Offset = 0.25 cm
Sensor Factor = 0.0108
Conversion Factor = 0.895

PCTEST Amplifier Channel Settings : 0.168 0.136 0.132

Diode Coefficients:

| | | | | | | |
|-----------|------------|-----------|-----------|-----------|----------|----------|
| Channel 1 | An=-10.851 | Bn=86.223 | Cn=38.593 | Dn=-0.016 | Mn=0.026 | Yn=0.000 |
| Channel 2 | An=-21.618 | Bn=92.335 | Cn=34.909 | Dn=-0.019 | Mn=0.029 | Yn=0.000 |
| Channel 3 | An=-11.171 | Bn=50.619 | Cn=19.002 | Dn=-0.025 | Mn=0.052 | Yn=0.001 |

Max Location : X = 3.500, Y = -3.250, Z = 0.000 (cm) Value = 49.595

Ave. SAR over 10 g (mW/g) = 0.7111

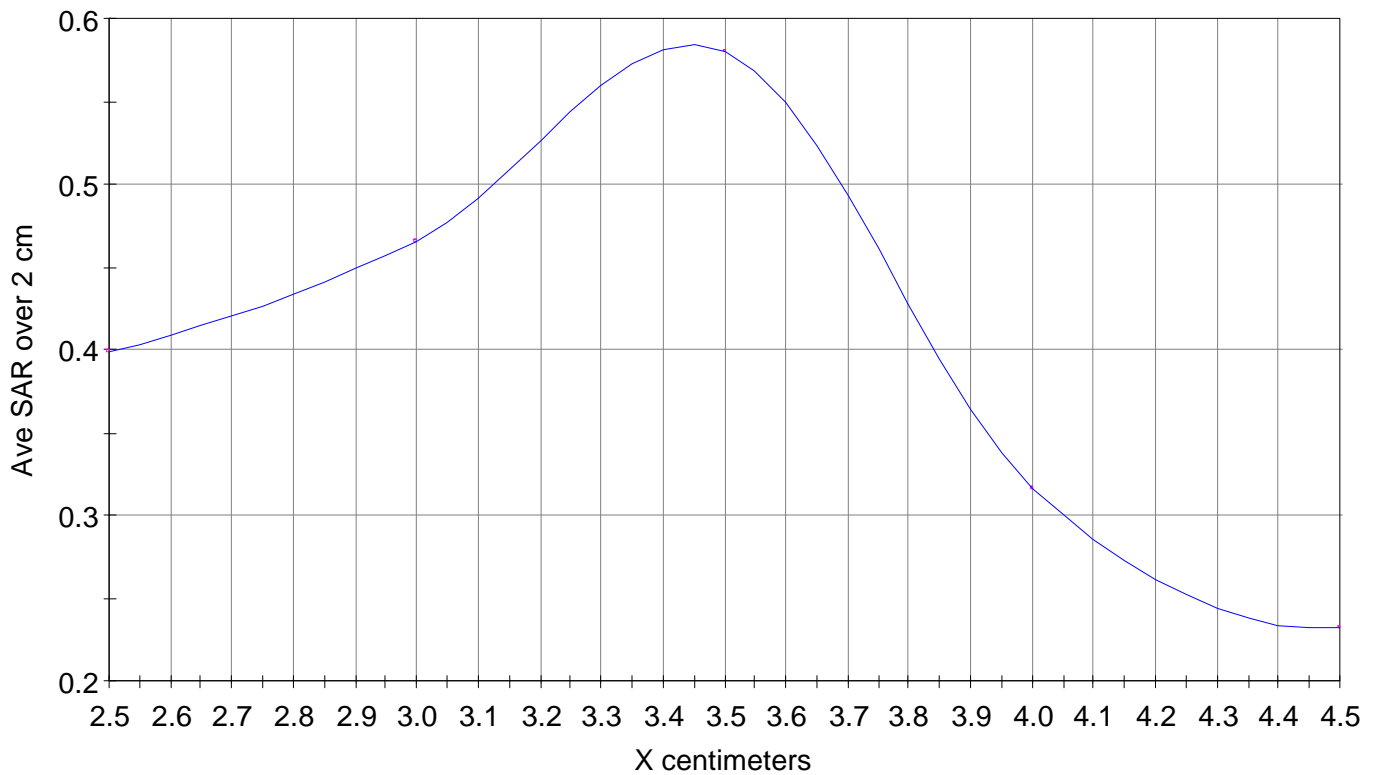
X-Z Plane Slice Y=-3.250

File : 99052609_SAR

Start : 26-May-99 11:50:25 am End : 26-May-99 11:57:00 am

SAMSUNG/A3LSCH3500/38;836.49MHz;W;Helical/Out;

Head/Left Ear;ZOOM/SAR 10g;PCTEST/E Field/0 DegreesMuscle/56.200/0.950

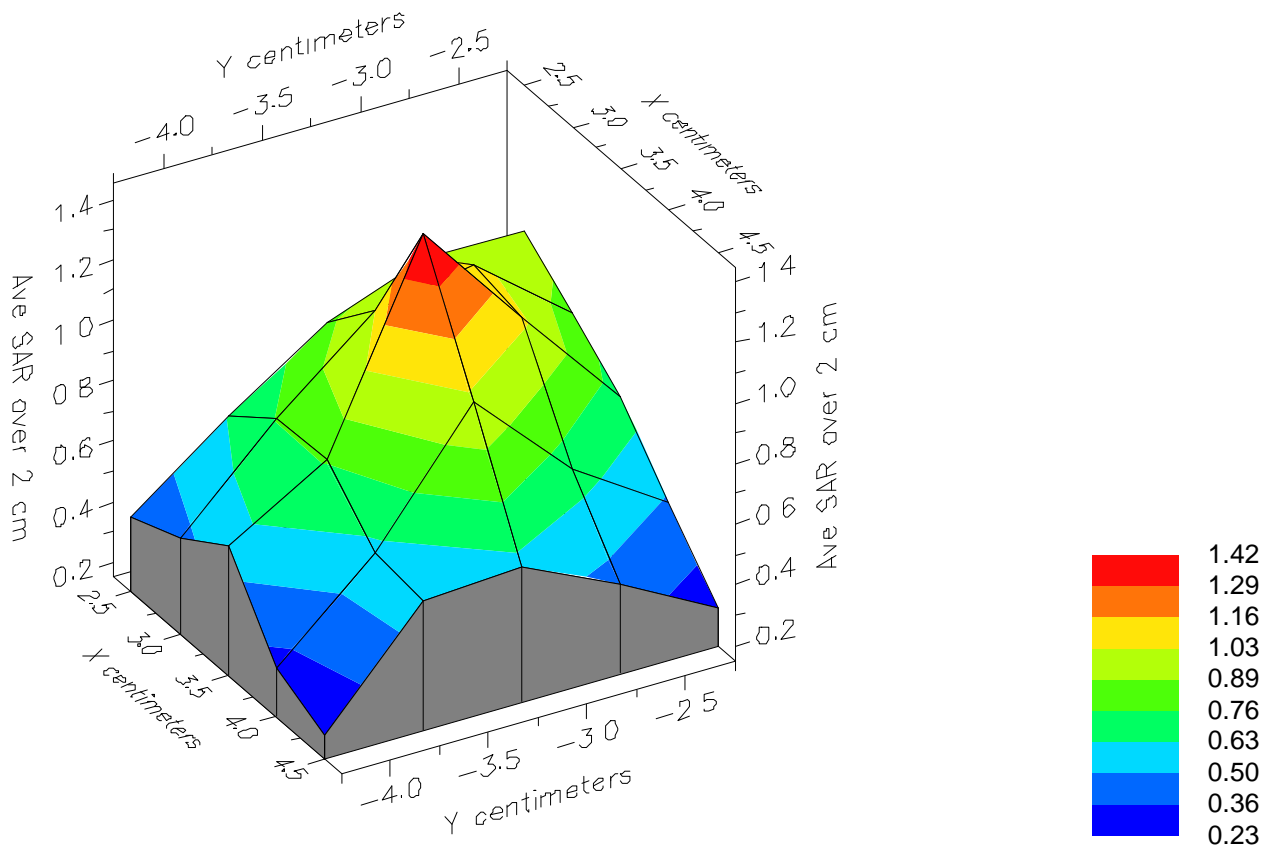


File : 99052609_SAR

Start : 26-May-99 11:50:25 am End : 26-May-99 11:57:00 am

SAMSUNG/A3LSCH3500/38;836.49MHz;W;Helical/Out;

Head/Left Ear;ZOOM/SAR 10g;PCTEST/E Field/0 DegreesMuscle/56.200/0.950



File : 99052609_SAR

Start : 26-May-99 11:50:25 am End : 26-May-99 11:57:00 am

SAMSUNG/A3LSCH3500/38;836.49MHz;W;Helical/Out;

Head/Left Ear;ZOOM/SAR 10g;PCTEST/E Field/0 DegreesMuscle/56.200/0.950

