

FCC ID:A3LS24E650DW

Date:2015/5/12

TO: Federal Communication Commission

Please be notified that we, the undersigned, **Samsung Electronics Co., Ltd.** declare that the models can use different Main Board, Power Board and Panel. The models information as bellow:

1:models information

The four test reports are for four different models. Please refer to the below form for detailed information:

No.	Main Board	Power Board	Panel	Tset report No.
1	BN41-02235B	P3514Z_FPN	LTM240CL04	LBE20152595
2	BN41-02234A	P3514Z_FPN	LTM240CL04	LBE20152659
3	BN41-02234A	P2514Z_FPN	HR236WU1-300	LBE20152664
4	BN41-02233A	P2514Z_FPN	HR236WU1-300	LBE20152663

BN41-02235B have DVI, DP and VGA port

BN41-02234A have DVI, DP, VGA and Audio out port

BN41-02233A have HDMI, VGA, DP and Audio out port

2:the model S24E650XL and S24E650XW have USB port on stand

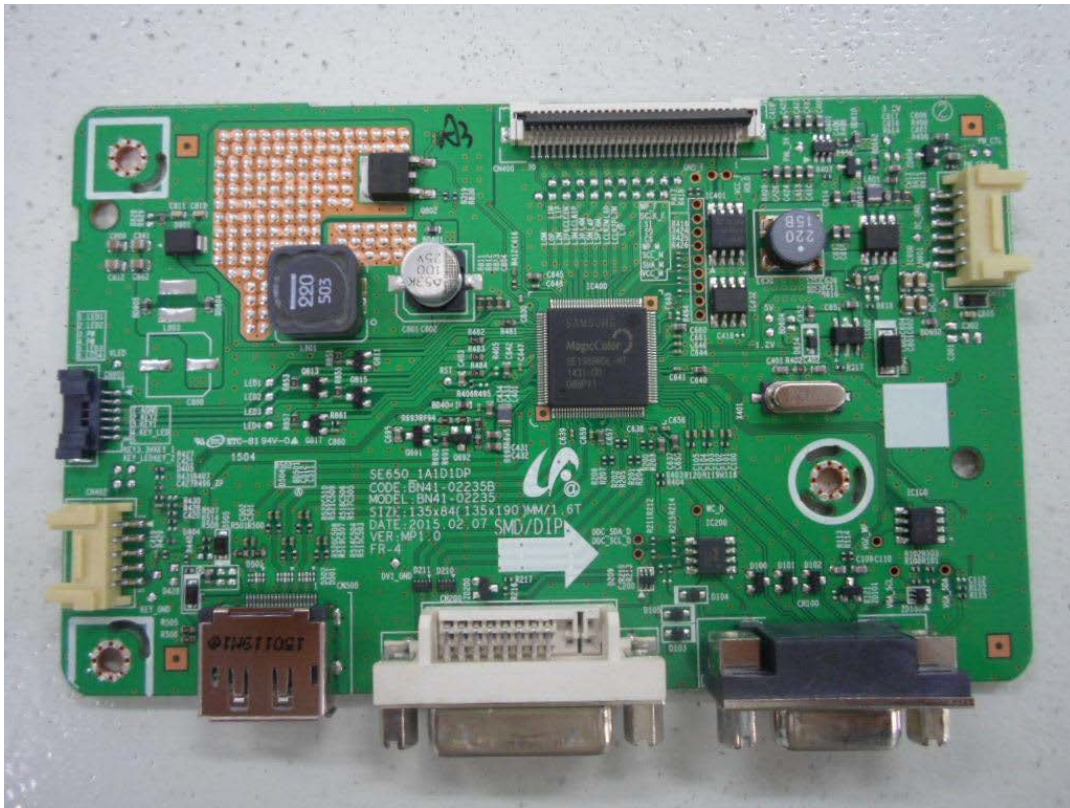
The model S24E650DW and S24E650PL have no USB port on stand.

Thank you!

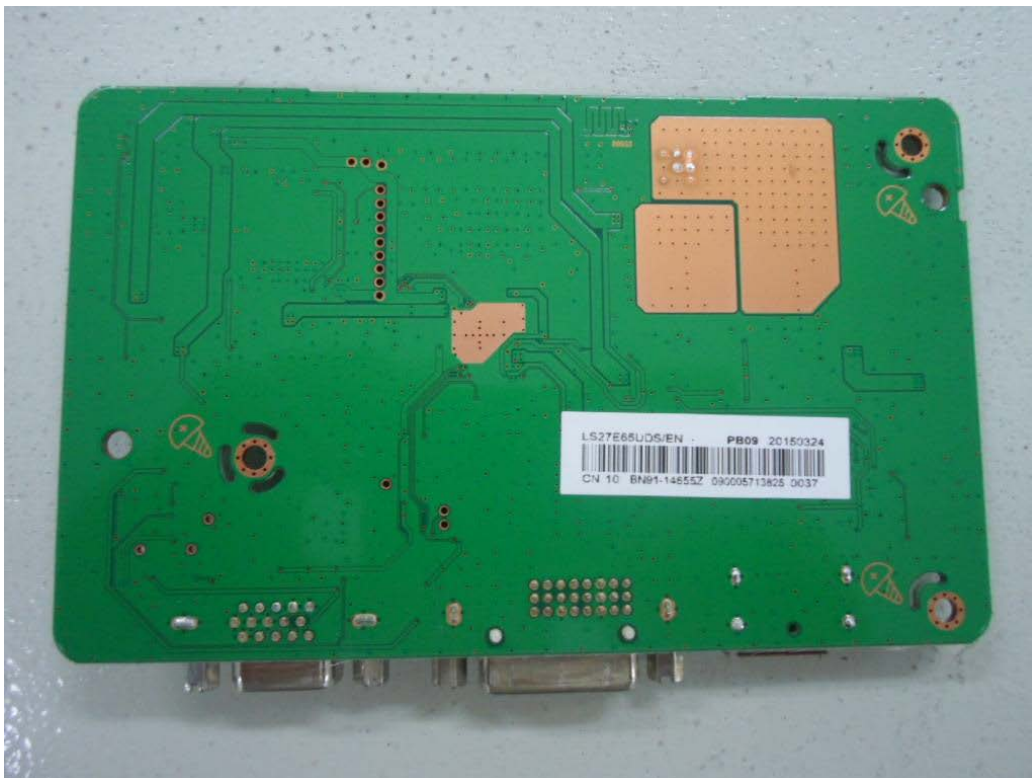


Peter Ra, Manager
Samsung Electronics Co., Ltd.

The photos



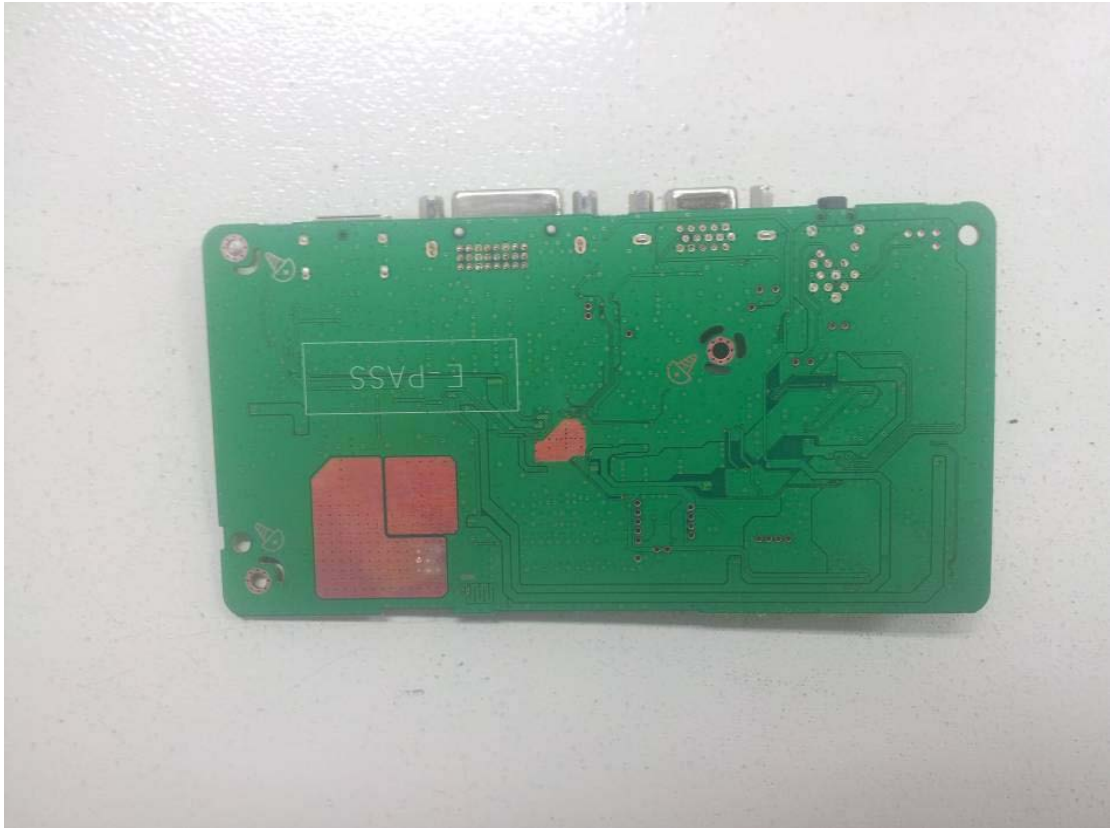
BN41-02235B front view



BN41-02235B rear view



BN41-02234A front view



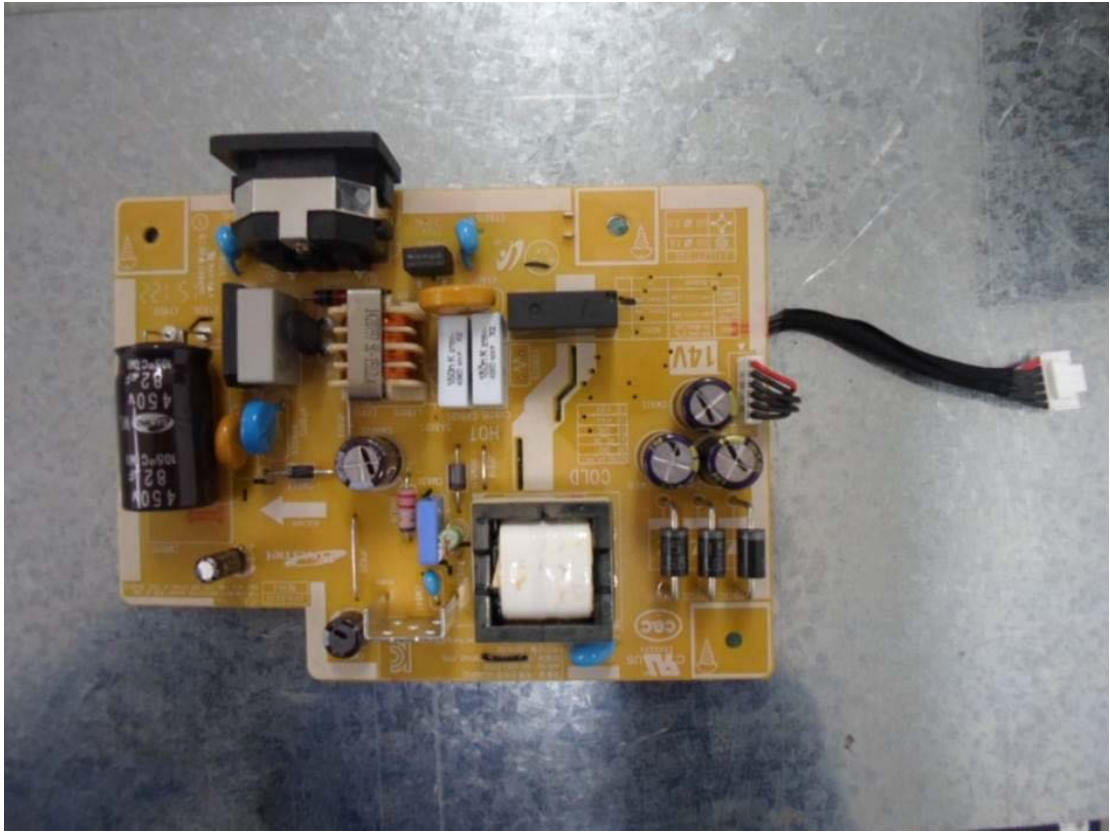
BN41-02234A rear view



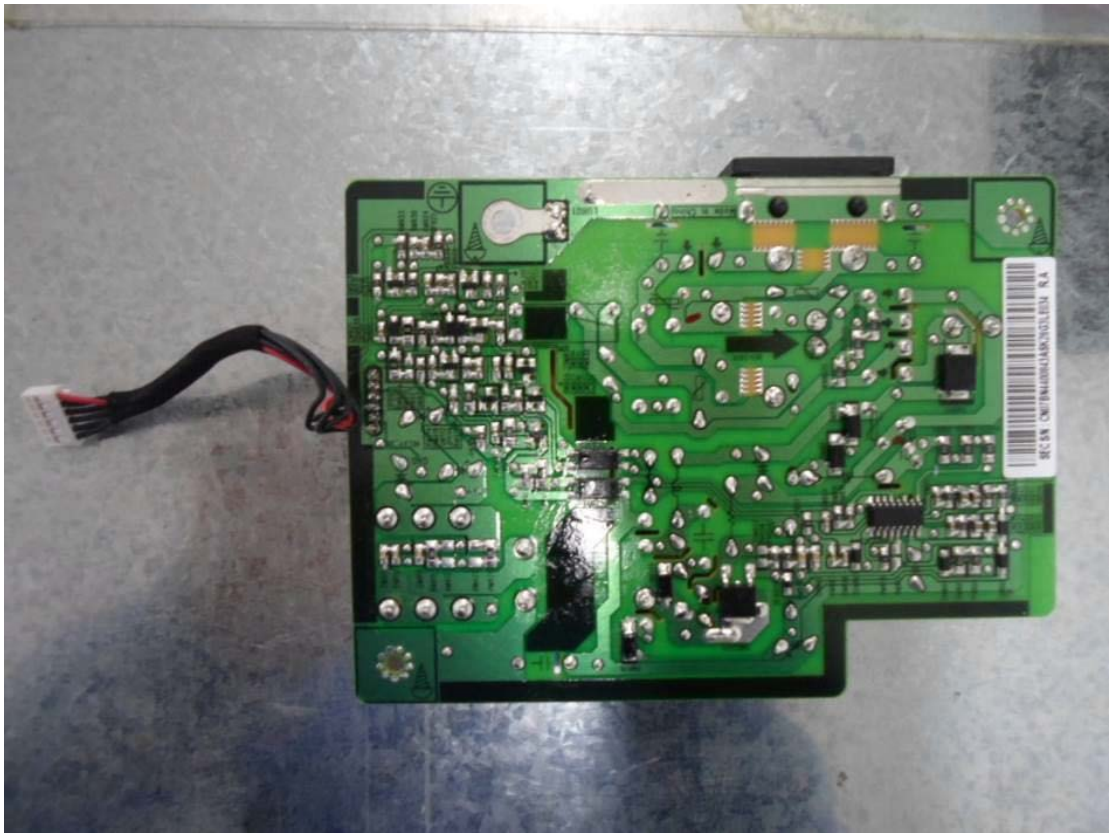
BN41-02233A front view



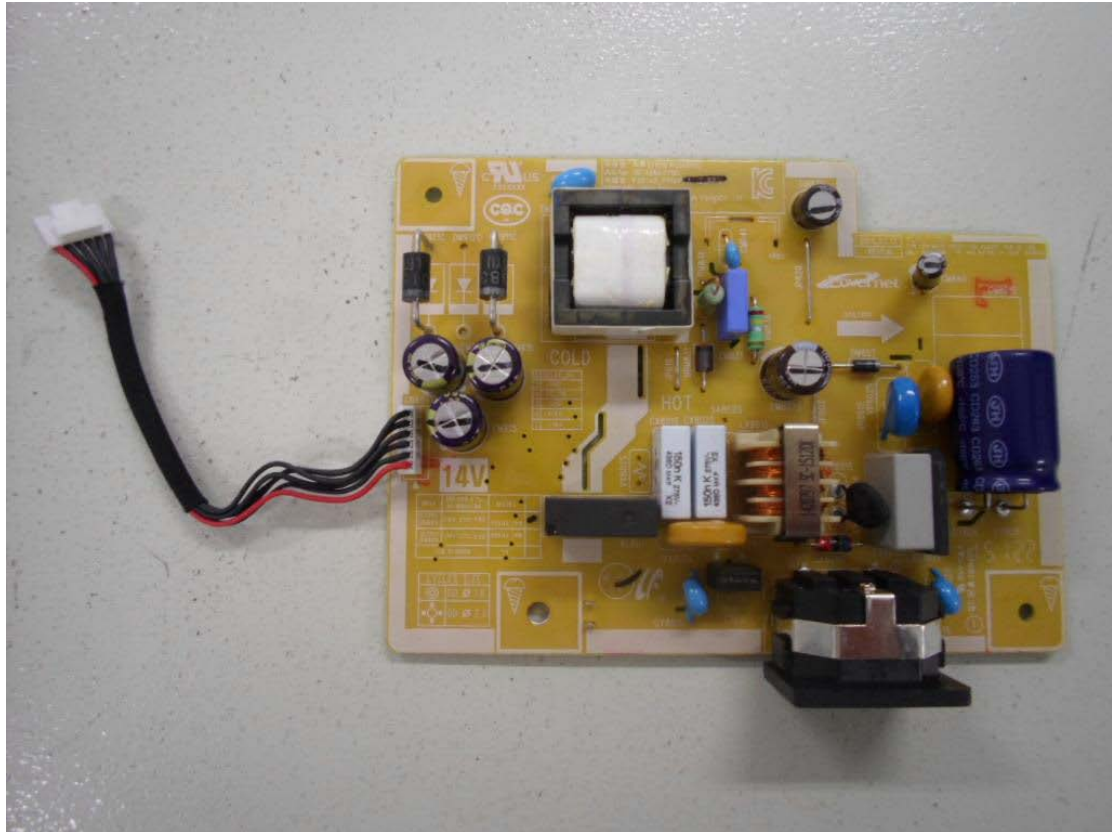
BN41-02233A rear view



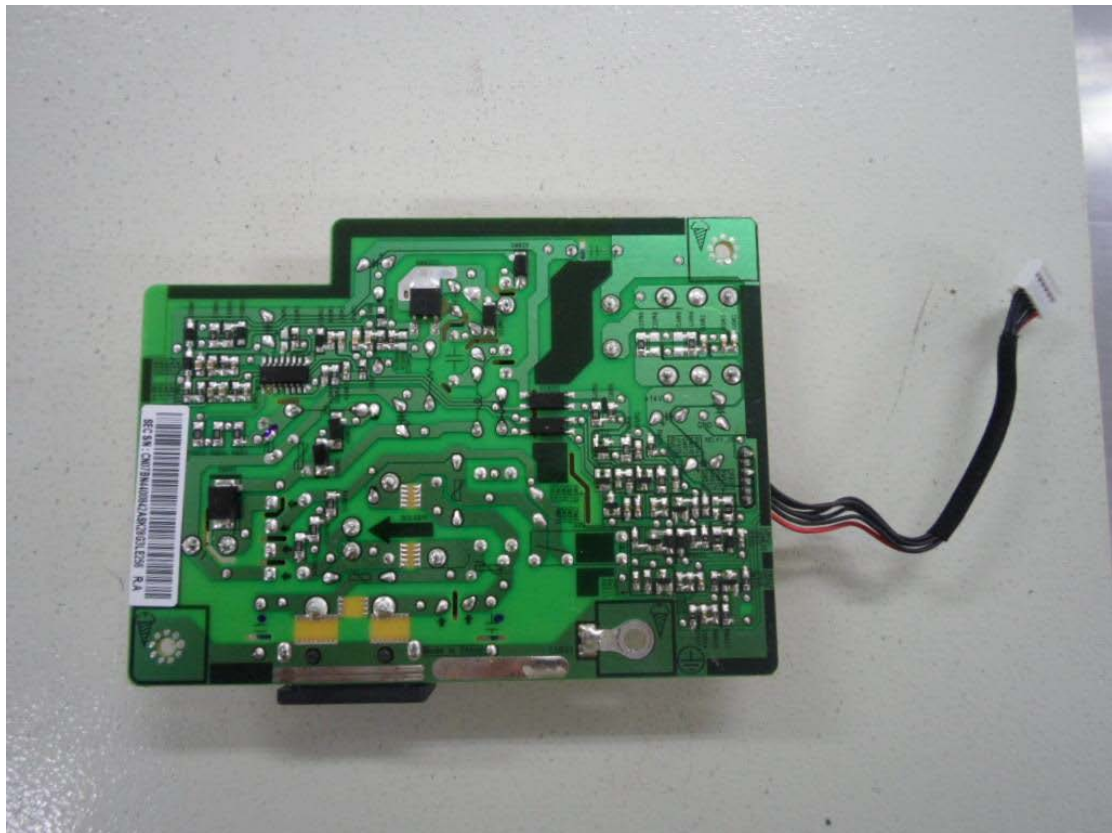
P3514Z_FPN front view



P3514Z_FPN rear view



P2514Z_FPN front view



P2514Z_FPN rear view



LTM240CL04 front view



LTM240CL04 rear view



LTM240CL04 rear view



HR236WU1-300 front view



HR236WU1-300 rear view



HR236WU1-300 rear view