



SAR Evaluation Report

in accordance with the requirements of
FCC Report and Order: ET Docket 93-62, and OET Bulletin 65 Supplement C

for

WIRELESS HAND PC

MODEL: S160

FCC ID: A3LS160

July 1, 2002

REPORT NO: 02I1394-4

Prepared for

**SAMSUNG ELECTRONICS CO., LTD.
#416, MAETAN-3DONG, PALDAL-GU
SUWON CITY, GYEONGGI-DO 442-742, KOREA**

Prepared by

**COMPLIANCE CERTIFICATION SERVICES
561F MONTEREY ROAD,
MORGAN HILL, CA 95037, USA
TEL: (408) 463-0885**

CERTIFICATE OF COMPLIANCE (SAR EVALUATION)

Dates of Tests: July 1, 2002

Report No: 0211394-4

APPLICANT:	SAMSUNG ELECTRONICS CO., LTD. #416, MAETAN-3DONG, PALDAL-GU SUWON CITY, GYEONGGI-DO 442-742, KOREA
TRADE NAME:	SAMSUNG
MODEL:	S160
FCC ID:	A3LS160
DEVICE CATEGORY:	PORTABLE DEVICES
EXPOSURE CATEGORY:	GENERAL POPULATION/UNCONTROLLED EXPOSURE

Test Sample is a: Production unit
Operating Mode: Maximum continuous output
Tx Frequency: 2412 ~ 2462 MHz
Max. RF Output Power (Conducted): 18.21 dBm (2412MHz)
Max. SAR (1g): 0.526 mW/g (2462 MHz)
Separate distance: Direct touched to the phantom
Application Type: Certification
FCC Rule Part(s): §15.247



This wireless portable device has been shown to be capable of compliance for localized specific absorption rate (SAR) for uncontrolled environment/general population exposure limits specified in ANSI/IEEE Std. C95.1-1992 and had been tested in accordance with the measurement procedures specified in FCC OET 65 Supplement C (released on 6/29/2001 see Test Report).

I attest to the accuracy of data. All measurements reported herein were performed by me or were made under my supervision and are correct to the best of my knowledge and belief. I assume full responsibility for the completeness of these measurements and vouch for the qualifications of all persons taking them.

Handwritten signature of Steve Cheng in black ink.

Steve Cheng
EMC Engineering Manager

TABLE OF CONTENT

1. EUT DESCRIPTION.....	4
2. REQUIREMENTS FOR COMPLIANCE TESTING DEFINED BY THE FCC.....	5
3. DOSIMETRIC ASSESSMENT SETUP	5
3.1. MEASUREMENT SYSTEM DIAGRAM.....	6
3.2. SYSTEM COMPONENTS	7
3.3. EUT SET-UP PHOTOS	11
3.4. MEASUREMENT UNCERTAINTY.....	13
4. EUT TUNE-UP PROCEDURE.....	13
5. EVALUATION PROCEDURE	14
5.1. SYSTEM VALIDATION DATA.....	15
5.2. SAR EVALUATION PROCEDURE	15
5.3. EXPOSURE LIMIT	16
6. MEASUREMENT RESULTS	17
7. EUT PHOTOS.....	19
8. EQUIPMENTS LIST & CALIBRATION INFORMATION	20
9. REFERENCES.....	21
10. ATTACHMANTS	22

1. EUT DESCRIPTION

APPLICANT:	SAMSUNG ELECTRONICS CO., LTD. #416, MAETAN-3DONG, PALDAL-GU SUWON CITY, GYEONGGI-DO 442-742, KOREA
TRADE NAME:	SAMSUNG
MODEL:	S160
FCC ID:	A3LS160
DEVICE CATEGORY:	PORTABLE DEVICES
EXPOSURE CATEGORY:	GENERAL POPULATION/UNCONTROLLED EXPOSURE

Test Sample is a:	Production unit
Operating Mode:	Maximum continuous output
Tx Frequency:	2412 ~ 2462 MHz
Max. RF Output Power (Conducted):	18.21 dBm (2412MHz)
Max. SAR (1g):	0.526 mW/g (2462 MHz)
Application Type:	Certification
FCC Rule Part(s):	§15.247
Antenna Dimensions:	Length (mm): 10 x 5.9 x 3.4 (L x W x H)
Battery option:	Only one model with EUT



- ¹ Specific Absorption Rate (SAR) is a measure of the rate of energy absorption due to exposure to an RF transmitting source (wireless portable device).
- ² IEEE/ANSI Std. C95.1-1992 limits are used to determine compliance with FCC ET Docket 93-62.

2. REQUIREMENTS FOR COMPLIANCE TESTING DEFINED BY THE FCC

The US Federal Communications Commission has released the report and order "Guidelines for Evaluating the Environmental Effects of RF Radiation", ET Docket No. 93-62 in August 1996. The order requires routine SAR evaluation prior to equipment authorization of portable transmitter devices, including portable telephones. For consumer products, the applicable limit is 1.6 mW/g for an uncontrolled environment and 8.0 mW/g for an occupational/controlled environment as recommended by the ANSI/IEEE standard C95.1-1992. According to the Supplement C of OET Bulletin 65 "Evaluating Compliance with FCC Guide-lines for Human Exposure to Radio frequency Electromagnetic Fields", released on Jun 29, 2001 by the FCC, the device should be evaluated at maximum output power (radiated from the antenna) under "worst-case" conditions for normal or intended use, incorporating normal antenna operating positions, device peak performance frequencies and positions for maximum RF energy coupling.

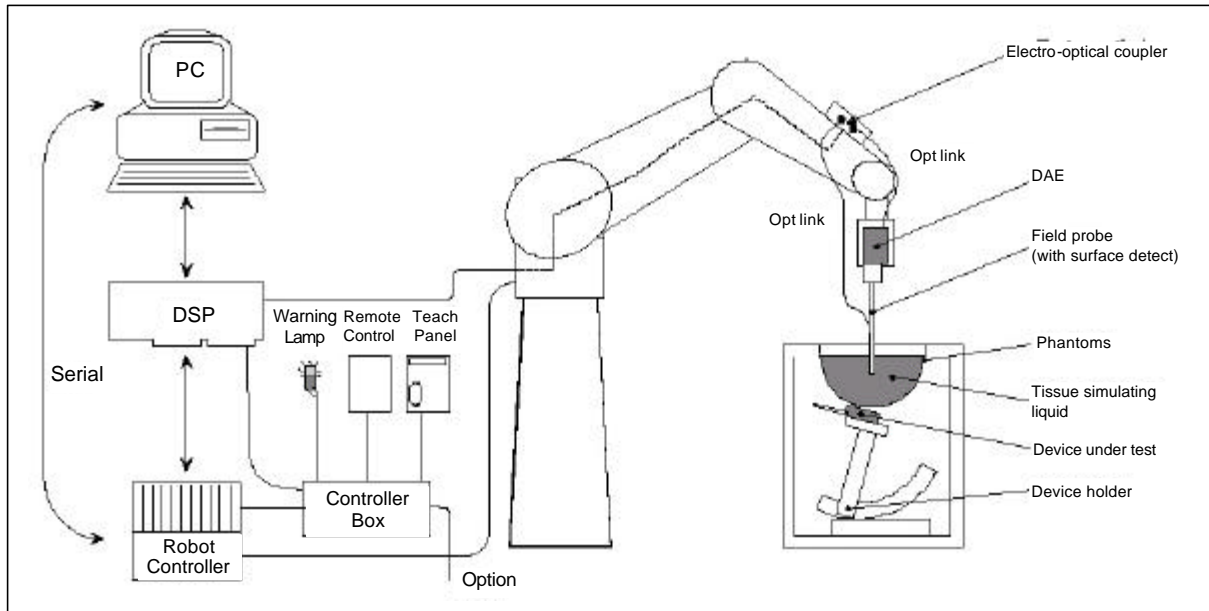
3. DOSIMETRIC ASSESSMENT SETUP

These measurements were performed with the automated near-field scanning system DASY3 from Schmid & Partner Engineering AG (SPEAG). The system is based on a high precision robot (working range greater than 0.9 m), which positions the probes with a positional repeatability of better than ± 0.02 mm. Special E- and H-field probes have been developed for measurements close to material discontinuity, the sensors of which are directly loaded with a Schottky diode and connected via highly resistive lines to the data acquisition unit. The SAR measurements were conducted with the dosimetric probe ET3DV6, SN: 1577 (manufactured by SPEAG), designed in the classical triangular configuration and optimized for dosimetric evaluation. The probe has been calibrated according to the procedure described in [7] with accuracy of better than $\pm 10\%$. The spherical isotropy was evaluated with the procedure described in [8] and found to be better than ± 0.25 dB. The phantom used was the SAM Twin Phantom as described in FCC supplement C, IEE P1528 and CENELEC EN50361.

The Tissue simulation liquid used for each test is in according with the FCC OET65 supplement C as listed below.

Ingredients (% by weight)	Frequency (MHz)									
	450		835		915		1900		2450	
Tissue Type	Head	Body	Head	Body	Head	Body	Head	Body	Head	Body
Water	38.56	51.16	41.45	52.4	41.05	56.0	54.9	40.4	62.7	73.2
Salt (NaCl)	3.95	1.49	1.45	1.4	1.35	0.76	0.18	0.5	0.5	0.04
Sugar	56.32	46.78	56.0	45.0	56.5	41.76	0.0	58.0	0.0	0.0
HEC	0.98	0.52	1.0	1.0	1.0	1.21	0.0	1.0	0.0	0.0
Bactericide	0.19	0.05	0.1	0.1	0.1	0.27	0.0	0.1	0.0	0.0
Triton X-100	0.0	0.0	0.0	0.0	0.0	0.0	0.0	0.0	36.8	0.0
DGBE	0.0	0.0	0.0	0.0	0.0	0.0	44.92	0.0	0.0	26.7
Dielectric Constant	43.42	58.0	42.54	56.1	42.0	56.8	39.9	54.0	39.8	52.5
Conductivity (S/m)	0.85	0.83	0.91	0.95	1.0	1.07	1.42	1.45	1.88	1.78

3.1. MEASUREMENT SYSTEM DIAGRAM



The DASYS3 system for performing compliance tests consist of the following items:

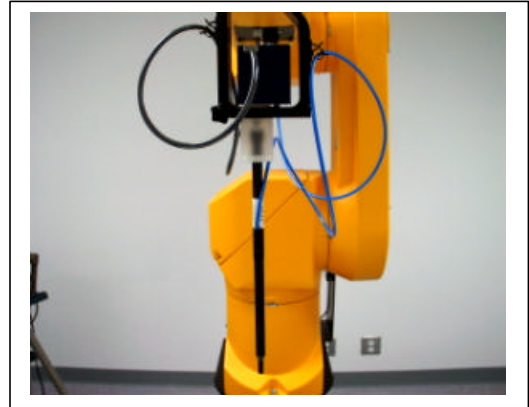
1. A standard high precision 6-axis robot (Stäubli RX family) with controller and software.
2. An arm extension for accommodating the data acquisition electronics (DAE).
3. A dosimetric probe, i.e., an isotropic E-field probe optimized and calibrated for usage in tissue simulating liquid. The probe is equipped with an optical surface detector system.
4. A data acquisition electronic (DAE), which performs the signal amplification, signal multiplexing, AD-conversion, offset measurements, mechanical surface detection, collision detection, etc. The unit is battery powered with standard or rechargeable batteries. The signal is optically transmitted to the EOC.
5. A unit to operate the optical surface detector, which is connected to the EOC.
6. The Electro-optical coupler (EOC) performs the conversion from the optical into a digital electric signal of the DAE. The EOC is connected to the PC plug-in card.
7. The functions of the PC plug-in card based on a DSP is to perform the time critical task such as signal filtering, surveillance of the robot operation fast movement interrupts.
8. A computer operating Windows 95 or larger
9. DASYS3 software
10. Remote control with teaches pendant and additional circuitry for robot safety such as warning lamps, etc.
11. The SAM phantom enabling testing left-hand and right-hand usage.
12. The device holder for handheld EUT.
13. Tissue simulating liquid mixed according to the given recipes (see Application Note).
14. System validation dipoles to validate the proper functioning of the system.

3.2. SYSTEM COMPONENTS

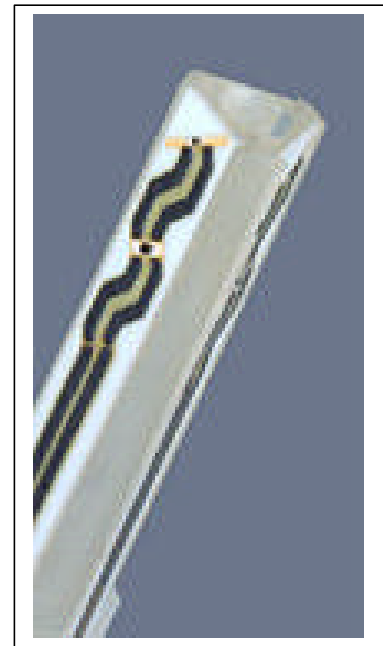
ET3DV5 Probe Specification

Construction Symmetrical design with triangular core
Built-in optical fiber for surface detection System
Built-in shielding against static charges
Calibration In air from 10 MHz to 2.5 GHz
In brain and muscle simulating tissue at
Frequencies of 450 MHz, 900 MHz and
1.8 GHz (accuracy $\pm 8\%$)
Frequency 10 MHz to > 6 GHz; Linearity: ± 0.2 dB
(30 MHz to 3 GHz)
Directivity ± 0.2 dB in brain tissue (rotation around probe axis)
 ± 0.4 dB in brain tissue (rotation normal probe axis)
Dynamic 5 mW/g to > 100 mW/g;
Range Linearity: ± 0.2 dB
Surface ± 0.2 mm repeatability in air and clear liquids
Detection over diffuse reflecting surfaces.
Dimensions Overall length: 330 mm
Tip length: 16 mm
Body diameter: 12 mm
Tip diameter: 6.8 mm
Distance from probe tip to dipole centers: 2.7 mm
Application General dosimetric up to 3 GHz
Compliance tests of mobile phones
Fast automatic scanning in arbitrary phantoms

The SAR measurements were conducted with the dosimetric probe ET3DV6 designed in the classical triangular configuration and optimized for dosimetric evaluation. The probe is constructed using the thick film technique; with printed resistive lines on ceramic substrates. The probe is equipped with an optical multi-fiber line ending at the front of the probe tip. It is connected to the EOC box on the robot arm and provides an automatic detection of the phantom surface. Half of the fibers are connected to a pulsed infrared transmitter, the other half to a synchronized receiver. As the probe approaches the surface, the reflection from the surface produces a coupling from the transmitting to the receiving fibers. This reflection increases first during the approach, reaches maximum and then decreases. If the probe is flatly touching the surface, the coupling is zero. The distance of the coupling maximum to the surface is independent of the surface reflectivity and largely independent of the surface to probe angle. The DASY3 software reads the reflection during a software approach and looks for the maximum using a 2nd order fitting. The approach is stopped when reaching the maximum.



Photograph of the probe



Inside view of
ET3DV6 E-field Probe

E-Field Probe Calibration Process

Each probe is calibrated according to a dosimetric assessment procedure described in [6] with accuracy better than +/- 10%. The spherical isotropy was evaluated with the procedure described in [7] and found to be better than +/-0.25dB. The sensitivity parameters (NormX, NormY, NormZ), the diode compression parameter (DCP) and the conversion factor (ConvF) of the probe are tested.

The free space E-field from amplified probe outputs is determined in a test chamber. This is performed in a TEM cell for frequencies below 1 GHz, and in a waveguide above 1 GHz for free space. For the free space calibration, the probe is placed in the volumetric center of the cavity and at the proper orientation with the field. The probe is then rotated 360 degrees.

E-field temperature correlation calibration is performed in a flat phantom filled with the appropriate simulated brain tissue. The measured free space E-field in the medium correlates to temperature rise in dielectric medium. For temperature correlation calibration a RF transparent thermistor-based temperature probe is used in conjunction with the E-field probe.

Data Evaluation

The DASY3 software automatically executes the following procedures to calculate the field units from the microvolt readings at the probe connector. The parameters used in the evaluation are stored in the configuration modules of the software:

Probe parameters:	- Sensitivity	Norm _i , a _{i10} , a _{i11} , a _{i12}
	- Conversion factor	ConvF _i
	- Diode compression point	Dcp _i
Device parameters:	- Frequency	f
	- Crest factor	cf
Media parameters:	- Conductivity	σ
	- Density	ρ

These parameters must be set correctly in the software. They can either be found in the component documents or be imported into the software from the configuration files issued for the DASY3 components. In the direct measuring mode of the multi-meter option, the parameters of the actual system setup are used. In the scan visualization and export modes, the parameters stored in the corresponding document files are used.

The first step of the evaluation is a linearization of the filtered input signal to account for the compression characteristics of the detector diode. The compensation depends on the input signal, the diode type and the DC-transmission factor from the diode to the evaluation electronics. If the exciting field is pulsed, the crest factor of the signal must be known to correctly compensate for peak power. The formula for each channel can be given as:

$$V_i = U_i + U_i^2 \cdot \frac{cf}{dcp_i}$$

with	V _i	= Compensated signal of channel i	(i = x, y, z)
	U _i	= Input signal of channel i	(i = x, y, z)
	cf	= Crest factor of exciting field	(DASY parameter)
	dcp _i	= Diode compression point	(DASY parameter)

From the compensated input signals the primary field data for each channel can be evaluated:

E-field probes:
$$E_i = \sqrt{\frac{V_i}{Norm_i \cdot ConvF}}$$

H-field probes:
$$H_i = \sqrt{V_i} \cdot \frac{a_{i10} + a_{i11}f + a_{i12}f^2}{f}$$

with V_i = Compensated signal of channel i (i = x, y, z)

$Norm_i$ = Sensor sensitivity of channel i (i = x, y, z)

$\mu V/(V/m)^2$ for E0field Probes

$ConvF$ = Sensitivity enhancement in solution

a_{ij} = Sensor sensitivity factors for H-field probes

f = Carrier frequency (GHz)

E_i = Electric field strength of channel i in V/m

H_i = Magnetic field strength of channel i in A/m

The RSS value of the field components gives the total field strength (Hermitian magnitude):

$$E_{tot} = \sqrt{E_x^2 + E_y^2 + E_z^2}$$

The primary field data are used to calculate the derived field units.

$$SAR = E_{tot}^2 \cdot \frac{\sigma}{\rho \cdot 1000}$$

with SAR = local specific absorption rate in mW/g

E_{tot} = total field strength in V/m

σ = conductivity in [mho/m] or [siemens/m]

ρ = equivalent tissue density in g/cm³

Note that the density is normally set to 1 (or 1.06), to account for actual brain density rather than the density of the simulation liquid.

The power flow density is calculated assuming the excitation field as a free space field.

$$P_{pwe} = \frac{E_{tot}^2}{3770} \quad \text{OR} \quad P_{pwe} = H_{tot}^2 \cdot 37.7$$

with P_{pwe} = Equivalent power density of a plane wave in mW/cm²

E_{tot} = total electric field strength in V/m

H_{tot} = total magnetic field strength in A/m

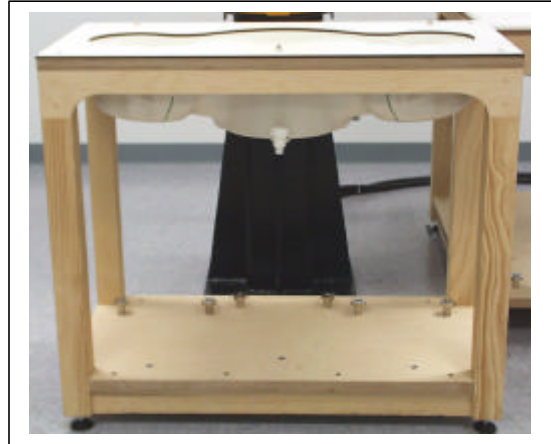
SAM Phantom

The SAM Phantom V4.0 is constructed of a fiberglass shell integrated in a wooden table. The shape of the shell is in compliance with the specification set in IEE P1528 and CENELEC EN50361. The phantom enables the dosimetric evaluation of left and right hand phone usage as well as body mounted usage at the flat phantom region. A cover prevents the evaporation of the liquid. Reference markings on the Phantom allows the complete setup of all predefined phantom positions and measurement grids by manually teaching three points in the robot.

Shell Thickness: 2 ± 0.2 mm

Filling Volume: Approx. 25 liters

Dimensions (H x L x W): 810 x 1000 x 500 mm

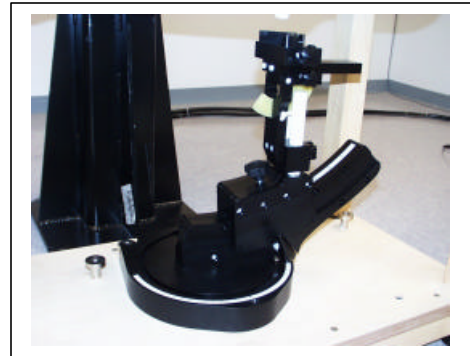


SAM Phantom

Device Holder for Transmitters

In combination with the SAM Twin Phantom V4.0, the Mounting Device enables the rotation of the mounted transmitter in spherical coordinates whereby the rotation points is the ear opening. The devices can be easily, accurately, and repeatedly positioned according to the FCC and CENELEC specifications. The device holder can be locked at different phantom locations (left head, right head, flat phantom).

* Note: A simulating human hand is not used due to the complex anatomical and geometrical structure of the hand that may produced infinite number of configurations [10]. To produce the worst-case condition (the hand absorbs antenna output power), the hand is omitted during the tests.



Device Holder

3.3. EUT SET-UP PHOTOS

Body - EUT Set up Configuration 1 (Direct touched phantom)

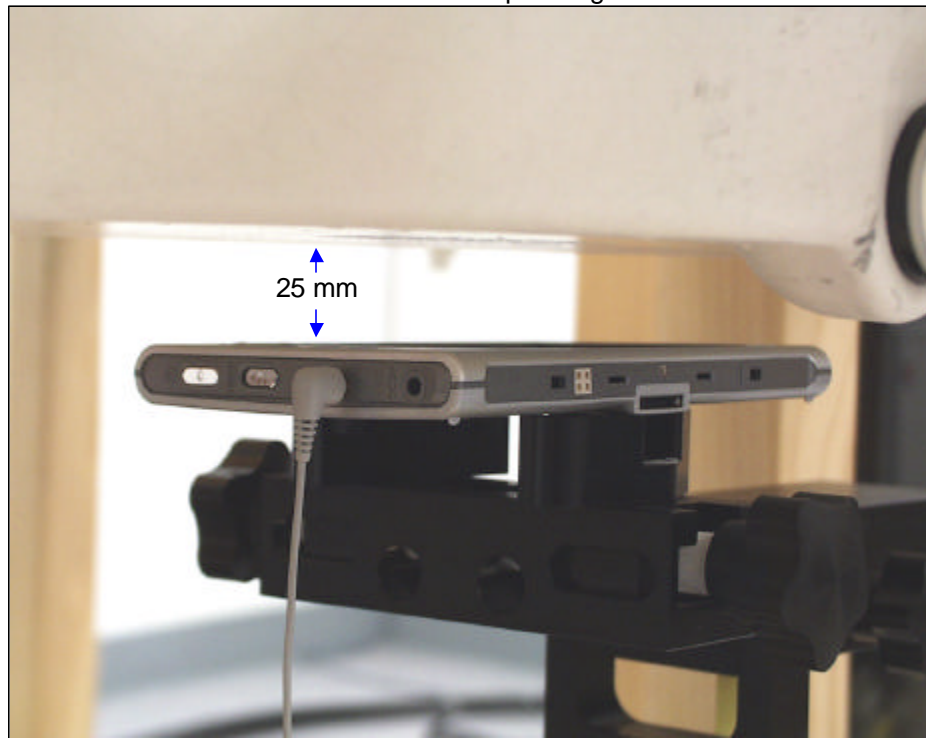


Body - EUT Set up Configuration 2 (Direct touched phantom)



SET-UP PHOTOS (Continue)

Face held - EUT Set up Configuration 3



3.4. MEASUREMENT UNCERTAINTY

The uncertainty budget has been determined for the DASY3 measurement system according to the NIS81 [13] and the NIST1297 [14] documents and is given in the following Table.

Uncertainty Description	Error	Distrib.	Weight	Std. Dev.	Offset
Probe Uncertainty					
Axial isotropy	± 0.2 dB	U-shape	0.5	±2.4 %	
Spherical isotropy	±0.4 dB	U-shape	0.5	±4.8 %	
Isotropy from gradient	±0.5 dB	U-shape	0		
Spatial resolution	±0.5 %	Normal	1	±0.5 %	
Linearity error	±0.2 dB	Rectangle	1	±2.7 %	
Calibration error	±3.3 %	Normal	1	± 3.3 %	
SAR Evaluation Uncertainty					
Data acquisition error	±1%	Rectangle	1	±0.6 %	
ELF and RF disturbances	±0.25 %	Normal	1	±0.25 %	
Conductivity assessment	±10 %	Rectangle	1	± 5.8 %	
Spatial Peak SAR Evaluation Uncertainty					
Extrapol boundary effect	±3%	Normal	1	±3%	± 5%
Probe positioning error	±0.1 mm	Normal	1	± 1%	
Integrat. and cube orient	±3%	Normal	1	±3%	
Cube shape inaccuracies	±2%	Rectangle	1	±1.2 %	
Device positioning	±6%	Normal	1	± 6%	
Combined Uncertainties			1	±11.7 %	± 5%
Expanded uncertainty (K = 2)				± 23.5 %.	

4. EUT TUNE-UP PROCEDURE

The following procedures had been used to prepare the EUT for the SAR test.

- A special device-driving program was supply by the client to program the EUT to transmit the data and also to change the channels frequency.
- Maximum average conducted power was measured by replacing the antenna with an adapter for conductive measurements, before and after the SAR measurements was done.

– Evaluation Procedure

Simulated Tissue Liquid Parameter confirmation

The dielectric parameters were checked prior to assessment using the HP85070A dielectric probe kit. The dielectric parameters measured are reported in each correspondent section.

IEEE SCC-34/SC-2 P1528 recommended Tissue Dielectric Parameters

The head tissue dielectric parameters recommended by the IEEE SCC-34/SC-2 in P1528 have been incorporated in the following table. These head parameters are derived from planar layer models simulating the highest expected SAR for the dielectric properties and tissue thickness variations in a human head. Other head and body tissue parameters that have not been specified in P1528 are derived from the tissue dielectric parameters computed from the 4-Cole-Cole equations and extrapolated according to the head parameters specified in P1528.

Target Frequency [MHz]	Head		Body	
	ϵ_r	σ (S/m)	ϵ_r	σ (S/m)
150	52.3	0.76	61.9	0.80
300	45.3	0.87	58.2	0.92
450	43.5	0.87	56.7	0.94
835	41.5	0.90	55.2	0.97
900	41.5	0.97	55.0	1.05
915	41.5	0.98	55.0	1.06
1450	40.5	1.20	54.0	1.30
1610	40.3	1.29	53.8	1.40
1800-2000	40.0	1.40	53.3	1.52
2450	39.2	1.80	52.7	1.95
3000	38.5	2.40	52.0	2.73
5800	45.3	5.27	48.2	6.00

(ϵ_r = relative permittivity, σ = conductivity and $\rho = 1000 \text{ kg/m}^3$)

System Accuracy Verification

Prior to the assessment, the system validation kit was used to test whether the system was operating within its specifications of $\pm 10\%$. The validation results are tabulated below. And also the corresponding SAR plot is attached as well in the SAR plots files.

IEEE P1528 Recommended Reference Value

Frequency (MHz)	1 g SAR	10 g SAR	Local SAR at surface (Above feed point)	Local SAR at surface (y=2cm offset from feed point)
300	3.0	2.0	4.4	2.1
450	4.9	3.3	7.2	3.2
835	9.5	6.2	14.1	4.9
900	10.8	6.9	16.4	5.4
1450	29.0	16.0	50.2	6.5
1800	38.1	19.8	69.5	6.8
1900	39.7	20.5	72.1	6.6
2000	41.1	21.1	74.6	6.5
2450	52.4	24.0	104.2	7.7
3000	63.8	25.7	140.2	9.5

4.1. SYSTEM VALIDATION DATA

Measured Date: July 1, 2002

Ambient conditions - Ambient temperature: <u>22.5°C</u> ; Relative humidity: <u>61%</u>						
System Validation Dipole: <u>D2450V2 SN: 706</u>				Depth of liquid: <u>15.1 cm</u>		
Type of Liquid	Liquid Temp [°C]	Parameters	Target Value	Measured Value	Deviation [%]	Limit [%]
Head 2450 MHz	20.8	ϵ_r	39.2	38.31	-2.27	± 5
		σ	1.80	1.886	+4.78	± 5
		1 g SAR	52.4	57.6	+9.92	± 10

4.2. SAR EVALUATION PROCEDURE

The evaluation was performed with the following procedure:

Step 1: Measurement of the SAR value at a fixed location above the ear point or central position was used as a reference value for assessing the power drop.

Step 2: The SAR distribution at the exposed side of the head was measured at a distance of 3.9 mm from the inner surface of the shell. The area covered the entire dimension of the head or EUT and the horizontal grid spacing was 20 mm x 20 mm. Based on these data, the area of the maximum absorption was determined by spline interpolation.

Step 3: Around this point, a volume of 32 mm x 32 mm x 34 mm was assessed by measuring 5 x 5 x 7 points. On the basis of this data set, the spatial peak SAR value was evaluated under the following procedure:

1. The data at the surface were extrapolated, since the center of the dipoles is 2.7 mm away from the tip of the probe and the distance between the surface and the lowest measuring point is 1.2 mm. The extrapolation was based on a least square algorithm [11]. A polynomial of the fourth order was calculated through the points in z-axes. This polynomial was then used to evaluate the points between the surface and the probe tip.
2. The maximum interpolated value was searched with a straightforward algorithm. Around this maximum the SAR values averaged over the spatial volumes (1 g or 10 g) were computed by the 3D-Spline interpolation algorithm. The 3D-Spline is composed of three one-dimensional splines with the "Not a knot"-condition (in x, y and z-directions) [11], [12]. The volume was integrated with the trapezoidal-algorithm. One thousand points (10 x 10 x 10) were interpolated to calculate the average.
3. All neighboring volumes were evaluated until no neighboring volume with a higher average value was found.

Step 4: Re-measurement of the SAR value at the same location as in Step 1. If the value changed by more than 5%, the evaluation was repeated.

4.3. EXPOSURE LIMIT

(A) Limits for Occupational/Controlled Exposure (W/kg)

Whole-Body	Partial-Body	Hands, Wrists, Feet and Ankles
0.4	8.0	20.0

(B) Limits for General Population/Uncontrolled Exposure (W/kg)

Whole-Body	Partial-Body	Hands, Wrists, Feet and Ankles
0.08	1.6	4.0

NOTES: **Whole-Body SAR** is averaged over the entire body, **partial-body SAR** is averaged over any 1 gram of tissue defined as a tissue volume in the shape of a cube. **SAR for hands, wrists, feet and ankles** is averaged over any 10 grams of tissue defined as a tissue volume in the shape of a cube.

Population/Uncontrolled Environments: are defined as locations where there is the exposure of individuals who have no knowledge or control of their exposure.

Occupational/Controlled Environments: are defined as locations where there is exposure that may be incurred by people who are aware of the potential for exposure, (i.e. as a result of employment or occupation).

<p>NOTE GENERAL POPULATION/UNCONTROLLED EXPOSURE PARTIAL BODY LIMIT 1.6 mW/g</p>

5. MEASUREMENT RESULTS

Liquid		Temp. [°C]	Parameters	Target Value	Measured	Deviation [%]	Limit [%]
Muscle 2450 MHz		21.0	ϵ_r	52.7	50.64	-3.91	±5
			σ	1.95	2.04	+4.61	±5

LIQUID VERIFY Measured date: July 1, 2002
Ambient conditions - Ambient temperature: 22.5°C; Relative Humidity: 61 %

SAR MEASUREMENT
Model: S160; Duty cycle: 50%; Crest factor: 2
Phantom Section: Flat (Body) – See Configuration 1 Depth of liquid: 15.1 cm

Frequency		EUT Set-up conditions		Conducted power [dBm]		Liquid Temp [°C]	SAR (W/kg)	Limit (W/kg)
Channel	MHz	Antenna	Sep. [mm]	Before	After			
L (1)	2412	Fixed	0	18.21	18.17	20.7	0.507	1.6
M (6)	2437	Fixed	0	18.08	15.05	20.8	0.501	1.6
H (11)	2462	Fixed	0	17.95	17.92	20.5	0.526	1.6

Phantom Section: Flat (Body) – See Configuration 2

Frequency		EUT Set-up conditions		Conducted power [dBm]		Liquid Temp [°C]	SAR (W/kg)	Limit (W/kg)
Channel	MHz	Antenna	Sep. [mm]	Before	After			
L (1)	2412	Fixed	0	18.21	18.17	20.7	0.332	1.6
M (6)	2437	Fixed	0	18.08	15.05	20.5	0.306	1.6
H (11)	2462	Fixed	0	17.95	17.92	20.5	0.325	1.6

Note (s): Please refer to Attachment for highest SAR the result presentation in plot format.

MEASUREMENT RESULTS (CONTINUE)

Liquid		Temp. [°C]	Parameters	Target Value	Measured	Deviation [%]	Limit [%]
Head		21.3	ϵ_r	39.2	38.31	-2.27	±5
2450 MHz			σ	1.80	1.886	+4.78	±5

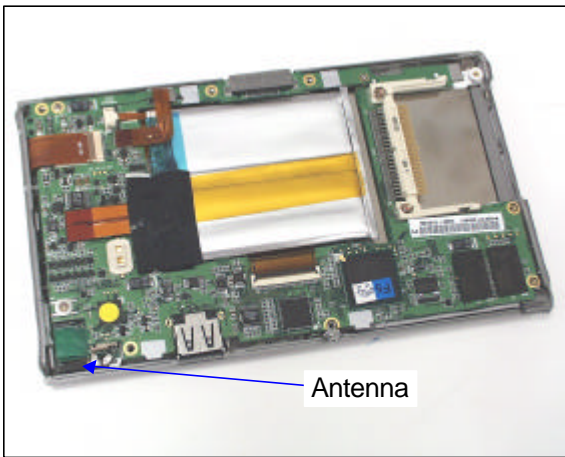
LIQUID VERIFY Measured date: July 1, 2002
Ambient conditions - Ambient temperature: 22.5°C; Relative Humidity: 61 %

SAR MEASUREMENT
 Model: S160; Duty cycle: 50%; Crest factor: 2
 Phantom Section: Face held – See Configuration 3 Depth of liquid: 15.1 cm

Frequency		EUT Set-up conditions		Conducted power [dBm]		Liquid Temp [°C]	SAR (W/kg)	Limit (W/kg)
Channel	MHz	Antenna	Sep. [mm]	Before	After			
L (1)	2412	Fixed	25	18.21	18.17	21.0	0.0140	1.6
M (6)	2437	Fixed	25	18.08	15.05	21.2	0.0161	1.6
H (11)	2462	Fixed	25	17.95	17.92	21.1	0.0193	1.6

Note (s): Please refer to Attachment for highest SAR the result presentation in plot format.

6. EUT PHOTOS



7. EQUIPMENTS LIST & CALIBRATION INFORMATION

Name of Equipment	Manufacturer	Type/Mode	Serial Number	Calibration	
				last cal.	due date
S-Parameter Network Analyzer	Agilent	8753ES	MY40001647	6/5/02	6/5/03
Electronic Probe kit	Hewlett Packard	85070A	N/A	N/A	N/A
3.5 mm Calibration Kit	Agilent	85033D	3423A07200	6/5/02	6/5/03
Power Meter	Rohde & Schwarz	NRVD	842093/017	1/21/02	1/21/03
Power Sensor	Rohde & Schwarz	NRV-Z51	841275/013	1/21/02	1/21/03
Universal Radio Communication Tester	Rohde & Schwarz	CMU 200	838114/032	11/20/01	11/20/02
Amplifier	Mini-Circuit	ZHL-42W	D072701-5	N/A	N/A
DC Power generator	Kenwood	PA36-3A	7060074	N/A	N/A
Data Acquisition Electronics (DAE)	SPEAG	DAE3 V1	500	2/26/02	2/26/03
Dosimetric E-Field Probe	SPEAG	ET3DV6	1578	2/22/01	2/22/03
450 MHz System Validation Dipole	SPEAG	D450V2	1003	4/5/02	4/19/04
900 MHz System Validation Dipole	SPEAG	D900V2	108	4/17/01	4/17/03
1800 MHz System Validation Dipole	SPEAG	D1800V2	294	4/19/01	4/19/03
2450 MHz System Validation Dipole	SPEAG	D2450V2	706	6/4/02	6/4/04
Probe Alignment Unit	SPEAG	LB (V2)	261	N/A	N/A
Robot	Staubli	RX90B L	F00/5H31A1/A/01	N/A	N/A
Generic Twin Phantom	SPEAG	N/A	N/A	N/A	N/A
SAM Phantom	SPEAG	N/A	N/A	N/A	N/A
Devices Holder	SPEAG	N/A	N/A	N/A	N/A
Head 450 MHz	CCS	H450A	N/A	Daily	N/A
Muscle 450 MHz	CCS	M450A	N/A	Daily	N/A
Head 835 MHz	CCS	H835A	N/A	Daily	N/A
Muscle 835 MHz	CCS	M835A	N/A	Daily	N/A
Head 900 MHz	CCS	H900A	N/A	Daily	N/A
Muscle 900 MHz	CCS	M900A	N/A	Daily	N/A
Head 1800 MHz	CCS	H1800A	N/A	Daily	N/A
Muscle 1800 MHz	CCS	M1800A	N/A	Daily	N/A
Head 1900 MHz	CCS	H1900A	N/A	Daily	N/A
Muscle 1900 MHz	CCS	M1900A	N/A	Daily	N/A
Head 2450 MHz	CCS	H2450A	N/A	Daily	N/A
Muscle 2450 MHz	CCS	M2450A	N/A	Daily	N/A

8. REFERENCES

- [1] Federal Communications Commission, "Report and order: Guidelines for evaluating the environmental effects of radiofrequency radiation", Tech. Rep. FCC 96-326, FCC, Washington, D.C. 20554, 1996.
- [2] David L. Means Kwok Chan, Robert F. Cleveland, "Evaluating compliance with FCC guidelines for human exposure to radiofrequency electromagnetic fields", Tech. Rep., Federal Communication Commission, Office of Engineering & Technology, Washington, DC, 1997.
- [3] Thomas Schmid, Oliver Egger, and Niels Kuster, "Automated E-field scanning system for dosimetric assessments", IEEE Transactions on Microwave Theory and Techniques, vol. 44, pp. 105-113, Jan. 1996.
- [4] Niels Kuster, Ralph Kastle, and Thomas Schmid, "Dosimetric evaluation of mobile communications equipment with known precision", IEEE Transactions on Communications, vol. E80-B, no. 5, pp. 645-652, May 1997.
- [5] CENELEC, "Considerations for evaluating of human exposure to electromagnetic fields (EMFs) from mobile telecommunication equipment (MTE) in the frequency range 30MHz - 6GHz", Tech. Rep., CENELEC, European Committee for Electrotechnical Standardization, Brussels, 1997.
- [6] ANSI, ANSI/IEEE C95.1-1992: IEEE Standard for Safety Levels with Respect to Human Exposure to Radio Frequency Electromagnetic Fields, 3 kHz to 300 GHz, The Institute of Electrical and Electronics Engineers, Inc., New York, NY 10017, 1992.
- [7] Katja Pokovic, Thomas Schmid, and Niels Kuster, "Robust setup for precise calibration of E-field probes in tissue simulating liquids at mobile communications frequencies", in ICECOM '97, Dubrovnik, October 15-17, 1997, pp. 120-124.
- [8] Katja Pokovic, Thomas Schmid, and Niels Kuster, "E-field probe with improved isotropy in brain simulating liquids", in Proceedings of the ELMAR, Zadar, Croatia, 23-25 June, 1996, pp. 172-175.
- [9] Volker Hombach, Klaus Meier, Michael Burkhardt, Eberhard Kuhn, and Niels Kuster, "The dependence of EM energy absorption upon human head modeling at 900 MHz", IEEE Transactions on Microwave Theory and Techniques, vol. 44, no. 10, pp. 1865-1873, Oct. 1996.
- [10] Klaus Meier, Ralf Kastle, Volker Hombach, Roger Tay, and Niels Kuster, "The dependence of EM energy absorption upon human head modeling at 1800 MHz", IEEE Transactions on Microwave Theory and Techniques, Oct. 1997, in press.
- [11] W. Gander, Computermathematik, Birkhaeuser, Basel, 1992.
- [12] W. H. Press, S. A. Teukolsky, W. T. Vetterling, and B. P. Flannery, Numerical Recipes in C, The Art of Scientific Computing, Second Edition, Cambridge University Press, 1992. Dosimetric Evaluation of Sample device, month 1998 9
- [13] NIS81 NAMAS, "The treatment of uncertainty in EMC measurement", Tech. Rep., NAMAS Executive, National Physical Laboratory, Teddington, Middlesex, England, 1994.
- [14] Barry N. Taylor and Christ E. Kuyatt, "Guidelines for evaluating and expressing the uncertainty of NIST measurement results", Tech. Rep., National Institute of Standards and Technology, 1994. Dosimetric Evaluation of Sample device, month 1998 10

9. ATTACHMANTS

Exhibit	Content	No. of page (s)
1	System Validation Plots	2
2	SAR Test Plots	6
3	Dosimetric E-Field Probe - ET3DV6, S/N: 1578	12
4	Validation Dipole - D2450V2 S/N: 706	7

End of Report

System Validation - D2450V2 S/N:706

(Antenna input power: 250 mW)

SAM; Flat

Probe: ET3DV6 - SN1578; ConvF(4.50,4.50,4.50); Crest factor: 1.0

Head 2450MHz: $\sigma = 1.88$ mho/m $\epsilon_r = 38.3$ $\rho = 1.00$ g/cm³

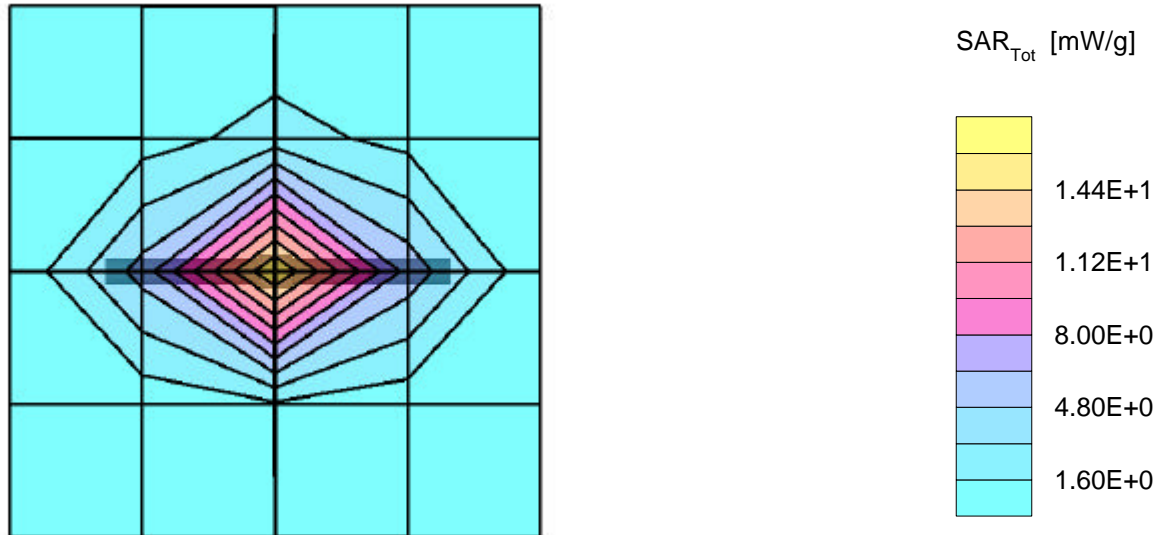
Cube 5x5x7: Peak: 30.1 mW/g, SAR (1g): 14.4 mW/g, SAR (10g): 6.56 mW/g, (Worst-case extrapolation)

Penetration depth: 6.4 (6.1, 7.0) [mm]

Powerdrift: 0.01 dB

Ambient Temperature (degree C): 22.5

Liquid Temperature (degree C): 20.8

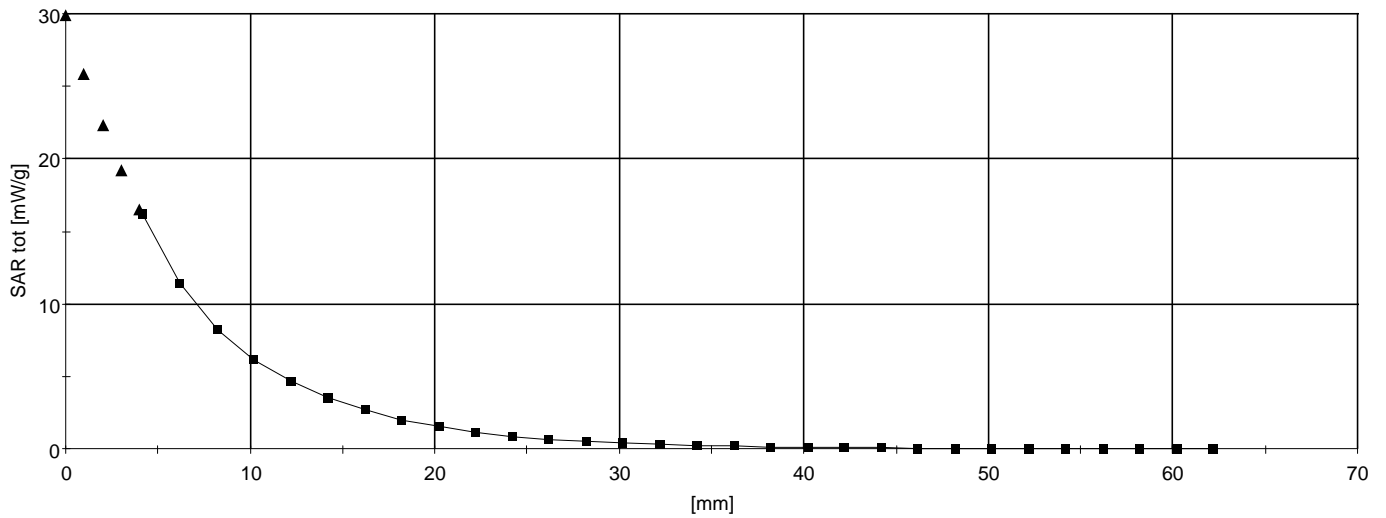


System Validation - D2450V2 S/N:706

(Antenna input power: 250 mW)

SAM;
Probe: ET3DV6 - SN1578; ConvF(4.50,4.50,4.50); Crest factor: 1.0
Head 2450MHz: $\sigma = 1.88 \text{ mho/m}$ $\epsilon_r = 38.3$ $\rho = 1.00 \text{ g/cm}^3$
: , , ()
Penetration depth: 6.4 (6.2, 7.1) [mm]

Ambient Temperature (degree C): 22.5
Liquid Temperature (degree C): 20.8



SAMSUNG_S160; Flat (body) position; Frequency: 2462MHz

Frequency: 2450 MHz; Crest factor: 2.0

Medium: Muscle 2450 MHz: $\sigma = 2.04$ mho/m $\epsilon_r = 50.6$ $\rho = 1.00$ g/cm³

SAM Phantom; Flat Section; Position: (90°,90°)

Probe: ET3DV6 - SN1578; ConvF(4.10,4.10,4.10);

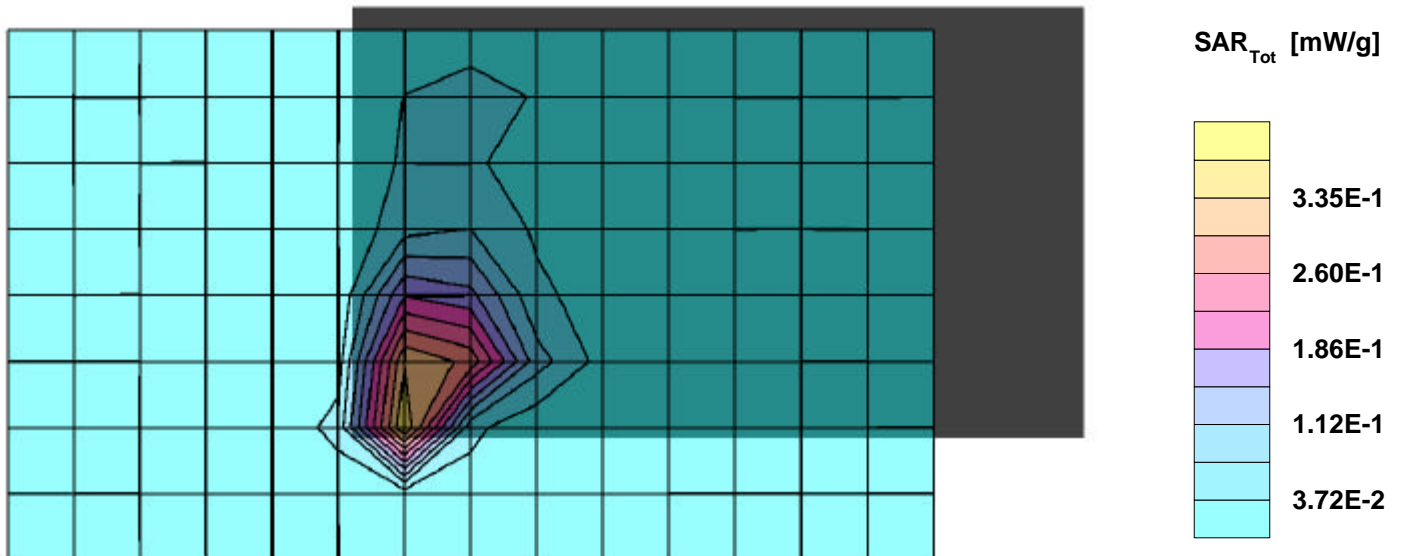
SAR:Cube 5x5x7: Peak: 1.29 mW/g, SAR (1g): 0.526 mW/g, SAR (10g): 0.192 mW/g, (Worst-case extrapolation)

Penetration depth: 5.5 (5.2, 6.1) [mm]; Powerdrift: -0.07 dB

Coarse: Dx = 14.0, Dy = 14.0, Dz = 10.0

Ambient Temperature (degree C): 22.5

Liquid Temperature (degree C): 20.5



SAMSUNG_S160; Flat (body) position; Frequency: 2462MHz

Frequency: 2450 MHz; Crest factor: 2.0

Medium: Muscle 2450 MHz: $\sigma = 2.04$ mho/m $\epsilon_r = 50.6$ $\rho = 1.00$ g/cm³

SAM Phantom; Section; Position:

Probe: ET3DV6 - SN1578; ConvF(4.10,4.10,4.10);

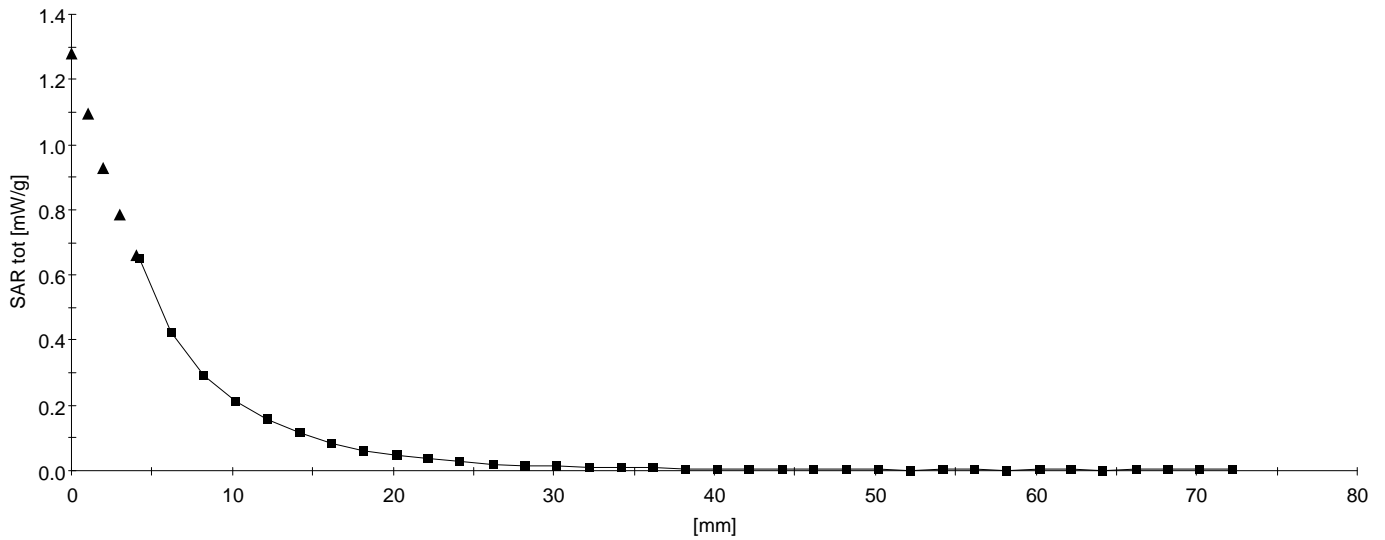
SAR:: , , ()

Penetration depth: 5.6 (5.3, 6.4) [mm];

Z-Axis: Dx = 0.0, Dy = 0.0, Dz = 2.0

Ambient Temperature (degree C): 22.5

Liquid Temperature (degree C): 20.5



SAMSUNG_S160; Flat (body) position; Frequency: 2412MHz

Frequency: 2450 MHz; Crest factor: 2.0

Medium: Muscle 2450 MHz: $\sigma = 2.04$ mho/m $\epsilon_r = 50.6$ $\rho = 1.00$ g/cm³

SAM Phantom; Flat Section; Position: (90°,90°)

Probe: ET3DV6 - SN1578; ConvF(4.10,4.10,4.10);

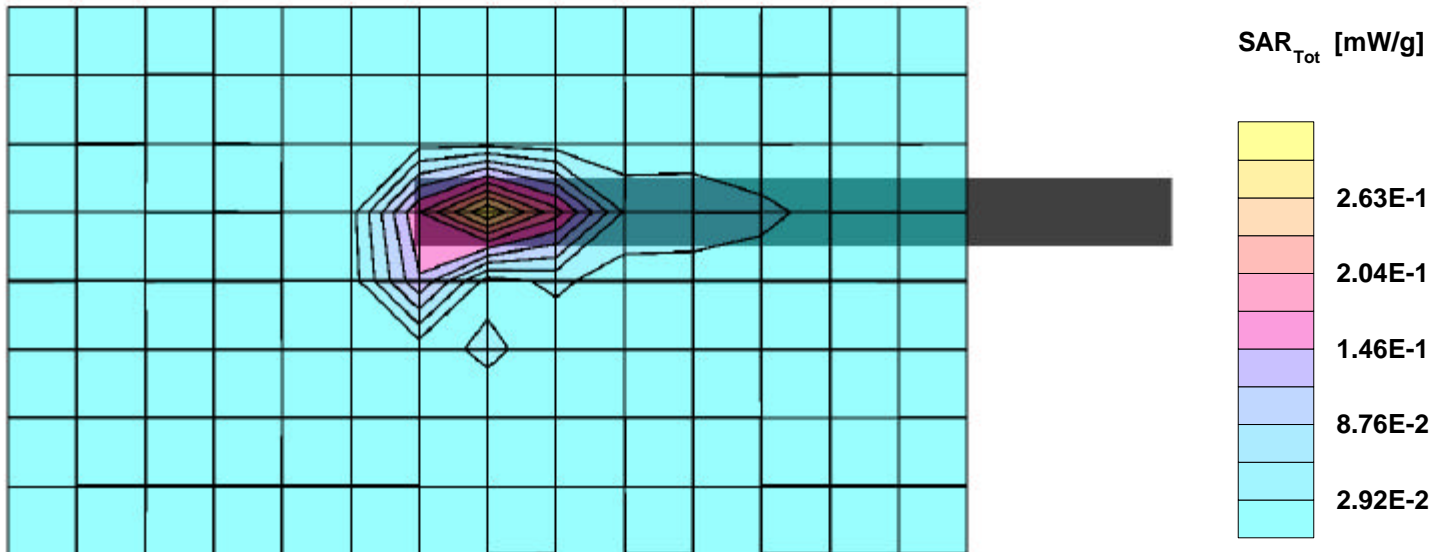
SAR:Cube 5x5x7: Peak: 0.831 mW/g, SAR (1g): 0.332 mW/g, SAR (10g): 0.135 mW/g, (Worst-case extrapolation)

Penetration depth: 6.9 (6.8, 7.1) [mm]; Powerdrift: -0.09 dB

Coarse: Dx = 14.0, Dy = 14.0, Dz = 10.0

Ambient Temperature (degree C): 22.5

Liquid Temperature (degree C): 20.7



SAMSUNG_S160; Flat (body) position; Frequency: 2412MHz

Frequency: 2450 MHz; Crest factor: 2.0

Medium: Muscle 2450 MHz: $\sigma = 2.04$ mho/m $\epsilon_r = 50.6$ $\rho = 1.00$ g/cm³

SAM Phantom; Section; Position:

Probe: ET3DV6 - SN1578; ConvF(4.10,4.10,4.10);

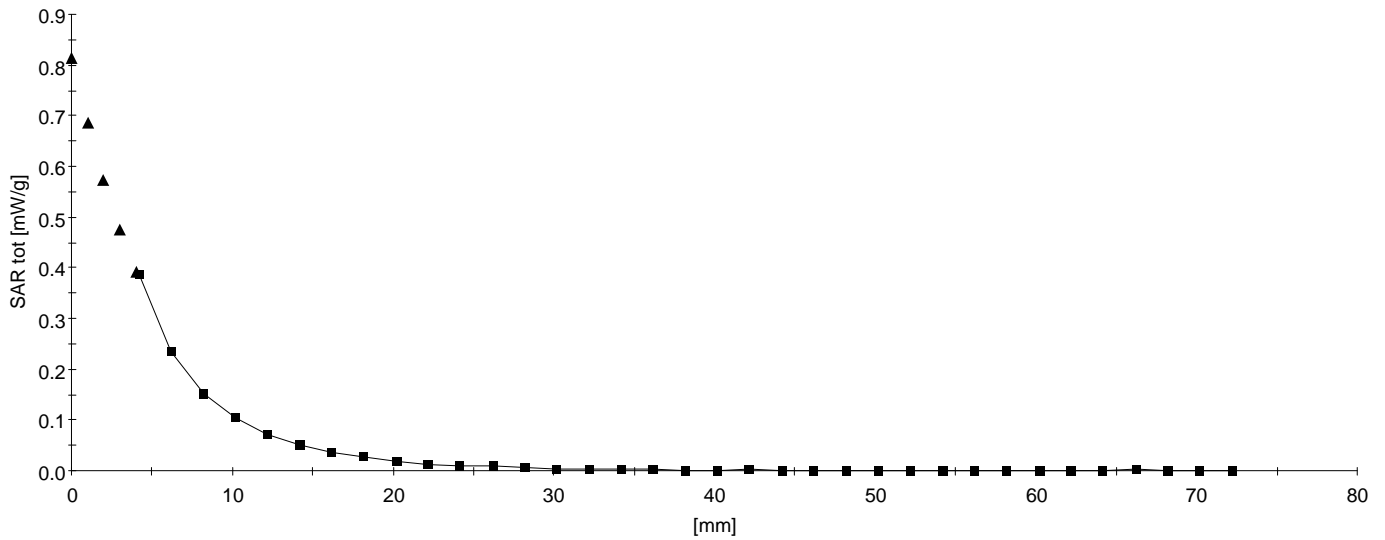
SAR:: , , ()

Penetration depth: 4.7 (4.3, 5.5) [mm];

Z-Axis: Dx = 0.0, Dy = 0.0, Dz = 2.0

Ambient Temperature (degree C): 22.5

Liquid Temperature (degree C): 20.7



SAMSUNG_S160; Flat (body) position; Frequency: 2462MHz

Frequency: 2450 MHz; Crest factor: 2.0

Medium: Head 2450MHz: $\sigma = 1.88$ mho/m $\epsilon_r = 38.3$ $\rho = 1.00$ g/cm³

SAM Phantom; Flat Section; Position: (90°,90°)

Probe: ET3DV6 - SN1578; ConvF(4.50,4.50,4.50);

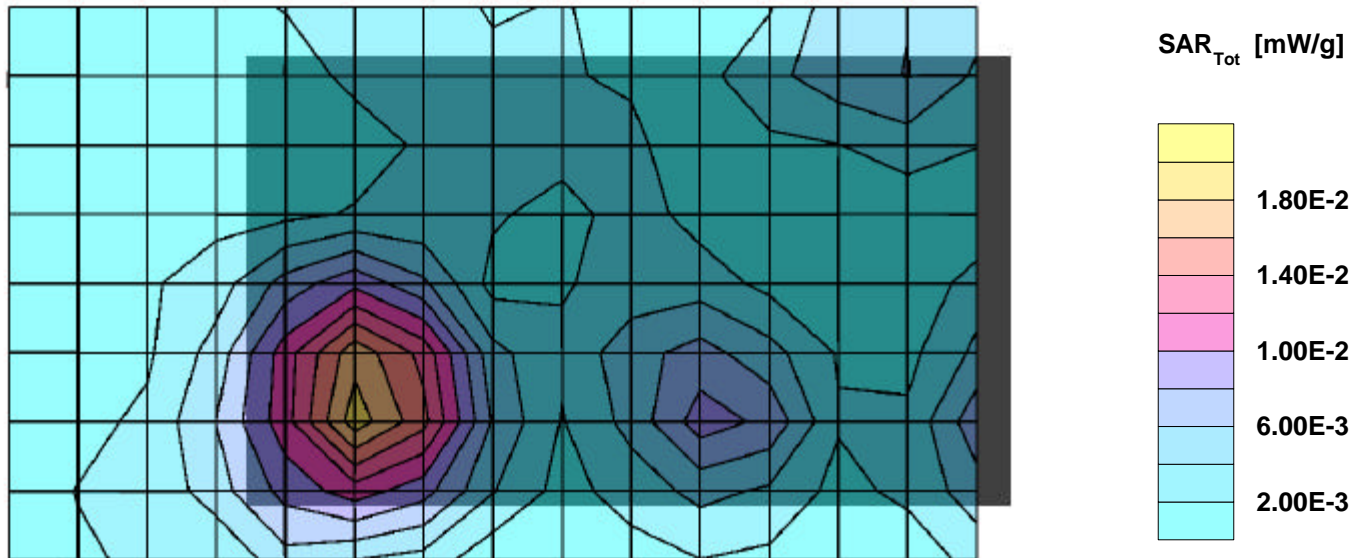
SAR:Cube 5x5x7: Peak: 0.0428 mW/g, SAR (1g): 0.0193 mW/g, SAR (10g): 0.0105 mW/g, (Worst-case extrapolation)

Penetration depth: 7.7 (5.7, 12.9) [mm]; Powerdrift: -0.08 dB

Coarse: Dx = 14.0, Dy = 14.0, Dz = 10.0

Ambient Temperature (degree C): 22.5

Liquid Temperature (degree C): 21.1



SAMSUNG_S160; Flat (body) position; Frequency: 2462MHz

Frequency: 2450 MHz; Crest factor: 2.0

Medium: Head 2450MHz: $\sigma = 1.88 \text{ mho/m}$ $\epsilon_r = 38.3$ $\rho = 1.00 \text{ g/cm}^3$

SAM Phantom; Section; Position:

Probe: ET3DV6 - SN1578; ConvF(4.50,4.50,4.50);

SAR:: , , ()

Penetration depth: 8.9 (8.6, 9.5) [mm];

Z-Axis: $D_x = 0.0$, $D_y = 0.0$, $D_z = 2.0$

Ambient Temperature (degree C): 22.5

Liquid Temperature (degree C): 21.1

