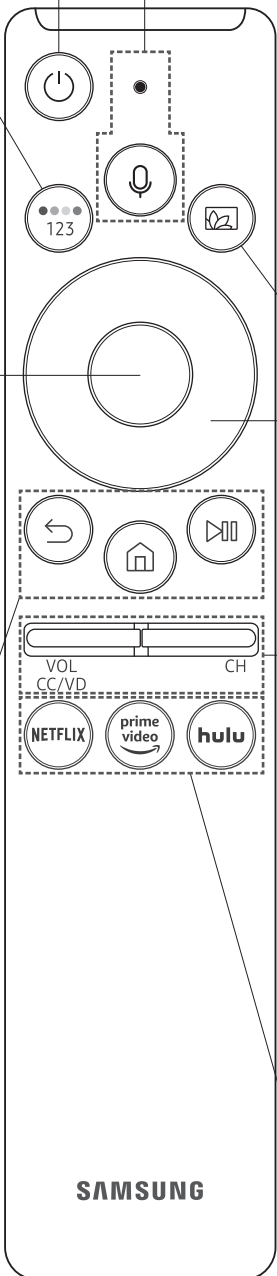


# 02 The Samsung Smart Remote

## About the Buttons on the Samsung Smart Remote

- The images, buttons, and functions of the Samsung Smart Remote may differ depending on the model.



**(Power)**  
Press to turn the TV on or off.

**(Color / Number button)**  
Each time you press this button, the colored buttons window and the virtual numeric pad are displayed alternately.

- Use these colored buttons to access additional options specific to the feature you are using.
- When pressed, a number strip appears on the bottom of the screen. Select numbers and then select **Done** to enter a numeric value. Use to change the channel, enter a PIN, enter a ZIP code, etc.

**(Bixby)**  
Runs **Bixby**. Press and hold the button, say a command, and then release the button to run **Bixby**. When you press the button, the **Explore Now** menu appears at the bottom of the screen.

- Keep the remote more than 0.6 inches from your face when using and speaking to **Bixby** through the mic on the remote.
- For more information about the **Bixby**, refer to **Smart Features > Using Bixby** in the e-Manual.

**(Ambient Mode)**  
In TV mode, press this button to enter **Ambient Mode**. If you press the button when the TV is completely turned off, the TV turns on in **Ambient Mode**.

- For more information about the **Ambient Mode**, refer to **Smart Features > Using the Ambient Mode** in the e-Manual.

**Select**  
Selects or runs a focused item. When pressed while you are watching content, detailed program information appears.

**(Return)**  
Returns to the previous menu. When pressed for 1 second or more, the running function is terminated. When pressed while you are watching a program, the previous channel appears.

**(Play/pause)**  
When pressed, the playback controls appear. Using these controls, you can control the media content that is playing.

**(Smart Hub)**  
Returns to the Home Screen.

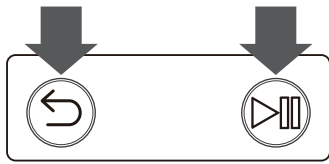
**Directional pad (up/down/left/right)**  
Moves the focus and changes the values seen on the TV's menu.



**VOL (Volume)**  
Move the button up or down to adjust the volume. To mute the sound, press the button. When pressed for 1 second or more, the **Accessibility Shortcuts** menu appears.

**CH (Channel)**  
Move the button up or down to change the channel. To see the **Guide** screen, press the button.

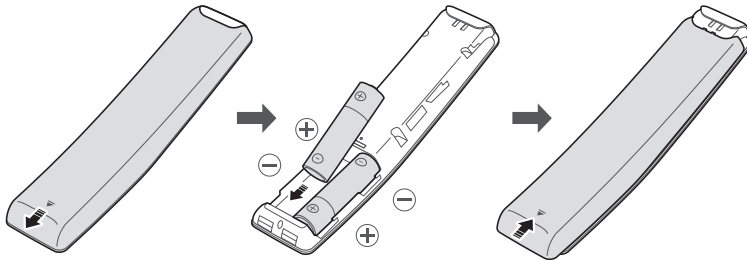
Press each button to run its function.

## Pairing the TV to the Samsung Smart Remote



When you turn on the TV for the first time, the Samsung Smart Remote pairs to the TV automatically. If the Samsung Smart Remote does not pair to the TV automatically, point it at the remote control sensor of the TV, and then press and hold the buttons labeled  and  as shown in the figure on the left simultaneously for 3 seconds or more.

## Installing batteries into the Samsung Smart Remote



To install the batteries, push the rear cover open in the direction of the arrow at the bottom of the illustration, and then insert the batteries as shown in the figure. Make sure that the positive and negative ends are facing in the correct direction. Close the rear cover as shown.

- Alkaline batteries are recommended for longer battery life.

- Battery: DC 3.0 V
- Temperature range: 0 °C ~ 50 °C

## FCC Information

This device complies with part 15 of the FCC Rules. Operation is subject to the following two conditions :

- (1) This Device may not cause harmful interference, and
- (2) This device must accept any interference received, including interference that may cause undesired operation.

Note: This equipment has been tested and found to comply with the limits for CLASS B digital device, pursuant to Part 15 of FCC Rules. These limits are designed to provide reasonable protection against harmful interference when the equipment is operated in a commercial environment. This equipment generates, uses and can radiate radio frequency energy and, if not installed and used in accordance with the instructions, may cause harmful interference to radio communications. However, there is no guarantee that interference will not occur in a particular installation. If this equipment does cause harmful interference to radio or television reception, which can be determined by turning the equipment off and on, the user is encouraged to try correct the interference by one or more of the following measures:

- 1.1. Reorient or relocate the receiving antenna.
- 1.2. Increase the separation between the equipment and receiver.
- 1.3. Connect the equipment into an outlet on a circuit different from that to which receiver is connected.
- 1.4. Consult the dealer or experienced radio/TV technician for help.

## WARNING

Changes or modifications not expressly approved by the manufacturer could void the user's authority to operate the equipment.

"CAUTION : Exposure to Radio Frequency Radiation.

Antenna shall be mounted in such a manner to minimize the potential for human contact during normal operation. The antenna should not be contacted during operation to avoid the possibility of exceeding the FCC radio frequency exposure limit.

"ATTENTION: L'exposition aux rayonnements à fréquence radioélectrique.

Antenne doit être montée de telle manière à minimiser le risque de contact humain pendant l'utilisation normale. L'antenne ne doit pas être contacté pendant le fonctionnement pour éviter la possibilité de dépasser la limite de l'exposition aux fréquences radio de la FCC.

## **IC Information**

This device complies with Industry Canada license-exempt RSS standard(s). Operation is subject to The following two conditions: (1) this device may not cause interference, and (2) this device must accept any interference, including interference that may cause undesired operation of the device.

Le présent appareil est conforme aux CNR d'Industrie Canada applicables aux appareils radio exempts de licence. L'exploitation est autorisée aux deux conditions suivantes:

- 1) l'appareil ne doit pas produire de brouillage;
- 2) l'appareil doit accepter tout brouillage radioélectrique subi, même si le brouillage est susceptible d'en compromettre le fonctionnement.