

# **Internal photos of EUT**

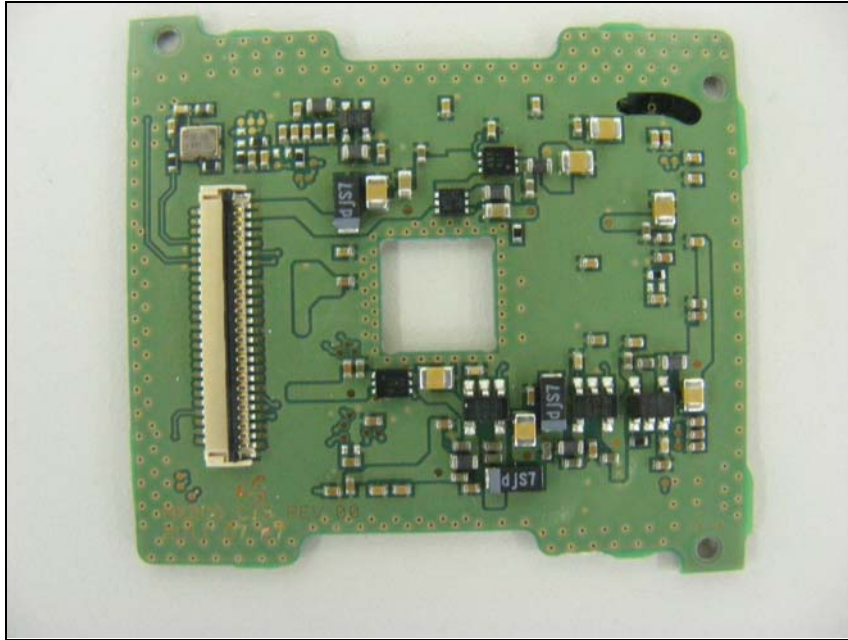
**Top view of Main PCB**



**Bottom view of Main PCB**



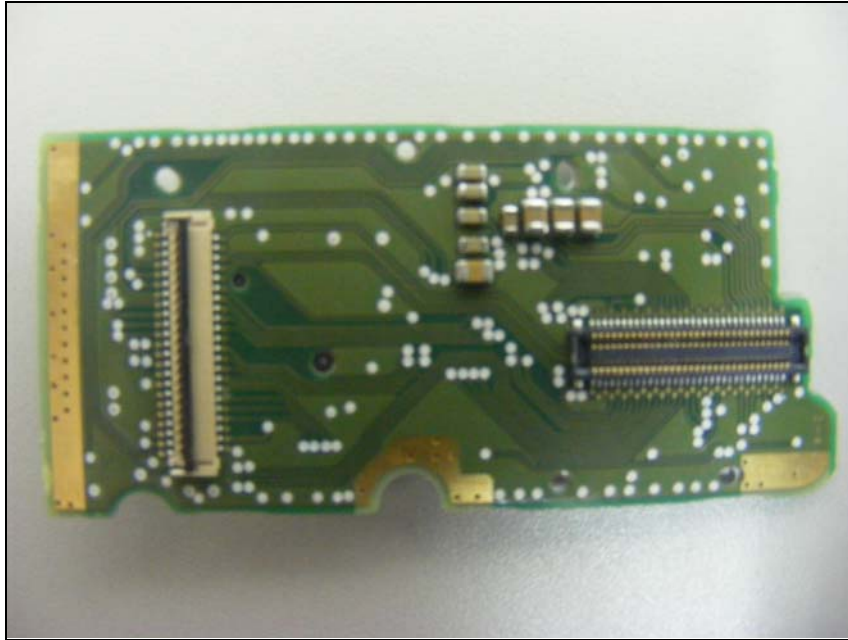
***Top view of LCD PCB***



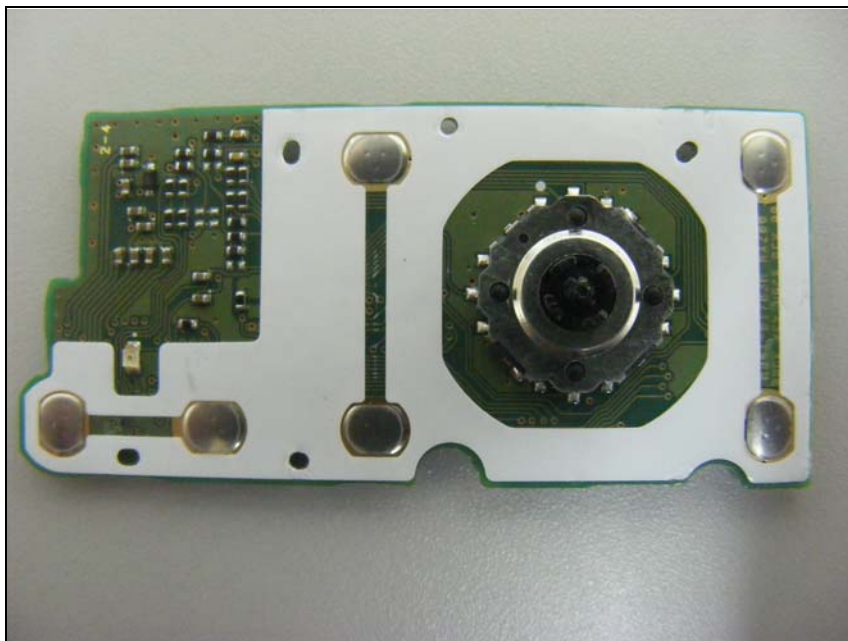
***Bottom view of LCD PCB***



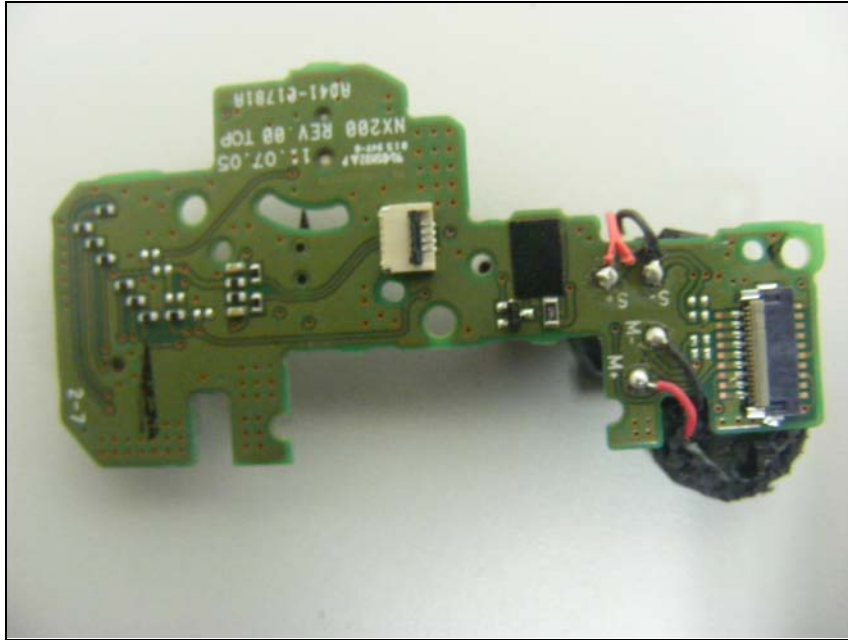
*Top view of Amoled PCB*



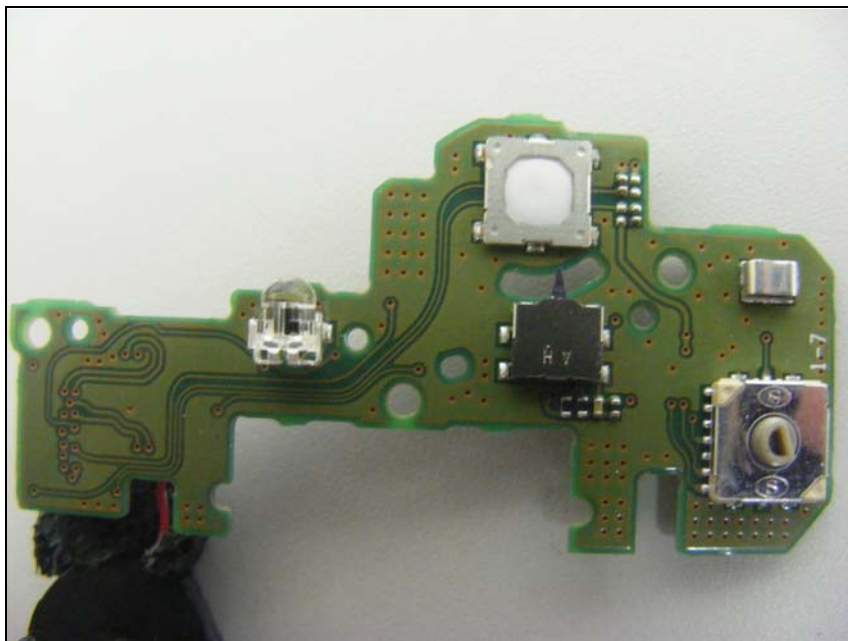
*Bottom view of Amoled PCB*



***Top view of Sensor PCB***



***Bottom view of Sensor PCB***



*Top view of Sub PCB*



*Bottom view of Sub PCB*



*View of Antenna*



WLAN  
Antenna