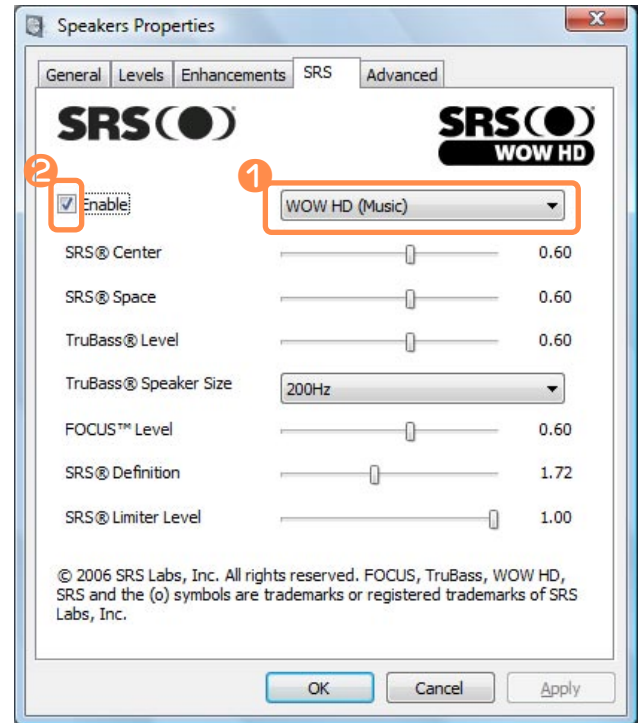


## Using SRS

The SRS function enables you to experience more stereophonic sound by expanding the space-perception through the stereo speaker.

- 1 Right-click over the **Volume** icon (🔊) in the Taskbar and select **Playback Device(P)**.
- 2 Select **Speaker** in the **Playback** tab and click **Properties**.
- 3 Select the **SRS** tab in the **Speaker Properties** window. ① Select a mode, select the ② **Enable** checkbox on the left and click **OK**. Then you can listen to sound through the selected SRS effect.



- **WOW HD(Music)**: Select to listen to music.
- **TruSurround XT(Movie/Video)**: Select to watch a movie.



The SRS function supports the computer's built-in speaker and headphones only.

# Chapter 3.

## Using Microsoft Windows Vista

About Microsoft Windows Vista	73
Windows Vista Screen Layout	76
Control Panel	85

The screen shots used in this chapter may differ from actual screens depending on the Windows Vista version and model.

# About Microsoft Windows Vista

**Microsoft Windows Vista** (hereafter Windows) is a computer operating system. Since you have to learn how to use it in order to use the computer efficiently and effectively, use the **Welcome Center** and **Windows Help and Support** to learn about Windows Vista.

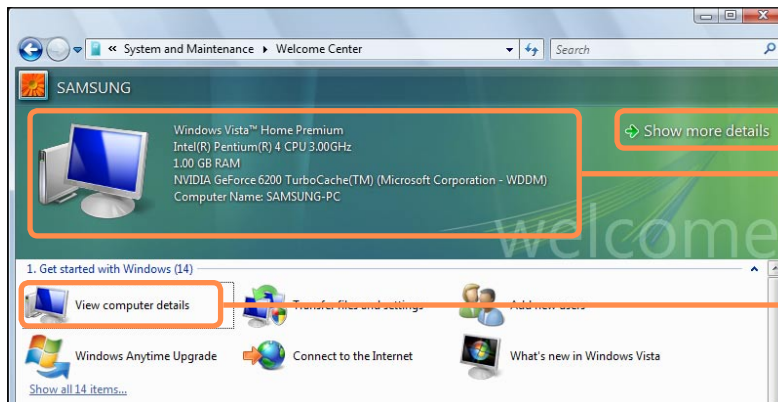


The screen layout may differ depending on the computer model and the operating system.

## Welcome Center

In the Welcome Center, you can view brief descriptions of Windows Vista functions and run the functions directly.

- 1 Click **Start > Welcome Center**.
- 2 If you click on an item, information on the function is displayed in the description window.  
For example, if you click **View computer details**, your computer information is displayed in the description window.  
In addition, if you click on **Show more Details**, you can view more detailed information.



2

Description Window

1



## Windows Vista Demo

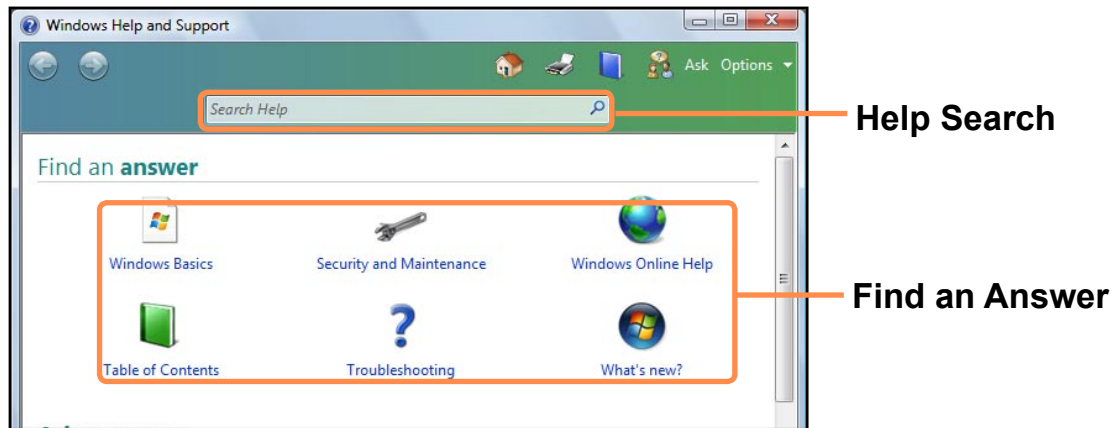
If you click **Start > Welcome Center > Show all 7 items > Windows Vista Demo**, you can watch the Windows Vista introduction movie.

## Help and Support

Windows Help and Support provides information on Windows basic functions and usages.

Click **Start > Help and Support**.

You can find help for frequently used basic functions using Find an Answer and you can search for help by entering a keyword in the Search box.



### Windows Basics



Introduces the basic usage of the computer and the Windows operation system.

You can learn tasks and tools necessary to use the computer.

### Security and Maintenance



You can view help on computer protection and security.

### Windows Online Help



If your computer is connected to the Internet, you can view the necessary information online.

### Table of Contents



The help pages are arranged by subject so that users can easily find the relevant information.

### Troubleshooting



You can view possible problems that may occur while using Windows and solutions to the problems.

### What's new?



You can view help for new Windows Vista features.

## Tablet PC Setting Information

This computer is a Tablet PC with a touch screen.

In the Tablet PC Settings of the Control Panel, you can set the screen correction, screen pivot function and whether to use the left-handed or right-handed option.

Click **Start > Control Panel > Hardware and Sound > Tablet PC Settings**.



### For the efficient use of a Tablet PC

You can use the computer more efficiently in a short time by learning how to use your fingers and the Stylus Pen.

Click **Start > All Programs > Tablet PC** and then click **Tablet PC Touching Training** or **Tablet PC Pen Training**.

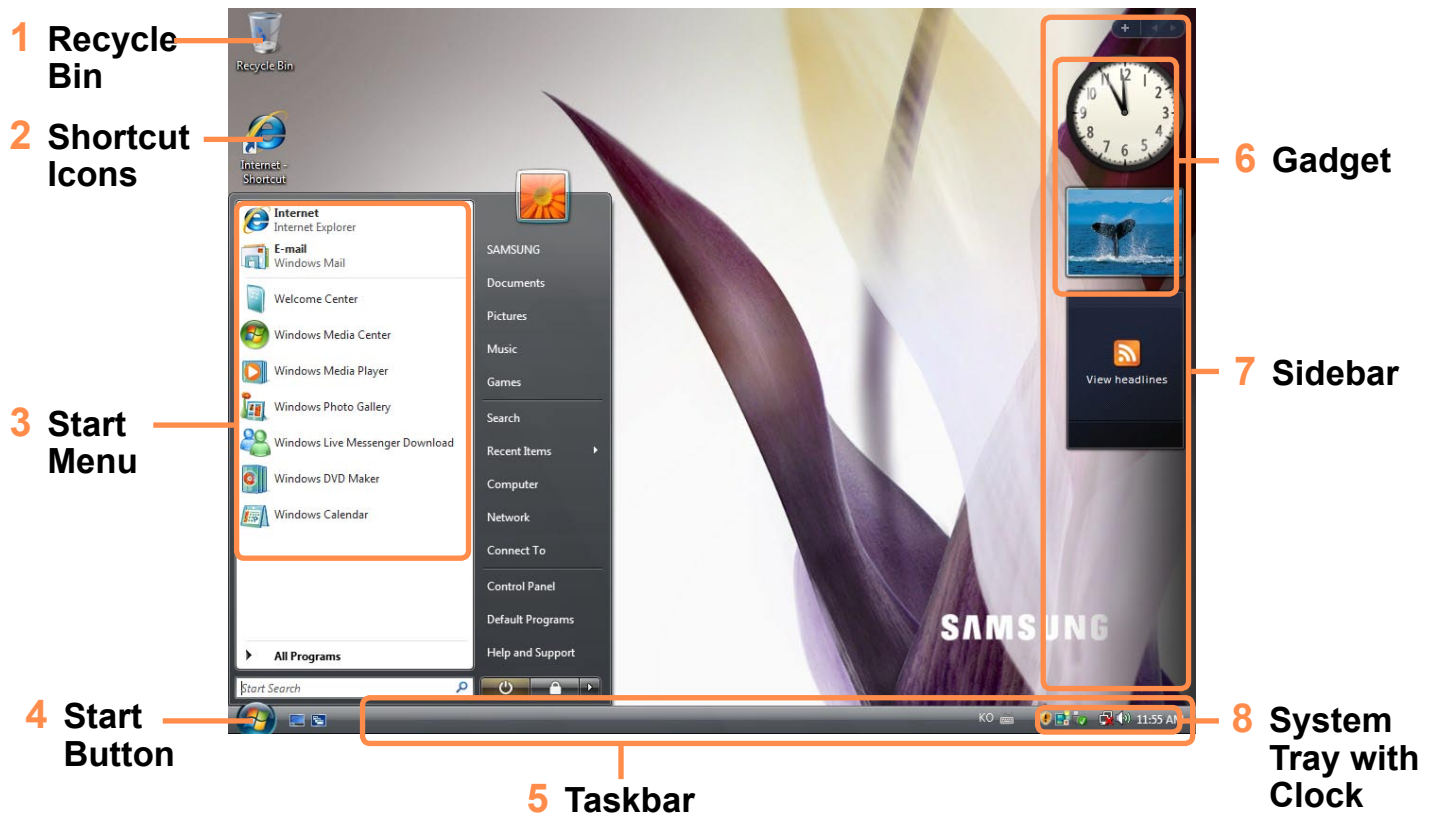
# Windows Vista Screen Layout

## Desktop

If you turn the computer on, the Desktop screen appears. The desktop is the working area on the computer. It consists of a large workspace and a taskbar at the bottom as shown in the figure below.



The screen layout may differ depending on the computer model and the operation system version.



- 
- 1 Recycle Bin**      You can drop useless files and folders here.

---

  - 2 Shortcut Icons**      You can launch programs by clicking the shortcut icons on the Desktop.

---

  - 3 Start Menu**      The menu from which you can launch programs.

---

  - 4 Start Button**      Press the start button. The Start menu appears.

---

  - 5 Taskbar**      Currently running programs are displayed here.

---

  - 6 Gadget**      This is a mini information program that appears on the Sidebar.

---

  - 7 Sidebar**      This is a vertical bar that appears at the side of the Desktop.

---

  - 8 System Tray with Clock**      Shows some running program icons. Icons not being used are hidden. If you click the arrow mark on the left, you can view hidden icons.
- 

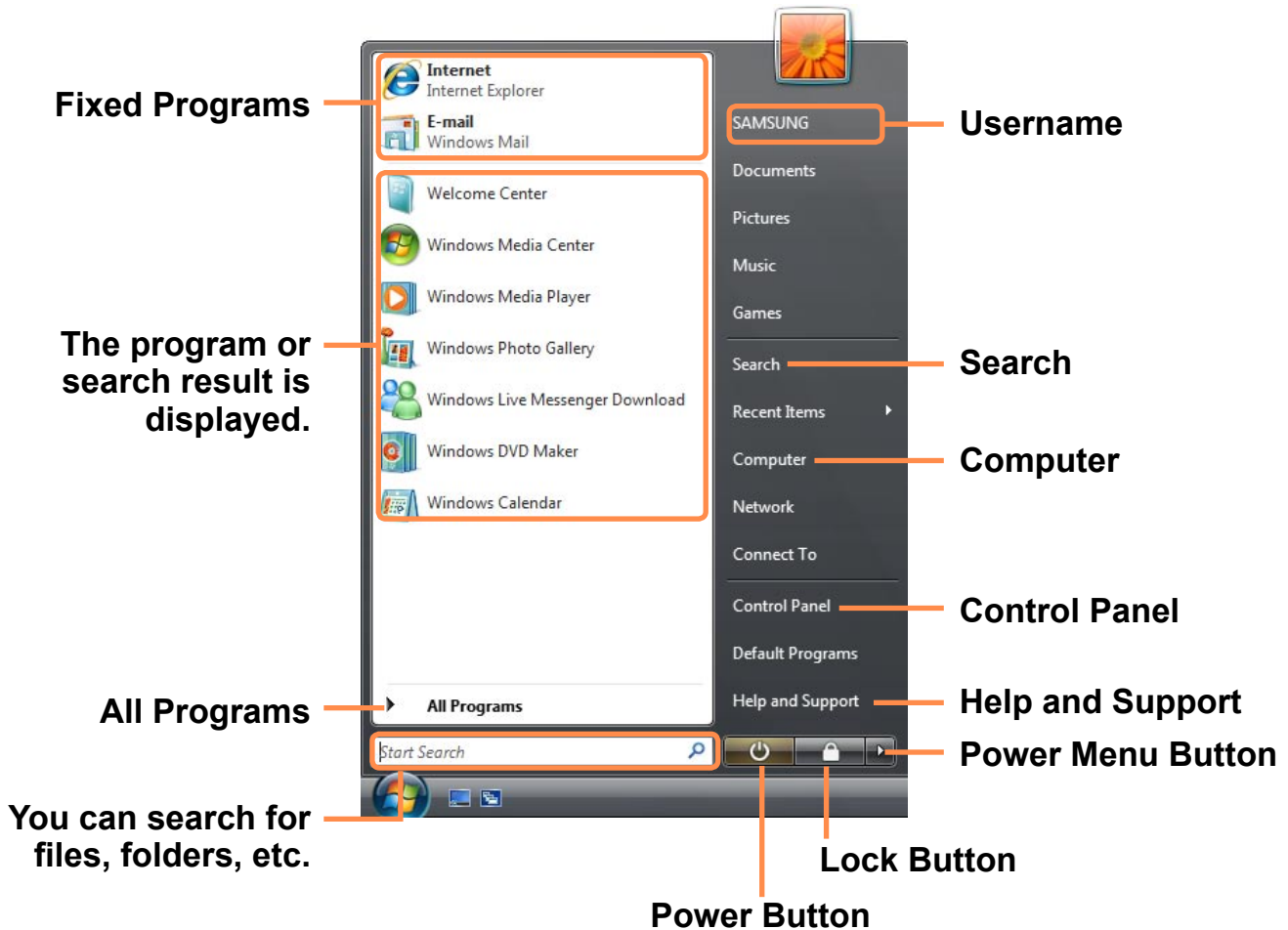


Some item may not be provided depending on the Windows Vista version.









# Start Menu

The menu from which you can launch programs.

Click **Start** (🖥️). The Start menu appears.



---

<b>Search</b>		Enables users to search for files and folders.
<b>Computer</b>		Shows storage devices such as hard disk drives, CD/DVD drives, network drives, etc. In addition, you can manage files and folders here.
<b>Control Panel</b>		Enables users to configure the appearance and settings of Windows such as the Desktop, window colors, hardware and software settings, security, etc.
<b>Help and Support</b>		Provides on-line help about functions and usage of Windows and troubleshooting. You can find a solution to a problem by entering a keyword.
<b>Power Button</b>		Click the Power button to enter Sleep mode. However, what the power button does changes according to the power button setting.  p.90
<b>Lock Button</b>		To lock the computer, click this button. If you lock your computer, no one can use the computer until you enter the password.
<b>Power Menu Button</b>		Click the Power Menu button to shut down, restart, and logoff from the computer.

---

## Sidebar / Gadget

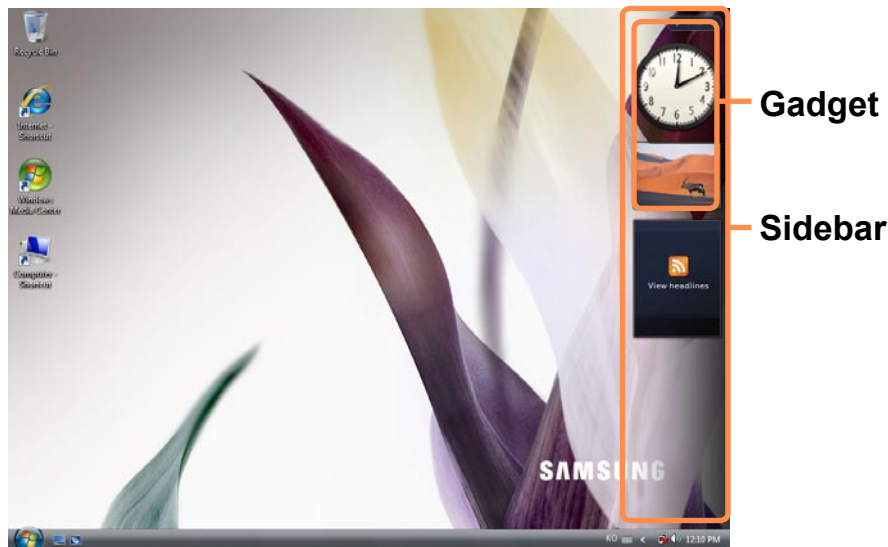
Sidebar is a vertical bar that appears at the side of the Desktop.

A mini program called Gadget runs over the Sidebar which shows information such as stocks, schedule, weather, etc. and provides frequently used tools.

You can download various Gadgets from the Internet other than the default Gadget.

## Sidebar / Gadget Structure

If you launch Windows, the Sidebar is automatically launched and the Sidebar and Gadget appear at the side of the Desktop.

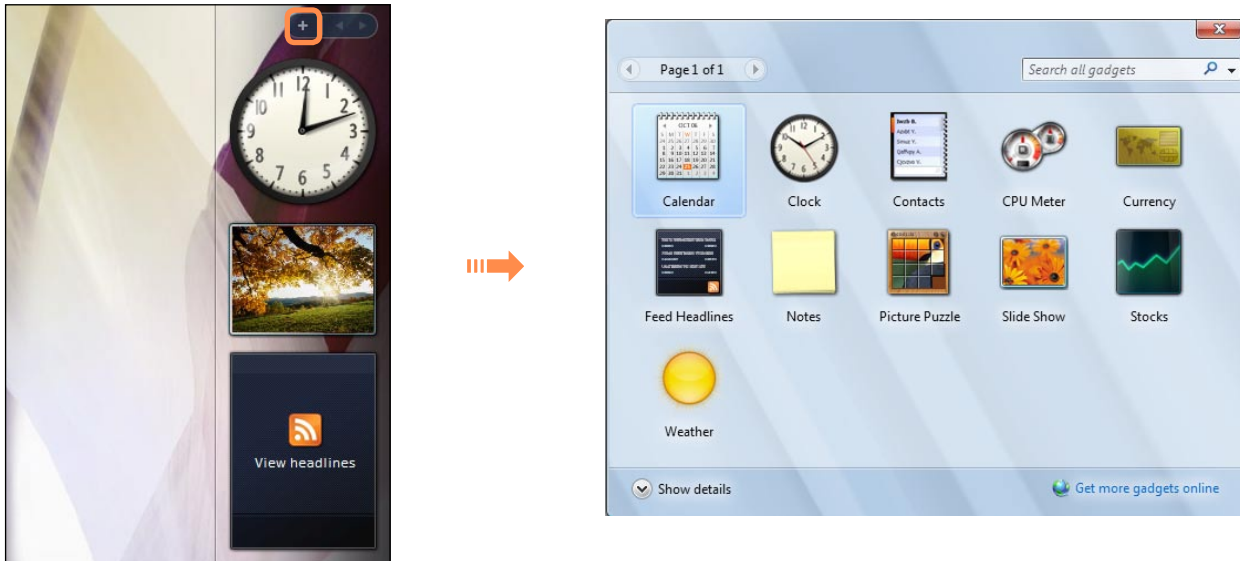


- If the Sidebar is not launched automatically when Windows starts, click **Start > All Programs > Accessories > Windows Sidebar** to launch it manually.
- To always display the Sidebar, right-click over the Sidebar and select **Properties** and then select the **Sidebar is always on top of Screen** option in the **Arrangement** field.

## Adding a Gadget

You can find a gadget in the **Gadget Gallery** and add it to the Sidebar.

**1** If you click the **+** at the top of the Sidebar, the Gadget Gallery opens.



**2** If you double-click on a gadget, the gadget is added to the Sidebar.

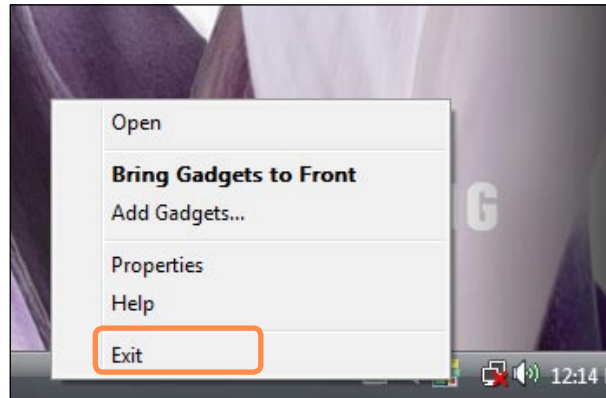


- If you drag a gadget to a new location with the Stylus Pen it moves the gadget to that location.  
Not only can you move a gadget onto the Sidebar but also out of the Sidebar.
- If you tap on the gadget with the Stylus Pen, the Close and Option buttons appear.

## Exiting the Sidebar

---

Right-click on the Sidebar icon (📌) in the System Tray with the clock on the taskbar and select **Exit** to exit the Sidebar.



### Closing the Sidebar

- Even if you close the Sidebar, the Sidebar continues running in the System Tray in the clock area, though it is not displayed on the Desktop.
- To close the Sidebar, right-click over the Sidebar on the Desktop and select **Close Sidebar**.

To open the Sidebar again, right-click on the Sidebar icon (📌) in the System Tray with the clock on the taskbar and select **Open**.

# Window

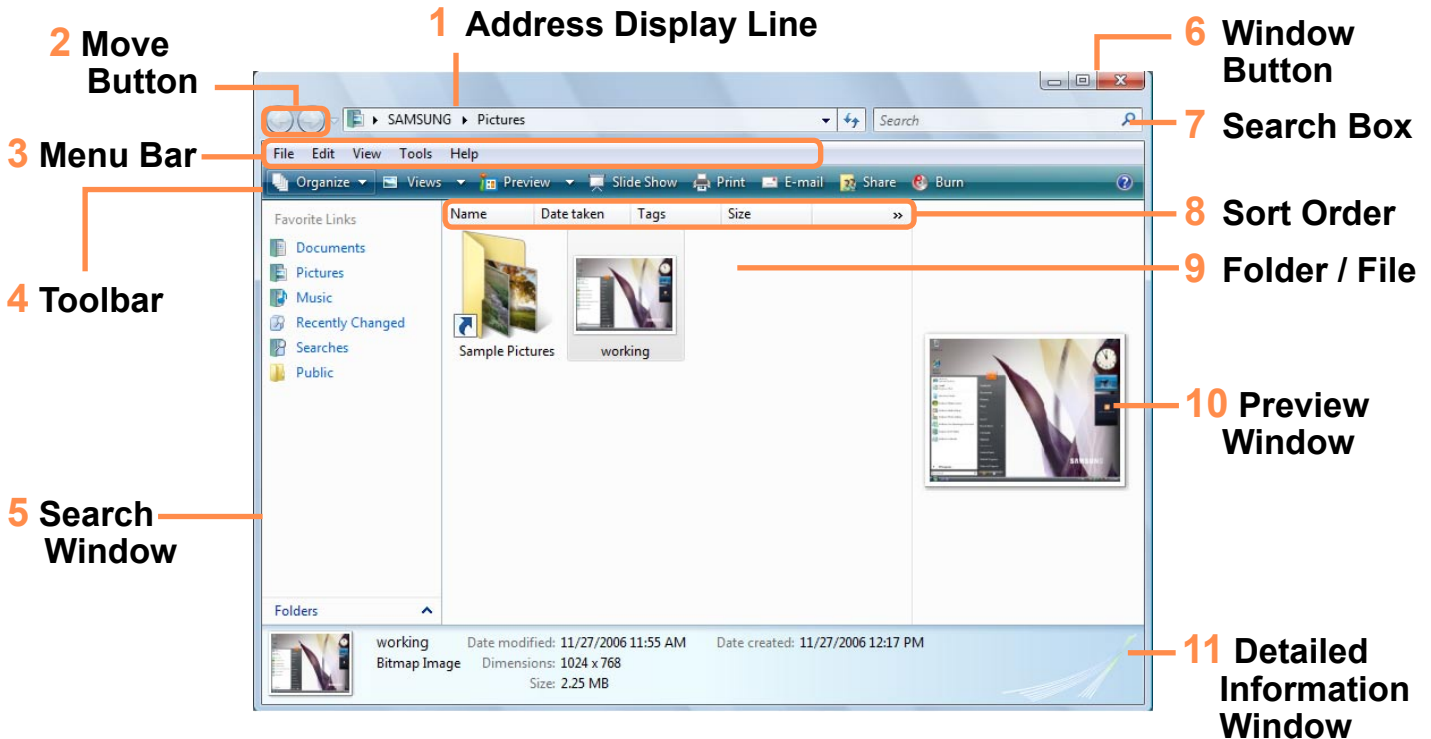
A window is the basic frame for a computer operation. As an example, let's see the layout of a **Pictures Window**.






Click **Start > Pictures**.



The items and names may differ depending on your computer model and the Windows Vista version.

## Window Layout



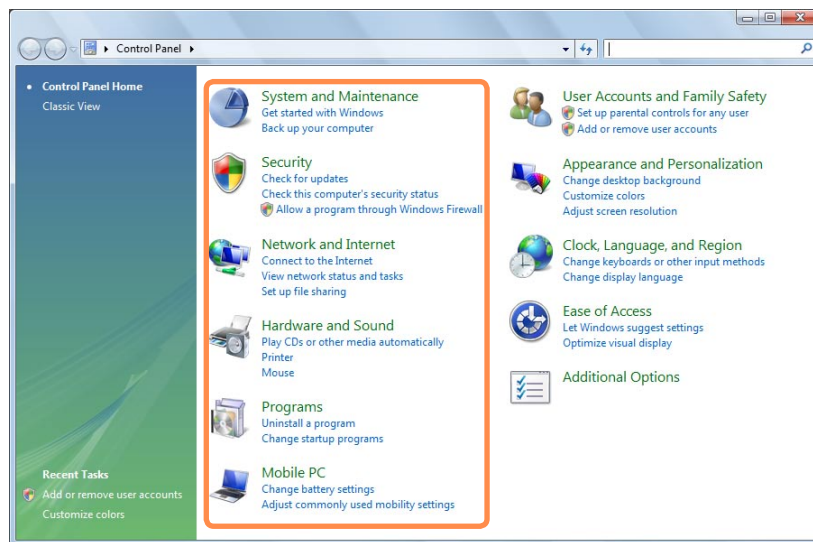
<b>1 Address Display Line</b>	Shows the location of the currently selected folder or file.
	You can move to the previous or next page by clicking the Back or Next buttons.
<b>2 Move Button</b>	 Opens the previously opened page.  Opens the next page, when you have returned to a previous page.
<b>3 Menu Bar</b>	Provides menus to run functions for the selected folder or file, etc.
<b>4 Toolbar</b>	Provides icons to quickly run frequently used functions.
<b>5 Search Window</b>	<p>You can view the drive structure and the currently opened window location.</p> <p>You can move directly to a folder by clicking the folder in the Search window.</p>
<b>6 Window Button</b>	<p>Used to resize the window.</p>  Minimizes the window.  Maximizes the window.  Closes the window.
<b>7 Search Box</b>	You can search for files by specifying the text included in the file-name or within the file or file attributes.
<b>8 Sort Order</b>	Used to change the sort order of the files.
<b>9 Folder / File</b>	The drives, folders and files included on the computer are displayed here.
<b>10 Preview Window</b>	<p>You can preview a selected file before opening it.</p> <p>A preview function is not provided for drives and folders.</p>
<b>11 Detailed Information Window</b>	Shows the general information of the selected file.

# Control Panel

Tools for configuring Windows are located in the Control Panel.

## Opening the Control Panel

Click **Start > Control Panel**.



### System and Maintenance



Using this function, you can configure Windows performance options.

### Security



Using this function, you can check the current security status to protect the computer and configure the security settings for the firewall, spyware, etc.

### Network and Internet



Using this function, you can check the network status and configure the settings.  
You can change the Internet connection settings.

### Hardware and Sound



Using this function, you can add a printer and other hardware, change the settings, and update the device drivers.

### Programs

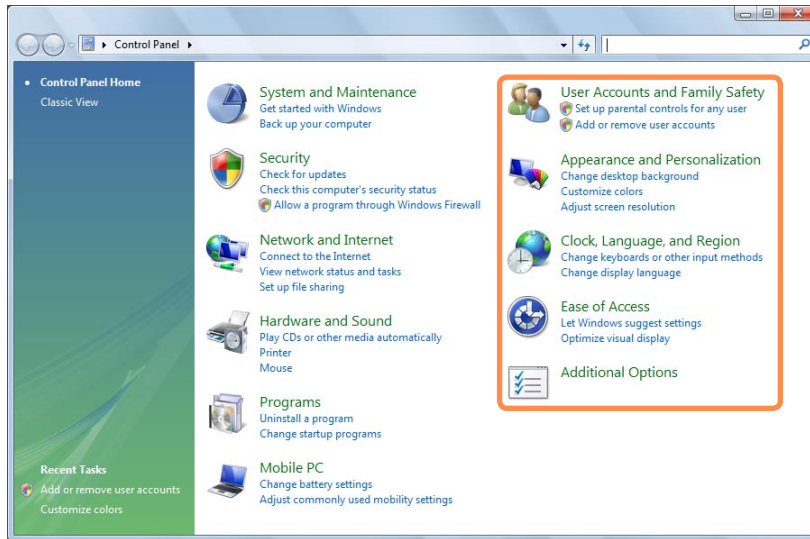


Using this function, you can remove a program or Windows function and download a new program from the internet.

## Mobile PC



You can set up the mobility, power option and personal settings for your mobile PC and synchronize with another portable device or network folder.



### User Accounts and Family Safety



You can change the user account settings, passwords and configure the Parental Controls function.

### Appearance and Personalize



Using this function, you can configure the Desktop style, theme or screen saver settings.

### Clock, Language, and Region



Using this function, you can configure the date, time, language and regional settings.

### Ease of Access



Using this function, you can select options for hearing and sight impaired persons as well as for challenged persons. You can configure the audio recognition settings.

### Additional Options



Using this function, you can configure other Control Panel item settings.

## User Accounts

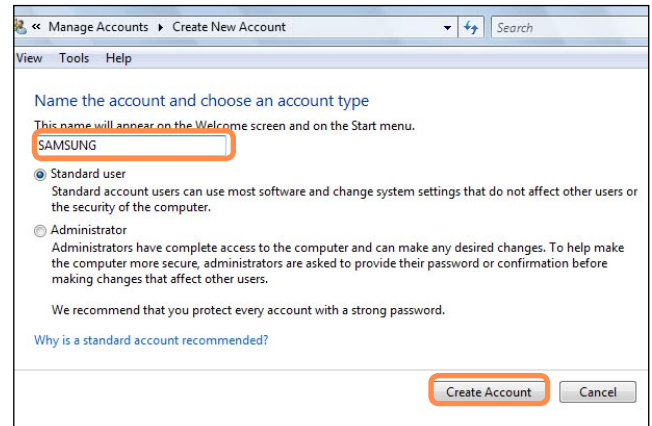
Using Windows Vista User Accounts, more than one user can easily share the same PC.

The procedures to add and delete a user account and to switch users are described below.

### Adding User Accounts

- 1 Click **Start > Control Panel > User Accounts and Family Safety**.
- 2 Click **User Accounts > Manage another account**.
- 3 Click **Create a new account**.
- 4 Enter a new **username** and select either Standard User or Administrator.

- 5 Click **Create Account** to add a new account.



## Removing User Accounts



- If there is only one **administrator account** for the computer, you cannot delete the **administrator account**.
- You can only delete another account when you are logged in as an administrator.

**1** Click **Start > Control Panel > User Accounts and Family Safety > User Accounts**.

**2** Click **Manage Another Account**.

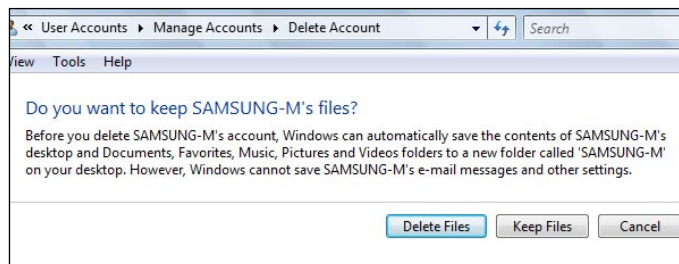
**3** Click on the user account to be deleted.

**4** Click **Delete the Account** in the Make changes to user's account menu.

**5** A window appears asking whether you want to save the desktop, documents, favorites, music files, pictures and video folders as new folders on the Desktop before deleting the account.

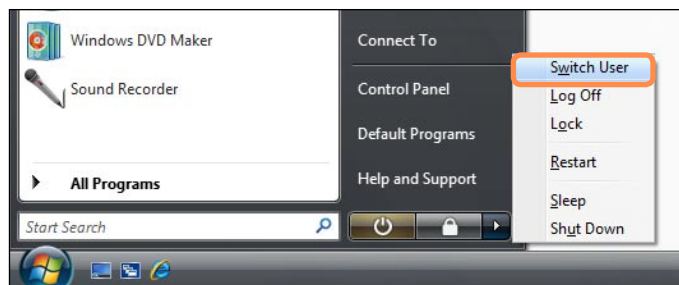
If you click **Delete files**, the account and all files belonging to the account are deleted.

If you click **Keep files**, only the account is deleted and the files belonging to the user are saved on the Desktop.



## Switching User Accounts

**1** Click **Start** (  ) on the taskbar and select **Switch User**.



**2** If you click on another username in the start screen, you can login with that user account.

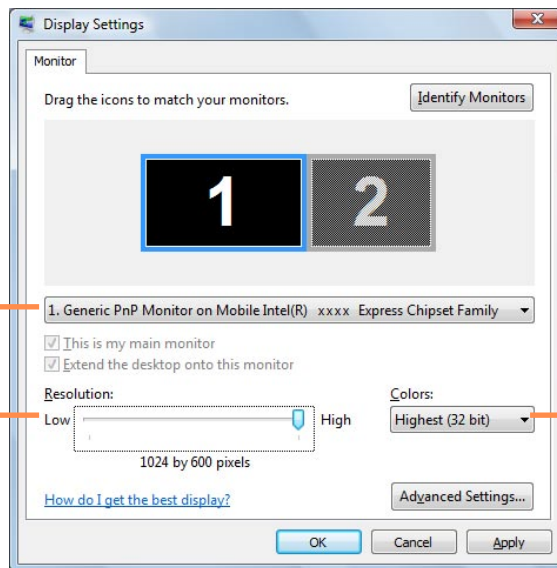
## Changing the screen resolution and the color

The resolution refers to the number of pixels displayed on the screen. When increasing the resolution, the items on the Desktop become smaller and more items can be displayed on the screen. The higher the color quality, the more colors are displayed on the screen.

- 1 Click **Start > Control Panel > Appearance and Personalization > Personalization > Display Settings**.

Alternatively, right-click on the Desktop and select **Personalization > Display Settings** from the pop-up menu.

- 2 The Display Settings screen appears.  
Change the resolution and color settings and click the **OK** button.



You can check the graphics chipset.

To change the resolution, slide the resolution sliding bar to a particular resolution.


To change the color quality, click this button and select a particular quality.



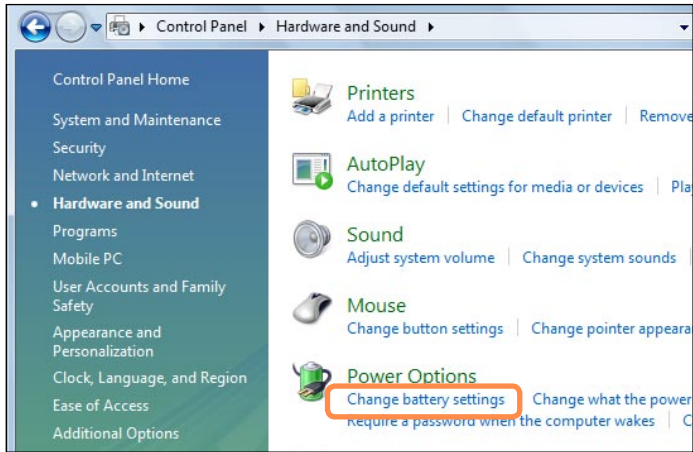
The following resolutions and color qualities are recommended according to the computer LCD panel type.

LCD Type	Resolution	Color Quality
7" WSVGA	1024 x 600	Very High (32bit)

## Configuring the Start Menu Power Button

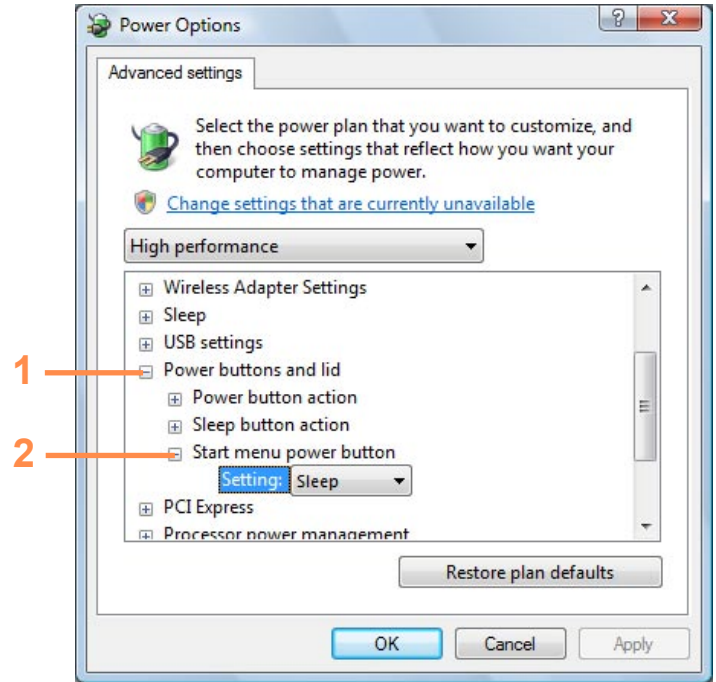
The Power button on the Start menu () performs various operations depending on the settings.

- 1 Click **Start > Control Panel > Hardware and Sound > Power Options** and then **Change battery settings**.



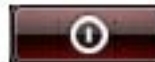


- 2 Click on **Change Plan Settings** in the currently selected power setting.

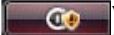
- 3 Click on **Change Advanced Power Settings** and open **Start Menu Power Button** in the **Power Buttons and Lid** item.



## 4 Select a power plan and click the **OK** button.

Type	Description	Power Button Image after Setting Change
<b>Sleep</b>	<p>Sets the computer to enter Sleep mode. The screen and hard disk will be turned off to reduce the power consumption of the overall system. If you slide the <b>power switch</b> of the computer to downwards, the computer wakes from Sleep Mode and you can resume working.</p>	
<b>Hibernate</b>	<p>Sets the computer to hibernate. All work is automatically saved, the screen is turned off and the computer makes no noise. If you slide the <b>power switch</b> of the computer to downwards, the computer wakes from Hibernation Mode and you can resume working.</p>	
<b>Shut down</b>	<p>Shut down the computer. You have to shut down the computer after closing all programs and opened folders.</p>	



- The Power button is set to Sleep mode by default.
- If the computer is set to download Windows updates automatically, the update mark () is displayed on the Power button when an update is ready. If you click this button, the update is installed and the computer is shut down when the update installation is complete.

## Phishing Filter

Phishing is a method used by hackers to illegally collect personal information such as credit card numbers, passwords, other account numbers, etc. through emails or websites.

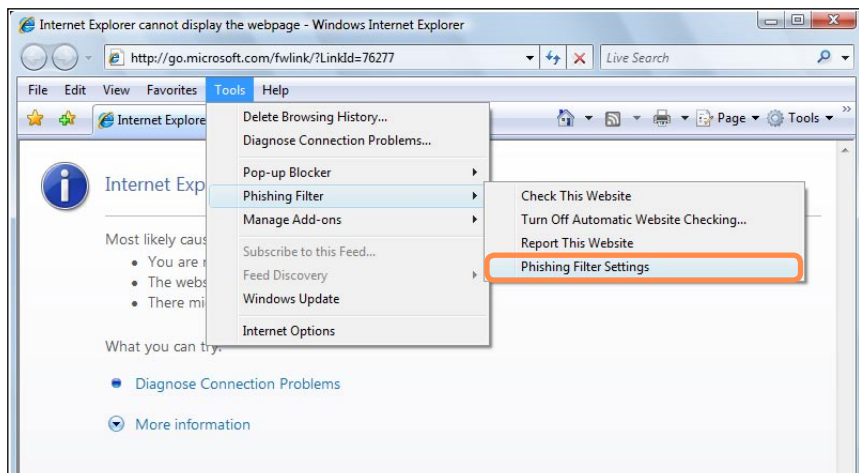
The Phishing Filter protects users from these phishing attempts.

If the current page is judged to be a suspicious website, the Phishing Filter displays a warning message with an alarm when the Phishing Filter is enabled. In addition, if a page that the user is currently trying to open is registered as a known Phishing website list, it displays a warning page instead.

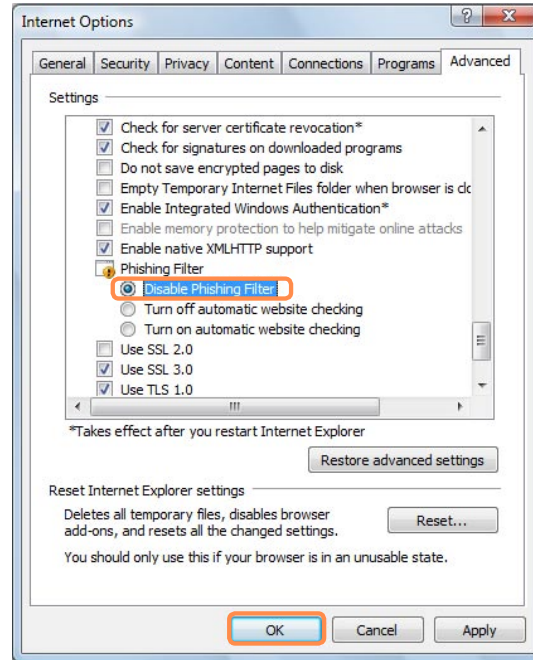
## Phishing Filter Settings

---

- 1 Launch Internet Explorer.
- 2 Select **Tools** from the menu and click **Phishing Filter > Phishing Filter Settings**.



- 3** The Internet Options window opens. Locate the Phishing Filter item in the Settings field. Select **Turn on automatic website checking** and click the **OK** button to use the Phishing Filter.



- 4** To not use the Phishing Filter, select **Turn off automatic website checking** in the Settings field in Step 3 above.

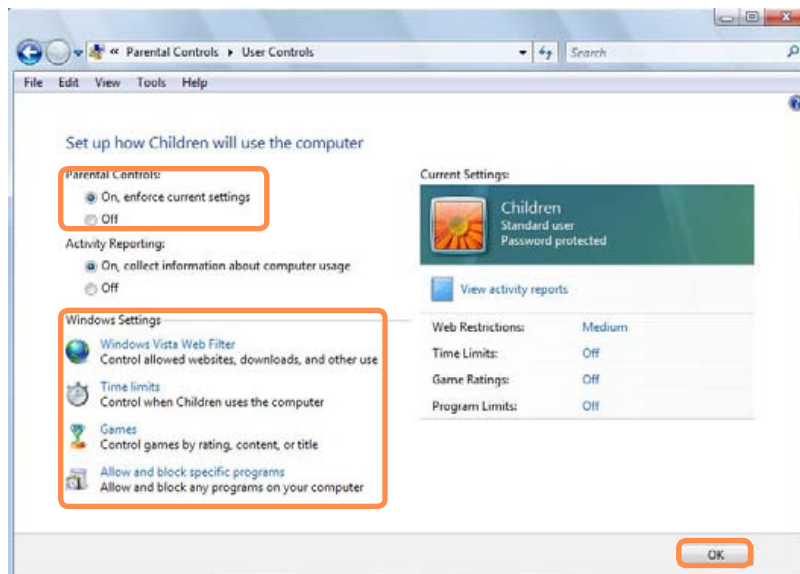
## User control function

Using this function, you can control the content your children can access. You can determine for how long they can use the computer and the content they can access. When you have finished the settings, click OK to finish.

## Configuring Parental Controls

---

- 1 Click **Start > Control Panel > User Accounts and Family Safety > Parental Controls**.
- 2 Select a user to configure the Parental Controls for. The **User Controls** window for that user opens.
- 3 Click **Parental Controls > Use** and configure the necessary settings in the **Windows Settings** at the bottom. If you click **OK**, the Parental Controls setting is completed.

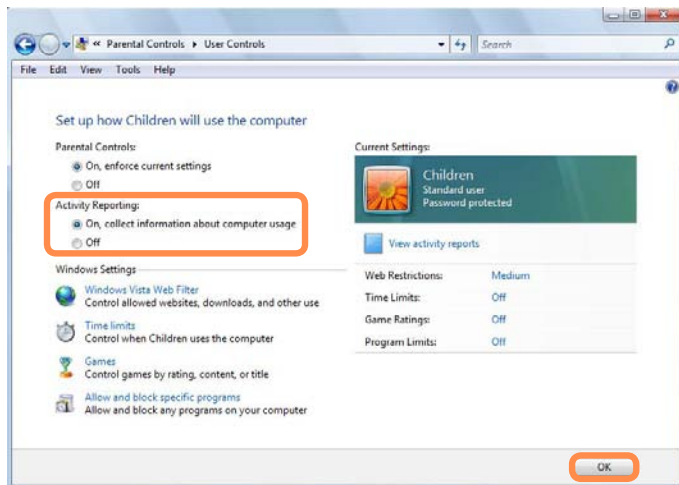


## Using Activity Report

You can view and evaluate your children's internet access through the Activity Report.

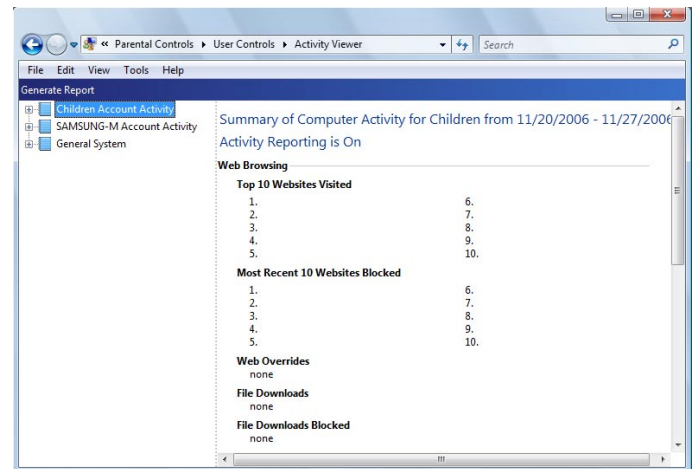
**1** Open the **User Controls** window referring to the descriptions of **Parental Controls**.

**2** Set **Activity Reporting** to **On**.



**3** To view the Activity Report, click on **View Activity Report** on the right of the **User Controls** window.

**4** If you click the **View Activity Report**, the following window opens displaying a computer operating summary.



# Windows Mobility Center

Using Windows Mobility Center, you can easily configure computer settings such as the volume, the wireless network connection settings, the display settings, etc. all at the same time.



Some functions may not be supported depending on the Windows Vista version.

- 1 Click **Start > All Programs > Accessories > Windows Mobility Center**.  
Alternatively, click **Start > Control Panel > Mobile PC > Windows Mobility Center**.

The screenshot shows the Windows Mobility Center window with several settings panels. Annotations with orange lines point to specific features:

- Volume Control**: Points to the Mute checkbox and the Volume slider.
- Rotating the Screen**: Points to the Rotate screen button.
- Easy Network Manager Window**: Points to the Easy Network Manager section.
- Battery Status Settings**: Points to the Battery Status section, which shows 92% available and a 'Turn wireless on' button.
- Display Connection Settings**: Points to the External Display section, which shows 'No display connected' and a 'Connect display' button.

The interface also includes sections for 'Sync Center' (No sync partnerships), 'Presentation Settings' (Not presenting), and 'Easy Battery Manager' (Auto Dimming On, Battery Only).

- 2 Configure the volume, the battery status, the external display, the Sync center, etc. according to your requirements.



- Configurable items may differ depending on the installed Windows Vista version or programs.
- If Easy Network Manager program is installed, you can see Easy Network Manager window.
- Turning off WLAN in the Mobility Center is not applied to the Status indicator and the MENU window. If you turn off the WLAN with touch sensor, the status indicator of WLAN will be turned off and the WLAN button in the Mobility Center will be inactivated.



## Chapter 4.

# Using the Network

Wired Network	98
Wireless Network	101
Using the Easy Network Manager	104
Bluetooth	108

# Wired Network

A wired network is a network environment used for a company network or broadband internet connection at home.



You can also configure the network settings using the Easy Network Manager.

☰ p.104

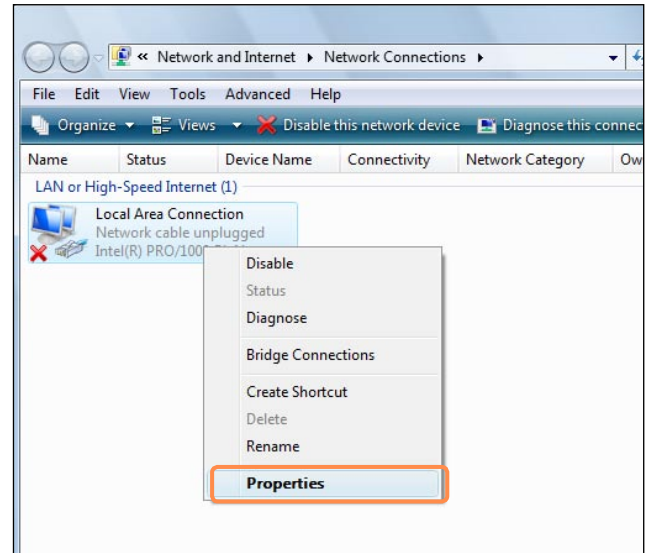
- 1 Connect a LAN cable to the computer's LAN port.



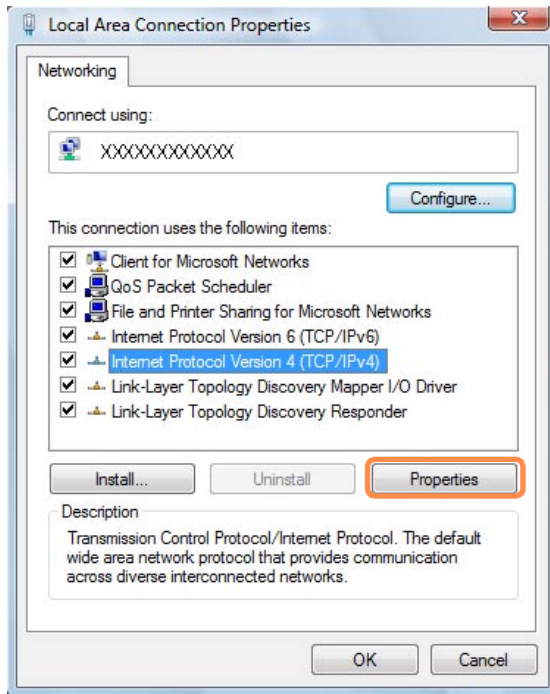
- 2 Click **Start > Control Panel > Network and Internet > Network and Sharing Center**.

- 3 Click **Manage Network Connections** from the left pane.

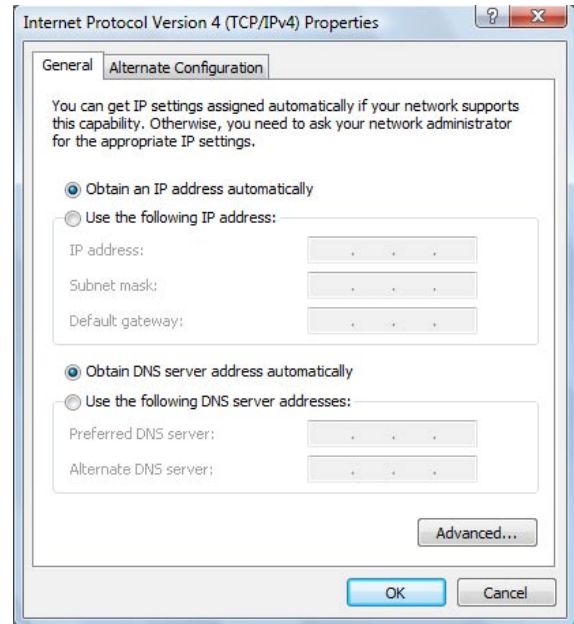
- 4 Right-click over the **Local Area Connection** and select **Properties**.



- 5 Select **Internet Protocol Version 4 (TCP/IPv4)** from the **Networking** tab and click **Properties**.



- 6 Configure the IP settings. When using DHCP, select **Obtain an IP address automatically**. To use a static IP address, select **Use the following IP address**, and set the IP address manually.



- The LAN device driver may differ depending on your LAN device model.
- To add a network component, click **Install** in the screen shown in the figure above. You can add clients, services, and protocols.



When not using DHCP, ask your network administrator for the IP address.

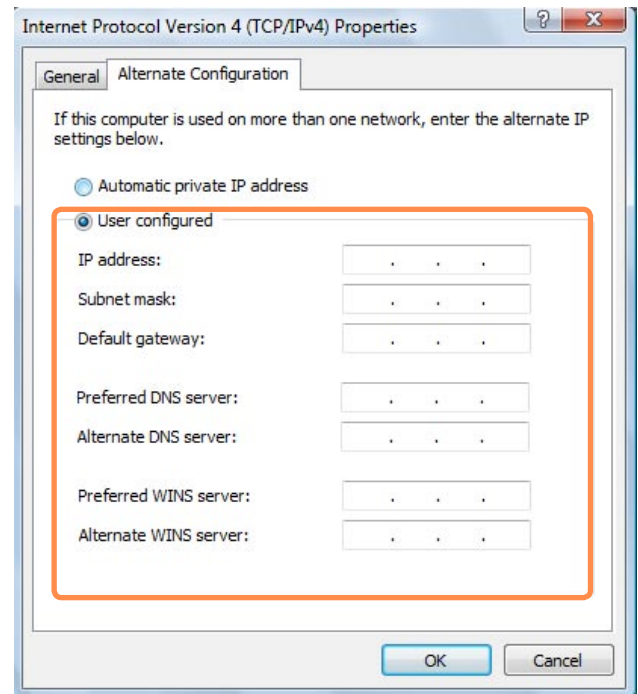
- 7 When you have completed the settings, click the **OK** button. The network settings have been completed.

## Using both DHCP and a fixed IP simultaneously

Using the **Alternate Configuration** providing by Windows Vista, you can set both automatic and fixed IP addresses and then you can select to use either of them to connect to the Internet.

- 1 Click **Start > Control Panel > Network and Internet > Network and Sharing Center** and click **Manage Network Connections** in the left pane.
- 2 Right-click over the **Local Area Connection** and select **Properties**.
- 3 Select **Internet Protocol Version 4 (TCP/IPv4)** from the **Networking tab** and select **Properties**.

- 4 Select the **Alternate Configuration** tab, select **User configured** and fill in the corresponding fields.




- 5 When you have completed the settings, click the **OK** button.

# Wireless Network

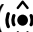
A wireless network (Wireless LAN) environment is a network environment that enables communicating between multiple computers at home or a small-size office through wireless LAN devices.



- The descriptions below are for computer models with a Wireless LAN card or device. You can also configure the wireless network settings using the Easy Network Manager.  p.104

A Wireless LAN device is optional. To view the installed wireless LAN card, click **Start > Control Panel > Hardware and Sound > Device Manager > Network Adapter** and click the + symbol.

The figures in this manual may differ from the actual ones depending on your wireless LAN device model.

- To use the wireless LAN, you have to turn the wireless LAN on first. To turn it on, click the **MENU** button and set the **Wireless LAN** item to **On**. If the wireless LAN is turned on, the **Wireless LAN LED** () is lit.

## Wireless LAN Connections

Wireless network connections can be classified into 3 categories and this manual describes the connection procedures for connecting through an AP.

### ■ Access Point (AP)

You can connect to the Internet or another computer on the network through an AP.



#### What is an Access Point (AP)?

An AP is a network device that bridges wired and wireless LANs, and corresponds to a wireless hub in a wired network. You can connect multiple wireless LAN installed computers to an AP.

### ■ Computer-to-computer (ad hoc) network

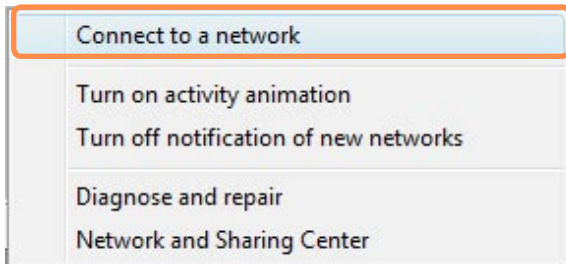
This is also called a peer-to-peer network. In computer-to-computer wireless networks, you can connect 2 or more computers with wireless LAN modules.

For details, see the descriptions that appear when clicking **Start > Help and Support > Table of Contents > Networking-connecting computers and devices > Setting up a network > Setting up a computer-to-computer (ad hoc) network**.

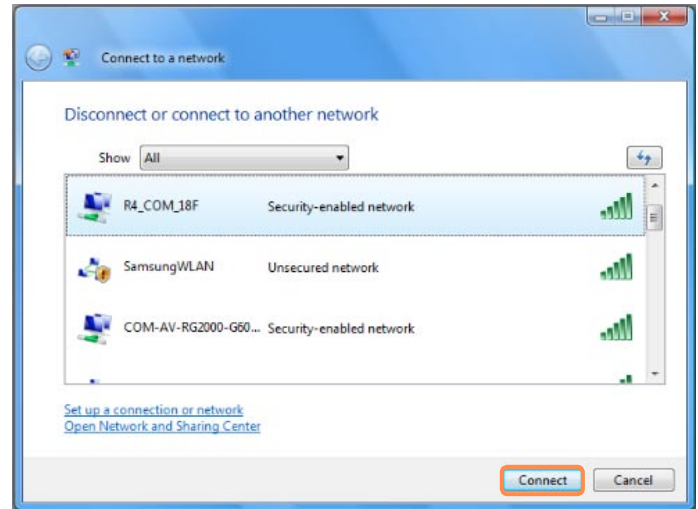
## Connecting to a Wireless LAN

If there is an AP, you can connect to the Internet via the AP using the Wireless LAN connection method provided by Windows Vista.

- 1 Right-click over the **Network Connections** (📶) icon on the taskbar and click **Connect to the Network**.



- 2 Select an AP to connect to and click **Connect**. If there is a configured network key for the AP to connect to, the Enter Network Key window appears. Enter the network key in the window and then click the **Connect** button.



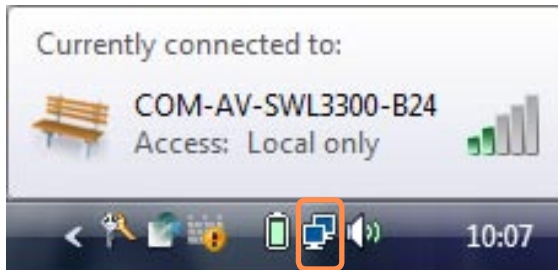
Ask your network administrator for the network key, if necessary.

- 3 When **Connected** to the AP is displayed, click the **Close** button. You can access the network.

## Checking the network connection status

---

If you move the pointer over the **Network Connections** icon () of the Taskbar, you can view the connection status.



# Using the Easy Network Manager

Easy Network Manager is a program that helps configure the network settings.

Easy Network Manager provides the following features.

- **You can easily configure the network and printer settings.**
- **You can immediately use the network without having to define new network settings again after moving to another location.**

By configuring the network settings (IP address, printer settings, etc.) for each location, you can immediately access the network without following the network setting procedures each time regardless of your location.

- **You can diagnose the network status.**

## Network Settings

This section describes the procedures to connect to the Internet by setting up a network. The setting up procedures include procedures to add a printer to the network.

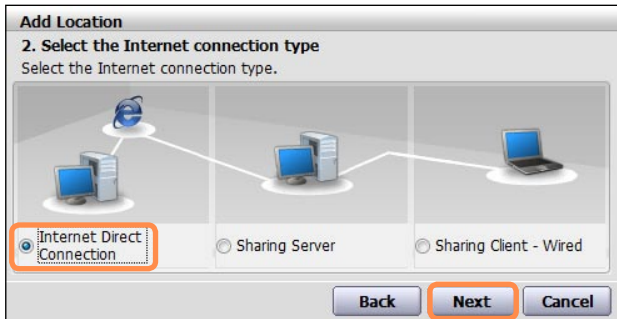
- 1** To use a wired LAN, connect the LAN cable to the LAN port. To use the wireless LAN, you have to turn the wireless LAN on first.  
To turn it on, press the **MENU** button and set the **Wireless LAN** item to **On**. If the wireless LAN is turned on, the **Wireless LAN LED** (Ⓜ) is lit.

- 2** Click **Start > All Programs > Samsung > Easy Network Manager > Easy Network Manager**.

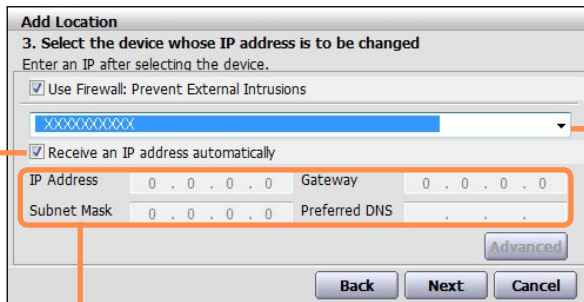
- 3** Click the **Add** button.

- 4** Select a network location icon and enter the name of the location (e.g. Home). Click the **Next** button.

- 5 Select **Internet Direct Connection** and click the **Next** button.



- 6 Select the LAN device, setup the IP address and click the **Next** button.



### Select Device

Select a device to be connected to the Internet. Select either Wired LAN or Wireless LAN.

### IP Settings

To use a static IP address, fill in the fields. For the IP address information, ask your network administrator.

### Obtain an IP address automatically

Select DHCP to use this option (automatic IP setting).

- 7 Click **Add Printer** and set up a printer according to the wizard. When the printer has been added, click the **Refresh** button, select the newly added printer and then click the **Finish** button.

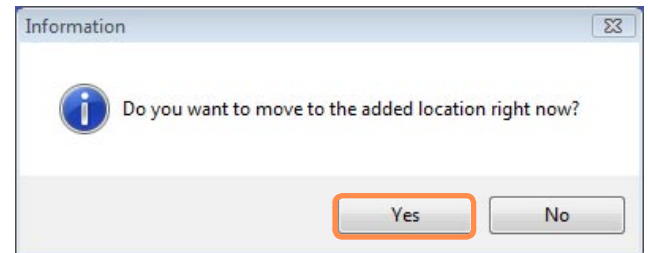


To not add a printer, click the **Finish** button.

- 8 When the network settings are complete, the '**Do you want to move to the newly added location now?**' message appears. Click the **No** button.

An icon for the added location is created. The network settings have been completed.

If you select '**Yes**', the network settings for the added location are applied.



To add a new location, repeat the procedures from Step 3 above.

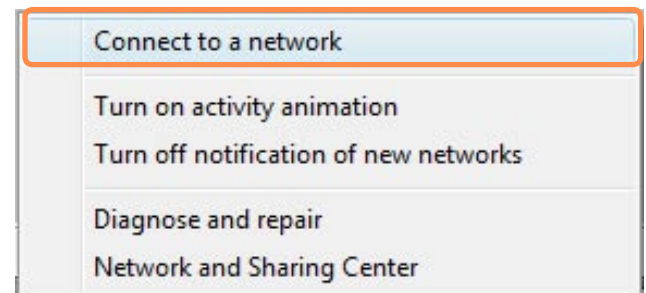
## Using in Another Location

By configuring the network settings (IP address, printer setting, etc.) for each location, you can immediately access the network in one click, without performing the network setting procedures regardless of your location.

- 1 Click **Start > All Programs > Samsung > Easy Network Manager > Easy Network Manager** when connected to the Internet.
- 2 Select an icon that represents the corresponding location from the Saved Locations window and then click **Move**.
- 3 If the Internet connection is a wired LAN, you can immediately load the settings for the new location and the corresponding network connection information is displayed in the Current Location Information window.

If the Internet connection is a wireless LAN, you have to select an AP as follows.

- 1 Right-click over the **Network connection** (📶) icon on the Taskbar using the mouse and select **Connect to the Network**.



- 2 Select an available AP and click the **Connect** button. If a network key is required, ask your network administrator for the key information.

## Diagnosing the Network Status

You can diagnose the network state and find solutions for why you cannot connect to the network.

- 1 Launch Easy Network Manager.
- 2 Select **Management** and **Diagnose Status** from the menu.



- 3 The Network Connections window appears.  
Click **Start** to start the network diagnosis.
- 4 When the diagnosis is complete, a device with a problem is marked by an exclamation mark icon with a description of the problem at the bottom of the window.

# Bluetooth

Bluetooth is wireless communications technology that allows access to nearby devices such as another computer, a cell phone, printer, keyboard, mouse, etc. without a cable connection. Using Bluetooth, you can exchange files, connect to the Internet, and construct a private network as well as communicate with a keyboard, mouse, printer, etc. without a cable connection.



- The Bluetooth supporting function is only available between devices (a computer, cell phone, PDA, printer, etc.) and the connection may be restricted according to the profile of the corresponding device.
- The Bluetooth function is optional and may not be supported depending on your model.
- Compatibility to devices without the authentication or logo of Bluetooth is not guaranteed.

## Bluetooth Function

### File Transmission



You can exchange files between two Bluetooth devices.  
You can exchange files with another Bluetooth device such as another computer, cell phone, PDA, etc.

### Network Access



You can connect to another Bluetooth-installed computer in the same way as an Ad-Hoc mode in wireless LAN and connect to the network via an AP or an Internet connection sharing server.

### Network Access through a Phone Connection



You can connect to the network via a Bluetooth cell phone.

### Data Sync (Synchronization)



You can synchronize PIMS data (Outlook E-mail address data) with Bluetooth devices such as a cell phone, PDA, another notebook computer, etc.

---

### Electronic Business Card (Vcard) Exchange



You can exchange business cards with Bluetooth devices such as a cell phone, PDA, another notebook computer, etc.

---

### Sound Output



You can output computer sound to another Bluetooth device or vice versa.

---

### HID Connections



You can connect and use Bluetooth peripherals such as a keyboard, mouse, joystick, etc.

---



For more information about using the Bluetooth function, refer to the online help of the Bluetooth Device.


## Using Bluetooth

The procedures to exchange files between computers supporting Bluetooth and to use other Bluetooth devices are described below.

### Using Bluetooth Devices (Connecting Headset supporting Bluetooth)

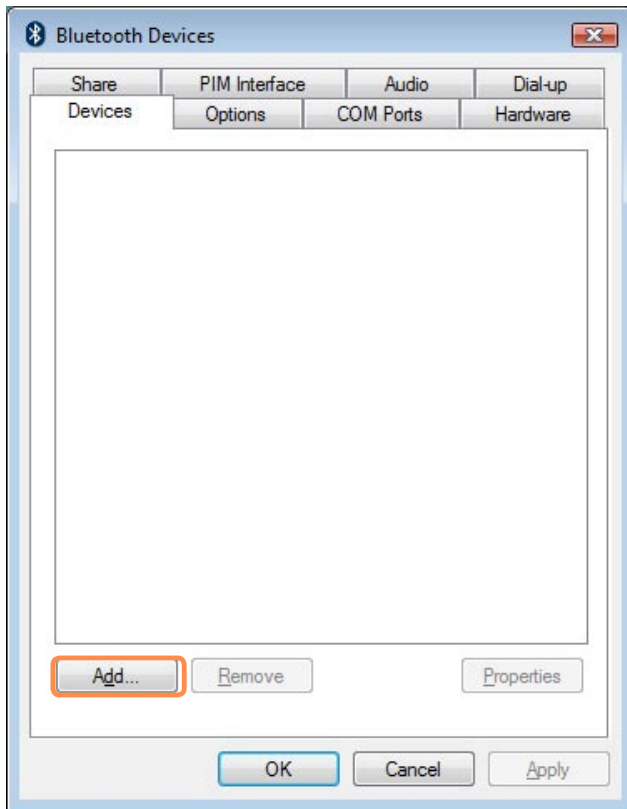
---

As an example, the procedures to connect to a headset supporting Bluetooth will be described below. Searching for Bluetooth devices corresponds to Steps 1 to 4 and may be slightly different depending on the device.

- 1 To connect to another device via Bluetooth, double-click the Bluetooth icon() on the Taskbar.



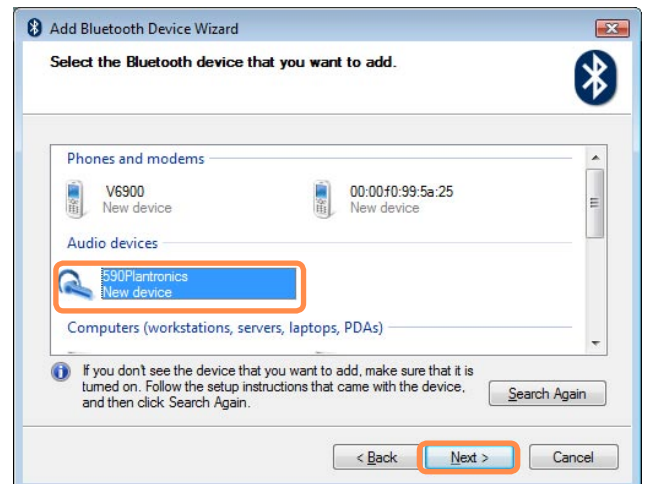
- 2 If the Bluetooth Device window appears, click **Add**.



- 3 If the Add Bluetooth Device Wizard screen appears, select the **My device is set up and ready to be found** and click the **Next** button.



- 4 When the search is complete, all available Bluetooth devices are listed. Select the Headset from the list and click the **Next** button.





- A Bluetooth device is represented by the device type and name (Dedicated Bluetooth ID).
- To use the Bluetooth headset, **Bluetooth Pairing Mode** is required. For the procedures to set up **Pairing Mode**, refer to the **Headset Manual**.

**6** If the Completing the Add Bluetooth Device Wizard window appears, click **Finish**.

**7** The stereo headset is connected and you can now use the Bluetooth headset normally.

**5** Enter the PIN in the device PIN field and click the **Next** button.

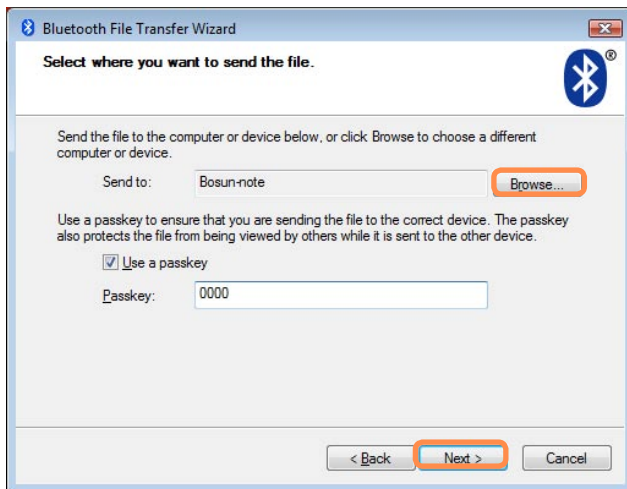


For pairing, a PIN is required. Since a PIN is provided by the headset manufacturer, refer to the corresponding manual.

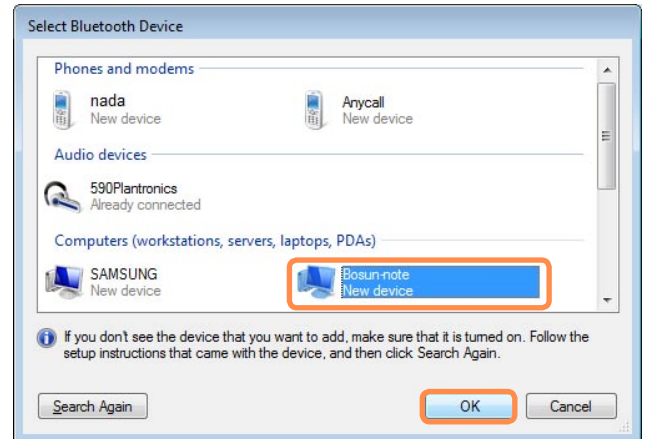
## Exchanging Files between Bluetooth Computers

The procedures to exchange files between computers with Bluetooth capability are described below.

- 1 On the computer which is sending a file (hereafter Computer A), right-click the **Bluetooth icon** (📶) on the taskbar and select File Transfer.
- 2 Click **Browse**, select a Bluetooth device to send the file to and click the **Next** button in the Select Bluetooth Device window.



- 3 Select a Bluetooth device to send the file from and click the **OK** button.



- 4 Enter a PIN in the Bluetooth PIN Code field and click the **Next** button.



The **Bluetooth PIN Code** is a password used for connecting two Bluetooth devices. The user just enters the same PIN Code (E.g. same numbers) on both Bluetooth devices to make the connection.

- 5 Click **Browse**, specify a file to be sent and click **Next** button in the Select File to be Sent screen.

**6** After a short while, the Bluetooth PIN Code required dialog box appears on Computer B. Enter the code entered in Step 4 above.

**7** If the FTP File Access Privilege Request window appears on Computer B, click on the window. If the Select Access Permission window appears, click the **OK** button.

## Usage Instructions

---

- Bluetooth devices to be connected must be within a 3m (10 ft.) distance.
- For a better communications environment, there should be no walls or obstacles between the Bluetooth devices.
- You can connect to only one Bluetooth device at a time for a phone connection, data syncing, electronic business card exchange, FAX transmission/reception, sound related functions, and serial port functions.

- Using the network connection or file transmission function, multiple Bluetooth devices can be connected. However, since connecting to multiple devices may slow down the data rate or make the connection unstable, connecting to one device at a time is recommended.
- The Bluetooth function of a Bluetooth PDA, mobile phone, mouse or keyboard may be turned off. To use them in connection with a Samsung computer supporting Bluetooth, you must check if the Bluetooth function of the device to connect to is turned on.

For the procedures on turning on the Bluetooth function of a device, refer to the relevant device manual.

- The services provided by Bluetooth devices may vary depending on their capabilities. For the services provided by the Bluetooth device, refer to the device manual.



# Chapter 5.

## Using Applications

Introducing Programs	115
Using Origami Experience	118
CyberLink PowerDVD	120
Samsung Update Plus	122
Play AVStation	124
AVStation Now	138
Play Camera	140
Using OmniPass Program	143

# Introducing Programs

Using the software supplied with the Samsung computer, you can easily use functions and troubleshoot problems.

Try to use the software after learning about the basic use of the software. For detailed information, refer to the help section of the corresponding software.



Every software program may not be provided or the version may differ depending on your computer model.

In addition, the screen capture images may differ from actual ones depending on the computer model and software version.



## Multi Media Functions

---

### ■ CyberLink PowerDVD (, Optional)

Using this program, you can play a DVD title.

The CyberLink PowerDVD program is only supplied when you have purchased an external ODD, and you have to install the program additionally.

☰ p.120

### ■ Play AVStation (, Optional)

Play AVStation is an integrated multimedia program that enables users to enjoy better quality music, photographs, videos, movies, etc. all with a single program.

☰ p.124

### ■ Origami Experience (, Optional)

Origami Experience is a program that categorizes programs installed on the computer for easier and more convenient use. ☰ p.118

It is optional and is not supplied with some models.

### ■ Play Camera (, Optional)

This software enables taking pictures and video recording by using the cameras on the front and back of the computer. ☰ p.140

## Management Functions

---

### ■ Samsung Update Plus (, Optional)

Samsung Update Plus is a software function that examines and updates the Samsung software and drivers installed on your Samsung computer to the most recent versions. ☰ p.122

### ■ Easy Network Manager (, Optional)

Easy Network Manager is a program that enables you to easily configure the network settings.

You can configure the network settings for each location and you can also diagnose the network status. ☰ p.104

### ■ Easy Battery Manager (, Optional)

Easy Battery Manager is a power management program that provides easy-to-use power management and power saving settings so that the battery usage time can be extended. ☰ p.162

## Troubleshooting Functions

---

### ■ OmniPass (, Fingerprint Identification software, Optional)

OmniPass is fingerprint identification software. You can register your fingerprint and use it by placing your finger on the fingerprint identification sensor instead of using a password.

You can turn the computer on, login to Windows and encrypt a file, all using your fingerprint. 📖 p.143

### ■ SAMSUNG Magic Doctor (, Optional)

SAMSUNG Magic Doctor is troubleshooting software provided by Samsung Computer for system diagnosis, and restoring the system.

The system diagnosis function enables users to diagnose system problems without assistance from others.

### ■ Samsung Recovery Solution II (, Optional)

Using this program, you can restore your computer to its initial status before a problem occurred while using the computer.

# Using Origami Experience

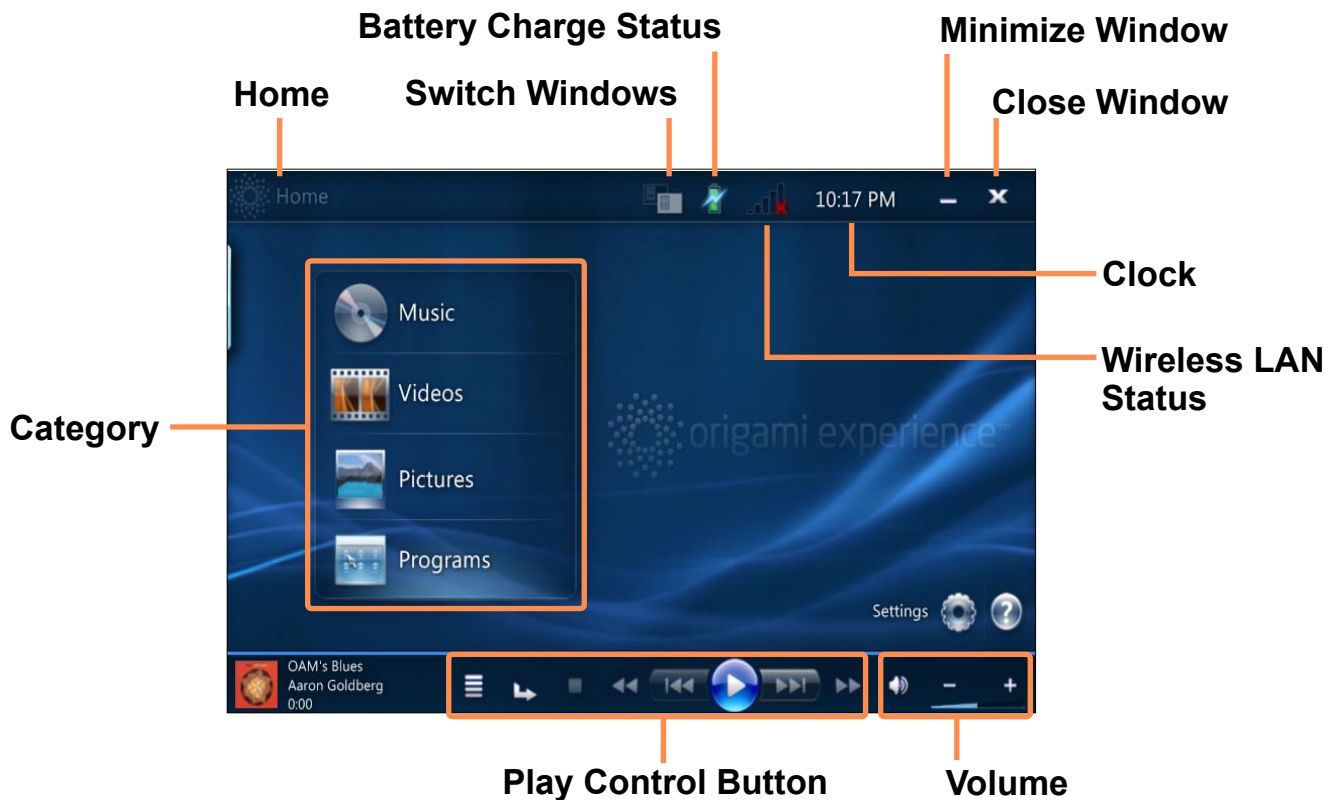
Origami Experience is a program that categorizes programs installed on the computer for easier and more convenient use.



It is optional and is not supplied with some models.

The terms and the screen figures in the manual may differ from actual ones.

To launch Origami Experience, click **Start > All Programs > Microsoft Origami Experience Pack > Origami Experience**.

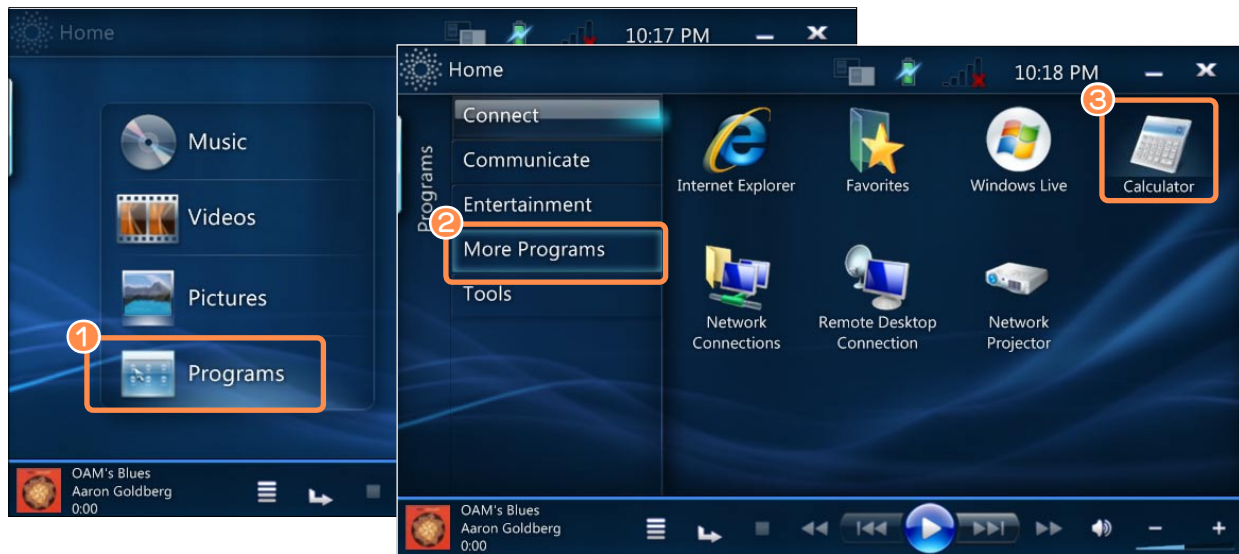




For example, the procedures to launch the **Calculator** are described below.

Launch **Origami Experience**.

Click **Programs > More Programs > Calculator**.



# CyberLink PowerDVD

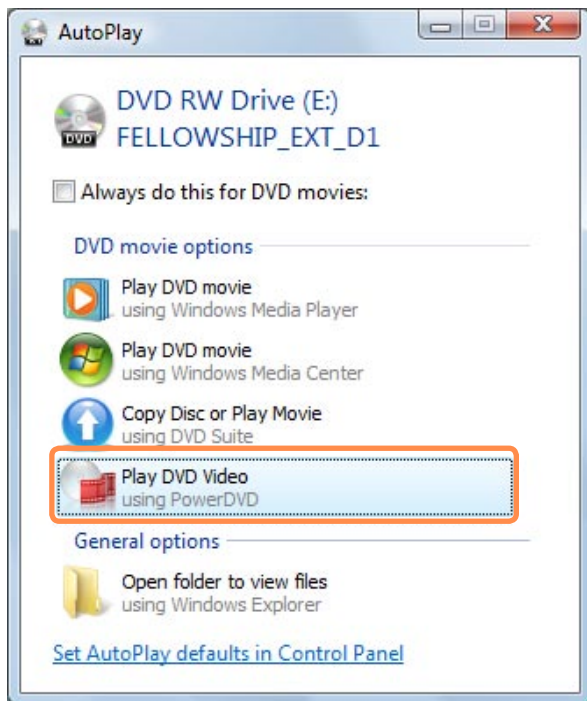
CyberLink PowerDVD is a DVD player program.



The CyberLink PowerDVD program is only supplied when you have purchased an external ODD, and you have to install the program additionally. It is optional and is not supplied with some models.

- 1 Insert a DVD title into the DVD drive.
- 2 Select **PowerDVD** and click the **OK** button.

After a moment, the DVD title will play.



- 3 If the DVD title is not automatically played, click **Start > All Programs > CyberLink DVD Suite > Power DVD > CyberLink PowerDVD**.

- 4 Then click the Play icon in the control panel of CyberLink PowerDVD to play the DVD title.



Play

Undock Player Panel



If you click the **Undock Player Panel** button, the program control panel transforms as follows.



### ■ Detailed Usage

For more detailed usage, click **Start > All Programs > Cyberlink DVD Suite > Power DVD > PowerDVD Help**.

### ■ DVD Region Code

A DVD title has a region code according to the international specifications so that it can be played only in that specific region.

DVD titles with a region code will only play on DVD drives and program for playing with the same region code.

A DVD drive is sold with an empty region code and the region code is set when the user inserts a DVD title into the drive for the first time. Whenever a DVD title is inserted with a region code different from that of the DVD drive, the region code of the DVD drive is automatically changed to the region code of the DVD title.

However, changing the region code of a DVD drive is limited to 5 changes. After that, the region code is permanently fixed to the last region code. If you need to change the region code after changing the code 5 times, contact a service center. Although a service center can help you in this case, you will be charged a service fee.

# Samsung Update Plus

Samsung Update Plus is software that examines and updates the Samsung software and drivers installed on your Samsung computer to the latest version.



- To search for updates and update your computer using Samsung Update Plus, your computer must be connected to the Internet.
- The update search result may differ depending on your computer model.



Samsung Update Plus does not provide updates for applications installed after purchasing the computer.

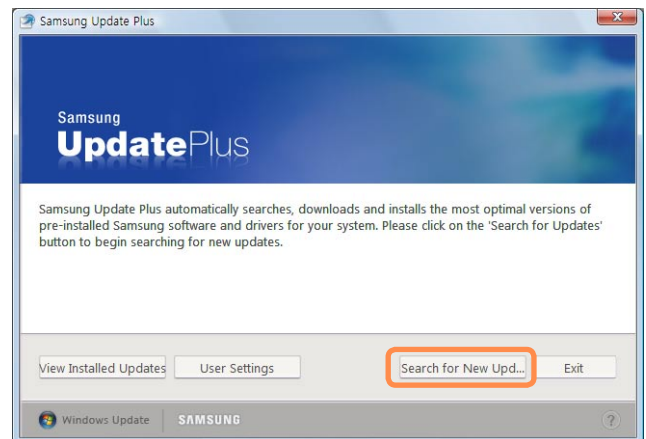
## To update the software and drivers

- 1 Click **Start > All Programs > Samsung > Samsung Update Plus > Samsung Update Plus**.

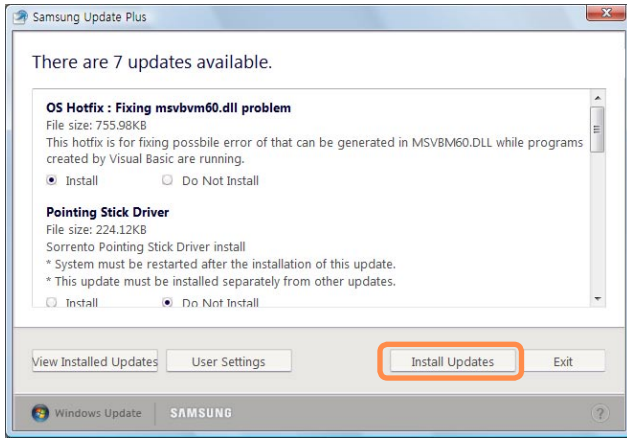


If this is the first time you are running the program, a window will appear asking you if you agree to the agreement in the window. Click Agree to use this software.

- 2 If you click on **Search for new updates**, new updates are searched for.



- 3 If there are available software or driver updates for your computer, the available updates will be listed. Select the required updates from the list and click on **Install Updates** to start the update.



### Automatic update items display

By default, your computer is configured to automatically search for updates. If there is a new update available, this is displayed in the notification area. Click the balloon help icon in the notification area. Here you will be able to find the latest available updates.



### Updates that must be installed separately.

If you select **Install** for an update item that must be installed separately, a message appears informing you of this. Follow the instruction message to correctly install it.

# Play AVStation

Play AVStation is an integrated multimedia program that enables users to enjoy music, photographs, video, movies, etc. using a single program.

This section describes the basic usage of Play AVStation.

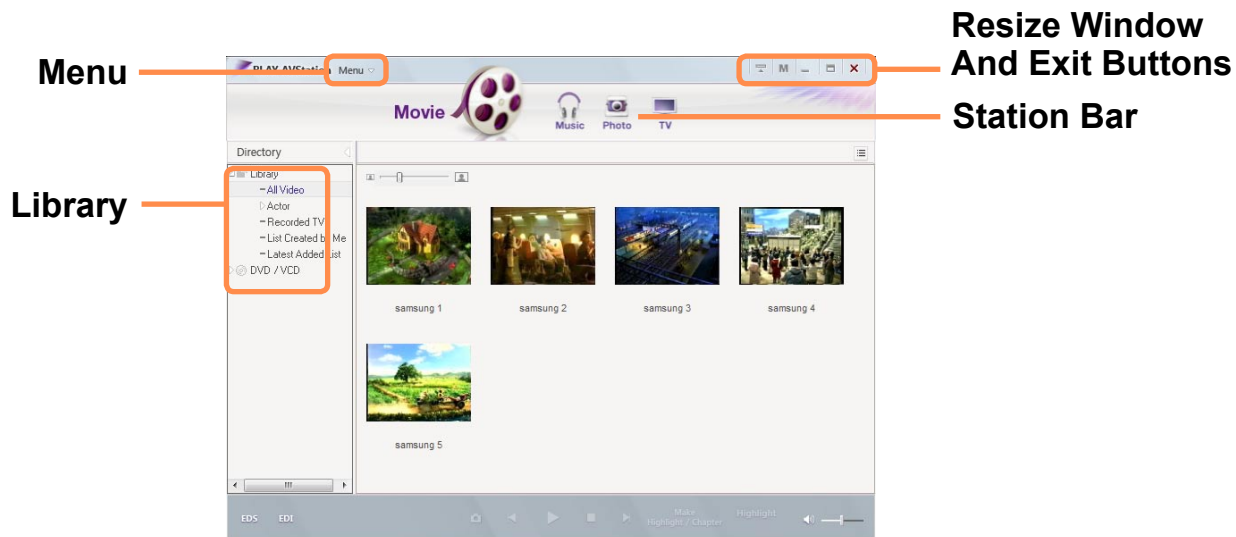


- The screens used in this manual may differ from actual screens according to the program version.
- For detailed usage, refer to the program help.
- TV Station is only available for systems supporting the TV function. This computer is not supported.
- To play an audio CD or DVD, you have to connect an external ODD. Use the description below provided that an external ODD is connected.

## Launching and Screen Layouts

To launch the program, click **Start > All Programs > Samsung > Play AVStation**.

Alternatively, double-click the Play AVStation icon() on the Desktop.



## Movie

You can play a video (movie) file or a DVD/VCD title.

## Music

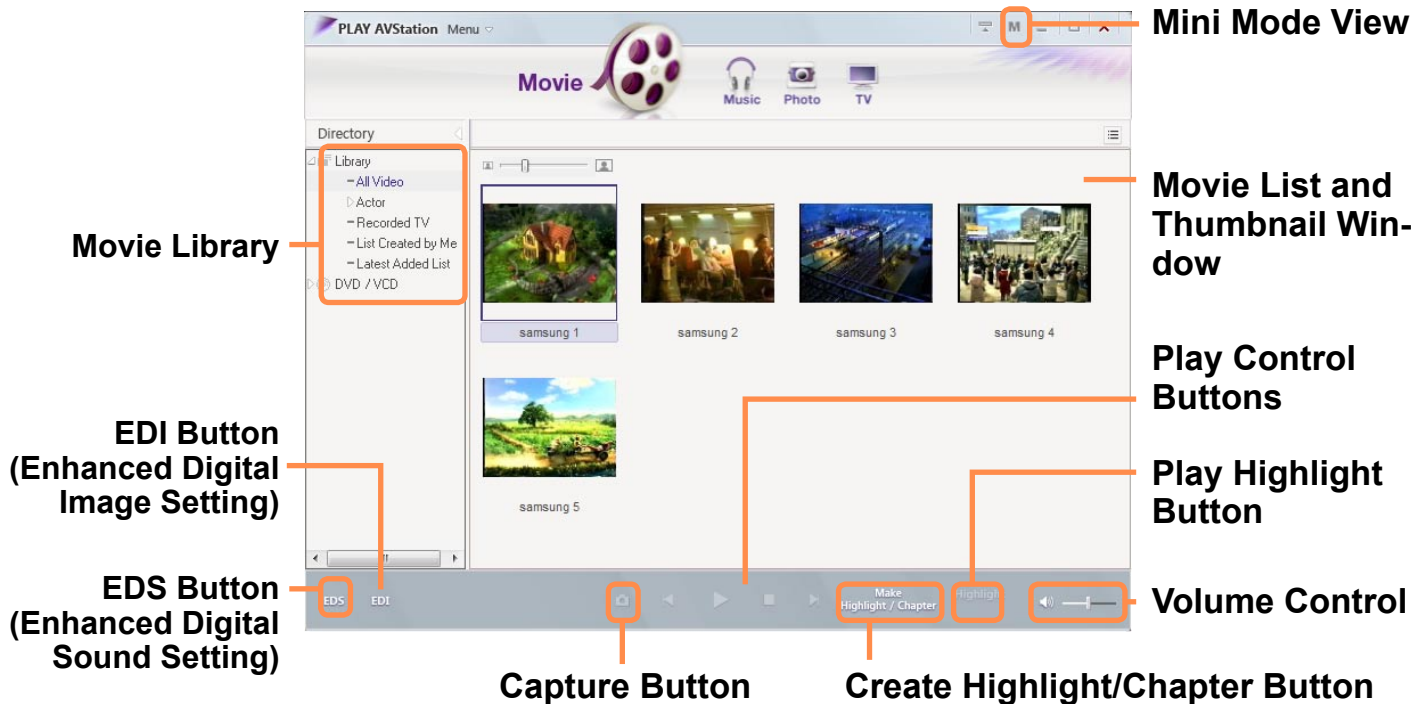
You can play a music file or an audio CD.

## Photo

You can view or edit a photograph (image), and also view the photographs in a Slide-Show.


## Movie Station

Launch Play AVStation and click on **Movie** on the Station Bar.





### ■ What is EDI (Enhanced Digital Image)?

EDI (Enhanced Digital Image) is visual quality enhancement technology developed by Samsung Electronics. You can view clearer and sharper images by enabling the EDI function when watching TV or playing a movie on Play AVStation. To enable the EDI function, click the EDI (  ) button at the bottom of the TV or Movie Station.

 Some TV tuner and graphics cards are not supported by EDI.

### ■ What is EDS (Enhanced Digital Sound)?

EDS (Enhanced Digital Sound) is sound quality enhancement technology developed by Samsung Electronics. You can listen to clearer sound if you enable the EDS function when playing music or movie on Play AVStation.

To enable the EDS function, click the EDS (  ) button at the bottom of Music or Movie Station.

- The EDI and EDS functions are not provided for some models.

## Playing a Movie File

---

The procedures to play a movie file registered to the MOVIE Library are described below.

For the procedures to register files to the Library, refer to  p.128.

**1** Move to **Movie Station** and double-click **All Video** in the left menu pane.

**2** Double-click a movie file.  
The file is played.



### ■ Playing a Video File not Registered to the Library


Click **Menu > File > Open File**, select a movie file to be played and click **Open**. The selected file is automatically registered to the Library and played.

### ■ Playing a Video File in Full Screen

1. Double-click on the current playback screen.
2. The movie is played in full screen.

In full screen, to view the movie at the default size, double-click on the current playback screen again.

### ■ Capturing the Video Screen

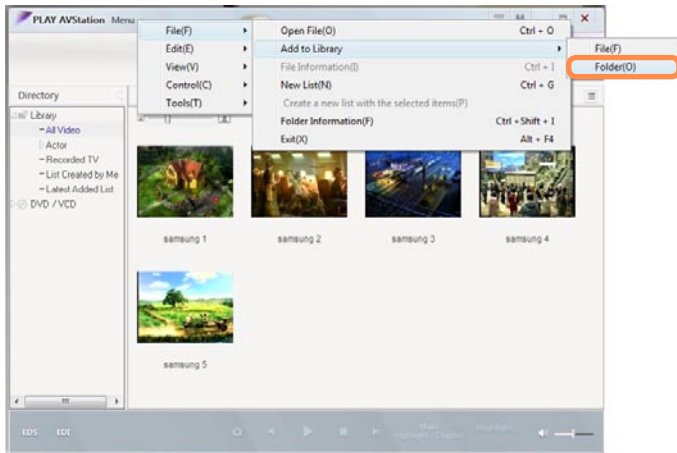
Click on **Capture Current Screen** () below the You can view captured images in the **Photo Station > Captured Images** folder. Captured images are saved in the **C:\Samsung\Play AVStation\Data\Capture**. You can change the captured image folder by selecting **Menu > Tools > Options > Capture**.

## Adding Videos to the Library

The Movie Library is a library with movie files to be used by Movie Station. The procedures to add movie files saved on the computer to the Library are described below.

You can add files or folders. As an example, the procedures to add folders are described below.

- 1 Select **Menu > File > Add to Library > Folder**.



- 2 Select a target folder and select **Video Files** option in the **Target File Type** field.
- 3 The movie files found in the selected folder are added to the Library.

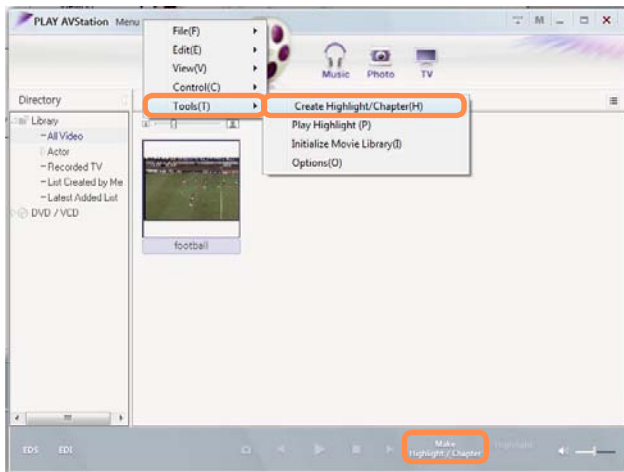


The movie files used in Play AVStation are automatically added to the Library.

## Highlight / Chapter Function

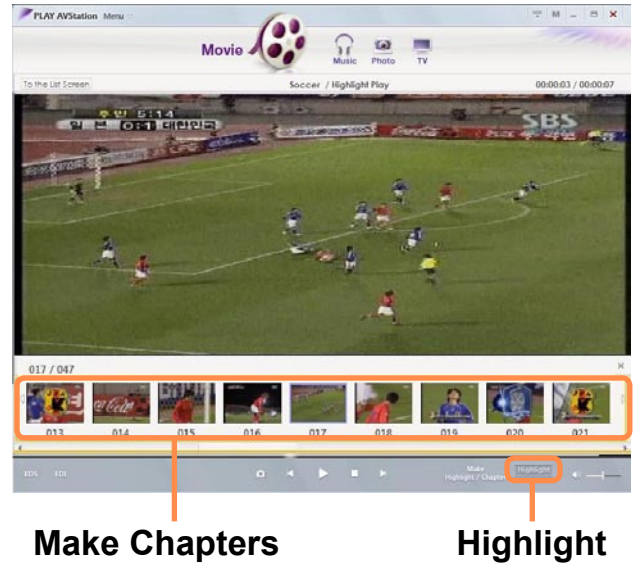
Using the Highlight function, you can watch a highlighted part of a movie such as a sports or news item, etc. Using the Chapter function, you can create chapters for a movie and play the movie from any of the chapters.

- 1 Select a movie and click **Make Highlight/Chapter** at the bottom of the window.



- 2 Select the movie type (Sports, News, Other).  
A Highlight / Chapter is created.

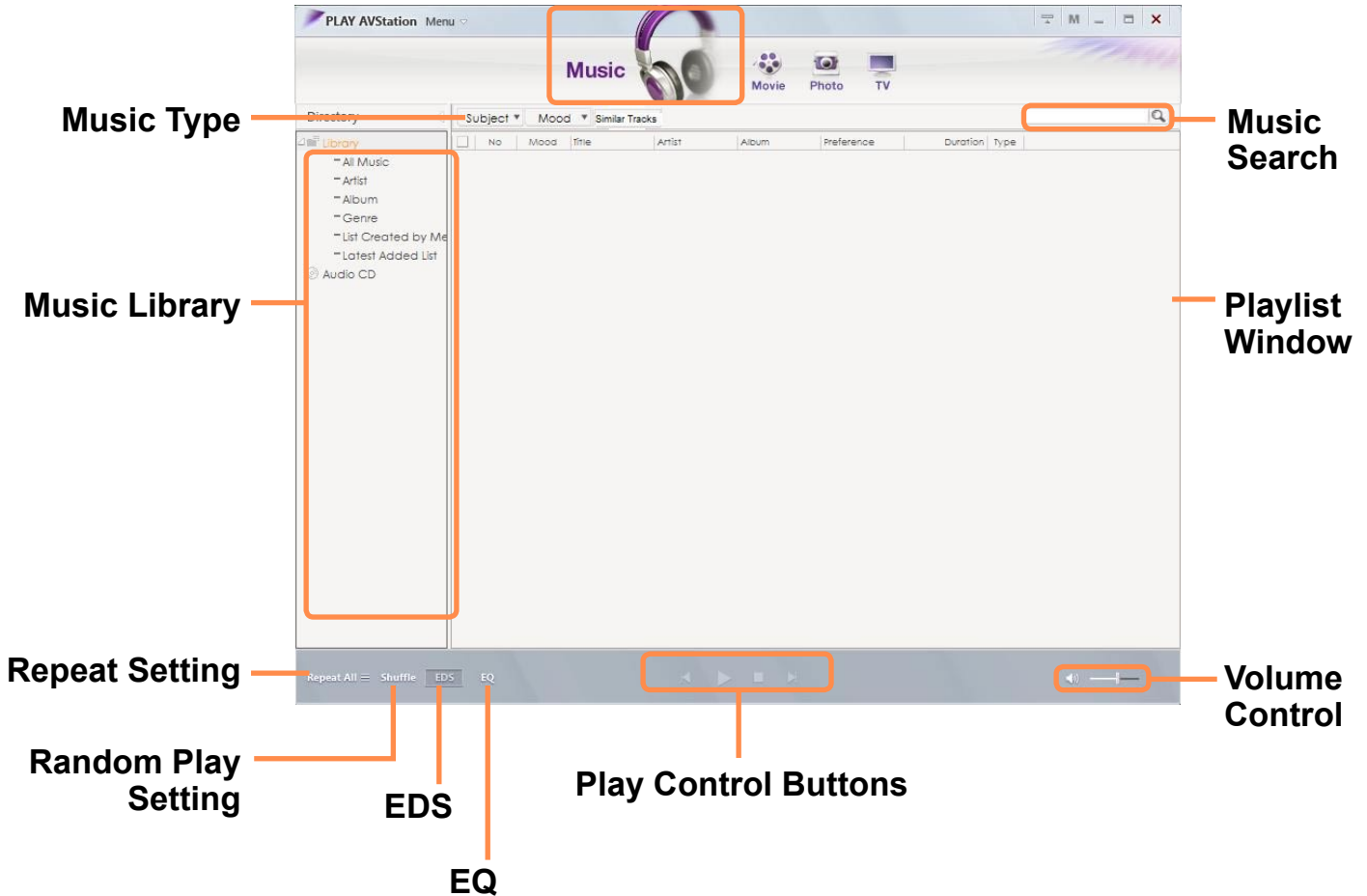
- 3 To watch a highlight, double-click a file made and click the **Highlight** icon at the bottom right of the current movie file.



- 4 The highlight is played. If you click on a Chapter thumbnail, the corresponding Chapter is played.

# Music Station

Launch Play AVStation and click **Music** on the Station Bar.



## Playing an Audio CD

The procedures to play an audio CD are described below.



To use it, you need to connect an external-type ODD.

**1** Insert an audio CD into the CD drive.

**2** If the AutoPlay window appears, select **Play audio CD using Samsung PLAY AVStation**.



**3** The CD is played.



If a CD is already inserted in the CD/DVD drive, select **CD** in the **Audio CD** folder of the Library and double-click the title. The CD is played.

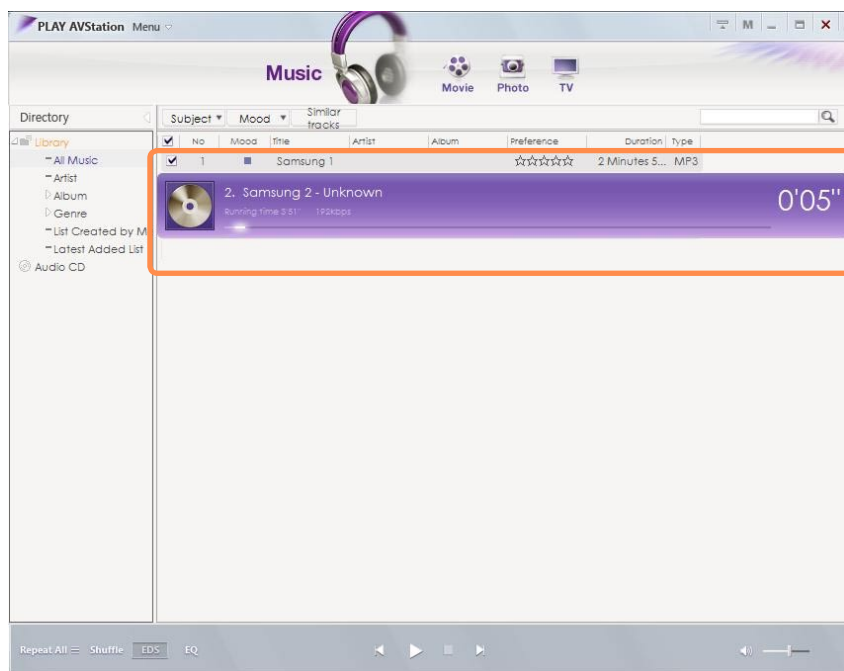
## Playing a Music File

If a music file is registered to the Music Library, you can easily play the music file. For the procedures to register tracks to the Library, refer to [☰ p.133](#).

**1** Move to **Music Station** and double-click on **All Music**.

**2** Double-click a music file.

The file is added to the playlist and played.



### Play a Track not registered to the Library

Click **Menu > File > Open File**, select a music file to be played and click Open. The selected track is registered to the Library and played.

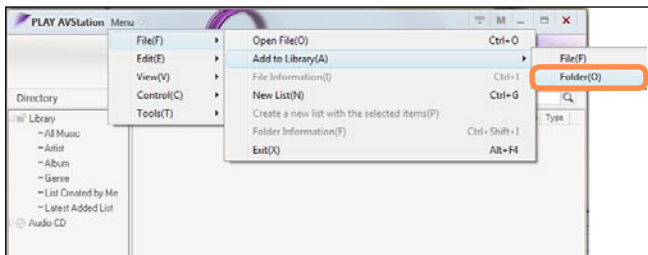
## Adding Music Files to the Library

The Music Library is a library with music files used by Music Station. The procedures to add music files saved on the computer to the Library are described below.

You can add files, folders.

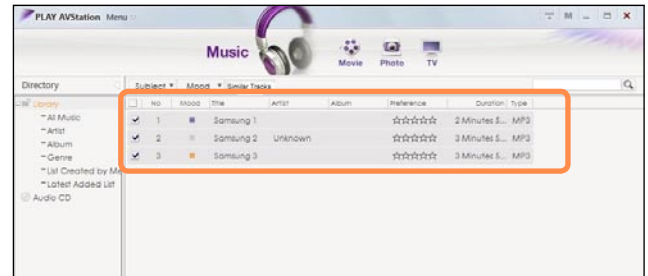
As an example, the procedures to add a folder are described below.

### 1 Select Menu > File > Add to Library > Folder.



### 2 Select a target folder and select the Audio File option in the Target File Type.

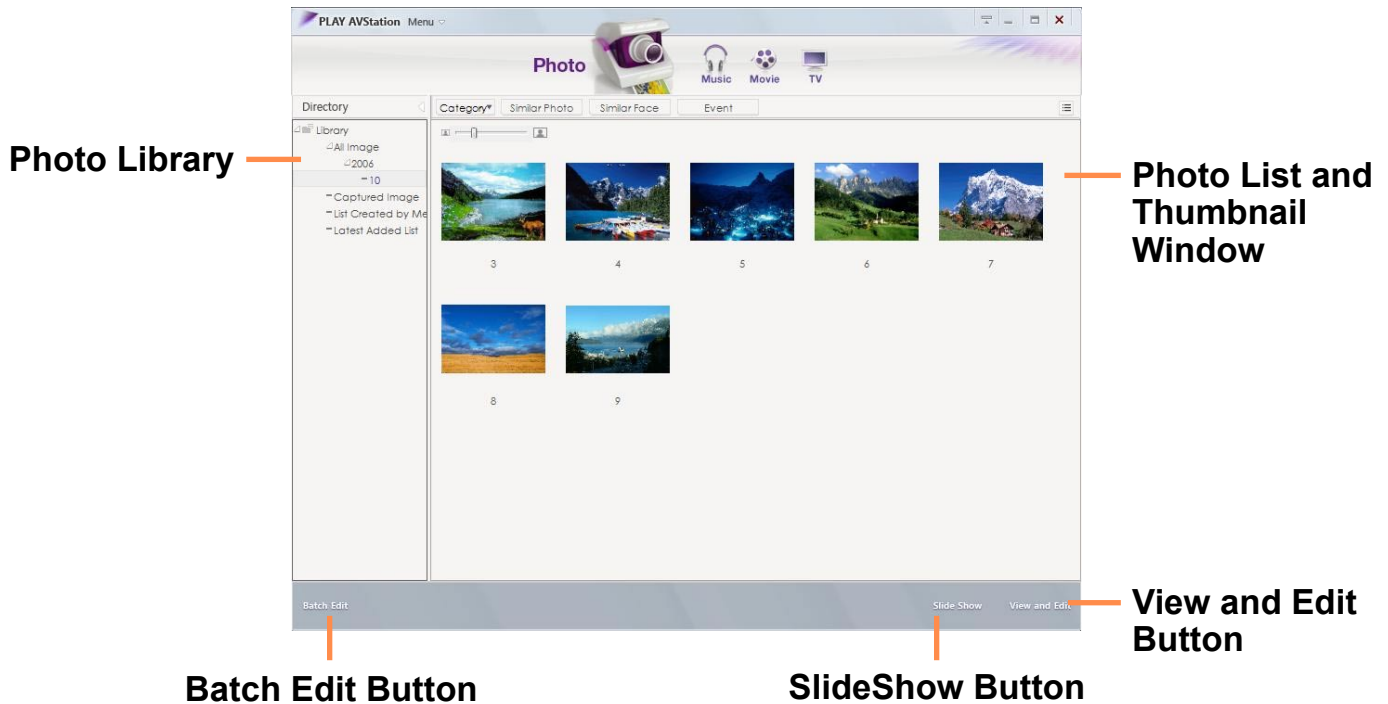
### 3 The music files found in the selected folder are added to the Library. The music files are registered.



The tracks played in Play AVStation are automatically added to the Library.


# Photo Station

Launch Play AVStation and click on **Photo** on the Station Bar.



## Viewing an Image

The procedures to view images registered to the Photo Library individually and via a SlideShow are described below.

For the procedures to register image files to the Library, refer to  p.137.

- 1 Move to **Photo Station** and double-click on **All Images**.
- 2 Double-click on an image. The selected image is displayed in the Preview screen. Press the left and right arrow keys to navigate through the images.

- 3 Click on **To The list Screen** to return to the list.



### ■ Viewing an image not registered to the Library

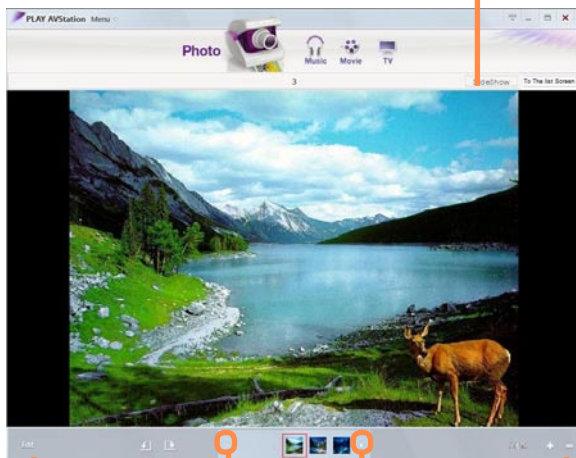
Click **Menu > File > Open File**, select an image file to view, and click **Open**.

The selected image file is registered to the Library and displayed in the Preview window.

### ■ Viewing images using the SlideShow function

Click the **SlideShow** button at the bottom of the Photo Station.

### Slide Show



Edit Image

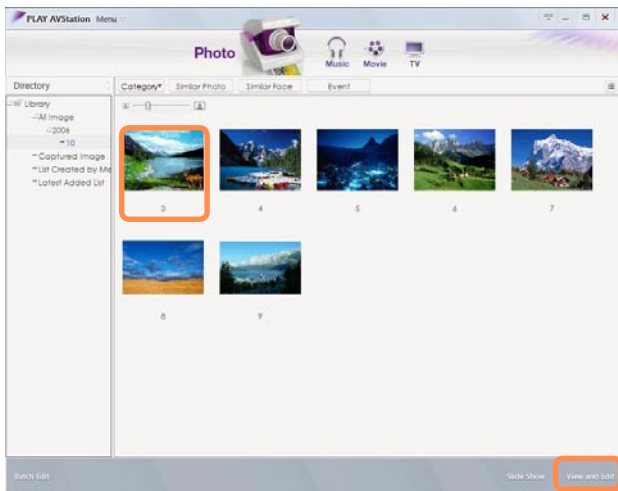
Left and Right  
Arrows

Zoom  
Control

## Editing an Image

You can change the shape of an image, edit an image or apply special effects to an image. The image editing functions are described below.

- 1 Move to **Photo Station** and double-click on **All Images**.
- 2 Click on a folder which includes images, and the images in the folder are displayed.
- 3 Double-click on an image or click the **View and Edit** button at the bottom right to switch to the Preview screen.



- 4 If the Preview screen appears, click the **Edit** button at the bottom left. If the image editor screen appears, edit the image using the Edit tools at the bottom of the window.

Click to save the edited image

Click to switch to the Preview screen

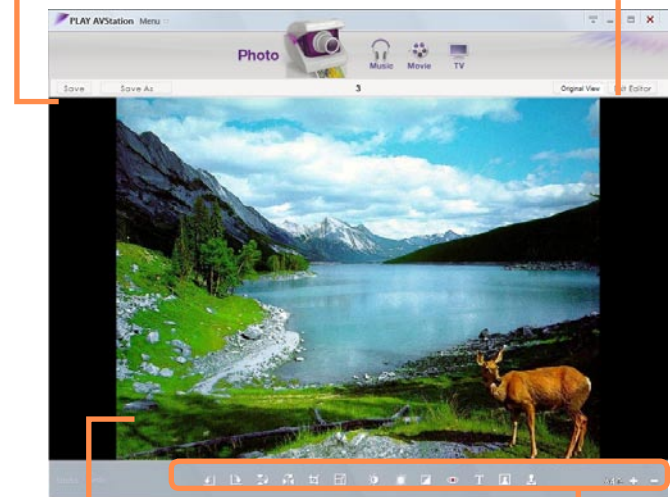


Image Editor Window

Edit Tools



Click on Original View to edit the image comparing it to the original.

- 5 You can save an edited image by clicking the **Save** or **Save As** button.
- 6 Click the **Exit Editor** button to return to the Preview screen.

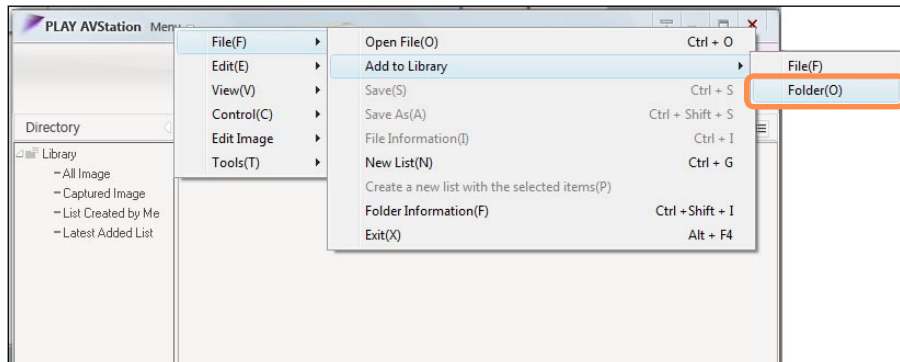
## Adding Images to the Library

The Photo Library is a library with image files to be used by Photo Station. The procedures to add image files saved on the computer to the Library are described below.

You can add files, add folders.

As an example, the procedures to add folders are described below.

### 1 Select **Menu > File > Add to Library > Folder**.



### 2 Select a target folder and select the Image File option in the **Target File Type** field. The image files found in the selected folder are added to the Library.

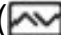


The image files used in AVStation are automatically added to the Library.

# AVStation Now

Using AVStation Now, you can easily and quickly play music, photographs, movies and DVDs when the computer is on/off.

## Start


When the computer is on or off, press the **AV** button (.

The AVStation Now program is launched.



If the **HOLD switch** on the left side of the computer is slid upwards all buttons of the computer are locked and do not work. If AVStation Now is not launched, check the position of the **HOLD switch**.

## Exit

Move the mouse pointer to the top of the screen and click the **Exit** () button to exit AVStation Now.

## Screen Layout

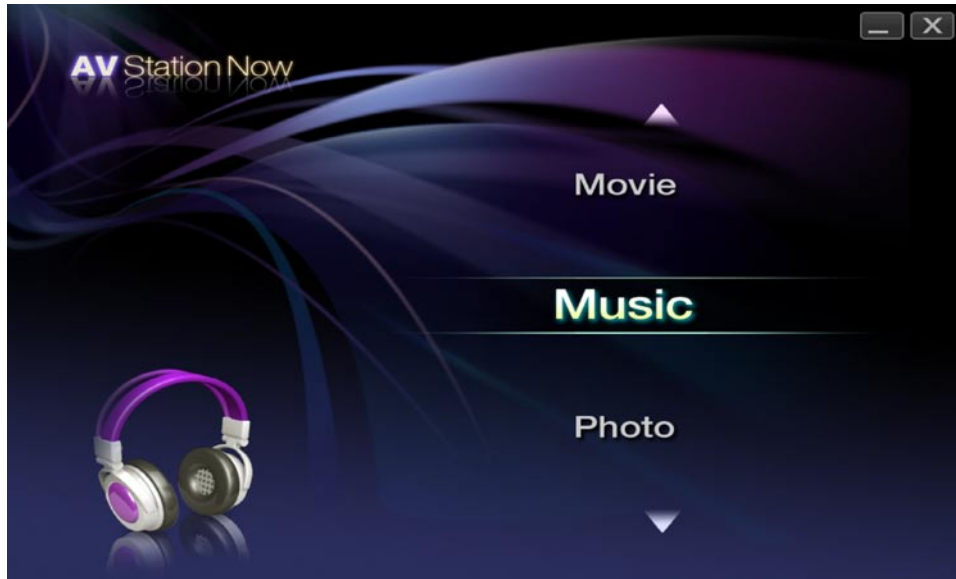
Each menu of AVStation Now is linked to a multimedia program so that you can use the corresponding function.

Click on a menu to run the corresponding program.

For more detailed usage of each program, refer to the online help of each program.



- AVStation Now menus may differ depending on your computer model and some functions are optional and may not be supported by your computer. In addition, if a required program is removed or not installed, the corresponding menu will not appear.
- TV Station is only available for systems supporting the TV function.
- The screens used in this manual may differ from actual screens according to the program version.



**Music:** Play AVStation is launched and you can play a music file or audio CD.

**Movie:** Play AVStation is launched and you can play a movie or DVD title.

**Photo:** Play AVStation is launched and you can view photographs or image files individually or in a SlideShow.

# Play Camera

This computer provides an optional dual camera on the front and back so that users can take pictures or record video.

If your computer model is equipped with the dual camera, you can take pictures or record video using the Play Camera software.



- This function is applied to some models only.
- The program version number in this manual is subject to change and the screen figures and terminologies may differ from the actual ones.
- For more detailed usage procedures, refer to the program Help.

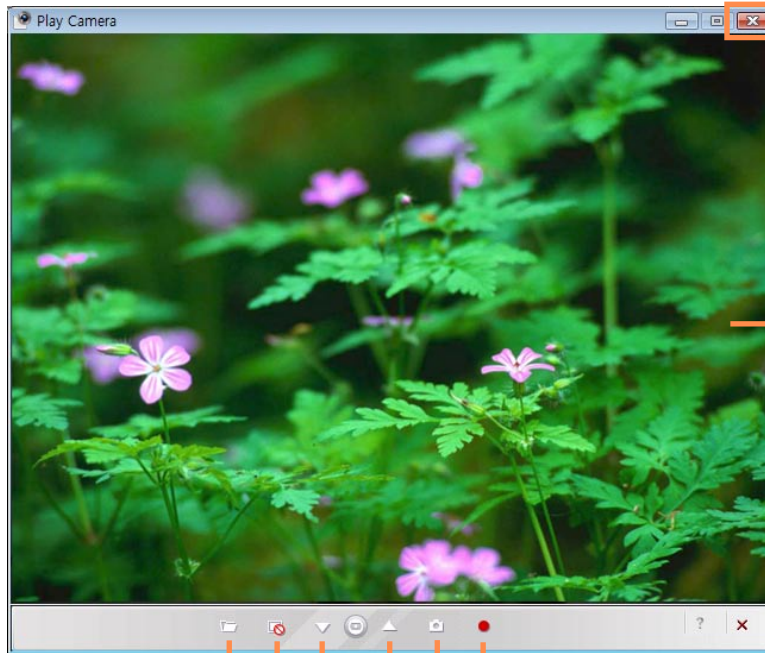
## Precautions when Taking a Picture

---

- Do not take a picture or record video of a person without that person's consent.
- Do not take a picture or record video where photographing is prohibited.
- Do not take a picture or record video where you may violate another person's privacy.

## Photographing Procedures 1.

- 1 Select **Start > All Programs > Samsung > Play Camera > Play Camera.**



Close the Window

Preview Window

**Open Folder:** Opens the folder which includes photos or videos.

**Preview Window:** Shows or hides the Preview window.

**Record:** Records video.

**Capture Screen (Still Picture):** Takes a picture.

**Rear Camera:** Select to use the rear camera.

**Front Camera:** Select to use the front camera.

**2** Press the **Front Camera** (▼) or **Rear Camera** (▲) button, focus on an object and press **Capture Screen** (📷) button. To record video, press the **Record** (●) button.



To stop a video recording, press the **Stop** (■) button. Recording will stop.

**3** Press the **Open Folder** (📁) button to view pictures or recorded videos.

- You can view a photo by double-clicking it.
- Since you cannot view recorded video files using the Play Camera, please use another video player (e.g. Windows Media Player, Cyberlink PowerDVD, etc.) to view video files.

## Photographing Procedures 2.

- 1 When the computer is on, press the **SHUTTER** button at the top.



- 2 When the Play Camera program is launched, press the **Shutter** button again. A picture will be taken.  
To switch the active camera to the rear or front camera, press the **Front Camera** (▼) or **Rear Camera** (▲) in the Play Camera screen and press the **Shutter** button.  
To record video, click the Record (●) button of the Play Camera program.
- 3 Press the **Open Folder** (📁) button to view pictures and recorded videos.

- In the Preview window, right-click to configure the camera settings, the resolution and device settings, the save folder, etc.
- The Play Camera supports up to 1280 x 1024 pixels. Photographs are taken with the resolution selected but the photographs displayed on screen are only 640 x 480 pixels due to restrictions of screen size.

- Video files recorded by the Play Camera are saved with a 320 x 240 pixels resolution.
- Since you cannot view recorded video files using the Play Camera, please use another video player (e.g. Windows Media Player, Cyberlink PowerDVD, etc.) to view video files.
- Switch front/rear camera by Play Camera program while you are video chatting through any other program. You can not use the function of preview, taking pictures, recording video with Play Camera when you are using other program.  
You can not taking pictures while you are video chatting.

# Using OmniPass Program

## (Fingerprint Identification, Integrated Password Authentication)

Using the OmniPass program, you can use the following functions.

### Fingerprint Identification Function

You can register your fingerprint and use it instead of a password.

### Integrated Password Authentication Function

You can use your Windows user account information using the Integrated Password Authentication Function.

If you register your Windows user account(s) information with the OmniPass program, you can login to Windows or onto websites using a single password.



- This function is applied to some models only.
- The program version described in this manual is subject to change and some functions may not be provided due to restrictions in the program.
- This model does not support the function which turns the computer on via a fingerprint.

For more detailed information on the usage procedures, refer to the Help section in the OmniPass program(Fingerprint Identification, Integrated Password Authentication).

## Signing Up

You have to register your fingerprint and Windows user account information as follows to use the fingerprint identification and integrated password authentication functions.



### When using the fingerprint identification sensor

Keep your finger clean and dry when touching the sensor.

Place your finger over the fingerprint sensor and push gently down.

- 1 Select **Start** () > **All Programs** > **Softex** > **OmniPass Control Center**.  
Turn the computer on and click the **Start** button in the **Omnipass** window.

- 2 Click **Run Enrollment Wizard** to start the registration.



- 3 For the integrated password authentication step, complete the following. Enter the Windows user ID and logon password and click the **Next** button. If you do not enter a logon password, the integrated password authentication function will be permitted to anyone; it is therefore recommended entering a logon password.



**Creating a user logon password.**

- 1 Select **Start > Control Panel > User Accounts > Create password for user account.**
- 2 Enter a password in the New Password field, and re-enter the password in the Confirm New Password field. Click **Create Password.** A password has been created.

- 4 To register a fingerprint, click on **AuthenTec Fingerprint Device** and then click the **Next** button.

- 5 The fingerprint registration begins. Select the finger to be registered and click the **Next** button.

- 6 Register the fingerprint by placing your finger over the fingerprint identification sensor and placing it down slowly. Repeat this at least 3 times until the next screen appears automatically.

- 7 Place the registered finger over the fingerprint identification sensor again and click the **Next** button.

- 8 A window appears asking if you want to register an additional fingerprint. Click **No** to proceed to the next window. If you click **Yes**, Steps 4~7 are repeated.

- 9 The authentication device registration complete window appears. Select **'Security authentication device registered. Execute OmniPass registration'** and click the **Next** button.

**10** Proceed with the settings and click the **Next** button.

**11** When the user profile backup instruction window appears, read the contents and click on **Current Backup**.

Specify a path to save the user profile to and save the name. When the backup file password window appears, enter a password and click the **OK** button.



#### What is a user profile backup?

This is a function for backing up the OmniPass information (fingerprint and user account information) registered on a computer so that the information can be used on another computer. For information on how to use a backed up user profile on another computer, refer to the Help section.

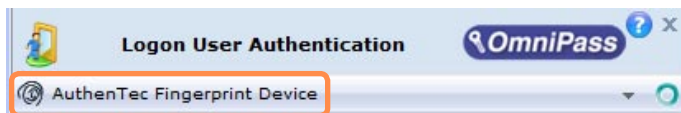
**12** Click **Finish**. Registering information for using the fingerprint identification and integrated password authentication functions has been completed.

## Logging onto Windows

**1** If you turn the computer on after completing the user information registration step, the Logon Authentication window appears.

### (To use the fingerprint identification function)

In the **Logon Authentication** window, select **AuthenTec Fingerprint Driver**, place your finger over the fingerprint identification sensor and place it down slowly.



If your fingerprint is not recognized, the fingerprint is displayed in red in the fingerprint display window. In this case, place your finger over the fingerprint identification sensor again and push it down slowly until the fingerprint is displayed in green.