

## WiFi 5.3GHz Band

Frequency: 5280 MHz; Duty Cycle: 1:1; Room Ambient Temperature: 24.5°C; Liquid Temperature: 24.0°C

Medium parameters used:  $f = 5280.4$  MHz;  $\sigma = 5.255$  S/m;  $\epsilon_r = 48.19$ ;  $\rho = 1000$  kg/m<sup>3</sup>

DASY5 Configuration:

- Area Scan Setting - Find Secondary Maximum Within: 2.0 dB and with a peak SAR value greater than 0.0012W/kg
- Electronics: DAE4 Sn558; Calibrated: 2012/07/19
- Probe: EX3DV4 - SN3554; ConvF(3.57, 3.57, 3.57); Calibrated: 2012/09/27;
- Sensor-Surface: 1.4mm (Mechanical Surface Detection)
- Phantom: ELI 4.0; Type: QDOVA001BA; Serial: 1056

**Bottom/802.11a/Main Ant/CH56/Area Scan (7x9x1):** Measurement grid: dx=10mm, dy=10mm

Maximum value of SAR (measured) = 0.750 W/kg

**Bottom/802.11a/Main Ant/CH56/Zoom Scan (7x7x12)/Cube 0:** Measurement grid: dx=4mm, dy=4mm, dz=2mm

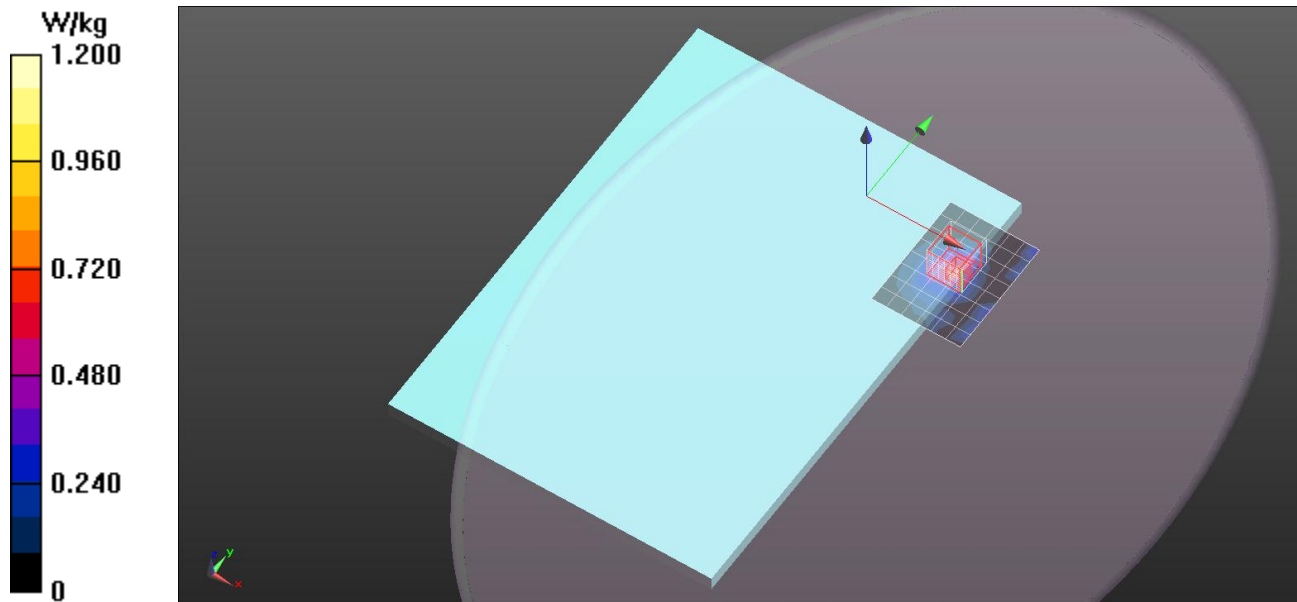
Reference Value = 0 V/m; Power Drift = 0.00 dB

Peak SAR (extrapolated) = 2.07 W/kg

Peak SAR (extrapolated) = 2.07 W/kg

**SAR(1 g) = 0.370 W/kg; SAR(10 g) = 0.160 W/kg**

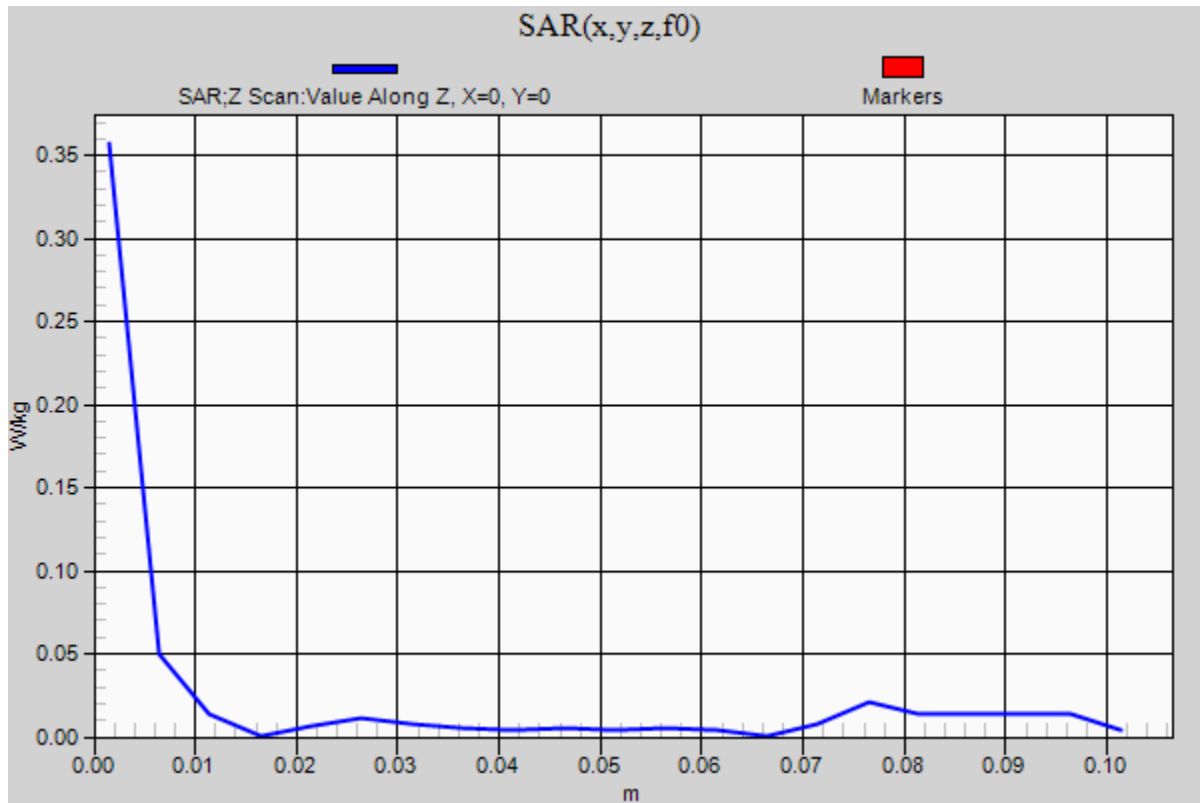
Maximum value of SAR (measured) = 0.811 W/kg



## WiFi 5.3GHz Band

Frequency: 5280 MHz; Duty Cycle: 1:1

**Bottom/802.11a/Main Ant/CH56/Z Scan (1x1x21):** Measurement grid: dx=20mm, dy=20mm, dz=5mm  
Maximum value of SAR (measured) = 0.357 W/kg



## WiFi 5.3GHz Band

Frequency: 5320 MHz; Duty Cycle: 1:1; Room Ambient Temperature: 24.5°C; Liquid Temperature: 24.0°C

Medium parameters used:  $f = 5320$  MHz;  $\sigma = 5.293$  S/m;  $\epsilon_r = 48.089$ ;  $\rho = 1000$  kg/m<sup>3</sup>

DASY5 Configuration:

- Area Scan Setting - Find Secondary Maximum Within: 2.0 dB and with a peak SAR value greater than 0.0012W/kg
- Electronics: DAE4 Sn558; Calibrated: 2012/07/19
- Probe: EX3DV4 - SN3554; ConvF(3.57, 3.57, 3.57); Calibrated: 2012/09/27;
- Sensor-Surface: 1.4mm (Mechanical Surface Detection (Locations From Previous Scan Used)), Sensor-Surface: 1.4mm (Mechanical Surface Detection)
- Phantom: ELI 4.0; Type: QDOVA001BA; Serial: 1056

**Bottom/802.11a/Main Ant/CH64/Area Scan (7x9x1):** Measurement grid: dx=10mm, dy=10mm

Maximum value of SAR (measured) = 0.819 W/kg

**Bottom/802.11a/Main Ant/CH64/Zoom Scan (7x7x12)/Cube 0:** Measurement grid: dx=4mm, dy=4mm, dz=2mm

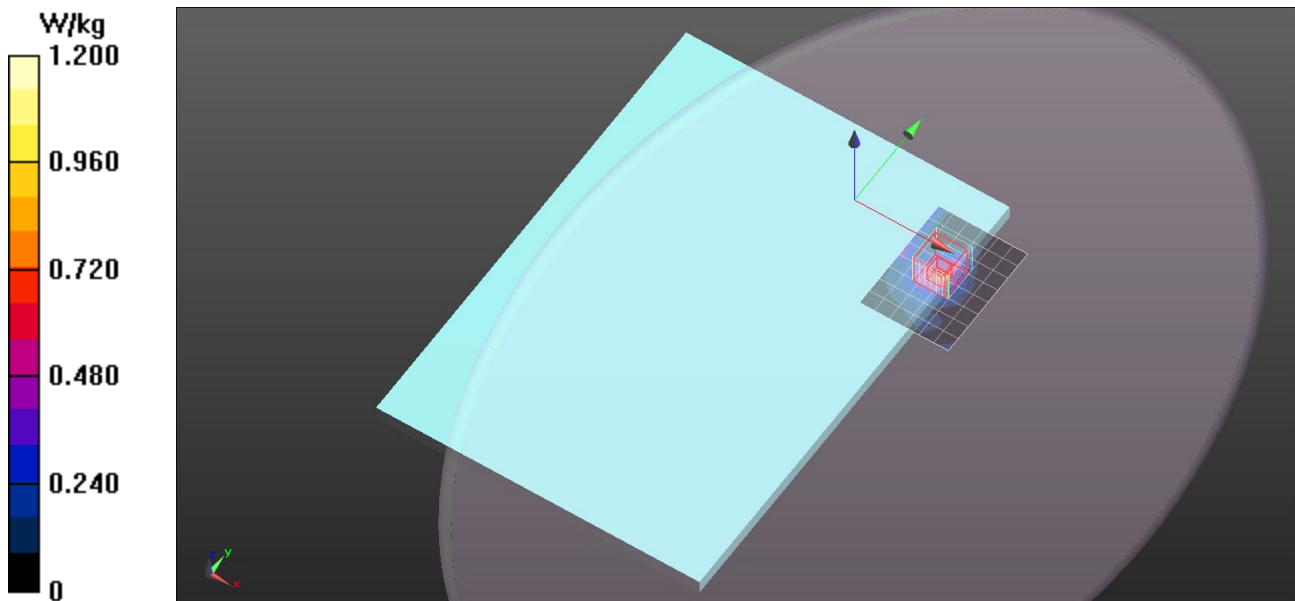
Reference Value = 7.255 V/m; Power Drift = -0.00 dB

Peak SAR (extrapolated) = 1.39 W/kg

Peak SAR (extrapolated) = 1.39 W/kg

**SAR(1 g) = 0.359 W/kg; SAR(10 g) = 0.125 W/kg**

Maximum value of SAR (measured) = 0.923 W/kg



## WiFi 5.3GHz Band

Frequency: 5280 MHz; Duty Cycle: 1:1; Room Ambient Temperature: 24.5°C; Liquid Temperature: 24.0°C

Medium parameters used:  $f = 5280.4 \text{ MHz}$ ;  $\sigma = 5.255 \text{ S/m}$ ;  $\epsilon_r = 48.19$ ;  $\rho = 1000 \text{ kg/m}^3$

DASY5 Configuration:

- Area Scan Setting - Find Secondary Maximum Within: 2.0 dB and with a peak SAR value greater than 0.0012W/kg
- Electronics: DAE4 Sn558; Calibrated: 2012/07/19
- Probe: EX3DV4 - SN3554; ConvF(3.57, 3.57, 3.57); Calibrated: 2012/09/27;
- Sensor-Surface: 1.4mm (Mechanical Surface Detection)
- Phantom: ELI 4.0; Type: QDOVA001BA; Serial: 1056

**Bottom/802.11n HT20/Main+Aux Ant/CH56/Area Scan (8x10x1):** Measurement grid: dx=10mm, dy=10mm

Maximum value of SAR (measured) = 0.842 W/kg

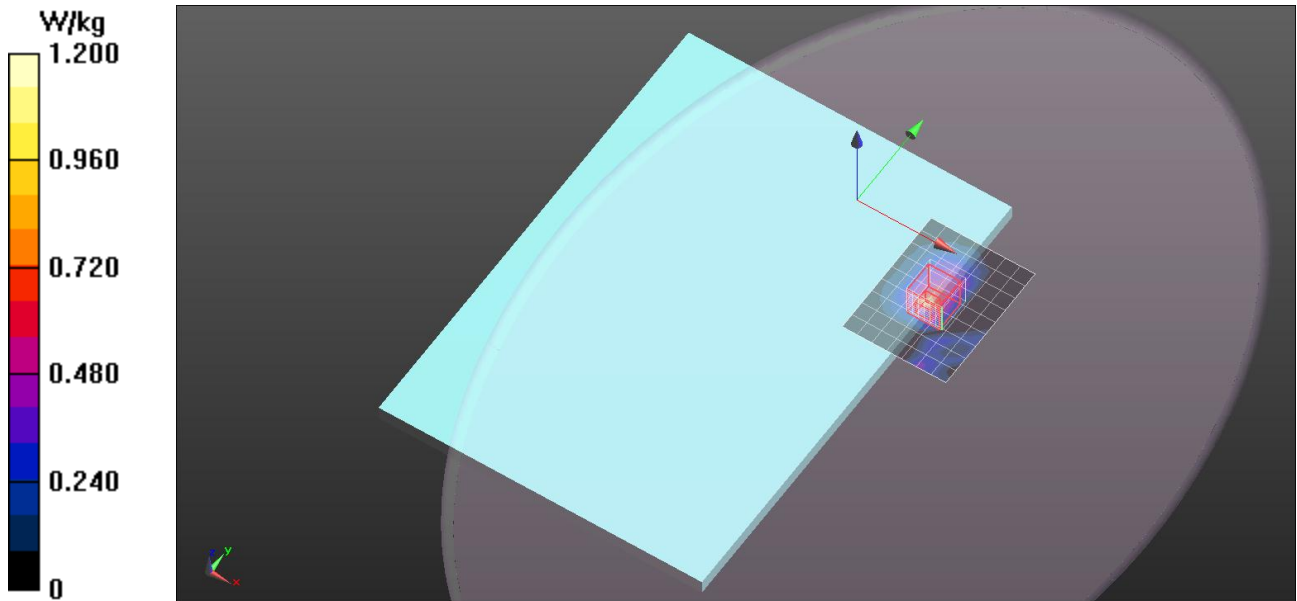
**Bottom/802.11n HT20/Main+Aux Ant/CH56/Zoom Scan (7x7x12)/Cube 0:** Measurement grid: dx=4mm, dy=4mm, dz=2mm

Reference Value = 0 V/m; Power Drift = 0.00 dB

Peak SAR (extrapolated) = 1.95 W/kg

**SAR(1 g) = 0.367 W/kg; SAR(10 g) = 0.117 W/kg**

Maximum value of SAR (measured) = 0.965 W/kg



## WiFi 5.3GHz Band

Frequency: 5320 MHz; Duty Cycle: 1:1; Room Ambient Temperature: 24.5°C; Liquid Temperature: 24.0°C

Medium parameters used:  $f = 5320 \text{ MHz}$ ;  $\sigma = 5.293 \text{ S/m}$ ;  $\epsilon_r = 48.089$ ;  $\rho = 1000 \text{ kg/m}^3$

DASY5 Configuration:

- Area Scan Setting - Find Secondary Maximum Within: 2.0 dB and with a peak SAR value greater than 0.0012W/kg
- Electronics: DAE4 Sn558; Calibrated: 2012/07/19
- Probe: EX3DV4 - SN3554; ConvF(3.57, 3.57, 3.57); Calibrated: 2012/09/27;
- Sensor-Surface: 1.4mm (Mechanical Surface Detection)
- Phantom: ELI 4.0; Type: QDOVA001BA; Serial: 1056

**Bottom/802.11n HT20/Main+Aux Ant/CH64/Area Scan (8x11x1):** Measurement grid: dx=10mm, dy=10mm

Maximum value of SAR (measured) = 0.682 W/kg

**Bottom/802.11n HT20/Main+Aux Ant/CH64/Zoom Scan (7x7x12)/Cube 0:** Measurement grid: dx=4mm, dy=4mm, dz=2mm

Reference Value = 0 V/m; Power Drift = 0.00 dB

Peak SAR (extrapolated) = 3.34 W/kg

**SAR(1 g) = 0.319 W/kg; SAR(10 g) = 0.105 W/kg**

Maximum value of SAR (measured) = 1.14 W/kg

