

WiFi 5.2GHz Band

Frequency: 5180 MHz; Duty Cycle: 1:1; Room Ambient Temperature: 24.5°C; Liquid Temperature: 24.0°C

Medium parameters used (interpolated): $f = 5180$ MHz; $\sigma = 5.127$ S/m; $\epsilon_r = 48.342$; $\rho = 1000$ kg/m³

DASY5 Configuration:

- Area Scan Setting - Find Secondary Maximum Within: 2.0 dB and with a peak SAR value greater than 0.0012W/kg
- Electronics: DAE4 Sn558; Calibrated: 2012/07/19
- Probe: EX3DV4 - SN3554; ConvF(3.72, 3.72, 3.72); Calibrated: 2012/09/27;
- Sensor-Surface: 1.4mm (Mechanical Surface Detection)
- Phantom: ELI 4.0; Type: QDOVA001BA; Serial: 1056

Bottom/802.11a/Main Ant/CH36/Area Scan (7x11x1): Measurement grid: dx=10mm, dy=10mm

[Info: Interpolated medium parameters used for SAR evaluation.](#)

Maximum value of SAR (measured) = 0.367 W/kg

Bottom/802.11a/Main Ant/CH36/Zoom Scan (7x7x12)/Cube 0: Measurement grid: dx=4mm, dy=4mm, dz=2mm

Reference Value = 0 V/m; Power Drift = 0.00 dB

Peak SAR (extrapolated) = 0.570 W/kg

SAR(1 g) = 0.152 W/kg; SAR(10 g) = 0.048 W/kg

[Info: Interpolated medium parameters used for SAR evaluation.](#)

Maximum value of SAR (measured) = 0.570 W/kg

Bottom/802.11a/Main Ant/CH36/Zoom Scan (7x7x12)/Cube 1: Measurement grid: dx=4mm, dy=4mm, dz=2mm

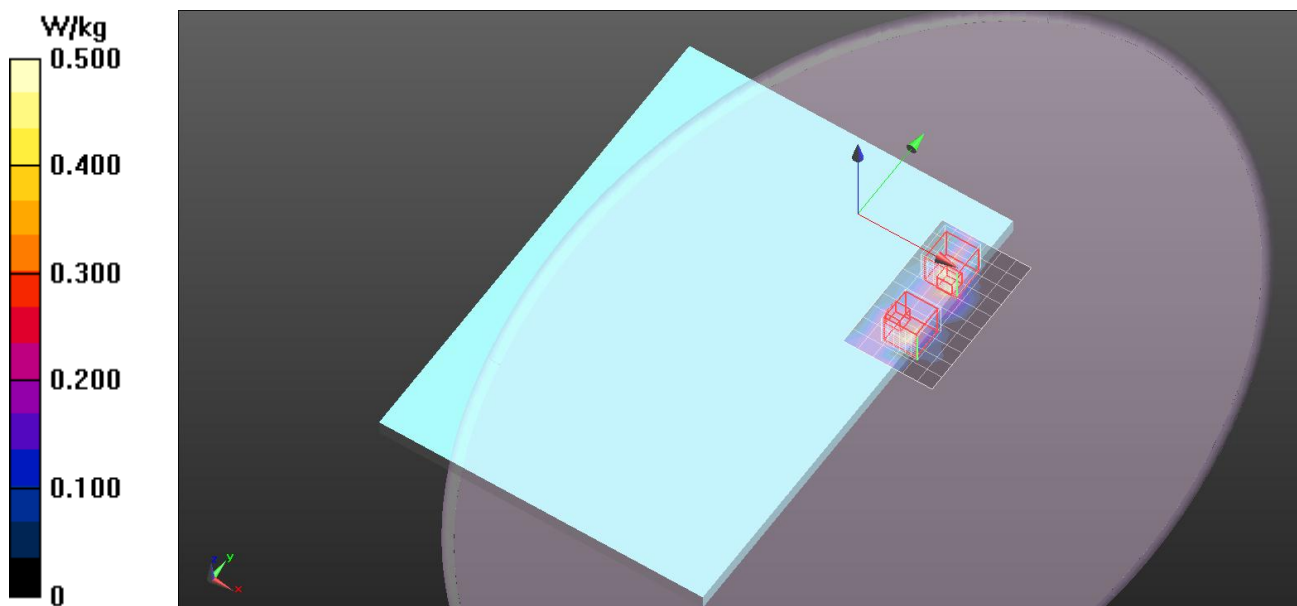
Reference Value = 0 V/m; Power Drift = 0.00 dB

Peak SAR (extrapolated) = 0.966 W/kg

SAR(1 g) = 0.234 W/kg; SAR(10 g) = 0.067 W/kg

[Info: Interpolated medium parameters used for SAR evaluation.](#)

Maximum value of SAR (measured) = 0.613 W/kg



WiFi 5.2GHz Band

Frequency: 5240 MHz; Duty Cycle: 1:1; Room Ambient Temperature: 24.5°C; Liquid Temperature: 24.0°C

Medium parameters used: $f = 5240.8$ MHz; $\sigma = 5.197$ S/m; $\epsilon_r = 48.226$; $\rho = 1000$ kg/m³

DASY5 Configuration:

- Area Scan Setting - Find Secondary Maximum Within: 2.0 dB and with a peak SAR value greater than 0.0012W/kg
- Electronics: DAE4 Sn558; Calibrated: 2012/07/19
- Probe: EX3DV4 - SN3554; ConvF(3.72, 3.72, 3.72); Calibrated: 2012/09/27;
- Sensor-Surface: 1.4mm (Mechanical Surface Detection (Locations From Previous Scan Used)), Sensor-Surface: 1.4mm (Mechanical Surface Detection)
- Phantom: ELI 4.0; Type: QDOVA001BA; Serial: 1056

Bottom/802.11a/Main Ant/CH48/Area Scan (7x11x1): Measurement grid: dx=10mm, dy=10mm

Maximum value of SAR (measured) = 0.653 W/kg

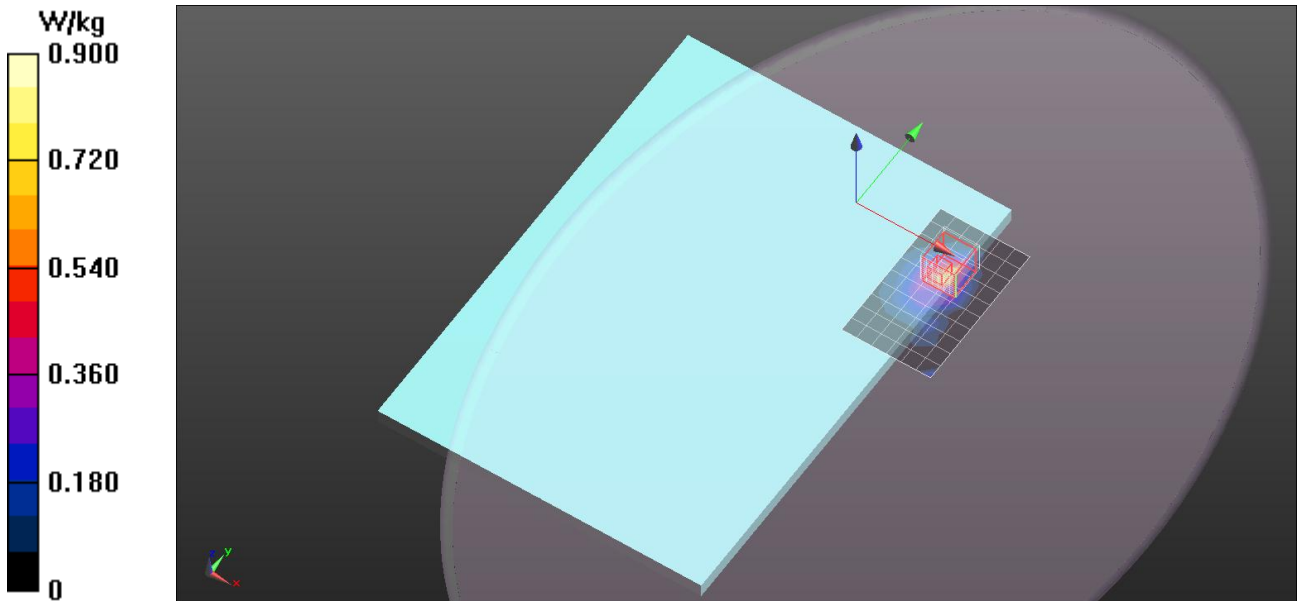
Bottom/802.11a/Main Ant/CH48/Zoom Scan (7x7x12)/Cube 0: Measurement grid: dx=4mm, dy=4mm, dz=2mm

Reference Value = 0 V/m; Power Drift = 0.00 dB

Peak SAR (extrapolated) = 1.23 W/kg

SAR(1 g) = 0.335 W/kg; SAR(10 g) = 0.166 W/kg

Maximum value of SAR (measured) = 0.834 W/kg



WiFi 5.2GHz Band

Frequency: 5180 MHz; Duty Cycle: 1:1; Room Ambient Temperature: 24.5°C; Liquid Temperature: 24.0°C

Medium parameters used (interpolated): $f = 5180$ MHz; $\sigma = 5.127$ S/m; $\epsilon_r = 48.342$; $\rho = 1000$ kg/m³

DASY5 Configuration:

- Area Scan Setting - Find Secondary Maximum Within: 2.0 dB and with a peak SAR value greater than 0.0012W/kg
- Electronics: DAE4 Sn558; Calibrated: 2012/07/19
- Probe: EX3DV4 - SN3554; ConvF(3.72, 3.72, 3.72); Calibrated: 2012/09/27;
- Sensor-Surface: 1.4mm (Mechanical Surface Detection)
- Phantom: ELI 4.0; Type: QDOVA001BA; Serial: 1056

Bottom/802.11n HT20/Main+Aux Ant/CH36/Area Scan (9x33x1): Measurement grid: dx=10mm, dy=10mm

[Info: Interpolated medium parameters used for SAR evaluation.](#)

Maximum value of SAR (measured) = 0.813 W/kg

Bottom/802.11n HT20/Main+Aux Ant/CH36/Zoom Scan (7x7x12)/Cube 0: Measurement grid: dx=4mm, dy=4mm, dz=2mm

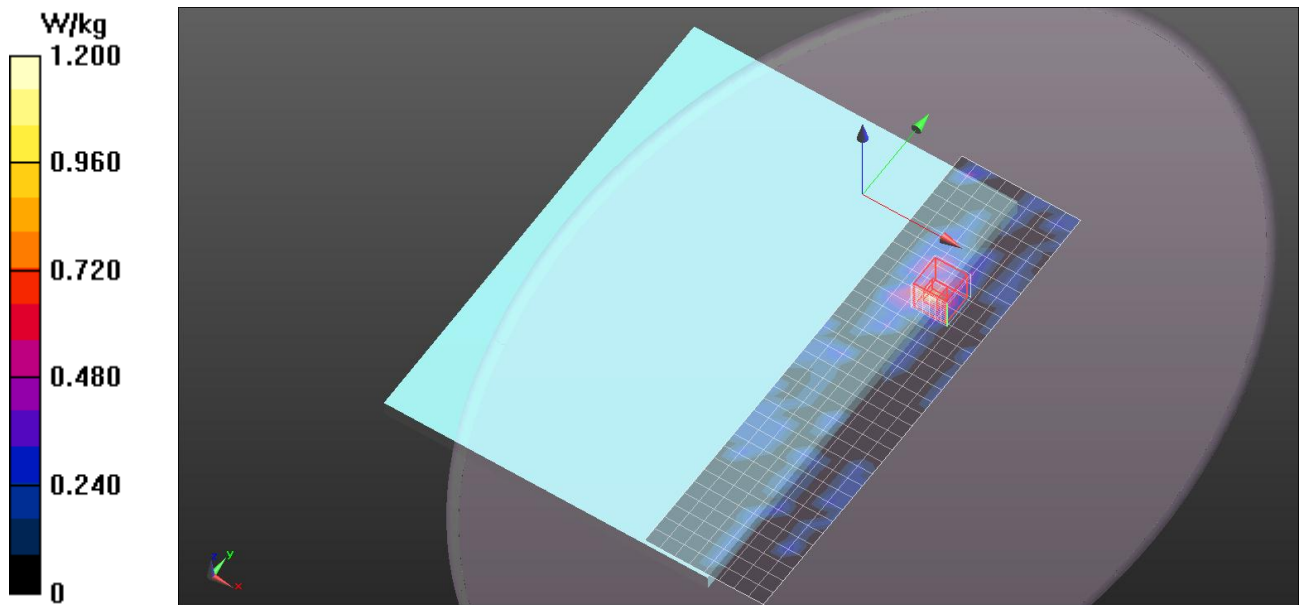
Reference Value = 0 V/m; Power Drift = 0.00 dB

Peak SAR (extrapolated) = 1.82 W/kg

SAR(1 g) = 0.464 W/kg; SAR(10 g) = 0.139 W/kg

[Info: Interpolated medium parameters used for SAR evaluation.](#)

Maximum value of SAR (measured) = 1.03 W/kg



WiFi 5.2GHz Band

Frequency: 5240 MHz; Duty Cycle: 1:1; Room Ambient Temperature: 24.5°C; Liquid Temperature: 24.0°C

Medium parameters used: $f = 5240.8$ MHz; $\sigma = 5.197$ S/m; $\epsilon_r = 48.226$; $\rho = 1000$ kg/m³

DASY5 Configuration:

- Area Scan Setting - Find Secondary Maximum Within: 2.0 dB and with a peak SAR value greater than 0.0012W/kg
- Electronics: DAE4 Sn558; Calibrated: 2012/07/19
- Probe: EX3DV4 - SN3554; ConvF(3.72, 3.72, 3.72); Calibrated: 2012/09/27;
- Sensor-Surface: 1.4mm (Mechanical Surface Detection)
- Phantom: ELI 4.0; Type: QDOVA001BA; Serial: 1056

Bottom/802.11n HT20/Main+Aux Ant/CH48/Area Scan (8x10x1): Measurement grid: dx=10mm, dy=10mm

Maximum value of SAR (measured) = 0.954 W/kg

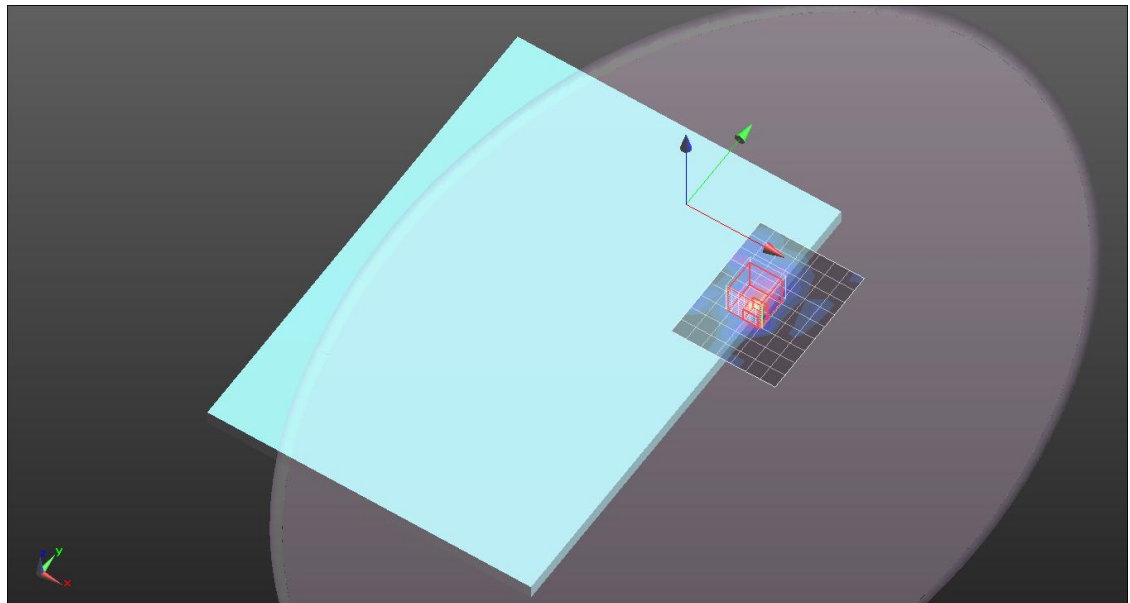
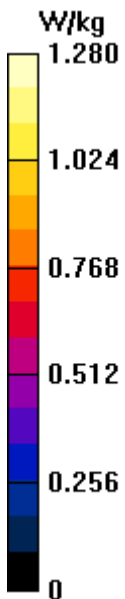
Bottom/802.11n HT20/Main+Aux Ant/CH48/Zoom Scan (7x7x12)/Cube 0: Measurement grid: dx=4mm, dy=4mm, dz=2mm

Reference Value = 0 V/m; Power Drift = 0.00 dB

Peak SAR (extrapolated) = 2.23 W/kg

SAR(1 g) = 0.487 W/kg; SAR(10 g) = 0.180 W/kg

Maximum value of SAR (measured) = 1.28 W/kg



WiFi 5.2GHz Band

Frequency: 5240 MHz; Duty Cycle: 1:1

Bottom/802.11n HT20/Main+Aux Ant/CH48/Z Scan (1x1x21): Measurement grid: dx=20mm, dy=20mm, dz=5mm

Maximum value of SAR (measured) = 0.959 W/kg

