



ELECTRONICS

Samsung Confidential

# Power Density Simulation Report

## FCC Part #

FCC ID : A3LNP545XLA

Revision : A

Date : May 21th, 2021

New Computing H/W R&D Group

Go Choi

## 1. Simulation methodology for Power Density (PD)

### 1.1 Simulation tool

#### 1.1.1 Tool description

For the simulation approach to calculating power density (PD) evaluation for mobile phone with mmWave antenna modules, ANSYS Electromagnetics suite version 20.1 (HFSS) is used. ANSYS HFSS is one of several commercial tools for 3D full-wave electromagnetic simulation used for antenna and RF structure design of high frequency component. ANSYS Electromagnetics suite version 20.1 (HFSS) is implemented based on Finite Element Method (FEM), which operates in the frequency domain.

#### 1.1.2 Mesh and Convergence criteria

To solve the PD analysis using FEM, volume area containing simulated objects should be subdivided into electrically small parts that are called finite elements as the unknown functions. To subdivide system, the adaptive mesh technique in ANSYS Electromagnetics suite version 20.1 (HFSS) is used. ANSYS Electromagnetics suite version 20.1 (HFSS) starts to refine the initial mesh based on wavelength and calculate the error to iterative process for adaptive mesh refinement. The determination parameter of the number of iteration in ANSYS Electromagnetics suite version 20.1 (HFSS) is defined as convergence criteria, delta S, and the iterative adaptive mesh process repeats until the delta S is met. In ANSYS Electromagnetics suite version 20.1 (HFSS), the accuracy of converged results depends on the delta S. Figure 1 is an example of final adaptive mesh of the device (cross-section of top view).

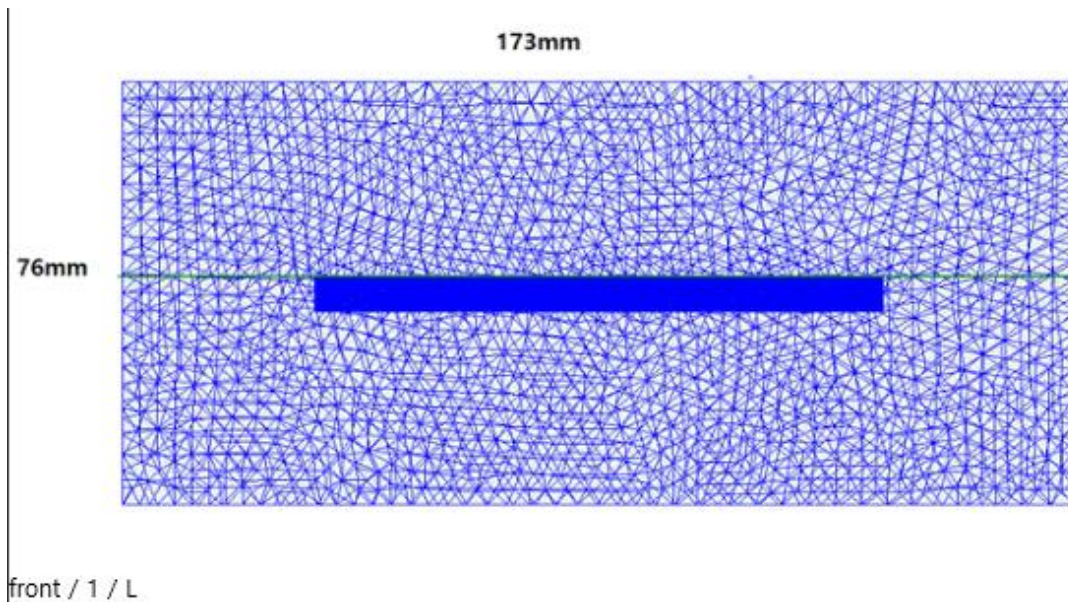


Figure 1.1 Front Module Example of the adaptive mesh technique

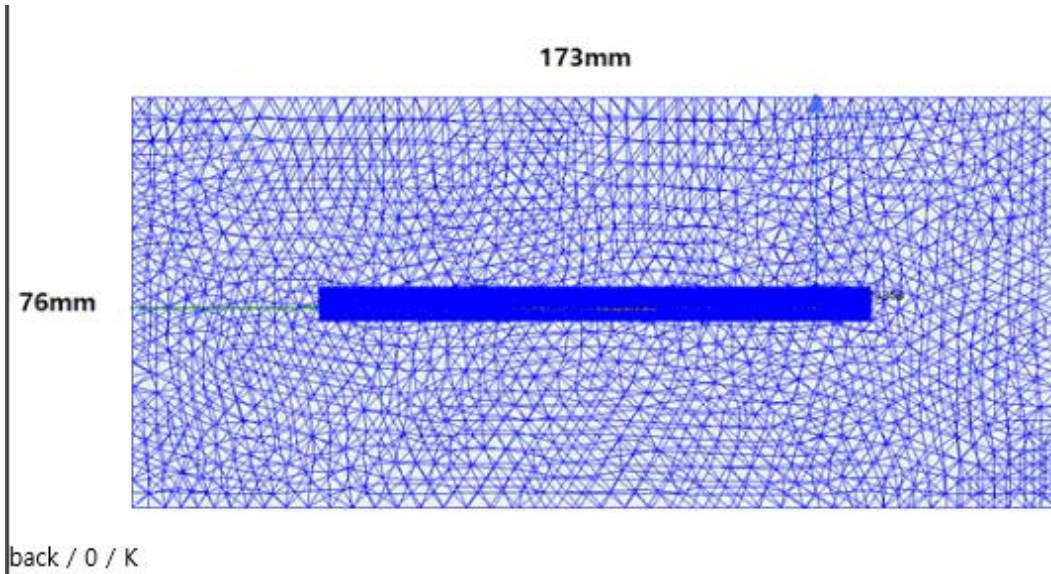


Figure 2.2 Back Module Example of the adaptive mesh technique

### 1.1.3 Power density calculation

After solving 3D full-wave electromagnetic simulation, various kinds of physical quantities can be obtained. To calculate PD evaluation, two physical quantities, an electric field ( $\vec{E}$ ) and a magnetic field ( $\vec{H}$ ) are needed. The actual consumption power can be expressed as the real term of the Poynting vector ( $\vec{S}$ ) from the cross product of  $\vec{E}$  and complex conjugation of  $\vec{H}$  as shown below:

$$\langle \vec{S} \rangle = \text{Re} \left( \frac{1}{2} \vec{E} \times \vec{H}^* \right)$$

$\langle \vec{S} \rangle$  can be expressed as point power density based on a peak value of each spatial point on mesh grids, and obtained directly from ANSYS Electromagnetics suite version 20.1 (HFSS).

From the point power density  $\langle \vec{S} \rangle$ , the spatial-averaged power density ( $PD_{av}$ ) on an evaluated area (A) can be derived as shown below:

$$PD_{av} = \frac{1}{A} \int_A \langle \vec{S} \rangle \cdot ds = \frac{1}{2A_{av}} \iint_{A_{av}} \| \text{Re}\{E \times H^*\} \| dA$$

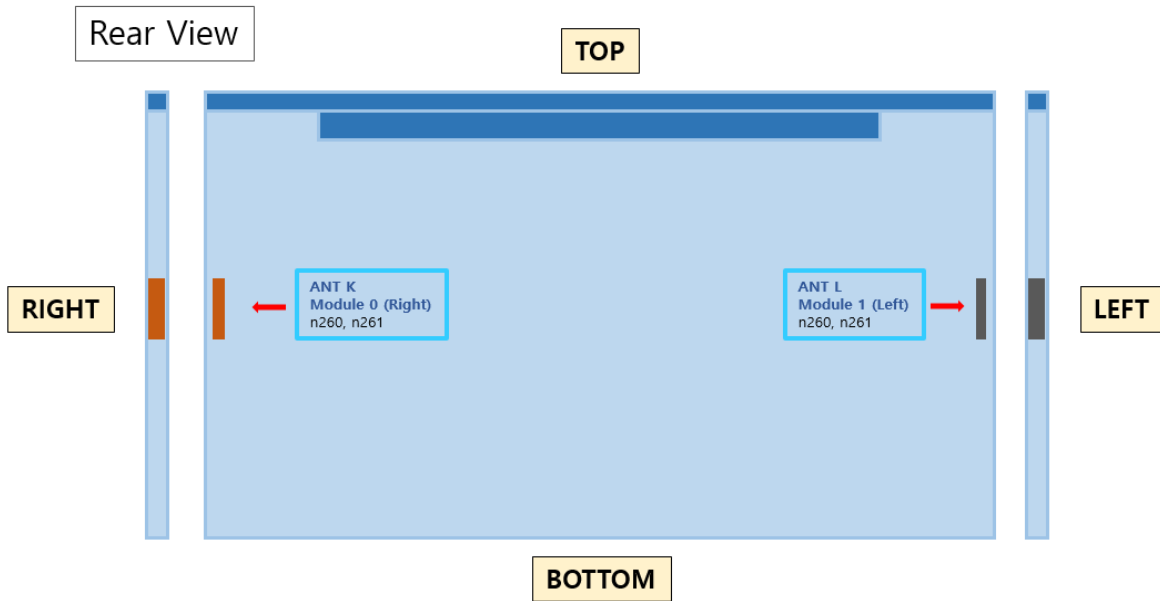
, where the spatial-averaged power density ( $PD_{av}$ ) is total power density value considering on x, y and z components of point power density  $\langle \vec{S} \rangle$  and the evaluated area (A) is 4cm<sup>2</sup>.

## 1.2 Simulation setup

### 1.2.1 3D modeling

Figure 2 shows the simulation model which is mounted three mmWave antenna modules. The simulation modeling includes most of the entire structure of device itself such as PCB, metal frame, battery, cables, and legacy antennas as well as mmWave antenna modules called as Ant K and Ant L. Ant K is placed on the front side and antennas are facing the front side, and Ant L is placed on the front side and antennas are facing the back side of the device.

Figure 3 Simulation model which is mounted two mmWave antenna modules



### 1.2.2 PD evaluation planes

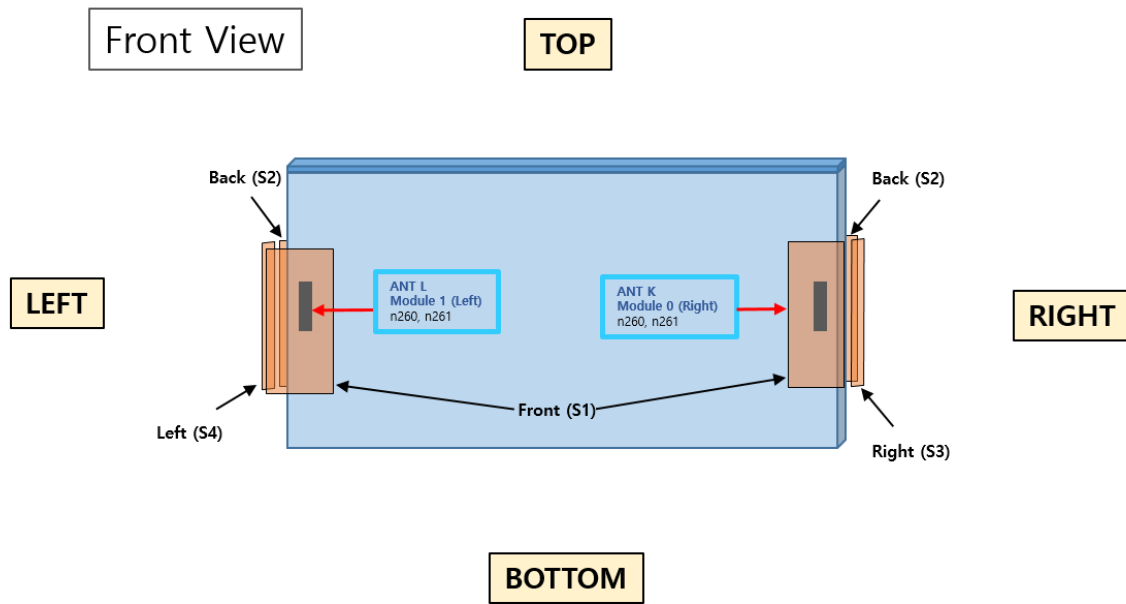
Table 1 shows the PD evaluation planes for each mmWave antenna module and Figure 3 shows the PD evaluation planes and truncation area of the simulation model to find worst case of beamforming cases. In Ant K, L cases, three PD evaluation planes Front, Back, and Right side are set up. Ant K, L are placed at the middle of the device and the upper and lower side is excluded from the worst case because the distance are more than 10 lambda at 28GHz and 39 GHz.

Please note that the “right” and “left” edge of mentioned in this report are defined from the perspective of looking at the device from the front side.

Table 1. PD evaluation planes

	Front	Rear	Right	Left	Top	Bottom
	S1	S2	S3	S4	S5	S6
ANT K (module 0)	O	O	O	X	X	X
ANT L (module 1)	O	O	X	O	X	X

Figure 4. PD evaluation planes



### 1.2.3 Boundary condition

To simulate electromagnetic tool based on FEM, the boundary condition allows electromagnetic waves to be electrically open at the boundary and radiated far away without reflection. ANSYS Electromagnetics suite version 20.1 (HFSS) can support the absorbing boundary condition (ABC) for radiation boundary and make normally a quarter wave length from the radiating structure. In this report, to cover all beamforming cases of mmWave antenna modules, the three wavelength spacing from the device is used.

### 1.2.4 Source excitation condition

The number of antenna ports of ANT K, and ANT L for source excitation consists of 24, 16, and 16, respectively. The dipole array antennas consist of 4 antenna elements and each element uses two ports as a source excitation. All antenna ports of ANT K and ANT L are for patch array antennas.

After finishing 3D full wave electromagnetic simulation of modeling structure, the magnitude and phase information can be loaded for each port by using “Edit Sources” function in ANSYS Electromagnetics suite (HFSS). Since ANSYS Electromagnetics suite (HFSS) uses FEM solver based on frequency domain analysis method, the input source for the port excitation applies sinusoidal waveform for each frequency.

### 1.2.5 Condition of simulation completion

The simulation completion condition of ANSYS Electromagnetics suite (HFSS) is defined as delta S. The ANSYS Electromagnetics suite (HFSS) calculates the S-parameter for the mesh conditions of each step and determines whether to proceed with the operation of the next step by comparing the difference between the S-parameters in the previous step. A difference between the previous step and the current step of S-parameter is expressed as delta S, and the delta S generally sets 0.02. The simulation result of



ELECTRONICS

Samsung Confidential

this report is the result of setting delta S to 0.02.

## 2. Simulation verification

### 2.1 Spatial-averaged power density

As mentioned in the previous chapter, the Poynting vector ( $\vec{S}$ ) can be obtained through cross product of an electric field ( $\vec{E}$ ) and complex conjugate of a magnetic field ( $\vec{H}$ ). The real term of the Poynting vector can be described as the point power density or peak power density. Using the point power density, the spatial-averaged power density can be obtained by the integral of  $4 \text{ cm}^2$  at  $2.5 \text{ mm}$  intervals of the point power density result. Figure 6 shows examples of the distribution plot of point power density and the averaged power density.

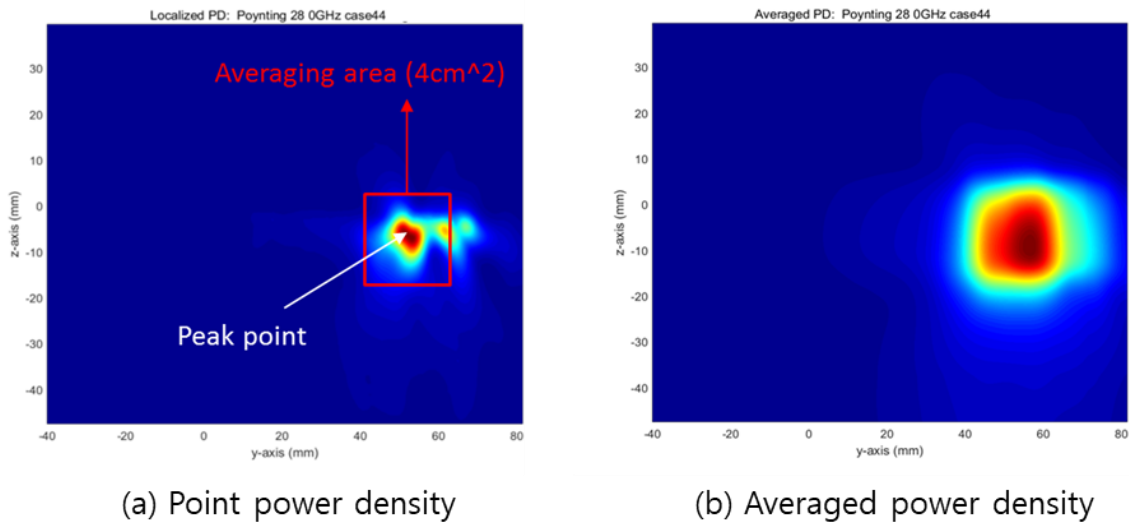


Figure 5. Power density distribution (Example)

### 2.2 Comparison between simulation and measurement

In this section, the simulated-power density distributions and measured-power density distributions are compared to each mmWave antenna.

Based on comparison of power density distributions, simulated power density and measured power density have a good correlation. The discrepancy in amplitude between simulated  $4 \text{ cm}^2$  averaged power density and measured  $4 \text{ cm}^2$  averaged power density is considered as housing influence and used in determining input power limit for each beam for RF exposure compliance (see RF Exposure Part 0 Report).

The input powers per each active port are listed below for both Simulation and Measurement validation and power density characterization. For Simulation, these values were entered directly into HFSS model. For measurement, FTM S/W was used to input these values for each active port also.

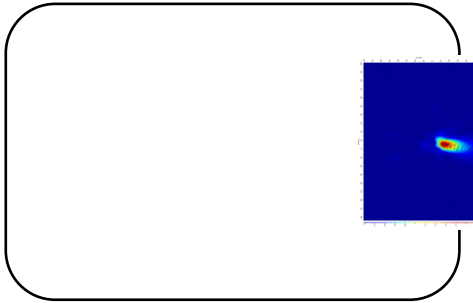
Mode/Band	Antenna	Input Power (dBm)	
		SISO	MIMO
n261	K Patch	6.0	6.0
	L Patch	6.0	6.0
n260	K Patch	6.0	6.0
	L Patch	6.0	6.0

\* The below simulation and measurement result were performed at 2mm evaluation distance and 28GHz / 38.5GHz. The *input.power.limit* was determined based on below results in RF Exposure Part 0 Report.

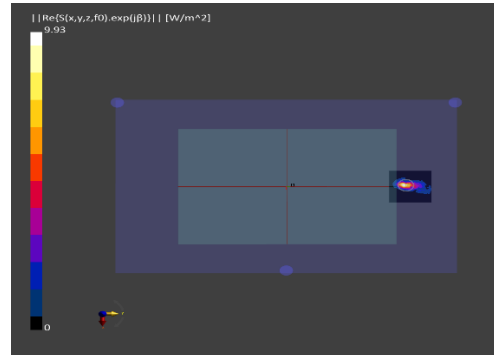
Band	Beam ID	Antenna	Surface	Channel	4cm2 avg. PD	
					Meas.	Sim
n261	29	Module.0	S1 (Front)	Mid	0.442	0.92
	150			Mid	0.116	0.34
	29		S2 (rear)	Mid	0.416	0.69
	157			Mid	0.473	0.96
	19		S3 (Right)	Mid	0.727	1.18
	148			Mid	0.576	0.91
	Module.1	24	S1 (Front)	Mid	0.283	1.09
		161		Mid	0.219	0.35
		25	S2 (rear)	Mid	0.281	0.54
		162		Mid	0.415	0.87
		24	S4 (Left)	Mid	0.669	1.33
		153		Mid	0.535	0.84
n260	21	Module.0	S1 (Front)	Mid	0.269	0.63
	157			Mid	0.337	0.68
	30		S2 (rear)	Mid	0.193	0.44
	151			Mid	0.364	0.76
	23		S3 (Right)	Mid	0.612	0.82
	151			Mid	0.378	0.75
	Module.1	34	S1 (Front)	Mid	0.370	0.74
		155		Mid	0.381	0.68
		25	S2 (rear)	Mid	0.456	0.47
		163		Mid	0.406	0.71
		34	S4 (Left)	Mid	0.859	0.82
		155		Mid	0.420	0.73



- n261 ANT K-Patch: Mid Channel, Beam ID 29, Front (S1)

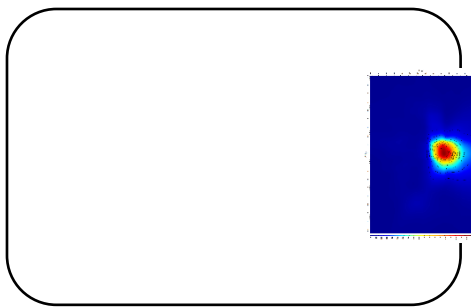


(a) simulation Front view

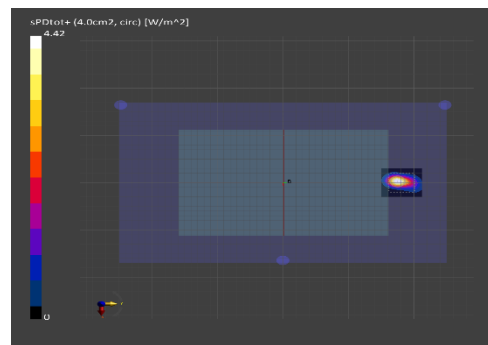


(b) Measurement Front view

ANT K-Patch: Mid Channel, Point power density



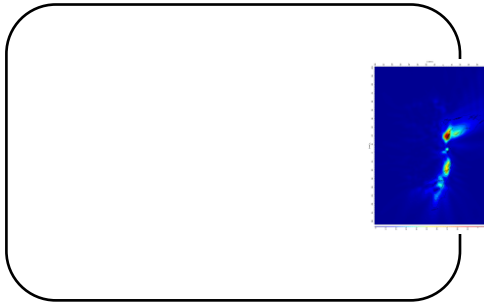
(a) simulation Front view



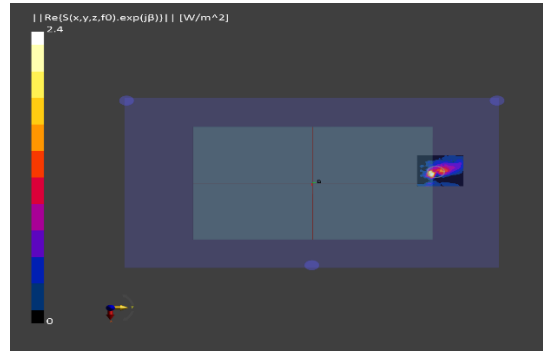
(b) Measurement Front view

ANT K-Patch: Mid Channel, 4cm<sup>2</sup> averaged power density

- n261 ANT K-Patch: Mid Channel, Beam ID 150, Front (S1)

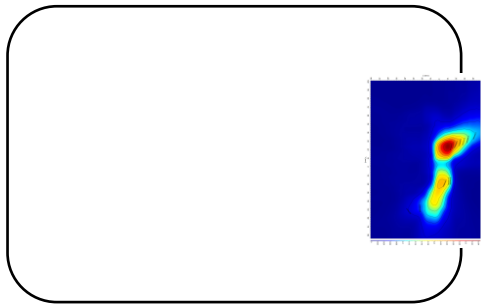


(a) simulation Front view

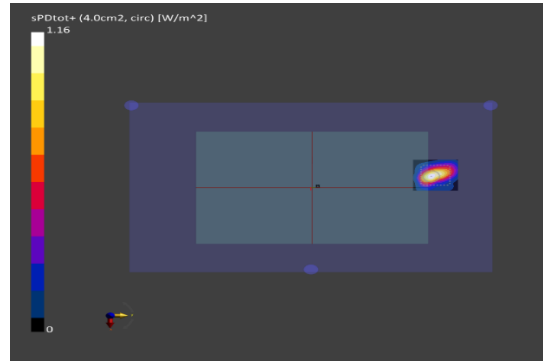


(b) Measurement Front view

ANT K-Patch: Mid Channel, Point power density



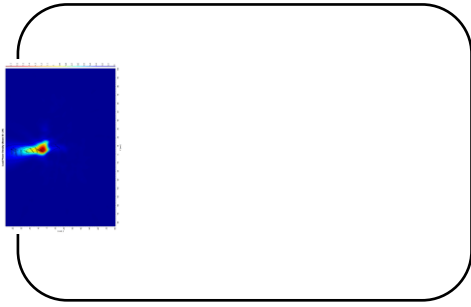
(a) simulation Front view



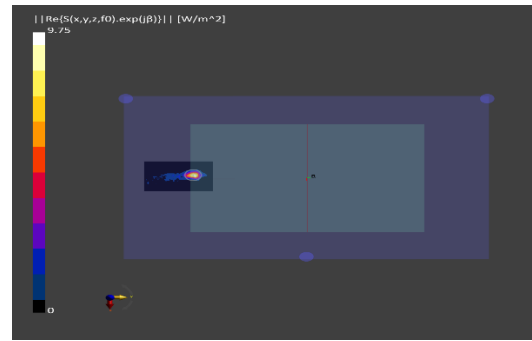
(b) Measurement Front view

ANT K-Patch: Mid Channel, 4cm<sup>2</sup> averaged power density

- n261 ANT K-Patch: Mid Channel, Beam ID 29, Back (S2)

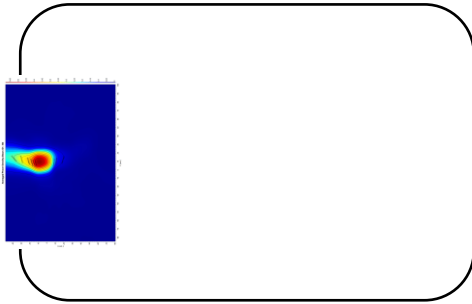


(a) simulation Rear view

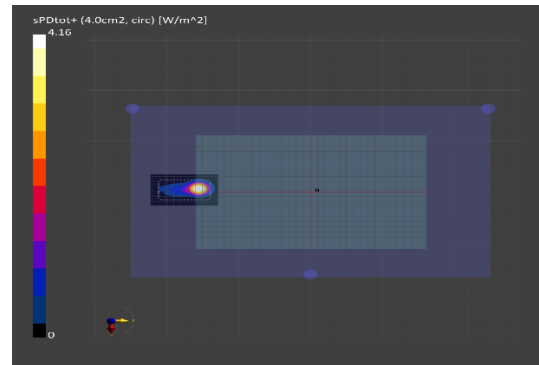


(b) Measurement Rear view

ANT K-Patch: Mid Channel, Point power density



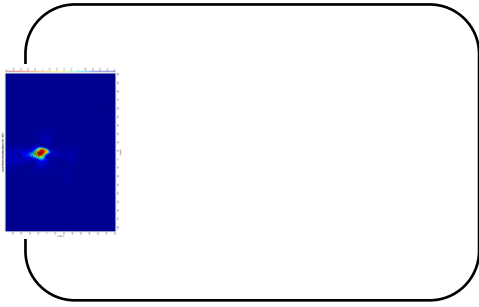
(a) simulation Rear view



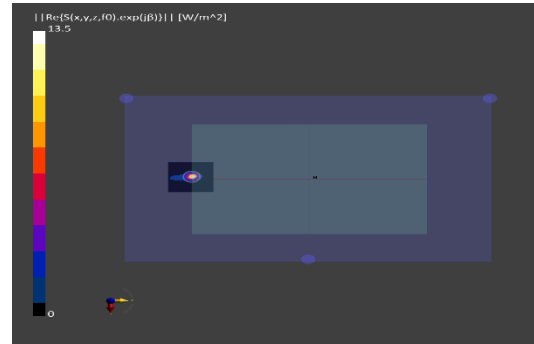
(b) Measurement Rear view

ANT K-Patch: Mid Channel, 4cm<sup>2</sup> averaged power density

- n261 ANT K-Patch: Mid Channel, Beam ID 157, Back (S2)

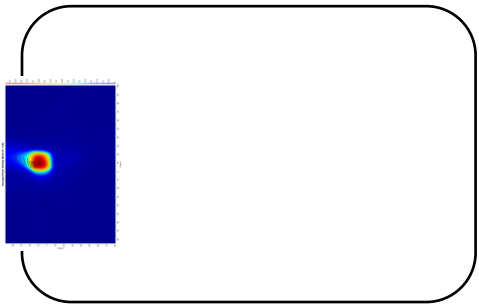


(a) simulation Rear view

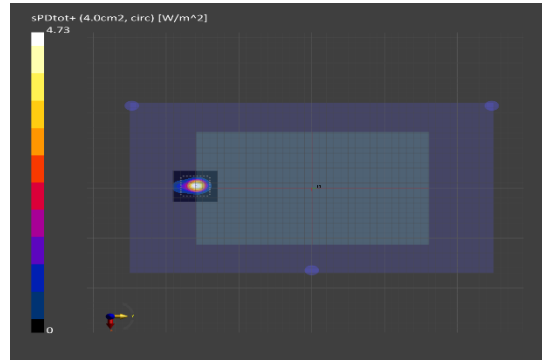


(b) Measurement Rear view

ANT K-Patch: Mid Channel, Point power density



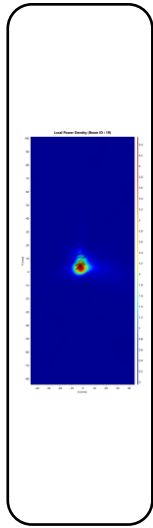
(a) simulation Rear view



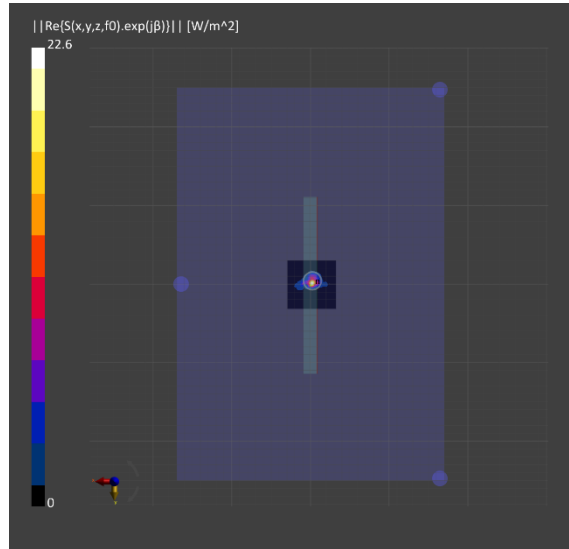
(b) Measurement Rear view

ANT K-Patch: Mid Channel, 4cm<sup>2</sup> averaged power density

- n261 ANT K-Patch: Mid Channel, Beam ID 19, Right (S3)

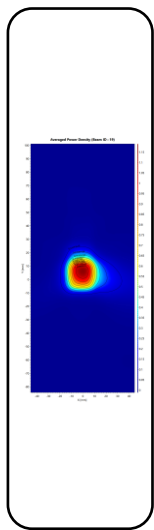


(a) simulation Right view

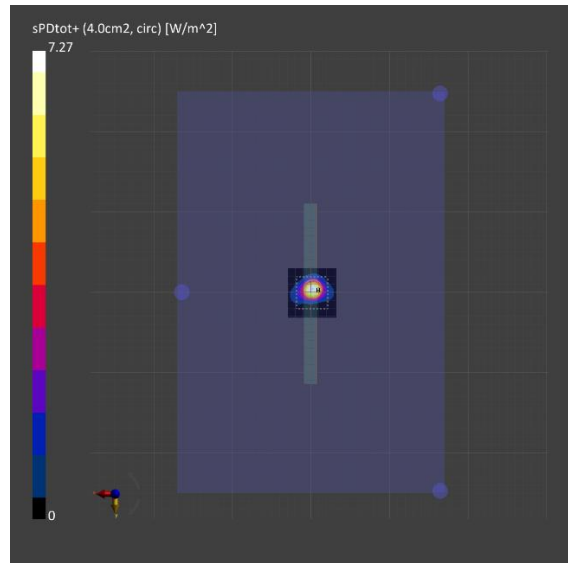


(b) Measurement Right view

ANT K-Patch: Mid Channel, Point power density



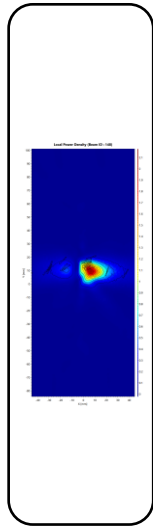
(a) simulation Right view



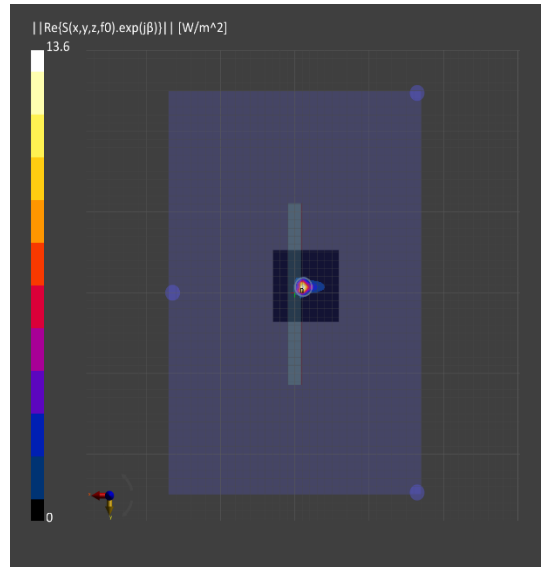
(b) Measurement Right view

ANT K-Patch: Mid Channel, 4cm<sup>2</sup> averaged power density

- n261 ANT K-Patch: Mid Channel, Beam ID 148, Right (S3)

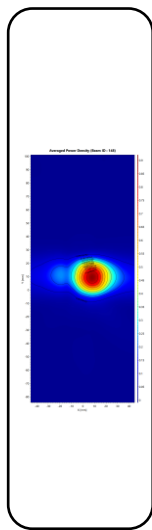


(a) simulation Right view

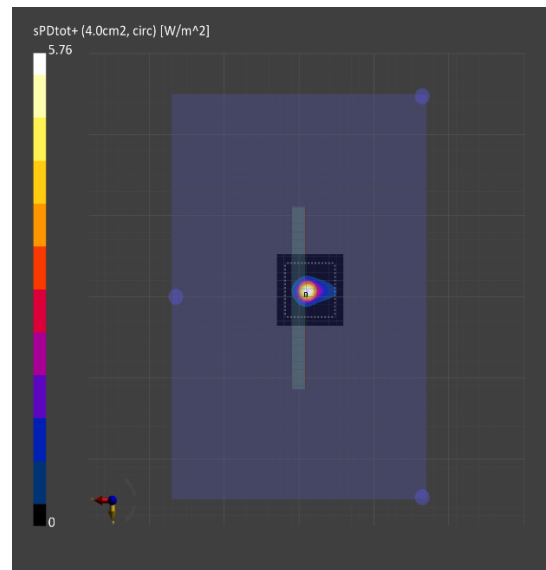


(b) Measurement Right view

ANT K-Patch: Mid Channel, Point power density



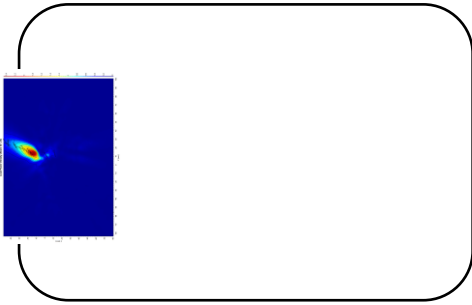
(a) simulation Right view



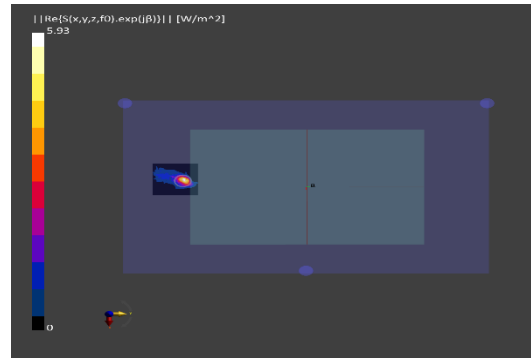
(b) Measurement Right view

ANT K-Patch: Mid Channel, 4cm<sup>2</sup> averaged power density

- n261 ANT L-Patch: Mid Channel, Beam ID 24, Front (S1)

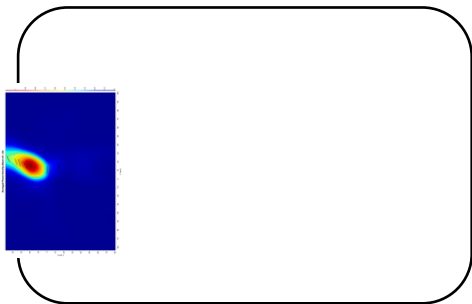


(a) simulation Front view

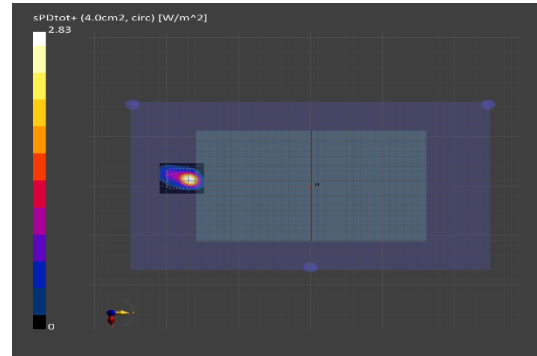


(b) Measurement Front view

ANT L-Patch: Mid Channel, Point power density



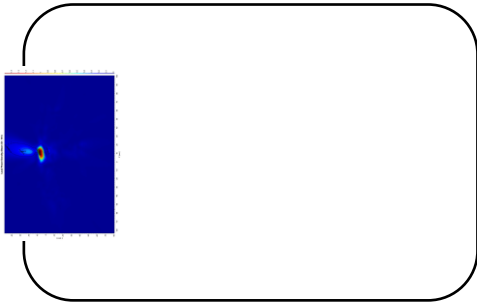
(a) simulation Front view



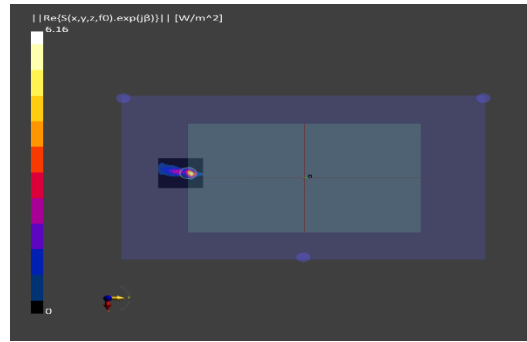
(b) Measurement Front view

ANT L-Patch: Mid Channel, 4cm<sup>2</sup> averaged power density

- n261 ANT L-Patch: Mid Channel, Beam ID 161, Front (S1)

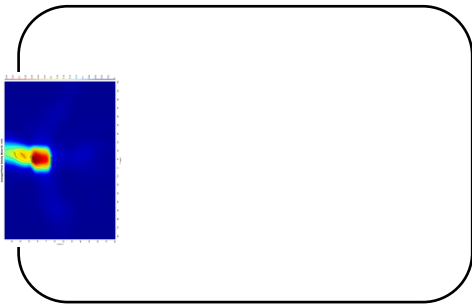


(a) simulation Front view

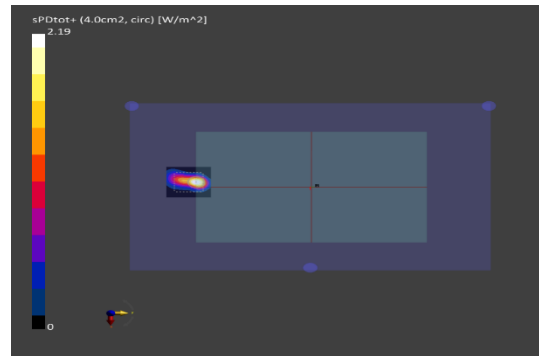


(b) Measurement Front view

ANT L-Patch: Mid Channel, Point power density



(a) simulation Front view

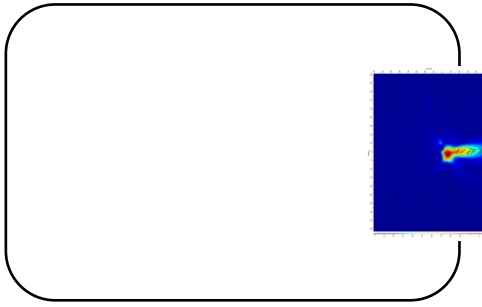


(b) Measurement Front view

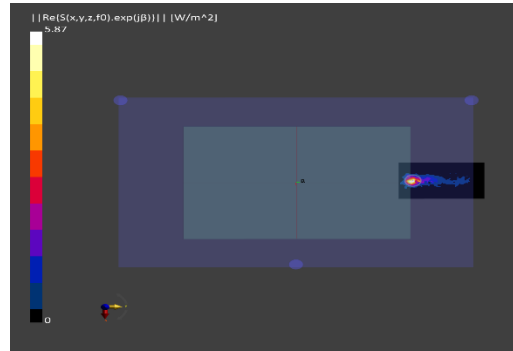
ANT L-Patch: Mid Channel, 4cm<sup>2</sup> averaged power density



- n261 ANT L-Patch: Mid Channel, Beam ID 25, Back (S2)

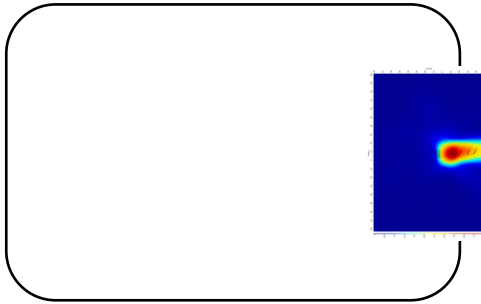


(a) simulation Rear view

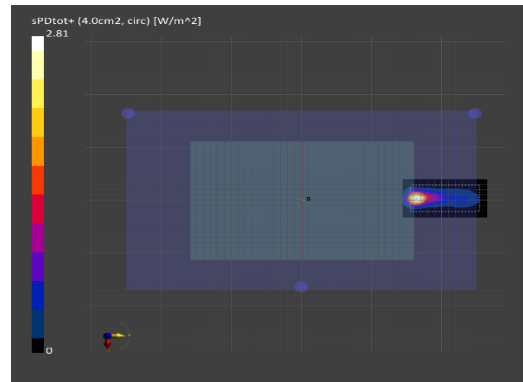


(b) Measurement Rear view

ANT L-Patch: Mid Channel, Point power density



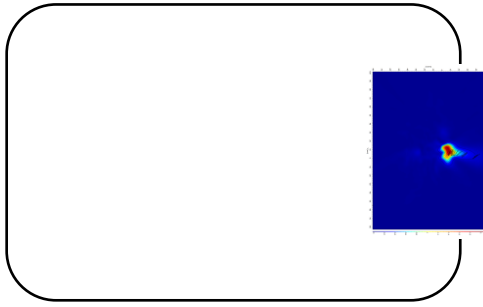
(a) simulation Rear view



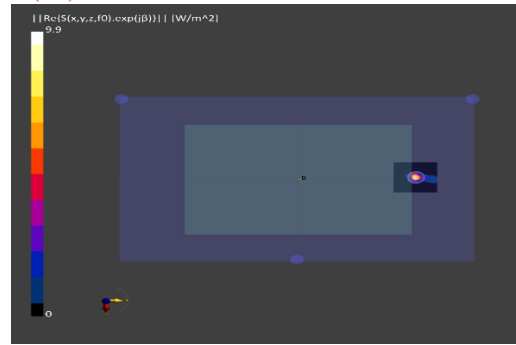
(b) Measurement Rear view

ANT L-Patch: Mid Channel, 4cm<sup>2</sup> averaged power density

- n261 ANT L-Patch: Mid Channel, Beam ID 162, Back (S2)

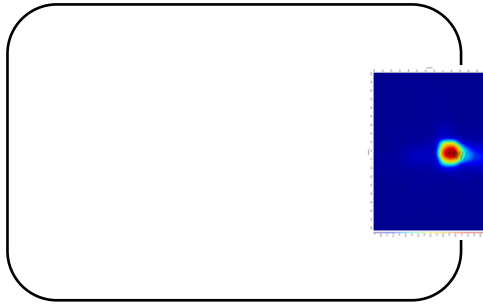


(a) simulation Rear view

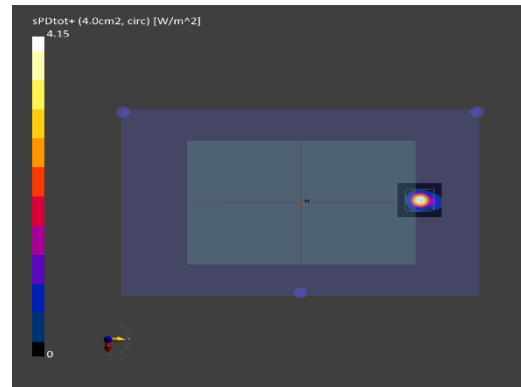


(b) Measurement Rear view

ANT L-Patch: Mid Channel, Point power density



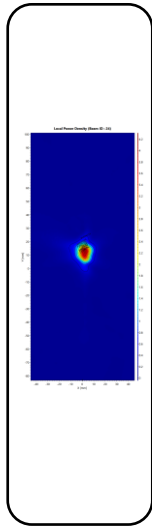
(a) simulation Rear view



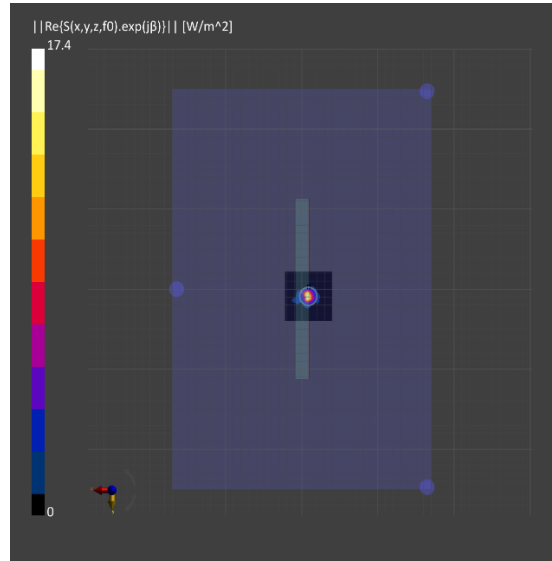
(b) Measurement Rear view

ANT L-Patch: Mid Channel, 4cm<sup>2</sup> averaged power density

- n261 ANT L-Patch: Mid Channel, Beam ID 24, Left (S4)

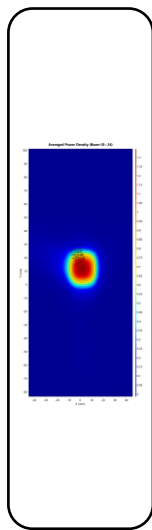


(a) simulation Left view

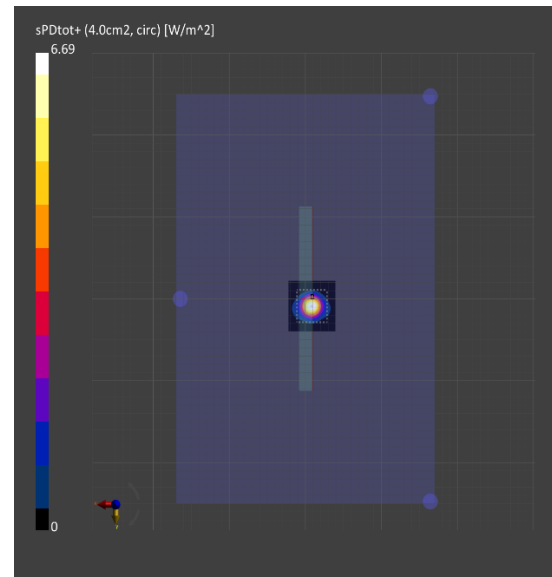


(b) Measurement Left view

ANT L-Patch: Mid Channel, Point power density



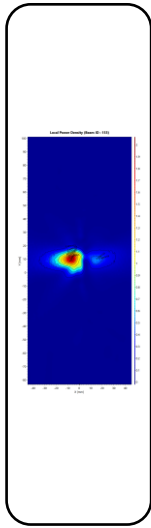
(a) simulation Left view



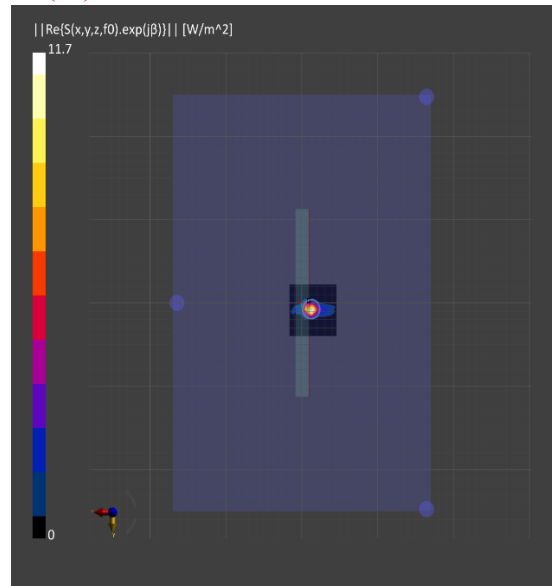
(b) Measurement Left view

ANT L-Patch: Mid Channel, 4cm<sup>2</sup> averaged power density

- n261 ANT L-Patch: Mid Channel, Beam ID 153, Left (S4)

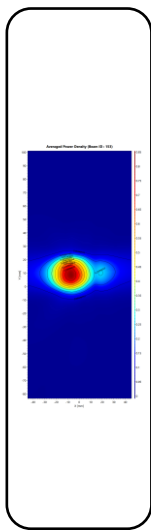


(a) simulation Left view

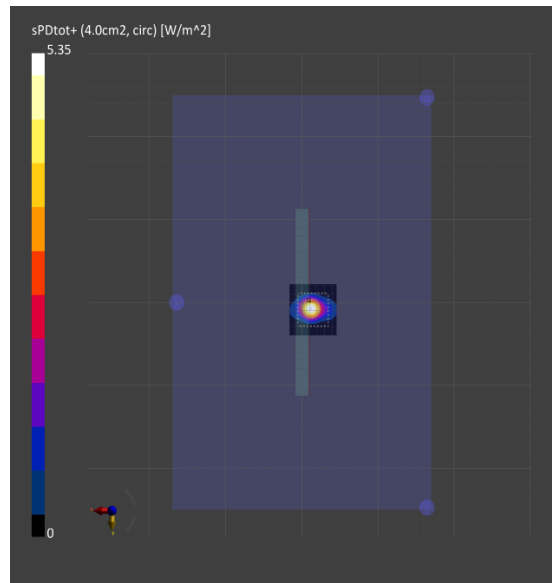


(b) Measurement Left view

ANT L-Patch: Mid Channel, Point power density



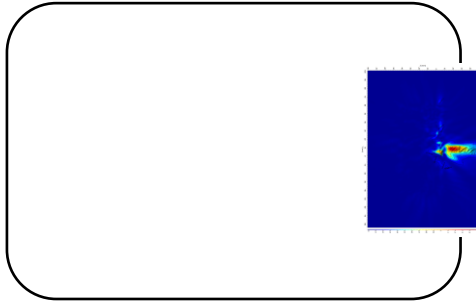
(a) simulation Left view



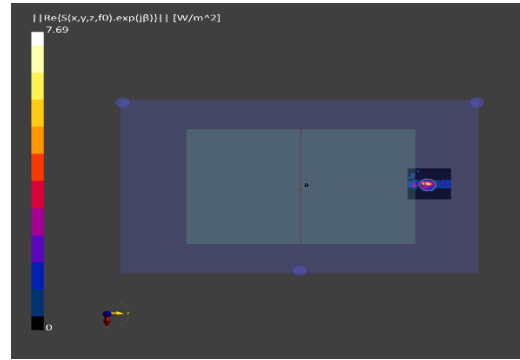
(b) Measurement Left view

ANT L-Patch: Mid Channel, 4cm<sup>2</sup> averaged power density

- n260 ANT K-Patch: Mid Channel, Beam ID 21, Front (S1)

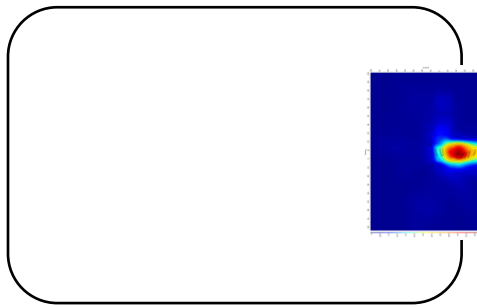


(a) simulation Front view

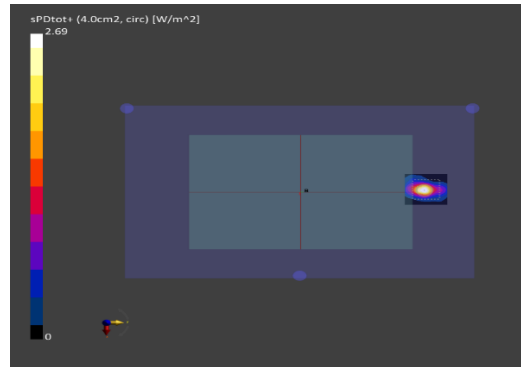


(b) Measurement Front view

ANT K-Patch: Mid Channel, Point power density



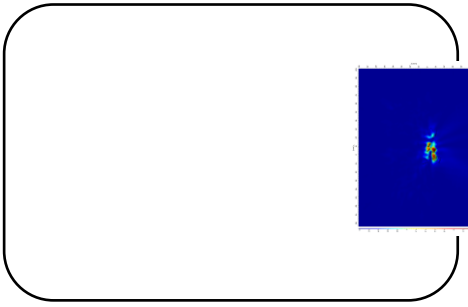
(a) simulation Front view



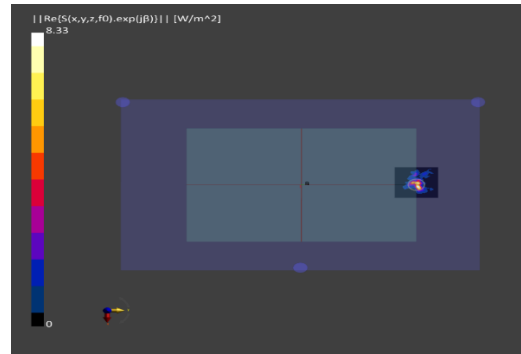
(b) Measurement Front view

ANT K-Patch: Mid Channel, 4cm<sup>2</sup> averaged power density

- n260 ANT K-Patch: Mid Channel, Beam ID 157, Front (S1)

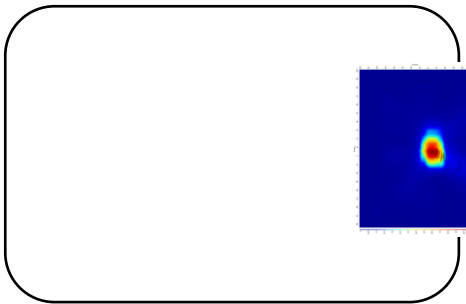


(a) simulation Front view

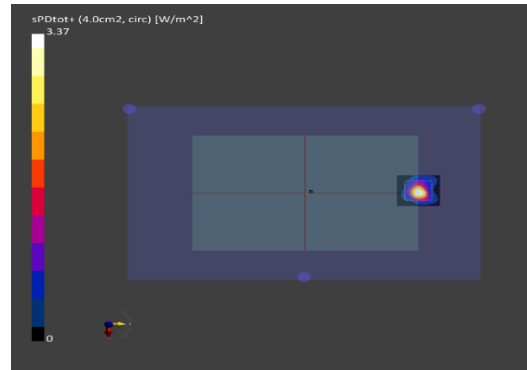


(b) Measurement Front view

ANT K-Patch: Mid Channel, Point power density



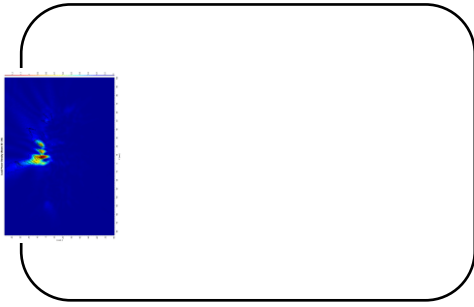
(a) simulation Front view



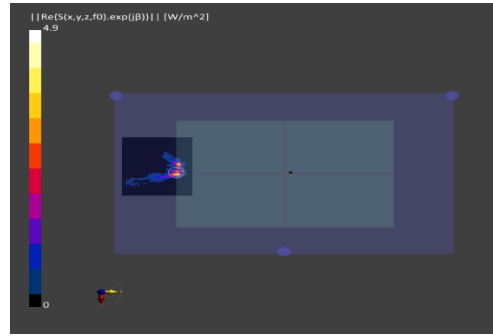
(b) Measurement Front view

ANT K-Patch: Mid Channel, 4cm<sup>2</sup> averaged power density

- n260 ANT K-Patch: Mid Channel, Beam ID 30, Back (S2)

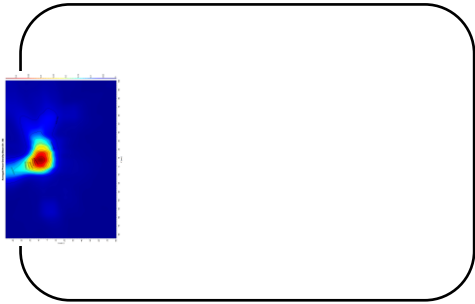


(a) simulation Rear view

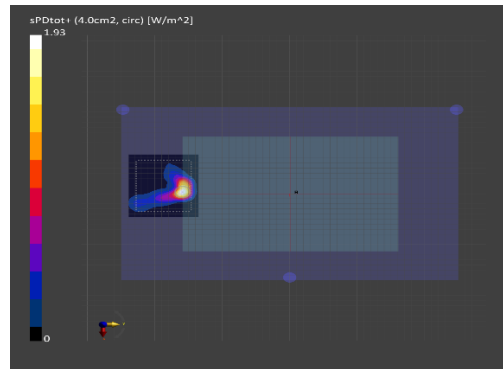


(b) Measurement Rear view

ANT K-Patch: Mid Channel, Point power density



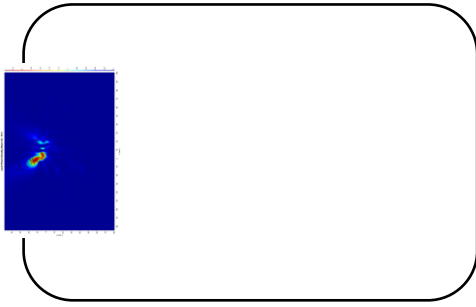
(a) simulation Rear view



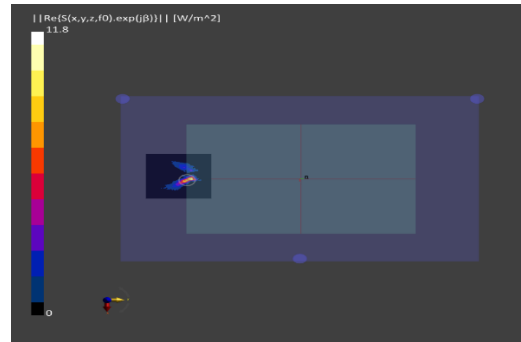
(b) Measurement Rear view

ANT K-Patch: Mid Channel, 4cm<sup>2</sup> averaged power density

- n260 ANT K-Patch: Mid Channel, Beam ID 151, Back (S2)

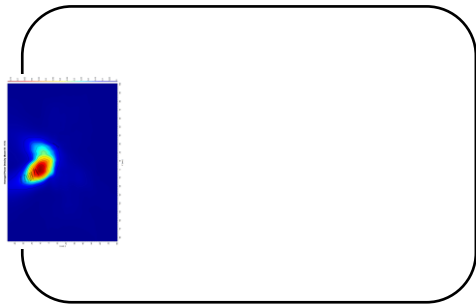


(a) simulation Rear view

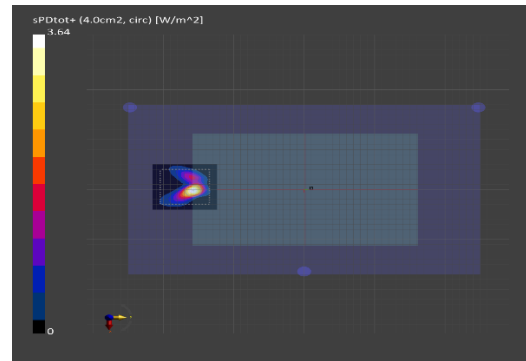


(b) Measurement Rear view

ANT K-Patch: Mid Channel, Point power density



(a) simulation Rear view

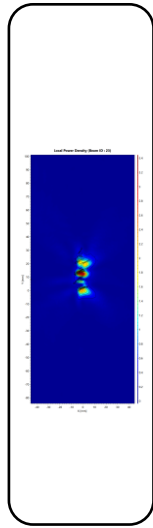


(b) Measurement Rear view

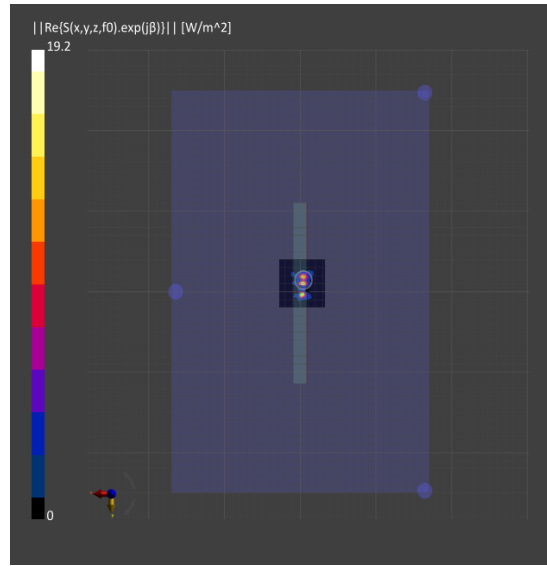
ANT K-Patch: Mid Channel, 4cm<sup>2</sup> averaged power density



- n260 ANT K-Patch: Mid Channel, Beam ID 23, Right (S3)

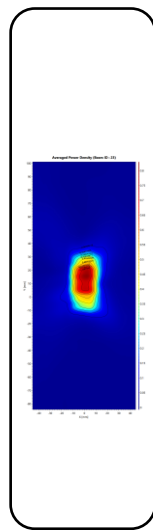


(a) simulation Right view

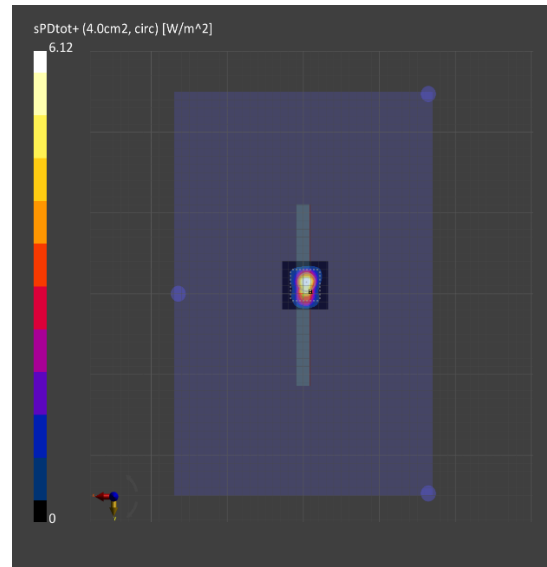


(b) Measurement Right view

ANT K-Patch: Mid Channel, Point power density



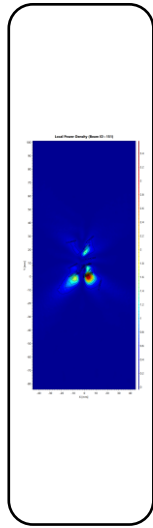
(a) simulation Right view



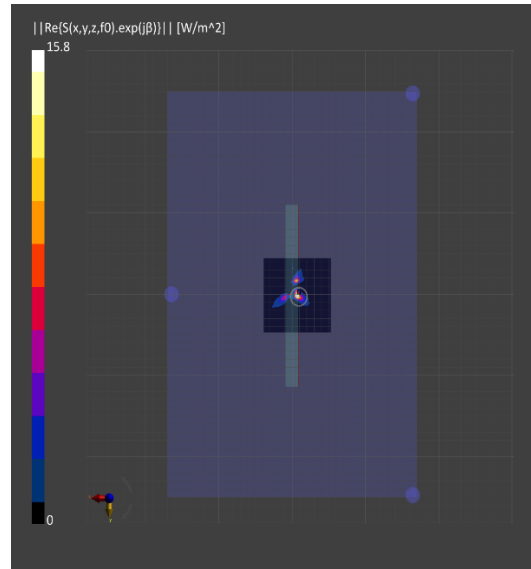
(b) Measurement Right view

ANT K-Patch: Mid Channel, 4cm<sup>2</sup> averaged power density

- n260 ANT K-Patch: Mid Channel, Beam ID 151, Right (S3)

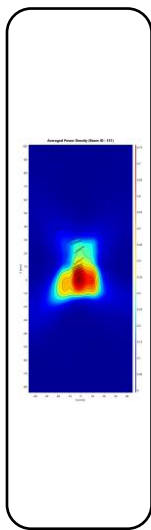


(a) simulation Right view

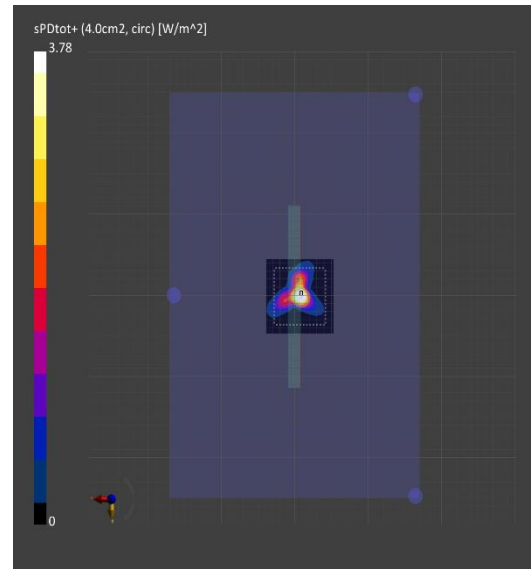


(b) Measurement Right view

ANT K-Patch: Mid Channel, Point power density



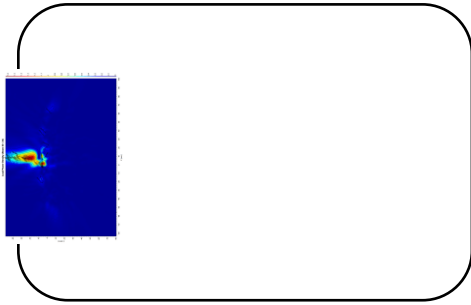
(a) simulation Right view



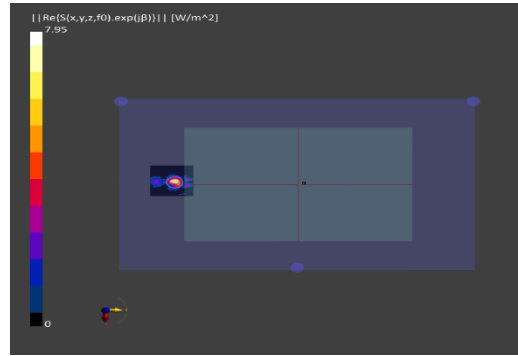
(b) Measurement Right view

ANT K-Patch: Mid Channel, 4cm<sup>2</sup> averaged power density

- n260 ANT L-Patch: Mid Channel, Beam ID 34, Front (S1)

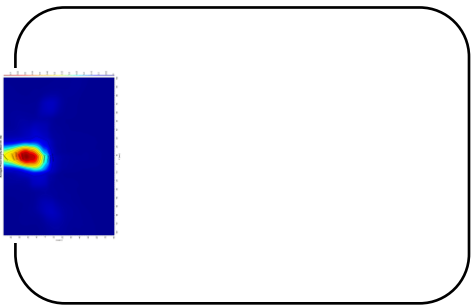


(a) simulation Front view

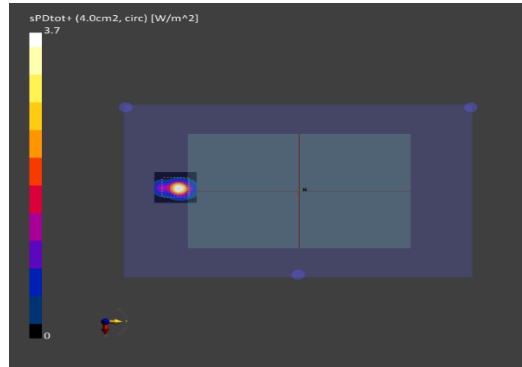


(b) Measurement Front view

ANT L-Patch: Mid Channel, Point power density



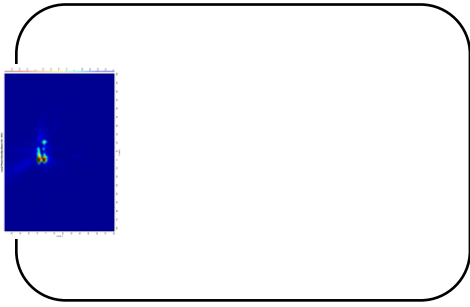
(a) simulation Front view



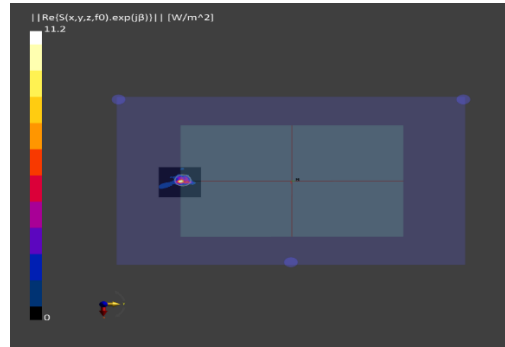
(b) Measurement Front view

ANT L-Patch: Mid Channel, 4cm<sup>2</sup> averaged power density

- n260 ANT L-Patch: Mid Channel, Beam ID 155, Front (S1)

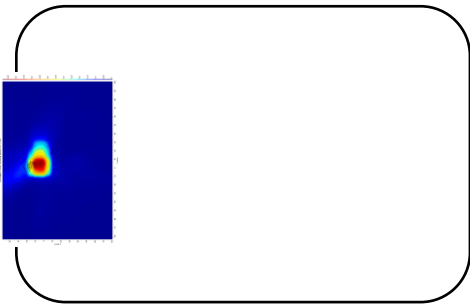


(a) simulation Front view

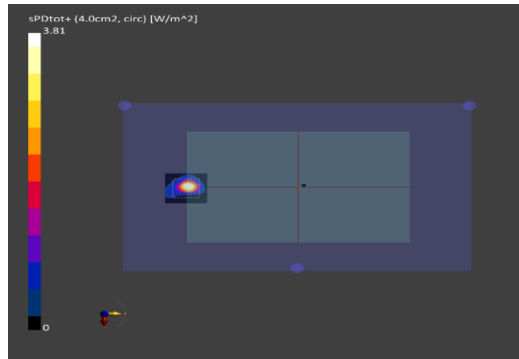


(b) Measurement Front view

ANT L-Patch: Mid Channel, Point power density



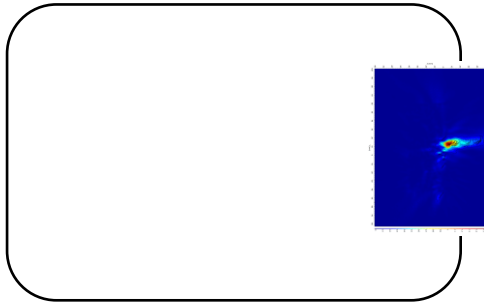
(a) simulation Front view



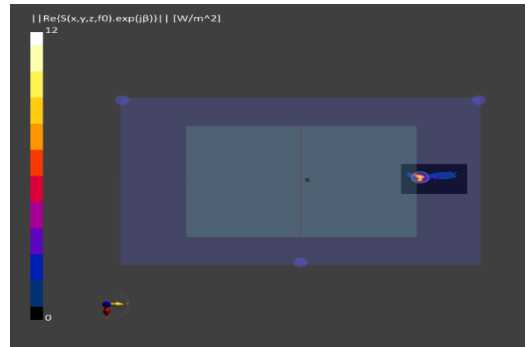
(b) Measurement Front view

ANT L-Patch: Mid Channel, 4cm<sup>2</sup> averaged power density

- n260 ANT L-Patch: Mid Channel, Beam ID 25, Back (S2)

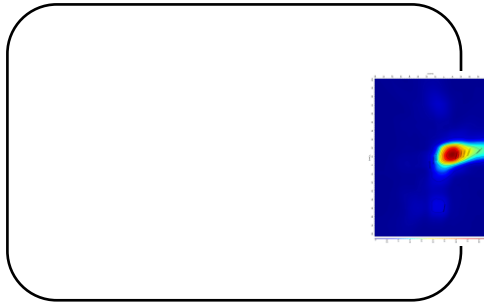


(a) simulation Rear view

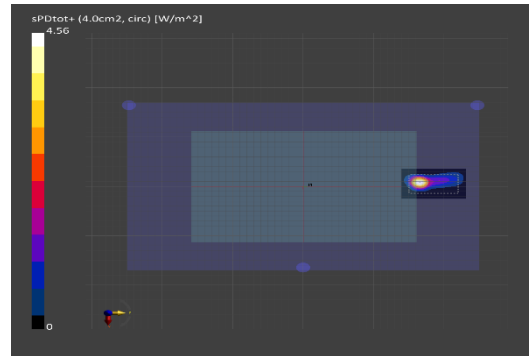


(b) Measurement Rear view

ANT L-Patch: Mid Channel, Point power density



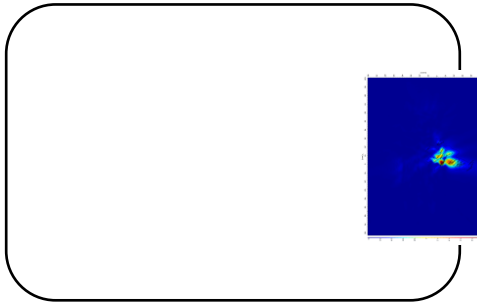
(a) simulation Rear view



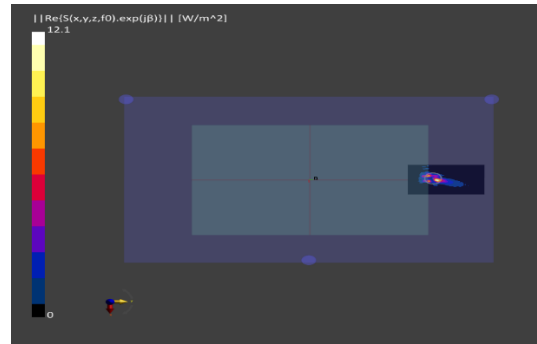
(b) Measurement Rear view

ANT L-Patch: Mid Channel, 4cm<sup>2</sup> averaged power density

- n260 ANT L-Patch: Mid Channel, Beam ID 163, Back (S2)

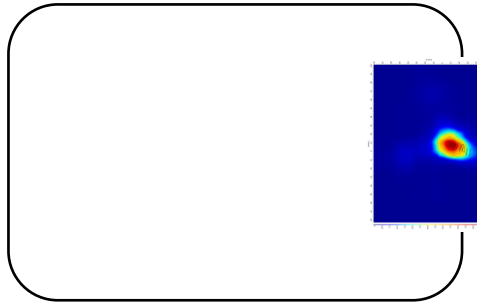


(a) simulation Rear view

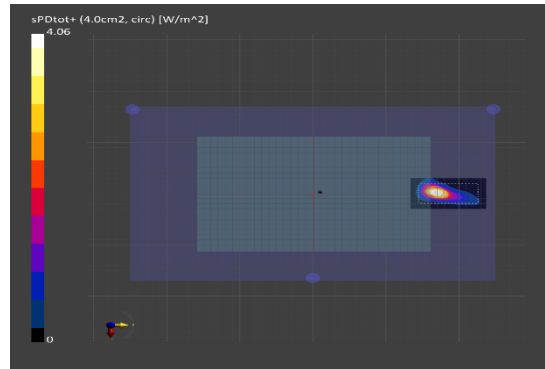


(b) Measurement Rear view

ANT L-Patch: Mid Channel, Point power density



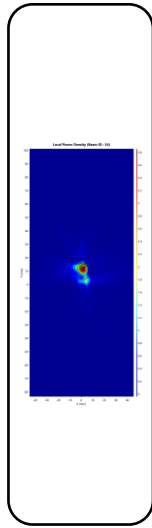
(a) simulation Rear view



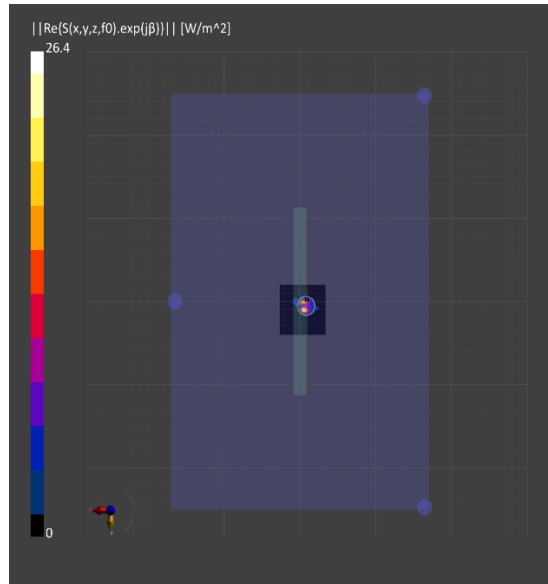
(b) Measurement Rear view

ANT L-Patch: Mid Channel, 4cm<sup>2</sup> averaged power density

- n260 ANT L-Patch: Mid Channel, Beam ID 34, Left (S4)

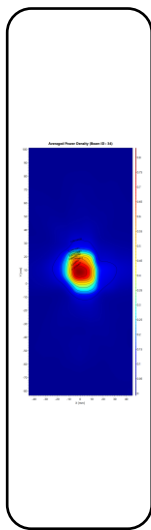


(a) simulation Left view

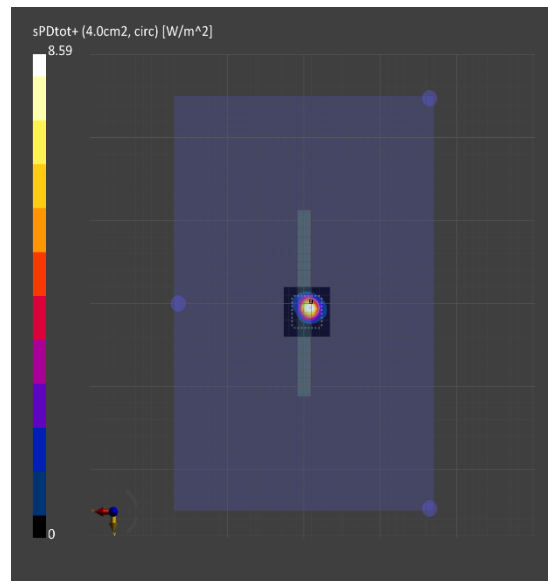


(b) Measurement Left view

ANT L-Patch: Mid Channel, Point power density



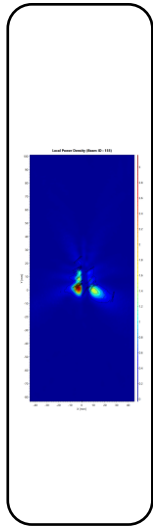
(a) simulation Left view



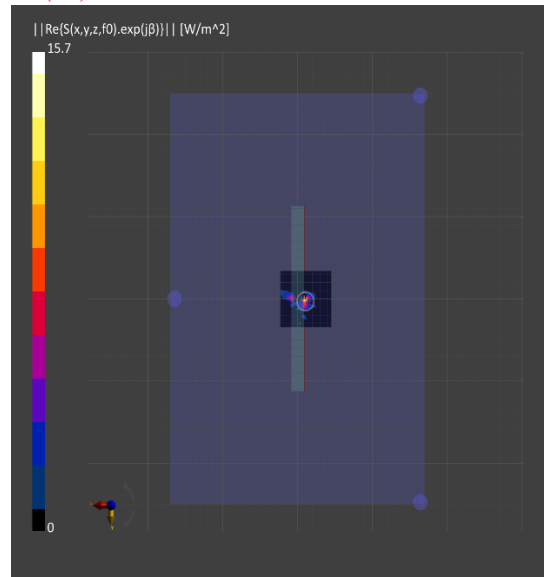
(b) Measurement Left view

ANT L-Patch: Mid Channel, 4cm² averaged power density

- n260 ANT L-Patch: Mid Channel, Beam ID 155, Left (S4)

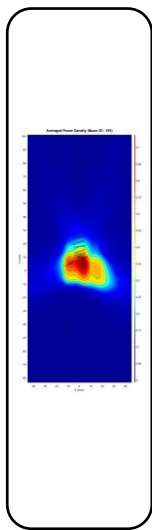


(a) simulation Left view

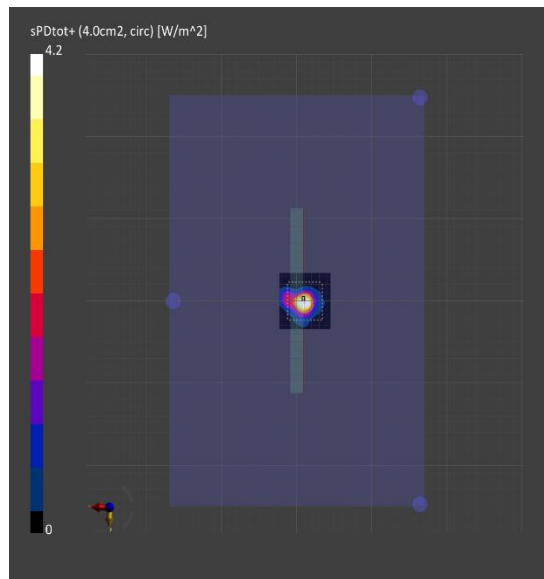


(b) Measurement Left view

ANT L-Patch: Mid Channel, Point power density



(a) simulation Left view



(b) Measurement Left view

ANT L-Patch: Mid Channel, 4cm<sup>2</sup> averaged power density



### 3 Simulation results

This section shows the PD simulation results of Ant K and Ant L at 28GHz and 39GHz for each evaluation plane specified in Table 1 at two separation distances of 2mm and 10mm. The ratio of PD exposure from front surface to the worst surface at 2mm, and the ratio of PD exposure from 2mm to 10mm evaluation distance for each beam are also reported in this section to support RF exposure analysis for simultaneous transmission scenarios performed in Appendix D of Part 1 Near Field PD report.

The relative phase between beam pairs is not controlled in the chipset design. Therefore, the relative phase between each beam pair was considered mathematically to identify the worst case conditions. The below MIMO results represent the highest reported MIMO simulation results after sweeping across the relative phase between beams a 5° step interval from 0° to 360°.

The worst-case simulated PD determined from the tables in this section were used for conservativeness in *input.power.limit* determination in RF Exposure Part 0 Report.

#### 3.1 PD for Low/Mid/High Channel at 28GHz / 39GHz

##### 3.1.1 Ant K – Patch Antenna

Table 4 & Table 5 show the PD simulation evaluation of Ant K patch antenna at 28GHz / 39GHz for the corresponding evaluation planes specified in Table 1.

Table 4. PD of Ant K – patch antenna (28GHz – n261)



No.	Module	Type(P or D)	Beam ID_1	Beam ID_2	Feed no.	4cm2 PD(mW/cm2)							Max. PD w/ MIMO rate	Scaling Factor	Note	
						S2(Rear)	S1(Front)	S5(Top)	S6(Bottom)	S4(Right)	S3(Left)	Max				
1	Module 0	Patch	0			0.17	0.21	0.01	0.01	0.29	0.01	0.29	0.29	2.12		
2			2			0.14	0.17	0.01	0.01	0.25	0.01	0.25	0.25	2.51		
3			4			0.28	0.36	0.02	0.02	0.47	0.02	0.47	0.47	1.32		
4			5			0.41	0.53	0.01	0.01	0.73	0.02	0.73	0.73	0.85		
5			6			0.44	0.50	0.01	0.01	0.67	0.01	0.67	0.67	0.92		
6			7			0.29	0.37	0.02	0.03	0.44	0.02	0.44	0.44	1.40		
7			12			0.32	0.48	0.02	0.02	0.66	0.02	0.66	0.66	0.94		
8			13			0.28	0.45	0.01	0.01	0.56	0.02	0.56	0.56	1.09		
9			14			0.28	0.34	0.01	0.04	0.44	0.01	0.44	0.44	1.41		
10			18			0.49	0.72	0.08	0.07	1.01	0.05	1.01	1.01	0.61		
11			19			0.66	1.03	0.01	0.01	1.28	0.04	1.28	1.28	0.48		
12			20			0.66	0.96	0.02	0.02	1.16	0.03	1.16	1.16	0.53		
13			21			0.63	0.95	0.01	0.02	1.16	0.04	1.16	1.16	0.53		
14			22			0.48	0.57	0.05	0.09	0.67	0.04	0.67	0.67	0.92		
15			28			0.57	0.94	0.04	0.05	1.23	0.04	1.23	1.23	0.50		
16			29			0.71	1.02	0.01	0.01	1.22	0.03	1.22	1.22	0.50		
17			30			0.66	0.97	0.01	0.01	1.17	0.03	1.17	1.17	0.53		
18			31			0.53	0.76	0.04	0.06	0.94	0.04	0.94	0.94	0.66		
19			128			0.30	0.10	0.01	0.01	0.26	0.00	0.30	0.30	2.03		
20			130			0.17	0.05	0.00	0.02	0.14	0.00	0.17	0.17	3.67		
21			132			0.43	0.17	0.05	0.03	0.31	0.02	0.43	0.43	1.43		
22			133			0.62	0.20	0.01	0.01	0.57	0.01	0.62	0.62	0.99		
23			134			0.62	0.19	0.01	0.03	0.55	0.01	0.62	0.62	0.99		
24			135			0.48	0.18	0.03	0.05	0.42	0.01	0.48	0.48	1.27		
25			140			0.51	0.19	0.03	0.01	0.47	0.01	0.51	0.51	1.20		
26			141			0.46	0.13	0.01	0.01	0.41	0.01	0.46	0.46	1.36		
27			142			0.48	0.18	0.03	0.05	0.43	0.01	0.48	0.48	1.30		
28			146			0.64	0.33	0.12	0.04	0.52	0.03	0.64	0.64	0.97		
29			147			0.97	0.35	0.02	0.03	0.87	0.03	0.97	0.97	0.64		
30			148			1.02	0.32	0.02	0.02	0.97	0.02	1.02	1.02	0.60		
31			149			0.90	0.31	0.01	0.05	0.83	0.01	0.90	0.90	0.68		
32			150			0.81	0.37	0.05	0.19	0.75	0.02	0.81	0.81	0.76		
33			156			0.81	0.38	0.06	0.03	0.70	0.03	0.81	0.81	0.76		
34			157			1.04	0.33	0.02	0.02	0.95	0.02	1.04	1.04	0.59		
35			158			0.99	0.33	0.01	0.01	0.94	0.02	0.99	0.99	0.63		
36			159			0.87	0.35	0.03	0.13	0.80	0.02	0.87	0.87	0.71		
37			0	128			0.55	0.35	0.03	0.03	0.59	0.02	0.59	0.59	1.05	
38			2	130			0.33	0.26	0.01	0.05	0.43	0.01	0.43	0.43	1.43	
39			4	132			0.66	0.55	0.11	0.06	0.80	0.04	0.80	0.80	0.77	
40			5	133			1.20	0.84	0.03	0.02	1.38	0.03	1.38	1.38	0.45	
41			6	134			1.12	0.75	0.03	0.08	1.34	0.03	1.34	1.34	0.46	
42			7	135			0.90	0.69	0.06	0.14	0.99	0.03	0.99	0.99	0.63	
43			12	140			1.02	0.86	0.07	0.04	1.23	0.04	1.23	1.23	0.50	
44			13	141			0.68	0.55	0.03	0.03	0.86	0.03	0.86	0.86	0.71	
45			14	142			0.92	0.49	0.05	0.13	0.90	0.03	0.92	0.92	0.67	
46			18	146			1.46	1.51	0.34	0.13	2.00	0.08	2.00	2.00	0.31	
47			19	147			1.84	1.61	0.05	0.05	2.23	0.07	2.23	2.23	0.28	
48			20	148			1.85	1.48	0.05	0.04	2.27	0.06	2.27	2.27	0.27	
49			21	149			1.62	1.58	0.03	0.12	2.37	0.08	2.37	2.37	0.26	
50			22	150			1.74	1.17	0.15	0.43	1.64	0.07	1.74	1.74	0.35	
51			28	156			1.65	1.71	0.18	0.07	2.23	0.08	2.23	2.23	0.28	
52			29	157			1.94	1.49	0.05	0.04	2.21	0.05	2.21	2.21	0.28	
53			30	158			1.79	1.62	0.04	0.04	2.42	0.08	2.42	2.42	0.25	
54			31	159			1.57	1.32	0.10	0.31	2.04	0.06	2.04	2.04	0.30	

- K-patch Low CH



PD Simulation															
No.	Module	Type(P or D)	Beam ID_1	Bema ID_2	Feed no.	4cm2 PD(mW/cm2)							Max. PD w/ MIMO rate	Scaling Factor	Note
						S2(Rear)	S1(Front)	S5(Top)	S6(Bottom)	S4(Right)	S3(Left)	Max			
1			0			0.17	0.19	0.01	0.01	0.27	0.01	0.27	0.27	2.31	
2			2			0.15	0.16	0.01	0.01	0.24	0.01	0.24	0.24	2.62	
3			4			0.29	0.33	0.02	0.02	0.45	0.02	0.45	0.45	1.36	
4			5			0.41	0.48	0.01	0.01	0.68	0.01	0.68	0.68	0.90	
5			6			0.44	0.48	0.01	0.01	0.64	0.01	0.64	0.64	0.96	
6			7			0.31	0.37	0.02	0.04	0.43	0.02	0.43	0.43	1.44	
7			12			0.32	0.43	0.02	0.02	0.61	0.01	0.61	0.61	1.01	
8			13			0.27	0.42	0.01	0.01	0.53	0.02	0.53	0.53	1.17	
9			14			0.29	0.33	0.01	0.04	0.42	0.02	0.42	0.42	1.47	
10			18			0.47	0.68	0.08	0.06	0.95	0.04	0.95	0.95	0.65	
11			19			0.64	0.91	0.02	0.01	1.18	0.03	1.18	1.18	0.52	
12			20			0.67	0.88	0.01	0.02	1.12	0.02	1.12	1.12	0.55	
13			21			0.63	0.91	0.01	0.03	1.11	0.04	1.11	1.11	0.55	
14			22			0.48	0.60	0.05	0.11	0.64	0.05	0.64	0.64	0.96	
15			28			0.55	0.83	0.05	0.04	1.12	0.03	1.12	1.12	0.55	
16			29			0.69	0.92	0.01	0.02	1.15	0.03	1.15	1.15	0.53	
17			30			0.67	0.90	0.01	0.01	1.13	0.03	1.13	1.13	0.54	
18			31			0.54	0.76	0.04	0.08	0.89	0.03	0.89	0.89	0.70	
19			128			0.29	0.10	0.01	0.01	0.24	0.01	0.29	0.29	2.16	
20			130			0.16	0.05	0.00	0.02	0.14	0.00	0.16	0.16	3.79	
21			132			0.41	0.15	0.04	0.03	0.29	0.02	0.41	0.41	1.51	
22			133			0.61	0.19	0.01	0.01	0.54	0.01	0.61	0.61	1.02	
23			134			0.58	0.18	0.01	0.03	0.53	0.01	0.58	0.58	1.06	
24			135			0.43	0.16	0.02	0.05	0.37	0.01	0.43	0.43	1.44	
25			140			0.52	0.18	0.02	0.01	0.45	0.01	0.52	0.52	1.18	
26			141			0.43	0.12	0.01	0.01	0.39	0.01	0.43	0.43	1.43	
27			142			0.43	0.17	0.02	0.05	0.41	0.01	0.43	0.43	1.43	
28			146			0.68	0.28	0.09	0.04	0.49	0.03	0.68	0.68	0.91	
29			147			0.92	0.33	0.02	0.02	0.81	0.03	0.92	0.92	0.67	
30			148			0.96	0.30	0.01	0.02	0.91	0.02	0.96	0.96	0.64	
31			149			0.83	0.28	0.01	0.05	0.76	0.01	0.83	0.83	0.75	
32			150			0.72	0.34	0.05	0.17	0.72	0.02	0.72	0.72	0.85	
33			156			0.80	0.33	0.05	0.03	0.66	0.03	0.80	0.80	0.77	
34			157			0.96	0.31	0.01	0.02	0.89	0.02	0.96	0.96	0.64	
35			158			0.93	0.30	0.01	0.01	0.87	0.02	0.93	0.93	0.67	
36			159			0.80	0.32	0.03	0.13	0.76	0.02	0.80	0.80	0.77	
37			0	128		0.54	0.32	0.03	0.03	0.56	0.01	0.56	0.56	1.09	
38			2	130		0.34	0.24	0.01	0.05	0.41	0.01	0.41	0.41	1.51	
39			4	132		0.69	0.51	0.09	0.06	0.81	0.04	0.81	0.81	0.76	
40			5	133		1.25	0.79	0.03	0.02	1.35	0.02	1.35	1.35	0.46	
41			6	134		1.11	0.72	0.03	0.08	1.29	0.03	1.29	1.29	0.48	
42			7	135		0.87	0.67	0.06	0.13	0.89	0.04	0.89	0.89	0.69	
43			12	140		1.08	0.80	0.06	0.04	1.19	0.03	1.19	1.19	0.52	
44			13	141		0.66	0.53	0.03	0.03	0.83	0.02	0.83	0.83	0.74	
45			14	142		0.91	0.50	0.04	0.13	0.86	0.03	0.91	0.91	0.68	
46			18	146		1.59	1.41	0.30	0.13	1.79	0.09	1.79	1.79	0.34	
47			19	147		1.89	1.45	0.06	0.04	2.13	0.07	2.13	2.13	0.29	
48			20	148		1.86	1.38	0.04	0.05	2.21	0.06	2.21	2.21	0.28	
49			21	149		1.56	1.48	0.03	0.13	2.20	0.07	2.20	2.20	0.28	
50			22	150		1.64	1.25	0.14	0.45	1.52	0.07	1.64	1.64	0.38	
51			28	156		1.74	1.54	0.18	0.06	1.99	0.06	1.99	1.99	0.31	
52			29	157		1.94	1.34	0.04	0.05	2.18	0.05	2.18	2.18	0.28	
53			30	158		1.80	1.52	0.04	0.04	2.30	0.07	2.30	2.30	0.27	
54			31	159		1.56	1.32	0.09	0.33	1.89	0.06	1.89	1.89	0.33	

K-patch Mid CH



PD Simulation															
No.	Module	Type(P or D)	Beam ID_1	Bema ID_2	Feed no.	4cm2 PD(mW/cm2)						Max	Max. PD w/ MIMO rate	Scaling Factor	Note
						S2(Rear)	S1(Front)	S5(Top)	S6(Bottom)	S4(Right)	S3(Left)				
1			0			0.16	0.18	0.01	0.01	0.25	0.01	0.25	0.25	2.50	
2			2			0.15	0.15	0.01	0.01	0.23	0.01	0.23	0.23	2.72	
3			4			0.28	0.30	0.02	0.02	0.43	0.02	0.43	0.43	1.44	
4			5			0.40	0.46	0.01	0.01	0.64	0.01	0.64	0.64	0.97	
5			6			0.43	0.46	0.01	0.02	0.62	0.01	0.62	0.62	1.00	
6			7			0.29	0.37	0.02	0.04	0.41	0.02	0.41	0.41	1.49	
7			12			0.30	0.40	0.02	0.02	0.55	0.01	0.55	0.55	1.12	
8			13			0.26	0.41	0.01	0.01	0.51	0.01	0.51	0.51	1.21	
9			14			0.30	0.32	0.01	0.04	0.40	0.02	0.40	0.40	1.54	
10			18			0.43	0.61	0.09	0.06	0.84	0.03	0.84	0.84	0.73	
11			19			0.61	0.85	0.02	0.01	1.11	0.03	1.11	1.11	0.55	
12			20			0.65	0.85	0.01	0.01	1.10	0.02	1.10	1.10	0.56	
13			21			0.64	0.88	0.01	0.03	1.08	0.04	1.08	1.08	0.57	
14			22			0.44	0.59	0.05	0.12	0.61	0.04	0.61	0.61	1.00	
15			28			0.52	0.75	0.06	0.03	1.02	0.03	1.02	1.02	0.60	
16			29			0.66	0.87	0.01	0.02	1.11	0.03	1.11	1.11	0.56	
17			30			0.66	0.88	0.01	0.01	1.12	0.03	1.12	1.12	0.55	
18			31			0.53	0.73	0.04	0.09	0.84	0.03	0.84	0.84	0.74	
19			128			0.26	0.09	0.01	0.01	0.22	0.01	0.26	0.26	2.41	
20			130			0.15	0.05	0.00	0.02	0.13	0.00	0.15	0.15	4.14	
21			132			0.38	0.13	0.03	0.03	0.26	0.01	0.38	0.38	1.64	
22			133			0.55	0.17	0.01	0.00	0.48	0.01	0.55	0.55	1.13	
23			134			0.52	0.16	0.01	0.03	0.47	0.01	0.52	0.52	1.18	
24			135			0.37	0.14	0.02	0.04	0.31	0.01	0.37	0.37	1.65	
25			140			0.48	0.16	0.02	0.01	0.41	0.01	0.48	0.48	1.29	
26			141			0.38	0.11	0.01	0.01	0.35	0.01	0.38	0.38	1.63	
27			142			0.38	0.15	0.02	0.04	0.36	0.01	0.38	0.38	1.63	
28	Module 0	Patch	146			0.66	0.25	0.07	0.04	0.45	0.02	0.66	0.66	0.94	
29			147			0.81	0.28	0.02	0.02	0.72	0.02	0.81	0.81	0.76	
30			148			0.85	0.27	0.01	0.01	0.81	0.02	0.85	0.85	0.73	
31			149			0.72	0.25	0.01	0.05	0.66	0.01	0.72	0.72	0.85	
32			150			0.65	0.31	0.05	0.16	0.64	0.02	0.65	0.65	0.95	
33			156			0.74	0.29	0.05	0.02	0.60	0.02	0.74	0.74	0.84	
34			157			0.85	0.27	0.01	0.02	0.79	0.02	0.85	0.85	0.73	
35			158			0.81	0.27	0.01	0.01	0.77	0.02	0.81	0.81	0.76	
36			159			0.72	0.29	0.02	0.12	0.67	0.01	0.72	0.72	0.85	
37			0	128		0.51	0.30	0.03	0.03	0.54	0.01	0.54	0.54	1.15	
38			2	130		0.34	0.21	0.02	0.05	0.38	0.01	0.38	0.38	1.61	
39			4	132		0.66	0.48	0.08	0.06	0.77	0.03	0.77	0.77	0.81	
40			5	133		1.24	0.74	0.03	0.01	1.29	0.02	1.29	1.29	0.48	
41			6	134		1.09	0.69	0.02	0.08	1.22	0.03	1.22	1.22	0.50	
42			7	135		0.80	0.66	0.05	0.14	0.84	0.04	0.84	0.84	0.74	
43			12	140		1.07	0.74	0.06	0.04	1.12	0.02	1.12	1.12	0.55	
44			13	141		0.61	0.42	0.03	0.03	0.79	0.02	0.79	0.79	0.78	
45			14	142		0.86	0.49	0.04	0.14	0.82	0.03	0.86	0.86	0.71	
46			18	146		1.56	1.30	0.29	0.11	1.54	0.08	1.56	1.56	0.39	
47			19	147		1.83	1.32	0.07	0.04	2.07	0.06	2.07	2.07	0.30	
48			20	148		1.82	1.33	0.04	0.05	2.16	0.05	2.16	2.16	0.29	
49			21	149		1.56	1.39	0.03	0.13	2.04	0.06	2.04	2.04	0.30	
50			22	150		1.48	1.25	0.12	0.47	1.44	0.06	1.48	1.48	0.42	
51			28	156		1.71	1.39	0.20	0.05	1.85	0.07	1.85	1.85	0.33	
52			29	157		1.87	1.25	0.04	0.05	2.15	0.05	2.15	2.15	0.29	
53			30	158		1.75	1.46	0.04	0.03	2.20	0.07	2.20	2.20	0.28	
54			31	159		1.50	1.28	0.08	0.35	1.72	0.05	1.72	1.72	0.36	

- K-patch High CH

Table 5. PD of Ant K – patch antenna (39GHz – n260)

No.	Module	Type(P or D)	Beam ID.1	Beam ID.2	Feed no.	4cm2 PD(mW/cm2)							Max	Max. PD w/ MIMO ratio	Scaling Factor	Note
						S2(Rear)	S1(Front)	S5(Top)	S6(Bottom)	S4(Right)	S3(Left)	S4(Left)				
1	Module 0	Patch	0			0.11	0.12	0.01	0.01	0.19	0.00	0.19	0.19	3.16		
2			2			0.12	0.12	0.01	0.02	0.26	0.01	0.26	0.26	2.40		
3			5			0.23	0.21	0.03	0.04	0.42	0.01	0.42	0.42	1.46		
4			6			0.23	0.23	0.03	0.01	0.39	0.01	0.39	0.39	1.60		
5			7			0.23	0.26	0.01	0.05	0.48	0.01	0.48	0.48	1.28		
6			8			0.21	0.26	0.03	0.02	0.41	0.01	0.41	0.41	1.52		
7			13			0.21	0.24	0.02	0.03	0.45	0.01	0.45	0.45	1.37		
8			14			0.20	0.27	0.02	0.03	0.36	0.01	0.36	0.36	1.70		
9			15			0.20	0.23	0.01	0.05	0.44	0.01	0.44	0.44	1.40		
10			19			0.39	0.38	0.05	0.11	0.78	0.02	0.78	0.78	0.79		
11			20			0.48	0.43	0.06	0.02	0.71	0.02	0.71	0.71	0.87		
12			21			0.49	0.68	0.03	0.02	0.86	0.02	0.86	0.86	0.71		
13			22			0.29	0.35	0.01	0.11	0.56	0.03	0.56	0.56	1.10		
14			23			0.45	0.42	0.08	0.09	0.88	0.01	0.88	0.88	0.70		
15			29			0.46	0.41	0.08	0.03	0.71	0.02	0.71	0.71	0.87		
16			30			0.46	0.52	0.07	0.02	0.73	0.02	0.73	0.73	0.85		
17			31			0.50	0.55	0.02	0.07	0.79	0.02	0.79	0.79	0.78		
18			32			0.29	0.44	0.02	0.13	0.81	0.02	0.81	0.81	0.76		
19			128			0.21	0.21	0.00	0.02	0.21	0.01	0.21	0.21	2.89		
20			130			0.19	0.11	0.00	0.01	0.18	0.00	0.19	0.19	3.24		
21			133			0.30	0.18	0.01	0.03	0.25	0.01	0.30	0.30	2.08		
22			134			0.34	0.20	0.01	0.01	0.32	0.01	0.34	0.34	1.82		
23			135			0.34	0.27	0.01	0.06	0.35	0.01	0.35	0.35	1.77		
24			136			0.37	0.38	0.02	0.03	0.35	0.02	0.38	0.38	1.61		
25			141			0.49	0.46	0.02	0.03	0.47	0.02	0.49	0.49	1.25		
26			142			0.31	0.17	0.01	0.03	0.32	0.01	0.32	0.32	1.95		
27			143			0.37	0.38	0.02	0.03	0.35	0.02	0.38	0.38	1.61		
28			147			0.76	0.50	0.03	0.09	0.59	0.03	0.76	0.76	0.81		
29			148			0.82	0.66	0.03	0.02	0.79	0.03	0.82	0.82	0.75		
30			149			0.68	0.55	0.04	0.06	0.70	0.03	0.70	0.70	0.88		
31			150			0.52	0.46	0.02	0.13	0.59	0.03	0.59	0.59	1.04		
32			151			0.79	0.51	0.04	0.08	0.66	0.03	0.79	0.79	0.78		
33			157			0.82	0.58	0.03	0.09	0.68	0.03	0.82	0.82	0.75		
34			158			0.74	0.66	0.04	0.04	0.79	0.02	0.79	0.79	0.78		
35			159			0.54	0.47	0.03	0.12	0.58	0.02	0.58	0.58	1.06		
36			160			0.69	0.44	0.03	0.08	0.46	0.04	0.69	0.69	0.89		
37			0	128			0.38	0.36	0.02	0.04	0.40	0.02	0.40	0.40	1.55	
38			2	130			0.41	0.27	0.02	0.04	0.47	0.01	0.47	0.47	1.30	
39			5	133			0.63	0.43	0.04	0.07	0.83	0.03	0.83	0.83	0.75	
40			6	134			0.58	0.48	0.05	0.03	0.73	0.02	0.73	0.73	0.85	
41			7	135			0.76	0.48	0.03	0.13	0.90	0.03	0.90	0.90	0.69	
42			8	136			0.72	0.76	0.05	0.06	0.86	0.03	0.86	0.86	0.71	
43			13	141			0.74	0.65	0.05	0.06	0.92	0.03	0.92	0.92	0.67	
44			14	142			0.59	0.48	0.03	0.08	0.71	0.02	0.71	0.71	0.87	
45			15	143			0.67	0.72	0.03	0.09	0.87	0.04	0.87	0.87	0.71	
46			19	147			1.53	1.09	0.10	0.21	1.84	0.06	1.84	1.84	0.33	
47			20	148			1.69	1.22	0.12	0.06	1.67	0.05	1.69	1.69	0.36	
48			21	149			1.47	1.20	0.10	0.12	1.63	0.06	1.63	1.63	0.38	
49			22	150			1.11	0.90	0.04	0.34	1.33	0.07	1.33	1.33	0.46	
50			23	151			1.71	1.11	0.15	0.16	1.85	0.05	1.85	1.85	0.33	
51			29	157			1.59	1.08	0.14	0.14	1.70	0.04	1.70	1.70	0.36	
52			30	158			1.52	1.29	0.16	0.08	1.59	0.05	1.59	1.59	0.39	
53			31	159			1.32	0.91	0.07	0.27	1.53	0.05	1.53	1.53	0.40	
54			32	160			1.40	1.11	0.07	0.23	1.78	0.07	1.78	1.78	0.35	

- K-patch Low CH



PD Simulation															
No.	Module	Type(P or D)	Beam ID_1	Bema ID_2	Feed no.	4cm2 PD(mW/cm2)						Max	Max. PD w/ MIMO rate	Scaling Factor	Note
						S2(Rear)	S1(Front)	S5(Top)	S6(Bottom)	S4(Right)	S3(Left)				
1			0			0.10	0.14	0.01	0.02	0.19	0.00	0.19	0.19	3.22	
2			2			0.13	0.13	0.02	0.01	0.26	0.01	0.26	0.26	2.39	
3			5			0.27	0.27	0.04	0.03	0.48	0.01	0.48	0.48	1.28	
4			6			0.21	0.29	0.04	0.02	0.42	0.01	0.42	0.42	1.48	
5			7			0.22	0.27	0.01	0.05	0.45	0.01	0.45	0.45	1.36	
6			8			0.21	0.28	0.04	0.01	0.45	0.01	0.45	0.45	1.36	
7			13			0.22	0.20	0.03	0.01	0.42	0.02	0.42	0.42	1.46	
8			14			0.18	0.28	0.04	0.03	0.35	0.01	0.35	0.35	1.79	
9			15			0.23	0.28	0.02	0.03	0.42	0.01	0.42	0.42	1.48	
10			19			0.43	0.41	0.05	0.08	0.77	0.02	0.77	0.77	0.81	
11			20			0.40	0.42	0.10	0.02	0.69	0.03	0.69	0.69	0.89	
12			21			0.41	0.63	0.06	0.04	0.74	0.02	0.74	0.74	0.84	
13			22			0.36	0.43	0.02	0.09	0.60	0.03	0.60	0.60	1.03	
14			23			0.41	0.49	0.09	0.03	0.82	0.02	0.82	0.82	0.75	
15			29			0.39	0.43	0.10	0.01	0.76	0.03	0.76	0.76	0.81	
16			30			0.44	0.50	0.06	0.05	0.70	0.03	0.70	0.70	0.88	
17			31			0.38	0.49	0.04	0.09	0.64	0.03	0.64	0.64	0.97	
18			32			0.38	0.43	0.03	0.08	0.65	0.02	0.65	0.65	0.95	
19			128			0.21	0.24	0.01	0.02	0.21	0.01	0.24	0.24	2.61	
20			130			0.19	0.13	0.00	0.01	0.18	0.00	0.19	0.19	3.22	
21			133			0.31	0.21	0.01	0.03	0.27	0.01	0.31	0.31	1.99	
22			134			0.34	0.24	0.01	0.01	0.34	0.01	0.34	0.34	1.80	
23			135			0.38	0.31	0.01	0.05	0.32	0.01	0.36	0.36	1.73	
24			136			0.36	0.40	0.01	0.03	0.36	0.02	0.40	0.40	1.54	
25			141			0.39	0.47	0.02	0.02	0.41	0.02	0.47	0.47	1.31	
26			142			0.30	0.21	0.00	0.02	0.33	0.01	0.33	0.33	1.88	
27			143			0.36	0.40	0.01	0.03	0.36	0.02	0.40	0.40	1.54	
28	Module 0	Patch	147			0.75	0.60	0.02	0.09	0.65	0.02	0.75	0.75	0.83	
29			148			0.69	0.67	0.03	0.03	0.72	0.03	0.72	0.72	0.85	
30			149			0.54	0.59	0.03	0.07	0.63	0.03	0.63	0.63	0.98	
31			150			0.52	0.47	0.02	0.10	0.58	0.03	0.58	0.58	1.06	
32			151			0.76	0.63	0.03	0.08	0.75	0.03	0.76	0.76	0.81	
33			157			0.72	0.68	0.02	0.07	0.70	0.03	0.72	0.72	0.86	
34			158			0.67	0.62	0.03	0.04	0.69	0.03	0.69	0.69	0.90	
35			159			0.52	0.54	0.02	0.11	0.61	0.03	0.61	0.61	1.01	
36			160			0.74	0.51	0.02	0.10	0.54	0.03	0.74	0.74	0.83	
37			0	128		0.38	0.48	0.02	0.05	0.45	0.01	0.48	0.48	1.28	
38			2	130		0.41	0.32	0.03	0.04	0.48	0.02	0.48	0.48	1.29	
39			5	133		0.64	0.52	0.05	0.06	0.75	0.03	0.75	0.75	0.83	
40			6	134		0.55	0.62	0.05	0.04	0.79	0.03	0.79	0.79	0.78	
41			7	135		0.81	0.65	0.02	0.13	0.90	0.04	0.90	0.90	0.69	
42			8	136		0.70	0.83	0.06	0.05	0.93	0.04	0.93	0.93	0.66	
43			13	141		0.64	0.67	0.06	0.04	0.83	0.04	0.83	0.83	0.75	
44			14	142		0.56	0.59	0.05	0.10	0.73	0.03	0.73	0.73	0.85	
45			15	143		0.73	0.84	0.04	0.09	0.95	0.04	0.95	0.95	0.65	
46			19	147		1.43	1.20	0.10	0.18	1.59	0.05	1.59	1.59	0.39	
47			20	148		1.29	1.42	0.16	0.07	1.51	0.07	1.51	1.51	0.41	
48			21	149		1.23	1.40	0.11	0.16	1.50	0.07	1.50	1.50	0.41	
49			22	150		1.30	1.23	0.05	0.28	1.60	0.09	1.60	1.60	0.39	
50			23	151		1.51	1.19	0.14	0.15	1.58	0.06	1.58	1.58	0.39	
51			29	157		1.33	1.27	0.17	0.13	1.49	0.05	1.49	1.49	0.41	
52			30	158		1.31	1.29	0.13	0.12	1.47	0.06	1.47	1.47	0.42	
53			31	159		1.31	1.27	0.06	0.33	1.52	0.08	1.52	1.52	0.40	
54			32	160		1.55	1.20	0.09	0.20	1.52	0.06	1.55	1.55	0.40	

- K-patch Mid CH



PD Simulation																
No.	Module	Type(P or D)	Beam ID_1	Bema ID_2	Feed no.	4cm2 PD(mW/cm2)							Max	Max. PD w/ MIMO rate	Scaling Factor	Note
						S2(Rear)	S1(Front)	S5(Top)	S6(Bottom)	S4(Right)	S3(Left)	S7				
1			0			0.08	0.10	0.02	0.02	0.14	0.00	0.14	0.14	4.31		
2			2			0.14	0.14	0.01	0.02	0.23	0.01	0.23	0.23	2.67		
3			5			0.25	0.27	0.03	0.02	0.43	0.01	0.43	0.43	1.44		
4			6			0.22	0.23	0.04	0.04	0.33	0.01	0.33	0.33	1.86		
5			7			0.24	0.31	0.01	0.03	0.41	0.01	0.41	0.41	1.49		
6			8			0.17	0.19	0.03	0.02	0.33	0.01	0.33	0.33	1.85		
7			13			0.24	0.23	0.02	0.02	0.39	0.01	0.39	0.39	1.58		
8			14			0.21	0.21	0.04	0.06	0.29	0.01	0.29	0.29	2.13		
9			15			0.23	0.28	0.02	0.03	0.40	0.01	0.40	0.40	1.54		
10			19			0.44	0.46	0.03	0.06	0.74	0.02	0.74	0.74	0.83		
11			20			0.37	0.50	0.08	0.03	0.62	0.02	0.62	0.62	0.99		
12			21			0.32	0.38	0.08	0.09	0.47	0.02	0.47	0.47	1.31		
13			22			0.44	0.49	0.02	0.05	0.63	0.03	0.63	0.63	0.97		
14			23			0.35	0.41	0.07	0.04	0.68	0.02	0.68	0.68	0.91		
15			29			0.36	0.49	0.08	0.02	0.64	0.02	0.64	0.64	0.96		
16			30			0.41	0.44	0.07	0.05	0.58	0.03	0.58	0.58	1.06		
17			31			0.34	0.49	0.04	0.10	0.58	0.02	0.58	0.58	1.06		
18			32			0.41	0.45	0.03	0.07	0.68	0.02	0.68	0.68	0.91		
19			128			0.20	0.24	0.01	0.01	0.19	0.01	0.24	0.24	2.62		
20			130			0.18	0.13	0.00	0.01	0.18	0.00	0.18	0.18	3.37		
21			133			0.28	0.23	0.00	0.02	0.25	0.01	0.28	0.28	2.17		
22			134			0.30	0.25	0.01	0.01	0.33	0.01	0.33	0.33	1.90		
23			135			0.37	0.31	0.01	0.03	0.32	0.02	0.37	0.37	1.65		
24			136			0.30	0.38	0.01	0.02	0.30	0.02	0.38	0.38	1.62		
25			141			0.32	0.45	0.01	0.01	0.28	0.02	0.45	0.45	1.38		
26			142			0.28	0.22	0.00	0.02	0.31	0.02	0.31	0.31	2.02		
27			143			0.30	0.38	0.01	0.02	0.30	0.02	0.38	0.38	1.62		
28	Module 0	Patch	147			0.49	0.51	0.02	0.06	0.47	0.02	0.51	0.51	1.20		
29			148			0.58	0.68	0.02	0.02	0.63	0.03	0.68	0.68	0.90		
30			149			0.53	0.63	0.02	0.05	0.62	0.04	0.63	0.63	0.98		
31			150			0.55	0.50	0.01	0.06	0.55	0.03	0.55	0.55	1.13		
32			151			0.53	0.50	0.03	0.03	0.54	0.02	0.54	0.54	1.14		
33			157			0.52	0.61	0.03	0.04	0.53	0.02	0.61	0.61	1.00		
34			158			0.60	0.67	0.02	0.02	0.65	0.04	0.67	0.67	0.91		
35			159			0.55	0.55	0.02	0.07	0.58	0.03	0.58	0.58	1.07		
36			160			0.49	0.46	0.02	0.07	0.45	0.03	0.49	0.49	1.27		
37			0	128		0.36	0.43	0.02	0.06	0.42	0.02	0.43	0.43	1.43		
38			2	130		0.46	0.36	0.02	0.04	0.49	0.01	0.49	0.49	1.26		
39			5	133		0.64	0.51	0.05	0.05	0.74	0.03	0.74	0.74	0.84		
40			6	134		0.58	0.59	0.05	0.06	0.68	0.04	0.68	0.68	0.91		
41			7	135		0.84	0.69	0.03	0.10	0.90	0.03	0.90	0.90	0.68		
42			8	136		0.61	0.70	0.06	0.05	0.86	0.03	0.86	0.86	0.71		
43			13	141		0.56	0.64	0.05	0.04	0.68	0.04	0.68	0.68	0.90		
44			14	142		0.58	0.54	0.06	0.12	0.67	0.03	0.67	0.67	0.92		
45			15	143		0.70	0.71	0.04	0.08	0.86	0.03	0.86	0.86	0.72		
46			19	147		1.44	1.16	0.11	0.13	1.69	0.05	1.69	1.69	0.37		
47			20	148		1.20	1.45	0.15	0.07	1.32	0.07	1.45	1.45	0.43		
48			21	149		1.16	1.24	0.14	0.22	1.34	0.08	1.34	1.34	0.46		
49			22	150		1.37	1.34	0.04	0.18	1.57	0.06	1.57	1.57	0.39		
50			23	151		1.24	1.17	0.13	0.07	1.59	0.07	1.59	1.59	0.39		
51			29	157		1.10	1.27	0.15	0.06	1.34	0.06	1.34	1.34	0.46		
52			30	158		1.24	1.25	0.13	0.11	1.28	0.08	1.28	1.28	0.48		
53			31	159		1.30	1.34	0.08	0.31	1.51	0.07	1.51	1.51	0.41		
54			32	160		1.42	1.14	0.07	0.17	1.67	0.06	1.67	1.67	0.37		

- K-patch High CH

3.1.2 Ant L – Patch Antenna

Table 6 & Table 7 show the PD simulation evaluation of Ant L patch antenna at 28GHz / 39GHz for the corresponding evaluation plane specified in Table 1.

Table 6. PD of Ant L – patch antenna (28GHz – n261)

No.	Module	Type(P or D)	Beam ID 1	Bema ID 2	Feed no.	4cm2 PD(mW/cm2)							Max. PD w/ MIMO rate	Scaling Factor	Note
						S2(Rear)	S1(Front)	S5(Top)	S6(Bottom)	S4(Right)	S3(Left)	Max			
55			1			0.12	0.26	0.01	0.01	0.01	0.36	0.36	0.36	1.71	
56			3			0.10	0.24	0.01	0.01	0.01	0.29	0.29	0.29	2.13	
57			8			0.20	0.49	0.02	0.04	0.03	0.58	0.58	0.58	1.06	
58			9			0.30	0.60	0.01	0.02	0.02	0.73	0.73	0.73	0.84	
59			10			0.26	0.68	0.01	0.01	0.02	0.79	0.79	0.79	0.78	
60			11			0.19	0.39	0.02	0.03	0.02	0.58	0.58	0.58	1.06	
61			15			0.26	0.46	0.02	0.03	0.02	0.63	0.63	0.63	0.99	
62			16			0.29	0.70	0.01	0.01	0.03	0.80	0.80	0.80	0.77	
63			17			0.22	0.55	0.02	0.02	0.02	0.67	0.67	0.67	0.92	
64			23			0.38	0.62	0.08	0.07	0.04	0.89	0.89	0.89	0.69	
65			24			0.49	1.15	0.02	0.03	0.06	1.34	1.34	1.34	0.46	
66			25			0.51	1.14	0.01	0.02	0.04	1.29	1.29	1.29	0.48	
67			26			0.44	1.15	0.02	0.02	0.04	1.32	1.32	1.32	0.47	
68			27			0.38	0.81	0.06	0.06	0.05	1.04	1.04	1.04	0.59	
69			32			0.45	0.93	0.06	0.04	0.05	1.23	1.23	1.23	0.50	
70			33			0.52	1.13	0.01	0.02	0.05	1.33	1.33	1.33	0.46	
71			34			0.48	1.13	0.02	0.02	0.04	1.27	1.27	1.27	0.49	
72			35			0.41	1.03	0.04	0.03	0.04	1.25	1.25	1.25	0.49	
73			129			0.26	0.08	0.03	0.01	0.01	0.23	0.26	0.26	2.35	
74			131			0.38	0.07	0.01	0.02	0.00	0.15	0.18	0.18	3.33	
75			136			0.42	0.18	0.02	0.05	0.01	0.36	0.42	0.42	1.47	
76			137			0.55	0.20	0.01	0.03	0.02	0.49	0.55	0.55	1.12	
77			138			0.38	0.14	0.08	0.02	0.02	0.37	0.38	0.38	1.60	
78			139			0.32	0.15	0.11	0.04	0.02	0.28	0.32	0.32	1.92	
79			143			0.47	0.19	0.03	0.05	0.01	0.42	0.47	0.47	1.30	
80			144			0.55	0.19	0.02	0.01	0.02	0.50	0.55	0.55	1.12	
81	Module 1	Patch	145			0.40	0.14	0.07	0.02	0.02	0.38	0.40	0.40	1.53	
82			151			0.80	0.35	0.05	0.21	0.03	0.65	0.80	0.80	0.77	
83			152			0.89	0.34	0.02	0.06	0.03	0.74	0.89	0.89	0.69	
84			153			0.92	0.32	0.02	0.02	0.03	0.87	0.92	0.92	0.67	
85			154			0.89	0.33	0.04	0.03	0.04	0.83	0.89	0.89	0.69	
86			155			0.59	0.33	0.25	0.04	0.04	0.52	0.59	0.59	1.05	
87			160			0.83	0.34	0.04	0.18	0.03	0.65	0.83	0.83	0.74	
88			161			0.93	0.34	0.01	0.02	0.04	0.85	0.93	0.93	0.66	
89			162			0.93	0.30	0.02	0.02	0.03	0.86	0.93	0.93	0.67	
90			163			0.67	0.27	0.17	0.03	0.04	0.60	0.67	0.67	0.91	
91			1	129		0.44	0.42	0.04	0.03	0.02	0.63	0.63	0.63	0.98	
92			3	131		0.31	0.38	0.02	0.05	0.02	0.45	0.45	0.45	1.36	
93			8	136		0.80	0.77	0.06	0.12	0.05	1.01	1.01	1.01	0.61	
94			9	137		1.03	0.96	0.02	0.07	0.06	1.22	1.22	1.22	0.50	
95			10	138		0.64	0.95	0.11	0.03	0.05	1.24	1.24	1.24	0.50	
96			11	139		0.58	0.60	0.17	0.08	0.04	1.01	1.01	1.01	0.61	
97			15	143		0.92	0.75	0.05	0.11	0.05	1.12	1.12	1.12	0.55	
98			16	144		1.00	1.06	0.02	0.03	0.06	1.33	1.33	1.33	0.46	
99			17	145		0.74	0.85	0.11	0.04	0.04	1.20	1.20	1.20	0.52	
100			23	151		1.68	1.06	0.17	0.38	0.07	2.06	2.06	2.06	0.30	
101			24	152		1.67	1.66	0.04	0.11	0.13	2.14	2.14	2.14	0.29	
102			25	153		1.65	1.68	0.05	0.05	0.10	2.15	2.15	2.15	0.29	
103			26	154		1.48	1.77	0.09	0.07	0.07	2.40	2.40	2.40	0.26	
104			27	155		1.38	1.27	0.43	0.13	0.10	1.98	1.98	1.98	0.31	
105			32	160		1.65	1.35	0.11	0.28	0.10	2.20	2.20	2.20	0.28	
106			33	161		1.74	1.70	0.04	0.06	0.14	2.09	2.09	2.09	0.30	
107			34	162		1.62	1.69	0.06	0.06	0.08	2.25	2.25	2.25	0.27	
108			35	163		1.36	1.59	0.31	0.07	0.08	2.27	2.27	2.27	0.27	

- L-patch Low CH





PD Simulation															
No.	Module	Type(P or D)	Beam ID_1	Bema ID_2	Feed no.	4cm2 PD(mW/cm2)						Max	Max. PD w/ MIMO rate	Scaling Factor	Note
						S2(Rear)	S1(Front)	S5(Top)	S6(Bottom)	S4(Right)	S3(Left)				
55			1			0.14	0.24	0.01	0.01	0.01	0.37	0.37	0.37	1.68	
56			3			0.11	0.22	0.01	0.01	0.01	0.29	0.29	0.29	2.12	
57			8			0.21	0.49	0.03	0.03	0.02	0.61	0.61	0.61	1.01	
58			9			0.30	0.57	0.01	0.02	0.02	0.72	0.72	0.72	0.85	
59			10			0.28	0.66	0.02	0.01	0.02	0.77	0.77	0.77	0.80	
60			11			0.21	0.37	0.03	0.03	0.02	0.59	0.59	0.59	1.04	
61			15			0.27	0.45	0.02	0.03	0.02	0.63	0.63	0.63	0.98	
62			16			0.30	0.66	0.01	0.02	0.02	0.79	0.79	0.79	0.78	
63			17			0.24	0.53	0.03	0.01	0.02	0.67	0.67	0.67	0.92	
64			23			0.41	0.66	0.07	0.08	0.04	0.98	0.98	0.98	0.63	
65			24			0.52	1.09	0.02	0.03	0.05	1.33	1.33	1.33	0.46	
66			25			0.54	1.06	0.02	0.01	0.04	1.27	1.27	1.27	0.48	
67			26			0.47	1.06	0.03	0.01	0.04	1.26	1.26	1.26	0.49	
68			27			0.41	0.78	0.08	0.06	0.04	1.02	1.02	1.02	0.60	
69			32			0.47	0.92	0.05	0.05	0.05	1.27	1.27	1.27	0.49	
70			33			0.54	1.04	0.01	0.02	0.04	1.30	1.30	1.30	0.47	
71			34			0.51	1.06	0.02	0.02	0.03	1.24	1.24	1.24	0.50	
72			35			0.45	0.96	0.06	0.03	0.04	1.20	1.20	1.20	0.52	
73			129			0.26	0.09	0.03	0.01	0.01	0.23	0.26	0.26	2.36	
74			131			0.18	0.07	0.01	0.02	0.00	0.15	0.18	0.18	3.48	
75			136			0.41	0.18	0.02	0.05	0.01	0.36	0.41	0.41	1.51	
76			137			0.53	0.20	0.01	0.03	0.02	0.48	0.53	0.53	1.16	
77			138			0.37	0.14	0.07	0.01	0.02	0.36	0.37	0.37	1.67	
78			139			0.32	0.14	0.10	0.04	0.02	0.29	0.32	0.32	1.91	
79			143			0.47	0.19	0.03	0.05	0.02	0.41	0.47	0.47	1.31	
80			144			0.52	0.20	0.02	0.01	0.02	0.49	0.52	0.52	1.18	
81			145			0.39	0.14	0.06	0.02	0.02	0.38	0.39	0.39	1.57	
82	Module 1	Patch	151			0.75	0.34	0.05	0.19	0.03	0.62	0.75	0.75	0.82	
83			152			0.85	0.33	0.02	0.06	0.04	0.71	0.85	0.85	0.73	
84			153			0.86	0.33	0.02	0.02	0.03	0.84	0.86	0.86	0.71	
85			154			0.84	0.31	0.05	0.03	0.04	0.78	0.84	0.84	0.73	
86			155			0.56	0.28	0.23	0.05	0.03	0.55	0.56	0.56	1.10	
87			160			0.80	0.32	0.04	0.17	0.03	0.63	0.80	0.80	0.77	
88			161			0.87	0.35	0.01	0.02	0.04	0.82	0.87	0.87	0.71	
89			162			0.87	0.31	0.02	0.01	0.03	0.83	0.87	0.87	0.71	
90			163			0.65	0.26	0.16	0.04	0.03	0.59	0.65	0.65	0.95	
91			1	129		0.47	0.41	0.05	0.03	0.03	0.65	0.65	0.65	0.95	
92			3	131		0.31	0.37	0.02	0.04	0.02	0.46	0.46	0.46	1.33	
93			8	136		0.79	0.77	0.06	0.11	0.05	1.05	1.05	1.05	0.59	
94			9	137		1.05	0.93	0.03	0.07	0.06	1.21	1.21	1.21	0.51	
95			10	138		0.63	0.93	0.12	0.02	0.05	1.24	1.24	1.24	0.50	
96			11	139		0.59	0.58	0.19	0.07	0.04	1.07	1.07	1.07	0.58	
97			15	143		0.94	0.73	0.07	0.10	0.05	1.14	1.14	1.14	0.54	
98			16	144		1.01	1.06	0.03	0.04	0.06	1.32	1.32	1.32	0.47	
99			17	145		0.76	0.96	0.12	0.04	0.04	1.25	1.25	1.25	0.49	
100			23	151		1.66	1.11	0.17	0.35	0.08	2.16	2.16	2.16	0.29	
101			24	152		1.66	1.58	0.04	0.13	0.14	2.06	2.06	2.06	0.30	
102			25	153		1.66	1.66	0.05	0.05	0.11	2.15	2.15	2.15	0.29	
103			26	154		1.45	1.69	0.11	0.07	0.08	2.34	2.34	2.34	0.26	
104			27	155		1.41	1.28	0.45	0.14	0.09	2.10	2.10	2.10	0.29	
105			32	160		1.65	1.28	0.12	0.28	0.11	2.25	2.25	2.25	0.27	
106			33	161		1.71	1.65	0.04	0.06	0.13	2.02	2.02	2.02	0.31	
107			34	162		1.60	1.65	0.07	0.04	0.08	2.24	2.24	2.24	0.28	
108			35	163		1.39	1.54	0.33	0.07	0.07	2.27	2.27	2.27	0.27	

- L-patch Mid CH



PD Simulation																
No.	Module	Type/P or D	Beam ID.1	Beam ID.2	Feed no.	4cm2 PD(mW/cm2)						Max	Max. PD w/ MIMO rate	Scaling Factor	Note	
						S2(Rear)	S1(Front)	S5(Top)	S6(Bottom)	S4(Right)	S3(Left)					
55	Module 1	Patch	1			0.14	0.23	0.01	0.01	0.01	0.36	0.36	0.36	1.69		
56			3			0.12	0.21	0.01	0.01	0.01	0.28	0.28	0.28	2.18		
57			8			0.21	0.46	0.03	0.03	0.02	0.61	0.61	0.61	1.01		
58			9			0.29	0.54	0.01	0.03	0.02	0.71	0.71	0.71	0.87		
59			10			0.28	0.63	0.02	0.01	0.02	0.75	0.75	0.75	0.83		
60			11			0.21	0.34	0.03	0.02	0.01	0.58	0.58	0.58	1.06		
61			15			0.27	0.43	0.02	0.03	0.02	0.63	0.63	0.63	0.98		
62			16			0.30	0.63	0.01	0.02	0.02	0.77	0.77	0.77	0.80		
63			17			0.24	0.49	0.03	0.01	0.01	0.65	0.65	0.65	0.95		
64			23			0.44	0.68	0.07	0.07	0.04	1.04	1.04	1.04	0.60		
65			24			0.52	1.01	0.02	0.03	0.04	1.29	1.29	1.29	0.48		
66			25			0.54	1.00	0.02	0.01	0.03	1.24	1.24	1.24	0.50		
67			26			0.49	0.99	0.03	0.01	0.03	1.21	1.21	1.21	0.51		
68			27			0.41	0.73	0.09	0.06	0.04	0.98	0.98	0.98	0.63		
69			32			0.49	0.88	0.04	0.05	0.04	1.24	1.24	1.24	0.50		
70			33			0.54	0.98	0.02	0.02	0.04	1.27	1.27	1.27	0.49		
71			34			0.51	1.00	0.02	0.01	0.03	1.21	1.21	1.21	0.51		
72			35			0.47	0.90	0.07	0.03	0.03	1.15	1.15	1.15	0.53		
73			129			0.24	0.09	0.03	0.01	0.01	0.22	0.24	0.24	2.57		
74			131			0.17	0.07	0.01	0.01	0.01	0.14	0.17	0.17	3.73		
75			136			0.38	0.17	0.02	0.04	0.01	0.33	0.38	0.38	1.62		
76			137			0.48	0.20	0.01	0.02	0.02	0.45	0.48	0.48	1.27		
77			138			0.34	0.13	0.07	0.01	0.02	0.34	0.34	0.34	1.82		
78			139			0.31	0.12	0.10	0.04	0.02	0.27	0.31	0.31	1.99		
79			143			0.43	0.19	0.03	0.04	0.02	0.38	0.43	0.43	1.43		
80			144			0.48	0.19	0.02	0.01	0.02	0.46	0.48	0.48	1.29		
81			145			0.37	0.14	0.06	0.02	0.01	0.36	0.37	0.37	1.68		
82			151			0.70	0.33	0.05	0.16	0.03	0.57	0.70	0.70	0.88		
83			152			0.77	0.31	0.01	0.06	0.03	0.65	0.77	0.77	0.81		
84			153			0.77	0.32	0.02	0.02	0.04	0.78	0.78	0.78	0.79		
85			154			0.75	0.29	0.04	0.02	0.03	0.71	0.75	0.75	0.82		
86			155			0.56	0.24	0.22	0.04	0.03	0.52	0.56	0.56	1.10		
87			160			0.73	0.31	0.04	0.14	0.03	0.59	0.73	0.73	0.84		
88			161			0.78	0.33	0.01	0.02	0.04	0.75	0.78	0.78	0.79		
89			162			0.77	0.30	0.02	0.01	0.03	0.76	0.77	0.77	0.80		
90			163			0.63	0.25	0.15	0.03	0.03	0.56	0.63	0.63	0.98		
91			1	129			0.46	0.39	0.05	0.03	0.02	0.64	0.64	0.64	0.97	
92			3	131			0.30	0.35	0.02	0.03	0.02	0.44	0.44	0.44	1.40	
93			8	136			0.79	0.73	0.05	0.10	0.05	1.04	1.04	1.04	0.59	
94			9	137			1.01	0.89	0.03	0.07	0.06	1.15	1.15	1.15	0.54	
95			10	138			0.61	0.90	0.12	0.02	0.05	1.21	1.21	1.21	0.51	
96			11	139			0.57	0.54	0.19	0.07	0.04	1.03	1.03	1.03	0.60	
97			15	143			0.91	0.69	0.07	0.10	0.05	1.11	1.11	1.11	0.55	
98			16	144			0.98	1.03	0.03	0.04	0.06	1.29	1.29	1.29	0.48	
99			17	145			0.73	0.82	0.13	0.04	0.03	1.22	1.22	1.22	0.51	
100			23	151			1.61	1.10	0.17	0.32	0.08	2.11	2.11	2.11	0.29	
101			24	152			1.59	1.47	0.04	0.13	0.13	1.98	1.98	1.98	0.31	
102			25	153			1.57	1.61	0.05	0.04	0.10	2.08	2.08	2.08	0.30	
103			26	154			1.38	1.59	0.12	0.06	0.08	2.24	2.24	2.24	0.28	
104			27	155			1.37	1.22	0.46	0.13	0.10	2.04	2.04	2.04	0.30	
105			32	160			1.61	1.20	0.11	0.28	0.10	2.17	2.17	2.17	0.28	
106			33	161			1.63	1.57	0.03	0.06	0.13	1.95	1.95	1.95	0.32	
107			34	162			1.48	1.60	0.07	0.04	0.09	2.15	2.15	2.15	0.29	
108			35	163			1.39	1.47	0.34	0.06	0.06	2.22	2.22	2.22	0.28	

- L-patch High CH



Table 7. PD of Ant L – patch antenna (39GHz – n260)

No.	Module	Type(P or D)	Beam ID.1	Bema ID.2	Feed no.	4cm2 PD(mW/cm2)							Max	Max. PD w/ MIMO ratio	Scaling Factor	Note
						S2(Rear)	S1(Front)	S5(Top)	S6(Bottom)	S4(Right)	S3(Left)	Max				
55			1			0.09	0.07	0.02	0.01	0.01	0.13	0.13	0.13	4.91		
56			3			0.15	0.14	0.01	0.01	0.00	0.27	0.27	0.27	2.32		
57			4			0.17	0.21	0.01	0.03	0.01	0.27	0.27	0.27	2.26		
58			9			0.24	0.37	0.01	0.07	0.02	0.41	0.41	0.41	1.50		
59			10			0.22	0.36	0.04	0.07	0.01	0.39	0.39	0.39	1.60		
60			11			0.28	0.35	0.03	0.01	0.01	0.43	0.43	0.43	1.42		
61			12			0.25	0.23	0.02	0.02	0.01	0.36	0.36	0.36	1.69		
62			16			0.20	0.36	0.03	0.10	0.02	0.38	0.38	0.38	1.62		
63			17			0.34	0.47	0.02	0.03	0.01	0.59	0.59	0.59	1.05		
64			18			0.29	0.35	0.03	0.02	0.01	0.44	0.44	0.44	1.39		
65			24			0.38	0.52	0.04	0.06	0.04	0.67	0.67	0.67	0.92		
66			25			0.51	0.61	0.02	0.15	0.02	0.80	0.80	0.80	0.77		
67			26			0.47	0.67	0.08	0.05	0.02	0.87	0.87	0.87	0.71		
68			27			0.41	0.51	0.08	0.04	0.03	0.62	0.62	0.62	1.00		
69			28			0.41	0.53	0.05	0.06	0.03	0.70	0.70	0.70	0.89		
70			33			0.40	0.52	0.05	0.14	0.04	0.66	0.66	0.66	0.94		
71			34			0.45	0.70	0.06	0.12	0.01	0.84	0.84	0.84	0.74		
72			35			0.47	0.61	0.09	0.02	0.02	0.76	0.76	0.76	0.81		
73			36			0.45	0.54	0.06	0.05	0.03	0.71	0.71	0.71	0.87		
74			129			0.24	0.19	0.03	0.01	0.01	0.21	0.24	0.24	2.56		
75			131			0.21	0.14	0.00	0.02	0.01	0.24	0.24	0.24	2.58		
76			132			0.18	0.15	0.00	0.02	0.01	0.17	0.18	0.18	3.33		
77			137			0.29	0.22	0.01	0.06	0.02	0.33	0.33	0.33	1.88		
78			138			0.39	0.29	0.01	0.04	0.03	0.44	0.44	0.44	1.39		
79			139			0.43	0.31	0.01	0.02	0.02	0.37	0.43	0.43	1.45		
80			140			0.40	0.32	0.03	0.01	0.02	0.40	0.40	0.40	1.53		
81			144			0.38	0.27	0.03	0.04	0.02	0.38	0.38	0.38	1.62		
82			145			0.45	0.31	0.04	0.03	0.02	0.48	0.48	0.48	1.28		
83	Module 1	Patch	146			0.43	0.34	0.04	0.01	0.02	0.45	0.45	0.45	1.37		
84			152			0.53	0.38	0.03	0.07	0.04	0.57	0.57	0.57	1.08		
85			153			0.55	0.43	0.03	0.13	0.04	0.63	0.63	0.63	0.97		
86			154			0.74	0.56	0.04	0.05	0.05	0.78	0.78	0.78	0.80		
87			155			0.72	0.58	0.05	0.03	0.04	0.71	0.72	0.72	0.86		
88			156			0.61	0.49	0.05	0.07	0.02	0.54	0.61	0.61	1.01		
89			161			0.52	0.41	0.03	0.11	0.04	0.60	0.60	0.60	1.02		
90			162			0.61	0.47	0.03	0.11	0.05	0.68	0.68	0.68	0.91		
91			163			0.78	0.60	0.06	0.02	0.04	0.79	0.79	0.79	0.78		
92			164			0.64	0.53	0.04	0.06	0.03	0.63	0.64	0.64	0.97		
93			1	129		0.36	0.28	0.07	0.05	0.02	0.37	0.37	0.37	1.65		
94			3	131		0.43	0.33	0.02	0.05	0.02	0.54	0.54	0.54	1.15		
95			4	132		0.37	0.38	0.02	0.08	0.02	0.45	0.45	0.45	1.38		
96			9	137		0.57	0.70	0.03	0.19	0.07	0.86	0.86	0.86	0.71		
97			10	138		0.60	0.74	0.06	0.18	0.04	0.90	0.90	0.90	0.68		
98			11	139		0.77	0.73	0.05	0.04	0.04	0.85	0.85	0.85	0.72		
99			12	140		0.70	0.56	0.07	0.04	0.03	0.81	0.81	0.81	0.76		
100			16	144		0.57	0.69	0.08	0.19	0.05	0.87	0.87	0.87	0.71		
101			17	145		0.80	0.89	0.10	0.10	0.04	1.17	1.17	1.17	0.53		
102			18	146		0.69	0.63	0.07	0.04	0.03	0.89	0.89	0.89	0.69		
103			24	152		1.12	1.10	0.09	0.18	0.13	1.42	1.42	1.42	0.43		
104			25	153		1.33	1.18	0.08	0.48	0.07	1.60	1.60	1.60	0.38		
105			26	154		1.40	1.34	0.19	0.15	0.08	1.67	1.67	1.67	0.37		
106			27	155		1.15	1.42	0.14	0.10	0.07	1.56	1.56	1.56	0.40		
107			28	156		1.14	1.30	0.13	0.14	0.08	1.27	1.30	1.30	0.47		
108			33	161		1.17	1.11	0.14	0.35	0.14	1.46	1.46	1.46	0.42		
109			34	162		1.22	1.37	0.14	0.39	0.07	1.67	1.67	1.67	0.37		
110			35	163		1.39	1.40	0.23	0.05	0.07	1.74	1.74	1.74	0.36		
111			36	164		1.17	1.29	0.10	0.13	0.06	1.31	1.31	1.31	0.47		

- L-patch Low CH



PD Simulation														
No.	Module	Type(P or D)	Beam ID.1	Bema ID.2	Feed no.	4cm2 PD(mW/cm2)						Max. PD w/ MIMO rate	Scaling Factor	Note
						S2(Rear)	S1(Front)	S5(Top)	S6(Bottom)	S4(Right)	S3(Left)			
55			1			0.11	0.10	0.01	0.01	0.00	0.16	0.16	3.80	
56			3			0.15	0.12	0.01	0.02	0.00	0.25	0.25	2.50	
57			4			0.13	0.23	0.01	0.02	0.01	0.26	0.26	2.34	
58			9			0.25	0.39	0.02	0.04	0.02	0.46	0.46	1.33	
59			10			0.17	0.41	0.05	0.04	0.01	0.37	0.41	1.51	
60			11			0.20	0.44	0.02	0.02	0.01	0.45	0.45	1.36	
61			12			0.25	0.28	0.02	0.02	0.01	0.40	0.40	1.55	
62			16			0.19	0.38	0.04	0.05	0.01	0.39	0.39	1.56	
63			17			0.26	0.41	0.03	0.04	0.01	0.51	0.51	1.21	
64			18			0.25	0.42	0.03	0.02	0.01	0.49	0.49	1.25	
65			24			0.40	0.57	0.03	0.06	0.04	0.73	0.73	0.84	
66			25			0.47	0.66	0.06	0.10	0.02	0.82	0.82	0.75	
67			26			0.38	0.65	0.07	0.10	0.02	0.78	0.78	0.79	
68			27			0.41	0.59	0.08	0.03	0.02	0.68	0.68	0.91	
69			28			0.40	0.60	0.05	0.06	0.03	0.75	0.75	0.83	
70			33			0.44	0.53	0.03	0.10	0.05	0.71	0.71	0.87	
71			34			0.40	0.74	0.10	0.10	0.02	0.82	0.82	0.75	
72			35			0.37	0.61	0.06	0.04	0.03	0.72	0.72	0.86	
73			36			0.41	0.60	0.06	0.06	0.02	0.75	0.75	0.82	
74			129			0.22	0.23	0.03	0.01	0.01	0.19	0.23	2.72	
75			131			0.23	0.17	0.00	0.02	0.01	0.25	0.25	2.49	
76			132			0.17	0.16	0.00	0.02	0.01	0.16	0.17	3.72	
77			137			0.29	0.25	0.01	0.06	0.02	0.34	0.34	1.83	
78			138			0.38	0.32	0.01	0.05	0.03	0.43	0.43	1.44	
79			139			0.44	0.36	0.01	0.02	0.02	0.38	0.44	1.42	
80			140			0.41	0.37	0.03	0.02	0.02	0.39	0.41	1.51	
81			144			0.35	0.33	0.03	0.04	0.02	0.36	0.36	1.70	
82			145			0.39	0.37	0.03	0.04	0.03	0.45	0.45	1.36	
83	Module 1	Patch	146			0.42	0.38	0.03	0.01	0.03	0.43	0.43	1.43	
84			152			0.50	0.43	0.04	0.06	0.03	0.52	0.52	1.20	
85			153			0.49	0.46	0.03	0.14	0.03	0.57	0.57	1.08	
86			154			0.66	0.59	0.04	0.06	0.05	0.69	0.69	0.90	
87			155			0.70	0.68	0.04	0.03	0.05	0.73	0.73	0.84	
88			156			0.59	0.61	0.04	0.07	0.03	0.58	0.61	1.02	
89			161			0.48	0.45	0.03	0.09	0.04	0.56	0.56	1.10	
90			162			0.54	0.52	0.03	0.13	0.05	0.61	0.61	1.01	
91			163			0.71	0.62	0.05	0.02	0.05	0.72	0.72	0.86	
92			164			0.60	0.64	0.03	0.05	0.03	0.66	0.66	0.94	
93			1	129		0.41	0.40	0.07	0.03	0.02	0.45	0.45	1.37	
94			3	131		0.45	0.36	0.02	0.06	0.02	0.50	0.50	1.22	
95			4	132		0.32	0.44	0.02	0.08	0.02	0.45	0.45	1.38	
96			9	137		0.61	0.74	0.03	0.15	0.07	0.89	0.89	0.69	
97			10	138		0.63	0.82	0.06	0.15	0.05	0.86	0.86	0.71	
98			11	139		0.66	0.94	0.04	0.05	0.05	0.95	0.95	0.65	
99			12	140		0.78	0.71	0.06	0.04	0.04	0.96	0.96	0.64	
100			16	144		0.56	0.65	0.07	0.11	0.04	0.77	0.77	0.81	
101			17	145		0.75	0.87	0.09	0.13	0.04	1.08	1.08	0.57	
102			18	146		0.64	0.74	0.05	0.05	0.04	0.97	0.97	0.64	
103			24	152		1.29	1.27	0.10	0.15	0.12	1.41	1.41	0.44	
104			25	153		1.22	1.27	0.11	0.39	0.07	1.47	1.47	0.42	
105			26	154		1.26	1.44	0.17	0.26	0.10	1.48	1.48	0.42	
106			27	155		1.31	1.75	0.11	0.09	0.10	1.85	1.85	0.33	
107			28	156		1.25	1.72	0.11	0.17	0.09	1.50	1.72	0.36	
108			33	161		1.17	1.11	0.08	0.30	0.13	1.36	1.36	0.45	
109			34	162		1.26	1.43	0.17	0.38	0.08	1.52	1.52	0.41	
110			35	163		1.22	1.57	0.17	0.09	0.10	1.76	1.76	0.35	
111			36	164		1.15	1.69	0.10	0.14	0.07	1.56	1.69	0.36	

L-patch Mid CH



PD Simulation															
No.	Module	Type(P or D)	Beam ID.1	Bema ID.2	Feed no.	4cm2 PD(mW/cm2)							Max. PD w/ MIMO rate	Scaling Factor	Note
						S2(Rear)	S1(Front)	S5(Top)	S6(Bottom)	S4(Right)	S3(Left)	Max			
55			1			0.09	0.12	0.02	0.01	0.01	0.16	0.16	0.16	3.75	
56			3			0.11	0.12	0.01	0.02	0.00	0.20	0.20	0.20	3.04	
57			4			0.09	0.26	0.01	0.03	0.01	0.25	0.26	0.26	2.39	
58			9			0.18	0.48	0.02	0.03	0.01	0.48	0.48	0.48	1.28	
59			10			0.12	0.37	0.05	0.06	0.01	0.28	0.37	0.37	1.67	
60			11			0.14	0.47	0.02	0.03	0.01	0.42	0.47	0.47	1.33	
61			12			0.19	0.27	0.02	0.02	0.01	0.36	0.36	0.36	1.70	
62			16			0.14	0.40	0.04	0.05	0.01	0.35	0.40	0.40	1.54	
63			17			0.17	0.35	0.04	0.05	0.01	0.38	0.38	0.38	1.62	
64			18			0.17	0.51	0.02	0.03	0.01	0.51	0.51	0.51	1.21	
65			24			0.30	0.66	0.04	0.05	0.04	0.77	0.77	0.77	0.81	
66			25			0.32	0.54	0.08	0.12	0.02	0.63	0.63	0.63	0.98	
67			26			0.28	0.59	0.08	0.09	0.02	0.62	0.62	0.62	0.99	
68			27			0.32	0.73	0.06	0.03	0.02	0.76	0.76	0.76	0.81	
69			31			0.31	0.67	0.04	0.05	0.03	0.74	0.74	0.74	0.84	
70			33			0.38	0.66	0.02	0.07	0.04	0.79	0.79	0.79	0.78	
71			34			0.27	0.48	0.12	0.12	0.02	0.52	0.52	0.52	1.18	
72			35			0.26	0.70	0.07	0.04	0.02	0.68	0.70	0.70	0.88	
73			36			0.33	0.70	0.05	0.05	0.03	0.75	0.75	0.75	0.82	
74			129			0.16	0.21	0.02	0.01	0.01	0.13	0.21	0.21	3.00	
75			131			0.24	0.17	0.00	0.02	0.01	0.23	0.24	0.24	2.62	
76			132			0.16	0.16	0.00	0.02	0.01	0.14	0.16	0.16	3.84	
77			137			0.37	0.26	0.01	0.05	0.02	0.30	0.37	0.37	1.67	
78			138			0.37	0.29	0.01	0.05	0.02	0.38	0.38	0.38	1.63	
79			139			0.39	0.40	0.01	0.02	0.02	0.38	0.40	0.40	1.56	
80			140			0.34	0.35	0.02	0.02	0.02	0.32	0.35	0.35	1.74	
81			144			0.33	0.32	0.03	0.03	0.02	0.29	0.33	0.33	1.87	
82			145			0.37	0.33	0.02	0.04	0.03	0.36	0.37	0.37	1.69	
83	Module 1	Patch	146			0.36	0.36	0.02	0.02	0.03	0.35	0.36	0.36	1.71	
84			152			0.56	0.41	0.03	0.05	0.03	0.39	0.56	0.56	1.10	
85			153			0.53	0.40	0.03	0.10	0.04	0.47	0.53	0.53	1.17	
86			154			0.59	0.52	0.03	0.06	0.04	0.60	0.60	0.60	1.04	
87			155			0.58	0.70	0.02	0.02	0.04	0.65	0.70	0.70	0.89	
88			156			0.54	0.61	0.03	0.05	0.03	0.52	0.61	0.61	1.00	
89			161			0.52	0.40	0.03	0.08	0.03	0.41	0.52	0.52	1.19	
90			162			0.55	0.46	0.03	0.09	0.04	0.56	0.56	0.56	1.10	
91			163			0.58	0.60	0.03	0.04	0.04	0.60	0.60	0.60	1.03	
92			164			0.56	0.64	0.02	0.03	0.03	0.59	0.64	0.64	0.97	
93			1	129		0.38	0.43	0.08	0.02	0.02	0.41	0.43	0.43	1.45	
94			3	131		0.43	0.37	0.02	0.07	0.02	0.44	0.44	0.44	1.41	
95			4	132		0.28	0.50	0.02	0.08	0.02	0.42	0.50	0.50	1.24	
96			9	137		0.64	0.79	0.02	0.13	0.04	0.90	0.90	0.90	0.69	
97			10	138		0.56	0.75	0.06	0.17	0.05	0.75	0.75	0.75	0.82	
98			11	139		0.59	1.04	0.04	0.06	0.04	0.92	1.04	1.04	0.59	
99			12	140		0.67	0.69	0.07	0.06	0.04	0.86	0.86	0.86	0.72	
100			16	144		0.50	0.65	0.07	0.10	0.03	0.70	0.70	0.70	0.88	
101			17	145		0.59	0.76	0.08	0.16	0.05	0.81	0.81	0.81	0.76	
102			18	146		0.54	0.83	0.03	0.07	0.04	0.83	0.93	0.93	0.67	
103			24	152		1.19	1.44	0.10	0.15	0.09	1.27	1.44	1.44	0.43	
104			25	153		1.18	1.14	0.16	0.37	0.08	1.35	1.35	1.35	0.46	
105			26	154		1.08	1.31	0.16	0.26	0.09	1.26	1.31	1.31	0.47	
106			27	155		1.13	1.92	0.09	0.08	0.09	1.82	1.92	1.92	0.32	
107			28	156		1.04	1.88	0.08	0.15	0.08	1.57	1.88	1.88	0.33	
108			33	161		1.22	1.19	0.08	0.25	0.12	1.40	1.40	1.40	0.44	
109			34	162		1.09	1.13	0.21	0.36	0.08	1.25	1.25	1.25	0.49	
110			35	163		1.00	1.58	0.15	0.14	0.09	1.47	1.58	1.58	0.39	
111			36	164		0.97	1.84	0.08	0.12	0.08	1.65	1.84	1.84	0.34	

- L-patch High CH