

Measurement Report for Device, EDGE TOP, Custom Band, UID 0 -, Channel Low 27559300 (27559.3MHz) In L-patch of NR Band n261

Device under Test Properties

Model, Manufacturer , Device	Dimensions [mm] 285.0 x 185.0 x 6.0	IMEI	DUT Type Notebook
---------------------------------	--	------	----------------------

Exposure Conditions

Phantom Section	Position, Test Distance [mm] EDGE TOP, 2.00	Band Custom Band	Group, UID CW, 0--	Frequency [MHz], Channel Number 27559.3, 27559300	Conversion Factor 1.0
-----------------	--	---------------------	-----------------------	--	--------------------------

Hardware Setup

Phantom mmWave- xxxx	Medium Air---	Probe, Calibration Date EUmmWV4 - SN9559_F1-55GHz, 2021-04-01	DAE, Calibration Date DAE4 Sn1667, 2021-04-08
-------------------------	------------------	--	--

Scan Setup

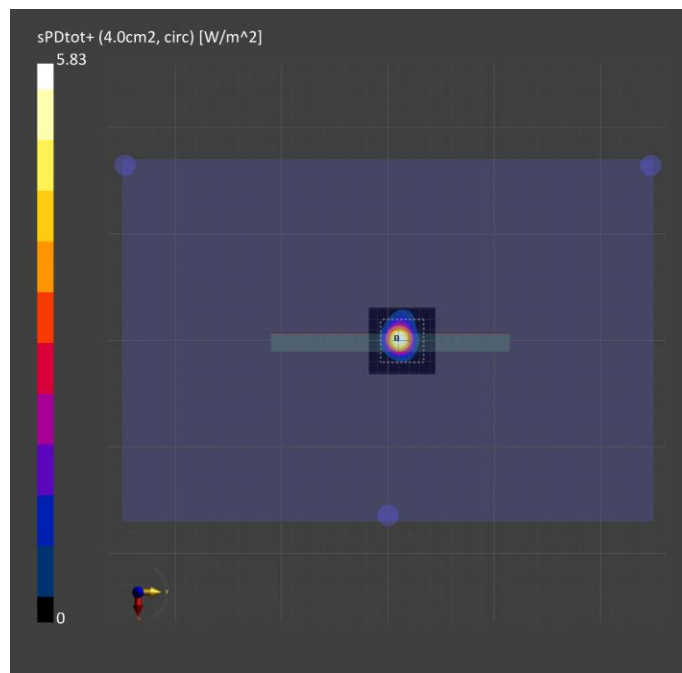
	5G Scan
Grid Extents [mm]	60.0 x 60.0
Grid Steps [lambda]	0.25 x 0.25
Sensor Surface [mm]	2.0
MAIA	N/A

Measurement Results

	5G Scan
Date	2021-06-04
Avg. Area [cm ²]	4.00
psPDn+ [W/m ²]	5.15
psPDtot+ [W/m ²]	5.83
psPDmod+ [W/m ²]	5.97
E _{max} [V/m]	80.3
Power Drift [dB]	0.04

Warning(s) / Error(s)

Details	5G Scan
Warning(s)	
Error(s)	



Device under Test Properties

Model, Manufacturer , Device	Dimensions [mm] 285.0 x 185.0 x 6.0	IMEI	DUT Type Notebook
---------------------------------	--	------	----------------------

Exposure Conditions

Phantom Section	Position, Test Distance [mm] EDGE TOP, 2.00	Band Custom Band	Group, UID CW, 0--	Frequency [MHz], Channel Number 27559.3, 27559300	Conversion Factor 1.0
-----------------	--	---------------------	-----------------------	--	--------------------------

Hardware Setup

Phantom mmWave- xxxx	Medium Air---	Probe, Calibration Date EUmmWV4 - SN9559_F1-55GHz, 2021-04-01	DAE, Calibration Date DAE4 Sn1670, 2021-05-06
-------------------------	------------------	--	--

Scan Setup

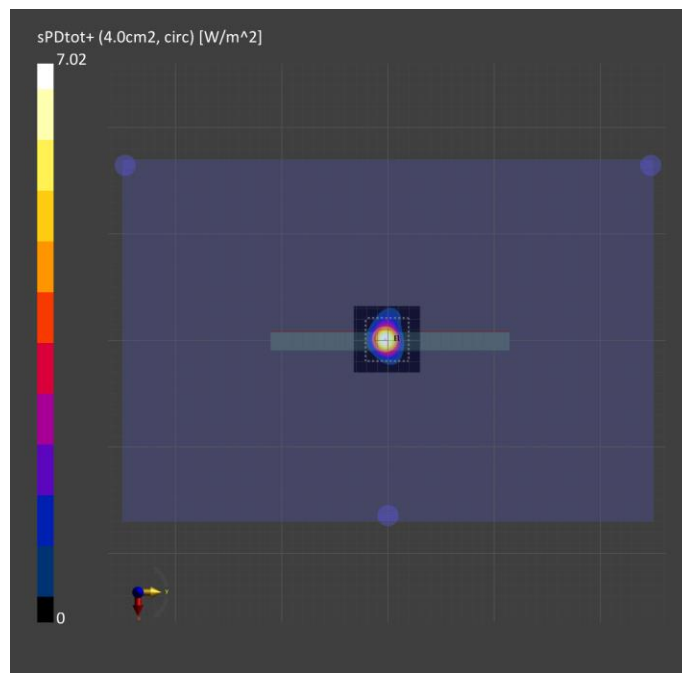
	5G Scan
Grid Extents [mm]	60.0 x 60.0
Grid Steps [lambda]	0.25 x 0.25
Sensor Surface [mm]	2.0
MAIA	N/A

Measurement Results

	5G Scan
Date	2021-06-11
Avg. Area [cm ²]	4.00
psPDn+ [W/m ²]	6.15
psPDtot+ [W/m ²]	7.02
psPDmod+ [W/m ²]	7.22
E _{max} [V/m]	94.0
Power Drift [dB]	-0.06

Warning(s) / Error(s)

Details	5G Scan
Warning(s)	
Error(s)	



Measurement Report for Device, EDGE TOP, Custom Band, UID 0 -, Channel Low 37051800 (37051.8MHz) in L-patch of NR Band n260

Device under Test Properties

Model, Manufacturer	Dimensions [mm]	IMEI	DUT Type
, Device	285.0 x 185.0 x 6.0		Notebook

Exposure Conditions

Phantom Section	Position, Test Distance [mm]	Band	Group, UID	Frequency [MHz], Channel Number	Conversion Factor
5G Air	EDGE TOP, 2.00	Custom Band	CW, 0--	37051.8, 37051800	1.0

Hardware Setup

Phantom	Medium	Probe, Calibration Date	DAE, Calibration Date
mmWave- 1082	Air---	EUmmWV4 - SN9536_F1-55GHz, 2021-04-24	DAE4 Sn1668, 2021-04-08

Scan Setup

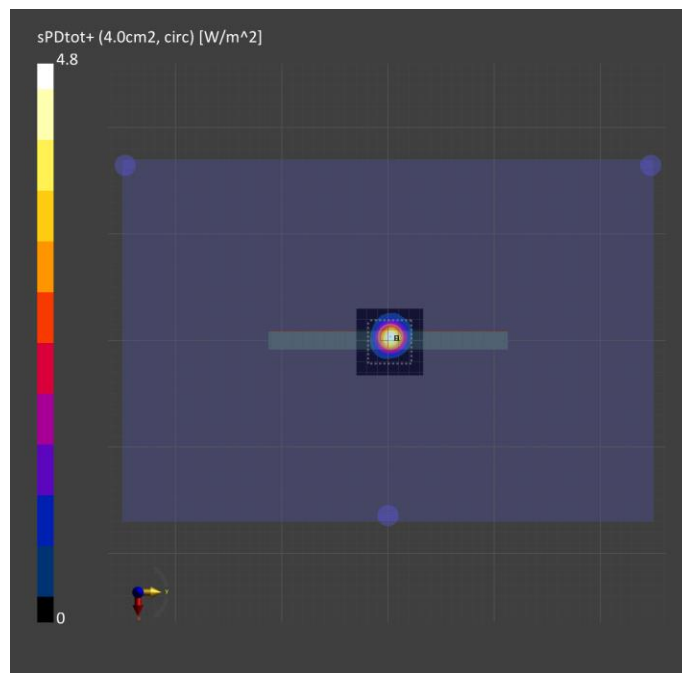
	5G Scan
Grid Extents [mm]	60.0 x 60.0
Grid Steps [lambda]	0.25 x 0.25
Sensor Surface [mm]	2.0
MAIA	N/A

Measurement Results

	5G Scan
Date	2021-06-09
Avg. Area [cm ²]	4.00
psPDn+ [W/m ²]	4.27
psPDtot+ [W/m ²]	4.80
psPDmod+ [W/m ²]	4.89
E _{max} [V/m]	66.6
Power Drift [dB]	-0.03

Warning(s) / Error(s)

Details	5G Scan
Warning(s)	
Error(s)	



Measurement Report for Device, EDGE TOP, Custom Band, UID 0 -, Channel Low 37051800 (37051.8MHz) in L-patch of NR Band n260

Device under Test Properties

Model, Manufacturer	Dimensions [mm]	IMEI	DUT Type
, Device	285.0 x 185.0 x 6.0		Notebook

Exposure Conditions

Phantom Section	Position, Test Distance [mm]	Band	Group, UID	Frequency [MHz], Channel Number	Conversion Factor
5G Air	EDGE TOP, 2.00	Custom Band	CW, 0--	37051.8, 37051800	1.0

Hardware Setup

Phantom	Medium	Probe, Calibration Date	DAE, Calibration Date
mmWave- 1082	Air---	EUmmWV4 - SN9536_F1-55GHz, 2021-04-24	DAE4 Sn1668, 2021-04-08

Scan Setup

	5G Scan
Grid Extents [mm]	60.0 x 60.0
Grid Steps [lambda]	0.25 x 0.25
Sensor Surface [mm]	2.0
MAIA	N/A

Measurement Results

	5G Scan
Date	2021-06-07
Avg. Area [cm ²]	4.00
psPDn+ [W/m ²]	4.68
psPDtot+ [W/m ²]	5.53
psPDmod+ [W/m ²]	5.80
E _{max} [V/m]	80.4
Power Drift [dB]	-0.09

Warning(s) / Error(s)

Details	5G Scan
Warning(s)	
Error(s)	

