

# Measurement Report for Device, FRONT, Custom Band, UID 0 -, Channel 30000000 (30000.0MHz)

## Device under Test Properties

Model, Manufacturer	Dimensions [mm]	IMEI	DUT Type
, Device	100.0 x 100.0 x 100.0		Reference source

## Exposure Conditions

Phantom Section	Position, Test Distance [mm]	Band	Group, UID	Frequency [MHz], Channel Number	Conversion Factor
5G Air	FRONT, 5.55	Validation band	CW, 0--	30000.0, 30000000	1.0

## Hardware Setup

Phantom	Medium	Probe, Calibration Date	DAE, Calibration Date
mmWave- 1082	Air---	EUmmWV4 - SN9536_F1-55GHz, 2021-04-24	DAE4 Sn1668, 2021-04-08

## Scan Setup

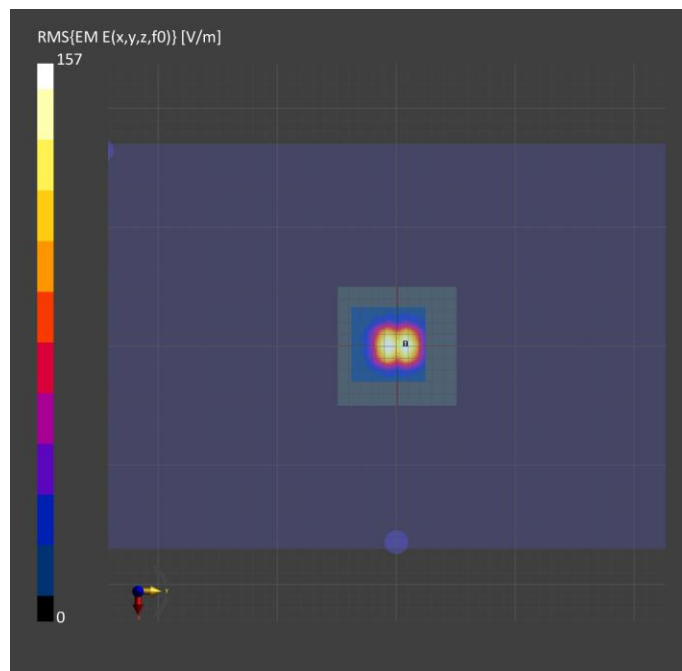
	5G Scan
Grid Extents [mm]	60.0 x 60.0
Grid Steps [lambda]	0.25 x 0.25
Sensor Surface [mm]	5.55
MAIA	N/A

## Measurement Results

	5G Scan
Date	2021-06-04
Avg. Area [cm <sup>2</sup> ]	4.00
psPDn+ [W/m <sup>2</sup> ]	44.3
psPDtot+ [W/m <sup>2</sup> ]	44.7
psPDmod+ [W/m <sup>2</sup> ]	44.9
E <sub>max</sub> [V/m]	156
Power Drift [dB]	-0.03

## Warning(s) / Error(s)

Details	5G Scan
Warning(s)	
Error(s)	



# Measurement Report for Device, FRONT, Custom Band, UID 0 -, Channel 30000000 (30000.0MHz)

## Device under Test Properties

Model, Manufacturer	Dimensions [mm]	IMEI	DUT Type
, Device	100.0 x 100.0 x 100.0		Reference source

## Exposure Conditions

Phantom Section	Position, Test Distance [mm]	Band	Group, UID	Frequency [MHz], Channel Number	Conversion Factor
5G Air	FRONT, 5.55	Validation band	CW, 0--	30000.0, 30000000	1.0

## Hardware Setup

Phantom	Medium	Probe, Calibration Date	DAE, Calibration Date
mmWave- 1082	Air---	EUmmWV4 - SN9536_F1-55GHz, 2021-04-24	DAE4 Sn1667, 2021-04-08

## Scan Setup

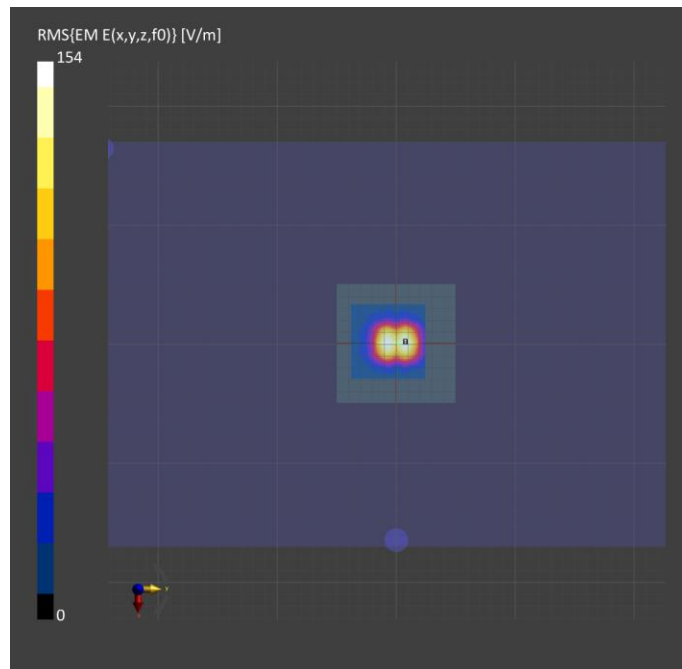
	5G Scan
Grid Extents [mm]	60.0 x 60.0
Grid Steps [lambda]	0.25 x 0.25
Sensor Surface [mm]	5.55
MAIA	N/A

## Measurement Results

	5G Scan
Date	2021-06-10
Avg. Area [cm <sup>2</sup> ]	4.00
psPDn+ [W/m <sup>2</sup> ]	42.5
psPDtot+ [W/m <sup>2</sup> ]	42.9
psPDmod+ [W/m <sup>2</sup> ]	43.1
E <sub>max</sub> [V/m]	153
Power Drift [dB]	-0.20

## Warning(s) / Error(s)

Details	5G Scan
Warning(s)	
Error(s)	



# Measurement Report for Device, FRONT, Validation band, UID 0 -, Channel 30000 (30000.0MHz)

## Device under Test Properties

Model, Manufacturer	Dimensions [mm]	IMEI	DUT Type
, Device	100.0 x 100.0 x 100.0		Reference source

## Exposure Conditions

Phantom Section	Position, Test Distance [mm]	Band	Group, UID	Frequency [MHz], Channel Number	Conversion Factor
5G Air	FRONT, 5.55	Validation band	CW, 0--	30000.0, 30000	1.0

## Hardware Setup

Phantom	Medium	Probe, Calibration Date	DAE, Calibration Date
mmWave- 1082	Air---	EUmmWV4 - SN9559_F1-55GHz, 2021-04-01	DAE4 Sn1667, 2021-04-08

## Scan Setup

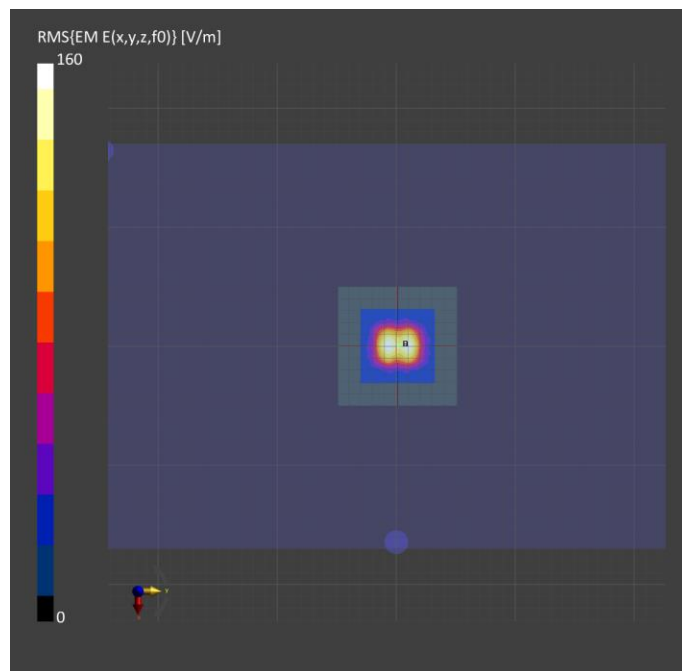
	5G Scan
Grid Extents [mm]	60.0 x 60.0
Grid Steps [lambda]	0.25 x 0.25
Sensor Surface [mm]	5.55
MAIA	N/A

## Measurement Results

	5G Scan
Date	2021-06-02
Avg. Area [cm <sup>2</sup> ]	4.00
psPDn+ [W/m <sup>2</sup> ]	46.5
psPDtot+ [W/m <sup>2</sup> ]	46.9
psPDmod+ [W/m <sup>2</sup> ]	47.1
E <sub>max</sub> [V/m]	157
Power Drift [dB]	-0.04

## Warning(s) / Error(s)

Details	5G Scan
Warning(s)	
Error(s)	



# Measurement Report for Device, FRONT, Validation band, UID 0 -, Channel 30000 (30000.0MHz)

## Device under Test Properties

Model, Manufacturer	Dimensions [mm]	IMEI	DUT Type
, Device	100.0 x 100.0 x 100.0		Reference source

## Exposure Conditions

Phantom Section	Position, Test Distance [mm]	Band	Group, UID	Frequency [MHz], Channel Number	Conversion Factor
5G Air	FRONT, 5.55	Validation band	CW, 0--	30000.0, 30000	1.0

## Hardware Setup

Phantom	Medium	Probe, Calibration Date	DAE, Calibration Date
mmWave- 1082	Air---	EUmmWV4 - SN9559_F1-55GHz, 2021-04-01	DAE4 Sn1667, 2021-04-08

## Scan Setup

	5G Scan
Grid Extents [mm]	60.0 x 60.0
Grid Steps [lambda]	0.25 x 0.25
Sensor Surface [mm]	5.55
MAIA	N/A

## Measurement Results

	5G Scan
Date	2021-06-03
Avg. Area [cm <sup>2</sup> ]	4.00
psPDn+ [W/m <sup>2</sup> ]	46.2
psPDtot+ [W/m <sup>2</sup> ]	46.7
psPDmod+ [W/m <sup>2</sup> ]	46.8
E <sub>max</sub> [V/m]	157
Power Drift [dB]	-0.05

## Warning(s) / Error(s)

Details	5G Scan
Warning(s)	
Error(s)	

