

Program Launcher (Optional)

The Program Launcher categorizes frequently used programs, folders, and websites so that you can easily manage and access them.
This program is designed for the small LCD size so that you can easily use this program with the Stylus Pen or your fingers.



It is optional and is not supplied with some models.

The terms and the screen figures in the manual may differ from actual ones.

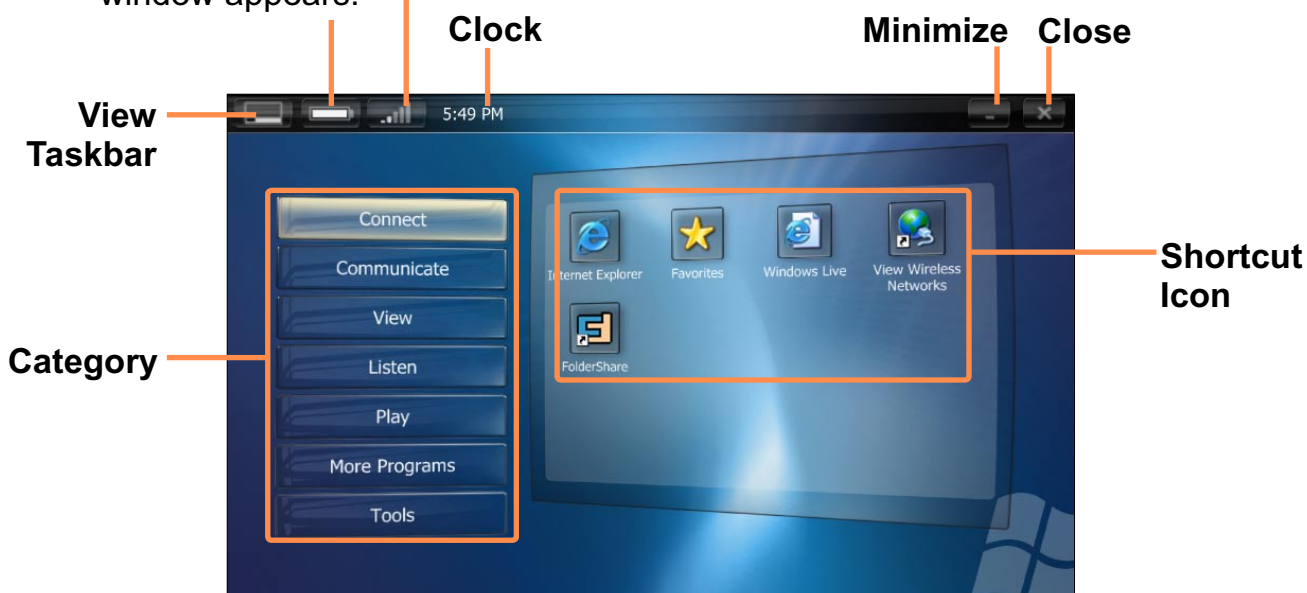
Program Launcher Screen Layout

To launch the Program Launcher, click **Start > All Programs > Microsoft Touch Pack for Tablet PC > Program Launcher**.

Battery Charge Status Wireless LAN Status

When clicking the icon, the Power Option Properties window appears.

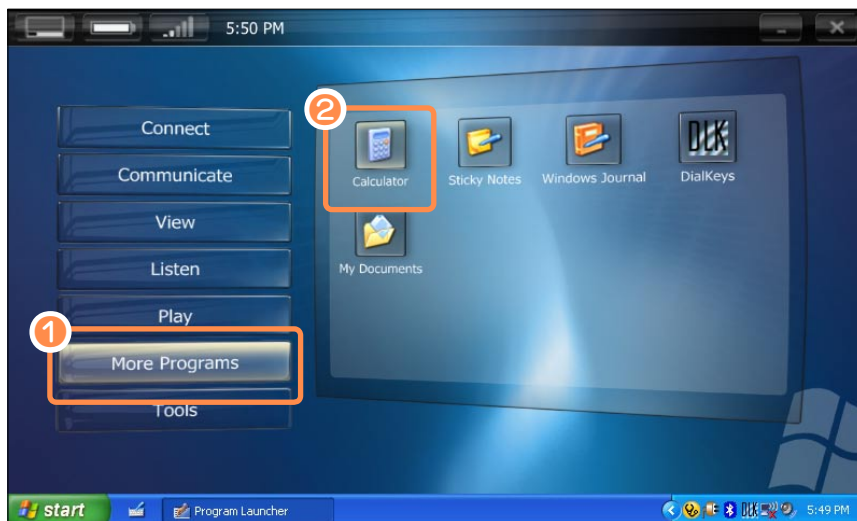
When clicking the icon, the Network Connections window appears.



Using Program Launcher

As an example, the procedures to launch the **Calculator** on the Program Launcher are described below.

- 1 Run the **Program Launcher**.
- 2 Select **More Programs > Calculator**. The Calculator program is launched.



■ For more detailed usage

For more detailed usage, click Program Launcher Help from the Tools category.

■ Program Launcher User Setting functions

You can add a category and add or delete a shortcut icon.

Click on Customize Launcher from the Tools category to change the settings.

CyberLink PowerDVD (Optional)

CyberLink PowerDVD is a DVD player program.



The CyberLink PowerDVD program can only be used when you have purchased an CD/DVD drive, and you have installed the program. It is optional and is not supplied with some models.

- 1 Insert a DVD title into the CD/DVD drive.
- 2 Select **Play DVD Video Using PowerDVD** and click the **OK** button.
After a moment, the DVD title will play.



- 3 If the DVD title is not automatically played, click **Start > All Programs > CyberLink PowerDVD > CyberLink PowerDVD**.
- 4 Then click the Play icon in the control panel of CyberLink PowerDVD to play the DVD title.



Play

Settings



■ Detailed Usage

For more detailed usage, click **Start > All Programs > CyberLink PowerDVD > PowerDVD Help**.

■ DVD Region Code

A DVD title has a region code according to the international specifications so that it can be played only in that specific region.

DVD titles with a region code will only play on DVD drives and program for playing with the same region code.

A DVD drive is sold with an empty region code and the region code is set when the user inserts a DVD title into the drive for the first time. Whenever a DVD title is inserted with a region code different from that of the DVD drive, the region code of the DVD drive is automatically changed to the region code of the DVD title.

However, changing the region code of a DVD drive is limited to 5 changes. After that, the region code is permanently fixed to the last region code. If you need to change the region code after changing the code 5 times, contact a service center. Although a service center can help you in this case, you will be charged a service fee.

Samsung Update Plus (Optional)

Samsung Update Plus is software that examines and updates the Samsung software and drivers installed on your Samsung computer to the latest version.



- To search for updates and update your computer using Samsung Update Plus, your computer must be connected to the Internet.
- The update search result may differ depending on your computer model.



Samsung Update Plus does not provide updates for applications installed after purchasing the computer.

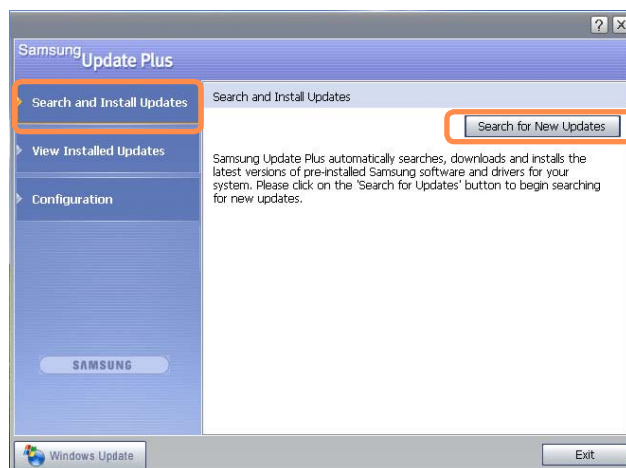
To update the software and drivers

- 1 Click **Start > All Programs > Samsung > Samsung Update Plus > Samsung Update Plus**.

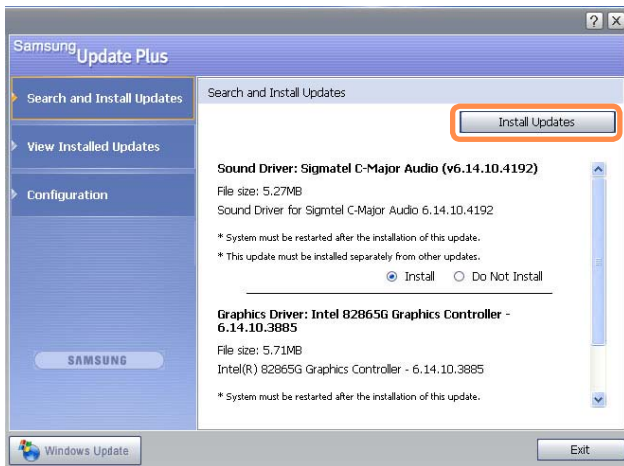


If this is the first time you are running the program, a window will appear asking you if you agree to the agreement in the window. Click Agree to use this software.

- 2 Click **Search for and Install Updates** and click the **Search for New Updates** button.



- 3 If there are available software or driver updates for your computer, the available updates will be listed. Select the required updates from the list and click on **Install Updates** to start the update.



Automatic update items display

By default, your computer is configured to automatically search for updates. If there is a new update available, this is displayed in the notification area. Click the balloon help icon in the notification area. Here you will be able to find the latest available updates.

Samsung Update Plus automatically searches, downloads and installs the latest versions of pre-installed Samsung software and drivers for your system. Please click here to configure and to start using Samsung Update Plus.



Updates that must be installed separately.

If you select **Install** for an update item that must be installed separately, a message appears informing you of this. Follow the instruction message to correctly install it.

AVStation premium (Optional)

AVStation premium is an integrated multimedia program that enables users to enjoy music, photographs, video, movies, etc. all with a single program.

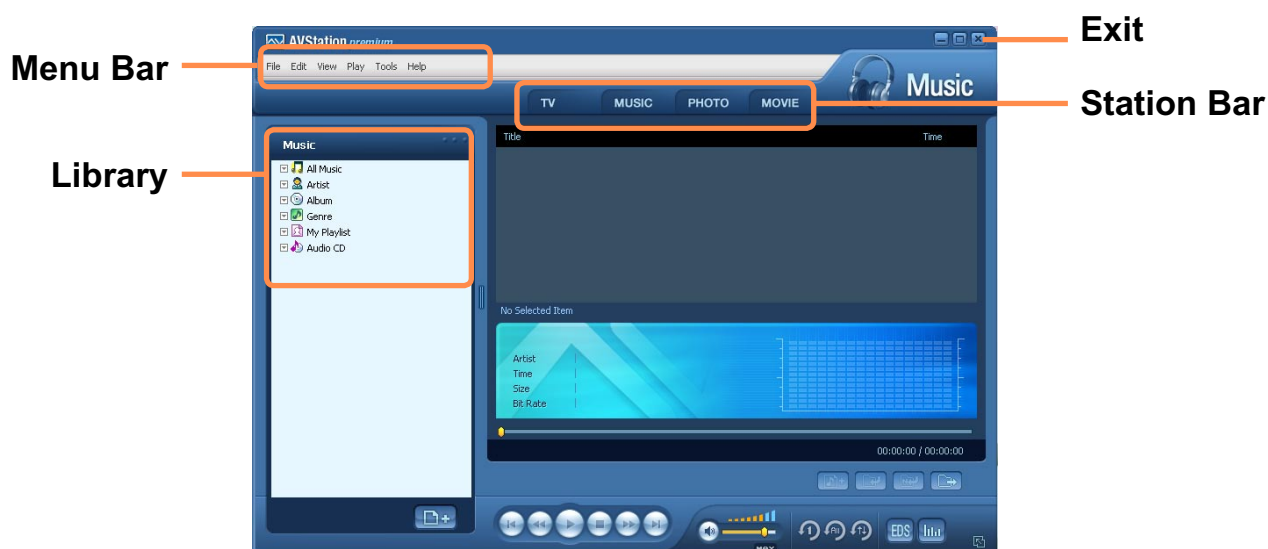


- The AVStation premium program is optional and may not be provided depending on the computer model.
- The screens used in this manual may differ from actual screens according to the program version.
- TV Station is only available for systems supporting a TV function. This computer is not supported.
- To play an audio CD or DVD, you have to connect an external ODD. Use the description below provided that an external ODD is connected.
- For detailed usage, refer to the program help.

Start and Screen Layout

To launch the program, select **Start > All Programs > Samsung > AVStation premium > AVStation premium**.

Alternatively double-click the **AVStation premium** icon () on the Desktop.



- MUSIC:** You can play a music file or an audio CD.
- PHOTO:** You can view or edit a photograph (image), and also view the photographs in a SlideShow.
- MOVIE:** You can play a video (movie) file.

MUSIC Station

Launch AVStation premium and click **MUSIC** on the Station Bar.

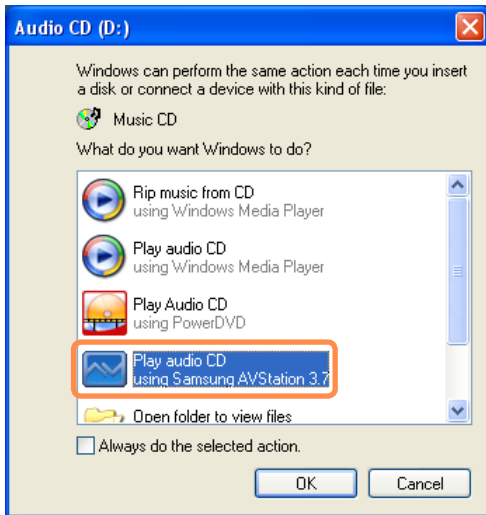


Playing an Audio CD

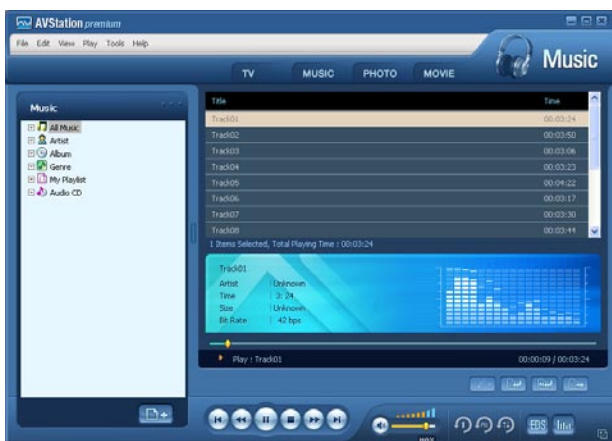
The procedures to play an audio CD are described below.

- 1 Launch AVStation premium and insert an audio CD into a CD drive connected to this computer.

- 2 In the **Audio CD** window, select **Play Audio CD using Samsung AVStation** and click the **OK** button.



- 3 The tracks on the audio CD are displayed in the Playlist and the first track is automatically played.



If an audio CD is already in the CD drive, double-click the **album title** in the **Audio CD** folder of the Library and add the tracks to the Playlist. The tracks added to the Playlist are played.

Playing a Music File

If a music file is registered to the MUSIC Library, you can easily play the music file. For the procedures to register tracks to the Library, refer to [p.129](#).

- 1 Move to **MUSIC Station** and double-click on **All Musics**.
- 2 Double-click a music file. The file is added to the playlist and played.



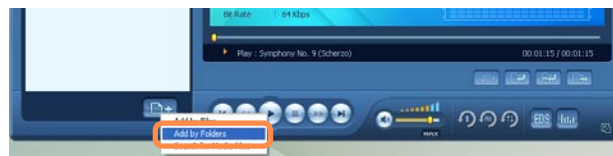


■ Playing a Track not registered to the Library

Click **File > Open**, select a music file to be played and click **Open**. The selected track is registered to the Library and played.

■ Creating My Playlist

My Playlist is a personal album used to collect, manage and play your favorite music files. For the procedures to create My Playlist, refer to the descriptions of MUSIC Station in Help.

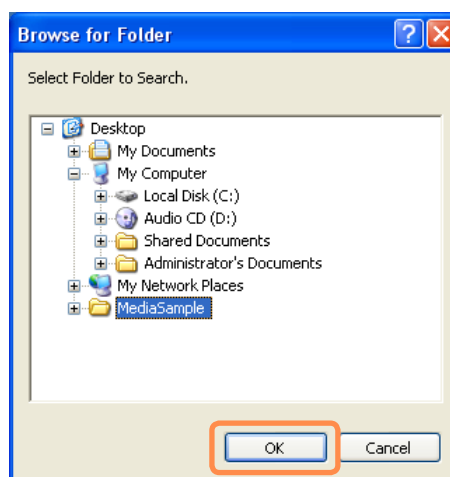


- 2 Select a folder which includes music files and click the **OK** button. The music files in the folder are added to the Library.

Adding Music Files to the Library

MUSIC Library is a library of music files used by MUSIC Station. The procedures to add music files saved on the computer to the Library are described below.

You can add files, folders or search and add files. As an example, the procedures to add a folder are described below.



The tracks used in AVStation are automatically added to the Library.


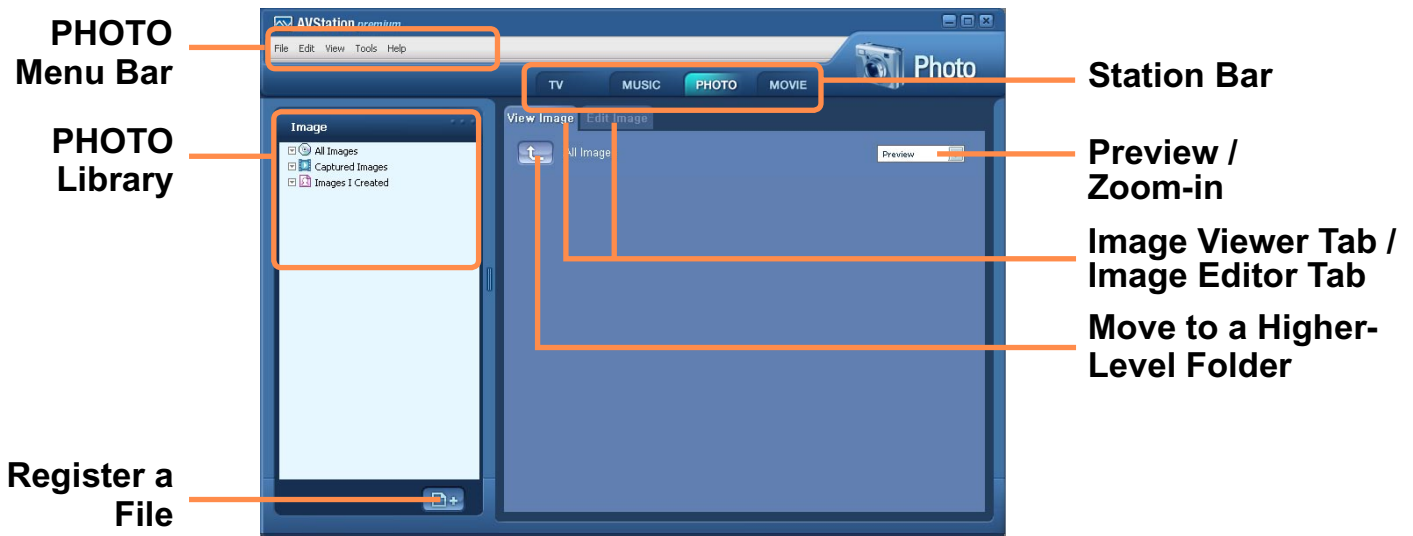
- 1 Click on the **Register a File** () button below the Library and click on **Add by Folders**.

PHOTO Station

Launch AVStation premium and click **PHOTO** on the Station Bar.



Viewing an Image

The procedures to view images registered to the PHOTO Library individually or via a SlideShow are described below.

For the procedures to register image files to the Library, refer to [p.133](#).

- 1 Move to **PHOTO Station** and double-click on **All Images**.

- 2 Click on a folder which includes images, and the images in the folder are displayed in the **Image Viewer window**.

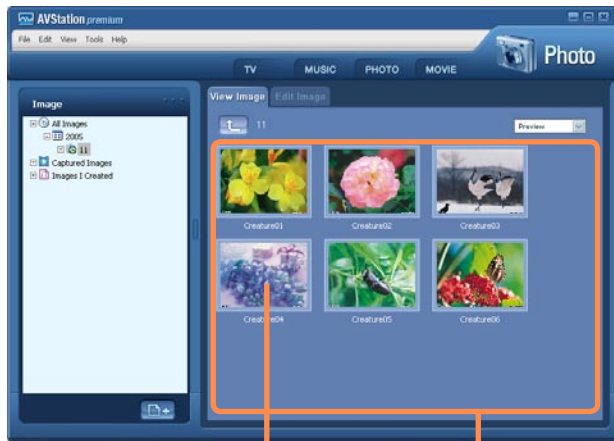


Image Image Viewer Window



- 3 Double-click on an image.
The selected image is zoomed in on.



■ Viewing an Image not registered to the Library

Click **File > Open**, select an image file to view and click **Open**. The selected image file is registered to the Library and displayed in the Image Viewer window.

■ Viewing an Image in Full Screen or through a SlideShow.


Click the **Full Screen** () button or **SlideShow** () button below the Image Viewer window.

To return to the Image Viewer window, double-click on the screen.

■ Watching a SlideShow while Listening to Music

To view a SlideShow while listening to music, play music from MUSIC Station and run SlideShow.

■ Setting an Image as the Background.

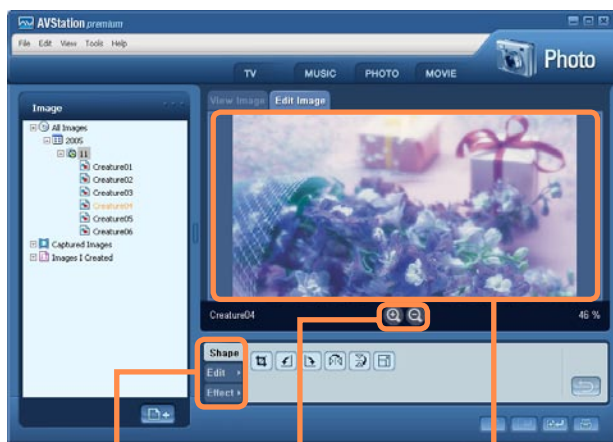
Click the **Set as Background** () button below the Image Viewer window. The selected image is set as the Desktop background.

Editing an Image

You can shape, edit, or apply special effects to an image. The image editor functions are described below.

- 1 Select an image to edit in the **Image Viewer window**, and select the **Image Editor** tab. The Image Editor screen appears.

The Image Editor screen consists of an **Image Workspace window** and 3 **Tool tabs**.



Tool
Tabs

Zoom In /
Zoom Out

Image
Workspace


- 2 Edit the image using the **Shape**, **Edit** and **Effect** tools.



Shape tool: Change the shape of an image through cut, resize.

Edit tool: Draw a line, add some clip art or enter letters.


Effect tool: Apply various effects to an image.

- 3 When finishing editing an image, click the **Save Edited Image** () button below the Image Editor window. The edited image is saved.

Adding Images to the Library

The PHOTO Library is a library storing image files to be used by PHOTO Station. The procedures to add image files saved on the computer to the Library are described below.

You can add files and add folders or search and add files. As an example, the procedures to add folders are described below.

- 1 Click the **Register a File** () button below the Library and click on **Add by Folders**.



- 2 Select a folder with image files and click the **OK** button.
The image files in the folder are added to the Library.



The image files used in AVStation are automatically added to the Library.

MOVIE Station

Launch AVStation premium and click on **MOVIE** on the Station Bar.



Playing a Movie File

The procedures to play a video file registered to the MOVIE Library are described below.

For the procedures to register files to the Library, refer to [p.135](#).

- 1 Move to **MOVIE Station** and double-click **All Movies**.

- 2 Double-click a video file. The file is played.





■ Playing a Video File not Registered to the Library


Click **File > Open File**, select a movie file to be played and click **Open**. The selected file is automatically registered to the Library and played.

■ Playing a Video File in Full Screen

1. Double-click on the current playback screen.
2. The video is played in full screen. In full screen, move the mouse pointer to the bottom of the screen to show the Play Control bar.

To play at the default screen size, double-click on the screen.

■ Capturing the Video Screen

Click on **Capture Current Screen** () below the Play window when the desired image appears on the screen and click the **OK** button.


Captured images are saved in the **C:\Program Files\Samsung\AVStation premium x.x\Data\Captured Images** folder.

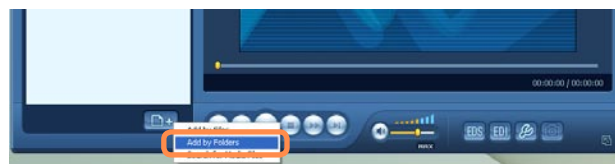
In addition, you can view captured images in the **PHOTO Station > Captured Images** folder.

Adding Videos to the Library

The MOVIE Library is a library storing video files to be used by MOVIE Station. The procedures to add video files saved on the computer to the Library are described below.

You can add files, add folders or search and add files. As an example, the procedures to add folders are described below.

- 1 Click the **Register a File** () button below the Library and click **Add by Folders**.



- 2 Select a folder which includes video files and click the **OK** button. The video files in the folder are added to the Library.



The video files used in AVStation are automatically added to the Library.

AVStation Viewer (Optional)

AVStation Viewer is a multimedia program that enables you to easily enjoy pictures, music and videos.



- The AVStation Viewer program is optional and may not be provided depending on the computer model.
- **AVStation Viewer Restrictions**
Using AVStation Viewer, you can only play files registered to the AVStation premium Library. (For the procedures to register files to the Library, refer to [p.129](#), [p.133](#) and [p.135](#).)
- The screenshots figures may differ from actual ones depending on the program version.

Start AVStation Viewer

Starting

Pressing the **Q** button when Windows is running launches **AVStation Viewer**.

Alternatively, click **Start > All Programs > Samsung > AVStation premium > AVStation Viewer**.

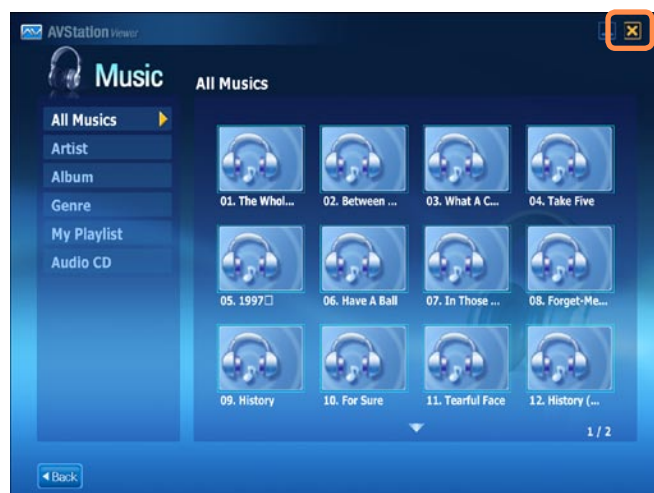


If **AVStation Viewer** does not run when you press the **Q** button on the left side of the computer, check if the **HOLD switch** on the left side has been selected.

If the **HOLD switch** is on, the computer is locked and the **Q** button will not work.

Exiting the program

Move the mouse pointer to the top of the screen and click the **Exit** () button.



Screen Layout



Music: You can play a music file or audio CD.


Photo: You can view a photograph or image file one by one or in a SlideShow.

Movie: You can play a video (movie) file.

Settings: You can configure the Music, Photo and Movie settings.



Move to the start screen while using the program

Click over the top left in the current screen. Then the  icon appears. When clicking this icon, you can move to the start screen.

Music Station

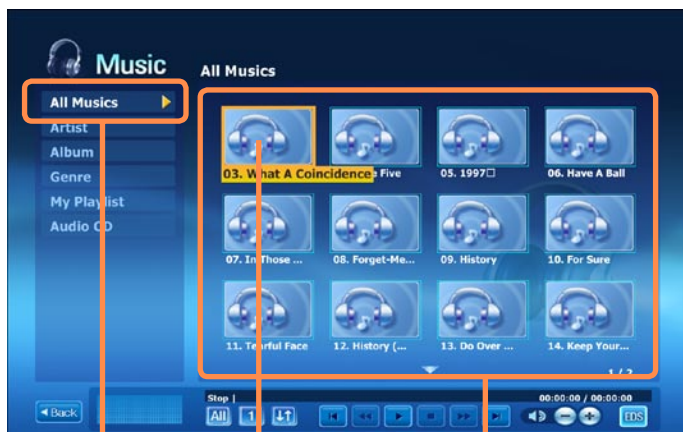
The procedures to play a music file or an audio CD are described below.

Playing a Music File

The procedures to play a music file registered to the Music Library are described below.

(For the procedures to register files, refer to ㊦ p.129.)

- 1 Launch AVStation Viewer and click on **Music**.
- 2 Click on **All Musics** and double-click a file in the right pane. The music file is played.



All Musics

Music File

Playlist Window

Playing an Audio CD

- 1 Launch AVStation Viewer and insert an audio CD into a CD drive connected to this computer.
- 2 In the AVStation Viewer start screen, click on **Music**.
- 3 Double-click the **Audio CD** in the left pane and double-click on an album or music file in the right pane. The selected music file is played.

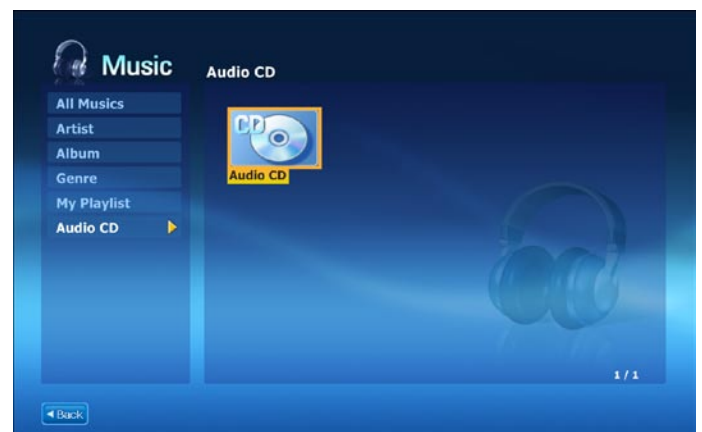


Photo Station

The procedures to view images registered to the Photo Library one by one and through a SlideShow are described below.

(For the procedures to register files, refer to ㉠ p.133.)

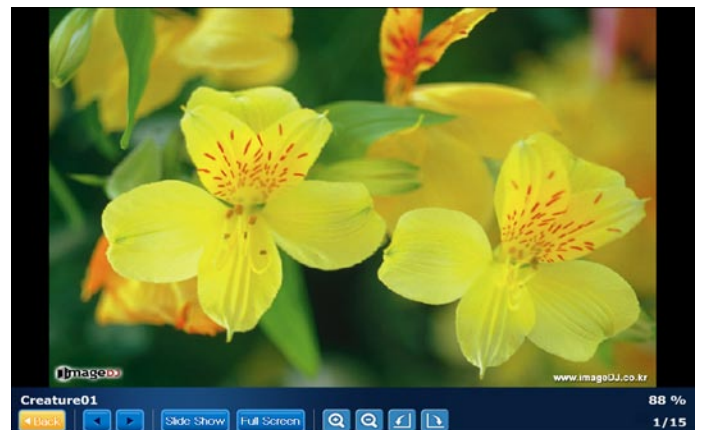
- 1 Launch AVStation Viewer and click on **Photo**.
- 2 Click on **All Images** and double-click on an image file in the right pane.



All Images

Image File

- 3 The selected image is zoomed in on.



To view an image in Full Screen or via a SlideShow.

Click on the **SlideShow** or **Full Screen** button below the zoomed in image.

To return to the previous status in the SlideShow or Full Screen, double-click on the screen.

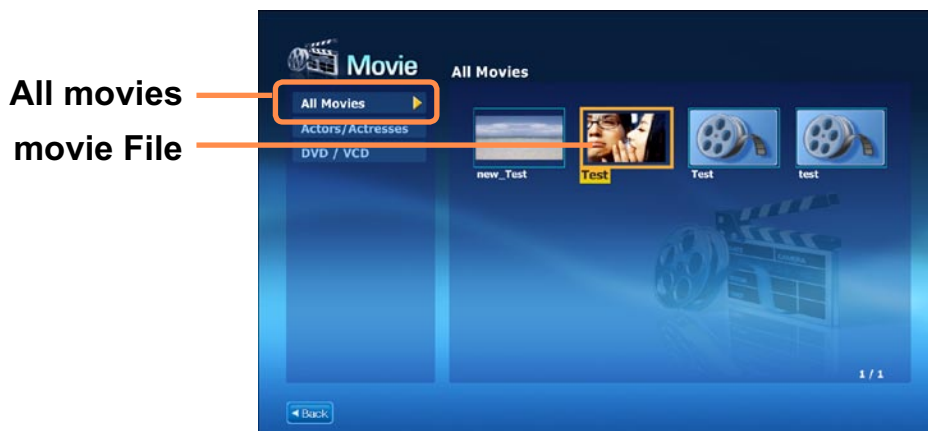
Movie Station

The procedures to play a video (movie) file are described below.

Playing a Movie File

The procedures to play a video file registered to the Movie Library are described below. (For the procedures to register files, refer to [p.135](#).)

- 1 Launch AVStation Viewer and click the **Movie**.
- 2 Click on **All Movies** and double-click a movie file in the right pane. The movie file is played.



Displaying the Play Control window

When clicking on the screen once, the Play Control window appears at the bottom.

Play Camera (Optional)

This computer provides an optional dual camera on the front and back so that users can take pictures or record video.

If your computer model is equipped with the dual camera, you can take pictures or record video using the Play Camera software.



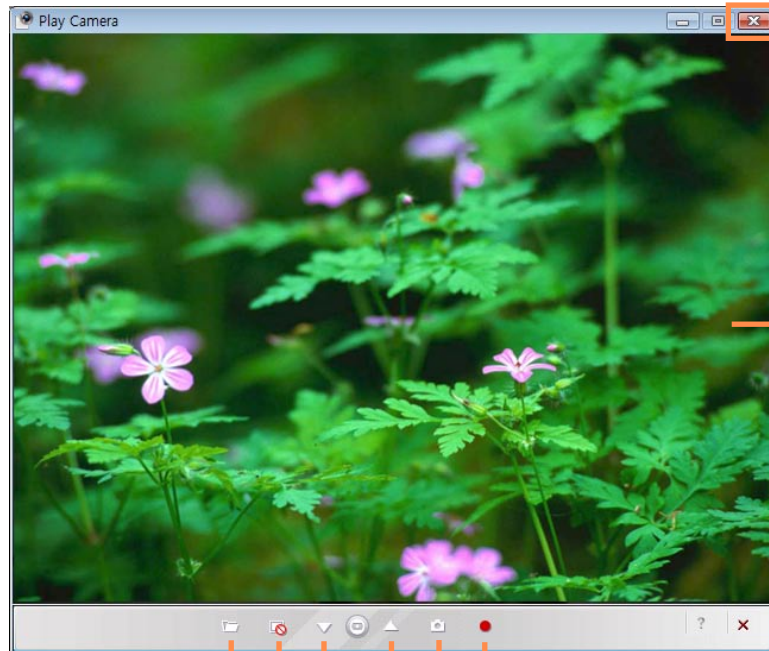
- This function is applied to some models only.
- The program version number in this manual is subject to change and the screen figures and terminologies may differ from the actual ones.
- For more detailed usage procedures, refer to the program Help.

Precautions when Taking a Picture

- Do not take a picture or record video of a person without that person's consent.
- Do not take a picture or record video where photographing is prohibited.
- Do not take a picture or record video where you may violate another person's privacy.

Photographing Procedures 1.

- 1 Select **Start > All Programs > Samsung > Play Camera > Play Camera**.



Close the Window

Preview Window

Open Folder: Opens the folder which includes photos or videos.

Preview Window: Shows or hides the Preview window.

Record: Records video.

Capture Screen (Still Picture): Takes a picture.

Rear Camera: Select to use the rear camera.

Front Camera: Select to use the front camera.


- 2 Press the **Front Camera** (▼) or **Rear Camera** (▲) button, focus on an object and press the **Capture Screen** (📷) button. To record video, press the **Record** (⬢) button.




To stop a video recording, press the **Stop** (⏏) button. Recording will stop.




- 3 Press the **Open Folder** (📁) button to view pictures or recorded videos.
 - You can view a photo by double-clicking it.
 - Since you cannot view recorded video files using the Play Camera, please use another video player (e.g. Windows Media Player, Cyberlink PowerDVD, etc.) to view video files.

Photographing Procedures 2.


- 1 When the computer is on, press the **SHUTTER**() button at the top.



- 2 When the Play Camera program is launched, press the **Shutter**() button again. A picture will be taken.

To switch the active camera to the rear or front camera, press the **Front Camera** () or **Rear Camera** () in the Play Camera screen and press the **Shutter**() button.

To record video, click the **Record** () button of the Play Camera program.

- 3 Press the **Open Folder** () button to view pictures and recorded videos.



- In the Preview window, right-click to configure the camera settings, the resolution and device settings, the save folder, etc.
- The Play Camera supports up to 1280 x 1024 pixels. Photographs are taken with the resolution selected but the photographs displayed on screen are only 640 x 480 pixels due to restrictions of the screen size.



- Video files recorded by the Play Camera are saved with a 320 x 240 pixels resolution.
- Since you cannot view recorded video files using the Play Camera, please use another video player (e.g. Windows Media Player, Cyberlink PowerDVD, etc.) to view video files.
- Switch front/rear camera by Play Camera program while you are video chatting through any other program. You can not preview images, take pictures, or record video with Play Camera when you are using other program.
You can not take pictures while you are video chatting.

OmniPass (Fingerprint Identification software, Optional)

(Fingerprint Identification, Integrated Password Authentication)

Using the OmniPass program, you can use the following functions.

Fingerprint Identification Function

You can register your fingerprint and use it instead of a password.

Integrated Password Authentication Function

You can use your Windows user account information using the Integrated Password Authentication Function.

If you register your Windows user account(s) information with the OmniPass program, you can login to Windows or onto websites using a single password.



- This function is applied to some models only.
- The program version described in this manual is subject to change and some functions may not be provided due to restrictions in the program.
- This model does not support the function which turns the computer on via a fingerprint.
- For more detailed information on the usage procedures, refer to the Help section in the OmniPass program(Fingerprint Identification, Integrated Password Authentication).

Signing Up

You have to register your fingerprint and Windows user account information as follows to use the fingerprint identification and integrated password authentication functions.



When using the fingerprint identification sensor

Keep your finger clean and dry when touching the sensor.
Place your finger over the fingerprint sensor and push gently down.

- 1 Select **Start > All Programs > Softex > OmniPass Control Center**.
Turn the computer on and click the **Start** button in the **Omnipass** window.

- 2 Click **Run Enrollment Wizard** to start the registration.



- 3 For the integrated password authentication step, complete the following.

Enter the Windows user ID and logon password and click the **Next** button.

If you do not enter a logon password, the integrated password authentication function will be permitted to anyone; it is therefore recommended entering a logon password.



Creating a user logon password.

- ❶ Select **Start > Control Panel > User Accounts > Create password for user account.**
- ❷ Enter a password in the New Password field, and re-enter the password in the Confirm New Password field. Click **Create Password**. A password has been created.

- 4 To register a fingerprint, click on **AuthenTec Fingerprint Device** and then click the **Next** button.

- 5 The fingerprint registration begins. Select the finger to be registered and click the **Next** button.

- 6 Register the fingerprint by placing your finger over the fingerprint identification sensor and placing it down slowly. Repeat this at least 3 times until the next screen appears automatically.

- 7 Place the registered finger over the fingerprint identification sensor again and click the **Next** button.

- 8 A window appears asking if you want to register an additional fingerprint. Click **No** to proceed to the next window. If you click **Yes**, Steps 4~7 are repeated.

- 9 Proceed with the settings and click the **Next** button.

- 10** When the user profile backup instruction window appears, read the contents and click on **Current Backup**. Specify a path to save the user profile to and save the name. When the backup file password window appears, enter a password and click the **OK** button.



What is a user profile backup?

This is a function for backing up the OmniPass information (fingerprint and user account information) registered on a computer so that the information can be used on another computer. For information on how to use a backed up user profile on another computer, refer to the Help section.

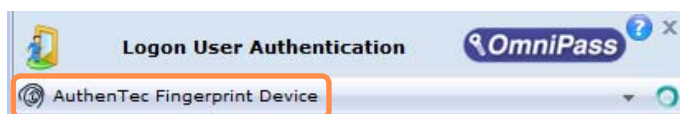
- 11** Click **Finish**. Registering information for using the fingerprint identification and integrated password authentication functions has been completed.

Logging onto Windows

- 1** If you turn the computer on after completing the user information registration step, the Logon Authentication window appears.

(To use the fingerprint identification function)

In the **Logon Authentication** window, select **AuthenTec Fingerprint Driver**, place your finger over the fingerprint identification sensor and place it down slowly.



If your fingerprint is not recognized, the fingerprint is displayed in red in the fingerprint display window. In this case, place your finger over the fingerprint identification sensor again and push it down slowly until the fingerprint is displayed in green.

(To use the integrated password authentication function)

In the **Logon Authentication** window, select **Integrated Password Authentication**. Enter the username and the login password and click the **OK** button.



User Name:

Domain:

Password:

Identity:

OK

User Name: User account name

Password : User account password

Domain, ID: These fields are automatically entered.

- 2 When the fingerprint identification or password authentication is complete, you can logon to Windows.

Encrypting/Decrypting Files

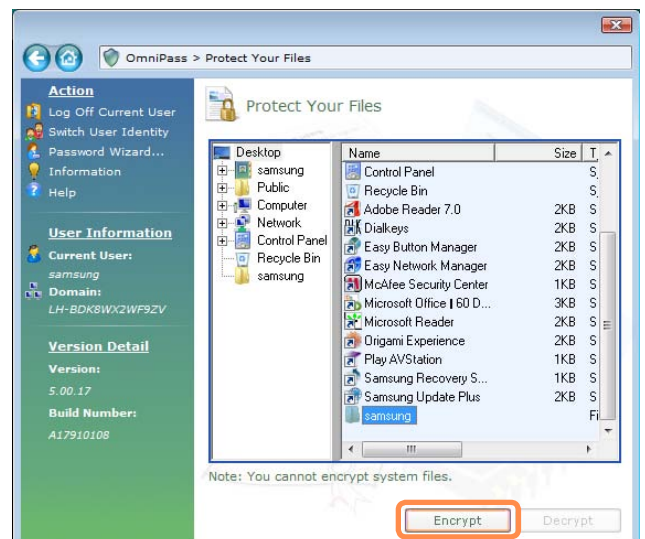
You can encrypt folders and files so that only specified users can open or modify them.

The procedures to encrypt files are described below.



This function is applied to some models only.

- 1 Select **Start > All Programs > Softex > OmniPass Control Center > File Protection**.
- 2 Select a folder or file to be encrypted and click **Encrypt**.



To decrypt encrypted folders and files

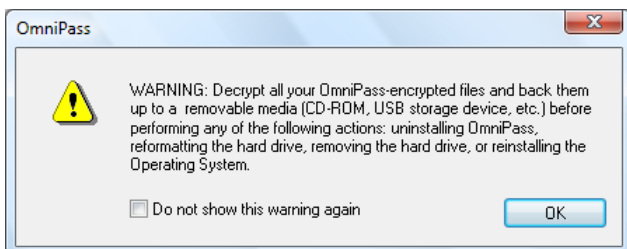
The procedures are the same as those for the encryption process except for selecting **Decrypt** instead of **Encrypt** in the figure above.

- 3 When the file encryption authentication window appears, select **AuthenTec Fingerprint Driver**, place your finger over the fingerprint identification sensor and push it down slowly. Alternatively, select Integrated Password Authentication and enter the login password.



If your fingerprint is not recognized, the fingerprint is displayed in red in the fingerprint display window. In this case, place your finger over the fingerprint identification sensor again and push it down slowly until the fingerprint is displayed in green.

- 4 If the fingerprint is recognized, the following window appears. Click OK to **encrypt** the file.



Right-click over a folder or file to be encrypted and select **OmniPass Encrypt File(s)** from the pop-up menu. The selected folder or file will be encrypted.

Logging into Internet Sites

You can easily login to frequently used Internet sites using the fingerprint identification or password authentication functions instead of entering your user ID and password.

As an example, the procedures for logging into the Hotmail site are described below.

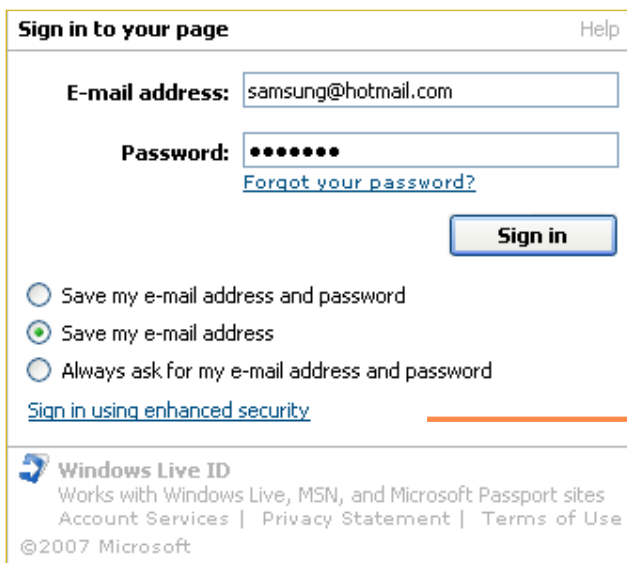
The following describes the procedures for registering your user ID and password. Once the user ID and password of a site are registered, you can login to the site automatically.



- This function is applied to some models only.
- This function may not be supported for some Internet sites.

- 1 Launch Internet Explorer (🌐) and open the Hotmail site. (<http://www.hotmail.com>)
Enter your user ID and password.
- 2 Right-click over the (🔑) icon in the Taskbar and click on **Save Password**.

- 3 When the mouse pointer changes to a yellow key icon (🔑), click the login window, but not the Sign in button. If you wait a moment, the mail address and password information are retrieved.



- 2 Select **AuthenTec Fingerprint Device**, place your finger over the fingerprint identification sensor and push it down slowly once. Alternatively, select Integrated Password Authentication and enter the login password.

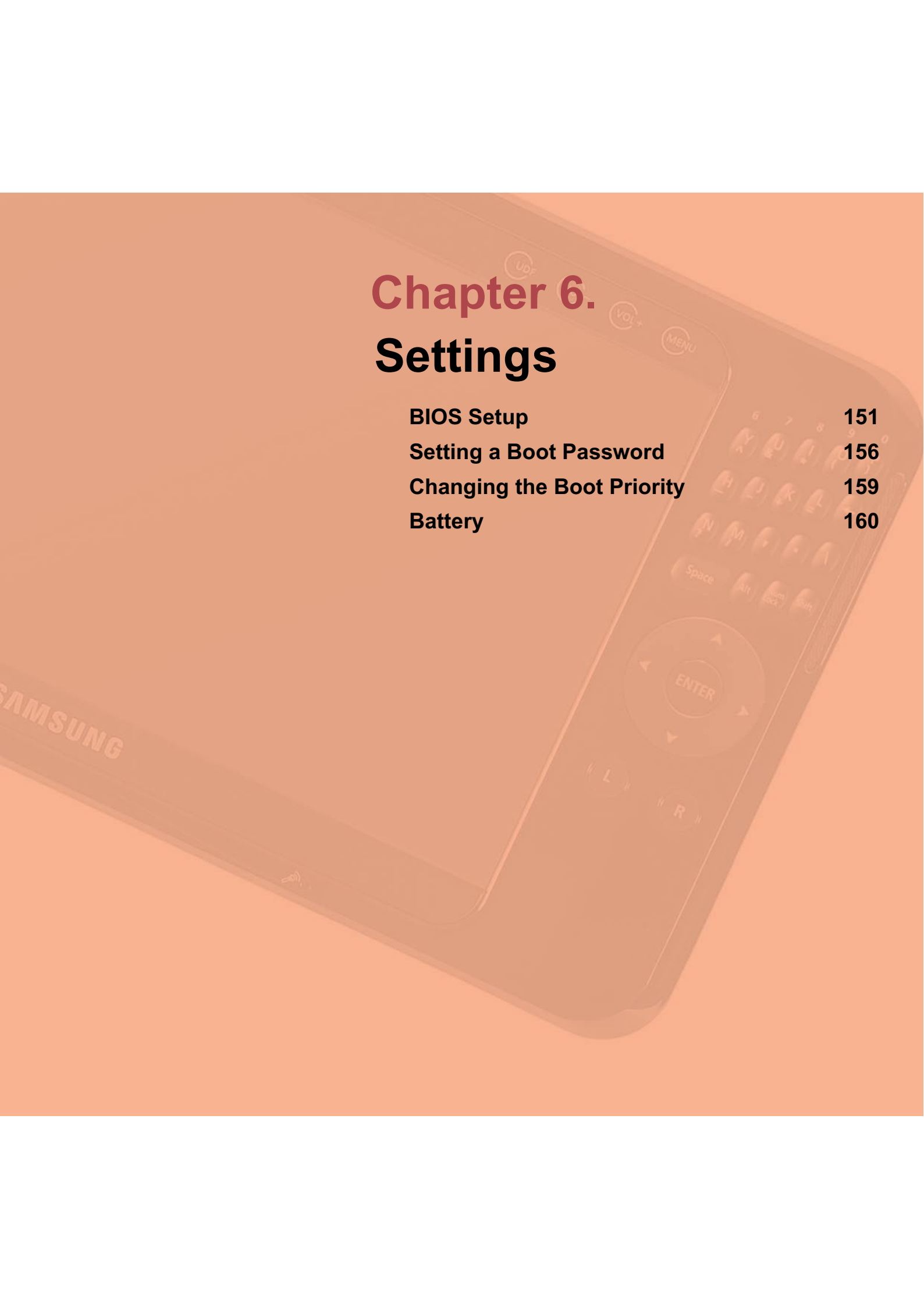
- 3 If the fingerprint identification or password authentication is complete, your ID and password are automatically entered and you are logged into the website.

Login Window

- 4 Enter an easy to remember name and click **Finish**.

- 5 Thereafter you can login to your registered websites using your fingerprint or password.

- 1 When opening a registered site, the **Access Authentication** window appears.



Chapter 6.

Settings

BIOS Setup	151
Setting a Boot Password	156
Changing the Boot Priority	159
Battery	160

BIOS Setup

The BIOS Setup enables you to configure your computer hardware according to your needs.



- Use the BIOS setup to define a boot password, change the booting priority, or add a new device.

Since incorrect settings may cause your system to malfunction or crash, take care when configuring the BIOS.

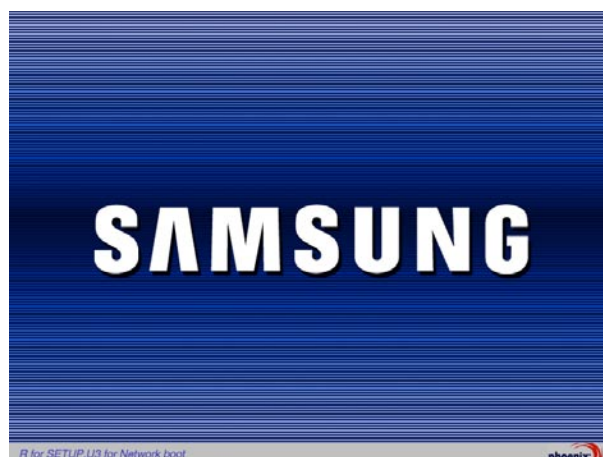
- The functions of the BIOS setup are subject to change for product function enhancement purposes.



The contents of the BIOS Setup may differ depending on the computer model and the figures in the manual may differ from the actual object.

Entering the BIOS Setup

- 1 Slide the **Power Switch** down. The computer is turned on.
- 2 The booting screen (SAMSUNG logo) appears. Press the **R button** (Ⓡ) on the right side of the computer. When an external keyboard is connected, press the **F2** key.



- 3 After a moment, the BIOS setup screen appears.
The items in the BIOS setup may differ depending on the product.

Setup Menu

PhoenixBIOS Setup Utility

MainAdvancedSecurityBootExit

System Time[10:21:53]

System Date[03/01/200x]

Hard Disk Drivexxxxxx

CPU TypeIntel (R) xxxx M

CPU Speedx.xx GHz

Total Memoryxxx MB

Graphics Memory[Auto : Shared]

BIOS Versionxxxxxxxx

MICOM Versionxxxxxxxx

Item Specific Help

<Tab>, <Shift-Tab>, or<Enter> selects field.

F1 Help

↑↓ Select Item

▼ (F5)/▲ (F6) Change Values

F9 Setup Defaults

◀ (Esc) Exit

↔ Select Menu

Enter SelectSubMenu

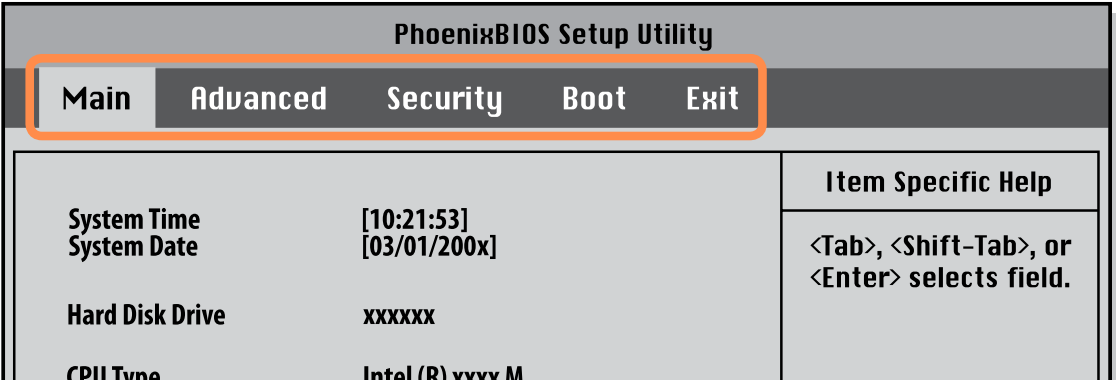
F10 Save and Exit

Help
Help for the selected item appears automatically.

Setup Items

152

The BIOS Setup Screen



Menu	Description
Main	Used to change the basic system and environment settings.
Advanced	Used to configure advanced functions on your computer around devices and chipsets.
Security	Used to configure security functions, including passwords.
Boot	Used to set the boot priority and other boot options
Exit	Used to exit the Setup either saving the changes or not.

System Setup Buttons (Keys)

The following Buttons(keys) are used in System Setup.



When an external keyboard is connected, you can use the key enclosed in parentheses. For example, press the **F1** key on the external keyboard instead of the **L** button.

Setup Key	Button	Function
L Button (F1 Key)		If you press the L button, Help appears. If you press it again, Help disappears.
Mouse/ Joystick Up & Down (↑ ↓ Keys)		If you push the Mouse/Joystick up or down, you can move up or down the item list.
Mouse/ Joystick Left & Right (← → Keys)		If you push the Mouse/Joystick left or right, you can move to another menu.
▼ (F5 Key) / ▲ (F6 Key)		Press the ▼ (F5) / ▲ (F6) buttons to change the value of an item.
◀ (Esc Key)		Press the ◀ button to return to a higher-level menu or to move to the Exit menu.

**Enter Button
(Enter Key)**



Selects an item or opens a submenu.

(F9 Key)

To initialize the setup settings, press the **F9** key on the external keyboard.

If an external keyboard is not connected, select **Exit > Load Setup Default** from the setup menu.

(F10 Key)

To save the changes press the **F10** key on the external keyboard.

If an external keyboard is not connected, select **Exit > Exit Saving Changes** from the setup menu.



Exiting the System Setup

1. Move to **Exit Menu > Exit Saving Changes** by using the **Mouse/Joystick** and press the **Enter** button.
2. Select **Yes** and press the **Enter** button. The System Setup is closed and Windows is started.

Setting a Boot Password

When setting a password, you have to enter a password to use the computer or enter the BIOS Setup.

By configuring a password, you can restrict system access to authorized users only and protect data and files saved on the computer.



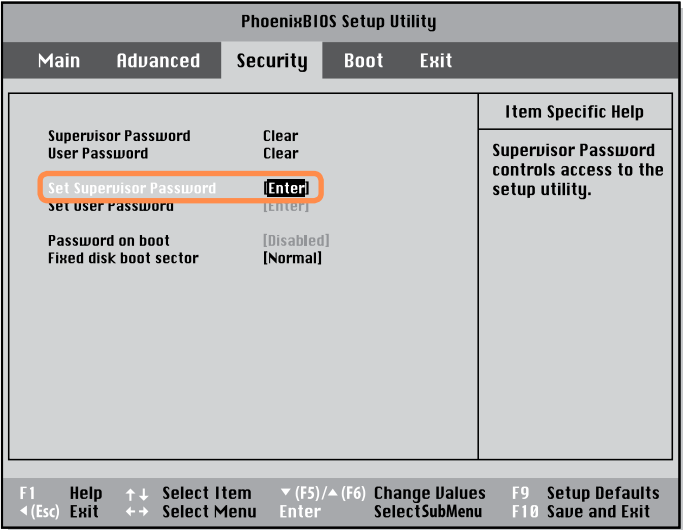
Do not lose or forget your password.
If you have forgotten your password, contact a Samsung service center. In this case, a service fee will be charged.
For the setup buttons, refer to the description of 'System Setup Buttons (Keys)'.
p154

Setting a Supervisor Password

A Supervisor Password is required to turn the computer on or to start the System Setup.

When setting a Supervisor Password, users other than a supervisor cannot use the computer.

2 In the **Set Supervisor Password** item, press <Enter>.



1 Select the **Security** menu in the BIOS Setup.

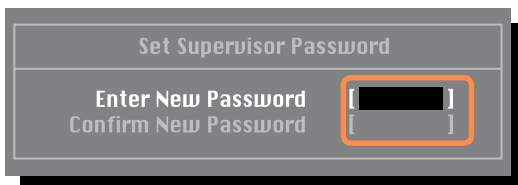
- 3** Enter the password with the keypad and press the **Enter** button. Reenter the password and press the **Enter** button.

You can use up to 7 alphanumeric characters for a password but you cannot use special characters.

The ← key on the keypad performs the role of Delete and the ◀ button performs the role of the Cancel (Esc) function.



To enter a number, press Num Lock and then enter the number. If you do not press Num Lock, the characters of the corresponding keys are entered instead of digits.



- 4** When a message confirming the password configuration appears in the [Setup Notice] window, press <Enter>.

The supervisor password has been set. The supervisor password is required to turn the computer on or to enter System Setup.

Setting a User Password

Users can start the system with a user password, but cannot enter the System Setup. By doing this, you can prevent other users from entering Setup.

Before configuring a user password, a supervisor password must have been configured. Deactivating the supervisor password also deactivates the user password.

In the **Set User Password** item, press <Enter> and complete the procedures of Step 3 of Setting a Supervisor Password.

Activating the Booting Password

Before activating the booting password, a supervisor password must have been configured.

Set the **Password on boot** option to **Enabled**. From now on, system booting will not proceed without the password.

Deactivating the Password

- 1 On the password to be deactivated, press **<Enter>**. For example, to deactivate a supervisor password in the **Set Supervisor Password** item, press **<Enter>**.
- 2 In the **Enter Current Password** item, enter the current password and press **<Enter>**.
- 3 Leave the **Enter New Password** item field empty, and press **<Enter>**.
- 4 Leave the **Confirm New Password** field empty, and press **<Enter>**.
- 5 In the [**Setup Notice**] window, press **<Enter>**.
The password is deactivated.

Changing the Boot Priority

The default boot priority of your computer is the CD-ROM first, then a removable device and then the hard disk drive in this order.

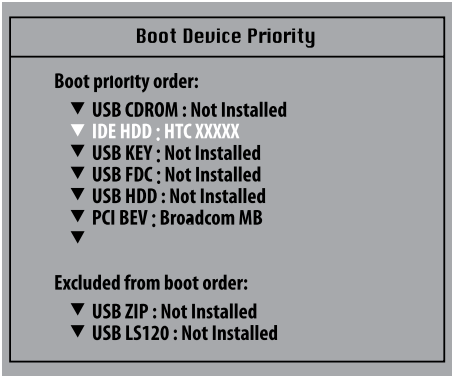
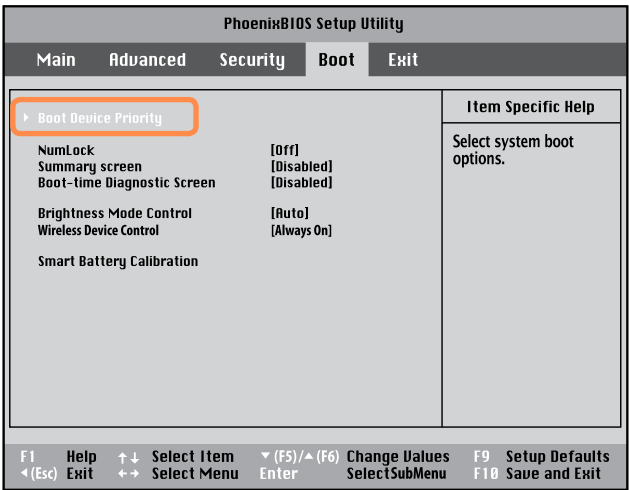
You can change the booting priority using the Boot menu of the System Setup. As an example, the procedures to change the highest boot priority device to the hard disk drive are described below.

1 Select the **Boot** menu in the BIOS Setup.

2 Press <Enter> on the **Boot Device Priority** item.

3 Push the **Mouse/Joystick** down to move the booting device upwards.

Alternatively, you can move the booting device by using the ▲ or ▼ buttons.



4 Press the ◀ button to exit the **Boot** menu. Move to **Exit > Exit Saving Changes** by using the **Mouse/Joystick** and press the **Enter** button. The changes are saved and Setup is closed.

Battery

Please refer to the following instructions when running the computer on battery power without connecting the AC power.

A Lithium-Ion smart battery is supplied with this computer.



Carefully read and follow the precautions printed on the battery before using the battery.



Precautions

Use only chargers specified in the User Guide.

Never heat the battery pack, put it near or in a fire or use at a temperature higher than 60°C, as this may cause fire.

Never cause a short circuit between the battery pack terminals or disassemble the battery pack.

Carefully read and follow the precautions printed on the battery and the safety instructions in the User Guide before using the battery.

Please refer to the system operation environment (☞ p.205) of this guide. Operate and store the battery at room temperature.

Installing/Removing the Battery

- 1 Shutdown the system and place the computer upside down on a flat surface.
- 2 Lift the Stand up and push the Battery Latch down into the **Release** (🔓) position.

Lift the battery up and separate it.



3 To reinstall the battery, align the battery to the outside of the computer and insert the battery.

Lift the battery latch up to the **Lock** (A) position and put the Stand down.



When you are unable to insert the battery, check if the battery latch is in the **Release** (B) position. If it is in the **Lock** (A) position, you cannot insert the battey.

Charging the Battery

1 Attach the battery and connect the AC adapter to the DC-in jack of the computer.

The battery will then start charging.

2 When charging is complete, the Charge LED turns green.

Status	Charge LED
Charging	Amber
Charging complete	Green
AC adapter not connected	Off

Measuring the Remaining Battery Charge

You can view the battery charge status by completing the following procedures.

Viewing through the MENU button

Press the **MENU** button and press on **Battery**.

To view on the battery

Press the button on the outside of the battery to check the remaining battery charge.



Battery Usage Time Information

A battery is an expendable supply, so when using it over a long time, the capacity/battery life is shortened. If the battery life is reduced to under half of its initial time, we recommend purchasing a new battery.

For long periods of not using the battery, keep the battery after discharging it. This extends the battery life time.




Battery Warning

- You will hear an alarm when the remaining battery charge reaches below 10%.
In this case, connect the AC adapter or turn off the computer and install a fully charged battery.
- If the battery residual amount is 3~5%, the computer automatically shuts down after saving the data. The battery residual amount may vary depending on the computer model.

Extending the Battery Usage Time

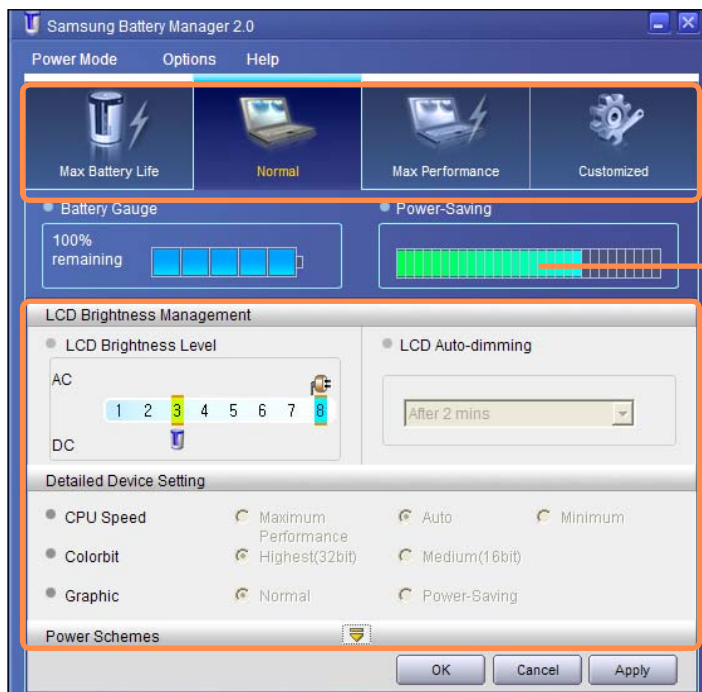
Decreasing the LCD Brightness

For the models with Touch Sensor buttons, press the **MENU** button and click  from the **Brightness** item to decrease the LCD brightness. Then you can extend the battery usage time.

For models without a Touch Sensor button, you can extend the battery use time by pressing the **User Defined button** (▼) while holding down the **INTERNET** button below the **Mouse/ Joystick** buttons. The LCD brightness is decreased and you can extend the battery usage time.

Using Samsung Battery Manager

Samsung Battery Manager is a power management program that enables using the battery power efficiently. You can select an optimized power mode according to your requirements. Click **Start > All Programs > Samsung > Samsung Battery Manager > Samsung Battery Manager**.



Change Power Mode

Power Saving Effects

You can only change the detailed configuration in Custom Mode.

Maximum Battery Saving Mode

This mode is appropriate for conditions which require the maximum battery usage time. This may degrade the performance of the system.

Normal Mode

This mode is appropriate for normal conditions. Both system performance and battery usage time are optimized.

Maximum Performance Mode

This mode is appropriate for conditions that require maximum system performance. Therefore, the battery usage time may be reduced in this mode.

Custom Mode

In this mode, you can configure the unit to save battery usage. You can adjust the LCD brightness, the system standby time, the screen color quality, and the graphics mode values.



Power Saving Effect

This shows the relative battery usage time for each power mode. The more effective the power saving, the longer the graph will appear.



When Running a Game or Multimedia Application

A game or multimedia application may not work smoothly in Maximum Battery Saving Mode. Using this is recommended when the AC adapter is connected or in Normal or higher modes.

Samsung Battery Manager Power Modes

- Since the Maximum Battery Saving Mode of the Samsung Battery Manager controls the system operating speed to extend the battery usage time, the performance of the system may be degraded.
- When changing the power settings in Custom Mode in the Samsung Battery Manager, the settings of the Power Options Properties window are changed accordingly.
- To use Normal Mode in Samsung Battery Manager after reinstalling Windows XP, you have to install the Samsung Battery Manager using the system software media.

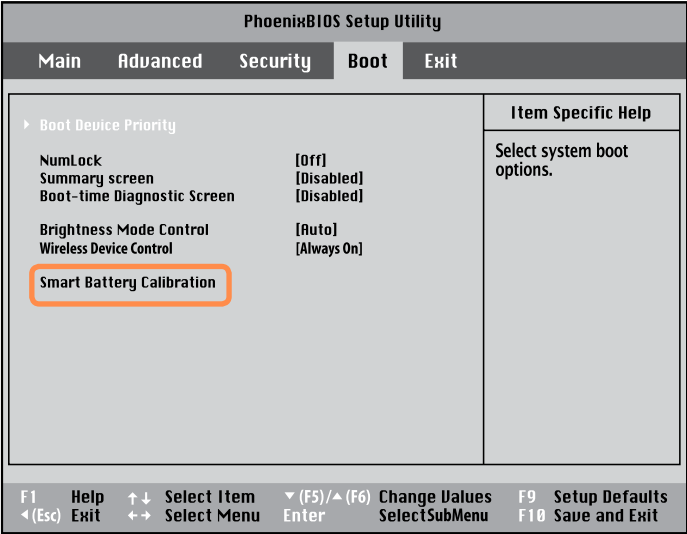
Using the Battery Calibration Function

When charging/discharging the battery repeatedly for a short time only, the battery usage time may be reduced by the difference between the actual battery charge and the remaining charge display.

In this case, the actual battery charge and the remaining charge display will be the same by discharging the battery completely using the Battery Calibration function, and then recharging it again.

- 1
- Disconnect the AC power adapter after turning off the computer.
- 2
- Turn the computer on again. When the SAMSUNG logo appears, press the **R** button to enter Setup.

- 3
- Using the arrow keys, select **Smart Battery Calibration** in the **Boot** menu and press **Enter**.



- 4
- Highlight **Yes** in the Battery Calibration Confirmation window and press **<Enter>**.
The Battery Calibration function is activated and the battery is forcefully discharged. To stop the operation, press the **◀ (Esc)** button.
This operation requires 3~5 hours depending on the battery capacity and the remaining battery charge.



Chapter 7.

Appendix

Using Samsung Magic Doctor (Optional)	167
Using McAfee SecurityCenter (Optional)	168
Reinstalling Software	170
Reinstalling Windows XP	172
Samsung Recovery Solution (Optional)	177
Q & A	187
Product Specifications	205
Glossary	215
Index	218
Contact SAMSUNG WORLD WIDE	219

Using Samsung Magic Doctor (Optional)

Magic Doctor is troubleshooting software provided by Samsung Computer. A user can diagnose system problems via one-click or by selecting diagnostic items.



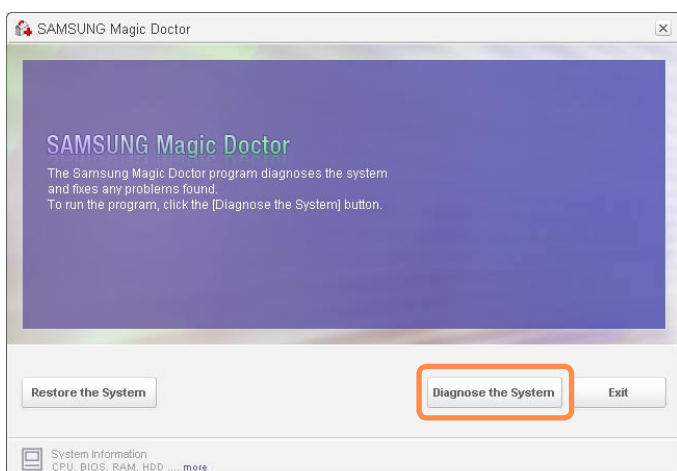
The screens used in this manual may differ from actual screens according to the program version.

Diagnosing the System

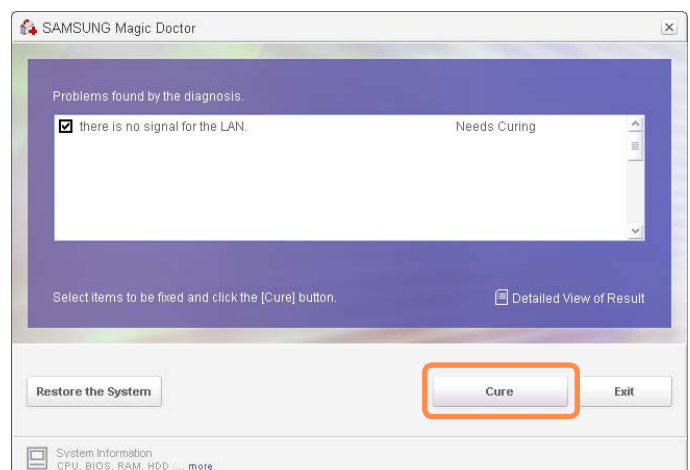
Diagnosing the System is a function to check system connections and diagnose problems affecting to system operation and solve it.

1 Click **Start > All Programs > Samsung > Samsung Magic Doctor > Samsung Magic Doctor**.

2 Click on **Diagnose the System** to start diagnosing the system.



3 When the system diagnosis is completed, the diagnostic result appears.



If problems are found, click the **Cure** button to correct the problem. Samsung Magic Doctor starts the corrective operations.

Using McAfee SecurityCenter (Optional)

With the wide variety of viruses, hackers and blended threats lurking on the Internet today, you need more than a simple anti-virus program to keep your PC and files secure. McAfee Web Essentials (including AntiVirus, Firewall & AntiSpyware) is the program which provides the essential protection you need to surf the Web and download files safely.




We recommend installing McAfee Web Essentials before connecting Internet.

Installing McAfee Web Essentials

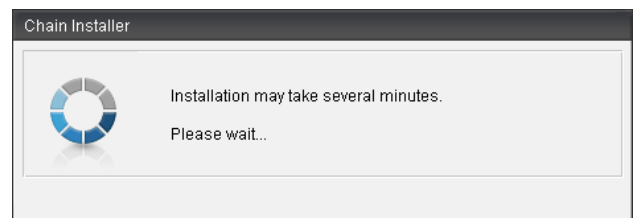
For some models, the McAfee program is already installed.

If the McAfee Security Center icon exists on the Taskbar or as a shortcut icon on the Desktop, installation is not required.



- 1 Click **Install McAfee Web Essentials** icon () on the Desktop.

- 2 Wait for 3~5 minutes until 'Chain Installer' windows is closed.



- 3 After 'Chain Installer' window is closed, McAfee Web Essentials will protect your PC.

Using McAfee SecurityCenter

To keep things extra simple, the new McAfee SecurityCenter gives you at-a-glance control over all your McAfee applications. Get the confidence you need to surf the Web, knowing McAfee is always on, always updating and always protecting you.

After installation done of McAfee Web Essentials, McAfee Registration wizard will lead you to complete registration process for always updating and always upgrading.




How to scan and cure Viruses

- 1 Click **Start > All Programs > McAfee > McAfee SecurityCenter**.
- 2 Click **Scan** from the left pane of the program.

- 3 If a virus is found, remove the virus according to the instructions on the screen.



To protect yourself against the latest viruses, update McAfee SecurityCenter regularly. Connect to the Internet and click the **Update icon** ( Update) to update.

Reinstalling Software

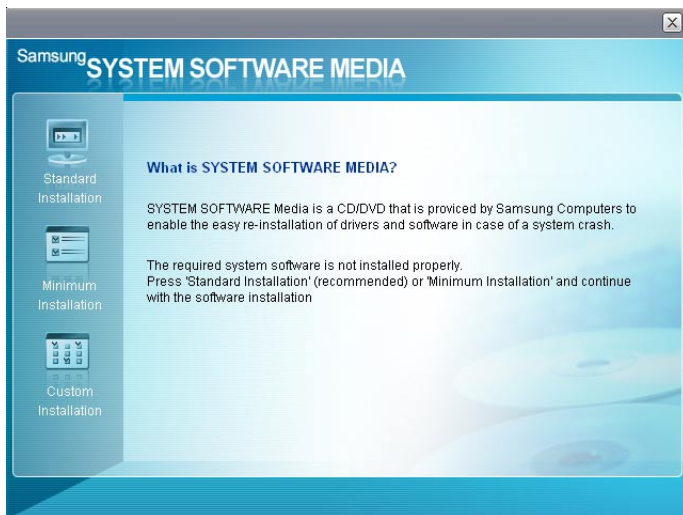
You can reinstall software using the System Software Media, when a device driver or computer application is not working properly.



- When software is not working properly, it is recommended removing the software using the Add or Remove Programs of the Control Panel and reinstalling the software using the System Software Media.
- The System Software Media in the text is supplied as a CD or DVD depending on your computer model.
- To use the system software media, **the external USB ODD must be connected** to the computer. The following descriptions presuppose that the external USB ODD is connected.

Running the System Software Media

Insert the **System Software Media** into the external USB ODD. The initial screen appears automatically.



► Standard Installation

If you select this option, programs not currently installed on the computer are listed.

You can conveniently use this option, when installing all the programs on the media after reinstalling Windows.

► Minimum Installation

If you select this option, programs are listed that need to be installed on the computer (drivers, Windows updates, etc.).

You can conveniently use this option, when you need to install essential programs only.

► Custom Installation

If you select this option, you can select the programs to be installed.

You can conveniently use this option, when you need to install an individual driver or program that is causing a problem.

2 If the **Start Standard Installation** window appears, click the **OK** button. The drivers and programs, which were installed in the computer when you purchased the computer, are installed again.

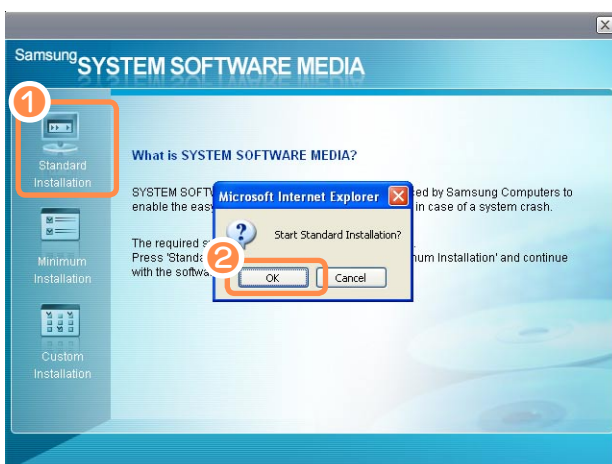
3 When done, restart the system.

Installing Software



As an example, the installation procedures for the **Standard Installation** options are described below.

1 Select **Standard Installation** in the **System Software Media** main screen.



Reinstalling Windows XP

You can reinstall Windows using the System Recovery Media when Windows does not work properly.



- **System Recovery Media** is optional and may not be provided depending on your computer model. These descriptions are only for models supplied with the **System Recovery Media**.
- There are two Windows installation modes: Standard Installation, which allows users to change options, and Quick Installation, which allows users to install Windows easily.
- To install Windows, an **external-type ODD** and a **USB keyboard** are required. Connect the external-type ODD and USB keyboard before turning the computer on. If you connect a USB keyboard during the installation, the computer will fail to recognize the USB keyboard.
- To reinstall Windows when Windows does not boot, refer to [p.176](#).



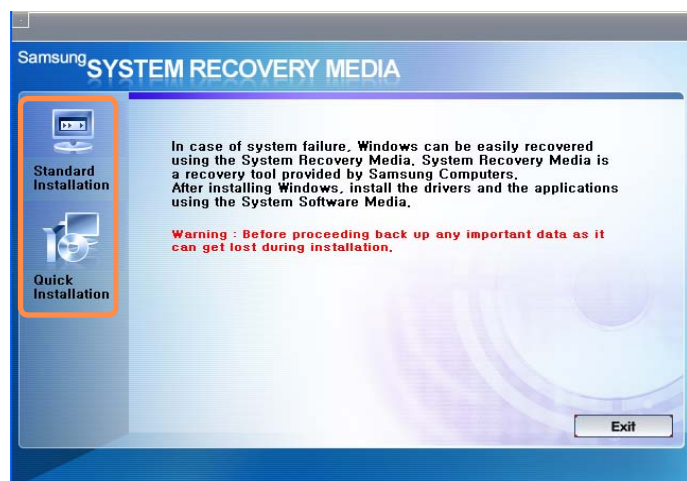
Reinstalling Windows may delete data (files and programs) saved on the hard disk drive. Make sure to backup all important data. Samsung Electronics shall not be held liable for any loss of data.

Running the System Recovery Media



- **Preparation**
 1. Connect an external-type ODD through the **USB Port** of the computer.
 2. Connect the **external-type USB keyboard**.
 3. Turn the computer on to boot up Windows.

Insert the **System Recovery Media** into the external USB ODD. The start screen will appear automatically.



► Standard Installation

You can change the settings for **Regional and Language Options, Date and Time, Computer Name, User Accounts, etc.** during the Windows installation.

However, after reinstalling Windows, you have to manually reinstall device drivers and programs using the system software media.

► Quick Installation

This reinstalls Windows with the user data and the system settings intact by overwriting the Windows folder.

Since the user data and the system settings in the already existing

Windows folders are preserved, you do not have to reinstall device drivers and programs.

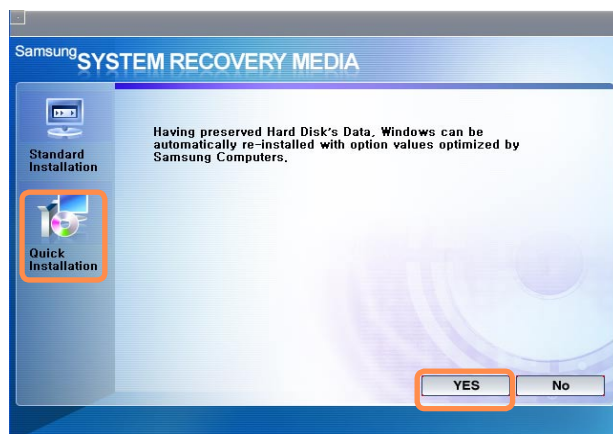
Quick Installation

The Windows Quick Installation procedures are described below.



You can install using the Stylus Pen.

- 1 In the **System Recovery Media** start screen, click **Quick Installation**.



- 2 The description for the Quick Installation appears. Click **Yes** to start Windows installation. When the installation is complete, the Windows Desktop appears. Remove the **System Recovery Media** from the ODD.

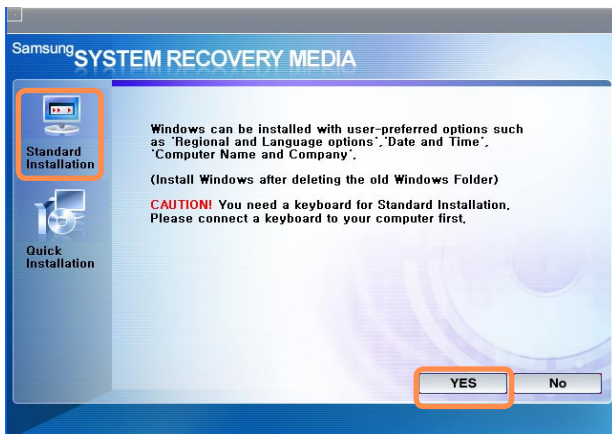
Standard Installation

The Windows Standard Installation procedures are described below.



For the Standard Installation, a USB keyboard is necessary. You have to connect the USB keyboard before turning the computer on. The descriptions assume that you are using an external USB ODD and USB keyboard.

- 1 In the **System Recovery Media** start screen, click **Standard Installation**.



- 2 The description for the Standard Installation appears.

Click **Yes** to start the Windows installation. The system restarts and the Windows installation begins.



If you have set a booting password, enter the booting password when booting the system to continue the installation.

- 3 After the system has restarted, the message '**Press any key to boot from DVD**' appears. Do not press any key at this time.

After a moment the partition configuration screen appears.

To leave the partition unchanged, move to the C:Partition 2 using the direction key (↓) and press <**Enter**>.



Partition setting is a function that divides the hard disk drive into one or several partitions. Note that changing the partition deletes all data on the hard disk drive.

- 4** Select the folder to install the Windows operating system. To delete the previous version of Windows and install in the current folder, press <L> on the keyboard.



When pressing the <ESC> key to select another folder for the installation, a new Windows folder is created causing the risk of dual booting.

- 5** After the installation process copies the necessary folders for the Windows installation, restart the system, and the message “**Press any key to boot from DVD**” is displayed. You do not need to enter anything. The Windows XP installation screen will appear shortly to proceed with the installation.

- 6** When the **Regional and Language Options** window appears, click **Next**.

- 7** When a window that requires your name and organization pops up, enter your name and the organization and click **Next**.



A window that requires the computer name and the administrator password appears. Enter the computer name and the administrator password and click **Next**.

- 8** When the **Date and Time Settings** window appears, click **Next**. Setup continues and the system restarts.

- 9** When the system restarts, the message “**Press any key to boot from DVD**” is displayed. You do not need to enter anything. In a moment, the Windows XP Desktop appears. When you see the Windows desktop, this means that the installation process is completed.

- 10** Remove the **System Recovery Media** and install the device drivers and applications from the **System Software Media**. p.170

Reinstalling when Windows does not start

When Windows does not start, boot up with the **System Recovery Media** and from there you can reinstall Windows.




Connect the **external-type ODD** and **USB keyboard** before turning the computer on. If you connect a USB keyboard during the installation, the computer will fail to recognize the USB keyboard.

- 1** Insert the **System Recovery Media** into the DVD drive and restart the computer.
- 2** If the **Press any key to boot from DVD** message appears while booting, press any key on the keyboard.
- 3** The partition configuration screen will appear. To install Windows in the selected partition without change, press **<Enter>**.

- 4** Select a **file system** (format). To keep the current file system, press **<Enter>**.

- 5** Select the folder to install the Windows operating system.

To delete the previous version of Windows and install in the current folder, press **<L>** on the keyboard.

- 6** The subsequent procedures are the same as those after Step 5 of **<Standard Installation>**.  p.174

Samsung Recovery Solution (Optional)




- For models with a hard disk drive of 60GB or less, Samsung Recovery Solution supports the Basic and Complete Restore functions except for the Backup functions.
- A Samsung Recovery Solution may not be supplied depending on your computer model.
- In addition, the version number or other items in this manual may differ from the actual computer due to quality improvement purposes.

What is Samsung Recovery Solution?

Samsung Recovery Solution enables you to easily restore your hard disk drive to a previous state when a problem occurs with your computer.

Samsung Recovery Solution Functions

Samsung Recovery Solution provides the following functions.

Function		Description
Restore	Basic Restore	This function restores major Windows files without touching the user configuration and data when a problem occurs with the computer. It restores the files over a short time (2~3 minutes).
	Complete Restore	Using this function, you can restore your computer's hard disk drive to its initial status when your computer is no longer working properly. You can use this function even if no Restore point was saved. <div> A Complete Restore will delete all data on drive C. Therefore, make sure to backup your data to another storage device before restoring it to the initial status.</div>

Backup	Purchase Point Backup	<p>This function saves the purchase point image of drive C as a compressed image in a secure area.</p> <p>The purchase point is automatically backed up after the computer is purchased so that users can restore the computer to the purchase point.</p>
Backup	User Backup	<p>This function saves the image of drive C to drive D at a user's specified time.</p> <p>If a user has backed up the disk image using User Backup, the user can restore the computer to the backup image using Complete Restore.</p> <p>Example) You can backup the disk image after installing a favorite game or MS Office.</p>

The function for the right case!

► I cannot start Windows!

(The booting file is missing or a corrupted error message appears.)

This happens when Windows files are corrupted.

In this case, use the **Basic Restore** function of **Restore**. If the problem continues even after a Basic Restore is performed, use the **Complete Restore** function.

► The boot time increases, the system crashes and errors occur frequently!

In this case, use the **Basic Restore** function of **Restore**. If the problem continues even after a Basic Restore, use the **Complete Restore** function.


► I want to reinstall Windows only, without touching my documents!

In this case, use the **Basic Restore** function of **Restore**. It overwrites Windows and system files only.

Restoring Your Computer

Samsung Recovery Solution operates as follows when the computer is used for the first time. You have to create a backup of the purchase point according to the following procedures immediately after purchasing the computer to use the Restore function.

The overall procedures will be described here. For more detailed information on steps 3, 4 and 5, see p.181.

Setting Up Procedures	
① Turn on the power for the first time.	Turn on the power for the first time after purchasing the computer.
② Register Windows.	<p>If you turn the power on for the first time, the Register Windows screen appears.</p> <p>If you register Windows according to the instructions on the screen, the computer will be restarted.</p>
③ The Partitioning hard disk drive function is automatically launched.	<p>When the computer is restarted, the partition disk screen appears for the efficient use of disk space.</p> <div>  <p>The partition disk function is only available when turning the computer on for the first time and will not be available thereafter.</p> <p>Once you have completed the partitions, you cannot resize the partitions.</p> <p>Therefore partition the disk carefully.</p> </div>
④ Samsung Recovery Solution is automatically launched - Purchase Point Backup.	<p>When the partitioning is complete, a screen appears which allows you to backup the purchase point of drive C to drive D.</p> <p>This is a required step for backing up the purchase point of drive C for the normal operation of Samsung Recovery Solution.</p>

	<p>This backup image is used for the Complete Restore function that restores your computer to its purchase point when the computer is not working properly.</p> <p>For the backup procedures, refer to page 180.</p>
<p>⑤ After 3 days, backup the hard disk, if necessary. (p.182)</p>	<p>3 days after the Purchase Point Backup, a message appears asking if you want to backup the current status of drive C.</p> <p>The current image of drive C is saved to drive D and the last user backup image is removed.</p>

Backup Function

This function saves the image of drive C to drive D. If you backed up the disk image, you can easily restore the computer to the backup image when Windows does not work properly.

The backup function provides **Purchase Point Backup** and **User Backup** functions. Therefore, there are 2 backup images available (Purchase Point Backup and User Backup) for the Restore function.

Purchase Point Backup

If you turn your computer on for the first time, the Purchase Point Backup function is performed after registering Windows.

This function saves the purchase point image of drive C to a secure area so that users can restore the computer to the purchase point using the Complete Restore function.

Purchase Point Backup is only performed once after the computer is purchased.

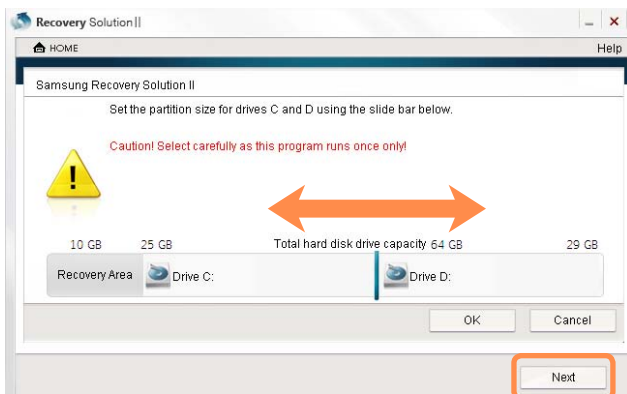
- 1 If you turn the power on for the first time, the Register Windows screen appears.
If you register Windows according to the instructions on the screen, the computer will be restarted for the Purchase Point Backup.

2 When the computer is restarted, the partition disk screen appears before proceeding with the Purchase Point Backup. Read the instructions on the screen carefully and click the **Next** button.



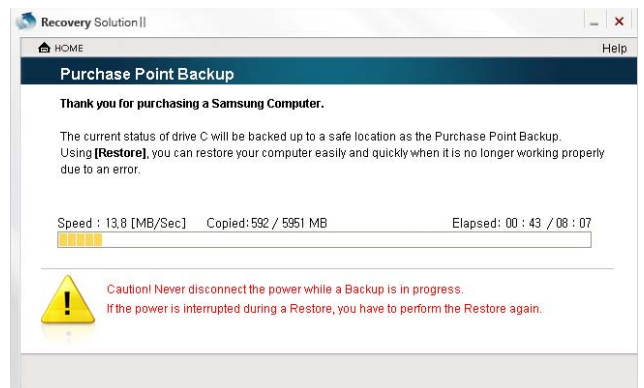
The partition disk function is only available when the computer is turned on for the first time and will not be available afterwards.

3 Partition your disk into drives C and D. Adjust the partition size using the slide bar and click the **Next** button.



Once you have completed the partitions, you cannot resize the partitions. Therefore partition the disk carefully.

4 When the partitioning is complete, the Purchase Point Backup is performed to backup the purchase point of drive C to a secure place.



This backup image is used for the Complete Restore function that restores your computer to the purchase point when the computer is not working properly.

5 When the Partition and Purchase Point Backup is complete, restart Windows.

User Backup

This function saves the image of drive C to drive D at a time specified by the user. You can backup and maintain only one copy of a User Backup image.



Since the backup image is saved on drive D, if drive D is formatted or the drive D partition is deleted, the backup image is also deleted so that you will not be able to restore the computer with the backup image.

- 1 Click **Start > All Programs > Samsung > Samsung Recovery Solution > Samsung Recovery Solution**.

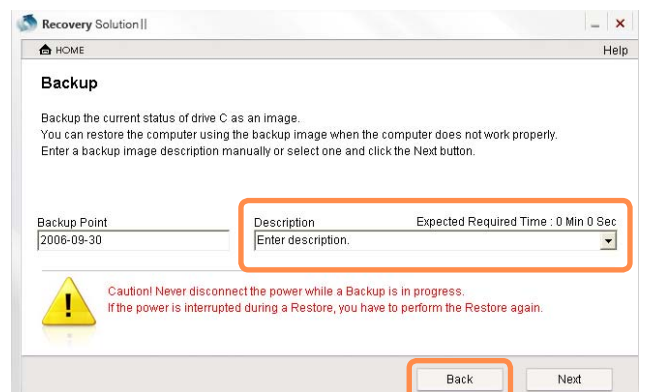
When you cannot start Windows

Turn the computer on and press the <F4> or <F7> key when the boot screen (SAMSUNG logo) appears. (If you press the key multiple times, the Windows Boot Manager screen may appear. In this case, press Enter.) After a while, the computer boots up in Restore mode displaying the SAMSUNG Recovery Solution screen.

- 2 If the initial menu screen appears, click **Backup**.
A description of the backup will be displayed on the screen.



- 3 Enter a brief description for this backup in the Description input box and click the **Next** button. The computer is restarted in Restore mode.



If the Samsung Recovery Solution program is launched for the first time after purchasing the computer, the license agreement screen appears before starting the backup. Read the agreement and click **Agree** to continue.

- 4 Select drive D to save the backup file.

- 5 When the backup is complete and the system restart message appears, click **OK** to restart the system.

When the backup is complete, a Samsung Recovery folder is created on drive D and the backup disk image is saved in the folder.

This image is used for the Complete Restore function when the computer is not working properly.

Restore Function

When your computer does not work properly due to a problem with the computer, you can restore the computer to a previous stable condition using Samsung Recovery Solution. Samsung Recovery Solution provides Basic Restore and Complete Restore functions.

What is Basic Restore?

This function restores major Windows files without touching the user configuration and data when a problem occurs with the computer.

What is Complete Restore?

This function restores your computer using the Purchase Point Backup or User Backup image when the computer does not work properly. However, note that the Complete Restore function will delete all data on drive C.



If the problem continues even after the above Basic Restore function has been performed, a Complete Restore is recommended.

Restoring Your Computer

- 1 Click **Start > All Programs > Samsung > Samsung Recovery Solution > Samsung Recovery Solution**.

When you cannot start Windows

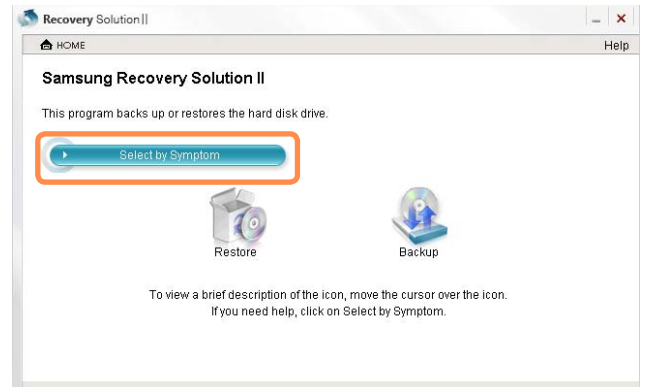
Turn the computer on and press the <F4> or <F7> key when the boot screen (SAMSUNG logo) appears. (If you press the key multiple times, the Windows Boot Manager screen may appear. In this case, press Enter.)

After a while, the computer boots up in Recovery mode displaying the SAMSUNG Recovery Solution screen.

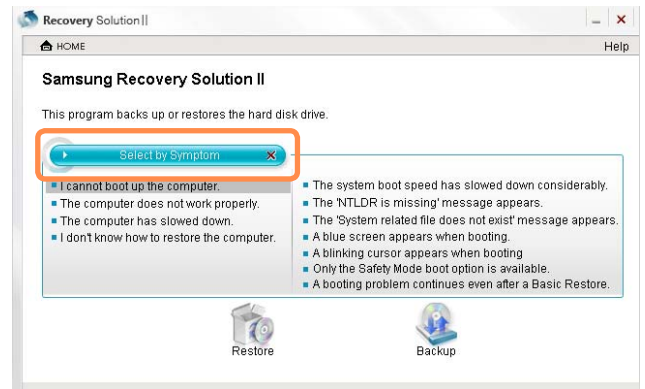


If the Samsung Recovery Solution program is launched for the first time after purchasing the computer, the license agreement screen appears before starting the restore. Read the agreement and click **Agree** to continue.

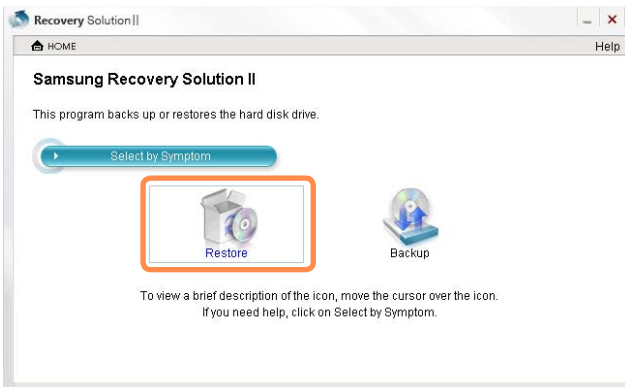
- 2 If the initial menu screen appears, click **Select by Symptom**.



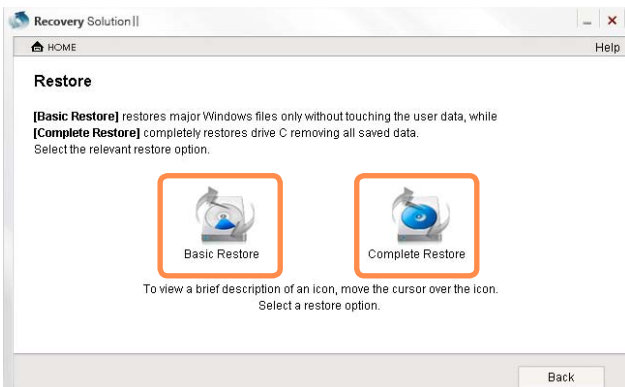
If you select a symptom, Samsung Recovery Solution will display the recommended Restore menu.



- 3 If you fail to find your symptom using Select by Symptom, close the Select by Symptom screen and click **Restore** from the main menu.



- 4 Select either **Basic Restore** or **Complete Restore** from the Restore menu.



- 5 If you have selected **Basic Restore**, and you click the **Next** button, the system is restarted and boots up in Restore mode. If you have selected **Complete Restore**, select a restore point, and then click the **Next** button.

The system is restarted in recovery mode.



The first time the computer boots up after a Complete Restore has been performed, the boot speed may slow down due to the system optimization process.

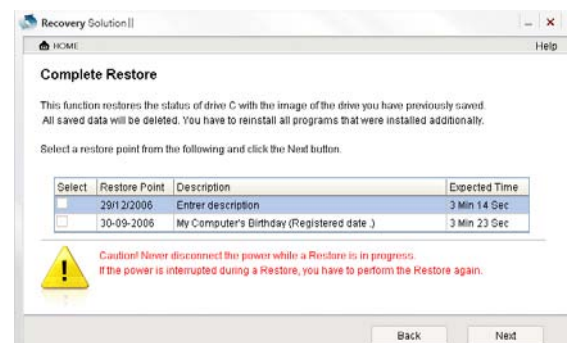


Available restore points for the Complete Restore function

In the Complete Restore function, you can select either **Purchase Point Backup** or **User Backup**.

If you have not created a User Backup, you cannot select **User Backup**.

When the computer boots up in recovery mode, the restore progress message appears. If you click **OK**, the restore is performed. When the 'Restart the System' message appears after the restore is complete, click **OK** to restart the system.



Removing Recovery Solution

If you do not need or use Samsung Recovery Solution, you can remove the Recovery Solution program.

► Removing the Samsung Recovery Solution Program



Even if you remove the Samsung Recovery Solution program, only the program is removed leaving the recovery area on the disk unchanged.

Therefore you can use the Backup, Restore and Install functions by pressing the <F4> or <F7> key while booting up even after the Samsung Recovery Solution program is removed.

- 1 Click **Start > Control Panel > Add or Remove Programs**.
- 2 Select Samsung Recovery Solution and click the **Change/Remove** button. Then the Samsung Recovery Solution program will be removed.



Q & A

This section provides information on possible problems, solutions and other references for using the system.

Display Related

Q The LCD screen is too dark or too bright

- A** Adjust the LCD brightness. For the models with Touch Sensor buttons, press the **MENU** button and click on **Brightness**  or .

For models without a Touch Sensor button, you can adjust the screen brightness by pressing the **User Defined buttons** (/) while holding down the **INTERNET** button below the **Mouse/Joystick** buttons.

Q The screen saver disturbs Media Player playing a movie or video clip after the screen saver is activated while Media Player is playing.

- A** Go to **Tools > Options > Player >** unselect **Allow screen saver during playback** in the Media Player.

Q In the following cases, the screen blinks or displays noise for a short time.

Click the Graphics Related tab, Change Resolution, Change Display Device, Remove the AC Adapter, Restart the System, Change Power Scheme.

- A** This may happen while the video driver is examining the connected device. While busy detecting, any connected display devices may blink or some noise may occur.

Q When I connect a projector, and change the settings to display the screen image on both the LCD and the projector by pressing the **MENU** button, the screen is not displayed properly.

A Press the **MENU** button and press the button to the right of the **LCD/CRT** button to switch to **LCD+CRT Clone**.
The screen may not be displayed or only part of the screen may be displayed when the LCD resolution is too low or too wide and the projector cannot support the resolution. Right-click over the Desktop, select **Properties**, select the **Settings** tab and change the Resolution to 800x600.

Q The shortcut icons are not displayed on the screen even if I press the shortcut key.

A The shortcut icons only appear when the Easy Display Manager program is installed.

Q I have connected a monitor (or projector) to the computer, but the colors on the monitor are abnormally displayed.

A Check if the monitor and computer are properly connected with the signal cable and reconnect the cable if necessary.


Q The picture on the screen trembles.

A The picture on the screen may tremble when you view some Internet pages or play some on-line games. In this case, using an external monitor is recommended.

Q I've run the Rotation function from the Menu, and the pointer on the screen does not correspond to the pointer position.

A It is recommended using an external USB mouse when the screen is pivoted.

If the above problem appears, complete the following steps.

- ❶ Right-click on the **TouchKit** () icon from the Taskbar and confirm that the **Display Pivot Support** function is **selected** (V). If it is not selected, select it by selecting the **Display Pivot Function**.
If you cannot find the TouchKit icon on the Taskbar, click **Start > All Programs > TouchKit > TouchMon**.
- ❷ Click on **Start > All Programs > TouchKit > Configure Utility** and click on **4-Point Calibration** from the **Tools** tab. If the Stylus Pen Calibration screen appears, proceed according to the instructions on the screen.

Sound Related

Q How can I configure the Recording Mixer while I am video or audio chatting?

- A**
- ❶ Double-click the **volume** icon from the Taskbar and select **Options > Properties** from the menu.
 - ❷ In the Mixer device field, select **Realtek HD Audio Input**.
 - ❸ Unselect '**Mute all**' in the Recording control and unselect '**Mute**' in the Microphone volume.
 - ❹ Select '**Mute**' in the Stereo Mixer.

Q How can I configure the Recording Mixer while broadcasting music in WinAMP?

- A**
- ❶ Double-click the **Volume** icon in the Taskbar and click on **Options**.
 - ❷ In the Mixer device field, select **Realtek HD Audio Input**.
 - ❸ Unselect '**Mute all**' in the Recording control and unselect '**Mute**' in the Stereo Mixer.
 - ❹ Select '**Mute**' in the Microphone volume if a user want to broadcast music only. Unselect '**Mute**' in the Microphone volume if a user want to broadcast music and voice.

Wired Network (LAN) Related

Q The <Wake On LAN> function

- A <Wake On LAN> is a function that activates the system from Sleep mode when a signal (such as a ping or magic packet command) arrives over the network (wired LAN).

Using the <Wake On LAN> Function

- ❶ Click on **My Network Place > View network connections** on the Desktop.
- ❷ Right-click(press and hold the Stylus Pen for more than 3 seconds) the Local Area Connection and click **Properties**.
- ❸ Click **Configure**, and select the **Power Management** tab. Select 'Allow this device to bring the computer out of standby', then click OK. Restart the system.
 - If the system in standby mode is activated when there is no received signal, use the system after disabling the <Wake On LAN> function.
 - When turning the power off when <Wake On LAN> is disabled, the LAN LED may continue to be lit up.
 - The <Wake On LAN> function operates only when the LAN is ON.
 - Connecting a wired LAN while using a wireless LAN may not activate the <Wake On LAN> function. Set the Wireless LAN to 'Disable' to use the <Wake On LAN> function.
- ❶ Click on **My Network Place > View network connections** on the Desktop.
- ❷ Right-click(press and hold the Stylus Pen for more than 3 seconds) over **Wireless Network Connection** and select **Disable**.

Q When I am connected to a 100Mbps/1Gbps wired LAN and the computer exits Sleep/hibernation mode, a message appears informing you of a connection to a 10Mbps/100Mbps wired LAN.

A When the computer exits standby/hibernate mode, restoring the network takes about 3 seconds.
When the network is restored, it operates at 100Mbps/1Gbps.

Wireless Network (WLAN) Related

Q I cannot find an AP.

► **Check the Wireless LAN LED.**

A Check if the Wireless LAN LED is on. If off, click the **MENU** button and select **Wireless LAN ON** to turn the Wireless LAN on.

► **Reinstall the driver.**

A Reinstall the driver using the software media.

► **Check the Wireless Zero Configuration (WZC) service.**

A If the “Windows cannot make this wireless connection” message appears while searching for wireless networks, it indicates that a program other than Windows is set to manage the wireless LAN settings.

► **To use the wireless LAN settings using Windows:**

A ❶ Click **Start > Control Panel > Network and Internet Connections > Network Connections > Wireless LAN Connection**, right-click and check if the “Windows manages wireless network settings (W)” option is selected in the Wireless Network tab of the Properties window. If not, select the option.

❷ Click **Start > Control Panel > Performance and Maintenance > Administrative Tools > Computer Management** and click **Services and Applications > Services**. In the right pane, double-click the Wireless Zero Configuration and check if the Startup Type is Automatic and the Status is Started.

Q I cannot connect to an AP. (The wireless connection is disconnected frequently.)

► **Check the Network Key.**

A Right-click the **Wireless Network Connections icon** from the Taskbar and click

on **'View available wireless networks'**. If wireless networks are found, it indicates that the device is operating properly but the network settings may have a problem. Please check the Network Key (Encryption Key) and the AP settings.

► **Check if there is a device nearby using the same frequency band.**

- A1** If there is a device nearby using the same frequency band such as another wireless LAN device, wireless video transceiver, microwave oven, plasma bulb, etc., channel interference may occur. If you experience interference from another device, it is recommended changing the AP channel.
- A2** When operating in IEEE802.11g mode, if there is a IEEE802.11b device operating nearby, you may experience low data rates or even disconnection as it operates in Hybrid mode.

► **Check the authentication type.**

- A** A connection may be disconnected after a period of time if the "Use IEEE 802.1x network authentication" option is selected when IEEE 802.1x authentication is not being used.

View the properties of the corresponding AP in the Wireless Network Properties. In the Authentication tab, unselect the "Use IEEE 802.1x authentication in this network" option.

For detailed information on the authentication server, ask your network administrator.

► **Check the AP settings.**

- A1** Check if the surroundings are appropriate for a wireless LAN. A wireless LAN connection may be limited by the surrounding environment and distance. Obstacles such as walls and door mats affect the quality of the wireless LAN signal. You have to install an AP in a high, open position far away from any other radio signal sources. If the AP is excessively far away, or is installed at the end of a building and you are attempting to use the wireless LAN from the other end, you may not be able to use the wireless communication normally because the signal is blocked by obstacles between you and the AP (such as a wall).
- A2** Check if the AP operates properly. If the AP is not operating properly, turn it off and on again and try again.

- A3** Check if the AP firmware is the latest version. (For more information on the AP firmware, ask the AP manufacturer or your product provider.)
- A4** Check if the AP is properly connected to the network. Connect the LAN cable from the AP to a computer and check if the network is connected properly.

- A5** Check the Network Key (Encryption Key) settings again.

If the automatic password converting function (passphrase function) is enabled and the wireless connection is normal but you cannot send data over the connection, please enter the Network Key (Encryption Key) manually.

- A6** Check the AP settings as follows.

If there are multiple APs running at the same time, check the channel setting of each AP. If the interval between the channels of the APs is narrow, you may experience electromagnetic interference. Set the channel numbers of the APs so that the intervals between the channels are maximized. (E.g., Ch1, Ch5, Ch9, Ch13)

If the SSID option is set to Hide, you will not be able to find the AP on your computer. It is recommended unselecting the Hide option of the AP. SSID (Service Set ID) is a name used to distinguish a wireless LAN from other wireless LANs.

It is recommended using Long Preamble. Preamble is a signal for data transmission synchronization. Although some APs support Short Preamble, there might be a compatibility problem.


Because 'Fixed' channel selection is more stable than 'Auto' channel selection, 'Fixed' channel selection is recommended. It is recommended not using the 'Block Any' and 'Any Connection Block' functions. Although these functions block connections at the client side when the network name is Any or Blank, it may cause a compatibility problem.


For more information on the AP settings, refer to the owner's manual supplied with the AP.

Q Although a connection has been established, I cannot connect to the Internet.

► **Check the TCP/IP settings.**

A If you cannot connect to the Internet but you are connected to an AP, check if the TCP/IP settings are configured properly.

When you are not connected to an AP, an X mark appears over the 'Wireless Network Connections' () icon in the Taskbar. If you double-click the icon, the Search for Wireless Connections window appears. Reconnect to a wireless network referring to the descriptions of **Connecting to a Wireless LAN** in the Using the Network section.

When you are connected to an AP, an X mark appears over the 'Wireless Network Connections' () icon in the Taskbar. Double-click the icon and check if the IP address is properly allocated on the Support tab. If the IP address is not properly allocated, the IP address will be displayed as follows; (e.g. 169.254.xxx.xxx).

If your network does not support DHCP, you have to manually configure an IP address by asking your network administrator.

In addition, even if your network supports DHCP, the Internet connection may not be available if the DHCP server fails to allocate an IP address to your computer.

Q I have configured both wired and wireless connections with the same IP address, but the network connections do not work properly.

A You cannot use the same IP address for wired and wireless connections. To use only one IP address for both wired and wireless connections, you must disable one of them according to your requirements in Network Connections in the Control Panel.

Q After installing the Wireless LAN Setting program, the “AEGIS Protocol (IEEE 802.1x)” protocol appears in the [Local Area Connect Properties] window.

A The protocol is a security authentication protocol that is automatically installed when the Wireless LAN Settings program is installed and does not affect the program operation.

Q I want to use the Wireless LAN power saving function to extend the system battery use time.

A You can configure this in the Samsung Battery Manager program. Run the Samsung Battery Manager and select **Options > Wireless LAN Power Saving > On** from the menu.

However, this setting may affect the performance of the Wireless LAN.

In addition, the wireless LAN connection might be disconnected while configuring this.

Q I cannot share Internet access/ files when a small office network has been set up.

A Check the McAfee SecurityCenter settings.

Launch McAfee SecurityCenter and select **Advanced > Settings > Internet and Network > Advanced > Trusted or Prohibited IP**.

Check if the IP address you wish to use has already been added. If the IP address is not added, add it by clicking the ‘**Add**’ button.

Bluetooth

Q When no headset is found or cannot be connected.

- A1** If the headset is already connected to another device, you will not be able to find the headset and cannot connect to the headset even if the headset is found. Disconnect the connection to the other device and then start the search again.
- A2** If the headset is connected to a power adapter, you cannot make a Bluetooth connection. Disconnect the power adapter and then retry.
- A3** In general, a Bluetooth headset has 2 operating modes, On/Off mode and Pairing mode. To connect the headset to another Bluetooth device such as a PC or cell phone, the headset must be in Pairing mode. Switch the headset to Pairing mode and then retry the search operation. In general, the headset in Pairing mode automatically returns to On/Off mode after a certain period of time.

Q There is no sound or sound is intermittently interrupted after connecting a headset.

- A1** If a Bluetooth headset is connected to a PC, the **Sound playback device** in the **Control Panel** is to be changed to **Bluetooth Audio** (for a mono headset) or **High Quality Bluetooth Audio** (for a stereo headset). If the **Sound playback device** in the **Control Panel** is not changed properly, there may be no sound through the headset. Check the audio settings of the **Control Panel** according to the procedures given below.

Configuring the Audio Device in the Control Panel

- ①** Click **Start > Control Panel** and double-click on **Sound and Audio Devices**.
- ②** Select the **Audio** tab in the Sound and Audio Devices Properties window.

- ③ Check if the Sound playback device and the Sound recording device are set to Bluetooth Audio (for a mono headset) or High Quality Bluetooth Audio (for a stereo headset).
- A2** When using a Bluetooth headset with another Bluetooth device, you may experience no sound, data transmission rate degradation, transmission errors or the disconnection of the device.
- Therefore, it is recommended not using another Bluetooth device when using a Bluetooth headset.
- A3** Check if the headset is properly connected and working properly.
- A4** Check the volume level of the headset and PC.
- A5** When running a multimedia program such as Windows Media Player that accesses the audio device, a headset may not be properly connected or used. To resolve this problem, exit the multimedia program, connect the headset and then launch the multimedia program again.

Game and Program Related

Q A 3D game does not work, or some functions are not working.

A Change the graphics settings of the game to '2D' or 'Software Renderer', then run the program again.

Q While playing a game, the screen may not be displayed or may be displayed abnormally when pressing the MENU button and then pressing the button to the right of the LCD/CRT button.

A Since the controls change for games and some 3D applications due to the system properties when the display device changes, pressing the MENU button and the button to the right of the LCD/CRT button while a program is running may cause the program to exit or cause the screen to be displayed abnormally.

Please use the button to the right of the LCD/CRT button before running a program. Using the button while a program is running is not recommended.

Q Running speed of a game is too slow or fast.

A Change the setting of the Power Schemes to '**Always On**'.
(Click the **Start > Control Panel > Performance and Maintenance > Power Options > Power Schemes** tab, then configure the Power schemes field to 'Always On'.)

Q The picture is not displayed properly for some games.

- A** Some games may not display the picture properly when the screen resolution is set to 1024x768 and the color quality is set to 32 bit.

For these games, set the screen resolution to 1024x768, and the color quality to 16 bit.

Q The game is not displayed smoothly on the screen.

- A** For 3D games, the texture data for the 3D screen display is saved to the system memory.

If there is insufficient system memory, the data is saved to the hard disk drive and loaded to memory when required. This operation may temporarily stop displaying the picture on the screen.

In this case, lower the game resolution or the screen settings.

Samsung Recovery Solution

Q After performing a User Backup, the 'Insufficient free space in the hard disk drive' message appears.

► **This message appears when there is insufficient free space for the User Backup.**

A If there is insufficient free space on the hard disk drive, the User Backup file cannot be saved.

For the User Backup, move or delete some files from the hard disk drive and then try again.

Q The hard disk drive capacity is different from the specifications.

- A**
- The hard disk drive capacity displayed in My Computer or Windows Explorer is calculated by regarding 1024 bytes as 1kbyte and is smaller than the actual capacity. This is just a difference from the calculation method and the capacity of the hard disk drive is the same as the specifications.
 - If your computer model is supplied with a fingerprint identification or system diagnosis program, the hard disk drive capacity may be displayed smaller than it should be because the programs use some of the hard drive capacity.
 - Since Samsung Recovery Solution is installed on your computer and it reserves approximately 10 GB to save the restoration image, the hard disk drive capacity will be smaller than the actual capacity in My Computer or Windows Explorer. The amount of hard disk drive space used by Samsung Recovery Solution may differ depending on the computer model.

You can check the actual hard disk drive capacity in the BIOS SETUP.

Other

Q I cannot run any functions.

- A1** This may happen when the computer is in the HOLD status. When pressing a button or switch in the HOLD status, the **Charge LED** blinks for a moment. Slide the HOLD switch downwards and try again.
- A2** If the computer is running on battery power, check the battery charge status.

Q The [Power Switch] does not work.

- A1** This may happen when the computer is in the HOLD status. When pressing a button or switch in the HOLD status, the **Charge LED** blinks for a moment. Slide the HOLD switch downwards and try again.
- A2** If the computer is running on battery power, check the battery charge status.

Q How can I install the program?

- A** You can additionally purchase and install the following devices for UMPC.
(See the **Installing Programs** section of the 'Getting Started Guide').
- **External USB ODD dedicated to UMPC or Compatible External USB ODD**
 - **External USB HDD**
 - **USB Data Cable**
 - **LAN Cable** (direct cable or cross cable), etc. : Since the usage of a direct cable is the same as that of a cross cable, refer to the 'Getting Started Guide'.

Q I have turned the LCD screen off with a portable USB keyboard, but I cannot turn it on again.

A When you are using an optional **Portable USB Keyboard Dedicated to UMPC**, if you have turned the **Backlit OFF** (Screen Off) by pressing the <Fn>+<F5> keys, press the <Fn>+<F5> keys on the keyboard again to turn the **Backlit ON** (Screen On).

Q I want to replace the pointing stick cap of a portable USB keyboard.

A A portable USB keyboard has a pointing stick that can be used instead of a mouse. Since a spare pointing stick cap is supplied when you purchase a USB keyboard, you can remove the cap and then insert a new one if necessary.

Q The Touch Sensor Buttons do not work.

A1 Try to press a Touch Sensor Button with your finger and not with your finger tip, so that a broader surface of your finger makes contact with the button.

A2 The UDF button only works when the Easy Button Manager program icon is registered to the Taskbar notification area. When you cannot find the icon in the Taskbar, select **Start > All Programs > Samsung > Easy Button Manager > Easy Button Manager** to launch Easy Button Manager, and try again.

A3 The VOL+/- buttons only work when the Easy Display Manager program icon is registered to the Taskbar notification area. When you cannot find the icon in the Taskbar, select **Start > All Programs > Samsung > Easy Display Manager > Easy Display Manager** to launch Easy Display Manager, and try again.

Product Specifications (NP-Q1 Ultra Premium)

The system specifications may differ depending on the derived models. For detailed system specifications, refer to the product catalogue.

CPU*	Intel® Core™ Solo mobile processor
Cache Memory*	2MB
Main Memory*	512MB~1GB, MAX 1GB, Memory type: DDR2 SODIMM
Main Chipset*	Intel 945GMS
Hard Disk Drive*	1.8" HDD, 40/60/80GB
Graphics*	Intel Graphics Media Accelerator 950
Sound Chipset	HD Audio, ALC262 Codec
Network*	Wired LAN: Marvell 88E8039 10/100 PCI Ethernet Controller Wireless LAN: 802.11BG Bluetooth 2.0+EDR
Multi Card Slot*	SD Card / MMC
Ports*	USB 2.0 x 2, Video (Monitor) Out Port, Headphone Jack, Wired LAN Port, DC-in Jack
Dimensions	227.5 x 123.9 x 29.4mm
LCD	7" WSVGA (1024x600)
Weight*	A mere 860g (1.90lb) (Without optional items)
Battery*	Lithium-Ion smart battery: 6Cells
Operating Environment	Temperature (storage) : -5 ~ 40°C (operation) : 10 ~ 32°C Humidity (storage) : 5% ~ 90% (operation) : 20% ~ 80%
Operating Voltage	100 - 240VAC
Frequency	50 / 60Hz
Output Power*	60/90W
Output Voltage	19VDC

- The (*) mark represents optional components. Optional components may not be provided or different components may be provided depending on the computer model.
- The system specifications are subject to change without notice.
- The hard disk drive capacity of a computer in which Samsung Recovery Solution is installed, is represented as smaller than the product specification.

Wireless LAN Specifications (802.11a/b/g, 802.11n Card)

Intel 802.11ABG WLAN

- **The Name of the Registered Equipment** : Special Low Power Wireless Device for Wireless Data Communication Systems.

	Item	Detailed Specifications
Physical Specifications	Dimensions	30.0 × 50.95mm (Width X Height)
	Operating Temperature And Humidity	Same as System Operations Temperature: Bet. 0°C and 70°C, Humidity: Less than 85%
Power Specifications	Power	3.3V
Network Specifications	Compatibility	IEEE 802.11a, IEEE 802.11b, IEEE 802.11g
	Operating System	Microsoft Windows XP/Vista
	Media Access Protocol (MAC)	CSMA/CA (Collision Avoidance) with Acknowledgement (ACK)
	Security	Wired Equivalent Privacy support (WEP) 64bit/128bit WPA*

- * This device supports the Wireless LAN Security Specifications WPA (Wi-Fi Protected Access) for Wi-Fi.
To connect to a WPA wireless network, you have to configure the settings according to the network connection environment. For detailed setting information, ask your network administrator.

■ Radio Specifications

RF Band	2.4GHz, 5GHz
Supported Channels	Channels allowed per country.
Device	Transceiver
Standard Output Power	MAX 10mW/MHz
Modulation Scheme	11a mode : OFDM
	11b mode : DSSS
	11g mode : OFDM
Data Rate (Mbps)*	11a mode** : 54, 48, 36, 24, 18, 12, 9, 6
	11b mode : 11, 5.5, 2, 1
	11g mode*** : 54, 48, 36, 24, 18, 12, 9, 6
Antenna Type	Built-in Antenna

* The data rate may differ from the real data transmission rate.

** 11a mode is only supported when the device is connected to an IEEE 802.11a device.
(e.g. Access Point supporting IEEE 802.11a)

*** 11g mode is only supported when the device is connected to an IEEE 802.11g device.
(e.g. Access Point supporting IEEE 802.11g)

Intel 802.11AGN WLAN

■ **The Name of the Registered Equipment** : Special Low Power Wireless Device for Wireless Data Communication Systems.

	Item	Detailed Specifications
Physical Specifications	Dimensions	30.0 × 50.95mm (Width X Height)
	Operating Temperature And Humidity	Same as System Operations Temperature: Bet. 0°C and 70°C, Humidity: Less than 85%
Power Specifications	Power	3.3V
Network Specifications	Compatibility	IEEE 802.11a, IEEE 802.11b, IEEE 802.11g, IEEE 802.11n
	Operating System	Microsoft Windows XP/Vista
	Media Access Protocol (MAC)	CSMA/CA (Collision Avoidance) with Acknowledgement (ACK)
	Security	Wired Equivalent Privacy support (WEP) 64bit/128bit WPA*

* This device supports the Wireless LAN Security Specifications WPA (Wi-Fi Protected Access) for Wi-Fi.
To connect to a WPA wireless network, you have to configure the settings according to the network connection environment. For detailed setting information, ask your network administrator.

■ Radio Specifications

RF Band	2.4GHz
Supported Channels	Channels allowed per country.
Device	Transceiver
Standard Output Power	MAX 10mW
Modulation Scheme	11b mode : DSSS
	11g mode : OFDM
Data Rate (Mbps)*	11b mode : 11, 5.5, 2, 1
	11g mode** : 54, 48, 36, 24, 18, 12, 9, 6
Antenna Type	Built-in Antenna

* The data rate may differ from the real data transmission rate.

** 11g mode is only supported when the device is connected to an IEEE 802.11g device. (e.g. Access Point supporting IEEE 802.11g)

Wireless LAN Specifications (802.11BG Card)

Intel 802.11BG WLAN

- **The Name of the Registered Equipment** : Special Low Power Wireless Device for Wireless Data Communication Systems.

	Item	Detailed Specifications
Physical Specifications	Dimensions	30.0 × 50.95mm (Width X Height)
	Operating Temperature And Humidity	Same as System Operations Temperature: Bet. 0°C and 70°C, Humidity: Less than 85%
Power Specifications	Power	3.3V
Network Specifications	Compatibility	IEEE 802.11b, IEEE 802.11g
	Operating System	Microsoft Windows XP/Vista
	Media Access Protocol (MAC)	CSMA/CA (Collision Avoidance) with Acknowledgement (ACK)
	Security	Wired Equivalent Privacy support (WEP) 64bit/128bit WPA*

- * This device supports the Wireless LAN Security Specifications WPA (Wi-Fi Protected Access) for Wi-Fi.
To connect to a WPA wireless network, you have to configure the settings according to the network connection environment. For detailed setting information, ask your network administrator.

■ Radio Specifications

RF Band	2.4GHz
Supported Channels	Channels allowed per country.
Device	Transceiver
Standard Output Power	MAX 10mW
Modulation Scheme	11b mode : DSSS
	11g mode : OFDM
Data Rate (Mbps)*	11b mode : 11, 5.5, 2, 1
	11g mode** : 54, 48, 36, 24, 18, 12, 9, 6
Antenna Type	Built-in Antenna

* The data rate may differ from the real data transmission rate.

** 11g mode is only supported when the device is connected to an IEEE 802.11g device. (e.g. Access Point supporting IEEE 802.11g)

Atheros 802.11BG WLAN

■ **The Name of the Registered Equipment** : Special Low Power Wireless Device for Wireless Data Communication Systems.

Item		Detailed Specifications
Physical Specifications	Dimensions	30.0 × 50.95mm (Width X Height)
	Operating Temperature And Humidity	Temperature: Bet. 0°C and 70°C, Humidity: Less than 85%
Power Specifications	Power	3.3V
Network Specifications	Compatibility	IEEE 802.11b, IEEE 802.11g
	Operating System	Microsoft Windows XP/Vista
	Media Access Protocol (MAC)	CSMA/CA (Collision Avoidance) with Acknowledgement (ACK)
	Security	Wired Equivalent Privacy support (WEP) 64bit/128bit WPA*

* This device supports the Wireless LAN Security Specifications WPA (Wi-Fi Protected Access) for Wi-Fi.
To connect to a WPA wireless network, you have to configure the settings according to the network connection environment. For detailed setting information, ask your network administrator.

■ Radio Specifications

RF Band	2.4GHz
Supported Channels	Channels allowed per country.
Device	Transceiver
Standard Output Power	MAX 10mW, Max 511mW/Ch
Modulation Scheme	11b mode : DSSS
	11g mode : OFDM
Data Rate (Mbps)*	11b mode : 11, 5.5, 2, 1
	11g mode** : 54, 48, 36, 24, 18, 12, 9, 6
Antenna Type	Built-in Antenna

* The data rate may differ from the real data transmission rate.

** 11g mode is supported only when you are connected to an IEEE 802.11g device (e.g. An Access Point supporting IEEE 802.11g).

Registered Trademarks

Samsung is a registered trademark of Samsung Co., Ltd.

SENS is a registered trademark of Samsung Electronics Co., Ltd.

Intel, Pentium/Celeron are registered trademarks of the Intel Corporation.

Microsoft, MS-DOS, and Windows are registered trademarks of the Microsoft Corporation.

“Memory Stick” and  are trademarks of the Sony Corporation.

All other product or company names mentioned herein are registered trademarks of their respective companies.

Macrovision Certification

This product incorporates copyright protection technology that is protected by method claims of certain U.S. patents and other intellectual property rights owned by Macrovision Corporation and other rights owners. Use of this copyright protection technology must be authorized by Macrovision Corporation, and is intended for home and other limited viewing uses only unless otherwise authorized by Macrovision Corporation. Reverse engineering or disassembly is prohibited.

Glossary

The Glossary lists the terminologies used in this User Guide. For terminologies other than these, look in Windows Help.

Backup

A way to save the current data to restore it later if necessary. A backup is a way to restore computer data when the data or computer is damaged.

Client

This refers to a computer that uses a shared network resource provided by a server.

DDR SDRAM (Double Data Rate Synchronous Dynamic Random Access Memory)

DRAM is a memory type whose cells consist of a capacitor and transistor manufactured at a low price. SDRAM is a memory type whose performance has been improved by synchronizing the clock with the external CPU clock. DDR SDRAM is a memory type whose performance has been improved by doubling the operating speed of the SDRAM and is widely used nowadays. This computer uses DDR SDRAM.

Device Manager

An administrative tool used to manage computer devices. You can add or remove hardware or update a device driver using the Device Manager.

Direct X

An application interface developed to enable Windows application programs to access hardware devices at a very high speed. Since the operating speed of graphics, memory and sound cards must be very fast to provide high quality video and sound for games, Direct X enables faster control and interaction between applications and hardware devices. By using Direct X, the multimedia performance of Windows has been hugely improved.

Driver

Software that interacts between the hardware and the operating system. An operating system knows the hardware information and controls the hardware. In general, a driver is supplied with the corresponding hardware device.

DVD (Digital Versatile Disk)

DVD was developed to replace CD (compact disk). Although the shape and size of the disc are the same as that of a CD, the capacity of a DVD is at least 4.7GB while the capacity of a CD is 600MB. DVD video is digital unlike VHS (analog) video and supports MPEG2 compression and digital audio. To play a DVD, a DVD drive is required.

Firewall

A security system used to protect an internal network or intranet from external networks through an authentication procedure.

Hibernation Mode

A power mode that saves all data in memory to the hard disk and turns the CPU and hard disk off. When canceling Hibernation Mode, all application programs that were running are restored to their last state.

Icon

This refers to a small image that represents a file that users can use.

LAN (Local Area Network)

A communications network connecting computers, printers and other devices within a local area such as within a building. A LAN enables all connected devices to interact with other devices on the network. The current LAN uses the Ethernet media access control method developed in the early 1980s. To connect to an Ethernet, a network card called a LAN card, Ethernet card or network interface card is required. To exchange data between computers, a protocol is required besides the hardware equipment. Windows XP uses TCP/IP as the default protocol.

LCD (Liquid Crystal Display)

There are Passive Matrix and Active Matrix LCD types. This computer uses the Active Matrix type LCD called a TFT LCD. Since an LCD is implemented by transistors instead of a cathode-ray tube unlike a CRT, its size can be slim. And because it does not blink, it reduces eye strain.

Network

A group of computers and devices, such as printers and scanners, connected by a communications link. A network can be either small or large and can be connected permanently through cables or temporarily through telephone lines or wireless links. The biggest network is the Internet, a worldwide network.

Network Administrator

A user who plans, configures and manages network operations. Sometimes, a network administrator is called a system administrator.

Notification Area

This refers to the right area of the Taskbar including program icons such as the volume control, the power options and the time.

Power Schemes

This refers to a pre-determined power management option group. For example, you can set the time the computer waits before entering Standby Mode, or before the monitor or hard drive turns off. The settings are saved as a power scheme.

Quick Launch

This refers to a toolbar that can be configured so that you can launch a program such as Internet Explorer or display the Windows Desktop with one click. You can add any icon to the quick launch area of the Taskbar and launch frequently used program by clicking that icon.

Server

In general, a server refers to a computer that provides shared resources for network users.

Share

This refers to setting a resource of a computer such as a folder or printer so that other users can also use it.

Shared Folder

A folder that can be used by other users on the network.

Sleep Mode

A power mode that enables computers to save power consumption when they are not being used. When a computer is in Sleep Mode, the data on the computer memory is not saved to the hard disk. If the power is turned off, the data in memory will be lost.

System File

System Files refer to files that are read and used by the Windows operating system. In general, system files must not be deleted or moved.

USB (Universal Serial Bus)

This refers to a serial interface standard developed to replace the conventional interface standards such as Serial and PS/2. While USB 1.1 supports 12Mbps (12 million bits per second), USB 2.0 supports a data rate that is 40 times (480Mbps) faster than that of USB 1.1. The data rate of USB 2.0 is equivalent to that of IEEE1394. Therefore USB 2.0 is used for A/V devices supported by IEEE 1394 and a 2nd HDD and CDRW that require a high data rate.

Windows Media Player

A multimedia program included with Windows. Using this program, you can play a media file, create an audio CD, listen to a radio broadcast, search and manage media files, and copy files to a portable device, etc.

Index

A

Adjusting the Volume	72
AVStation premium	126
AVStation Viewer	136

B

Battery	160
Battery Calibration	165
BIOS	151
Bluetooth	109
Boot Priority	159
Button	56

C

Charge	161
Connect / Output Monitor	68
Connecting AP / AP	90
Control Panel	82
CyberLink PowerDVD	122

D

Desktop / Change	78
------------------	----

E

Entering Text	50
---------------	----

H

Help	80
------	----

M

Multi Media	118
-------------	-----

N

Network	87
Network Status Diagnosis	107

P

Password	156
Playing Music	127, 138
Product Specifications	205
Program	117

R

Recorder	72
Remaining Battery Charge	161
Resolution / Color	86

S

Safety Precautions	8
Samsung Update Plus	124
SlideShow	131
Status Indicators	36
Stylus Pen	46

U

User Accounts / Switch User	84
-----------------------------	----

V

Video Play	134
Volume Control	72

W

Windows XP	75
Wired Network	88
Wireless Network	90

Contact SAMSUNG WORLD WIDE

[U.S.A. / U.K.] Contact SAMSUNG WORLD WIDE

If you have any comments or questions regarding a Samsung products, contact the SAMSUNG customer care center.

Customer Care Center	TEL	Web Site
U.S.A.	1-800-SAMSUNG (726-7864)	www.samsung.com/us
U.K.	0870-SAMSUNG (726-7864)	www.samsung.com/uk

[FRANCE] Comment contacter Samsung dans le monde

Si vous avez des suggestions ou des questions concernant les produits Samsung, veuillez contacter le Service Consommateurs Samsung.

Customer Care Center	TEL	Web Site
FRANCE	3260 SAMSUNG (726-7864) 08 25 08 65 65 (€ 0,15/Min)	www.samsung.com/fr

[GERMANY] Kontakt zu Samsung

Falls Sie Fragen oder Anregungen zu Samsung-Produkten haben, wenden Sie sich bitte an den Samsung-Kundendienst.

Customer Care Center	TEL	Web Site
GERMANY	01805 121213 (€ 0,14/Min)	www.samsung.de

[SPAIN] Contacte con SAMSUNG WORLD WIDE

Si tiene alguna pregunta o comentario referente a nuestros productos, por favor contacte con nuestro Servicio de Atención al Cliente.

Customer Care Center	TEL	Web Site
SPAIN	902 10 11 30	www.samsung.com/es

[ITALY] Contatta SAMSUNG

Se hai commenti o richieste sui prodotti Samsung contatta il nostro Servizio Clienti.

Customer Care Center	TEL	Web Site
ITALY	800-SAMSUNG (726-7864)	www.samsung.com/it

[RUSSIA / UKRAINE] Свяжитесь с SAMSUNG по всему миру

Если у вас есть предложения или вопросы по продуктам Samsung, связывайтесь с информационным центром Samsung.

Customer Care Center	TEL	Web Site
RUSSIA	8-800-555-55-55	www.samsung.ru
UKRAINE	8-800-502-0000	www.samsung.ua

[CHINA] 三星全球服务网

如果您对三星产品有任何咨询或建议，请联系三星客服中心

Customer Care Center	TEL	Web Site
CHINA	800-810-5858 010-6475 1880	www.samsung.com.cn

[HONGKONG] Contact SAMSUNG WORLD WIDE

If you have any comments or questions regarding a Samsung products, contact the SAMSUNG customer care center.

Customer Care Center	TEL	Web Site
HONGKONG	3698-4698	www.samsung.com/hk