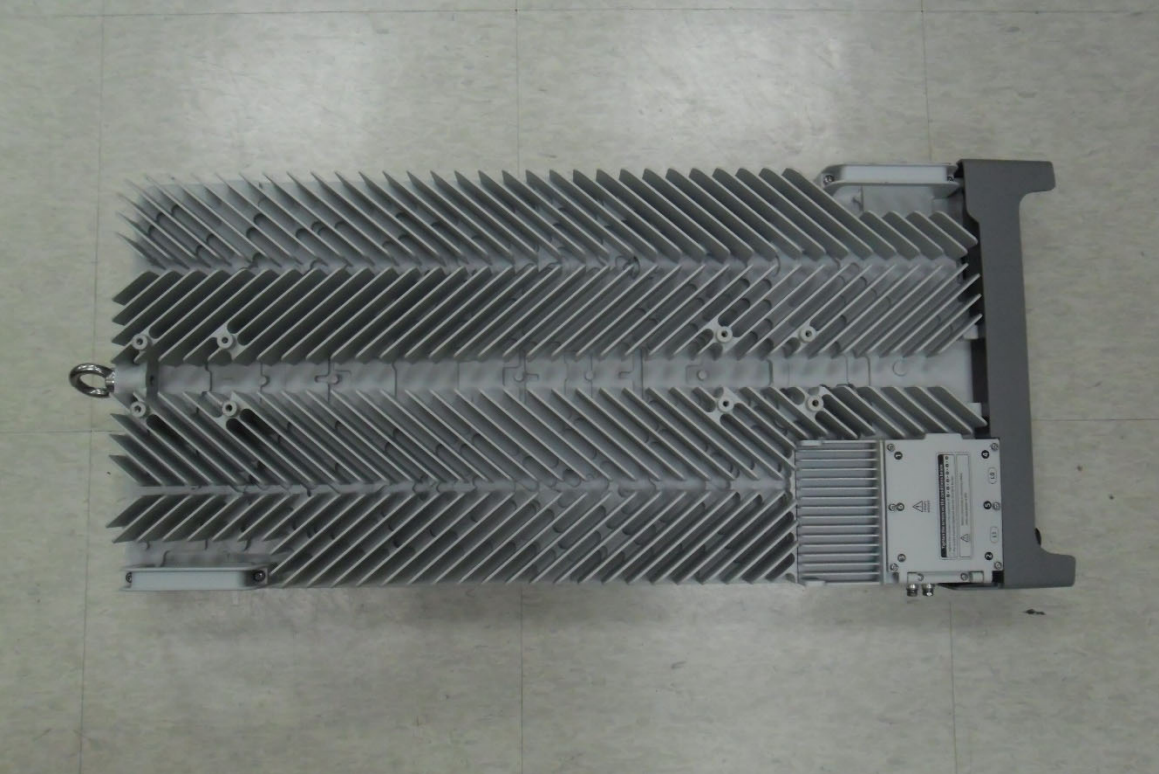


External Photographs



Front



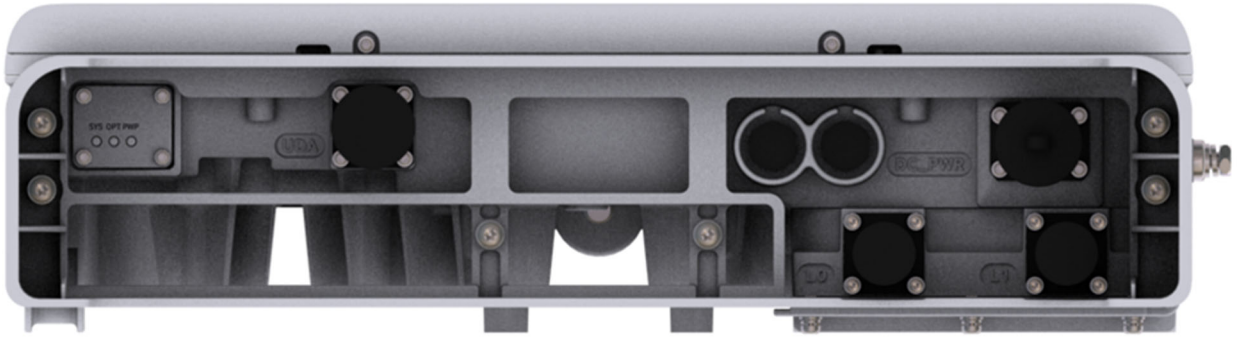
Rear



Top



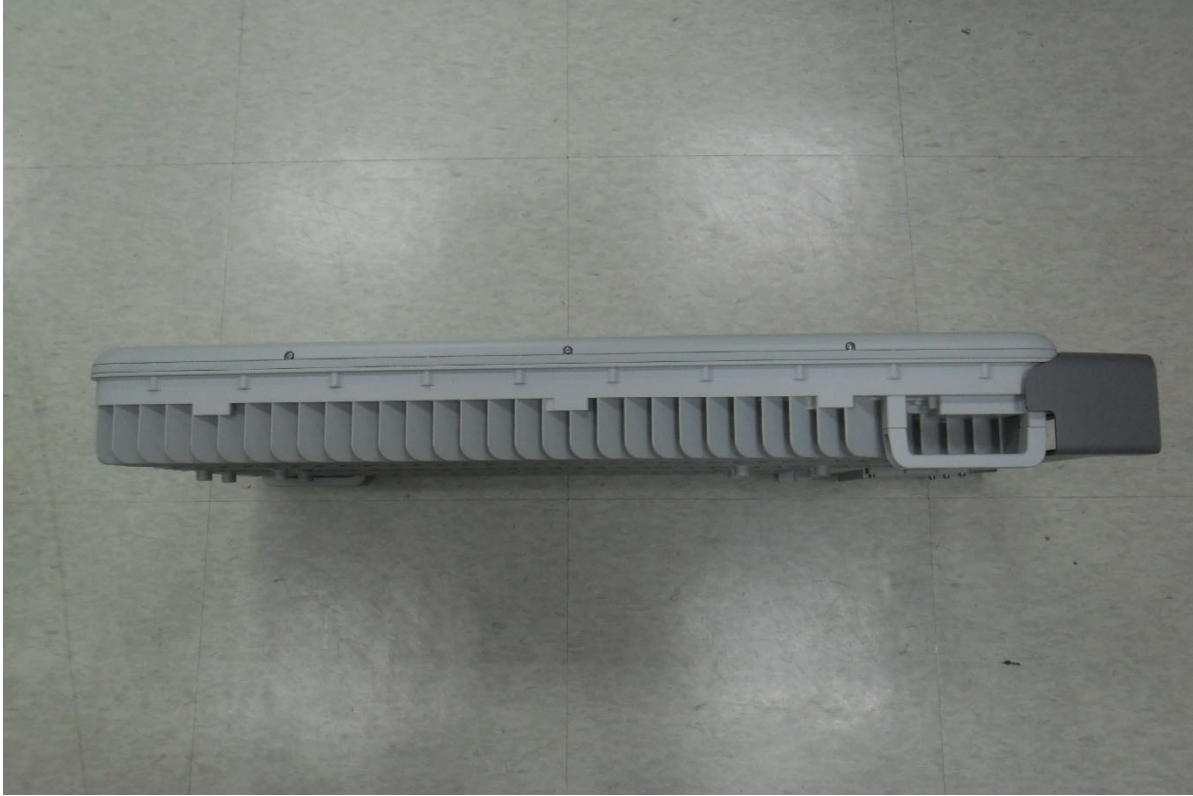
Bottom



Bottom

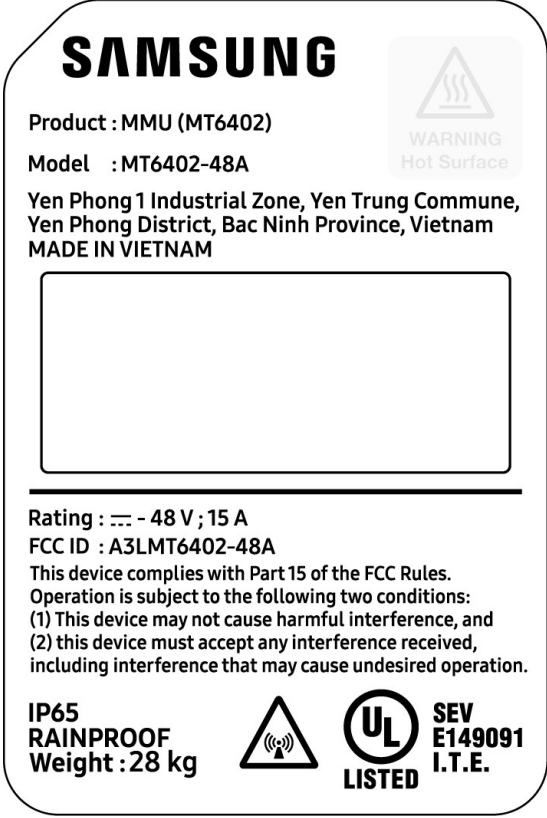




Right Side



Left Side

- Label and location

Label	Position
 <p>SAMSUNG</p> <p>Product : MMU (MT6402) Model : MT6402-48A</p> <p>Yen Phong 1 Industrial Zone, Yen Trung Commune, Yen Phong District, Bac Ninh Province, Vietnam MADE IN VIETNAM</p> <p>WARNING Hot Surface</p> <p>Rating : ~ - 48 V ; 15 A FCC ID : A3LMT6402-48A</p> <p>This device complies with Part 15 of the FCC Rules. Operation is subject to the following two conditions: (1) This device may not cause harmful interference, and (2) this device must accept any interference received, including interference that may cause undesired operation.</p> <p>IP65 RAINPROOF Weight : 28 kg</p> <p>UL SEV E149091 LISTED I.T.E.</p>	 
	<ul style="list-style-type: none"> • Label is laser printing on aluminum plate • Label is attached to the side of the product by adhesive material