

45020131428

SMD
PBA

ARM
SAMSUNG 147
SAMSUNG 3C46MOX01-EDRO

ML1440/XR8
V0.10

SAMSUNG 139
K4S6416320-TC75

Samsung
53.010927

ML-1410 JC92-01392A REV 1.2 2L

LSU

PANEL

NEVE

HVPS

THERM

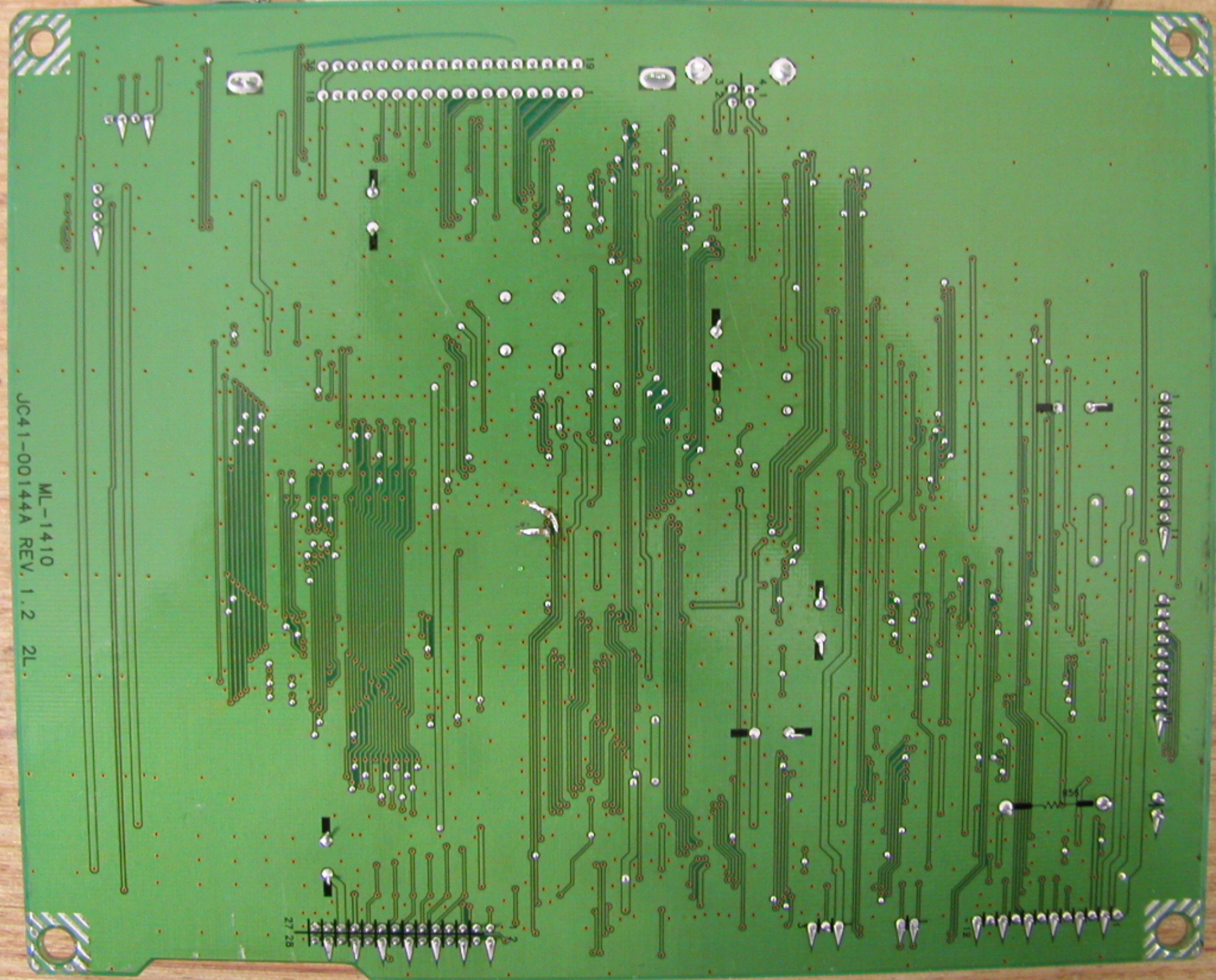
EXIT

ENGINE

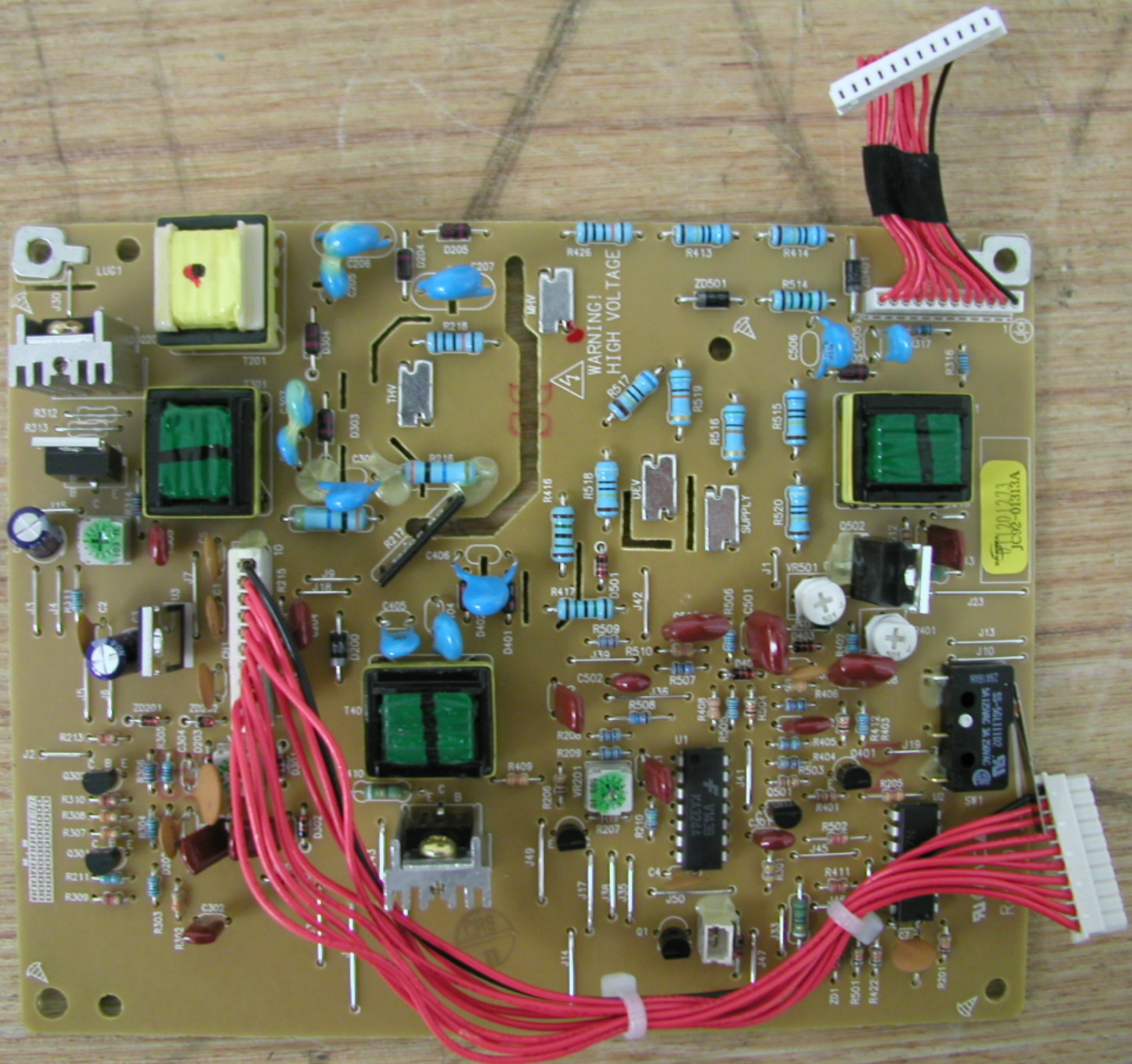
USB

SERIAL

ML-1410
JC41-00144A REV. 1.2 2L



27 28



WARNING!
HIGH VOLTAGE

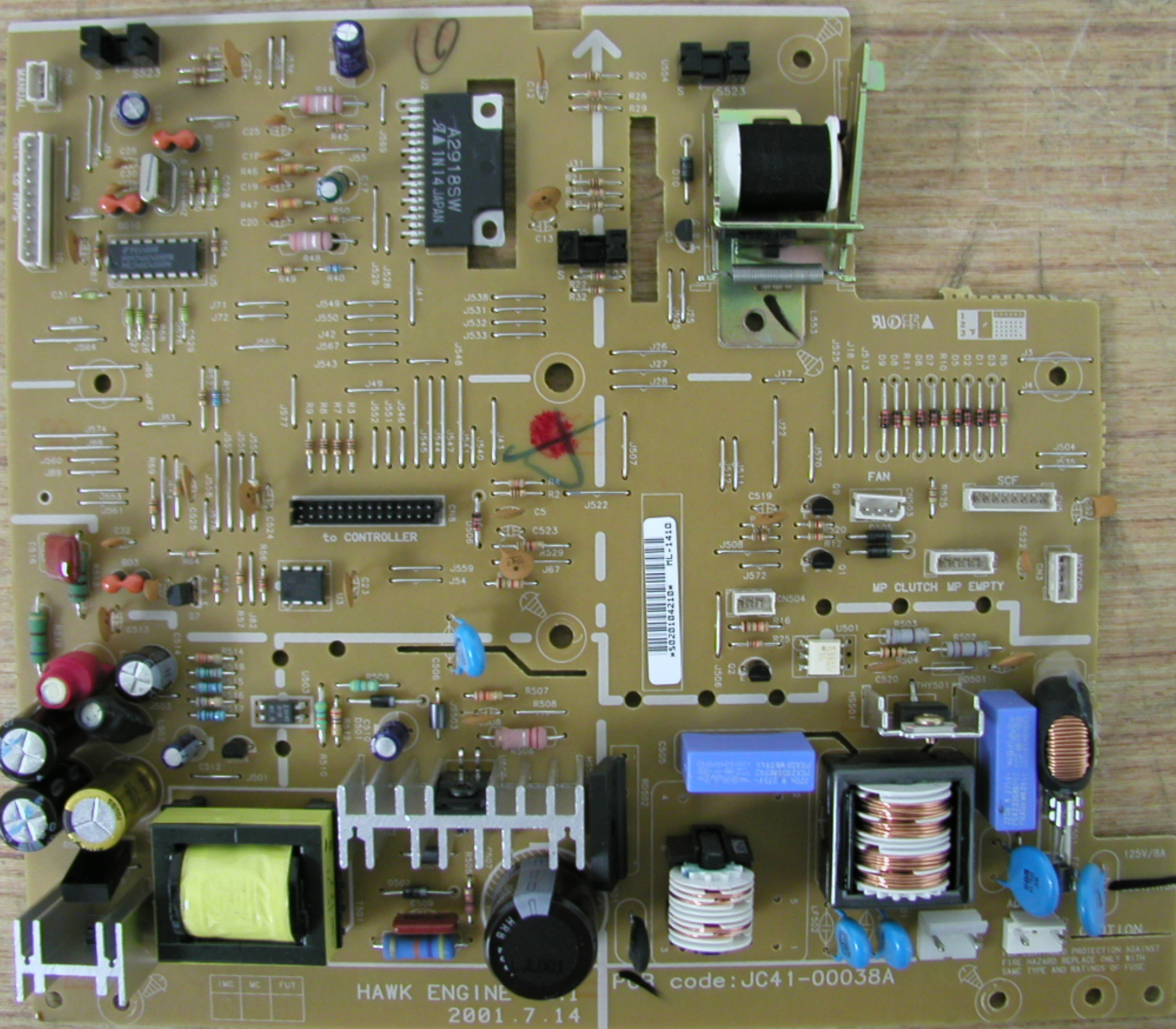
201271
JC92-01313A

201271
JC92-01313A

TYZC27A
0537A

201271
JC92-01313A

- Resistors: R201, R202, R203, R204, R205, R206, R207, R208, R209, R210, R211, R212, R213, R214, R215, R216, R217, R218, R219, R220, R301, R302, R303, R304, R305, R306, R307, R308, R309, R310, R311, R312, R313, R314, R315, R316, R317, R318, R319, R320, R401, R402, R403, R404, R405, R406, R407, R408, R409, R410, R411, R412, R413, R414, R415, R416, R417, R418, R419, R420, R501, R502, R503, R504, R505, R506, R507, R508, R509, R510, R511, R512, R513, R514, R515, R516, R517, R518, R519, R520, R521, R522, R523, R524, R525, R526, R527, R528, R529, R530, R531, R532, R533, R534, R535, R536, R537, R538, R539, R540, R541, R542, R543, R544, R545, R546, R547, R548, R549, R550, R551, R552, R553, R554, R555, R556, R557, R558, R559, R560, R561, R562, R563, R564, R565, R566, R567, R568, R569, R570, R571, R572, R573, R574, R575, R576, R577, R578, R579, R580, R581, R582, R583, R584, R585, R586, R587, R588, R589, R590, R591, R592, R593, R594, R595, R596, R597, R598, R599, R600.
- Capacitors: C201, C202, C203, C204, C205, C206, C207, C301, C302, C303, C304, C305, C306, C307, C308, C309, C310, C311, C312, C313, C314, C315, C316, C317, C318, C319, C320, C401, C402, C403, C404, C405, C406, C407, C408, C409, C410, C411, C412, C413, C414, C415, C416, C417, C418, C419, C420, C501, C502, C503, C504, C505, C506, C507, C508, C509, C510, C511, C512, C513, C514, C515, C516, C517, C518, C519, C520, C521, C522, C523, C524, C525, C526, C527, C528, C529, C530, C531, C532, C533, C534, C535, C536, C537, C538, C539, C540, C541, C542, C543, C544, C545, C546, C547, C548, C549, C550, C551, C552, C553, C554, C555, C556, C557, C558, C559, C560, C561, C562, C563, C564, C565, C566, C567, C568, C569, C570, C571, C572, C573, C574, C575, C576, C577, C578, C579, C580, C581, C582, C583, C584, C585, C586, C587, C588, C589, C590, C591, C592, C593, C594, C595, C596, C597, C598, C599, C600.
- Diodes: D201, D202, D203, D204, D205, D301, D302, D303, D304, D305, D306, D307, D308, D309, D310, D311, D312, D313, D314, D315, D316, D317, D318, D319, D320, D401, D402, D403, D404, D405, D406, D407, D408, D409, D410, D411, D412, D413, D414, D415, D416, D417, D418, D419, D420, D501, D502, D503, D504, D505, D506, D507, D508, D509, D510, D511, D512, D513, D514, D515, D516, D517, D518, D519, D520, D521, D522, D523, D524, D525, D526, D527, D528, D529, D530, D531, D532, D533, D534, D535, D536, D537, D538, D539, D540, D541, D542, D543, D544, D545, D546, D547, D548, D549, D550, D551, D552, D553, D554, D555, D556, D557, D558, D559, D560, D561, D562, D563, D564, D565, D566, D567, D568, D569, D570, D571, D572, D573, D574, D575, D576, D577, D578, D579, D580, D581, D582, D583, D584, D585, D586, D587, D588, D589, D590, D591, D592, D593, D594, D595, D596, D597, D598, D599, D600.
- Transformers: T201, T301, T401.
- ICs: U1 (TYZC27A), U2, U3, U4, U5, U6, U7, U8, U9, U10, U11, U12, U13, U14, U15, U16, U17, U18, U19, U20, U21, U22, U23, U24, U25, U26, U27, U28, U29, U30, U31, U32, U33, U34, U35, U36, U37, U38, U39, U40, U41, U42, U43, U44, U45, U46, U47, U48, U49, U50, U51, U52, U53, U54, U55, U56, U57, U58, U59, U60, U61, U62, U63, U64, U65, U66, U67, U68, U69, U70, U71, U72, U73, U74, U75, U76, U77, U78, U79, U80, U81, U82, U83, U84, U85, U86, U87, U88, U89, U90, U91, U92, U93, U94, U95, U96, U97, U98, U99, U100.
- Other: J1, J2, J3, J4, J5, J6, J7, J8, J9, J10, J11, J12, J13, J14, J15, J16, J17, J18, J19, J20, J21, J22, J23, J24, J25, J26, J27, J28, J29, J30, J31, J32, J33, J34, J35, J36, J37, J38, J39, J40, J41, J42, J43, J44, J45, J46, J47, J48, J49, J50, J51, J52, J53, J54, J55, J56, J57, J58, J59, J60, J61, J62, J63, J64, J65, J66, J67, J68, J69, J70, J71, J72, J73, J74, J75, J76, J77, J78, J79, J80, J81, J82, J83, J84, J85, J86, J87, J88, J89, J90, J91, J92, J93, J94, J95, J96, J97, J98, J99, J100.



A2918SW
A IN14 JAPAN

0129010205

HAWK ENGINE
2001.7.14

PCB code: JC41-00038A

CAUTION
PROTECTION AGAINST
FIRE HAZARD REPLACE ONLY WITH
SAME TYPE AND RATINGS OF FUSE

IMC	MC	FUT

ROHM

FAN

SCF

MP CLUTCH MP EMPTY

125V/8A

