

EMC TEST REPORT

Project No.	LBE20161563	Revision No.	None
FCC ID	A3LLS27E360		
Applicant	Name of organization	Samsung Electronics Co., Ltd.	
	Address	Samsung Electronics America QA Lab 19 Chapin Rd. Building D Pine Brook NJ 07058	
	Date of application	Apr 25, 2016	
EUT Equipment Under Test	Type of device	Class B personal computers and peripherals	
	Equipment authorization	<input type="checkbox"/> Declaration of Conformity <input checked="" type="checkbox"/> Certification <input type="checkbox"/> Verification	
	Kind of product	LCD MONITOR	
	Model No.	LS27E36* The symbol "*" in the model name can be any alphanumeric character	
	Variant Model No.	-	
Manufacturer	Tianjin Samsung Electronics Co., LTD. Weisi Rd. Micro-Electronic Industrial Park, Jingang Rd. Xiqing Dist, Tianjin, 300385 China No.20 Jiangtai Road, the West Zone of TEDA ,Tianjin, People's Republic of China		
Applied Standards	FCC Part 15, Subpart B class B		
	ANSI C63.4-2014		
Test period	Apr 25, 2016 ~ Apr26, 2016		
Issue date	Apr 26, 2016		

Test result : Complied

The equipment under test has found to be compliant with the applied standards.
(Refer to the attached test result for more detail.)

Tested by : Jie Yang



Reviewed by : Zhongyuan Gao



The test results in this report only apply to the tested sample. This report must not be reproduced, except in full, without written permission from CSQAL



TSEC Wei 4 Road, Microelectronics Industrial Park, Jingang High way, Tianjin, China
Tel: 86 22 23961234, Fax: 86 22 23961234-5214

According to Sec. 2.1077, 47 CFR of the FCC Rules.

This device complies with Part 15 of the FCC Rules. Operation is subject to the following two conditions: (1) This device may not cause harmful interference, and (2) This device must accept any interference received, including interference that may cause undesired operation.

Equipment EUT Type	Class B personal computers and peripherals
Kind of product	LCD Monitor
Trade Name	Samsung Electronics
Model	LS27E36*
Applied Rules	FCC Part 15, Subpart B Class B
	ANSI C63.4-2014
Manufacturer	Tianjin Samsung Electronics Co., LTD. Weisi Rd. Micro-Electronic Industrial Park, Jingang Rd. Xiqing Dist, Tianjin,300385 China No.20 Jiangtai Road, the West Zone of TEDA ,Tianjin, People's Republic of China

We hereby *declare that* the equipment bearing the trade name and model number specified above was tested conforming to the applicable FCC Rules under the most accurate measurement standards possible, and that all the necessary steps have been taken and are in force to assure that production units of the same equipment will continue to comply with the Commission's requirements.


U.S. RESPONSIBLE PARTY	Samsung Electronics America QA Lab 19 Chapin Rd. Building D Pine Brook NJ 07058
CONTACT PERSON	 <u>Mr. Chan-ho Youn, Manager</u> E-Mail : jjano.youn@samsung.com Tel : 1-973-808-6362 Fax : 1-973-808-6361

Table of contents

1. Report information

- 1.1 Revision history
- 1.2 Sample calculation

2. Summary of test results

- 2.1 Emission

3. General Information

- 3.1 Test facility

4. Test configuration

- 4.1 Test Peripherals
- 4.2 EUT operating mode
- 4.3 Details of Sampling
- 4.4 Used cable description
- 4.5 EUT Description
- 4.6 Description of the EUT exercising method
- 4.7 Measurement uncertainty

5. Result of individual tests

- 5.1 Conducted disturbance
- 5.2 Radiated disturbance

Appendix – EUT photography

1. Report information

1.1 Revision history

No.	Revised detailed information
Issue 0	There are no revisions and this version is basic test report.

1.2 Sample calculation

1.2.1 Conducted disturbance (at 10 MHz)

- Class B limit = 60 dB μ V (Quasi-peak limit)
- Level (50 dB μ V) = Meter Reading (40.2 dB μ V) + factor (9.8 dB, AMN factor 9.7 dB + Cable loss 0.1 dB)
- Margin (10 dB) = Limit (60 dB μ V) – Level (50 dB μ V) = 10 dB below limit

1.2.2 Radiated disturbance (at 100 MHz)

- Class B limit = 40 dB μ V/m at 3 m
- Level (30 dB μ V/m) = Meter Reading (50 dB μ V) + factor (- 20 dB(1/m), antenna factor + cable loss – amplifier gain)
- Margin (10 dB) = Limit (40 dB μ V/m) – Level (30 dB μ V/m) = 10 dB below limit

2. Summary of test results

The EUT has been tested according to the following specifications:

Applied	Test type	Applied standard	Result	Remarks
<input checked="" type="checkbox"/>	Conducted Disturbance (Mains Port)	FCC Part 15 Subpart B	Complied	Meets Class B Limit
<input checked="" type="checkbox"/>	Radiated Disturbance	ANSI C63.4-2014	Complied	Meets Class B Limit

- Note : These results are deemed satisfactory evidence of compliance with ICES-003 of the Canadian Interference-Causing Equipment Regulations.

3. General Information

3.1 Test facility

The following firm has submitted the information required by Section 2.948 of the FCC Rules for measuring devices subject to Certification under Parts 15 & 18. The FCC takes no responsibility regarding the capability of this firm for performing the required measurements. Accordingly, this firm should not advertise or otherwise imply FCC approval of CSQAL.

CHINA SAMSUNG QUALITY ASSURANCE LABORATORY is LOCATED ON Block D, 17 - 19, Wei 4 Road, Microelectronics Industrial Park, Jingang Highway, Tianjin China.

Registration Number: 745769

E-mail Address: zhongyuan.gao@samsung.com

Phone Number:86-22-2396-1234-5211

All testing are performed in Semi-anechoic chambers conforming to the site attenuation

Characteristics defined by ANSI C63.4, CISPR 22, 16-1 and 16-2 and Shielded rooms.

CSQAL is operated as testing laboratory in accordance with the requirements of ISO/IEC 17025:2005.

4. Test Setup configuration

4.1 Test Peripherals

The peripherals which were interconnected to the EUT during the test are as follows:

Item	Model No.	Serial No.	Manufacturer	Note
LCD Monitor	LS27E360	-	Samsung	EUT
Adapter	A2514_KSM	CN07BN4400865ASE38H1PY3JX	SEM	
PC	DM-V200-PA15	ZLPZ9WAZ600123A	Samsung	-
Printer	CLP-367W	Z8TEBJBC800037K	Samsung	-
Printer	CLP-365W	Z8DLBABC200070K	Samsung	-
USB Keyboard	SK-8185	OY526K	Dell	-
USB Mouse	MOC5UO	JOG00G9L	Dell	-

4.2 EUT operating mode(s)

To achieve compliance applied standard specification, the following mode(s) were made during compliance testing:

Operating Mode 1	VGA IN
Operating Mode 2	HDMI IN

4.3 Details of Sampling

Customer selected, single unit.

4.4 Cable description

The type(s) of cables which were connected to the ports (of the EUT) are as follows:

No	Connect Cable	Length [m]	Ferrite core [Y/N]	Remark
1	HDMI IN	1.5	Y	To PC
2	VGA IN	1.5	Y	To PC
3	POWER	1.8	N	For EUT

4.5 EUT Description

The following features describe EUT represented by this report:

Test model: **LS27E360**

Maximum Clock Frequency: 148.5MHz

Panel Model: CY-MJ270BNLV1V Manufacturer: SDC

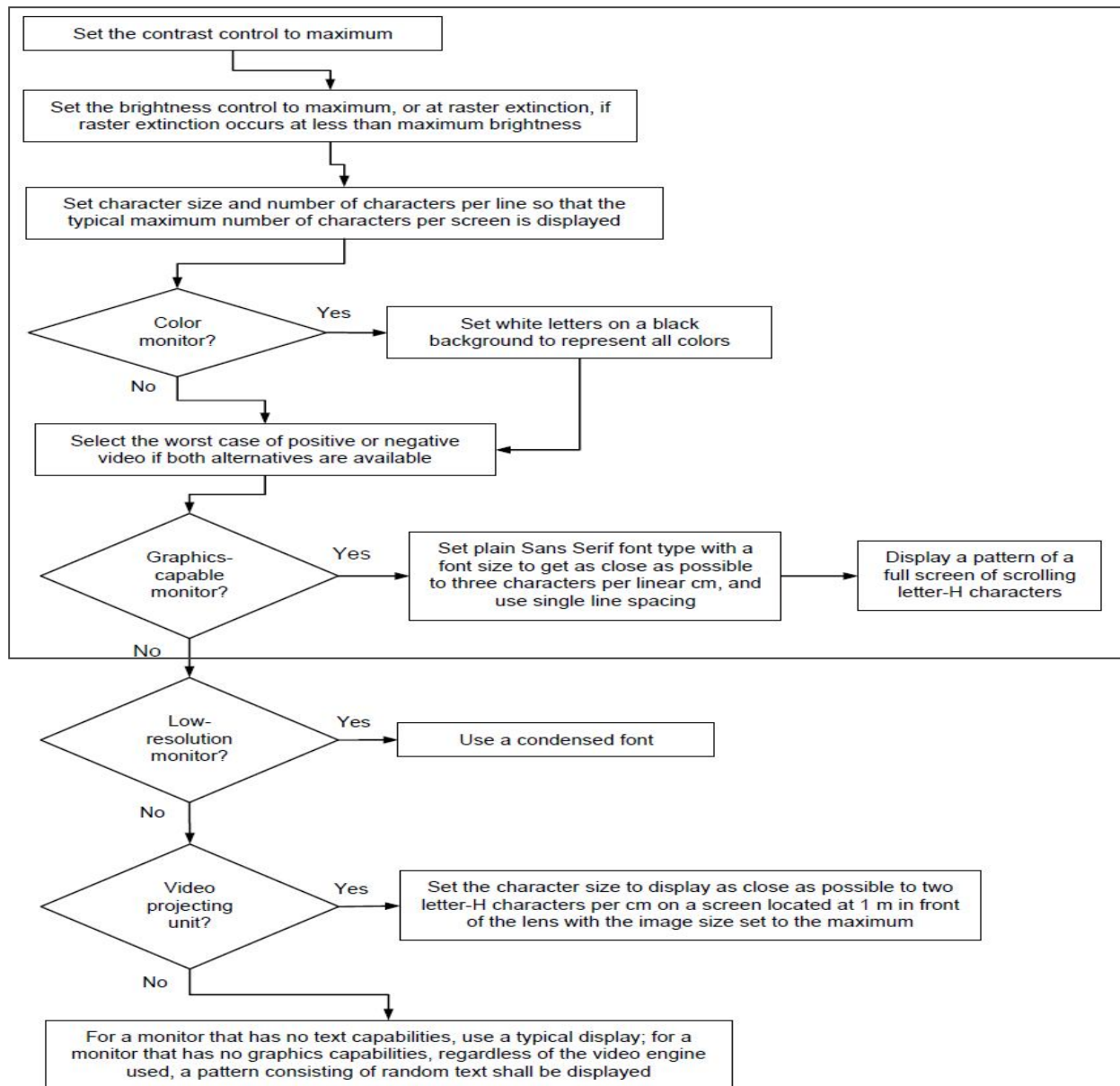
Model Name		S27E360F	S27E360H / S27E390H / S27E391H / S27E393H / S27E395H PLUS
Panel	Size	27 CLASS 27 Inches (68 cm)	
	Display area	597.9 mm (H) x 336.3 mm (V) 23.5 Inches (H) x 13.2 Inches (V)	
	Pixel Pitch	0.3114 mm (H) x 0.3114 mm (V) 0.01226 Inches (H) x 0.01226 Inches (V)	
Power Supply		AC 100 - 240 V~ (+/- 10 %), 50/60 Hz ± 3 Hz Refer to the label at the back of the product as the standard voltage can vary in different countries.	
Dimensions (WxHxD) / Weight	Without Stand	626.0 x 377.2 x 70.8 mm / 4.58 kg 24.6 x 14.9 x 2.8 Inches / 10.1 lbs	
	With Stand	626.0 x 452.9 x 181.9 mm / 5.14 kg 24.6 x 17.8 x 7.2 Inches / 11.3 lbs	
VESA Mounting Interface		75 mm x 75 mm 3.0 Inches x 3.0 Inches (For use with Specialty(Arm) Mounting hardware.)	
Environmental considerations	Operating	Temperature : 50 °F – 104 °F (10 °C – 40 °C) Humidity : 10 % – 80 %, non-condensing	
	Storage	Temperature : -4 °F – 113 °F (-20 °C – 45 °C) Humidity : 5 % – 95 %, non-condensing	

Test Voltage: 110 V, 60 Hz

4.6 Description of the EUT exercising method

The EUT exercise program used during EMI testing was CSQAL standardized test program for MS Windows. The program repetitively sends a screen of H – Character to the display. Connect video output of computer on EUT's PC IN (D-sub), HDMI port and scrolled H – character continuously on EUT's screen.

The EUT system includes a monitor, the operational conditions shown as follows, within the selected area.



- Notes:**
1. Set the brightness control to maximum
 2. Set the contrast control to maximum
 3. Display a pattern of a full screen of scrolling letter-H characters with a font size to get as close as possible to three characters per linear cm and use single line spacing

4.7 Measurement uncertainty

Where relevant, the following measurement uncertainty levels have been estimated for tests performed on the apparatus: (According to CISPR 16-4 and UKAS Lab 34.)

Test type			Measurement uncertainty (C.L. 95 %, k = 2)
Disturbance voltage at the mains terminals			3.0 dB
Radiated Disturbance	Horizontal	30 MHz - 1 GHz	5.0 dB
	Vertical	30 MHz - 1 GHz	5.0 dB
	Horizontal	1GHz - 6 GHz	3.7 dB
	Vertical	1GHz - 6 GHz	3.7 dB

4. Results of individual test

4.1 Conducted disturbance

Both conducted lines are measured in Quasi-Peak and Average mode, including the worst-case data points for each tested configuration.

The EUT measured in accordance with the methods described in standards.

Limits for conducted disturbance at the mains ports of class B ITE

Frequency range Limits MHz	Limits dB(μ V)	
	Quasi-peak	Average
0,15 to 0,50	66 to 56	56 to 46
0,50 to 5	56	46
5 to 30	60	50

Note 1: 1 μ V is regarded as 0 dB.
 Note 2: The limits shall decrease linearly with the logarithm of the frequency in the range 150 – 500 kHz.
 Note 3: If the average limit is met in the measurement with quasi-peak detector, the measurement with average detector is unnecessary.
 Note 4: The lower limit shall apply at the transition frequency.

If the reading on the measuring receiver shows fluctuations close to the limit, the reading shall be observed for at least 15 seconds at each measurement frequency, the highest reading shall be recorded, with the exception of any brief isolated high reading (which shall be ignored).

4.1.1 Test instrumentation

Test instrumentation used in the Conducted disturbance test was as follows:

Test instrumentation	Model name	Manufacturer	Serial or Firmware (No./Ver.)	Calibration	
				Date	Interval (Month)
Test Software	EP5CE	TOYO	V 5.4.40	N/A	N/A
Measuring receiver	ESCI	R&S	101027	2016.03.02	12
Artificial mains network	ENV216	R&S	101815	2015.08.03	12
Artificial mains network	ENV216	R&S	101122	2015.08.03	12

4.1.2 Photograph of the test Configuration

(Front)



(Rear)



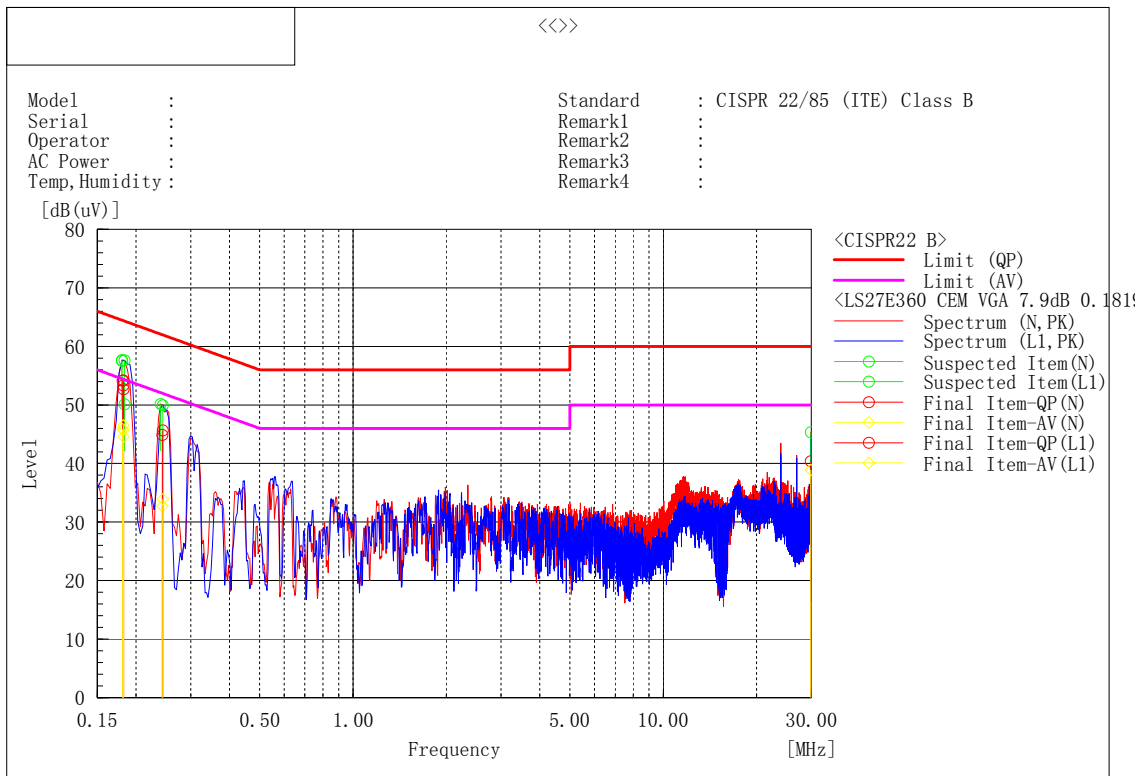
4.1.3 Test results

Test date	2016.04.26		Test engineer		Jie Yang	
Climate condition	Ambient temperature	21±1 °C	Relative humidity	21±1 %	Atmospheric pressure	102±0 kPa
		Test place Shielded Room #2				

4.1.4 Test data

■ **Operating Mode: D-Sub (PC Video IN or Analog) IN Display**

Set the brightness control to maximum, Set the contrast control to maximum
 Scan three resolutions (800*600@60Hz, 1024*768@60Hz, 1920*1080@60Hz), then choose the worst one (1920*1080@60Hz) for final evaluation.



Final Result

--- N Phase ---

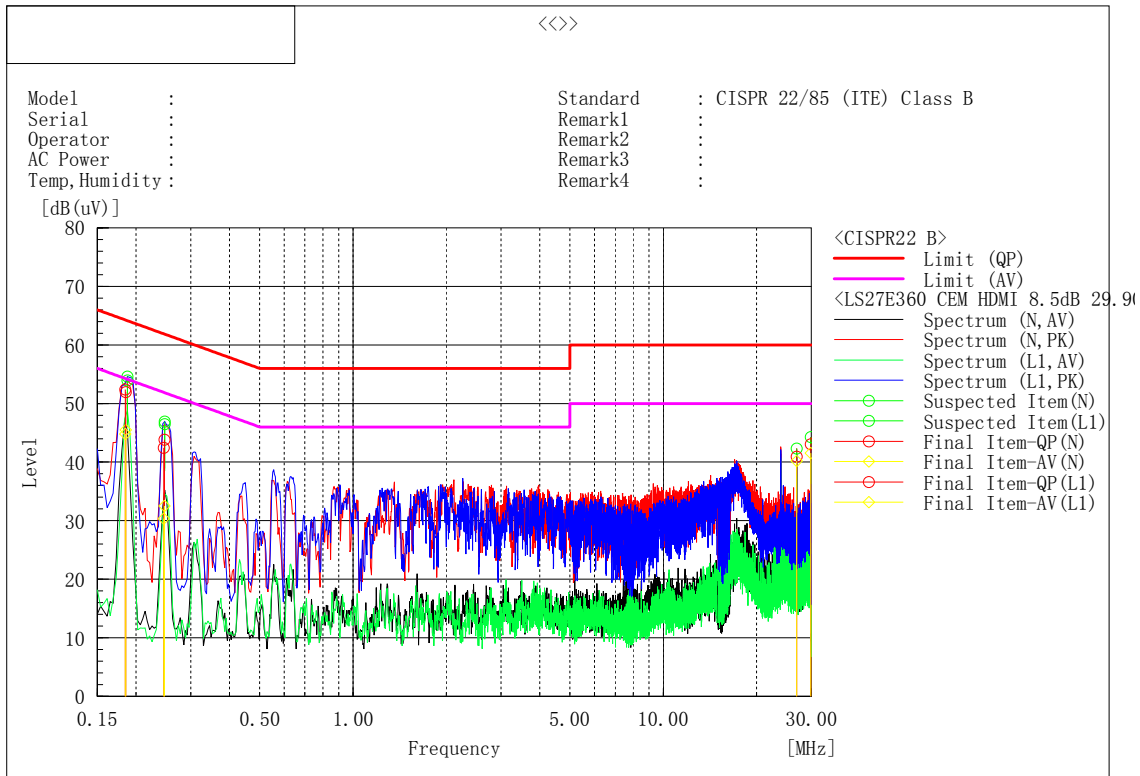
No.	Frequency [MHz]	Reading QP [dB(uV)]	Reading CAV [dB(uV)]	c. f [dB]	Result QP [dB(uV)]	Result CAV [dB(uV)]	Limit QP [dB(uV)]	Limit AV [dB(uV)]	Margin QP [dB]	Margin CAV [dB]
1	0.182	43.3	35.7	10.0	53.3	45.7	64.4	54.4	11.1	8.7
2	0.2431	35.0	22.8	9.9	44.9	32.7	62.0	52.0	17.1	19.3
3	0.18222	42.7	34.5	10.0	52.7	44.5	64.4	54.4	11.7	9.9
4	29.9076	30.1	28.6	10.3	40.4	38.9	60.0	50.0	19.6	11.1

--- L1 Phase ---

No.	Frequency [MHz]	Reading QP [dB(uV)]	Reading CAV [dB(uV)]	c. f [dB]	Result QP [dB(uV)]	Result CAV [dB(uV)]	Limit QP [dB(uV)]	Limit AV [dB(uV)]	Margin QP [dB]	Margin CAV [dB]
1	0.18108	44.1	35.8	10.0	54.1	45.8	64.4	54.4	10.3	8.6
2	0.18196	44.2	36.5	10.0	54.2	46.5	64.4	54.4	10.2	7.9
3	0.24404	35.6	23.9	10.0	45.6	33.9	62.0	52.0	16.4	18.1

Operating Mode: HDMI IN Display

Set the brightness control to maximum, Set the contrast control to maximum
 Scan three resolutions (800*600@60Hz, 1024*768@60Hz, 1920*1080@60Hz), then choose the worst one (1920*1080@60Hz) for final evaluation.



Final Result

--- N Phase ---

No.	Frequency [MHz]	Reading QP [dB(uV)]	Reading CAV [dB(uV)]	c. f [dB]	Result QP [dB(uV)]	Result CAV [dB(uV)]	Limit QP [dB(uV)]	Limit AV [dB(uV)]	Margin QP [dB]	Margin CAV [dB]
1	0.18522	41.9	35.5	10.0	51.9	45.5	64.2	54.2	12.3	8.7
2	0.2454	32.5	20.4	9.9	42.4	30.3	61.9	51.9	19.5	21.6
3	29.9094	32.8	31.2	10.3	43.1	41.5	60.0	50.0	16.9	8.5
4	26.91768	30.6	29.9	10.3	40.9	40.2	60.0	50.0	19.1	9.8

--- L1 Phase ---

No.	Frequency [MHz]	Reading QP [dB(uV)]	Reading CAV [dB(uV)]	c. f [dB]	Result QP [dB(uV)]	Result CAV [dB(uV)]	Limit QP [dB(uV)]	Limit AV [dB(uV)]	Margin QP [dB]	Margin CAV [dB]
1	0.18448	42.4	34.8	10.0	52.4	44.8	64.3	54.3	11.9	9.5
2	0.24674	33.8	22.5	10.0	43.8	32.5	61.9	51.9	18.1	19.4

Note) Level (Quasi-Peak and/or Average) = Meter Reading (Quasi-Peak and/or Average) + Factor (LISN Insertion Loss + Cable Loss)

Margin = Limit – Level (Quasi-Peak and/or Average)

4.2 Radiated disturbance

Of those disturbances above ($L - 20\text{dB}$), where L is the limit level in logarithmic units, record at least the disturbance levels and the frequencies of the six highest disturbances.

The following data lists the significant emission frequencies, measured levels, correction factors (for antenna and cables), orientation of table, polarization and height of antenna, the corrected reading, the limit, and the amount of margin. All measurements were taken utilizing quasi-peak detection unless stated otherwise.

Measurements were performed at an antenna to EUT distance of 3 meters and elevated between 1 and 4 meters. Both vertical and horizontal antenna polarizations were measured.

Above 1GHz, peak detector function mode was used with resolution bandwidth of 1 MHz and a video bandwidth of 1 MHz. If the peak measured value complies with the average limit, it is unnecessary to perform an average measurement.

Except for Class A digital devices, the field strength of radiated emissions from unintentional radiators at a distance of 3 meters shall not exceed the following values:

Frequency range Limits MHz	Quasi-peak Limits (microvolts/meter)
	Class B
30 to 88	100
88 to 216	150
216 to 960	200
Above 960	500

Note 1: The lower limit shall apply at the transition frequency.
 Note 2: Additional provisions may be required for cases where interference occurs.
 Note 3: 1 $\mu\text{V}/\text{m}$ is regarded as 0 dB.

Measurements above 1GHz were performed at an antenna to EUT distance of 3 meters and elevated 1 to 4 meters in FAC. Both vertical and horizontal antenna polarizations were measured.

The test is performed in a semi-anechoic chamber, use of absorbing material to cover part of the metal ground plane, the dimension of the absorbing material is: 3 x 3 x 0.3 m (W x D x H)

Limits for radiated disturbance of ITE at a measuring distance of 3 m

Frequency range Limits MHz	Class A		Class B	
	Peak dB($\mu\text{V}/\text{m}$)	Average dB($\mu\text{V}/\text{m}$)	Peak dB($\mu\text{V}/\text{m}$)	Average dB($\mu\text{V}/\text{m}$)
1000 to 3000	76	56	70	50
3000 to 6000	80	60	74	54

Note 1: The lower limit shall apply at the transition frequency.

4.2.1 Test instrumentation

Test instrumentation used in the Radiated disturbance was as follows:

30MHz~1GHz

Test instrumentation	Model name	Manufacturer	Serial or Firmware (No./Ver.)	Calibration	
				Date	Interval (Month)
Test Software	EP5/RE	TOYO	V 5.7.10	N/A	N/A
Bi-con Antenna	CBL6112D	TESEQ	29069	2015.03.16	24
EMI Receiver	ESCI	R&S	101026	2016.03.02	12
AMPLIFIER	310N	SONOMA	300911	2015.07.05	12
Ant Mast	MA4000	INN CO	-	N/A	N/A
Mast Controller	CO2000	INN CO	-	N/A	N/A
RF Selector	NS4900N	TOYO	-	N/A	N/A

Above 1GHz

Test instrumentation	Model name	Manufacturer	Serial or Firmware (No./Ver.)	Calibration	
				Date	Interval (Month)
Test Software	EP5/RE	TOYO	V 5.7.10	N/A	N/A
Broad-Band Horn Antenna	BBHA9120B	Schwarzbeck	521	2014.04.16	24
EMI Receiver	ESU26	R&S	100244	2016.03.02	12
AMPLIFIER	TPA0108-40	TOYO	1409	2016.03.02	12
Ant Mast	AUDIX	AUDIX	-	N/A	N/A

4.2.2 Photograph of the test Configuration

30MHz~1GHz
(Front)



(Rear)



**Above 1GHz
(Front)**



(Rear)



4.2.3 Test results

30MHz~1GHz

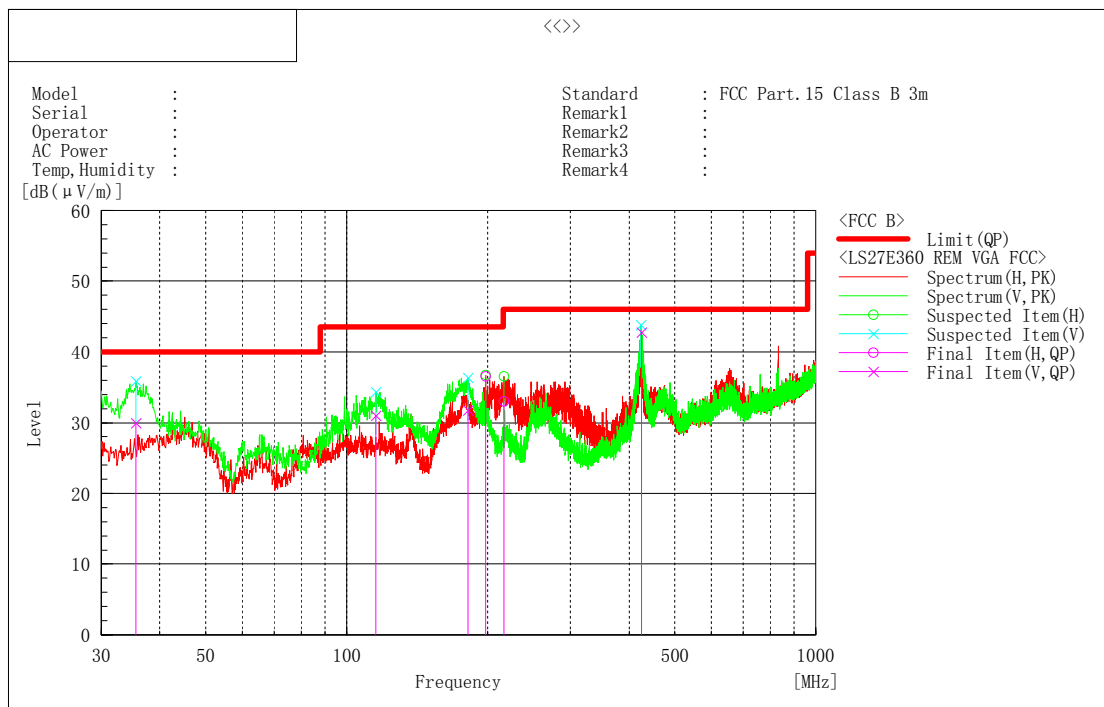
Test date	2016.04.26		Test engineer		Jie Yang	
Climate condition	Ambient temperature	21±1 °C	Relative humidity	21±1 %	Atmospheric pressure	102±0 kPa
	Test place					
3m Semi-Anechoic Chamber						

■ Operating Mode: D-Sub (PC Video IN or Analog) IN Display

Set the brightness control to maximum

Set the contrast control to maximum

Scan three resolutions (800*600@60Hz, 1024*768@60Hz, 1920*1080@60Hz), then choose the worst one (1920*1080@60Hz) for final evaluation.



Final Result

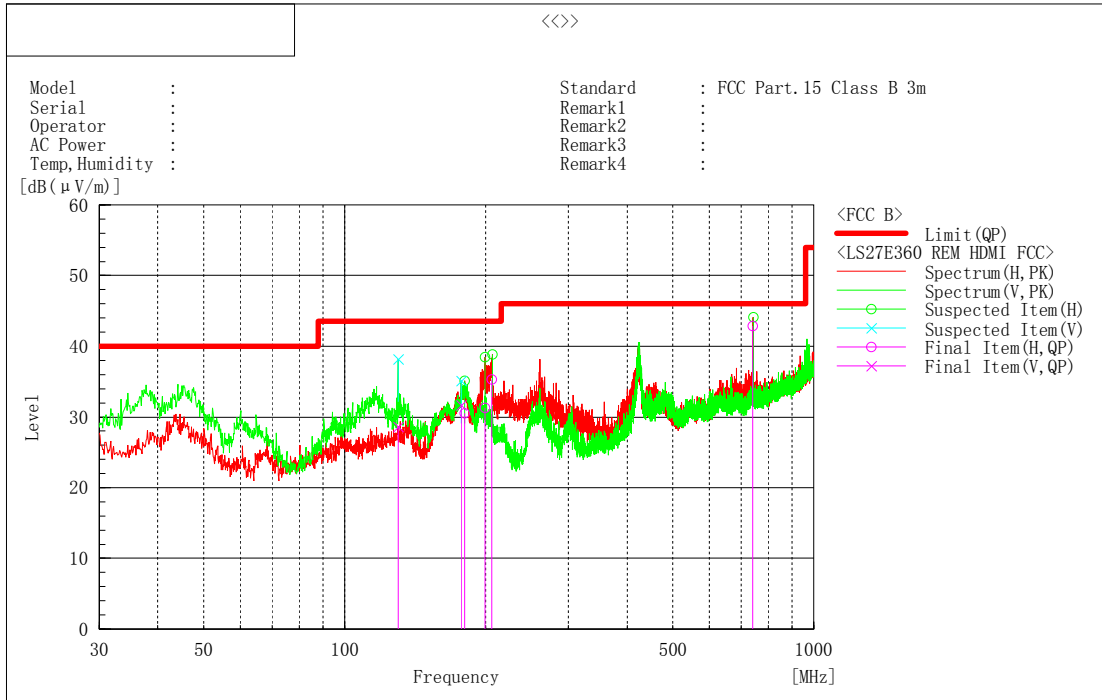
No.	Frequency [MHz]	(P)	Reading QP [dB(μV)]	c. f [dB(1/m)]	Result QP [dB(μV/m)]	Limit QP [dB(μV/m)]	Margin QP [dB]	Height [cm]	Angle [°]
1	425.182	V	46.5	-3.8	42.7	46.0	3.3	109.0	175.5
2	197.980	H	49.4	-12.9	36.5	43.5	7.0	168.0	205.7
3	216.728	H	45.6	-12.6	33.0	46.0	13.0	132.0	194.5
4	181.441	V	44.9	-13.1	31.8	43.5	11.7	158.0	38.9
5	35.578	V	38.5	-8.5	30.0	40.0	10.0	243.0	46.0
6	115.602	V	41.8	-10.8	31.0	43.5	12.5	137.0	354.4

■ Operating Mode: HDMI IN Display

Set the brightness control to maximum

Set the contrast control to maximum

Scan three resolutions (800*600@60Hz, 1024*768@60Hz, 1920*1080@60Hz), then choose the worst one (1920*1080@60Hz) for final evaluation.



Final Result

No.	Frequency [MHz]	(P)	Reading QP [dB(μV)]	c. f [dB(1/m)]	Result QP [dB(μV/m)]	Limit QP [dB(μV/m)]	Margin QP [dB]	Height [cm]	Angle [°]
1	205.839	H	48.1	-12.8	35.3	43.5	8.2	142.0	191.6
2	130.152	V	39.3	-10.7	28.6	43.5	14.9	101.0	353.6
3	742.466	H	41.7	1.2	42.9	46.0	3.1	109.0	136.5
4	177.076	V	44.6	-12.9	31.7	43.5	11.8	156.0	44.9
5	180.108	H	43.6	-13.0	30.6	43.5	12.9	202.0	35.6
6	199.508	H	44.1	-12.8	31.3	43.5	12.2	189.0	193.0

Note) Receiving antenna polarization : Horizontal and/or Vertical

Test Distance : 3m, Antenna Height : 1 to 4 meters

Result (Quasi-Peak) = Reading QP + C.F (Antenna Factor + Cable Loss - Amp. Gain)

Margin QP (Quasi-Peak) = Limit – Level QP

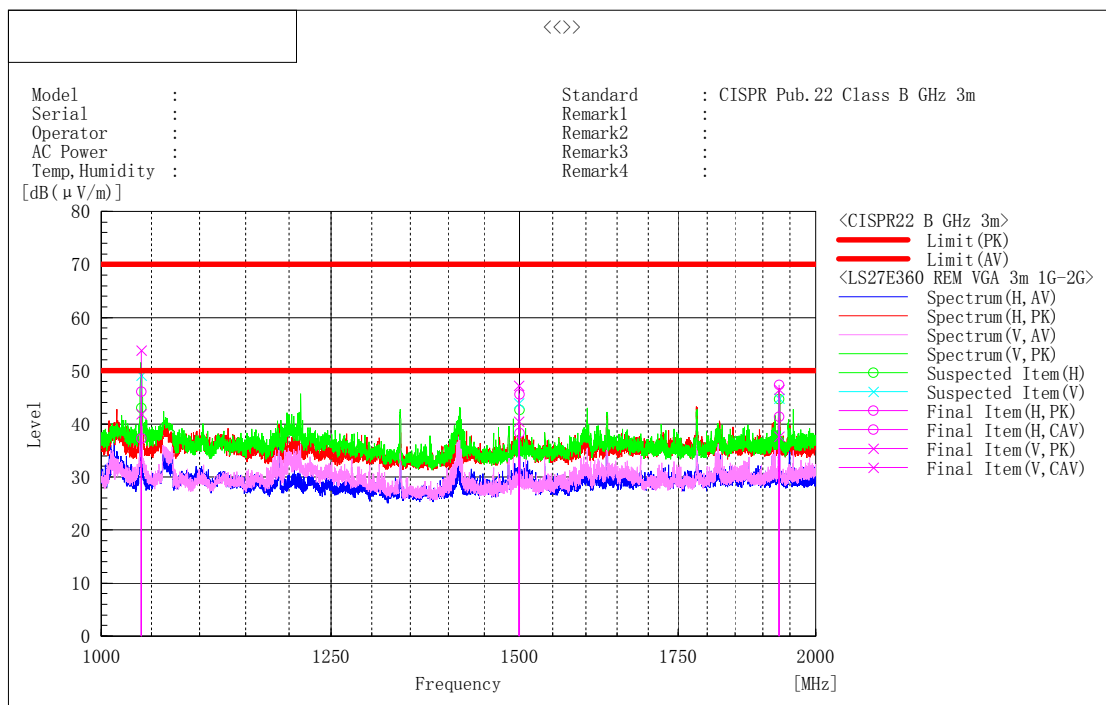
Above 1GHz

Test date	2016.04.26		Test engineer		Jie Yang	
Climate condition	Ambient temperature	22±1 °C	Relative humidity	23±1 %	Atmospheric pressure	102±0 kPa
	Test place					
3m Semi-Anechoic Chamber						

■ **Operating Mode: D-Sub (PC Video IN or Analog) IN Display**

Set the brightness control to maximum, set the contrast control to maximum

Scan three resolutions (800*600@60Hz, 1024*768@60Hz, 1920*1080@60Hz), then choose the worst one (1920*1080@60Hz) for final evaluation.

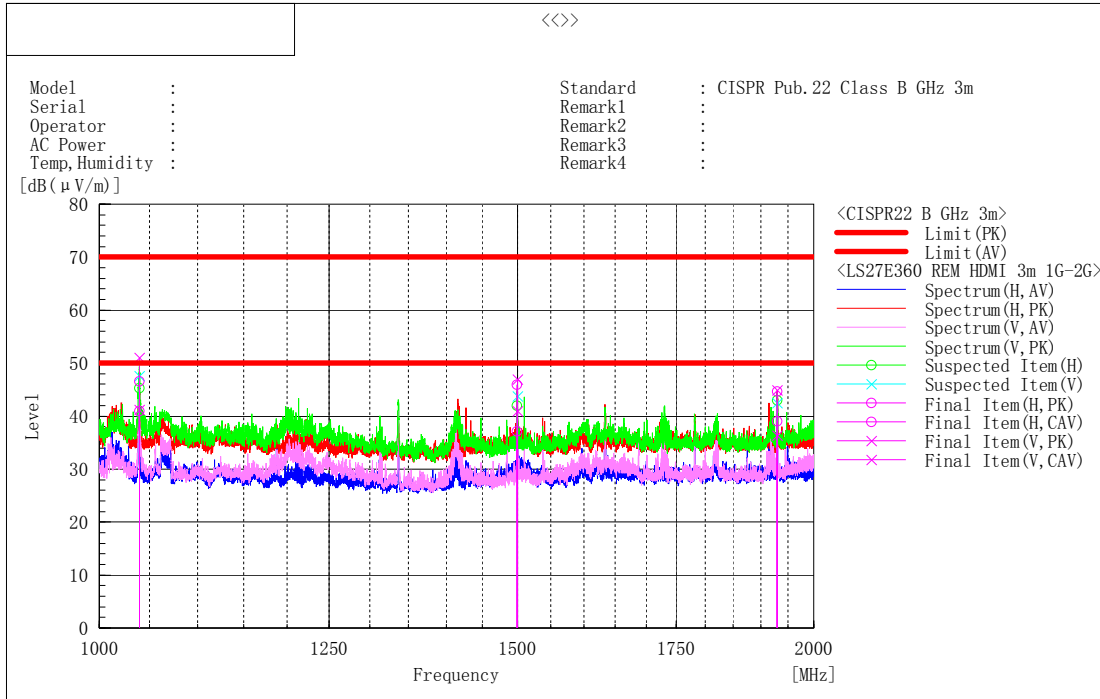


Final Result

No.	Frequency [MHz]	(P)	Reading PK [dB(µV)]	Reading CAV [dB(µV)]	c. f [dB(1/m)]	Result PK [dB(µV/m)]	Result CAV [dB(µV/m)]	Limit PK [dB(µV/m)]	Limit AV [dB(µV/m)]	Margin PK [dB]	Margin CAV [dB]	Height [cm]	Angle [°]
1	1039.450	V	73.0	61.1	-19.2	53.8	41.9	70.0	50.0	16.2	8.1	141.0	354.8
2	1930.500	V	64.6	55.8	-18.2	46.4	37.6	70.0	50.0	23.6	12.4	302.0	348.7
3	1930.625	H	65.6	59.6	-18.2	47.4	41.4	70.0	50.0	22.6	8.6	157.0	336.8
4	1499.875	V	66.2	59.4	-19.0	47.2	40.4	70.0	50.0	22.8	9.6	246.0	169.7
5	1039.375	H	65.2	56.4	-19.2	46.0	37.2	70.0	50.0	24.0	12.8	236.0	309.6
6	1500.000	H	64.6	57.3	-19.0	45.6	38.3	70.0	50.0	24.4	11.7	179.0	110.6

■ Operating Mode: HDMI IN Display

Set the brightness control to maximum, set the contrast control to maximum
 Scan three resolutions (800*600@60Hz, 1024*768@60Hz, 1920*1080@60Hz), then choose the worst one (1920*1080@60Hz) for final evaluation.



Final Result

No.	Frequency [MHz]	(P)	Reading PK [dB(μV)]	Reading CAV [dB(μV)]	c. f [dB(1/m)]	Result PK [dB(μV/m)]	Result CAV [dB(μV/m)]	Limit PK [dB(μV/m)]	Limit AV [dB(μV/m)]	Margin PK [dB]	Margin CAV [dB]	Height [cm]	Angle [°]
1	1039.473	V	70.3	60.4	-19.2	51.1	41.2	70.0	50.0	18.9	8.8	143.0	348.0
2	1039.500	H	65.8	60.2	-19.2	46.6	41.0	70.0	50.0	23.4	9.0	167.0	350.9
3	1500.000	V	65.9	59.9	-19.0	46.9	40.9	70.0	50.0	23.1	9.1	248.0	165.6
4	1930.625	H	62.8	57.3	-18.2	44.6	39.1	70.0	50.0	25.4	10.9	186.0	34.1
5	1930.500	V	63.1	54.6	-18.2	44.9	36.4	70.0	50.0	25.1	13.6	248.0	39.1
6	1499.750	H	64.9	56.1	-19.0	45.9	37.1	70.0	50.0	24.1	12.9	348.0	43.6

Note1) (P) : Abbreviation of Antenna Polarity

Note2) Reading PK / C/AV : Received raw Peak / C/Average signal

Note3) Factor = Antenna factor + Cable loss – Amplifier gain

Note4) Level PK / C/AV = Reading PK / C/AV + Factor, Real signal Peak / C/Average level

Note5) Margin PK / C/AV = Limit – Level PK / C/AV

PK : Abbreviation of Peak

C/AV : Abbreviation of CISPR Average

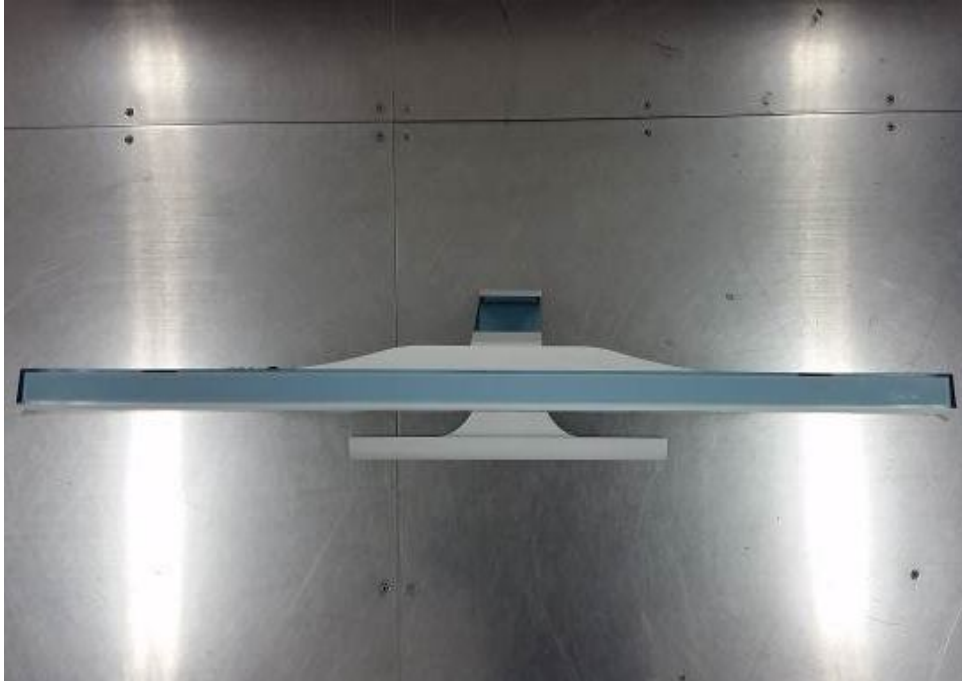
Appendix A – EUT photography
(Front)



(Rear)



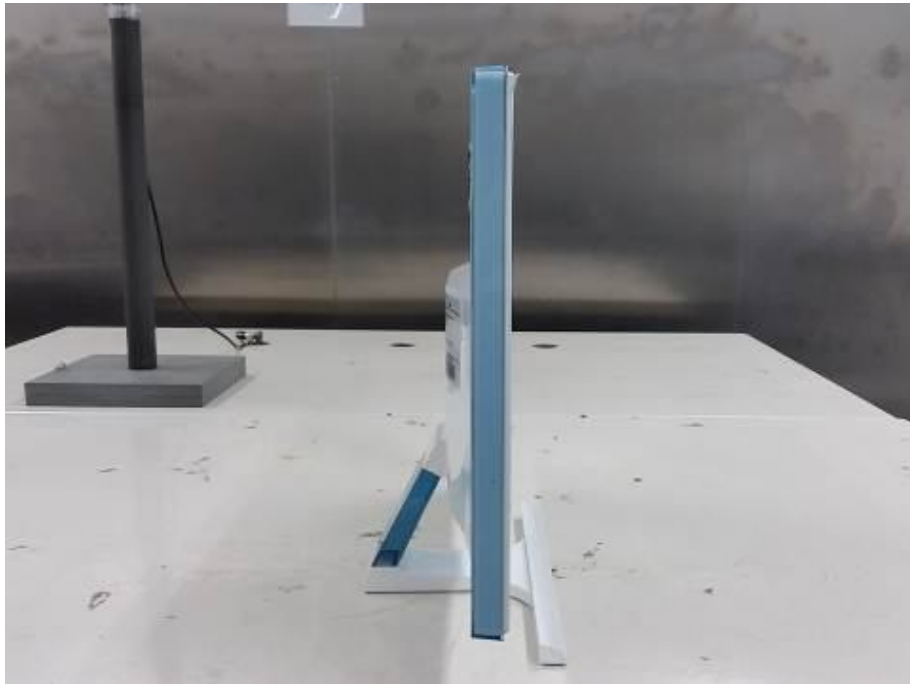
(Up)



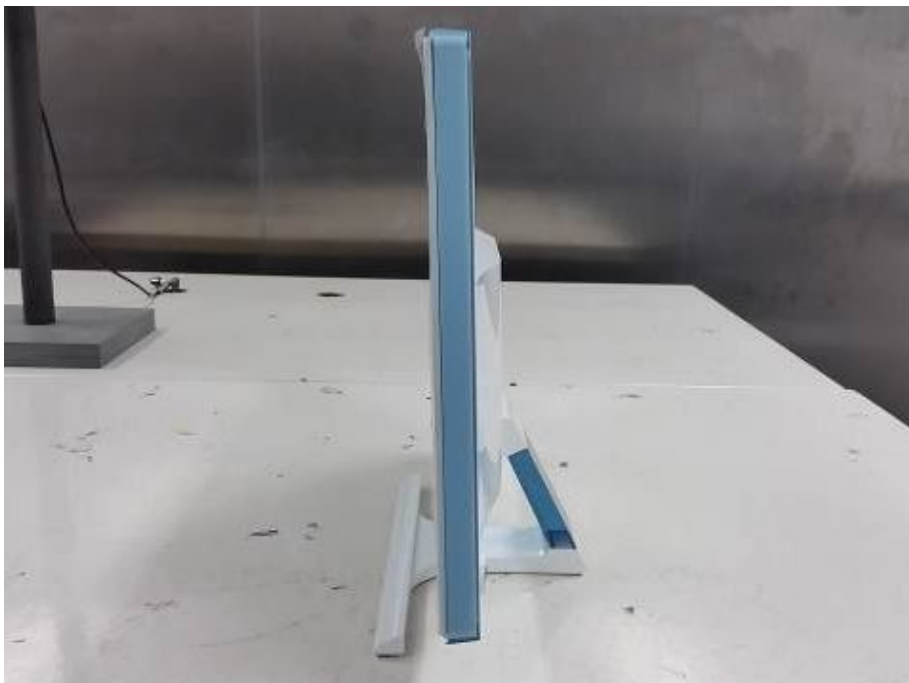
(Down)



(Left)



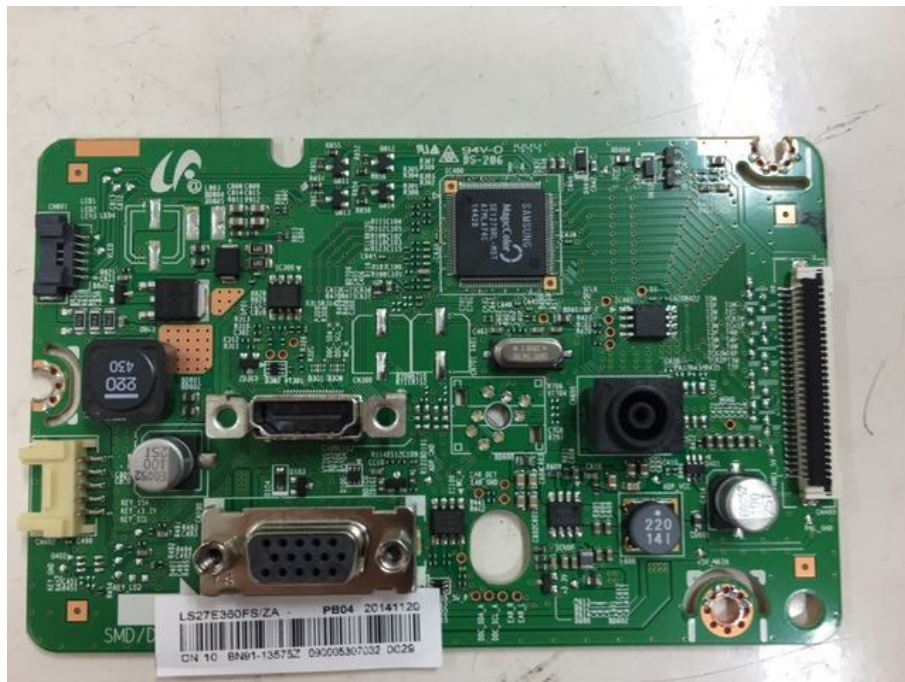
(Right)



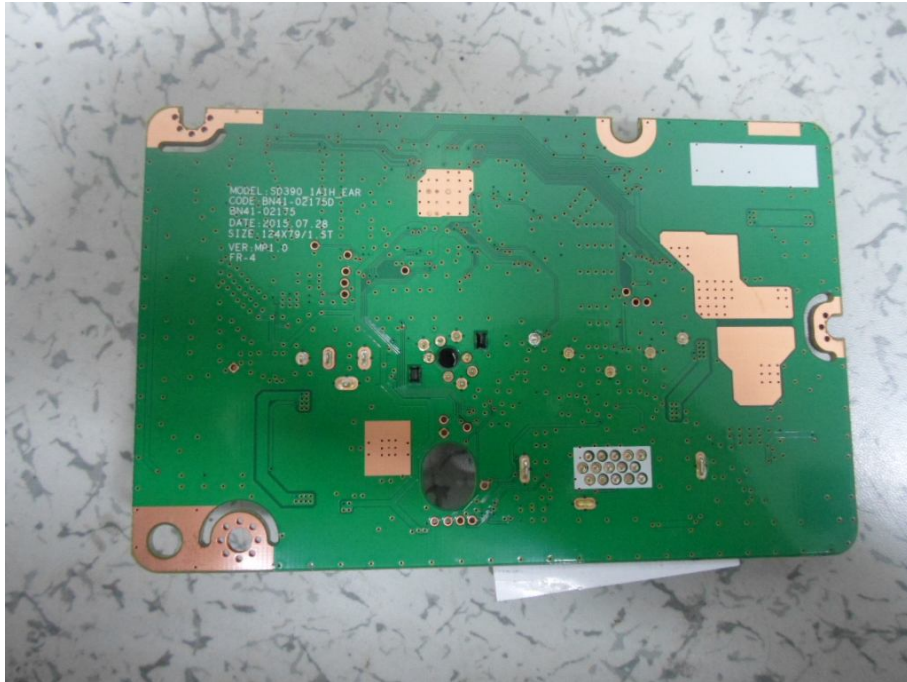
(Panel)



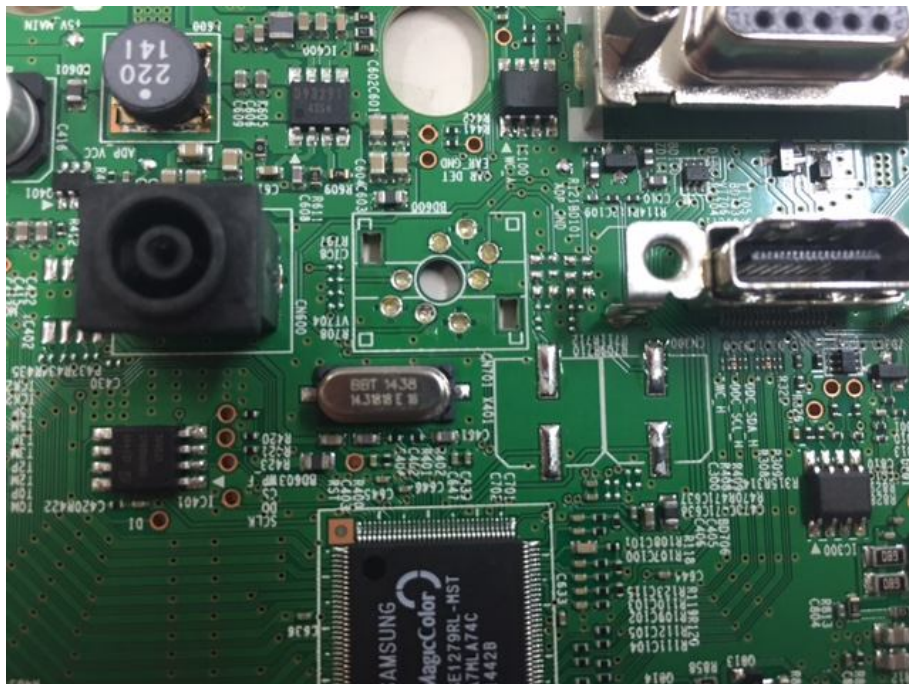
(Main Board)



(MAIN Board)



(Crystal Main Board)



(Power Board)



(Power Board)

