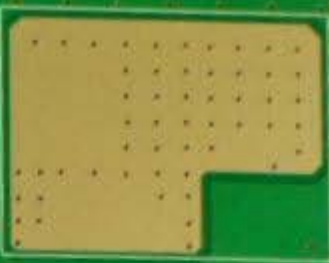




FTM\_T TBP\_T T4M\_T TOKIM\_T T3M\_T  
TTP\_T T2M\_T T4P\_T T2LP\_T VIP\_T  
TOK2M\_T T5M\_T T3M\_T T2M\_T T4M\_T  
TOK2P\_T T5P\_T T3P\_T T2P\_T T4P\_T

T\_PANEL\_5V

MODEL: SC300 1A1H  
CODE: BN41-0T962A  
CODE: BN41-0196Z  
DATE: 2013.01.02  
REV NO: 1.0  
SIZE: 119\*95/1.6T  
CEM-3 PTH



94V-0  
DS-286  
1302 A-4

+5V\_MAIN\_T

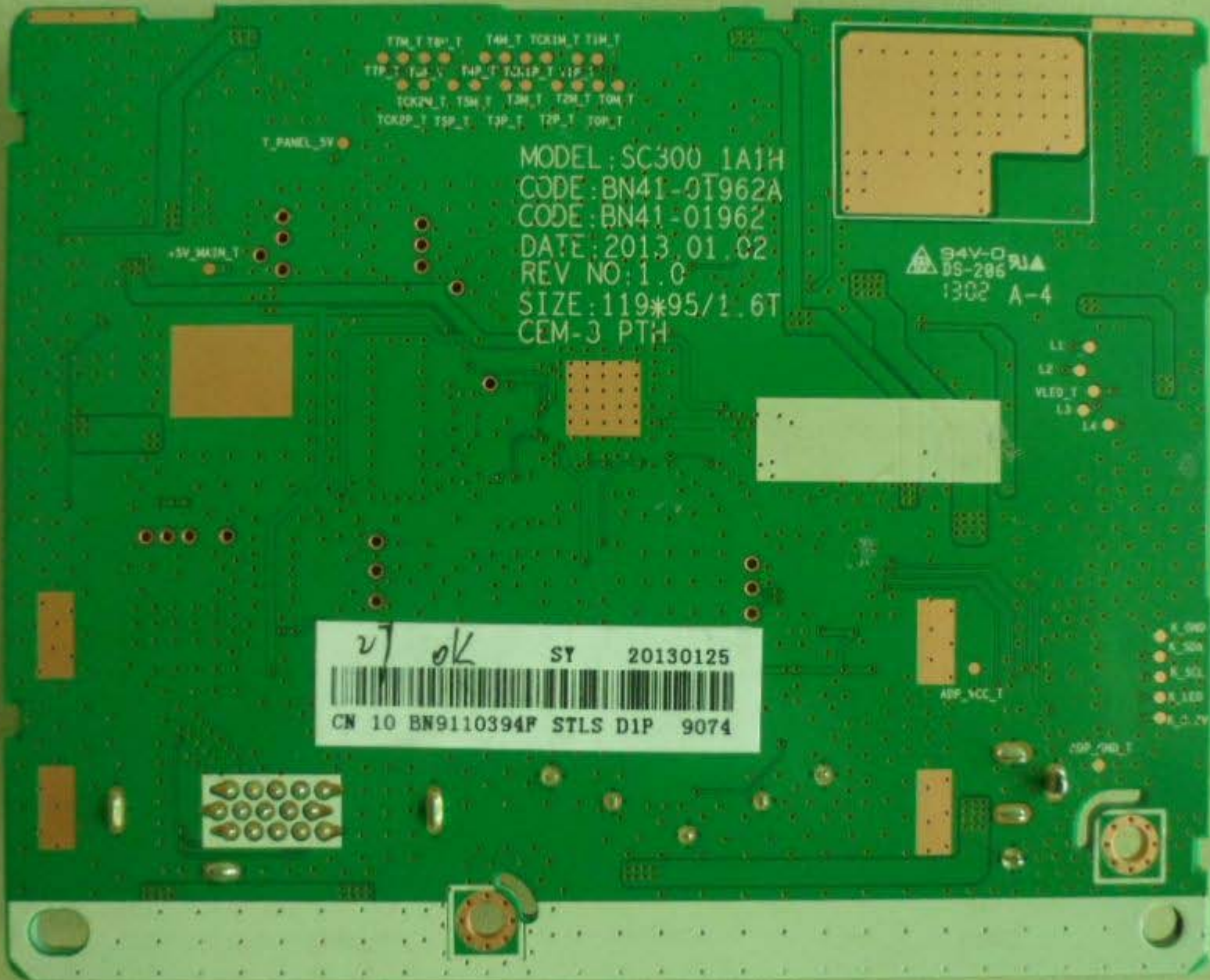
L1  
L2  
VLED\_T  
L3  
L4

27 ok ST 20130125  
CN 10 BN9110394F STLS D1P 9074

ADP\_VCC\_T

R\_50P  
R\_50M  
R\_50L  
R\_LED  
R\_C\_2V

ADP\_5V0\_T



110131NDC WK  
WKB-001121108 CN

330n K 275V-  
436D MKP X2

75A 250V  
4358 MKP  
X2

FP801  
250V

NT8015  
Hansol

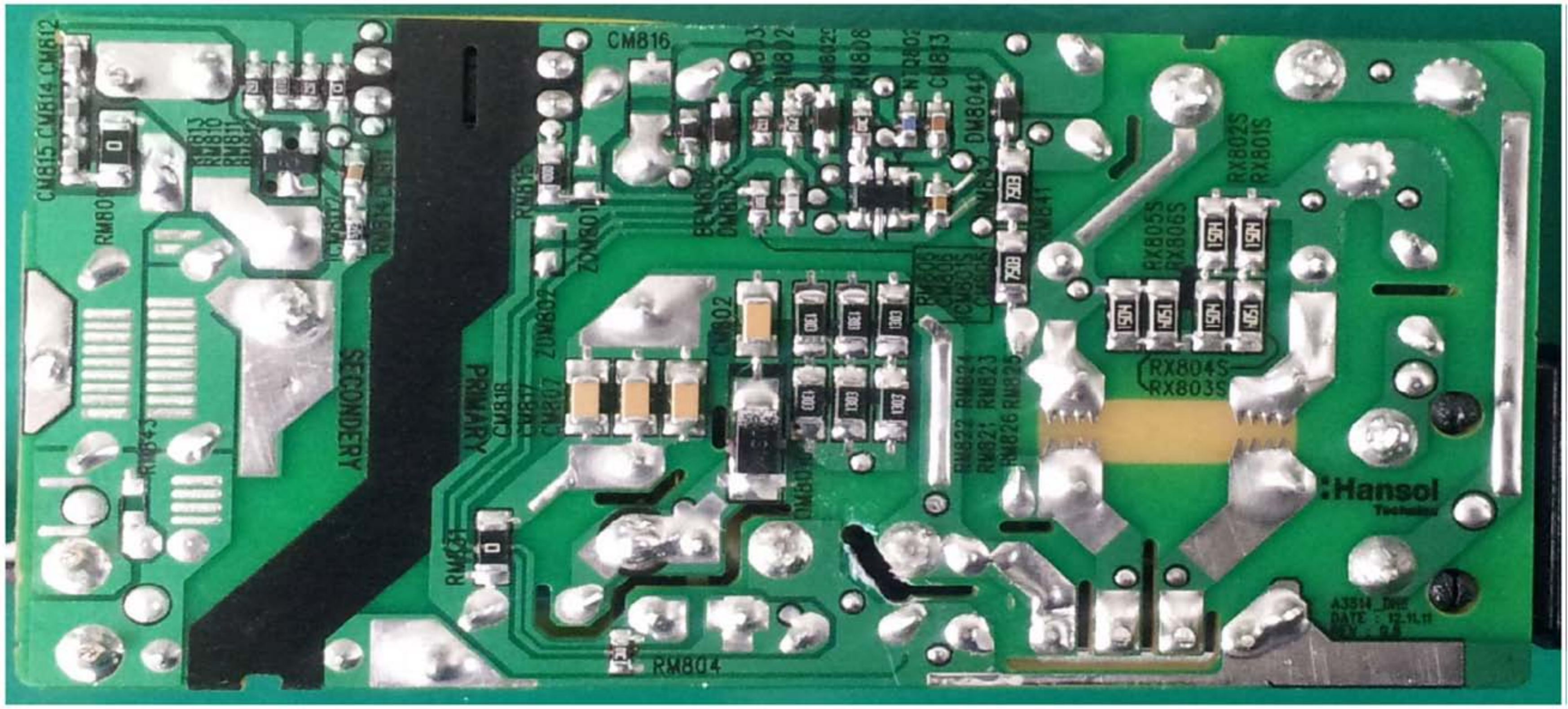
VX801

207  
Voltage

185  
05

5715  
DIP

PC8015



CM815 CM814 CM812  
RM800  
RM813  
RM810  
RM811

SECONDARY

PRIMARY

CM816  
RM803  
RM802  
DM802C  
RM808  
NTQ802  
CM813  
DM804D  
RM804

ZOM801  
CM802  
1001  
1001  
1303  
1303  
1303  
1303

RX805S  
RX806S  
RX804S  
RX803S  
RX802S  
RX801S

Hansol  
Technology

A35H\_DWE  
DATE: 12-11-11  
REV: 04

RM804