

## Request for class II permissive change

FCC ID:A3LLS24E360

Date:2016/6/14

TO: Federal Communication Commission

Please be notified that we, the undersigned, **Samsung Electronics Co., Ltd.** declare that the reasons for this Class II permissive change are as bellow:

1:Change to use new adaptor and new panel

Please refer to the below form for detailed information:

Item	Change information		Remark
	Before	After	
<b>Adaptor</b>	A2514_FPN	A2514_KSM	Change adaptor from the basic model
<b>panel</b>	MJ236BNLV1	CY-MJ236BNEV1	Change panel from the basic model

Only the adaptor and panel are different, other components are same.

Thank you!



Peter Ra, Manager  
Samsung Electronics Co., Ltd.

## The photos



Before change  
MJ236BNLV1 front view



Before change  
MJ236BNLV1 rear view



Before change  
MJ236BNLV1 rear view



Back change  
CY-MJ236BNEV1 front view



Back change  
CY-MJ236BNEV1 rear view



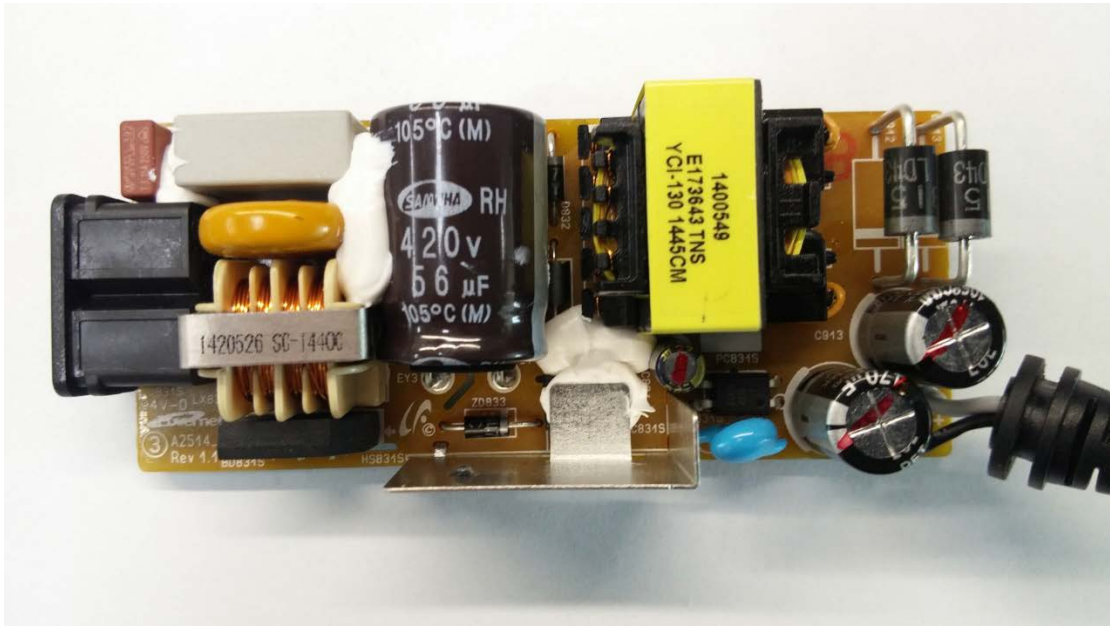
Back change  
CY-MJ236BNEV1 rear view



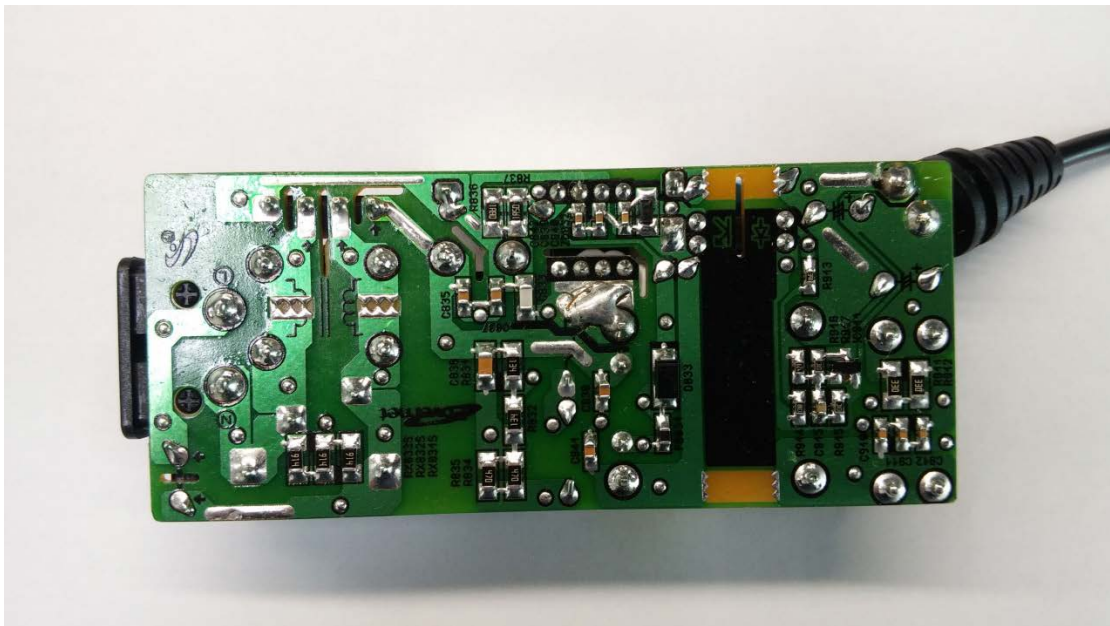
Before change  
A2514\_FPN external rear view



Before change  
A2514\_FPN internal front view



Before change  
A2514\_FPN internal rear view



Before change  
A2514\_FPN external front view



Back change  
A2514\_KSM external front view



Back change  
A2514\_KSM external rear view



Back change  
A2514\_KSM internal front view



Back change  
A2514\_KSM internal rear view