

EMC TEST REPORT

Project No.	LBE20125612	Revision No.	NONE
FCC ID	A3LLS24C65		
Applicant	Name of organization	Samsung Electronics Co., Ltd.	
	Address	18600 Broad wick St. Rancho Dominguez CA 90220	
	Date of application	November 28, 2012	
EUT Equipment Under Test	Type of device	Class B personal computers and peripherals	
	Equipment authorization	<input type="checkbox"/> Declaration of Conformity <input checked="" type="checkbox"/> Certification <input type="checkbox"/> Verification	
	Kind of product	LCD MONITOR	
	Model No.	LS24C65* <small>(The character "*" may be 0-9,A-Z or blank ,it means different color)</small>	
		Variant Model No.	None
	Manufacturer	Tianjin Samsung Electronics Co., LTD. Weisi Rd. Micro-Electronic Industrial Park, Jingang Rd. Xiqing Dist, Tianjin, 300385 China	
Applied Standards		FCC Part 15, Subpart B class B	
		ANSI C63.4-2009	
Test period		November 29, 2012~ December 04, 2012	
Issue date		December 07, 2012	

Test result : Complied

The equipment under test has found to be compliant with the applied standards.
 (Refer to the attached test result for more detail.)

Tested by : Zhongyuan Gao



Reviewed by : Xiao Li



The test results in this report only apply to the tested sample. This report must not be reproduced, except in full, without written permission from CSQAL



TSEC Wei 4 Road, Microelectronics Industrial Park, Jingang High way, Tianjin, China
 Tel: 86 22 23961234, Fax: 86 22 23961234-5214

According to Sec. 2.1077, 47 CFR of the FCC Rules.

This device complies with Part 15 of the FCC Rules. Operation is subject to the following two conditions: (1) This device may not cause harmful interference, and (2) This device must accept any interference received, including interference that may cause undesired operation.

Equipment EUT Type	Class B personal computers and peripherals
Kind of product	LCD Monitor
Trade Name	Samsung Electronics
Model	LS24C65* (The character "*" may be 0-9,A-Z or blank ,it means different color)
Applied Rules	FCC Part 15, Subpart B Class B
	ANSI C63.4-2009
Manufacturer	Tianjin Samsung Electronics Co., LTD. Weisi Rd. Micro-Electronic Industrial Park, Jingang Rd. Xiqing Dist, Tianjin,300385 China

We hereby *declare that* the equipment bearing the trade name and model number specified above was tested conforming to the applicable FCC Rules under the most accurate measurement standards possible, and that all the necessary steps have been taken and are in force to assure that production units of the same equipment will continue to comply with the Commission's requirements.


U.S. RESPONSIBLE PARTY	Samsung Electronics America QA Lab 18600 Broad wick St. Rancho Dominguez CA 90220
CONTACT PERSON	 <u>Mr. Peter Ra, Manager</u> E-Mail : raaaa@samsung.com Tel : 1-310-900-5250 Fax : 1-310-537-5500

Table of contents

1. Summary of test results

1.1 Emission

2. General Information

2.1 Test facility

3. Test configuration

3.1 Test Peripherals

3.2 EUT operating mode

3.3 Details of Sampling

3.4 Used cable description

3.5 EUT Description

3.6 Description of the EUT exercising method

3.7 Measurement uncertainty

4. Result of individual tests

4.1 Conducted disturbance

4.2 Radiated disturbance

Appendix – EUT photography

1. Summary of test results

The EUT has been tested according to the following specifications:

Applied	Test type	Applied standard	Result	Remarks
<input checked="" type="checkbox"/>	Conducted Disturbance	FCC Part 15 Subpart B	Complied	Meets Class B Limit
<input checked="" type="checkbox"/>	Radiated Disturbance	ANSI C63.4-2009	Complied	Meets Class B Limit

- Note : These results are deemed satisfactory evidence of compliance with ICES-003 of the Canadian Interference-Causing Equipment Regulations.

2. General Information

2.1 Test facility

The following firm has submitted the information required by Section 2.948 of the FCC Rules for measuring devices subject to Certification under Parts 15 & 18. The FCC takes no responsibility regarding the capability of this firm for performing the required measurements. Accordingly, this firm should not advertise or otherwise imply FCC approval of CSQAL.

CHINA SAMSUNG QUALITY ASSURANCE LABORATORY is LOCATED ON Block D, 17 - 19, Wei 4 Road, Microelectronics Industrial Park, Jingang Highway, Tianjin China.

Registration Number: 745769

E-mail Address: xiaoli@samsung.com

Phone Number: 86-22-2396-1234-5211

All testing are performed in Semi-anechoic chambers conforming to the site attenuation

Characteristics defined by ANSI C63.4, CISPR 22, 16-1 and 16-2 and Shielded rooms.

CSQAL is operated as testing laboratory in accordance with the requirements of ISO/IEC 17025:2005.

3. Test Setup configuration

3.1 Test Peripherals

The peripherals which were interconnected to the EUT during the test are as follows:

Item	Model No.	Serial No.	Manufacturer	Note
LCD Monitor	LS24C65U	-	Samsung	EUT
PC	DM-V200-PA15	5008328F	Samsung	-
PC	Inspiron 580s	2GRNV2X	Dell	-
PC	DM-G600	501099R	Samsung	-
USB Keyboard	SK-8185	OY526K	Dell	-
USB Mouse	SNJ-B138	Z164146	Samsung	-
USB Memory	DT101	-	Kingston	-
USB Memory	DT101	-	Kingston	-
Earphone	-	-	Samsung	-

3.2 EUT operating mode(s)

To achieve compliance applied standard specification, the following mode(s) were made during compliance testing:

Operating Mode 1	VGA IN
Operating Mode 2	HDMI IN
Operating Mode 3	DP IN

3.3 Details of Sampling

Customer selected, single unit.

3.4 Cable description

The type(s) of cables which were connected to the ports (of the EUT) are as follows:

No	Connect Cable	Length [m]	Ferrite core [Y/N]	Remark
1	VGA in	1.5	Y	To PC
2	HDMI in	1.5	Y	To PC
3	DP	1.5	N	FOR EUT
4	POWER	1.8	N	FOR EUT
5	Audio In	1.5	Y	To PC
6	USB In	1.5	Y	To PC
7	Earphone	0.5	N	FOR EUT

3.5 EUT Description

The following features describe EUT represented by this report:

Test model: LS24C65U

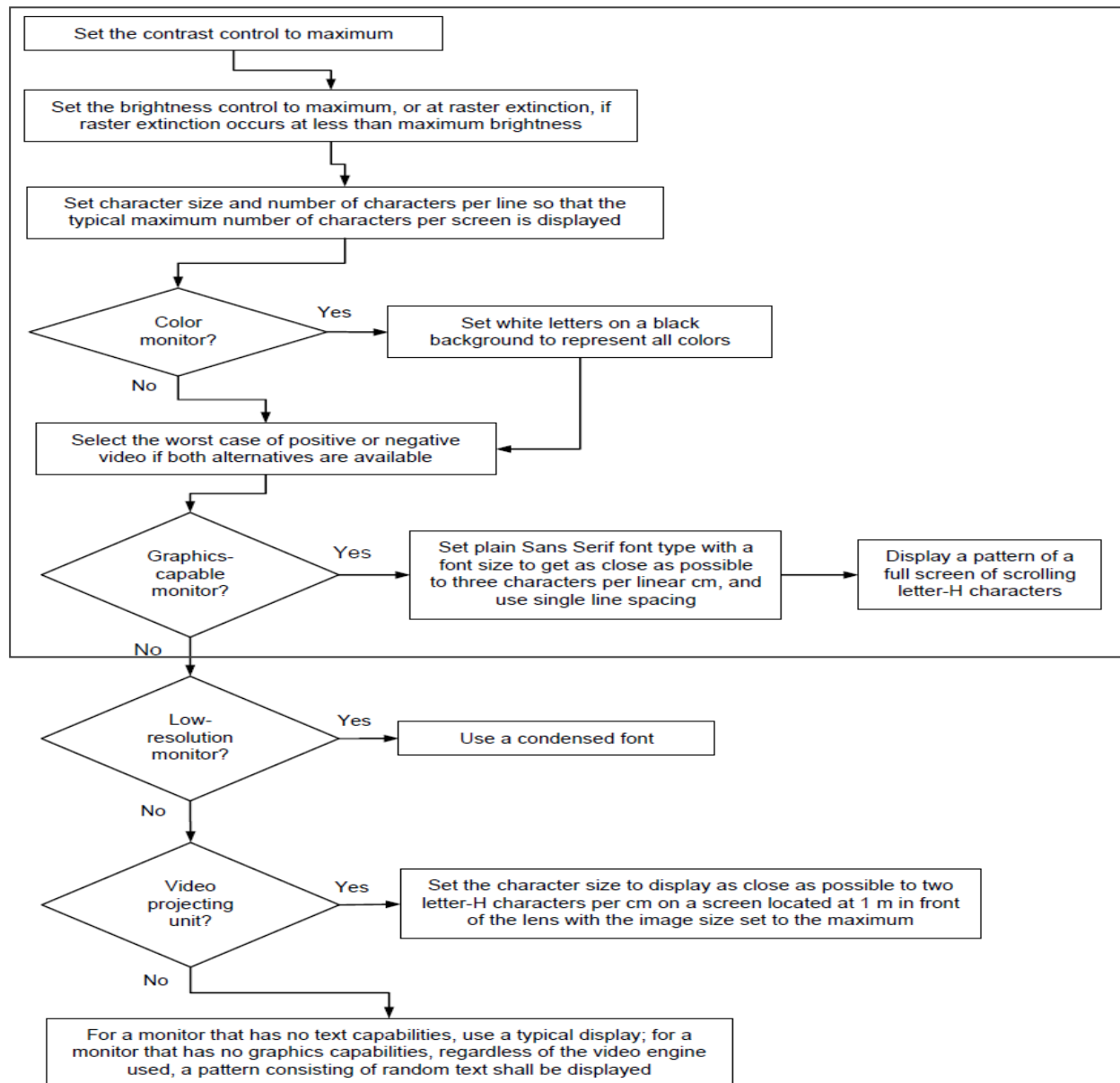
Model Name		S23C650K	LS24C65U	S27C650D
Panel	Size	23 Inches (58 cm)	23.6 Inches (59 cm)	27 Inches (68 cm)
	Display area	509.76 mm (H) x 286.74 mm (V)	521.28 mm (H) x 293.22 mm (V)	597.6 mm (H) x 336.15 mm (V)
	Pixel Pitch	0.2655 mm (H) x 0.2655 mm (V)	0.2715 mm (H) x 0.2715 mm (V)	0.31125 mm (H) x 0.31125 mm (V)
Synchronization	Horizontal Frequency	30 ~ 81 kHz		
	Vertical Frequency	56 ~ 75 Hz		
Display Color		16.7M		
Resolution	Optimum Resolution	1920x1080@60Hz		
	Maximum Resolution	1920x1080@60Hz		
Maximum Pixel Clock		148 MHz (Analog,HDMI)	148 MHz (Analog,HDMI,DisplayPort)	148 MHz (Analog,DVI,DisplayPort)
Power Supply		This product uses 100 to 240V. Refer to the label at the back of the product as the standard voltage can vary in different countries.		
Signal connectors		15pin-to-15pin D-sub cable, Detachable HDMI to DVI Cable ,Detachable HDMI Cable,Detachable	15pin-to-15pin D-sub cable, Detachable DP to DP Cable ,Detachable HDMI to DVI Cable ,Detachable HDMI Cable,Detachable	15pin-to-15pin D-sub cable, Detachable DVI-D to DVI-D connector, Detachable DP Cable ,Detachable

Model Name		S23C650K	LS24C65U	S27C650D
Dimensions (W x H x D) / Weight	Without Stand	21.4 x 12.7 x 2.2 Inches 542.9 x 321.4 x 55.4 mm	21.8 x 13.0 x 2.18 Inches 554.6 x 330.5 x 55.45 mm	25.2 x 14.9 x 2.2 Inches 639 x 378.1 x 56.7 mm
	With Stand	MIN: 21.4 x 13.57 x 8.8 Inches / 12.02 lbs 542.9 x 344.65 x 224.0 mm / 5.45 kg MAX: 21.4 x 18.69 x 8.8 Inches / 12.02 lbs 542.9 x 474.65 x 224.0 mm / 5.45 kg	MIN: 21.8 x 14.07 x 8.8 Inches / 12.02 lbs 554.6 x 357.35 x 224.0 mm / 5.45 kg MAX: 21.8 x 19.19 x 8.8 Inches / 12.02 lbs 554.6 x 487.35 x 224.0 mm / 5.45 kg	MIN: 25.2 x 15.9 x 8.8 Inches / 13.78 lbs 639 x 402.8 x 224 mm / 6.25 kg MAX: 25.2 x 21.0 x 8.8 Inches / 13.78 lbs 639 x 532.8 x 224 mm / 6.25 kg
VESA Mounting Interface		3.9 Inches x 3.9 Inches 100 mm x 100 mm (For use with Specialty(Arm) Mounting hardware.)		
Environmental considerations	Operating	Temperature : 50°F – 104°F (10°C – 40°C) Humidity : 10 % – 80 %, non-condensing		
	Storage	Temperature : -4°F – 113°F (-20°C – 45°C) Humidity : 5 % – 95 %, non-condensing		
Plug-and-Play		This monitor can be installed and used with any Plug-and-Play compatible systems. Two-way data exchange between the monitor and PC system optimizes the monitor settings. Monitor installation takes place automatically. However, you can customize the installation settings if desired.		
Panel Dots (Pixels)		Due to the nature of the manufacturing of this product, approximately 1 pixel per million (1ppm) may be brighter or darker on the LCD panel. This does not affect product performance.		

3.6 Description of the EUT exercising method

The EUT exercise program used during EMI testing was CSQAL standardized test program for MS Windows. The program repetitively sends a screen of H – Character to the display. Connect video output of computer on EUT's PC IN (D-sub),HDMI port, DP port and scrolled H – character continuously on EUT's screen.

The EUT system includes a monitor, the operational conditions shown as follows, within the selected area.



- Notes:**
1. Set the brightness control to maximum
 2. Set the contrast control to maximum
 3. Display a pattern of a full screen of scrolling letter-H characters with a font size to get as close as possible to three characters per linear cm and use single line spacing

3.7 Measurement uncertainty

Where relevant, the following measurement uncertainty levels have been estimated for tests performed on the apparatus: (According to CISPR 16-4 and UKAS Lab 34.)

Test type			Measurement uncertainty (C.L. 95 %, k = 2)
Disturbance voltage at the mains terminals			2.8 dB
Radiated Disturbance	Horizontal	30 MHz - 1 GHz	4.05 dB
	Vertical	30 MHz - 1 GHz	4.88 dB
	Horizontal	1GHz - 6 GHz	3.36 dB
	Vertical	1GHz - 6 GHz	3.36 dB

4. Results of individual test

4.1 Conducted disturbance

Both conducted lines are measured in Quasi-Peak and Average mode, including the worst-case data points for each tested configuration.

The EUT measured in accordance with the methods described in standards.

Limits for conducted disturbance at the mains ports of class B ITE

Frequency range Limits MHz	Limits dB(μ V)	
	Quasi-peak	Average
0,15 to 0,50	66 to 56	56 to 46
0,50 to 5	56	46
5 to 30	60	50

Note 1: 1 μ V is regarded as 0 dB.
 Note 2: The limits shall decrease linearly with the logarithm of the frequency in the range 150 – 500 kHz.
 Note 3: If the average limit is met in the measurement with quasi-peak detector, the measurement with average detector is unnecessary.
 Note 4: The lower limit shall apply at the transition frequency.

If the reading on the measuring receiver shows fluctuations close to the limit, the reading shall be observed for at least 15 seconds at each measurement frequency, the highest reading shall be recorded, with the exception of any brief isolated high reading (which shall be ignored).

4.1.1 Test instrumentation

Test instrumentation used in the Conducted disturbance test was as follows:

Test instrumentation	Model name	Manufacturer	Serial or Firmware (No./Ver.)	Calibration	
				Date	Interval (Month)
Test Software	EP5CE	TOYO	V 4.7.10	N/A	N/A
Measuring receiver	ESCI	R&S	101027	2012.03.02	12
Artificial mains network	ENV216	R&S	101122	2012.08.23	12
Artificial mains network	ENV216	R&S	101059	2012.08.23	12
ISN	ISN T800	TESEQ	28602	2012.08.23	12
ISN	ISN T8-CAT6	TESEQ	27286	2012.03.02	12

4.1.2 Photograph of the test Configuration

(Front)



(Rear)

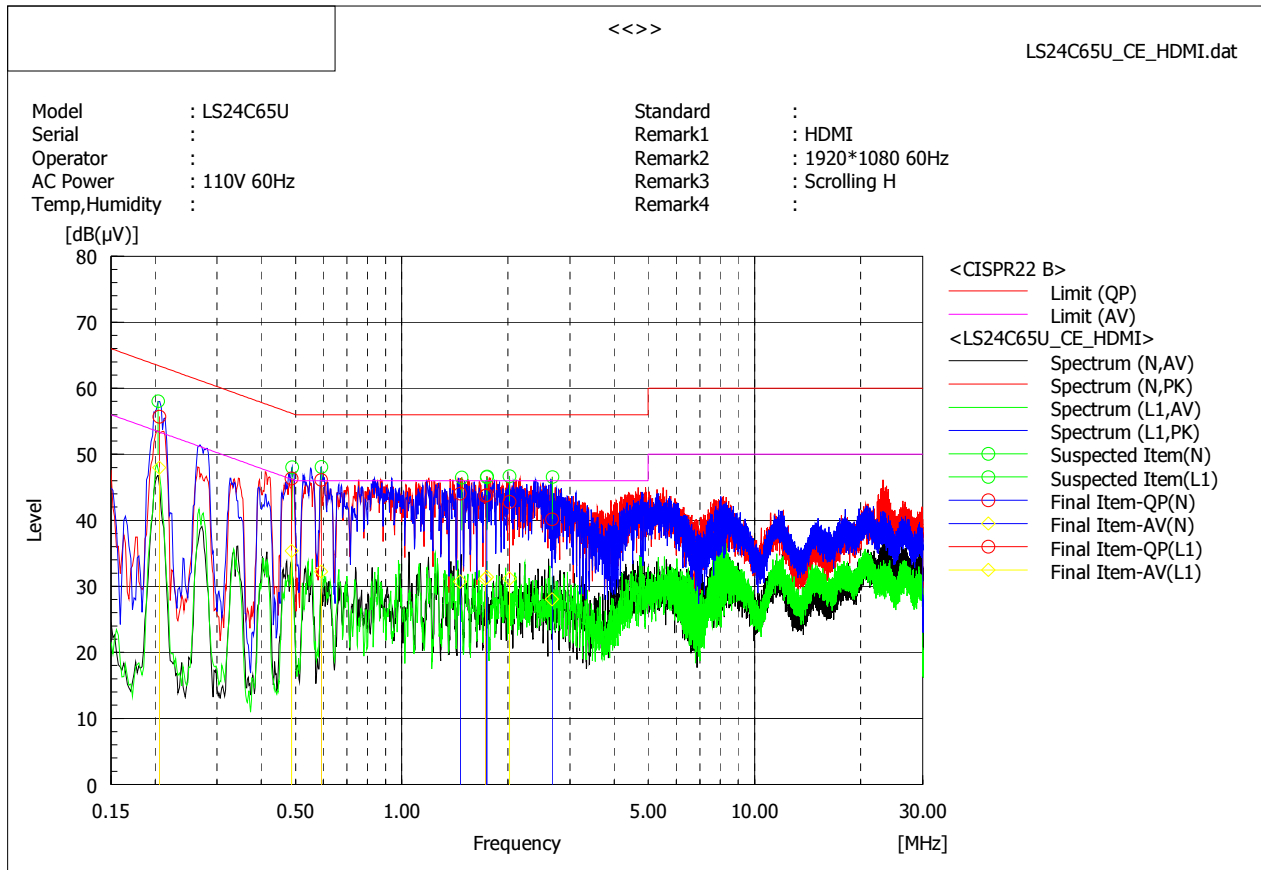


Operating Mode: HDMI IN

Set the brightness control to maximum

Set the contrast control to maximum

Scan three resolutions (800*600@60Hz, 1024*768@60Hz, 1920*1080@60Hz), then choose the worst one (1920*1080@60Hz) for final evaluation.



Final Result

--- N Phase ---

No.	Frequency [MHz]	Reading QP [dB(μV)]	Reading AV [dB(μV)]	c. f [dB]	Result QP [dB(μV)]	Result AV [dB(μV)]	Limit QP [dB(μV)]	Limit AV [dB(μV)]	Margin QP [dB]	Margin AV [dB]	Remark
1	1.74253	34.1	21.7	9.7	43.8	31.4	56.0	46.0	12.2	14.6	
2	2.66603	30.3	18.2	9.8	40.1	28.0	56.0	46.0	15.9	18.0	
3	1.46335	34.3	21.0	9.7	44.0	30.7	56.0	46.0	12.0	15.3	

--- L1 Phase ---

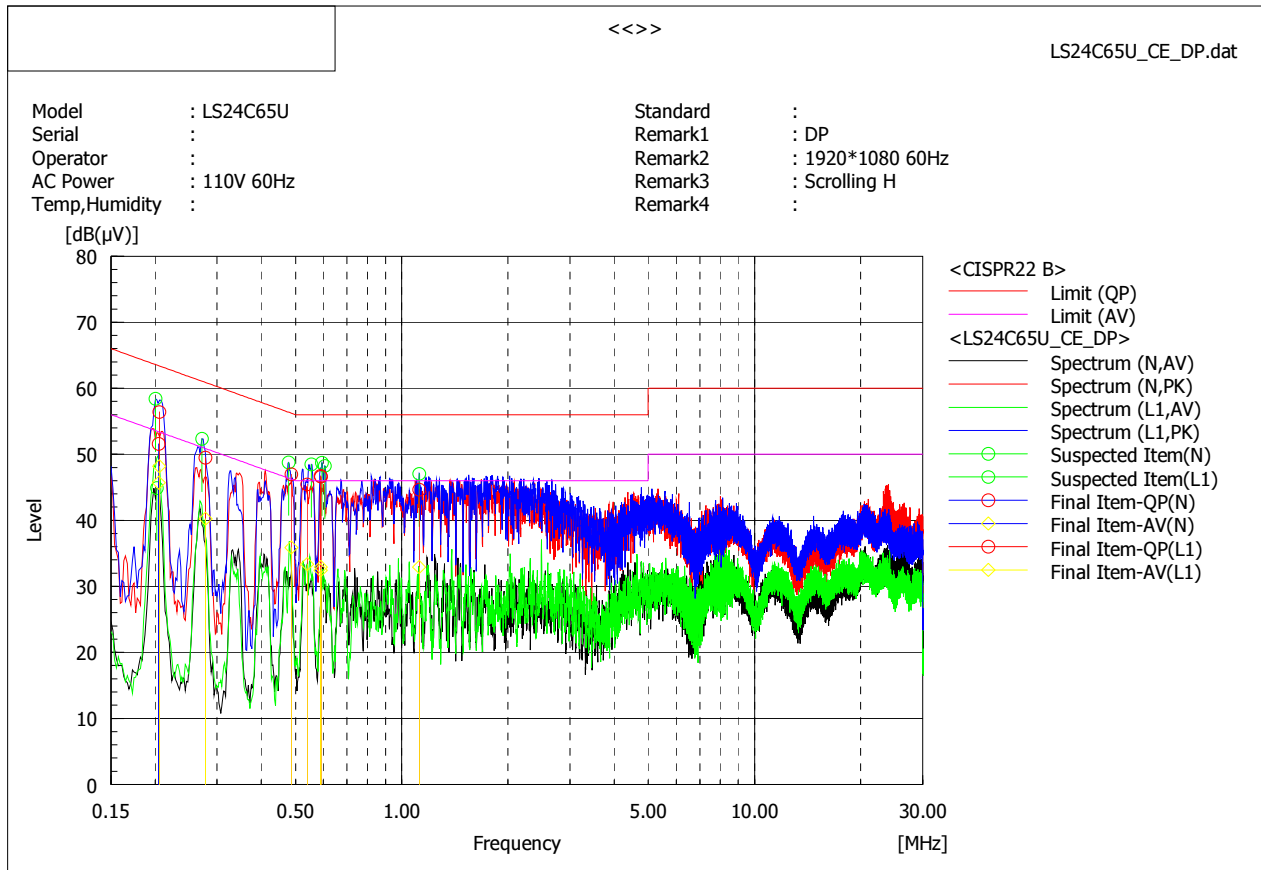
No.	Frequency [MHz]	Reading QP [dB(μV)]	Reading AV [dB(μV)]	c. f [dB]	Result QP [dB(μV)]	Result AV [dB(μV)]	Limit QP [dB(μV)]	Limit AV [dB(μV)]	Margin QP [dB]	Margin AV [dB]	Remark
1	0.20556	46.0	38.3	9.7	55.7	48.0	63.4	53.4	7.7	5.4	
2	0.59131	36.4	22.5	9.7	46.1	32.2	56.0	46.0	9.9	13.8	
3	0.4879	36.6	25.6	9.7	46.3	35.3	56.2	46.2	9.9	10.9	
4	2.02043	33.0	21.4	9.8	42.8	31.2	56.0	46.0	13.2	14.8	
5	1.72606	34.0	21.4	9.7	43.7	31.1	56.0	46.0	12.3	14.9	

Operating Mode: DP IN

Set the brightness control to maximum

Set the contrast control to maximum

Scan three resolutions (800*600@60Hz, 1024*768@60Hz, 1920*1080@60Hz), then choose the worst one (1920*1080@60Hz) for final evaluation.



Final Result

--- N Phase ---

No.	Frequency [MHz]	Reading QP [dB(μV)]	Reading AV [dB(μV)]	c. f [dB]	Result QP [dB(μV)]	Result AV [dB(μV)]	Limit QP [dB(μV)]	Limit AV [dB(μV)]	Margin QP [dB]	Margin AV [dB]	Remark
1	0.20485	41.9	36.0	9.7	51.6	45.7	63.4	53.4	11.8	7.7	

--- L1 Phase ---

No.	Frequency [MHz]	Reading QP [dB(μV)]	Reading AV [dB(μV)]	c. f [dB]	Result QP [dB(μV)]	Result AV [dB(μV)]	Limit QP [dB(μV)]	Limit AV [dB(μV)]	Margin QP [dB]	Margin AV [dB]	Remark
1	0.2058	46.7	38.5	9.7	56.4	48.2	63.4	53.4	7.0	5.2	
2	0.48675	37.2	26.2	9.7	46.9	35.9	56.2	46.2	9.3	10.3	
3	0.27818	39.8	30.5	9.7	49.5	40.2	60.9	50.9	11.4	10.7	
4	0.53943	35.8	23.7	9.7	45.5	33.4	56.0	46.0	10.5	12.6	
5	1.12144	34.9	23.2	9.7	44.6	32.9	56.0	46.0	11.4	13.1	
6	0.59012	36.9	23.2	9.7	46.6	32.9	56.0	46.0	9.4	13.1	
7	0.5894	37.0	22.8	9.7	46.7	32.5	56.0	46.0	9.3	13.5	

Note) Level (Quasi-Peak and/or Average) = Meter Reading (Quasi-Peak and/or Average) + Factor (LISN Insertion Loss + Cable Loss)

Margin = Limit – Level (Quasi-Peak and/or Average)

4.2 Radiated disturbance

Of those disturbances above ($L - 20\text{dB}$), where L is the limit level in logarithmic units, record at least the disturbance levels and the frequencies of the six highest disturbances.

The following data lists the significant emission frequencies, measured levels, correction factors (for antenna and cables), orientation of table, polarization and height of antenna, the corrected reading, the limit, and the amount of margin. All measurements were taken utilizing quasi-peak detection unless stated otherwise.

Measurements were performed at an antenna to EUT distance of 3 meters and elevated between 1 and 4 meters. Both vertical and horizontal antenna polarizations were measured.

Above 1GHz, peak detector function mode was used with resolution bandwidth of 1 MHz and a video bandwidth of 1 MHz. If the peak measured value complies with the average limit, it is unnecessary to perform an average measurement.

Except for Class A digital devices, the field strength of radiated emissions from unintentional radiators at a distance of 3 meters shall not exceed the following values:

Frequency range Limits MHz	Quasi-peak Limits (microvolts/meter)
	Class B
30 to 88	100
88 to 216	150
216 to 960	200
Above 960	500

Note 1: The lower limit shall apply at the transition frequency.
 Note 2: Additional provisions may be required for cases where interference occurs.
 Note 3: 1 $\mu\text{V}/\text{m}$ is regarded as 0 dB.

Measurements above 1GHz were performed at an antenna to EUT distance of 3 meters and elevated 1 to 4 meters in FAC. Both vertical and horizontal antenna polarizations were measured.

Limits for radiated disturbance of ITE at a measuring distance of 3 m

Frequency range Limits MHz	Class A		Class B	
	Peak dB($\mu\text{V}/\text{m}$)	Average dB($\mu\text{V}/\text{m}$)	Peak dB($\mu\text{V}/\text{m}$)	Average dB($\mu\text{V}/\text{m}$)
1000 to 3000	76	56	70	50
3000 to 6000	80	60	74	54

Note 1: The lower limit shall apply at the transition frequency.

4.2.1 Test instrumentation

Test instrumentation used in the Radiated disturbance was as follows:

30MHz~1GHz

Test instrumentation	Model name	Manufacturer	Serial or Firmware (No./Ver.)	Calibration	
				Date	Interval (Month)
Test Software	EP5/RE	TOYO	V 4.7.10	N/A	N/A
Bi-con Antenna	CBL6112D	SCHAFFNER	29069	2011.04.04	24
EMI Receiver	ESCI	R&S	101026	2012.03.02	12
AMPLIFIER	310N	SONOMA	300911	2012.08.23	12
Ant Mast	MA4000	INN CO	-	N/A	N/A
Mast Controller	CO2000	INN CO	-	N/A	N/A
RF Selector	NS4900N	TOYO	-	N/A	N/A

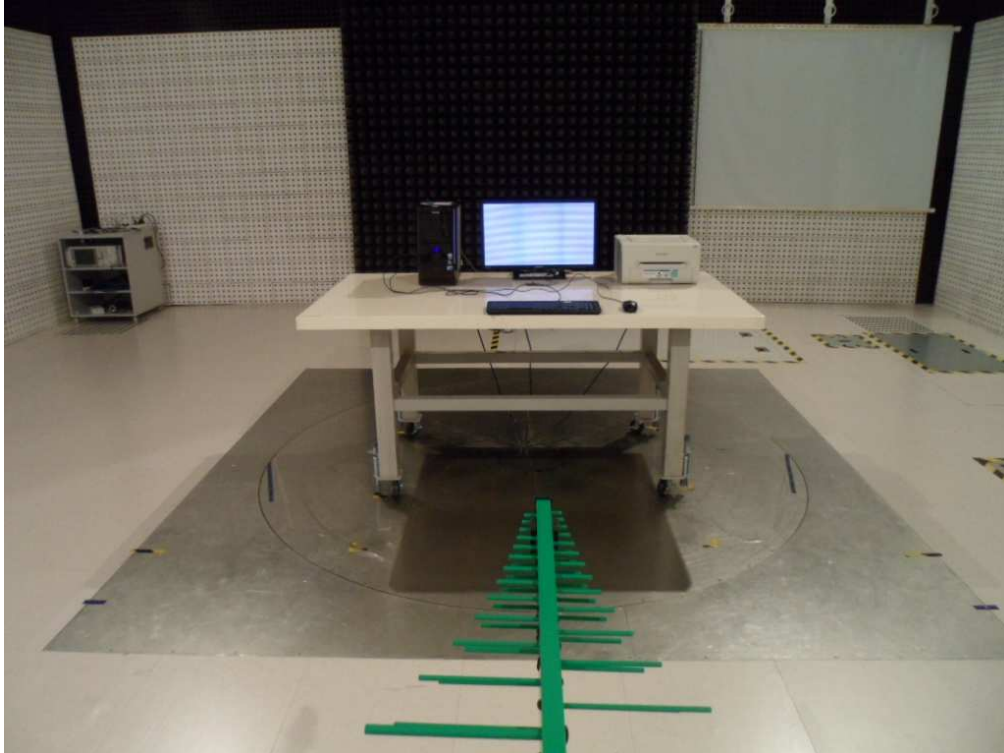
1GHz-2GHz

Test instrumentation	Model name	Manufacturer	Serial or Firmware (No./Ver.)	Calibration	
				Date	Interval (Month)
Test Software	e3	AUDIX	6.110709d	N/A	N/A
Broad-Band Horn Antenna	BBHA9120B	Schwarzbeck	519	2011.04.05	24
EMI Receiver	ESU26	R&S	100243	2012.03.02	12
AMPLIFIER	AMF-4D-00500800-18-13P	TOYO	0934	2012.08.23	12
Ant Mast	AUDIX	AUDIX	-	N/A	N/A

4.2.2 Photograph of the test Configuration

30MHz~1GHz

(Front)

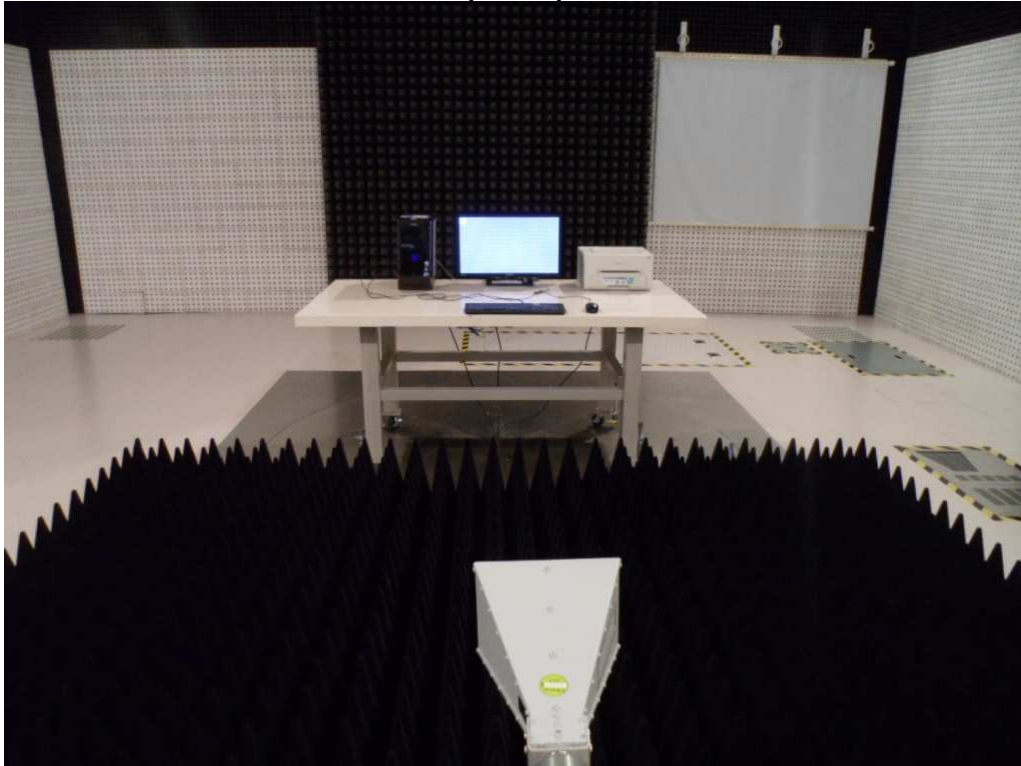


(Rear)



1GHz-2GHz

(Front)



(Rear)



4.2.3 Test results

30MHz~1GHz

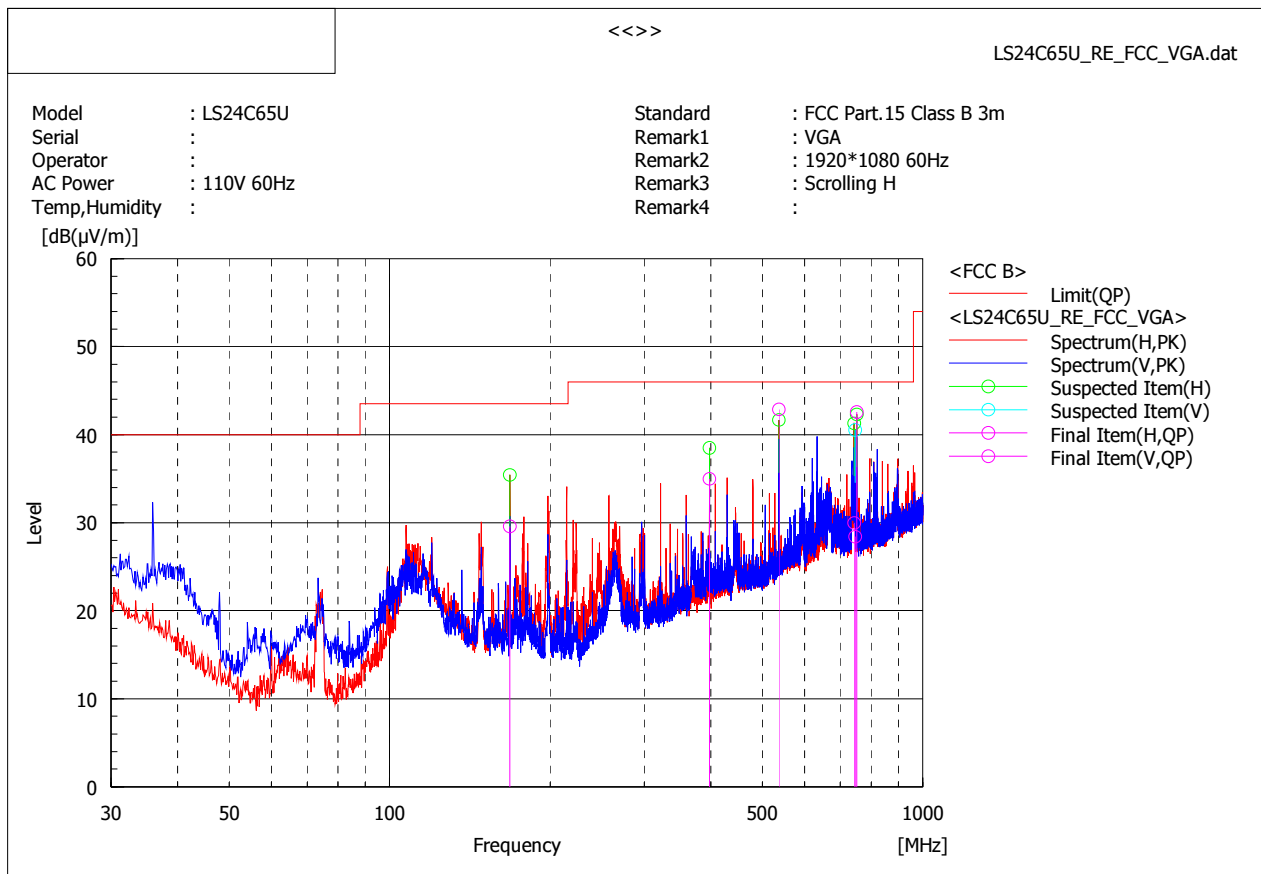
Test date	2012.11.29		Test engineer		Zhongyuan Gao	
Climate condition	Ambient temperature	26 °C	Relative humidity	35 %	Atmospheric pressure	101.6 kPa
	Test place					
3m Semi-Anechoic Chamber						

■ Operating Mode: D-Sub (PC Video IN or Analog) IN Display

Set the brightness control to maximum

Set the contrast control to maximum

Scan three resolutions (800*600@60Hz, 1024*768@60Hz, 1920*1080@60Hz), then choose the worst one (1920*1080@60Hz) for final evaluation.



Final Result

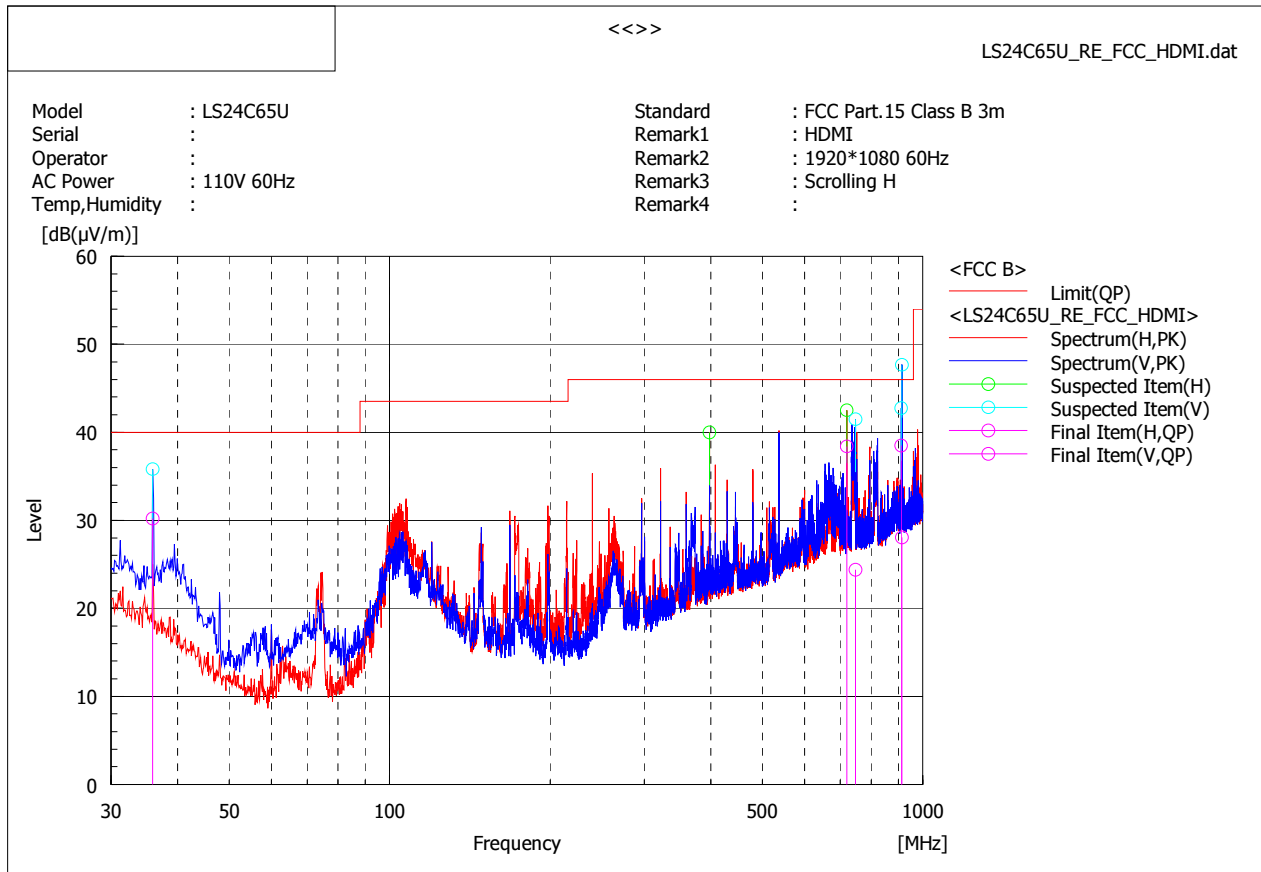
No.	Frequency [MHz]	(P)	S.C	Reading QP [dB(µV)]	c. f [dB(1/m)]	Result QP [dB(µV/m)]	Limit QP [dB(µV/m)]	Margin QP [dB]	Height [cm]	Angle [°]	Remark
1	536.940	H	S	45.3	-2.4	42.9	46.0	3.1	175.0	51.4	
2	751.731	H	S	42.6	0.0	42.6	46.0	3.4	110.0	148.9	
3	397.751	H		40.5	-5.5	35.0	46.0	11.0	158.0	157.5	
4	167.983	H		42.7	-13.1	29.6	43.5	13.9	147.0	249.4	
5	742.950	H		30.1	-0.1	30.0	46.0	16.0	237.0	172.6	
6	746.830	V		28.4	0.0	28.4	46.0	17.6	107.0	194.8	

■ Operating Mode: HDMI IN Display

Set the brightness control to maximum

Set the contrast control to maximum

Scan three resolutions (800*600@60Hz, 1024*768@60Hz, 1920*1080@60Hz), then choose the worst one (1920*1080@60Hz) for final evaluation.



Final Result

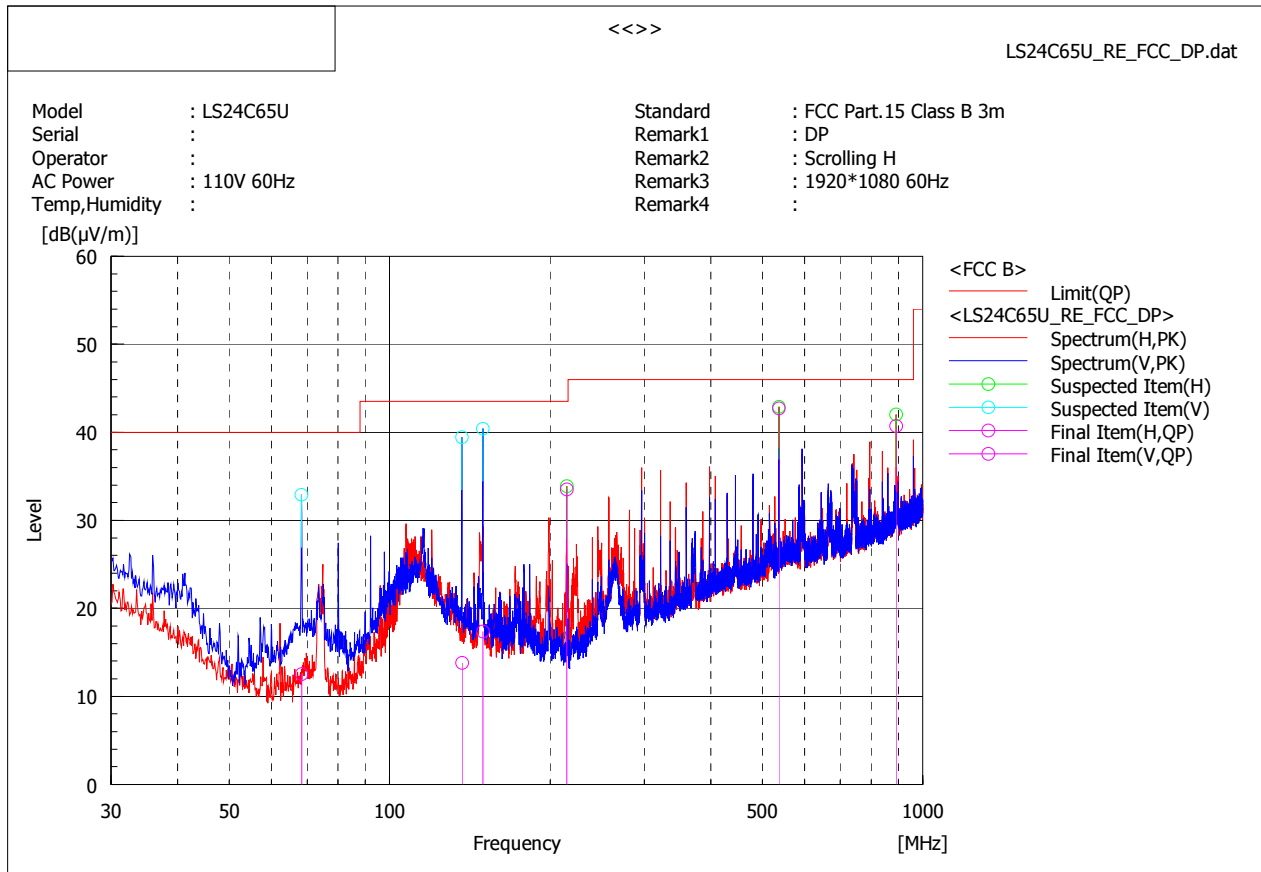
No.	Frequency [MHz]	(P)	S.C	Reading QP [dB(µ V)]	c. f [dB(1/m)]	Result QP [dB(µ V/m)]	Limit QP [dB(µ V/m)]	Margin QP [dB]	Height [cm]	Angle [°]	Remark
1	911.124	V		36.3	2.2	38.5	46.0	7.5	147.0	350.5	
2	720.034	H		38.8	-0.4	38.4	46.0	7.6	107.0	208.7	
3	35.941	V		39.1	-8.9	30.2	40.0	9.8	101.0	250.5	
4	913.936	V	S	25.9	2.2	28.1	46.0	17.9	179.0	200.2	
5	747.921	V		24.4	0.0	24.4	46.0	21.6	101.0	181.0	

■ Operating Mode: DP IN Display

Set the brightness control to maximum

Set the contrast control to maximum

Scan three resolutions (800*600@60Hz, 1024*768@60Hz, 1920*1080@60Hz), then choose the worst one (1920*1080@60Hz) for final evaluation.



Final Result

No.	Frequency [MHz]	(P)	S.C	Reading QP [dB(µ V)]	c. f [dB(1/m)]	Result QP [dB(µ V/m)]	Limit QP [dB(µ V/m)]	Margin QP [dB]	Height [cm]	Angle [°]	Remark
1	536.950	H	S	45.1	-2.4	42.7	46.0	3.3	180.0	99.9	
2	890.953	H	S	38.7	2.0	40.7	46.0	5.3	111.0	126.0	
3	149.707	V	S	29.5	-12.1	17.4	43.5	26.1	133.0	305.0	
4	136.760	V	S	25.5	-11.7	13.8	43.5	29.7	103.0	325.8	
5	68.334	V	S	30.3	-17.8	12.5	40.0	27.5	130.0	255.2	
6	214.772	H	S	46.6	-13.1	33.5	43.5	10.0	100.0	164.4	

Note) Receiving antenna polarization : Horizontal and/or Vertical

Test Distance : 3m, Antenna Height : 1 to 4 meters

Result (Quasi-Peak) = Reading QP + C.F (Antenna Factor + Cable Loss - Amp. Gain)

Margin QP (Quasi-Peak) = Limit - Level QP

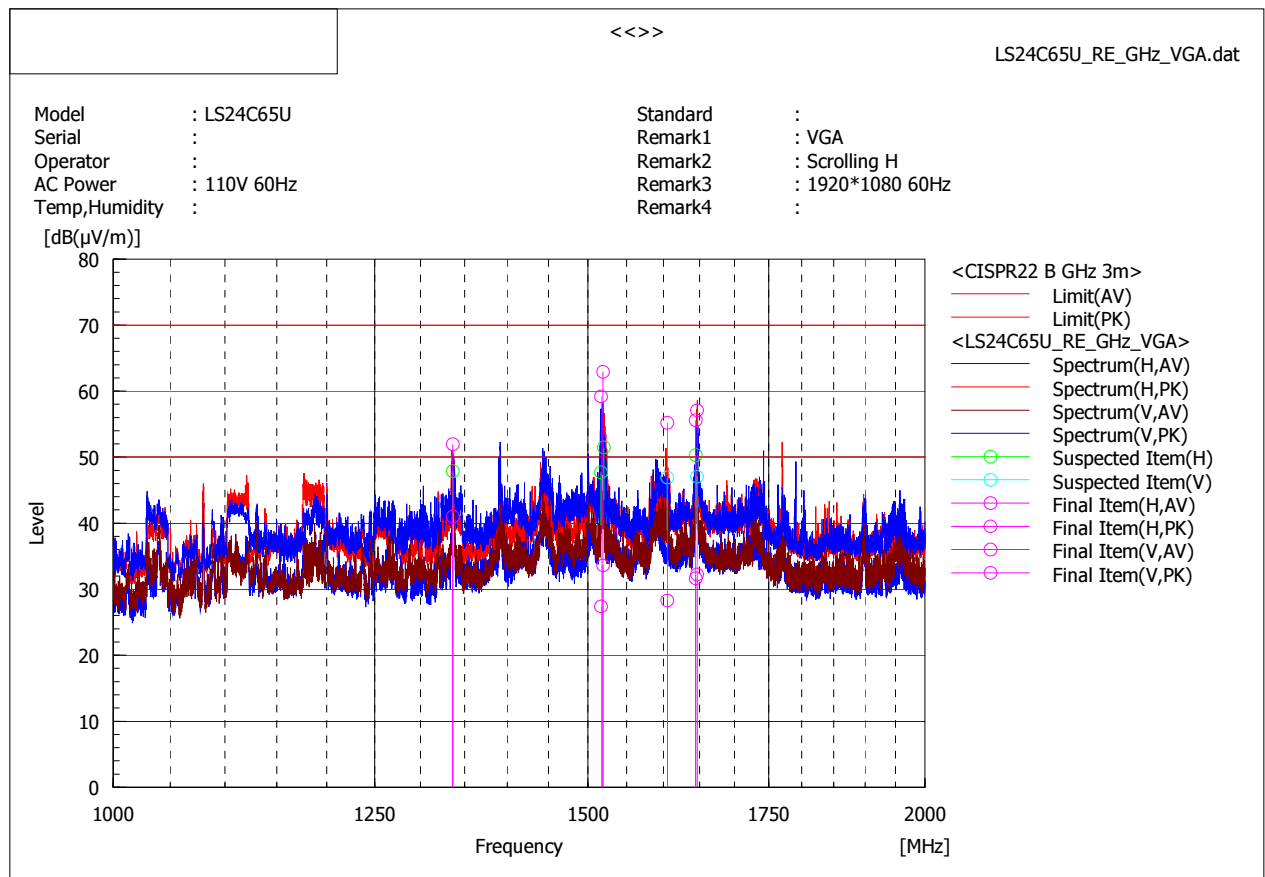
1GHz-2GHz

Test date	2012.12.04		Test engineer		Zhongyuan Gao	
Climate condition	Ambient temperature	25°C	Relative humidity	37 %	Atmospheric pressure	101.8 kPa
	Test place 3m Semi-Anechoic Chamber					

■ **Operating Mode: D-Sub (PC Video IN or Analog) IN Display**

Set the brightness control to maximum, set the contrast control to maximum

Scan three resolutions (800*600@60Hz, 1024*768@60Hz, 1920*1080@60Hz), then choose the worst one (1920*1080@60Hz) for final evaluation.



Final Result

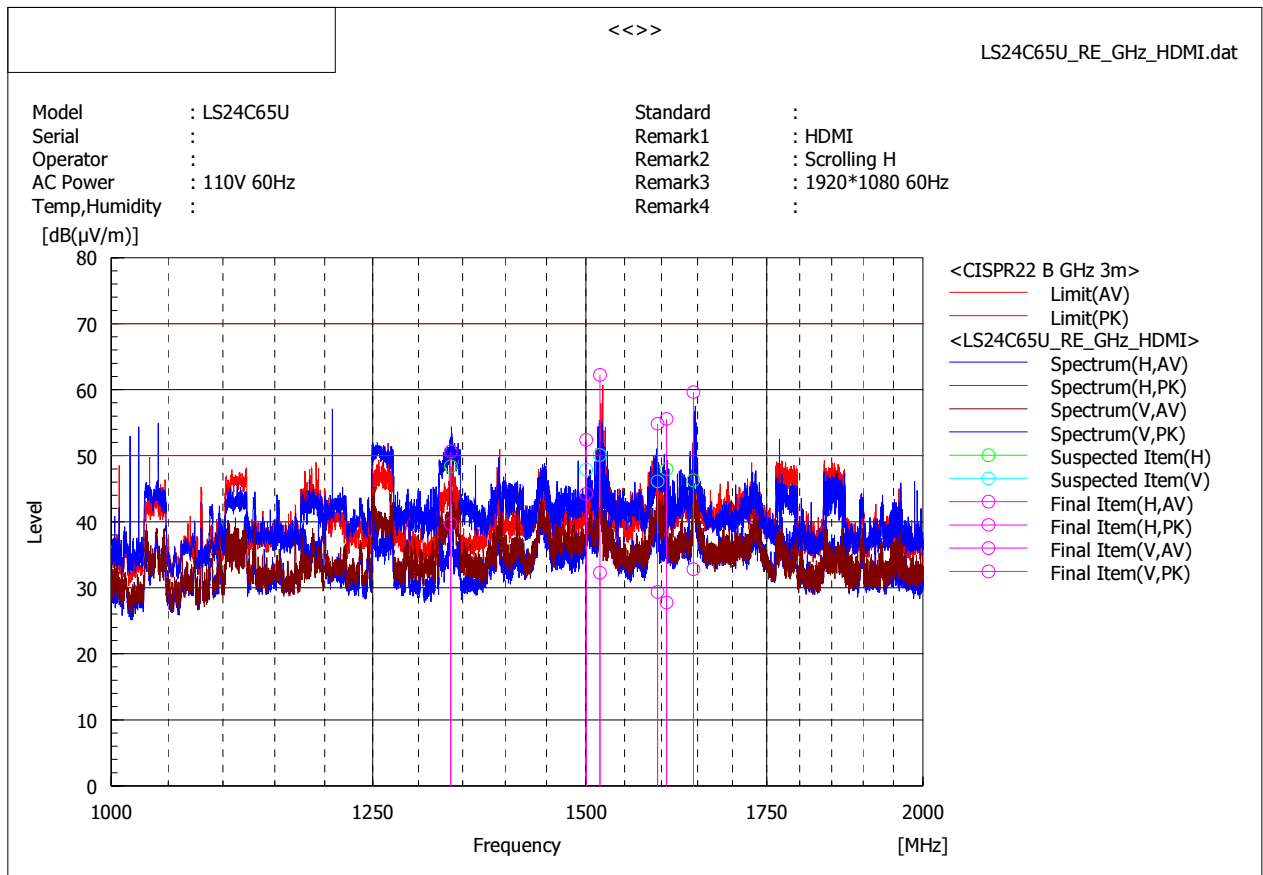
No.	Frequency [MHz]	(P)	Reading AV [dB(μV)]	Reading PK [dB(μV)]	c. f [dB(1/m)]	Result AV [dB(μV/m)]	Result PK [dB(μV/m)]	Limit AV [dB(μV/m)]	Limit PK [dB(μV/m)]	Margin AV [dB]	Margin PK [dB]	Height [cm]	Angle [°]	Remark
1	1519.394	H	48.0	77.3	-14.4	33.6	62.9	50.0	70.0	16.4	7.1	197.0	219.8	
2	1516.500	H	41.8	73.6	-14.4	27.4	59.2	50.0	70.0	22.6	10.8	281.0	352.1	
3	1646.500	V	43.9	68.8	-11.7	32.2	57.1	50.0	70.0	17.8	12.9	174.0	352.1	
4	1644.375	H	43.3	67.3	-11.7	31.6	55.6	50.0	70.0	18.4	14.4	101.0	238.6	
5	1605.000	V	40.6	67.5	-12.3	28.3	55.2	50.0	70.0	21.7	14.8	198.0	307.6	
6	1336.500	H	56.8	67.7	-15.8	41.0	51.9	50.0	70.0	9.0	18.1	123.0	187.2	

■ Operating Mode: HDMI IN Display

Set the brightness control to maximum

Set the contrast control to maximum

Scan three resolutions (800*600@60Hz, 1024*768@60Hz, 1920*1080@60Hz), then choose the worst one (1920*1080@60Hz) for final evaluation.



Final Result

No.	Frequency [MHz]	(P)	Reading AV [dB(µ V)]	Reading PK [dB(µ V)]	c. f [dB(1/m)]	Result AV [dB(µ V/m)]	Result PK [dB(µ V/m)]	Limit AV [dB(µ V/m)]	Limit PK [dB(µ V/m)]	Margin AV [dB]	Margin PK [dB]	Height [cm]	Angle [°]	Remark
1	1517.839	V	46.7	76.6	-14.4	32.3	62.2	50.0	70.0	17.7	7.8	180.0	318.4	
2	1336.500	H	55.5	66.5	-15.8	39.7	50.7	50.0	70.0	10.3	19.3	100.0	148.1	
3	1606.750	H	40.1	67.8	-12.3	27.8	55.5	50.0	70.0	22.2	14.5	255.0	347.9	
4	1500.250	V	59.0	67.2	-14.8	44.2	52.4	50.0	70.0	5.8	17.6	197.0	18.1	
5	1644.125	H	44.6	71.5	-11.8	32.8	59.7	50.0	70.0	17.2	10.3	214.0	347.9	
6	1594.625	V	41.9	67.3	-12.5	29.4	54.8	50.0	70.0	20.6	15.2	271.0	341.4	

Appendix A – EUT photography

(Front)



(Rear)



(Panel)



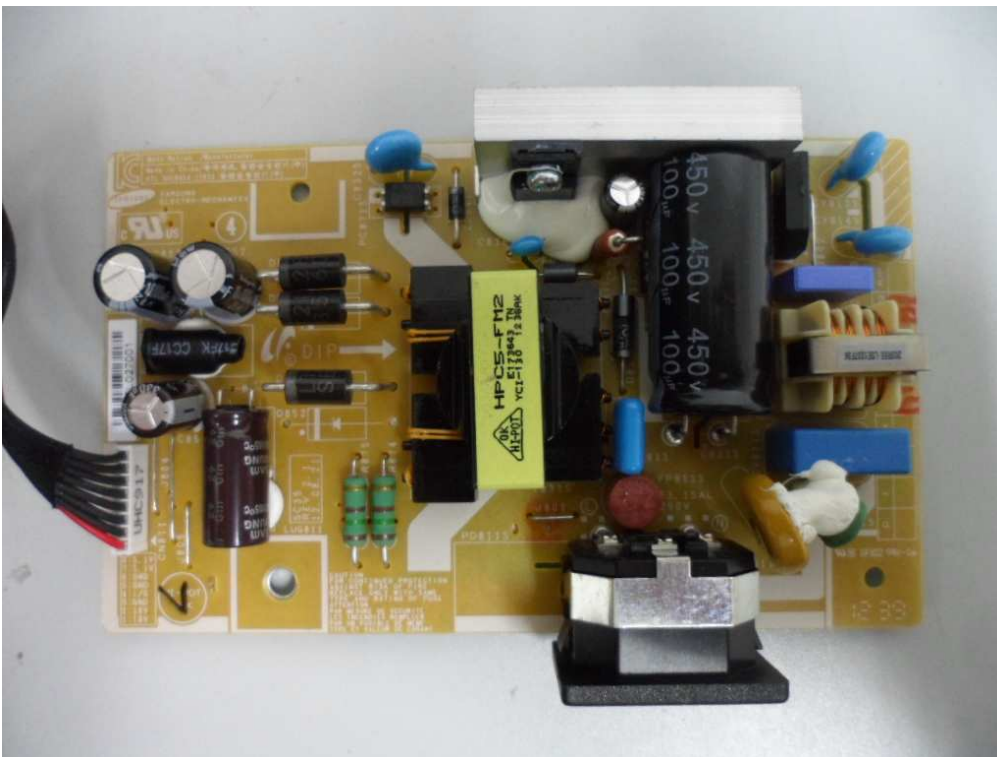
(MAIN Board)



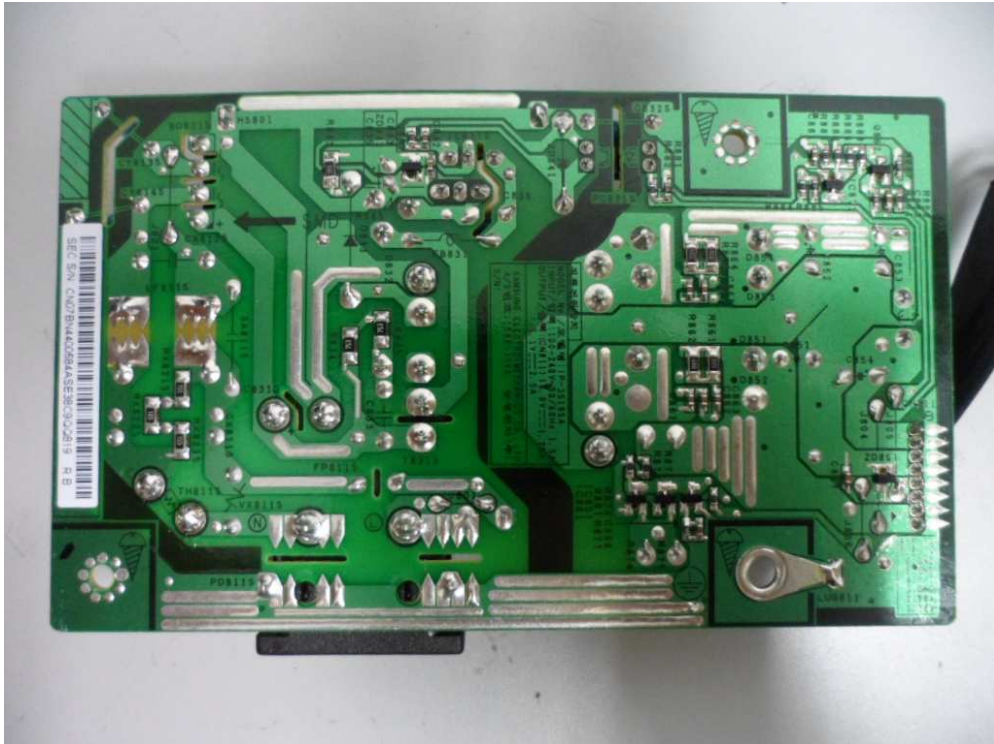
(MAIN Board)



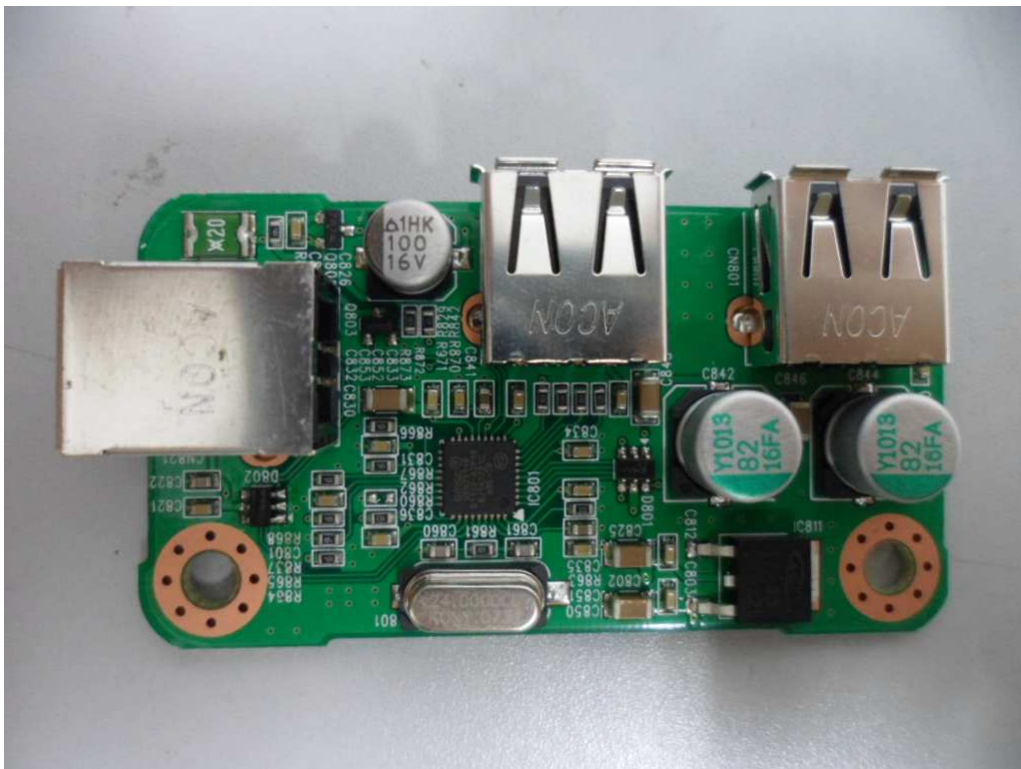
(Power Board)



(Power Board)



(USB Board)



(Crystal Main Board)

