





TCH2P_T TEP_T T9P_T T2P_T T0P_T
TCK2M_T T5M_T T3M_T T2M_T T0M_T
T7M_T T6P_T T4P_T TCKIP_T TIP_T
T7P_T T6M_T T4M_T TCKIM_T TIM_T

+SV_MAIN_T

WP
HOLD

T_PANEL_5V

MODEL: SC570 Ms for _1A1H
CODE: BN41-01961A
BN41-01961
DATE: 2012.11.23
SIZE: 143*75 / 1.6T
REV: MP1.0
CEM-3 PTH

E-PASS

L1 VLED_T
L2
L3
L4

ADP_VCC_T

ADP_GND_T

K_SDA
K_SCL
K_LED
K_3.3V
K_GND

110131NDC WK
WKB-001121108 CN

330n K 275V-
436D MKP X2

75A 250V
4358 MKP
X2

FP801
250V

NT8015
Hansol

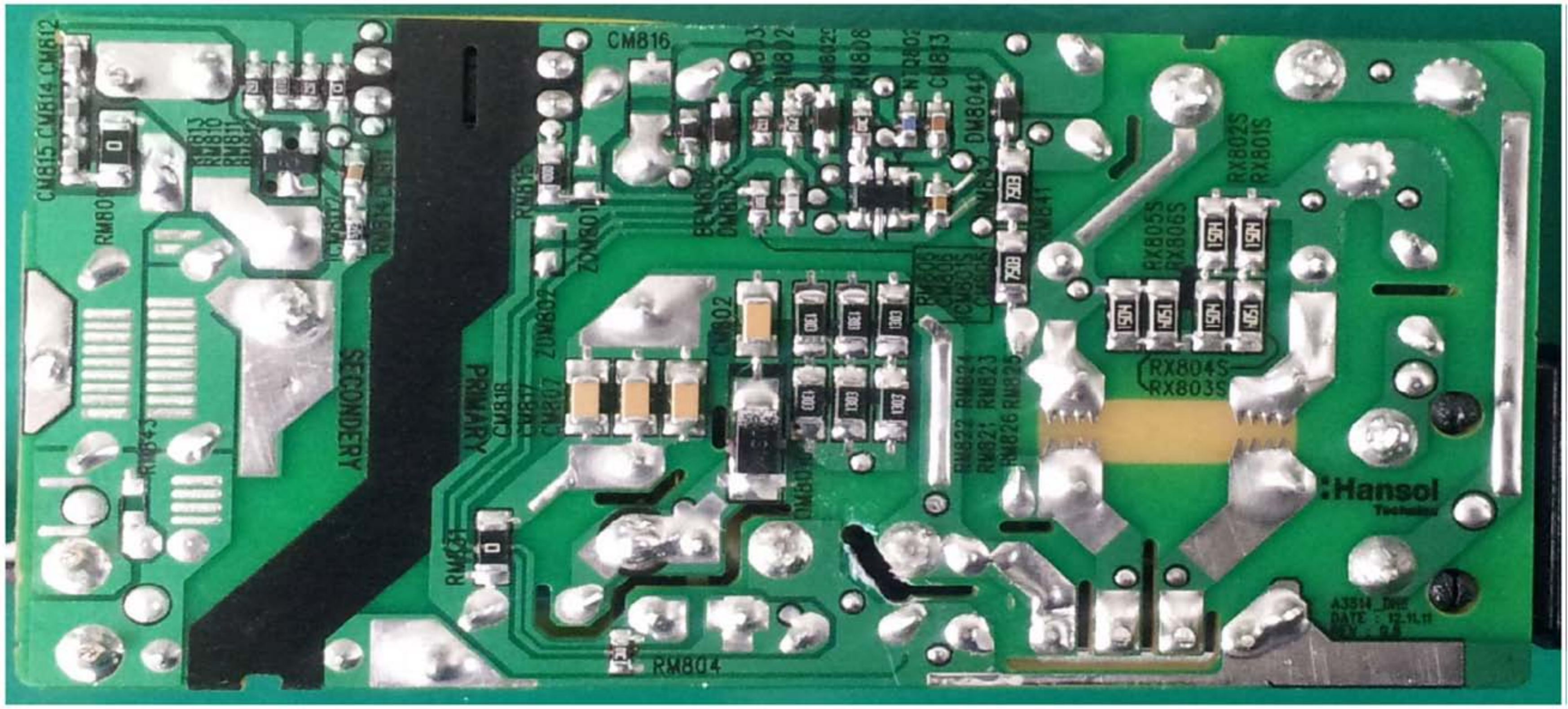
VX801

207
Voltage

185
05

5715
DIP

PC88015



CM815 CM814 CM812

RM801

RM813
RM810
RM811

SECONDARY

RM843

RM825

PRIMARY

CM81R

CM817

CM827

ZM802

ZM801

RM804

CM816

CM802

BM802

DM803

RM803

DM802

RM808

NTQ802

CM813

DM8040

RM841

RM841

RX802S
RX801S

RX805S
RX806S

RX804S
RX803S

RM822 RM824
RM821 RM823
RM826 RM825

Hansol
Technologies

A35H_DWE
DATE: 12-11-11
REV: 04