

## Request for class II permissive change

FCC ID:A3LLS24B240

Date:2012/08/17

TO: Federal Communication Commission

Please be notified that we, the undersigned, **Samsung Electronics Co., Ltd.** declare that the reasons for this Class II permissive change are as bellow:

1:Change to use new adapter

2:Change to use new panel

Please refer to the below form for detailed information:

Item	Change information		Remark
	Before	After	
Adapter	AD-3014N	PS30W-14J1	Due to different adapter
Panel	M236HGE-L10	HM236WU1-300	Due to different Panel

Thank you!



Peter Ra, Manager  
Samsung Electronics Co., Ltd.

# The photos for the adapter



Before change  
AD-3014N front view



Before change  
AD-3014N rear view



Before change  
AD-3014N front view



Before change  
AD-3014N rear view



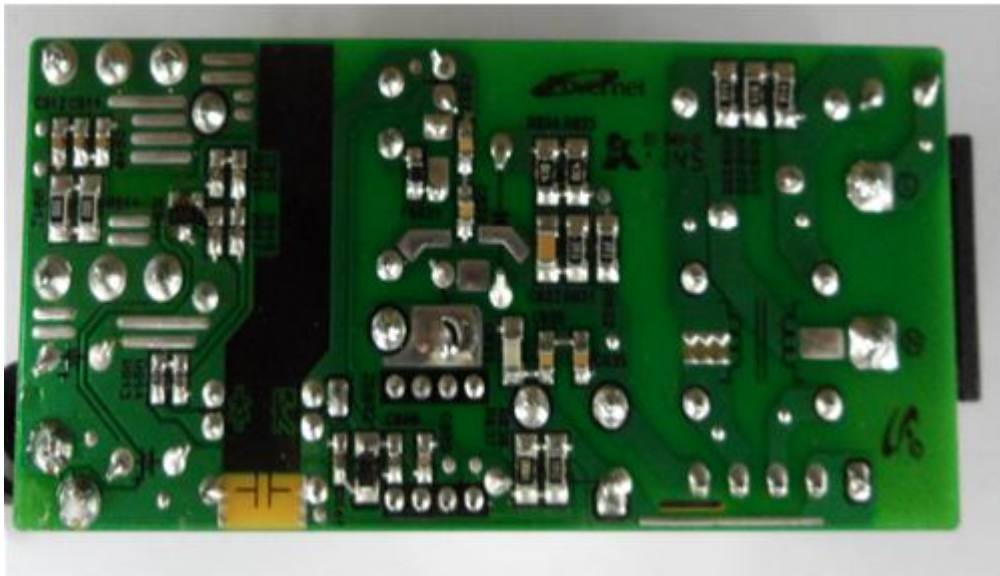
Back change  
 PS30W-14J1 front view



Back change  
 PS30W-14J1 rear view



Back change  
PS30W-14J1 front view



Back change  
PS30W-14J1 rear view

## The photos for the Panel



Before change  
M236HGE-L10 front view



Before change  
M236HGE-L10 rear view



Before change  
M236HGE-L10 rear view



Back change  
HM236WU1-300 front view



Back change  
HM236WU1-300 rear view



Back change  
HM236WU1-300 rear view