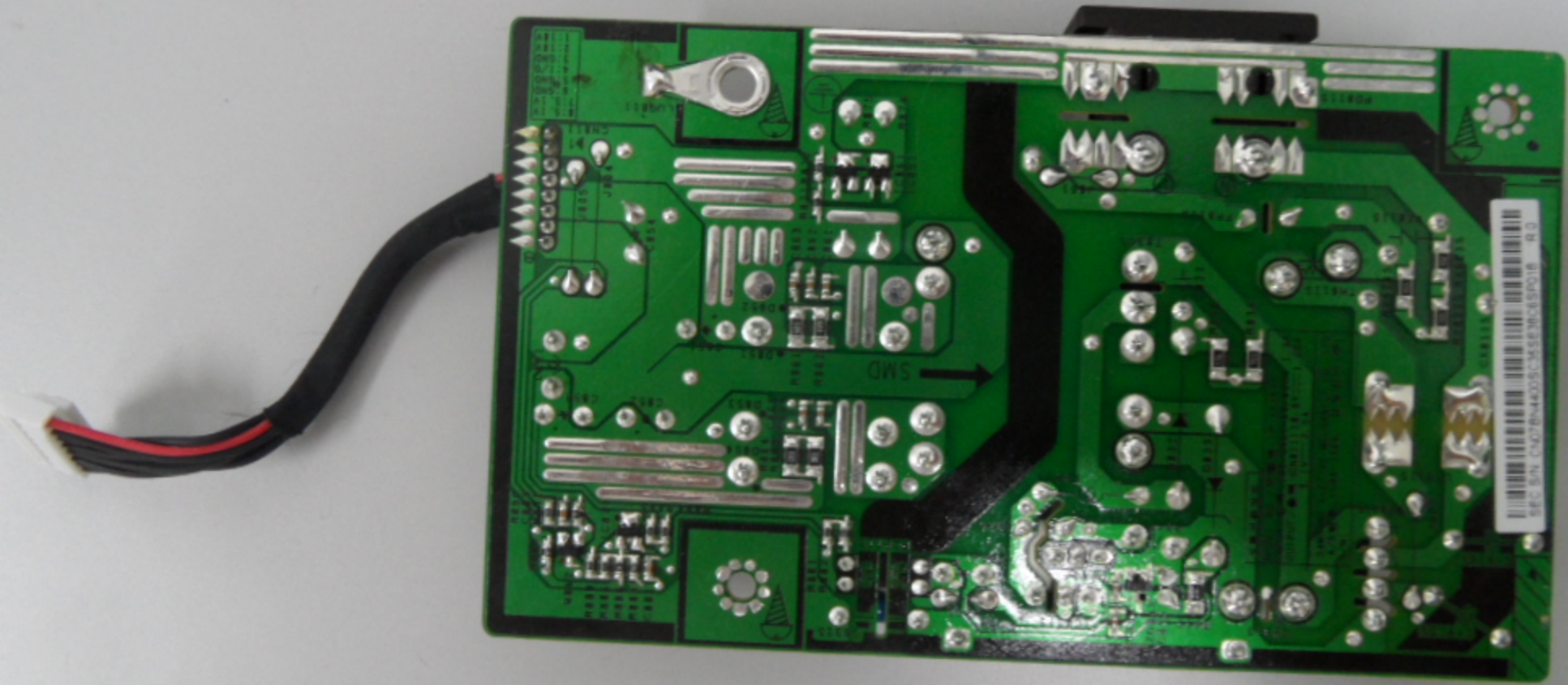


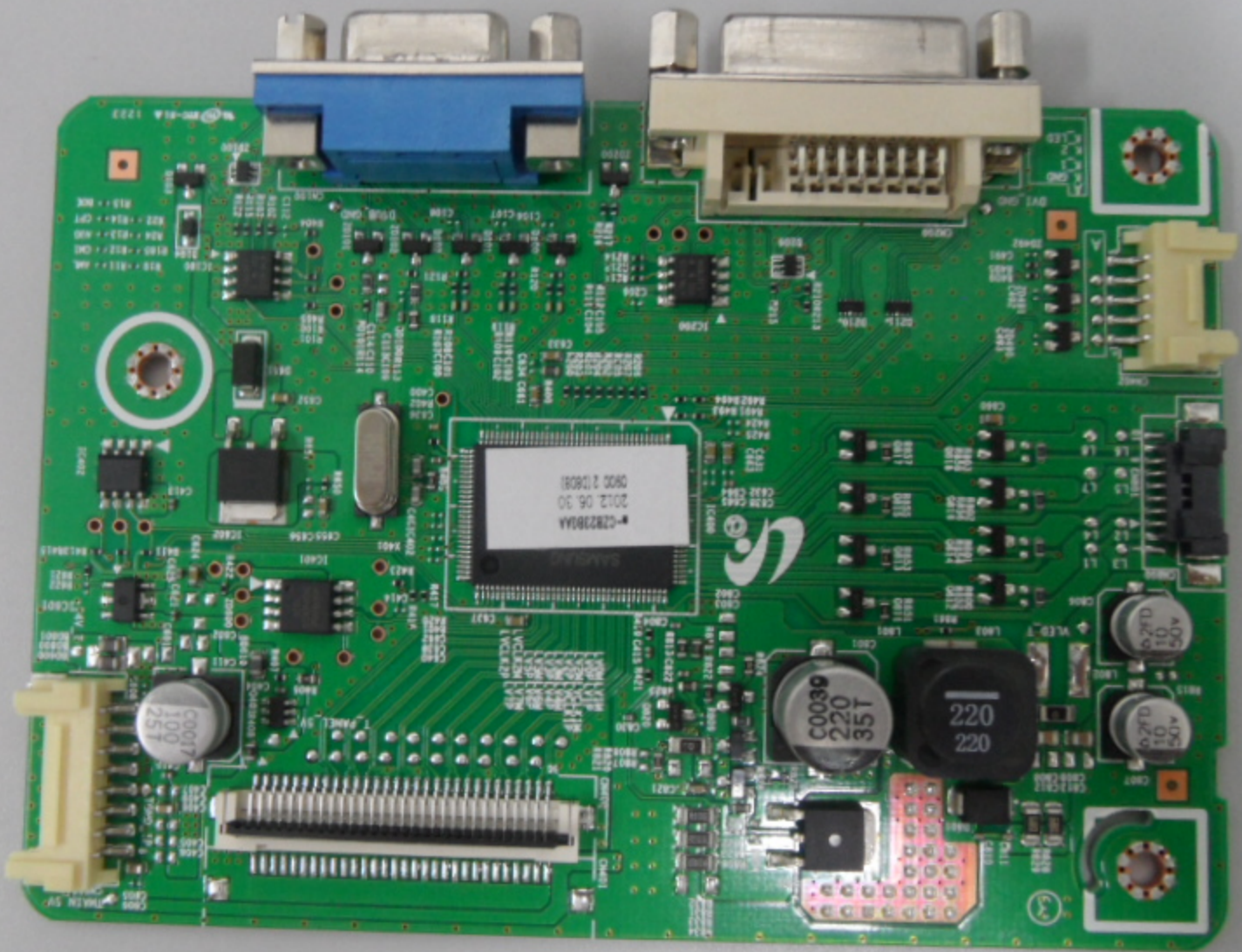
L78220K710  
1224  
ENOT-01116A  
77CF49850 701  
55A21E92821J7521284010E 28







SEC. BN. CN07B440036553665001B\_R0





SIZE: 119\*84 1.6T

LVT1_T	LVM1_T
LVL2SP_T	LVL2SM_T
LVP1_T	LVP1_T
LVP2_T	LVP2_T
LVL3IP_T	LVL3SM_T
LVP3_T	LVP3_T
LVP4_T	LVP4_T
LVP5_T	LVP5_T
LVP6_T	LVP6_T
LVP7_T	LVP7_T
LVP8_T	LVP8_T
LVP9_T	LVP9_T
LVP10_T	LVP10_T
LVP11_T	LVP11_T
LVP12_T	LVP12_T
LVP13_T	LVP13_T
LVP14_T	LVP14_T
LVP15_T	LVP15_T
LVP16_T	LVP16_T
LVP17_T	LVP17_T
LVP18_T	LVP18_T
LVP19_T	LVP19_T
LVP20_T	LVP20_T

PCB CODE: BN41-01916A  
 MODEL: SC200/450  
 DATE: 2012.06.15  
 CEM-3 PTH  
 REV: MP1.0

LS23C20KBS/EN  
 20120709  
 1590 69076700000 098980 - L04  
 C.N TO BN41

RT1\_000  
 RT1\_1  
 RT1\_2  
 RT1\_3

RT1  
 RT2  
 RT3  
 RT4  
 RT5  
 RT6  
 RT7  
 RT8  
 RT9  
 RT10  
 RT11  
 RT12  
 RT13  
 RT14  
 RT15  
 RT16  
 RT17  
 RT18  
 RT19  
 RT20