



SAMSUNG

Model: S2405
Serial: 1234567890
Date: 2024-01-01



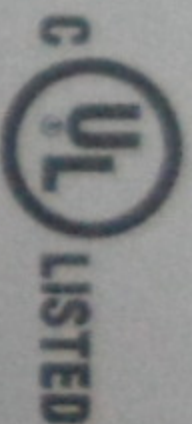
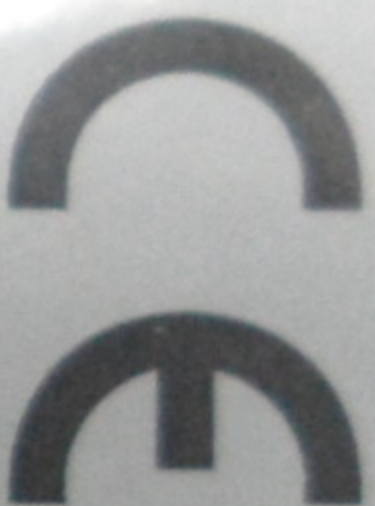


AC/DC ADAPTER 직류전원장치
FUENTE DE ALIMENTACION
交流电源适配器 交流電源供應器

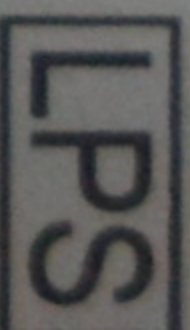
MODEL/MODELLO/型号/型號: A2514_DPN

INPUT/입력/ENTRADA/輸入/輸入: 100-240V ~ 50/60Hz, 1.0A

OUTPUT/출력/SALIDA/輸出/輸出: 14.0V \Rightarrow 1.79A

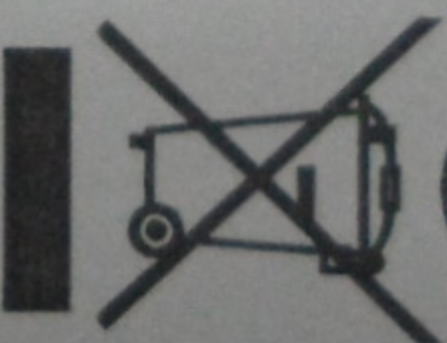
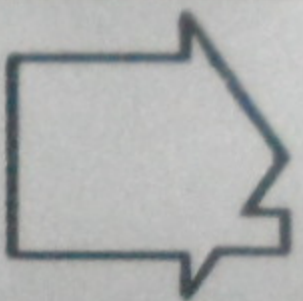
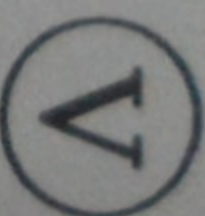


E153405
I.T.E POWER SUPPLY
E231898
68WJ
AV POWER SUPPLY



SU10349-12007A

최저소비효율기준 만족제품
판매원: 삼성전자 주식회사
A/S 문의: 1588-3366



INPUT : 100-240V ~ 50/60Hz.

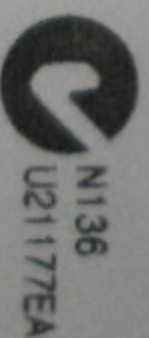
1.0A 60-80VA

OUTPUT : 14V \Rightarrow 1.79A

輸入員/日本輸入業者: SAMSUNG ELECTRONICS JAPAN Co.,Ltd

サムスン電子ジャパン株式会社

EFFICIENCY LEVEL:



N136
U21177EA

CAUTION / 警告

INDOOR USE ONLY. FOR USE WITH IT, AV EQUIPMENT ONLY.

POUR UTILISATION AVEC DU MATERIEL DE

TRAITEMENT DE L'INFORMATION SEULEMENT.

MURZUM GEBRAUCH MITT GERATEN.

SOLO PARA USO EN INTERIORES Y CON SU RESPECTIVO EQUIPO.

屋内の安全な環境下で使用すること。絶対に分解しないこと。

该设备仅用于信息技术设备及室内使用。

限用於資訊類產品及室內使用。

주의 사항

- 실내에서만 사용하시고, 어댑터를 이종으로 겹쳐서 사용하지 마십시오.
- 지정된 제품에 한하여 사용하십시오.
- 본 제품은 AC 110V와 220V에서 별도 조작없이 사용 가능합니다.
- 감전의 위험이 있으므로 분해하지 마십시오.
- 어댑터에 물이 들어가거나 젖게 하지 마십시오.
- 어댑터를 전열기 주위에 놓지 마십시오.

This device complies with part 15 of the FCC Rules.

Operation is subject to the following two conditions:

- 1) This device may not cause harmful interference, and
- 2) This device must accept any interference received, including interference that may cause undesired operation.

Manufacturer/製造商/製造商: POWERNET Technologies Corp.

Factory/生産廠/生産工場: Ilsan Elecom(shen yang) Co., Ltd

(一山电子(沈阳)有限公司)

MADE IN CHINA/FABRICADO EN CHINA/中国制造/中國製造



SEC S/N : CN07BN4400591BSK28CC2E200 REV R.A

25W

