

2. Internal Pictures

1) Front View



2) Rear View

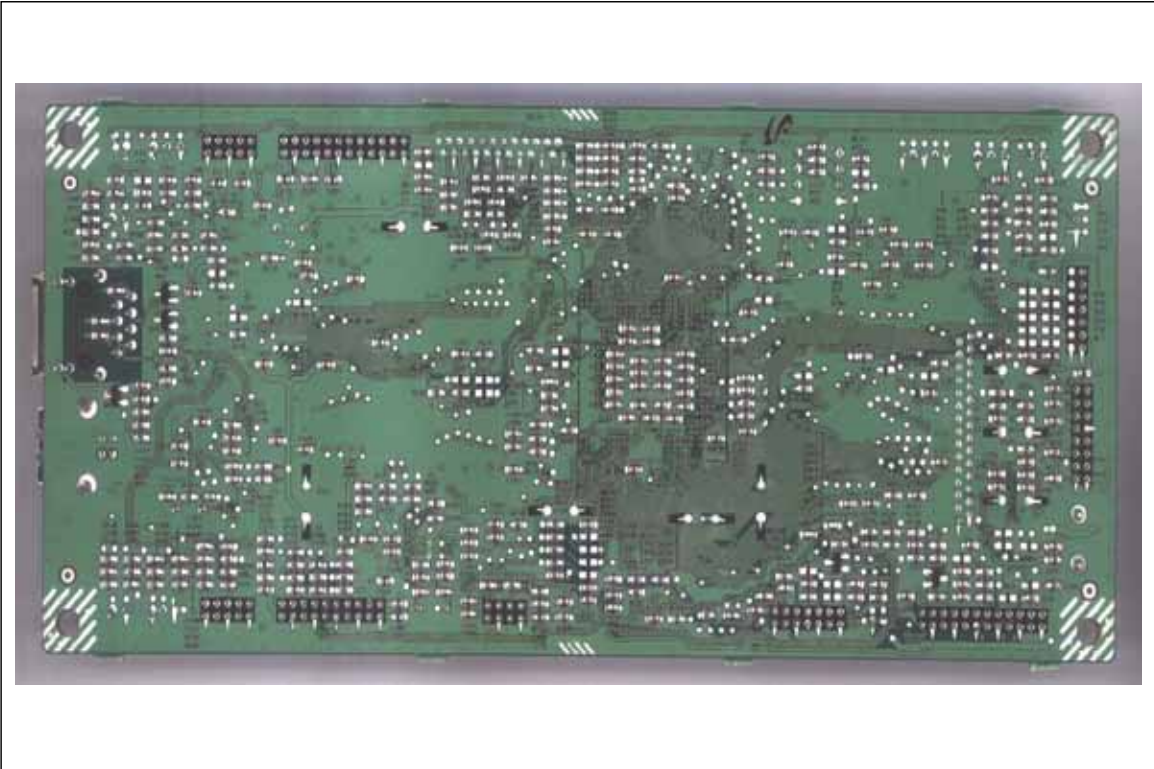


3. Print Board Assembled(PBA) Pictures

1) Top View of Main Controller



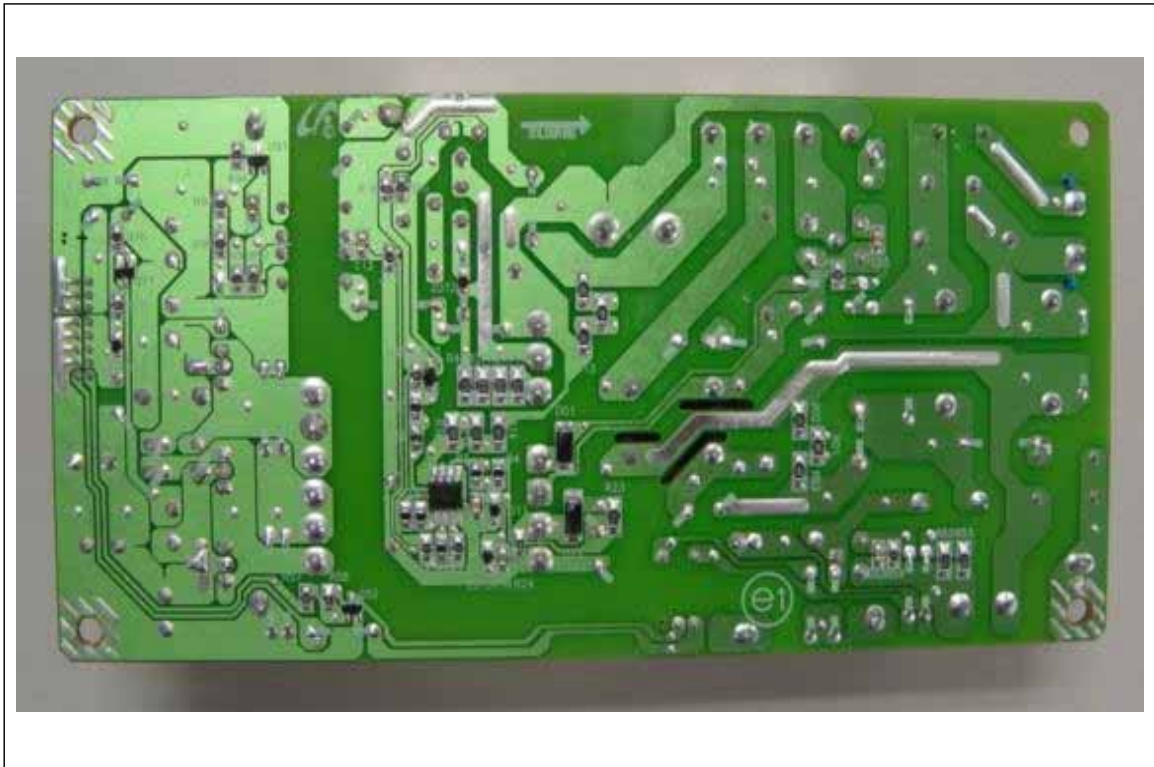
2) Bottom View of Main Controller



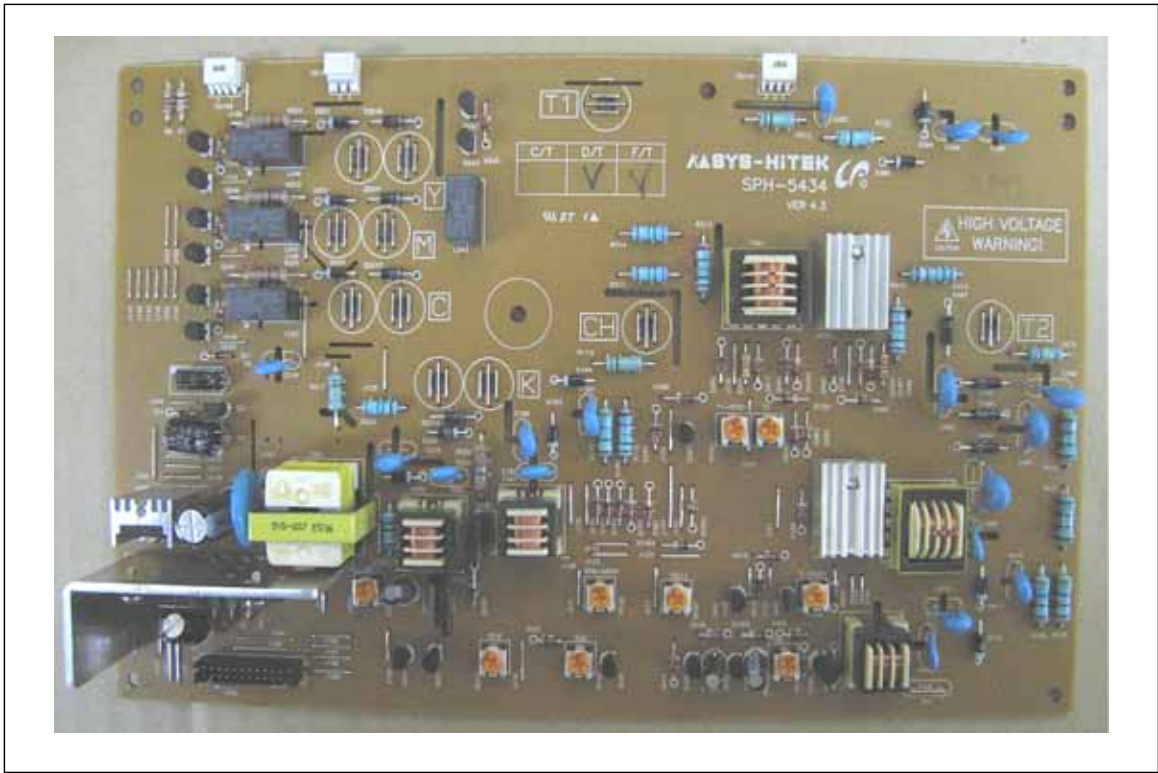
3) Top View of SMPS



4) Bottom View of SMPS



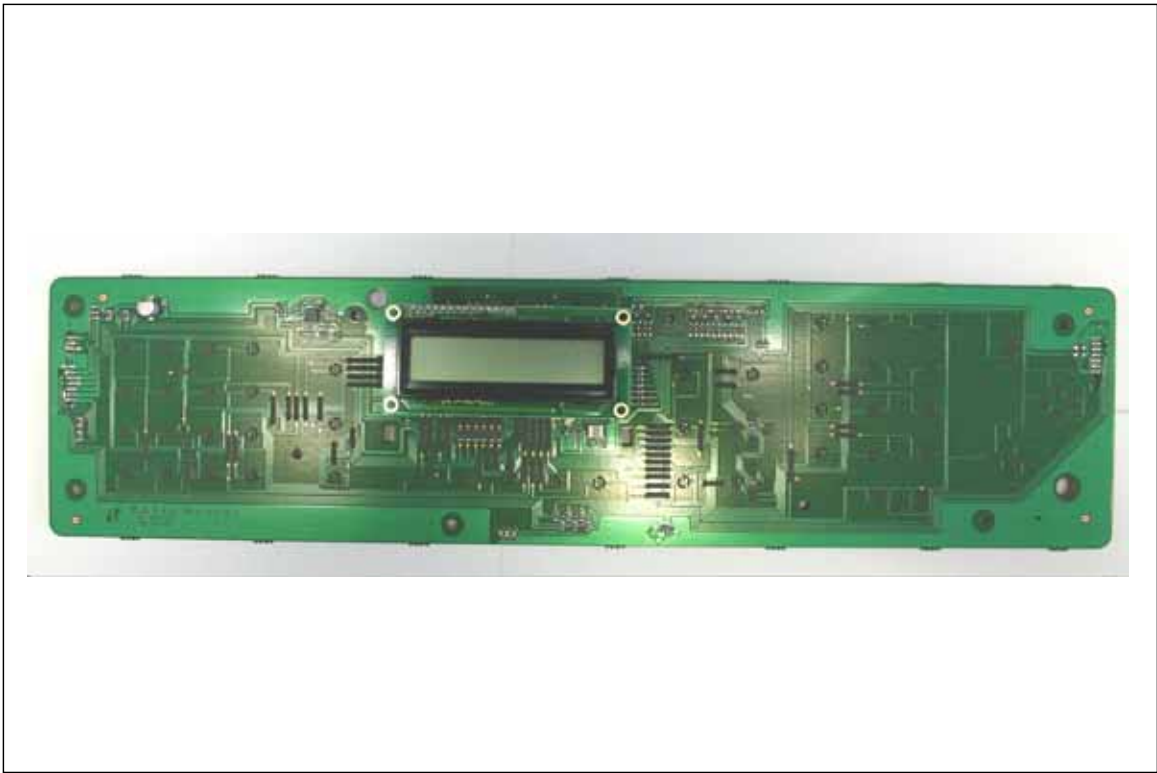
5) Top View of HVPS



6) Bottom View of HVPS



7) Top View of OPE



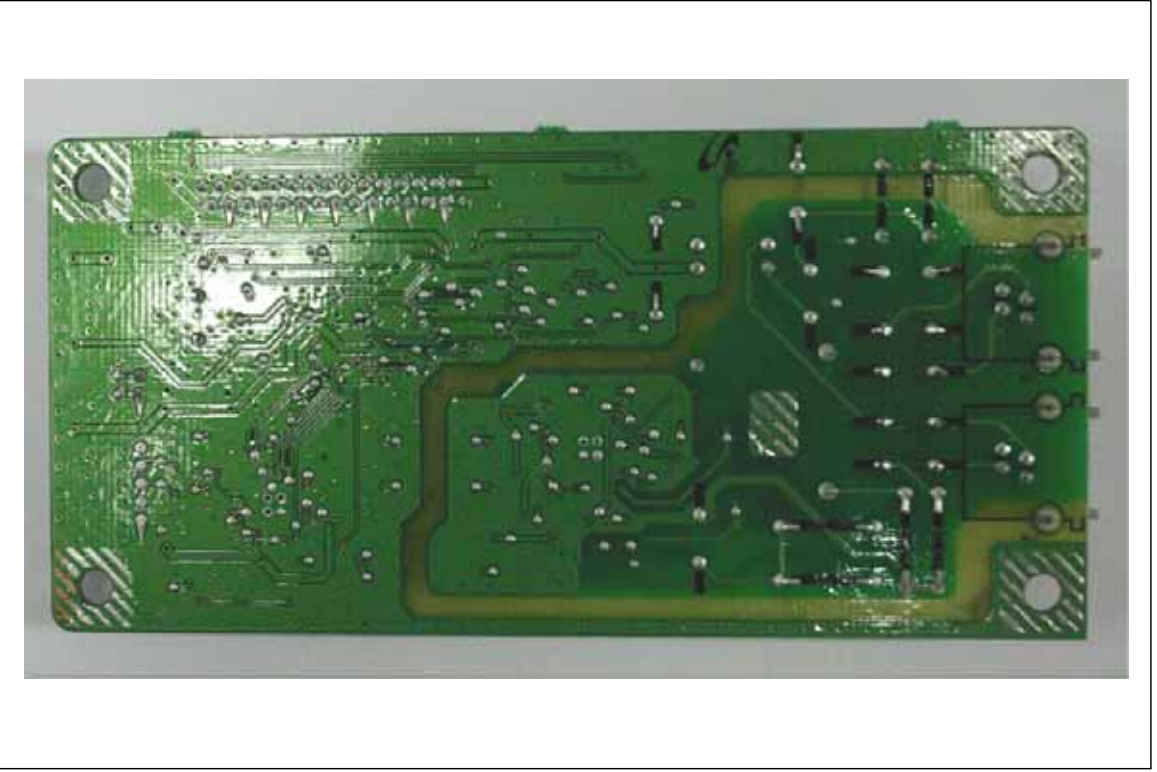
8) Bottom View of OPE



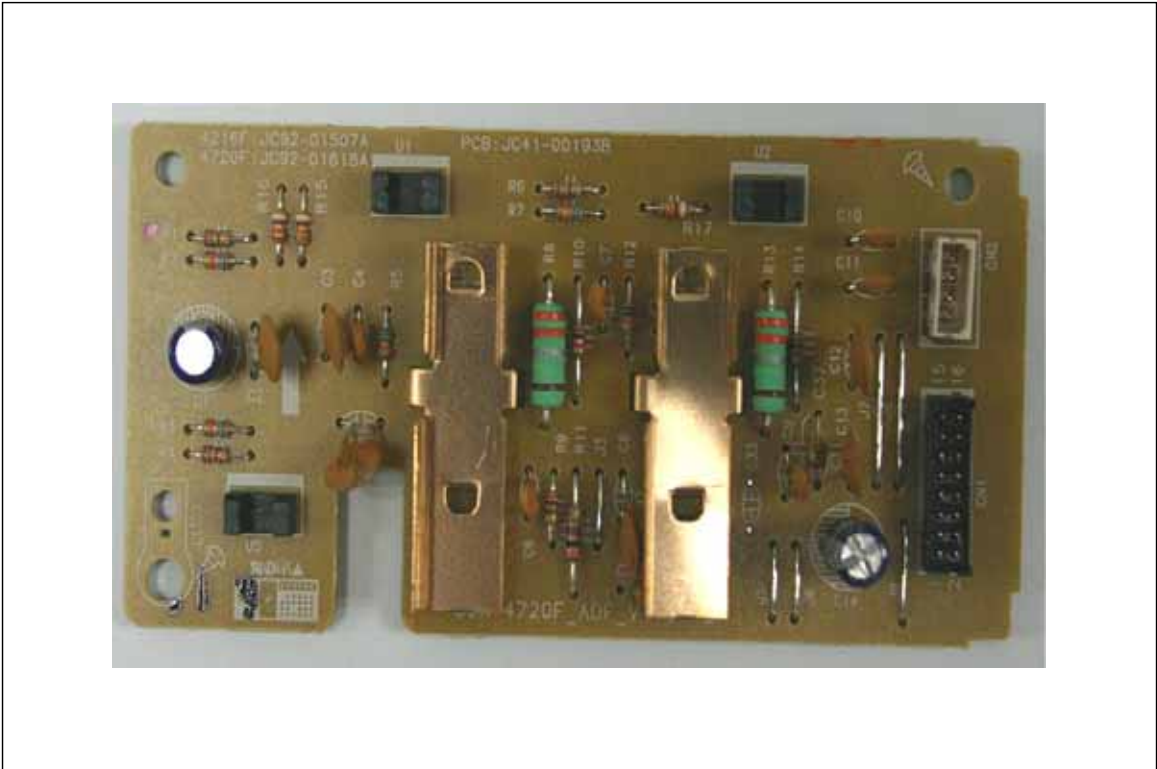
9) Top View of FAX



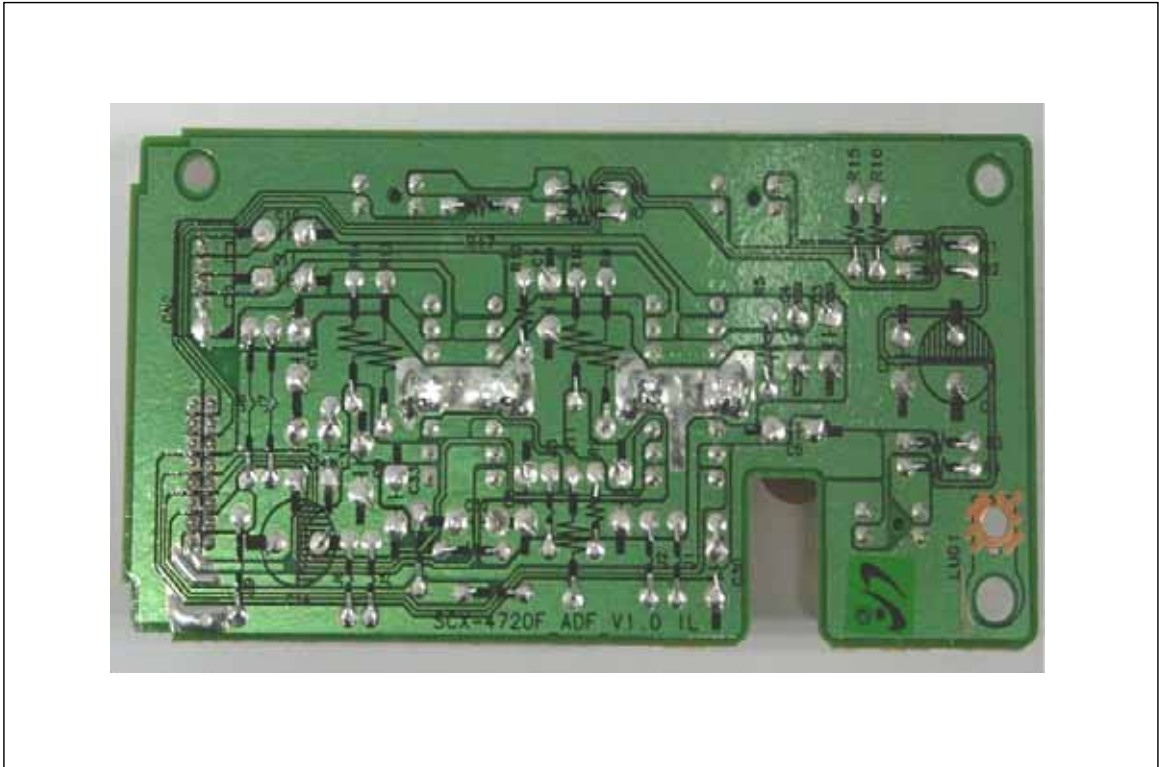
10) Bottom View of FAX



11) Top View of ADF



12) Bottom View of ADF



13) Top View of Joint B'D



14) Bottom View of Joint B'D

