



ELECTRONICS

SAMSUNG ELECTRONICS AMERICA, INC.

American QA Lab

18600 Broadwick St.

Rancho Dominguez, CA 90220

July 6, 2006

PCTEST TCB

Div. of PCTEST Engineering Lab., Inc.

6660-B Dobbin Road

Columbia, MD 21045

SUBJECT: **Samsung Electronics Co., Ltd.**
FCC ID: A3LIR31CFF
Class II Permissive Change
Orig. Grant Date: December 30, 2005

Gentlemen:

Transmitted herewith is an application for a Class II Permissive Change Certification of the Multi Function Printer.

The device is identical to the previously certified Multi Function Printer except for the following:

1. SMPS Board upgraded.
 - a. Alternate position of component AR04.
 - b. Alternate component value R14, R15, R16, F01.
 - c. Addition of component B6, B7.
2. LIU Board upgraded.
 - a. Alternate component value R43.
 - b. Addition of component C67, C68, VAR1
3. Main Board upgraded.
 - a. Alternate component value C356, C356, C350, C351, C340, C341, C342, C343.
 - b. Addition of component R255, R256, R257, R258.
4. Alternate Models: CLX-3160N, Phaser 6110MFP/XN, Phaser 6110MFP/SN
5. Alternate Trade Name: Xerox

Attached are the measurement report test data and plots, internal photographs, and test setup photographs.

Should you have any questions or comments concerning the above, please contact the undersigned.

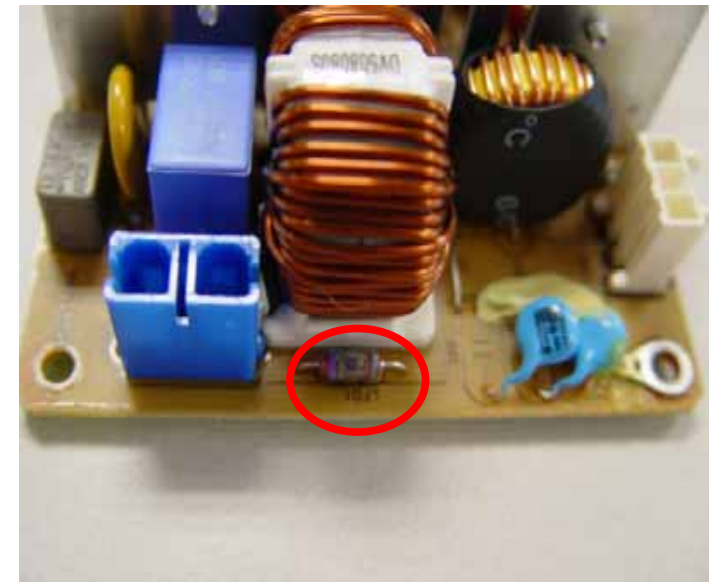
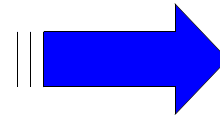
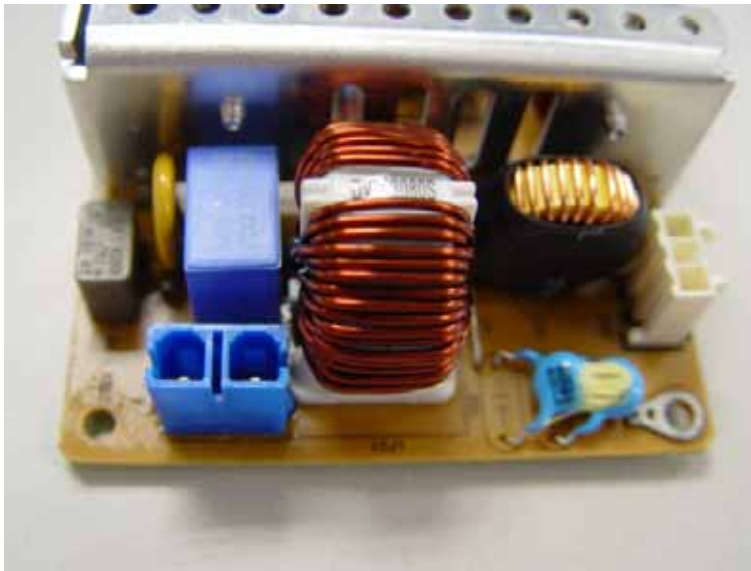
Sincerely,

Steve Kim
General Manager
American QA Lab
SAMSUNG Electronics America INC.

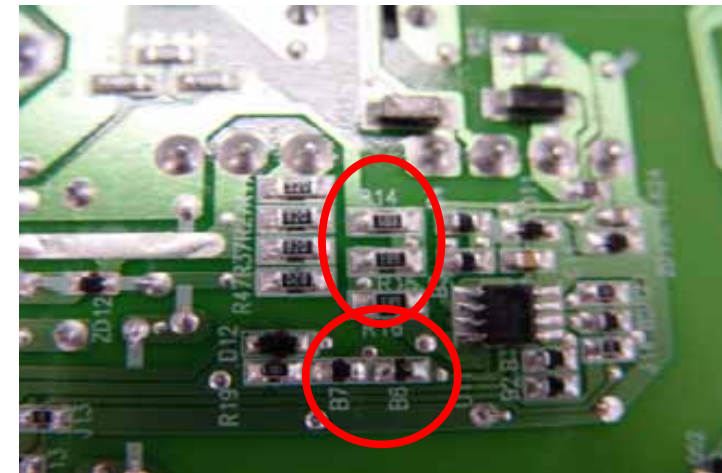
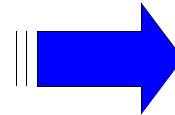
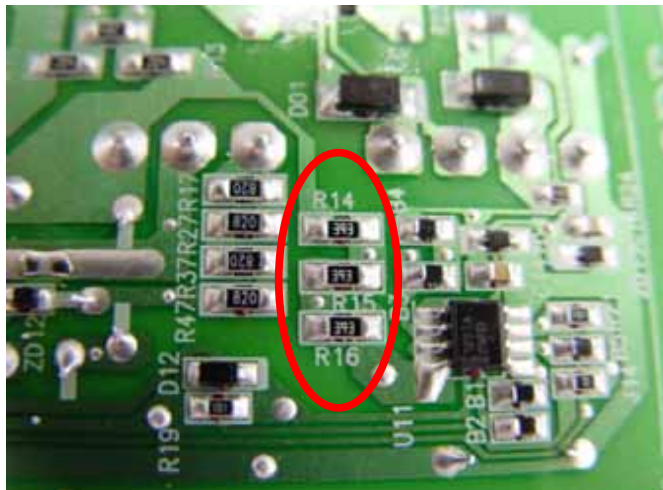
Description for Changes of A3LIR31CFF

1. SMPS

- Change position of component AR04

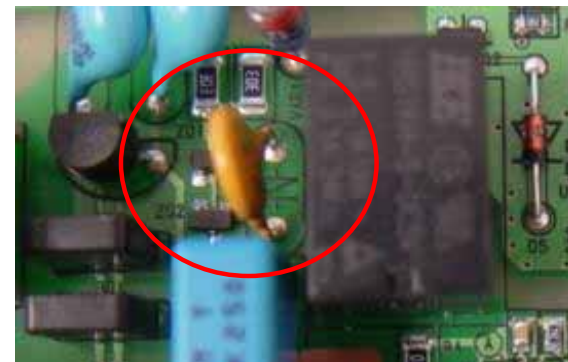
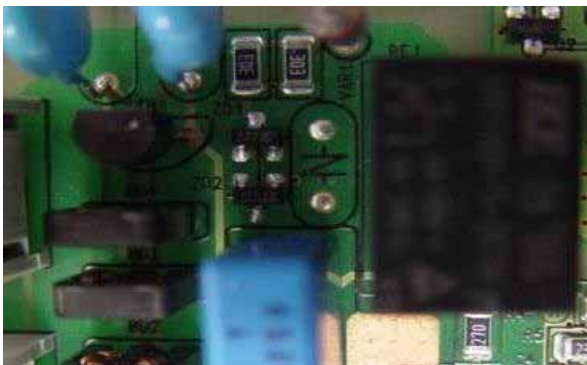
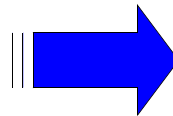
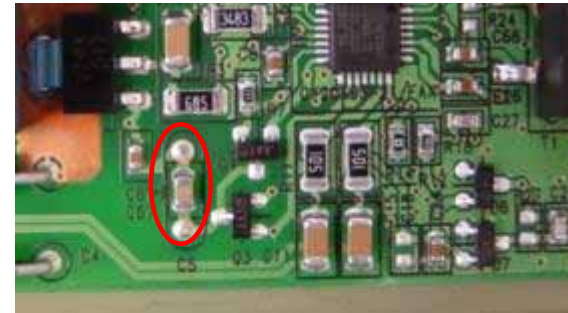
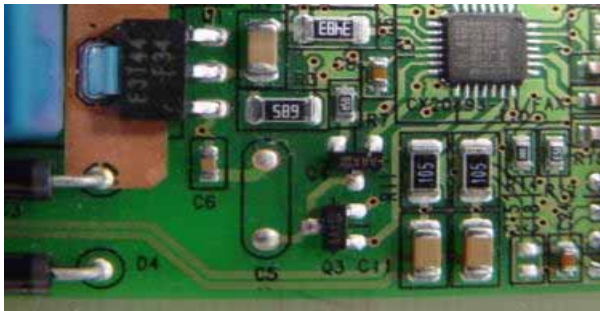


- Change component value R14,R15,R16,F01
- Add component B6,B7

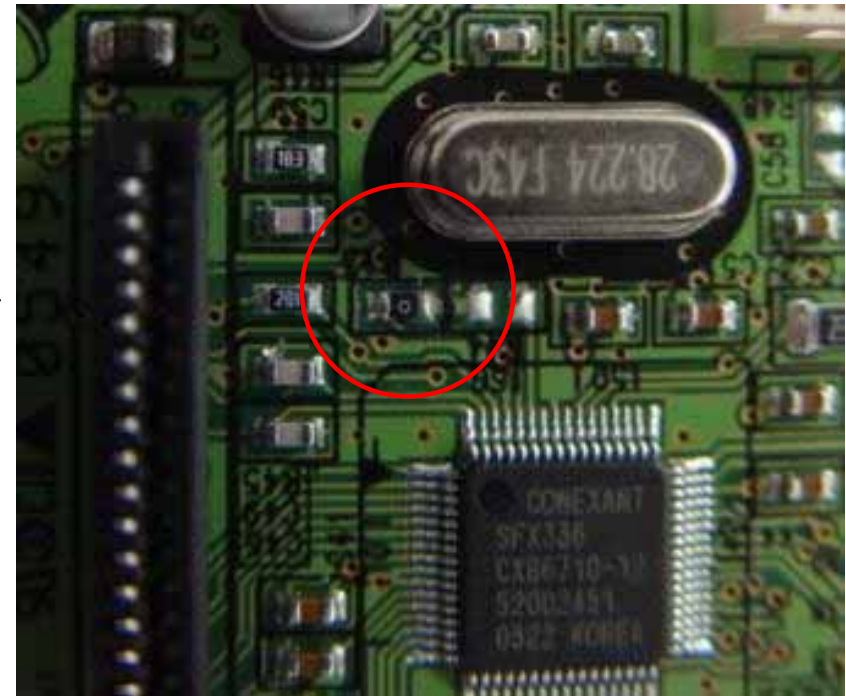
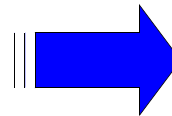
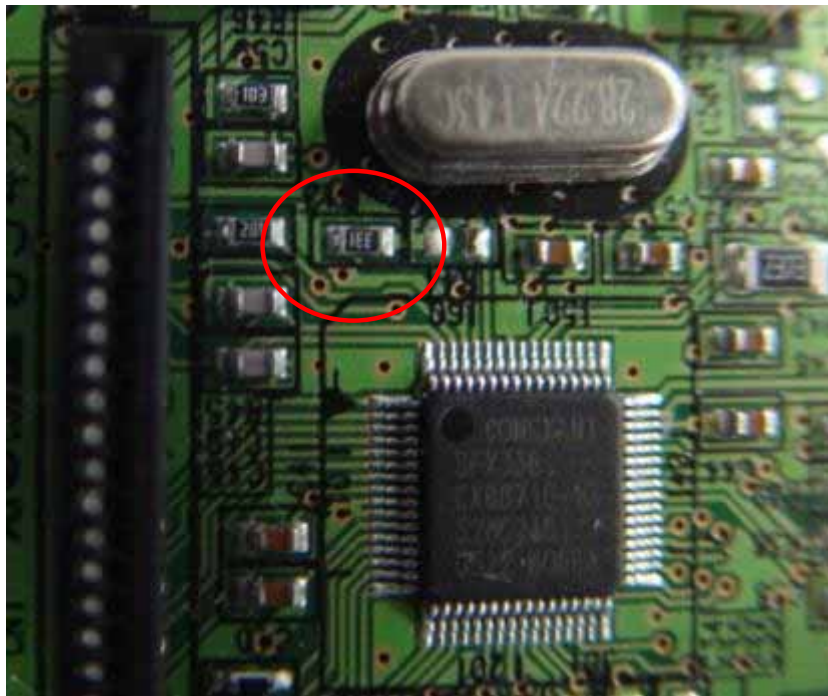


2. LIU

- Add component C67, C68, VAR1

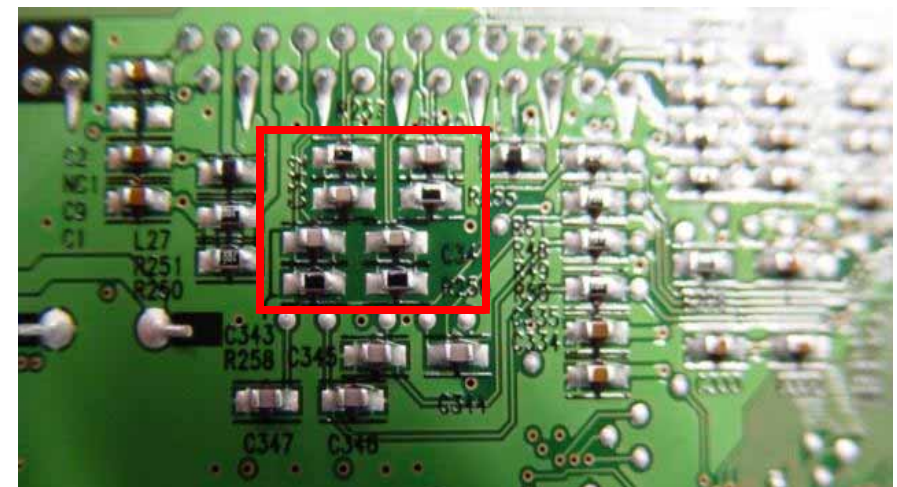
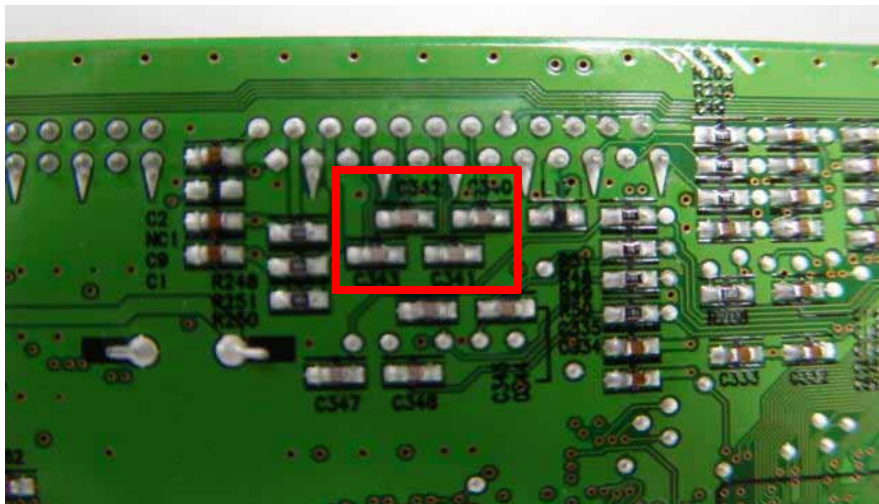
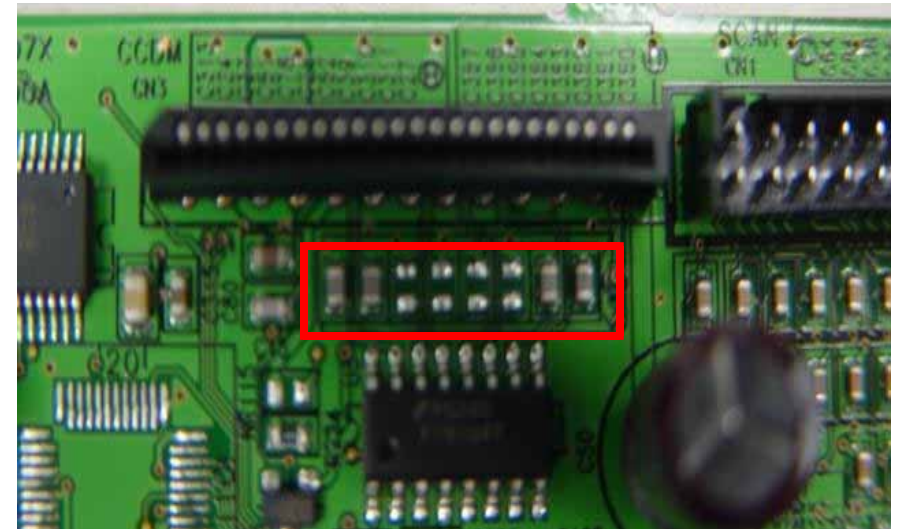
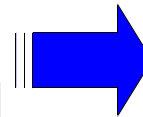
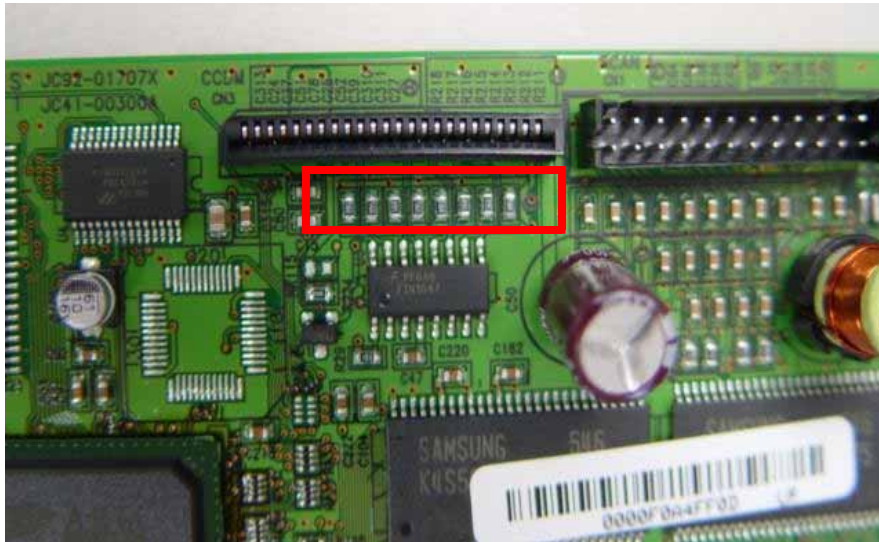


- Change component value R43



3. Main B'D

- Change component value C357,C356,C350,C351,C340,C341,C342,C343



- Add component R255, R256, R257, R258

