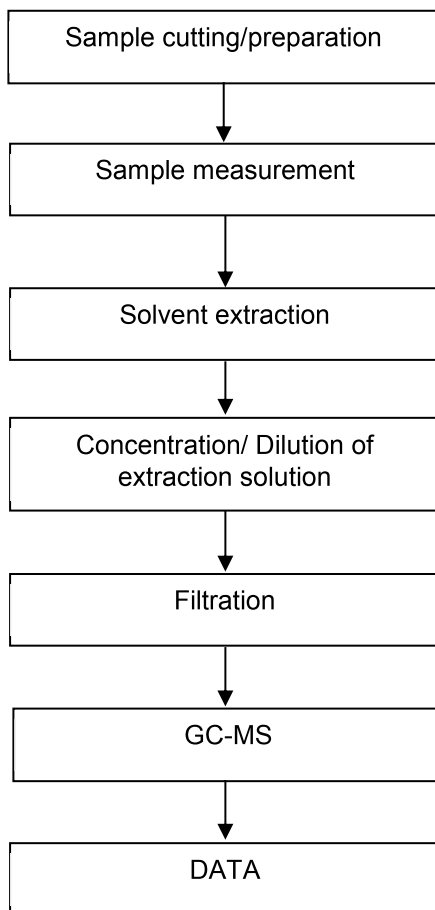


PBBs/PBDEs Testing Flow Chart

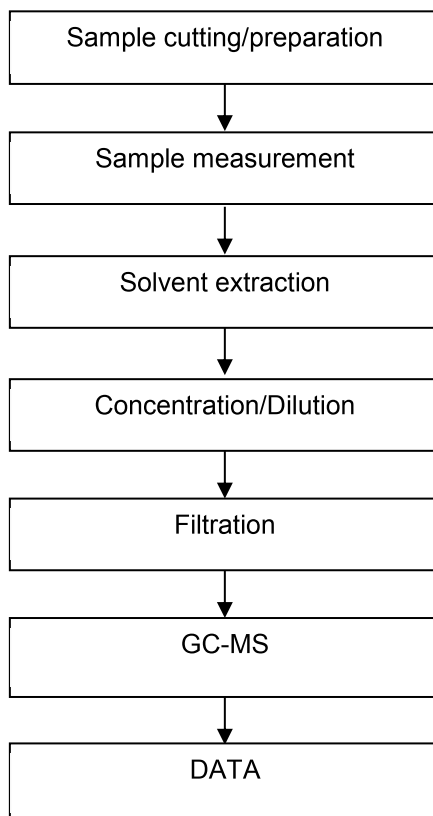


Unless otherwise agreed in writing, this document is issued by the Company subject to its General Conditions of Service printed overleaf, available on request or accessible at <http://www.sgs.com/en/Terms-and-Conditions.aspx> and, for electronic format documents, subject to Terms and Conditions for Electronic Documents at <http://www.sgs.com/en/Terms-and-Conditions/Terms-e-Documents.aspx>. Attention is drawn to the limitation of liability, indemnification and jurisdiction issues defined therein. Any holder of this document is advised that information contained hereon reflects the Company's findings at the time of its intervention only and within the limits of Client's instructions, if any. The Company's sole responsibility is to its Client and this document does not exonerate parties to a transaction from exercising all their rights and obligations under the transaction documents. This document cannot be reproduced except in full, without prior written approval of the Company. Any unauthorized alteration, forgery or falsification of the content or appearance of this document is unlawful and offenders may be prosecuted to the fullest extent of the law. Unless otherwise stated the results shown in this test report refer only to the sample(s) tested.

Attention: To check the authenticity of testing / inspection report & certificate, please contact us at telephone: (86-755) 8307 1443, or email: CN.Doccheck@sgs.com

SGS-CSTC (Shanghai) Co., Ltd. 3rd Building, No. 889 Yishan Road Xuhui District, Shanghai China 200233 t E&E (86-21) 61402553 f E&E (86-21) 64953679 www.sgsgroup.com.cn
中国·上海·徐汇区宜山路889号3号楼 邮编: 200233 t HL (86-21) 61402594 f HL (86-21) 61156899 e sgs.china@sgs.com

Phthalates Testing Flow Chart



Unless otherwise agreed in writing, this document is issued by the Company subject to its General Conditions of Service printed overleaf, available on request or accessible at <http://www.sgs.com/en/Terms-and-Conditions.aspx> and, for electronic format documents, subject to Terms and Conditions for Electronic Documents at <http://www.sgs.com/en/Terms-and-Conditions/Terms-e-Documents.aspx>. Attention is drawn to the limitation of liability, indemnification and jurisdiction issues defined therein. Any holder of this document is advised that information contained hereon reflects the Company's findings at the time of its intervention only and within the limits of Client's instructions, if any. The Company's sole responsibility is to its Client and this document does not exonerate parties to a transaction from exercising all their rights and obligations under the transaction documents. This document cannot be reproduced except in full, without prior written approval of the Company. Any unauthorized alteration, forgery or falsification of the content or appearance of this document is unlawful and offenders may be prosecuted to the fullest extent of the law. Unless otherwise stated the results shown in this test report refer only to the sample(s) tested.

Attention: To check the authenticity of testing / inspection report & certificate, please contact us at telephone: (86-755) 8307 1443, or email: CN.Doccheck@sgs.com

SGS-CSTC (Shanghai) Technical Services Co., Ltd. 3rd Building, No. 889 Yishan Road Xuhui District, Shanghai China 200233 t E&E (86-21) 61402553 f E&E (86-21) 64953679 www.sgsgroup.com.cn
中国·上海·徐汇区宜山路889号3号楼 邮编: 200233 t HL (86-21) 61402594 f HL (86-21) 61156899 e sgs.china@sgs.com

Sample Photo:



SGS authenticate the photo on original report only
*** End of Report ***



Unless otherwise agreed in writing, this document is issued by the Company subject to its General Conditions of Service printed overleaf, available on request or accessible at <http://www.sgs.com/en/Terms-and-Conditions.aspx> and, for electronic format documents, subject to Terms and Conditions for Electronic Documents at <http://www.sgs.com/en/Terms-and-Conditions/Terms-e-Documents.aspx>. Attention is drawn to the limitation of liability, indemnification and jurisdiction issues defined therein. Any holder of this document is advised that information contained hereon reflects the Company's findings at the time of its intervention only and within the limits of Client's instructions, if any. The Company's sole responsibility is to its Client and this document does not exonerate parties to a transaction from exercising all their rights and obligations under the transaction documents. This document cannot be reproduced except in full, without prior written approval of the Company. Any unauthorized alteration, forgery or falsification of the content or appearance of this document is unlawful and offenders may be prosecuted to the fullest extent of the law. Unless otherwise stated the results shown in this test report refer only to the sample(s) tested.

Attention: To check the authenticity of testing / inspection report & certificate, please contact us at telephone: (86-755) 8307 1443, or email: CN.Doccheck@sgs.com

3rd Building, No. 889 Yishan Road Xuhui District, Shanghai China 200233 t E&E (86-21) 61402553 f E&E (86-21) 64953679 www.sgsgroup.com.cn
中国·上海·徐汇区宜山路889号3号楼 邮编: 200233 t HL (86-21) 61402594 f HL (86-21) 61156899 e sgs.china@sgs.com

Test Report

No.: SHAEC23002162901

Date: Mar 09, 2023

Page 1 of 8

Client Name: COLORANT CHROMATICS TRADING(SHANGHAI)CO.,LTD

Client Address: 2F,BLOCK C,VI-HUB@JINQIAO,200 JINSU ROAD,PUDONG,SHANGHAI

Sample Name: FEP Colormasterbatch

Client Ref. Information: 100.00/102.00/103.00/108.00/113.00/142.00/143.00/152.00/153.00/158.00/190.00/192.00/193.00/198.00/S203.0/S243.0/S245.0/STR1625/STR1962

Lot No.: 7167477

The above sample(s) and information were provided by the client.

SGS Job No.: SP23-005674

Sample Receiving Date: Mar 03, 2023

Testing Period: Mar 03, 2023 ~ Mar 09, 2023

Test Requested: Select test(s) as requested by the client.

Test Method(s): Please refer to next page(s).

Test Result(s): Please refer to next page(s).

Test Requirement	Conclusion
EU RoHS Directive (EU) 2015/863 amending Annex II to Directive 2011/65/EU- Lead, Mercury, Cadmium, Hexavalent chromium, Polybrominated biphenyls (PBBs), Polybrominated diphenyl ethers (PBDEs), Bis(2-ethylhexyl) phthalate (DEHP), Butyl benzyl phthalate (BBP), Dibutyl phthalate (DBP) and Diisobutyl phthalate (DIBP)	Pass

Signed for and on behalf of
SGS-CSTC Standards Technical Services (Shanghai) Co., Ltd.



Jenny Lan
Approved Signatory



Unless otherwise agreed in writing, this document is issued by the Company subject to its General Conditions of Service printed overleaf, available on request or accessible at <http://www.sgs.com/en/Terms-and-Conditions.aspx> and, for electronic format documents, subject to Terms and Conditions for Electronic Documents at <http://www.sgs.com/en/Terms-and-Conditions/Terms-e-Documents.aspx>. Attention is drawn to the limitation of liability, indemnification and jurisdiction issues defined therein. Any holder of this document is advised that information contained hereon reflects the Company's findings at the time of its intervention only and within the limits of Client's instructions, if any. The Company's sole responsibility is to its Client and this document does not exonerate parties to a transaction from exercising all their rights and obligations under the transaction documents. This document cannot be reproduced except in full, without prior written approval of the Company. Any unauthorized alteration, forgery or falsification of the content or appearance of this document is unlawful and offenders may be prosecuted to the fullest extent of the law. Unless otherwise stated the results shown in this test report refer only to the sample(s) tested.

Attention: To check the authenticity of testing /inspection report & certificate, please contact us at telephone: (86-755) 8307 1443, or email: CN.Doccheck@sgs.com

3rd Building, No.889 Yishan Road Xuhui District, Shanghai China 200233 t E&E (86-21) 61402553 f E&E (86-21) 64953679 www.sgsgroup.com.cn
中国·上海·徐汇区宜山路889号3号楼 邮编: 200233 t HL (86-21) 61402594 f HL (86-21) 61156899 e sgs.china@sgs.com

Test Result(s):

Test Part Description:

SN ID	Sample No.	SGS Sample ID	Description
SN1	A1	SHA23-0021629-0001.C001	Black solid pellet

Remarks:

- (1) 1 mg/kg = 1 ppm = 0.0001%
- (2) MDL = Method Detection Limit
- (3) ND = Not Detected (< MDL)
- (4) “-” = Not Regulated

EU RoHS Directive (EU) 2015/863 amending Annex II to Directive 2011/65/EU- Lead, Mercury, Cadmium, Hexavalent chromium, Polybrominated biphenyls (PBBs), Polybrominated diphenyl ethers (PBDEs), Bis(2-ethylhexyl) phthalate (DEHP), Butyl benzyl phthalate (BBP), Dibutyl phthalate (DBP) and Diisobutyl phthalate (DIBP)

Test Method: With reference to IEC 62321-4:2013+AMD1:2017, IEC 62321-5:2013, IEC 62321-7-2:2017, IEC 62321-6:2015 and IEC 62321-8:2017, analysis was performed by ICP-OES, UV-Vis and GC-MS.

Test Item(s)	Limit	Unit(s)	MDL	A1
Cadmium(Cd)	100	mg/kg	2	ND
Lead (Pb)	1000	mg/kg	2	ND
Mercury (Hg)	1000	mg/kg	2	ND
Hexavalent Chromium (Cr(VI))	1000	mg/kg	8	ND
Polybromobiphenyl (PBBs)	1000	mg/kg	-	ND
Monobromobiphenyl (MonoBB)	-	mg/kg	5	ND
Dibromobiphenyl (DiBB)	-	mg/kg	5	ND
Tribromobiphenyl (TriBB)	-	mg/kg	5	ND
Tetrabromobiphenyl (TetraBB)	-	mg/kg	5	ND
Pentabromobiphenyl (PentaBB)	-	mg/kg	5	ND
Hexabromobiphenyl (HexaBB)	-	mg/kg	5	ND
Heptabromobiphenyl (HeptaBB)	-	mg/kg	5	ND
Octabromobiphenyl (OctaBB)	-	mg/kg	5	ND
Nonabromobiphenyl (NonaBB)	-	mg/kg	5	ND
Decabromobiphenyl (DecaBB)	-	mg/kg	5	ND
Polybromodiphenyl ether(PBDEs)	1000	mg/kg	-	ND
Monobromodiphenylether (MonoBDE)	-	mg/kg	5	ND
Dibromodiphenylether (DiBDE)	-	mg/kg	5	ND
Tribromodiphenylether (TriBDE)	-	mg/kg	5	ND
Tetrabromodiphenylether (TetraBDE)	-	mg/kg	5	ND
Pentabromodiphenylether (PentaBDE)	-	mg/kg	5	ND
Hexabromodiphenylether (HexaBDE)	-	mg/kg	5	ND
Heptabromodiphenylether (HeptaBDE)	-	mg/kg	5	ND
Octabromodiphenylether (OctaBDE)	-	mg/kg	5	ND
Nonabromodiphenylether (NonaBDE)	-	mg/kg	5	ND
Decabromodiphenylether (DecaBDE)	-	mg/kg	5	ND
Dibutyl Phthalate(DBP)	1000	mg/kg	50	ND
Benzyl Butyl Phthalate(BBP)	1000	mg/kg	50	ND



Unless otherwise agreed in writing, this document is issued by the Company subject to its General Conditions of Service printed overleaf, available on request or accessible at <http://www.sgs.com/en/Terms-and-Conditions.aspx> and, for electronic format documents, subject to Terms and Conditions for Electronic Documents at <http://www.sgs.com/en/Terms-and-Conditions/Terms-e-Documents.aspx>. Attention is drawn to the limitation of liability, indemnification and jurisdiction issues defined therein. Any holder of this document is advised that information contained hereon reflects the Company's findings at the time of its intervention only and within the limits of Client's instructions, if any. The Company's sole responsibility is to its Client and this document does not exonerate parties to a transaction from exercising all their rights and obligations under the transaction documents. This document cannot be reproduced except in full, without prior written approval of the Company. Any unauthorized alteration, forgery or falsification of the content or appearance of this document is unlawful and offenders may be prosecuted to the fullest extent of the law. Unless otherwise stated the results shown in this test report refer only to the sample(s) tested.

Attention: To check the authenticity of testing / inspection report & certificate, please contact us at telephone: (86-755) 8307 1443, or email: CN.Doccheck@sgs.com

3rd Building, No. 889 Yishan Road Xuhui District, Shanghai China 200233 t E&E (86-21) 61402553 f E&E (86-21) 64953679 www.sgsgroup.com.cn
 中国·上海·徐汇区宜山路889号3号楼 邮编: 200233 t HL (86-21) 61402594 f HL (86-21) 61156899 e sgs.china@sgs.com

Test Report

No.: SHAEC23002162901

Date: Mar 09, 2023

Page 3 of 8

Test Item(s)	Limit	Unit(s)	MDL	A1
Bis-(2-ethylhexyl) Phthalate(DEHP)	1000	mg/kg	50	ND
Diisobutyl Phthalate(DIBP)	1000	mg/kg	50	ND

Notes:

- (1) The maximum permissible limit is quoted from RoHS Directive (EU) 2015/863.
- (2) IEC 62321 series is equivalent to EN 62321 series.
- (3) The restriction of DEHP, BBP, DBP and DIBP shall apply to medical devices, including in vitro medical devices, and monitoring and control instruments, including industrial monitoring and control instruments, from 22 July 2021.

Unless otherwise stated, the decision rule for conformity reporting is based on Binary Statement for Simple Acceptance Rule (w=0) stated in ILAC-G8:09/2019.

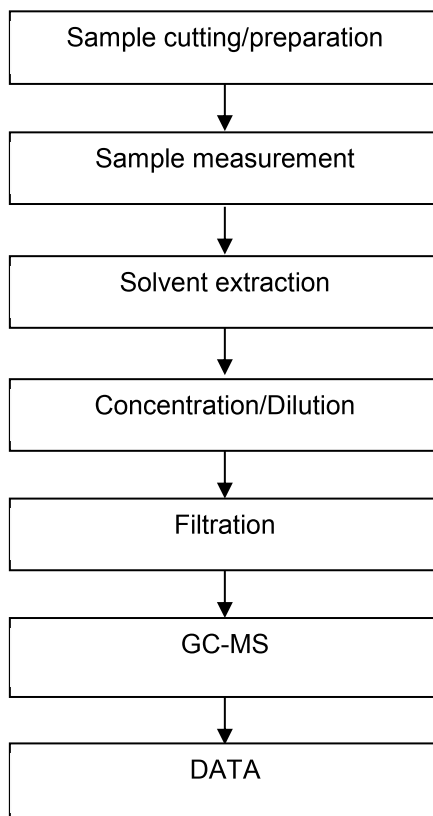


Unless otherwise agreed in writing, this document is issued by the Company subject to its General Conditions of Service printed overleaf, available on request or accessible at <http://www.sgs.com/en/Terms-and-Conditions.aspx> and, for electronic format documents, subject to Terms and Conditions for Electronic Documents at <http://www.sgs.com/en/Terms-and-Conditions/Terms-e-Documents.aspx>. Attention is drawn to the limitation of liability, indemnification and jurisdiction issues defined therein. Any holder of this document is advised that information contained hereon reflects the Company's findings at the time of its intervention only and within the limits of Client's instructions, if any. The Company's sole responsibility is to its Client and this document does not exonerate parties to a transaction from exercising all their rights and obligations under the transaction documents. This document cannot be reproduced except in full, without prior written approval of the Company. Any unauthorized alteration, forgery or falsification of the content or appearance of this document is unlawful and offenders may be prosecuted to the fullest extent of the law. Unless otherwise stated the results shown in this test report refer only to the sample(s) tested.

Attention: To check the authenticity of testing / inspection report & certificate, please contact us at telephone: (86-755) 8307 1443, or email: CN.Doccheck@sgs.com

SGS-CSTC Shanghai Technical Services Co., Ltd. 3rd Building, No. 889 Yishan Road Xuhui District, Shanghai China 200233 t E&E (86-21) 61402553 f E&E (86-21) 64953679 www.sgsgroup.com.cn
 中国·上海·徐汇区宜山路889号3号楼 邮编: 200233 t HL (86-21) 61402594 f HL (86-21) 61156899 e sgs.china@sgs.com

Phthalates Testing Flow Chart

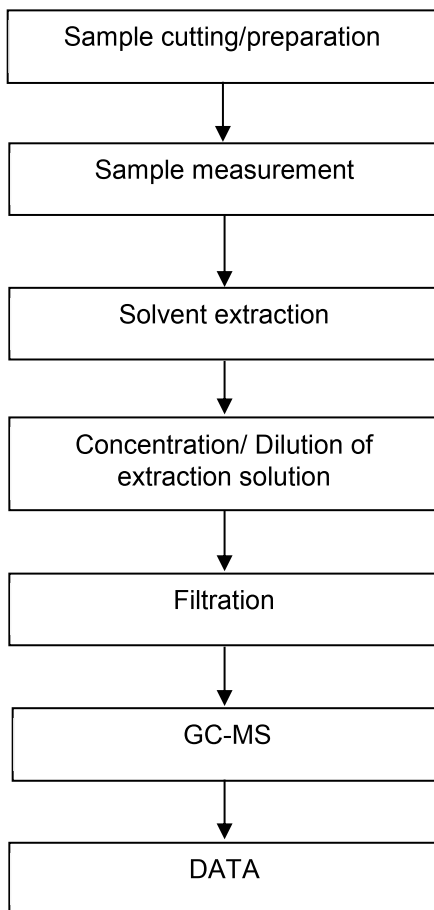


Unless otherwise agreed in writing, this document is issued by the Company subject to its General Conditions of Service printed overleaf, available on request or accessible at <http://www.sgs.com/en/Terms-and-Conditions.aspx> and, for electronic format documents, subject to Terms and Conditions for Electronic Documents at <http://www.sgs.com/en/Terms-and-Conditions/Terms-e-Documents.aspx>. Attention is drawn to the limitation of liability, indemnification and jurisdiction issues defined therein. Any holder of this document is advised that information contained hereon reflects the Company's findings at the time of its intervention only and within the limits of Client's instructions, if any. The Company's sole responsibility is to its Client and this document does not exonerate parties to a transaction from exercising all their rights and obligations under the transaction documents. This document cannot be reproduced except in full, without prior written approval of the Company. Any unauthorized alteration, forgery or falsification of the content or appearance of this document is unlawful and offenders may be prosecuted to the fullest extent of the law. Unless otherwise stated the results shown in this test report refer only to the sample(s) tested.

Attention: To check the authenticity of testing / inspection report & certificate, please contact us at telephone: (86-755) 8307 1443, or email: CN.Doccheck@sgs.com

SGS-CSTC (Shanghai) Technical Services Co., Ltd. 3rd Building, No. 889 Yishan Road Xuhui District, Shanghai China 200233 t E&E (86-21) 61402553 f E&E (86-21) 64953679 www.sgsgroup.com.cn
中国·上海·徐汇区宜山路889号3号楼 邮编: 200233 t HL (86-21) 61402594 f HL (86-21) 61156899 e sgs.china@sgs.com

PBBs/PBDEs Testing Flow Chart



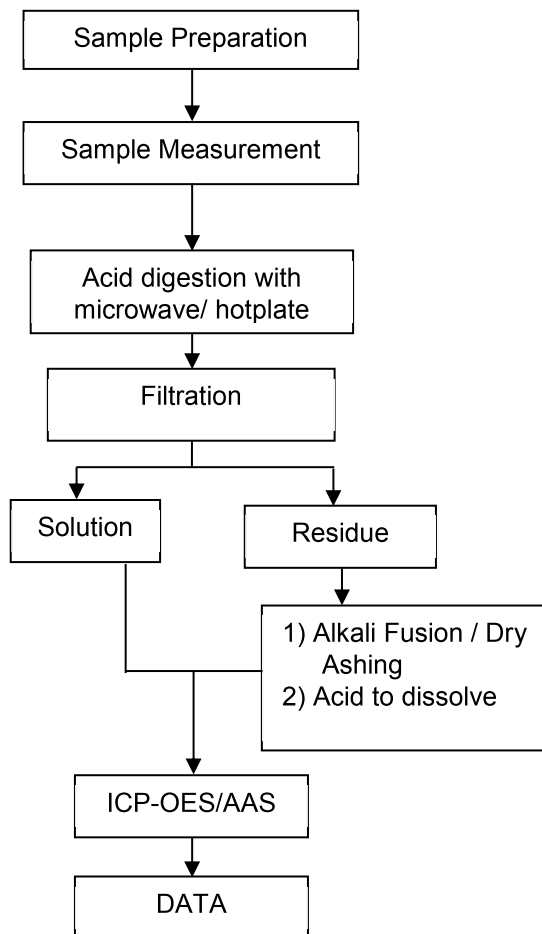
Unless otherwise agreed in writing, this document is issued by the Company subject to its General Conditions of Service printed overleaf, available on request or accessible at <http://www.sgs.com/en/Terms-and-Conditions.aspx> and, for electronic format documents, subject to Terms and Conditions for Electronic Documents at <http://www.sgs.com/en/Terms-and-Conditions/Terms-e-Documents.aspx>. Attention is drawn to the limitation of liability, indemnification and jurisdiction issues defined therein. Any holder of this document is advised that information contained hereon reflects the Company's findings at the time of its intervention only and within the limits of Client's instructions, if any. The Company's sole responsibility is to its Client and this document does not exonerate parties to a transaction from exercising all their rights and obligations under the transaction documents. This document cannot be reproduced except in full, without prior written approval of the Company. Any unauthorized alteration, forgery or falsification of the content or appearance of this document is unlawful and offenders may be prosecuted to the fullest extent of the law. Unless otherwise stated the results shown in this test report refer only to the sample(s) tested.

Attention: To check the authenticity of testing / inspection report & certificate, please contact us at telephone: (86-755) 8307 1443, or email: CN.Doccheck@sgs.com

3rd Building, No. 889 Yishan Road Xuhui District, Shanghai China 200233 t E&E (86-21) 61402553 f E&E (86-21) 64953679 www.sgsgroup.com.cn
 中国·上海·徐汇区宜山路889号3号楼 邮编: 200233 t HL (86-21) 61402594 f HL (86-21) 61156899 e sgs.china@sgs.com

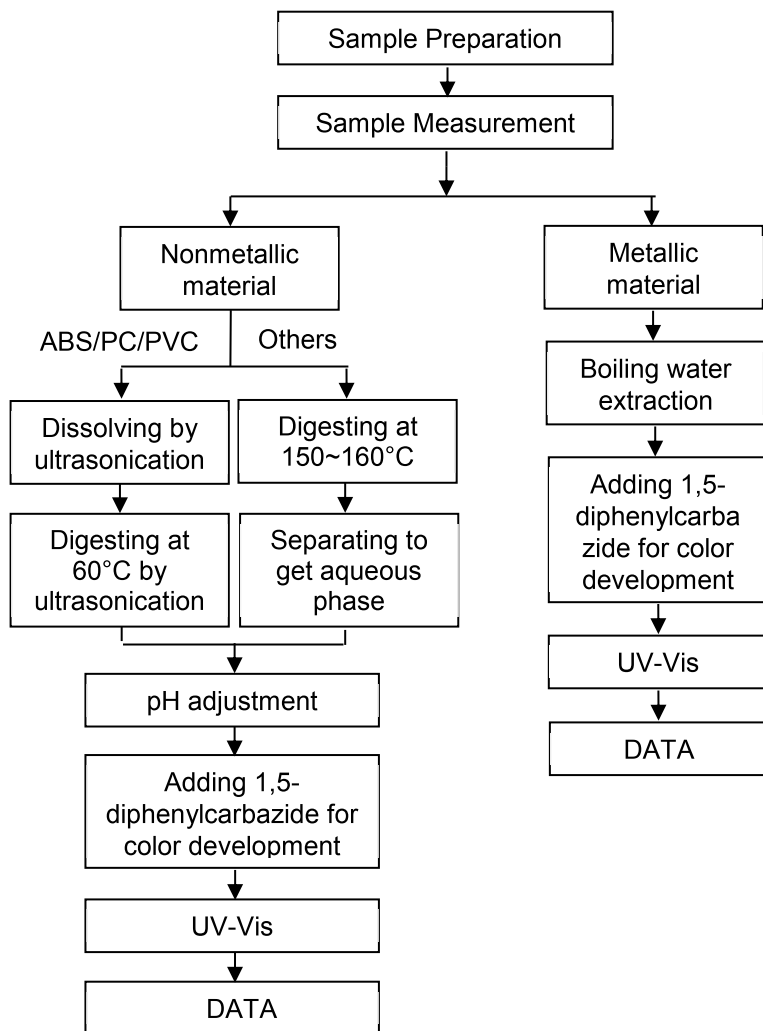
Elements (IEC62321) Testing Flow Chart

These samples were dissolved totally by pre-conditioning method according to below flow chart.



ATTACHMENTS

Hexavalent Chromium (Cr(VI)) Testing Flow Chart



Unless otherwise agreed in writing, this document is issued by the Company subject to its General Conditions of Service printed overleaf, available on request or accessible at <http://www.sgs.com/en/Terms-and-Conditions.aspx> and, for electronic format documents, subject to Terms and Conditions for Electronic Documents at <http://www.sgs.com/en/Terms-and-Conditions/Terms-e-Documents.aspx>. Attention is drawn to the limitation of liability, indemnification and jurisdiction issues defined therein. Any holder of this document is advised that information contained hereon reflects the Company's findings at the time of its intervention only and within the limits of Client's instructions, if any. The Company's sole responsibility is to its Client and this document does not exonerate parties to a transaction from exercising all their rights and obligations under the transaction documents. This document cannot be reproduced except in full, without prior written approval of the Company. Any unauthorized alteration, forgery or falsification of the content or appearance of this document is unlawful and offenders may be prosecuted to the fullest extent of the law. Unless otherwise stated the results shown in this test report refer only to the sample(s) tested.

Attention: To check the authenticity of testing / inspection report & certificate, please contact us at telephone: (86-755) 8307 1443, or email: CN.Doccheck@sgs.com

SGS CSTC (Shanghai) Technical Services Co., Ltd. 3rd Building, No. 889 Yishan Road Xuhui District, Shanghai China 200233 t E&E (86-21) 61402553 f E&E (86-21) 64953679 www.sgsgroup.com.cn
 中国·上海·徐汇区宜山路889号3号楼 邮编: 200233 t HL (86-21) 61402594 f HL (86-21) 61156899 e sgs.china@sgs.com

Sample Photo:



SGS authenticate the photo on original report only
*** End of Report ***



Unless otherwise agreed in writing, this document is issued by the Company subject to its General Conditions of Service printed overleaf, available on request or accessible at <http://www.sgs.com/en/Terms-and-Conditions.aspx> and, for electronic format documents, subject to Terms and Conditions for Electronic Documents at <http://www.sgs.com/en/Terms-and-Conditions/Terms-e-Documents.aspx>. Attention is drawn to the limitation of liability, indemnification and jurisdiction issues defined therein. Any holder of this document is advised that information contained hereon reflects the Company's findings at the time of its intervention only and within the limits of Client's instructions, if any. The Company's sole responsibility is to its Client and this document does not exonerate parties to a transaction from exercising all their rights and obligations under the transaction documents. This document cannot be reproduced except in full, without prior written approval of the Company. Any unauthorized alteration, forgery or falsification of the content or appearance of this document is unlawful and offenders may be prosecuted to the fullest extent of the law. Unless otherwise stated the results shown in this test report refer only to the sample(s) tested.

Attention: To check the authenticity of testing / inspection report & certificate, please contact us at telephone: (86-755) 8307 1443, or email: CN.Doccheck@sgs.com

3rd Building, No. 889 Yishan Road Xuhui District, Shanghai China 200233 t E&E (86-21) 61402553 f E&E (86-21) 64953679 www.sgsgroup.com.cn
中国·上海·徐汇区宜山路889号3号楼 邮编: 200233 t HL (86-21) 61402594 f HL (86-21) 61156899 e sgs.china@sgs.com

Test Report



Report No. A2230430133101008

Company Name shown on Report KUNSHAN QIANHENG SURFACE TREATMENT CO.,LTD

Address NO.2 FENGXIA ROAD,HEFENG DEVELOPMENT ZONE, LUJIA TOWN,KUNSHAN,JIANGSU PROVINCE

The following sample(s) and sample information was/were submitted and identified by/on the behalf of the applicant

Sample Name Gold coating
Sample Received Date Aug. 23, 2023
Testing Period Aug. 23, 2023 to Aug. 27, 2023

Test Requested As specified by client, to test Lead (Pb), Cadmium (Cd), Mercury (Hg), Hexavalent Chromium (Cr(VI)), Polybrominated Biphenyls (PBBs), Polybrominated Diphenyl Ethers (PBDEs), Phthalates (DBP, BBP, DEHP, DIBP), Arsenic(As), Beryllium(Be), Antimony(Sb), Fluorine (F), Chlorine (Cl), Bromine (Br), Iodine (I), Perfluorooctane Sulfonates(PFOS) in the submitted sample(s).

Test Method Please refer to the following page(s).

Test Result(s) Please refer to the following page(s).

Conclusion

Tested Sample	According to standard/directive	Result
Submitted Sample	RoHS Directive 2011/65/EU with amendment (EU) 2015/863	PASS

PASS means that the results shown on the report comply with the limits set by RoHS Directive 2011/65/EU with amendment (EU) 2015/863.



Approved by

Chen Kaimin

Chen kaimin
Lab Manager

Date

Aug. 27, 2023

No. R268851113

No.1351, Wanfang Road, Minhang District, Shanghai, China

Test Report

Report No. A2230430133101008

Page 2 of 7

Test Method

Test Item(s)	Test Method	Measured Equipment(s)
Lead (Pb)	Refer to IEC 62321-5:2013	ICP-OES
Cadmium (Cd)	Refer to IEC 62321-5:2013	ICP-OES
Mercury (Hg)	Refer to IEC 62321-4:2013+AMD1:2017 CSV	ICP-OES
Hexavalent Chromium (Cr(VI))	IEC 62321-7-1:2015	UV-Vis
Polybrominated Biphenyls (PBBs)	IEC 62321-6:2015	GC-MS
Polybrominated Diphenyl Ethers (PBDEs)	IEC 62321-6:2015	GC-MS
Phthalates (DBP, BBP, DEHP, DIBP)	IEC 62321-8:2017	GC-MS
Arsenic(As)	Refer to US EPA 3050B:1996 & US EPA 6010D:2018*	ICP-OES
Beryllium(Be)	Refer to US EPA 3050B:1996 & US EPA 6010D:2018*	ICP-OES
Antimony(Sb)	Refer to US EPA 3050B:1996 & US EPA 6010D:2018*	ICP-OES
Fluorine (F)	Refer to EN 14582:2016*	IC
Chlorine (Cl)	Refer to EN 14582:2016*	IC
Bromine (Br)	Refer to EN 14582:2016*	IC
Iodine (I)	Refer to EN 14582:2016*	IC
Perfluorooctane Sulfonates(PFOS)	Refer to US EPA 3550C:2007 & US EPA 8321B:2007*	LC-MS-MS/LC-MS

Test Report

Report No. A2230430133101008

Page 3 of 7

Test Result(s)

Tested Item(s)	Result	MDL	Limit
	008		
Lead (Pb)	N.D.	2 mg/kg	1000 mg/kg
Cadmium (Cd)	N.D.	2 mg/kg	100 mg/kg
Mercury (Hg)	N.D.	2 mg/kg	1000 mg/kg
Hexavalent Chromium (Cr(VI))	N.D. ▼	0.10 µg/cm ² (LOQ)	1000 mg/kg
Tested Item(s)	Result	MDL	Limit
	008		
Polybrominated Biphenyls (PBBs)			
Monobromobiphenyl	N.D.	5 mg/kg	1000 mg/kg
Dibromobiphenyl	N.D.	5 mg/kg	
Tribromobiphenyl	N.D.	5 mg/kg	
Tetrabromobiphenyl	N.D.	5 mg/kg	
Pentabromobiphenyl	N.D.	5 mg/kg	
Hexabromobiphenyl	N.D.	5 mg/kg	
Heptabromobiphenyl	N.D.	5 mg/kg	
Octabromobiphenyl	N.D.	5 mg/kg	
Nonabromobiphenyl	N.D.	5 mg/kg	
Decabromobiphenyl	N.D.	5 mg/kg	
Tested Item(s)	Result	MDL	Limit
	008		
Polybrominated Diphenyl Ethers (PBDEs)			
Monobromodiphenyl ether	N.D.	5 mg/kg	1000 mg/kg
Dibromodiphenyl ether	N.D.	5 mg/kg	
Tribromodiphenyl ether	N.D.	5 mg/kg	
Tetrabromodiphenyl ether	N.D.	5 mg/kg	
Pentabromodiphenyl ether	N.D.	5 mg/kg	
Hexabromodiphenyl ether	N.D.	5 mg/kg	
Heptabromodiphenyl ether	N.D.	5 mg/kg	
Octabromodiphenyl ether	N.D.	5 mg/kg	
Nonabromodiphenyl ether	N.D.	5 mg/kg	
Decabromodiphenyl ether	N.D.	5 mg/kg	

Test Report

Report No. A2230430133101008

Page 4 of 7

Test Result(s)

Tested Item(s)	Result	MDL	Limit
	008		
Phthalates (DBP, BBP, DEHP, DIBP)			
Dibutyl phthalate (DBP) CAS#:84-74-2	N.D.	50 mg/kg	1000 mg/kg
Butyl benzyl phthalate (BBP) CAS#:85-68-7	N.D.	50 mg/kg	1000 mg/kg
Di-(2-ethylhexyl) phthalate (DEHP) CAS#:117-81-7	N.D.	50 mg/kg	1000 mg/kg
Diisobutyl phthalate (DIBP) CAS#:84-69-5	N.D.	50 mg/kg	1000 mg/kg
Tested Item(s)	Result	MDL	
	008		
Arsenic (As)	N.D.	10 mg/kg	
Beryllium (Be)	N.D.	10 mg/kg	
Antimony (Sb)	N.D.	10 mg/kg	
Tested Item(s)	Result	MDL	
	008		
Fluorine (F)	N.D.	1 µg/cm ²	
Chlorine (Cl)	N.D.	1 µg/cm ²	
Bromine (Br)	N.D.	1 µg/cm ²	
Iodine (I)	N.D.	1 µg/cm ²	
Tested Item(s)	Result	MDL	
	008		
Perfluorooctane Sulfonates (PFOS)	N.D.	0.5 µg/m ²	

Sample/Part Description

No.	CTI Sample ID	Description
1	008	Golden plating

Remark: The sample(s) had been dissolved totally tested for Lead, Cadmium, Mercury, Arsenic, Beryllium, Antimony.

-MDL = Method Detection Limit

-N.D. = Not Detected (<MDL or LOQ)

-mg/kg = ppm = parts per million

-1000 mg/kg = 0.1%

-LOQ = Limit of Quantification, The LOQ of Hexavalent chromium is 0.10 µg/cm²

-The sample is negative for Cr(VI) – The Cr(VI) concentration is below 0.10 µg/cm². The coating is considered a non-Cr(VI) based coating.

Note: “*” indicates the method(s) is (are) not in CNAS accreditation scope.

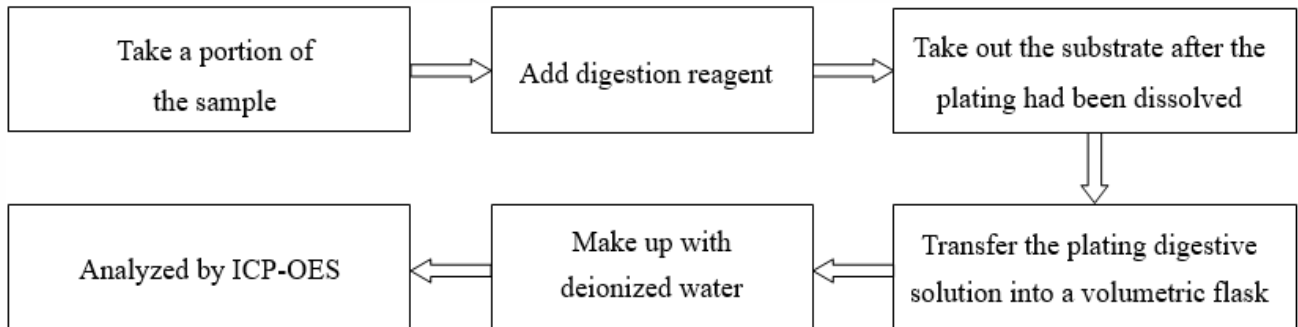
Test Report

Report No. A2230430133101008

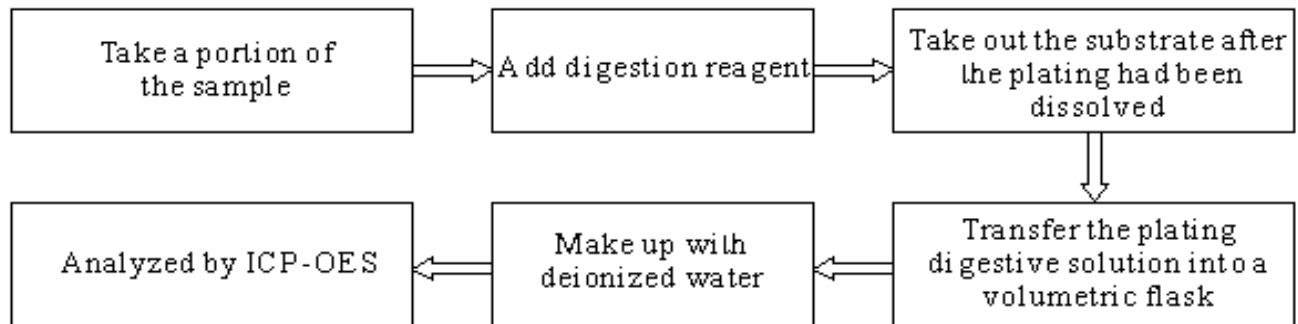
Page 5 of 7

Test Process

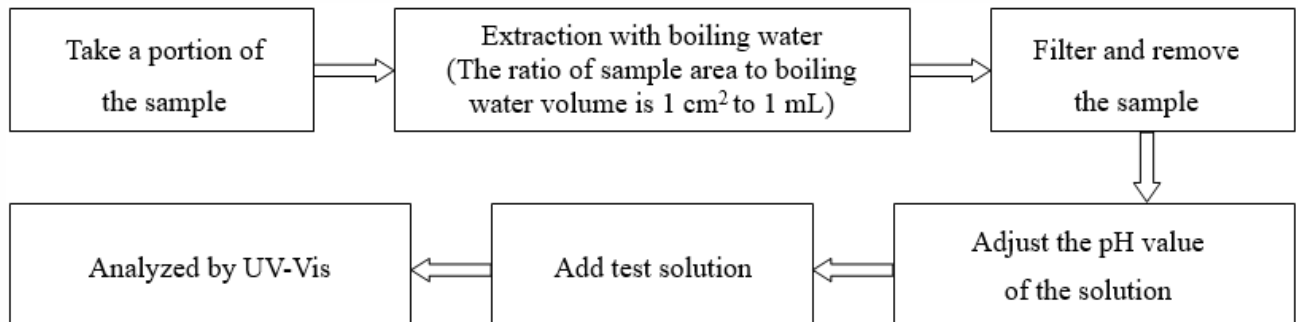
1. Lead (Pb), Cadmium (Cd)



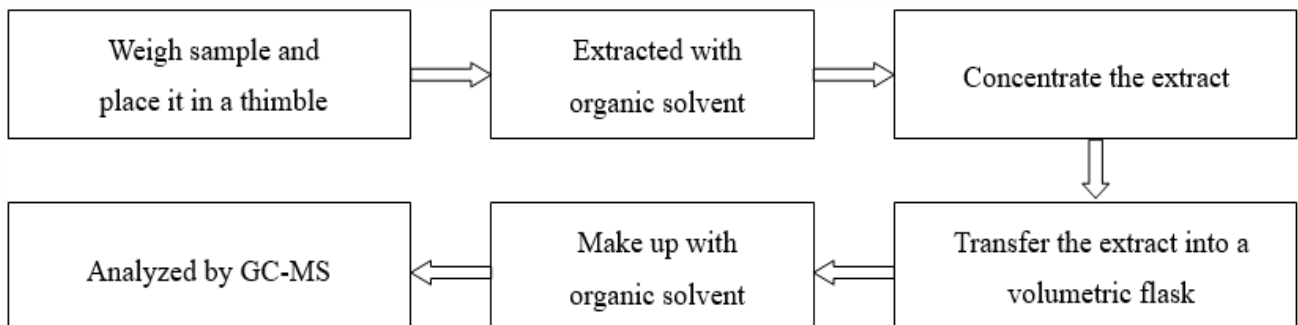
2. Mercury (Hg)



3. Hexavalent Chromium (Cr(VI))



4. Polybrominated Biphenyls (PBBs), Polybrominated Diphenyl Ethers (PBDEs)

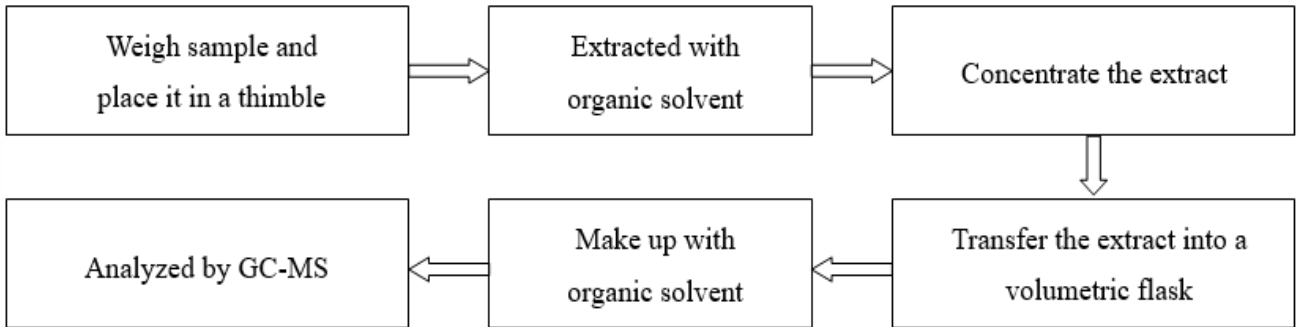


Test Report

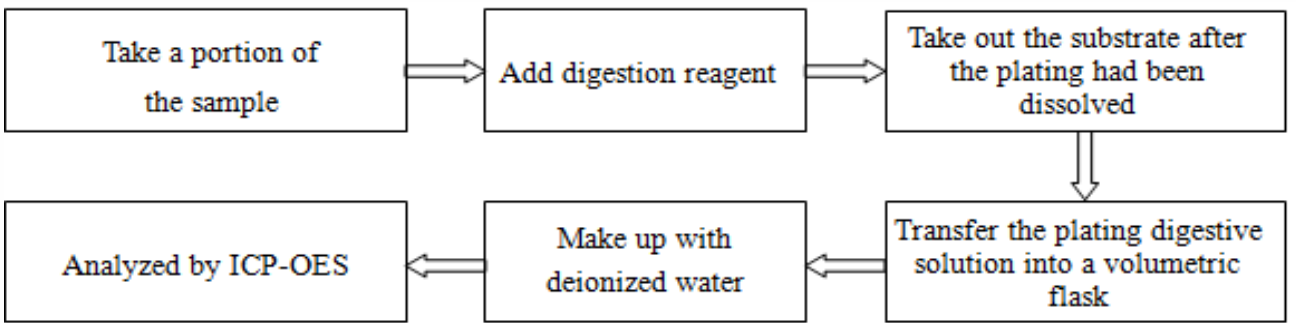
Report No. A2230430133101008

Page 6 of 7

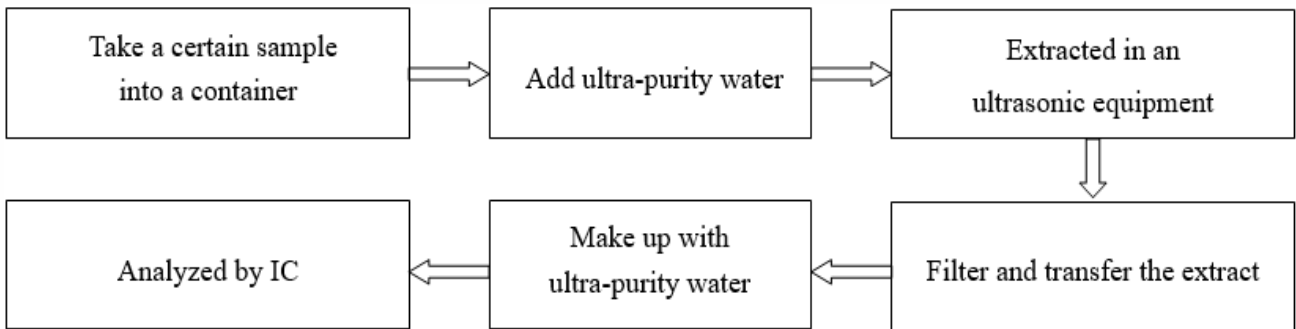
5. Phthalates (DBP, BBP, DEHP, DIBP)



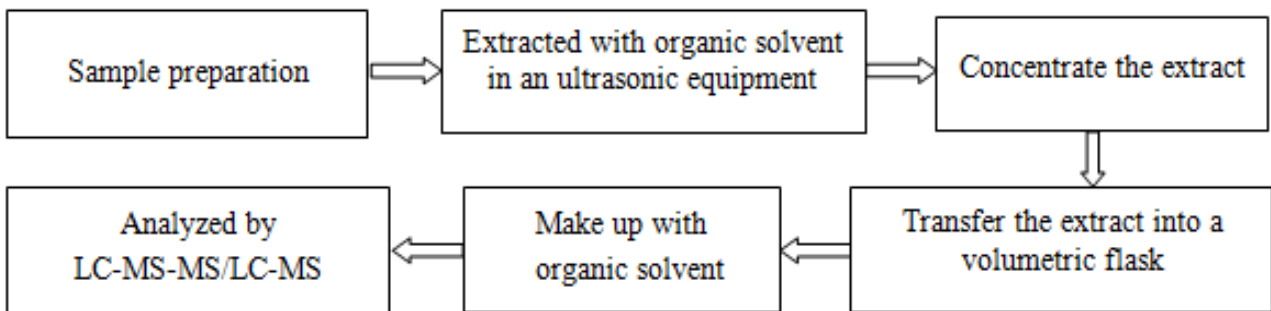
6. Arsenic(As), Beryllium(Be), Antimony(Sb)



7. Fluorine (F), Chlorine (Cl), Bromine (Br), Iodine (I)



8. Perfluorooctane Sulfonates(PFOS)

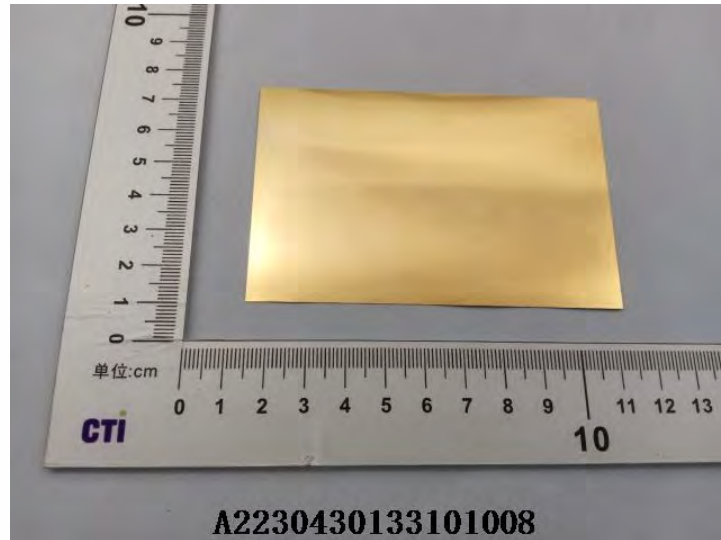


Test Report

Report No. A2230430133101008

Page 7 of 7

Photo(s) of the sample(s)



Statement:

1. This report is considered invalid without approved signature, special seal and the seal on the perforation;
2. The Company Name shown on Report and Address, the sample(s) and sample information was/were provided by the applicant who should be responsible for the authenticity which CTI hasn't verified;
3. The result(s) shown in this report refer(s) only to the sample(s) tested;
4. Without written approval of CTI, this report can't be reproduced except in full;
5. In case of any discrepancy between the English version and Chinese version of the testing reports (if generated), the Chinese version shall prevail.

*** End of report ***



Test Report

No.: ETR23705938

Date: 04-Aug-2023

Page: 1 of 10

SHINKONG SYNTHETIC FIBERS CORPORATION
SHINKONG APPLIED MATERIALS (JIANGSU) COMPANY LIMITED
LOTUS BUILDING, 5F, NO.136, SEC.3, REN AI ROAD, DA AN DISTRICT, TAIPEI CITY 10657, TAIWAN
NO.1, HUAFA ROAD, TANGZHOU ECONOMIC AND TECHNOLOGICAL DEVELOPMENT ZONE, YANGZHOU
JIANGSU, CHINA


The following sample(s) was/were submitted and identified by the applicant as:


Sample Submitted By : SHINKONG SYNTHETIC FIBERS CORPORATION
Sample Name : THERMOPLASTIC POLYESTER RESIN
Style/Item No. : SHINITE ® PBT F202G30BK , F202G30BL ,F202G30NA

Sample Receiving Date : 28-Jul-2023
Testing Period : 28-Jul-2023 to 04-Aug-2023

Test Requested : Testing item(s) is/are specified by client. Please refer to result table for testing item(s).

Test Results : Please refer to following pages.


Troy Chang / Department Manager
Signed for and on behalf of
SGS TAIWAN LTD.
Chemical Laboratory - Taipei



PIN CODE: E76BDC46

This document is issued by the Company subject to its General Conditions of Service printed overleaf, available on request or accessible at <https://www.sgs.com.tw/terms-of-service> and, for electronic format documents, subject to Terms and Conditions for Electronic Documents at <https://www.sgs.com.tw/terms-of-service>. Attention is drawn to the limitation of liability, indemnification and jurisdiction issues defined therein. Any holder of this document is advised that information contained hereon reflects the Company's findings at the time of its intervention only and within the limits of client's instruction, if any. The Company's sole responsibility is to its Client and this document does not exonerate parties to a transaction from exercising all their rights and obligations under the transaction documents. This document cannot be reproduced, except in full, without prior written approval of the Company. Any unauthorized alteration, forgery or falsification of the content or appearance of this document is unlawful and offenders may be prosecuted to the fullest extent of the law. Unless otherwise stated the results shown in this test report refer only to the sample(s) tested.

Test Report

No.: ETR23705938

Date: 04-Aug-2023

Page: 2 of 10

SHINKONG SYNTHETIC FIBERS CORPORATION
 SHINKONG APPLIED MATERIALS (JIANGSU) COMPANY LIMITED
 LOTUS BUILDING, 5F, NO.136, SEC.3, REN AI ROAD, DA AN DISTRICT, TAIPEI CITY 10657, TAIWAN
 NO.1, HUAFA ROAD, TANGZHOU ECONOMIC AND TECHNOLOGICAL DEVELOPMENT ZONE, YANGZHOU
 JIANGSU, CHINA

Test Part Description

No.1 : MIXED WHITE, BLUE AND BLACK PLASTIC PELLETS

Test Result(s)

Test Item(s)	Method	Unit	MDL	Result
				No.1
Cadmium (Cd)	With reference to IEC 62321-5: 2013, analysis was performed by ICP-OES.	mg/kg	2	n.d.
Lead (Pb)		mg/kg	2	8.45
Mercury (Hg)	With reference to IEC 62321-4: 2013+AMD1: 2017, analysis was performed by ICP-OES.	mg/kg	2	n.d.
Hexavalent Chromium Cr(VI)	With reference to IEC 62321-7-2: 2017, analysis was performed by UV-VIS.	mg/kg	8	n.d.
Monobromobiphenyl	With reference to IEC 62321-6: 2015, analysis was performed by GC/MS.	mg/kg	5	n.d.
Dibromobiphenyl		mg/kg	5	n.d.
Tribromobiphenyl		mg/kg	5	n.d.
Tetrabromobiphenyl		mg/kg	5	n.d.
Pentabromobiphenyl		mg/kg	5	n.d.
Hexabromobiphenyl		mg/kg	5	n.d.
Heptabromobiphenyl		mg/kg	5	n.d.
Octabromobiphenyl		mg/kg	5	n.d.
Nonabromobiphenyl		mg/kg	5	n.d.
Decabromobiphenyl		mg/kg	5	n.d.
Sum of PBBs		mg/kg	-	n.d.
Monobromodiphenyl ether		mg/kg	5	n.d.
Dibromodiphenyl ether		mg/kg	5	n.d.
Tribromodiphenyl ether		mg/kg	5	n.d.
Tetrabromodiphenyl ether		mg/kg	5	n.d.
Pentabromodiphenyl ether		mg/kg	5	n.d.
Hexabromodiphenyl ether		mg/kg	5	n.d.
Heptabromodiphenyl ether		mg/kg	5	n.d.
Octabromodiphenyl ether		mg/kg	5	n.d.
Nonabromodiphenyl ether		mg/kg	5	n.d.
Decabromodiphenyl ether	mg/kg	5	n.d.	
Sum of PBDEs	mg/kg	-	n.d.	

This document is issued by the Company subject to its General Conditions of Service printed overleaf, available on request or accessible at <https://www.sgs.com.tw/terms-of-service> and, for electronic format documents, subject to Terms and Conditions for Electronic Documents at <https://www.sgs.com.tw/terms-of-service>. Attention is drawn to the limitation of liability, indemnification and jurisdiction issues defined therein. Any holder of this document is advised that information contained hereon reflects the Company's findings at the time of its intervention only and within the limits of client's instruction, if any. The Company's sole responsibility is to its Client and this document does not exonerate parties to a transaction from exercising all their rights and obligations under the transaction documents. This document cannot be reproduced, except in full, without prior written approval of the Company. Any unauthorized alteration, forgery or falsification of the content or appearance of this document is unlawful and offenders may be prosecuted to the fullest extent of the law. Unless otherwise stated the results shown in this test report refer only to the sample(s) tested.

Test Report

No.: ETR23705938

Date: 04-Aug-2023

Page: 3 of 10

SHINKONG SYNTHETIC FIBERS CORPORATION

SHINKONG APPLIED MATERIALS (JIANGSU) COMPANY LIMITED

LOTUS BUILDING, 5F, NO.136, SEC.3, REN AI ROAD, DA AN DISTRICT, TAIPEI CITY 10657, TAIWAN

NO.1, HUAFA ROAD, TANGZHOU ECONOMIC AND TECHNOLOGICAL DEVELOPMENT ZONE, YANGZHOU

JIANGSU, CHINA

Test Item(s)	Method	Unit	MDL	Result
				No.1
Butyl benzyl phthalate (BBP)	With reference to IEC 62321-8: 2017, analysis was performed by GC/MS.	mg/kg	50	n.d.
Dibutyl phthalate (DBP)		mg/kg	50	n.d.
Di-(2-ethylhexyl) phthalate (DEHP)		mg/kg	50	n.d.
Diisobutyl phthalate (DIBP)		mg/kg	50	n.d.
Diisodecyl phthalate (DIDP) (CAS No.: 26761-40-0, 68515-49-1)		mg/kg	50	n.d.
Diisononyl phthalate (DINP) (CAS No.: 28553-12-0, 68515-48-0)		mg/kg	50	n.d.
Di-n-octyl phthalate (DNOP) (CAS No.: 117-84-0)		mg/kg	50	n.d.
Diundecyl phthalate (DUP) (CAS No.: 3648-20-2)		mg/kg	50	n.d.
Di-n-pentyl phthalate (DNPP) (CAS No.: 131-18-0)		mg/kg	50	n.d.
Bis(2-methoxyethyl) phthalate (DMEP) (CAS No.: 117-82-8)		mg/kg	50	n.d.
Dipropylheptyl phthalate (CAS No.: 53306-54-0)		mg/kg	50	n.d.
Di-n-hexyl phthalate (DNHP) (CAS No.: 84-75-3)		mg/kg	50	n.d.
Chlorine (Cl) (CAS No.: 22537-15-1)	With reference to BS EN 14582: 2016, analysis was performed by IC.	mg/kg	50	n.d.
Bromine (Br) (CAS No.: 10097-32-2)	With reference to BS EN 14582: 2016, analysis was performed by IC.	mg/kg	50	n.d.
Hexabromocyclododecane (HBCDD) and all major diastereoisomers identified (α - HBCDD, β - HBCDD, γ - HBCDD) (CAS No.: 25637-99-4, 3194-55-6 (134237-51-7, 134237-50-6, 134237-52-8))	With reference to IEC 62321-9: 2021, analysis was performed by GC/MS.	mg/kg	20	n.d.

This document is issued by the Company subject to its General Conditions of Service printed overleaf, available on request or accessible at <https://www.sgs.com.tw/terms-of-service> and, for electronic format documents, subject to Terms and Conditions for Electronic Documents at <https://www.sgs.com.tw/terms-of-service>. Attention is drawn to the limitation of liability, indemnification and jurisdiction issues defined therein. Any holder of this document is advised that information contained hereon reflects the Company's findings at the time of its intervention only and within the limits of client's instruction, if any. The Company's sole responsibility is to its Client and this document does not exonerate parties to a transaction from exercising all their rights and obligations under the transaction documents. This document cannot be reproduced, except in full, without prior written approval of the Company. Any unauthorized alteration, forgery or falsification of the content or appearance of this document is unlawful and offenders may be prosecuted to the fullest extent of the law. Unless otherwise stated the results shown in this test report refer only to the sample(s) tested.



Test Report

No.: ETR23705938

Date: 04-Aug-2023

Page: 4 of 10

SHINKONG SYNTHETIC FIBERS CORPORATION
SHINKONG APPLIED MATERIALS (JIANGSU) COMPANY LIMITED
LOTUS BUILDING, 5F, NO.136, SEC.3, REN AI ROAD, DA AN DISTRICT, TAIPEI CITY 10657, TAIWAN
NO.1, HUAFA ROAD, TANGZHOU ECONOMIC AND TECHNOLOGICAL DEVELOPMENT ZONE, YANGZHOU
JIANGSU, CHINA

Note :

1. mg/kg = ppm ; 0.1wt% = 0.1% = 1000ppm
2. MDL = Method Detection Limit
3. n.d. = Not Detected (Less than MDL)
4. "-" = Not Regulated
5. The sample(s) was/were analyzed on behalf of the applicant as mixing sample in one testing. The above result(s) was/were only given as the informality value.

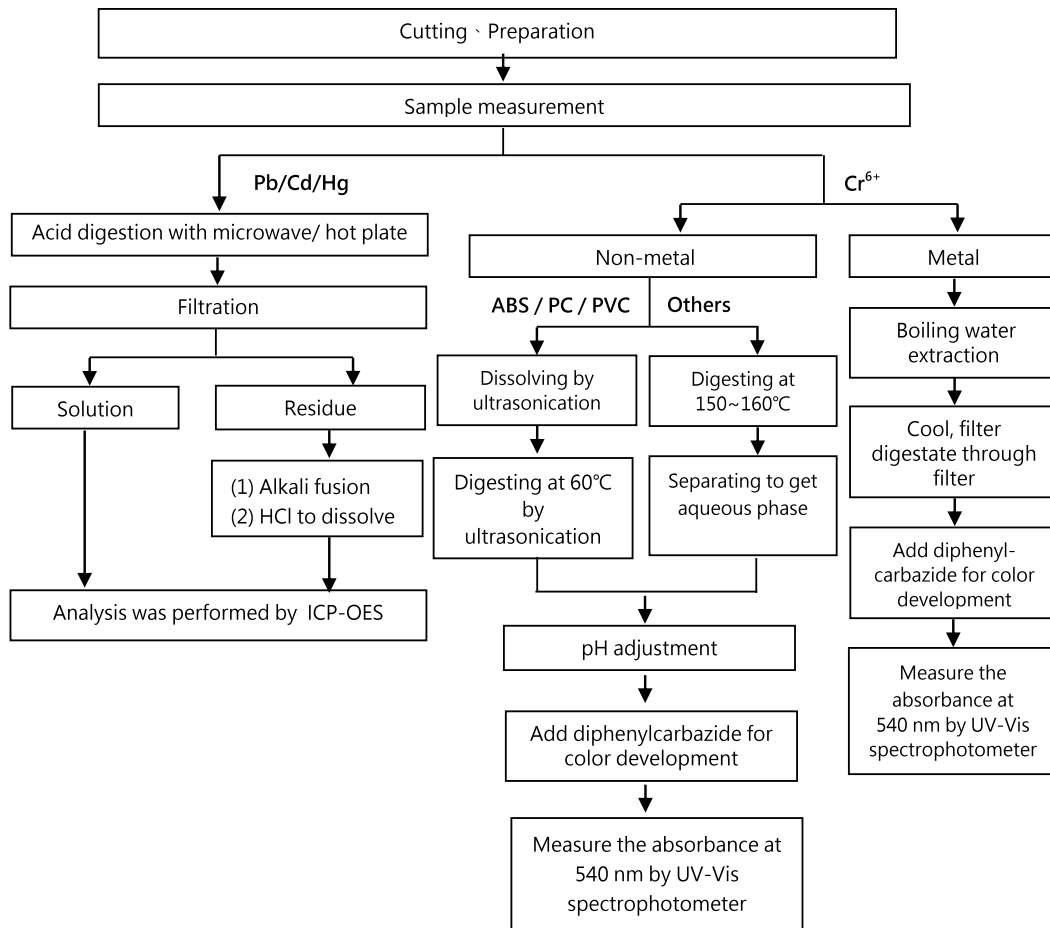
This document is issued by the Company subject to its General Conditions of Service printed overleaf, available on request or accessible at <https://www.sgs.com.tw/terms-of-service> and, for electronic format documents, subject to Terms and Conditions for Electronic Documents at <https://www.sgs.com.tw/terms-of-service>. Attention is drawn to the limitation of liability, indemnification and jurisdiction issues defined therein. Any holder of this document is advised that information contained hereon reflects the Company's findings at the time of its intervention only and within the limits of client's instruction, if any. The Company's sole responsibility is to its Client and this document does not exonerate parties to a transaction from exercising all their rights and obligations under the transaction documents. This document cannot be reproduced, except in full, without prior written approval of the Company. Any unauthorized alteration, forgery or falsification of the content or appearance of this document is unlawful and offenders may be prosecuted to the fullest extent of the law. Unless otherwise stated the results shown in this test report refer only to the sample(s) tested.

SHINKONG SYNTHETIC FIBERS CORPORATION
 SHINKONG APPLIED MATERIALS (JIANGSU) COMPANY LIMITED
 LOTUS BUILDING, 5F, NO.136, SEC.3, REN AI ROAD, DA AN DISTRICT, TAIPEI CITY 10657, TAIWAN
 NO.1, HUAFA ROAD, TANGZHOU ECONOMIC AND TECHNOLOGICAL DEVELOPMENT ZONE, YANGZHOU
 JIANGSU, CHINA

Analytical flow chart of heavy metal

These samples were dissolved totally by pre-conditioning method according to below flow chart.

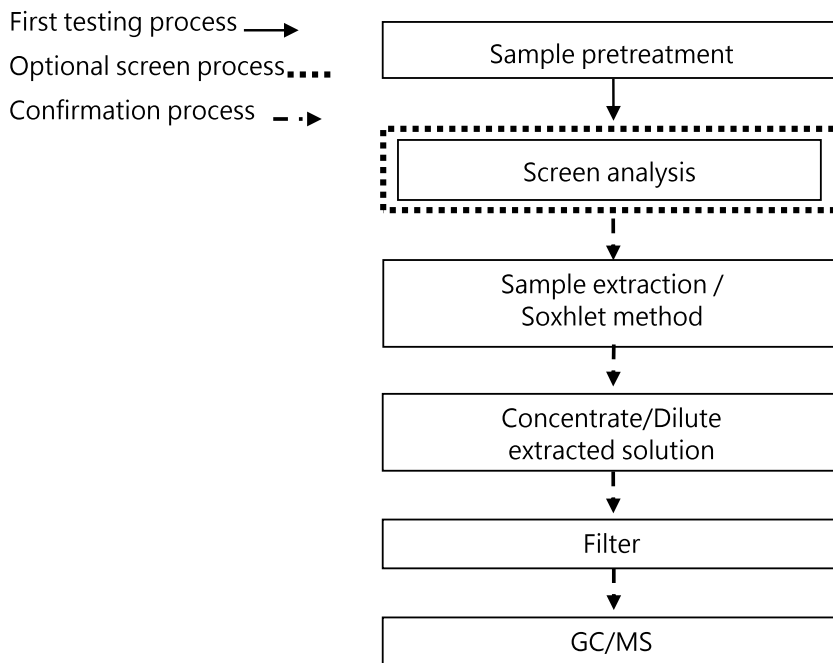
(Cr⁶⁺ test method excluded)



This document is issued by the Company subject to its General Conditions of Service printed overleaf, available on request or accessible at <https://www.sgs.com.tw/terms-of-service> and, for electronic format documents, subject to Terms and Conditions for Electronic Documents at <https://www.sgs.com.tw/terms-of-service>. Attention is drawn to the limitation of liability, indemnification and jurisdiction issues defined therein. Any holder of this document is advised that information contained hereon reflects the Company's findings at the time of its intervention only and within the limits of client's instruction, if any. The Company's sole responsibility is to its Client and this document does not exonerate parties to a transaction from exercising all their rights and obligations under the transaction documents. This document cannot be reproduced, except in full, without prior written approval of the Company. Any unauthorized alteration, forgery or falsification of the content or appearance of this document is unlawful and offenders may be prosecuted to the fullest extent of the law. Unless otherwise stated the results shown in this test report refer only to the sample(s) tested.

SHINKONG SYNTHETIC FIBERS CORPORATION
 SHINKONG APPLIED MATERIALS (JIANGSU) COMPANY LIMITED
 LOTUS BUILDING, 5F, NO.136, SEC.3, REN AI ROAD, DA AN DISTRICT, TAIPEI CITY 10657, TAIWAN
 NO.1, HUAFA ROAD, TANGZHOU ECONOMIC AND TECHNOLOGICAL DEVELOPMENT ZONE, YANGZHOU
 JIANGSU, CHINA

Analytical flow chart – PBBs / PBDEs

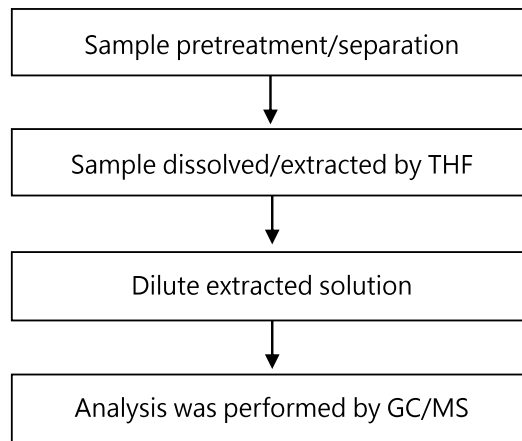


This document is issued by the Company subject to its General Conditions of Service printed overleaf, available on request or accessible at <https://www.sgs.com.tw/terms-of-service> and, for electronic format documents, subject to Terms and Conditions for Electronic Documents at <https://www.sgs.com.tw/terms-of-service>. Attention is drawn to the limitation of liability, indemnification and jurisdiction issues defined therein. Any holder of this document is advised that information contained hereon reflects the Company's findings at the time of its intervention only and within the limits of client's instruction, if any. The Company's sole responsibility is to its Client and this document does not exonerate parties to a transaction from exercising all their rights and obligations under the transaction documents. This document cannot be reproduced, except in full, without prior written approval of the Company. Any unauthorized alteration, forgery or falsification of the content or appearance of this document is unlawful and offenders may be prosecuted to the fullest extent of the law. Unless otherwise stated the results shown in this test report refer only to the sample(s) tested.

SHINKONG SYNTHETIC FIBERS CORPORATION
SHINKONG APPLIED MATERIALS (JIANGSU) COMPANY LIMITED
LOTUS BUILDING, 5F, NO.136, SEC.3, REN AI ROAD, DA AN DISTRICT, TAIPEI CITY 10657, TAIWAN
NO.1, HUAFA ROAD, TANGZHOU ECONOMIC AND TECHNOLOGICAL DEVELOPMENT ZONE, YANGZHOU
JIANGSU, CHINA

Analytical flow chart - Phthalate

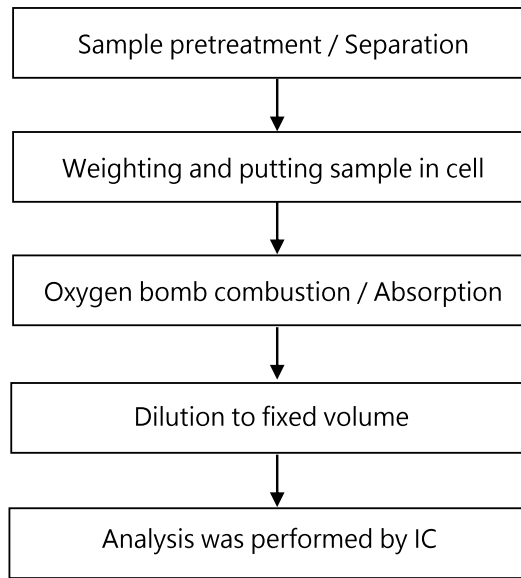
【Test method: IEC 62321-8】



This document is issued by the Company subject to its General Conditions of Service printed overleaf, available on request or accessible at <https://www.sgs.com.tw/terms-of-service> and, for electronic format documents, subject to Terms and Conditions for Electronic Documents at <https://www.sgs.com.tw/terms-of-service>. Attention is drawn to the limitation of liability, indemnification and jurisdiction issues defined therein. Any holder of this document is advised that information contained hereon reflects the Company's findings at the time of its intervention only and within the limits of client's instruction, if any. The Company's sole responsibility is to its Client and this document does not exonerate parties to a transaction from exercising all their rights and obligations under the transaction documents. This document cannot be reproduced, except in full, without prior written approval of the Company. Any unauthorized alteration, forgery or falsification of the content or appearance of this document is unlawful and offenders may be prosecuted to the fullest extent of the law. Unless otherwise stated the results shown in this test report refer only to the sample(s) tested.

SHINKONG SYNTHETIC FIBERS CORPORATION
SHINKONG APPLIED MATERIALS (JIANGSU) COMPANY LIMITED
LOTUS BUILDING, 5F, NO.136, SEC.3, REN AI ROAD, DA AN DISTRICT, TAIPEI CITY 10657, TAIWAN
NO.1, HUAFA ROAD, TANGZHOU ECONOMIC AND TECHNOLOGICAL DEVELOPMENT ZONE, YANGZHOU
JIANGSU, CHINA

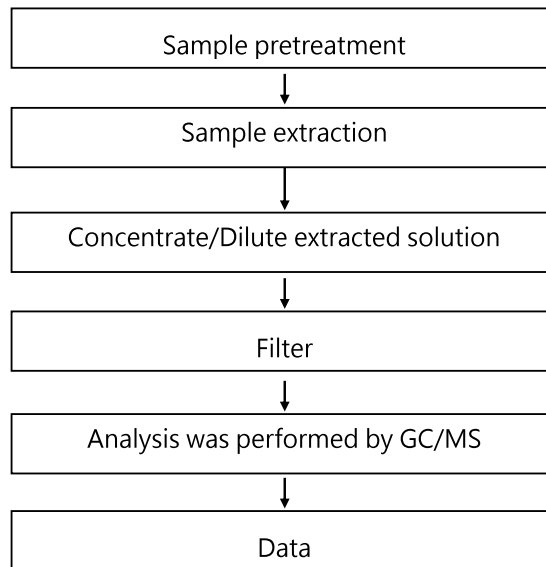
Analytical flow chart - Halogen



This document is issued by the Company subject to its General Conditions of Service printed overleaf, available on request or accessible at <https://www.sgs.com.tw/terms-of-service> and, for electronic format documents, subject to Terms and Conditions for Electronic Documents at <https://www.sgs.com.tw/terms-of-service>. Attention is drawn to the limitation of liability, indemnification and jurisdiction issues defined therein. Any holder of this document is advised that information contained hereon reflects the Company's findings at the time of its intervention only and within the limits of client's instruction, if any. The Company's sole responsibility is to its Client and this document does not exonerate parties to a transaction from exercising all their rights and obligations under the transaction documents. This document cannot be reproduced, except in full, without prior written approval of the Company. Any unauthorized alteration, forgery or falsification of the content or appearance of this document is unlawful and offenders may be prosecuted to the fullest extent of the law. Unless otherwise stated the results shown in this test report refer only to the sample(s) tested.

SHINKONG SYNTHETIC FIBERS CORPORATION
SHINKONG APPLIED MATERIALS (JIANGSU) COMPANY LIMITED
LOTUS BUILDING, 5F, NO.136, SEC.3, REN AI ROAD, DA AN DISTRICT, TAIPEI CITY 10657, TAIWAN
NO.1, HUAFU ROAD, TANGZHOU ECONOMIC AND TECHNOLOGICAL DEVELOPMENT ZONE, YANGZHOU
JIANGSU, CHINA

Analytical flow chart - HBCDD



This document is issued by the Company subject to its General Conditions of Service printed overleaf, available on request or accessible at <https://www.sgs.com.tw/terms-of-service> and, for electronic format documents, subject to Terms and Conditions for Electronic Documents at <https://www.sgs.com.tw/terms-of-service>. Attention is drawn to the limitation of liability, indemnification and jurisdiction issues defined therein. Any holder of this document is advised that information contained hereon reflects the Company's findings at the time of its intervention only and within the limits of client's instruction, if any. The Company's sole responsibility is to its Client and this document does not exonerate parties to a transaction from exercising all their rights and obligations under the transaction documents. This document cannot be reproduced, except in full, without prior written approval of the Company. Any unauthorized alteration, forgery or falsification of the content or appearance of this document is unlawful and offenders may be prosecuted to the fullest extent of the law. Unless otherwise stated the results shown in this test report refer only to the sample(s) tested.

Test Report

No.: ETR23705938

Date: 04-Aug-2023

Page: 10 of 10

SHINKONG SYNTHETIC FIBERS CORPORATION
SHINKONG APPLIED MATERIALS (JIANGSU) COMPANY LIMITED
LOTUS BUILDING, 5F, NO.136, SEC.3, REN AI ROAD, DA AN DISTRICT, TAIPEI CITY 10657, TAIWAN
NO.1, HUAFA ROAD, TANGZHOU ECONOMIC AND TECHNOLOGICAL DEVELOPMENT ZONE, YANGZHOU
JIANGSU, CHINA

* The tested sample / part is marked by an arrow if it's shown on the photo. *

ETR23705938



** End of Report **

This document is issued by the Company subject to its General Conditions of Service printed overleaf, available on request or accessible at <https://www.sgs.com.tw/terms-of-service> and, for electronic format documents, subject to Terms and Conditions for Electronic Documents at <https://www.sgs.com.tw/terms-of-service>. Attention is drawn to the limitation of liability, indemnification and jurisdiction issues defined therein. Any holder of this document is advised that information contained hereon reflects the Company's findings at the time of its intervention only and within the limits of client's instruction, if any. The Company's sole responsibility is to its Client and this document does not exonerate parties to a transaction from exercising all their rights and obligations under the transaction documents. This document cannot be reproduced, except in full, without prior written approval of the Company. Any unauthorized alteration, forgery or falsification of the content or appearance of this document is unlawful and offenders may be prosecuted to the fullest extent of the law. Unless otherwise stated the results shown in this test report refer only to the sample(s) tested.

检测报告

编号: CANEC2301145810

日期: 2023年02月08日 第1页,共9页

客户名称: 福建紫金铜业有限公司
客户地址: 福建省上杭县南岗工业开发区

样品名称: 锡磷青铜: C5210
以上样品及信息由客户提供。

SGS工作编号: 23319230 - XM
样品接收日期: 2023年02月01日
检测周期: 2023年02月01日 - 2023年02月08日
检测要求: 根据客户要求检测
检测方法: 请参见下一页
检测结果: 请参见下一页

检测结果概要:

检测要求	结论
欧盟RoHS指令2011/65/EU附录II的修正指令(EU) 2015/863- 铅, 汞, 镉, 六价铬, 多溴联苯(PBBs), 多溴二苯醚(PBDEs), 邻苯二甲酸二丁酯 (DBP), 邻苯二甲酸丁苯酯(BBP), 邻苯二甲酸二(2-乙基己基)酯(DEHP)和邻苯二甲酸二异丁酯(DIBP)	符合
卤素	见检测结果
元素分析	见检测结果

通标标准技术服务有限公司广州分公司
授权签名

李嘉欣

Jessie Li 李嘉欣
批准签署人

scan to see the report



218C811E

Unless otherwise agreed in writing, this document is issued by the Company subject to its General Conditions of Service printed overleaf, available on request or accessible at <https://www.sgs.com/en/Terms-and-Conditions>. Attention is drawn to the limitation of liability, indemnification and jurisdiction issues defined therein. Any holder of this document is advised that information contained hereon reflects the Company's findings at the time of its intervention only and within the limits of Client's instructions, if any. The Company's sole responsibility is to its Client and this document does not exonerate parties to a transaction from exercising all their rights and obligations under the transaction documents. This document cannot be reproduced except in full, without prior written approval of the Company. Any unauthorized alteration, forgery or falsification of the content or appearance of this document is unlawful and offenders may be prosecuted to the fullest extent of the law. Unless otherwise stated the results shown in this test report refer only to the sample(s) tested.

Attention: To check the authenticity of testing /inspection report & certificate, please contact us at telephone: (86-755) 8307 1443, or email: CN.Doccheck@sgs.com

No.198, Kezhu Road, Science City, Economic & Technological Development Area, Guangzhou, Guangdong, China 510663
中国·广东·广州高新技术产业开发区科学城科珠路198号 邮编: 510663

t (86-20) 82155555 www.sgs.com.cn
t (86-20) 82155555 sgs.china@sgs.com

检测报告

编号: CANEC2301145810

日期: 2023年02月08日 第2页,共9页

检测结果:

检测样品描述:

样品编号	SGS样品ID	描述
SN1	CAN23-011458.002	铜色金属片

备注:

- (1) 1 mg/kg = 0.0001%
- (2) MDL = 方法检测限
- (3) ND = 未检出 (< MDL)
- (4) "-" = 未规定

欧盟RoHS指令2011/65/EU附录II的修正指令(EU) 2015/863-铅, 汞, 镉, 六价铬, 多溴联苯(PBBs), 多溴二苯醚(PBDEs), 邻苯二甲酸二丁酯 (DBP), 邻苯二甲酸丁苄酯(BBP), 邻苯二甲酸二(2-乙基己基)酯(DEHP)和邻苯二甲酸二异丁酯(DIBP)

检测方法: 参考IEC 62321-4:2013+A1:2017, IEC 62321-5:2013, IEC 62321-7-1:2015, IEC 62321-6:2015 和 IEC 62321-8:2017, 采用 ICP-OES, UV-Vis 和 GC-MS 进行分析。

检测项目	限值	单位	MDL	002
镉 (Cd)	100	mg/kg	2	ND
铅 (Pb)	1000	mg/kg	2	ND
汞 (Hg)	1000	mg/kg	2	ND
六价铬(Cr(VI))▼	-	µg/cm²	0.10	ND
多溴联苯之和(PBBs)	1000	mg/kg	-	ND
一溴联苯	-	mg/kg	5	ND
二溴联苯	-	mg/kg	5	ND
三溴联苯	-	mg/kg	5	ND
四溴联苯	-	mg/kg	5	ND
五溴联苯	-	mg/kg	5	ND
六溴联苯	-	mg/kg	5	ND
七溴联苯	-	mg/kg	5	ND
八溴联苯	-	mg/kg	5	ND
九溴联苯	-	mg/kg	5	ND
十溴联苯	-	mg/kg	5	ND
多溴二苯醚之和(PBDEs)	1000	mg/kg	-	ND
一溴二苯醚	-	mg/kg	5	ND
二溴二苯醚	-	mg/kg	5	ND
三溴二苯醚	-	mg/kg	5	ND
四溴二苯醚	-	mg/kg	5	ND



Unless otherwise agreed in writing, this document is issued by the Company subject to its General Conditions of Service printed overleaf, available on request or accessible at <https://www.sgs.com/en/Terms-and-Conditions>. Attention is drawn to the limitation of liability, indemnification and jurisdiction issues defined therein. Any holder of this document is advised that information contained hereon reflects the Company's findings at the time of its intervention only and within the limits of Client's instructions, if any. The Company's sole responsibility is to its Client and this document does not exonerate parties to a transaction from exercising all their rights and obligations under the transaction documents. This document cannot be reproduced except in full, without prior written approval of the Company. Any unauthorized alteration, forgery or falsification of the content or appearance of this document is unlawful and offenders may be prosecuted to the fullest extent of the law. Unless otherwise stated the results shown in this test report refer only to the sample(s) tested.

Attention: To check the authenticity of testing /inspection report & certificate, please contact us at telephone: (86-755) 8307 1443, or email: CN.Doccheck@sgs.com

SGS-CS Standards Technical Services Co., Ltd.
Guangzhou Branch (SGS) Chemical Laboratory

No.198, Kezhu Road, Science City, Economic & Technological Development Area, Guangzhou, Guangdong, China 510683
中国·广东·广州高新技术产业开发区科学城科珠路198号 邮编: 510683

t (86-20) 82155555 www.sgs.com.cn
t (86-20) 82155555 sgs.china@sgs.com

检测报告

编号: CANEC2301145810

日期: 2023年02月08日 第3页,共9页

检测项目	限值	单位	MDL	002
五溴二苯醚	-	mg/kg	5	ND
六溴二苯醚	-	mg/kg	5	ND
七溴二苯醚	-	mg/kg	5	ND
八溴二苯醚	-	mg/kg	5	ND
九溴二苯醚	-	mg/kg	5	ND
十溴二苯醚	-	mg/kg	5	ND
邻苯二甲酸二丁酯 (DBP)	1000	mg/kg	50	ND
邻苯二甲酸丁苄酯(BBP)	1000	mg/kg	50	ND
邻苯二甲酸二(2-乙基己基)酯(DEHP)	1000	mg/kg	50	ND
邻苯二甲酸二异丁酯(DIBP)	1000	mg/kg	50	ND

备注:

- (1)最大允许限值引用自RoHS指令(EU) 2015/863。
- (2) IEC 62321系列等同于 EN 62321系列
- (3) ▼=a. 当六价格的浓度高于0.13 $\mu\text{g}/\text{cm}^2$ 时, 样品为阳性, 即含有六价格;
 b. 当六价格的浓度为ND(低于0.10 $\mu\text{g}/\text{cm}^2$)时, 样品为阴性, 即未检测到六价格;
 c. 当六价格的浓度介于0.10 $\mu\text{g}/\text{cm}^2$ 与0.13 $\mu\text{g}/\text{cm}^2$ 之间时, 无法直接判定是否检测到六价格, 因不同个体的样品表面差异可能会影响测定结果;
 由于未获知样品的存储条件和生产日期, 样品的六价格检测结果仅能代表检测时样品含六价格的状态。

卤素

检测方法: 参考EN 14582:2016, 用 IC分析。

检测项目	单位	MDL	002
氟 (F)	mg/kg	50	ND
氯 (Cl)	mg/kg	50	ND
溴 (Br)	mg/kg	50	ND
碘 (I)	mg/kg	50	ND

元素分析

检测方法: SGS内部方法 (GZTC CHEM-TOP-009-01, 参考EPA 3050B:1996), 采用ICP-OES进行分析。



Unless otherwise agreed in writing, this document is issued by the Company subject to its General Conditions of Service printed overleaf, available on request or accessible at <https://www.sgs.com/en/Terms-and-Conditions>. Attention is drawn to the limitation of liability, indemnification and jurisdiction issues defined therein. Any holder of this document is advised that information contained hereon reflects the Company's findings at the time of its intervention only and within the limits of Client's instructions, if any. The Company's sole responsibility is to its Client and this document does not exonerate parties to a transaction from exercising all their rights and obligations under the transaction documents. This document cannot be reproduced except in full, without prior written approval of the Company. Any unauthorized alteration, forgery or falsification of the content or appearance of this document is unlawful and offenders may be prosecuted to the fullest extent of the law. Unless otherwise stated the results shown in this test report refer only to the sample(s) tested.

Attention: To check the authenticity of testing / inspection report & certificate, please contact us at telephone: (86-755) 8307 1443, or email: CN.Doccheck@sgs.com

检测报告

编号: CANEC2301145810

日期: 2023年02月08日 第4页,共9页

检测项目	单位	MDL	002
铍 (Be)	mg/kg	5	ND
锑 (Sb)	mg/kg	10	ND

除非另有说明, 参照ILAC-G8:09/2019, 使用简单接受 ($w=0$) 的二元判定规则进行符合性判定。
除非另有说明, 此报告结果仅对检测的样品负责。本报告未经本公司书面许可, 不可部分复制。
检测报告仅用于客户科研、教学、内部质量控制、产品研发等目的, 仅供内部参考。



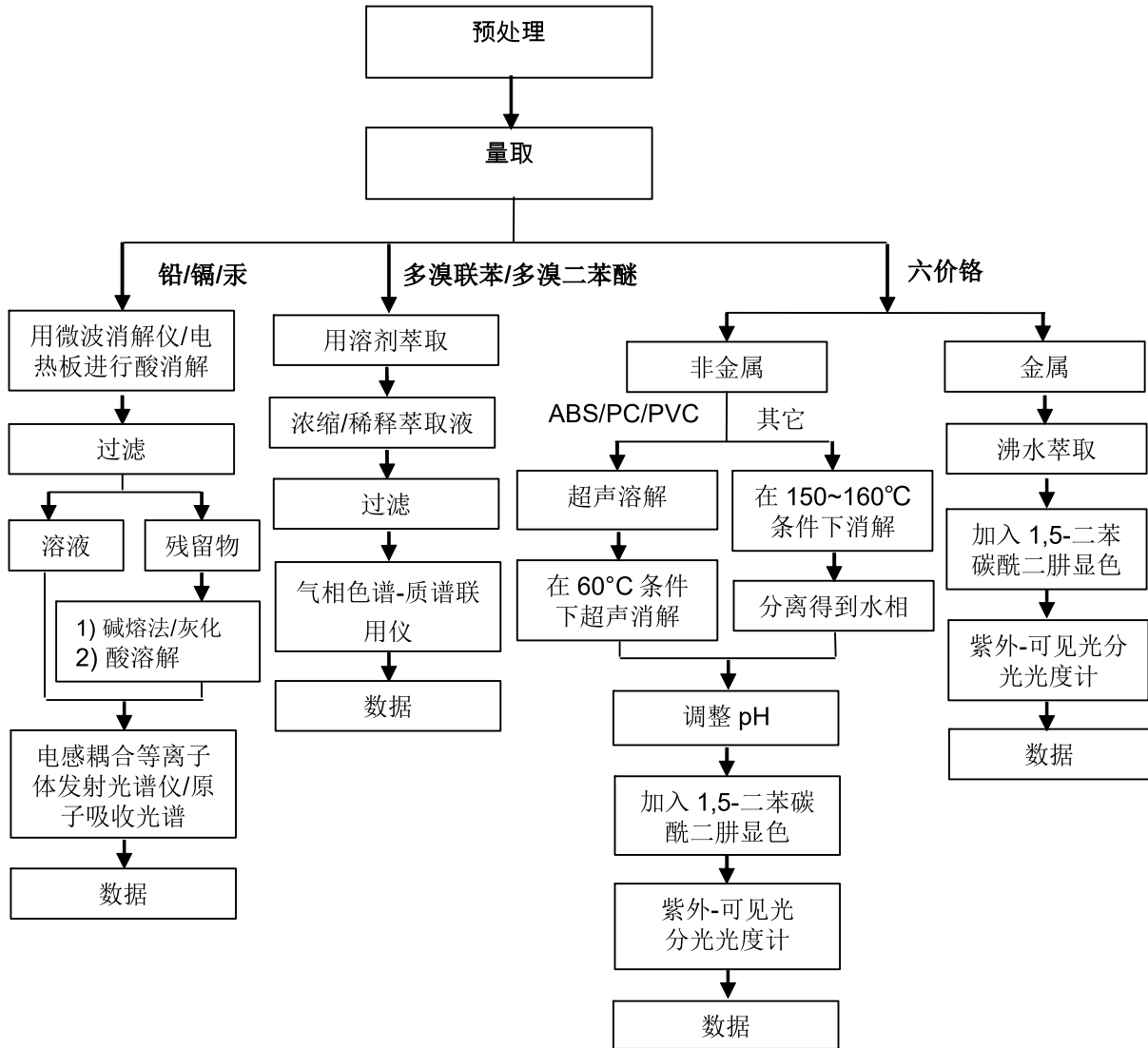
Unless otherwise agreed in writing, this document is issued by the Company subject to its General Conditions of Service printed overleaf, available on request or accessible at <https://www.sgs.com/en/Terms-and-Conditions>. Attention is drawn to the limitation of liability, indemnification and jurisdiction issues defined therein. Any holder of this document is advised that information contained hereon reflects the Company's findings at the time of its intervention only and within the limits of Client's instructions, if any. The Company's sole responsibility is to its Client and this document does not exonerate parties to a transaction from exercising all their rights and obligations under the transaction documents. This document cannot be reproduced except in full, without prior written approval of the Company. Any unauthorized alteration, forgery or falsification of the content or appearance of this document is unlawful and offenders may be prosecuted to the fullest extent of the law. Unless otherwise stated the results shown in this test report refer only to the sample(s) tested.

Attention: To check the authenticity of testing / inspection report & certificate, please contact us at telephone: (86-755) 8307 1443, or email: CN.Doccheck@sgs.com

附件

Pb/Cd/Hg/Cr⁶⁺/PBBs/PBDEs 检测流程图

1) 样品按照下述流程被完全消解（六价铬和多溴联苯/多溴二苯醚检测除外）。



Unless otherwise agreed in writing, this document is issued by the Company subject to its General Conditions of Service printed overleaf, available on request or accessible at <https://www.sgs.com/en/Terms-and-Conditions>. Attention is drawn to the limitation of liability, indemnification and jurisdiction issues defined therein. Any holder of this document is advised that information contained hereon reflects the Company's findings at the time of its intervention only and within the limits of Client's instructions, if any. The Company's sole responsibility is to its Client and this document does not exonerate parties to a transaction from exercising all their rights and obligations under the transaction documents. This document cannot be reproduced except in full, without prior written approval of the Company. Any unauthorized alteration, forgery or falsification of the content or appearance of this document is unlawful and offenders may be prosecuted to the fullest extent of the law. Unless otherwise stated the results shown in this test report refer only to the sample(s) tested.

Attention: To check the authenticity of testing /inspection report & certificate, please contact us at telephone: (86-755) 8307 1443, or email: CN.Doccheck@sgs.com

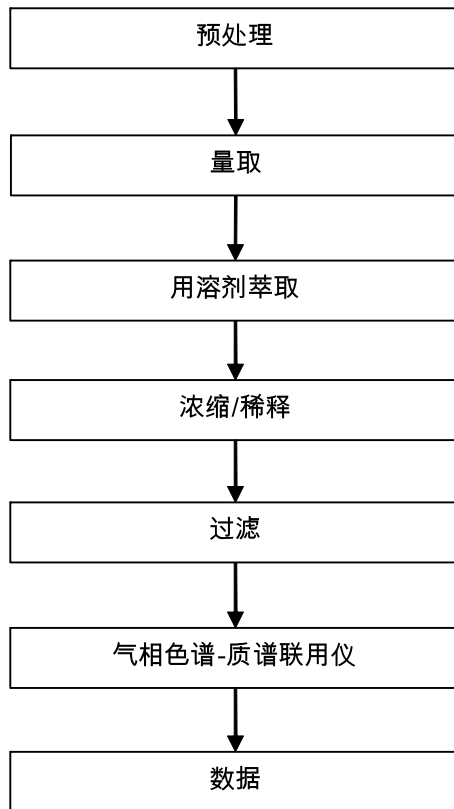
SGS-CSI Standards Technical Services Co., Ltd.
Guangzhou Branch / 广州分公司

No.198, Kezhu Road, Science City, Economic & Technological Development Area, Guangzhou, Guangdong, China 510683
中国·广东·广州高新技术产业开发区科学城科珠路198号 邮编: 510683

t (86-20) 82155555 www.sgs.com.cn
t (86-20) 82155555 sgs.china@sgs.com

附件

Phthalates 检测流程图

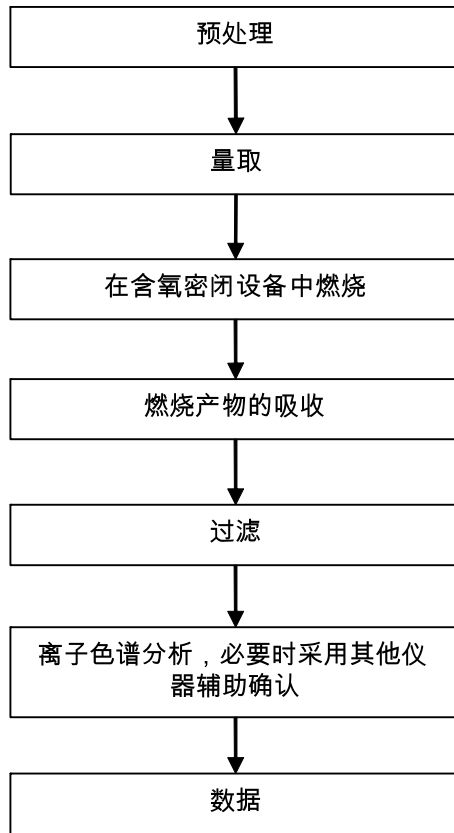


Unless otherwise agreed in writing, this document is issued by the Company subject to its General Conditions of Service printed overleaf, available on request or accessible at <https://www.sgs.com/en/Terms-and-Conditions>. Attention is drawn to the limitation of liability, indemnification and jurisdiction issues defined therein. Any holder of this document is advised that information contained hereon reflects the Company's findings at the time of its intervention only and within the limits of Client's instructions, if any. The Company's sole responsibility is to its Client and this document does not exonerate parties to a transaction from exercising all their rights and obligations under the transaction documents. This document cannot be reproduced except in full, without prior written approval of the Company. Any unauthorized alteration, forgery or falsification of the content or appearance of this document is unlawful and offenders may be prosecuted to the fullest extent of the law. Unless otherwise stated the results shown in this test report refer only to the sample(s) tested.

Attention: To check the authenticity of testing /inspection report & certificate, please contact us at telephone: (86-755) 8307 1443, or email: CN.Doccheck@sgs.com

附件

卤素检测流程图

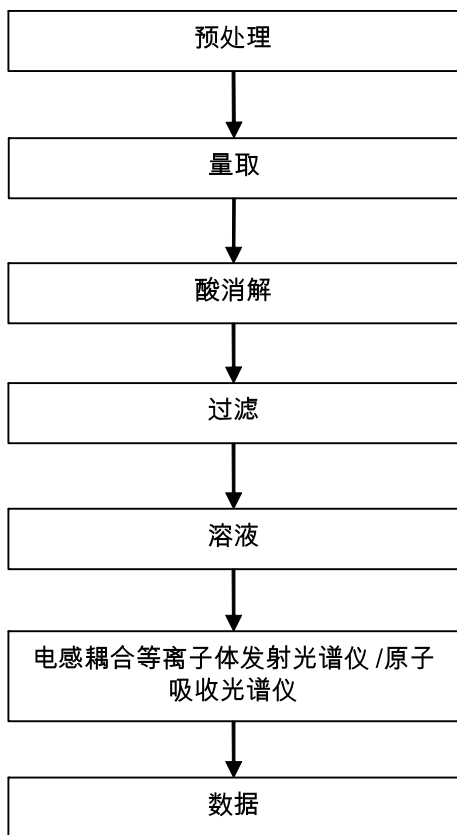


Unless otherwise agreed in writing, this document is issued by the Company subject to its General Conditions of Service printed overleaf, available on request or accessible at <https://www.sgs.com/en/Terms-and-Conditions>. Attention is drawn to the limitation of liability, indemnification and jurisdiction issues defined therein. Any holder of this document is advised that information contained hereon reflects the Company's findings at the time of its intervention only and within the limits of Client's instructions, if any. The Company's sole responsibility is to its Client and this document does not exonerate parties to a transaction from exercising all their rights and obligations under the transaction documents. This document cannot be reproduced except in full, without prior written approval of the Company. Any unauthorized alteration, forgery or falsification of the content or appearance of this document is unlawful and offenders may be prosecuted to the fullest extent of the law. Unless otherwise stated the results shown in this test report refer only to the sample(s) tested.

Attention: To check the authenticity of testing / inspection report & certificate, please contact us at telephone: (86-755) 8307 1443, or email: CN.Doccheck@sgs.com

附件

元素检测流程图



Unless otherwise agreed in writing, this document is issued by the Company subject to its General Conditions of Service printed overleaf, available on request or accessible at <https://www.sgs.com/en/Terms-and-Conditions>. Attention is drawn to the limitation of liability, indemnification and jurisdiction issues defined therein. Any holder of this document is advised that information contained hereon reflects the Company's findings at the time of its intervention only and within the limits of Client's instructions, if any. The Company's sole responsibility is to its Client and this document does not exonerate parties to a transaction from exercising all their rights and obligations under the transaction documents. This document cannot be reproduced except in full, without prior written approval of the Company. Any unauthorized alteration, forgery or falsification of the content or appearance of this document is unlawful and offenders may be prosecuted to the fullest extent of the law. Unless otherwise stated the results shown in this test report refer only to the sample(s) tested.

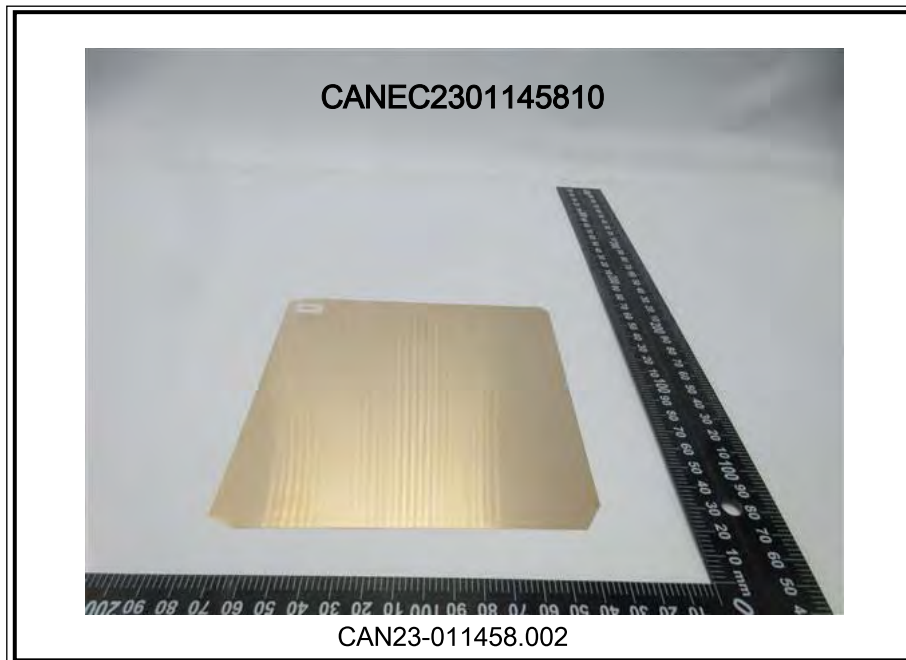
Attention: To check the authenticity of testing / inspection report & certificate, please contact us at telephone: (86-755) 8307 1443, or email: CN.Doccheck@sgs.com

检测报告

编号: CANEC2301145810

日期: 2023年02月08日 第9页,共9页

样品照片:



此照片仅限于随SGS正本报告使用

*** 报告结束 ***



Unless otherwise agreed in writing, this document is issued by the Company subject to its General Conditions of Service printed overleaf, available on request or accessible at <https://www.sgs.com/en/Terms-and-Conditions>. Attention is drawn to the limitation of liability, indemnification and jurisdiction issues defined therein. Any holder of this document is advised that information contained hereon reflects the Company's findings at the time of its intervention only and within the limits of Client's instructions, if any. The Company's sole responsibility is to its Client and this document does not exonerate parties to a transaction from exercising all their rights and obligations under the transaction documents. This document cannot be reproduced except in full, without prior written approval of the Company. Any unauthorized alteration, forgery or falsification of the content or appearance of this document is unlawful and offenders may be prosecuted to the fullest extent of the law. Unless otherwise stated the results shown in this test report refer only to the sample(s) tested.

Attention: To check the authenticity of testing /inspection report & certificate, please contact us at telephone: (86-755) 8307 1443, or email: CN.Doccheck@sgs.com

Test Report

No.: ETR23101900

Date: 12-Jan-2023

Page: 1 of 7

DEXERIALS CORPORATION

1724 SHIMOTSUBOYAMA, SHIMOTSUKE-SHI, TOCHIGI 323-0194, JAPAN

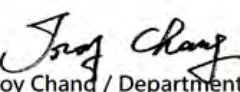
The following sample(s) was/were submitted and identified by the applicant as:

Sample Name : ADHESIVE
Style/Item No. : G9000 SERIES(G9000,G9000 C,G9000-SY,G9000W,G9010,G9011)
Lot No. : 2B02
The Testing Sample : G9000-SY

Sample Receiving Date : 06-Jan-2023
Testing Period : 06-Jan-2023 to 12-Jan-2023

Test Requested : (1) As specified by client, with reference to RoHS Directive 2011/65/EU Annex II to determine Cadmium, Lead, Mercury, Cr(VI), PBBs, PBDEs contents in the submitted sample(s).
(2) As specified by client, to test Halogen-Fluorine, Chlorine, Bromine, Iodine in the submitted sample.

Test Results : Please refer to following pages.


Troy Chang / Department Manager
Signed for and on behalf of
SGS TAIWAN LTD.
Chemical Laboratory - Taipei



PIN CODE: 8FC901EA

This document is issued by the Company subject to its General Conditions of Service printed overleaf, available on request or accessible at <https://www.sgs.com.tw/terms-of-service> and, for electronic format documents, subject to Terms and Conditions for Electronic Documents at <https://www.sgs.com.tw/terms-of-service>. Attention is drawn to the limitation of liability, indemnification and jurisdiction issues defined therein. Any holder of this document is advised that information contained hereon reflects the Company's findings at the time of its intervention only and within the limits of client's instruction, if any. The Company's sole responsibility is to its Client and this document does not exonerate parties to a transaction from exercising all their rights and obligations under the transaction documents. This document cannot be reproduced, except in full, without prior written approval of the Company. Any unauthorized alteration, forgery or falsification of the content or appearance of this document is unlawful and offenders may be prosecuted to the fullest extent of the law. Unless otherwise stated the results shown in this test report refer only to the sample(s) tested.

Test Report

No.: ETR23101900

Date: 12-Jan-2023

Page: 2 of 7

DEXERIALS CORPORATION

1724 SHIMOTSUBOYAMA, SHIMOTSUKE-SHI, TOCHIGI 323-0194, JAPAN

Test Part Description

No.1 : TRANSPARENT DOUBLE SIDED ADHESIVE (EXCLUDING THE RELEASE LINER)

Test Result(s)

Test Item(s)	Method	Unit	MDL	Result
				No.1
Cadmium (Cd) (CAS No.: 7440-43-9)	With reference to IEC 62321-5: 2013, analysis was performed by ICP-OES.	mg/kg	2	n.d.
Lead (Pb) (CAS No.: 7439-92-1)		mg/kg	2	n.d.
Mercury (Hg) (CAS No.: 7439-97-6)	With reference to IEC 62321-4: 2013+ AMD1: 2017, analysis was performed by ICP-OES.	mg/kg	2	n.d.
Hexavalent Chromium Cr(VI) (CAS No.: 18540-29-9)	With reference to IEC 62321-7-2: 2017, analysis was performed by UV-VIS.	mg/kg	8	n.d.
Monobromobiphenyl	With reference to IEC 62321-6: 2015, analysis was performed by GC/MS.	mg/kg	5	n.d.
Dibromobiphenyl		mg/kg	5	n.d.
Tribromobiphenyl		mg/kg	5	n.d.
Tetrabromobiphenyl		mg/kg	5	n.d.
Pentabromobiphenyl		mg/kg	5	n.d.
Hexabromobiphenyl		mg/kg	5	n.d.
Heptabromobiphenyl		mg/kg	5	n.d.
Octabromobiphenyl		mg/kg	5	n.d.
Nonabromobiphenyl		mg/kg	5	n.d.
Decabromobiphenyl		mg/kg	5	n.d.
Sum of PBBs		mg/kg	-	n.d.
Monobromodiphenyl ether	With reference to IEC 62321-6: 2015, analysis was performed by GC/MS.	mg/kg	5	n.d.
Dibromodiphenyl ether		mg/kg	5	n.d.
Tribromodiphenyl ether		mg/kg	5	n.d.
Tetrabromodiphenyl ether		mg/kg	5	n.d.
Pentabromodiphenyl ether		mg/kg	5	n.d.
Hexabromodiphenyl ether		mg/kg	5	n.d.
Heptabromodiphenyl ether		mg/kg	5	n.d.
Octabromodiphenyl ether		mg/kg	5	n.d.
Nonabromodiphenyl ether		mg/kg	5	n.d.
Decabromodiphenyl ether		mg/kg	5	n.d.
Sum of PBDEs		mg/kg	-	n.d.

This document is issued by the Company subject to its General Conditions of Service printed overleaf, available on request or accessible at <https://www.sgs.com.tw/terms-of-service> and, for electronic format documents, subject to Terms and Conditions for Electronic Documents at <https://www.sgs.com.tw/terms-of-service>. Attention is drawn to the limitation of liability, indemnification and jurisdiction issues defined therein. Any holder of this document is advised that information contained hereon reflects the Company's findings at the time of its intervention only and within the limits of client's instruction, if any. The Company's sole responsibility is to its Client and this document does not exonerate parties to a transaction from exercising all their rights and obligations under the transaction documents. This document cannot be reproduced, except in full, without prior written approval of the Company. Any unauthorized alteration, forgery or falsification of the content or appearance of this document is unlawful and offenders may be prosecuted to the fullest extent of the law. Unless otherwise stated the results shown in this test report refer only to the sample(s) tested.

Test Report

No.: ETR23101900

Date: 12-Jan-2023

Page: 3 of 7

DEXERIALS CORPORATION

1724 SHIMOTSUBOYAMA, SHIMOTSUKE-SHI, TOCHIGI 323-0194, JAPAN

Test Item(s)	Method	Unit	MDL	Result
				No.1
Fluorine (F) (CAS No.: 14762-94-8)	With reference to BS EN 14582: 2016, analysis was performed by IC.	mg/kg	50	n.d.
Chlorine (Cl) (CAS No.: 22537-15-1)	With reference to BS EN 14582: 2016, analysis was performed by IC.	mg/kg	50	n.d.
Bromine (Br) (CAS No.: 10097-32-2)	With reference to BS EN 14582: 2016, analysis was performed by IC.	mg/kg	50	n.d.
Iodine (I) (CAS No.: 14362-44-8)	With reference to BS EN 14582: 2016, analysis was performed by IC.	mg/kg	50	n.d.

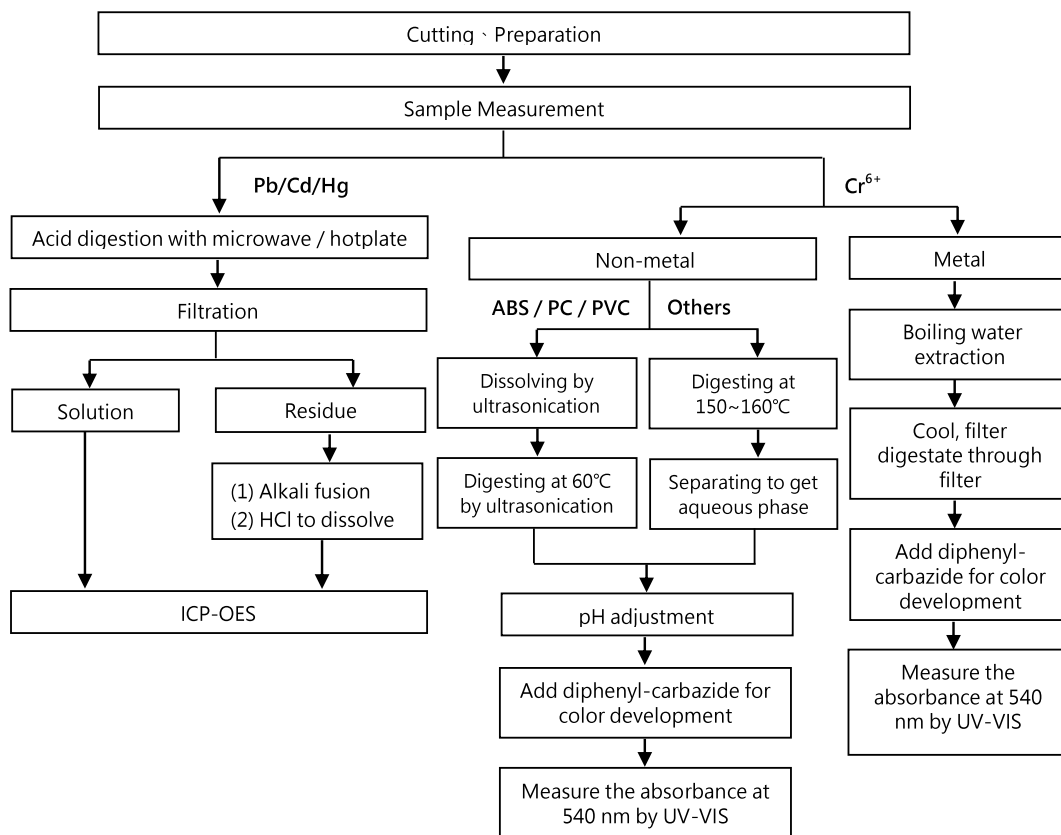
Note :

1. mg/kg = ppm ; 0.1wt% = 0.1% = 1000ppm
2. MDL = Method Detection Limit
3. n.d. = Not Detected (Less than MDL)
4. "-" = Not Regulated

This document is issued by the Company subject to its General Conditions of Service printed overleaf, available on request or accessible at <https://www.sgs.com.tw/terms-of-service> and, for electronic format documents, subject to Terms and Conditions for Electronic Documents at <https://www.sgs.com.tw/terms-of-service>. Attention is drawn to the limitation of liability, indemnification and jurisdiction issues defined therein. Any holder of this document is advised that information contained hereon reflects the Company's findings at the time of its intervention only and within the limits of client's instruction, if any. The Company's sole responsibility is to its Client and this document does not exonerate parties to a transaction from exercising all their rights and obligations under the transaction documents. This document cannot be reproduced, except in full, without prior written approval of the Company. Any unauthorized alteration, forgery or falsification of the content or appearance of this document is unlawful and offenders may be prosecuted to the fullest extent of the law. Unless otherwise stated the results shown in this test report refer only to the sample(s) tested.

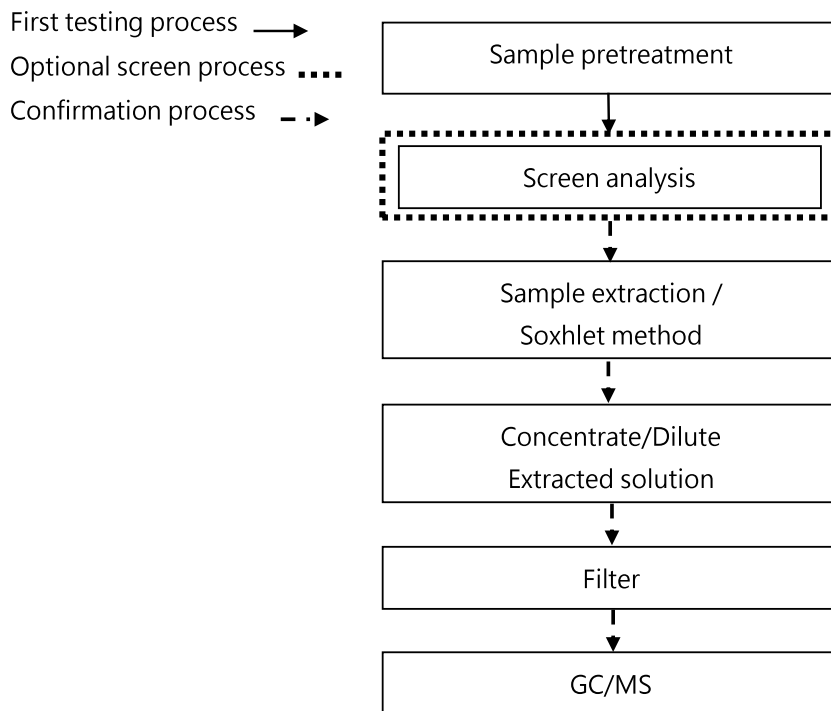
Analytical flow chart of Heavy Metal

These samples were dissolved totally by pre-conditioning method according to below flow chart.
(Cr⁶⁺ test method excluded)



This document is issued by the Company subject to its General Conditions of Service printed overleaf, available on request or accessible at <https://www.sgs.com.tw/terms-of-service> and, for electronic format documents, subject to Terms and Conditions for Electronic Documents at <https://www.sgs.com.tw/terms-of-service>. Attention is drawn to the limitation of liability, indemnification and jurisdiction issues defined therein. Any holder of this document is advised that information contained hereon reflects the Company's findings at the time of its intervention only and within the limits of client's instruction, if any. The Company's sole responsibility is to its Client and this document does not exonerate parties to a transaction from exercising all their rights and obligations under the transaction documents. This document cannot be reproduced, except in full, without prior written approval of the Company. Any unauthorized alteration, forgery or falsification of the content or appearance of this document is unlawful and offenders may be prosecuted to the fullest extent of the law. Unless otherwise stated the results shown in this test report refer only to the sample(s) tested.

Analytical flow chart – PBBs / PBDEs

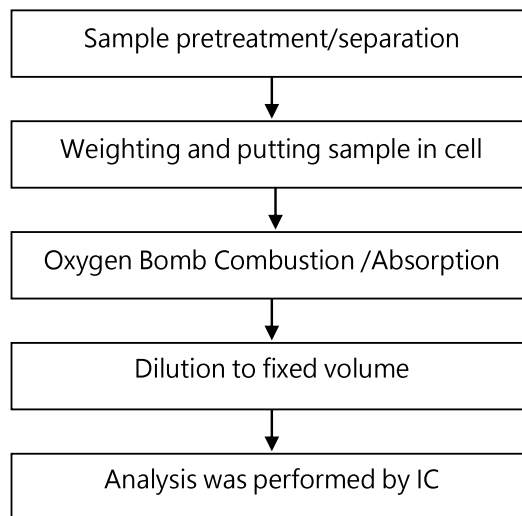


This document is issued by the Company subject to its General Conditions of Service printed overleaf, available on request or accessible at <https://www.sgs.com.tw/terms-of-service> and, for electronic format documents, subject to Terms and Conditions for Electronic Documents at <https://www.sgs.com.tw/terms-of-service>. Attention is drawn to the limitation of liability, indemnification and jurisdiction issues defined therein. Any holder of this document is advised that information contained hereon reflects the Company's findings at the time of its intervention only and within the limits of client's instruction, if any. The Company's sole responsibility is to its Client and this document does not exonerate parties to a transaction from exercising all their rights and obligations under the transaction documents. This document cannot be reproduced, except in full, without prior written approval of the Company. Any unauthorized alteration, forgery or falsification of the content or appearance of this document is unlawful and offenders may be prosecuted to the fullest extent of the law. Unless otherwise stated the results shown in this test report refer only to the sample(s) tested.

DEXERIALS CORPORATION

1724 SHIMOTSUBOYAMA, SHIMOTSUKE-SHI, TOCHIGI 323-0194, JAPAN

Analytical flow chart of Halogen



This document is issued by the Company subject to its General Conditions of Service printed overleaf, available on request or accessible at <https://www.sgs.com.tw/terms-of-service> and, for electronic format documents, subject to Terms and Conditions for Electronic Documents at <https://www.sgs.com.tw/terms-of-service>. Attention is drawn to the limitation of liability, indemnification and jurisdiction issues defined therein. Any holder of this document is advised that information contained hereon reflects the Company's findings at the time of its intervention only and within the limits of client's instruction, if any. The Company's sole responsibility is to its Client and this document does not exonerate parties to a transaction from exercising all their rights and obligations under the transaction documents. This document cannot be reproduced, except in full, without prior written approval of the Company. Any unauthorized alteration, forgery or falsification of the content or appearance of this document is unlawful and offenders may be prosecuted to the fullest extent of the law. Unless otherwise stated the results shown in this test report refer only to the sample(s) tested.

Test Report

No.: ETR23101900

Date: 12-Jan-2023

Page: 7 of 7

DEXERIALS CORPORATION

1724 SHIMOTSUBOYAMA, SHIMOTSUKE-SHI, TOCHIGI 323-0194, JAPAN

* The tested sample / part is marked by an arrow if it's shown on the photo. *

ETR23101900



** End of Report **

This document is issued by the Company subject to its General Conditions of Service printed overleaf, available on request or accessible at <https://www.sgs.com.tw/terms-of-service> and, for electronic format documents, subject to Terms and Conditions for Electronic Documents at <https://www.sgs.com.tw/terms-of-service>. Attention is drawn to the limitation of liability, indemnification and jurisdiction issues defined therein. Any holder of this document is advised that information contained hereon reflects the Company's findings at the time of its intervention only and within the limits of client's instruction, if any. The Company's sole responsibility is to its Client and this document does not exonerate parties to a transaction from exercising all their rights and obligations under the transaction documents. This document cannot be reproduced, except in full, without prior written approval of the Company. Any unauthorized alteration, forgery or falsification of the content or appearance of this document is unlawful and offenders may be prosecuted to the fullest extent of the law. Unless otherwise stated the results shown in this test report refer only to the sample(s) tested.



Test Report

No.: ETR23103764

Date: 19-Jan-2023

Page: 1 of 5

DEXERIALS CORPORATION

1724 SHIMOTSUBOYAMA, SHIMOTSUKE-SHI, TOCHIGI 323-0194, JAPAN

The following sample(s) was/were submitted and identified by the applicant as:


Sample Name : ADHESIVE
Style/Item No. : G9000 SERIES(G9000,G9000 C,G9000-SY,G9000W,G9010,G9011)
Lot No. : 2C02
The Testing Sample : G9000-SY

=====
Sample Receiving Date : 12-Jan-2023
Testing Period : 12-Jan-2023 to 19-Jan-2023

Test Requested : (1) As specified by client, with reference to RoHS 2011/65/EU Annex II and amending Directive (EU) 2015/863 to determine DBP, BBP, DEHP, DIBP contents in the submitted sample(s).

(2) Please refer to next pages for the other item(s).

Test Results : Please refer to following pages.


Troy Chang / Department Manager
Signed for and on behalf of
SGS TAIWAN LTD.
Chemical Laboratory - Taipei



PIN CODE: 47DD438A

This document is issued by the Company subject to its General Conditions of Service printed overleaf, available on request or accessible at <https://www.sgs.com.tw/terms-of-service> and, for electronic format documents, subject to Terms and Conditions for Electronic Documents at <https://www.sgs.com.tw/terms-of-service>. Attention is drawn to the limitation of liability, indemnification and jurisdiction issues defined therein. Any holder of this document is advised that information contained hereon reflects the Company's findings at the time of its intervention only and within the limits of client's instruction, if any. The Company's sole responsibility is to its Client and this document does not exonerate parties to a transaction from exercising all their rights and obligations under the transaction documents. This document cannot be reproduced, except in full, without prior written approval of the Company. Any unauthorized alteration, forgery or falsification of the content or appearance of this document is unlawful and offenders may be prosecuted to the fullest extent of the law. Unless otherwise stated the results shown in this test report refer only to the sample(s) tested.

Test Report

No.: ETR23103764

Date: 19-Jan-2023

Page: 2 of 5

DEXERIALS CORPORATION

1724 SHIMOTSUBOYAMA, SHIMOTSUKE-SHI, TOCHIGI 323-0194, JAPAN

Test Part Description

No.1 : TRANSPARENT DOUBLE SIDED ADHESIVE (EXCLUDING THE RELEASE LINER)

Test Result(s)

Test Item(s)	Method	Unit	MDL	Result
				No.1
Butyl benzyl phthalate (BBP) (CAS No.: 85-68-7)	With reference to IEC 62321-8: 2017, analysis was performed by GC/MS.	mg/kg	50	n.d.
Dibutyl phthalate (DBP) (CAS No.: 84-74-2)	With reference to IEC 62321-8: 2017, analysis was performed by GC/MS.	mg/kg	50	n.d.
Di-(2-ethylhexyl) phthalate (DEHP) (CAS No.: 117-81-7)	With reference to IEC 62321-8: 2017, analysis was performed by GC/MS.	mg/kg	50	n.d.
Diisobutyl phthalate (DIBP) (CAS No.: 84-69-5)	With reference to IEC 62321-8: 2017, analysis was performed by GC/MS.	mg/kg	50	n.d.
Diisodecyl phthalate (DIDP) (CAS No.: 26761-40-0, 68515-49-1)	With reference to IEC 62321-8: 2017, analysis was performed by GC/MS.	mg/kg	50	n.d.
Diisononyl phthalate (DINP) (CAS No.: 28553-12-0, 68515-48-0)	With reference to IEC 62321-8: 2017, analysis was performed by GC/MS.	mg/kg	50	n.d.
Di-n-octyl phthalate (DNOP) (CAS No.: 117-84-0)	With reference to IEC 62321-8: 2017, analysis was performed by GC/MS.	mg/kg	50	n.d.
Di-ethyl phthalate (DEP) (CAS No.: 84-66-2)	With reference to IEC 62321-8: 2017, analysis was performed by GC/MS.	mg/kg	50	n.d.
Dimethyl phthalate (DMP) (CAS No.: 131-11-3)	With reference to IEC 62321-8: 2017, analysis was performed by GC/MS.	mg/kg	50	n.d.
Antimony (Sb) (CAS No.: 7440-36-0)	With reference to US EPA 3052: 1996, analysis was performed by ICP-OES.	mg/kg	2	n.d.

Note :

1. mg/kg = ppm ; 0.1wt% = 0.1% = 1000ppm
2. MDL = Method Detection Limit
3. n.d. = Not Detected (Less than MDL)

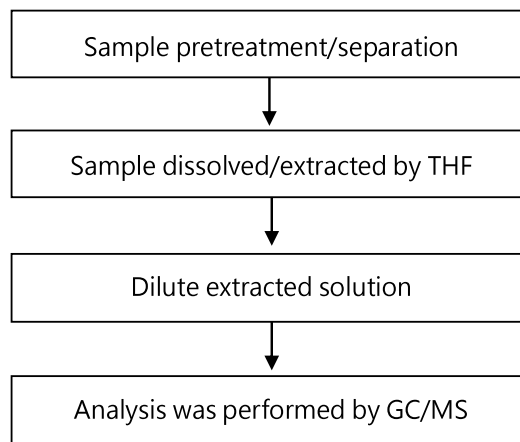
This document is issued by the Company subject to its General Conditions of Service printed overleaf, available on request or accessible at <https://www.sgs.com.tw/terms-of-service> and, for electronic format documents, subject to Terms and Conditions for Electronic Documents at <https://www.sgs.com.tw/terms-of-service>. Attention is drawn to the limitation of liability, indemnification and jurisdiction issues defined therein. Any holder of this document is advised that information contained hereon reflects the Company's findings at the time of its intervention only and within the limits of client's instruction, if any. The Company's sole responsibility is to its Client and this document does not exonerate parties to a transaction from exercising all their rights and obligations under the transaction documents. This document cannot be reproduced, except in full, without prior written approval of the Company. Any unauthorized alteration, forgery or falsification of the content or appearance of this document is unlawful and offenders may be prosecuted to the fullest extent of the law. Unless otherwise stated the results shown in this test report refer only to the sample(s) tested.

DEXERIALS CORPORATION

1724 SHIMOTSUBOYAMA, SHIMOTSUKE-SHI, TOCHIGI 323-0194, JAPAN

Analytical flow chart - Phthalate

【Test method: IEC 62321-8】

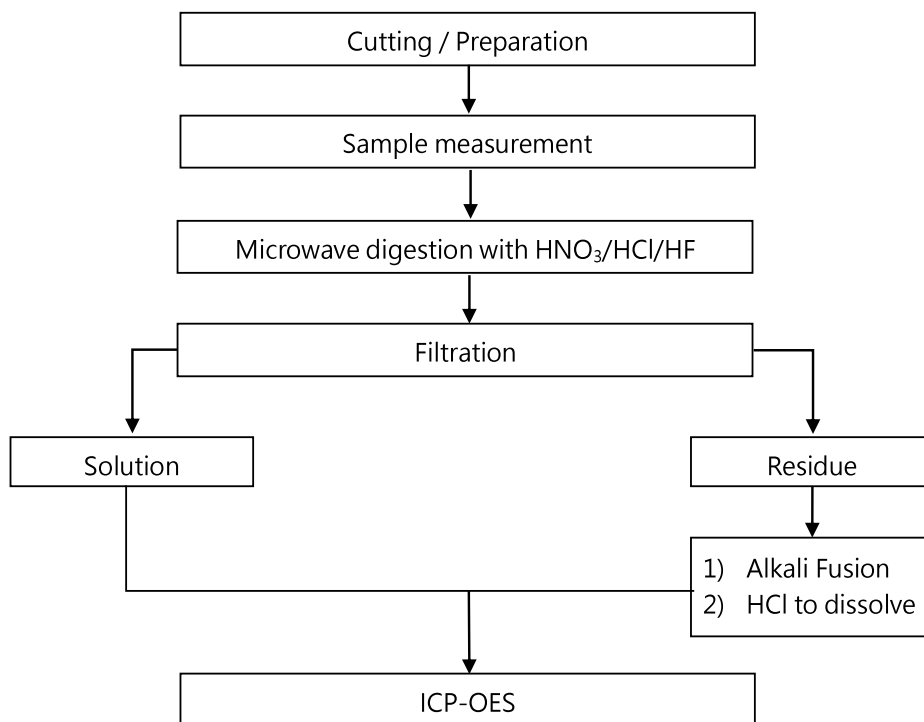


This document is issued by the Company subject to its General Conditions of Service printed overleaf, available on request or accessible at <https://www.sgs.com.tw/terms-of-service> and, for electronic format documents, subject to Terms and Conditions for Electronic Documents at <https://www.sgs.com.tw/terms-of-service>. Attention is drawn to the limitation of liability, indemnification and jurisdiction issues defined therein. Any holder of this document is advised that information contained hereon reflects the Company's findings at the time of its intervention only and within the limits of client's instruction, if any. The Company's sole responsibility is to its Client and this document does not exonerate parties to a transaction from exercising all their rights and obligations under the transaction documents. This document cannot be reproduced, except in full, without prior written approval of the Company. Any unauthorized alteration, forgery or falsification of the content or appearance of this document is unlawful and offenders may be prosecuted to the fullest extent of the law. Unless otherwise stated the results shown in this test report refer only to the sample(s) tested.

Analytical flow chart of Elements (Heavy Metal included)

These samples were dissolved totally by pre-conditioning method according to below flow chart.

【Reference method : US EPA 3051A · US EPA 3052】



* US EPA 3051A method does not add HF.

Test Report

No.: ETR23103764

Date: 19-Jan-2023

Page: 5 of 5

DEXERIALS CORPORATION

1724 SHIMOTSUBOYAMA, SHIMOTSUKE-SHI, TOCHIGI 323-0194, JAPAN

* The tested sample / part is marked by an arrow if it's shown on the photo. *

ETR23103764



** End of Report **

This document is issued by the Company subject to its General Conditions of Service printed overleaf, available on request or accessible at <https://www.sgs.com.tw/terms-of-service> and, for electronic format documents, subject to Terms and Conditions for Electronic Documents at <https://www.sgs.com.tw/terms-of-service>. Attention is drawn to the limitation of liability, indemnification and jurisdiction issues defined therein. Any holder of this document is advised that information contained hereon reflects the Company's findings at the time of its intervention only and within the limits of client's instruction, if any. The Company's sole responsibility is to its Client and this document does not exonerate parties to a transaction from exercising all their rights and obligations under the transaction documents. This document cannot be reproduced, except in full, without prior written approval of the Company. Any unauthorized alteration, forgery or falsification of the content or appearance of this document is unlawful and offenders may be prosecuted to the fullest extent of the law. Unless otherwise stated the results shown in this test report refer only to the sample(s) tested.



Samsung HW-600C Antenna Report

Engineer : Roy

Report date : 2023/12/15 REV6

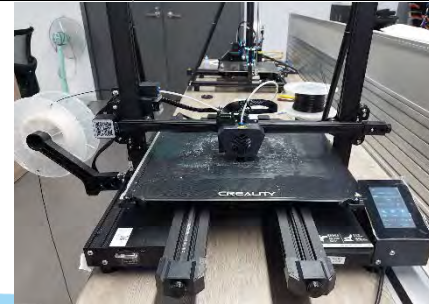
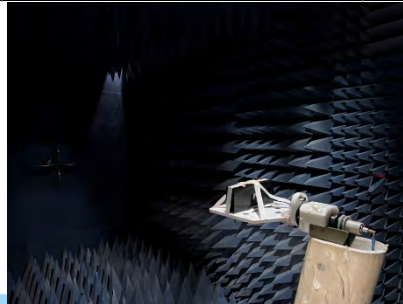


Revision History

Revision	Date	Engineer	Description
01	2022/12/9	Johnson	New Release
02	2023/1/9	Irene	Data Update
03	2023/02/10	Emily	Add Equipment list
04	2023/06/30	Aiden	Redesign antenna for DUT
05	2023/08/23	Wade	Change antenna position
06	2023/12/15	Roy	Change antenna pattern

Equipment list

Device	Ttype/Model	Manufacturer	test Item
Network Analyzer	N5230A	Agilent Technologies	S-parameter & passive antenna test
Anechoic Chamber	FFC-600L	WavePro Inc.	passive antenna test
Turntable	NSI-SC-5606-3DZ	NSI-MI	
Measurement SW	NSI 2000	NSI-MI	
Dual Polarization Vivaldi Antenna 0.6~8GHz	-	WavePro Inc.	
Computer Monitor	HS-CM145	CCTVINDIA	
Industrial PC	IPC-610BP	Advantech Co., Ltd	
Standard Beam Controller (SBC)	NSI-RF-5918	NSI-MI	
Antenna Range Controller (ARC Box)	NSI-SC-5911-4	NSI-MI	
RF Cable 240in 22GHz	UFA210C-1-2400-300300	Carlisle Interconnect Tech.	
RF Cable 240in 22GHz	UFA210C-1-2400-300300	Carlisle Interconnect Tech.	
RF Cable 60cm 26.5GHz	EC-A5-60-1678	E-INSTRUMENT TECH LTD.	
3D Printer	CR-6-MAX	CREALITY	3D printing

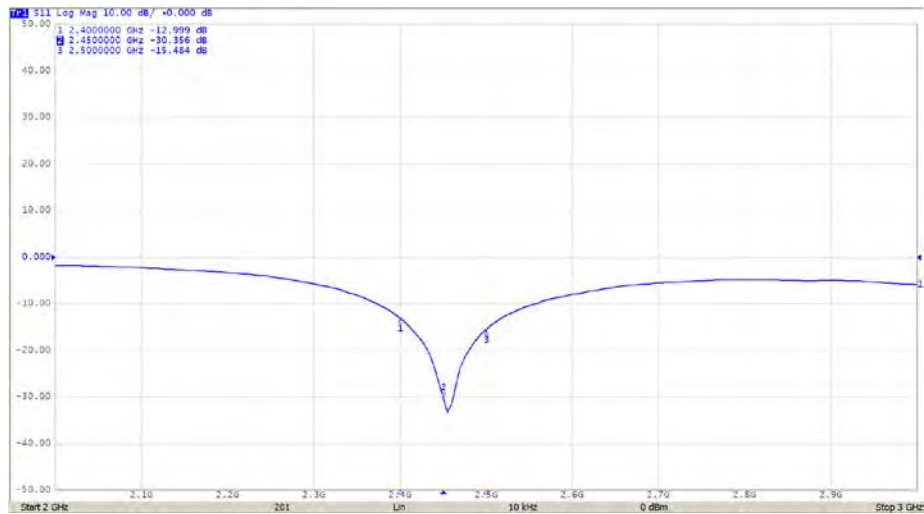


Antenna specification

Item	Specification
Operating Frequency(GHz)	2.4-2.5
Bandwidth	100MHz (Min.)
Return Loss	10 dB (Min.)
Polarization	Linear
Azimuth Bandwidth	Omni-directional
Peak Gain	4.48 dBi (Max)
Impedance	50Ω
Material	PCB
Maximum Power	1W
V.S.W.R	2 : 1
Radiation	Omni directional
Efficiency	52 %(Max)
Operating Temperature	-10~60°C
Storage temp	-10~70°C

Antenna Measurement Vector Network Analyzer

S-parameter



Frequency (MHz)	2400	2450	2500
S11(dB)	-12.9	-30.3	-15.4

The antenna anechoic chamber measurement

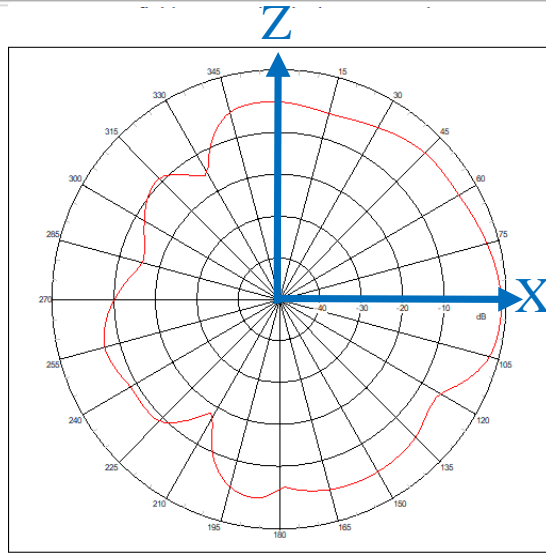
3D Gain Total

Frequency(GHz)	Gain(dBi)	3D-avgGain(dBi)	Efficiency
2.4	3.85	-3.56	44
2.41	4.25	-3.2	48
2.42	4.45	-2.96	51
2.43	4.48	-2.87	52
2.44	4.39	-2.87	52
2.45	4.11	-3.04	50
2.46	3.88	-3.13	49
2.47	3.84	-3	50
2.48	3.41	-3.25	47
2.49	3.62	-3.4	46
2.5	3.34	-3.52	44

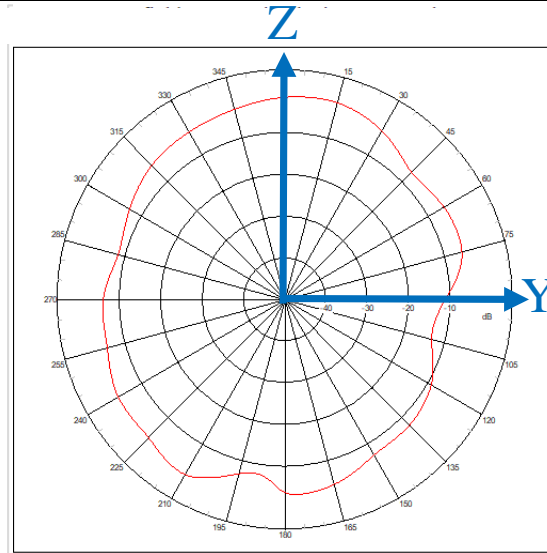
Antenna Pattern

Frequency : 2400MHz

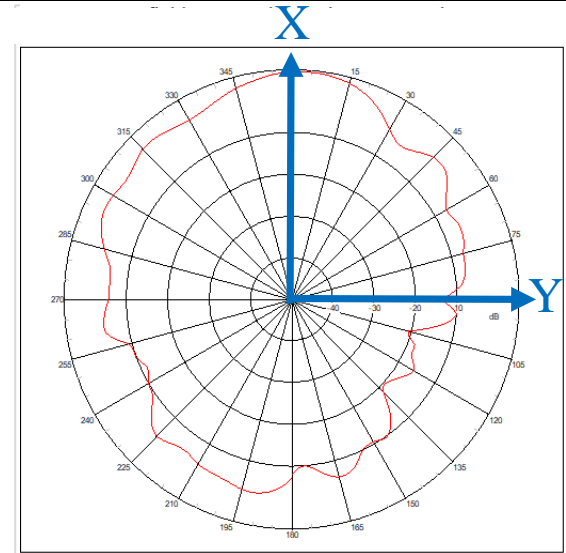
XZ-plane



YZ-plane



XY-plane



Far-field amplitude limits:

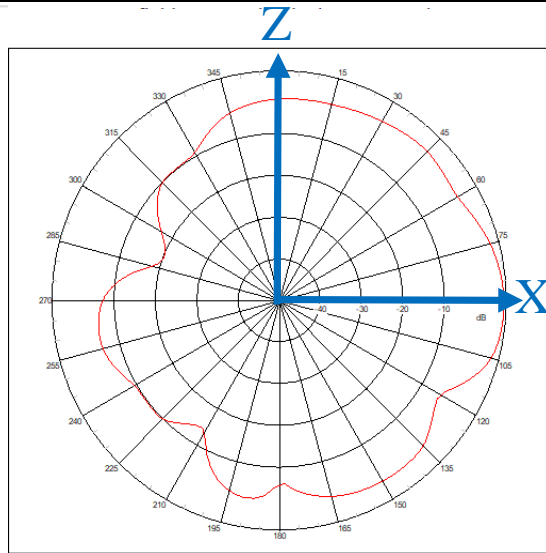
Max: 5dB

min: -50dB

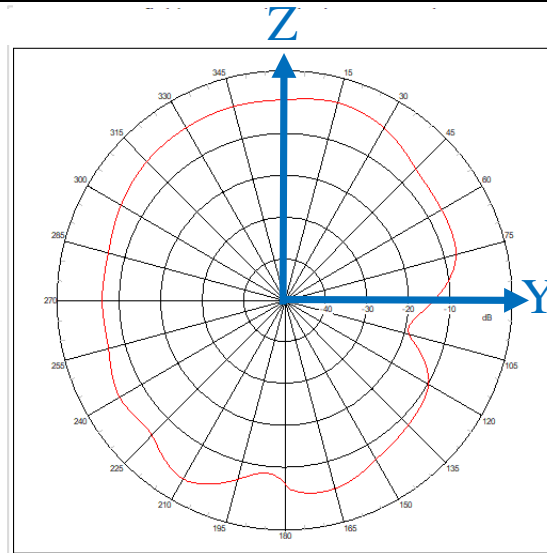
Antenna Pattern

Frequency : 2450MHz

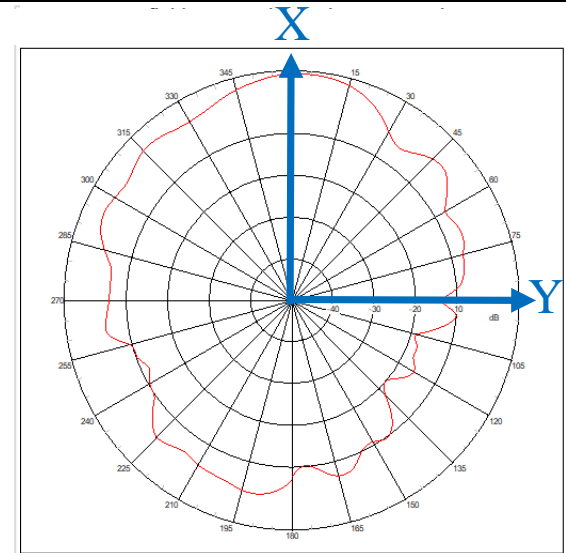
XZ-plane



YZ-plane



XY-plane



Far-field amplitude limits:

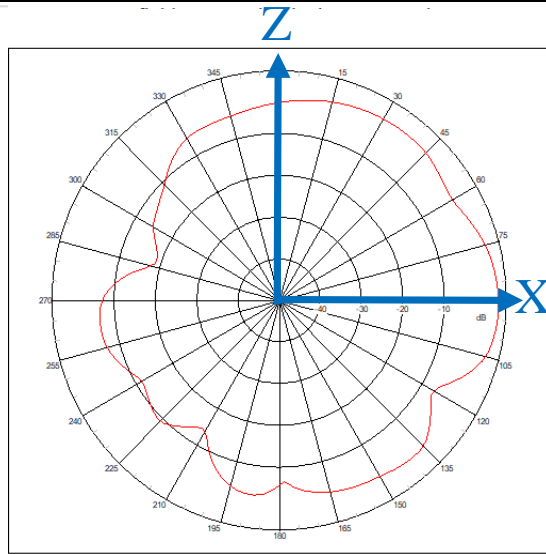
Max: 5dB

min: -50dB

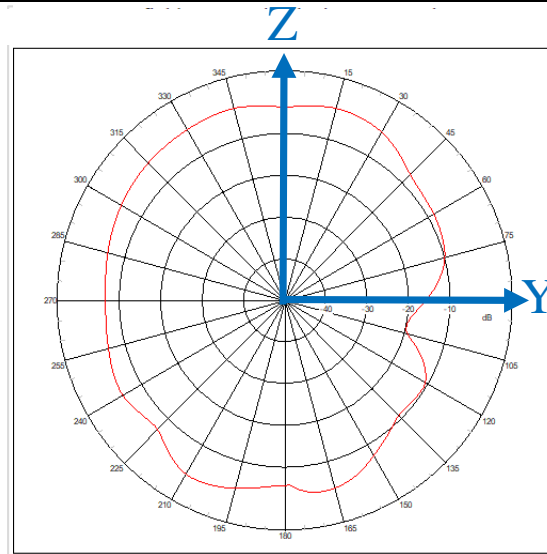
Antenna Pattern

Frequency : 2500MHz

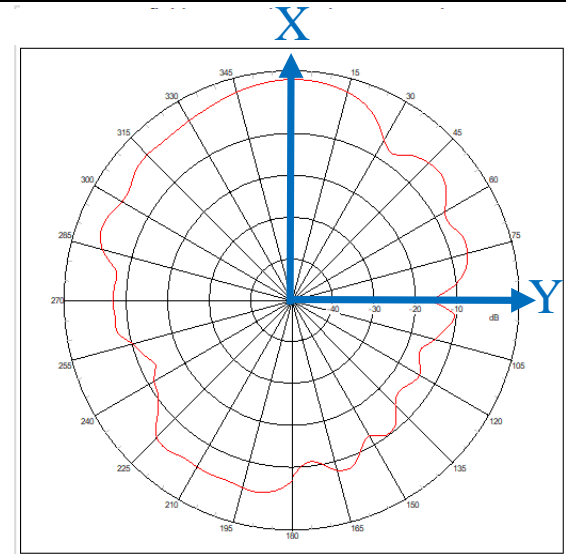
XZ-plane



YZ-plane



XY-plane



Far-field amplitude limits:

Max: 5dB

min: -50dB



創造完美連結

MAKING THE PERFECT CONNECTION

www.wieson.com

N° 2016/70254.3

AFNOR Certification certifies that the management system implemented by:
AFNOR Certification certifie que le système de management mis en place par :

WIESON TECHNOLOGIES (DONG GUAN) CO., LTD.
东莞骅国电子有限公司

Unified Social Credit Code / Code Crédit Social Unifié / 统一社会信用代码 : 914419006181620014

for the following activities:
pour les activités suivantes :

DESIGN, MANUFACTURING AND SALES OF ELECTRONIC AND AUTOMOTIVE CONNECTORS, CABLES,
WIRE HARNESSSES, RF (RADIO FREQUENCY) AND ANTENNA PRODUCTS, PLASTIC INJECTION,
STAMPING PARTS, PLASTIC & HARDWARE MOLDS
电子和车用连接器、连接线、线束、无线射频天线产品、注塑成型部件、
冲压部件, 塑胶五金模具的设计、生产和销售

has been assessed and found to meet the requirements of:
a été évalué et jugé conforme aux exigences requises par :

ISO 9001 : 2015

and is developed on the following locations:
et est déployé sur les sites suivants :

XINBAOWEI INDUSTRIAL BUILDING, HUANGANG INDUSTRIAL ZONE, HOUIE TOWN,
DONGGUAN CITY, GUANGDONG PROVINCE, CHINA
中国广东省东莞市厚街镇环岗工业区新保威工业城

This certificate is valid from (year/month/day)
Ce certificat est valable à compter du (année/mois/jour)

2021-01-18

Until
Jusqu'au

2024-01-17



SignatureFournisseur



Scan this QR code to
check the validity of the
certificate.

Julien NIZRI
Managing Director of AFNOR Certification
Directeur Général d'AFNOR Certification

The electronic certificate only, available at www.afnor.org, attests in real-time that the company is certified. Seul le certificat électronique, consultable sur www.afnor.org, fait foi en temps réel de la certification de l'organisme. 管理系统COFRAC认可号码: n°4-0001. COFRAC accreditation n°4-0001. Management Systems Certification. Scope available on www.cofrac.fr. Accréditation COFRAC n°4-0001. Certification de Systèmes de management. Portée disponible sur www.cofrac.fr. 本证书信息可在国家认监委网站 WWW.CNCA.GOV.CN查询. The certificate information is available on www.cnca.gov.cn. L'information relative au certificat est disponible sur le site www.cnca.gov.cn. The certified organization shall regularly approve any surveillance audit and be found to conform with the requirements of the standard for the certificate to be maintained. L'entreprise certifiée doit autoriser les audits de surveillance prévus et être jugée conforme aux exigences du référentiel pour que le certificat soit maintenu. 获证组织必须定期接受监督审核并经审核合格此证书方继续有效. AFAQ is a registered trademark. AFAQ est une marque déposée. CERTIF 1493-6- 07/2020