

GSM1900

Frequency: 1880 MHz; Duty Cycle: 1:8.00018; Room Ambient Temperature: 24.0°C; Liquid Temperature: 23.0°C

Medium parameters used: $f = 1880$ MHz; $\sigma = 1.367$ mho/m; $\epsilon_r = 39.768$; $\rho = 1000$ kg/m³

DASY5 Configuration:

- Area Scan setting - Find Secondary Maximum Within: 2.0 dB and with a peak SAR value greater than 0.0012W/kg
- Electronics: DAE4 Sn1259; Calibrated: 2/13/2012
- Probe: EX3DV4 - SN3686; ConvF(7.51, 7.51, 7.51); Calibrated: 2/16/2012
- Sensor-Surface: 2.5mm (Mechanical Surface Detection)
- Phantom: SAM; Type: QD000P40CD; Serial: 1629

Head/Left Touch/GMSK Voice/Ch 661/Area Scan (7x11x1): Measurement grid: dx=15mm, dy=15mm

Maximum value of SAR (measured) = 0.420 mW/g

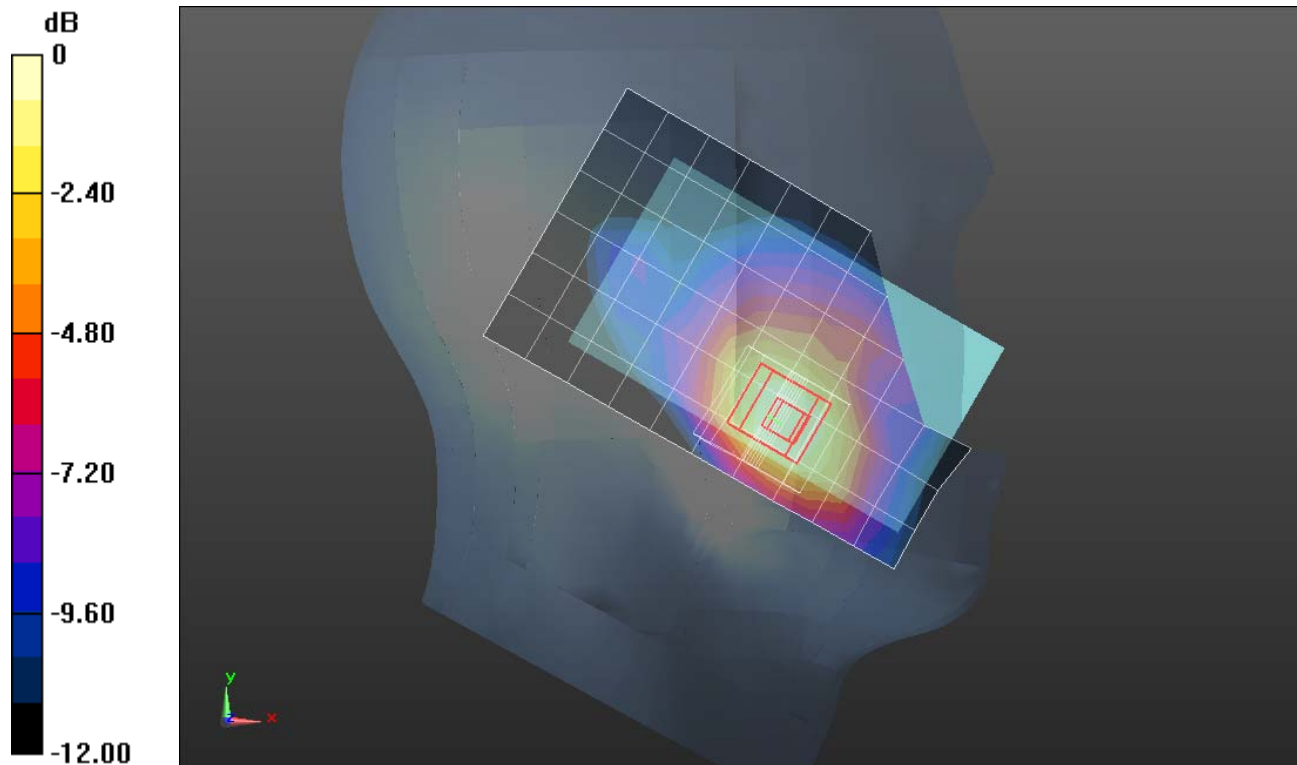
Head/Left Touch/GMSK Voice/Ch 661/Zoom Scan (5x5x7)/Cube 0: Measurement grid: dx=8mm, dy=8mm, dz=5mm

Reference Value = 17.599 V/m; Power Drift = 0.02 dB

Peak SAR (extrapolated) = 0.6010

SAR(1 g) = 0.395 mW/g; SAR(10 g) = 0.244 mW/g

Maximum value of SAR (measured) = 0.485 mW/g



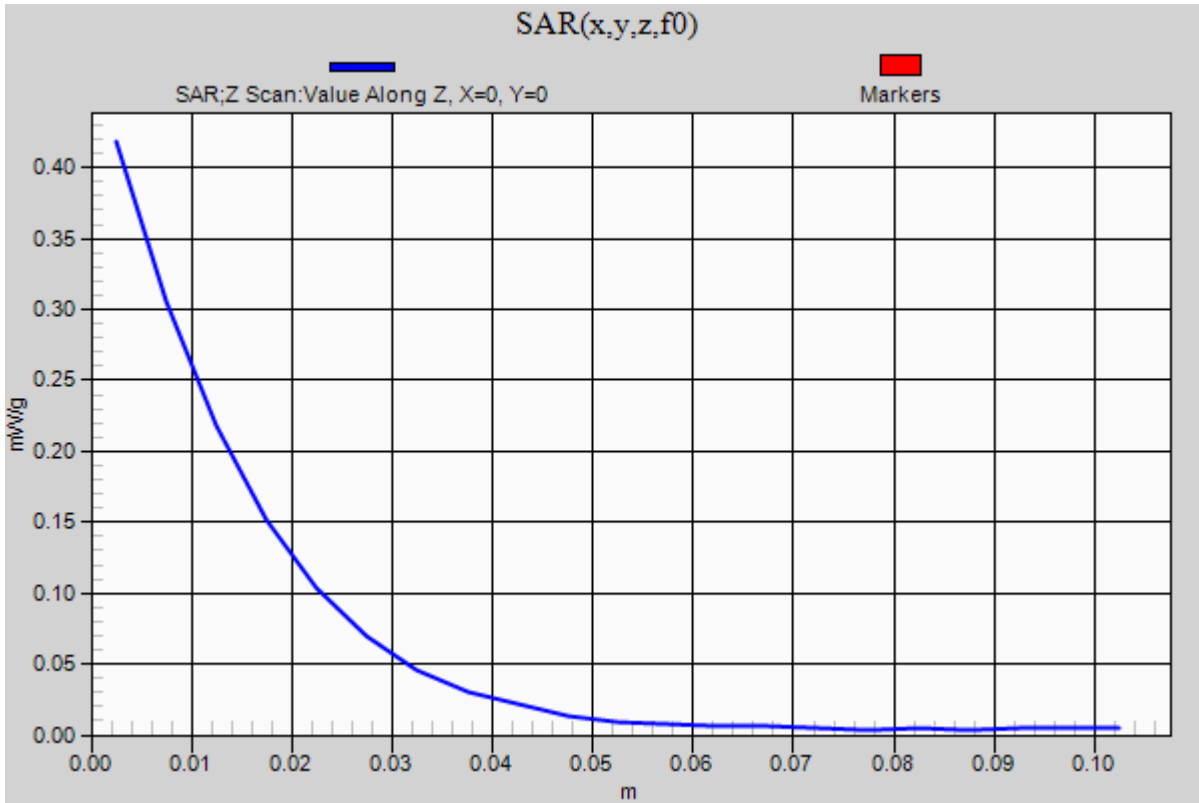
0 dB = 0.490mW/g = -6.20 dB mW/g

GSM1900

Frequency: 1880 MHz; Duty Cycle: 1:8.00018

Head/Left Touch/GMSK Voice/Ch 661/Z Scan (1x1x21): Measurement grid: dx=20mm, dy=20mm, dz=5mm

Maximum value of SAR (measured) = 0.418 mW/g



GSM1900

Frequency: 1880 MHz; Duty Cycle: 1:8.00018; Room Ambient Temperature: 24.0°C; Liquid Temperature: 23.0°C
Medium parameters used: $f = 1880$ MHz; $\sigma = 1.367$ mho/m; $\epsilon_r = 39.768$; $\rho = 1000$ kg/m³

DASY5 Configuration:

- Area Scan setting - Find Secondary Maximum Within: 2.0 dB and with a peak SAR value greater than 0.0012W/kg
- Electronics: DAE4 Sn1259; Calibrated: 2/13/2012
- Probe: EX3DV4 - SN3686; ConvF(7.51, 7.51, 7.51); Calibrated: 2/16/2012
- Sensor-Surface: 2.5mm (Mechanical Surface Detection)
- Phantom: SAM; Type: QD000P40CD; Serial: 1629

Head/Left Tilt/GMSK Voice/Ch 661/Area Scan (7x11x1): Measurement grid: dx=15mm, dy=15mm
Maximum value of SAR (measured) = 0.138 mW/g

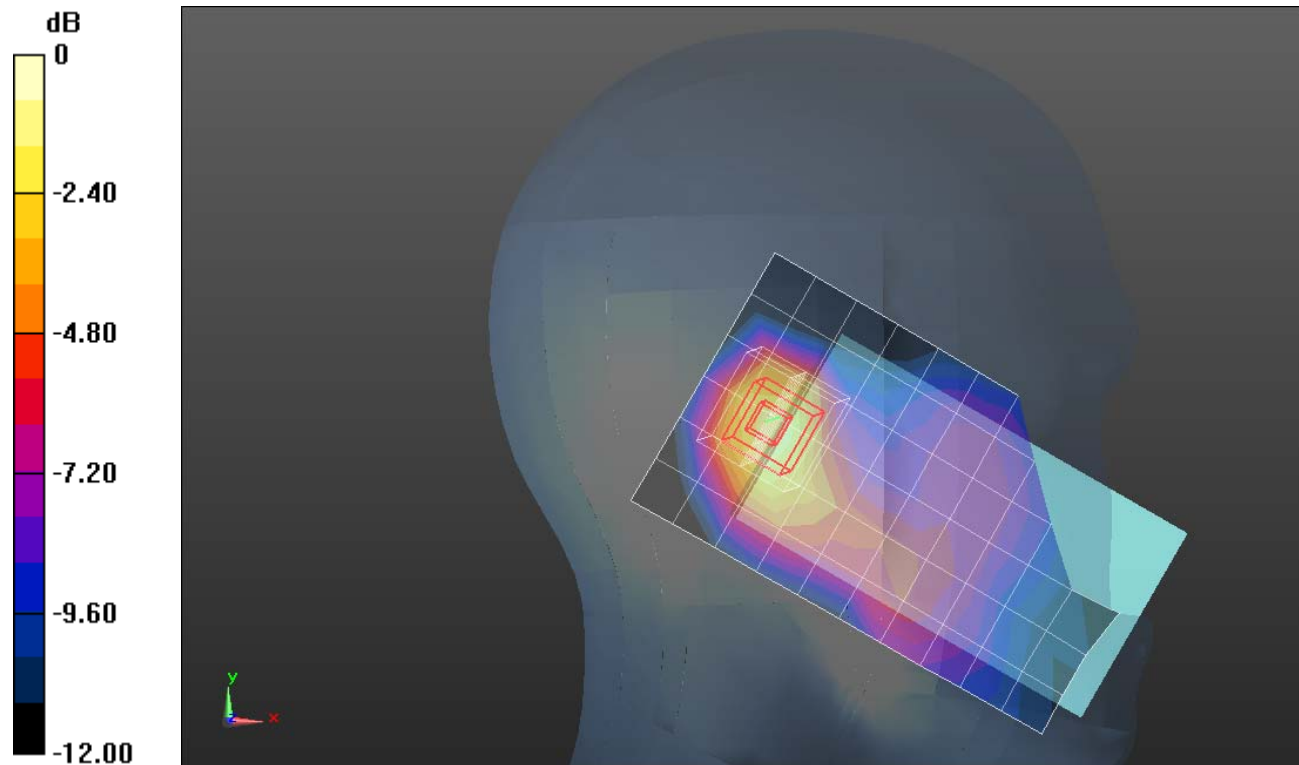
Head/Left Tilt/GMSK Voice/Ch 661/Zoom Scan (5x5x7)/Cube 0: Measurement grid: dx=8mm, dy=8mm, dz=5mm

Reference Value = 10.249 V/m; Power Drift = -0.05 dB

Peak SAR (extrapolated) = 0.2130

SAR(1 g) = 0.130 mW/g; SAR(10 g) = 0.075 mW/g

Maximum value of SAR (measured) = 0.166 mW/g



0 dB = 0.170mW/g = -15.39 dB mW/g

GSM1900

Frequency: 1880 MHz; Duty Cycle: 1:8.00018; Room Ambient Temperature: 24.0°C; Liquid Temperature: 23.0°C
Medium parameters used: $f = 1880$ MHz; $\sigma = 1.367$ mho/m; $\epsilon_r = 39.768$; $\rho = 1000$ kg/m³

DASY5 Configuration:

- Area Scan setting - Find Secondary Maximum Within: 2.0 dB and with a peak SAR value greater than 0.0012W/kg
- Electronics: DAE4 Sn1259; Calibrated: 2/13/2012
- Probe: EX3DV4 - SN3686; ConvF(7.51, 7.51, 7.51); Calibrated: 2/16/2012
- Sensor-Surface: 2.5mm (Mechanical Surface Detection)
- Phantom: SAM; Type: QD000P40CD; Serial: 1629

Head/Right Touch/GMSK Voice/Ch 661/Area Scan (7x11x1): Measurement grid: dx=15mm, dy=15mm
Maximum value of SAR (measured) = 0.264 mW/g

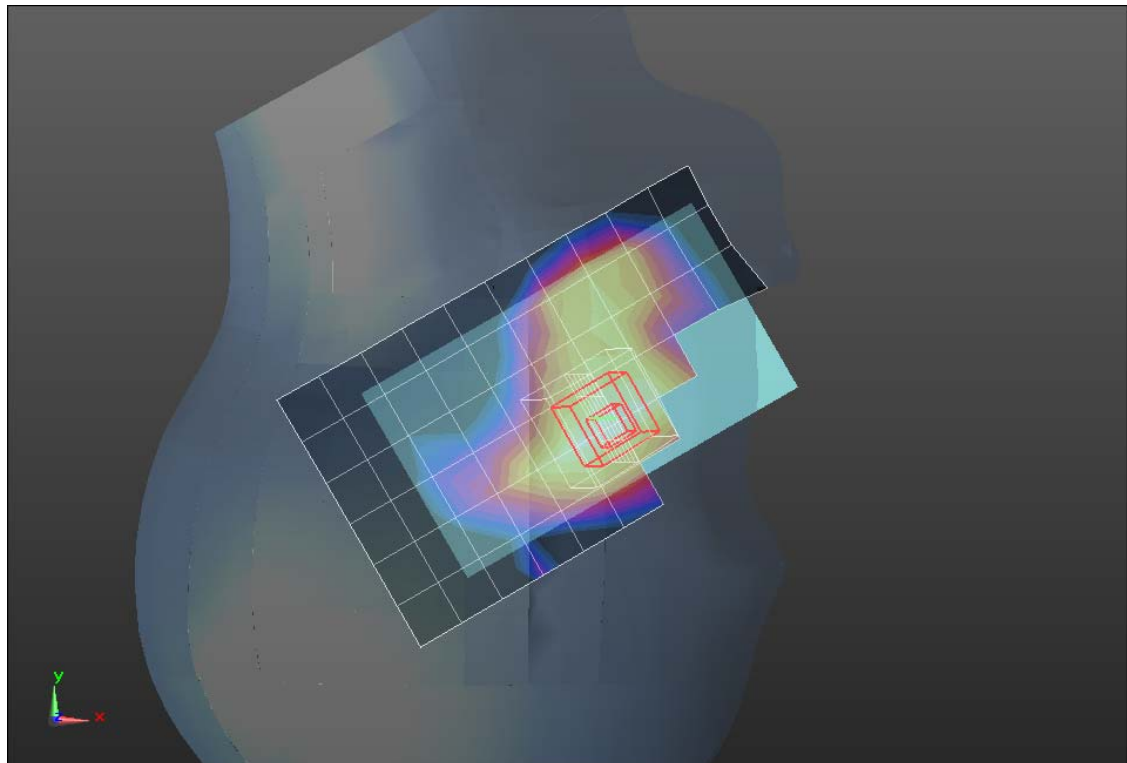
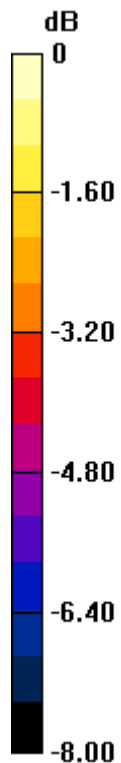
Head/Right Touch/GMSK Voice/Ch 661/Zoom Scan (5x5x7)/Cube 0: Measurement grid: dx=8mm, dy=8mm, dz=5mm

Reference Value = 14.023 V/m; Power Drift = -0.12 dB

Peak SAR (extrapolated) = 0.3260

SAR(1 g) = 0.217 mW/g; SAR(10 g) = 0.143 mW/g

Maximum value of SAR (measured) = 0.260 mW/g



0 dB = 0.260mW/g = -11.70 dB mW/g

GSM1900

Frequency: 1880 MHz; Duty Cycle: 1:8.00018; Room Ambient Temperature: 24.0°C; Liquid Temperature: 23.0°C

Medium parameters used: $f = 1880$ MHz; $\sigma = 1.367$ mho/m; $\epsilon_r = 39.768$; $\rho = 1000$ kg/m³

DASY5 Configuration:

- Area Scan setting - Find Secondary Maximum Within: 2.0 dB and with a peak SAR value greater than 0.0012W/kg
- Electronics: DAE4 Sn1259; Calibrated: 2/13/2012
- Probe: EX3DV4 - SN3686; ConvF(7.51, 7.51, 7.51); Calibrated: 2/16/2012
- Sensor-Surface: 2.5mm (Mechanical Surface Detection)
- Phantom: SAM; Type: QD000P40CD; Serial: 1629

Head/Right Tilt/GMSK Voice/Ch 661/Area Scan (7x11x1): Measurement grid: dx=15mm, dy=15mm

Maximum value of SAR (measured) = 0.236 mW/g

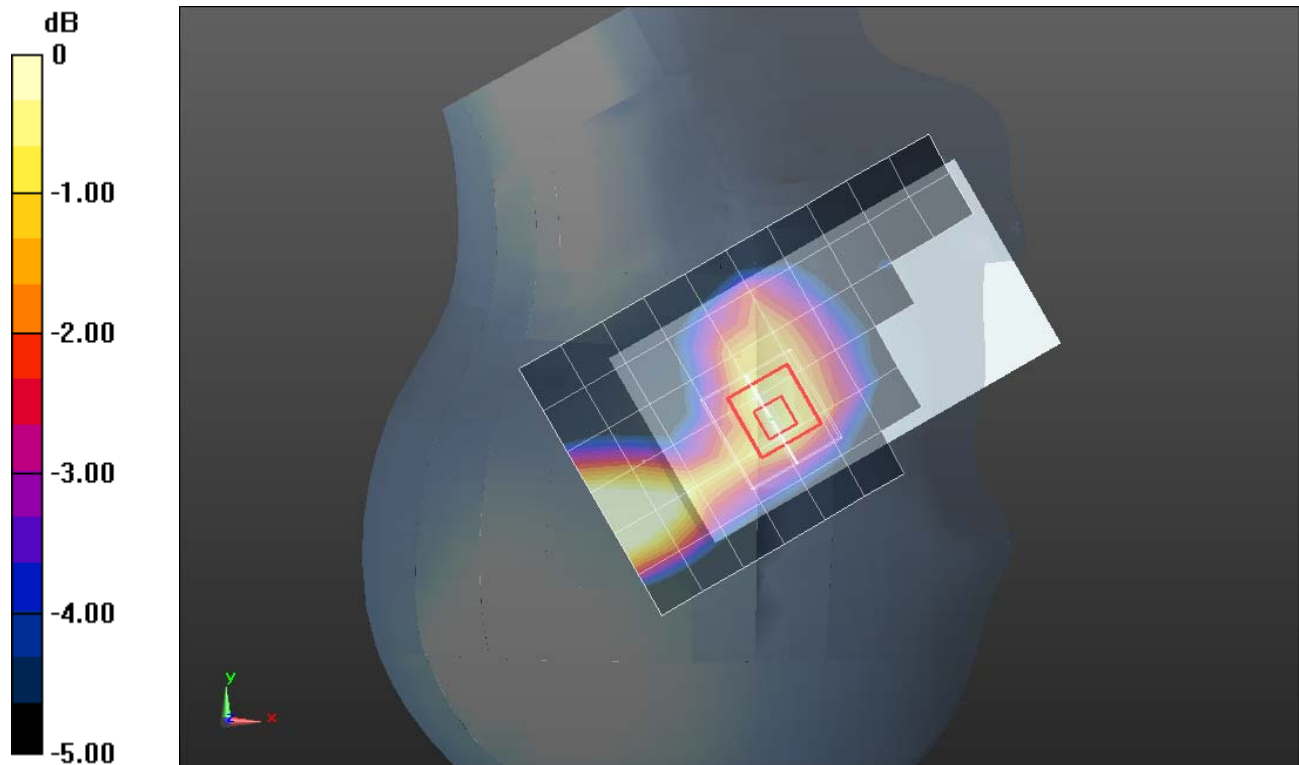
Head/Right Tilt/GMSK Voice/Ch 661/Zoom Scan (5x5x7)/Cube 0: Measurement grid: dx=8mm, dy=8mm, dz=5mm

Reference Value = 13.247 V/m; Power Drift = 0.0064 dB

Peak SAR (extrapolated) = 0.2030

SAR(1 g) = 0.135 mW/g; SAR(10 g) = 0.087 mW/g

Maximum value of SAR (measured) = 0.165 mW/g



0 dB = 0.170mW/g = -15.39 dB mW/g

GSM1900

Frequency: 1880 MHz; Duty Cycle: 1:8.00018; Room Ambient Temperature: 24.0°C; Liquid Temperature: 23.0°C
Medium parameters used: $f = 1880$ MHz; $\sigma = 1.479$ mho/m; $\epsilon_r = 51.173$; $\rho = 1000$ kg/m³
DASY5 Configuration:

- Area Scan setting - Find Secondary Maximum Within: 2.0 dB and with a peak SAR value greater than 0.0012W/kg
- Electronics: DAE4 Sn1259; Calibrated: 2/13/2012
- Probe: EX3DV4 - SN3686; ConvF(7.04, 7.04, 7.04); Calibrated: 2/16/2012
- Sensor-Surface: 2.5mm (Mechanical Surface Detection)
- Phantom: ELI v5.0 (A); Type: QDOVA001BB; Serial: 1120

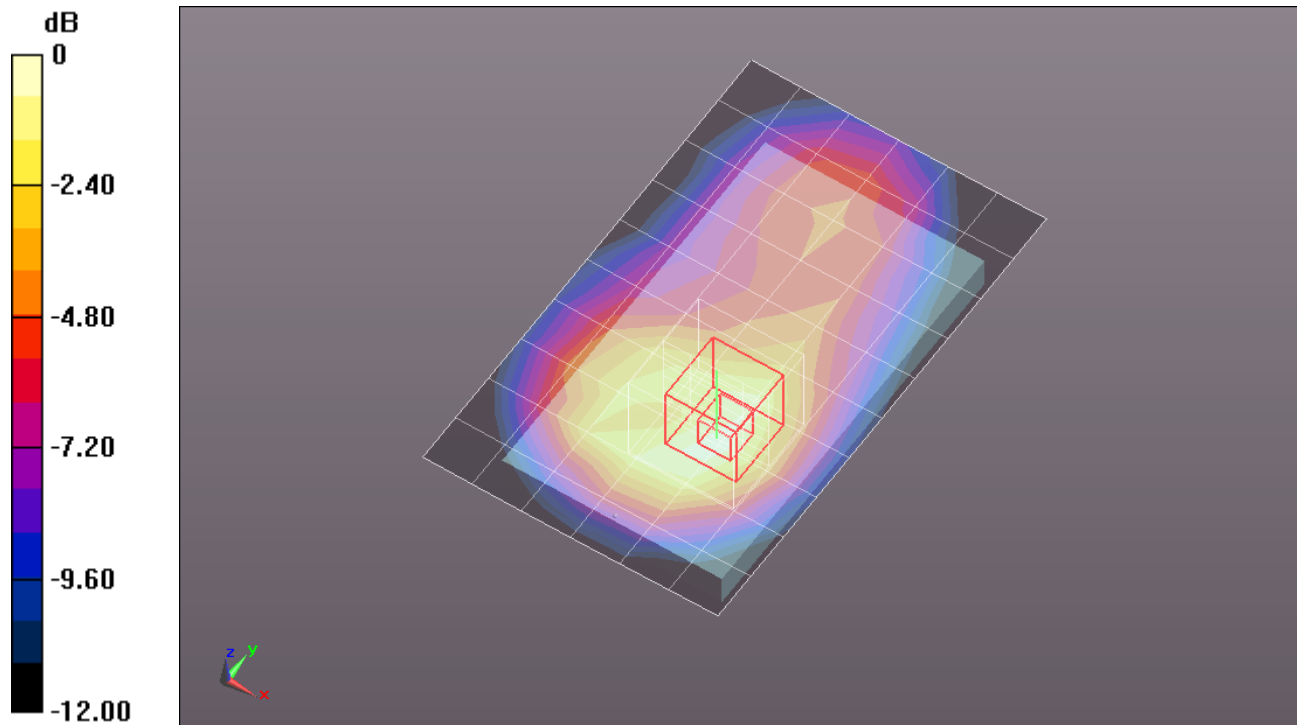
Body/Rear/GMSK Voice/10mm/Ch 661/Area Scan (7x11x1): Measurement grid: dx=15mm, dy=15mm
Maximum value of SAR (measured) = 0.566 mW/g

Body/Rear/GMSK Voice/10mm/Ch 661/Zoom Scan (5x5x7)/Cube 0: Measurement grid: dx=8mm, dy=8mm, dz=5mm

Reference Value = 19.713 V/m; Power Drift = 0.03 dB
Peak SAR (extrapolated) = 0.7460

SAR(1 g) = 0.454 mW/g; SAR(10 g) = 0.264 mW/g

Maximum value of SAR (measured) = 0.579 mW/g



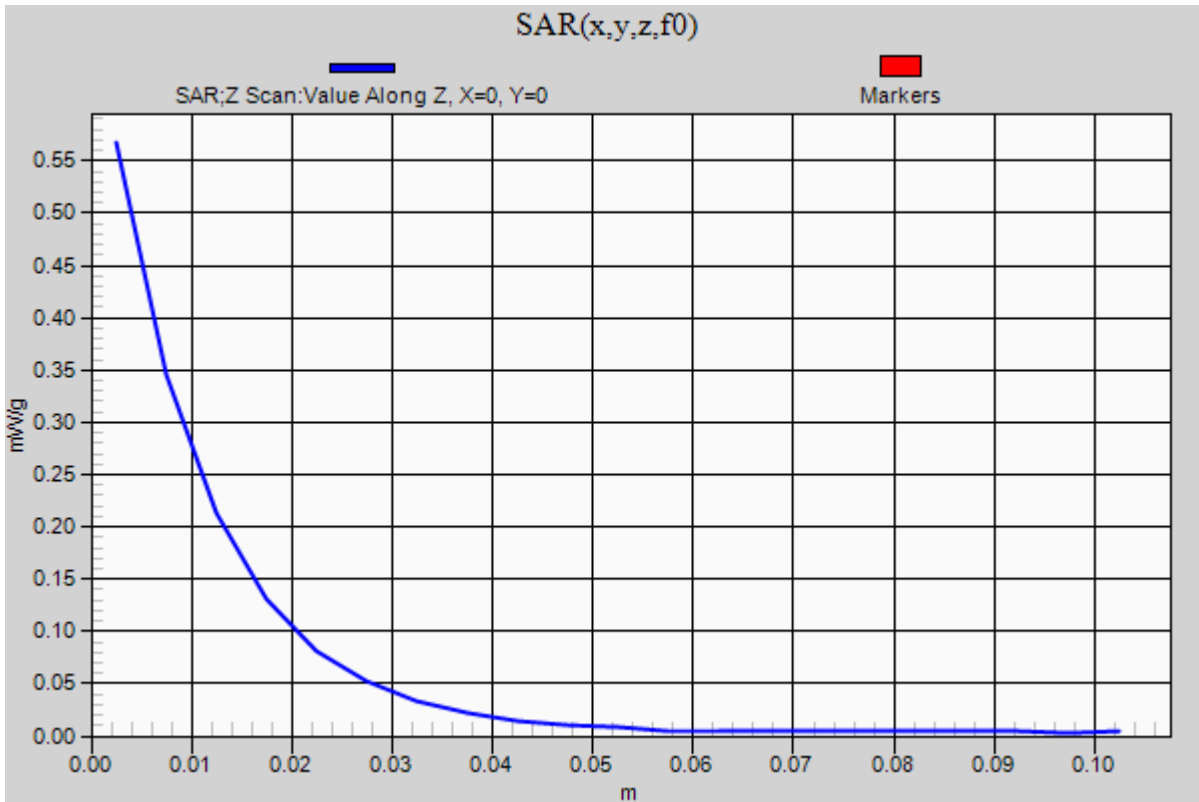
0 dB = 0.580mW/g = -4.73 dB mW/g

GSM1900

Frequency: 1880 MHz; Duty Cycle: 1:8.00018

Body/Rear/GMSK Voice/10mm/Ch 661/Z Scan (1x1x21): Measurement grid: dx=20mm, dy=20mm, dz=5mm

Maximum value of SAR (measured) = 0.567 mW/g



GSM1900

Frequency: 1880 MHz; Duty Cycle: 1:8.00018; Room Ambient Temperature: 24.0°C; Liquid Temperature: 23.0°C
Medium parameters used: $f = 1880$ MHz; $\sigma = 1.479$ mho/m; $\epsilon_r = 51.173$; $\rho = 1000$ kg/m³

DASY5 Configuration:

- Area Scan setting - Find Secondary Maximum Within: 2.0 dB and with a peak SAR value greater than 0.0012W/kg
- Electronics: DAE4 Sn1259; Calibrated: 2/13/2012
- Probe: EX3DV4 - SN3686; ConvF(7.04, 7.04, 7.04); Calibrated: 2/16/2012
- Sensor-Surface: 2.5mm (Mechanical Surface Detection)
- Phantom: ELI v5.0 (A); Type: QDOVA001BB; Serial: 1120

Body/Rear/GMSK Voice/10mm/Ch 661 with headset/Area Scan (7x11x1): Measurement grid:

dx=15mm, dy=15mm

Maximum value of SAR (measured) = 0.508 mW/g

Body/Rear/GMSK Voice/10mm/Ch 661 with headset/Zoom Scan (5x5x7)/Cube 0:

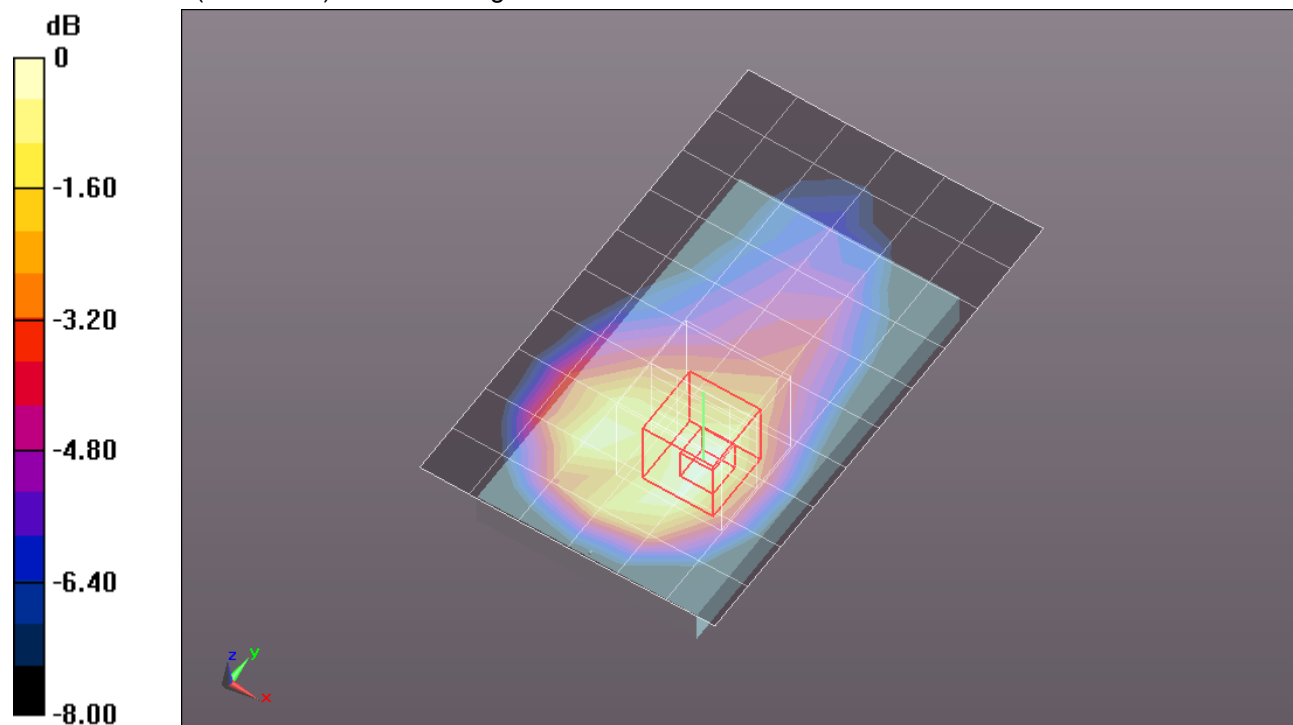
Measurement grid: dx=8mm, dy=8mm, dz=5mm

Reference Value = 18.738 V/m; Power Drift = -0.00064 dB

Peak SAR (extrapolated) = 0.6650

SAR(1 g) = 0.407 mW/g; SAR(10 g) = 0.240 mW/g

Maximum value of SAR (measured) = 0.520 mW/g



0 dB = 0.520mW/g = -5.68 dB mW/g

GSM1900

Frequency: 1880 MHz; Duty Cycle: 1:8.00018; Room Ambient Temperature: 24.0°C; Liquid Temperature: 23.0°C
Medium parameters used: $f = 1880$ MHz; $\sigma = 1.479$ mho/m; $\epsilon_r = 51.173$; $\rho = 1000$ kg/m³

DASY5 Configuration:

- Area Scan setting - Find Secondary Maximum Within: 2.0 dB and with a peak SAR value greater than 0.0012W/kg
- Electronics: DAE4 Sn1259; Calibrated: 2/13/2012
- Probe: EX3DV4 - SN3686; ConvF(7.04, 7.04, 7.04); Calibrated: 2/16/2012
- Sensor-Surface: 2.5mm (Mechanical Surface Detection)
- Phantom: ELI v5.0 (A); Type: QDOVA001BB; Serial: 1120

Body/Front/GMSK Voice/10mm/Ch 661/Area Scan (7x11x1): Measurement grid: dx=15mm, dy=15mm

Maximum value of SAR (measured) = 0.306 mW/g

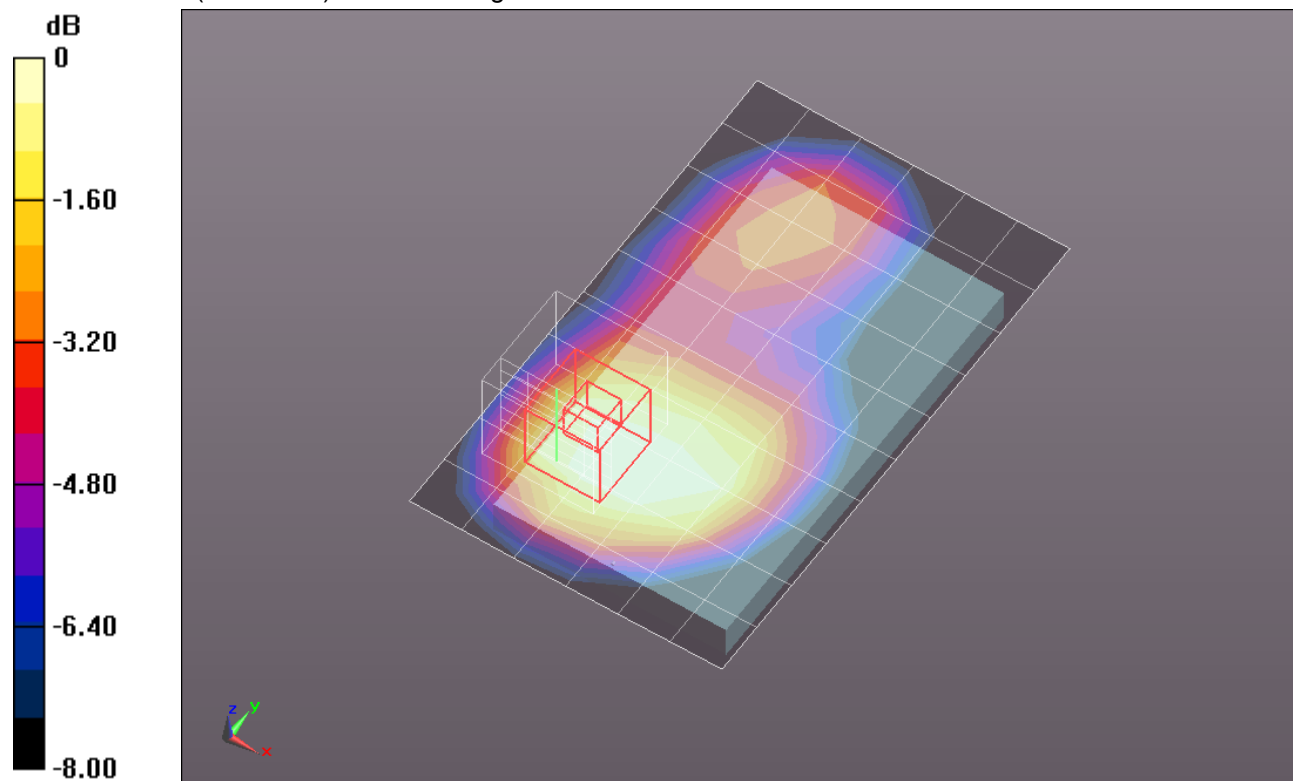
Body/Front/GMSK Voice/10mm/Ch 661/Zoom Scan (5x5x7)/Cube 0: Measurement grid: dx=8mm, dy=8mm, dz=5mm

Reference Value = 14.423 V/m; Power Drift = -0.04 dB

Peak SAR (extrapolated) = 0.4080

SAR(1 g) = 0.251 mW/g; SAR(10 g) = 0.158 mW/g

Maximum value of SAR (measured) = 0.315 mW/g



0 dB = 0.320mW/g = -9.90 dB mW/g

GSM1900

Frequency: 1850.2 MHz; Duty Cycle: 1:4.00037; Room Ambient Temperature: 24.0°C; Liquid Temperature: 23.0°C
Medium parameters used (interpolated): $f = 1850.2$ MHz; $\sigma = 1.447$ mho/m; $\epsilon_r = 51.277$; $\rho = 1000$ kg/m³

DASY5 Configuration:

- Area Scan setting - Find Secondary Maximum Within: 2.0 dB and with a peak SAR value greater than 0.0012W/kg
- Electronics: DAE4 Sn1259; Calibrated: 2/13/2012
- Probe: EX3DV4 - SN3686; ConvF(7.04, 7.04, 7.04); Calibrated: 2/16/2012
- Sensor-Surface: 2.5mm (Mechanical Surface Detection)
- Phantom: ELI v5.0 (A); Type: QDOVA001BB; Serial: 1120

Body/Rear/GPRS 2 Slot/10mm/Ch 512/Area Scan (7x11x1): Measurement grid: dx=15mm, dy=15mm

[Info: Interpolated medium parameters used for SAR evaluation.](#)

Maximum value of SAR (measured) = 1.084 mW/g

Body/Rear/GPRS 2 Slot/10mm/Ch 512/Zoom Scan (5x5x7)/Cube 0: Measurement grid: dx=8mm, dy=8mm, dz=5mm

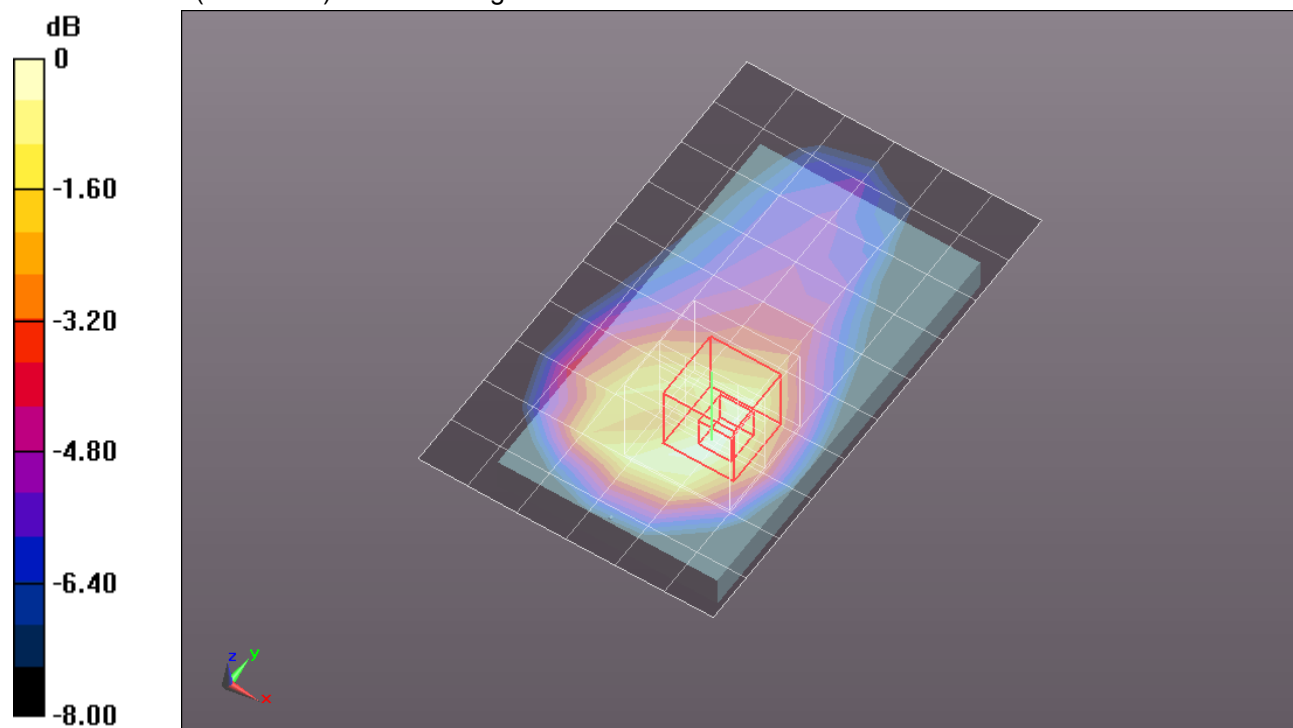
Reference Value = 27.820 V/m; Power Drift = -0.07 dB

Peak SAR (extrapolated) = 1.4450

SAR(1 g) = 0.883 mW/g; SAR(10 g) = 0.519 mW/g

[Info: Interpolated medium parameters used for SAR evaluation.](#)

Maximum value of SAR (measured) = 1.102 mW/g



0 dB = 1.100mW/g = 0.83 dB mW/g

GSM1900

Frequency: 1880 MHz; Duty Cycle: 1:4.00037; Room Ambient Temperature: 24.0°C; Liquid Temperature: 23.0°C
Medium parameters used: $f = 1880$ MHz; $\sigma = 1.479$ mho/m; $\epsilon_r = 51.173$; $\rho = 1000$ kg/m³

DASY5 Configuration:

- Area Scan setting - Find Secondary Maximum Within: 2.0 dB and with a peak SAR value greater than 0.0012W/kg
- Electronics: DAE4 Sn1259; Calibrated: 2/13/2012
- Probe: EX3DV4 - SN3686; ConvF(7.04, 7.04, 7.04); Calibrated: 2/16/2012
- Sensor-Surface: 2.5mm (Mechanical Surface Detection)
- Phantom: ELI v5.0 (A); Type: QDOVA001BB; Serial: 1120

Body/Rear/GPRS 2 Slot/10mm/Ch 661/Area Scan (7x11x1): Measurement grid: dx=15mm, dy=15mm
Maximum value of SAR (measured) = 1.118 mW/g

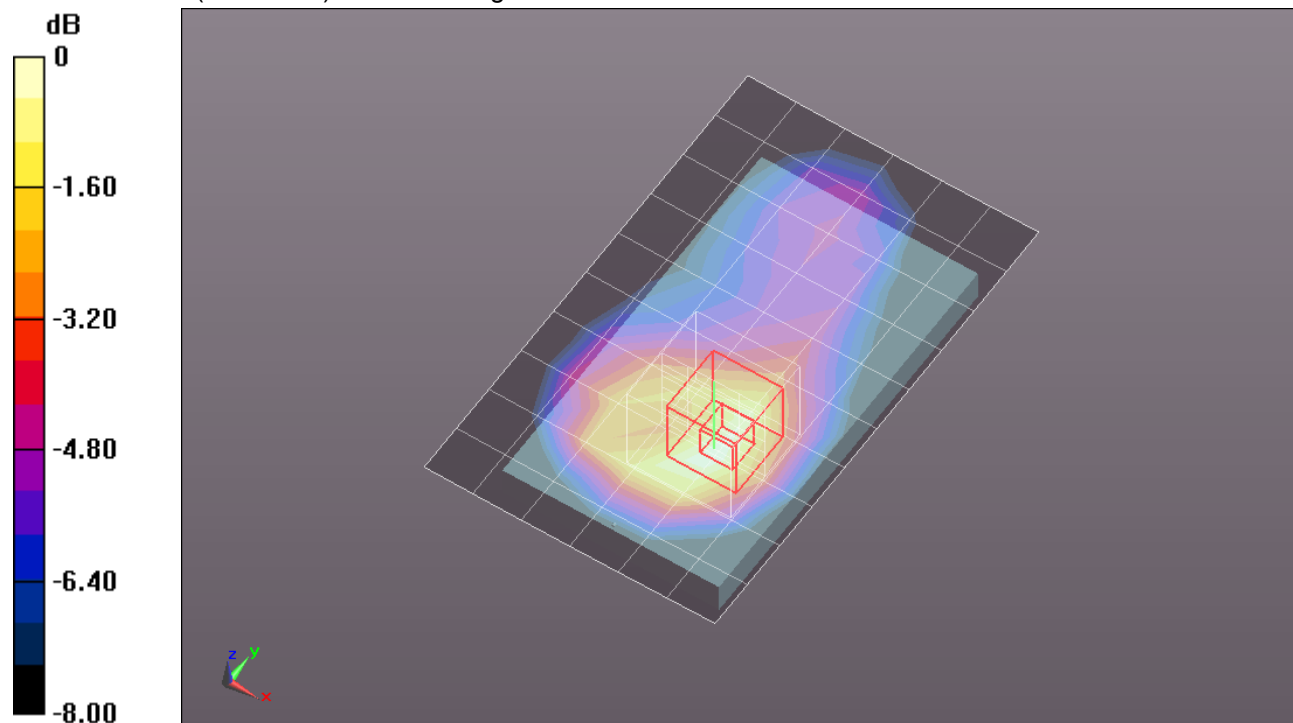
Body/Rear/GPRS 2 Slot/10mm/Ch 661/Zoom Scan (5x5x7)/Cube 0: Measurement grid: dx=8mm, dy=8mm, dz=5mm

Reference Value = 27.609 V/m; Power Drift = -0.04 dB

Peak SAR (extrapolated) = 1.4530

SAR(1 g) = 0.887 mW/g; SAR(10 g) = 0.514 mW/g

Maximum value of SAR (measured) = 1.108 mW/g



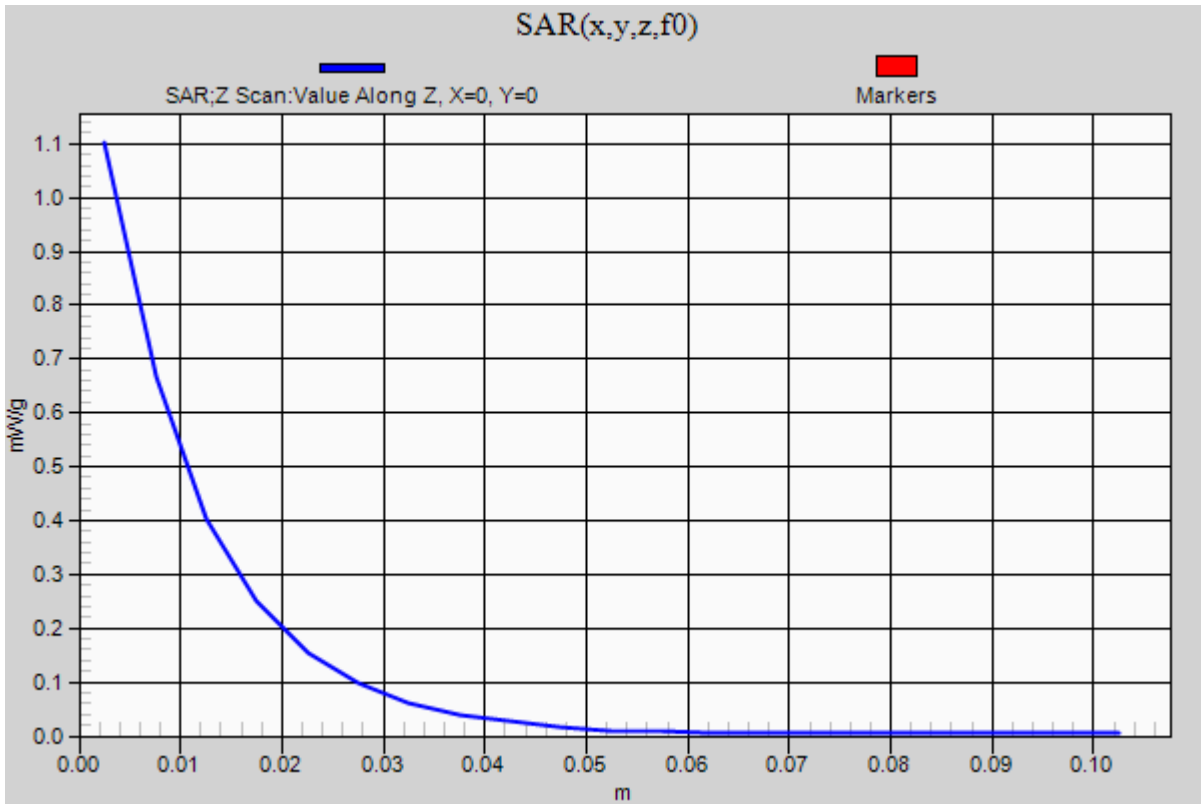
0 dB = 1.110mW/g = 0.91 dB mW/g

GSM1900

Frequency: 1880 MHz; Duty Cycle: 1:4.00037

Body/Rear/GPRS 2 Slot/10mm/Ch 661/Z Scan (1x1x21): Measurement grid: dx=20mm, dy=20mm, dz=5mm

Maximum value of SAR (measured) = 1.102 mW/g



GSM1900

Frequency: 1909.8 MHz; Duty Cycle: 1:4.00037; Room Ambient Temperature: 24.0°C; Liquid Temperature: 23.0°C
 Medium parameters used: $f = 1910$ MHz; $\sigma = 1.509$ mho/m; $\epsilon_r = 51.066$; $\rho = 1000$ kg/m³

DASY5 Configuration:

- Area Scan setting - Find Secondary Maximum Within: 2.0 dB and with a peak SAR value greater than 0.0012W/kg
- Electronics: DAE4 Sn1259; Calibrated: 2/13/2012
- Probe: EX3DV4 - SN3686; ConvF(7.04, 7.04, 7.04); Calibrated: 2/16/2012
- Sensor-Surface: 2.5mm (Mechanical Surface Detection)
- Phantom: ELI v5.0 (A); Type: QDOVA001BB; Serial: 1120

Body/Rear/GPRS 2 Slot/10mm/Ch 810/Area Scan (7x11x1): Measurement grid: dx=15mm, dy=15mm
 Maximum value of SAR (measured) = 1.054 mW/g

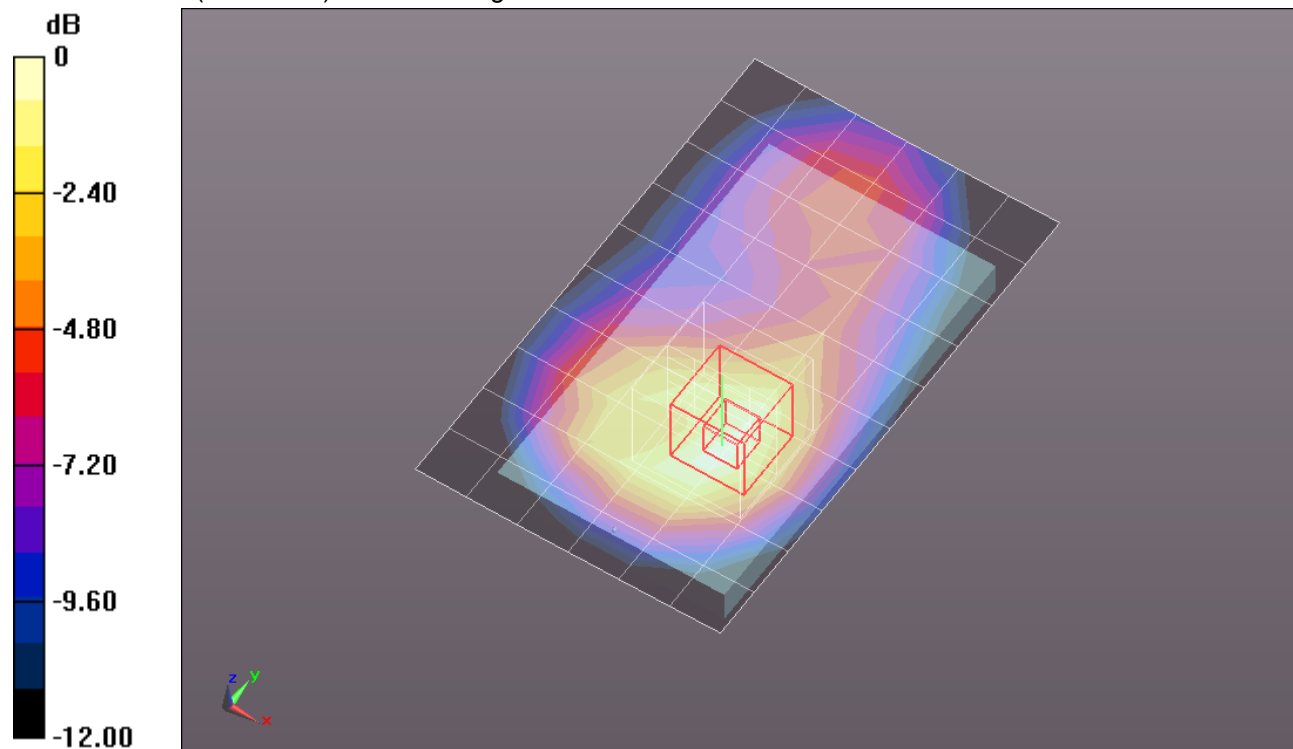
Body/Rear/GPRS 2 Slot/10mm/Ch 810/Zoom Scan (5x5x7)/Cube 0: Measurement grid: dx=8mm, dy=8mm, dz=5mm

Reference Value = 26.575 V/m; Power Drift = 0.0027 dB

Peak SAR (extrapolated) = 1.4160

SAR(1 g) = 0.847 mW/g; SAR(10 g) = 0.487 mW/g

Maximum value of SAR (measured) = 1.085 mW/g



0 dB = 1.090mW/g = 0.75 dB mW/g

GSM1900

Frequency: 1880 MHz; Duty Cycle: 1:4.00037; Room Ambient Temperature: 24.0°C; Liquid Temperature: 23.0°C
Medium parameters used: $f = 1880$ MHz; $\sigma = 1.479$ mho/m; $\epsilon_r = 51.173$; $\rho = 1000$ kg/m³
DASY5 Configuration:

- Area Scan setting - Find Secondary Maximum Within: 2.0 dB and with a peak SAR value greater than 0.0012W/kg
- Electronics: DAE4 Sn1259; Calibrated: 2/13/2012
- Probe: EX3DV4 - SN3686; ConvF(7.04, 7.04, 7.04); Calibrated: 2/16/2012
- Sensor-Surface: 2.5mm (Mechanical Surface Detection)
- Phantom: ELI v5.0 (A); Type: QDOVA001BB; Serial: 1120

Body/Front/GPRS 2 slot/10mm/Ch 661/Area Scan (7x11x1): Measurement grid: dx=15mm, dy=15mm
Maximum value of SAR (measured) = 0.569 mW/g

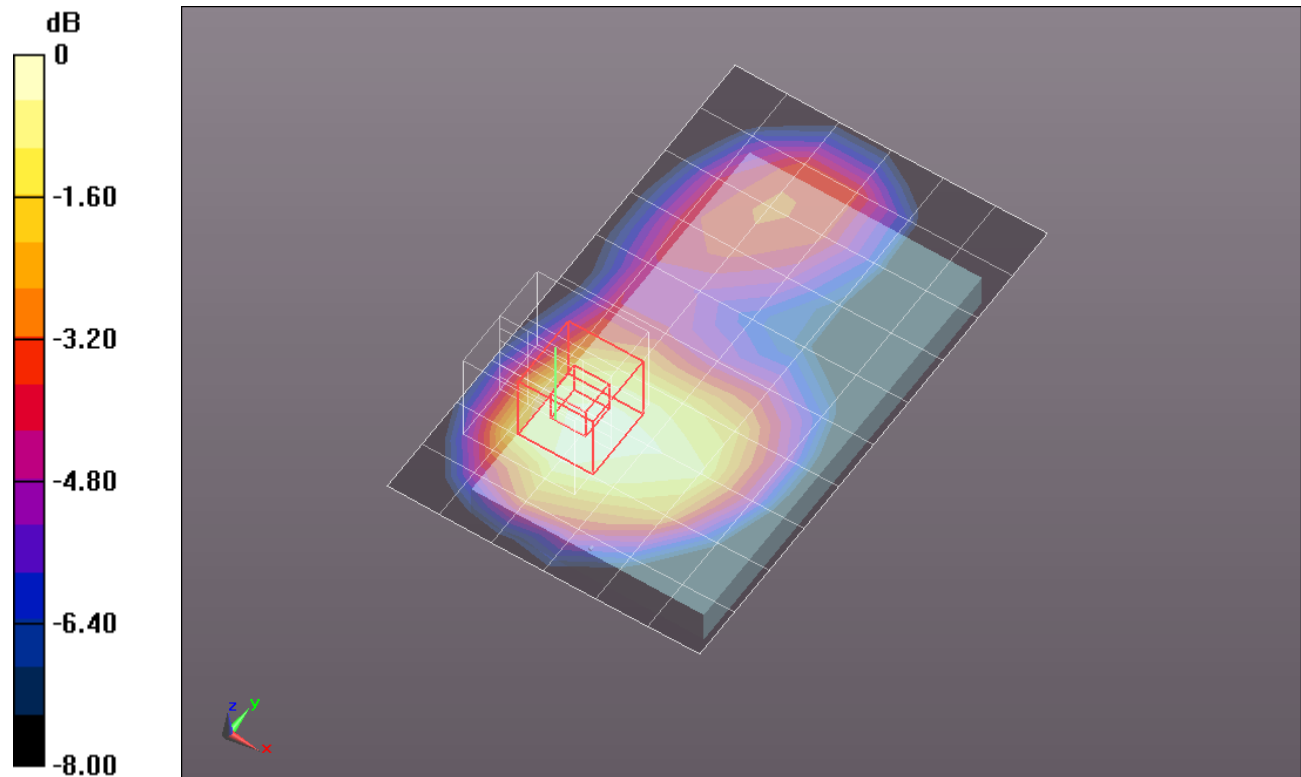
Body/Front/GPRS 2 slot/10mm/Ch 661/Zoom Scan (5x5x7)/Cube 0: Measurement grid: dx=8mm, dy=8mm, dz=5mm

Reference Value = 19.776 V/m; Power Drift = -0.03 dB

Peak SAR (extrapolated) = 0.7690

SAR(1 g) = 0.466 mW/g; SAR(10 g) = 0.285 mW/g

Maximum value of SAR (measured) = 0.580 mW/g



0 dB = 0.580mW/g = -4.73 dB mW/g

GSM1900

Frequency: 1880 MHz; Duty Cycle: 1:4.00037; Room Ambient Temperature: 24.0°C; Liquid Temperature: 23.0°C
Medium parameters used: $f = 1880$ MHz; $\sigma = 1.479$ mho/m; $\epsilon_r = 51.173$; $\rho = 1000$ kg/m³

DASY5 Configuration:

- Area Scan setting - Find Secondary Maximum Within: 2.0 dB and with a peak SAR value greater than 0.0012W/kg
- Electronics: DAE4 Sn1259; Calibrated: 2/13/2012
- Probe: EX3DV4 - SN3686; ConvF(7.04, 7.04, 7.04); Calibrated: 2/16/2012
- Sensor-Surface: 2.5mm (Mechanical Surface Detection)
- Phantom: ELI v5.0 (A); Type: QDOVA001BB; Serial: 1120

Body/Edge 2/GPRS 2 slot/10mm/Ch 661/Area Scan (7x12x1): Measurement grid: dx=15mm, dy=15mm

Maximum value of SAR (measured) = 0.111 mW/g

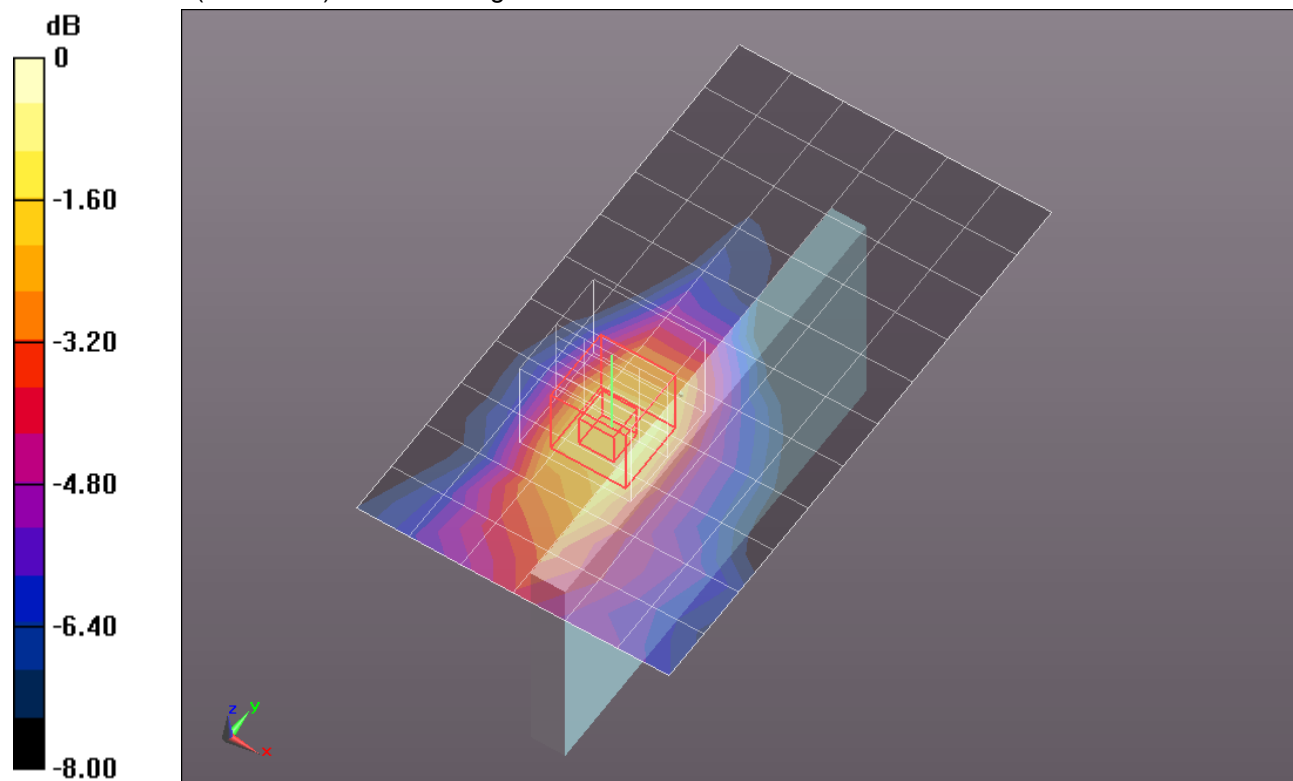
Body/Edge 2/GPRS 2 slot/10mm/Ch 661/Zoom Scan (5x5x7)/Cube 0: Measurement grid: dx=8mm, dy=8mm, dz=5mm

Reference Value = 8.768 V/m; Power Drift = 0.13 dB

Peak SAR (extrapolated) = 0.1750

SAR(1 g) = 0.109 mW/g; SAR(10 g) = 0.065 mW/g

Maximum value of SAR (measured) = 0.137 mW/g



0 dB = 0.140mW/g = -17.08 dB mW/g

GSM1900

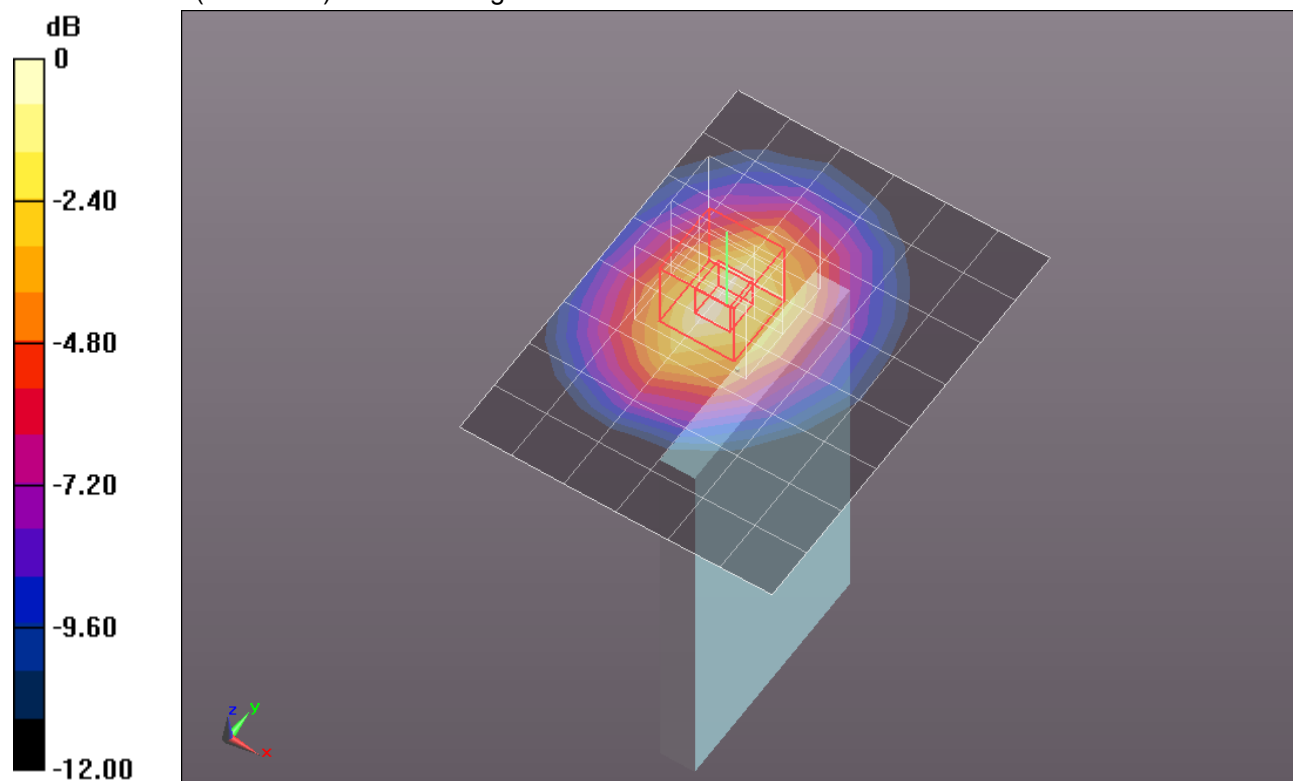
Frequency: 1880 MHz; Duty Cycle: 1:4.00037; Room Ambient Temperature: 24.0°C; Liquid Temperature: 23.0°C
Medium parameters used: $f = 1880$ MHz; $\sigma = 1.479$ mho/m; $\epsilon_r = 51.173$; $\rho = 1000$ kg/m³

DASY5 Configuration:

- Area Scan setting - Find Secondary Maximum Within: 2.0 dB and with a peak SAR value greater than 0.0012W/kg
- Electronics: DAE4 Sn1259; Calibrated: 2/13/2012
- Probe: EX3DV4 - SN3686; ConvF(7.04, 7.04, 7.04); Calibrated: 2/16/2012
- Sensor-Surface: 2.5mm (Mechanical Surface Detection)
- Phantom: ELI v5.0 (A); Type: QDOVA001BB; Serial: 1120

Body/Edge 3/GPRS 2 slot/10mm/Ch 661/Area Scan (7x9x1): Measurement grid: dx=15mm, dy=15mm
Maximum value of SAR (measured) = 0.728 mW/g

Body/Edge 3/GPRS 2 slot/10mm/Ch 661/Zoom Scan (5x5x7)/Cube 0: Measurement grid:
dx=8mm, dy=8mm, dz=5mm
Reference Value = 22.534 V/m; Power Drift = -0.11 dB
Peak SAR (extrapolated) = 0.9840
SAR(1 g) = 0.613 mW/g; SAR(10 g) = 0.356 mW/g
Maximum value of SAR (measured) = 0.778 mW/g



0 dB = 0.780mW/g = -2.16 dB mW/g

GSM1900

Frequency: 1880 MHz; Duty Cycle: 1:4.00037; Room Ambient Temperature: 24.0°C; Liquid Temperature: 23.0°C
Medium parameters used: $f = 1880$ MHz; $\sigma = 1.479$ mho/m; $\epsilon_r = 51.173$; $\rho = 1000$ kg/m³

DASY5 Configuration:

- Area Scan setting - Find Secondary Maximum Within: 2.0 dB and with a peak SAR value greater than 0.0012W/kg
- Electronics: DAE4 Sn1259; Calibrated: 2/13/2012
- Probe: EX3DV4 - SN3686; ConvF(7.04, 7.04, 7.04); Calibrated: 2/16/2012
- Sensor-Surface: 2.5mm (Mechanical Surface Detection)
- Phantom: ELI v5.0 (A); Type: QDOVA001BB; Serial: 1120

Body/Edge 4/GPRS 2 slot/10mm/Ch 661/Area Scan (7x12x1): Measurement grid: dx=15mm, dy=15mm

Maximum value of SAR (measured) = 0.302 mW/g

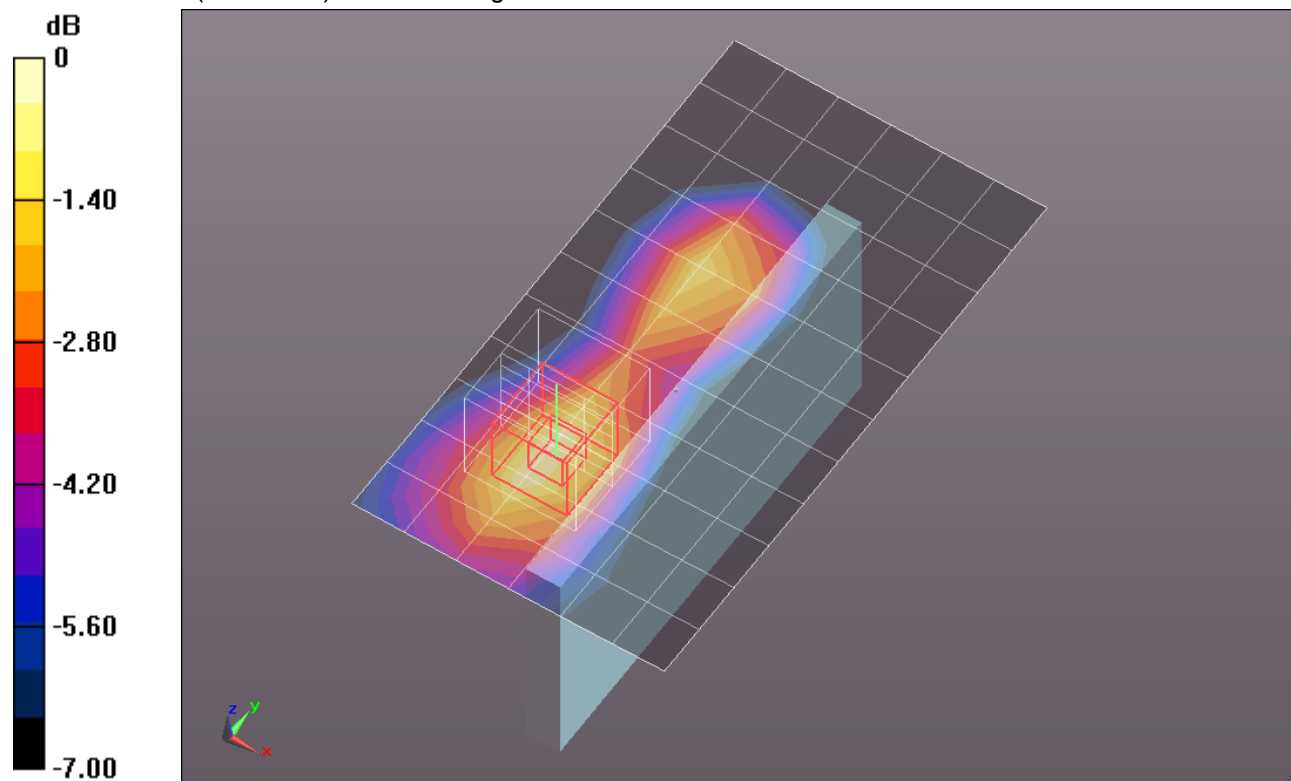
Body/Edge 4/GPRS 2 slot/10mm/Ch 661/Zoom Scan (5x5x7)/Cube 0: Measurement grid: dx=8mm, dy=8mm, dz=5mm

Reference Value = 14.465 V/m; Power Drift = -0.11 dB

Peak SAR (extrapolated) = 0.4250

SAR(1 g) = 0.259 mW/g; SAR(10 g) = 0.152 mW/g

Maximum value of SAR (measured) = 0.329 mW/g



0 dB = 0.330mW/g = -9.63 dB mW/g