

20130503_SystemPerformanceCheck-D835V2 SN 4d002

Frequency: 835 MHz; Duty Cycle: 1:1; Room Ambient Temperature: 24.0°C; Liquid Temperature: 23.0°C
Medium parameters used: $f = 835$ MHz; $\sigma = 0.93$ S/m; $\epsilon_r = 42.126$; $\rho = 1000$ kg/m³

DASY5 Configuration:

- Area Scan Setting: Find Secondary Maximum Within: 2.0 dB and with a peak SAR value greater than 0.0012W/kg
- Averaged Fast SAR: Polynomial fit
- Electronics: DAE4 Sn1357; Calibrated: 2/5/2013
- Probe: EX3DV4 - SN3901; ConvF(9.98, 9.98, 9.98); Calibrated: 2/13/2013;
- Sensor-Surface: 2.5mm (Mechanical Surface Detection)
- Phantom: SAM with CRP; Type: SAM;

Head/Pin=100 mW/Area Scan (61x61x1): Interpolated grid: dx=1.500 mm, dy=1.500 mm

Reference Value = 35.768 V/m; Power Drift = -0.01 dB

Fast SAR: SAR(1 g) = 0.998 W/kg; SAR(10 g) = 0.671 W/kg

Maximum value of SAR (interpolated) = 1.18 W/kg

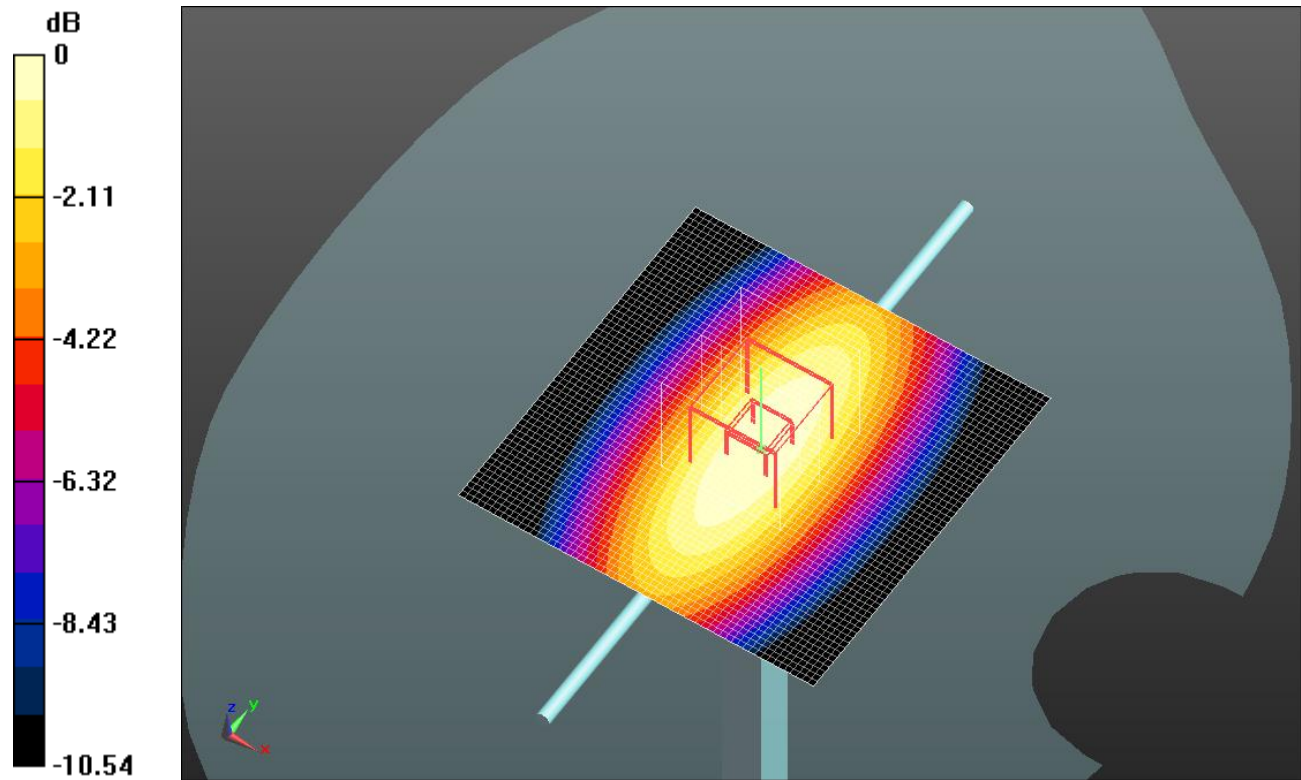
Head/Pin=100 mW/Zoom Scan (7x7x7)/Cube 0: Measurement grid: dx=5mm, dy=5mm, dz=5mm

Reference Value = 35.768 V/m; Power Drift = -0.01 dB

Peak SAR (extrapolated) = 1.48 W/kg

SAR(1 g) = 0.965 W/kg; SAR(10 g) = 0.630 W/kg

Maximum value of SAR (measured) = 1.18 W/kg

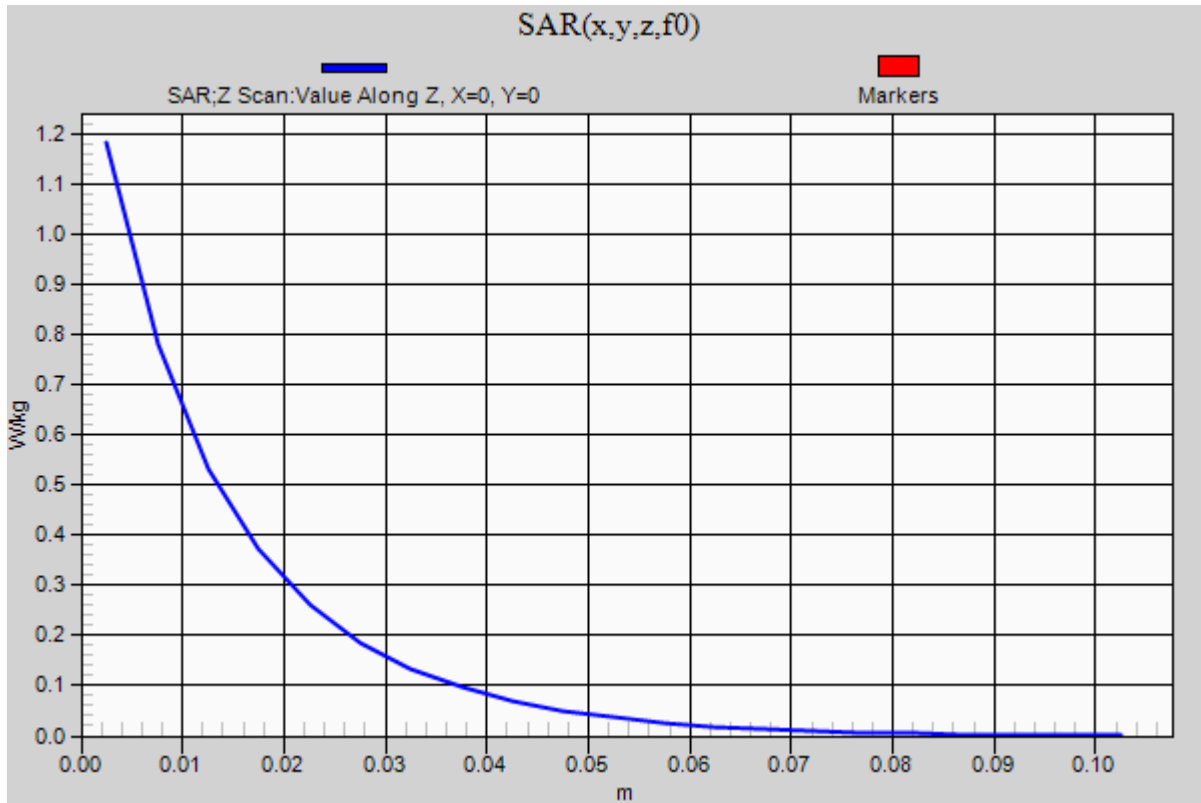


0 dB = 1.18 W/kg = 0.72 dBW/kg

20130503_SystemPerformanceCheck-D835V2 SN 4d002

Frequency: 835 MHz; Duty Cycle: 1:1

Head/Pin=100 mW/Z Scan (1x1x21): Measurement grid: dx=20mm, dy=20mm, dz=5mm
Maximum value of SAR (measured) = 1.18 W/kg



20130506_SystemPerformanceCheck-D835V2 SN 4d002

Frequency: 835 MHz; Duty Cycle: 1:1; Room Ambient Temperature: 24.0°C; Liquid Temperature: 23.0°C

Medium parameters used: $f = 835$ MHz; $\sigma = 1.009$ S/m; $\epsilon_r = 52.879$; $\rho = 1000$ kg/m³

DASY5 Configuration:

- Area Scan Setting: Find Secondary Maximum Within: 2.0 dB and with a peak SAR value greater than 0.0012W/kg
- Averaged Fast SAR: Polynomial fit
- Electronics: DAE4 Sn1357; Calibrated: 2/5/2013
- Probe: EX3DV4 - SN3901; ConvF(9.82, 9.82, 9.82); Calibrated: 2/13/2013;
- Sensor-Surface: 2.5mm (Mechanical Surface Detection)
- Phantom: ELI v5.0 B; Type: QDOVA002AA; Serial: 1180

Body/Pin=100 mW/Area Scan (61x61x1): Interpolated grid: dx=1.500 mm, dy=1.500 mm

Reference Value = 34.748 V/m; Power Drift = -0.00 dB

Fast SAR: SAR(1 g) = 1.01 W/kg; SAR(10 g) = 0.677 W/kg

Maximum value of SAR (interpolated) = 1.20 W/kg

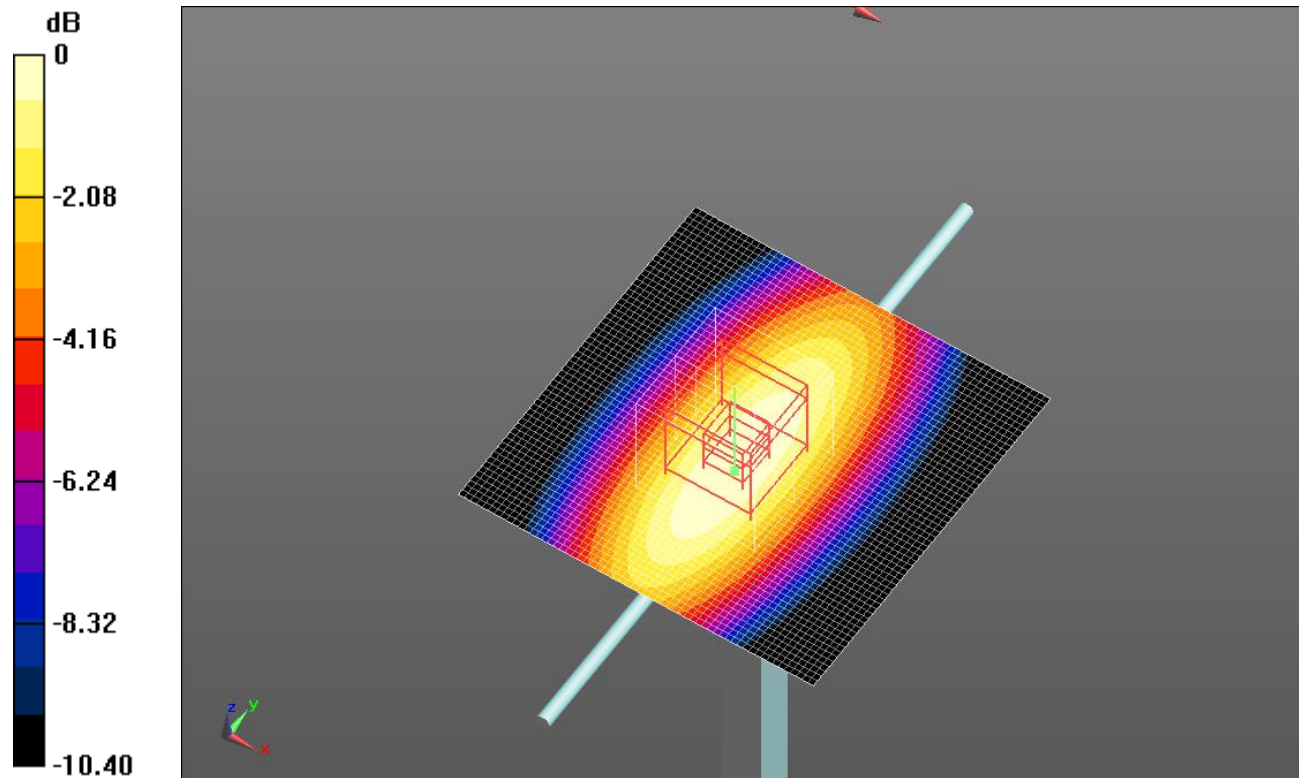
Body/Pin=100 mW/Zoom Scan (7x7x7)/Cube 0: Measurement grid: dx=5mm, dy=5mm, dz=5mm

Reference Value = 34.748 V/m; Power Drift = -0.00 dB

Peak SAR (extrapolated) = 1.47 W/kg

SAR(1 g) = 0.992 W/kg; SAR(10 g) = 0.653 W/kg

Maximum value of SAR (measured) = 1.20 W/kg

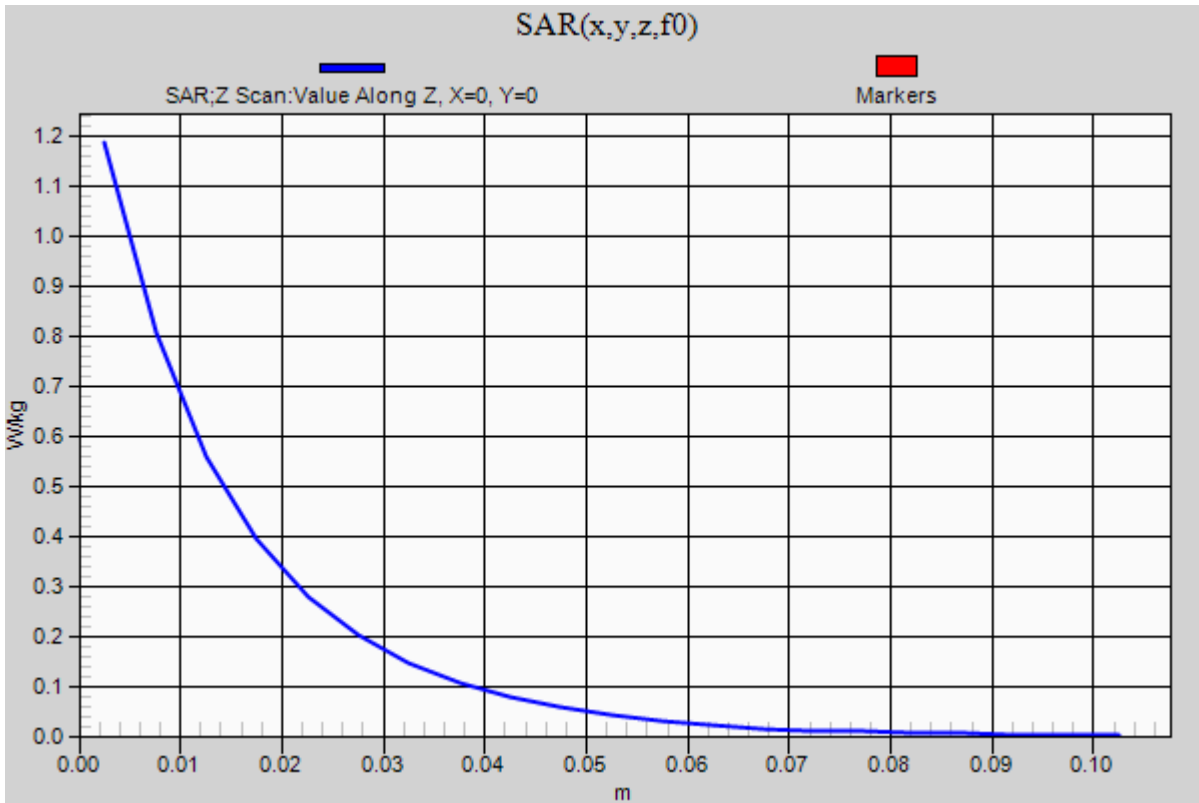


0 dB = 1.20 W/kg = 0.79 dBW/kg

20130506_SystemPerformanceCheck-D835V2 SN 4d002

Frequency: 835 MHz; Duty Cycle: 1:1

Body/Pin=100 mW/Z Scan (1x1x21): Measurement grid: dx=20mm, dy=20mm, dz=5mm
Maximum value of SAR (measured) = 1.19 W/kg



20130506_SystemPerformanceCheck-D1900V2 SN 5d043

Frequency: 1900 MHz; Duty Cycle: 1:1; Room Ambient Temperature: 24.0°C; Liquid Temperature: 23.0°C

Medium parameters used: $f = 1900$ MHz; $\sigma = 1.423$ S/m; $\epsilon_r = 38.553$; $\rho = 1000$ kg/m³

DASY5 Configuration:

- Area Scan Setting: Find Secondary Maximum Within: 2.0 dB and with a peak SAR value greater than 0.0012W/kg
- Averaged Fast SAR: Polynomial fit
- Electronics: DAE4 Sn1357; Calibrated: 2/5/2013
- Probe: EX3DV4 - SN3901; ConvF(8.03, 8.03, 8.03); Calibrated: 2/13/2013;
- Sensor-Surface: 2.5mm (Mechanical Surface Detection)
- Phantom: SAM with CRP; Type: SAM;

Head/Pin=100 mW/Area Scan (61x61x1): Interpolated grid: dx=1.500 mm, dy=1.500 mm

Reference Value = 62.945 V/m; Power Drift = 0.00 dB

Fast SAR: SAR(1 g) = 4.23 W/kg; SAR(10 g) = 2.17 W/kg

Maximum value of SAR (interpolated) = 5.58 W/kg

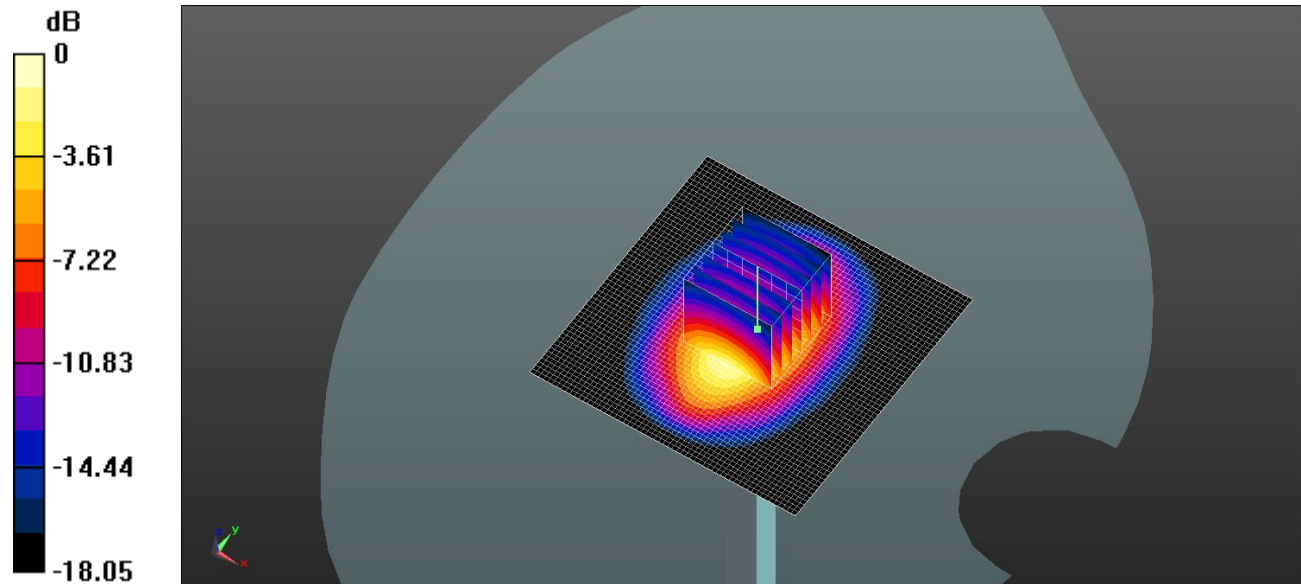
Head/Pin=100 mW/Zoom Scan (7x7x7)/Cube 0: Measurement grid: dx=5mm, dy=5mm, dz=5mm

Reference Value = 62.945 V/m; Power Drift = 0.00 dB

Peak SAR (extrapolated) = 7.66 W/kg

SAR(1 g) = 4.12 W/kg; SAR(10 g) = 2.14 W/kg

Maximum value of SAR (measured) = 5.57 W/kg

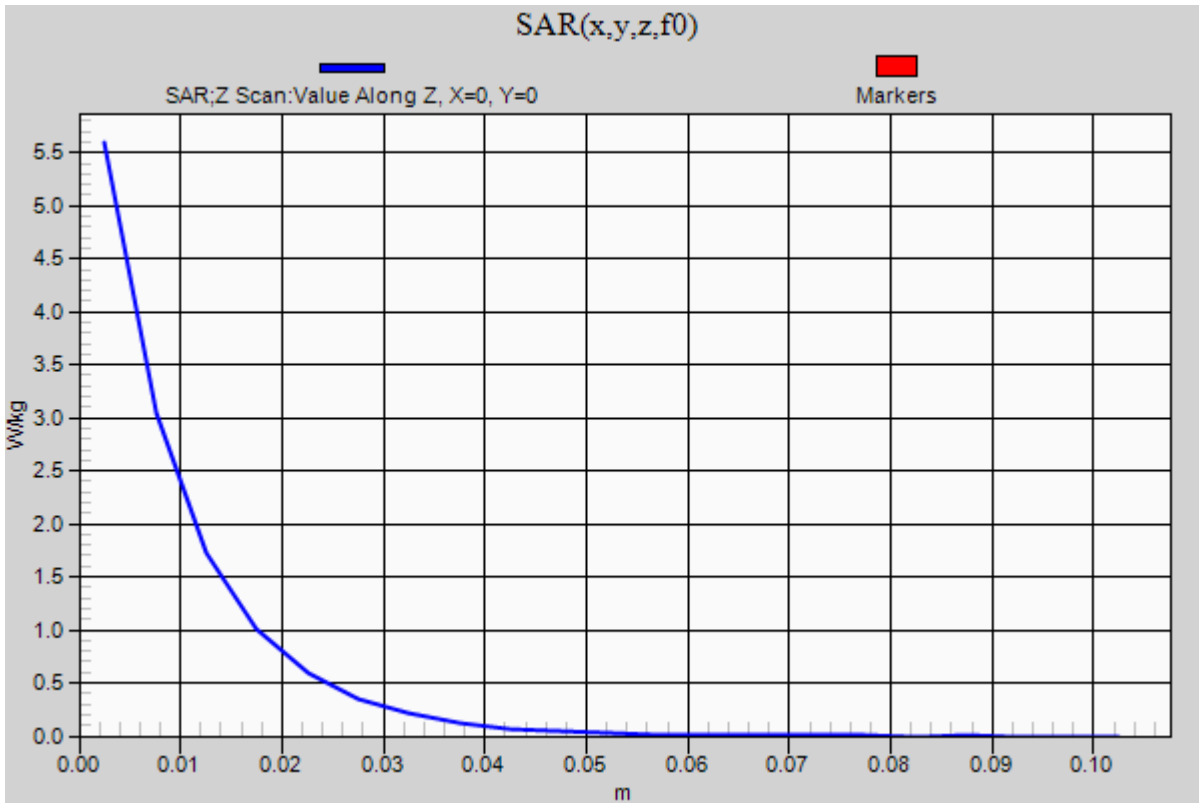


0 dB = 5.57 W/kg = 7.46 dBW/kg

20130506_SystemPerformanceCheck-D1900V2 SN 5d043

Frequency: 1900 MHz; Duty Cycle: 1:1

Head/Pin=100 mW/Z Scan (1x1x21): Measurement grid: dx=20mm, dy=20mm, dz=5mm
Maximum value of SAR (measured) = 5.59 W/kg



20130507_SystemPerformanceCheck-D2450V2 SN 899

Frequency: 2450 MHz; Duty Cycle: 1:1; Room Ambient Temperature: 24.0°C; Liquid Temperature: 23.0°C

Medium parameters used: $f = 2450$ MHz; $\sigma = 1.89$ S/m; $\epsilon_r = 52.616$; $\rho = 1000$ kg/m³

DASY5 Configuration:

- Area Scan Setting: Find Secondary Maximum Within: 2.0 dB and with a peak SAR value greater than 0.0012W/kg
- Averaged Fast SAR: Polynomial fit
- Electronics: DAE4 Sn1352; Calibrated: 10/8/2012
- Probe: EX3DV4 - SN3885; ConvF(6.8, 6.8, 6.8); Calibrated: 10/9/2012;
- Sensor-Surface: 2.5mm (Mechanical Surface Detection)
- Phantom: ELI v5.0 (B); Type: QDOVA001BB; Serial: 1185

Body/Pin=100 mW/Area Scan (71x71x1): Interpolated grid: dx=1.200 mm, dy=1.200 mm

Reference Value = 62.684 V/m; Power Drift = 0.06 dB

Fast SAR: SAR(1 g) = 5.34 W/kg; SAR(10 g) = 2.3 W/kg

Maximum value of SAR (interpolated) = 7.87 W/kg

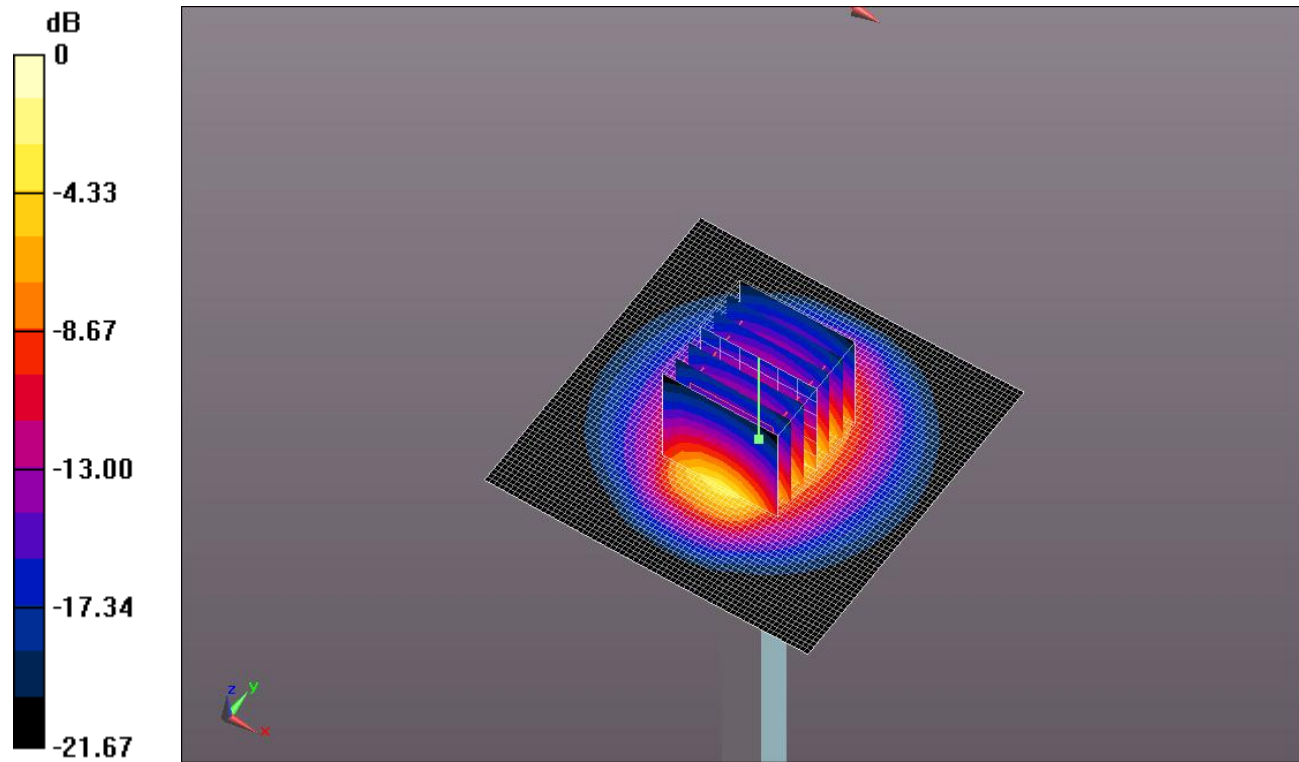
Body/Pin=100 mW/Zoom Scan (7x7x7)/Cube 0: Measurement grid: dx=5mm, dy=5mm, dz=5mm

Reference Value = 62.684 V/m; Power Drift = 0.06 dB

Peak SAR (extrapolated) = 11.3 W/kg

SAR(1 g) = 5.36 W/kg; SAR(10 g) = 2.47 W/kg

Maximum value of SAR (measured) = 7.65 W/kg



0 dB = 7.65 W/kg = 8.84 dBW/kg

20130507_SystemPerformanceCheck-D2450V2 SN 899

Frequency: 2450 MHz; Duty Cycle: 1:1

Body/Pin=100 mW/Z Scan (1x1x21): Measurement grid: dx=20mm, dy=20mm, dz=5mm
Maximum value of SAR (measured) = 7.56 W/kg

