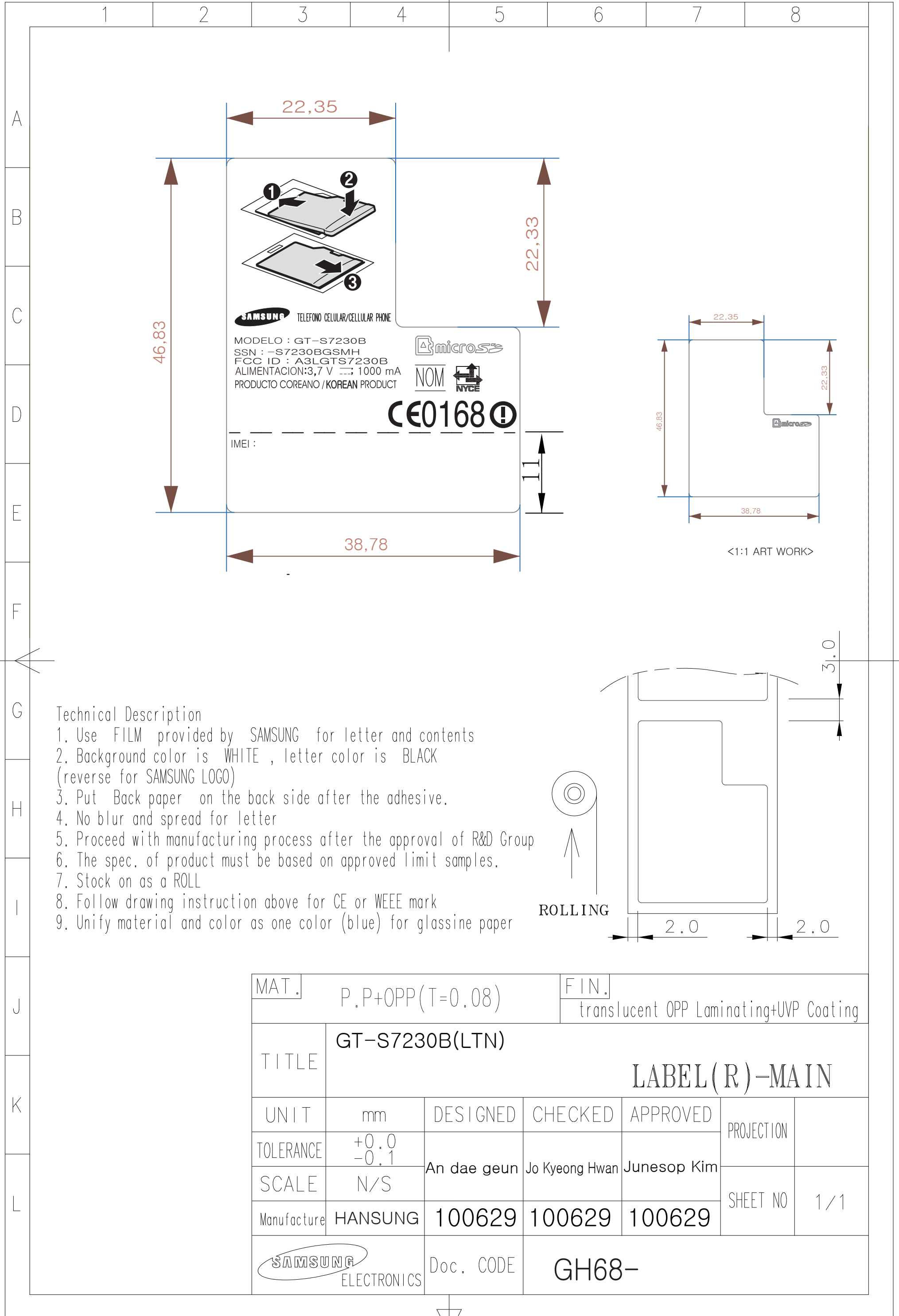


This drawing is property of SEC. Use or copy of this drawing without proper permission from the appropriate technical-document managing department is prohibited.



Technical Description

1. Use FILM provided by SAMSUNG for letter and contents
2. Background color is WHITE , letter color is BLACK (reverse for SAMSUNG LOGO)
3. Put Back paper on the back side after the adhesive.
4. No blur and spread for letter
5. Proceed with manufacturing process after the approval of R&D Group
6. The spec. of product must be based on approved limit samples.
7. Stock on as a ROLL
8. Follow drawing instruction above for CE or WEEE mark
9. Unify material and color as one color (blue) for glassine paper

| | | | | | | | | |
|---------------------|--------------|----------------------------------|----------------|-------------|------------|--|--|--|
| MAT. | | P.P+OPP(T=0.08) | | | FIN. | | translucent OPP Laminating+UVP Coating | |
| TITLE | | GT-S7230B(LTN) LABEL (R)-MAIN | | | | | | |
| UNIT | mm | DESIGNED | CHECKED | APPROVED | PROJECTION | | | |
| TOLERANCE | +0.0 -0.1 | An dae geun | Jo Kyeong Hwan | Junesop Kim | | | | |
| SCALE | N/S | | | | SHEET NO | | 1/1 | |
| Manufacture | HANSUNG | 100629 | 100629 | 100629 | | | | |
| SAMSUNG ELECTRONICS | | Doc. CODE | GH68- | | | | | |

3. Label Location.



The label is placed inside the battery compartment.

The FCC ID Label shown will be readily visible at the time of purchase.