

## APPENDIX 2 : System Validation

### 1. System validation result

#### System validation result for 900MHz

##### Simulated Tissue Liquid Parameter confirmation

DIELECTRIC PARAMETERS MEASUREMENT RESULTS										
Date	Ambient Temp. [deg.c]	Relative Humidity [%]	Liquid type	Liquid Temp. [deg.c]	Measured Frequency [MHz]	Parameters	Target Value*1	Measured	Deviation [%]	Limit [%]
22-Apr	24.0	40	HSL 900	23.5	900	$\epsilon_r$	41.5	42.4	2.2	+/-5
						$\sigma$ [mho/m]	0.97	0.99	2.1	+/-5

$\epsilon_r$ : Relative Permittivity /  $\sigma$  : Conductivity

\*1 The Target value is a parameter defined in FCC OET 65.

#### System validation result (for IEEE1528)

SYSTEM VALIDATION							
Date	Frequency [MHz]	SAR 1g [W/kg]			Target 1W *2	Deviation [%]	Limit [%]
		Forward Power 250mW		Conversion 1W			
		Measured		Calculation			
22-Apr	900.00	2.77		11.08	10.80	2.6	+/-10

\*2 The target value is the parameter defined in IEEE 1528.

**UL Japan, Inc.**

**Head Office EMC Lab.**

4383-326 Asama-cho, Ise-shi, Mie-ken 516-0021 JAPAN

Telephone: +81 596 24 8999

Facsimile: +81 596 24 8124

**HEAD 900MHz System Validation DATA / Dipole 900MHz / Forward Conducted Power : 250mW**

Communication System: CW; Communication System Band: D900 (900.0 MHz); Frequency: 900 MHz; Duty Cycle: 1:1  
Medium parameters used:  $f = 900$  MHz;  $\sigma = 0.986$  mho/m;  $\epsilon_r = 42.431$ ;  $\rho = 1000$  kg/m<sup>3</sup>

Phantom section: Flat Section

Measurement Standard: DASYS (IEEE/IEC/ANSI C63.19-2007)

DASY5 Configuration

Probe: EX3DV4 - SN3825; ConvF(9.36, 9.36, 9.36); Calibrated: 2012/12/10;

Sensor-Surface: 2mm (Mechanical Surface Detection)

Electronics: DAE4 Sn509; Calibrated: 2012/07/13

Phantom: SAM with CRP; Type: SAM;

Measurement SW: DASYS2, Version 52.8 (3);

**Area Scan (61x61x1):** Interpolated grid: dx=1.500 mm, dy=1.500 mm

Maximum value of SAR (interpolated) = 3.60 W/kg

**Zoom Scan (7x7x7)/Cube 0:** Measurement grid: dx=5mm, dy=5mm, dz=5mm

Reference Value = 61.230 V/m; Power Drift = 0.06 dB

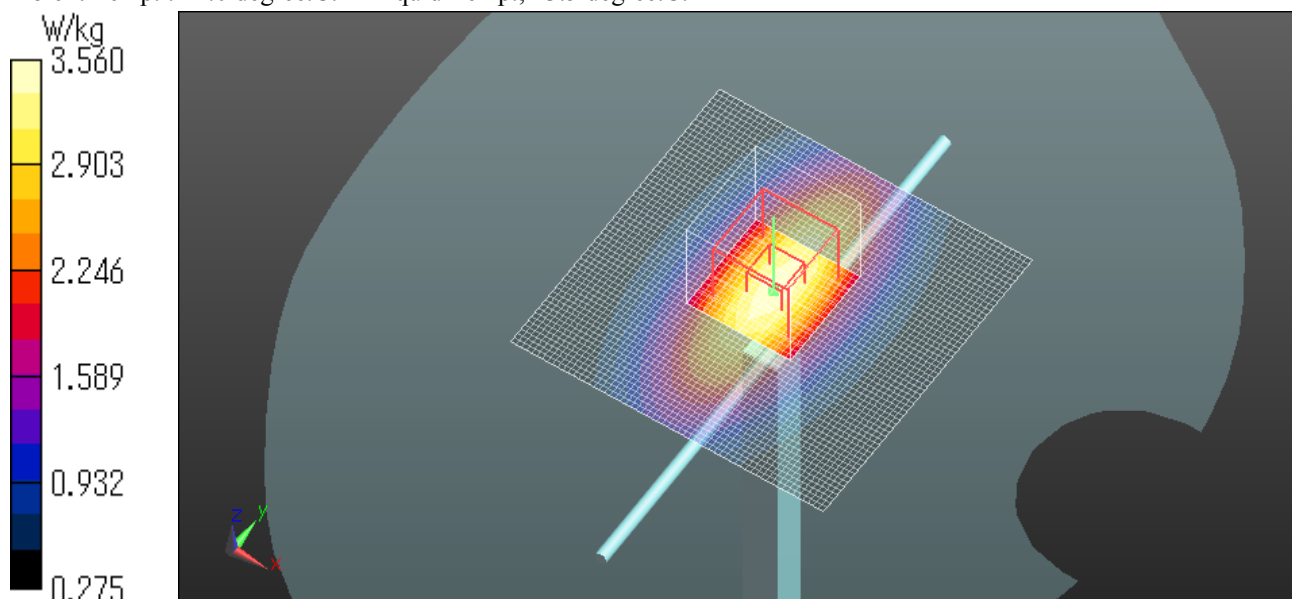
Peak SAR (extrapolated) = 4.25 W/kg

**SAR(1 g) = 2.77 W/kg; SAR(10 g) = 1.78 W/kg**

Maximum value of SAR (measured) = 3.56 W/kg

Date: 2013/04/22

Ambient Temp. : 24.0 degree.C. Liquid Temp.; 23.5 degree.C.



**UL Japan, Inc.**

**Head Office EMC Lab.**

4383-326 Asama-cho, Ise-shi, Mie-ken 516-0021 JAPAN

Telephone: +81 596 24 8999

Facsimile: +81 596 24 8124

**System validation result for Body 900MHz**  
**Simulated Tissue Liquid Parameter confirmation**

DIELECTRIC PARAMETERS MEASUREMENT RESULTS										
Date	Ambient Temp. [deg.c]	Relative Humidity [%]	Liquid type	Liquid Temp. [deg.c]	Measured Frequency [MHz]	Parameters	Target Value*1	Measured	Deviation [%]	Limit [%]
22-Apr	24.0	40	MSL 900	23.5	900	$\epsilon_r$	55.0	53.3	-3.1	+/-5
						$\sigma$ [mho/m]	1.05	1.04	-1.0	+/-5

$\epsilon_r$ : Relative Permittivity /  $\sigma$  : Conductivity

\*1 The Target value is a parameter defined in FCC OET 65 .

DIELECTRIC PARAMETERS MEASUREMENT RESULTS										
Date	Ambient Temp. [deg.c]	Relative Humidity [%]	Liquid type	Liquid Temp. [deg.c]	Measured Frequency [MHz]	Parameters	Target Value*2	Measured	Deviation [%]	Limit*3 [%]
22-Apr	24.0	40	MSL 900	23.5	900	$\epsilon_r$	53.6	53.3	-0.6	+/-6
						$\sigma$ [mho/m]	1.05	1.04	-1.0	+/-6

$\epsilon_r$ : Relative Permittivity /  $\sigma$  : Conductivity

\*2 The target value is the calibrated dipole Body TSL parameters. (D900V2 SN:155, Measured Body TSL parameters)

\*3 The limit is for deviation provided by manufacture.

**System validation result (for calibration by manufacture)**

SYSTEM VALIDATION								
Date	Frequency [MHz]	SAR 1g [W/kg]				Deviation [%]	Limit [%]	
		Forward Power 250mW		Conversion 1W				Target 1W *1
		Measured		Calculation				
22-Apr	900.00	2.73		10.92		11.00	-0.7	+/-10

\*1 The target value is the parameter defined in 1g SAR (normalizes to 1W) in manufacturer calibrated dipole (D900V2 SN:155)

**UL Japan, Inc.**

**Head Office EMC Lab.**

4383-326 Asama-cho, Ise-shi, Mie-ken 516-0021 JAPAN

Telephone: +81 596 24 8999

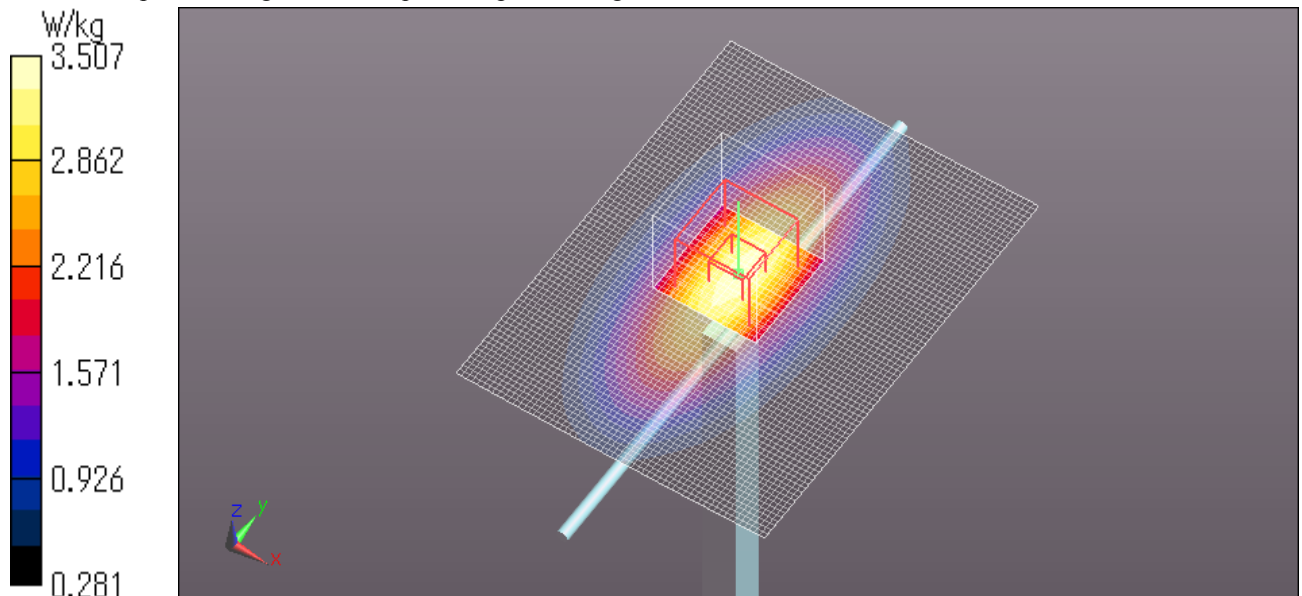
Facsimile: +81 596 24 8124

**BODY 900MHz System Validation DATA / Dipole 900MHz / Forward Conducted Power : 250mW**

Communication System: CW; Communication System Band: D900 (900.0 MHz); Frequency: 900 MHz; Duty Cycle: 1:1  
Medium parameters used:  $f = 900$  MHz;  $\sigma = 1.036$  mho/m;  $\epsilon_r = 53.247$ ;  $\rho = 1000$  kg/m<sup>3</sup>  
Phantom section: Flat Section  
Measurement Standard: DASYS (IEEE/IEC/ANSI C63.19-2007)  
DASY5 Configuration  
Probe: EX3DV4 - SN3825; ConvF(9.38, 9.38, 9.38); Calibrated: 2012/12/10;  
Sensor-Surface: 2mm (Mechanical Surface Detection)  
Electronics: DAE4 Sn509; Calibrated: 2012/07/13  
Phantom: ELI 4.0; Type: QDOVA001BA;  
Measurement SW: DASYS2, Version 52.8 (3);

**Area Scan (61x81x1):** Interpolated grid:  $dx=1.500$  mm,  $dy=1.500$  mm  
Maximum value of SAR (interpolated) = 3.48 W/kg

**Zoom Scan (7x7x7) (7x7x7)/Cube 0:** Measurement grid:  $dx=5$ mm,  $dy=5$ mm,  $dz=5$ mm  
Reference Value = 59.025 V/m; Power Drift = -0.04 dB  
Peak SAR (extrapolated) = 4.21 W/kg  
**SAR(1 g) = 2.73 W/kg; SAR(10 g) = 1.75 W/kg**  
Maximum value of SAR (measured) = 3.51 W/kg  
Date: 2013/04/22  
Ambient Temp. : 24.0 degree.C. Liquid Temp.; 23.5 degree.C.



**System validation result for 1800MHz**  
**Simulated Tissue Liquid Parameter confirmation**

DIELECTRIC PARAMETERS MEASUREMENT RESULTS										
Date	Ambient Temp. [deg.c]	Relative Humidity [%]	Liquid type	Liquid Temp. [deg.c]	Measured Frequency [MHz]	Parameters	Target Value*1	Measured	Deviation [%]	Limit [%]
22-Apr	24.5	43	HSL 1800	24.0	1800	$\epsilon_r$	40.0	38.5	-3.7	+/-5
						$\sigma$ [mho/m]	1.40	1.38	-1.6	+/-5

$\epsilon_r$ : Relative Permittivity /  $\sigma$ : Conductivity

\*1 The Target value is a parameter defined in FCC OET 65.

**System validation result (for IEEE1528)**

SYSTEM VALIDATION							
Date	Frequency [MHz]	SAR 1g [W/kg]			Target 1W *2	Deviation [%]	Limit [%]
		Forward Power 250mW		Conversion 1W			
		Measured		Calculation			
22-Apr	1800.00	9.47		37.88	38.10	-0.6	+/-10

\*2 The target value is the parameter defined in IEEE 1528.

**UL Japan, Inc.**

**Head Office EMC Lab.**

4383-326 Asama-cho, Ise-shi, Mie-ken 516-0021 JAPAN

Telephone: +81 596 24 8999

Facsimile: +81 596 24 8124

**HEAD 1800MHz System Validation DATA / Dipole 1800MHz / Forward Conducted Power : 250mW**

Communication System: CW; Communication System Band: D1800 (1800.0 MHz); Frequency: 1800 MHz; Duty Cycle: 1:1

Medium parameters used:  $f = 1800$  MHz;  $\sigma = 1.378$  mho/m;  $\epsilon_r = 38.501$ ;  $\rho = 1000$  kg/m<sup>3</sup>

Phantom section: Flat Section

Measurement Standard: DASYS (IEEE/IEC/ANSI C63.19-2007)

DASY5 Configuration

Probe: EX3DV4 - SN3825; ConvF(7.94, 7.94, 7.94); Calibrated: 2012/12/10;

Sensor-Surface: 2mm (Mechanical Surface Detection)

Electronics: DAE4 Sn509; Calibrated: 2012/07/13

Phantom: SAM with CRP; Type: SAM;

Measurement SW: DASYS2, Version 52.8 (3);

**Area Scan (61x61x1):** Interpolated grid:  $dx=1.500$  mm,  $dy=1.500$  mm

Maximum value of SAR (interpolated) = 13.8 W/kg

**Zoom Scan (7x7x7)/Cube 0:** Measurement grid:  $dx=5$ mm,  $dy=5$ mm,  $dz=5$ mm

Reference Value = 97.910 V/m; Power Drift = -0.06 dB

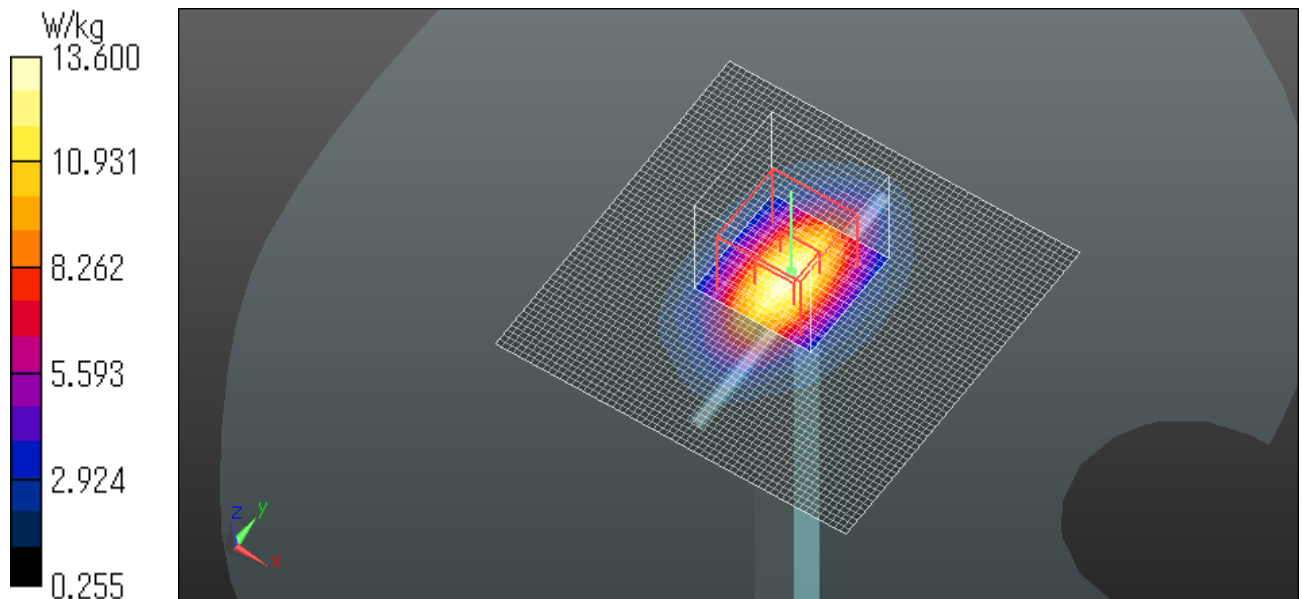
Peak SAR (extrapolated) = 17.4 W/kg

**SAR(1 g) = 9.47 W/kg; SAR(10 g) = 4.97 W/kg**

Maximum value of SAR (measured) = 13.6 W/kg

Date: 2013/04/22

Ambient Temp. : 24.5 degree.C. Liquid Temp.; 24.0 degree.C.



**UL Japan, Inc.**

**Head Office EMC Lab.**

4383-326 Asama-cho, Ise-shi, Mie-ken 516-0021 JAPAN

Telephone: +81 596 24 8999

Facsimile: +81 596 24 8124

**System validation result for Body1800MHz**  
**Simulated Tissue Liquid Parameter confirmation**

DIELECTRIC PARAMETERS MEASUREMENT RESULTS										
Date	Ambient Temp. [deg.c]	Relative Humidity [%]	Liquid type	Liquid Temp. [deg.c]	Measured Frequency [MHz]	Parameters	Target Value*1	Measured	Deviation [%]	Limit [%]
15-May	24.0	41	MSL 1800	23.5	1800	$\epsilon_r$	53.3	51.4	-3.6	+/-5
						$\sigma$ [mho/m]	1.52	1.49	-2.3	+/-5

$\epsilon_r$ : Relative Permittivity /  $\sigma$ : Conductivity

\*1 The Target value is a parameter defined in FCC OET 65 .

**Simulated Tissue Liquid Parameter confirmation (for calibration by manufacture)**

DIELECTRIC PARAMETERS MEASUREMENT RESULTS										
Date	Ambient Temp. [deg.c]	Relative Humidity [%]	Liquid type	Liquid Temp. [deg.c]	Measured Frequency [MHz]	Parameters	Target Value*2	Measured	Deviation [%]	Limit*3 [%]
15-May	24.0	41	MSL 1800	23.5	1800	$\epsilon_r$	52.9	51.4	-2.9	+/-6
						$\sigma$ [mho/m]	1.45	1.49	2.4	+/-6

$\epsilon_r$ : Relative Permittivity /  $\sigma$ : Conductivity

\*2 The target value is the calibrated dipole Body TSL parameters.

(D1800V2 SN:2d04, Measured Body TSL parameters)

\*3 The limit is for deviation provided by manufacture.

**System validation result (for calibration by manufacture)**

SYSTEM VALIDATION							
Date	Frequency [MHz]	SAR 1g [W/kg]			Target 1W *4	Deviation	Limit
		Forward Power 250mW Measured	Conversion 1W Calculation				
15-May	1800.00	10.10	40.40		37.40	8.0	+/-10

\*4The target value is the parameter defined in 1g SAR (normalizes to 1W) in manufacturer calibrated dipole (D1800V2 SN:2d04)

**UL Japan, Inc.**

**Head Office EMC Lab.**

4383-326 Asama-cho, Ise-shi, Mie-ken 516-0021 JAPAN

Telephone: +81 596 24 8999

Facsimile: +81 596 24 8124

**Body 1800MHz System Validation DATA / Dipole1800MHz / Forward Conducted Power : 250mW**

Communication System: CW; Communication System Band: D1800 (1800.0 MHz); Frequency: 1800 MHz; Duty Cycle: 1:1

Medium parameters used:  $f = 1800$  MHz;  $\sigma = 1.485$  mho/m;  $\epsilon_r = 51.361$ ;  $\rho = 1000$  kg/m<sup>3</sup>

Phantom section: Flat Section

Measurement Standard: DASYS (IEEE/IEC/ANSI C63.19-2007)

DASY5 Configuration

Probe: EX3DV4 - SN3825; ConvF(7.77, 7.77, 7.77); Calibrated: 2012/12/10; \${Probe: Calibration Date}

Sensor-Surface: 2mm (Mechanical Surface Detection)

Electronics: DAE4 Sn509; Calibrated: 2012/07/13

Phantom: ELI 4.0; Type: QDOVA001BA; Serial: xxxx

Measurement SW: DASYS2, Version 52.8 (3);

**Area Scan (51x101x1):** Interpolated grid: dx=1.500 mm, dy=1.500 mm

Maximum value of SAR (interpolated) = 14.7 W/kg

**Zoom Scan (7x7x7) (7x7x7)/Cube 0:** Measurement grid: dx=5mm, dy=5mm, dz=5mm

Reference Value = 100.4 V/m; Power Drift = -0.01 dB

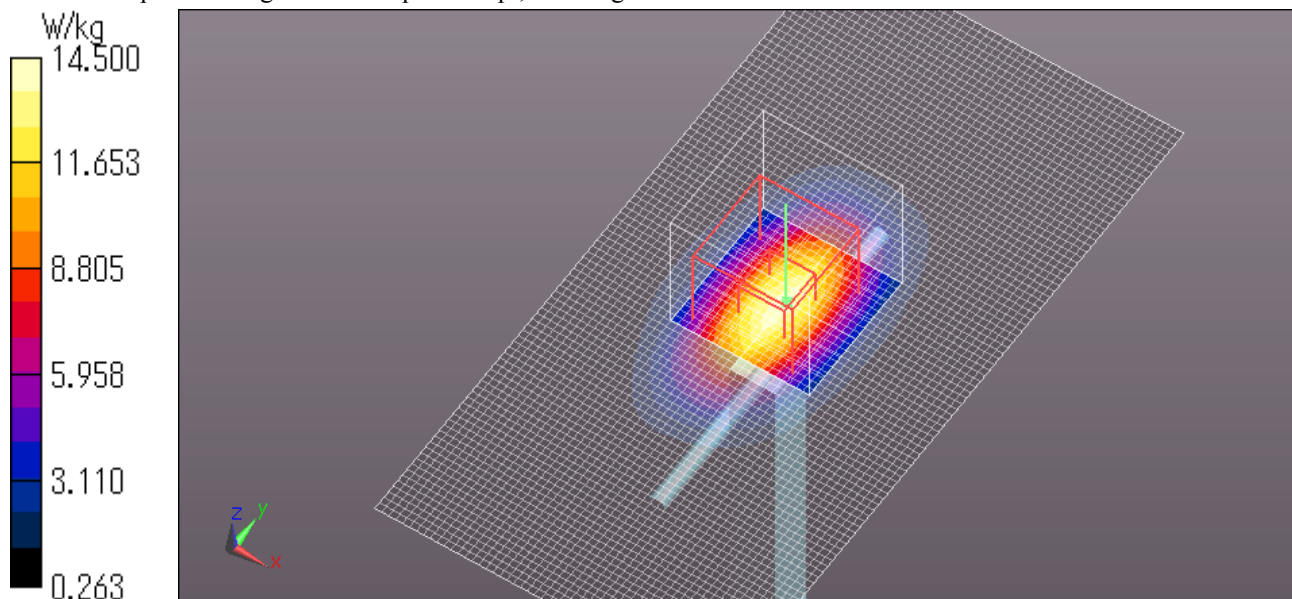
Peak SAR (extrapolated) = 18.5 W/kg

**SAR(1 g) = 10.1 W/kg; SAR(10 g) = 5.29 W/kg**

Maximum value of SAR (measured) = 14.5 W/kg

Date: 2013/05/15

Ambient Temp. : 24.0 degree.C. Liquid Temp.; 23.5 degree.C.



**UL Japan, Inc.**

**Head Office EMC Lab.**

4383-326 Asama-cho, Ise-shi, Mie-ken 516-0021 JAPAN

Telephone: +81 596 24 8999

Facsimile: +81 596 24 8124

**System validation result Head 2450**

**Simulated Tissue Liquid Parameter confirmation**

DIELECTRIC PARAMETERS MEASUREMENT RESULTS										
Date	Ambient Temp. [deg.c]	Relative Humidity [%]	Liquid type	Liquid Temp. [deg.c]	Measured Frequency [MHz]	Parameters	Target Value*1	Measured	Deviation [%]	Limit [%]
24-Apr	24.0	53	HSL 2450	23.5	2450	$\epsilon_r$	39.2	40.1	2.3	+/-5
						$\sigma$ [mho/m]	1.80	1.85	2.8	+/-5
25-Apr	24.0	43	HSL 2450	23.5	2450	$\epsilon_r$	39.2	38.8	-0.9	+/-5
						$\sigma$ [mho/m]	1.80	1.85	2.8	+/-5

$\epsilon_r$ : Relative Permittivity /  $\sigma$  : Conductivity

\*1 The Target value is a parameter defined in FCC OET 65.

**System validation result (for IEEE1528)**

SYSTEM VALIDATION							
Date	Frequency [MHz]	SAR 1g [W/kg]			Target 1W *1	Deviation [%]	Limit [%]
		Forward Power 250mW		Conversion 1W			
		Measured	Calculation				
24-Apr	2450.00	13.60	54.40	51.60	5.4	+/-10	
25-Apr	2450.00	13.50	54.00	51.60	4.7	+/-10	

\*1 The target value is the parameter defined in IEEE 1528.

**UL Japan, Inc.**

**Head Office EMC Lab.**

4383-326 Asama-cho, Ise-shi, Mie-ken 516-0021 JAPAN

Telephone: +81 596 24 8999

Facsimile: +81 596 24 8124

**2450MHz System Validation DATA / Dipole2.4GHz / Forward Conducted Power : 250mW**

Communication System: CW; Communication System Band: D2450 (2450.0 MHz); Frequency: 2450 MHz; Duty Cycle: 1:1

Medium parameters used:  $f = 2450$  MHz;  $\sigma = 1.853$  mho/m;  $\epsilon_r = 40.137$ ;  $\rho = 1000$  kg/m<sup>3</sup>

Phantom section: Flat Section

Measurement Standard: DASYS (IEEE/IEC/ANSI C63.19-2007)

DASY5 Configuration

Probe: EX3DV4 - SN3825; ConvF(7.21, 7.21, 7.21); Calibrated: 2012/12/10;

Sensor-Surface: 2mm (Mechanical Surface Detection)

Electronics: DAE4 Sn509; Calibrated: 2012/07/13

Phantom: SAM with CRP; Type: SAM;

Measurement SW: DASYS2, Version 52.8 (3);

**Area Scan (61x61x1):** Interpolated grid:  $dx=1.500$  mm,  $dy=1.500$  mm

Maximum value of SAR (interpolated) = 21.2 W/kg

**Zoom Scan (7x7x7)/Cube 0:** Measurement grid:  $dx=5$ mm,  $dy=5$ mm,  $dz=5$ mm

Reference Value = 108.8 V/m; Power Drift = 0.03 dB

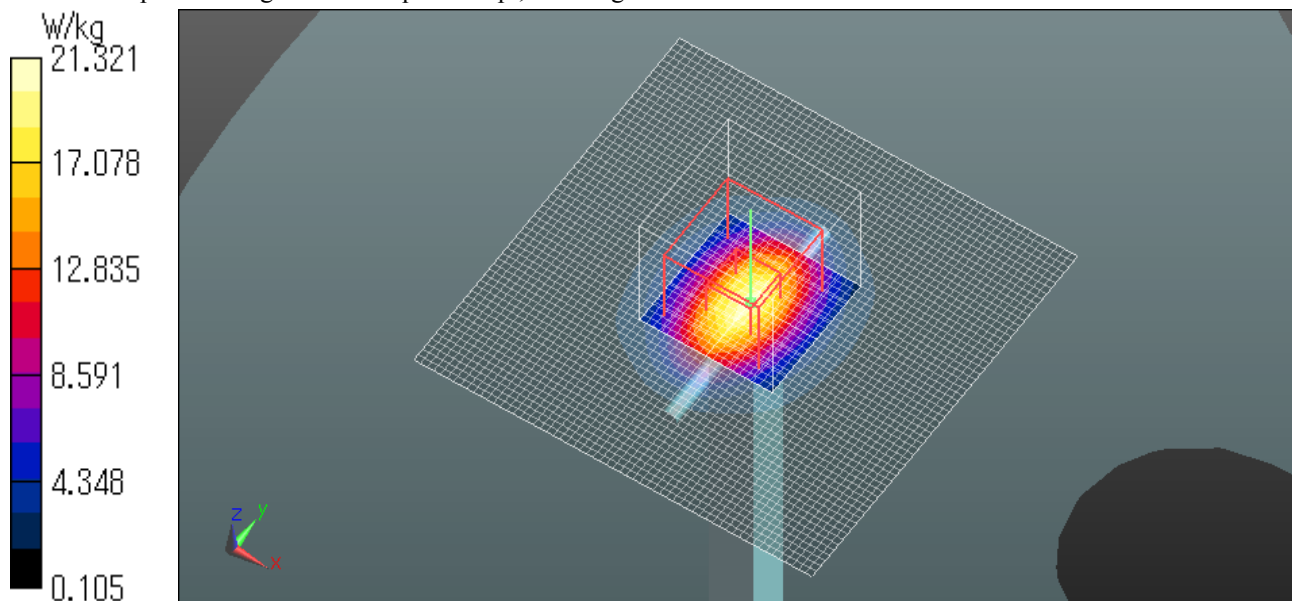
Peak SAR (extrapolated) = 29.5 W/kg

**SAR(1 g) = 13.6 W/kg; SAR(10 g) = 6.17 W/kg**

Maximum value of SAR (measured) = 21.3 W/kg

Date: 2013/04/24

Ambient Temp. : 24.0 degree.C. Liquid Temp.; 23.5 degree.C.



**UL Japan, Inc.**

**Head Office EMC Lab.**

4383-326 Asama-cho, Ise-shi, Mie-ken 516-0021 JAPAN

Telephone: +81 596 24 8999

Facsimile: +81 596 24 8124

---

**2450MHz System Validation DATA / Dipole2.4GHz / Forward Conducted Power : 250mW**

Communication System: CW; Communication System Band: D2450 (2450.0 MHz); Frequency: 2450 MHz; Duty Cycle: 1:1

Medium parameters used:  $f = 2450$  MHz;  $\sigma = 1.853$  mho/m;  $\epsilon_r = 38.834$ ;  $\rho = 1000$  kg/m<sup>3</sup>

Phantom section: Flat Section

Measurement Standard: DASYS (IEEE/IEC/ANSI C63.19-2007)

DASY5 Configuration

Probe: EX3DV4 - SN3825; ConvF(7.21, 7.21, 7.21); Calibrated: 2012/12/10;

Sensor-Surface: 2mm (Mechanical Surface Detection)

Electronics: DAE4 Sn509; Calibrated: 2012/07/13

Phantom: SAM with CRP; Type: SAM;

Measurement SW: DASYS2, Version 52.8 (3);

**Area Scan (61x61x1):** Interpolated grid: dx=1.500 mm, dy=1.500 mm

Maximum value of SAR (interpolated) = 20.9 W/kg

**Zoom Scan (7x7x7)/Cube 0:** Measurement grid: dx=5mm, dy=5mm, dz=5mm

Reference Value = 107.7 V/m; Power Drift = 0.18 dB

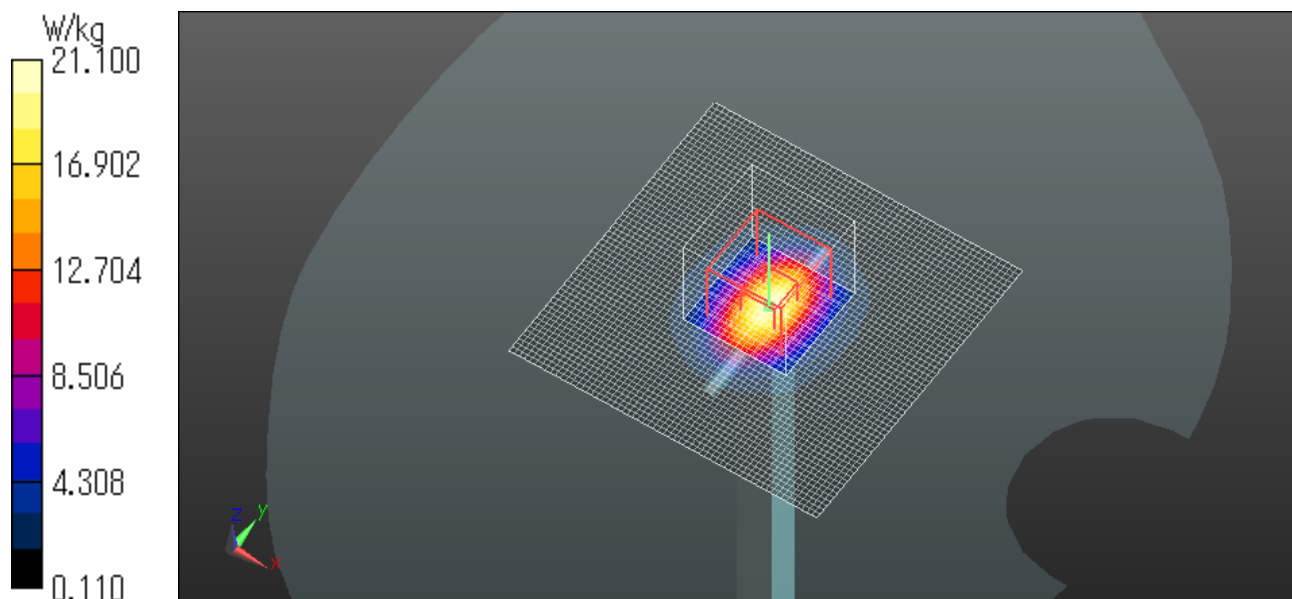
Peak SAR (extrapolated) = 29.0 W/kg

**SAR(1 g) = 13.5 W/kg; SAR(10 g) = 6.16 W/kg**

Maximum value of SAR (measured) = 21.1 W/kg

Date: 2013/04/25

Ambient Temp. : 24.0 degree.C. Liquid Temp.; 23.5 degree.C.



---

**UL Japan, Inc.**

**Head Office EMC Lab.**

4383-326 Asama-cho, Ise-shi, Mie-ken 516-0021 JAPAN

Telephone: +81 596 24 8999

Facsimile: +81 596 24 8124

**System validation result Body 2450**  
**Simulated Tissue Liquid Parameter confirmation**

DIELECTRIC PARAMETERS MEASUREMENT RESULTS										
Date	Ambient Temp. [deg.c]	Relative Humidity [%]	Liquid type	Liquid Temp. [deg.c]	Measured Frequency [MHz]	Parameters	Target Value*1	Measured	Deviation [%]	Limit [%]
24-Apr	24.0	53	MSL 2450	23.5	2450	$\epsilon_r$	52.7	51.8	-1.8	+/-5
						$\sigma$ [mho/m]	1.95	2.00	2.5	+/-5
25-Apr	24.0	43	MSL 2450	23.5	2450	$\epsilon_r$	52.7	52.0	-1.2	+/-5
						$\sigma$ [mho/m]	1.95	2.02	3.7	+/-5

$\epsilon_r$ : Relative Permittivity /  $\sigma$  : Conductivity

\*1 The Target value is a parameter defined in FCC OET65.

DIELECTRIC PARAMETERS MEASUREMENT RESULTS										
Date	Ambient Temp. [deg.c]	Relative Humidity [%]	Liquid type	Liquid Temp. [deg.c]	Measured Frequency [MHz]	Parameters	Target Value*2	Measured	Deviation [%]	Limit*3 [%]
24-Apr	24.0	53	MSL 2450	23.5	2450	$\epsilon_r$	52.5	51.8	-1.4	+/-6
						$\sigma$ [mho/m]	1.95	2.00	2.5	+/-6
25-Apr	24.0	43	MSL 2450	23.5	2450	$\epsilon_r$	52.5	52.0	-0.9	+/-6
						$\sigma$ [mho/m]	1.95	2.02	3.7	+/-6

$\epsilon_r$ : Relative Permittivity /  $\sigma$  : Conductivity

\*2 The target value is the calibrated dipole Body TSL parameters. (D2450V2 SN:713, Measured Body TSL parameters)

\*3 The limit is for deviation provided by manufacture.

**System validation result (for calibration by manufacture)**

SYSTEM VALIDATION							
Date	Frequency [MHz]	SAR 1g [W/kg]			Target 1W *1	Deviation [%]	Limit [%]
		Forward Power 250mW	Conversion 1W				
		Measured	Calculation				
24-Apr	2450.00	13.70	54.80		52.00	5.4	+/-10
25-Apr	2450.00	13.70	54.80		52.00	5.4	+/-10

\*1 The target value is the parameter defined in 1g SAR (normalizes to 1W) in manufacturer calibrated dipole (D2450V2 SN:713)

**UL Japan, Inc.**

**Head Office EMC Lab.**

4383-326 Asama-cho, Ise-shi, Mie-ken 516-0021 JAPAN

Telephone: +81 596 24 8999

Facsimile: +81 596 24 8124

**Body 2450MHz System Validation DATA / Dipole2.4GHz / Forward Conducted Power : 250mW**

Communication System: CW; Communication System Band: D2450 (2450.0 MHz); Frequency: 2450 MHz; Duty Cycle: 1:1

Medium parameters used:  $f = 2450$  MHz;  $\sigma = 2.002$  mho/m;  $\epsilon_r = 51.774$ ;  $\rho = 1000$  kg/m<sup>3</sup>

Phantom section: Flat Section

Measurement Standard: DASYS (IEEE/IEC/ANSI C63.19-2007)

DASY5 Configuration

Probe: EX3DV4 - SN3825; ConvF(7.33, 7.33, 7.33); Calibrated: 2012/12/10;

Sensor-Surface: 2mm (Mechanical Surface Detection)

Electronics: DAE4 Sn509; Calibrated: 2012/07/13

Phantom: ELI 4.0; Type: QDOVA001BA;

Measurement SW: DASYS2, Version 52.8 (3);

**Area Scan (61x61x1):** Interpolated grid:  $dx=1.500$  mm,  $dy=1.500$  mm

Maximum value of SAR (interpolated) = 20.7 W/kg

**Zoom Scan (7x7x7) (7x7x7)/Cube 0:** Measurement grid:  $dx=5$ mm,  $dy=5$ mm,  $dz=5$ mm

Reference Value = 104.9 V/m; Power Drift = -0.14 dB

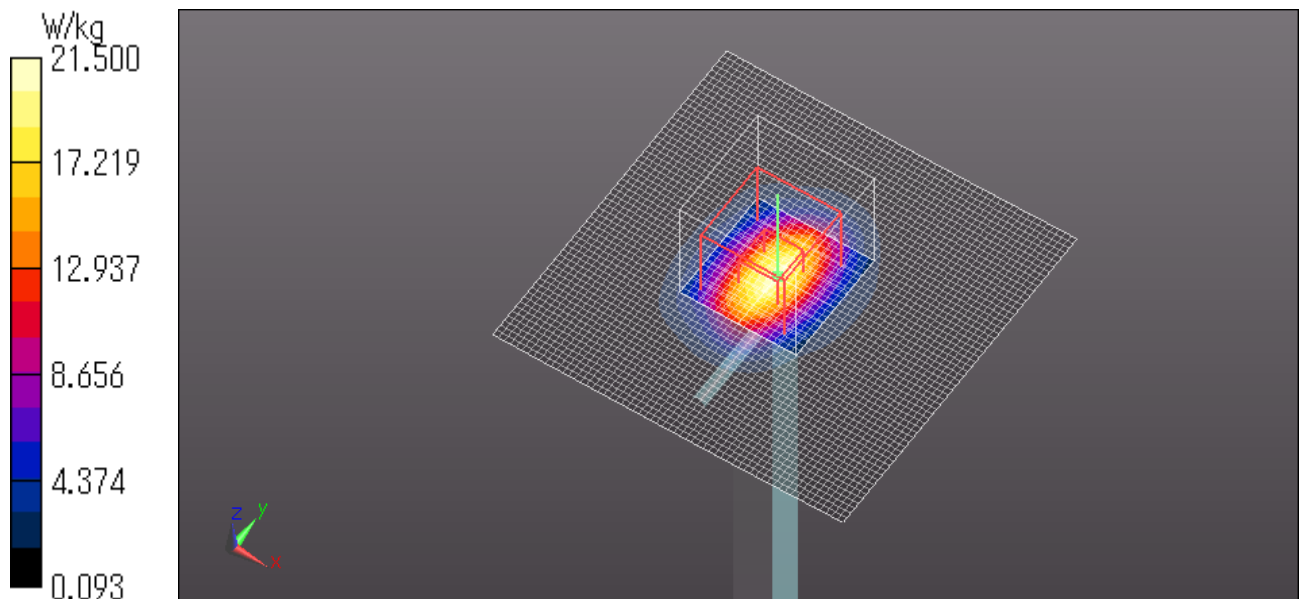
Peak SAR (extrapolated) = 30.2 W/kg

**SAR(1 g) = 13.7 W/kg; SAR(10 g) = 6.1 W/kg**

Maximum value of SAR (measured) = 21.5 W/kg

Date: 2013/04/24

Ambient Temp. : 24.0 degree.C. Liquid Temp.; 23.5 degree.C.



**UL Japan, Inc.**

**Head Office EMC Lab.**

4383-326 Asama-cho, Ise-shi, Mie-ken 516-0021 JAPAN

Telephone: +81 596 24 8999

Facsimile: +81 596 24 8124

**Body 2450MHz System Validation DATA / Dipole2.4GHz / Forward Conducted Power : 250mW**

Communication System: CW; Communication System Band: D2450 (2450.0 MHz); Frequency: 2450 MHz; Duty Cycle: 1:1

Medium parameters used:  $f = 2450$  MHz;  $\sigma = 2.024$  mho/m;  $\epsilon_r = 52.041$ ;  $\rho = 1000$  kg/m<sup>3</sup>

Phantom section: Flat Section

Measurement Standard: DASYS (IEEE/IEC/ANSI C63.19-2007)

DASY5 Configuration

Probe: EX3DV4 - SN3825; ConvF(7.33, 7.33, 7.33); Calibrated: 2012/12/10;

Sensor-Surface: 2mm (Mechanical Surface Detection)

Electronics: DAE4 Sn509; Calibrated: 2012/07/13

Phantom: ELI 4.0; Type: QDOVA001BA;

Measurement SW: DASYS2, Version 52.8 (3);

**Area Scan (61x61x1):** Interpolated grid:  $dx=1.500$  mm,  $dy=1.500$  mm

Maximum value of SAR (interpolated) = 20.2 W/kg

**Zoom Scan (7x7x7) (7x7x7)/Cube 0:** Measurement grid:  $dx=5$ mm,  $dy=5$ mm,  $dz=5$ mm

Reference Value = 104.0 V/m; Power Drift = -0.03 dB

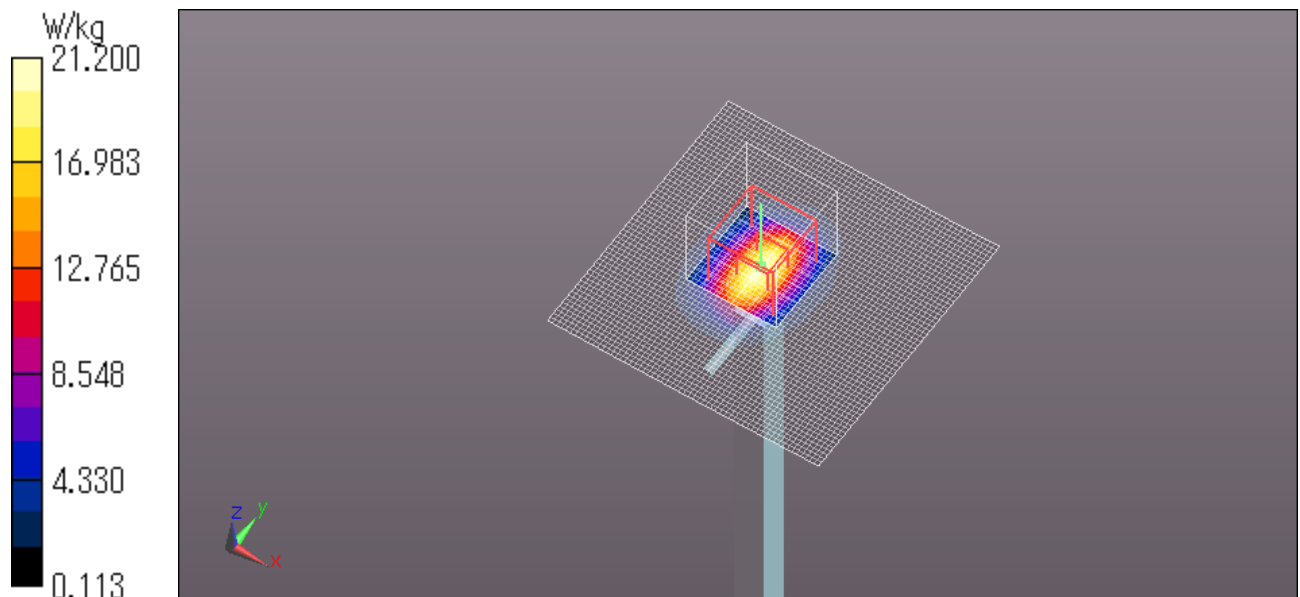
Peak SAR (extrapolated) = 29.3 W/kg

**SAR(1 g) = 13.7 W/kg; SAR(10 g) = 6.25 W/kg**

Maximum value of SAR (measured) = 21.2 W/kg

Date: 2013/04/25

Ambient Temp. : 24.0 degree.C. Liquid Temp.; 23.5 degree.C.



**UL Japan, Inc.**

**Head Office EMC Lab.**

4383-326 Asama-cho, Ise-shi, Mie-ken 516-0021 JAPAN

Telephone: +81 596 24 8999

Facsimile: +81 596 24 8124

2. System Validation Dipole (D900V2,S/N: 155)

Calibration Laboratory of  
Schmid & Partner  
Engineering AG  
Zeughausstrasse 43, 8004 Zurich, Switzerland



S Schweizerischer Kalibrierdienst  
C Service suisse d'étalonnage  
S Servizio svizzero di taratura  
S Swiss Calibration Service

Accredited by the Swiss Accreditation Service (SAS)  
The Swiss Accreditation Service is one of the signatories to the EA  
Multilateral Agreement for the recognition of calibration certificates

Accreditation No.: SCS 108

Client **UL Japan (PTT)**

Certificate No: **D900V2-155\_Dec10**

**CALIBRATION CERTIFICATE**

Object **D900V2 - SN: 155**

Calibration procedure(s) **QA CAL-05.v7  
Calibration procedure for dipole validation kits**

Calibration date: **December 06, 2010**

This calibration certificate documents the traceability to national standards, which realize the physical units of measurements (SI).  
The measurements and the uncertainties with confidence probability are given on the following pages and are part of the certificate.

All calibrations have been conducted in the closed laboratory facility: environment temperature (22 ± 3)°C and humidity < 70%.

Calibration Equipment used (M&TE critical for calibration)

Primary Standards	ID #	Cal Date (Certificate No.)	Scheduled Calibration
Power meter EPM-442A	GB37480704	06-Oct-10 (No. 217-01266)	Oct-11
Power sensor HP 8481A	US37292783	06-Oct-10 (No. 217-01266)	Oct-11
Reference 20 dB Attenuator	SN: 5086 (20g)	30-Mar-10 (No. 217-01158)	Mar-11
Type-N mismatch combination	SN: 5047.2 / 06327	30-Mar-10 (No. 217-01162)	Mar-11
Reference Probe ES3DV3	SN: 3205	30-Apr-10 (No. ES3-3205_Apr10)	Apr-11
DAE4	SN: 801	10-Jun-10 (No. DAE4-601_Jun10)	Jun-11
Secondary Standards	ID #	Check Date (in house)	Scheduled Check
Power sensor HP 8481A	MY41092317	18-Oct-02 (in house check Oct-09)	In house check: Oct-11
RF generator R&S SMT-05	100005	4-Aug-99 (in house check Oct-09)	In house check: Oct-11
Network Analyzer HP 8753E	US37390585 S4206	18-Oct-01 (in house check Oct-10)	In house check: Oct-11

	Name	Function	Signature
Calibrated by:	Dimce Iliev	Laboratory Technician	
Approved by:	Katja Pokovic	Technical Manager	

Issued: December 7, 2010

This calibration certificate shall not be reproduced except in full without written approval of the laboratory.

**Calibration Laboratory of  
Schmid & Partner  
Engineering AG**  
Zeughausstrasse 43, 8004 Zurich, Switzerland



**S** Schweizerischer Kalibrierdienst  
**C** Service suisse d'étalonnage  
**S** Servizio svizzero di taratura  
**S** Swiss Calibration Service

Accredited by the Swiss Accreditation Service (SAS)  
The Swiss Accreditation Service is one of the signatories to the EA  
Multilateral Agreement for the recognition of calibration certificates

Accreditation No.: **SCS 108**

**Glossary:**

TSL tissue simulating liquid  
ConvF sensitivity in TSL / NORM x,y,z  
N/A not applicable or not measured

**Calibration is Performed According to the Following Standards:**

- IEEE Std 1528-2003, "IEEE Recommended Practice for Determining the Peak Spatial-Averaged Specific Absorption Rate (SAR) in the Human Head from Wireless Communications Devices: Measurement Techniques", December 2003
- IEC 62209-1, "Procedure to measure the Specific Absorption Rate (SAR) for hand-held devices used in close proximity to the ear (frequency range of 300 MHz to 3 GHz)", February 2005
- Federal Communications Commission Office of Engineering & Technology (FCC OET), "Evaluating Compliance with FCC Guidelines for Human Exposure to Radiofrequency Electromagnetic Fields; Additional Information for Evaluating Compliance of Mobile and Portable Devices with FCC Limits for Human Exposure to Radiofrequency Emissions", Supplement C (Edition 01-01) to Bulletin 65

**Additional Documentation:**

- DASY4/5 System Handbook

**Methods Applied and Interpretation of Parameters:**

- Measurement Conditions:* Further details are available from the Validation Report at the end of the certificate. All figures stated in the certificate are valid at the frequency indicated.
- Antenna Parameters with TSL:* The dipole is mounted with the spacer to position its feed point exactly below the center marking of the flat phantom section, with the arms oriented parallel to the body axis.
- Feed Point Impedance and Return Loss:* These parameters are measured with the dipole positioned under the liquid filled phantom. The impedance stated is transformed from the measurement at the SMA connector to the feed point. The Return Loss ensures low reflected power. No uncertainty required.
- Electrical Delay:* One-way delay between the SMA connector and the antenna feed point. No uncertainty required.
- SAR measured:* SAR measured at the stated antenna input power.
- SAR normalized:* SAR as measured, normalized to an input power of 1 W at the antenna connector.
- SAR for nominal TSL parameters:* The measured TSL parameters are used to calculate the nominal SAR result.

**UL Japan, Inc.**

**Head Office EMC Lab.**

4383-326 Asama-cho, Ise-shi, Mie-ken 516-0021 JAPAN

Telephone: +81 596 24 8999

Facsimile: +81 596 24 8124

### Measurement Conditions

DASY system configuration, as far as not given on page 1.

DASY Version	DASY5	V52.2
Extrapolation	Advanced Extrapolation	
Phantom	Modular Flat Phantom V4.9	
Distance Dipole Center - TSL	15 mm	with Spacer
Zoom Scan Resolution	dx, dy, dz = 5 mm	
Frequency	900 MHz ± 1 MHz	

### Head TSL parameters

The following parameters and calculations were applied.

	Temperature	Permittivity	Conductivity
Nominal Head TSL parameters	22.2 °C	41.5	0.97 mho/m
Measured Head TSL parameters	(22.0 ± 0.2) °C	40.8 ± 6 %	0.95 mho/m ± 6 %
Head TSL temperature during test	(21.0 ± 0.2) °C	----	----

### SAR result with Head TSL

SAR averaged over 1 cm <sup>3</sup> (1 g) of Head TSL	Condition	
SAR measured	250 mW input power	2.70 mW / g
SAR normalized	normalized to 1W	10.8 mW / g
SAR for nominal Head TSL parameters	normalized to 1W	<b>10.9 mW / g ± 17.0 % (k=2)</b>

SAR averaged over 10 cm <sup>3</sup> (10 g) of Head TSL	condition	
SAR measured	250 mW input power	1.73 mW / g
SAR normalized	normalized to 1W	6.92 mW / g
SAR for nominal Head TSL parameters	normalized to 1W	<b>6.98 mW / g ± 16.5 % (k=2)</b>

### Body TSL parameters

The following parameters and calculations were applied.

	Temperature	Permittivity	Conductivity
Nominal Body TSL parameters	22.0 °C	55.0	1.05 mho/m
Measured Body TSL parameters	(22.0 ± 0.2) °C	53.6 ± 6 %	1.05 mho/m ± 6 %
Body TSL temperature during test	(21.0 ± 0.2) °C	----	----

### SAR result with Body TSL

SAR averaged over 1 cm <sup>3</sup> (1 g) of Body TSL	Condition	
SAR measured	250 mW input power	2.75 mW / g
SAR normalized	normalized to 1W	11.0 mW / g
SAR for nominal Body TSL parameters	normalized to 1W	<b>10.9 mW / g ± 17.0 % (k=2)</b>

SAR averaged over 10 cm <sup>3</sup> (10 g) of Body TSL	condition	
SAR measured	250 mW input power	1.77 mW / g
SAR normalized	normalized to 1W	7.08 mW / g
SAR for nominal Body TSL parameters	normalized to 1W	<b>7.05 mW / g ± 16.5 % (k=2)</b>

## Appendix

### Antenna Parameters with Head TSL

Impedance, transformed to feed point	49.0 $\Omega$ - 9.8 j $\Omega$
Return Loss	- 20.1 dB

### Antenna Parameters with Body TSL

Impedance, transformed to feed point	46.4 $\Omega$ - 11.6 j $\Omega$
Return Loss	- 18.0 dB

### General Antenna Parameters and Design

Electrical Delay (one direction)	1.393 ns
----------------------------------	----------

After long term use with 100W radiated power, only a slight warming of the dipole near the feedpoint can be measured.

The dipole is made of standard semirigid coaxial cable. The center conductor of the feeding line is directly connected to the second arm of the dipole. The antenna is therefore short-circuited for DC-signals.

No excessive force must be applied to the dipole arms, because they might bend or the soldered connections near the feedpoint may be damaged.

### Additional EUT Data

Manufactured by	SPEAG
Manufactured on	March 01, 2002

## DASY5 Validation Report for Head TSL

Date/Time: 06.12.2010 10:26:37

Test Laboratory: SPEAG, Zurich, Switzerland

**DUT: Dipole 900 MHz; Type: D900V2; Serial: D900V2 - SN:155**

Communication System: CW; Frequency: 900 MHz; Duty Cycle: 1:1

Medium: HSL900

Medium parameters used:  $f = 900$  MHz;  $\sigma = 0.95$  mho/m;  $\epsilon_r = 40.7$ ;  $\rho = 1000$  kg/m<sup>3</sup>

Phantom section: Flat Section

Measurement Standard: DASY5 (IEEE/IEC/ANSI C63.19-2007)

DASY5 Configuration:

- Probe: ES3DV3 - SN3205; ConvF(5.88, 5.88, 5.88); Calibrated: 30.04.2010
- Sensor-Surface: 3mm (Mechanical Surface Detection)
- Electronics: DAE4 Sn601; Calibrated: 10.06.2010
- Phantom: Flat Phantom 4.9L; Type: QD000P49AA; Serial: 1001
- Measurement SW: DASY52, V52.2 Build 0, Version 52.2.0 (163)
- Postprocessing SW: SEMCAD X, V14.2 Build 2, Version 14.2.2 (1685)

**Pin=250 mW /d=15mm, dist=3.0mm (ES-Probe)/Zoom Scan (7x7x7) /Cube 0: Measurement**

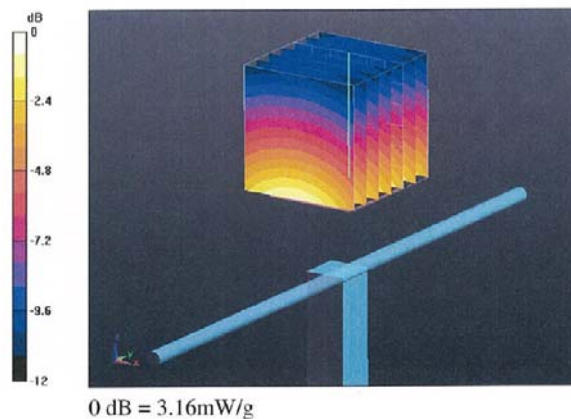
grid: dx=5mm, dy=5mm, dz=5mm

Reference Value = 59.3 V/m; Power Drift = 0.025 dB

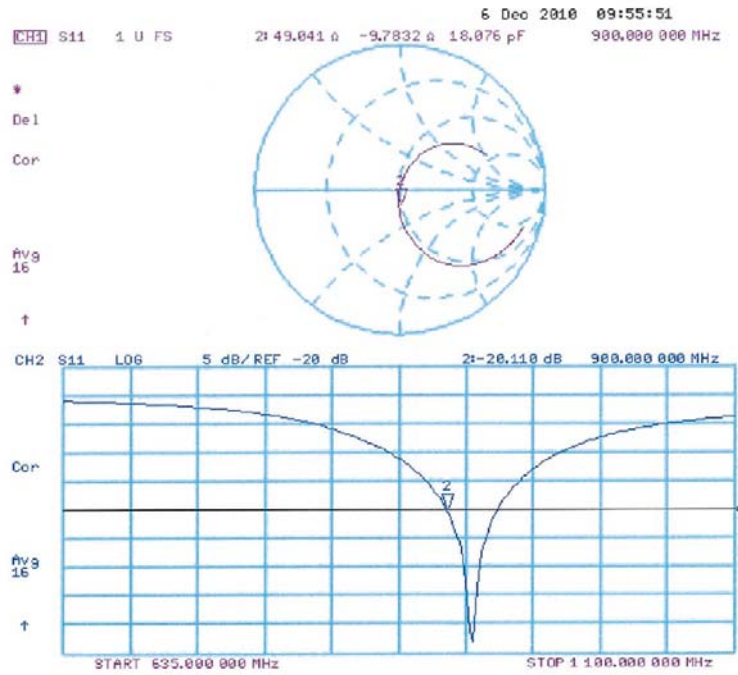
Peak SAR (extrapolated) = 4.1 W/kg

**SAR(1 g) = 2.7 mW/g; SAR(10 g) = 1.73 mW/g**

Maximum value of SAR (measured) = 3.16 mW/g



Impedance Measurement Plot for Head TSL



## DASY5 Validation Report for Body

Date/Time: 06.12.2010 12:58:52

Test Laboratory: SPEAG, Zurich, Switzerland

**DUT: Dipole 900 MHz; Type: D900V2; Serial: D900V2 - SN:155**

Communication System: CW; Frequency: 900 MHz; Duty Cycle: 1:1

Medium: M900

Medium parameters used:  $f = 900$  MHz;  $\sigma = 1.05$  mho/m;  $\epsilon_r = 53.6$ ;  $\rho = 1000$  kg/m<sup>3</sup>

Phantom section: Flat Section

Measurement Standard: DASY5 (IEEE/IEC/ANSI C63.19-2007)

DASY5 Configuration:

- Probe: ES3DV3 - SN3205; ConvF(5.81, 5.81, 5.81); Calibrated: 30.04.2010
- Sensor-Surface: 3mm (Mechanical Surface Detection)
- Electronics: DAE4 Sn601; Calibrated: 10.06.2010
- Phantom: Flat Phantom 4.9L; Type: QD000P49AA; Serial: 1001
- Measurement SW: DASY52, V52.2 Build 0, Version 52.2.0 (163)
- Postprocessing SW: SEMCAD X, V14.2 Build 2, Version 14.2.2 (1685)

**Pin=250 mW /d=15mm, dist=3.0mm (ES-Probe)/Zoom Scan (7x7x7) /Cube 0: Measurement**

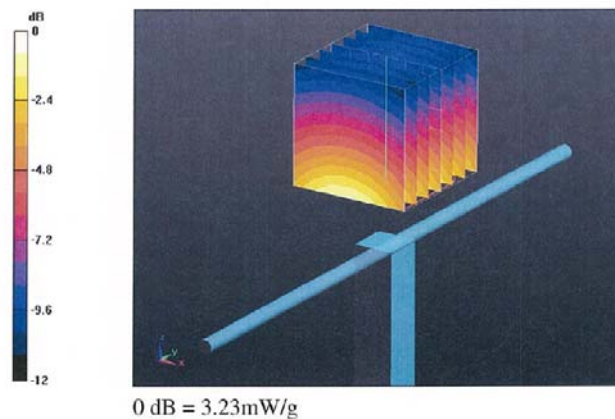
grid: dx=5mm, dy=5mm, dz=5mm

Reference Value = 57.3 V/m; Power Drift = -0.016 dB

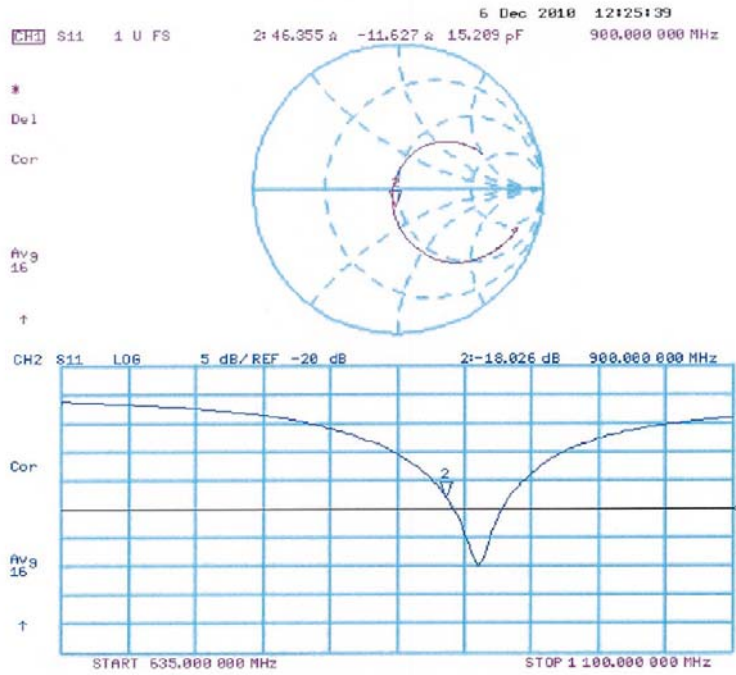
Peak SAR (extrapolated) = 4.13 W/kg

**SAR(1 g) = 2.75 mW/g; SAR(10 g) = 1.77 mW/g**

Maximum value of SAR (measured) = 3.23 mW/g



Impedance Measurement Plot for Body TSL



D900V2 Calibration for Impedance and Return-loss

1. Test environment

Date	December 6,2012		
Ambient Temperature	24.0 deg.C	Relative humidity	42 %RH

2. Equipment used

Control No.	Instrument	Manufacturer	Model No	Serial No	Calibration Date * Interval(month)
MNA-01	Network Analyzer	Agilent/HP	E8358A	US41080381	2012/09/14 * 12
EST-46	3.5mm Calibration Kit	Agilent	85052D	MY43252869	2012/08/13 * 12
MDA-05	Dipole Antenna	Schmid&Partner Engineering AG	D900V2	155	2010/12/06 * 36
MCC-132	Microwave Cable	HUBER+SUHNER	SUCOFLEX104	336161/4(1m)	2012/09/05 * 12
MPS-02	SAM Phantom	Schmid&Partner Engineering AG	SAM Twin Phantom V4.0	1333	2012/05/07 * 12
MOS-26	Thermo-Hygrometer	Custom	CTH-201	A08Q29	2012/05/14 * 12
HSL900					Daily check
MSL900					Daily check
SAR room					Daily check

3. Test Result

Impedance,Transformed to feed point	Head	Deviation	Tolerance	Result
Calibration (SPEAG) 2010/12/06	49.0 Ω-9.8jΩ	-	-	-
Calibration(ULJ)2012/12/06	48.37Ω-9.811jΩ	-0.63Ω-0.011jΩ	+/-5Ω+/-5jΩ	Complied

Return loss	Head	Deviation	Tolerance	Result
Calibration (SPEAG) 2010/12/06	-20.1dB	-	-	-
Calibration(ULJ)2012/12/06	-19.95dB	0.15dB	20.1 *+/-20%	Complied
Impedance,Transformed to feed point	Body	Deviation	Tolerance	Result
Calibration (SPEAG) 2010/12/06	46.4 Ω-11.6jΩ	-	-	-
Calibration(ULJ)2012/12/06	46.91Ω-10.11jΩ	0.51Ω+1.49jΩ	+/-5Ω+/-5jΩ	Complied

Return loss	Body	Deviation	Tolerance	Result
Calibration (SPEAG) 2010/12/06	-18.0dB	-	-	-
Calibration(ULJ)2012/12/06	-19.28dB	-1.28dB	18*+/-20%	Complied

\*Tolerance : According to the KDB450824D02

UL Japan, Inc.

Head Office EMC Lab.

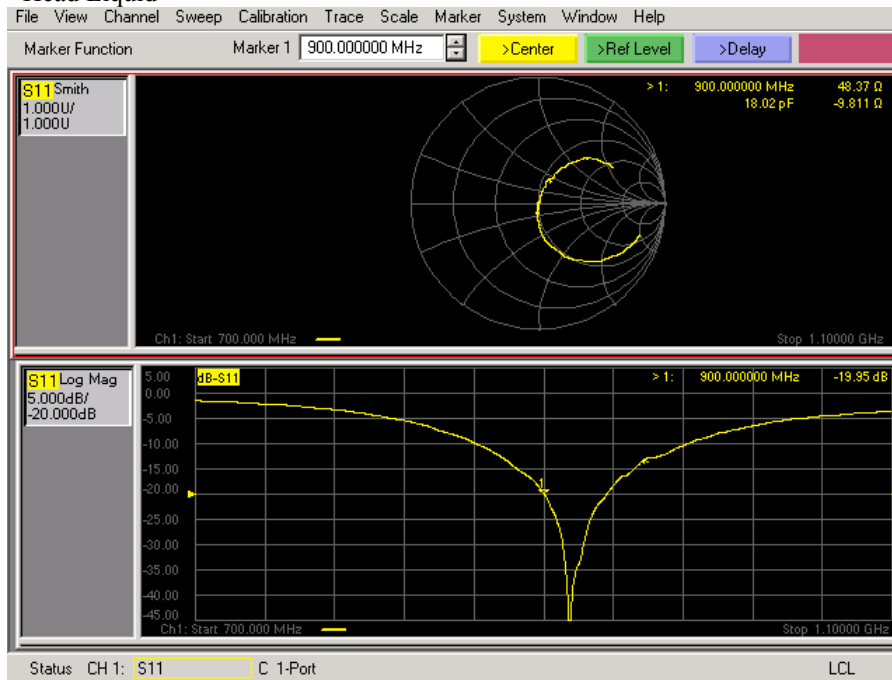
4383-326 Asama-cho, Ise-shi, Mie-ken 516-0021 JAPAN

Telephone: +81 596 24 8999

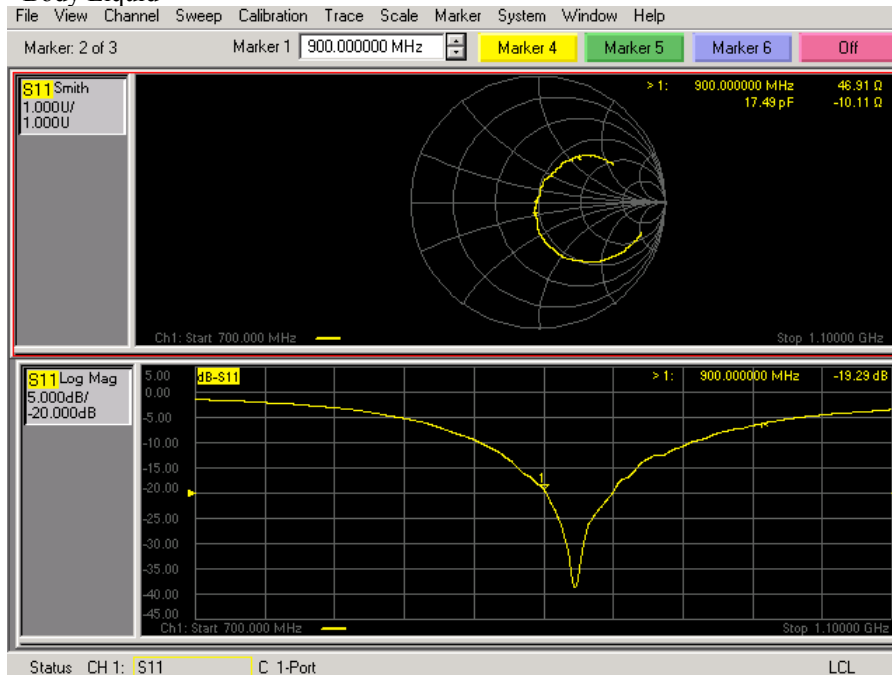
Facsimile: +81 596 24 8124

Measurement Plots

<Head Liquid>



<Body Liquid>



UL Japan, Inc.

Head Office EMC Lab.

4383-326 Asama-cho, Ise-shi, Mie-ken 516-0021 JAPAN

Telephone: +81 596 24 8999

Facsimile: +81 596 24 8124

3. System Validation Dipole (D1800V2,S/N: 2d04)

**Calibration Laboratory of  
Schmid & Partner  
Engineering AG**  
Zeughausstrasse 43, 8004 Zurich, Switzerland



**S** Schweizerischer Kalibrierdienst  
**C** Service suisse d'étalonnage  
**S** Servizio svizzero di taratura  
**S** Swiss Calibration Service

Accredited by the Swiss Accreditation Service (SAS)  
The Swiss Accreditation Service is one of the signatories to the EA  
Multilateral Agreement for the recognition of calibration certificates

Accreditation No.: SCS 108

Client **UL Japan (PTT)**

Certificate No: D1800V2-2d040\_Dec10

**CALIBRATION CERTIFICATE**

Object: D1800V2 - SN: 2d040  
Calibration procedure(s): QA CAL-05.v7  
Calibration procedure for dipole validation kits  
Calibration date: December 09, 2010

This calibration certificate documents the traceability to national standards, which realize the physical units of measurements (SI).  
The measurements and the uncertainties with confidence probability are given on the following pages and are part of the certificate.

All calibrations have been conducted in the closed laboratory facility: environment temperature (22 ± 3)°C and humidity < 70%.

Calibration Equipment used (M&TE critical for calibration)

Primary Standards	ID #	Cal Date (Certificate No.)	Scheduled Calibration
Power meter EPM-442A	GB37480704	06-Oct-10 (No. 217-01266)	Oct-11
Power sensor HP 8481A	US37292783	06-Oct-10 (No. 217-01266)	Oct-11
Reference 20 dB Attenuator	SN: 5086 (20g)	30-Mar-10 (No. 217-01158)	Mar-11
Type-N mismatch combination	SN: 5047.2 / 06327	30-Mar-10 (No. 217-01162)	Mar-11
Reference Probe ES3DV3	SN: 3205	30-Apr-10 (No. ES3-3205_Apr10)	Apr-11
DAE4	SN: 601	10-Jun-10 (No. DAE4-601_Jun10)	Jun-11
Secondary Standards	ID #	Check Date (in house)	Scheduled Check
Power sensor HP 8481A	MY41092317	18-Oct-02 (in house check Oct-09)	In house check: Oct-11
RF generator R&S SMT-06	100005	4-Aug-99 (in house check Oct-09)	In house check: Oct-11
Network Analyzer HP 8753E	US37390585 S4206	18-Oct-01 (in house check Oct-10)	In house check: Oct-11

Calibrated by: **Dimce Iliev** (Name), Laboratory Technician (Function), *[Signature]* (Signature)  
Approved by: **Katja Pokovic** (Name), Technical Manager (Function), *[Signature]* (Signature)

Issued: December 14, 2010

This calibration certificate shall not be reproduced except in full without written approval of the laboratory.

**Calibration Laboratory of**  
Schmid & Partner  
Engineering AG  
Zeughausstrasse 43, 8004 Zurich, Switzerland



S Schweizerischer Kalibrierdienst  
C Service suisse d'étalonnage  
S Servizio svizzero di taratura  
S Swiss Calibration Service

Accredited by the Swiss Accreditation Service (SAS)  
The Swiss Accreditation Service is one of the signatories to the EA  
Multilateral Agreement for the recognition of calibration certificates

Accreditation No.: **SCS 108**

**Glossary:**

TSL tissue simulating liquid  
ConvF sensitivity in TSL / NORM x,y,z  
N/A not applicable or not measured

**Calibration is Performed According to the Following Standards:**

- a) IEEE Std 1528-2003, "IEEE Recommended Practice for Determining the Peak Spatial-Averaged Specific Absorption Rate (SAR) in the Human Head from Wireless Communications Devices: Measurement Techniques", December 2003
- b) IEC 62209-1, "Procedure to measure the Specific Absorption Rate (SAR) for hand-held devices used in close proximity to the ear (frequency range of 300 MHz to 3 GHz)", February 2005
- c) Federal Communications Commission Office of Engineering & Technology (FCC OET), "Evaluating Compliance with FCC Guidelines for Human Exposure to Radiofrequency Electromagnetic Fields; Additional Information for Evaluating Compliance of Mobile and Portable Devices with FCC Limits for Human Exposure to Radiofrequency Emissions", Supplement C (Edition 01-01) to Bulletin 65

**Additional Documentation:**

- d) DASY4/5 System Handbook

**Methods Applied and Interpretation of Parameters:**

- *Measurement Conditions:* Further details are available from the Validation Report at the end of the certificate. All figures stated in the certificate are valid at the frequency indicated.
- *Antenna Parameters with TSL:* The dipole is mounted with the spacer to position its feed point exactly below the center marking of the flat phantom section, with the arms oriented parallel to the body axis.
- *Feed Point Impedance and Return Loss:* These parameters are measured with the dipole positioned under the liquid filled phantom. The impedance stated is transformed from the measurement at the SMA connector to the feed point. The Return Loss ensures low reflected power. No uncertainty required.
- *Electrical Delay:* One-way delay between the SMA connector and the antenna feed point. No uncertainty required.
- *SAR measured:* SAR measured at the stated antenna input power.
- *SAR normalized:* SAR as measured, normalized to an input power of 1 W at the antenna connector.
- *SAR for nominal TSL parameters:* The measured TSL parameters are used to calculate the nominal SAR result.

**UL Japan, Inc.**

**Head Office EMC Lab.**

4383-326 Asama-cho, Ise-shi, Mie-ken 516-0021 JAPAN

Telephone: +81 596 24 8999

Facsimile: +81 596 24 8124

### Measurement Conditions

DASY system configuration, as far as not given on page 1.

DASY Version	DASY5	V52.2
Extrapolation	Advanced Extrapolation	
Phantom	Modular Flat Phantom V5.0	
Distance Dipole Center - TSL	10 mm	with Spacer
Zoom Scan Resolution	dx, dy, dz = 5 mm	
Frequency	1800 MHz $\pm$ 1 MHz	

### Head TSL parameters

The following parameters and calculations were applied.

	Temperature	Permittivity	Conductivity
Nominal Head TSL parameters	22.0 °C	40.0	1.40 mho/m
Measured Head TSL parameters	(22.0 $\pm$ 0.2) °C	39.6 $\pm$ 6 %	1.35 mho/m $\pm$ 6 %
Head TSL temperature during test	(21.0 $\pm$ 0.2) °C	----	----

### SAR result with Head TSL

SAR averaged over 1 cm <sup>3</sup> (1 g) of Head TSL	Condition	
SAR measured	250 mW input power	9.60 mW / g
SAR normalized	normalized to 1W	38.4 mW / g
SAR for nominal Head TSL parameters	normalized to 1W	<b>39.3 mW / g <math>\pm</math> 17.0 % (k=2)</b>

SAR averaged over 10 cm <sup>3</sup> (10 g) of Head TSL	condition	
SAR measured	250 mW input power	5.04 mW / g
SAR normalized	normalized to 1W	20.2 mW / g
SAR for nominal Head TSL parameters	normalized to 1W	<b>20.4 mW / g <math>\pm</math> 16.5 % (k=2)</b>

### Body TSL parameters

The following parameters and calculations were applied.

	Temperature	Permittivity	Conductivity
Nominal Body TSL parameters	22.0 °C	53.3	1.52 mho/m
Measured Body TSL parameters	(21.2 ± 0.2) °C	52.9 ± 6 %	1.45 mho/m ± 6 %
Body TSL temperature during test	(21.0 ± 0.2) °C	---	---

### SAR result with Body TSL

SAR averaged over 1 cm <sup>3</sup> (1 g) of Body TSL	Condition	
SAR measured	250 mW input power	9.34 mW / g
SAR normalized	normalized to 1W	37.4 mW / g
SAR for nominal Body TSL parameters	normalized to 1W	<b>38.4 mW / g ± 17.0 % (k=2)</b>

SAR averaged over 10 cm <sup>3</sup> (10 g) of Body TSL	condition	
SAR measured	250 mW input power	4.98 mW / g
SAR normalized	normalized to 1W	19.9 mW / g
SAR for nominal Body TSL parameters	normalized to 1W	<b>20.2 mW / g ± 16.5 % (k=2)</b>

## Appendix

### Antenna Parameters with Head TSL

Impedance, transformed to feed point	48.8 $\Omega$ - 1.9 j $\Omega$
Return Loss	- 33.1 dB

### Antenna Parameters with Body TSL

Impedance, transformed to feed point	44.4 $\Omega$ - 2.2 j $\Omega$
Return Loss	- 24.0 dB

### General Antenna Parameters and Design

Electrical Delay (one direction)	1.205 ns
----------------------------------	----------

After long term use with 100W radiated power, only a slight warming of the dipole near the feedpoint can be measured.

The dipole is made of standard semirigid coaxial cable. The center conductor of the feeding line is directly connected to the second arm of the dipole. The antenna is therefore short-circuited for DC-signals.

No excessive force must be applied to the dipole arms, because they might bend or the soldered connections near the feedpoint may be damaged.

### Additional EUT Data

Manufactured by	SPEAG
Manufactured on	March 27, 2002

## DASY5 Validation Report for Head TSL

Date/Time: 07.12.2010 12:17:06

Test Laboratory: SPEAG, Zurich, Switzerland

**DUT: Dipole 1800 MHz; Type: D1800V2; Serial: D1800V2 - SN:2d040**

Communication System: CW; Frequency: 1800 MHz; Duty Cycle: 1:1

Medium: HSL U12 BB

Medium parameters used:  $f = 1800$  MHz;  $\sigma = 1.34$  mho/m;  $\epsilon_r = 39.7$ ;  $\rho = 1000$  kg/m<sup>3</sup>

Phantom section: Flat Section

Measurement Standard: DASY5 (IEEE/IEC/ANSI C63.19-2007)

DASY5 Configuration:

- Probe: ES3DV3 - SN3205; ConvF(5.05, 5.05, 5.05); Calibrated: 30.04.2010
- Sensor-Surface: 3mm (Mechanical Surface Detection)
- Electronics: DAE4 Sn601; Calibrated: 10.06.2010
- Phantom: Flat Phantom 5.0 (front); Type: QD000P50AA; Serial: 1001
- Measurement SW: DASY52, V52.2 Build 0, Version 52.2.0 (163)
- Postprocessing SW: SEMCAD X, V14.2 Build 2, Version 14.2.2 (1685)

**Pin=250 mW /d=10mm, dist=3.0mm (ES-Probe)/Zoom Scan (7x7x7) /Cube 0: Measurement**

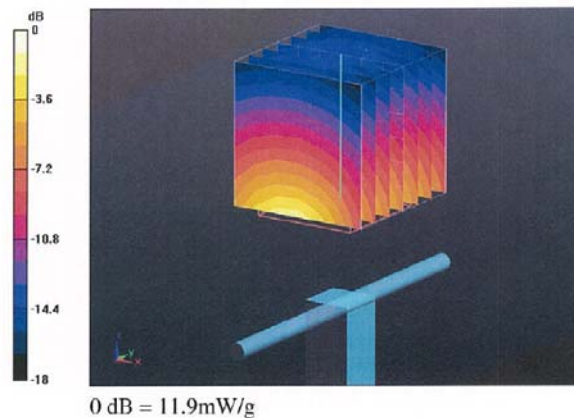
grid: dx=5mm, dy=5mm, dz=5mm

Reference Value = 97.8 V/m; Power Drift = 0.039 dB

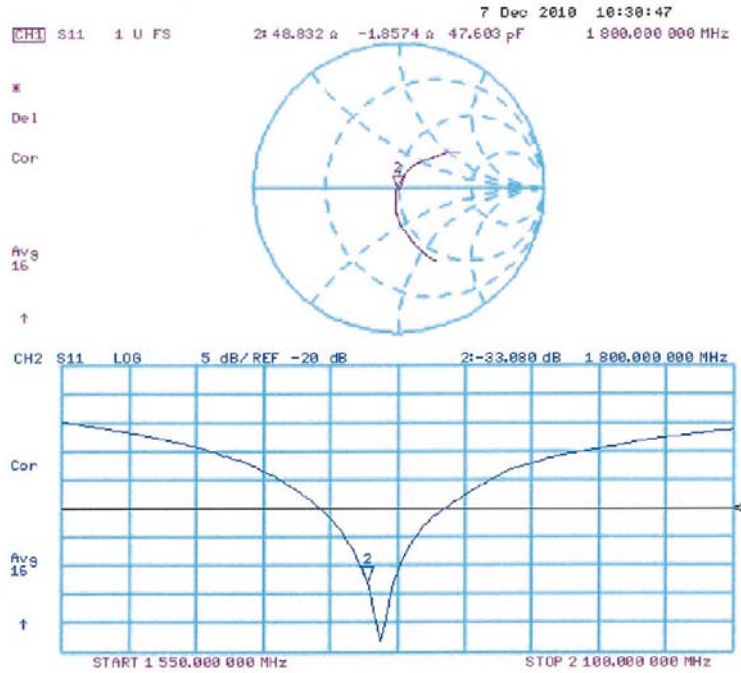
Peak SAR (extrapolated) = 17.5 W/kg

**SAR(1 g) = 9.6 mW/g; SAR(10 g) = 5.04 mW/g**

Maximum value of SAR (measured) = 11.9 mW/g



Impedance Measurement Plot for Head TSL



## DASY5 Validation Report for Body TSL

Date/Time: 09.12.2010 11:14:21

Test Laboratory: SPEAG, Zurich, Switzerland

**DUT: Dipole 1800 MHz; Type: D1800V2; Serial: D1800V2 - SN:2d040**

Communication System: CW; Frequency: 1800 MHz; Duty Cycle: 1:1

Medium: MSL U12 BB

Medium parameters used:  $f = 1800$  MHz;  $\sigma = 1.45$  mho/m;  $\epsilon_r = 53.1$ ;  $\rho = 1000$  kg/m<sup>3</sup>

Phantom section: Flat Section

Measurement Standard: DASY5 (IEEE/IEC/ANSI C63.19-2007)

DASY5 Configuration:

- Probe: ES3DV3 - SN3205; ConvF(4.74, 4.74, 4.74); Calibrated: 30.04.2010
- Sensor-Surface: 3mm (Mechanical Surface Detection)
- Electronics: DAE4 Sn601; Calibrated: 10.06.2010
- Phantom: Flat Phantom 5.0 (back); Type: QD000P50AA; Serial: 1002
- Measurement SW: DASY52, V52.2 Build 0, Version 52.2.0 (163)
- Postprocessing SW: SEMCAD X, V14.2 Build 2, Version 14.2.2 (1685)

**Pin=250 mW /d=10mm, dist=3.0mm (ES-Probe)/Zoom Scan (7x7x7) /Cube 0: Measurement**

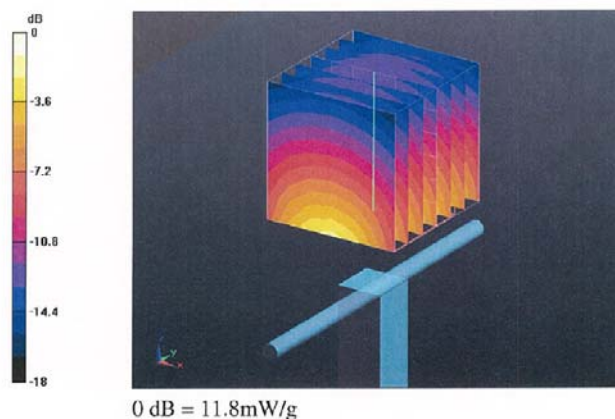
grid: dx=5mm, dy=5mm, dz=5mm

Reference Value = 94.6 V/m; Power Drift = -0.025 dB

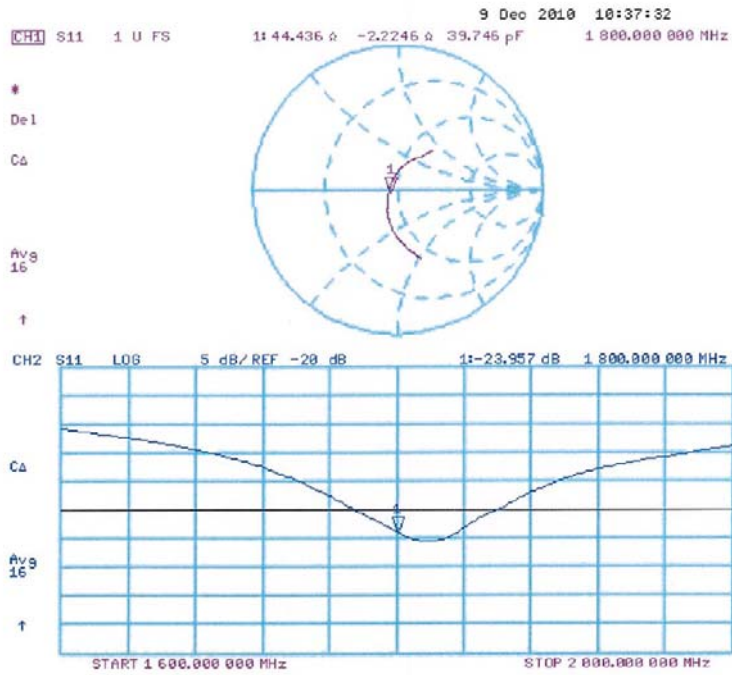
Peak SAR (extrapolated) = 16 W/kg

**SAR(1 g) = 9.34 mW/g; SAR(10 g) = 4.98 mW/g**

Maximum value of SAR (measured) = 11.8 mW/g



Impedance Measurement Plot for Body TSL



## D1800V2 Calibration for Impedance and Return-loss

### 1. Test environment

Date	November 30, 2012		
Ambient Temperature	24.0 deg.C	Relative humidity	50%RH

### 2. Equipment used

Control No.	Instrument	Manufacturer	Model No	Serial No	Calibration Date	Expiration date of the calibration
MNA-01	Network Analyzer	Agilent/HP	E8358A	US41080381	2012/09/14	2013/09/30
EST-46	3.5mm Calibration Kit	Agilent	85052D	MY43252869	2012/08/13	2013/08/31
MCC-141	Microwave Cable	Junkosha	MWX221	1203S212(1m)	2012/04/23	2013/04/30
MDA-06	Dipole Antenna	Schmid&Partner Engineering AG	D1800V2	2d040	2010/12/09	2013/12/31
MPSAM-02	SAM Phantom	Schmid&Partner Engineering AG	SAM Twin Phantom V4.0	1333	Pre Check	-
MOS-24	Thermo-Hygrometer	Custom	CTH-201	5	2012/05/14	2013/05/31
HSL2450					Daily chec	-
MSL2450					Daily chec	-
SAR room					Daily chec	-

### 3. Test Result

Impedance, Transformed to feed point	Head	Deviation	Tolerance	Result
Calibration (SPEAG) 2010/12/09	48.8 Ω-1.9jΩ	-	-	-
Calibration(ULJ)2012/11/30	48.93Ω-3.96jΩ	0.13Ω-2.06jΩ	+/-5Ω+/-5jΩ	Complied

Return loss	Head	Deviation	Tolerance	Result
Calibration (SPEAG) 2010/12/09	-33.1dB	-	-	-
Calibration(ULJ)2012/11/30	-27.66dB	5.44dB	-33.1 *+/-20%	Complied

Impedance, Transformed to feed point	Body	Deviation	Tolerance	Result
Calibration (SPEAG) 2010/12/09	44.4 Ω-2.2jΩ	-	-	-
Calibration(ULJ)2012/11/30	45.36Ω-3.36jΩ	0.96Ω-1.16jΩ	+/-5Ω+/-5jΩ	Complied

Return loss	Body	Deviation	Tolerance	Result
Calibration (SPEAG) 2010/12/09	-24.0dB	-	-	-
Calibration(ULJ)2012/11/30	-24.44dB	-0.44dB	-24*+/-20%	Complied

\*Tolerance : According to the KDB450824D02

UL Japan, Inc.

Head Office EMC Lab.

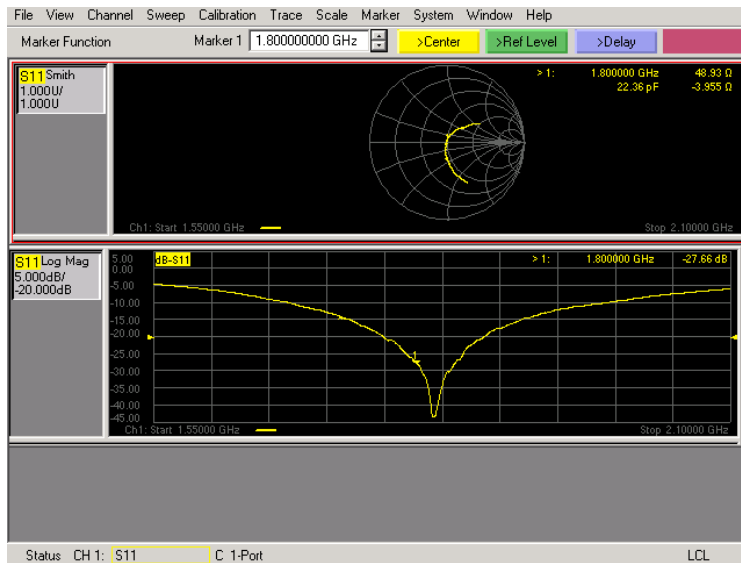
4383-326 Asama-cho, Ise-shi, Mie-ken 516-0021 JAPAN

Telephone: +81 596 24 8999

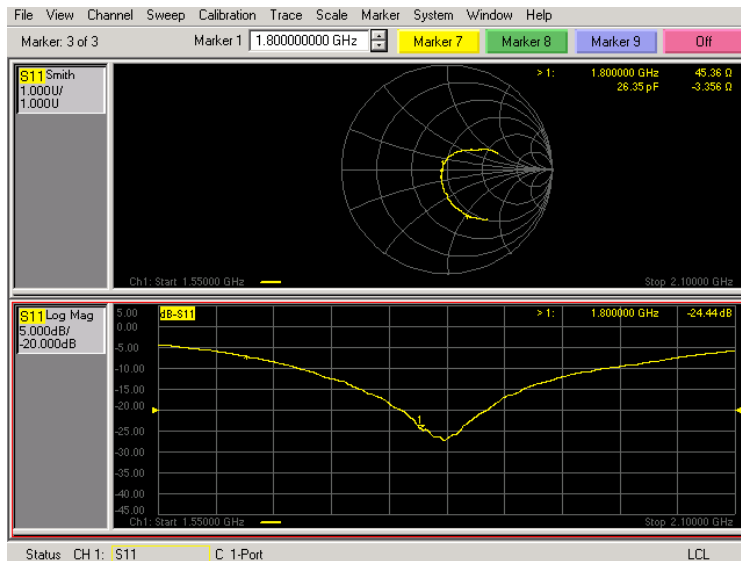
Facsimile: +81 596 24 8124

## Measurement Plots

### <Head Liquid>



### <Body Liquid>



UL Japan, Inc.

Head Office EMC Lab.

4383-326 Asama-cho, Ise-shi, Mie-ken 516-0021 JAPAN

Telephone: +81 596 24 8999

Facsimile: +81 596 24 8124