

## GSM1900

Frequency: 1880 MHz; Duty Cycle: 1:8; Room Ambient Temperature: 24.0°C; Liquid Temperature: 23.0°C

Medium parameters used:  $f = 1880$  MHz;  $\sigma = 1.394$  mho/m;  $\epsilon_r = 38.889$ ;  $\rho = 1000$  kg/m<sup>3</sup>

DASY5 Configuration:

- Area Scan Setting: Find Secondary Maximum Within: 2.0 dB and with a peak SAR value greater than 0.0012W/kg
- Electronics: DAE4 Sn1343; Calibrated: 8/20/2012
- Probe: EX3DV4 - SN3871; ConvF(8.26, 8.26, 8.26); Calibrated: 8/20/2012;
- Sensor-Surface: 2.5mm (Mechanical Surface Detection)
- Phantom: SAM with CRP; Type: SAM;

**LHS/Touch\_GSM Voice\_ch 661/Area Scan (7x12x1):** Measurement grid: dx=15mm, dy=15mm

Maximum value of SAR (measured) = 0.544 W/kg

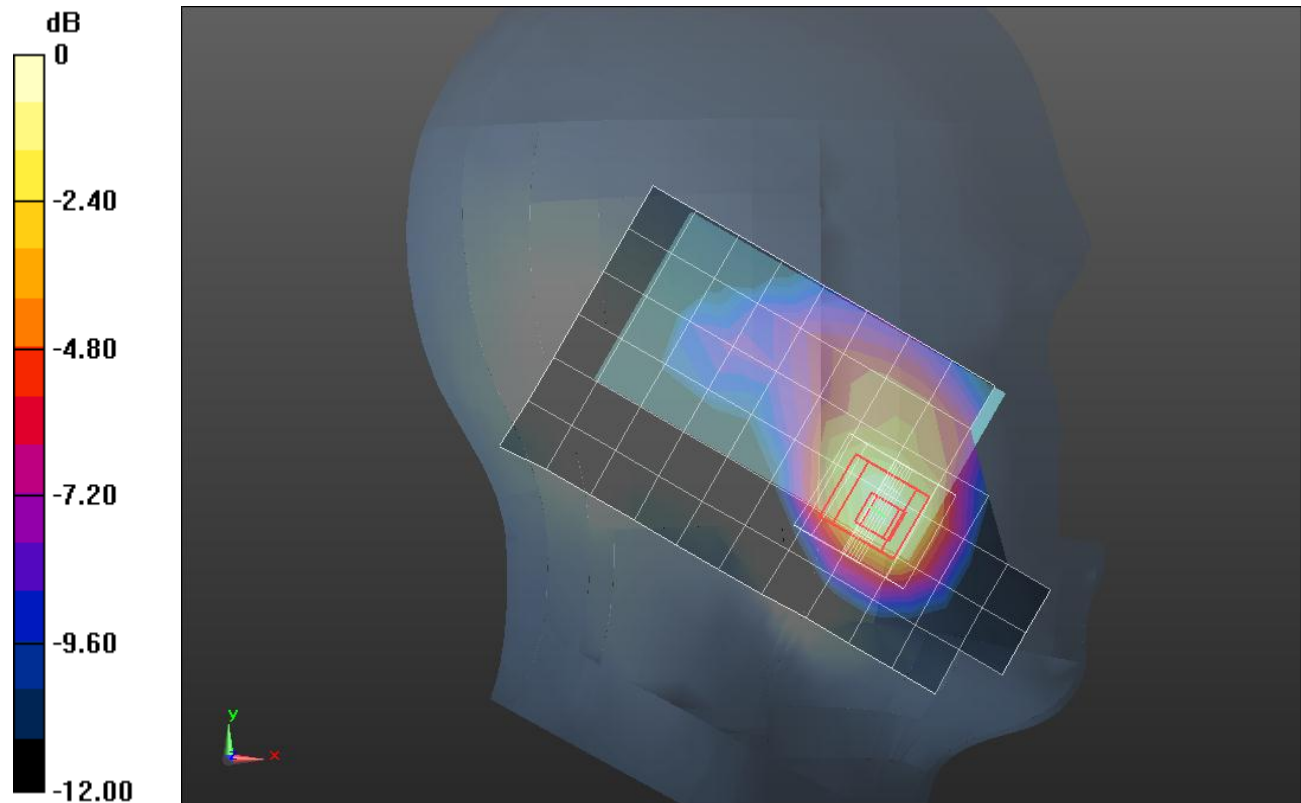
**LHS/Touch\_GSM Voice\_ch 661/Zoom Scan (5x5x7)/Cube 0:** Measurement grid: dx=8mm, dy=8mm, dz=5mm

Reference Value = 20.239 V/m; Power Drift = -0.01 dB

Peak SAR (extrapolated) = 0.833 W/kg

**SAR(1 g) = 0.499 W/kg; SAR(10 g) = 0.28 W/kg**

Maximum value of SAR (measured) = 0.647 W/kg



0 dB = 0.647 W/kg = -1.89 dBW/kg

## GSM1900

Frequency: 1880 MHz; Duty Cycle: 1:8; Room Ambient Temperature: 24.0°C; Liquid Temperature: 23.0°C  
Medium parameters used:  $f = 1880$  MHz;  $\sigma = 1.394$  mho/m;  $\epsilon_r = 38.889$ ;  $\rho = 1000$  kg/m<sup>3</sup>

DASY5 Configuration:

- Area Scan Setting: Find Secondary Maximum Within: 2.0 dB and with a peak SAR value greater than 0.0012W/kg
- Electronics: DAE4 Sn1343; Calibrated: 8/20/2012
- Probe: EX3DV4 - SN3871; ConvF(8.26, 8.26, 8.26); Calibrated: 8/20/2012;
- Sensor-Surface: 2.5mm (Mechanical Surface Detection)
- Phantom: SAM with CRP; Type: SAM;

**LHS/Tilt\_GSM Voice\_ch 661/Area Scan (7x12x1):** Measurement grid: dx=15mm, dy=15mm

Maximum value of SAR (measured) = 0.251 W/kg

**LHS/Tilt\_GSM Voice\_ch 661/Zoom Scan (5x5x7)/Cube 0:** Measurement grid: dx=8mm, dy=8mm,

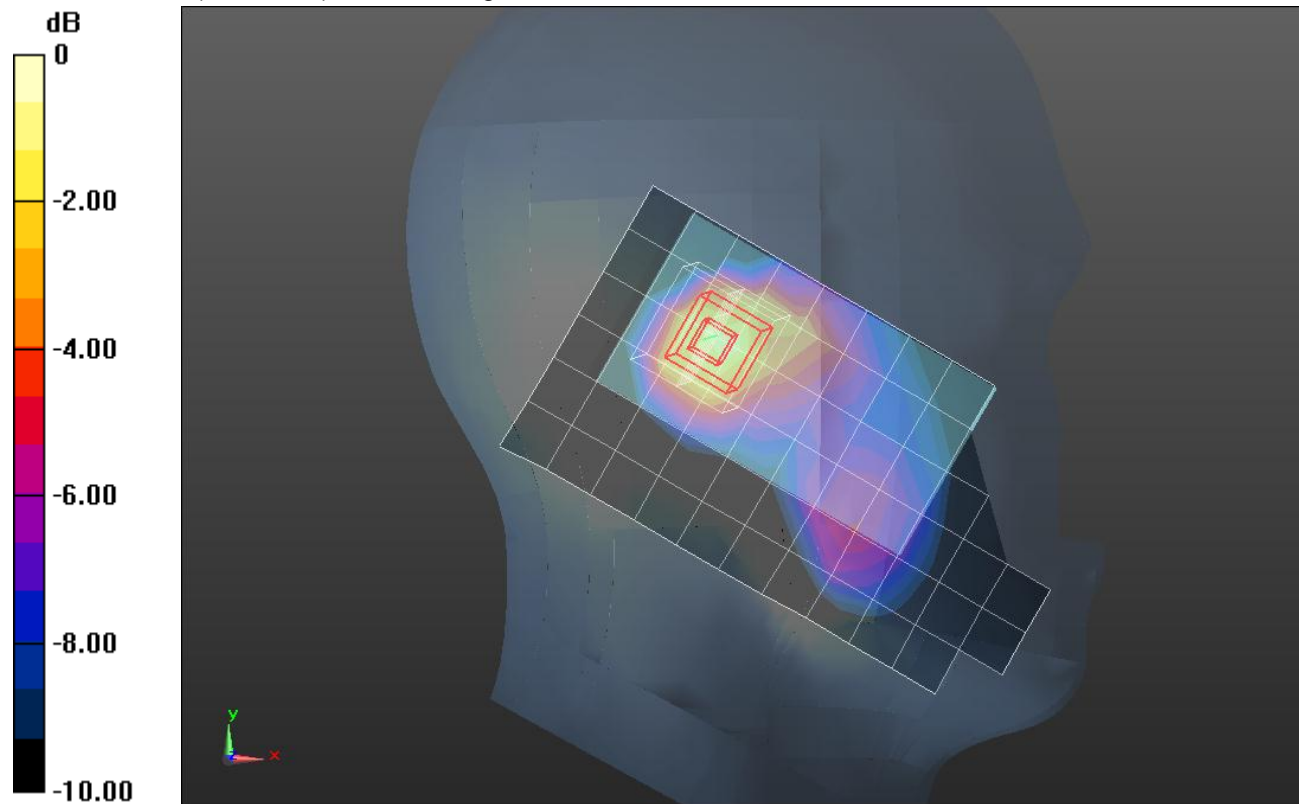
dz=5mm

Reference Value = 13.230 V/m; Power Drift = 0.06 dB

Peak SAR (extrapolated) = 0.397 W/kg

**SAR(1 g) = 0.242 W/kg; SAR(10 g) = 0.137 W/kg**

Maximum value of SAR (measured) = 0.304 W/kg



0 dB = 0.304 W/kg = -5.17 dBW/kg

## GSM1900

Frequency: 1880 MHz; Duty Cycle: 1:8; Room Ambient Temperature: 24.0°C; Liquid Temperature: 23.0°C  
Medium parameters used:  $f = 1880$  MHz;  $\sigma = 1.394$  mho/m;  $\epsilon_r = 38.889$ ;  $\rho = 1000$  kg/m<sup>3</sup>

DASY5 Configuration:

- Area Scan Setting: Find Secondary Maximum Within: 2.0 dB and with a peak SAR value greater than 0.0012W/kg
- Electronics: DAE4 Sn1343; Calibrated: 8/20/2012
- Probe: EX3DV4 - SN3871; ConvF(8.26, 8.26, 8.26); Calibrated: 8/20/2012;
- Sensor-Surface: 2.5mm (Mechanical Surface Detection)
- Phantom: SAM with CRP; Type: SAM;

**RHS/Touch\_GSM Voice\_ch 661/Area Scan (13x7x1):** Measurement grid: dx=15mm, dy=15mm  
Maximum value of SAR (measured) = 0.431 W/kg

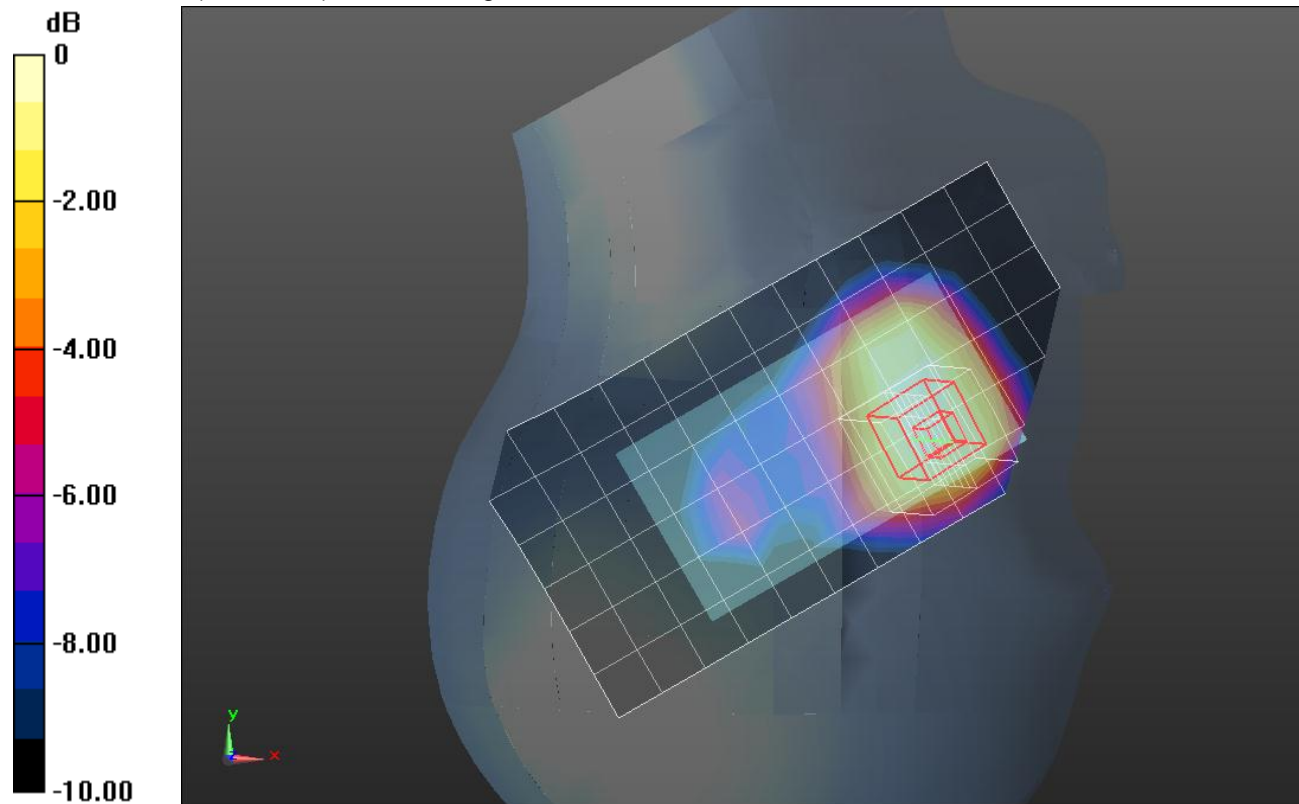
**RHS/Touch\_GSM Voice\_ch 661/Zoom Scan (5x5x7)/Cube 0:** Measurement grid: dx=8mm, dy=8mm, dz=5mm

Reference Value = 18.106 V/m; Power Drift = -0.08 dB

Peak SAR (extrapolated) = 0.580 W/kg

**SAR(1 g) = 0.378 W/kg; SAR(10 g) = 0.242 W/kg**

Maximum value of SAR (measured) = 0.457 W/kg



0 dB = 0.457 W/kg = -3.40 dBW/kg

## GSM1900

Frequency: 1880 MHz; Duty Cycle: 1:8; Room Ambient Temperature: 24.0°C; Liquid Temperature: 23.0°C

Medium parameters used:  $f = 1880$  MHz;  $\sigma = 1.394$  mho/m;  $\epsilon_r = 38.889$ ;  $\rho = 1000$  kg/m<sup>3</sup>

DASY5 Configuration:

- Area Scan Setting: Find Secondary Maximum Within: 2.0 dB and with a peak SAR value greater than 0.0012W/kg
- Electronics: DAE4 Sn1343; Calibrated: 8/20/2012
- Probe: EX3DV4 - SN3871; ConvF(8.26, 8.26, 8.26); Calibrated: 8/20/2012;
- Sensor-Surface: 2.5mm (Mechanical Surface Detection)
- Phantom: SAM with CRP; Type: SAM;

**RHS/Tilt\_GSM Voice\_ch 661/Area Scan (7x13x1):** Measurement grid: dx=15mm, dy=15mm

Maximum value of SAR (measured) = 0.309 W/kg

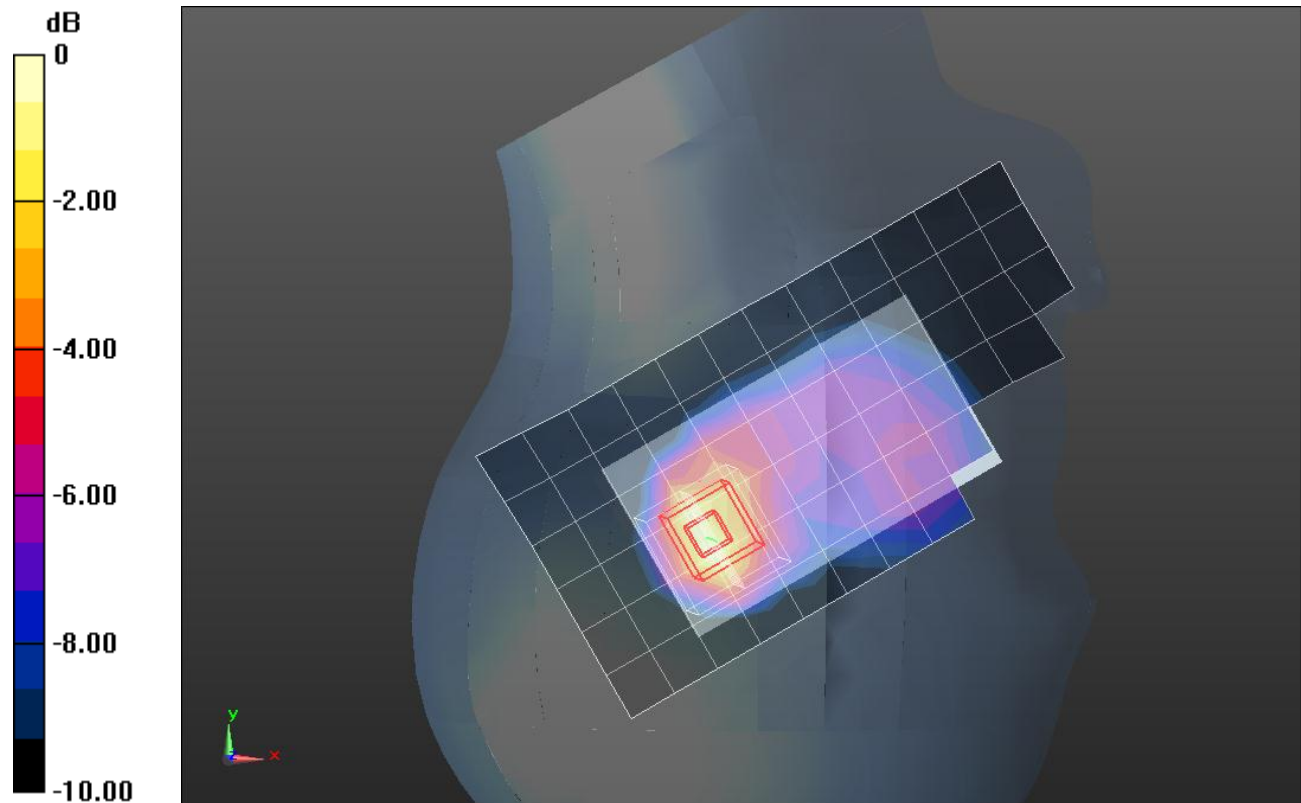
**RHS/Tilt\_GSM Voice\_ch 661/Zoom Scan (5x5x7)/Cube 0:** Measurement grid: dx=8mm, dy=8mm, dz=5mm

Reference Value = 15.126 V/m; Power Drift = -0.01 dB

Peak SAR (extrapolated) = 0.435 W/kg

**SAR(1 g) = 0.262 W/kg; SAR(10 g) = 0.144 W/kg**

Maximum value of SAR (measured) = 0.342 W/kg



0 dB = 0.342 W/kg = -4.66 dBW/kg

## GSM1900

Frequency: 1880 MHz; Duty Cycle: 1:8.00018; Room Ambient Temperature: 24.0°C; Liquid Temperature: 23.0°C

Medium parameters used:  $f = 1880$  MHz;  $\sigma = 1.502$  mho/m;  $\epsilon_r = 51.05$ ;  $\rho = 1000$  kg/m<sup>3</sup>

DASY5 Configuration:

- Area Scan Setting: Find Secondary Maximum Within: 2.0 dB and with a peak SAR value greater than 0.0012W/kg
- Electronics: DAE4 Sn1343; Calibrated: 8/20/2012
- Probe: EX3DV4 - SN3871; ConvF(7.83, 7.83, 7.83); Calibrated: 8/20/2012;
- Sensor-Surface: 2.5mm (Mechanical Surface Detection (Locations From Previous Scan Used)), Sensor-Surface: 2.5mm (Mechanical Surface Detection)
- Phantom: ELI v5.0 A; Type: QDOVA002AA; Serial: 1180

**Rear/GSM Voice\_ch 661/Area Scan (7x12x1):** Measurement grid: dx=15mm, dy=15mm

Maximum value of SAR (measured) = 0.575 W/kg

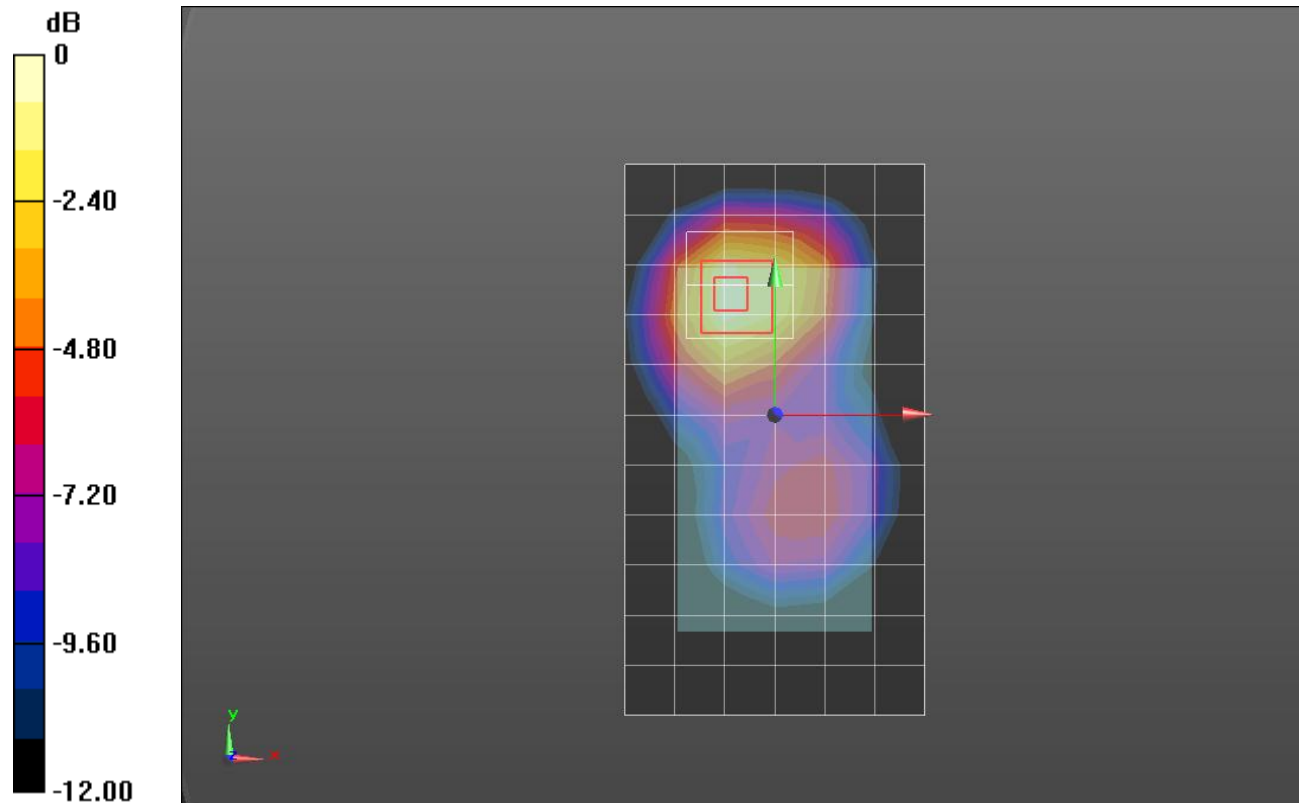
**Rear/GSM Voice\_ch 661/Zoom Scan (5x5x7)/Cube 0:** Measurement grid: dx=8mm, dy=8mm, dz=5mm

Reference Value = 19.720 V/m; Power Drift = -0.06 dB

Peak SAR (extrapolated) = 0.843 W/kg

**SAR(1 g) = 0.503 W/kg; SAR(10 g) = 0.290 W/kg**

Maximum value of SAR (measured) = 0.626 W/kg



0 dB = 0.626 W/kg = -2.03 dBW/kg

## GSM1900

Frequency: 1880 MHz; Duty Cycle: 1:8; Room Ambient Temperature: 24.0°C; Liquid Temperature: 23.0°C

Medium parameters used:  $f = 1880$  MHz;  $\sigma = 1.502$  mho/m;  $\epsilon_r = 51.05$ ;  $\rho = 1000$  kg/m<sup>3</sup>

DASY5 Configuration:

- Area Scan Setting: Find Secondary Maximum Within: 2.0 dB and with a peak SAR value greater than 0.0012W/kg
- Electronics: DAE4 Sn1343; Calibrated: 8/20/2012
- Probe: EX3DV4 - SN3871; ConvF(7.83, 7.83, 7.83); Calibrated: 8/20/2012;
- Sensor-Surface: 2.5mm (Mechanical Surface Detection)
- Phantom: ELI v5.0 A; Type: QDOVA002AA; Serial: 1180

**Front/GSM Voice\_ch 661/Area Scan (7x12x1):** Measurement grid: dx=15mm, dy=15mm

Maximum value of SAR (measured) = 0.409 W/kg

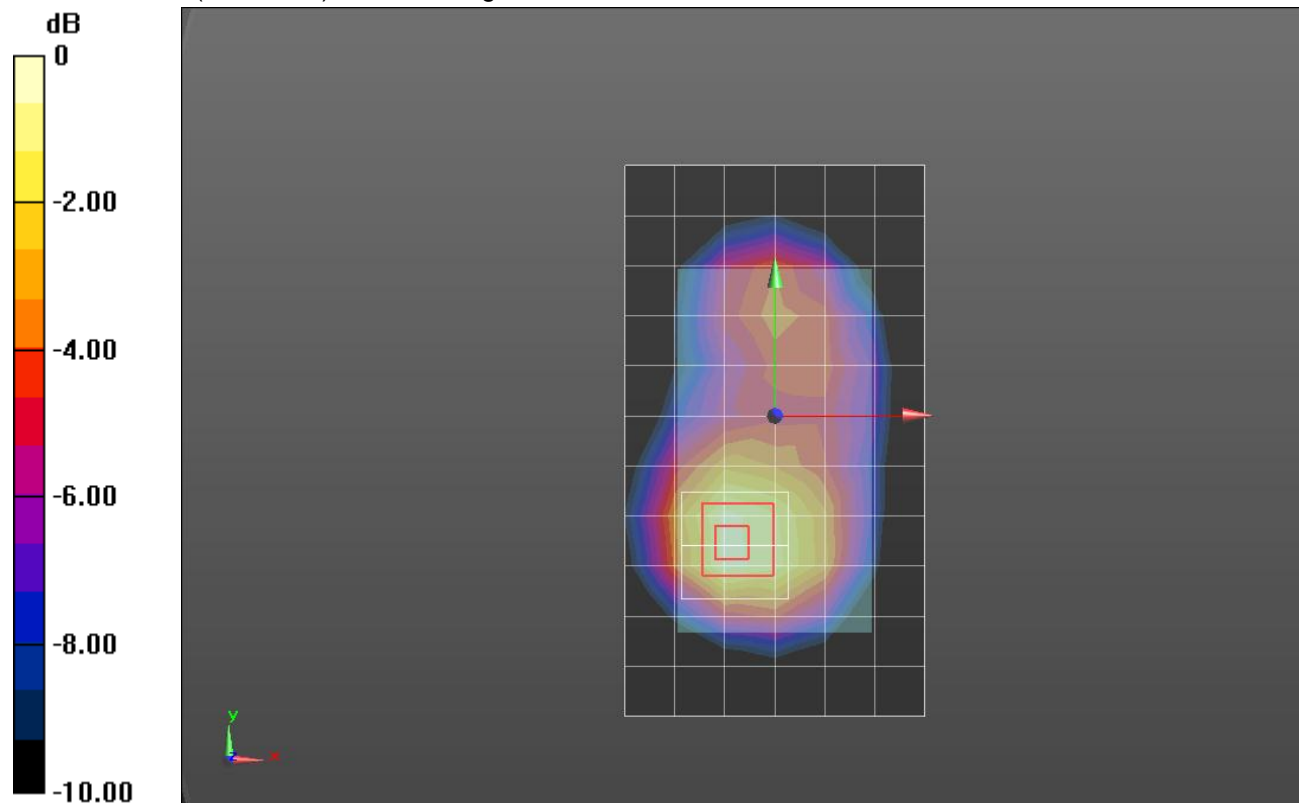
**Front/GSM Voice\_ch 661/Zoom Scan (5x5x7)/Cube 0:** Measurement grid: dx=8mm, dy=8mm, dz=5mm

Reference Value = 16.681 V/m; Power Drift = -0.01 dB

Peak SAR (extrapolated) = 0.572 W/kg

**SAR(1 g) = 0.358 W/kg; SAR(10 g) = 0.218 W/kg**

Maximum value of SAR (measured) = 0.445 W/kg



0 dB = 0.445 W/kg = -3.52 dBW/kg

## GSM1900

Frequency: 1850.2 MHz; Duty Cycle: 1:4; Room Ambient Temperature: 24.0°C; Liquid Temperature: 23.0°C  
Medium parameters used (interpolated):  $f = 1850.2$  MHz;  $\sigma = 1.47$  mho/m;  $\epsilon_r = 51.224$ ;  $\rho = 1000$  kg/m<sup>3</sup>

DASY5 Configuration:

- Area Scan Setting: Find Secondary Maximum Within: 2.0 dB and with a peak SAR value greater than 0.0012W/kg
- Electronics: DAE4 Sn1343; Calibrated: 8/20/2012
- Probe: EX3DV4 - SN3871; ConvF(7.83, 7.83, 7.83); Calibrated: 8/20/2012;
- Sensor-Surface: 2.5mm (Mechanical Surface Detection (Locations From Previous Scan Used)), Sensor-Surface: 2.5mm (Mechanical Surface Detection)
- Phantom: ELI v5.0 A; Type: QDOVA002AA; Serial: 1180

**Rear/GPRS 2slots\_ch 512/Area Scan (7x12x1):** Measurement grid: dx=15mm, dy=15mm

[Info: Interpolated medium parameters used for SAR evaluation.](#)

Maximum value of SAR (measured) = 0.854 W/kg

**Rear/GPRS 2slots\_ch 512/Zoom Scan (5x5x7)/Cube 0:** Measurement grid: dx=8mm, dy=8mm, dz=5mm

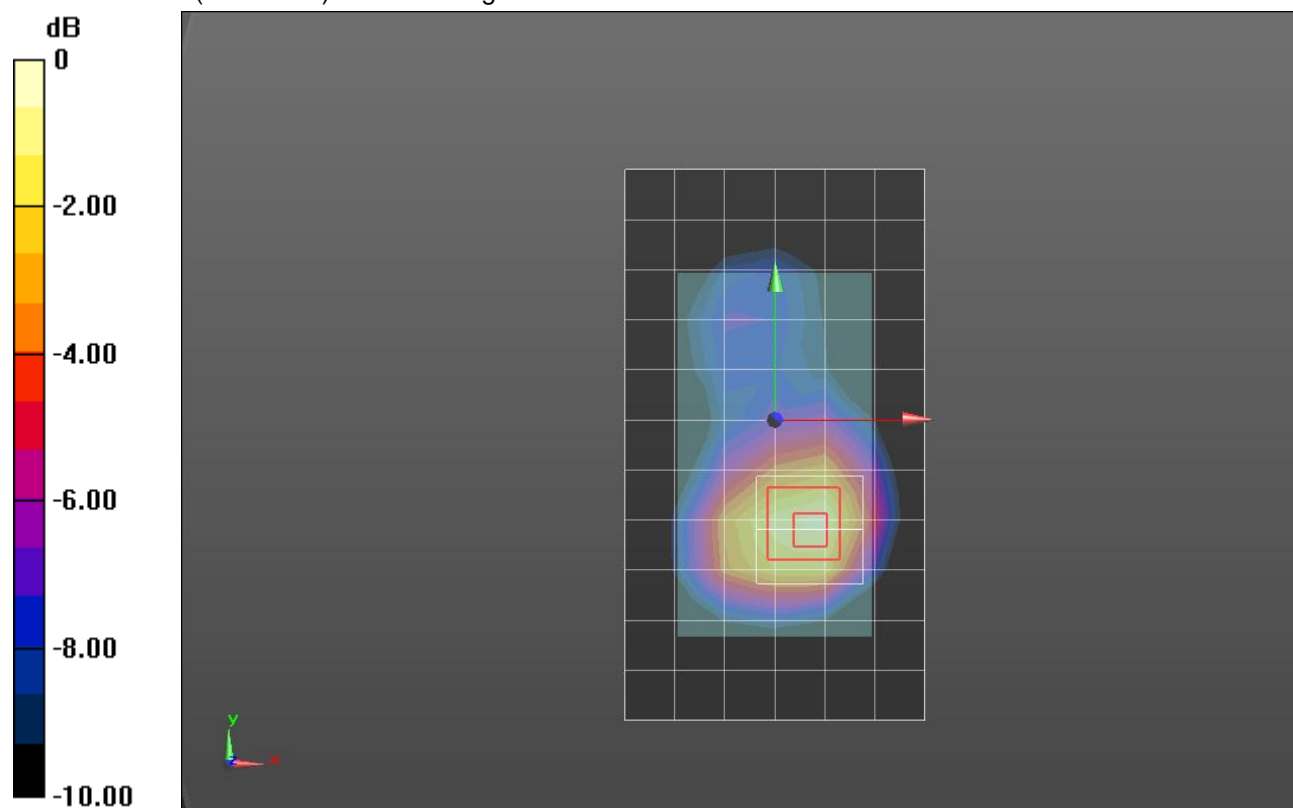
Reference Value = 24.273 V/m; Power Drift = 0.01 dB

Peak SAR (extrapolated) = 1.19 W/kg

**SAR(1 g) = 0.716 W/kg; SAR(10 g) = 0.419 W/kg**

[Info: Interpolated medium parameters used for SAR evaluation.](#)

Maximum value of SAR (measured) = 0.915 W/kg



0 dB = 0.915 W/kg = -0.39 dBW/kg

## GSM1900

Frequency: 1880 MHz; Duty Cycle: 1:4; Room Ambient Temperature: 24.0°C; Liquid Temperature: 23.0°C  
Medium parameters used:  $f = 1880$  MHz;  $\sigma = 1.502$  mho/m;  $\epsilon_r = 51.05$ ;  $\rho = 1000$  kg/m<sup>3</sup>

DASY5 Configuration:

- Area Scan Setting: Find Secondary Maximum Within: 2.0 dB and with a peak SAR value greater than 0.0012W/kg
- Electronics: DAE4 Sn1343; Calibrated: 8/20/2012
- Probe: EX3DV4 - SN3871; ConvF(7.83, 7.83, 7.83); Calibrated: 8/20/2012;
- Sensor-Surface: 2.5mm (Mechanical Surface Detection (Locations From Previous Scan Used)), Sensor-Surface: 2.5mm (Mechanical Surface Detection)
- Phantom: ELI v5.0 A; Type: QDOVA002AA; Serial: 1180

**Rear/GPRS 2slots\_ch 661 2/Area Scan (7x12x1):** Measurement grid: dx=15mm, dy=15mm  
Maximum value of SAR (measured) = 0.886 W/kg

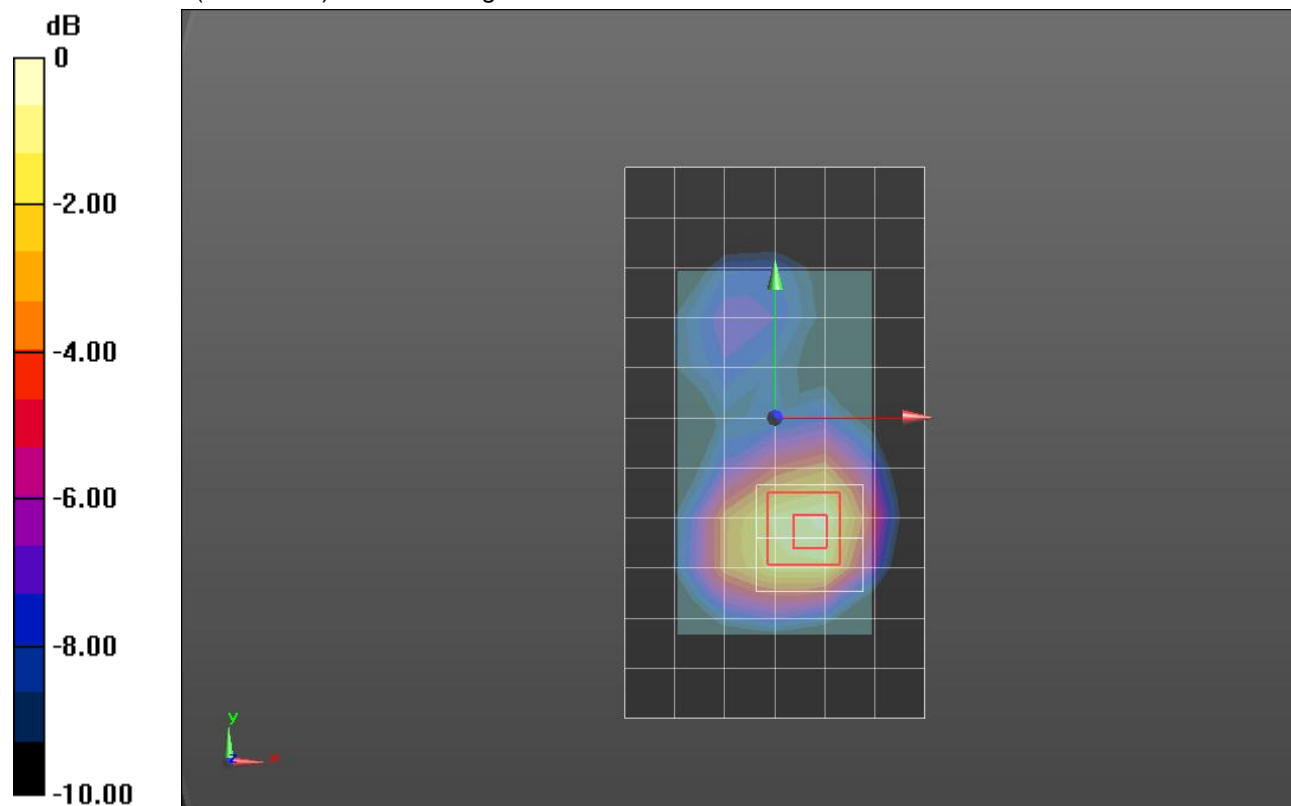
**Rear/GPRS 2slots\_ch 661 2/Zoom Scan (5x5x7)/Cube 0:** Measurement grid: dx=8mm, dy=8mm, dz=5mm

Reference Value = 9.793 V/m; Power Drift = 0.01 dB

Peak SAR (extrapolated) = 1.27 W/kg

**SAR(1 g) = 0.762 W/kg; SAR(10 g) = 0.443 W/kg**

Maximum value of SAR (measured) = 0.977 W/kg



0 dB = 0.977 W/kg = -0.10 dBW/kg

## GSM1900

Frequency: 1909.8 MHz; Duty Cycle: 1:4; Room Ambient Temperature: 24.0°C; Liquid Temperature: 23.0°C  
Medium parameters used:  $f = 1910$  MHz;  $\sigma = 1.536$  mho/m;  $\epsilon_r = 50.911$ ;  $\rho = 1000$  kg/m<sup>3</sup>

DASY5 Configuration:

- Area Scan Setting: Find Secondary Maximum Within: 2.0 dB and with a peak SAR value greater than 0.0012W/kg
- Electronics: DAE4 Sn1343; Calibrated: 8/20/2012
- Probe: EX3DV4 - SN3871; ConvF(7.83, 7.83, 7.83); Calibrated: 8/20/2012;
- Sensor-Surface: 2.5mm (Mechanical Surface Detection (Locations From Previous Scan Used)), Sensor-Surface: 2.5mm (Mechanical Surface Detection)
- Phantom: ELI v5.0 A; Type: QDOVA002AA; Serial: 1180

**Rear/GPRS 2slots\_ch 810/Area Scan (7x12x1):** Measurement grid: dx=15mm, dy=15mm

Maximum value of SAR (measured) = 0.998 W/kg

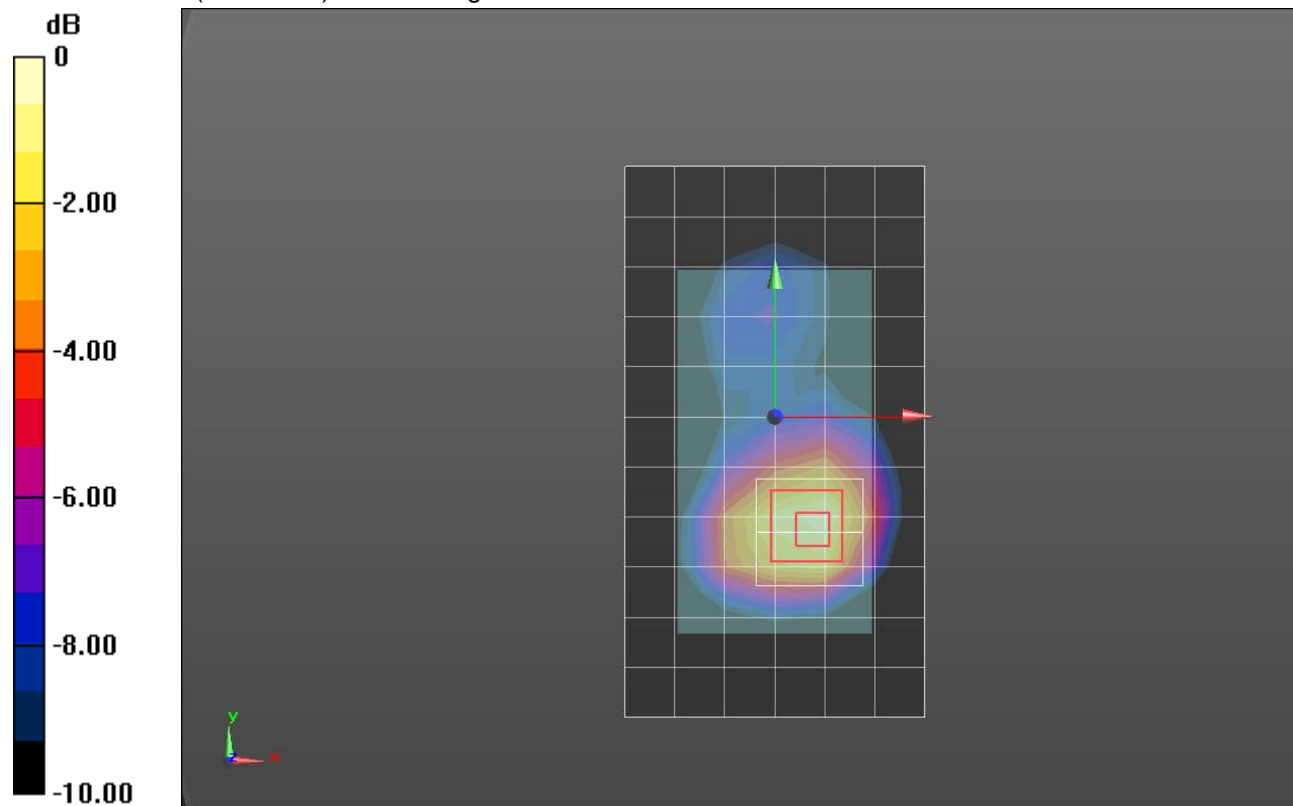
**Rear/GPRS 2slots\_ch 810/Zoom Scan (5x5x7)/Cube 0:** Measurement grid: dx=8mm, dy=8mm, dz=5mm

Reference Value = 25.697 V/m; Power Drift = 0.03 dB

Peak SAR (extrapolated) = 1.39 W/kg

**SAR(1 g) = 0.828 W/kg; SAR(10 g) = 0.482 W/kg**

Maximum value of SAR (measured) = 1.06 W/kg



0 dB = 1.06 W/kg = 0.25 dBW/kg

## GSM1900

Frequency: 1880 MHz; Duty Cycle: 1:4; Room Ambient Temperature: 24.0°C; Liquid Temperature: 23.0°C  
Medium parameters used:  $f = 1880$  MHz;  $\sigma = 1.502$  mho/m;  $\epsilon_r = 51.05$ ;  $\rho = 1000$  kg/m<sup>3</sup>

DASY5 Configuration:

- Area Scan Setting: Find Secondary Maximum Within: 2.0 dB and with a peak SAR value greater than 0.0012W/kg
- Electronics: DAE4 Sn1343; Calibrated: 8/20/2012
- Probe: EX3DV4 - SN3871; ConvF(7.83, 7.83, 7.83); Calibrated: 8/20/2012;
- Sensor-Surface: 2.5mm (Mechanical Surface Detection)
- Phantom: ELI v5.0 A; Type: QDOVA002AA; Serial: 1180

**Front/GPRS 2slots\_ch 661/Area Scan (7x12x1):** Measurement grid: dx=15mm, dy=15mm

Maximum value of SAR (measured) = 0.648 W/kg

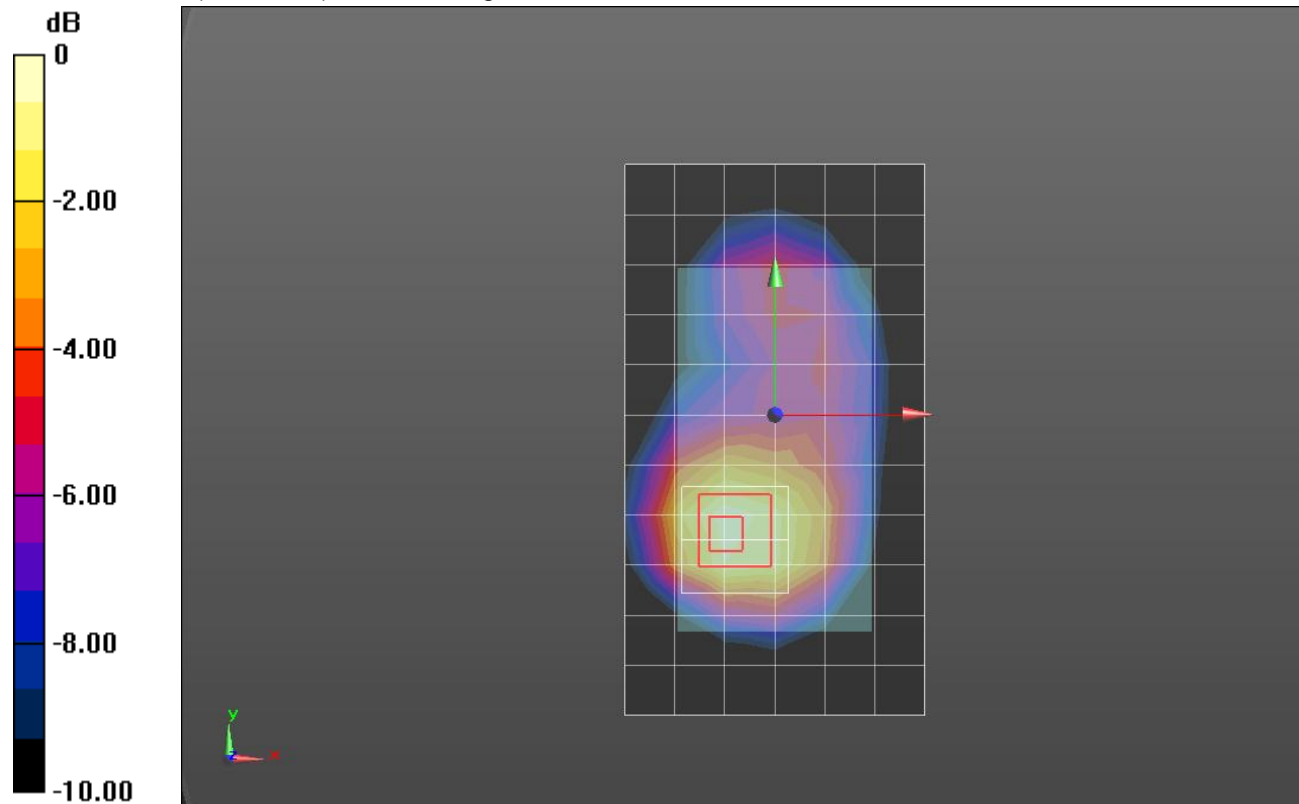
**Front/GPRS 2slots\_ch 661/Zoom Scan (5x5x7)/Cube 0:** Measurement grid: dx=8mm, dy=8mm, dz=5mm

Reference Value = 20.940 V/m; Power Drift = 0.02 dB

Peak SAR (extrapolated) = 0.899 W/kg

**SAR(1 g) = 0.549 W/kg; SAR(10 g) = 0.334 W/kg**

Maximum value of SAR (measured) = 0.672 W/kg



0 dB = 0.672 W/kg = -1.73 dBW/kg

## GSM1900

Frequency: 1880 MHz; Duty Cycle: 1:4; Room Ambient Temperature: 24.0°C; Liquid Temperature: 23.0°C  
Medium parameters used:  $f = 1880$  MHz;  $\sigma = 1.502$  mho/m;  $\epsilon_r = 51.05$ ;  $\rho = 1000$  kg/m<sup>3</sup>

DASY5 Configuration:

- Area Scan Setting: Find Secondary Maximum Within: 2.0 dB and with a peak SAR value greater than 0.0012W/kg
- Electronics: DAE4 Sn1343; Calibrated: 8/20/2012
- Probe: EX3DV4 - SN3871; ConvF(7.83, 7.83, 7.83); Calibrated: 8/20/2012;
- Sensor-Surface: 2.5mm (Mechanical Surface Detection)
- Phantom: ELI v5.0 A; Type: QDOVA002AA; Serial: 1180

**Edge 2/GPRS 2slots\_ch 661/Area Scan (7x12x1):** Measurement grid: dx=15mm, dy=15mm

Maximum value of SAR (measured) = 0.0978 W/kg

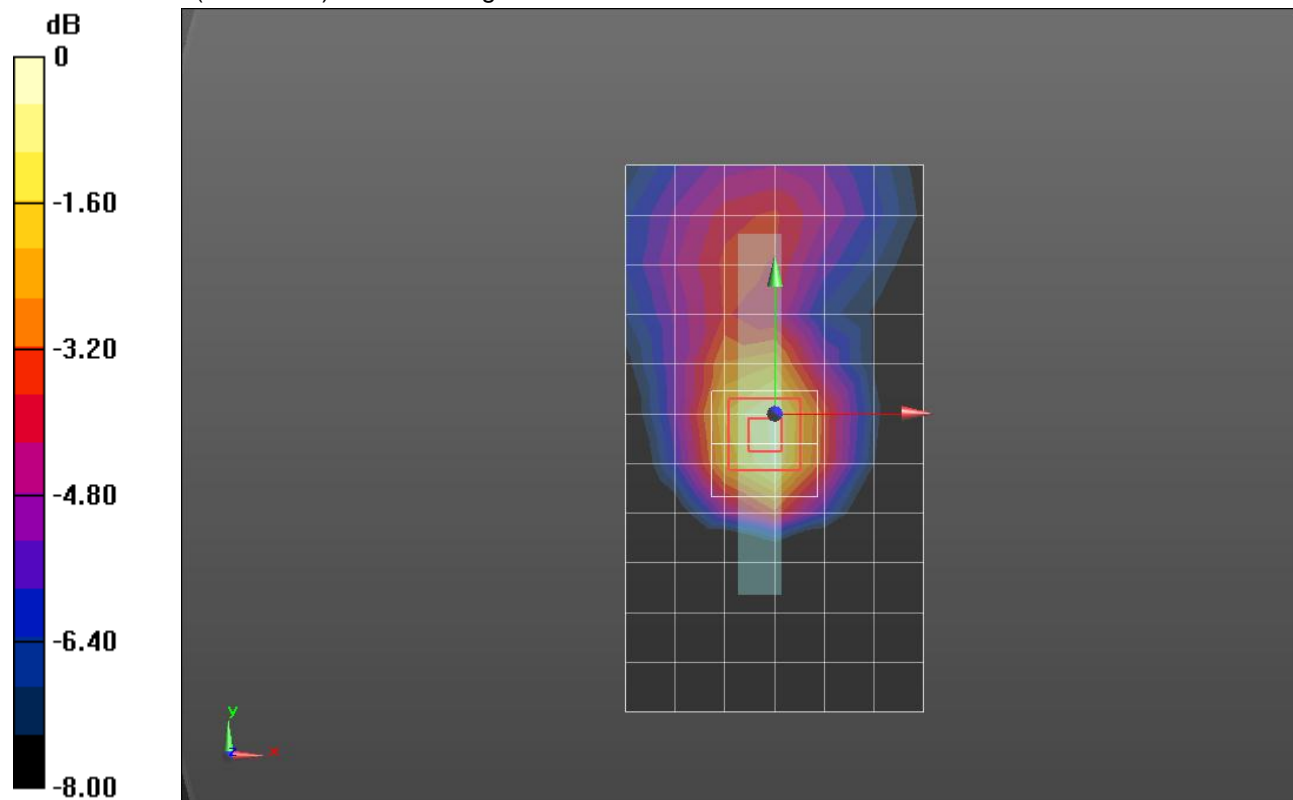
**Edge 2/GPRS 2slots\_ch 661/Zoom Scan (5x5x7)/Cube 0:** Measurement grid: dx=8mm, dy=8mm, dz=5mm

Reference Value = 8.152 V/m; Power Drift = 0.02 dB

Peak SAR (extrapolated) = 0.136 W/kg

**SAR(1 g) = 0.0848 W/kg; SAR(10 g) = 0.0512 W/kg**

Maximum value of SAR (measured) = 0.105 W/kg



0 dB = 0.105 W/kg = -9.79 dBW/kg

## GSM1900

Frequency: 1880 MHz; Duty Cycle: 1:4; Room Ambient Temperature: 24.0°C; Liquid Temperature: 23.0°C

Medium parameters used:  $f = 1880$  MHz;  $\sigma = 1.502$  mho/m;  $\epsilon_r = 51.05$ ;  $\rho = 1000$  kg/m<sup>3</sup>

DASY5 Configuration:

- Area Scan Setting: Find Secondary Maximum Within: 2.0 dB and with a peak SAR value greater than 0.0012W/kg
- Electronics: DAE4 Sn1343; Calibrated: 8/20/2012
- Probe: EX3DV4 - SN3871; ConvF(7.83, 7.83, 7.83); Calibrated: 8/20/2012;
- Sensor-Surface: 2.5mm (Mechanical Surface Detection)
- Phantom: ELI v5.0 A; Type: QDOVA002AA; Serial: 1180

**Edge 3/GPRS 2slots\_ch 661/Area Scan (7x12x1):** Measurement grid: dx=15mm, dy=15mm

Maximum value of SAR (measured) = 0.443 W/kg

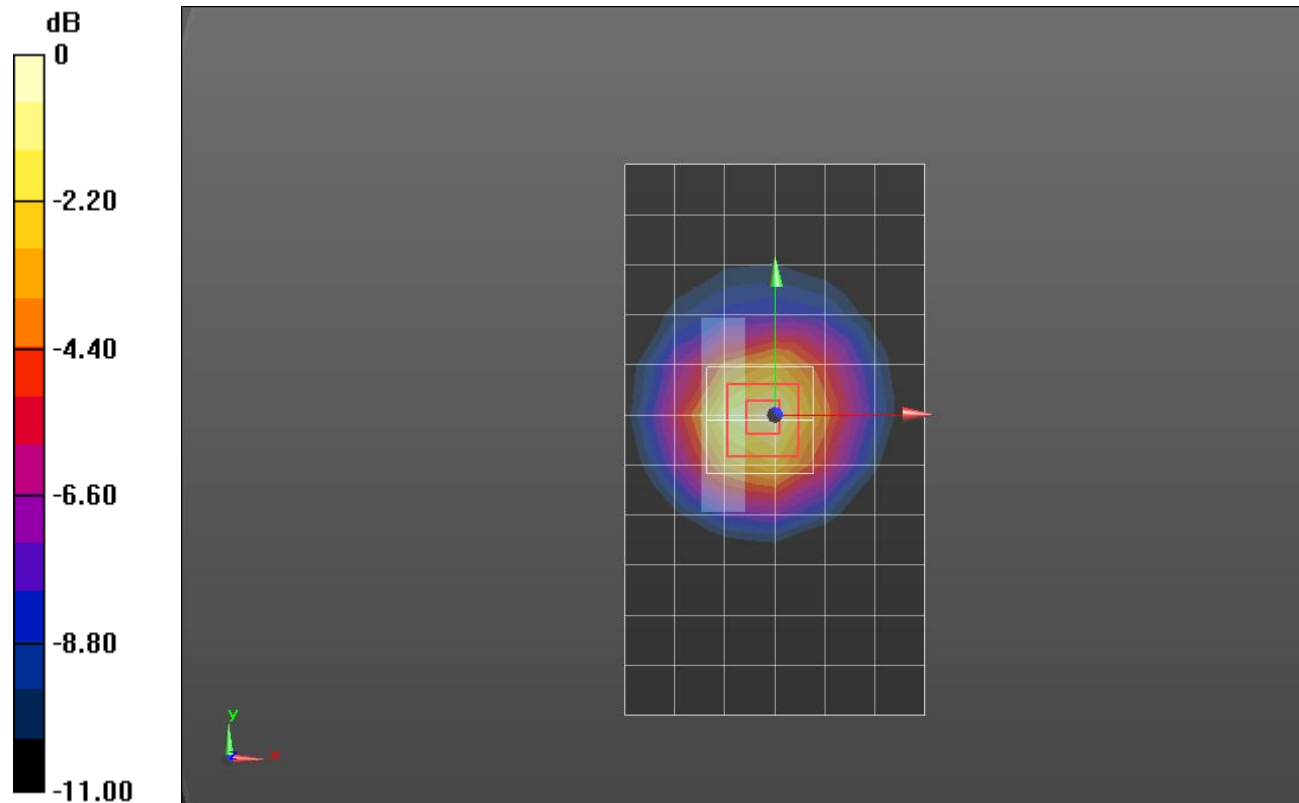
**Edge 3/GPRS 2slots\_ch 661/Zoom Scan (5x5x7)/Cube 0:** Measurement grid: dx=8mm, dy=8mm, dz=5mm

Reference Value = 8.152 V/m; Power Drift = 0.02 dB

Peak SAR (extrapolated) = 0.596 W/kg

**SAR(1 g) = 0.363 W/kg; SAR(10 g) = 0.206 W/kg**

Maximum value of SAR (measured) = 0.461 W/kg



0 dB = 0.461 W/kg = -3.36 dBW/kg

## GSM1900

Frequency: 1880 MHz; Duty Cycle: 1:4; Room Ambient Temperature: 24.0°C; Liquid Temperature: 23.0°C  
Medium parameters used:  $f = 1880$  MHz;  $\sigma = 1.502$  mho/m;  $\epsilon_r = 51.05$ ;  $\rho = 1000$  kg/m<sup>3</sup>

DASY5 Configuration:

- Area Scan Setting: Find Secondary Maximum Within: 2.0 dB and with a peak SAR value greater than 0.0012W/kg
- Averaged Fast SAR: Polynomial fit
- Electronics: DAE4 Sn1343; Calibrated: 8/20/2012
- Probe: EX3DV4 - SN3871; ConvF(7.83, 7.83, 7.83); Calibrated: 8/20/2012;
- Sensor-Surface: 2.5mm (Mechanical Surface Detection)
- Phantom: ELI v5.0 A; Type: QDOVA002AA; Serial: 1180

**Edge 4/GPRS 2slots\_ch 661/Area Scan (7x12x1):** Measurement grid: dx=15mm, dy=15mm

Maximum value of SAR (measured) = 0.201 W/kg

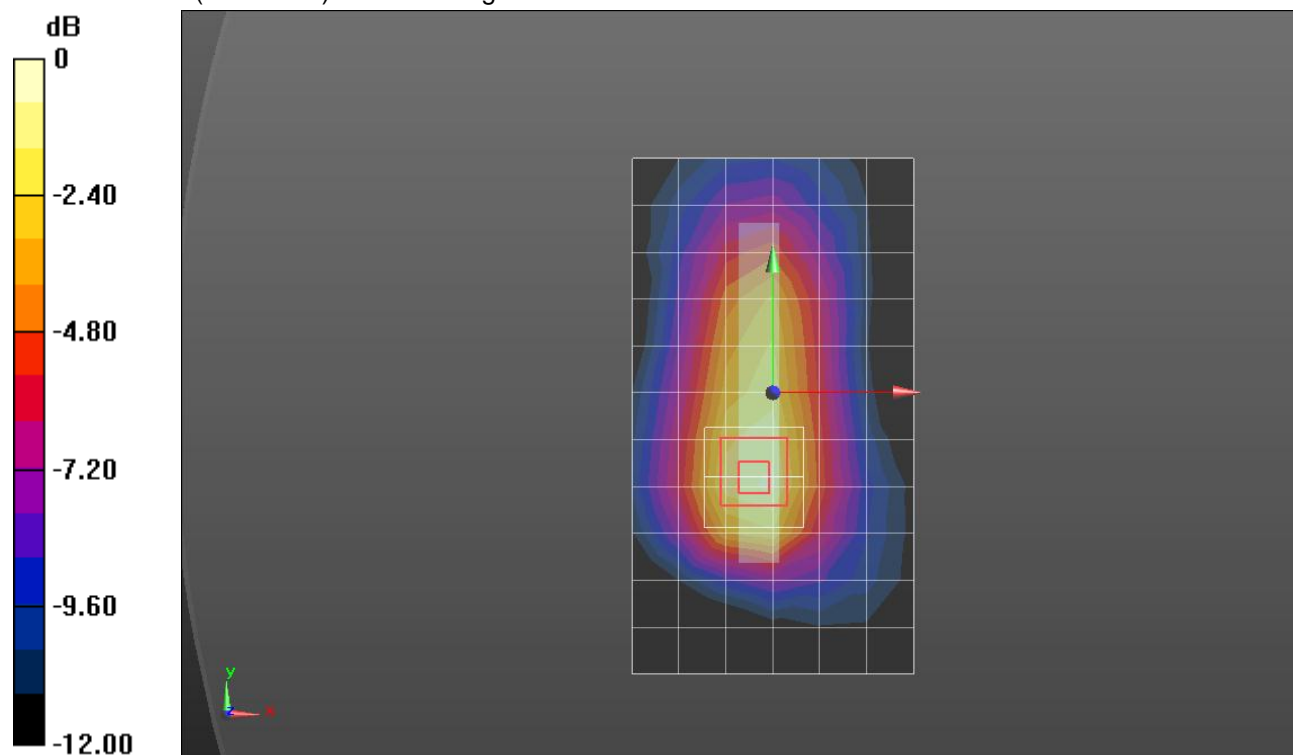
**Edge 4/GPRS 2slots\_ch 661/Zoom Scan (5x5x7)/Cube 0:** Measurement grid: dx=8mm, dy=8mm, dz=5mm

Reference Value = 17.260 V/m; Power Drift = 0.03 dB

Peak SAR (extrapolated) = 0.291 W/kg

**SAR(1 g) = 0.18 W/kg; SAR(10 g) = 0.106 W/kg**

Maximum value of SAR (measured) = 0.229 W/kg



0 dB = 0.229 W/kg = -6.40 dBW/kg