

20130415_SystemPerformanceCheck-D835V2 SN 4d002

Frequency: 835 MHz; Duty Cycle: 1:1; Room Ambient Temperature: 24.0°C; Liquid Temperature: 23.0°C

Medium parameters used: $f = 835$ MHz; $\sigma = 0.926$ S/m; $\epsilon_r = 42.766$; $\rho = 1000$ kg/m³

DASY5 Configuration:

- Area Scan Setting: Find Secondary Maximum Within: 2.0 dB and with a peak SAR value greater than 0.0012W/kg
- Averaged Fast SAR: Polynomial fit
- Electronics: DAE4 Sn1357; Calibrated: 2/5/2013
- Probe: EX3DV4 - SN3901; ConvF(9.98, 9.98, 9.98); Calibrated: 2/13/2013;
- Sensor-Surface: 2.5mm (Mechanical Surface Detection)
- Phantom: SAM with CRP; Type: SAM;

Head/Pin=100 mW/Area Scan (61x61x1): Interpolated grid: dx=1.500 mm, dy=1.500 mm

Reference Value = 36.677 V/m; Power Drift = 0.12 dB

Fast SAR: SAR(1 g) = 1.07 W/kg; SAR(10 g) = 0.721 W/kg

Maximum value of SAR (interpolated) = 1.27 W/kg

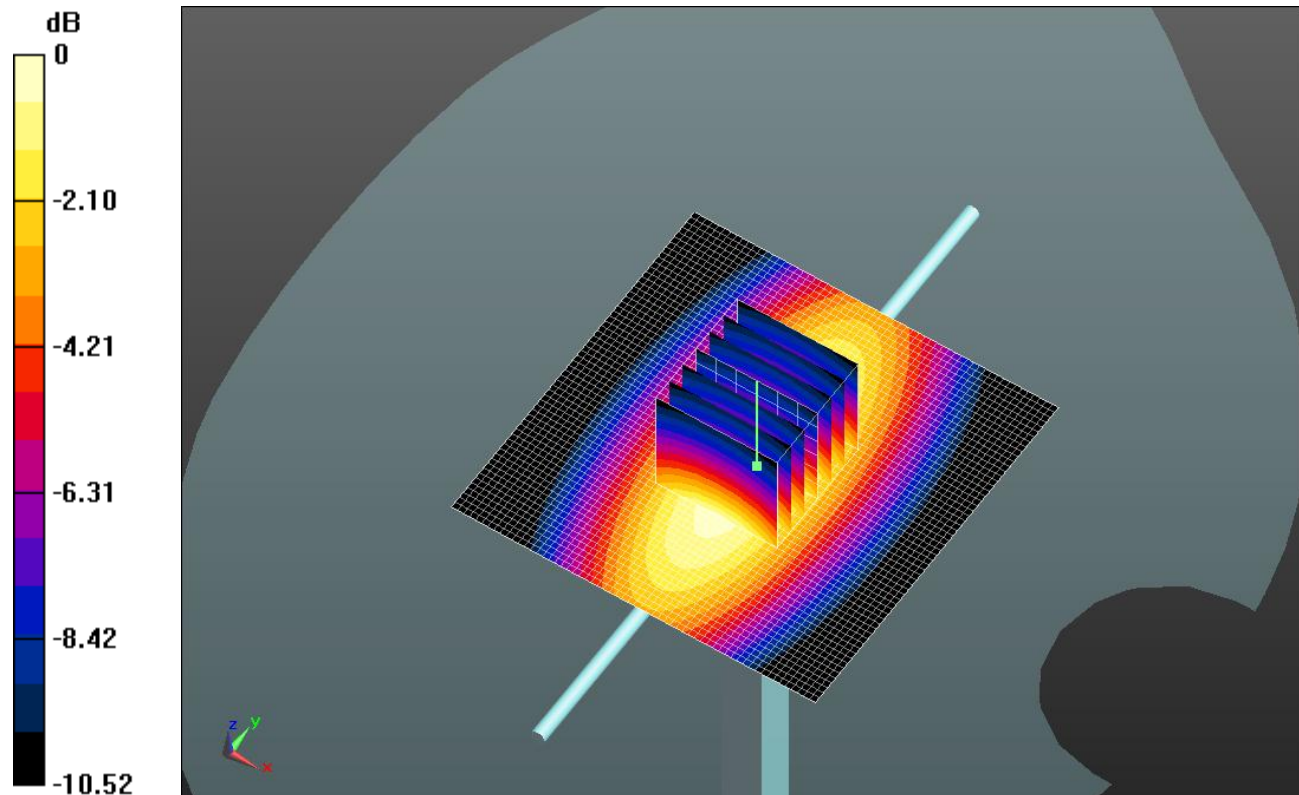
Head/Pin=100 mW/Zoom Scan (7x7x7)/Cube 0: Measurement grid: dx=5mm, dy=5mm, dz=5mm

Reference Value = 36.677 V/m; Power Drift = 0.12 dB

Peak SAR (extrapolated) = 1.61 W/kg

SAR(1 g) = 1.05 W/kg; SAR(10 g) = 0.685 W/kg

Maximum value of SAR (measured) = 1.29 W/kg

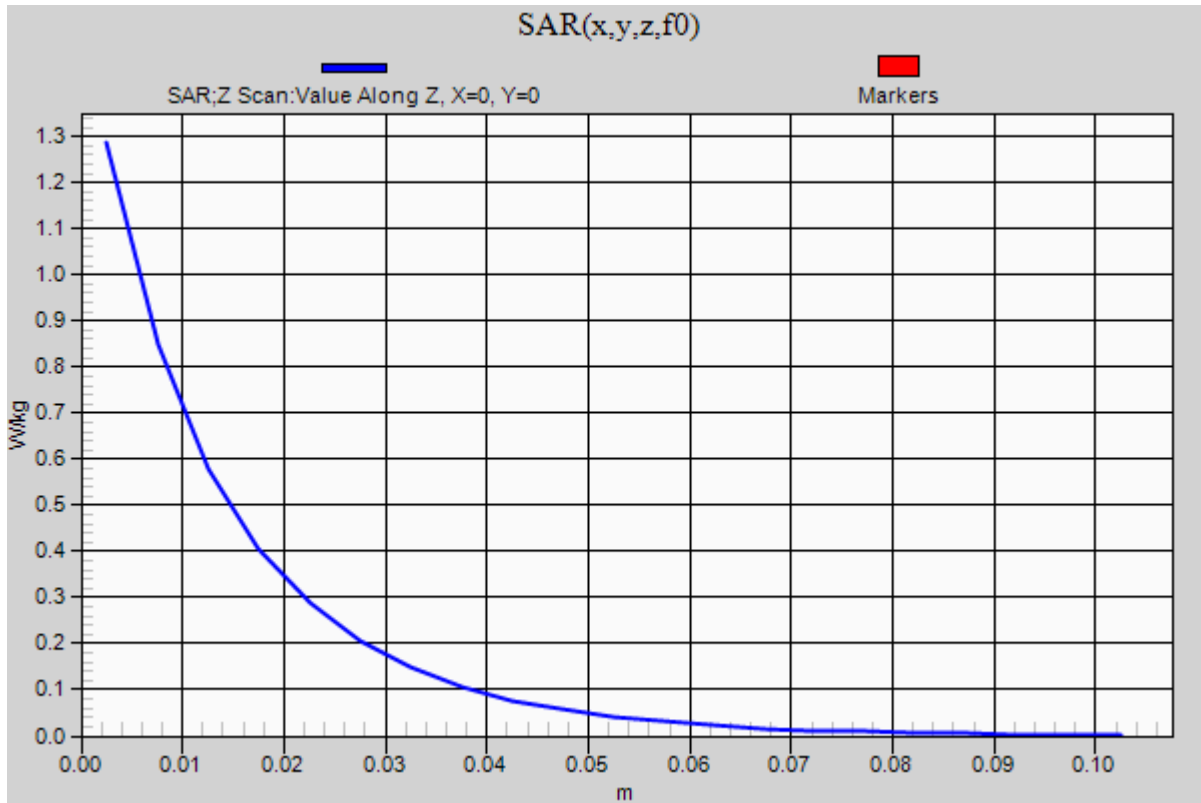


0 dB = 1.29 W/kg = 1.11 dBW/kg

20130415_SystemPerformanceCheck-D835V2 SN 4d002

Frequency: 835 MHz; Duty Cycle: 1:1

Head/Pin=100 mW/Z Scan (1x1x21): Measurement grid: dx=20mm, dy=20mm, dz=5mm
Maximum value of SAR (measured) = 1.29 W/kg



20130416_SystemPerformanceCheck-D1900V2 SN 5d043

Frequency: 1900 MHz; Duty Cycle: 1:1; Room Ambient Temperature: 24.0°C; Liquid Temperature: 23.0°C

Medium parameters used: $f = 1900$ MHz; $\sigma = 1.418$ S/m; $\epsilon_r = 38.888$; $\rho = 1000$ kg/m³

DASY5 Configuration:

- Area Scan Setting: Find Secondary Maximum Within: 2.0 dB and with a peak SAR value greater than 0.0012W/kg
- Averaged Fast SAR: Polynomial fit
- Electronics: DAE4 Sn1352; Calibrated: 10/8/2012
- Probe: EX3DV4 - SN3885; ConvF(7.66, 7.66, 7.66); Calibrated: 10/9/2012;
- Sensor-Surface: 2.5mm (Mechanical Surface Detection)
- Phantom: SAM with CRP; Type: SAM;

Head/Pin=100 mW/Area Scan (61x61x1): Interpolated grid: dx=1.500 mm, dy=1.500 mm

Reference Value = 63.787 V/m; Power Drift = 0.07 dB

Fast SAR: SAR(1 g) = 4.47 W/kg; SAR(10 g) = 2.29 W/kg

Maximum value of SAR (interpolated) = 6.01 W/kg

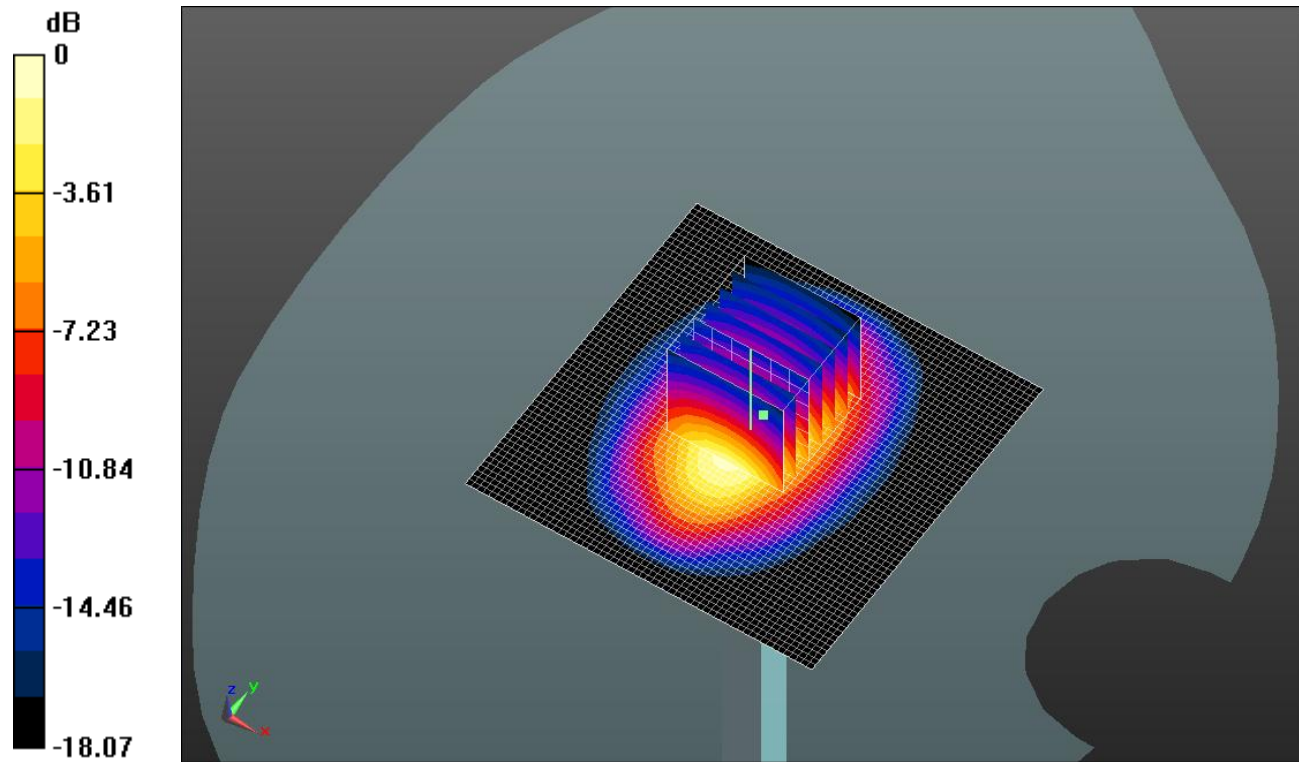
Head/Pin=100 mW/Zoom Scan (7x7x7)/Cube 0: Measurement grid: dx=5mm, dy=5mm, dz=5mm

Reference Value = 63.787 V/m; Power Drift = 0.07 dB

Peak SAR (extrapolated) = 8.18 W/kg

SAR(1 g) = 4.36 W/kg; SAR(10 g) = 2.27 W/kg

Maximum value of SAR (measured) = 5.91 W/kg

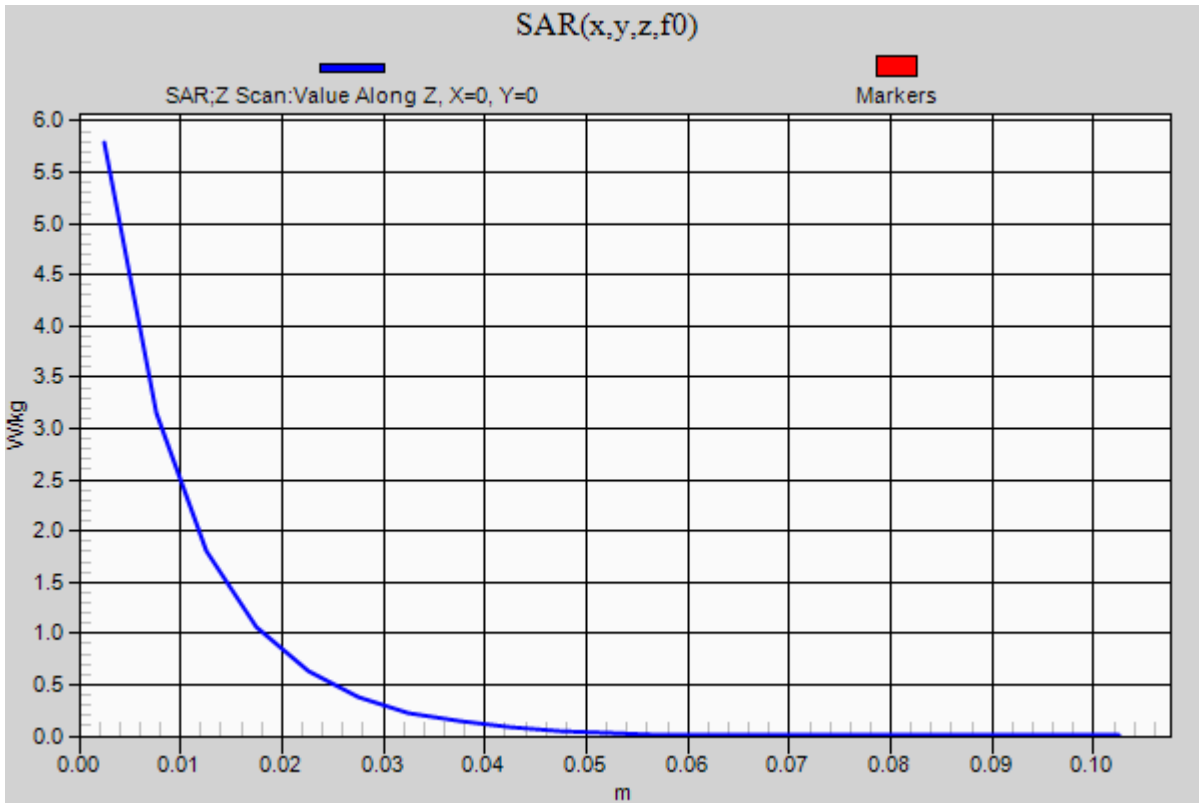


0 dB = 5.91 W/kg = 7.72 dBW/kg

20130416_SystemPerformanceCheck-D1900V2 SN 5d043

Frequency: 1900 MHz; Duty Cycle: 1:1

Head/Pin=100 mW/Z Scan (1x1x21): Measurement grid: dx=20mm, dy=20mm, dz=5mm
Maximum value of SAR (measured) = 5.79 W/kg



20130422_SystemPerformanceCheck-D2450V2 SN 899

Frequency: 2450 MHz; Duty Cycle: 1:1; Room Ambient Temperature: 24.0°C; Liquid Temperature: 23.0°C

Medium parameters used: $f = 2450$ MHz; $\sigma = 2.027$ S/m; $\epsilon_r = 53.414$; $\rho = 1000$ kg/m³

DASY5 Configuration:

- Area Scan Setting: Find Secondary Maximum Within: 2.0 dB and with a peak SAR value greater than 0.0012W/kg
- Averaged Fast SAR: Polynomial fit
- Electronics: DAE4 Sn1352; Calibrated: 10/8/2012
- Probe: EX3DV4 - SN3885; ConvF(6.8, 6.8, 6.8); Calibrated: 10/9/2012;
- Sensor-Surface: 2.5mm (Mechanical Surface Detection)
- Phantom: ELI v5.0 (B); Type: QDOVA001BB; Serial: 1185

Body/Pin=100 mW/Area Scan (71x71x1): Interpolated grid: dx=1.200 mm, dy=1.200 mm

Reference Value = 61.613 V/m; Power Drift = 0.02 dB

Fast SAR: SAR(1 g) = 5.52 W/kg; SAR(10 g) = 2.38 W/kg

Maximum value of SAR (interpolated) = 8.11 W/kg

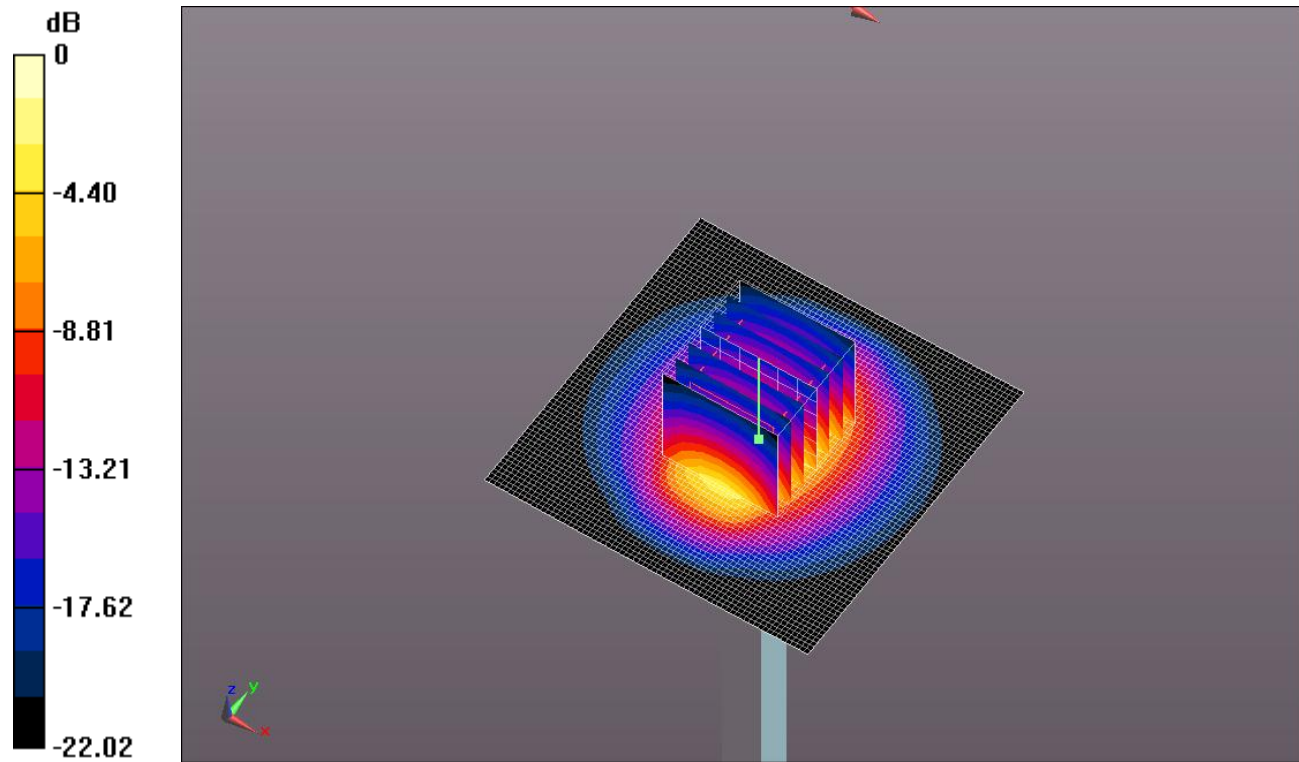
Body/Pin=100 mW/Zoom Scan (7x7x7)/Cube 0: Measurement grid: dx=5mm, dy=5mm, dz=5mm

Reference Value = 61.613 V/m; Power Drift = 0.02 dB

Peak SAR (extrapolated) = 11.7 W/kg

SAR(1 g) = 5.52 W/kg; SAR(10 g) = 2.54 W/kg

Maximum value of SAR (measured) = 7.90 W/kg



0 dB = 7.90 W/kg = 8.98 dBW/kg

20130422_SystemPerformanceCheck-D2450V2 SN 899

Frequency: 2450 MHz; Duty Cycle: 1:1

Body/Pin=100 mW/Z Scan (1x1x21): Measurement grid: dx=20mm, dy=20mm, dz=5mm
Maximum value of SAR (measured) = 7.76 W/kg

