

WCDMA Band V

Frequency: 836.4 MHz; Duty Cycle: 1:1; Room Ambient Temperature: 24.0°C; Liquid Temperature: 23.0°C

Medium parameters used (interpolated): $f = 836.4$ MHz; $\sigma = 0.896$ mho/m; $\epsilon_r = 41.915$; $\rho = 1000$ kg/m³

DASY5 Configuration:

- Area Scan setting - Find Secondary Maximum Within: 2.0 dB and with a peak SAR value greater than 0.0012W/kg
- Electronics: DAE4 Sn1259; Calibrated: 2/13/2012
- Probe: EX3DV4 - SN3686; ConvF(8.61, 8.61, 8.61); Calibrated: 2/16/2012
- Sensor-Surface: 2.5mm (Mechanical Surface Detection)
- Phantom: SAM; Type: QD000P40CD; Serial: 1629

Head/Left Touch/Rel. 99/Ch 4182/Area Scan (7x11x1): Measurement grid: dx=15mm, dy=15mm

[Info: Interpolated medium parameters used for SAR evaluation.](#)

Maximum value of SAR (measured) = 0.561 mW/g

Head/Left Touch/Rel. 99/Ch 4182/Zoom Scan (5x5x7)/Cube 0: Measurement grid: dx=8mm, dy=8mm, dz=5mm

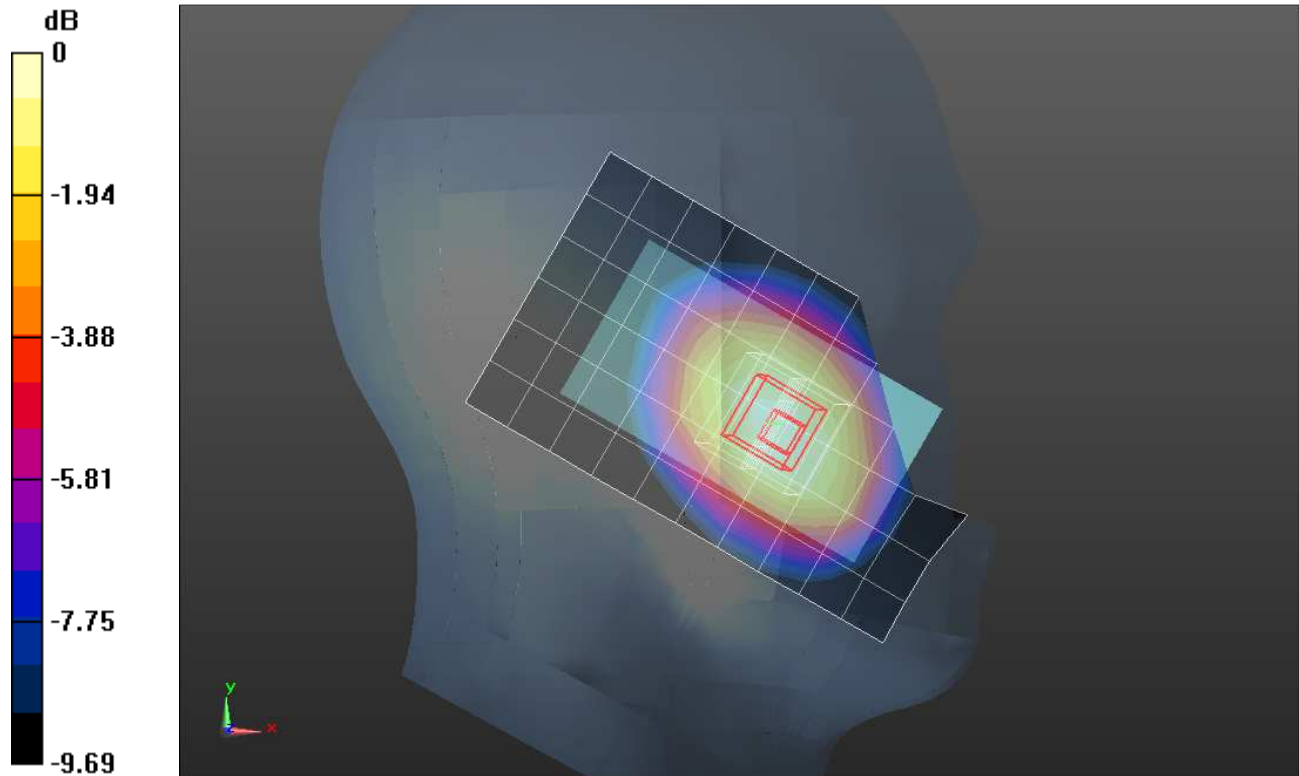
Reference Value = 25.609 V/m; Power Drift = -0.03 dB

Peak SAR (extrapolated) = 0.6600

SAR(1 g) = 0.509 mW/g; SAR(10 g) = 0.372 mW/g

[Info: Interpolated medium parameters used for SAR evaluation.](#)

Maximum value of SAR (measured) = 0.576 mW/g



0 dB = 0.580mW/g = -4.73 dB mW/g

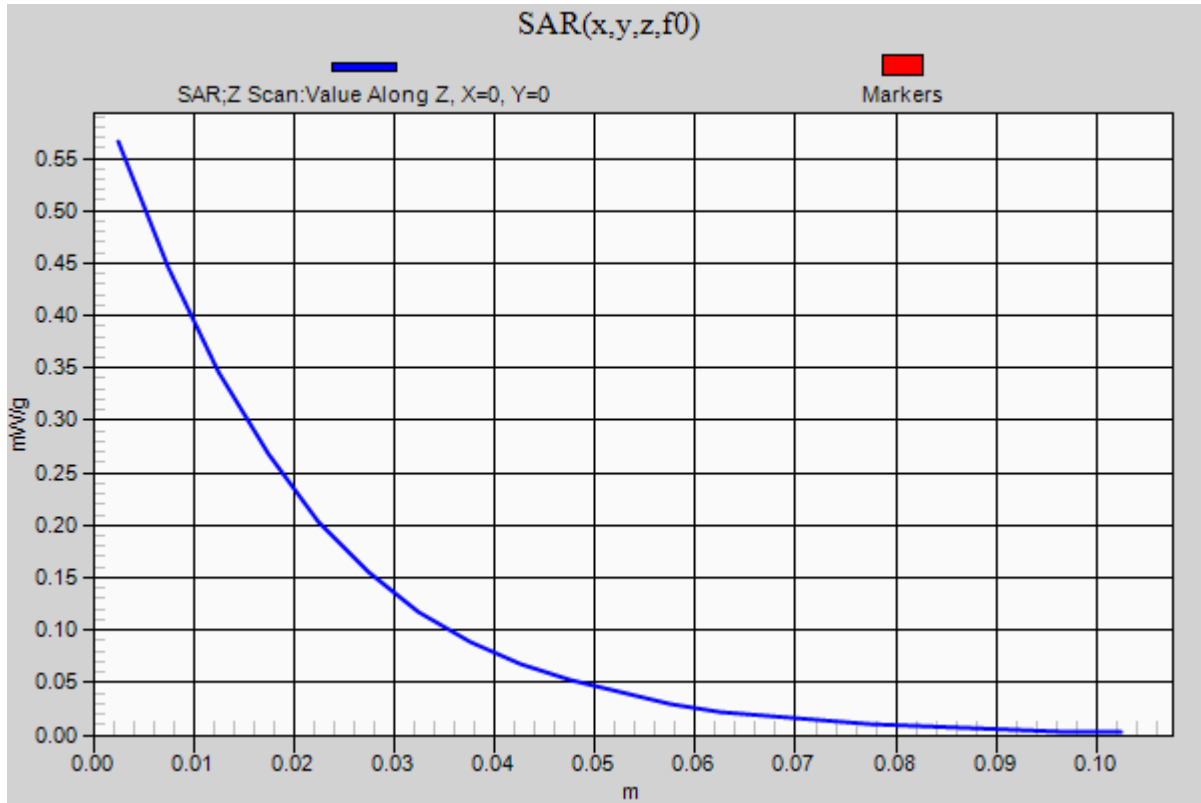
WCDMA Band V

Frequency: 836.4 MHz; Duty Cycle: 1:1

Head/Left Touch/Rel. 99/Ch 4182/Z Scan (1x1x21): Measurement grid: dx=20mm, dy=20mm, dz=5mm

Info: [Interpolated medium parameters used for SAR evaluation.](#)

Maximum value of SAR (measured) = 0.566 mW/g



WCDMA Band V

Frequency: 836.4 MHz; Duty Cycle: 1:1; Room Ambient Temperature: 24.0°C; Liquid Temperature: 23.0°C

Medium parameters used (interpolated): $f = 836.4$ MHz; $\sigma = 0.896$ mho/m; $\epsilon_r = 41.915$; $\rho = 1000$ kg/m³

DASY5 Configuration:

- Area Scan setting - Find Secondary Maximum Within: 2.0 dB and with a peak SAR value greater than 0.0012W/kg
- Electronics: DAE4 Sn1259; Calibrated: 2/13/2012
- Probe: EX3DV4 - SN3686; ConvF(8.61, 8.61, 8.61); Calibrated: 2/16/2012
- Sensor-Surface: 2.5mm (Mechanical Surface Detection)
- Phantom: SAM; Type: QD000P40CD; Serial: 1629

Head/Left Tilt/Rel. 99/Ch 4182/Area Scan (7x11x1): Measurement grid: dx=15mm, dy=15mm

[Info: Interpolated medium parameters used for SAR evaluation.](#)

Maximum value of SAR (measured) = 0.255 mW/g

Head/Left Tilt/Rel. 99/Ch 4182/Zoom Scan (5x5x7)/Cube 0: Measurement grid: dx=8mm, dy=8mm, dz=5mm

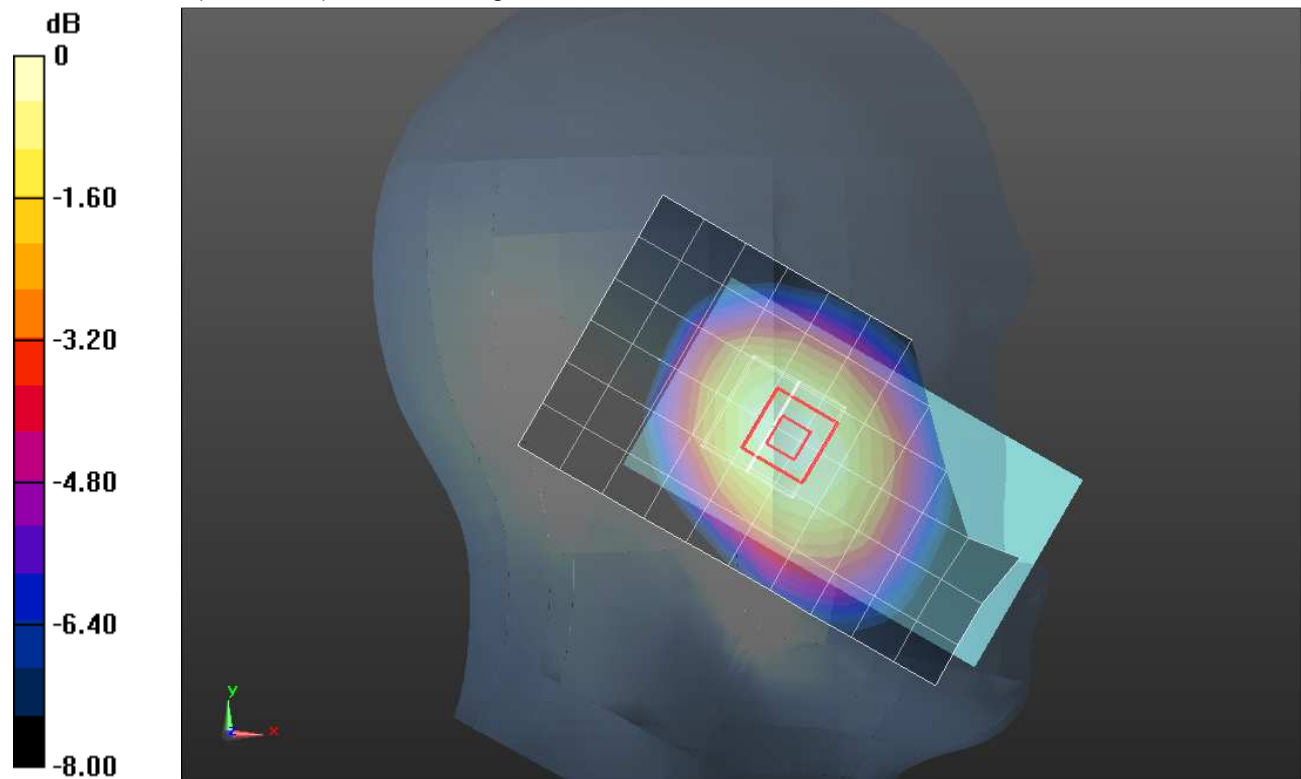
Reference Value = 17.167 V/m; Power Drift = -0.04 dB

Peak SAR (extrapolated) = 0.2850

SAR(1 g) = 0.233 mW/g; SAR(10 g) = 0.178 mW/g

[Info: Interpolated medium parameters used for SAR evaluation.](#)

Maximum value of SAR (measured) = 0.257 mW/g



0 dB = 0.260mW/g = -11.70 dB mW/g

WCDMA Band V

Frequency: 836.4 MHz; Duty Cycle: 1:1; Room Ambient Temperature: 24.0°C; Liquid Temperature: 23.0°C

Medium parameters used (interpolated): $f = 836.4$ MHz; $\sigma = 0.896$ mho/m; $\epsilon_r = 41.915$; $\rho = 1000$ kg/m³

DASY5 Configuration:

- Area Scan setting - Find Secondary Maximum Within: 2.0 dB and with a peak SAR value greater than 0.0012W/kg
- Electronics: DAE4 Sn1259; Calibrated: 2/13/2012
- Probe: EX3DV4 - SN3686; ConvF(8.61, 8.61, 8.61); Calibrated: 2/16/2012
- Sensor-Surface: 2.5mm (Mechanical Surface Detection)
- Phantom: SAM; Type: QD000P40CD; Serial: 1629

Head/Right Touch/Rel. 99/Ch 4182/Area Scan (7x11x1): Measurement grid: dx=15mm, dy=15mm

[Info: Interpolated medium parameters used for SAR evaluation.](#)

Maximum value of SAR (measured) = 0.460 mW/g

Head/Right Touch/Rel. 99/Ch 4182/Zoom Scan (5x5x7)/Cube 0: Measurement grid: dx=8mm, dy=8mm, dz=5mm

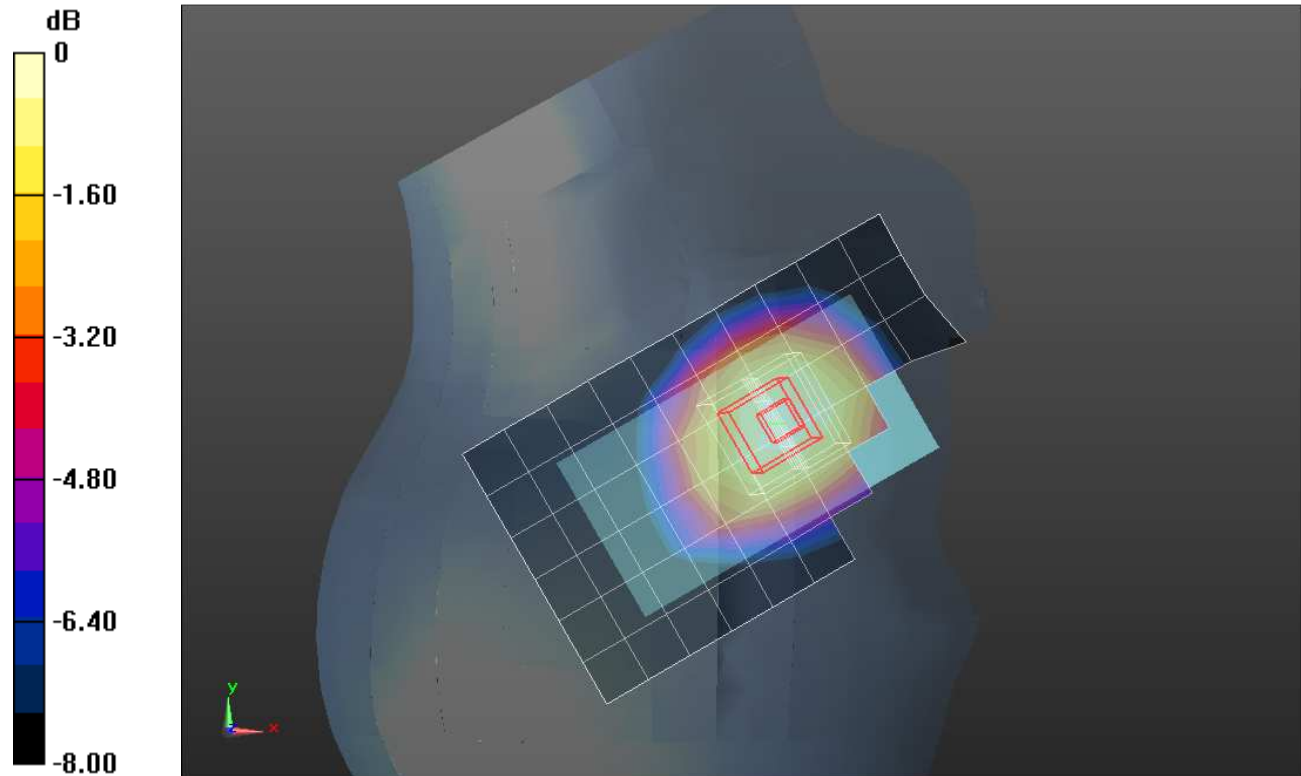
Reference Value = 22.987 V/m; Power Drift = -0.01 dB

Peak SAR (extrapolated) = 0.5090

SAR(1 g) = 0.407 mW/g; SAR(10 g) = 0.305 mW/g

[Info: Interpolated medium parameters used for SAR evaluation.](#)

Maximum value of SAR (measured) = 0.459 mW/g



0 dB = 0.460mW/g = -6.74 dB mW/g

WCDMA Band V

Frequency: 836.4 MHz; Duty Cycle: 1:1; Room Ambient Temperature: 24.0°C; Liquid Temperature: 23.0°C

Medium parameters used (interpolated): $f = 836.4$ MHz; $\sigma = 0.896$ mho/m; $\epsilon_r = 41.915$; $\rho = 1000$ kg/m³

DASY5 Configuration:

- Area Scan setting - Find Secondary Maximum Within: 2.0 dB and with a peak SAR value greater than 0.0012W/kg
- Electronics: DAE4 Sn1259; Calibrated: 2/13/2012
- Probe: EX3DV4 - SN3686; ConvF(8.61, 8.61, 8.61); Calibrated: 2/16/2012
- Sensor-Surface: 2.5mm (Mechanical Surface Detection)
- Phantom: SAM; Type: QD000P40CD; Serial: 1629

Head/Right Tilt/Rel. 99/Ch 4182/Area Scan (7x11x1): Measurement grid: dx=15mm, dy=15mm

[Info: Interpolated medium parameters used for SAR evaluation.](#)

Maximum value of SAR (measured) = 0.238 mW/g

Head/Right Tilt/Rel. 99/Ch 4182/Zoom Scan (5x5x7)/Cube 0: Measurement grid: dx=8mm, dy=8mm, dz=5mm

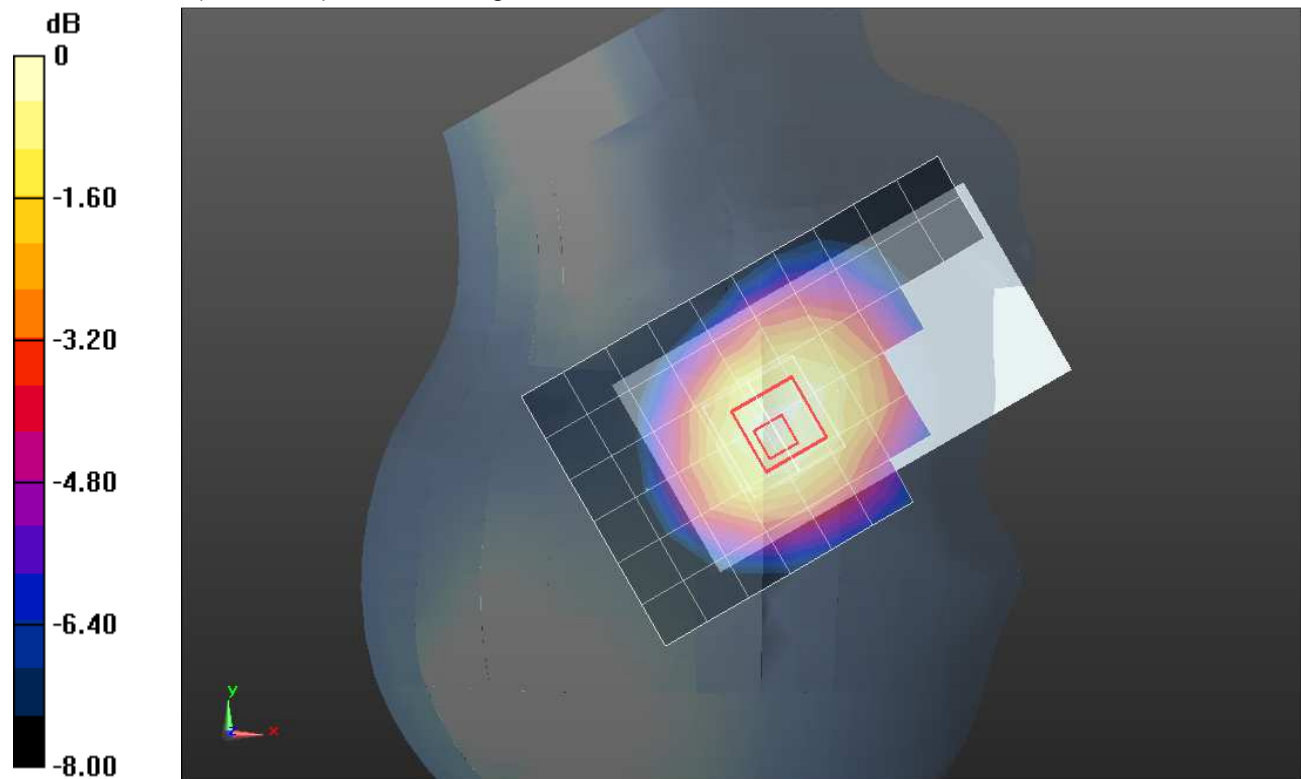
Reference Value = 16.395 V/m; Power Drift = 0.0025 dB

Peak SAR (extrapolated) = 0.2960

SAR(1 g) = 0.213 mW/g; SAR(10 g) = 0.162 mW/g

[Info: Interpolated medium parameters used for SAR evaluation.](#)

Maximum value of SAR (measured) = 0.248 mW/g



0 dB = 0.250mW/g = -12.04 dB mW/g

WCDMA Band V

Frequency: 836.4 MHz; Duty Cycle: 1:1; Room Ambient Temperature: 24.0°C; Liquid Temperature: 23.0°C

Medium parameters used (interpolated): $f = 836.4$ MHz; $\sigma = 1.01$ mho/m; $\epsilon_r = 56.637$; $\rho = 1000$ kg/m³

DASY5 Configuration:

- Area Scan setting - Find Secondary Maximum Within: 2.0 dB and with a peak SAR value greater than 0.0012W/kg
- Electronics: DAE4 Sn1259; Calibrated: 2/13/2012
- Probe: EX3DV4 - SN3686; ConvF(8.73, 8.73, 8.73); Calibrated: 2/16/2012
- Sensor-Surface: 2.5mm (Mechanical Surface Detection)
- Phantom: ELI v5.0 (B); Type: QDOVA001BB; Serial: 1118

Body/Rear/Rel. 99/10mm/Ch 4182/Area Scan (7x10x1): Measurement grid: dx=15mm, dy=15mm

[Info: Interpolated medium parameters used for SAR evaluation.](#)

Maximum value of SAR (measured) = 0.892 mW/g

Body/Rear/Rel. 99/10mm/Ch 4182/Zoom Scan (5x5x7)/Cube 0: Measurement grid: dx=8mm,

dy=8mm, dz=5mm

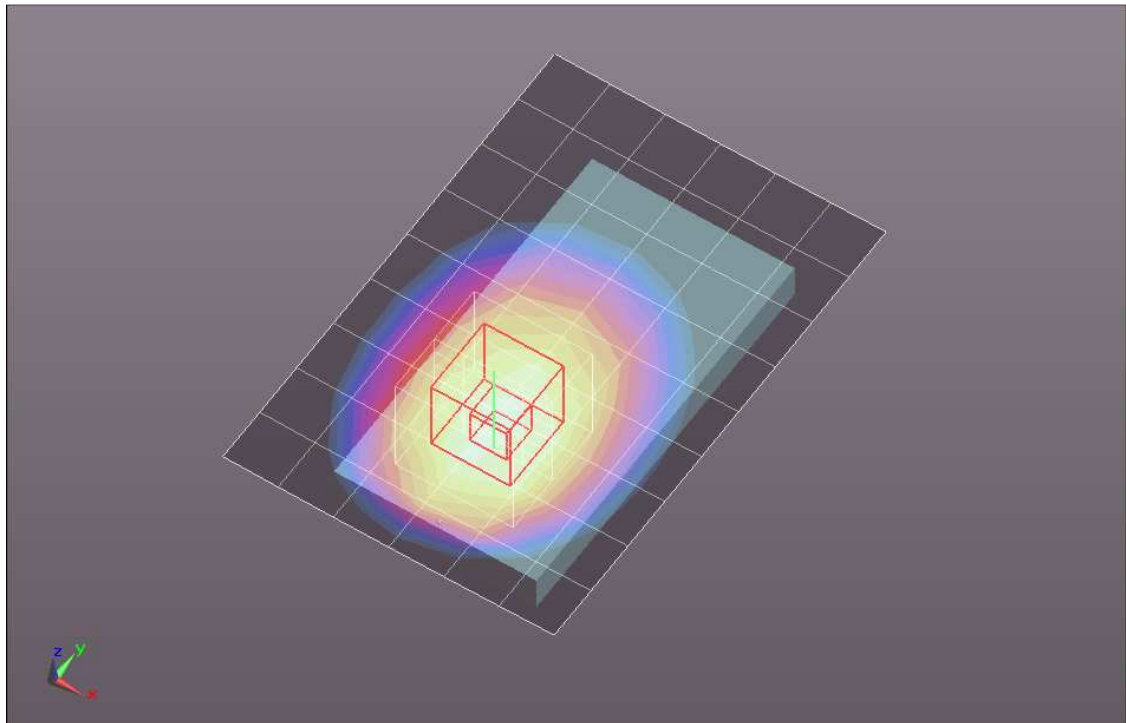
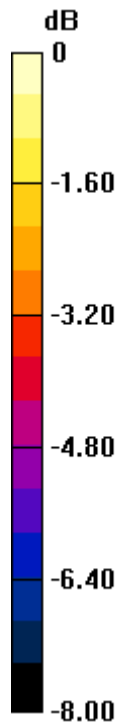
Reference Value = 30.613 V/m; Power Drift = -0.13 dB

Peak SAR (extrapolated) = 1.1000

SAR(1 g) = 0.792 mW/g; SAR(10 g) = 0.555 mW/g

[Info: Interpolated medium parameters used for SAR evaluation.](#)

Maximum value of SAR (measured) = 0.924 mW/g



0 dB = 0.920mW/g = -0.72 dB mW/g

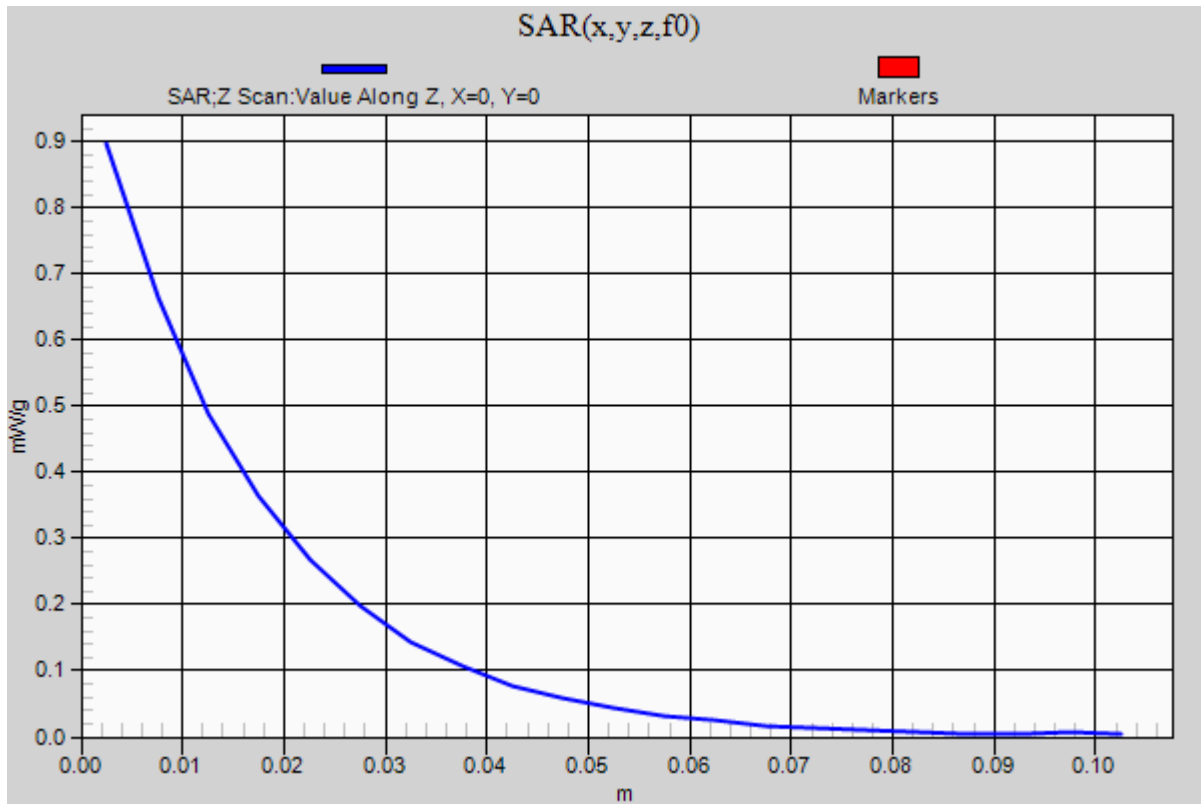
WCDMA Band V

Frequency: 836.4 MHz; Duty Cycle: 1:1

Body/Rear/Rel. 99/10mm/Ch 4182/Z Scan (1x1x21): Measurement grid: dx=20mm, dy=20mm, dz=5mm

Info: [Interpolated medium parameters used for SAR evaluation.](#)

Maximum value of SAR (measured) = 0.897 mW/g



WCDMA Band V

Frequency: 836.4 MHz; Duty Cycle: 1:1; Room Ambient Temperature: 24.0°C; Liquid Temperature: 23.0°C
Medium parameters used (interpolated): $f = 836.4$ MHz; $\sigma = 1.01$ mho/m; $\epsilon_r = 56.637$; $\rho = 1000$ kg/m³

DASY5 Configuration:

- Area Scan setting - Find Secondary Maximum Within: 2.0 dB and with a peak SAR value greater than 0.0012W/kg
- Electronics: DAE4 Sn1259; Calibrated: 2/13/2012
- Probe: EX3DV4 - SN3686; ConvF(8.73, 8.73, 8.73); Calibrated: 2/16/2012
- Sensor-Surface: 2.5mm (Mechanical Surface Detection)
- Phantom: ELI v5.0 (B); Type: QDOVA001BB; Serial: 1118

Body/Rear/Rel. 99/10mm/Ch 4182 with headset/Area Scan (7x10x1): Measurement grid:

$dx=15$ mm, $dy=15$ mm

[Info: Interpolated medium parameters used for SAR evaluation.](#)

Maximum value of SAR (measured) = 0.780 mW/g

Body/Rear/Rel. 99/10mm/Ch 4182 with headset/Zoom Scan (5x5x7)/Cube 0: Measurement

grid: $dx=8$ mm, $dy=8$ mm, $dz=5$ mm

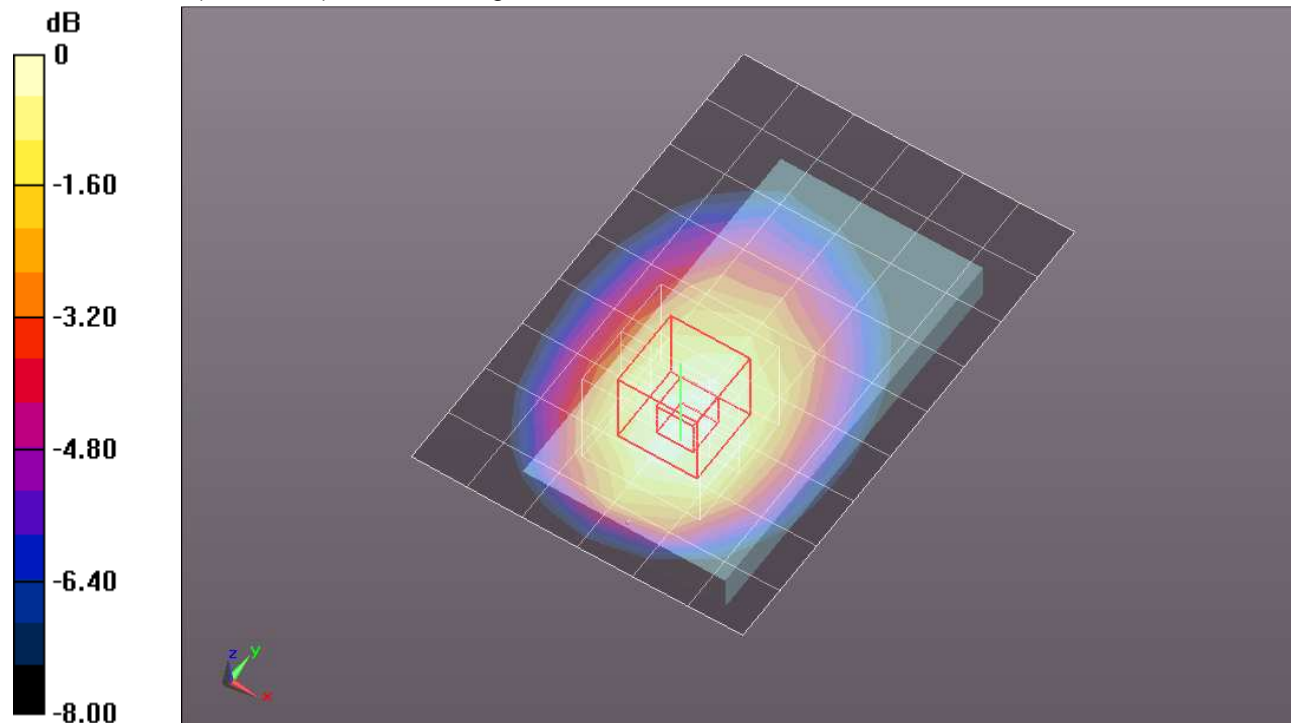
Reference Value = 28.204 V/m; Power Drift = -0.01 dB

Peak SAR (extrapolated) = 0.9310

SAR(1 g) = 0.676 mW/g; SAR(10 g) = 0.478 mW/g

[Info: Interpolated medium parameters used for SAR evaluation.](#)

Maximum value of SAR (measured) = 0.784 mW/g



0 dB = 0.780mW/g = -2.16 dB mW/g

WCDMA Band V

Frequency: 836.4 MHz; Duty Cycle: 1:1; Room Ambient Temperature: 24.0°C; Liquid Temperature: 23.0°C

Medium parameters used (interpolated): $f = 836.4$ MHz; $\sigma = 1.01$ mho/m; $\epsilon_r = 56.637$; $\rho = 1000$ kg/m³

DASY5 Configuration:

- Area Scan setting - Find Secondary Maximum Within: 2.0 dB and with a peak SAR value greater than 0.0012W/kg
- Electronics: DAE4 Sn1259; Calibrated: 2/13/2012
- Probe: EX3DV4 - SN3686; ConvF(8.73, 8.73, 8.73); Calibrated: 2/16/2012
- Sensor-Surface: 2.5mm (Mechanical Surface Detection)
- Phantom: ELI v5.0 (B); Type: QDOVA001BB; Serial: 1118

Body/Front/Rel. 99/10mm/Ch 4182/Area Scan (7x10x1): Measurement grid: dx=15mm, dy=15mm

[Info: Interpolated medium parameters used for SAR evaluation.](#)

Maximum value of SAR (measured) = 0.440 mW/g

Body/Front/Rel. 99/10mm/Ch 4182/Zoom Scan (5x5x7)/Cube 0: Measurement grid: dx=8mm,

dy=8mm, dz=5mm

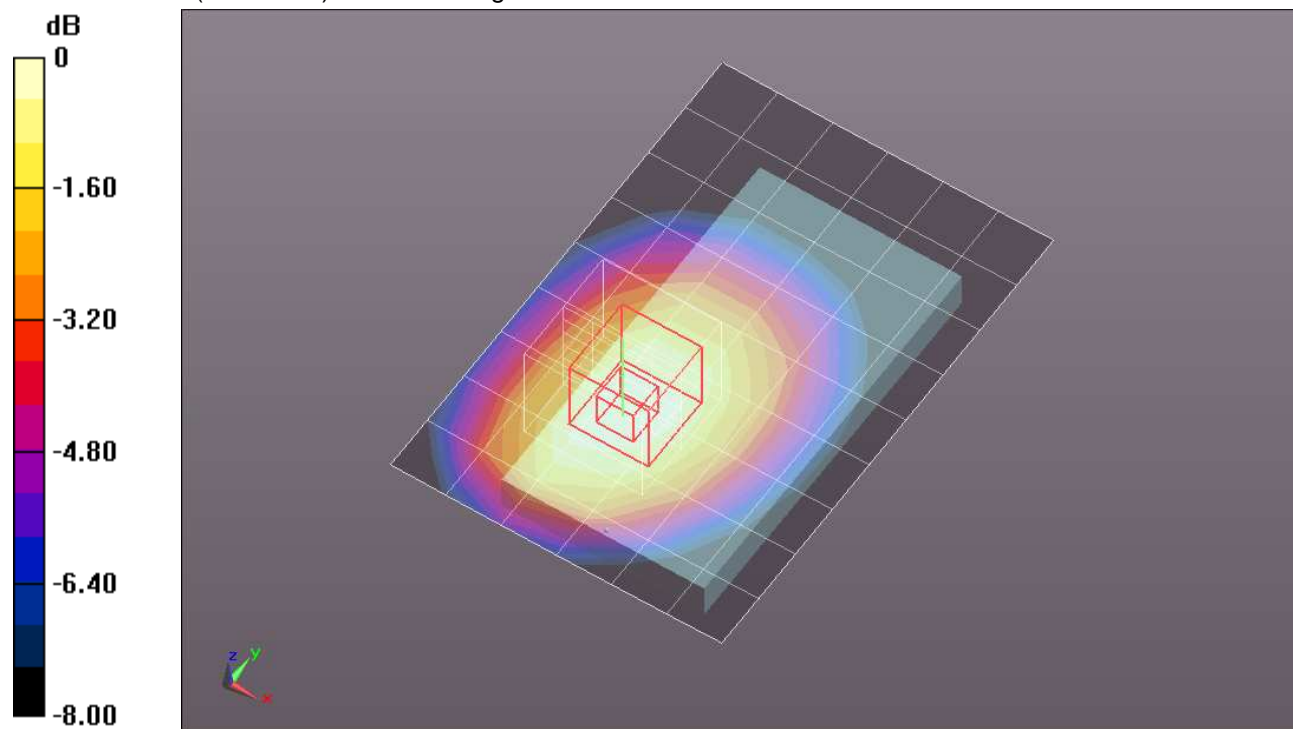
Reference Value = 21.137 V/m; Power Drift = -0.02 dB

Peak SAR (extrapolated) = 0.5270

SAR(1 g) = 0.400 mW/g; SAR(10 g) = 0.292 mW/g

[Info: Interpolated medium parameters used for SAR evaluation.](#)

Maximum value of SAR (measured) = 0.459 mW/g



0 dB = 0.460mW/g = -6.74 dB mW/g

WCDMA Band V

Frequency: 836.4 MHz; Duty Cycle: 1:1; Room Ambient Temperature: 24.0°C; Liquid Temperature: 23.0°C

Medium parameters used (interpolated): $f = 836.4$ MHz; $\sigma = 1.01$ mho/m; $\epsilon_r = 56.637$; $\rho = 1000$ kg/m³

DASY5 Configuration:

- Area Scan setting - Find Secondary Maximum Within: 2.0 dB and with a peak SAR value greater than 0.0012W/kg
- Electronics: DAE4 Sn1259; Calibrated: 2/13/2012
- Probe: EX3DV4 - SN3686; ConvF(8.73, 8.73, 8.73); Calibrated: 2/16/2012
- Sensor-Surface: 2.5mm (Mechanical Surface Detection)
- Phantom: ELI v5.0 (B); Type: QDOVA001BB; Serial: 1118

Body/Edge 2/Rel. 99/10mm/Ch 4182/Area Scan (6x12x1): Measurement grid: dx=15mm, dy=15mm

[Info: Interpolated medium parameters used for SAR evaluation.](#)

Maximum value of SAR (measured) = 0.174 mW/g

Body/Edge 2/Rel. 99/10mm/Ch 4182/Zoom Scan (5x5x7)/Cube 0: Measurement grid: dx=8mm,

dy=8mm, dz=5mm

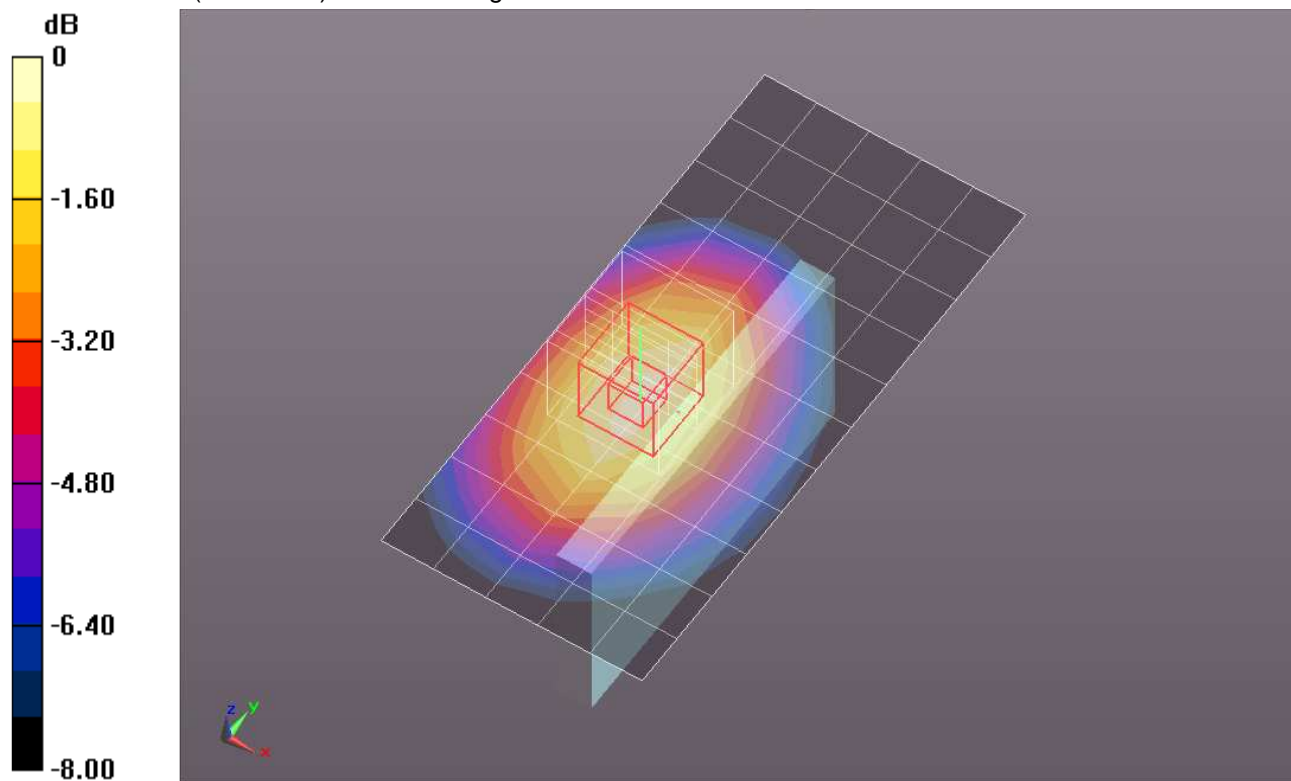
Reference Value = 13.238 V/m; Power Drift = -0.01 dB

Peak SAR (extrapolated) = 0.2070

SAR(1 g) = 0.150 mW/g; SAR(10 g) = 0.105 mW/g

[Info: Interpolated medium parameters used for SAR evaluation.](#)

Maximum value of SAR (measured) = 0.176 mW/g



0 dB = 0.180mW/g = -14.89 dB mW/g

WCDMA Band V

Frequency: 836.4 MHz; Duty Cycle: 1:1; Room Ambient Temperature: 24.0°C; Liquid Temperature: 23.0°C

Medium parameters used (interpolated): $f = 836.4$ MHz; $\sigma = 1.01$ mho/m; $\epsilon_r = 56.637$; $\rho = 1000$ kg/m³

DASY5 Configuration:

- Area Scan setting - Find Secondary Maximum Within: 2.0 dB and with a peak SAR value greater than 0.0012W/kg
- Electronics: DAE4 Sn1259; Calibrated: 2/13/2012
- Probe: EX3DV4 - SN3686; ConvF(8.73, 8.73, 8.73); Calibrated: 2/16/2012
- Sensor-Surface: 2.5mm (Mechanical Surface Detection)
- Phantom: ELI v5.0 (B); Type: QDOVA001BB; Serial: 1118

Body/Edge 3/Rel. 99/10mm/Ch 4182/Area Scan (6x8x1): Measurement grid: dx=15mm, dy=15mm

[Info: Interpolated medium parameters used for SAR evaluation.](#)

Maximum value of SAR (measured) = 0.083 mW/g

Body/Edge 3/Rel. 99/10mm/Ch 4182/Zoom Scan (5x5x7)/Cube 0: Measurement grid: dx=8mm,

dy=8mm, dz=5mm

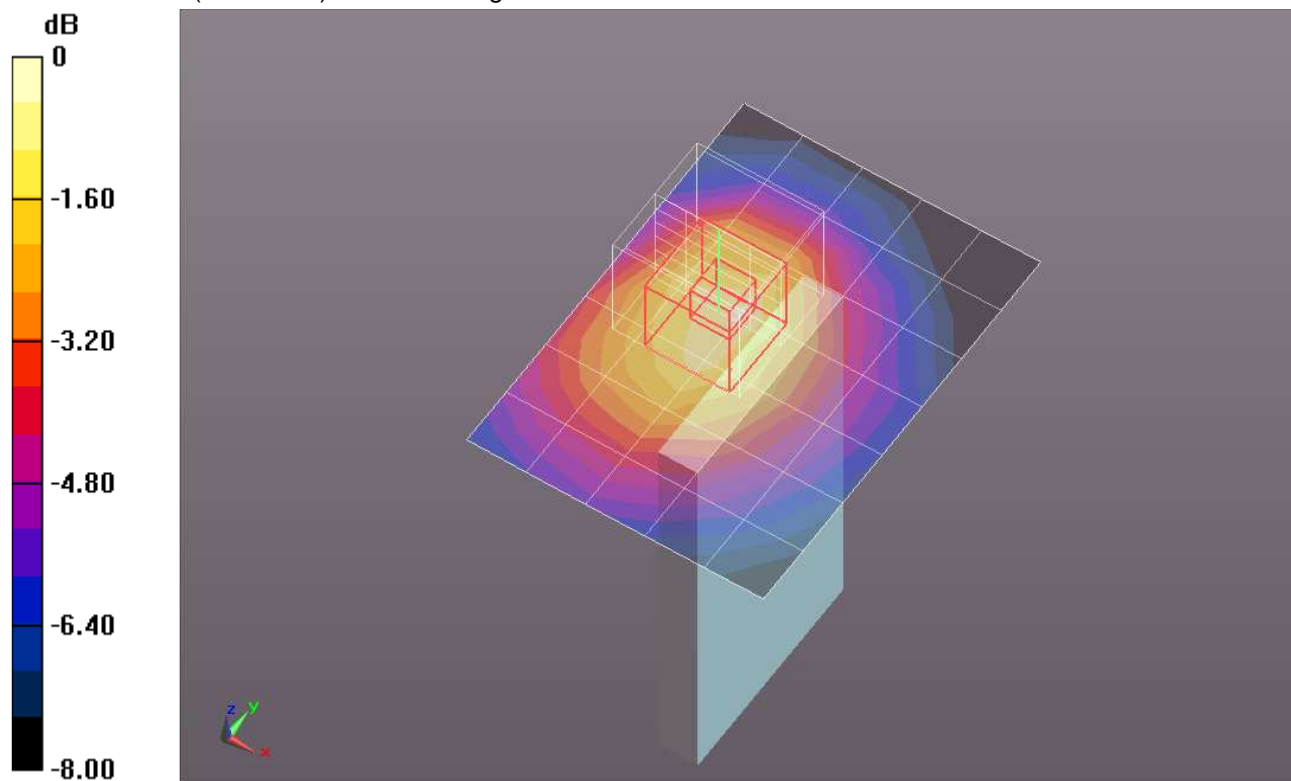
Reference Value = 9.270 V/m; Power Drift = 0.13 dB

Peak SAR (extrapolated) = 0.1240

SAR(1 g) = 0.074 mW/g; SAR(10 g) = 0.047 mW/g

[Info: Interpolated medium parameters used for SAR evaluation.](#)

Maximum value of SAR (measured) = 0.092 mW/g



0 dB = 0.090mW/g = -20.92 dB mW/g

WCDMA Band V

Frequency: 836.4 MHz; Duty Cycle: 1:1; Room Ambient Temperature: 24.0°C; Liquid Temperature: 23.0°C

Medium parameters used (interpolated): $f = 836.4$ MHz; $\sigma = 1.01$ mho/m; $\epsilon_r = 56.637$; $\rho = 1000$ kg/m³

DASY5 Configuration:

- Area Scan setting - Find Secondary Maximum Within: 2.0 dB and with a peak SAR value greater than 0.0012W/kg
- Electronics: DAE4 Sn1259; Calibrated: 2/13/2012
- Probe: EX3DV4 - SN3686; ConvF(8.73, 8.73, 8.73); Calibrated: 2/16/2012
- Sensor-Surface: 2.5mm (Mechanical Surface Detection)
- Phantom: ELI v5.0 (B); Type: QDOVA001BB; Serial: 1118

Body/Edge 4/Rel. 99/10mm/Ch 4182/Area Scan (6x12x1): Measurement grid: dx=15mm, dy=15mm

[Info: Interpolated medium parameters used for SAR evaluation.](#)

Maximum value of SAR (measured) = 0.343 mW/g

Body/Edge 4/Rel. 99/10mm/Ch 4182/Zoom Scan (5x5x7)/Cube 0: Measurement grid: dx=8mm,

dy=8mm, dz=5mm

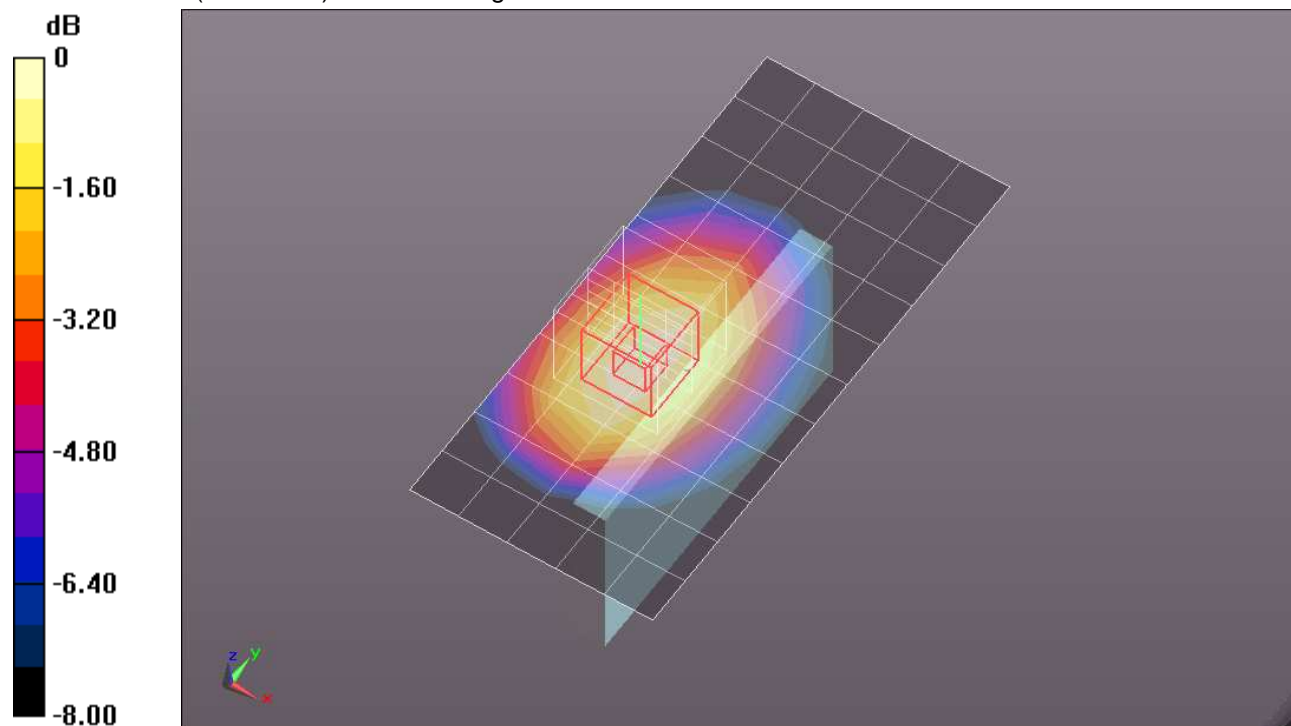
Reference Value = 18.539 V/m; Power Drift = -0.07 dB

Peak SAR (extrapolated) = 0.4060

SAR(1 g) = 0.292 mW/g; SAR(10 g) = 0.204 mW/g

[Info: Interpolated medium parameters used for SAR evaluation.](#)

Maximum value of SAR (measured) = 0.344 mW/g



0 dB = 0.340mW/g = -9.37 dB mW/g