

## **APPENDIX 1 : Photographs of test setup**

### **1. Photographs of EUT**

Top edge



Right edge



Front



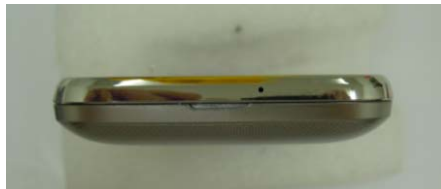
Left edge



Back



Bottom edge



## 2. Antenna position

### \* Antenna pattern

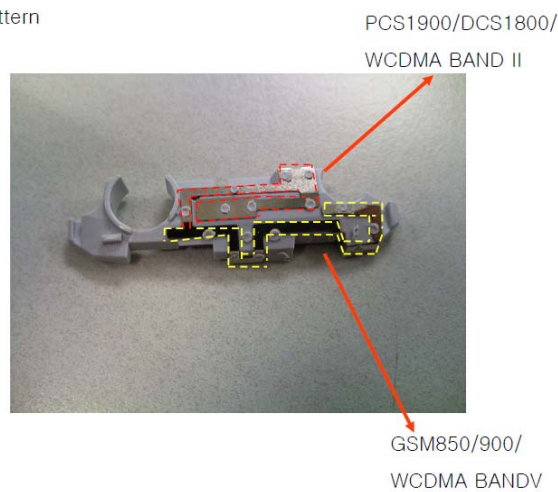


Unit : mm

### Antenna distance

- \*WWAN (TX 850MHz) to WLAN (TX): 82mm
- \*WWAN (TX 1900MHz) to WLAN (TX): 90mm

### \* Antenna pattern



UL Japan, Inc.

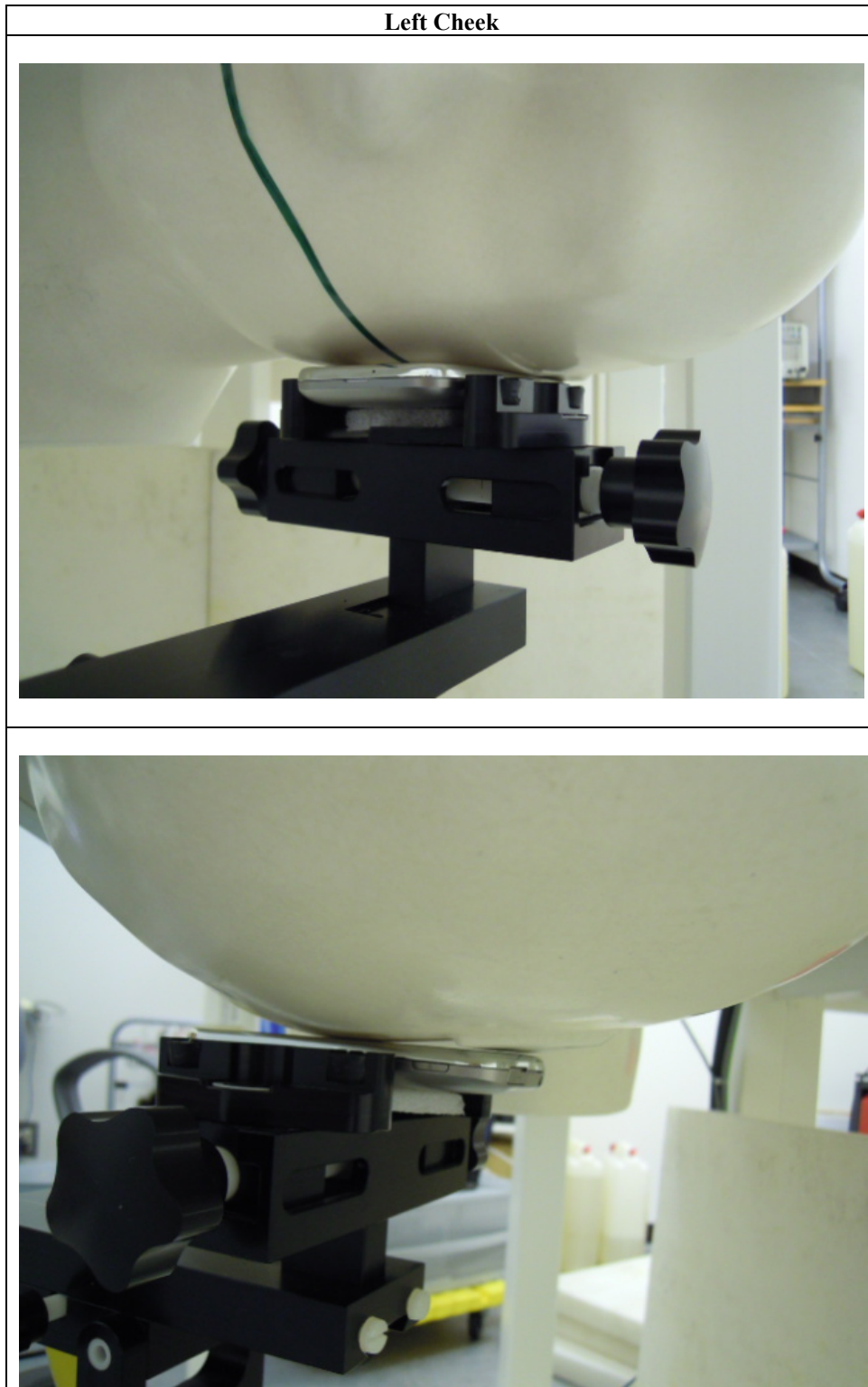
Head Office EMC Lab.

4383-326 Asama-cho, Ise-shi, Mie-ken 516-0021 JAPAN

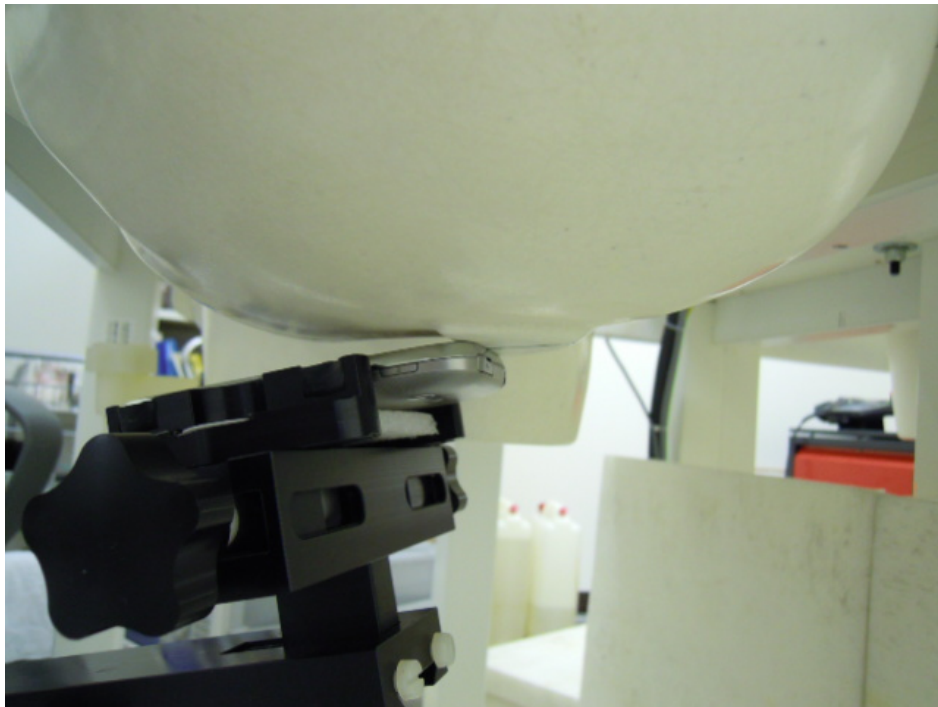
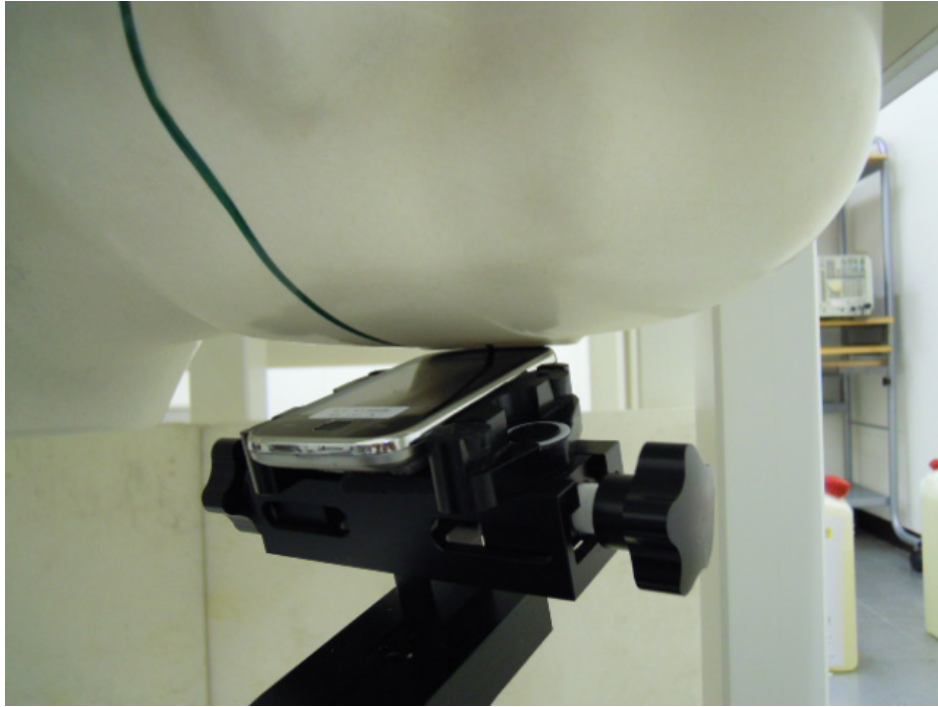
Telephone: +81 596 24 8116

Facsimile: +81 596 24 8124

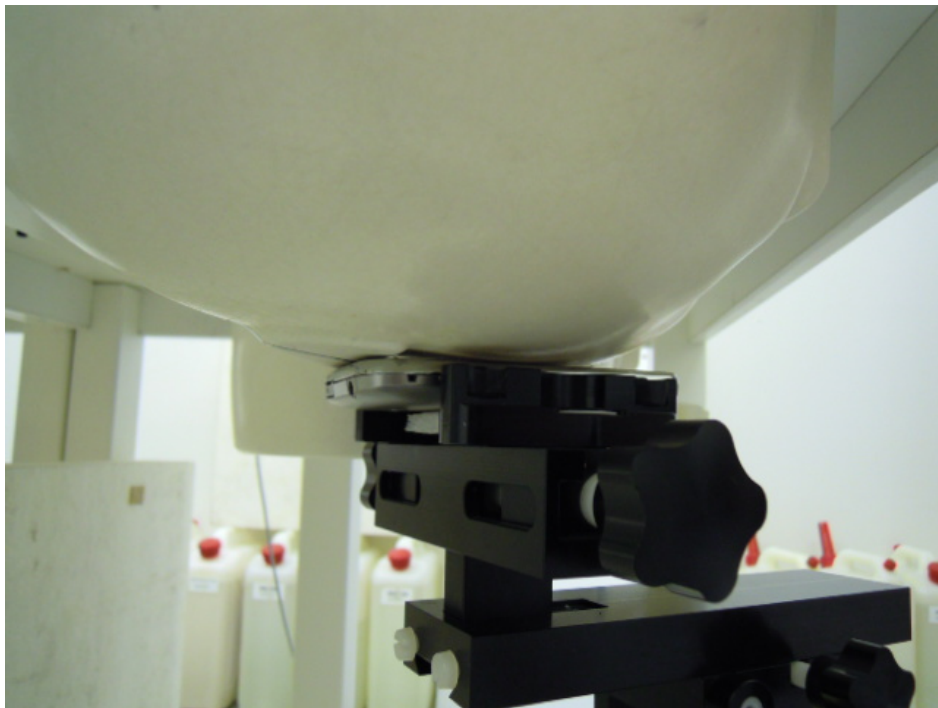
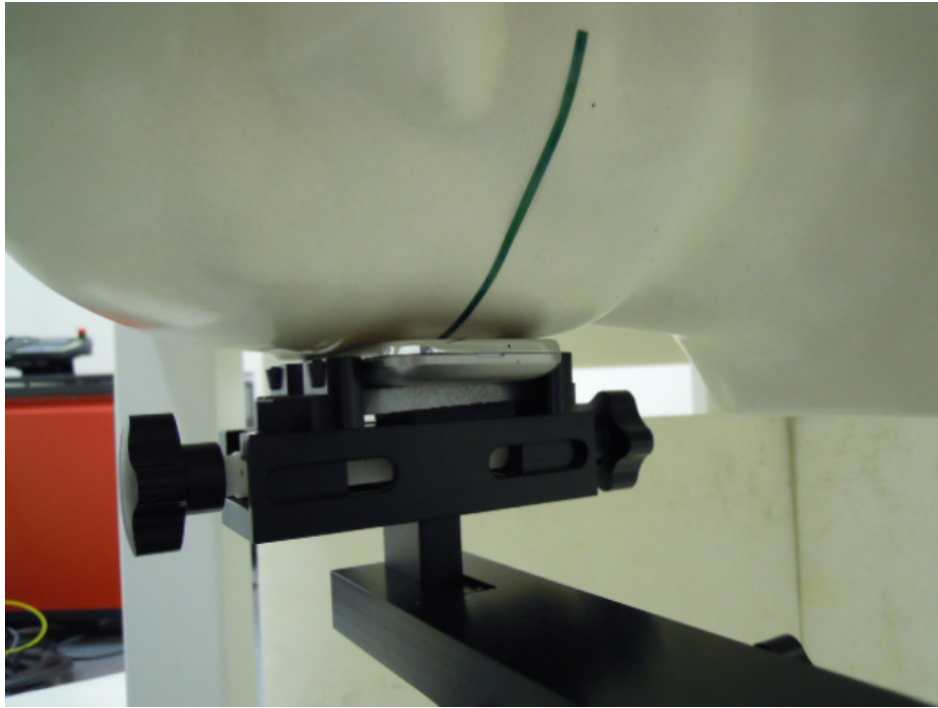
3. Photographs of setup



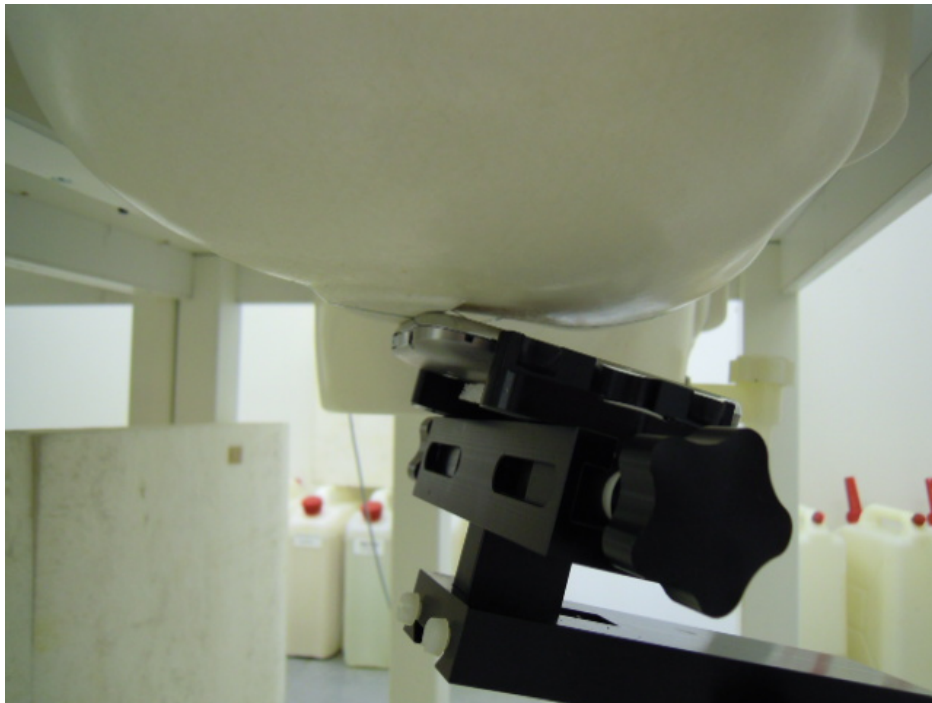
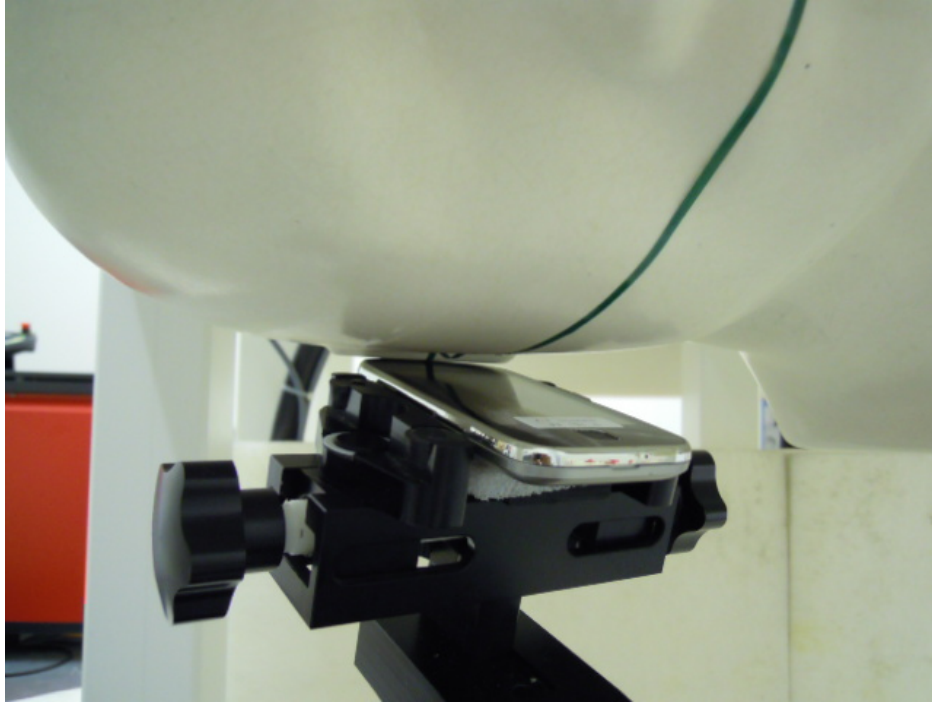
Left Tilt



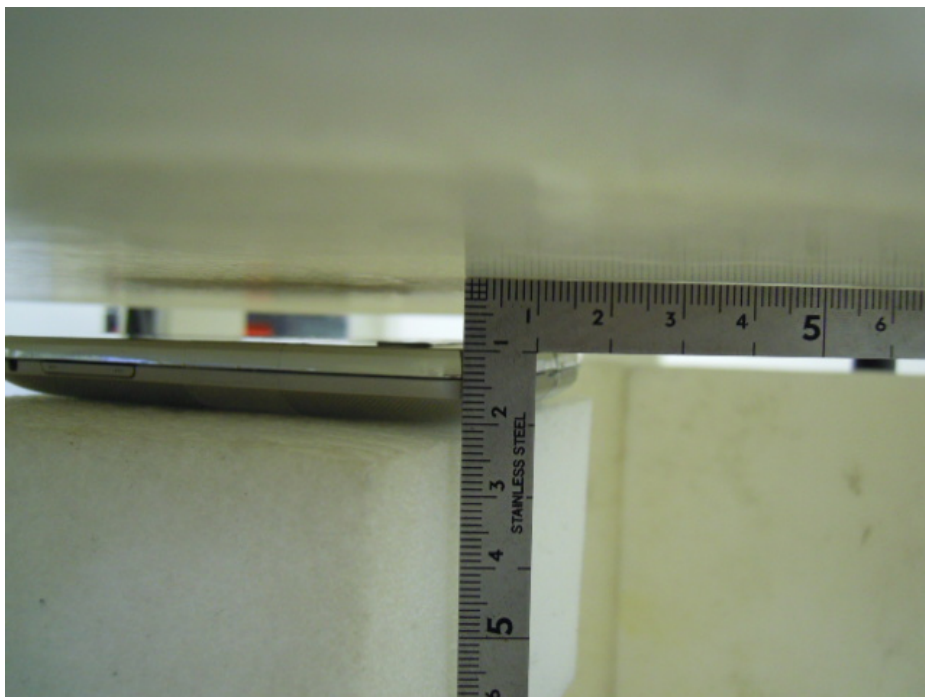
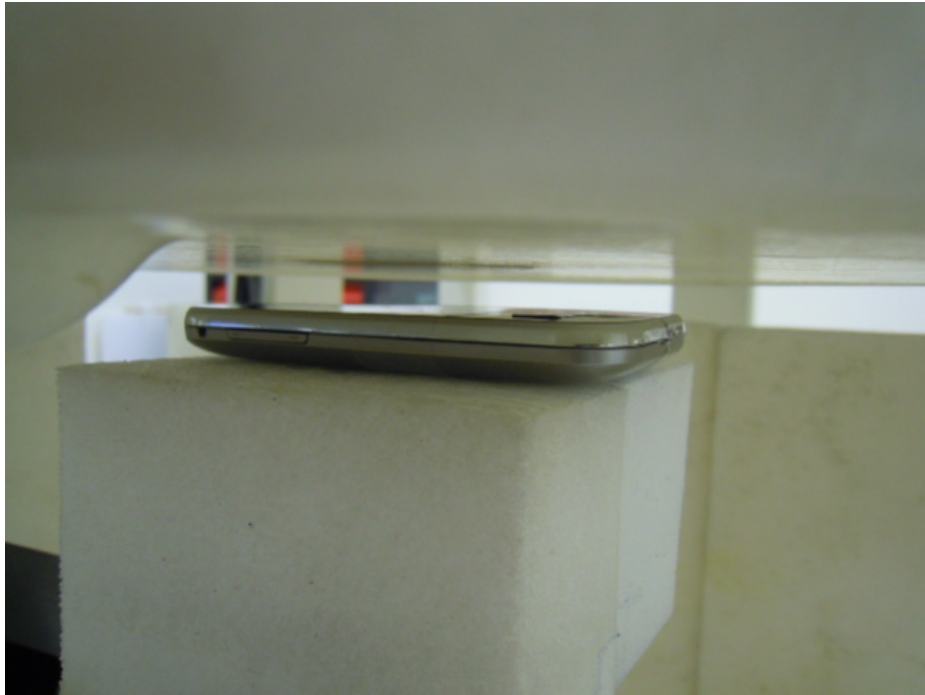
**Right Check**



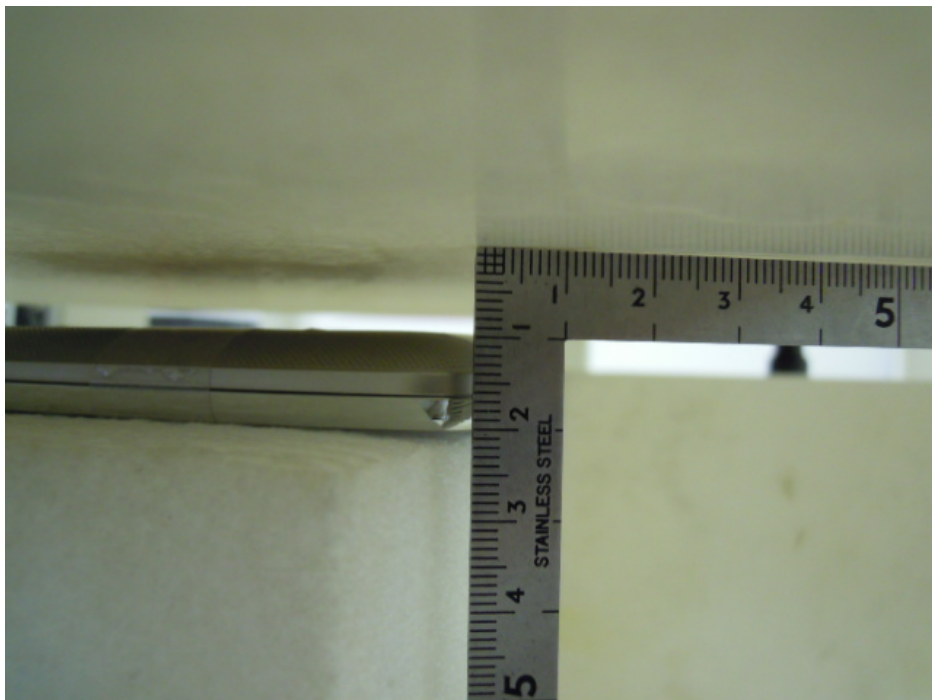
**Right Tilt**



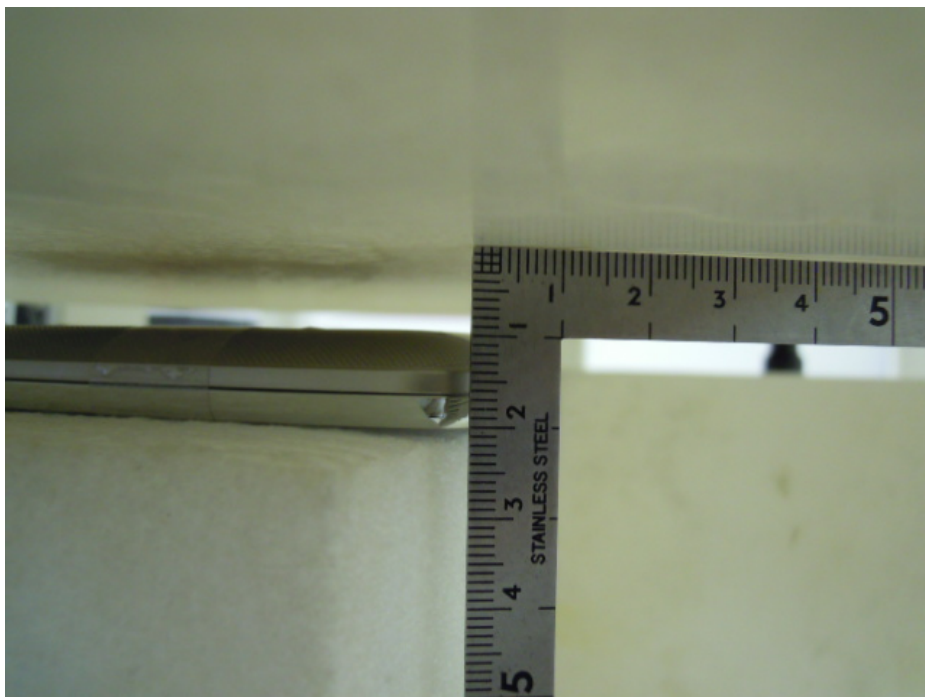
**Body Front 10mm (Hotspot mode)**



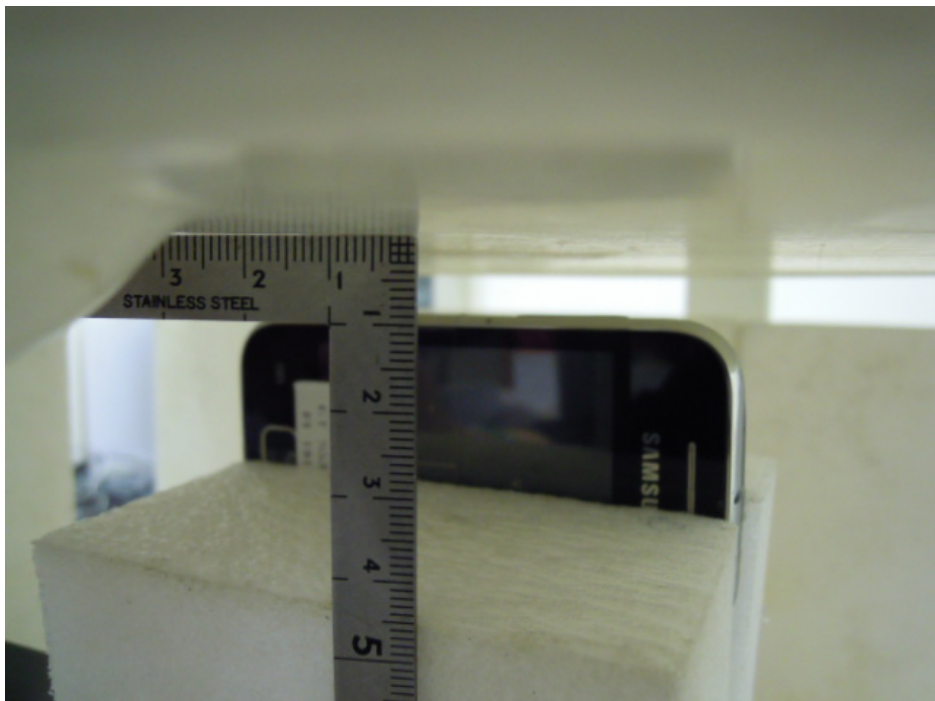
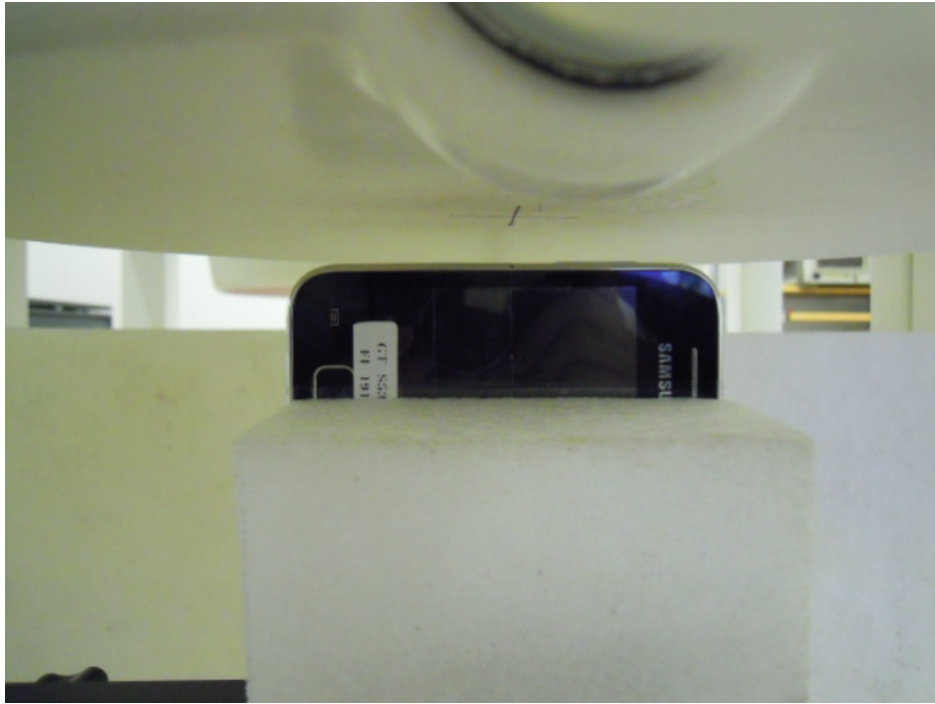
**Body Back10mm (Hotspot mode)**



**Body Left edge10mm (Hotspot mode)**



**Body Right edge 10mm (Hotspot mode)**



**Body Bottom edge 10mm (Hotspot mode)**

