

2.4GHz Band

Frequency: 2437 MHz; Duty Cycle: 1:1; Room Ambient Temperature: 24.0°C; Liquid Temperature: 23.0°C
 Medium parameters used (interpolated): $f = 2437$ MHz; $\sigma = 1.928$ mho/m; $\epsilon_r = 54.038$; $\rho = 1000$ kg/m³

DASY5 Configuration:

- Electronics: DAE3 Sn500; Calibrated: 7/14/2011
- Probe: EX3DV4 - SN3772; ConvF(6.41, 6.41, 6.41); Calibrated: 5/3/2011
- Sensor-Surface: 2.5mm (Mechanical Surface Detection (Locations From Previous Scan Used)), Sensor-Surface: 2.5mm (Mechanical Surface Detection)
- Phantom: ELI v5.0 (B); Type: QDOVA001BB; Serial: 1118

802.11b/Rear/Area Scan (8x10x1): Measurement grid: dx=15mm, dy=15mm

[Info: Interpolated medium parameters used for SAR evaluation.](#)

Maximum value of SAR (measured) = 0.656 mW/g

802.11b/Rear/Zoom Scan (5x5x7)/Cube 0: Measurement grid: dx=8mm, dy=8mm, dz=5mm

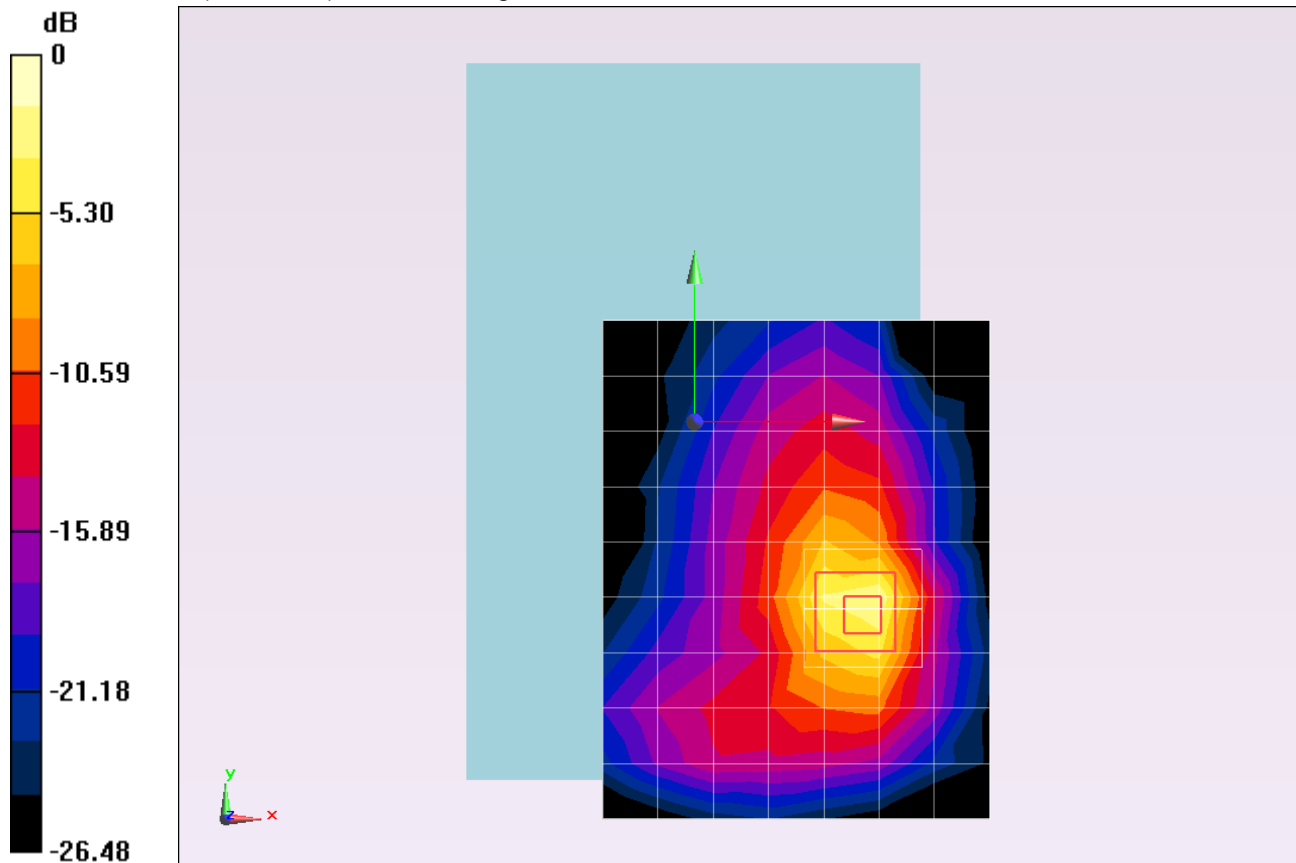
Reference Value = 19.091 V/m; Power Drift = -0.01 dB

Peak SAR (extrapolated) = 1.6700

SAR(1 g) = 0.631 mW/g; SAR(10 g) = 0.255 mW/g

[Info: Interpolated medium parameters used for SAR evaluation.](#)

Maximum value of SAR (measured) = 0.992 mW/g



0 dB = 0.990mW/g = -0.09 dB mW/g

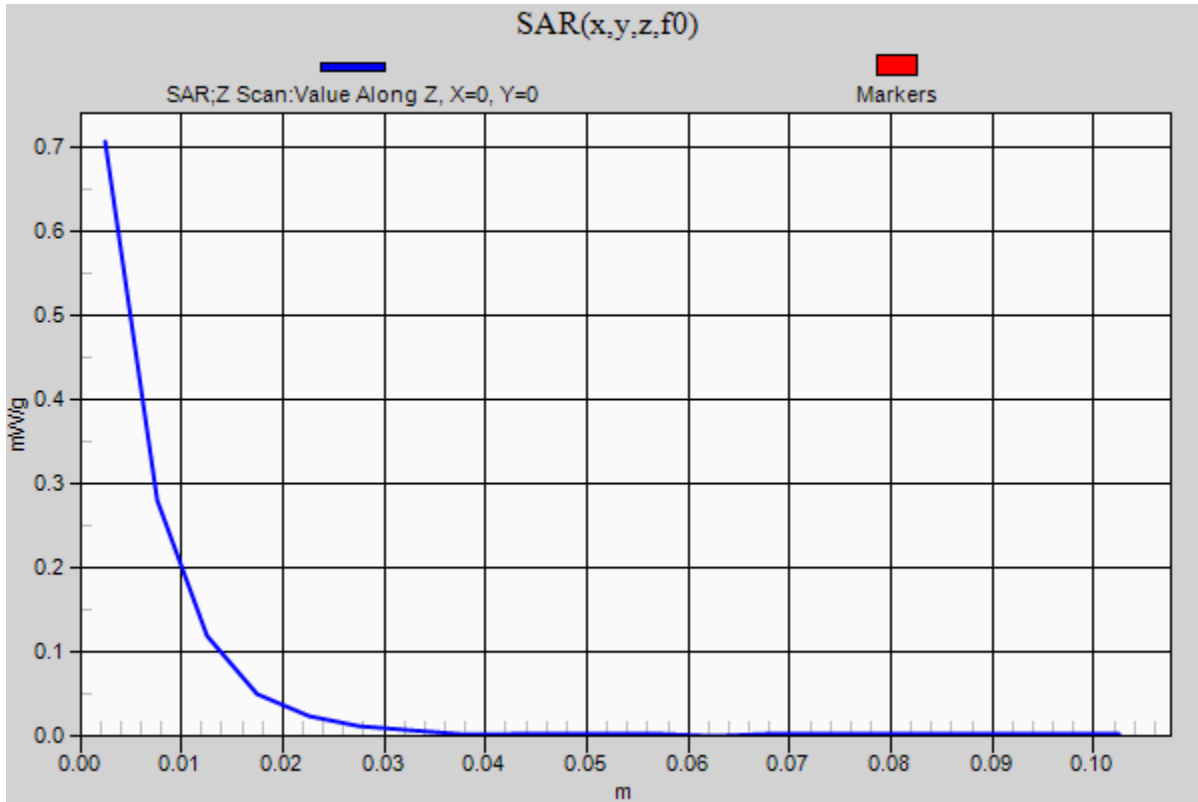
2.4GHz Band

Frequency: 2437 MHz; Duty Cycle: 1:1

802.11b/Rear/Z Scan (1x1x21): Measurement grid: dx=20mm, dy=20mm, dz=5mm

Info: [Interpolated medium parameters used for SAR evaluation.](#)

Maximum value of SAR (measured) = 0.707 mW/g



2.4GHz Band

Frequency: 2437 MHz; Duty Cycle: 1:1; Room Ambient Temperature: 24.0°C; Liquid Temperature: 23.0°C
 Medium parameters used (interpolated): $f = 2437$ MHz; $\sigma = 1.928$ mho/m; $\epsilon_r = 54.038$; $\rho = 1000$ kg/m³

DASY5 Configuration:

- Electronics: DAE3 Sn500; Calibrated: 7/14/2011
- Probe: EX3DV4 - SN3772; ConvF(6.41, 6.41, 6.41); Calibrated: 5/3/2011
- Sensor-Surface: 2.5mm (Mechanical Surface Detection (Locations From Previous Scan Used)), Sensor-Surface: 2.5mm (Mechanical Surface Detection)
- Phantom: ELI v5.0 (B); Type: QDOVA001BB; Serial: 1118

802.11b/Rear w/Head Set/Area Scan (8x10x1): Measurement grid: dx=15mm, dy=15mm

[Info: Interpolated medium parameters used for SAR evaluation.](#)

Maximum value of SAR (measured) = 0.665 mW/g

802.11b/Rear w/Head Set/Zoom Scan (5x5x7)/Cube 0: Measurement grid: dx=8mm, dy=8mm, dz=5mm

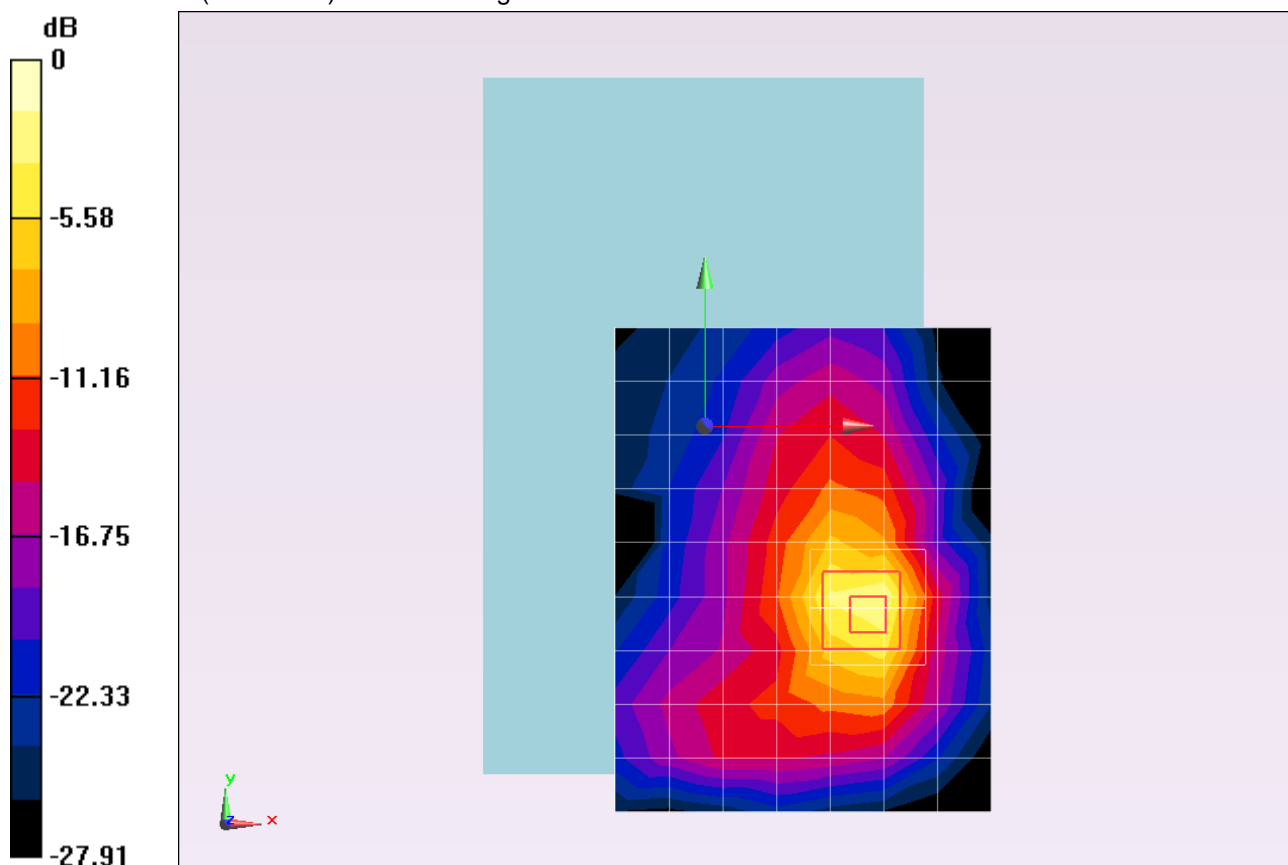
Reference Value = 19.202 V/m; Power Drift = -0.14 dB

Peak SAR (extrapolated) = 1.6800

SAR(1 g) = 0.630 mW/g; SAR(10 g) = 0.254 mW/g

[Info: Interpolated medium parameters used for SAR evaluation.](#)

Maximum value of SAR (measured) = 1.004 mW/g



0 dB = 1.000mW/g = 0 dB mW/g

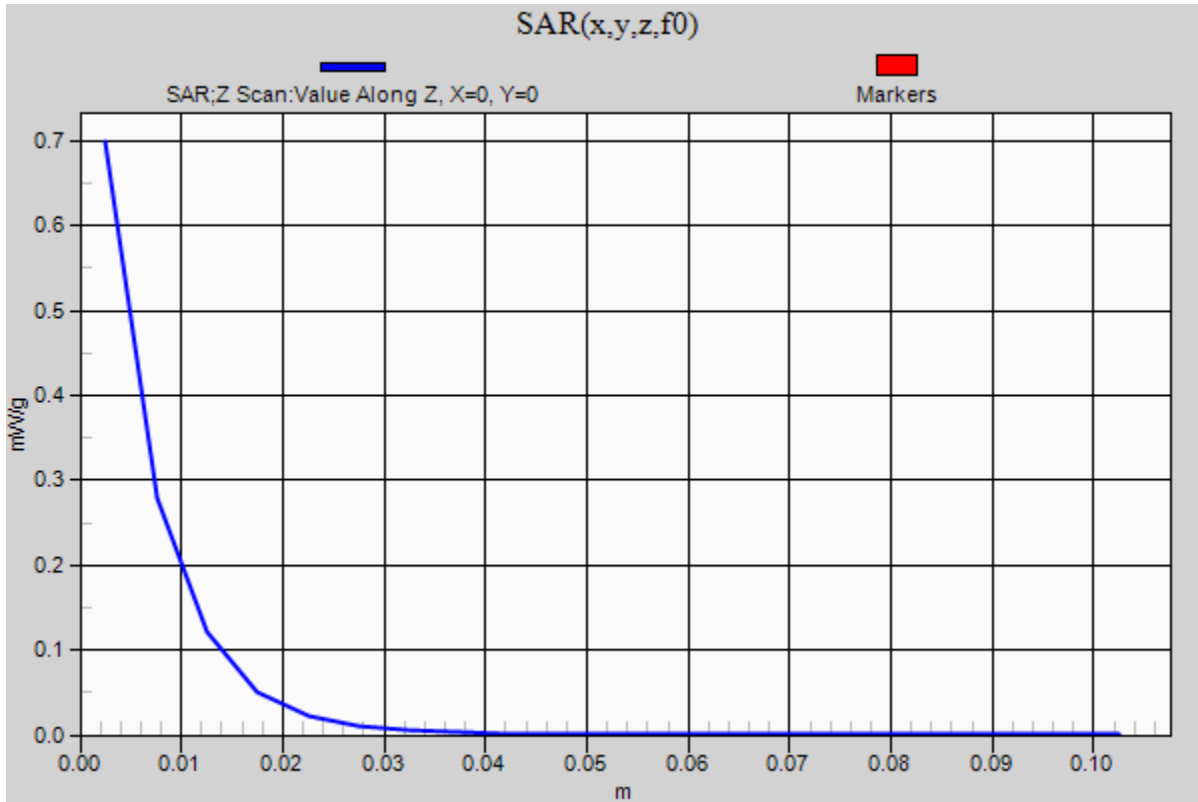
2.4GHz Band

Frequency: 2437 MHz; Duty Cycle: 1:1

802.11b/Rear w/Head Set/Z Scan (1x1x21): Measurement grid: dx=20mm, dy=20mm, dz=5mm

Info: [Interpolated medium parameters used for SAR evaluation.](#)

Maximum value of SAR (measured) = 0.699 mW/g



2.4GHz Band

Frequency: 2437 MHz; Duty Cycle: 1:1; Room Ambient Temperature: 24.0°C; Liquid Temperature: 23.0°C
 Medium parameters used (interpolated): $f = 2437$ MHz; $\sigma = 1.928$ mho/m; $\epsilon_r = 54.038$; $\rho = 1000$ kg/m³

DASY5 Configuration:

- Electronics: DAE3 Sn500; Calibrated: 7/14/2011
- Probe: EX3DV4 - SN3772; ConvF(6.41, 6.41, 6.41); Calibrated: 5/3/2011
- Sensor-Surface: 2.5mm (Mechanical Surface Detection)
- Phantom: ELI v5.0 (B); Type: QDOVA001BB; Serial: 1118

802.11b/Edge 2/Area Scan (7x14x1): Measurement grid: dx=15mm, dy=15mm

Info: [Interpolated medium parameters used for SAR evaluation.](#)

Maximum value of SAR (measured) = 0.575 mW/g

802.11b/Edge 2/Zoom Scan (5x5x7)/Cube 0: Measurement grid: dx=8mm, dy=8mm, dz=5mm

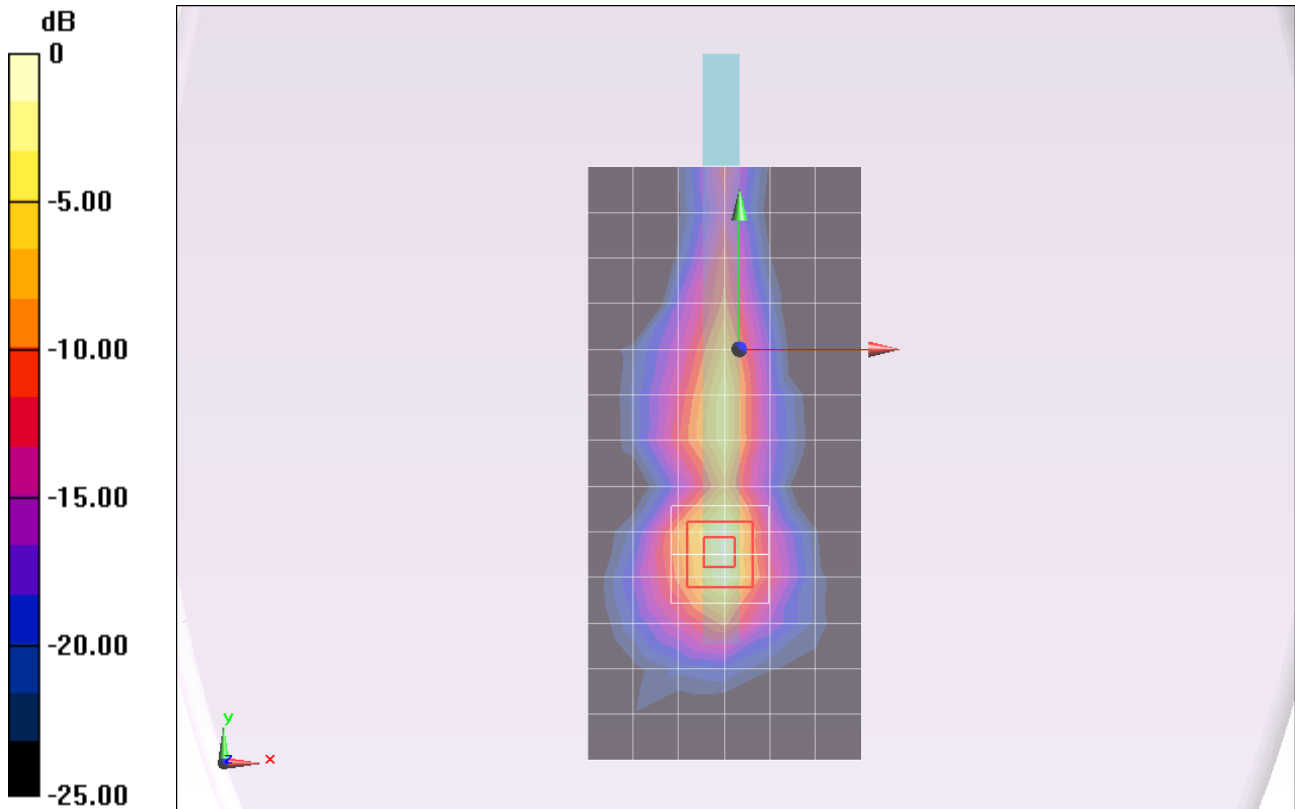
Reference Value = 17.195 V/m; Power Drift = 0.12 dB

Peak SAR (extrapolated) = 1.0220

SAR(1 g) = 0.454 mW/g; SAR(10 g) = 0.188 mW/g

Info: [Interpolated medium parameters used for SAR evaluation.](#)

Maximum value of SAR (measured) = 0.696 mW/g



0 dB = 0.700mW/g = -3.10 dB mW/g

Test Laboratory: UL CCS SAR Lab B

2.4 GHz Band

Communication System: WLAN_2.4GHz; Frequency: 2437 MHz; Duty Cycle: 1:1
 Medium parameters used (interpolated): $f = 2437$ MHz; $\sigma = 1.994$ mho/m; $\epsilon_r = 51.153$; $\rho = 1000$ kg/m³
 Phantom section: Flat Section

Room Ambient Temperature: 24.0 deg. C; Liquid Temperature: 23.0 deg. C

DASY5 Configuration:

- Area Scan setting - Find Secondary Maximum Within: 2.0 dB and with a peak SAR value greater than 0.0012W/kg
- Probe: EX3DV3 - SN3531; ConvF(7.44, 7.44, 7.44); Calibrated: 12/19/2011
- Sensor-Surface: 4mm (Mechanical Surface Detection)
- Electronics: DAE4 Sn1258; Calibrated: 5/2/2011
- Phantom: ELI v5.0 (B); Type: QDOVA001BB; Serial: 1118
- Measurement SW: DASY52, Version 52.8 (0); SEMCAD X Version 14.6.4 (4989)

Edge 4/Tilt_802.11b_Ch 6/Area Scan (8x16x1): Measurement grid: dx=15mm, dy=15mm

[Info: Interpolated medium parameters used for SAR evaluation.](#)

Maximum value of SAR (measured) = 0.188 mW/g

Edge 4/Tilt_802.11b_Ch 6/Zoom Scan (5x5x7)/Cube 0: Measurement grid: dx=8mm, dy=8mm, dz=5mm

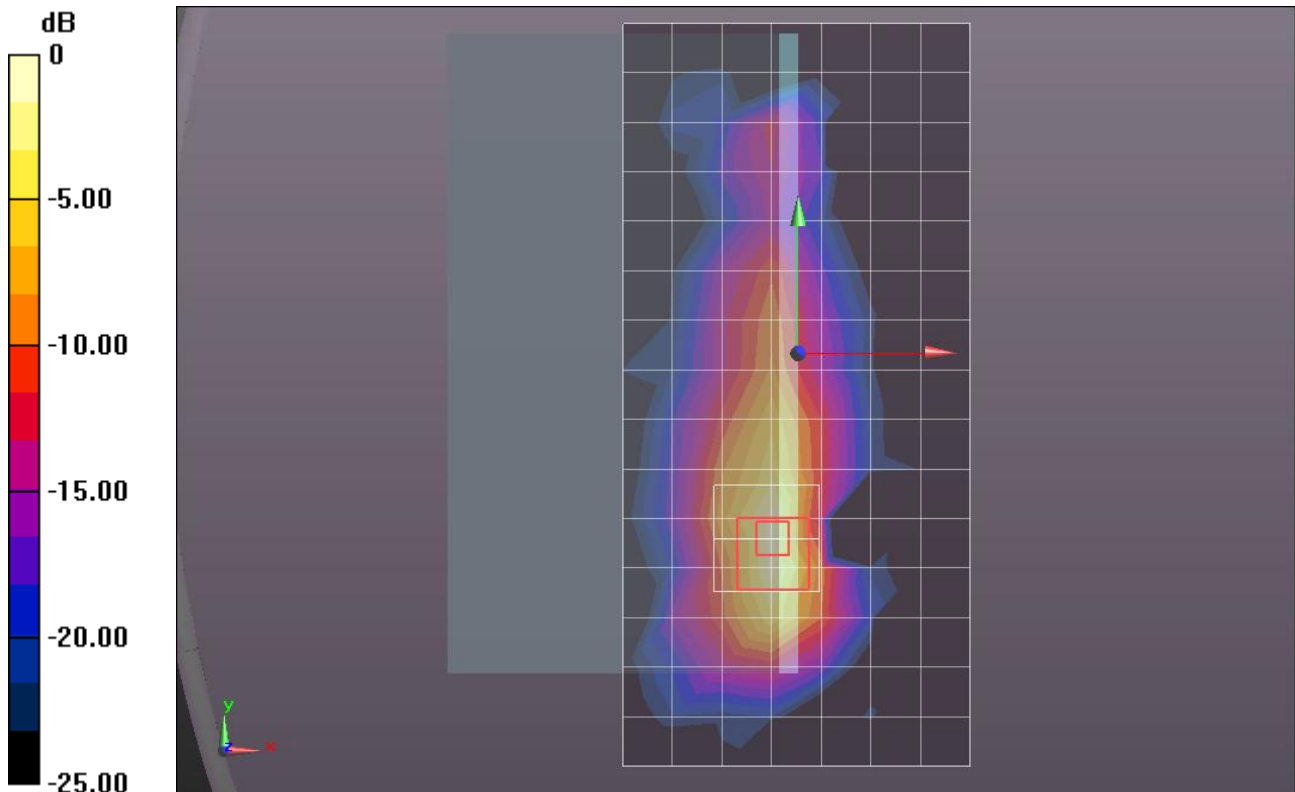
Reference Value = 3.449 V/m; Power Drift = 0.10 dB

Peak SAR (extrapolated) = 0.5360

SAR(1 g) = 0.188 mW/g; SAR(10 g) = 0.074 mW/g

[Info: Interpolated medium parameters used for SAR evaluation.](#)

Maximum value of SAR (measured) = 0.230 mW/g



0 dB = 0.230mW/g = -12.77 dB mW/g