

WiFi 2.4GHz Band

Frequency: 2437 MHz; Duty Cycle: 1:1; Room Ambient Temperature: 24.0°C; Liquid Temperature: 23.0°C
Medium parameters used (interpolated): $f = 2437$ MHz; $\sigma = 1.851$ mho/m; $\epsilon_r = 40.254$; $\rho = 1000$ kg/m³

DASY5 Configuration:

- Electronics: DAE4 Sn1259; Calibrated: 2/13/2012
- Probe: EX3DV3 - SN3531; ConvF(7.4, 7.4, 7.4); Calibrated: 12/19/2011
- Sensor-Surface: 2.5mm (Mechanical Surface Detection)
- Phantom: ELI v5.0 (A); Type: QDOVA001BB; Serial: 1120

Flat Phantom/802.11b, ch 6/Area Scan (12x17x1): Measurement grid: dx=15mm, dy=15mm

[Info: Interpolated medium parameters used for SAR evaluation.](#)

Maximum value of SAR (measured) = 0.212 mW/g

Flat Phantom/802.11b, ch 6/Zoom Scan (5x5x7)/Cube 0: Measurement grid: dx=8mm, dy=8mm, dz=5mm

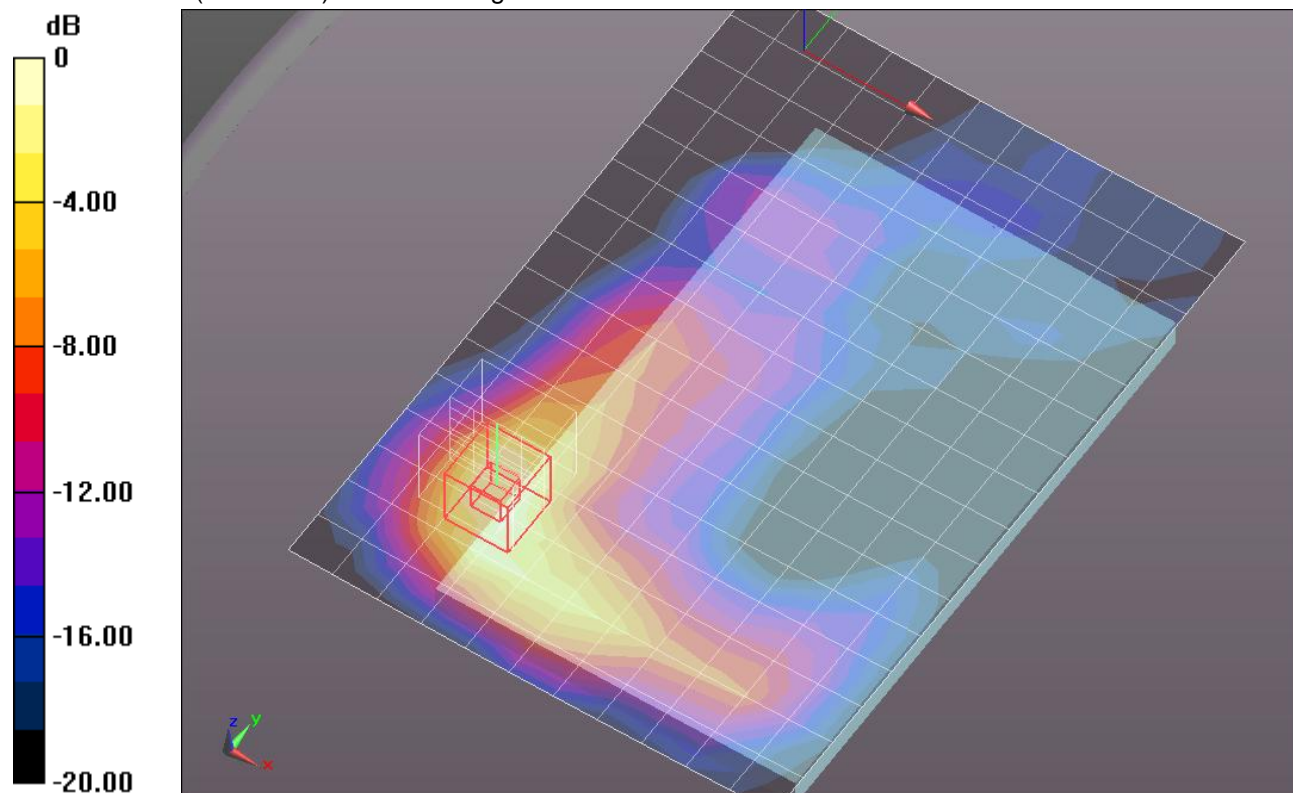
Reference Value = 10.860 V/m; Power Drift = 0.01 dB

Peak SAR (extrapolated) = 0.3670

SAR(1 g) = 0.186 mW/g; SAR(10 g) = 0.096 mW/g

[Info: Interpolated medium parameters used for SAR evaluation.](#)

Maximum value of SAR (measured) = 0.256 mW/g



0 dB = 0.260mW/g = -11.70 dB mW/g

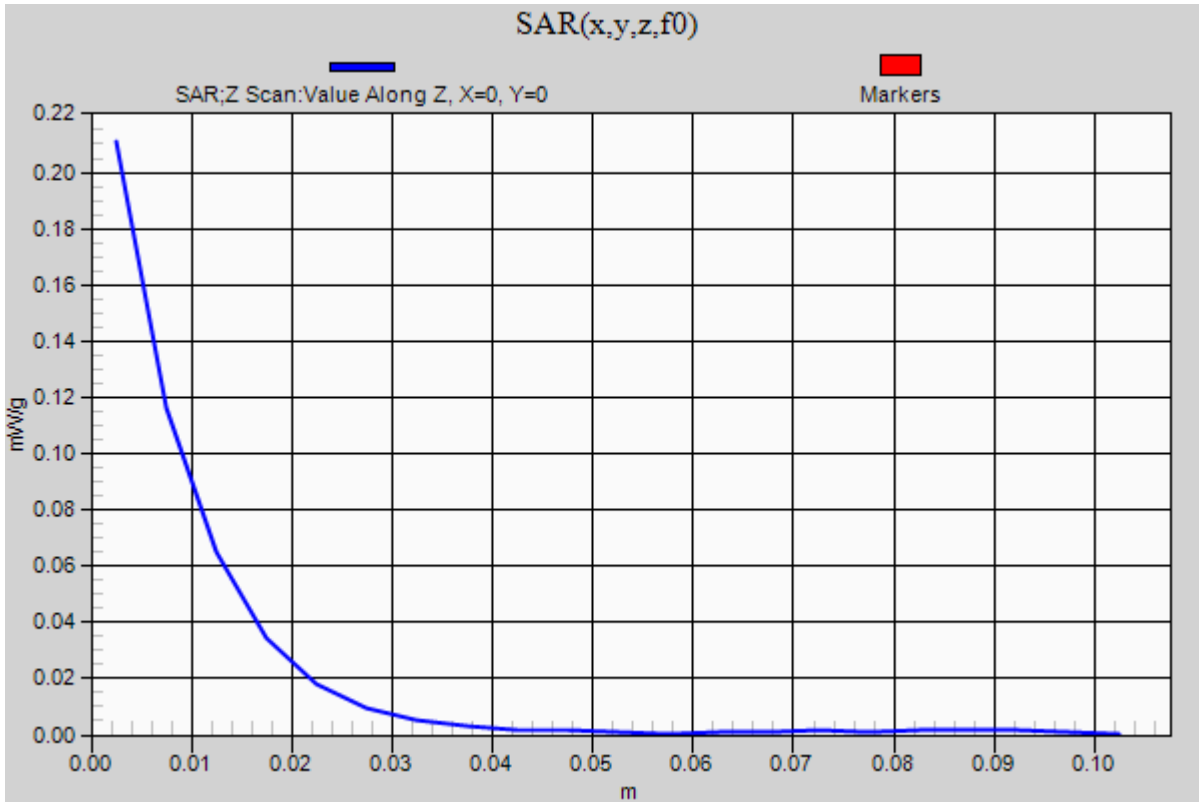
WiFi 2.4GHz Band

Frequency: 2437 MHz; Duty Cycle: 1:1

Flat Phantom/802.11b, ch 6/Z Scan (1x1x21): Measurement grid: dx=20mm, dy=20mm, dz=5mm

Info: [Interpolated medium parameters used for SAR evaluation.](#)

Maximum value of SAR (measured) = 0.211 mW/g



WiFi 2.4GHz Band

Frequency: 2437 MHz; Duty Cycle: 1:1; Room Ambient Temperature: 24.0°C; Liquid Temperature: 23.0°C
Medium parameters used (interpolated): $f = 2437$ MHz; $\sigma = 1.916$ mho/m; $\epsilon_r = 50.552$; $\rho = 1000$ kg/m³

DASY5 Configuration:

- Electronics: DAE4 Sn1259; Calibrated: 2/13/2012
- Probe: EX3DV3 - SN3531; ConvF(7.44, 7.44, 7.44); Calibrated: 12/19/2011
- Sensor-Surface: 2.5mm (Mechanical Surface Detection)
- Phantom: ELI v5.0 (A); Type: QDOVA001BB; Serial: 1120

Rear/802.11b, ch 6/Area Scan (13x18x1): Measurement grid: dx=15mm, dy=15mm

[Info: Interpolated medium parameters used for SAR evaluation.](#)

Maximum value of SAR (measured) = 0.471 mW/g

Rear/802.11b, ch 6/Zoom Scan (5x5x7)/Cube 0: Measurement grid: dx=8mm, dy=8mm, dz=5mm

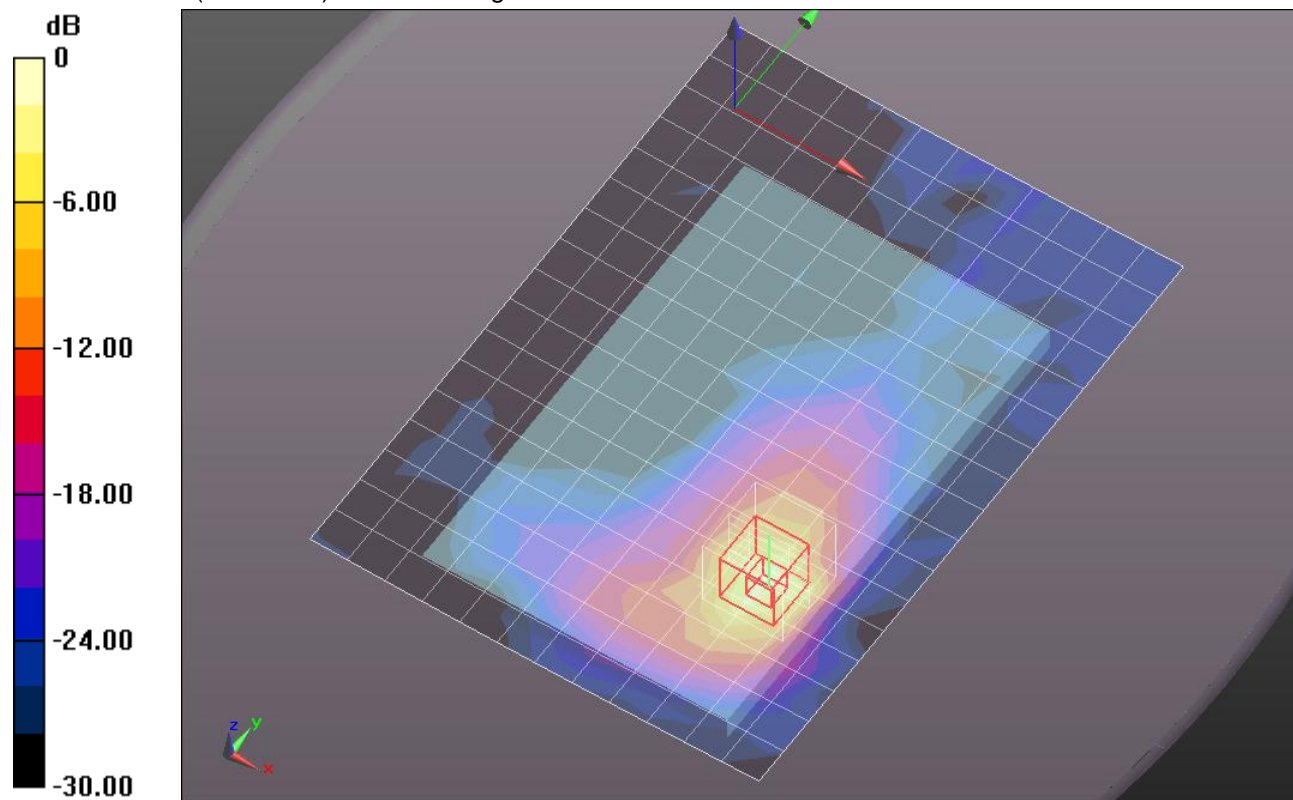
Reference Value = 15.915 V/m; Power Drift = 0.07 dB

Peak SAR (extrapolated) = 1.3600

SAR(1 g) = 0.503 mW/g; SAR(10 g) = 0.205 mW/g

[Info: Interpolated medium parameters used for SAR evaluation.](#)

Maximum value of SAR (measured) = 0.842 mW/g



0 dB = 0.840mW/g = -1.51 dB mW/g

WiFi 2.4GHz Band

Frequency: 2437 MHz; Duty Cycle: 1:1; Room Ambient Temperature: 24.0°C; Liquid Temperature: 23.0°C
Medium parameters used (interpolated): $f = 2437$ MHz; $\sigma = 1.916$ mho/m; $\epsilon_r = 50.552$; $\rho = 1000$ kg/m³

DASY5 Configuration:

- Electronics: DAE4 Sn1259; Calibrated: 2/13/2012
- Probe: EX3DV3 - SN3531; ConvF(7.44, 7.44, 7.44); Calibrated: 12/19/2011
- Sensor-Surface: 2.5mm (Mechanical Surface Detection (Locations From Previous Scan Used)), Sensor-Surface: 2.5mm (Mechanical Surface Detection)
- Phantom: ELI v5.0 (A); Type: QDOVA001BB; Serial: 1120

Rear/802.11b, ch 6_headset/Area Scan (13x18x1): Measurement grid: dx=15mm, dy=15mm

[Info: Interpolated medium parameters used for SAR evaluation.](#)

Maximum value of SAR (measured) = 0.490 mW/g

Rear/802.11b, ch 6_headset/Zoom Scan (5x5x7)/Cube 0: Measurement grid: dx=8mm, dy=8mm, dz=5mm

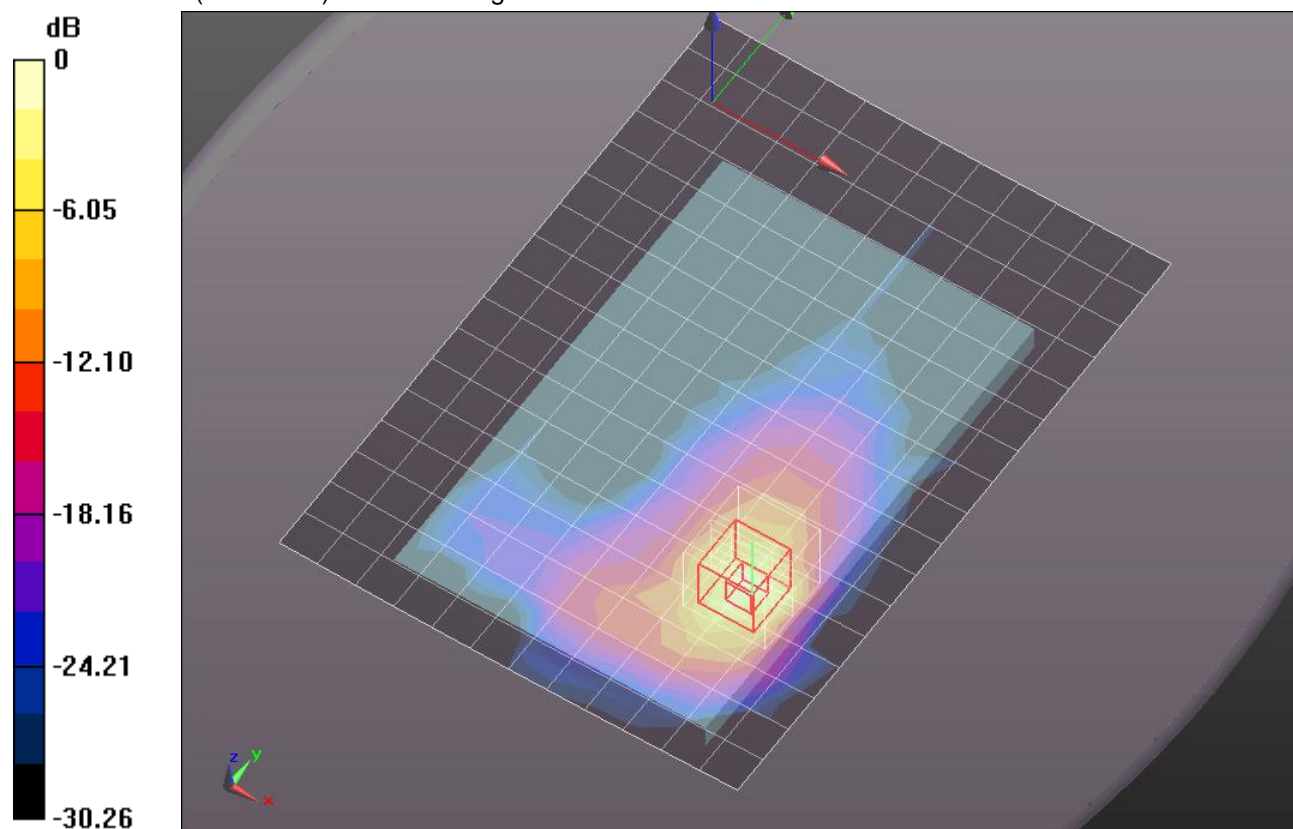
Reference Value = 16.007 V/m; Power Drift = 0.05 dB

Peak SAR (extrapolated) = 1.3770

SAR(1 g) = 0.507 mW/g; SAR(10 g) = 0.205 mW/g

[Info: Interpolated medium parameters used for SAR evaluation.](#)

Maximum value of SAR (measured) = 0.845 mW/g



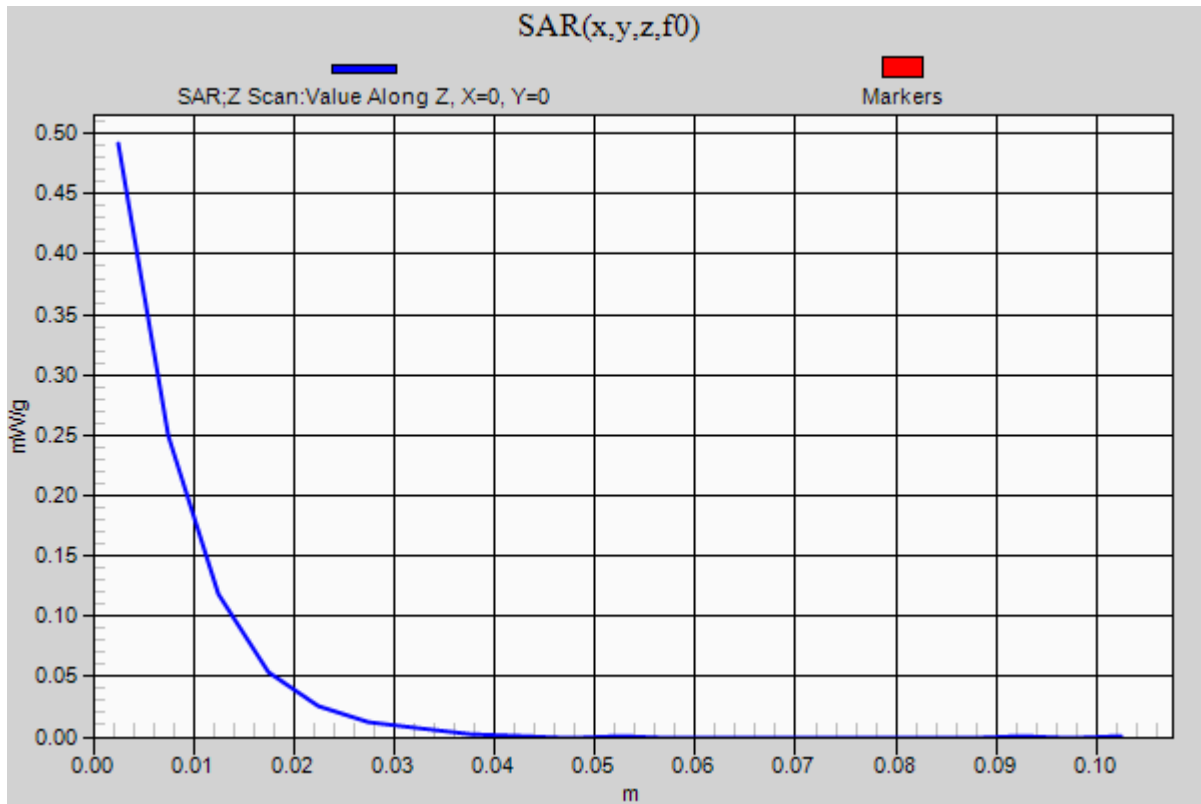
WiFi 2.4GHz Band

Frequency: 2437 MHz; Duty Cycle: 1:1

Rear/802.11b, ch 6_headset/Z Scan (1x1x21): Measurement grid: dx=20mm, dy=20mm, dz=5mm

Info: [Interpolated medium parameters used for SAR evaluation.](#)

Maximum value of SAR (measured) = 0.492 mW/g



WiFi 2.4GHz Band

Frequency: 2437 MHz; Duty Cycle: 1:1; Room Ambient Temperature: 24.0°C; Liquid Temperature: 23.0°C
Medium parameters used (interpolated): $f = 2437$ MHz; $\sigma = 1.916$ mho/m; $\epsilon_r = 50.552$; $\rho = 1000$ kg/m³

DASY5 Configuration:

- Electronics: DAE4 Sn1259; Calibrated: 2/13/2012
- Probe: EX3DV3 - SN3531; ConvF(7.44, 7.44, 7.44); Calibrated: 12/19/2011
- Sensor-Surface: 2.5mm (Mechanical Surface Detection)
- Phantom: ELI v5.0 (A); Type: QDOVA001BB; Serial: 1120

Edge 4/802.11b, ch 6/Area Scan (9x16x1): Measurement grid: dx=15mm, dy=15mm

[Info: Interpolated medium parameters used for SAR evaluation.](#)

Maximum value of SAR (measured) = 0.453 mW/g

Edge 4/802.11b, ch 6/Zoom Scan (5x5x7)/Cube 0: Measurement grid: dx=8mm, dy=8mm, dz=5mm

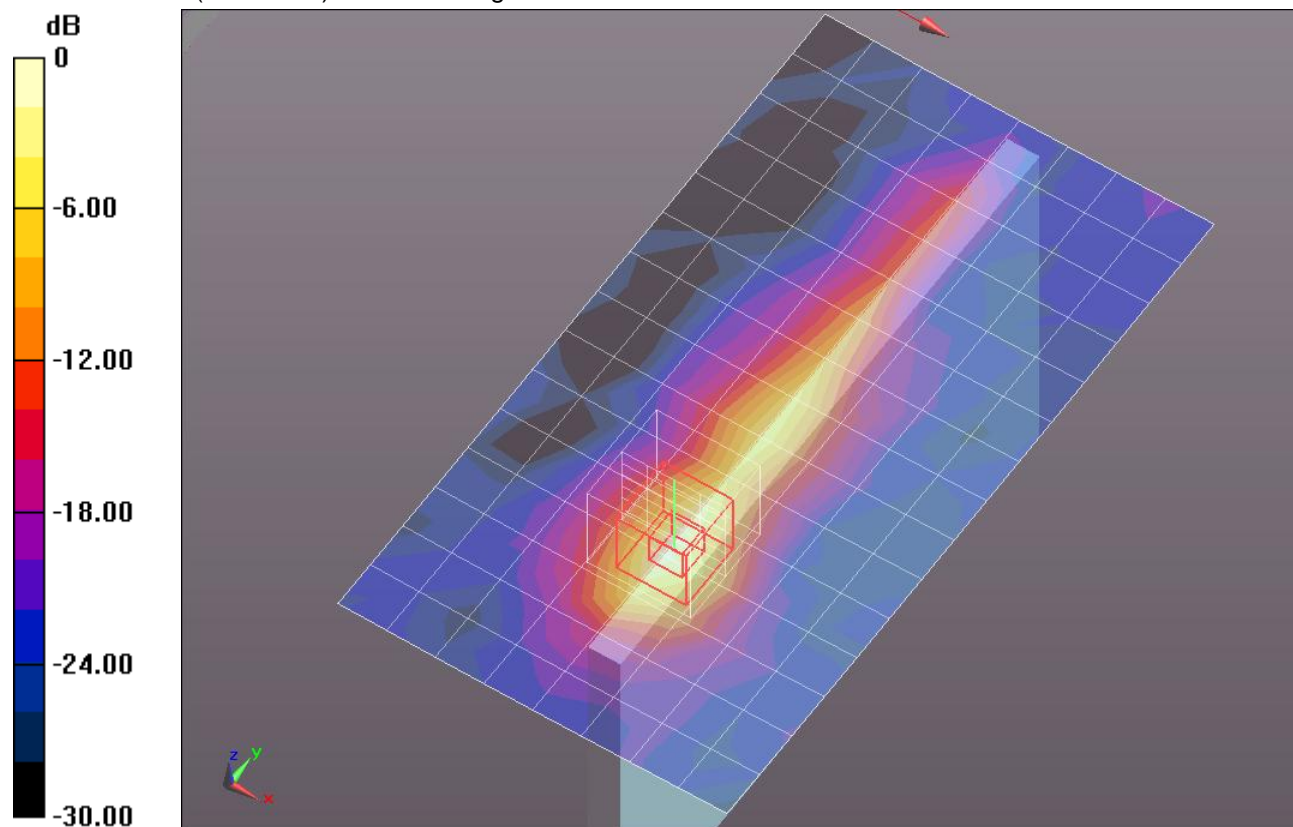
Reference Value = 15.432 V/m; Power Drift = -0.17 dB

Peak SAR (extrapolated) = 0.7450

SAR(1 g) = 0.335 mW/g; SAR(10 g) = 0.140 mW/g

[Info: Interpolated medium parameters used for SAR evaluation.](#)

Maximum value of SAR (measured) = 0.501 mW/g



0 dB = 0.500mW/g = -6.02 dB mW/g

WiFi 2.4GHz Band

Frequency: 2437 MHz; Duty Cycle: 1:1; Room Ambient Temperature: 24.0°C; Liquid Temperature: 23.0°C
Medium parameters used (interpolated): $f = 2437$ MHz; $\sigma = 1.916$ mho/m; $\epsilon_r = 50.552$; $\rho = 1000$ kg/m³

DASY5 Configuration:

- Electronics: DAE4 Sn1259; Calibrated: 2/13/2012
- Probe: EX3DV3 - SN3531; ConvF(7.44, 7.44, 7.44); Calibrated: 12/19/2011
- Sensor-Surface: 2.5mm (Mechanical Surface Detection)
- Phantom: ELI v5.0 (A); Type: QDOVA001BB; Serial: 1120

Edge 4 @ 45 degree/802.11b_Ch 6/Area Scan (11x18x1): Measurement grid: dx=15mm, dy=15mm

[Info: Interpolated medium parameters used for SAR evaluation.](#)

Maximum value of SAR (measured) = 0.278 mW/g

Edge 4 @ 45 degree/802.11b_Ch 6/Zoom Scan (5x5x7)/Cube 0: Measurement grid: dx=8mm, dy=8mm, dz=5mm

Reference Value = 12.193 V/m; Power Drift = -0.07 dB

Peak SAR (extrapolated) = 0.5000

SAR(1 g) = 0.179 mW/g; SAR(10 g) = 0.074 mW/g

[Info: Interpolated medium parameters used for SAR evaluation.](#)

Maximum value of SAR (measured) = 0.303 mW/g

