

WiFi 2.4GHz Band

Frequency: 2437 MHz; Duty Cycle: 1:1; Room Ambient Temperature: 24.0°C; Liquid Temperature: 23.0°C
Medium parameters used (interpolated): $f = 2437$ MHz; $\sigma = 1.776$ mho/m; $\epsilon_r = 38.253$; $\rho = 1000$ kg/m³
DASY5 Configuration:

- Electronics: DAE4 Sn1259; Calibrated: 2/13/2012
- Probe: EX3DV3 - SN3531; ConvF(7.4, 7.4, 7.4); Calibrated: 12/19/2011
- Sensor-Surface: 2.5mm (Mechanical Surface Detection)
- Phantom: ELI v5.0 (A); Type: QDOVA001BB; Serial: 1120

Flat Phantom/802.11b, ch 6/Area Scan (12x17x1): Measurement grid: dx=15mm, dy=15mm

[Info: Interpolated medium parameters used for SAR evaluation.](#)

Maximum value of SAR (measured) = 0.061 mW/g

Flat Phantom/802.11b, ch 6/Zoom Scan (5x5x7)/Cube 0: Measurement grid: dx=8mm, dy=8mm, dz=5mm

Reference Value = 6.090 V/m; Power Drift = 0.09 dB

Peak SAR (extrapolated) = 0.1010

SAR(1 g) = 0.054 mW/g; SAR(10 g) = 0.026 mW/g

[Info: Interpolated medium parameters used for SAR evaluation.](#)

Maximum value of SAR (measured) = 0.073 mW/g

Flat Phantom/802.11b, ch 6/Zoom Scan (5x5x7)/Cube 1: Measurement grid: dx=8mm, dy=8mm, dz=5mm

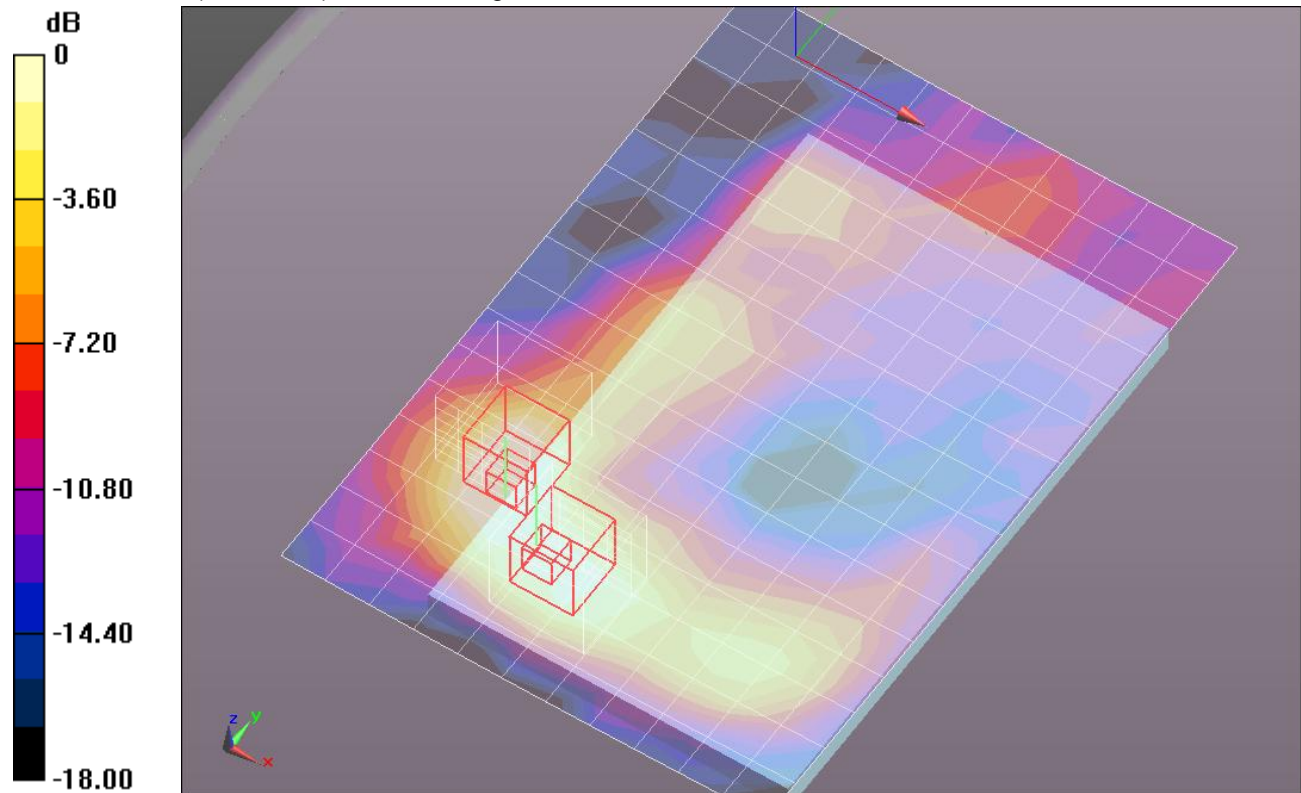
Reference Value = 6.090 V/m; Power Drift = 0.09 dB

Peak SAR (extrapolated) = 0.0700

SAR(1 g) = 0.040 mW/g; SAR(10 g) = 0.022 mW/g

[Info: Interpolated medium parameters used for SAR evaluation.](#)

Maximum value of SAR (measured) = 0.053 mW/g



0 dB = 0.050mW/g = -26.02 dB mW/g

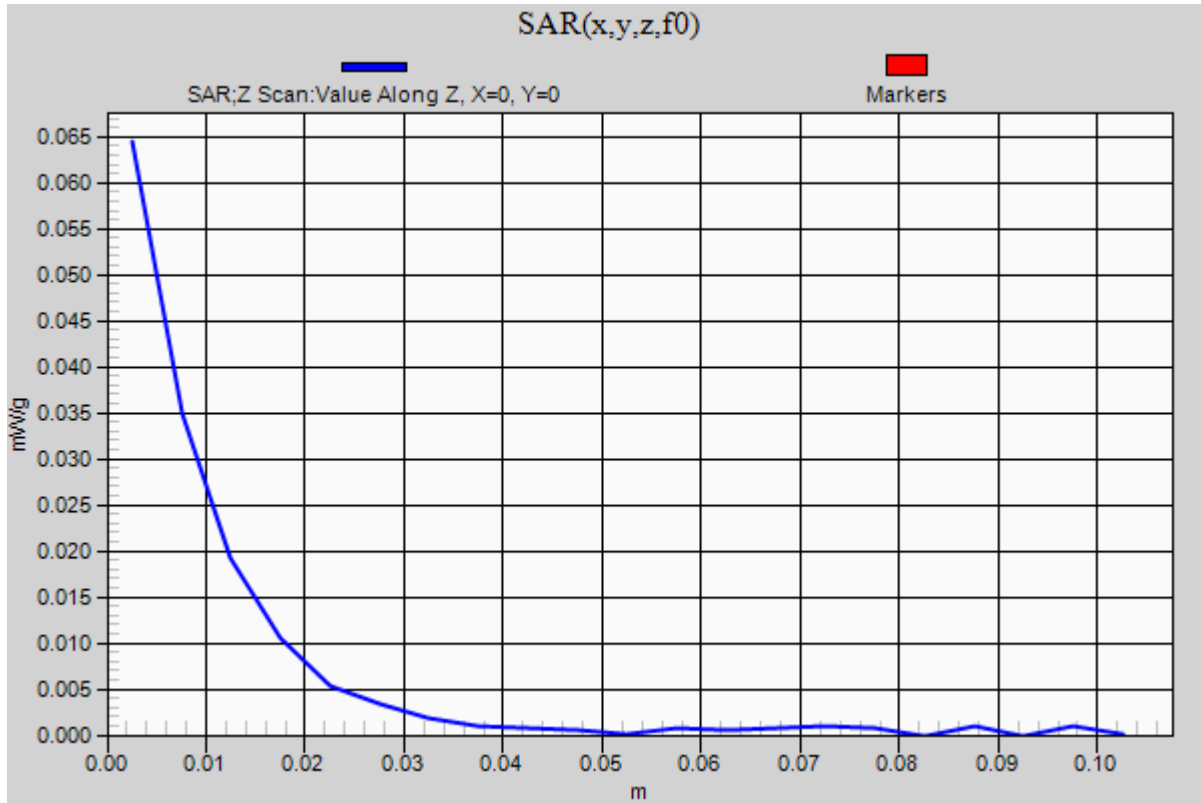
WiFi 2.4GHz Band

Frequency: 2437 MHz; Duty Cycle: 1:1

Flat Phantom/802.11b, ch 6/Z Scan (1x1x21): Measurement grid: dx=20mm, dy=20mm, dz=5mm

Info: [Interpolated medium parameters used for SAR evaluation.](#)

Maximum value of SAR (measured) = 0.064 mW/g



WiFi 2.4GHz Band

Frequency: 2437 MHz; Duty Cycle: 1:1; Room Ambient Temperature: 24.0°C; Liquid Temperature: 23.0°C
Medium parameters used (interpolated): $f = 2437$ MHz; $\sigma = 1.972$ mho/m; $\epsilon_r = 51.259$; $\rho = 1000$ kg/m³
DASY5 Configuration:

- Electronics: DAE4 Sn1259; Calibrated: 2/13/2012
- Probe: EX3DV3 - SN3531; ConvF(7.44, 7.44, 7.44); Calibrated: 12/19/2011
- Sensor-Surface: 2.5mm (Mechanical Surface Detection)
- Phantom: ELI v5.0 (B); Type: QDOVA001BB; Serial: 1118

Rear/802.11b, ch 6/Area Scan (13x18x1): Measurement grid: dx=15mm, dy=15mm

[Info: Interpolated medium parameters used for SAR evaluation.](#)

Maximum value of SAR (measured) = 0.573 mW/g

Rear/802.11b, ch 6/Zoom Scan (5x5x7)/Cube 0: Measurement grid: dx=8mm, dy=8mm, dz=5mm

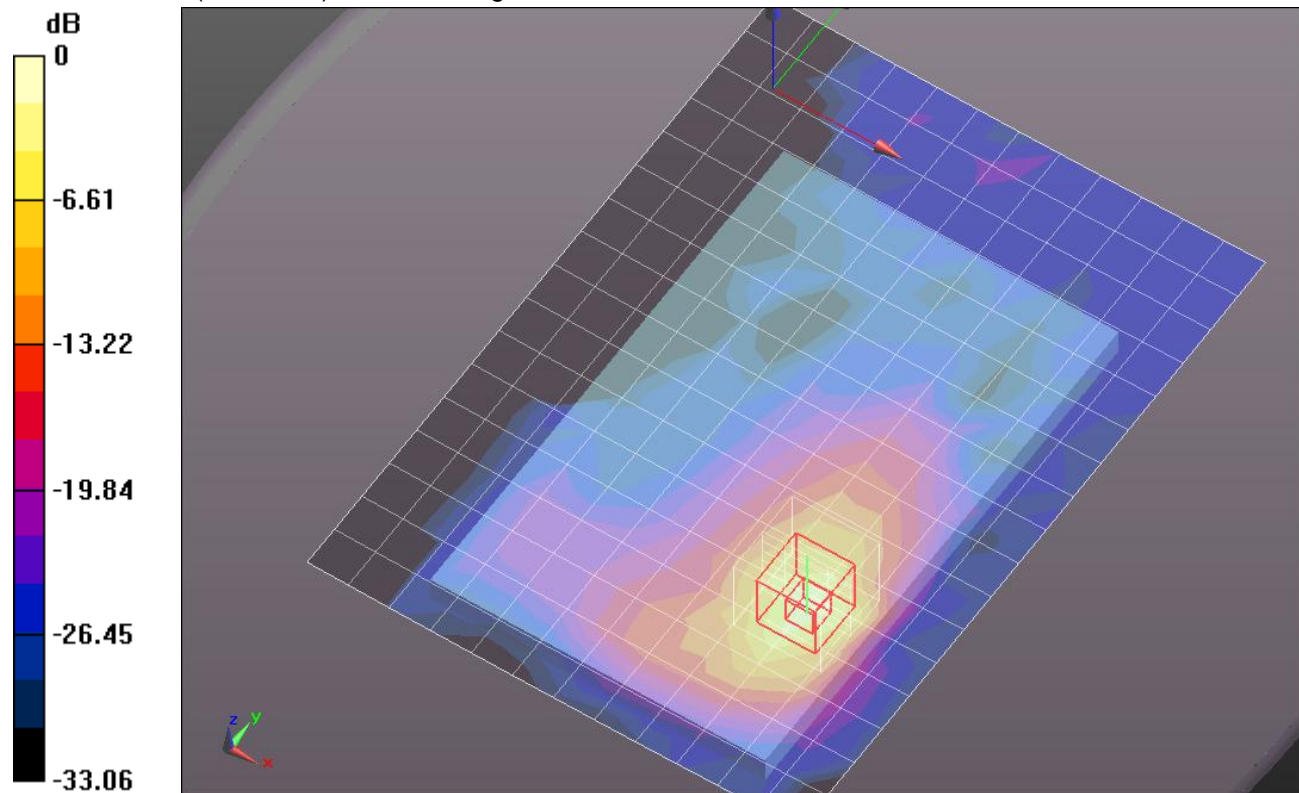
Reference Value = 17.178 V/m; Power Drift = -0.05 dB

Peak SAR (extrapolated) = 1.5510

SAR(1 g) = 0.563 mW/g; SAR(10 g) = 0.225 mW/g

[Info: Interpolated medium parameters used for SAR evaluation.](#)

Maximum value of SAR (measured) = 0.959 mW/g



0 dB = 0.960mW/g = -0.35 dB mW/g

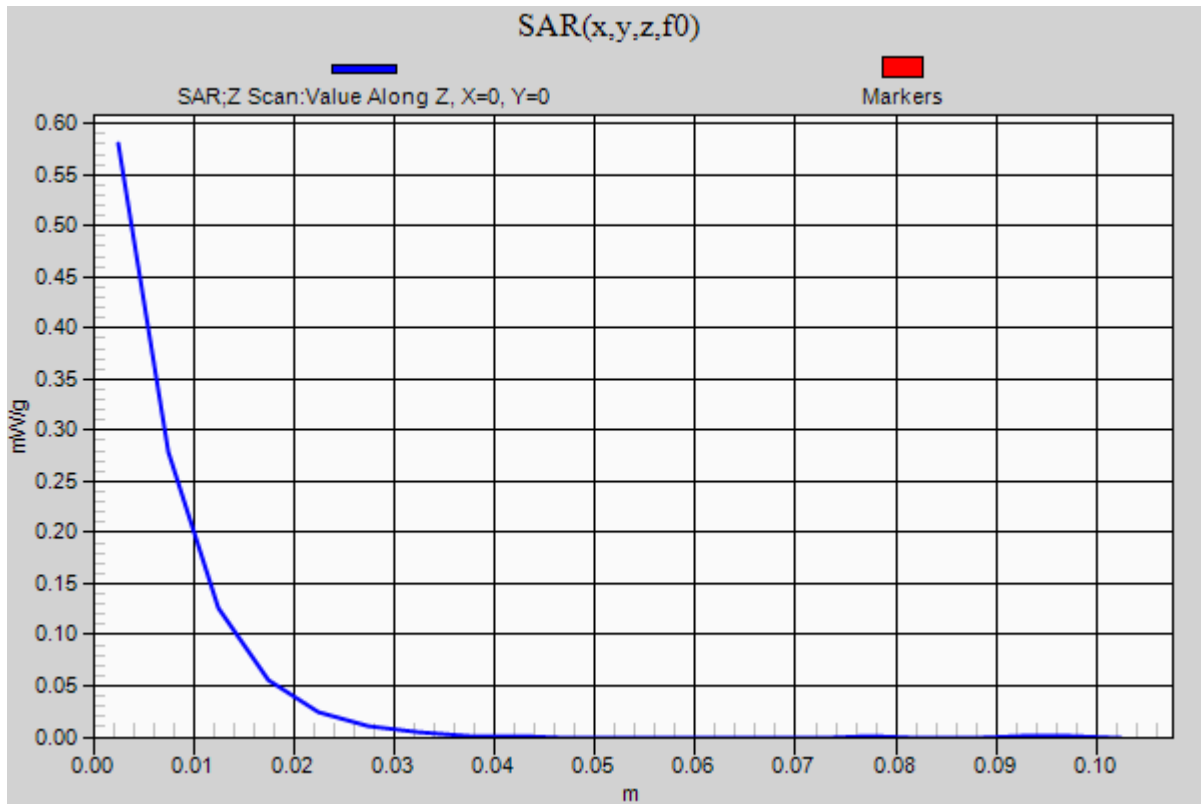
WiFi 2.4GHz Band

Frequency: 2437 MHz; Duty Cycle: 1:1

Rear/802.11b, ch 6/Z Scan (1x1x21): Measurement grid: dx=20mm, dy=20mm, dz=5mm

Info: [Interpolated medium parameters used for SAR evaluation.](#)

Maximum value of SAR (measured) = 0.580 mW/g



WiFi 2.4GHz Band

Frequency: 2437 MHz; Duty Cycle: 1:1; Room Ambient Temperature: 24.0°C; Liquid Temperature: 23.0°C
Medium parameters used (interpolated): $f = 2437$ MHz; $\sigma = 1.972$ mho/m; $\epsilon_r = 51.259$; $\rho = 1000$ kg/m³
DASY5 Configuration:

- Electronics: DAE4 Sn1259; Calibrated: 2/13/2012
- Probe: EX3DV3 - SN3531; ConvF(7.44, 7.44, 7.44); Calibrated: 12/19/2011
- Sensor-Surface: 2.5mm (Mechanical Surface Detection)
- Phantom: ELI v5.0 (B); Type: QDOVA001BB; Serial: 1118

Rear/802.11b, ch 6_headset/Area Scan (13x18x1): Measurement grid: dx=15mm, dy=15mm

[Info: Interpolated medium parameters used for SAR evaluation.](#)

Maximum value of SAR (measured) = 0.556 mW/g

Rear/802.11b, ch 6_headset/Zoom Scan (5x5x7)/Cube 0: Measurement grid: dx=8mm, dy=8mm, dz=5mm

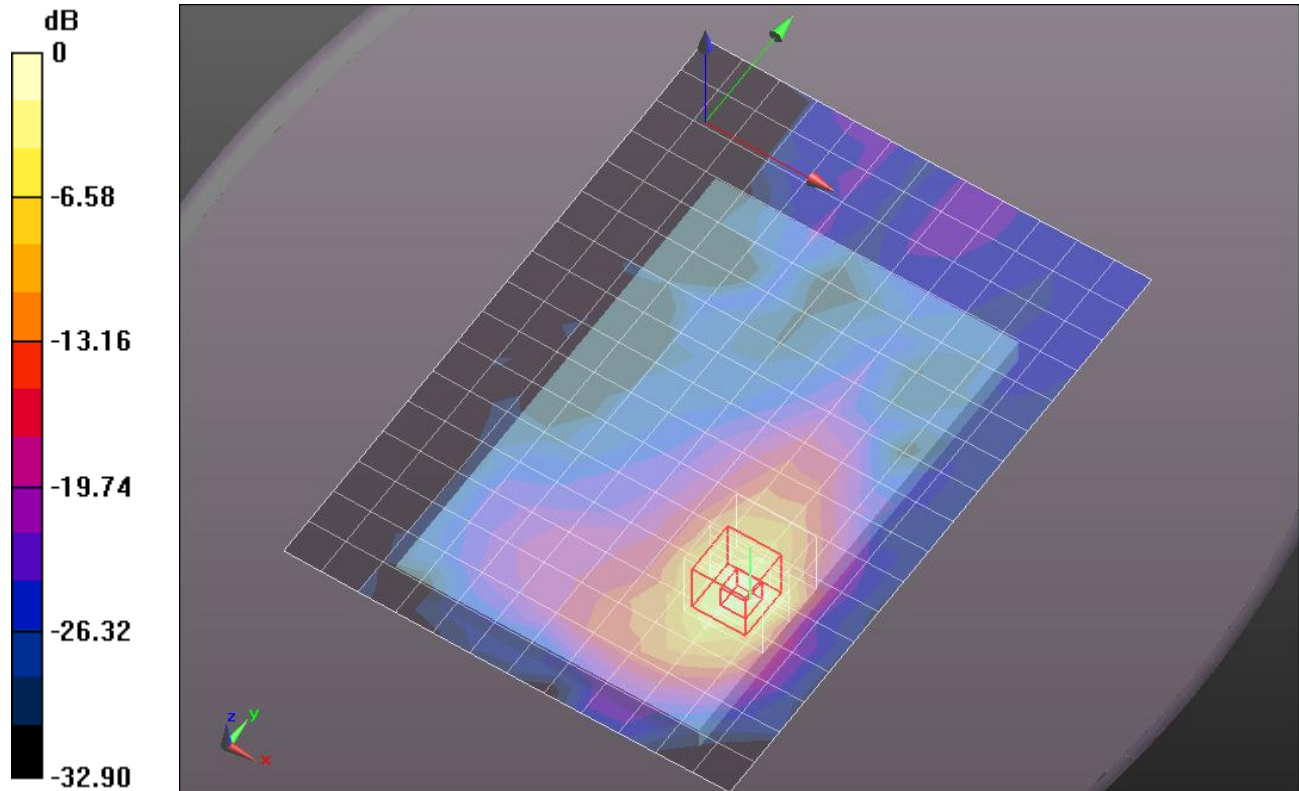
Reference Value = 16.819 V/m; Power Drift = -0.05 dB

Peak SAR (extrapolated) = 1.5290

SAR(1 g) = 0.550 mW/g; SAR(10 g) = 0.220 mW/g

[Info: Interpolated medium parameters used for SAR evaluation.](#)

Maximum value of SAR (measured) = 0.899 mW/g



0 dB = 0.900mW/g = -0.92 dB mW/g

WiFi 2.4GHz Band

Frequency: 2437 MHz; Duty Cycle: 1:1; Room Ambient Temperature: 24.0°C; Liquid Temperature: 23.0°C
Medium parameters used (interpolated): $f = 2437$ MHz; $\sigma = 1.972$ mho/m; $\epsilon_r = 51.259$; $\rho = 1000$ kg/m³
DASY5 Configuration:

- Electronics: DAE4 Sn1259; Calibrated: 2/13/2012
- Probe: EX3DV3 - SN3531; ConvF(7.44, 7.44, 7.44); Calibrated: 12/19/2011
- Sensor-Surface: 2.5mm (Mechanical Surface Detection)
- Phantom: ELI v5.0 (B); Type: QDOVA001BB; Serial: 1118

Edge 4/802.11b, ch 6/Area Scan (9x14x1): Measurement grid: dx=15mm, dy=15mm

[Info: Interpolated medium parameters used for SAR evaluation.](#)

Maximum value of SAR (measured) = 0.464 mW/g

Edge 4/802.11b, ch 6/Zoom Scan (5x5x7)/Cube 0: Measurement grid: dx=8mm, dy=8mm, dz=5mm

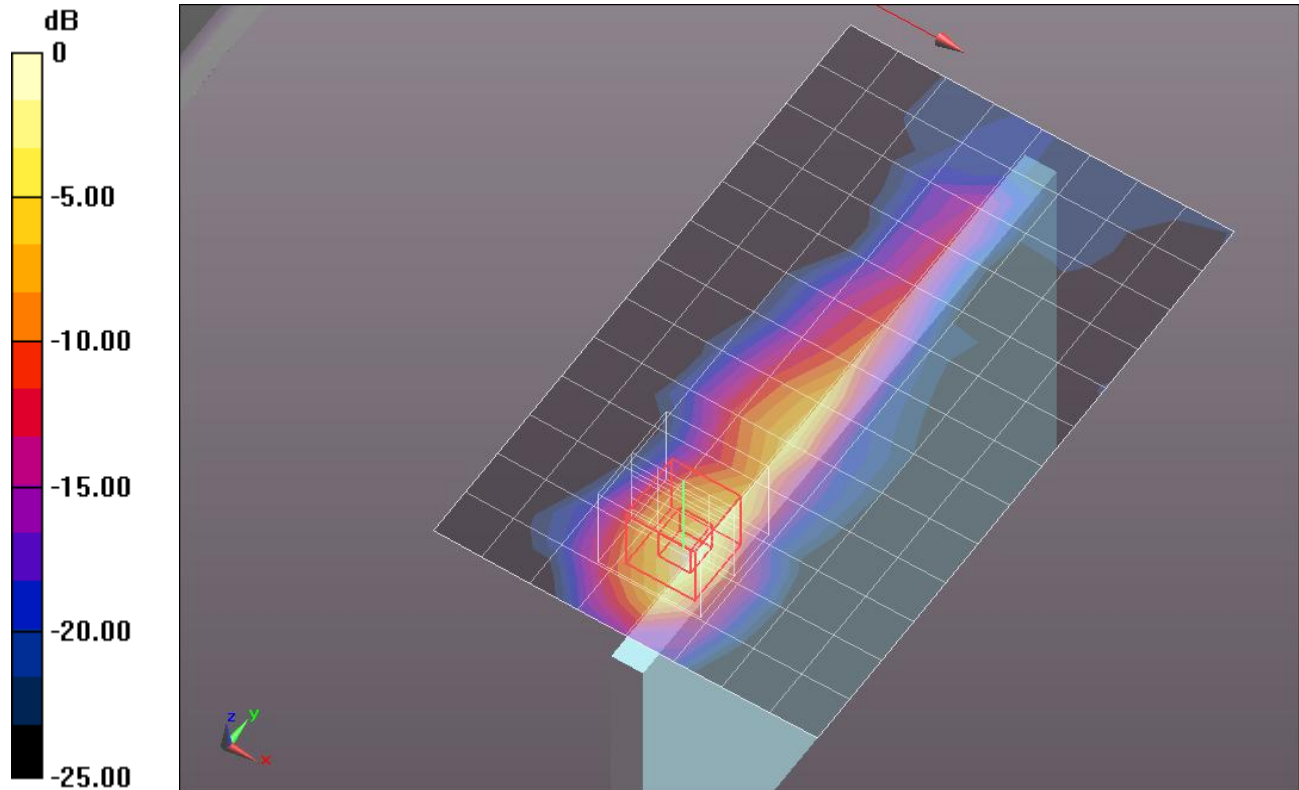
Reference Value = 15.341 V/m; Power Drift = 0.10 dB

Peak SAR (extrapolated) = 0.8260

SAR(1 g) = 0.362 mW/g; SAR(10 g) = 0.150 mW/g

[Info: Interpolated medium parameters used for SAR evaluation.](#)

Maximum value of SAR (measured) = 0.543 mW/g



0 dB = 0.540mW/g = -5.35 dB mW/g

WiFi 2.4GHz Band

Frequency: 2437 MHz; Duty Cycle: 1:1; Room Ambient Temperature: 24.0°C; Liquid Temperature: 23.0°C
Medium parameters used (interpolated): $f = 2437$ MHz; $\sigma = 1.972$ mho/m; $\epsilon_r = 51.259$; $\rho = 1000$ kg/m³
DASY5 Configuration:

- Electronics: DAE4 Sn1259; Calibrated: 2/13/2012
- Probe: EX3DV3 - SN3531; ConvF(7.44, 7.44, 7.44); Calibrated: 12/19/2011
- Sensor-Surface: 2.5mm (Mechanical Surface Detection)
- Phantom: ELI v5.0 (B); Type: QDOVA001BB; Serial: 1118

Edge 4 @ 45 degree/802.11b_Ch 6/Area Scan (11x18x1): Measurement grid: dx=15mm, dy=15mm

[Info: Interpolated medium parameters used for SAR evaluation.](#)

Maximum value of SAR (measured) = 0.239 mW/g

Edge 4 @ 45 degree/802.11b_Ch 6/Zoom Scan (5x5x7)/Cube 0: Measurement grid: dx=8mm, dy=8mm, dz=5mm

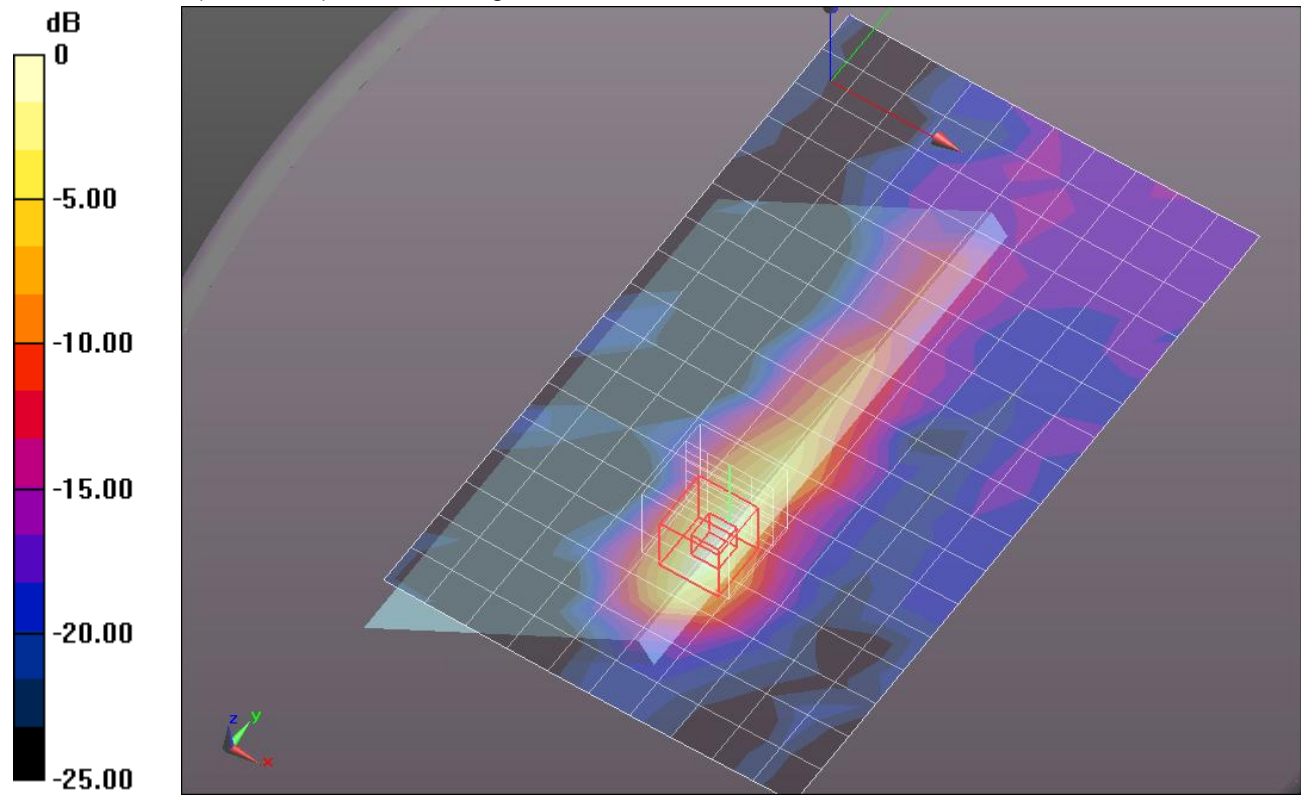
Reference Value = 10.984 V/m; Power Drift = 0.0061 dB

Peak SAR (extrapolated) = 0.3970

SAR(1 g) = 0.152 mW/g; SAR(10 g) = 0.068 mW/g

[Info: Interpolated medium parameters used for SAR evaluation.](#)

Maximum value of SAR (measured) = 0.235 mW/g



0 dB = 0.240mW/g = -12.40 dB mW/g