

WCDMA UMTS Band II

Frequency: 1880 MHz; Duty Cycle: 1:1; Room Ambient Temperature: 24.0°C; Liquid Temperature: 23.0°C

Medium parameters used: $f = 1880$ MHz; $\sigma = 1.375$ mho/m; $\epsilon_r = 39.898$; $\rho = 1000$ kg/m³

DASY5 Configuration:

- Electronics: DAE4 Sn1259; Calibrated: 2/13/2012
- Probe: EX3DV3 - SN3531; ConvF(8.53, 8.53, 8.53); Calibrated: 12/19/2011
- Sensor-Surface: 2.5mm (Mechanical Surface Detection)
- Phantom: SAM; Type: QD000P40CD; Serial: 1629

Left/Touch_Rel99_Ch 9400/Area Scan (12x16x1): Measurement grid: dx=15mm, dy=15mm

Maximum value of SAR (measured) = 0.463 mW/g

Left/Touch_Rel99_Ch 9400/Zoom Scan (5x5x7)/Cube 0: Measurement grid: dx=8mm, dy=8mm,

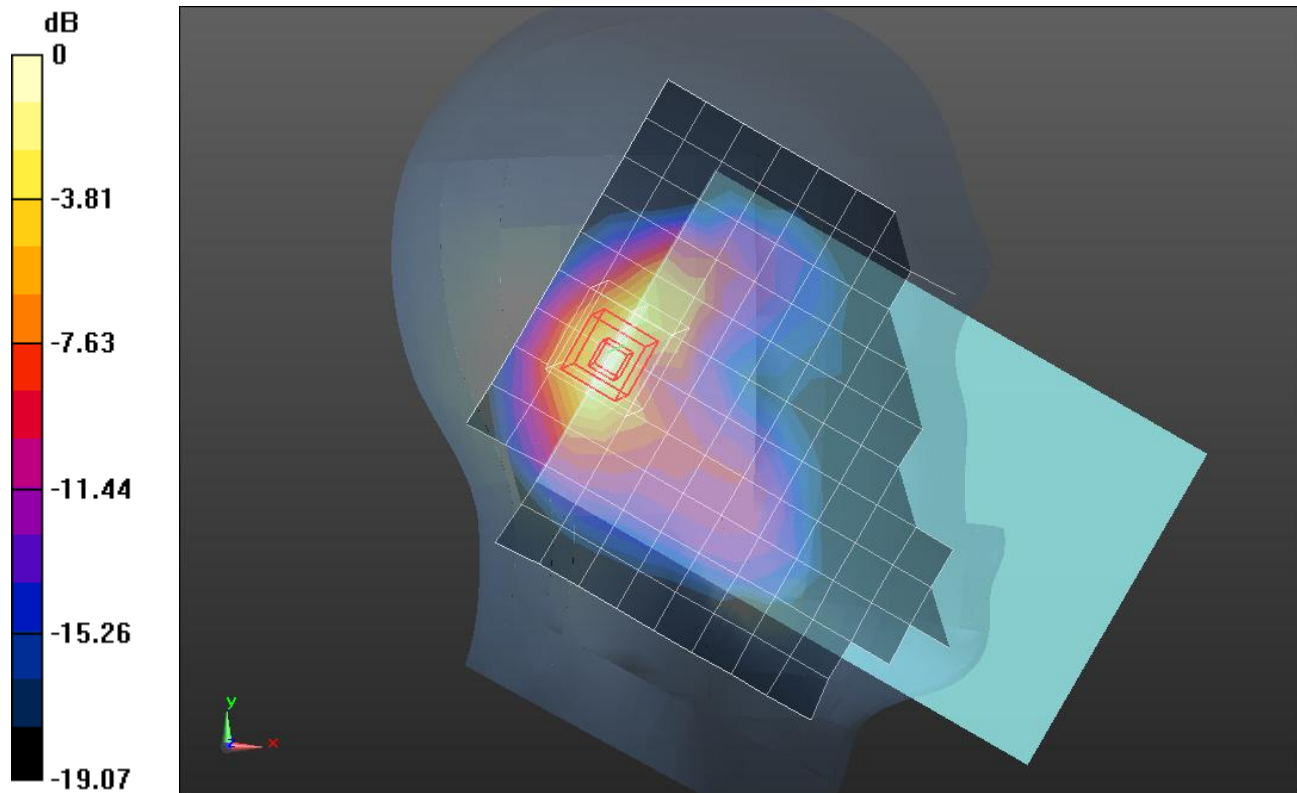
dz=5mm

Reference Value = 18.519 V/m; Power Drift = -0.0087 dB

Peak SAR (extrapolated) = 0.6530

SAR(1 g) = 0.353 mW/g; SAR(10 g) = 0.176 mW/g

Maximum value of SAR (measured) = 0.461 mW/g



0 dB = 0.460mW/g = -6.74 dB mW/g

WCDMA UMTS Band II

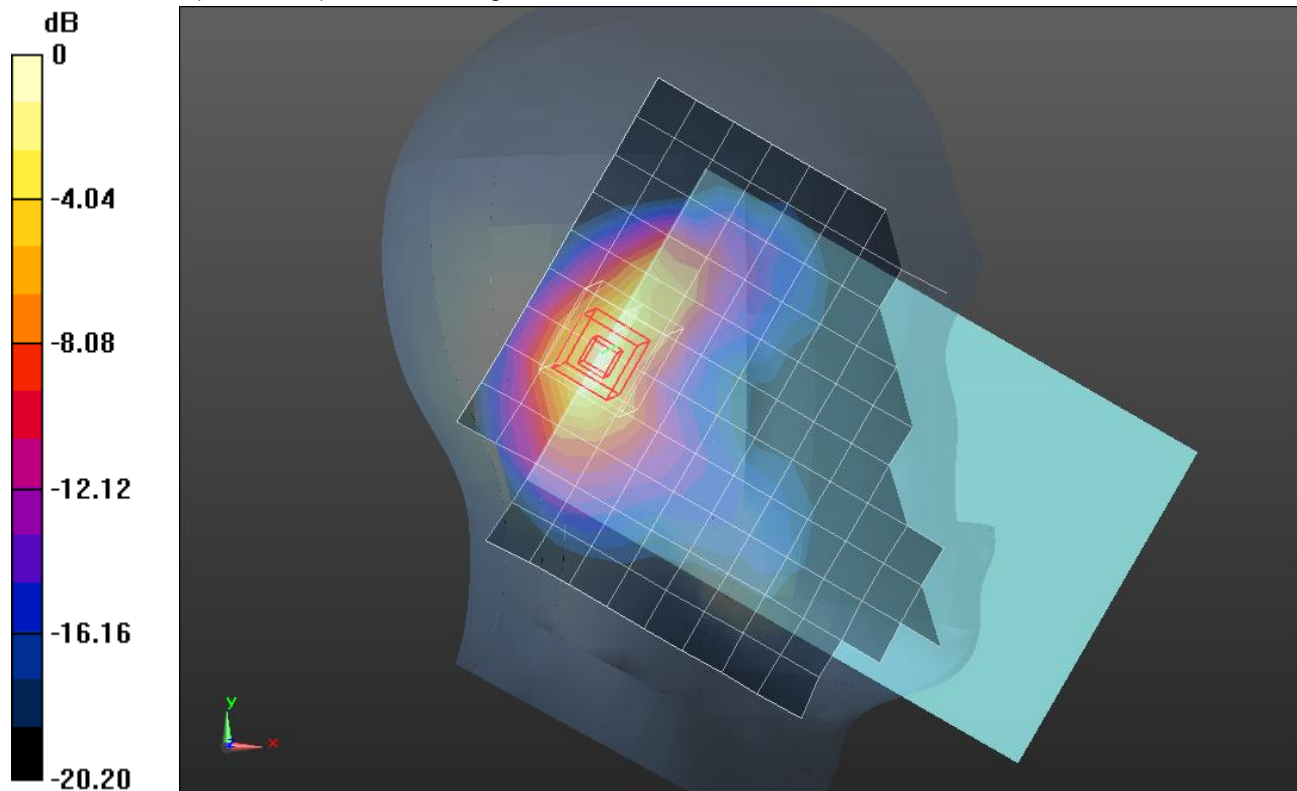
Frequency: 1880 MHz; Duty Cycle: 1:1; Room Ambient Temperature: 24.0°C; Liquid Temperature: 23.0°C
Medium parameters used: $f = 1880$ MHz; $\sigma = 1.375$ mho/m; $\epsilon_r = 39.898$; $\rho = 1000$ kg/m³

DASY5 Configuration:

- Electronics: DAE4 Sn1259; Calibrated: 2/13/2012
- Probe: EX3DV3 - SN3531; ConvF(8.53, 8.53, 8.53); Calibrated: 12/19/2011
- Sensor-Surface: 2.5mm (Mechanical Surface Detection)
- Phantom: SAM; Type: QD000P40CD; Serial: 1629

Left/Tilt_Rel99_Ch 9400/Area Scan (12x16x1): Measurement grid: dx=15mm, dy=15mm
Maximum value of SAR (measured) = 0.474 mW/g

Left/Tilt_Rel99_Ch 9400/Zoom Scan (5x5x7)/Cube 0: Measurement grid: dx=8mm, dy=8mm, dz=5mm
Reference Value = 18.787 V/m; Power Drift = -0.02 dB
Peak SAR (extrapolated) = 0.6620
SAR(1 g) = 0.365 mW/g; SAR(10 g) = 0.182 mW/g
Maximum value of SAR (measured) = 0.491 mW/g



0 dB = 0.490mW/g = -6.20 dB mW/g

WCDMA UMTS Band II

Frequency: 1880 MHz; Duty Cycle: 1:1; Room Ambient Temperature: 24.0°C; Liquid Temperature: 23.0°C
Medium parameters used: $f = 1880$ MHz; $\sigma = 1.375$ mho/m; $\epsilon_r = 39.898$; $\rho = 1000$ kg/m³

DASY5 Configuration:

- Electronics: DAE4 Sn1259; Calibrated: 2/13/2012
- Probe: EX3DV3 - SN3531; ConvF(8.53, 8.53, 8.53); Calibrated: 12/19/2011
- Sensor-Surface: 2.5mm (Mechanical Surface Detection)
- Phantom: SAM; Type: QD000P40CD; Serial: 1629

Right/Touch_Rel99_Ch 9400/Area Scan (12x16x1): Measurement grid: dx=15mm, dy=15mm
Maximum value of SAR (measured) = 0.705 mW/g

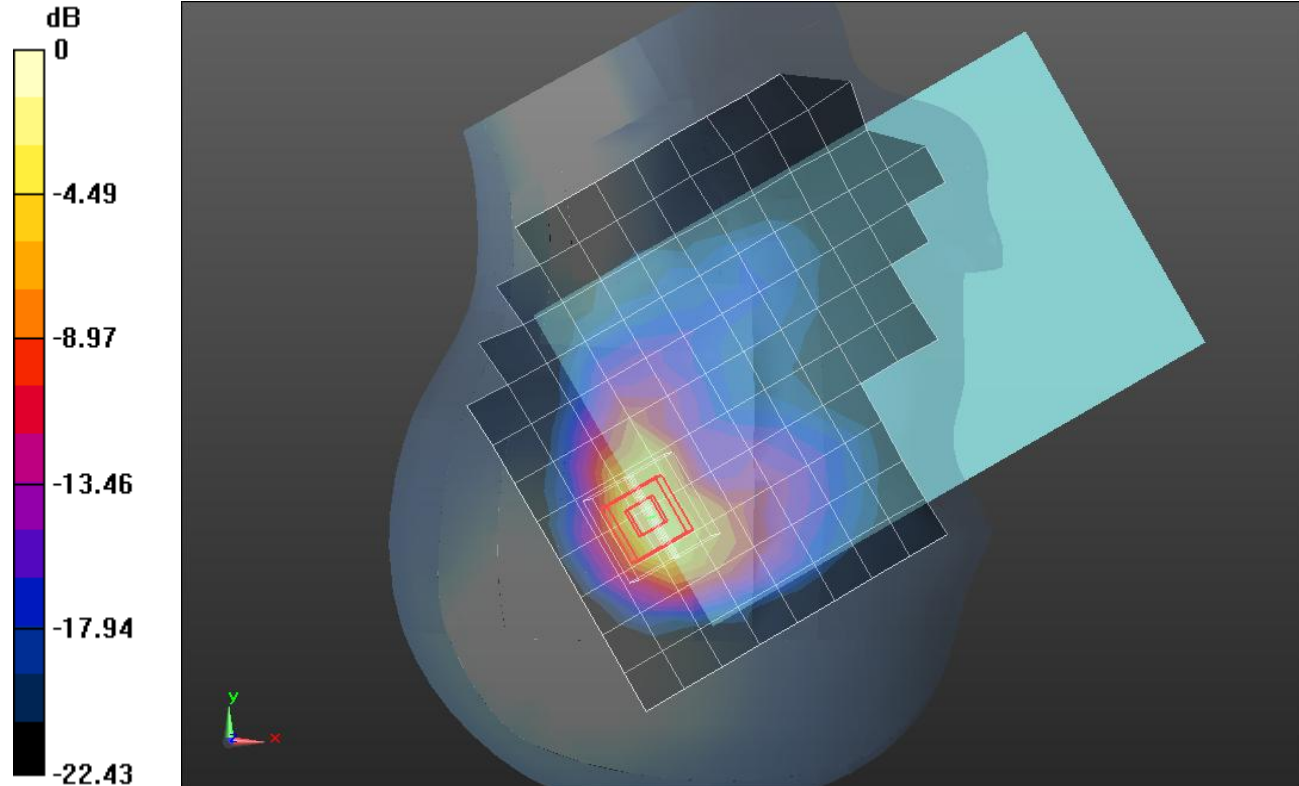
Right/Touch_Rel99_Ch 9400/Zoom Scan (5x5x7)/Cube 0: Measurement grid: dx=8mm, dy=8mm, dz=5mm

Reference Value = 24.220 V/m; Power Drift = -0.04 dB

Peak SAR (extrapolated) = 1.3770

SAR(1 g) = 0.680 mW/g; SAR(10 g) = 0.308 mW/g

Maximum value of SAR (measured) = 0.964 mW/g



0 dB = 0.960mW/g = -0.35 dB mW/g

WCDMA UMTS Band II

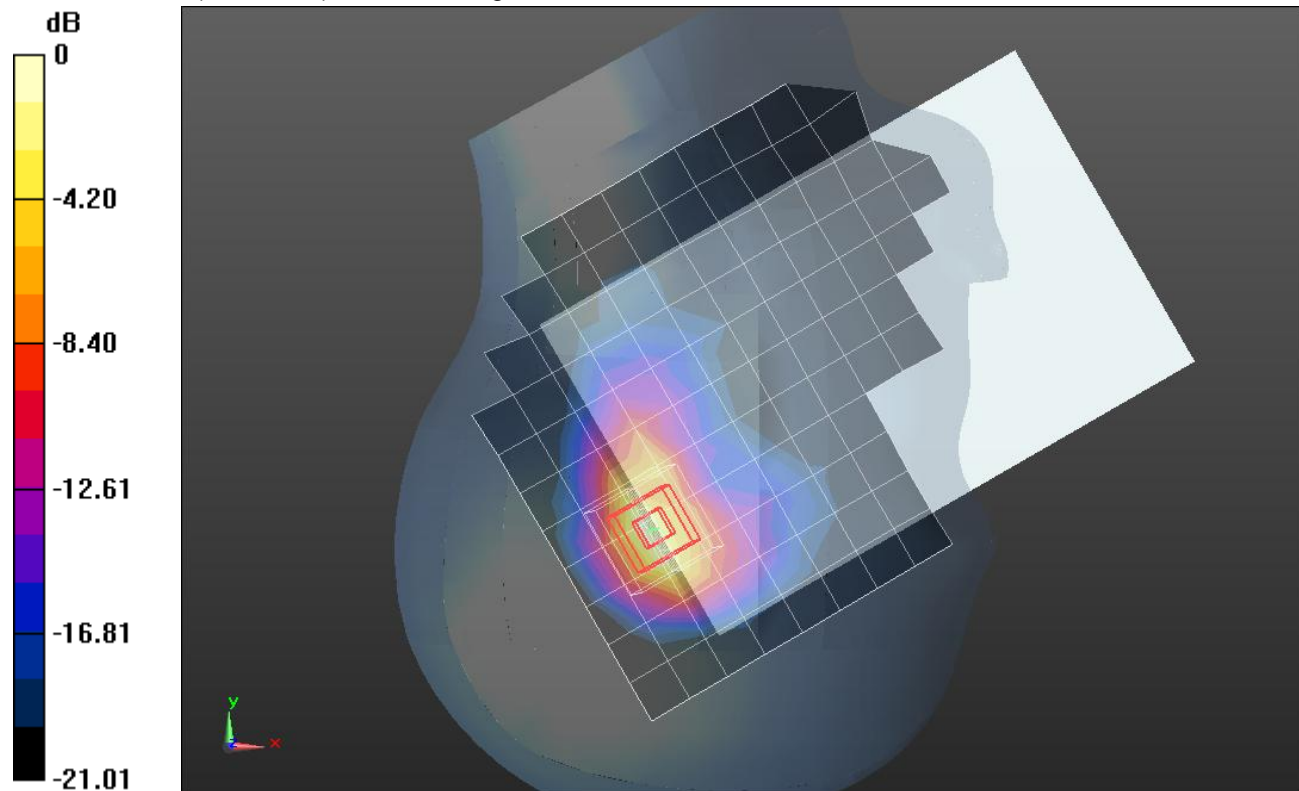
Frequency: 1880 MHz; Duty Cycle: 1:1; Room Ambient Temperature: 24.0°C; Liquid Temperature: 23.0°C
Medium parameters used: $f = 1880$ MHz; $\sigma = 1.375$ mho/m; $\epsilon_r = 39.898$; $\rho = 1000$ kg/m³

DASY5 Configuration:

- Electronics: DAE4 Sn1259; Calibrated: 2/13/2012
- Probe: EX3DV3 - SN3531; ConvF(8.53, 8.53, 8.53); Calibrated: 12/19/2011
- Sensor-Surface: 2.5mm (Mechanical Surface Detection)
- Phantom: SAM; Type: QD000P40CD; Serial: 1629

Right/Tilt_Rel99_Ch9400/Area Scan (12x16x1): Measurement grid: dx=15mm, dy=15mm
Maximum value of SAR (measured) = 0.818 mW/g

Right/Tilt_Rel99_Ch9400/Zoom Scan (5x5x7)/Cube 0: Measurement grid: dx=8mm, dy=8mm, dz=5mm
Reference Value = 24.344 V/m; Power Drift = -0.0048 dB
Peak SAR (extrapolated) = 1.3910
SAR(1 g) = 0.693 mW/g; SAR(10 g) = 0.317 mW/g
Maximum value of SAR (measured) = 0.924 mW/g

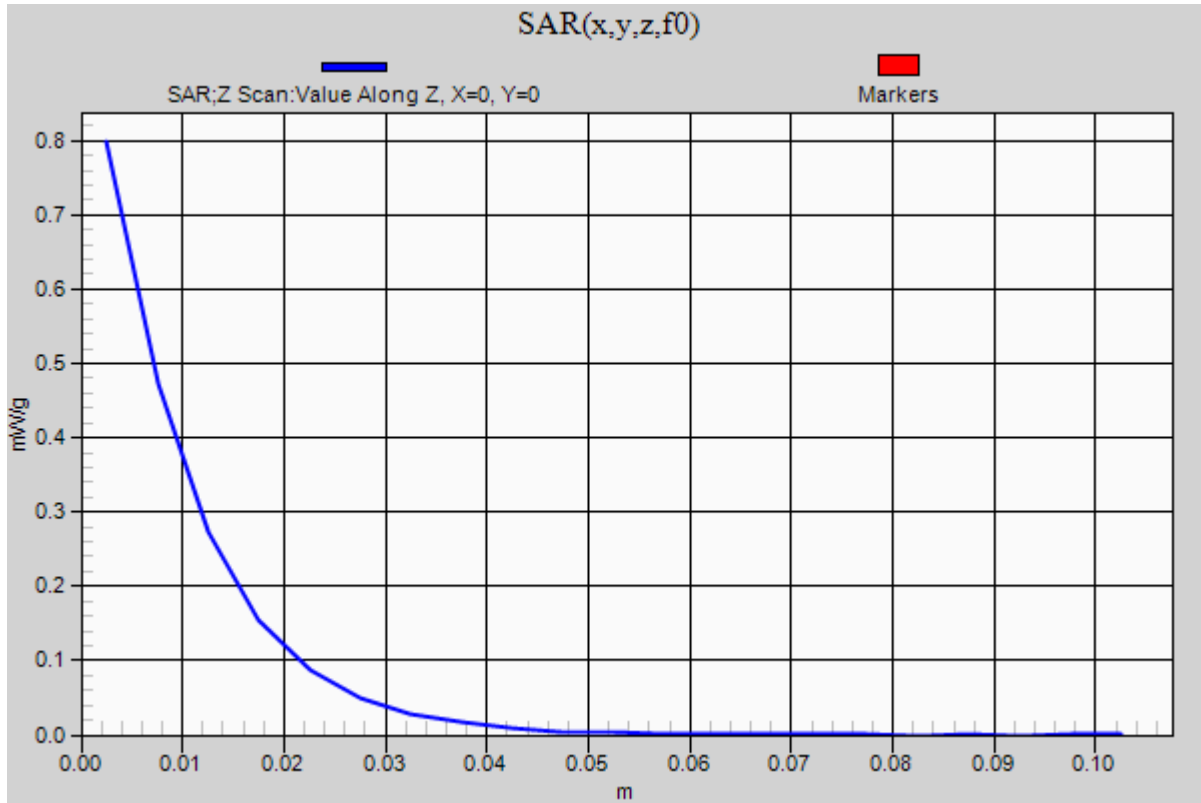


0 dB = 0.920mW/g = -0.72 dB mW/g

WCDMA UMTS Band II

Frequency: 1880 MHz; Duty Cycle: 1:1

Right/Tilt_Rel99_Ch9400/Z Scan (1x1x21): Measurement grid: dx=20mm, dy=20mm, dz=5mm
Maximum value of SAR (measured) = 0.798 mW/g



WCDMA UMTS Band II

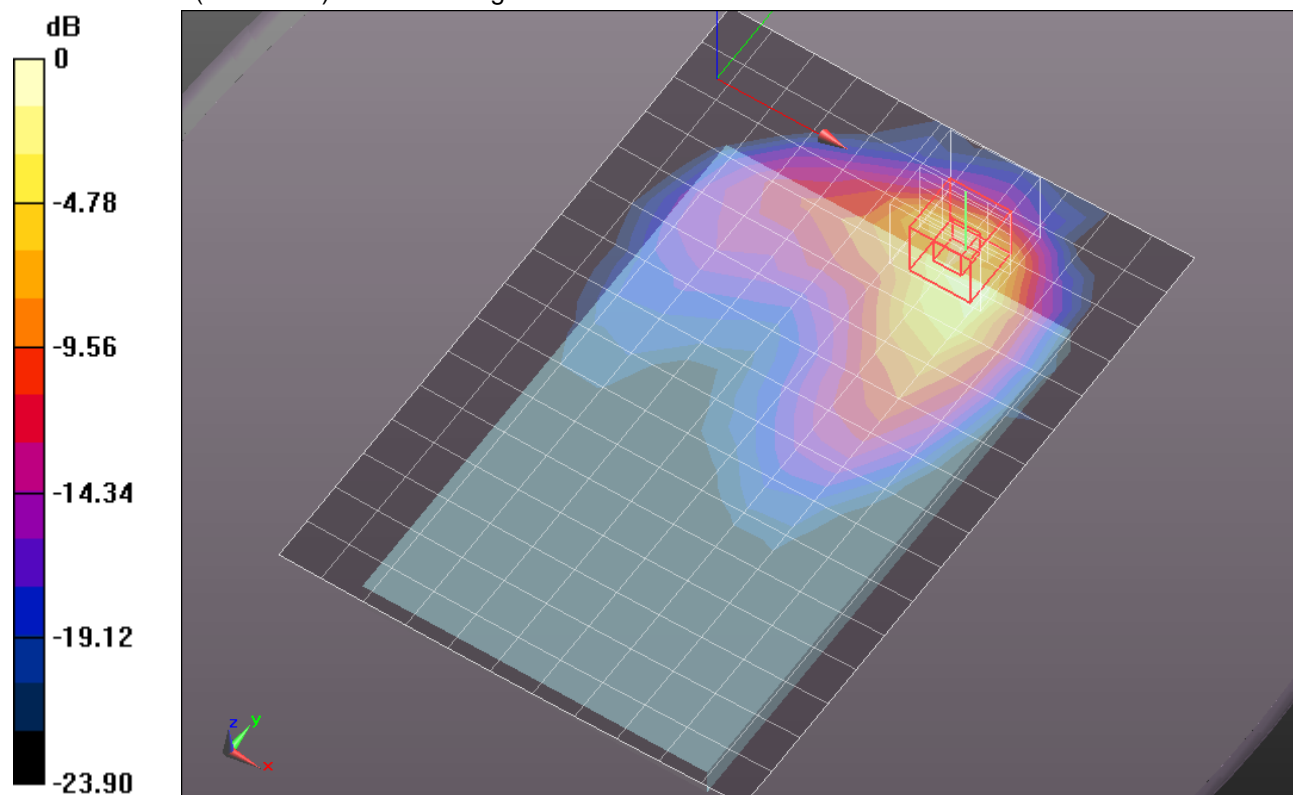
Frequency: 1880 MHz; Duty Cycle: 1:1; Room Ambient Temperature: 24.0°C; Liquid Temperature: 23.0°C
Medium parameters used: $f = 1880$ MHz; $\sigma = 1.488$ mho/m; $\epsilon_r = 53.354$; $\rho = 1000$ kg/m³

DASY5 Configuration:

- Electronics: DAE4 Sn1259; Calibrated: 2/13/2012
- Probe: EX3DV3 - SN3531; ConvF(7.91, 7.91, 7.91); Calibrated: 12/19/2011
- Sensor-Surface: 2.5mm (Mechanical Surface Detection)
- Phantom: ELI v5.0 (A); Type: QDOVA001BB; Serial: 1120

Rear_0mm/R.99_Ch 9400/Area Scan (12x17x1): Measurement grid: dx=15mm, dy=15mm
Maximum value of SAR (measured) = 0.358 mW/g

Rear_0mm/R.99_Ch 9400/Zoom Scan (5x5x7)/Cube 0: Measurement grid: dx=8mm, dy=8mm, dz=5mm
Reference Value = 15.633 V/m; Power Drift = 0.04 dB
Peak SAR (extrapolated) = 0.8210
SAR(1 g) = 0.416 mW/g; SAR(10 g) = 0.193 mW/g
Maximum value of SAR (measured) = 0.551 mW/g



0 dB = 0.550mW/g = -5.19 dB mW/g

WCDMA UMTS Band II

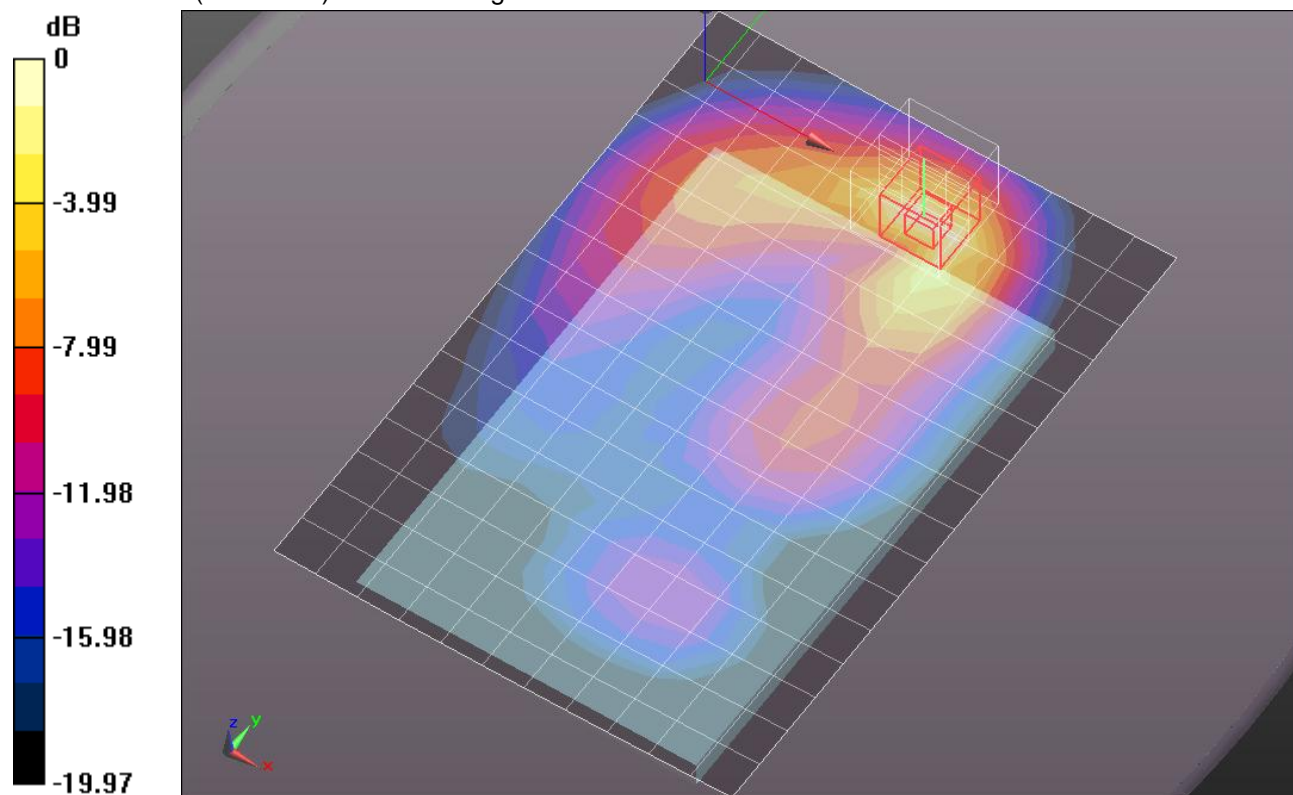
Frequency: 1880 MHz; Duty Cycle: 1:1; Room Ambient Temperature: 24.0°C; Liquid Temperature: 23.0°C
Medium parameters used: $f = 1880$ MHz; $\sigma = 1.488$ mho/m; $\epsilon_r = 53.354$; $\rho = 1000$ kg/m³

DASY5 Configuration:

- Electronics: DAE4 Sn1259; Calibrated: 2/13/2012
- Probe: EX3DV3 - SN3531; ConvF(7.91, 7.91, 7.91); Calibrated: 12/19/2011
- Sensor-Surface: 2.5mm (Mechanical Surface Detection)
- Phantom: ELI v5.0 (A); Type: QDOVA001BB; Serial: 1120

Rear_8mm/R.99_Ch 9400/Area Scan (12x17x1): Measurement grid: dx=15mm, dy=15mm
Maximum value of SAR (measured) = 0.746 mW/g

Rear_8mm/R.99_Ch 9400/Zoom Scan (5x5x7)/Cube 0: Measurement grid: dx=8mm, dy=8mm, dz=5mm
Reference Value = 22.572 V/m; Power Drift = -0.03 dB
Peak SAR (extrapolated) = 1.0360
SAR(1 g) = 0.597 mW/g; SAR(10 g) = 0.309 mW/g
Maximum value of SAR (measured) = 0.761 mW/g

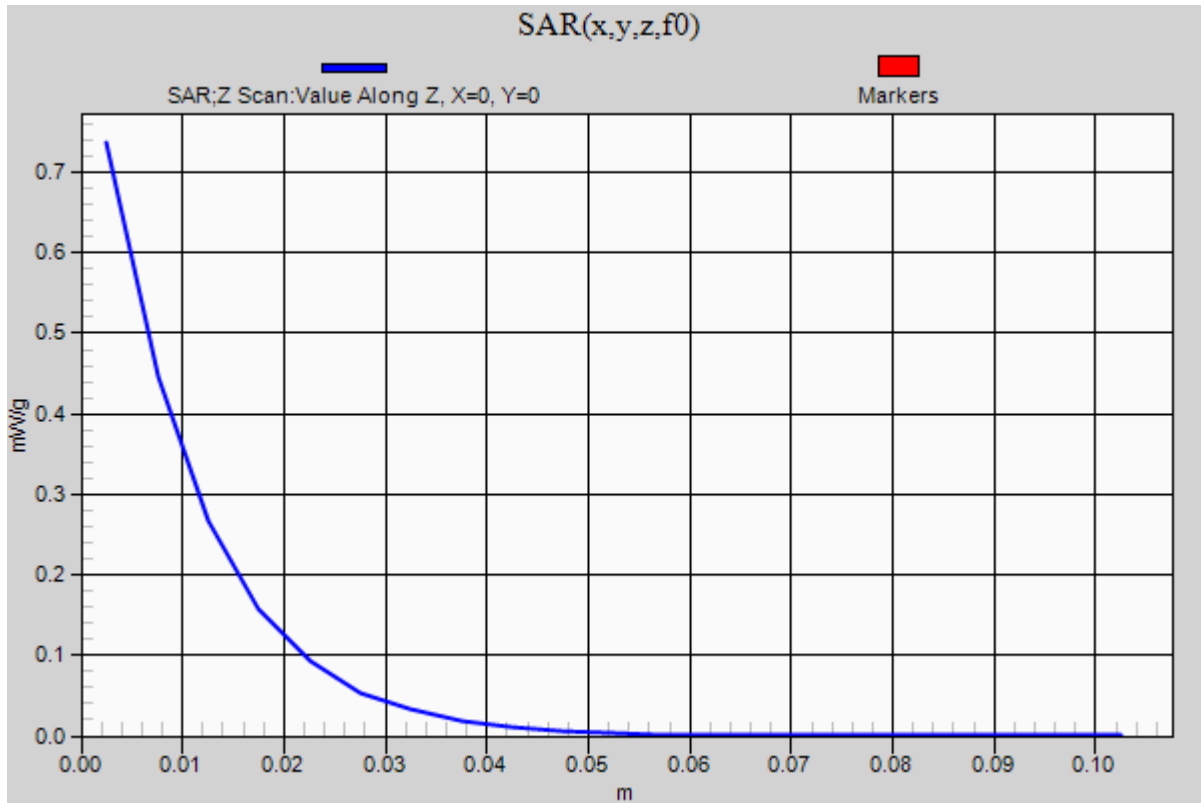


0 dB = 0.760mW/g = -2.38 dB mW/g

WCDMA UMTS Band II

Frequency: 1880 MHz; Duty Cycle: 1:1

Rear_8mm/R.99_Ch 9400/Z Scan (1x1x21): Measurement grid: dx=20mm, dy=20mm, dz=5mm
Maximum value of SAR (measured) = 0.737 mW/g



WCDMA UMTS Band II

Frequency: 1880 MHz; Duty Cycle: 1:1; Room Ambient Temperature: 24.0°C; Liquid Temperature: 23.0°C
Medium parameters used: $f = 1880$ MHz; $\sigma = 1.488$ mho/m; $\epsilon_r = 53.354$; $\rho = 1000$ kg/m³

DASY5 Configuration:

- Electronics: DAE4 Sn1259; Calibrated: 2/13/2012
- Probe: EX3DV3 - SN3531; ConvF(7.91, 7.91, 7.91); Calibrated: 12/19/2011
- Sensor-Surface: 2.5mm (Mechanical Surface Detection (Locations From Previous Scan Used)), Sensor-Surface: 2.5mm (Mechanical Surface Detection)
- Phantom: ELI v5.0 (A); Type: QDOVA001BB; Serial: 1120

Rear_8mm/R.99_Ch 9400 w/Headset/Area Scan (12x17x1): Measurement grid: dx=15mm, dy=15mm
Maximum value of SAR (measured) = 0.678 mW/g

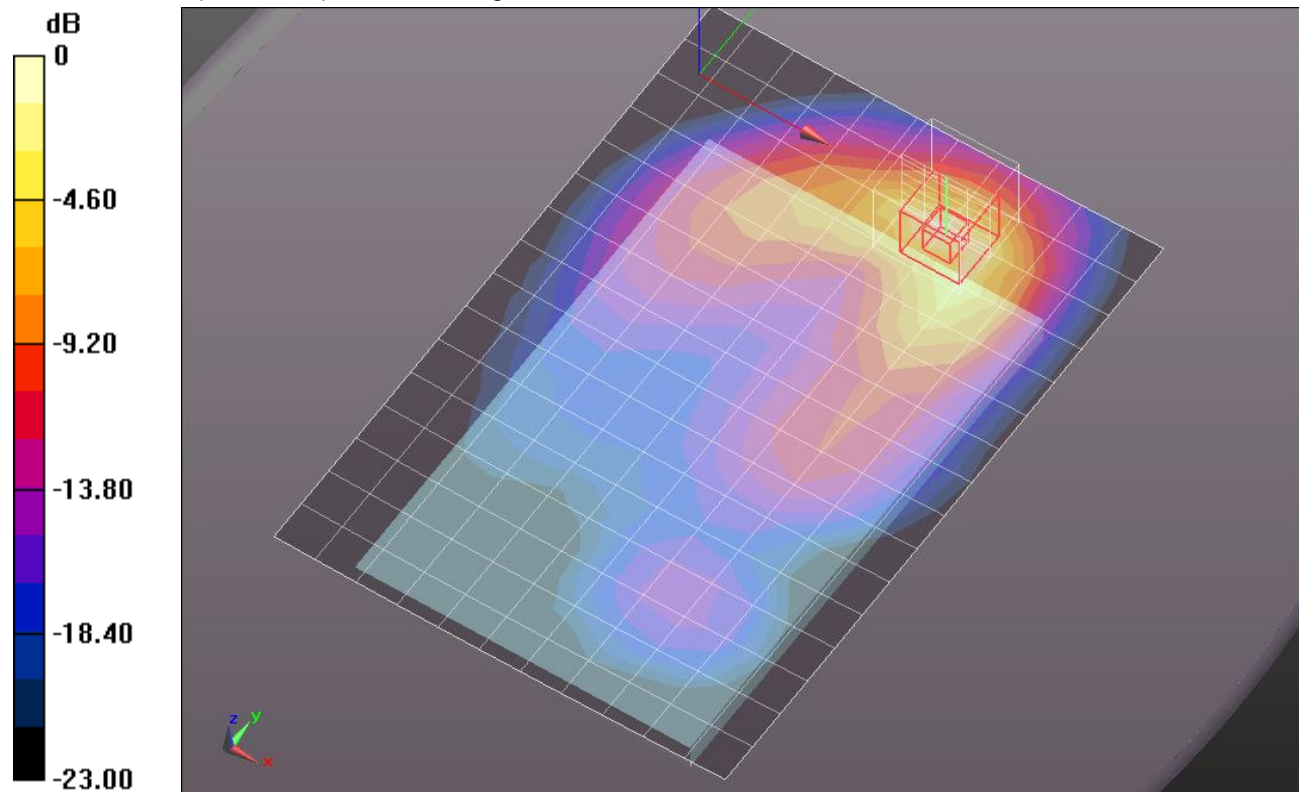
Rear_8mm/R.99_Ch 9400 w/Headset/Zoom Scan (5x5x7)/Cube 0: Measurement grid: dx=8mm, dy=8mm, dz=5mm

Reference Value = 21.530 V/m; Power Drift = 0.02 dB

Peak SAR (extrapolated) = 1.0090

SAR(1 g) = 0.574 mW/g; SAR(10 g) = 0.296 mW/g

Maximum value of SAR (measured) = 0.730 mW/g



0 dB = 0.730mW/g = -2.73 dB mW/g

WCDMA UMTS Band II

Frequency: 1880 MHz; Duty Cycle: 1:1; Room Ambient Temperature: 24.0°C; Liquid Temperature: 23.0°C

Medium parameters used: $f = 1880$ MHz; $\sigma = 1.488$ mho/m; $\epsilon_r = 53.354$; $\rho = 1000$ kg/m³

DASY5 Configuration:

- Electronics: DAE4 Sn1259; Calibrated: 2/13/2012
- Probe: EX3DV3 - SN3531; ConvF(7.91, 7.91, 7.91); Calibrated: 12/19/2011
- Sensor-Surface: 2.5mm (Mechanical Surface Detection)
- Phantom: ELI v5.0 (A); Type: QDOVA001BB; Serial: 1120

Edge_1_0mm/R.99_Ch 9400/Area Scan (6x12x1): Measurement grid: dx=15mm, dy=15mm

Maximum value of SAR (measured) = 0.508 mW/g

Edge_1_0mm/R.99_Ch 9400/Zoom Scan (5x5x7)/Cube 0: Measurement grid: dx=8mm, dy=8mm,

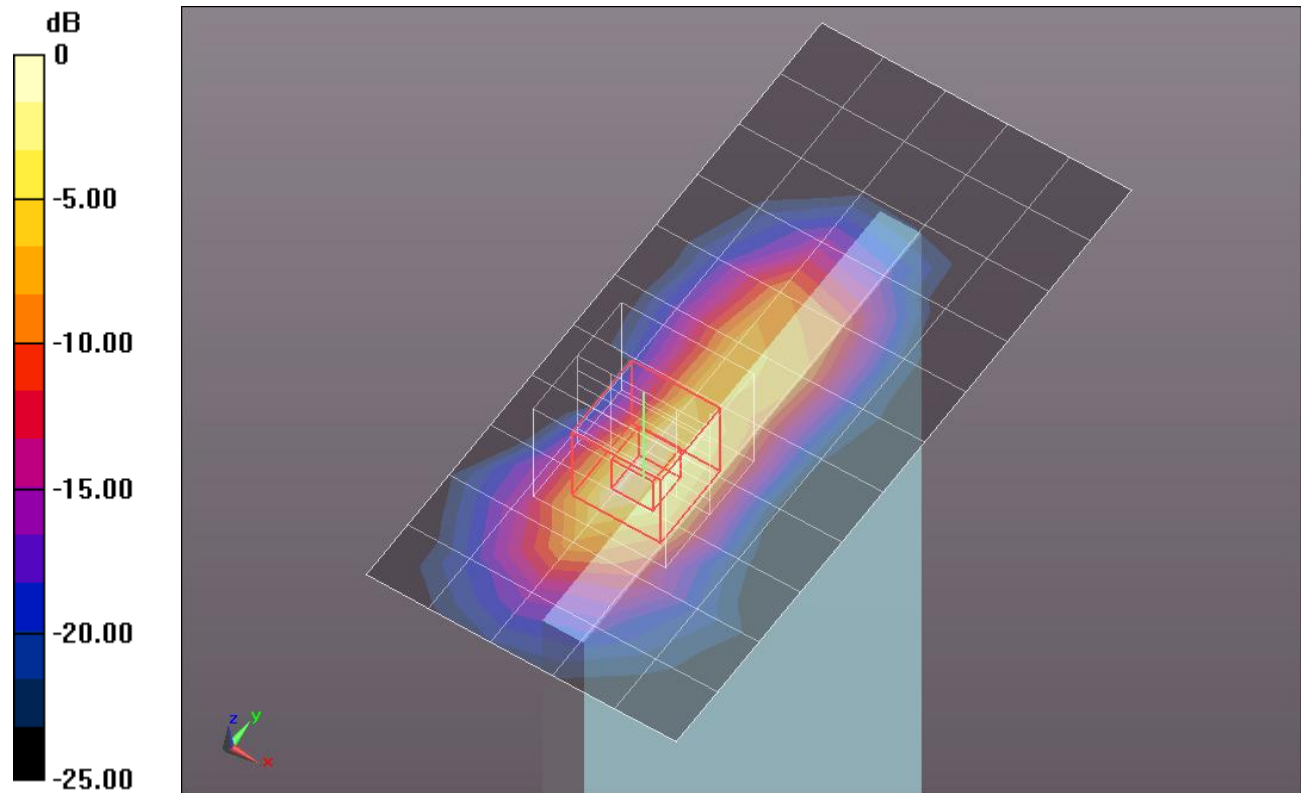
dz=5mm

Reference Value = 18.669 V/m; Power Drift = -0.13 dB

Peak SAR (extrapolated) = 0.9330

SAR(1 g) = 0.468 mW/g; SAR(10 g) = 0.207 mW/g

Maximum value of SAR (measured) = 0.673 mW/g



0 dB = 0.670mW/g = -3.48 dB mW/g

WCDMA UMTS Band II

Frequency: 1880 MHz; Duty Cycle: 1:1; Room Ambient Temperature: 24.0°C; Liquid Temperature: 23.0°C
Medium parameters used: $f = 1880$ MHz; $\sigma = 1.488$ mho/m; $\epsilon_r = 53.354$; $\rho = 1000$ kg/m³

DASY5 Configuration:

- Electronics: DAE4 Sn1259; Calibrated: 2/13/2012
- Probe: EX3DV3 - SN3531; ConvF(7.91, 7.91, 7.91); Calibrated: 12/19/2011
- Sensor-Surface: 2.5mm (Mechanical Surface Detection)
- Phantom: ELI v5.0 (A); Type: QDOVA001BB; Serial: 1120

Edge_1_5mm/R.99_Ch 9400/Area Scan (6x12x1): Measurement grid: dx=15mm, dy=15mm
Maximum value of SAR (measured) = 1.031 mW/g

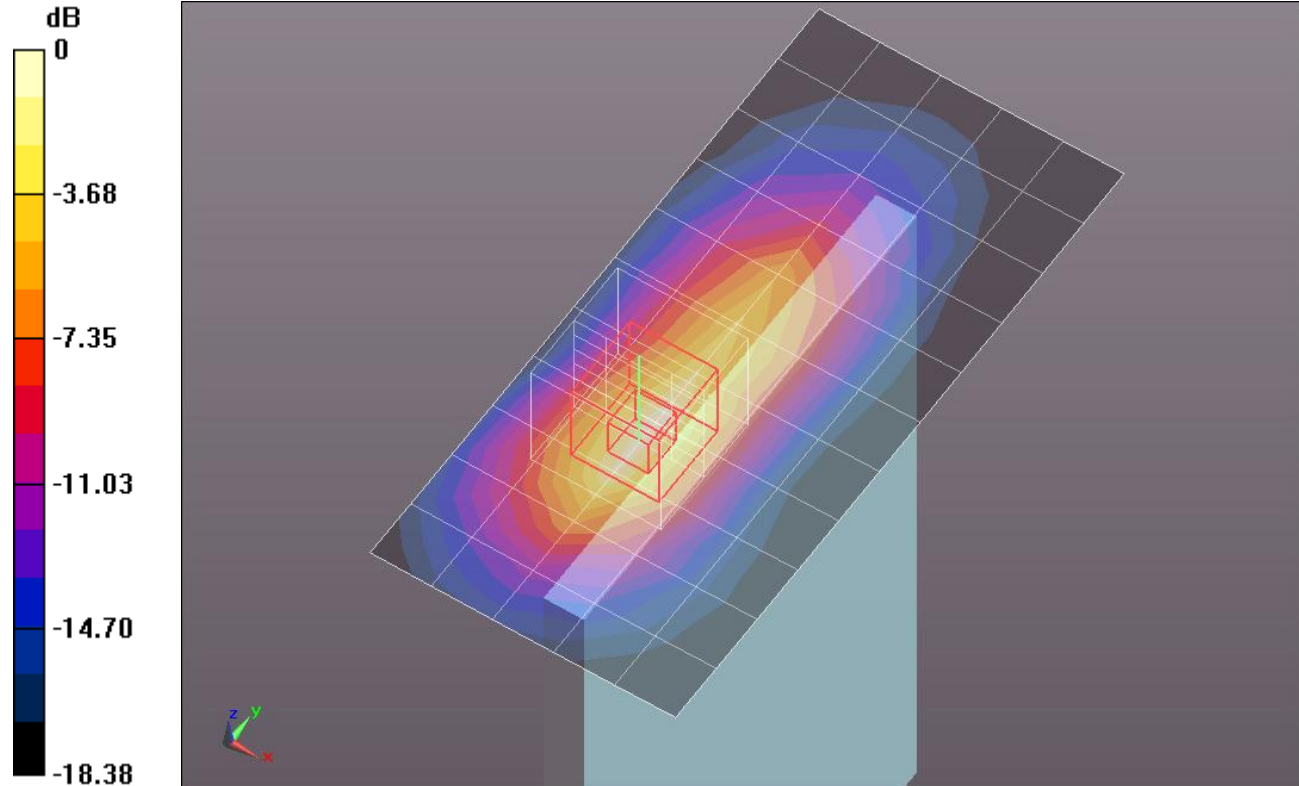
Edge_1_5mm/R.99_Ch 9400/Zoom Scan (5x5x7)/Cube 0: Measurement grid: dx=8mm, dy=8mm, dz=5mm

Reference Value = 26.057 V/m; Power Drift = 0.07 dB

Peak SAR (extrapolated) = 1.3980

SAR(1 g) = 0.790 mW/g; SAR(10 g) = 0.402 mW/g

Maximum value of SAR (measured) = 1.058 mW/g

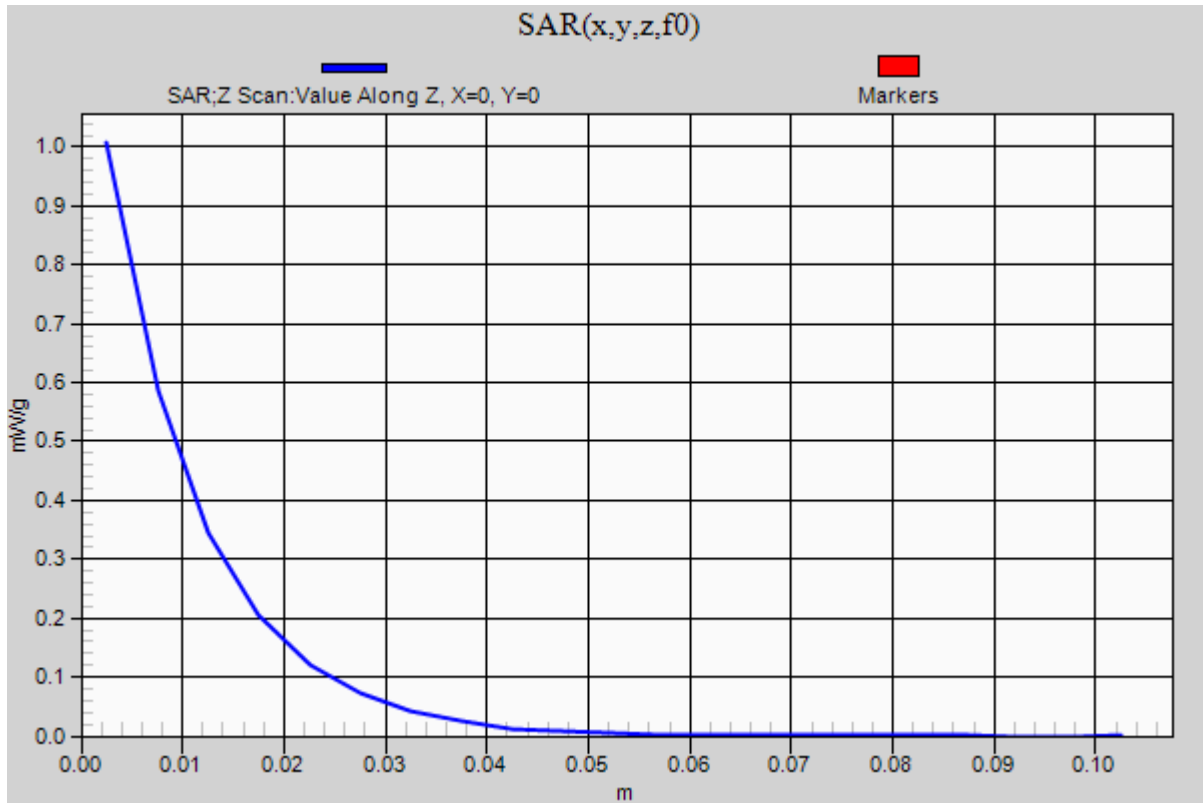


0 dB = 1.060mW/g = 0.51 dB mW/g

WCDMA UMTS Band II

Frequency: 1880 MHz; Duty Cycle: 1:1

Edge_1_5mm/R.99_Ch 9400/Z Scan (1x1x21): Measurement grid: dx=20mm, dy=20mm, dz=5mm
Maximum value of SAR (measured) = 1.007 mW/g



WCDMA UMTS Band II

Frequency: 1880 MHz; Duty Cycle: 1:1; Room Ambient Temperature: 24.0°C; Liquid Temperature: 23.0°C
Medium parameters used: $f = 1880$ MHz; $\sigma = 1.488$ mho/m; $\epsilon_r = 53.354$; $\rho = 1000$ kg/m³

DASY5 Configuration:

- Electronics: DAE4 Sn1259; Calibrated: 2/13/2012
- Probe: EX3DV3 - SN3531; ConvF(7.91, 7.91, 7.91); Calibrated: 12/19/2011
- Sensor-Surface: 2.5mm (Mechanical Surface Detection)
- Phantom: ELI v5.0 (A); Type: QDOVA001BB; Serial: 1120

Edge_1_45deg_0mm/R.99_Ch9400/Area Scan (9x13x1): Measurement grid: dx=15mm, dy=15mm
Maximum value of SAR (measured) = 0.532 mW/g

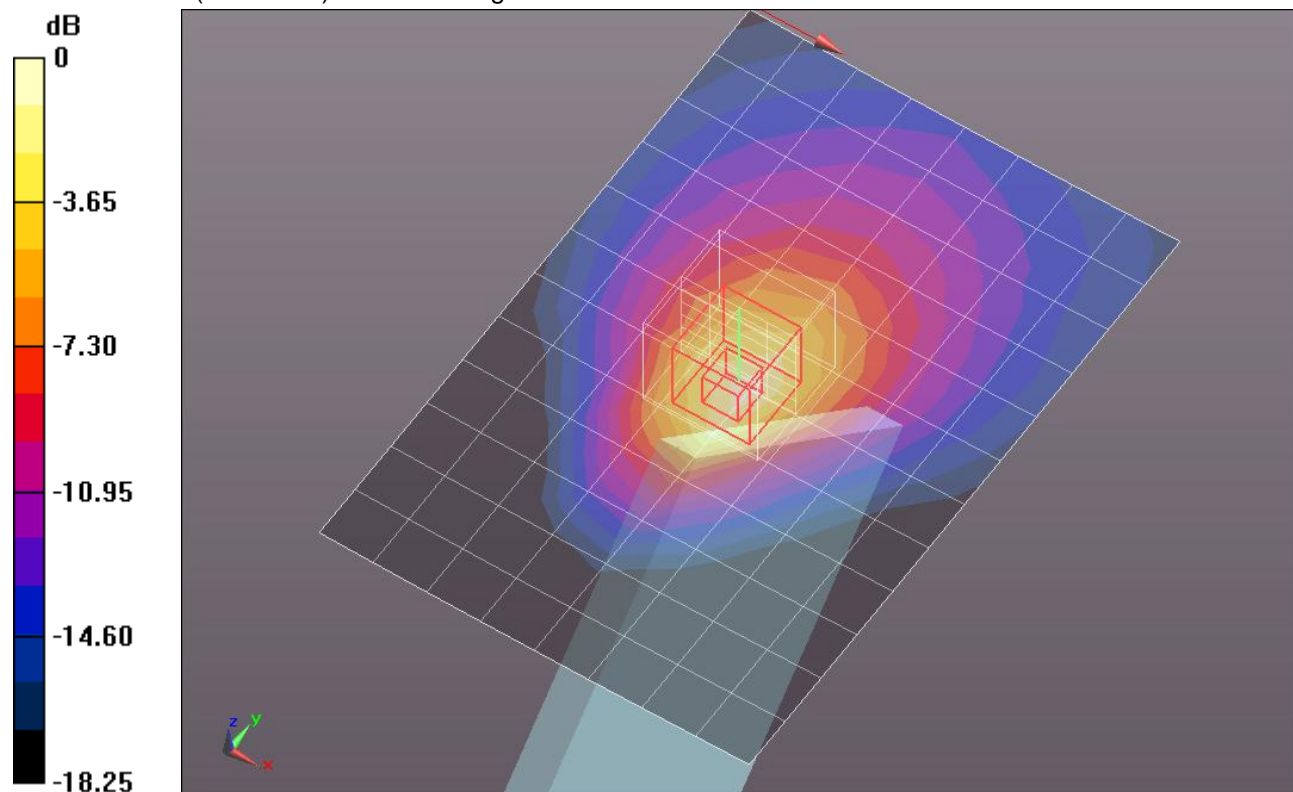
Edge_1_45deg_0mm/R.99_Ch9400/Zoom Scan (5x5x7)/Cube 0: Measurement grid: dx=8mm, dy=8mm, dz=5mm

Reference Value = 19.055 V/m; Power Drift = 0.06 dB

Peak SAR (extrapolated) = 0.7540

SAR(1 g) = 0.441 mW/g; SAR(10 g) = 0.235 mW/g

Maximum value of SAR (measured) = 0.564 mW/g



0 dB = 0.560mW/g = -5.04 dB mW/g

WCDMA UMTS Band II

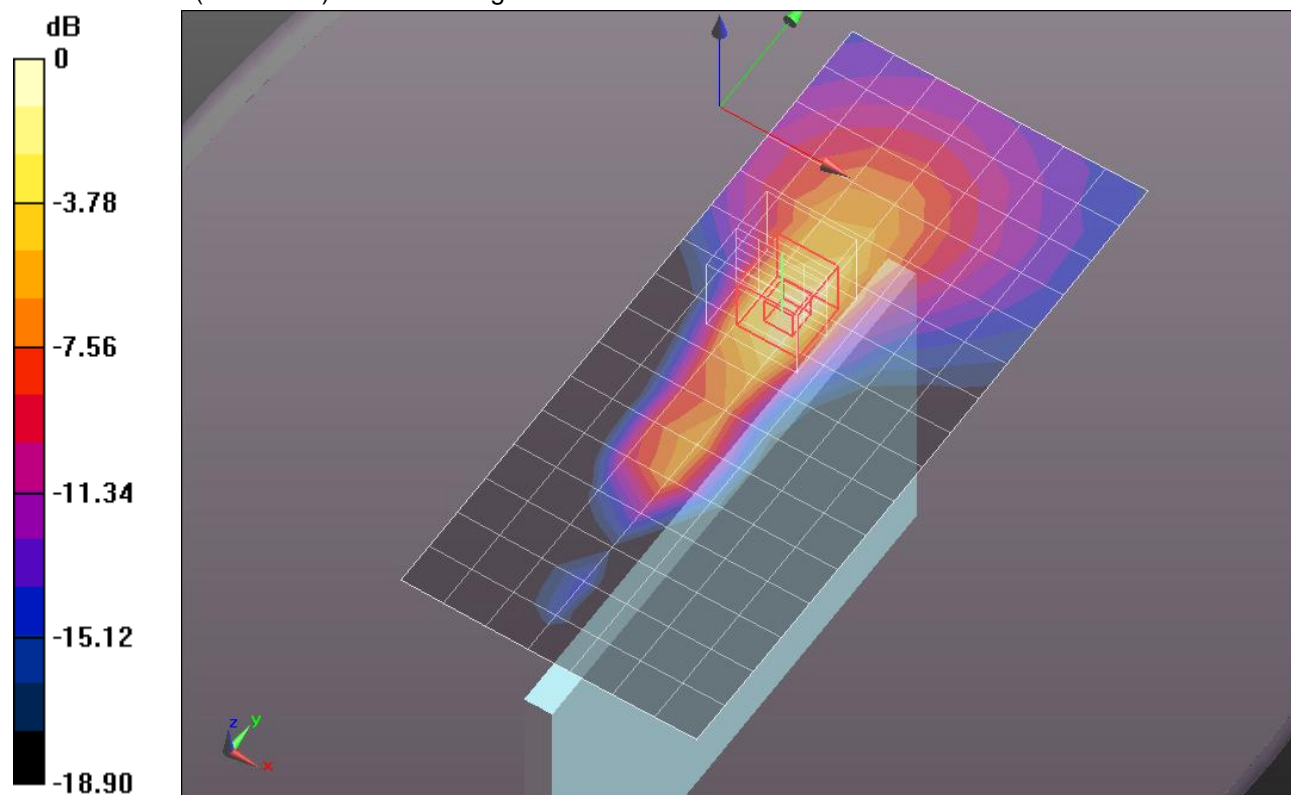
Frequency: 1880 MHz; Duty Cycle: 1:1; Room Ambient Temperature: 24.0°C; Liquid Temperature: 23.0°C
Medium parameters used: $f = 1880$ MHz; $\sigma = 1.488$ mho/m; $\epsilon_r = 53.354$; $\rho = 1000$ kg/m³

DASY5 Configuration:

- Electronics: DAE4 Sn1259; Calibrated: 2/13/2012
- Probe: EX3DV3 - SN3531; ConvF(7.91, 7.91, 7.91); Calibrated: 12/19/2011
- Sensor-Surface: 4mm (Mechanical Surface Detection)
- Phantom: ELI v5.0 (A); Type: QDOVA001BB; Serial: 1120

Edge_4/R.99_Ch9400/Area Scan (8x17x1): Measurement grid: dx=15mm, dy=15mm
Maximum value of SAR (measured) = 0.384 mW/g

Edge_4/R.99_Ch9400/Zoom Scan (5x5x7)/Cube 0: Measurement grid: dx=8mm, dy=8mm, dz=5mm
Reference Value = 6.629 V/m; Power Drift = 0.19 dB
Peak SAR (extrapolated) = 0.8440
SAR(1 g) = 0.434 mW/g; SAR(10 g) = 0.215 mW/g
Maximum value of SAR (measured) = 0.492 mW/g



0 dB = 0.490mW/g = -6.20 dB mW/g