

20120322_SystemPerformanceCheck-D2450V2 SN 748

Frequency: 2450 MHz; Duty Cycle: 1:1; Room Ambient Temperature: 24.0°C; Liquid Temperature: 23.0°C
Medium parameters used: $f = 2450$ MHz; $\sigma = 1.99$ mho/m; $\epsilon_r = 51.214$; $\rho = 1000$ kg/m³

DASY5 Configuration:

- Electronics: DAE4 Sn1259; Calibrated: 2/13/2012
- Probe: EX3DV3 - SN3531; ConvF(7.44, 7.44, 7.44); Calibrated: 12/19/2011
- Sensor-Surface: 2.5mm (Mechanical Surface Detection)
- Phantom: ELI v5.0 (B); Type: QDOVA001BB; Serial: 1118

Body/Pin=100 mW/Area Scan (7x7x1): Measurement grid: dx=15mm, dy=15mm

Maximum value of SAR (measured) = 4.609 mW/g

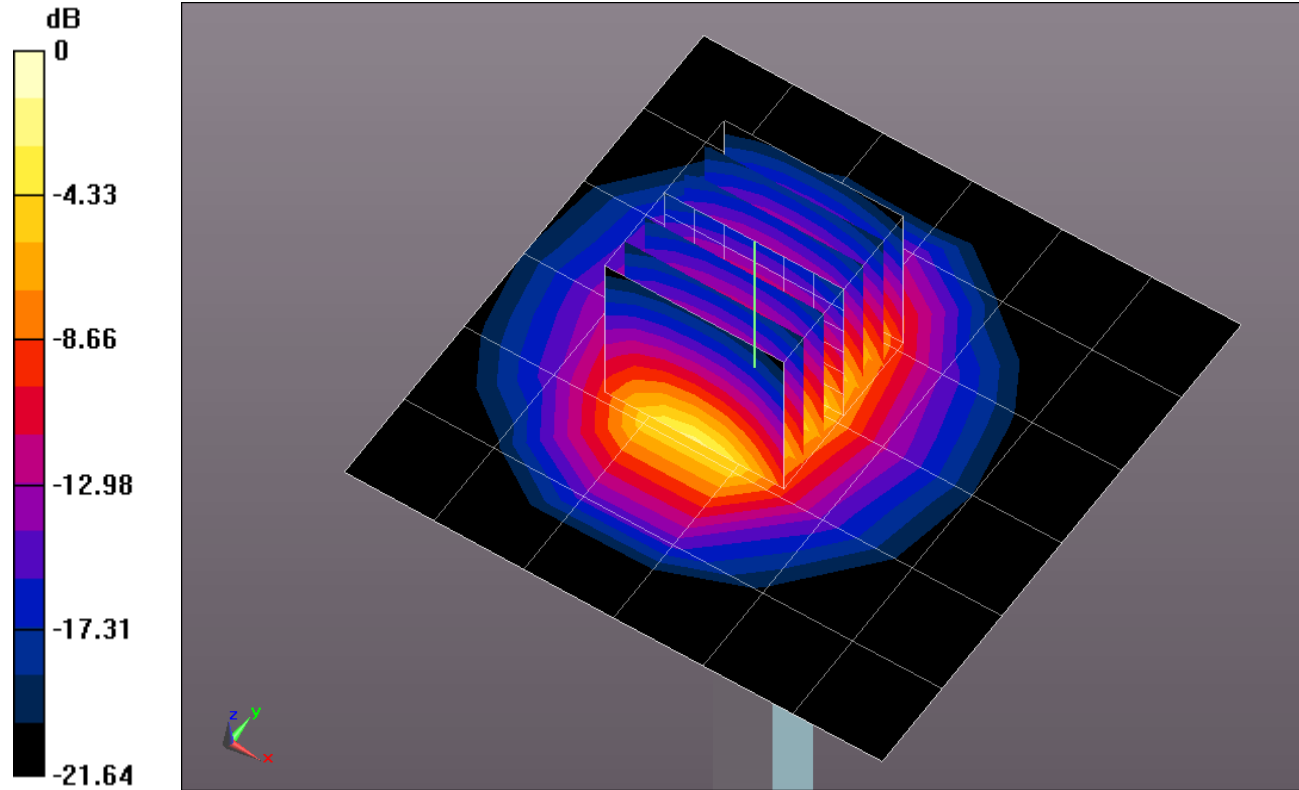
Body/Pin=100 mW/Zoom Scan (7x7x7)/Cube 0: Measurement grid: dx=5mm, dy=5mm, dz=5mm

Reference Value = 59.223 V/m; Power Drift = 0.0073 dB

Peak SAR (extrapolated) = 10.7020

SAR(1 g) = 5.17 mW/g; SAR(10 g) = 2.4 mW/g

Maximum value of SAR (measured) = 7.329 mW/g



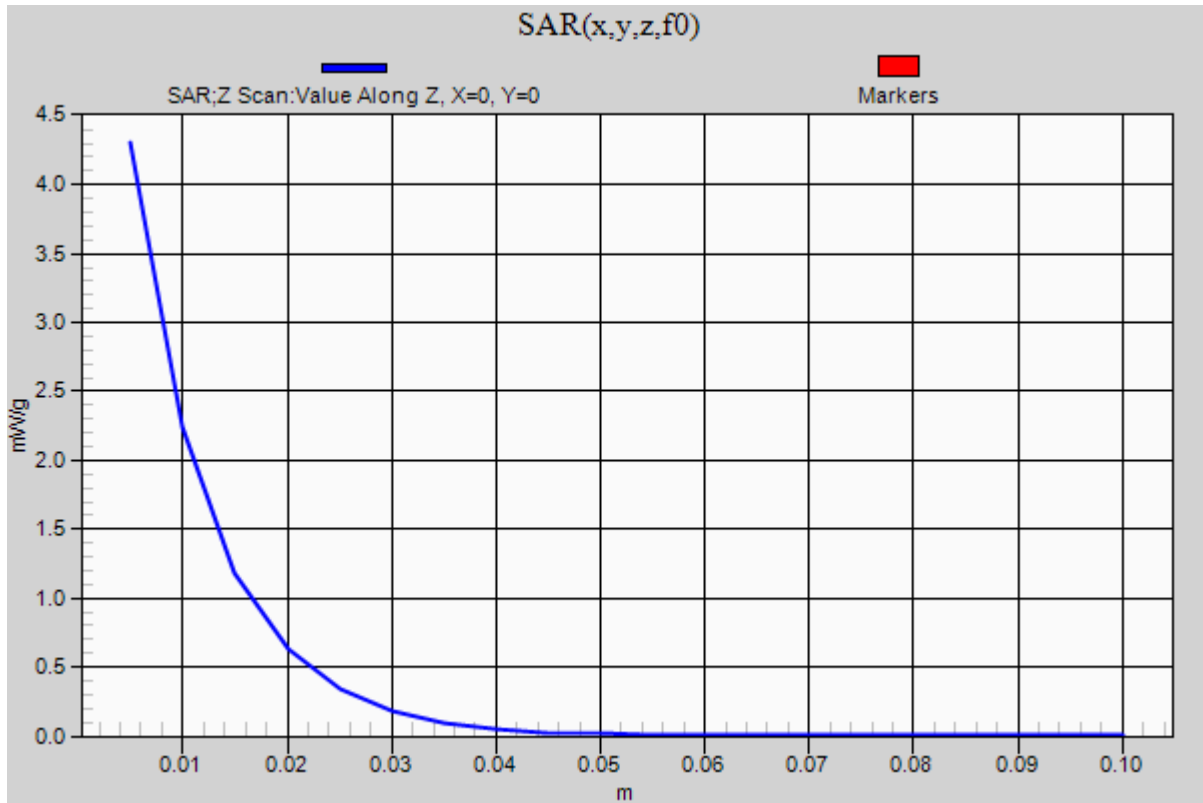
0 dB = 7.330mW/g = 17.30 dB mW/g

Test Laboratory: UL CCS SAR Lab B Date: 3/22/2012

20120322_SystemPerformanceCheck-D2450V2 SN 748

Frequency: 2450 MHz; Duty Cycle: 1:1

Body/Pin=100 mW/Z Scan (1x1x21): Measurement grid: dx=20mm, dy=20mm, dz=5mm
Maximum value of SAR (measured) = 4.304 mW/g



20120322_SystemPerformanceCheck-D2450V2 SN 748

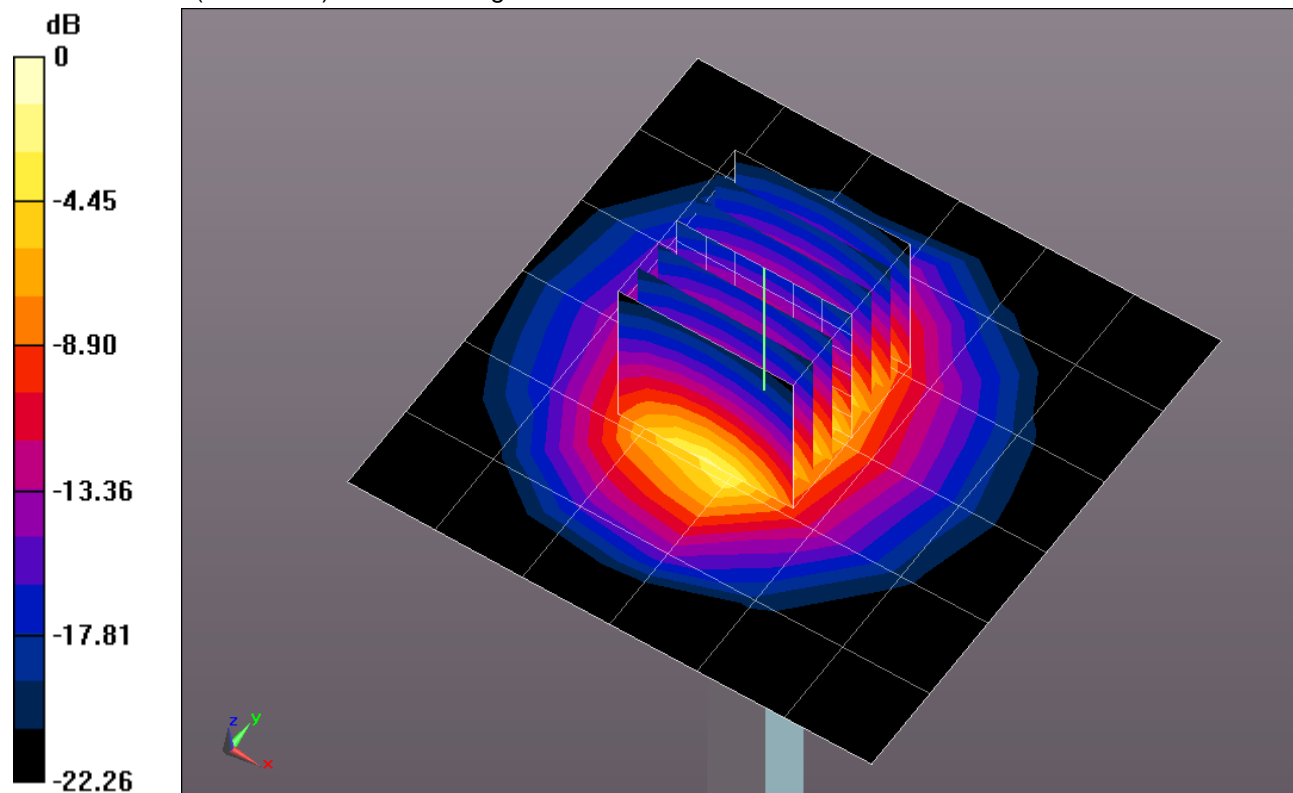
Frequency: 2450 MHz; Duty Cycle: 1:1; Room Ambient Temperature: 24.0°C; Liquid Temperature: 23.0°C
Medium parameters used: $f = 2450$ MHz; $\sigma = 1.79$ mho/m; $\epsilon_r = 38.191$; $\rho = 1000$ kg/m³

DASY5 Configuration:

- Electronics: DAE4 Sn1259; Calibrated: 2/13/2012
- Probe: EX3DV3 - SN3531; ConvF(7.4, 7.4, 7.4); Calibrated: 12/19/2011
- Sensor-Surface: 2.5mm (Mechanical Surface Detection)
- Phantom: ELI v5.0 (A); Type: QDOVA001BB; Serial: 1120

Head/Pin=100 mW/Area Scan (7x7x1): Measurement grid: dx=15mm, dy=15mm
Maximum value of SAR (measured) = 6.669 mW/g

Head/Pin=100 mW/Zoom Scan (7x7x7)/Cube 0: Measurement grid: dx=5mm, dy=5mm, dz=5mm
Reference Value = 67.262 V/m; Power Drift = -0.01 dB
Peak SAR (extrapolated) = 11.6050
SAR(1 g) = 5.57 mW/g; SAR(10 g) = 2.58 mW/g
Maximum value of SAR (measured) = 7.948 mW/g



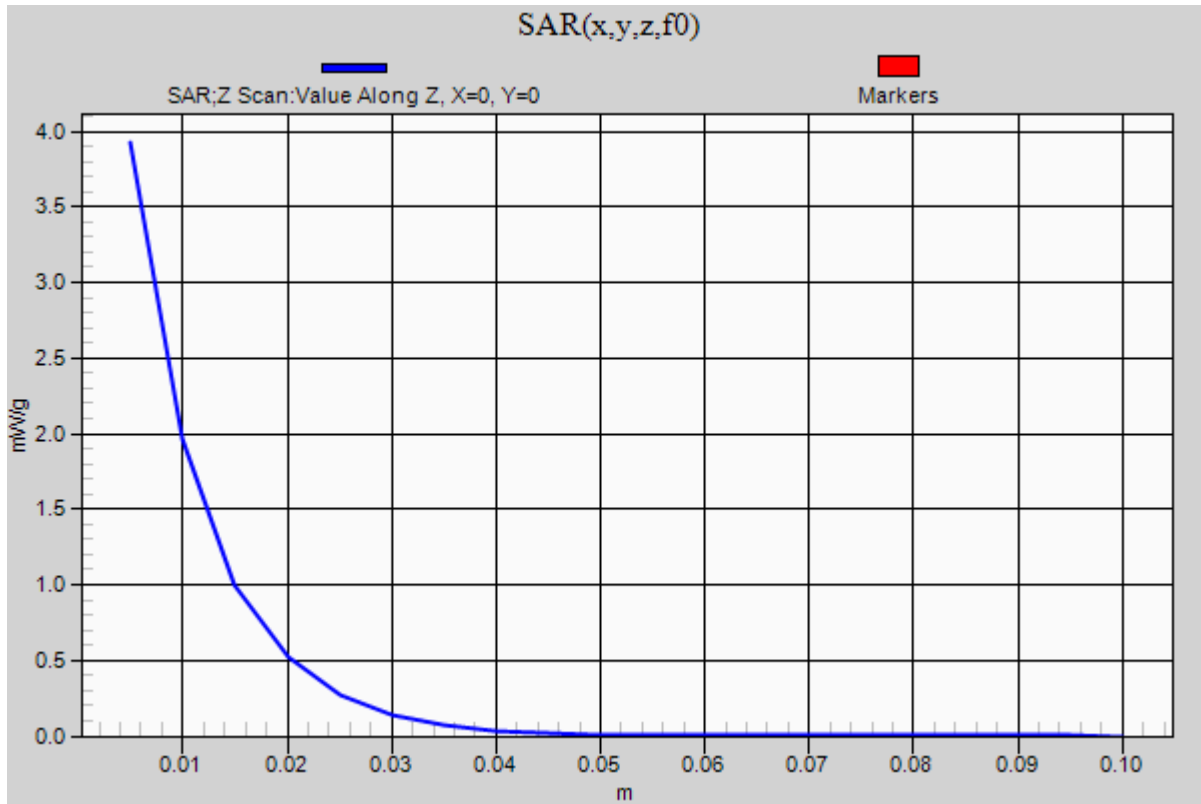
0 dB = 7.950mW/g = 18.01 dB mW/g

Test Laboratory: UL CCS SAR Lab B Date: 3/22/2012

20120322_SystemPerformanceCheck-D2450V2 SN 748

Frequency: 2450 MHz; Duty Cycle: 1:1

Head/Pin=100 mW/Z Scan (1x1x21): Measurement grid: dx=20mm, dy=20mm, dz=5mm
Maximum value of SAR (measured) = 3.924 mW/g



20120323_SystemPerformanceCheck-D1900V2 SN 5d043

Frequency: 1900 MHz; Duty Cycle: 1:1; Room Ambient Temperature: 24.0°C; Liquid Temperature: 23.0°C
Medium parameters used: $f = 1900$ MHz; $\sigma = 1.515$ mho/m; $\epsilon_r = 53.547$; $\rho = 1000$ kg/m³

DASY5 Configuration:

- Electronics: DAE4 Sn1259; Calibrated: 2/13/2012
- Probe: EX3DV3 - SN3531; ConvF(7.91, 7.91, 7.91); Calibrated: 12/19/2011
- Sensor-Surface: 2.5mm (Mechanical Surface Detection)
- Phantom: ELI v5.0 (A); Type: QDOVA001BB; Serial: 1120

Body/Pin=100 mW/Area Scan (7x7x1): Measurement grid: dx=15mm, dy=15mm

Maximum value of SAR (measured) = 5.342 mW/g

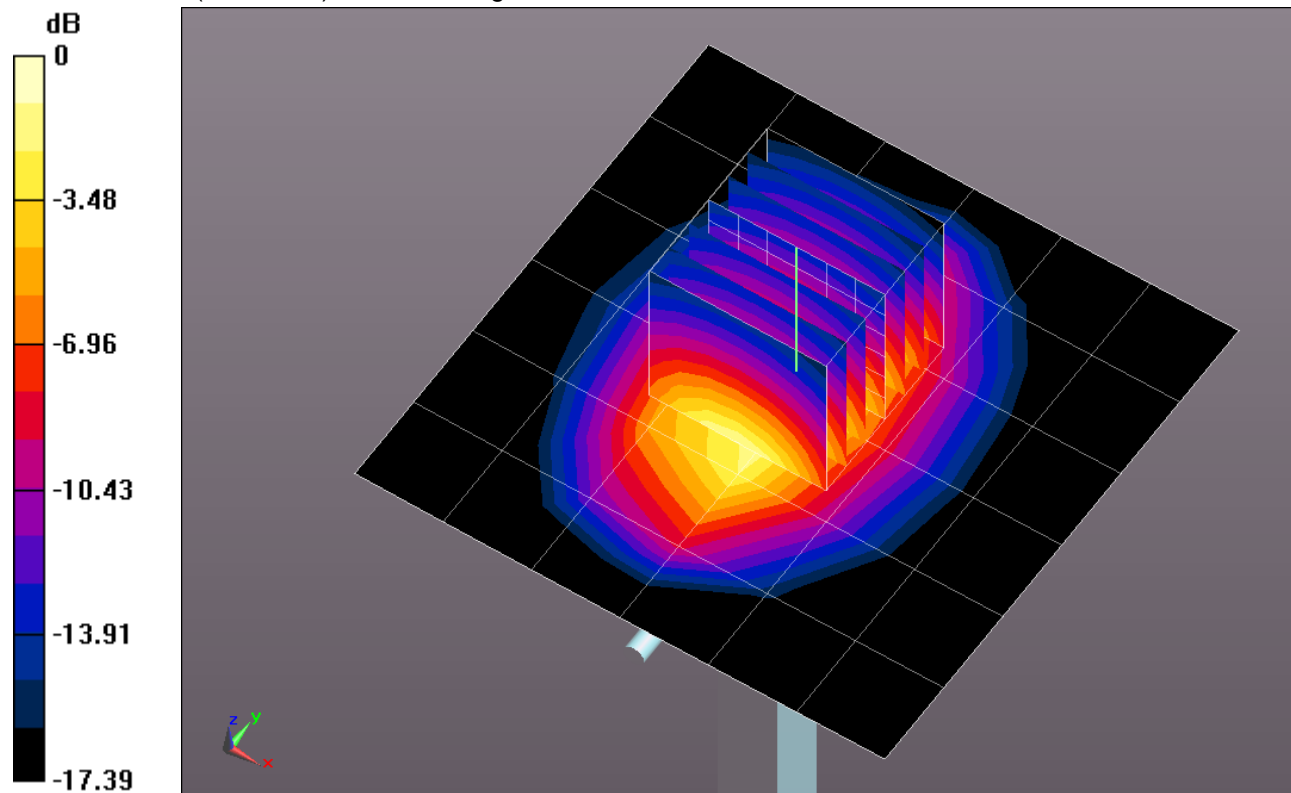
Body/Pin=100 mW/Zoom Scan (7x7x7)/Cube 0: Measurement grid: dx=5mm, dy=5mm, dz=5mm

Reference Value = 61.921 V/m; Power Drift = -0.03 dB

Peak SAR (extrapolated) = 7.8180

SAR(1 g) = 4.34 mW/g; SAR(10 g) = 2.28 mW/g

Maximum value of SAR (measured) = 5.782 mW/g

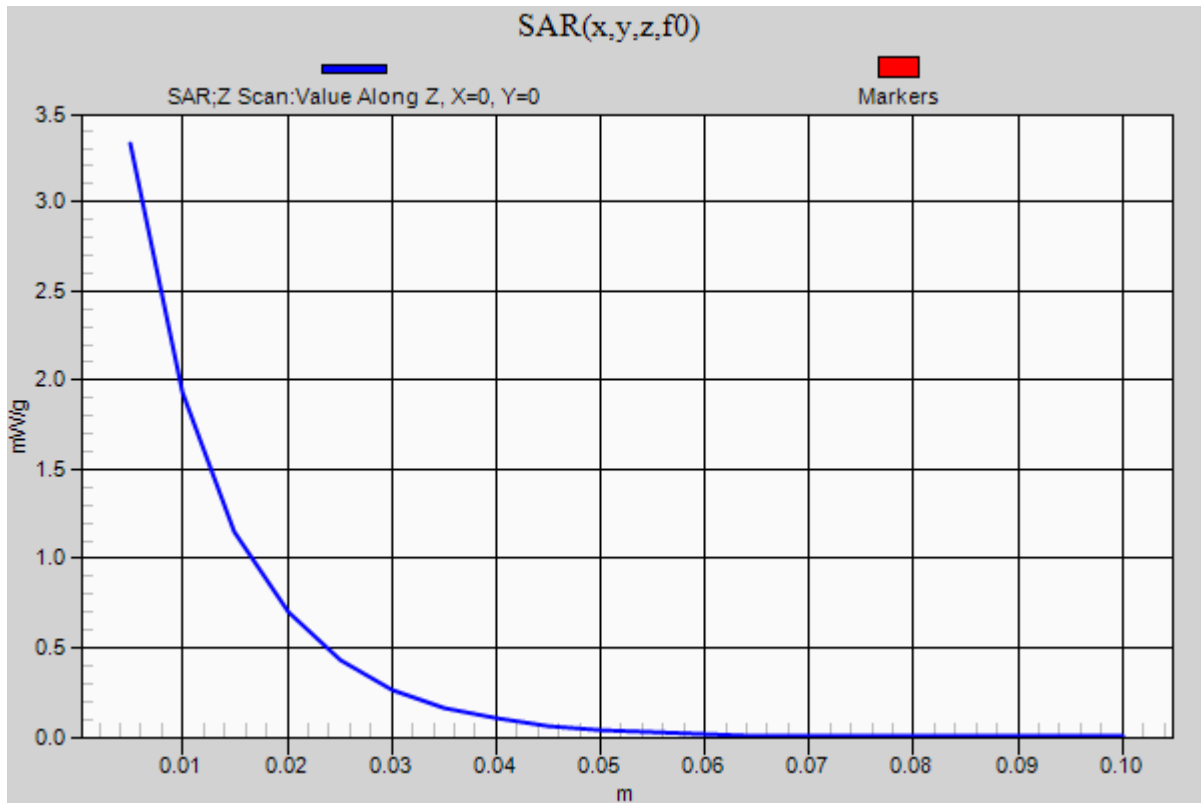


0 dB = 5.780mW/g = 15.24 dB mW/g

20120323_SystemPerformanceCheck-D1900V2 SN 5d043

Frequency: 1900 MHz; Duty Cycle: 1:1

Body/Pin=100 mW/Z Scan (1x1x21): Measurement grid: dx=20mm, dy=20mm, dz=5mm
Maximum value of SAR (measured) = 3.325 mW/g



20120323_SystemPerformanceCheck-D1900V2 SN 5d043

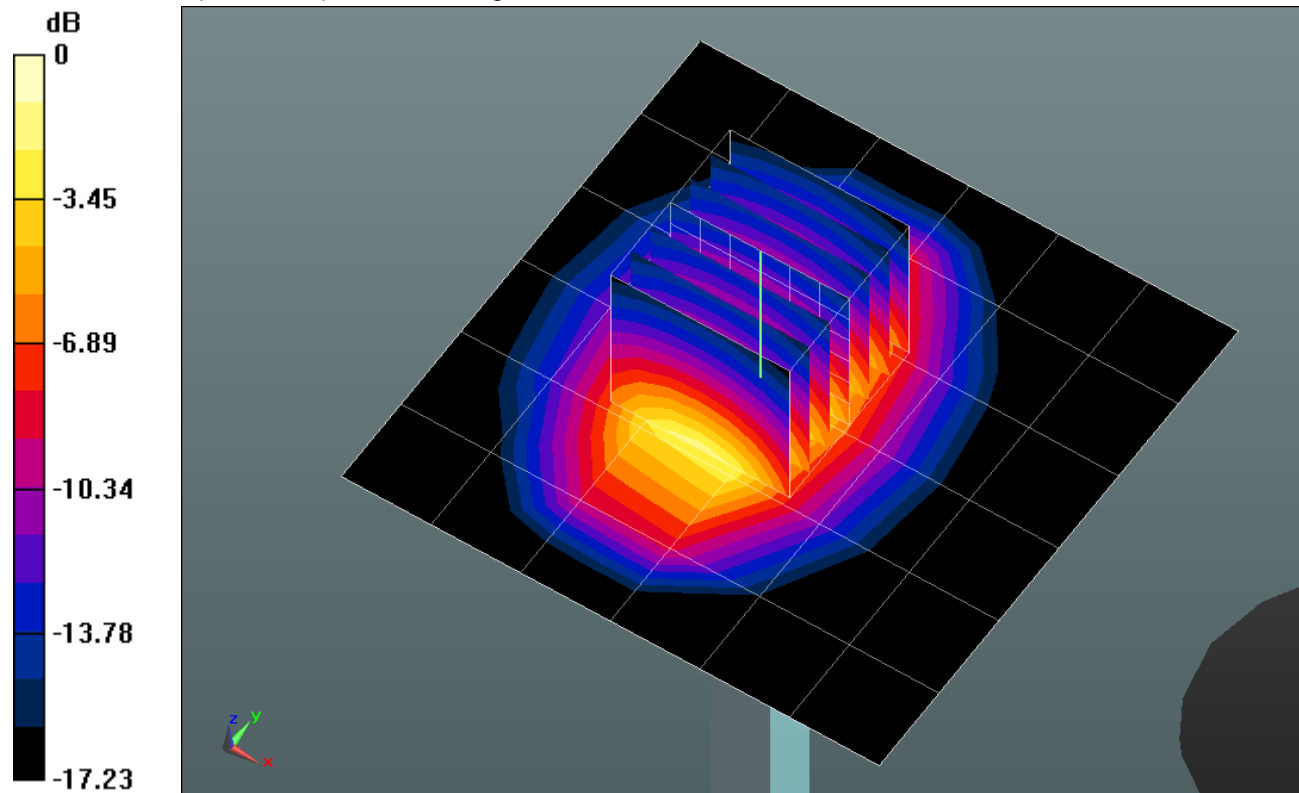
Frequency: 1900 MHz; Duty Cycle: 1:1; Room Ambient Temperature: 24.0°C; Liquid Temperature: 23.0°C
Medium parameters used: $f = 1900$ MHz; $\sigma = 1.394$ mho/m; $\epsilon_r = 39.834$; $\rho = 1000$ kg/m³

DASY5 Configuration:

- Electronics: DAE4 Sn1259; Calibrated: 2/13/2012
- Probe: EX3DV3 - SN3531; ConvF(8.53, 8.53, 8.53); Calibrated: 12/19/2011
- Sensor-Surface: 2.5mm (Mechanical Surface Detection)
- Phantom: SAM; Type: QD000P40CD; Serial: 1629

Head/Pin=100 mW/Area Scan (7x7x1): Measurement grid: dx=15mm, dy=15mm
Maximum value of SAR (measured) = 4.104 mW/g

Head/Pin=100 mW/Zoom Scan (7x7x7)/Cube 0: Measurement grid: dx=5mm, dy=5mm, dz=5mm
Reference Value = 62.573 V/m; Power Drift = 0.01 dB
Peak SAR (extrapolated) = 7.4630
SAR(1 g) = 4.05 mW/g; SAR(10 g) = 2.13 mW/g
Maximum value of SAR (measured) = 5.461 mW/g



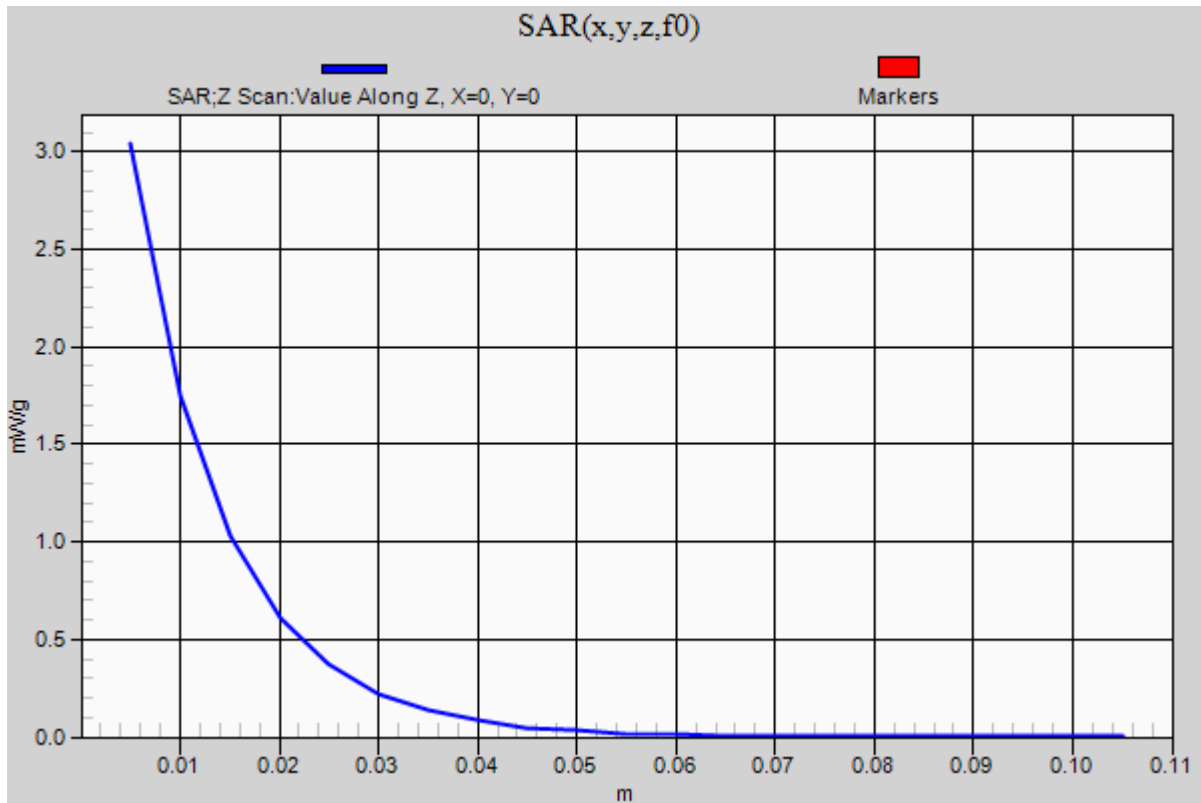
0 dB = 5.460mW/g = 14.74 dB mW/g

20120323_SystemPerformanceCheck-D1900V2 SN 5d043

Frequency: 1900 MHz; Duty Cycle: 1:1

Head/Pin=100 mW/Z Scan (1x1x21): Measurement grid: dx=20mm, dy=20mm, dz=5mm

Maximum value of SAR (measured) = 3.041 mW/g



20120326_SystemPerformanceCheck-D835V2 SN 4d117

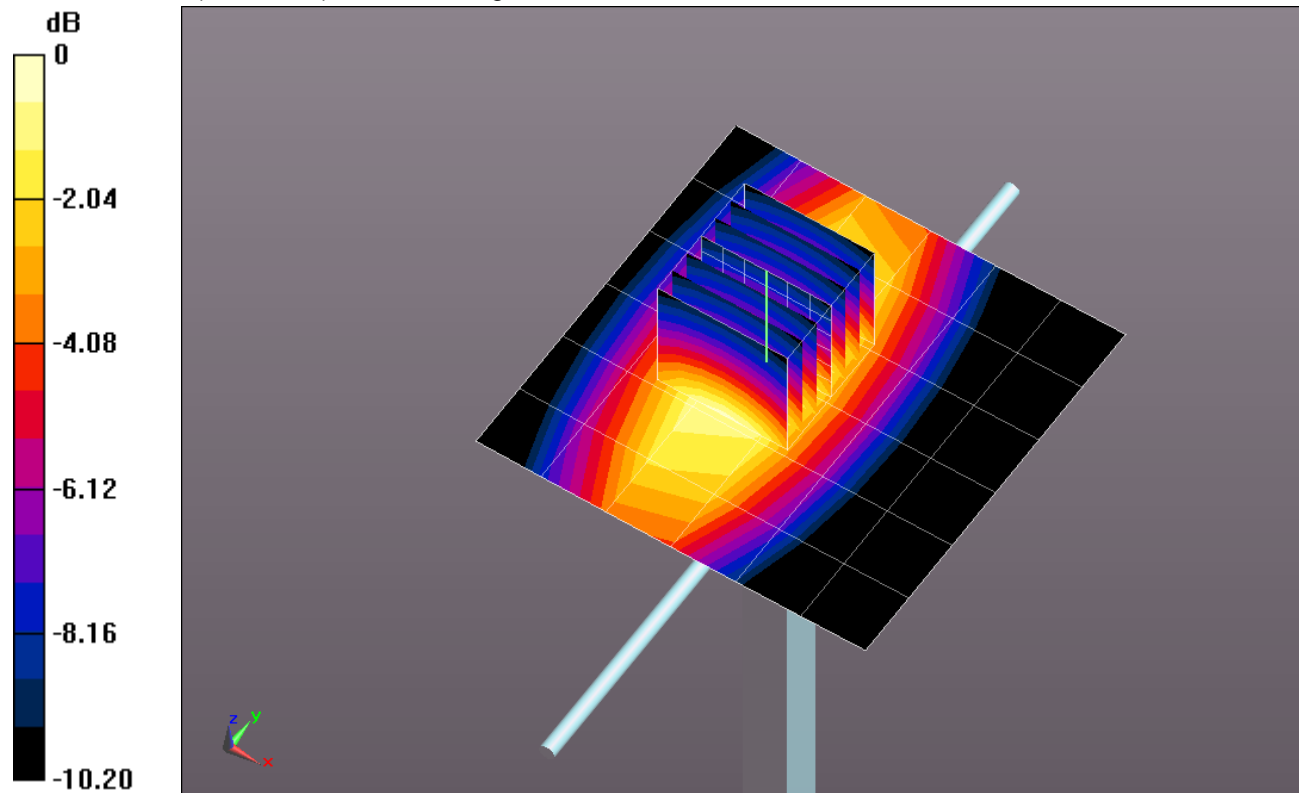
Frequency: 835 MHz; Duty Cycle: 1:1; Room Ambient Temperature: 24.0°C; Liquid Temperature: 23.0°C
Medium parameters used: $f = 835$ MHz; $\sigma = 0.99$ mho/m; $\epsilon_r = 55.857$; $\rho = 1000$ kg/m³

DASY5 Configuration:

- Electronics: DAE4 Sn1259; Calibrated: 2/13/2012
- Probe: EX3DV3 - SN3531; ConvF(10, 10, 10); Calibrated: 12/19/2011
- Sensor-Surface: 2.5mm (Mechanical Surface Detection)
- Phantom: ELI v5.0 (B); Type: QDOVA001BB; Serial: 1118

Body/Pin=100 mW/Area Scan (7x7x1): Measurement grid: dx=15mm, dy=15mm
Maximum value of SAR (measured) = 1.099 mW/g

Body/Pin=100 mW/Zoom Scan (7x7x7)/Cube 0: Measurement grid: dx=5mm, dy=5mm, dz=5mm
Reference Value = 34.632 V/m; Power Drift = 0.06 dB
Peak SAR (extrapolated) = 1.4930
SAR(1 g) = 1.02 mW/g; SAR(10 g) = 0.674 mW/g
Maximum value of SAR (measured) = 1.235 mW/g



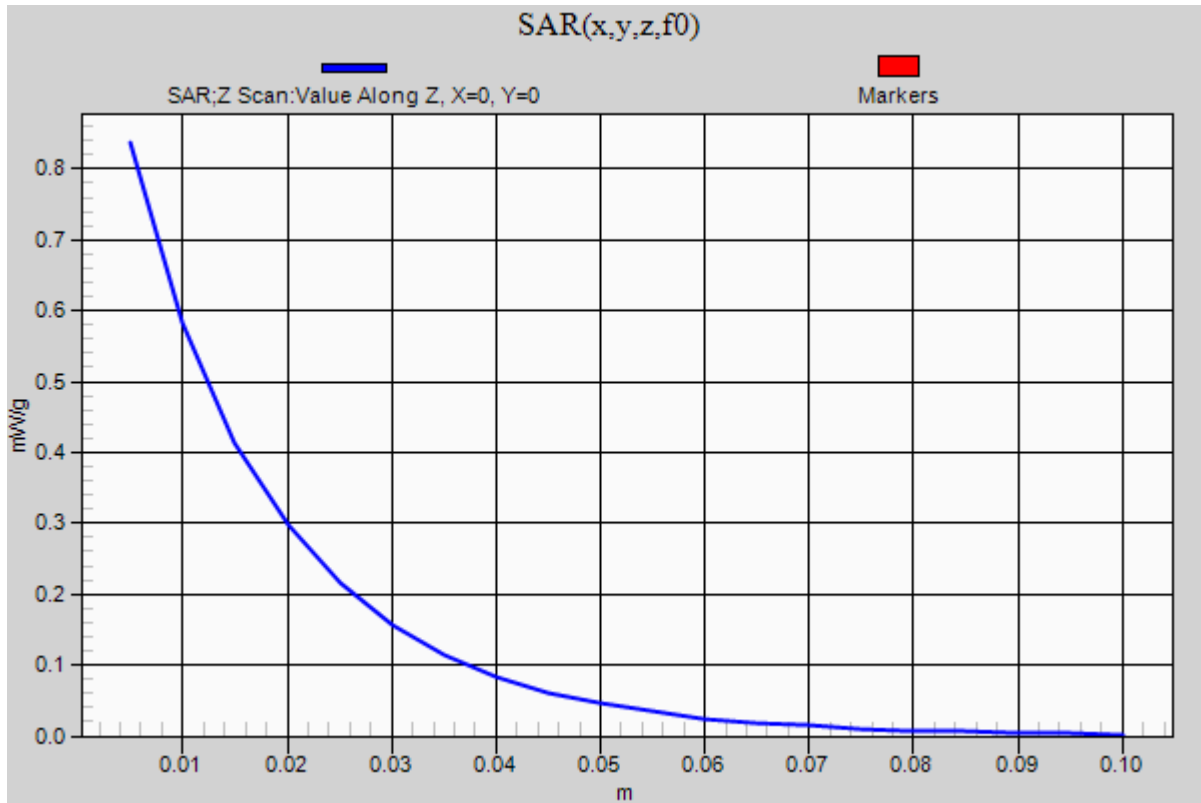
0 dB = 1.230mW/g = 1.80 dB mW/g

Test Laboratory: UL CCS SAR Lab B Date: 3/26/2012

20120326_SystemPerformanceCheck-D835V2 SN 4d117

Frequency: 835 MHz; Duty Cycle: 1:1

Body/Pin=100 mW/Z Scan (1x1x21): Measurement grid: dx=20mm, dy=20mm, dz=5mm
Maximum value of SAR (measured) = 0.837 mW/g



20120327_SystemPerformanceCheck-D835V2 SN 4d117

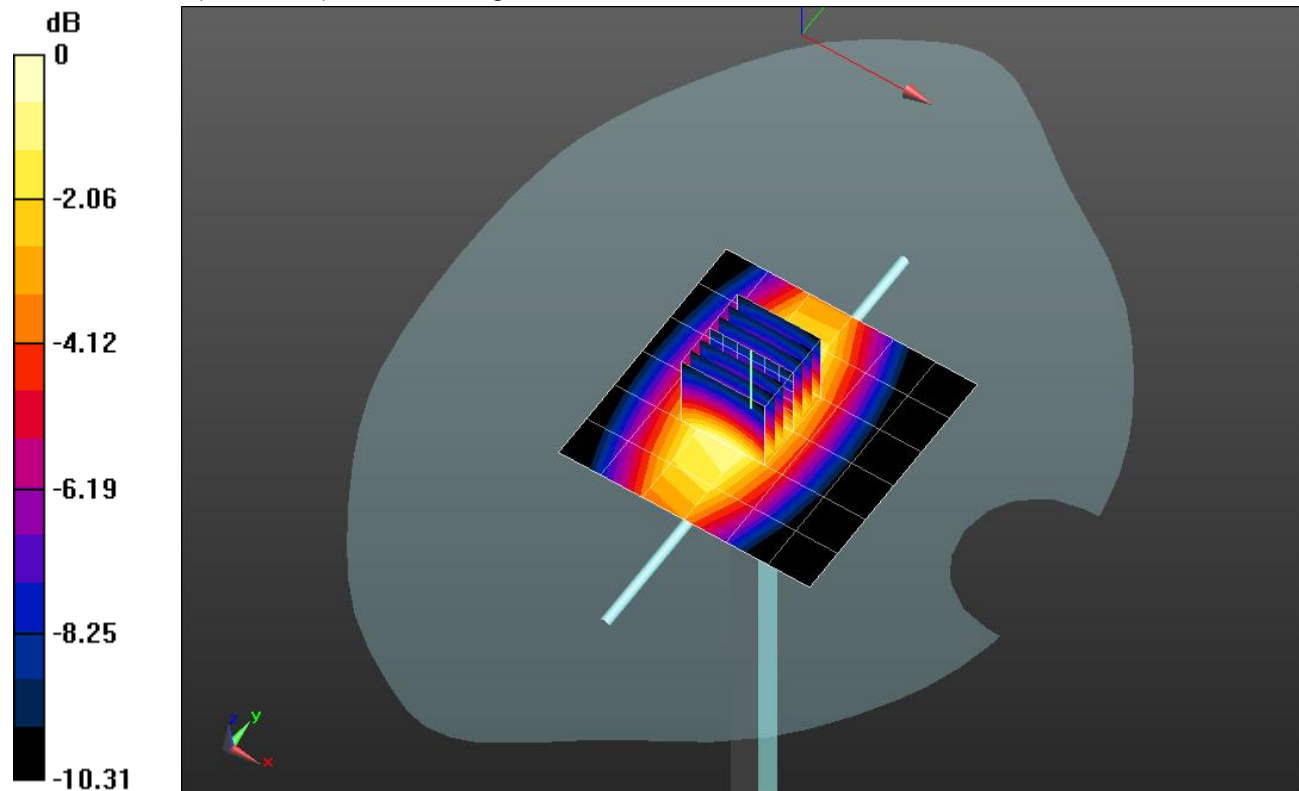
Frequency: 835 MHz; Duty Cycle: 1:1; Room Ambient Temperature: 24.0°C; Liquid Temperature: 23.0°C
Medium parameters used: $f = 835 \text{ MHz}$; $\sigma = 0.99 \text{ mho/m}$; $\epsilon_r = 55.857$; $\rho = 1000 \text{ kg/m}^3$

DASY5 Configuration:

- Electronics: DAE4 Sn1259; Calibrated: 2/13/2012
- Probe: EX3DV3 - SN3531; ConvF(10, 10, 10); Calibrated: 12/19/2011
- Sensor-Surface: 2.5mm (Mechanical Surface Detection)
- Phantom: SAM; Type: QD000P40CD; Serial: 1629

Head/Pin=100 mW/Area Scan (7x7x1): Measurement grid: $dx=15\text{mm}$, $dy=15\text{mm}$
Maximum value of SAR (measured) = 1.058 mW/g

Head/Pin=100 mW/Zoom Scan (7x7x7)/Cube 0: Measurement grid: $dx=5\text{mm}$, $dy=5\text{mm}$, $dz=5\text{mm}$
Reference Value = 34.902 V/m; Power Drift = 0.03 dB
Peak SAR (extrapolated) = 1.4280
SAR(1 g) = 0.967 mW/g; SAR(10 g) = 0.639 mW/g
Maximum value of SAR (measured) = 1.172 mW/g



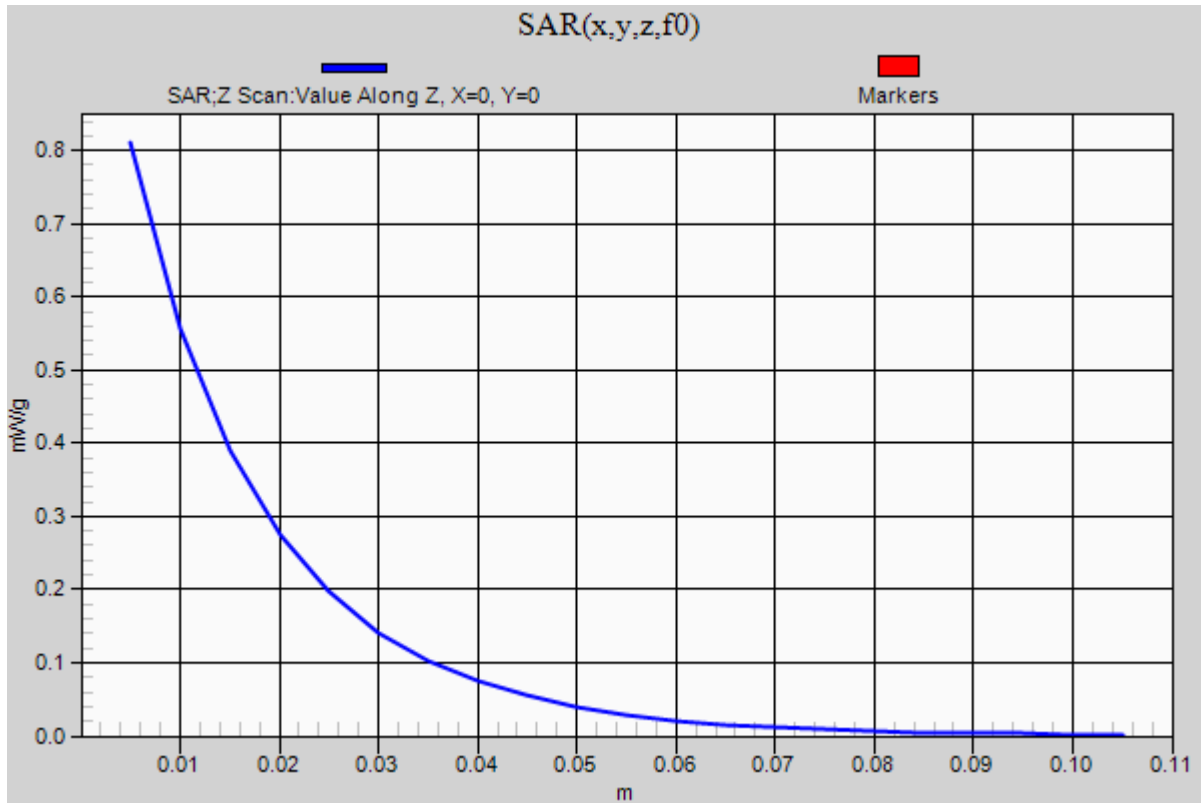
0 dB = 1.170mW/g = 1.36 dB mW/g

Test Laboratory: UL CCS SAR Lab B Date: 3/27/2012

20120327_SystemPerformanceCheck-D835V2 SN 4d117

Frequency: 835 MHz; Duty Cycle: 1:1

Head/Pin=100 mW/Z Scan (1x1x21): Measurement grid: dx=20mm, dy=20mm, dz=5mm
Maximum value of SAR (measured) = 0.811 mW/g



20120327_SystemPerformanceCheck-D1900V2 SN 5d043

Frequency: 1800 MHz; Duty Cycle: 1:1; Room Ambient Temperature: 24.0°C; Liquid Temperature: 23.0°C
Medium parameters used: $f = 1800$ MHz; $\sigma = 1.395$ mho/m; $\epsilon_r = 53.182$; $\rho = 1000$ kg/m³

DASY5 Configuration:

- Electronics: DAE4 Sn1259; Calibrated: 2/13/2012
- Probe: EX3DV3 - SN3531; ConvF(8.34, 8.34, 8.34); Calibrated: 12/19/2011
- Sensor-Surface: 2.5mm (Mechanical Surface Detection)
- Phantom: ELI v5.0 (A); Type: QDOVA001BB; Serial: 1120

Body/Pin=100 mW/Area Scan (7x7x1): Measurement grid: dx=15mm, dy=15mm

Maximum value of SAR (measured) = 3.968 mW/g

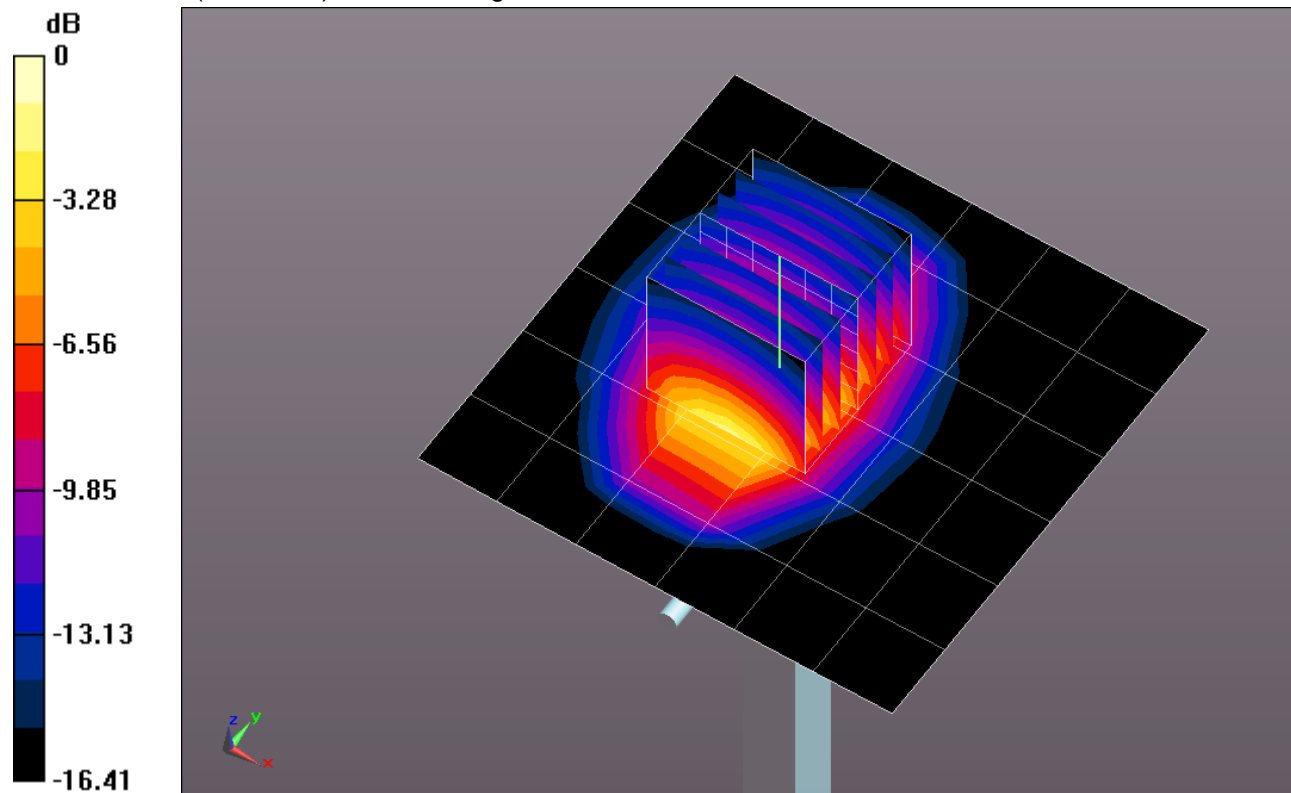
Body/Pin=100 mW/Zoom Scan (7x7x7)/Cube 0: Measurement grid: dx=5mm, dy=5mm, dz=5mm

Reference Value = 60.095 V/m; Power Drift = 0.05 dB

Peak SAR (extrapolated) = 7.1280

SAR(1 g) = 4.02 mW/g; SAR(10 g) = 2.14 mW/g

Maximum value of SAR (measured) = 5.352 mW/g



0 dB = 5.350mW/g = 14.57 dB mW/g

Test Laboratory: UL CCS SAR Lab B Date: 3/27/2012

20120327_SystemPerformanceCheck-D1900V2 SN 5d043

Frequency: 1800 MHz; Duty Cycle: 1:1

Body/Pin=100 mW/Z Scan (1x1x21): Measurement grid: dx=20mm, dy=20mm, dz=5mm
Maximum value of SAR (measured) = 2.877 mW/g

