



SAMSUNG

伊洋特有限公司为三星制造
MADE IN KOREA (CELL FROM CHINA)
FABRIQUE EN COREE (BATTERIE FABRIQUEE EN CHINE)
ENSAMBLADO EN COREA / MONTADO NA COREA
三星为三星制造

执行标准: GB/T18287-2000 类型: 3.7V锂离子
充电限制电压: 4.2V
3.7V LI-ION BATTERY 3.7V LI-ION BATTERIE 14.8Wh
3.7V LI-ION BATERIA 3.7V LI-ION BATERIA 14.8Wh

XXXXXXXX
XXXXXXXX-XXXX

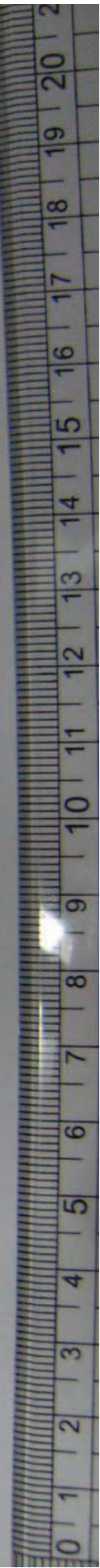
CE E

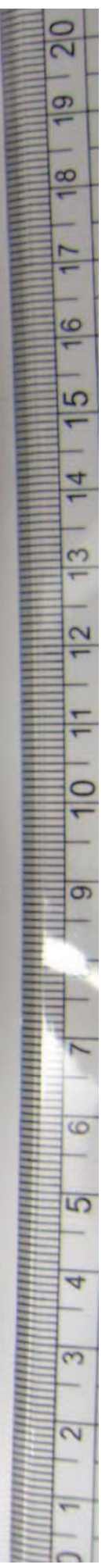
5

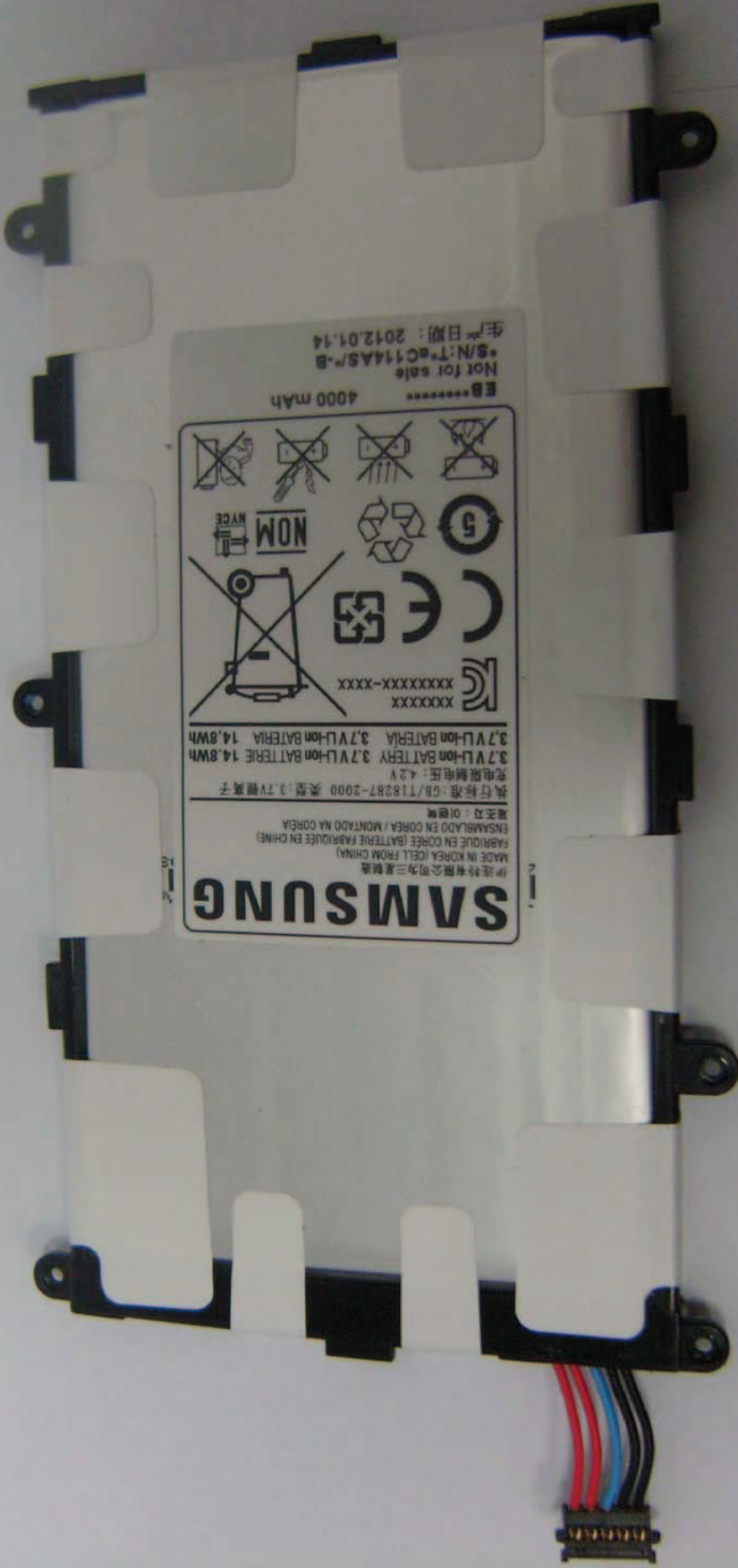
NOM NYCE

Waste disposal symbols: crossed-out wheeled bin, crossed-out incineration, crossed-out recycling, crossed-out disposal, crossed-out disposal with flame, crossed-out disposal with lightning bolt.

EB***** 4000 mAh
Not for sale
*S/N:T*ac114AS/*-B
生产日期: 2012.01.14







SAMSUNG

伊達特有限公司为三星製造

MADE IN KOREA (CELL FROM CHINA)

FABRIQUE EN CORÉE (BATTERIE FABRIQUEE EN CHINE)

ENSAMBLADO EN CORÉA / MONTADO NA CORÉA

三星及：01888

执行标准：GB/T18287-2000 类型：3.7V锂离子

充电限制电压：4.2V

3.7V Li-Ion BATTERY 3.7V Li-Ion BATERIA 3.7V Li-Ion BATERIA 14.8Wh

XXXXXXXXXX-XXXX

CE

RECYCLING

NOM

WVCE

4000 mAh

Not for sale

S/N: T#eC114AS/F-B

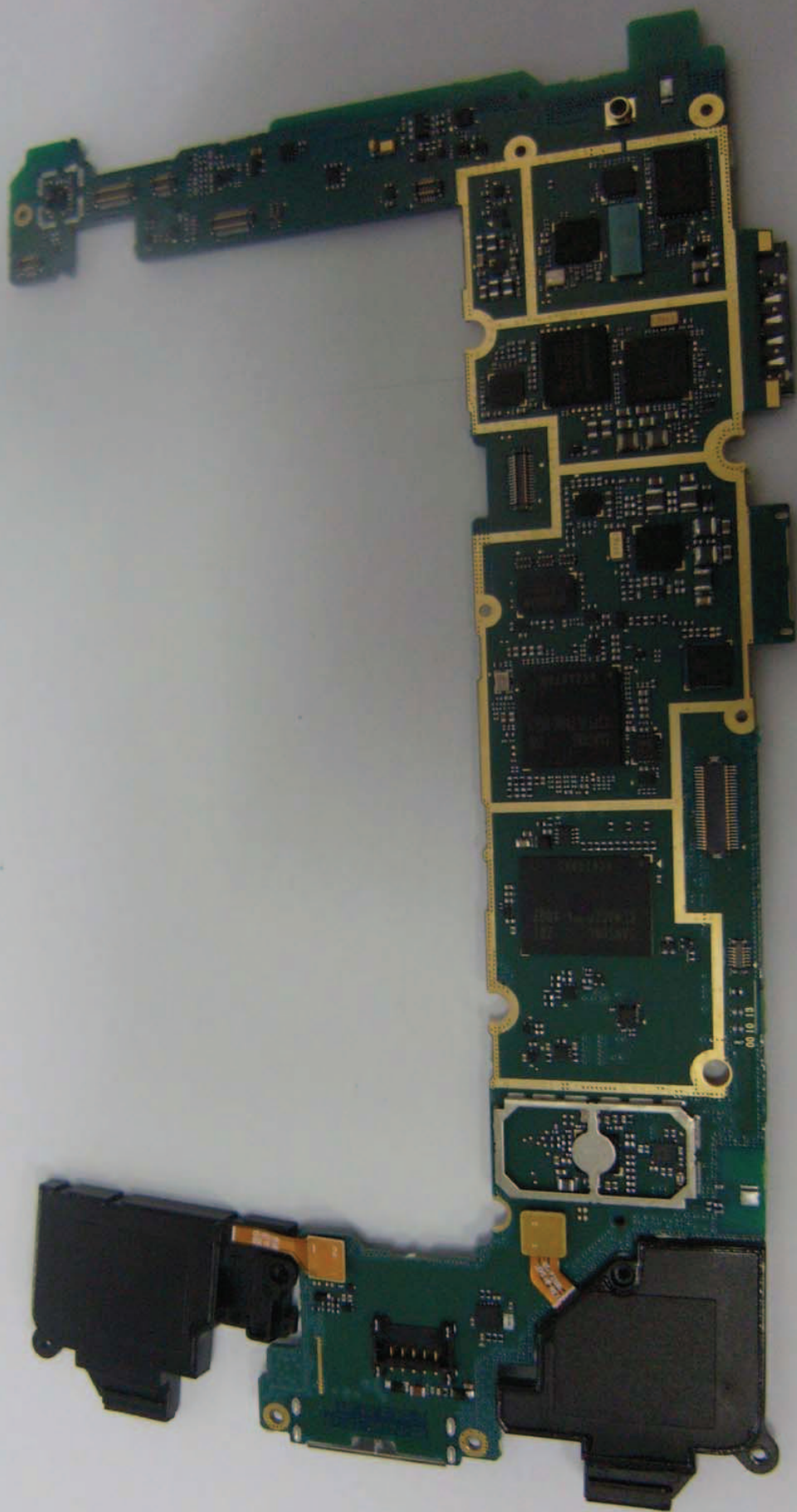
生产日期：2012.01.14





>SLSK
0016JD

091013



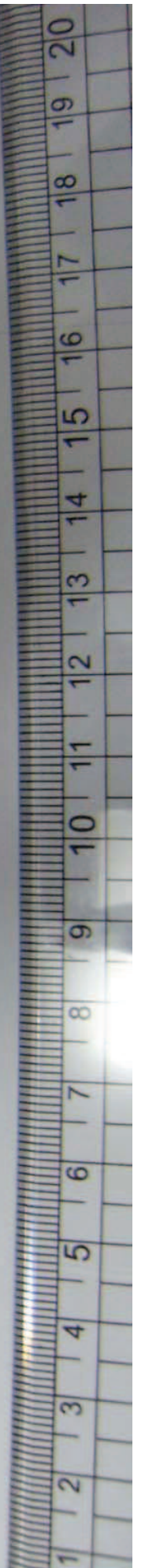


ROEHL

V070W5R S110122R0

REV. 2.1 / 2011.09.09
P2_CABLE
P2117 B

0202





02035RH

