

Test Laboratory: UL CCS SAR Lab B

**UMTS band II**

Communication System: UMTS-FDD (WCDMA); Frequency: 1880 MHz; Duty Cycle: 1:1  
 Medium parameters used:  $f = 1880$  MHz;  $\sigma = 1.428$  mho/m;  $\epsilon_r = 38.607$ ;  $\rho = 1000$  kg/m<sup>3</sup>  
 Phantom section: Left Section

Room Ambient Temperature: 24.0 deg. C; Liquid Temperature: 23.0 deg. C

DASY5 Configuration:

- Area Scan setting - Find Secondary Maximum Within: 2.0 dB and with a peak SAR value greater than 0.0012W/kg
- Probe: EX3DV3 - SN3531; ConvF(8.53, 8.53, 8.53); Calibrated: 12/19/2011
- Sensor-Surface: 2.5mm (Mechanical Surface Detection)
- Electronics: DAE4 Sn1258; Calibrated: 5/2/2011
- Phantom: SAM; Type: QD000P40CD; Serial: 1629
- Measurement SW: DASY52, Version 52.8 (0); SEMCAD X Version 14.6.4 (4989)

**Left/Touch\_R99 RMC, 12.2 kbps\_M ch/Area Scan (10x13x1):** Measurement grid: dx=15mm, dy=15mm

Maximum value of SAR (measured) = 0.243 mW/g

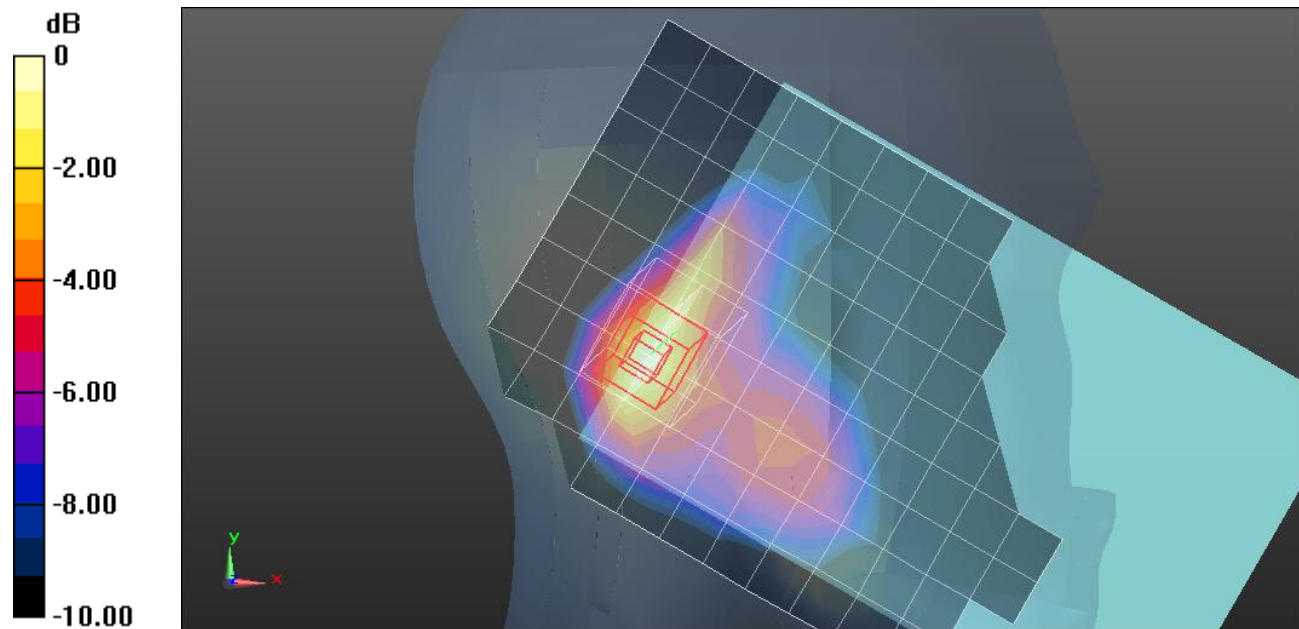
**Left/Touch\_R99 RMC, 12.2 kbps\_M ch/Zoom Scan (5x5x7)/Cube 0:** Measurement grid: dx=8mm, dy=8mm, dz=5mm

Reference Value = 13.101 V/m; Power Drift = -0.09 dB

Peak SAR (extrapolated) = 0.3050

**SAR(1 g) = 0.182 mW/g; SAR(10 g) = 0.099 mW/g**

Maximum value of SAR (measured) = 0.238 mW/g



0 dB = 0.240mW/g = -12.40 dB mW/g

Test Laboratory: UL CCS SAR Lab B

## UMTS band II

Communication System: UMTS-FDD (WCDMA); Frequency: 1880 MHz; Duty Cycle: 1:1  
 Medium parameters used:  $f = 1880$  MHz;  $\sigma = 1.428$  mho/m;  $\epsilon_r = 38.607$ ;  $\rho = 1000$  kg/m<sup>3</sup>  
 Phantom section: Left Section

Room Ambient Temperature: 24.0 deg. C; Liquid Temperature: 23.0 deg. C

DASY5 Configuration:

- Area Scan setting - Find Secondary Maximum Within: 2.0 dB and with a peak SAR value greater than 0.0012W/kg
- Probe: EX3DV3 - SN3531; ConvF(8.53, 8.53, 8.53); Calibrated: 12/19/2011
- Sensor-Surface: 2.5mm (Mechanical Surface Detection (Locations From Previous Scan Used)), Sensor-Surface: 2.5mm (Mechanical Surface Detection)
- Electronics: DAE4 Sn1258; Calibrated: 5/2/2011
- Phantom: SAM; Type: QD000P40CD; Serial: 1629
- Measurement SW: DASY52, Version 52.8 (0);SEMCAD X Version 14.6.4 (4989)

**Left/Tilt\_R99 RMC, 12.2 kbps\_M ch /Area Scan (10x13x1):** Measurement grid: dx=15mm, dy=15mm  
 Maximum value of SAR (measured) = 0.241 mW/g

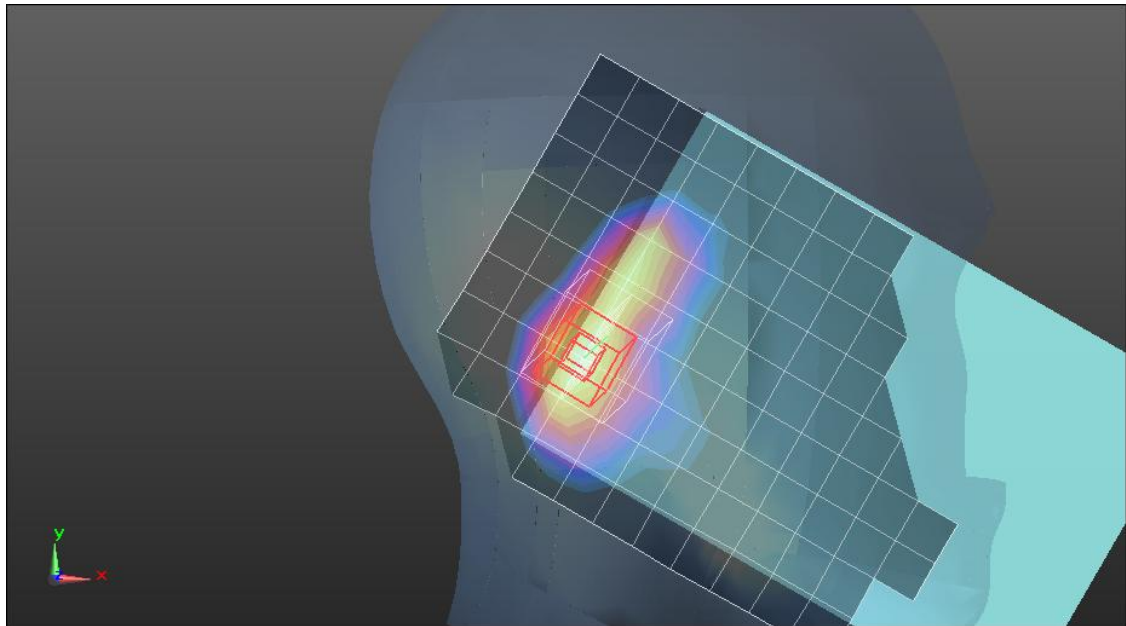
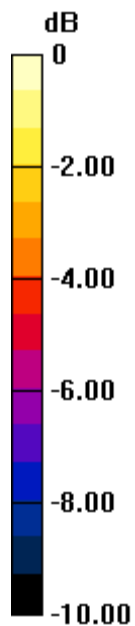
**Left/Tilt\_R99 RMC, 12.2 kbps\_M ch /Zoom Scan (5x5x7)/Cube 0:** Measurement grid: dx=8mm, dy=8mm, dz=5mm

Reference Value = 13.035 V/m; Power Drift = -0.02 dB

Peak SAR (extrapolated) = 0.3050

**SAR(1 g) = 0.182 mW/g; SAR(10 g) = 0.100 mW/g**

Maximum value of SAR (measured) = 0.239 mW/g



0 dB = 0.240mW/g = -12.40 dB mW/g

Test Laboratory: UL CCS SAR Lab B

## UMTS band II

Communication System: UMTS-FDD (WCDMA); Frequency: 1880 MHz; Duty Cycle: 1:1  
Medium parameters used:  $f = 1880$  MHz;  $\sigma = 1.428$  mho/m;  $\epsilon_r = 38.607$ ;  $\rho = 1000$  kg/m<sup>3</sup>  
Phantom section: Right Section

Room Ambient Temperature: 24.0 deg. C; Liquid Temperature: 23.0 deg. C

DASY5 Configuration:

- Area Scan setting - Find Secondary Maximum Within: 2.0 dB and with a peak SAR value greater than 0.0012W/kg
- Probe: EX3DV3 - SN3531; ConvF(8.53, 8.53, 8.53); Calibrated: 12/19/2011
- Sensor-Surface: 2.5mm (Mechanical Surface Detection)
- Electronics: DAE4 Sn1258; Calibrated: 5/2/2011
- Phantom: SAM; Type: QD000P40CD; Serial: 1629
- Measurement SW: DASY52, Version 52.8 (0); SEMCAD X Version 14.6.4 (4989)

**Right/Touch\_R99 RMC, 12.2 kbps\_M ch /Area Scan (10x13x1):** Measurement grid: dx=15mm, dy=15mm

Maximum value of SAR (measured) = 0.541 mW/g

**Right/Touch\_R99 RMC, 12.2 kbps\_M ch /Zoom Scan (5x5x7)/Cube 0:** Measurement grid:

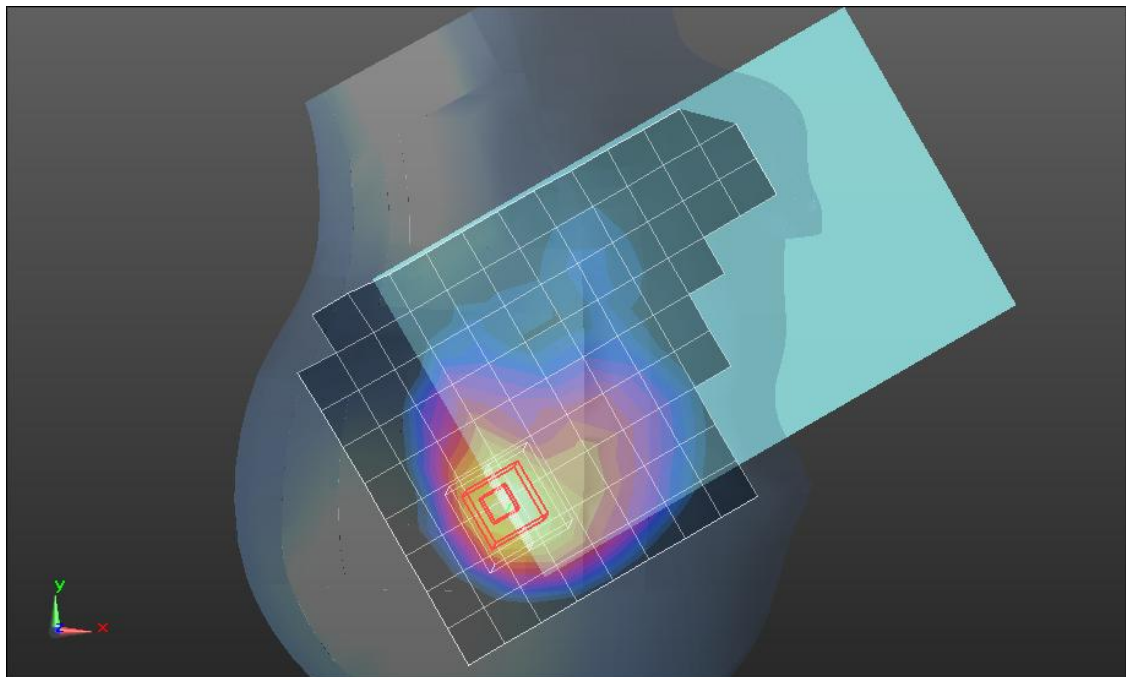
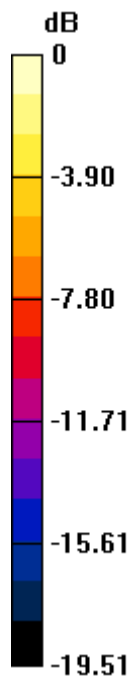
dx=8mm, dy=8mm, dz=5mm

Reference Value = 18.913 V/m; Power Drift = 0.12 dB

Peak SAR (extrapolated) = 1.0450

**SAR(1 g) = 0.543 mW/g; SAR(10 g) = 0.261 mW/g**

Maximum value of SAR (measured) = 0.746 mW/g



0 dB = 0.750mW/g = -2.50 dB mW/g

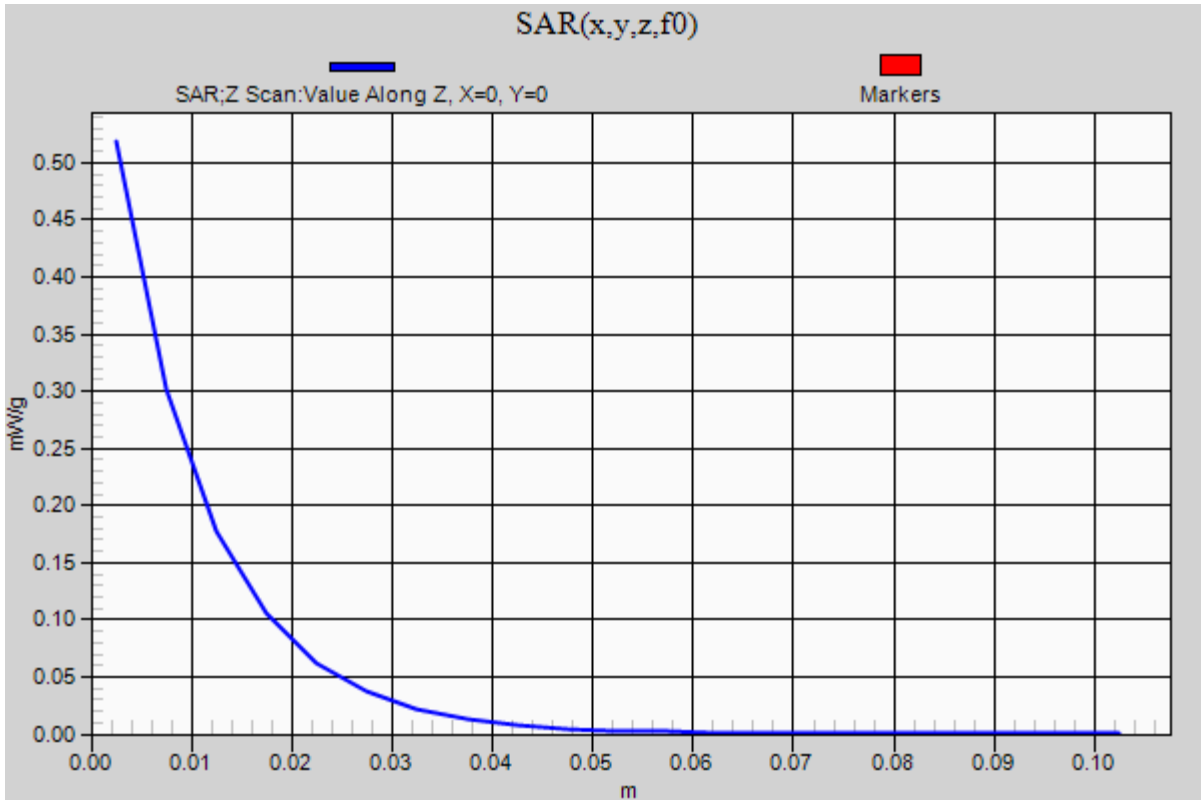
Test Laboratory: UL CCS SAR Lab B

## UMTS band II

Communication System: UMTS-FDD (WCDMA); Frequency: 1880 MHz; Duty Cycle: 1:1

**Right/Touch\_R99 RMC, 12.2 kbps\_M ch /Z Scan (1x1x21):** Measurement grid: dx=20mm, dy=20mm, dz=5mm

Maximum value of SAR (measured) = 0.518 mW/g



Test Laboratory: UL CCS SAR Lab B

## UMTS band II

Communication System: UMTS-FDD (WCDMA); Frequency: 1880 MHz; Duty Cycle: 1:1  
 Medium parameters used:  $f = 1880$  MHz;  $\sigma = 1.428$  mho/m;  $\epsilon_r = 38.607$ ;  $\rho = 1000$  kg/m<sup>3</sup>  
 Phantom section: Right Section

Room Ambient Temperature: 24.0 deg. C; Liquid Temperature: 23.0 deg. C

DASY5 Configuration:

- Area Scan setting - Find Secondary Maximum Within: 2.0 dB and with a peak SAR value greater than 0.0012W/kg
- Probe: EX3DV3 - SN3531; ConvF(8.53, 8.53, 8.53); Calibrated: 12/19/2011
- Sensor-Surface: 2.5mm (Mechanical Surface Detection)
- Electronics: DAE4 Sn1258; Calibrated: 5/2/2011
- Phantom: SAM; Type: QD000P40CD; Serial: 1629
- Measurement SW: DASY52, Version 52.8 (0); SEMCAD X Version 14.6.4 (4989)

**Right/Tilt\_R99 RMC, 12.2 kbps\_M ch /Area Scan (10x13x1):** Measurement grid: dx=15mm, dy=15mm  
 Maximum value of SAR (measured) = 0.529 mW/g

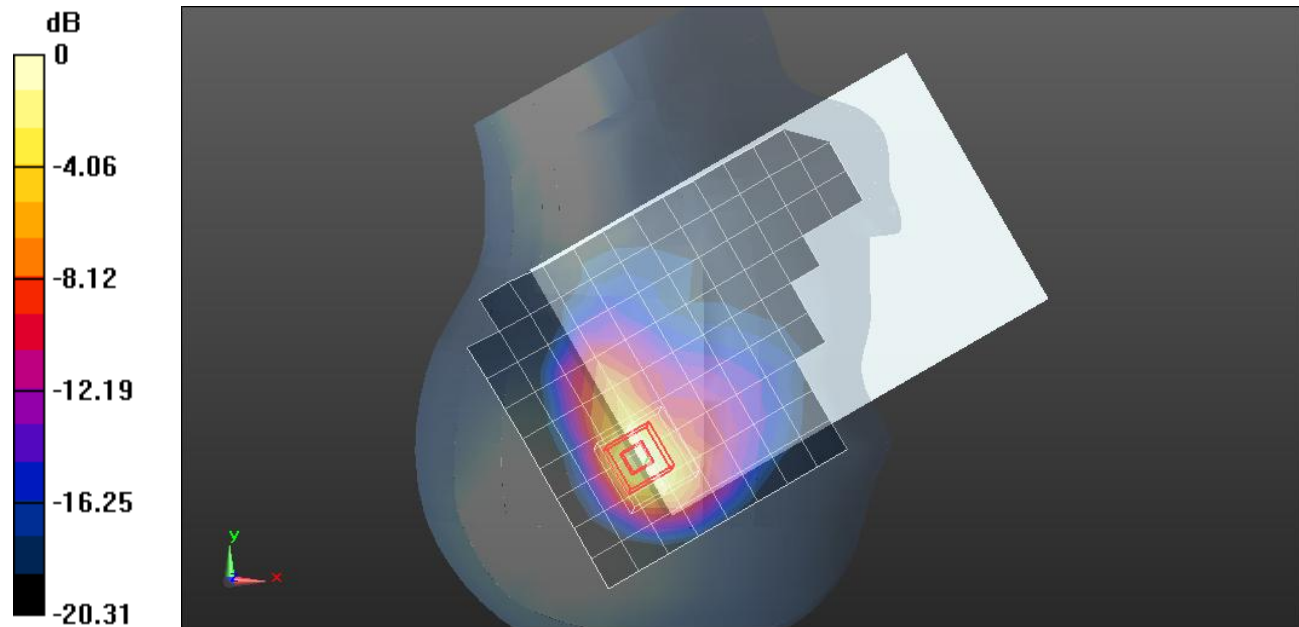
**Right/Tilt\_R99 RMC, 12.2 kbps\_M ch /Zoom Scan (5x5x7)/Cube 0:** Measurement grid: dx=8mm, dy=8mm, dz=5mm

Reference Value = 18.634 V/m; Power Drift = 0.10 dB

Peak SAR (extrapolated) = 0.9540

**SAR(1 g) = 0.503 mW/g; SAR(10 g) = 0.242 mW/g**

Maximum value of SAR (measured) = 0.671 mW/g



0 dB = 0.670mW/g = -3.48 dB mW/g

Test Laboratory: UL CCS SAR Lab B

## UMTS Band II

Communication System: UMTS-FDD (WCDMA); Frequency: 1852.4 MHz; Duty Cycle: 1:1  
Medium parameters used (interpolated):  $f = 1852.4$  MHz;  $\sigma = 1.449$  mho/m;  $\epsilon_r = 51.865$ ;  $\rho = 1000$  kg/m<sup>3</sup>  
Phantom section: Flat Section

Room Ambient Temperature: 24.0 deg. C; Liquid Temperature: 23.0 deg. C

DASY5 Configuration:

- Area Scan setting - Find Secondary Maximum Within: 2.0 dB and with a peak SAR value greater than 0.0012W/kg
- Probe: EX3DV3 - SN3531; ConvF(7.91, 7.91, 7.91); Calibrated: 12/19/2011
- Sensor-Surface: 2.5mm (Mechanical Surface Detection (Locations From Previous Scan Used)), Sensor-Surface: 2.5mm (Mechanical Surface Detection)
- Electronics: DAE4 Sn1258; Calibrated: 5/2/2011
- Phantom: ELI v5.0 (A); Type: QDOVA001BB; Serial: 1120
- Measurement SW: DASY52, Version 52.8 (0); SEMCAD X Version 14.6.4 (4989)

**Rear 8mm\_R99 RMC, 12.2 kbps /L-Ch/Area Scan (11x13x1):** Measurement grid: dx=15mm, dy=15mm

[Info: Interpolated medium parameters used for SAR evaluation.](#)

Maximum value of SAR (measured) = 0.846 mW/g

**Rear 8mm\_R99 RMC, 12.2 kbps /L-Ch/Zoom Scan (5x5x7)/Cube 0:** Measurement grid: dx=8mm, dy=8mm, dz=5mm

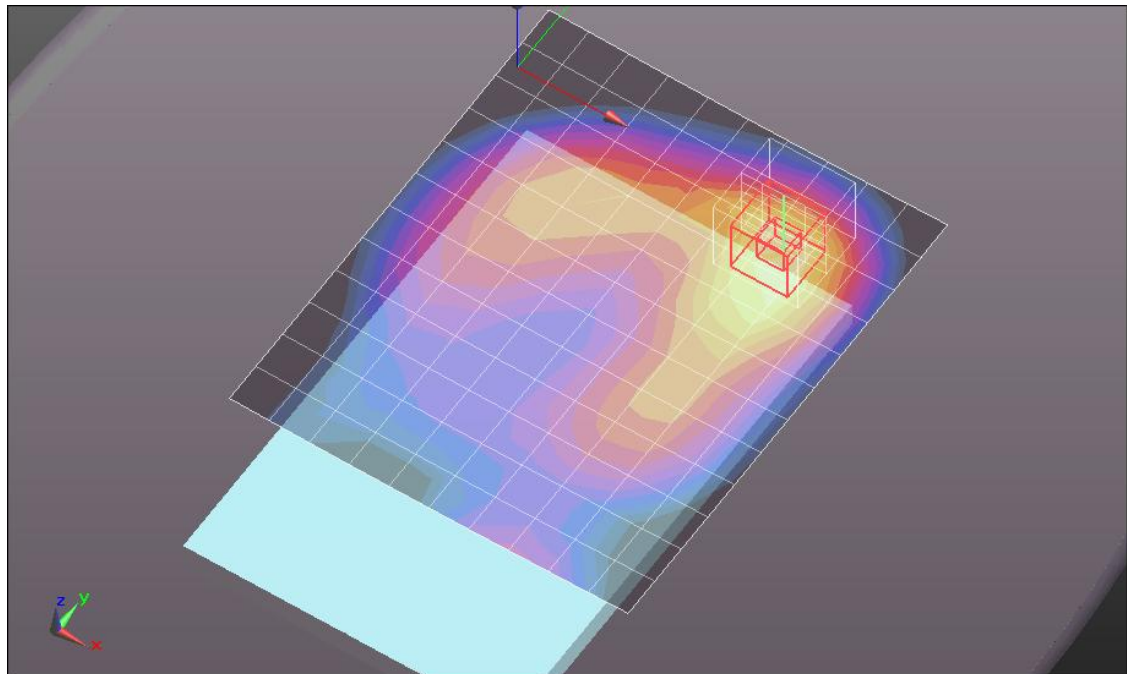
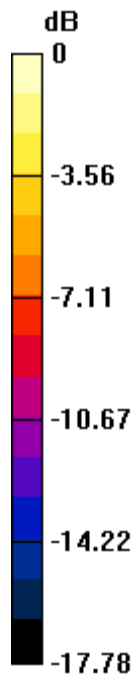
Reference Value = 24.334 V/m; Power Drift = 0.02 dB

Peak SAR (extrapolated) = 1.4200

**SAR(1 g) = 0.845 mW/g; SAR(10 g) = 0.462 mW/g**

[Info: Interpolated medium parameters used for SAR evaluation.](#)

Maximum value of SAR (measured) = 1.099 mW/g



0 dB = 1.100mW/g = 0.83 dB mW/g

Test Laboratory: UL CCS SAR Lab B

## UMTS Band II

Communication System: UMTS-FDD (WCDMA); Frequency: 1880 MHz; Duty Cycle: 1:1  
 Medium parameters used:  $f = 1880$  MHz;  $\sigma = 1.488$  mho/m;  $\epsilon_r = 51.764$ ;  $\rho = 1000$  kg/m<sup>3</sup>  
 Phantom section: Flat Section

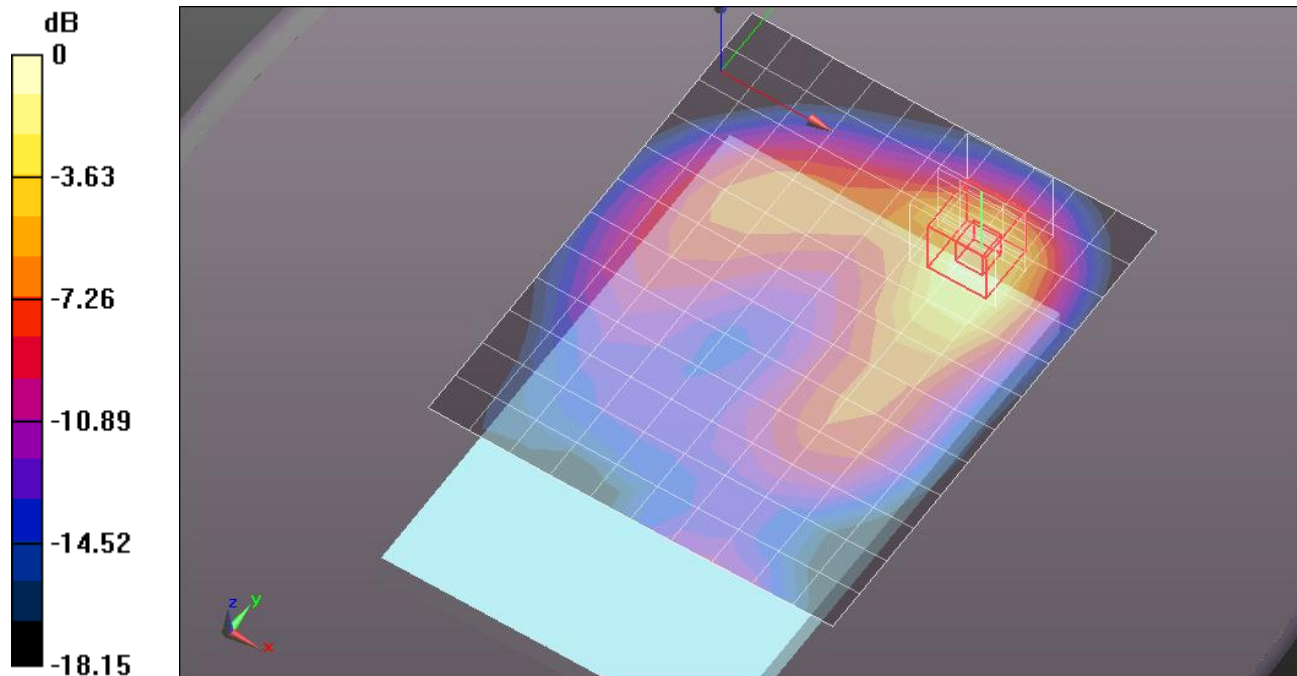
Room Ambient Temperature: 24.0 deg. C; Liquid Temperature: 23.0 deg. C

DASY5 Configuration:

- Area Scan setting - Find Secondary Maximum Within: 2.0 dB and with a peak SAR value greater than 0.0012W/kg
- Probe: EX3DV3 - SN3531; ConvF(7.91, 7.91, 7.91); Calibrated: 12/19/2011
- Sensor-Surface: 2.5mm (Mechanical Surface Detection)
- Electronics: DAE4 Sn1258; Calibrated: 5/2/2011
- Phantom: ELI v5.0 (A); Type: QDOVA001BB; Serial: 1120
- Measurement SW: DASY52, Version 52.8 (0);SEMCAD X Version 14.6.4 (4989)

**Rear 8mm\_R99 RMC, 12.2 kbps /M-Ch/Area Scan (11x13x1):** Measurement grid: dx=15mm, dy=15mm  
 Maximum value of SAR (measured) = 0.912 mW/g

**Rear 8mm\_R99 RMC, 12.2 kbps /M-Ch/Zoom Scan (5x5x7)/Cube 0:** Measurement grid: dx=8mm, dy=8mm, dz=5mm  
 Reference Value = 25.022 V/m; Power Drift = 0.01 dB  
 Peak SAR (extrapolated) = 1.4800  
**SAR(1 g) = 0.867 mW/g; SAR(10 g) = 0.472 mW/g**  
 Maximum value of SAR (measured) = 1.128 mW/g



0 dB = 1.130mW/g = 1.06 dB mW/g

Test Laboratory: UL CCS SAR Lab B

## UMTS Band II

Communication System: UMTS-FDD (WCDMA); Frequency: 1907.6 MHz; Duty Cycle: 1:1  
 Medium parameters used (interpolated):  $f = 1907.6$  MHz;  $\sigma = 1.521$  mho/m;  $\epsilon_r = 51.767$ ;  $\rho = 1000$  kg/m<sup>3</sup>  
 Phantom section: Flat Section

Room Ambient Temperature: 24.0 deg. C; Liquid Temperature: 23.0 deg. C

DASY5 Configuration:

- Area Scan setting - Find Secondary Maximum Within: 2.0 dB and with a peak SAR value greater than 0.0012W/kg
- Probe: EX3DV3 - SN3531; ConvF(7.91, 7.91, 7.91); Calibrated: 12/19/2011
- Sensor-Surface: 2.5mm (Mechanical Surface Detection (Locations From Previous Scan Used)), Sensor-Surface: 2.5mm (Mechanical Surface Detection)
- Electronics: DAE4 Sn1258; Calibrated: 5/2/2011
- Phantom: ELI v5.0 (A); Type: QDOVA001BB; Serial: 1120
- Measurement SW: DASY52, Version 52.8 (0);SEMCAD X Version 14.6.4 (4989)

**Rear 8mm\_R99 RMC, 12.2 kbps /H-Ch/Area Scan (11x13x1):** Measurement grid: dx=15mm, dy=15mm

[Info: Interpolated medium parameters used for SAR evaluation.](#)

Maximum value of SAR (measured) = 0.853 mW/g

**Rear 8mm\_R99 RMC, 12.2 kbps /H-Ch/Zoom Scan (5x5x7)/Cube 0:** Measurement grid: dx=8mm, dy=8mm, dz=5mm

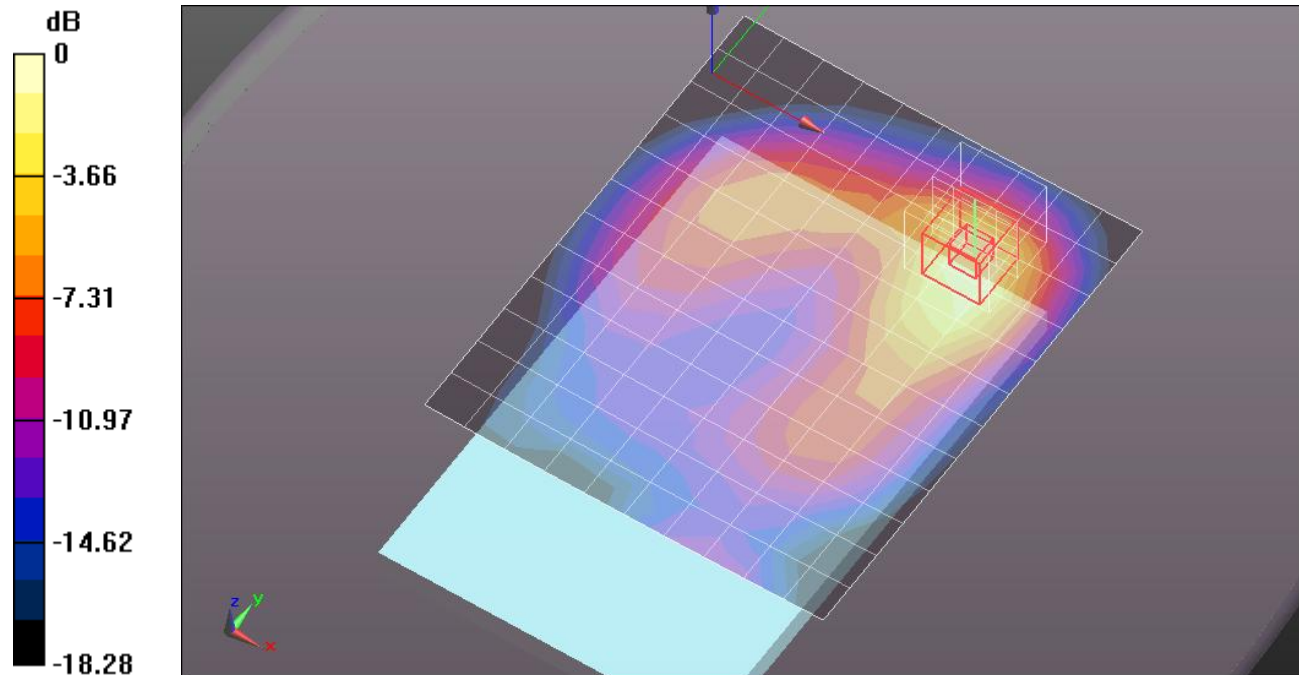
Reference Value = 23.977 V/m; Power Drift = -0.02 dB

Peak SAR (extrapolated) = 1.4910

**SAR(1 g) = 0.867 mW/g; SAR(10 g) = 0.471 mW/g**

[Info: Interpolated medium parameters used for SAR evaluation.](#)

Maximum value of SAR (measured) = 1.147 mW/g



0 dB = 1.150mW/g = 1.21 dB mW/g

Test Laboratory: UL CCS SAR Lab B

## UMTS Band II

Communication System: UMTS-FDD (WCDMA); Frequency: 1880 MHz; Duty Cycle: 1:1  
 Medium parameters used:  $f = 1880$  MHz;  $\sigma = 1.49$  mho/m;  $\epsilon_r = 51.891$ ;  $\rho = 1000$  kg/m<sup>3</sup>  
 Phantom section: Flat Section

Room Ambient Temperature: 24.0 deg. C; Liquid Temperature: 23.0 deg. C

DASY5 Configuration:

- Area Scan setting - Find Secondary Maximum Within: 2.0 dB and with a peak SAR value greater than 0.0012W/kg
- Probe: EX3DV3 - SN3531; ConvF(7.91, 7.91, 7.91); Calibrated: 12/19/2011
- Sensor-Surface: 2.5mm (Mechanical Surface Detection (Locations From Previous Scan Used)), Sensor-Surface: 2.5mm (Mechanical Surface Detection)
- Electronics: DAE4 Sn1259; Calibrated: 2/13/2012
- Phantom: ELI v5.0 (B); Type: QDOVA001BB; Serial: 1118
- Measurement SW: DASY52, Version 52.8 (0); SEMCAD X Version 14.6.4 (4989)

**Rear 8mm\_R99 RMC, 12.2 kbps/w/headset M-Ch/Area Scan (11x13x1):** Measurement grid:

$dx=15$ mm,  $dy=15$ mm

Maximum value of SAR (measured) = 1.067 mW/g

**Rear 8mm\_R99 RMC, 12.2 kbps/w/headset M-Ch/Zoom Scan (5x5x7)/Cube 0:** Measurement

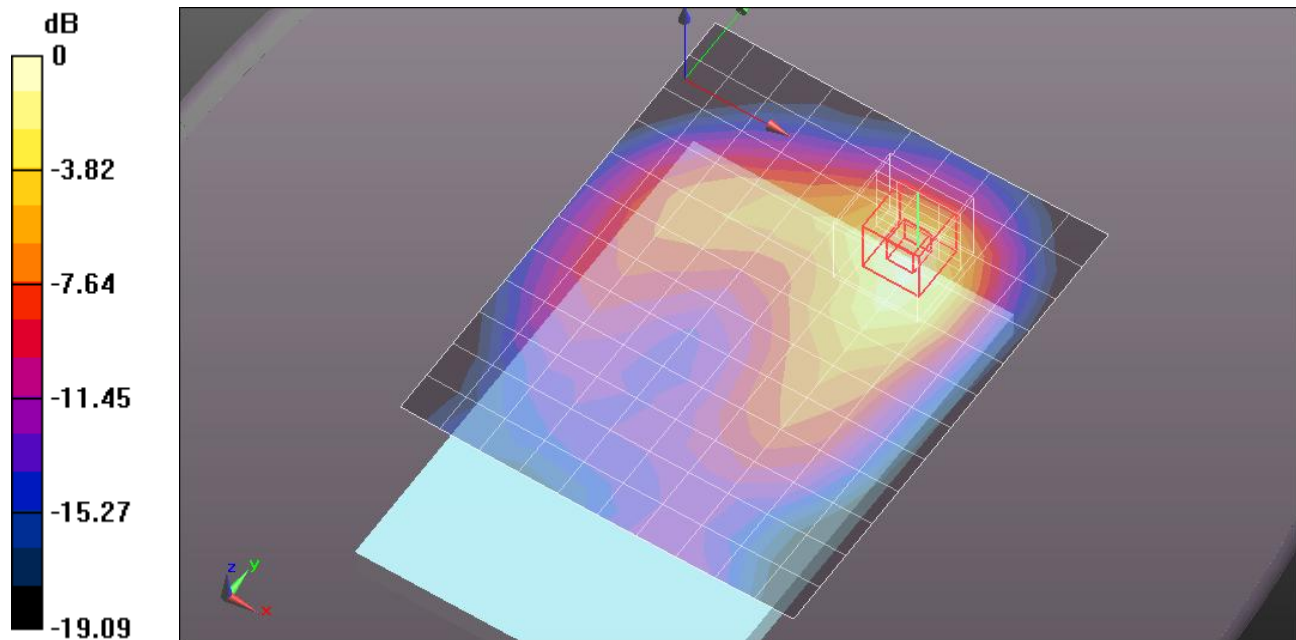
grid:  $dx=8$ mm,  $dy=8$ mm,  $dz=5$ mm

Reference Value = 26.979 V/m; Power Drift = -0.0086 dB

Peak SAR (extrapolated) = 1.5590

**SAR(1 g) = 0.899 mW/g; SAR(10 g) = 0.483 mW/g**

Maximum value of SAR (measured) = 1.128 mW/g



0 dB = 1.130mW/g = 1.06 dB mW/g

Test Laboratory: UL CCS SAR Lab B

## UMTS Band II

Communication System: UMTS-FDD (WCDMA); Frequency: 1852.4 MHz; Duty Cycle: 1:1  
 Medium parameters used (interpolated):  $f = 1852.4$  MHz;  $\sigma = 1.449$  mho/m;  $\epsilon_r = 51.865$ ;  $\rho = 1000$  kg/m<sup>3</sup>  
 Phantom section: Flat Section

Room Ambient Temperature: 24.0 deg. C; Liquid Temperature: 23.0 deg. C

DASY5 Configuration:

- Area Scan setting - Find Secondary Maximum Within: 2.0 dB and with a peak SAR value greater than 0.0012W/kg
- Probe: EX3DV3 - SN3531; ConvF(7.91, 7.91, 7.91); Calibrated: 12/19/2011
- Sensor-Surface: 2.5mm (Mechanical Surface Detection)
- Electronics: DAE4 Sn1258; Calibrated: 5/2/2011
- Phantom: ELI v5.0 (A); Type: QDOVA001BB; Serial: 1120
- Measurement SW: DASY52, Version 52.8 (0); SEMCAD X Version 14.6.4 (4989)

**Edge 1 5mm\_R99 RMC, 12.2 kbps /L-Ch/Area Scan (6x11x1):** Measurement grid: dx=15mm, dy=15mm

[Info: Interpolated medium parameters used for SAR evaluation.](#)

Maximum value of SAR (measured) = 0.922 mW/g

**Edge 1 5mm\_R99 RMC, 12.2 kbps /L-Ch/Zoom Scan (5x5x7)/Cube 0:** Measurement grid:

dx=8mm, dy=8mm, dz=5mm

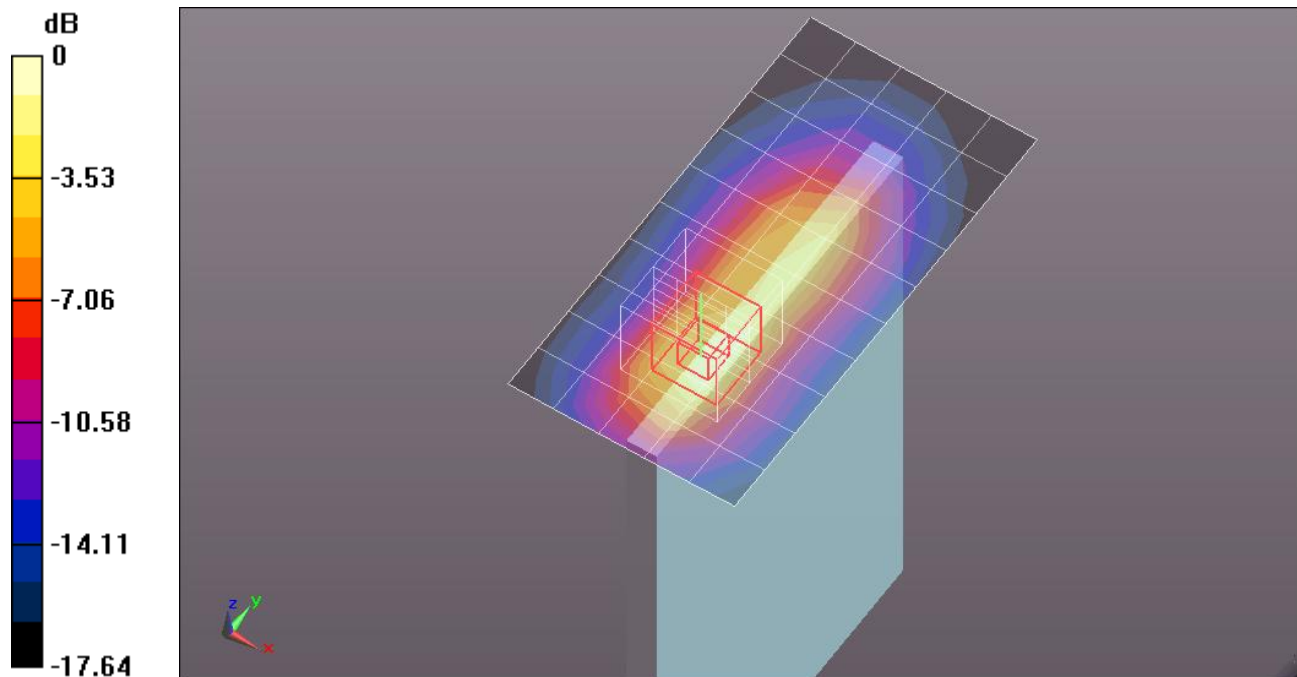
Reference Value = 25.390 V/m; Power Drift = 0.15 dB

Peak SAR (extrapolated) = 1.6790

**SAR(1 g) = 0.965 mW/g; SAR(10 g) = 0.505 mW/g**

[Info: Interpolated medium parameters used for SAR evaluation.](#)

Maximum value of SAR (measured) = 1.293 mW/g



0 dB = 1.290mW/g = 2.21 dB mW/g

Test Laboratory: UL CCS SAR Lab B

## UMTS Band II

Communication System: UMTS-FDD (WCDMA); Frequency: 1880 MHz; Duty Cycle: 1:1  
 Medium parameters used:  $f = 1880$  MHz;  $\sigma = 1.488$  mho/m;  $\epsilon_r = 51.764$ ;  $\rho = 1000$  kg/m<sup>3</sup>  
 Phantom section: Flat Section

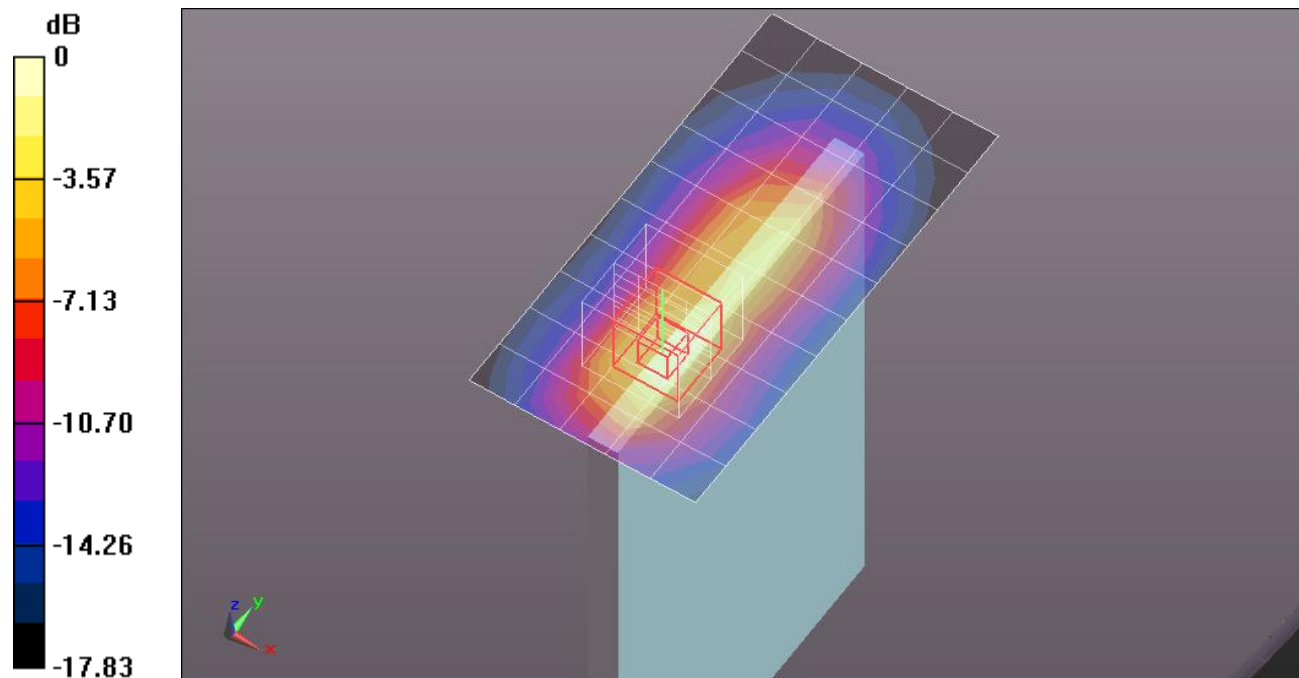
Room Ambient Temperature: 24.0 deg. C; Liquid Temperature: 23.0 deg. C

DASY5 Configuration:

- Area Scan setting - Find Secondary Maximum Within: 2.0 dB and with a peak SAR value greater than 0.0012W/kg
- Probe: EX3DV3 - SN3531; ConvF(7.91, 7.91, 7.91); Calibrated: 12/19/2011
- Sensor-Surface: 2.5mm (Mechanical Surface Detection)
- Electronics: DAE4 Sn1258; Calibrated: 5/2/2011
- Phantom: ELI v5.0 (A); Type: QDOVA001BB; Serial: 1120
- Measurement SW: DASY52, Version 52.8 (0);SEMCAD X Version 14.6.4 (4989)

**Edge 1 5mm\_R99 RMC, 12.2 kbps /M-Ch/Area Scan (6x11x1):** Measurement grid: dx=15mm, dy=15mm  
 Maximum value of SAR (measured) = 0.909 mW/g

**Edge 1 5mm\_R99 RMC, 12.2 kbps /M-Ch/Zoom Scan (5x5x7)/Cube 0:** Measurement grid: dx=8mm, dy=8mm, dz=5mm  
 Reference Value = 24.828 V/m; Power Drift = 0.10 dB  
 Peak SAR (extrapolated) = 1.6700  
**SAR(1 g) = 0.953 mW/g; SAR(10 g) = 0.495 mW/g**  
 Maximum value of SAR (measured) = 1.282 mW/g



0 dB = 1.280mW/g = 2.14 dB mW/g

Test Laboratory: UL CCS SAR Lab B

## UMTS Band II

Communication System: UMTS-FDD (WCDMA); Frequency: 1907.6 MHz; Duty Cycle: 1:1  
 Medium parameters used (interpolated):  $f = 1907.6$  MHz;  $\sigma = 1.521$  mho/m;  $\epsilon_r = 51.767$ ;  $\rho = 1000$  kg/m<sup>3</sup>  
 Phantom section: Flat Section

Room Ambient Temperature: 24.0 deg. C; Liquid Temperature: 23.0 deg. C

DASY5 Configuration:

- Area Scan setting - Find Secondary Maximum Within: 2.0 dB and with a peak SAR value greater than 0.0012W/kg
- Probe: EX3DV3 - SN3531; ConvF(7.91, 7.91, 7.91); Calibrated: 12/19/2011
- Sensor-Surface: 2.5mm (Mechanical Surface Detection)
- Electronics: DAE4 Sn1258; Calibrated: 5/2/2011
- Phantom: ELI v5.0 (A); Type: QDOVA001BB; Serial: 1120
- Measurement SW: DASY52, Version 52.8 (0); SEMCAD X Version 14.6.4 (4989)

**Edge 1 5mm\_R99 RMC, 12.2 kbps /H-Ch/Area Scan (6x11x1):** Measurement grid: dx=15mm, dy=15mm

[Info: Interpolated medium parameters used for SAR evaluation.](#)

Maximum value of SAR (measured) = 0.941 mW/g

**Edge 1 5mm\_R99 RMC, 12.2 kbps /H-Ch/Zoom Scan (5x5x7)/Cube 0:** Measurement grid:

dx=8mm, dy=8mm, dz=5mm

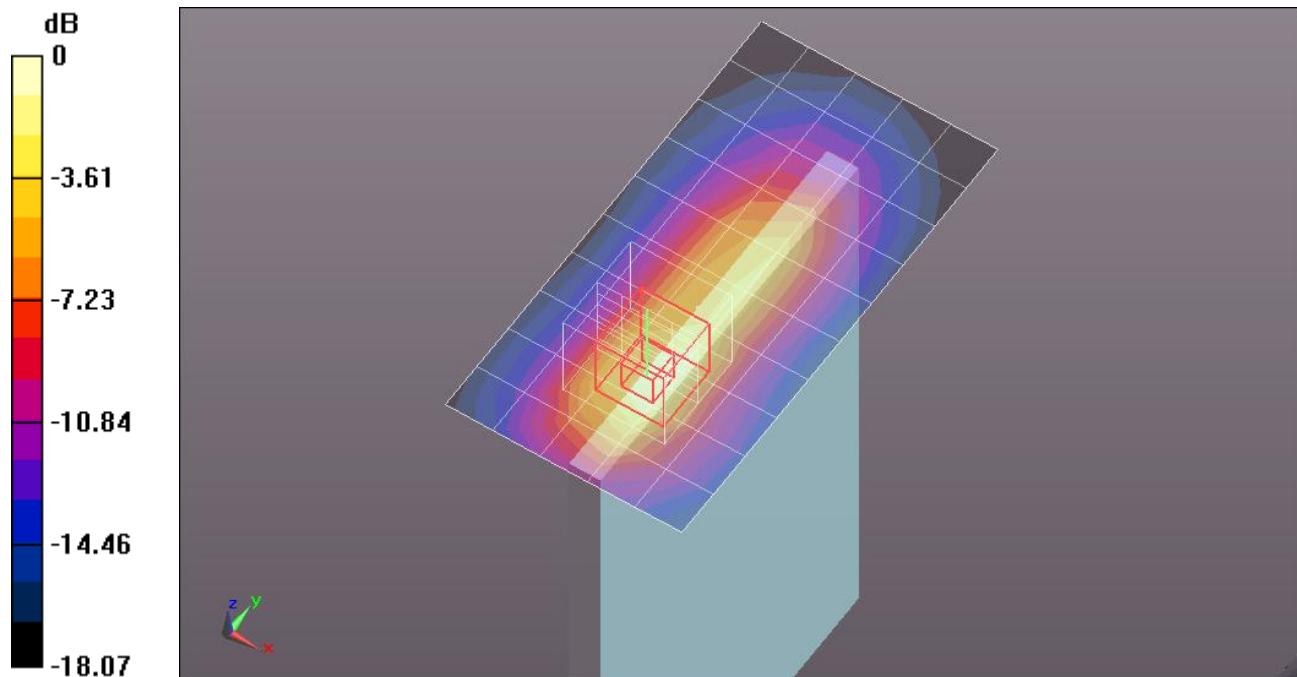
Reference Value = 24.939 V/m; Power Drift = 0.09 dB

Peak SAR (extrapolated) = 1.7390

**SAR(1 g) = 0.988 mW/g; SAR(10 g) = 0.511 mW/g**

[Info: Interpolated medium parameters used for SAR evaluation.](#)

Maximum value of SAR (measured) = 1.330 mW/g



0 dB = 1.330mW/g = 2.48 dB mW/g

Test Laboratory: UL CCS SAR Lab B

## UMTS Band II

Communication System: UMTS-FDD (WCDMA); Frequency: 1852.4 MHz; Duty Cycle: 1:1  
 Medium parameters used (interpolated):  $f = 1852.4$  MHz;  $\sigma = 1.452$  mho/m;  $\epsilon_r = 52.284$ ;  $\rho = 1000$  kg/m<sup>3</sup>  
 Phantom section: Flat Section

Room Ambient Temperature: 24.0 deg. C; Liquid Temperature: 23.0 deg. C

DASY5 Configuration:

- Area Scan setting - Find Secondary Maximum Within: 2.0 dB and with a peak SAR value greater than 0.0012W/kg
- Probe: EX3DV3 - SN3531; ConvF(7.91, 7.91, 7.91); Calibrated: 12/19/2011
- Sensor-Surface: 2.5mm (Mechanical Surface Detection (Locations From Previous Scan Used)), Sensor-Surface: 2.5mm (Mechanical Surface Detection)
- Electronics: DAE4 Sn1258; Calibrated: 5/2/2011
- Phantom: ELI v5.0 (B); Type: QDOVA001BB; Serial: 1118
- Measurement SW: DASY52, Version 52.8 (0); SEMCAD X Version 14.6.4 (4989)

**Edge 1 at 45deg\_R99 RMC, 12.2 kbps /L ch/Area Scan (9x13x1):** Measurement grid: dx=15mm, dy=15mm

[Info: Interpolated medium parameters used for SAR evaluation.](#)

Maximum value of SAR (measured) = 1.304 mW/g

**Edge 1 at 45deg\_R99 RMC, 12.2 kbps /L ch/Zoom Scan (5x5x7)/Cube 0:** Measurement grid:

dx=8mm, dy=8mm, dz=5mm

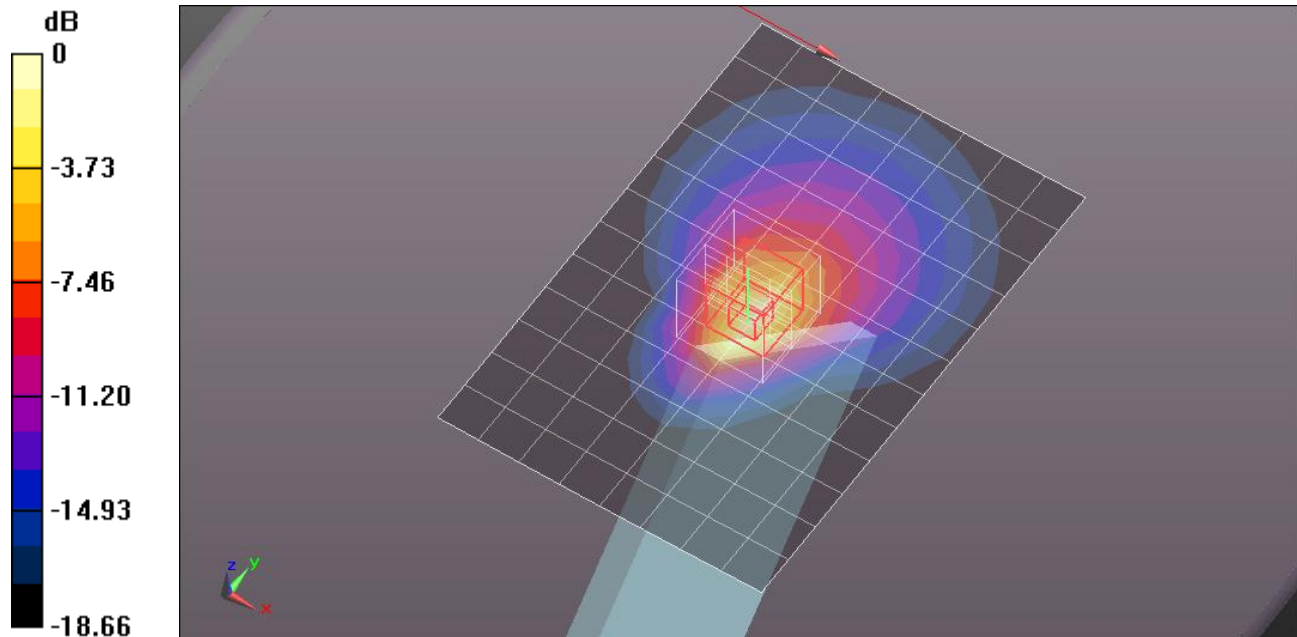
Reference Value = 30.341 V/m; Power Drift = -0.01 dB

Peak SAR (extrapolated) = 1.9880

**SAR(1 g) = 1.11 mW/g; SAR(10 g) = 0.567 mW/g**

[Info: Interpolated medium parameters used for SAR evaluation.](#)

Maximum value of SAR (measured) = 1.486 mW/g



0 dB = 1.490mW/g = 3.46 dB mW/g

Test Laboratory: UL CCS SAR Lab B

## UMTS Band II

Communication System: UMTS-FDD (WCDMA); Frequency: 1880 MHz; Duty Cycle: 1:1  
 Medium parameters used:  $f = 1880$  MHz;  $\sigma = 1.478$  mho/m;  $\epsilon_r = 52.197$ ;  $\rho = 1000$  kg/m<sup>3</sup>  
 Phantom section: Flat Section

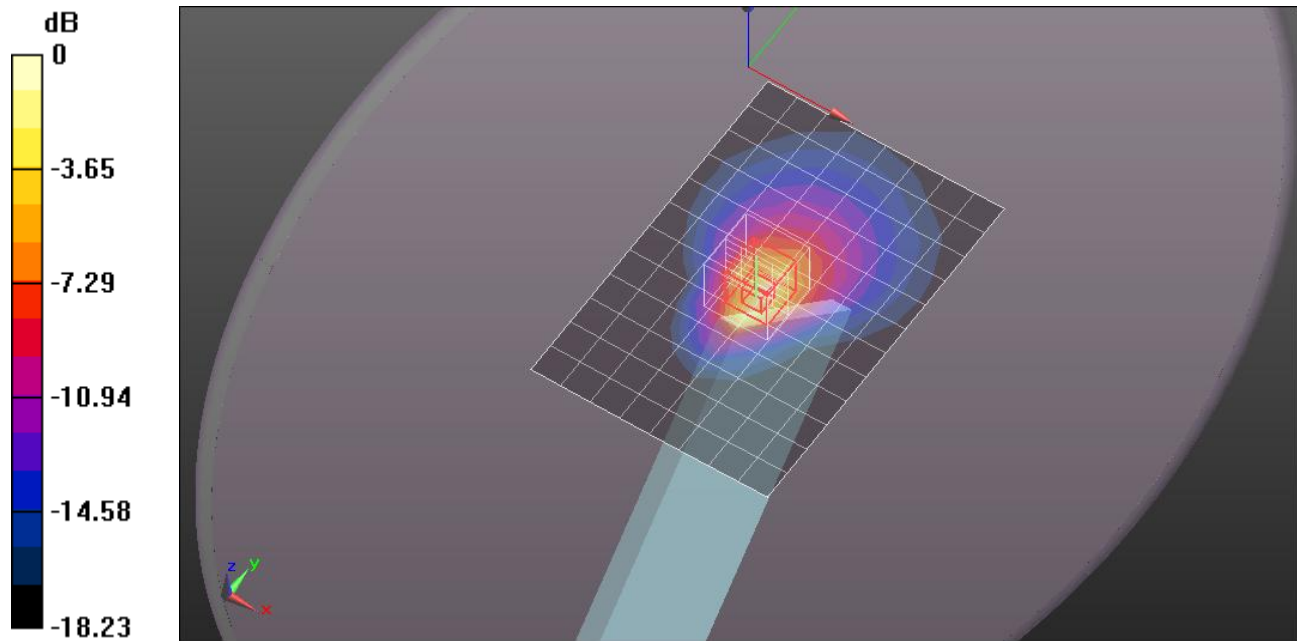
Room Ambient Temperature: 24.0 deg. C; Liquid Temperature: 23.0 deg. C

DASY5 Configuration:

- Area Scan setting - Find Secondary Maximum Within: 2.0 dB and with a peak SAR value greater than 0.0012W/kg
- Probe: EX3DV3 - SN3531; ConvF(7.91, 7.91, 7.91); Calibrated: 12/19/2011
- Sensor-Surface: 2.5mm (Mechanical Surface Detection)
- Electronics: DAE4 Sn1258; Calibrated: 5/2/2011
- Phantom: ELI v5.0 (B); Type: QDOVA001BB; Serial: 1118
- Measurement SW: DASY52, Version 52.8 (0); SEMCAD X Version 14.6.4 (4989)

**Edge 1 at 45deg\_R99 RMC, 12.2 kbps /M ch/Area Scan (9x13x1):** Measurement grid: dx=15mm, dy=15mm  
 Maximum value of SAR (measured) = 1.260 mW/g

**Edge 1 at 45deg\_R99 RMC, 12.2 kbps /M ch/Zoom Scan (5x5x7)/Cube 0:** Measurement grid: dx=8mm, dy=8mm, dz=5mm  
 Reference Value = 29.482 V/m; Power Drift = 0.00018 dB  
 Peak SAR (extrapolated) = 1.9050  
**SAR(1 g) = 1.07 mW/g; SAR(10 g) = 0.541 mW/g**  
 Maximum value of SAR (measured) = 1.460 mW/g



0 dB = 1.460mW/g = 3.29 dB mW/g

Test Laboratory: UL CCS SAR Lab B

## UMTS Band II

Communication System: UMTS-FDD (WCDMA); Frequency: 1907.6 MHz; Duty Cycle: 1:1  
 Medium parameters used (interpolated):  $f = 1907.6$  MHz;  $\sigma = 1.513$  mho/m;  $\epsilon_r = 52.087$ ;  $\rho = 1000$  kg/m<sup>3</sup>  
 Phantom section: Flat Section

Room Ambient Temperature: 24.0 deg. C; Liquid Temperature: 23.0 deg. C

DASY5 Configuration:

- Area Scan setting - Find Secondary Maximum Within: 2.0 dB and with a peak SAR value greater than 0.0012W/kg
- Probe: EX3DV3 - SN3531; ConvF(7.91, 7.91, 7.91); Calibrated: 12/19/2011
- Sensor-Surface: 2.5mm (Mechanical Surface Detection (Locations From Previous Scan Used)), Sensor-Surface: 2.5mm (Mechanical Surface Detection)
- Electronics: DAE4 Sn1258; Calibrated: 5/2/2011
- Phantom: ELI v5.0 (B); Type: QDOVA001BB; Serial: 1118
- Measurement SW: DASY52, Version 52.8 (0); SEMCAD X Version 14.6.4 (4989)

**Edge 1 at 45deg\_R99 RMC, 12.2 kbps /H ch/Area Scan (9x13x1):** Measurement grid: dx=15mm, dy=15mm

[Info: Interpolated medium parameters used for SAR evaluation.](#)

Maximum value of SAR (measured) = 1.296 mW/g

**Edge 1 at 45deg\_R99 RMC, 12.2 kbps /H ch/Zoom Scan (5x5x7)/Cube 0:** Measurement grid:

dx=8mm, dy=8mm, dz=5mm

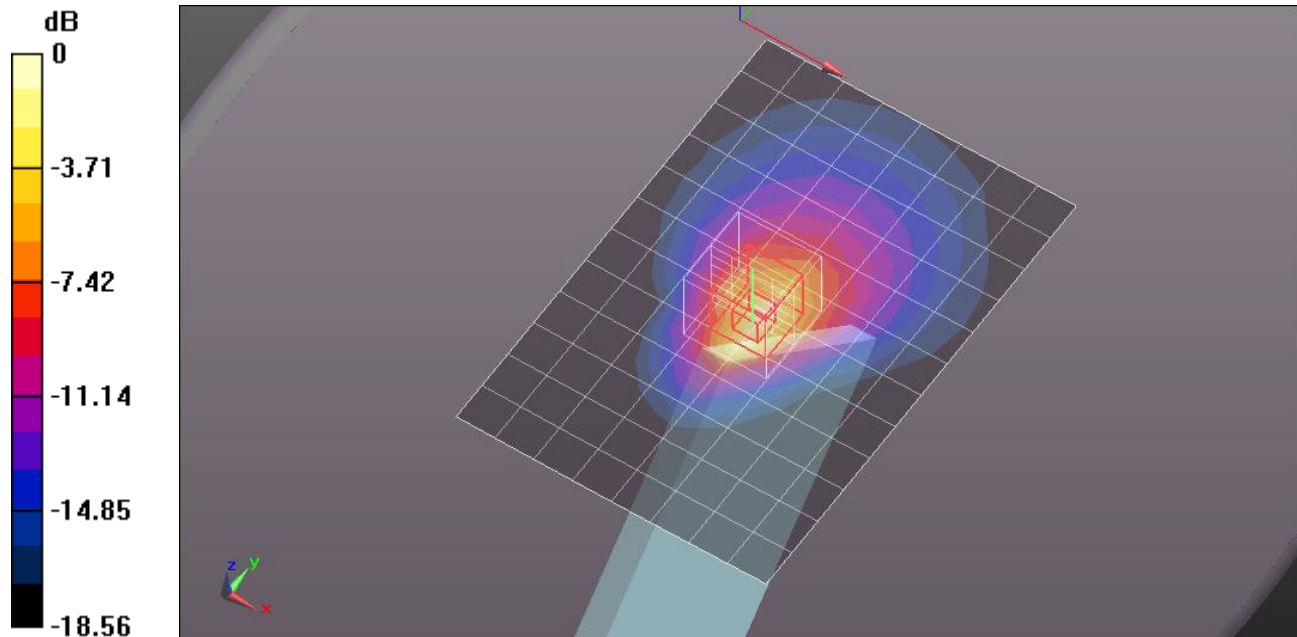
Reference Value = 29.726 V/m; Power Drift = -0.0066 dB

Peak SAR (extrapolated) = 1.9930

**SAR(1 g) = 1.11 mW/g; SAR(10 g) = 0.558 mW/g**

[Info: Interpolated medium parameters used for SAR evaluation.](#)

Maximum value of SAR (measured) = 1.520 mW/g



0 dB = 1.520mW/g = 3.64 dB mW/g

Test Laboratory: UL CCS SAR Lab B

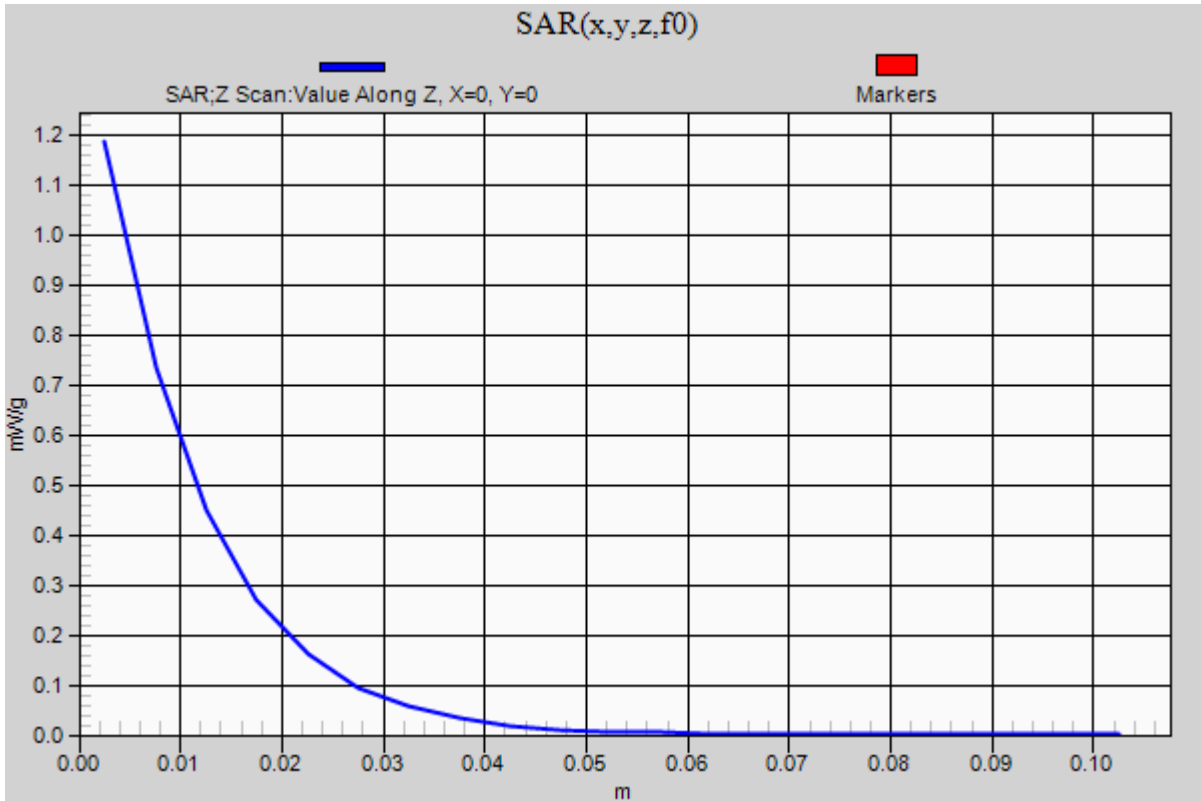
## UMTS Band II

Communication System: UMTS-FDD (WCDMA); Frequency: 1907.6 MHz; Duty Cycle: 1:1

**Edge 1 at 45deg\_R99 RMC, 12.2 kbps /H ch/Z Scan (1x1x21):** Measurement grid: dx=20mm, dy=20mm, dz=5mm

Info: [Interpolated medium parameters used for SAR evaluation.](#)

Maximum value of SAR (measured) = 1.187 mW/g



Test Laboratory: UL CCS SAR Lab B

## UMTS Band II

Communication System: UMTS-FDD (WCDMA); Frequency: 1852.4 MHz; Duty Cycle: 1:1  
 Medium parameters used (interpolated):  $f = 1852.4$  MHz;  $\sigma = 1.49$  mho/m;  $\epsilon_r = 51.505$ ;  $\rho = 1000$  kg/m<sup>3</sup>  
 Phantom section: Flat Section

Room Ambient Temperature: 24.0 deg. C; Liquid Temperature: 23.0 deg. C

DASY5 Configuration:

- Area Scan setting - Find Secondary Maximum Within: 2.0 dB and with a peak SAR value greater than 0.0012W/kg
- Probe: EX3DV3 - SN3531; ConvF(7.91, 7.91, 7.91); Calibrated: 12/19/2011
- Sensor-Surface: 4mm (Mechanical Surface Detection (Locations From Previous Scan Used)), Sensor-Surface: 4mm (Mechanical Surface Detection)
- Electronics: DAE4 Sn1258; Calibrated: 5/2/2011
- Phantom: ELI v5.0 (A); Type: QDOVA001BB; Serial: 1120
- Measurement SW: DASY52, Version 52.8 (0); SEMCAD X Version 14.6.4 (4989)

**Edge 4\_R99 RMC, 12.2 kbps /L-Ch/Area Scan (8x18x1):** Measurement grid: dx=15mm, dy=15mm

[Info: Interpolated medium parameters used for SAR evaluation.](#)

Maximum value of SAR (measured) = 0.669 mW/g

**Edge 4\_R99 RMC, 12.2 kbps /L-Ch/Zoom Scan (5x5x7)/Cube 0:** Measurement grid: dx=8mm, dy=8mm, dz=5mm

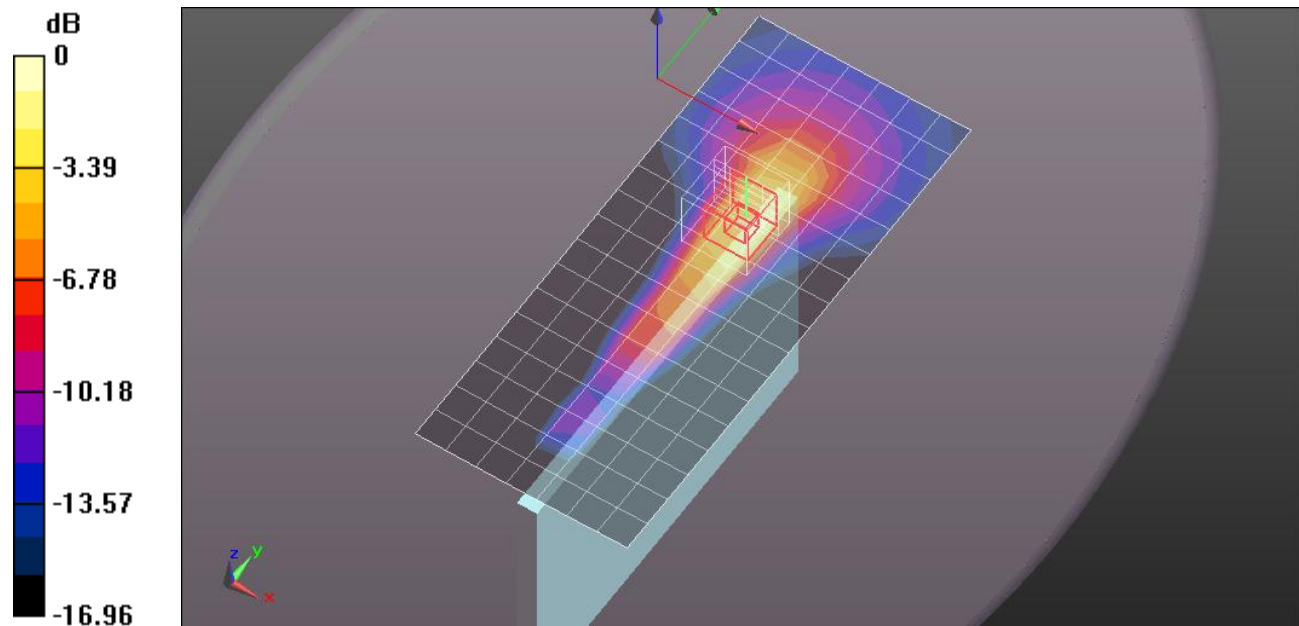
Reference Value = 14.618 V/m; Power Drift = 0.10 dB

Peak SAR (extrapolated) = 1.7320

**SAR(1 g) = 0.892 mW/g; SAR(10 g) = 0.447 mW/g**

[Info: Interpolated medium parameters used for SAR evaluation.](#)

Maximum value of SAR (measured) = 1.017 mW/g



0 dB = 1.020mW/g = 0.17 dB mW/g

Test Laboratory: UL CCS SAR Lab B

## UMTS Band II

Communication System: UMTS-FDD (WCDMA); Frequency: 1880 MHz; Duty Cycle: 1:1  
 Medium parameters used:  $f = 1880$  MHz;  $\sigma = 1.518$  mho/m;  $\epsilon_r = 51.356$ ;  $\rho = 1000$  kg/m<sup>3</sup>  
 Phantom section: Flat Section

Room Ambient Temperature: 24.0 deg. C; Liquid Temperature: 23.0 deg. C

DASY5 Configuration:

- Area Scan setting - Find Secondary Maximum Within: 2.0 dB and with a peak SAR value greater than 0.0012W/kg
- Probe: EX3DV3 - SN3531; ConvF(7.91, 7.91, 7.91); Calibrated: 12/19/2011
- Sensor-Surface: 4mm (Mechanical Surface Detection)
- Electronics: DAE4 Sn1258; Calibrated: 5/2/2011
- Phantom: ELI v5.0 (A); Type: QDOVA001BB; Serial: 1120
- Measurement SW: DASY52, Version 52.8 (0); SEMCAD X Version 14.6.4 (4989)

**Edge 4\_R99 RMC, 12.2 kbps /M-Ch/Area Scan (8x18x1):** Measurement grid: dx=15mm, dy=15mm  
 Maximum value of SAR (measured) = 0.654 mW/g

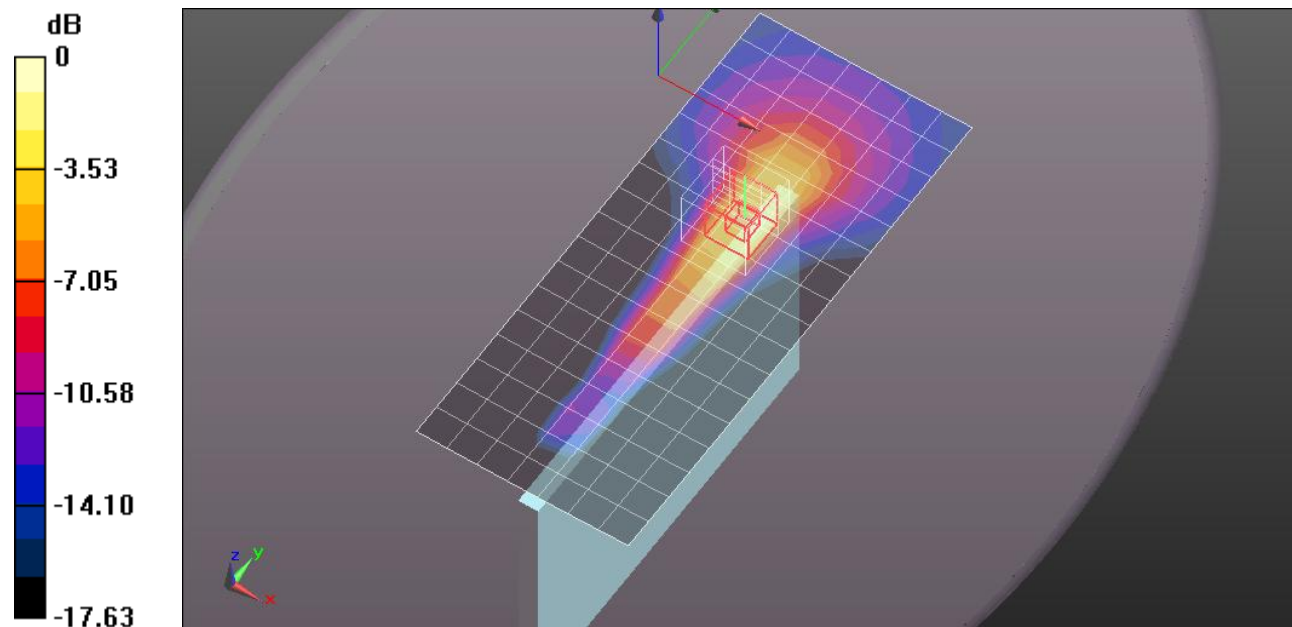
**Edge 4\_R99 RMC, 12.2 kbps /M-Ch/Zoom Scan (5x5x7)/Cube 0:** Measurement grid: dx=8mm, dy=8mm, dz=5mm

Reference Value = 14.546 V/m; Power Drift = 0.10 dB

Peak SAR (extrapolated) = 1.7960

**SAR(1 g) = 0.902 mW/g; SAR(10 g) = 0.445 mW/g**

Maximum value of SAR (measured) = 1.042 mW/g



0 dB = 1.040mW/g = 0.34 dB mW/g

Test Laboratory: UL CCS SAR Lab B

## UMTS Band II

Communication System: UMTS-FDD (WCDMA); Frequency: 1907.6 MHz; Duty Cycle: 1:1  
 Medium parameters used (interpolated):  $f = 1907.6$  MHz;  $\sigma = 1.555$  mho/m;  $\epsilon_r = 51.262$ ;  $\rho = 1000$  kg/m<sup>3</sup>  
 Phantom section: Flat Section

Room Ambient Temperature: 24.0 deg. C; Liquid Temperature: 23.0 deg. C

DASY5 Configuration:

- Area Scan setting - Find Secondary Maximum Within: 2.0 dB and with a peak SAR value greater than 0.0012W/kg
- Probe: EX3DV3 - SN3531; ConvF(7.91, 7.91, 7.91); Calibrated: 12/19/2011
- Sensor-Surface: 4mm (Mechanical Surface Detection (Locations From Previous Scan Used)), Sensor-Surface: 4mm (Mechanical Surface Detection)
- Electronics: DAE4 Sn1258; Calibrated: 5/2/2011
- Phantom: ELI v5.0 (A); Type: QDOVA001BB; Serial: 1120
- Measurement SW: DASY52, Version 52.8 (0); SEMCAD X Version 14.6.4 (4989)

**Edge 4\_R99 RMC, 12.2 kbps /H-Ch/Area Scan (8x18x1):** Measurement grid: dx=15mm, dy=15mm

[Info: Interpolated medium parameters used for SAR evaluation.](#)

Maximum value of SAR (measured) = 0.654 mW/g

**Edge 4\_R99 RMC, 12.2 kbps /H-Ch/Zoom Scan (5x5x7)/Cube 0:** Measurement grid: dx=8mm,

dy=8mm, dz=5mm

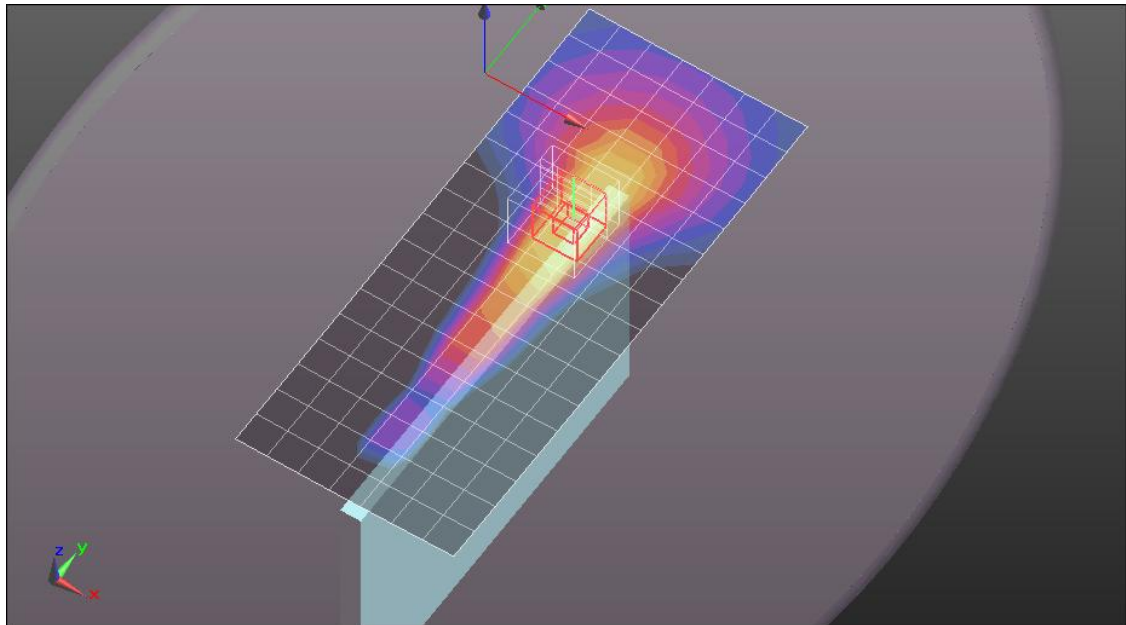
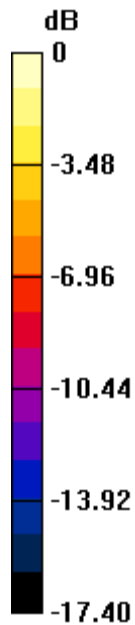
Reference Value = 14.095 V/m; Power Drift = 0.06 dB

Peak SAR (extrapolated) = 1.7020

**SAR(1 g) = 0.866 mW/g; SAR(10 g) = 0.431 mW/g**

[Info: Interpolated medium parameters used for SAR evaluation.](#)

Maximum value of SAR (measured) = 0.997 mW/g



0 dB = 1.000mW/g = 0 dB mW/g

Test Laboratory: UL CCS SAR Lab B

## UMTS Band II

Communication System: UMTS-FDD (WCDMA); Frequency: 1880 MHz; Duty Cycle: 1:1  
 Medium parameters used:  $f = 1880$  MHz;  $\sigma = 1.518$  mho/m;  $\epsilon_r = 51.356$ ;  $\rho = 1000$  kg/m<sup>3</sup>  
 Phantom section: Flat Section

Room Ambient Temperature: 24.0 deg. C; Liquid Temperature: 23.0 deg. C

DASY5 Configuration:

- Area Scan setting - Find Secondary Maximum Within: 2.0 dB and with a peak SAR value greater than 0.0012W/kg
- Probe: EX3DV3 - SN3531; ConvF(7.91, 7.91, 7.91); Calibrated: 12/19/2011
- Sensor-Surface: 2.5mm (Mechanical Surface Detection (Locations From Previous Scan Used)), Sensor-Surface: 2.5mm (Mechanical Surface Detection)
- Electronics: DAE4 Sn1258; Calibrated: 5/2/2011
- Phantom: ELI v5.0 (A); Type: QDOVA001BB; Serial: 1120
- Measurement SW: DASY52, Version 52.8 (0); SEMCAD X Version 14.6.4 (4989)

**Rear with power back off\_R99 RMC, 12.2 kbps /M ch/Area Scan (11x13x1):** Measurement grid:

$dx=15$ mm,  $dy=15$ mm

Maximum value of SAR (measured) = 0.786 mW/g

**Rear with power back off\_R99 RMC, 12.2 kbps /M ch/Zoom Scan (5x5x7)/Cube 0:**

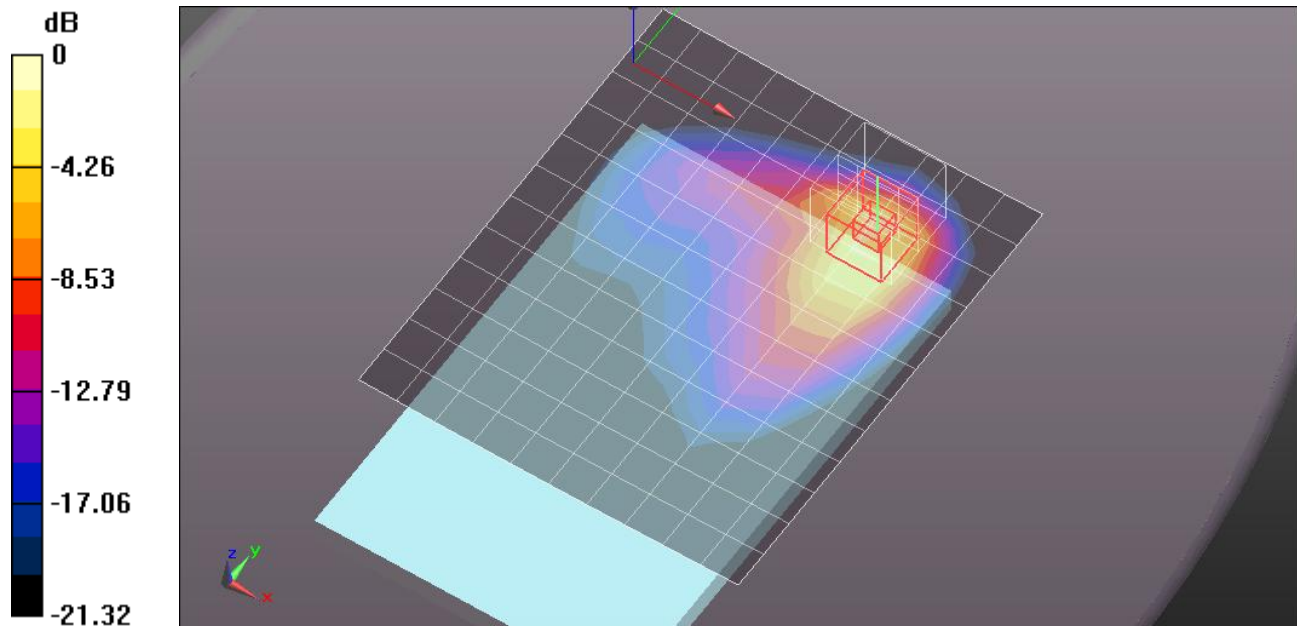
Measurement grid:  $dx=8$ mm,  $dy=8$ mm,  $dz=5$ mm

Reference Value = 22.683 V/m; Power Drift = 0.06 dB

Peak SAR (extrapolated) = 1.4320

**SAR(1 g) = 0.716 mW/g; SAR(10 g) = 0.350 mW/g**

Maximum value of SAR (measured) = 1.032 mW/g



0 dB = 1.030mW/g = 0.26 dB mW/g

Test Laboratory: UL CCS SAR Lab B

## UMTS Band II

Communication System: UMTS-FDD (WCDMA); Frequency: 1880 MHz; Duty Cycle: 1:1  
 Medium parameters used:  $f = 1880$  MHz;  $\sigma = 1.518$  mho/m;  $\epsilon_r = 51.356$ ;  $\rho = 1000$  kg/m<sup>3</sup>  
 Phantom section: Flat Section

Room Ambient Temperature: 24.0 deg. C; Liquid Temperature: 23.0 deg. C

DASY5 Configuration:

- Area Scan setting - Find Secondary Maximum Within: 2.0 dB and with a peak SAR value greater than 0.0012W/kg
- Probe: EX3DV3 - SN3531; ConvF(7.91, 7.91, 7.91); Calibrated: 12/19/2011
- Sensor-Surface: 2.5mm (Mechanical Surface Detection)
- Electronics: DAE4 Sn1258; Calibrated: 5/2/2011
- Phantom: ELI v5.0 (A); Type: QDOVA001BB; Serial: 1120
- Measurement SW: DASY52, Version 52.8 (0); SEMCAD X Version 14.6.4 (4989)

### Edge 1 with power back off\_R99 RMC, 12.2 kbps /M ch/Area Scan (6x11x1): Measurement

grid: dx=15mm, dy=15mm

Maximum value of SAR (measured) = 0.616 mW/g

### Edge 1 with power back off\_R99 RMC, 12.2 kbps /M ch/Zoom Scan (5x5x7)/Cube 0:

Measurement grid: dx=8mm, dy=8mm, dz=5mm

Reference Value = 20.325 V/m; Power Drift = -0.06 dB

Peak SAR (extrapolated) = 0.9860

**SAR(1 g) = 0.501 mW/g; SAR(10 g) = 0.229 mW/g**

Maximum value of SAR (measured) = 0.721 mW/g

### Edge 1 with power back off\_R99 RMC, 12.2 kbps /M ch/Zoom Scan 2 (5x5x7)/Cube 0:

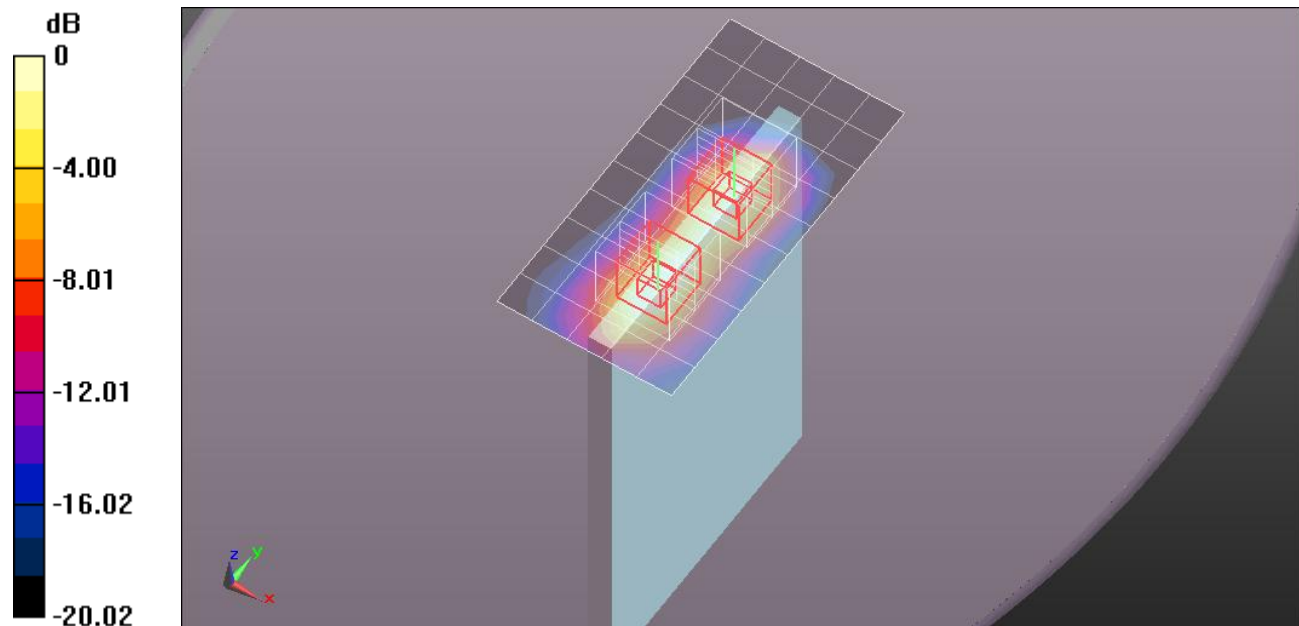
Measurement grid: dx=8mm, dy=8mm, dz=5mm

Reference Value = 20.325 V/m; Power Drift = -0.06 dB

Peak SAR (extrapolated) = 0.5490

**SAR(1 g) = 0.303 mW/g; SAR(10 g) = 0.153 mW/g**

Maximum value of SAR (measured) = 0.408 mW/g



0 dB = 0.410mW/g = -7.74 dB mW/g