

Test Laboratory: UL CCS SAR Lab B

20120130_SystemPerformanceCheck-D835V2 SN 4d117

Communication System: CW; Frequency: 835 MHz; Duty Cycle: 1:1
 Medium parameters used: $f = 835$ MHz; $\sigma = 0.996$ mho/m; $\epsilon_r = 54.337$; $\rho = 1000$ kg/m³
 Phantom section: Flat Section

Room Ambient Temperature: 24.0 deg. C; Liquid Temperature: 23.0 deg. C

DASY5 Configuration:

- Area Scan setting - Find Secondary Maximum Within: 2.0 dB and with a peak SAR value greater than 0.0012W/kg
- Probe: EX3DV3 - SN3531; ConvF(10, 10, 10); Calibrated: 12/19/2011
- Sensor-Surface: 2.5mm (Mechanical Surface Detection)
- Electronics: DAE4 Sn1258; Calibrated: 5/2/2011
- Phantom: ELI v5.0 (B); Type: QDOVA001BB; Serial: 1118
- Measurement SW: DASY52, Version 52.8 (0); SEMCAD X Version 14.6.4 (4989)

Body/Pin=100 mW/Area Scan (7x7x1): Measurement grid: dx=15mm, dy=15mm

Maximum value of SAR (measured) = 1.087 mW/g

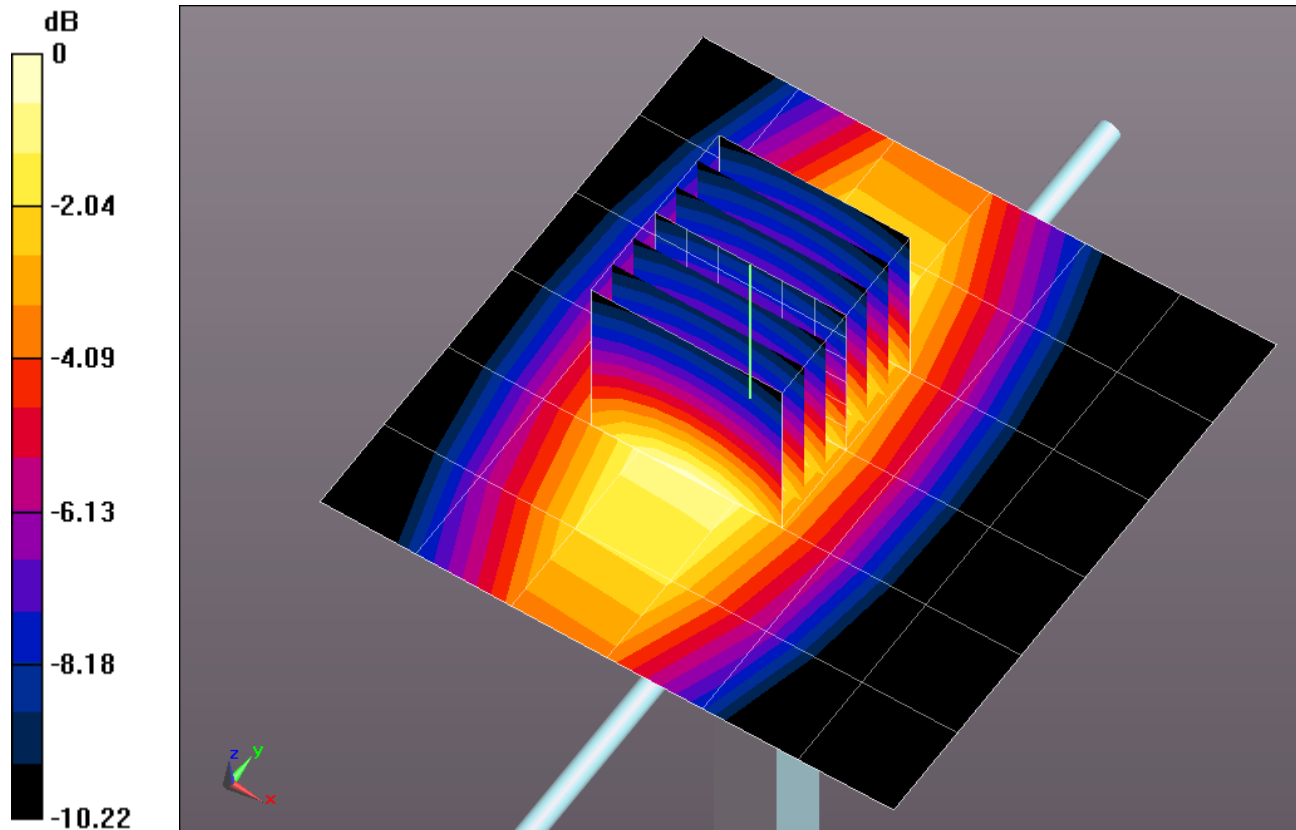
Body/Pin=100 mW/Zoom Scan (7x7x7)/Cube 0: Measurement grid: dx=5mm, dy=5mm, dz=5mm

Reference Value = 36.045 V/m; Power Drift = 0.02 dB

Peak SAR (extrapolated) = 1.5670

SAR(1 g) = 1.07 mW/g; SAR(10 g) = 0.705 mW/g

Maximum value of SAR (measured) = 1.294 mW/g



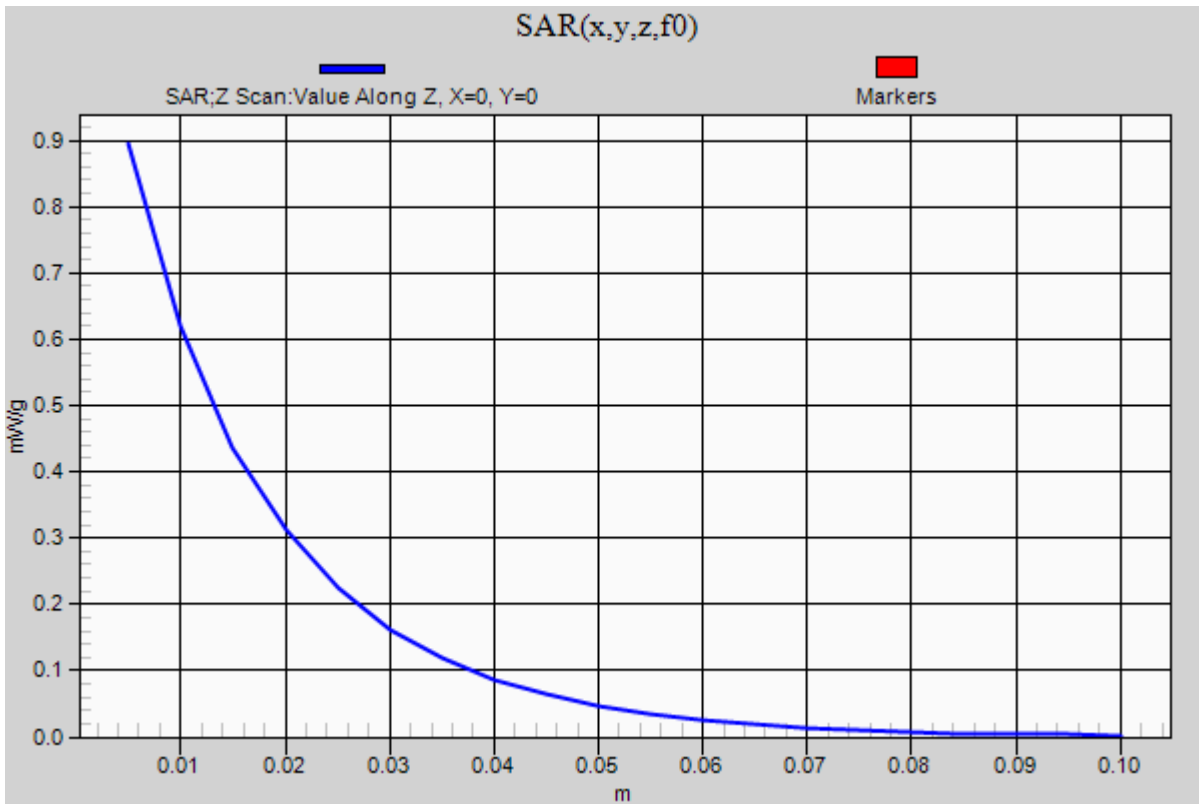
0 dB = 1.290mW/g = 2.21 dB mW/g

Test Laboratory: UL CCS SAR Lab B

20120130_SystemPerformanceCheck-D835V2 SN 4d117

Communication System: CW; Frequency: 835 MHz; Duty Cycle: 1:1

Body/Pin=100 mW/Z Scan (1x1x21): Measurement grid: dx=20mm, dy=20mm, dz=5mm
Maximum value of SAR (measured) = 0.895 mW/g



Test Laboratory: UL CCS SAR Lab B

20120131_SystemPerformanceCheck-D1900V2 SN 5d140

Communication System: CW; Frequency: 1800 MHz; Duty Cycle: 1:1

Medium parameters used: $f = 1800$ MHz; $\sigma = 1.429$ mho/m; $\epsilon_r = 51.716$; $\rho = 1000$ kg/m³

Phantom section: Flat Section

Room Ambient Temperature: 24.0 deg. C; Liquid Temperature: 23.0 deg. C

DASY5 Configuration:

- Area Scan setting - Find Secondary Maximum Within: 2.0 dB and with a peak SAR value greater than 0.0012W/kg
- Probe: EX3DV3 - SN3531; ConvF(8.34, 8.34, 8.34); Calibrated: 12/19/2011
- Sensor-Surface: 2.5mm (Mechanical Surface Detection)
- Electronics: DAE4 Sn1258; Calibrated: 5/2/2011
- Phantom: ELI v5.0 (A); Type: QDOVA001BB; Serial: 1120
- Measurement SW: DASY52, Version 52.8 (0);SEMCAD X Version 14.6.4 (4989)

Body/Pin=100 mW/Area Scan (7x7x1): Measurement grid: dx=15mm, dy=15mm

Maximum value of SAR (measured) = 3.814 mW/g

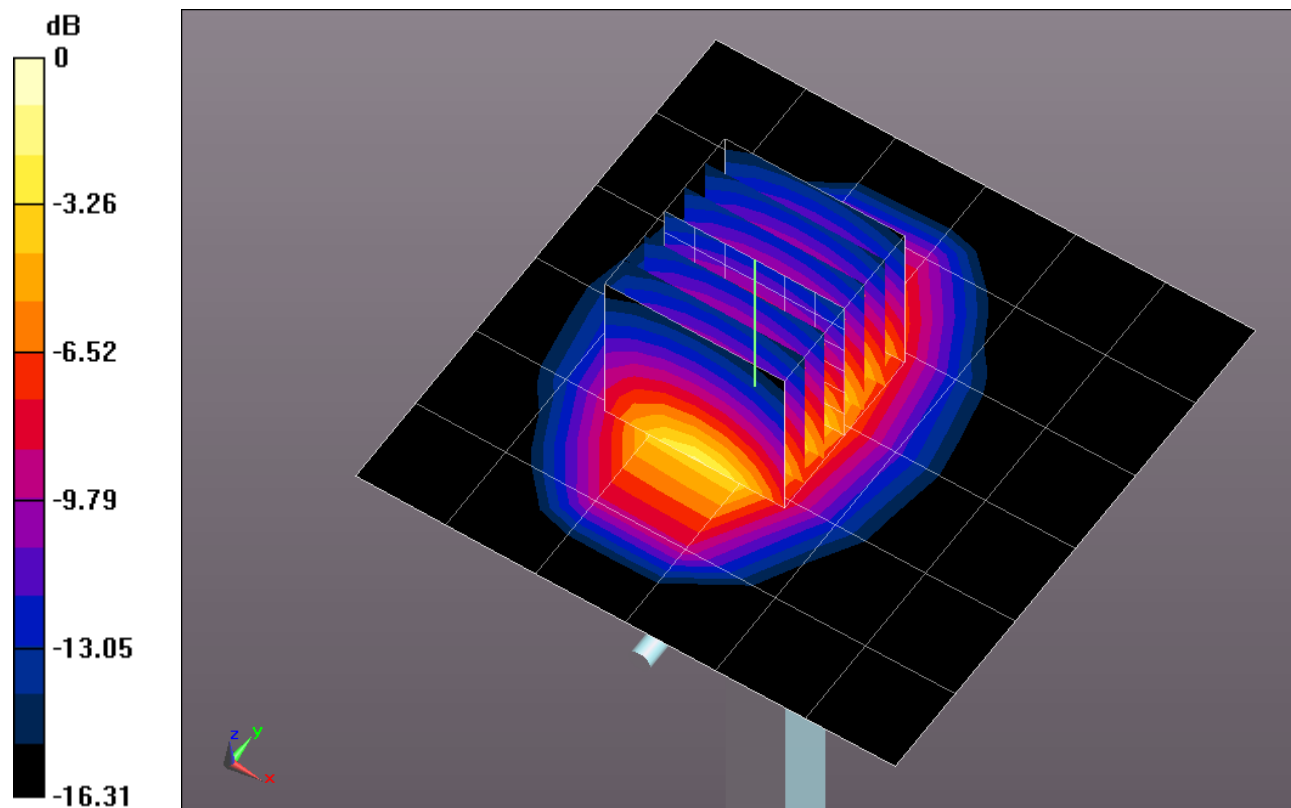
Body/Pin=100 mW/Zoom Scan (7x7x7)/Cube 0: Measurement grid: dx=5mm, dy=5mm, dz=5mm

Reference Value = 61.252 V/m; Power Drift = 0.07 dB

Peak SAR (extrapolated) = 7.1870

SAR(1 g) = 4.07 mW/g; SAR(10 g) = 2.17 mW/g

Maximum value of SAR (measured) = 5.441 mW/g



0 dB = 5.440mW/g = 14.71 dB mW/g

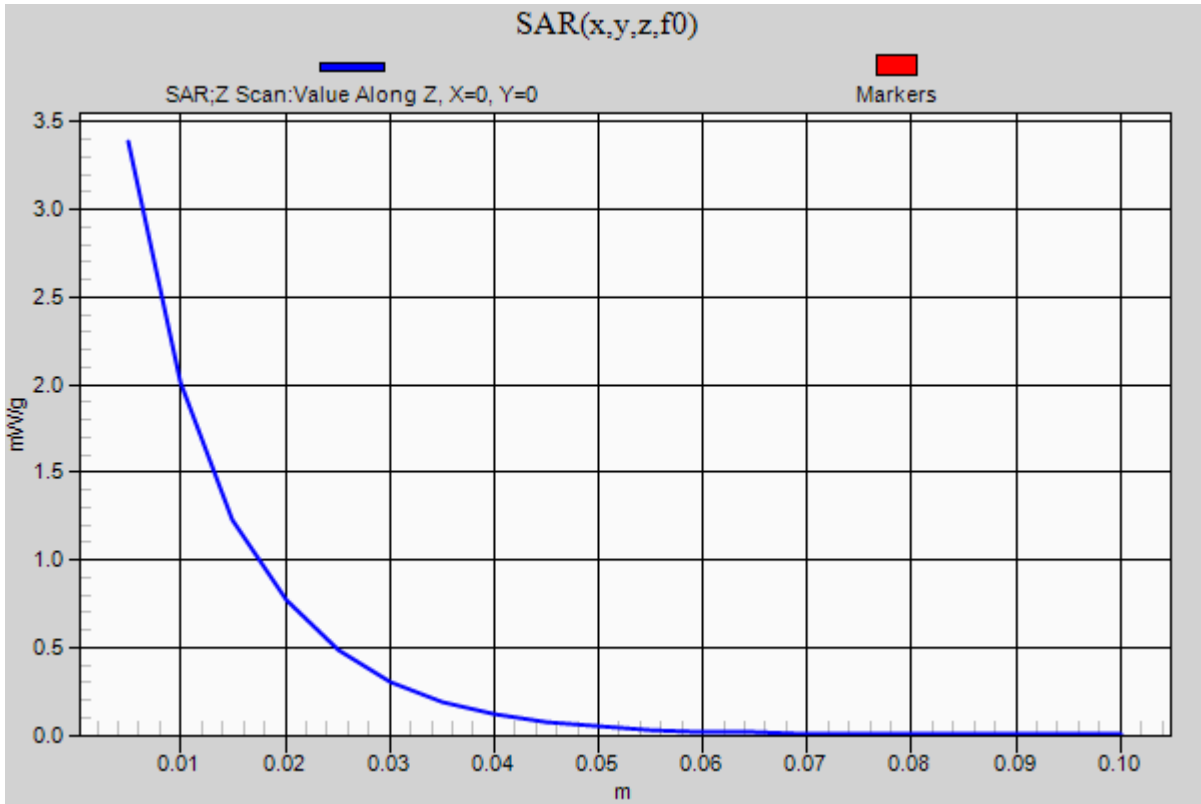
Test Laboratory: UL CCS SAR Lab B

20120131_SystemPerformanceCheck-D1900V2 SN 5d140

Communication System: CW; Frequency: 1800 MHz; Duty Cycle: 1:1

Body/Pin=100 mW/Z Scan (1x1x21): Measurement grid: dx=20mm, dy=20mm, dz=5mm

Maximum value of SAR (measured) = 3.385 mW/g



Test Laboratory: UL CCS SAR Lab B

20120201_SystemPerformanceCheck-D1900V2 SN 5d140

Communication System: CW; Frequency: 1800 MHz; Duty Cycle: 1:1
 Medium parameters used: $f = 1800$ MHz; $\sigma = 1.345$ mho/m; $\epsilon_r = 38.868$; $\rho = 1000$ kg/m³
 Phantom section: Flat Section

Room Ambient Temperature: 24.0 deg. C; Liquid Temperature: 23.0 deg. C

DASY5 Configuration:

- Area Scan setting - Find Secondary Maximum Within: 2.0 dB and with a peak SAR value greater than 0.0012W/kg
- Probe: EX3DV3 - SN3531; ConvF(8.92, 8.92, 8.92); Calibrated: 12/19/2011
- Sensor-Surface: 2.5mm (Mechanical Surface Detection)
- Electronics: DAE4 Sn1258; Calibrated: 5/2/2011
- Phantom: SAM; Type: QD000P40CD; Serial: 1629
- Measurement SW: DASY52, Version 52.8 (0);SEMCAD X Version 14.6.4 (4989)

Head/Pin=100 mW/Area Scan (7x7x1): Measurement grid: dx=15mm, dy=15mm

Maximum value of SAR (measured) = 4.044 mW/g

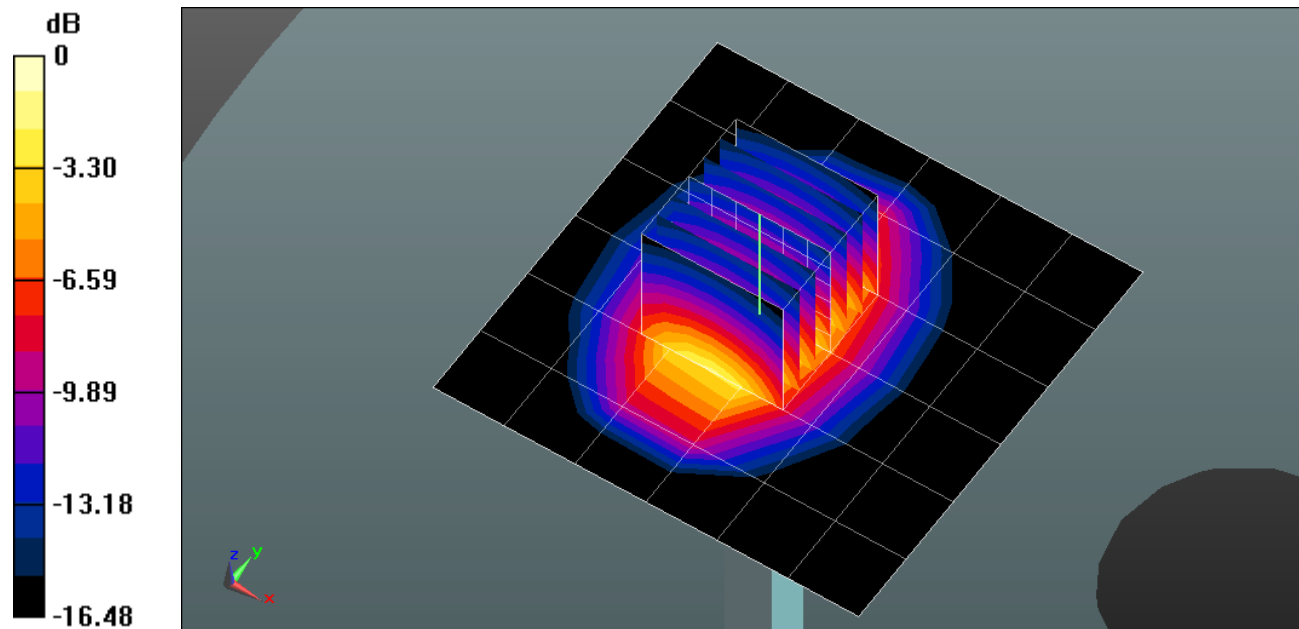
Head/Pin=100 mW/Zoom Scan (7x7x7)/Cube 0: Measurement grid: dx=5mm, dy=5mm, dz=5mm

Reference Value = 62.664 V/m; Power Drift = 0.03 dB

Peak SAR (extrapolated) = 7.1140

SAR(1 g) = 3.94 mW/g; SAR(10 g) = 2.1 mW/g

Maximum value of SAR (measured) = 5.282 mW/g



0 dB = 5.280mW/g = 14.45 dB mW/g

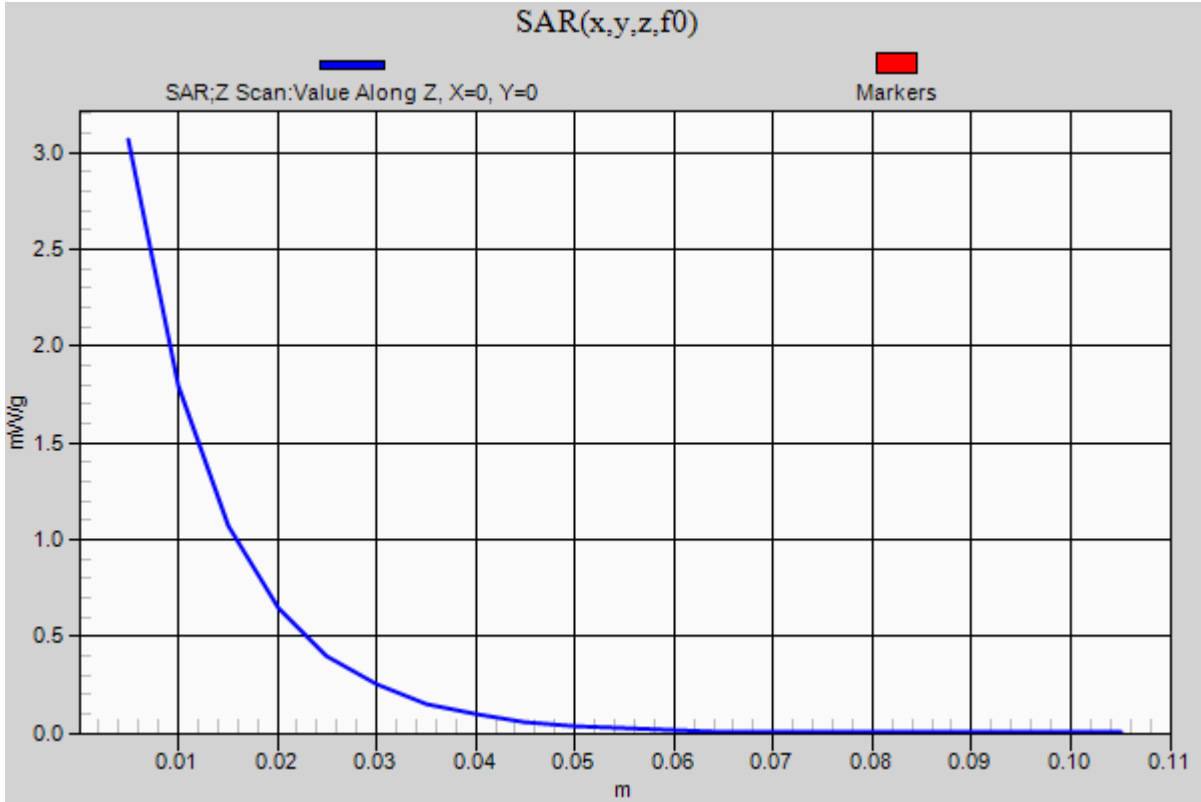
Test Laboratory: UL CCS SAR Lab B

20120201_SystemPerformanceCheck-D1900V2 SN 5d140

Communication System: CW; Frequency: 1800 MHz; Duty Cycle: 1:1

Head/Pin=100 mW/Z Scan (1x1x21): Measurement grid: dx=20mm, dy=20mm, dz=5mm

Maximum value of SAR (measured) = 3.066 mW/g



Test Laboratory: UL CCS SAR Lab B

20120202_SystemPerformanceCheck-D1900V2 SN 5d140

Communication System: CW; Frequency: 1900 MHz; Duty Cycle: 1:1
 Medium parameters used: $f = 1900$ MHz; $\sigma = 1.499$ mho/m; $\epsilon_r = 53.533$; $\rho = 1000$ kg/m³
 Phantom section: Flat Section

Room Ambient Temperature: 24.0 deg. C; Liquid Temperature: 23.0 deg. C

DASY5 Configuration:

- Area Scan setting - Find Secondary Maximum Within: 2.0 dB and with a peak SAR value greater than 0.0012W/kg
- Probe: EX3DV3 - SN3531; ConvF(7.91, 7.91, 7.91); Calibrated: 12/19/2011
- Sensor-Surface: 2.5mm (Mechanical Surface Detection)
- Electronics: DAE4 Sn1258; Calibrated: 5/2/2011
- Phantom: ELI v5.0 (A); Type: QDOVA001BB; Serial: 1120
- Measurement SW: DASY52, Version 52.8 (0); SEMCAD X Version 14.6.4 (4989)

Body/Pin=100 mW/Area Scan (7x7x1): Measurement grid: dx=15mm, dy=15mm

Maximum value of SAR (measured) = 3.945 mW/g

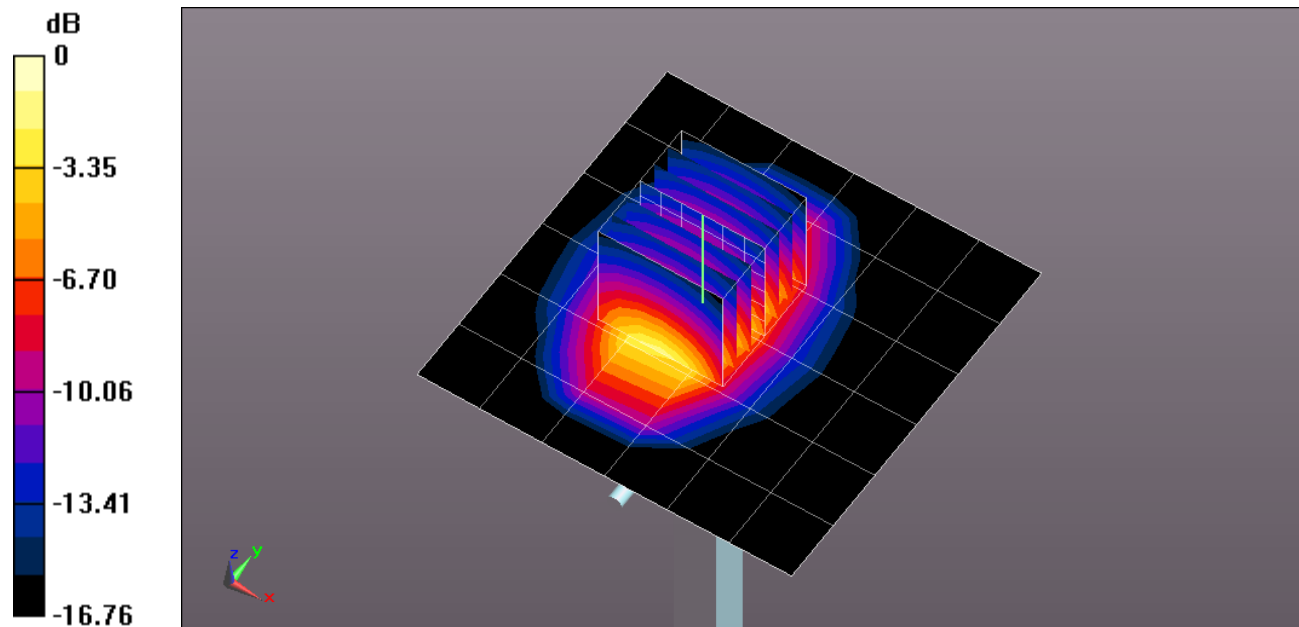
Body/Pin=100 mW/Zoom Scan (7x7x7)/Cube 0: Measurement grid: dx=5mm, dy=5mm, dz=5mm

Reference Value = 59.771 V/m; Power Drift = 0.08 dB

Peak SAR (extrapolated) = 7.4950

SAR(1 g) = 4.18 mW/g; SAR(10 g) = 2.2 mW/g

Maximum value of SAR (measured) = 5.606 mW/g



0 dB = 5.610mW/g = 14.98 dB mW/g

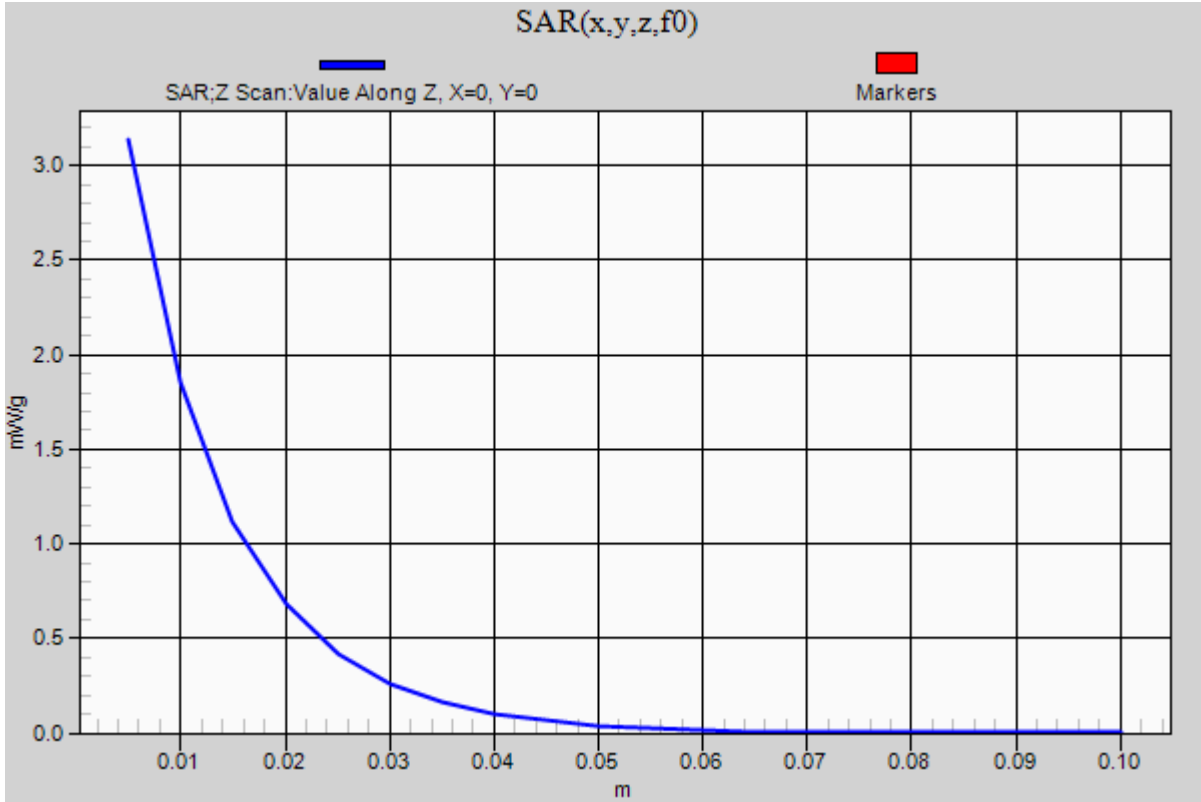
Test Laboratory: UL CCS SAR Lab B

20120202_SystemPerformanceCheck-D1900V2 SN 5d140

Communication System: CW; Frequency: 1900 MHz; Duty Cycle: 1:1

Body/Pin=100 mW/Z Scan (1x1x21): Measurement grid: dx=20mm, dy=20mm, dz=5mm

Maximum value of SAR (measured) = 3.138 mW/g



Test Laboratory: UL CCS SAR Lab B

20120203_SystemPerformanceCheck-D1900V2 SN 5d140

Communication System: CW; Frequency: 1900 MHz; Duty Cycle: 1:1
 Medium parameters used: $f = 1900$ MHz; $\sigma = 1.527$ mho/m; $\epsilon_r = 51.838$; $\rho = 1000$ kg/m³
 Phantom section: Flat Section

Room Ambient Temperature: 24.0 deg. C; Liquid Temperature: 23.0 deg. C

DASY5 Configuration:

- Area Scan setting - Find Secondary Maximum Within: 2.0 dB and with a peak SAR value greater than 0.0012W/kg
- Probe: EX3DV3 - SN3531; ConvF(7.91, 7.91, 7.91); Calibrated: 12/19/2011
- Sensor-Surface: 2.5mm (Mechanical Surface Detection)
- Electronics: DAE4 Sn1258; Calibrated: 5/2/2011
- Phantom: ELI v5.0 (A); Type: QDOVA001BB; Serial: 1120
- Measurement SW: DASY52, Version 52.8 (0); SEMCAD X Version 14.6.4 (4989)

Body/Pin=100 mW/Area Scan (7x7x1): Measurement grid: dx=15mm, dy=15mm

Maximum value of SAR (measured) = 4.354 mW/g

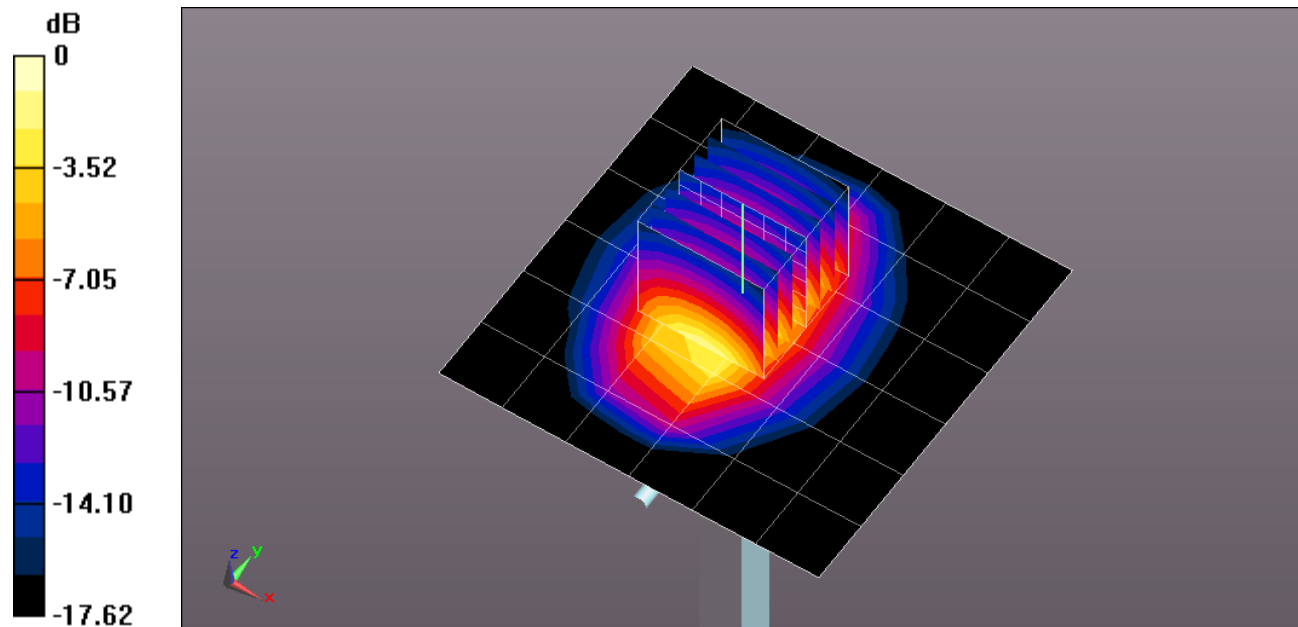
Body/Pin=100 mW/Zoom Scan (7x7x7)/Cube 0: Measurement grid: dx=5mm, dy=5mm, dz=5mm

Reference Value = 61.050 V/m; Power Drift = 0.0097 dB

Peak SAR (extrapolated) = 7.6070

SAR(1 g) = 4.18 mW/g; SAR(10 g) = 2.19 mW/g

Maximum value of SAR (measured) = 5.602 mW/g



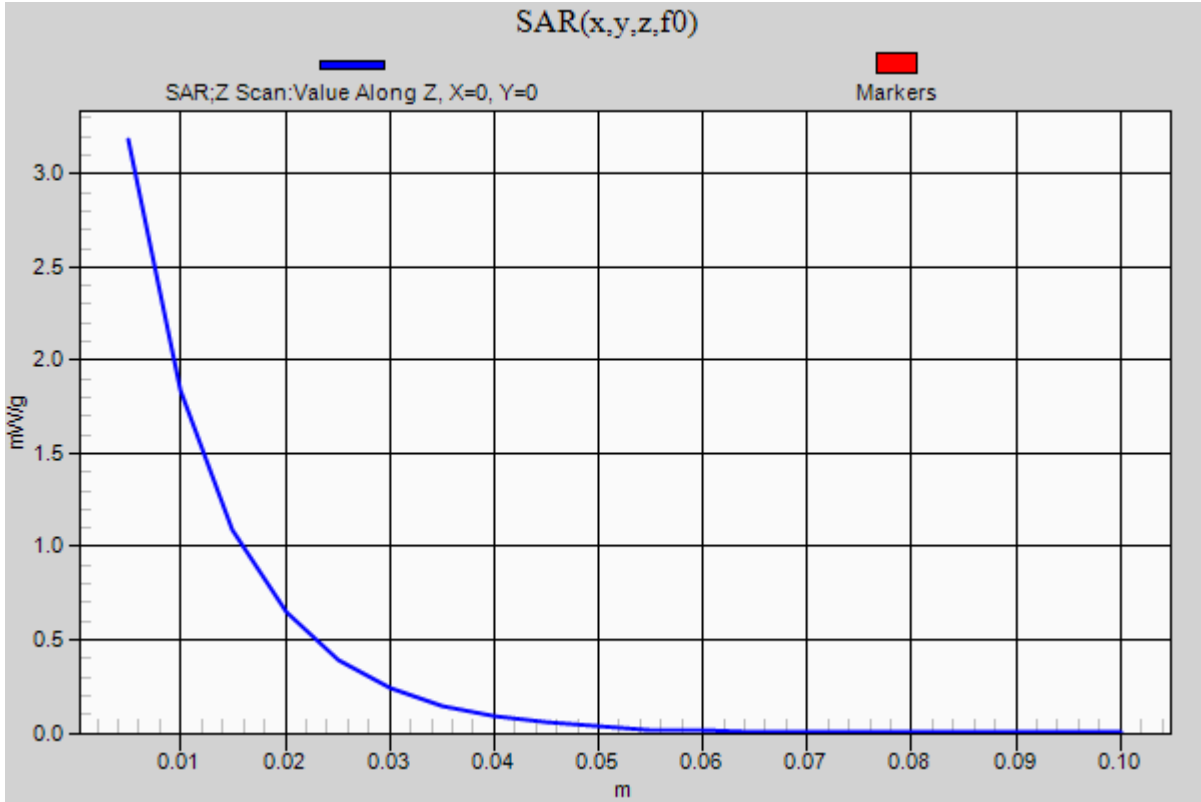
0 dB = 5.600mW/g = 14.96 dB mW/g

Test Laboratory: UL CCS SAR Lab B

20120203_SystemPerformanceCheck-D1900V2 SN 5d140

Communication System: CW; Frequency: 1900 MHz; Duty Cycle: 1:1

Body/Pin=100 mW/Z Scan (1x1x21): Measurement grid: dx=20mm, dy=20mm, dz=5mm
Maximum value of SAR (measured) = 3.183 mW/g



Test Laboratory: UL CCS SAR Lab B

20120203_SystemPerformanceCheck-D835V2 SN 4d117

Communication System: CW; Frequency: 835 MHz; Duty Cycle: 1:1
 Medium parameters used: $f = 835$ MHz; $\sigma = 0.974$ mho/m; $\epsilon_r = 53.388$; $\rho = 1000$ kg/m³
 Phantom section: Flat Section

Room Ambient Temperature: 24.0 deg. C; Liquid Temperature: 23.0 deg. C

DASY5 Configuration:

- Area Scan setting - Find Secondary Maximum Within: 2.0 dB and with a peak SAR value greater than 0.0012W/kg
- Probe: EX3DV3 - SN3531; ConvF(10, 10, 10); Calibrated: 12/19/2011
- Sensor-Surface: 2.5mm (Mechanical Surface Detection)
- Electronics: DAE4 Sn1258; Calibrated: 5/2/2011
- Phantom: ELI v5.0 (B); Type: QDOVA001BB; Serial: 1118
- Measurement SW: DASY52, Version 52.8 (0); SEMCAD X Version 14.6.4 (4989)

Body/Pin=100 mW/Area Scan (7x7x1): Measurement grid: dx=15mm, dy=15mm

Maximum value of SAR (measured) = 1.058 mW/g

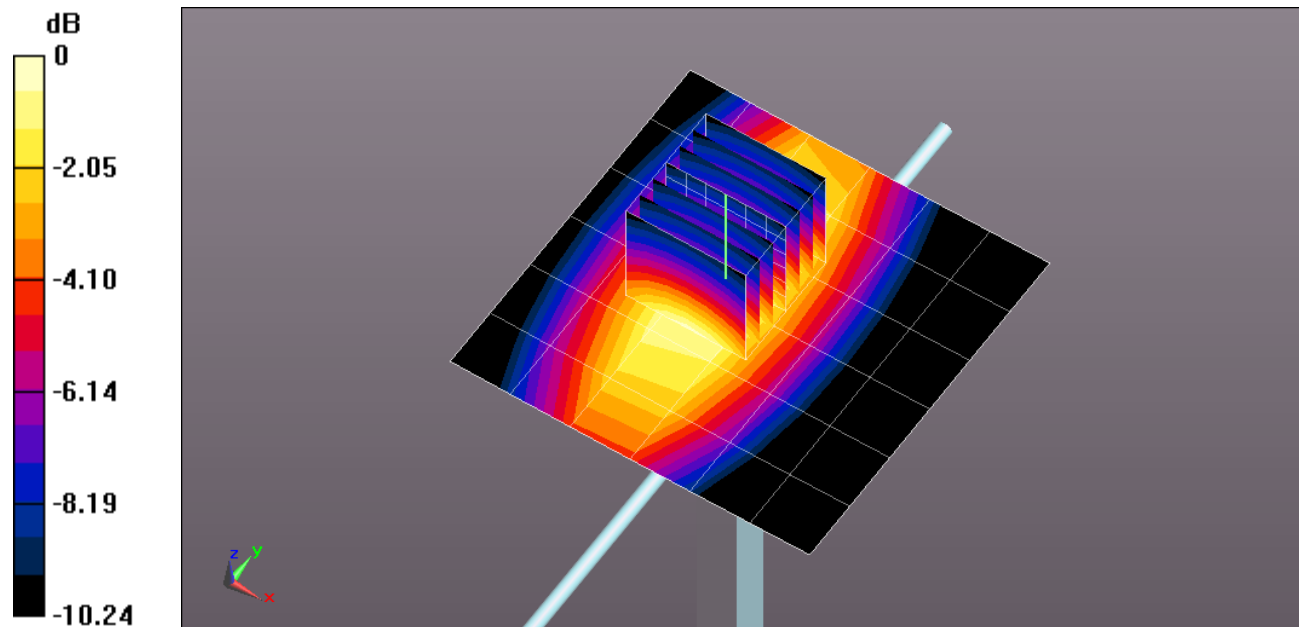
Body/Pin=100 mW/Zoom Scan (7x7x7)/Cube 0: Measurement grid: dx=5mm, dy=5mm, dz=5mm

Reference Value = 34.893 V/m; Power Drift = -0.01 dB

Peak SAR (extrapolated) = 1.4520

SAR(1 g) = 0.990 mW/g; SAR(10 g) = 0.654 mW/g

Maximum value of SAR (measured) = 1.200 mW/g



0 dB = 1.200mW/g = 1.58 dB mW/g

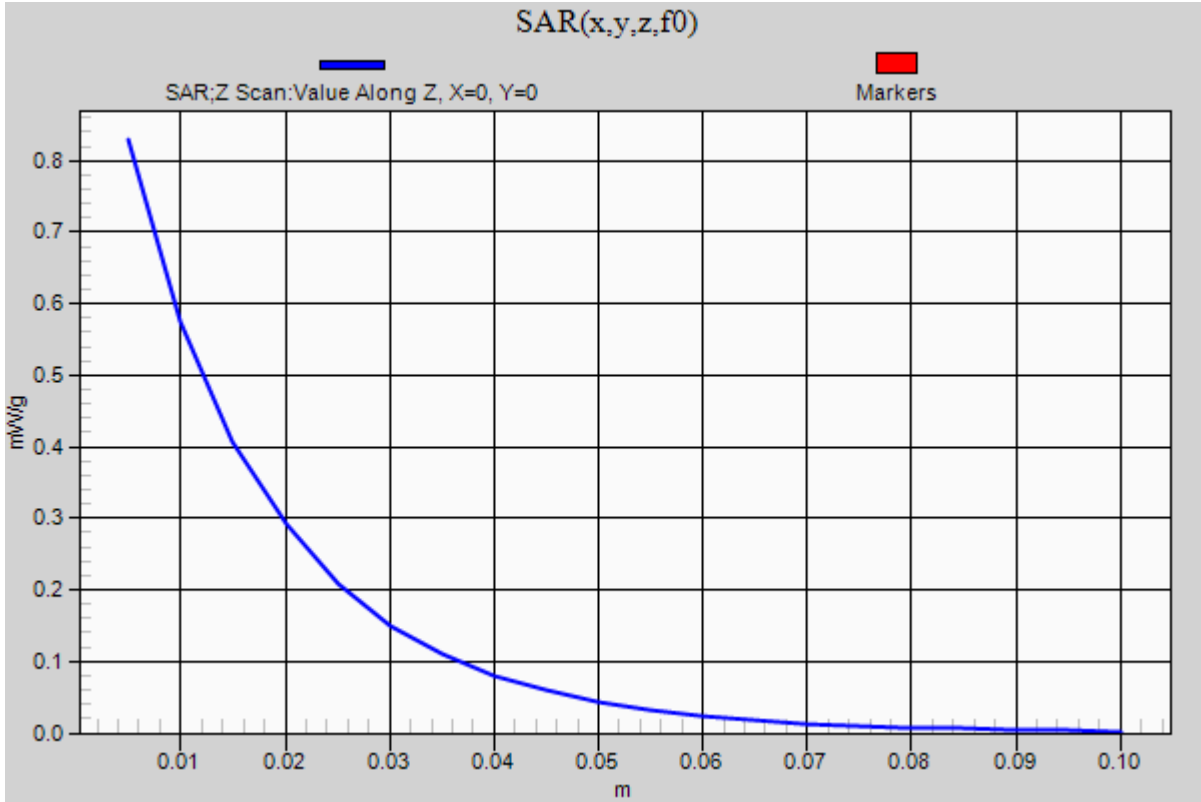
Test Laboratory: UL CCS SAR Lab B

20120203_SystemPerformanceCheck-D835V2 SN 4d117

Communication System: CW; Frequency: 835 MHz; Duty Cycle: 1:1

Body/Pin=100 mW/Z Scan (1x1x21): Measurement grid: dx=20mm, dy=20mm, dz=5mm

Maximum value of SAR (measured) = 0.829 mW/g



Test Laboratory: UL CCS SAR Lab B

20120206_SystemPerformanceCheck-D1900V2 SN 5d140

Communication System: CW; Frequency: 1900 MHz; Duty Cycle: 1:1
 Medium parameters used: $f = 1900$ MHz; $\sigma = 1.504$ mho/m; $\epsilon_r = 52.159$; $\rho = 1000$ kg/m³
 Phantom section: Flat Section

Room Ambient Temperature: 24.0 deg. C; Liquid Temperature: 23.0 deg. C

DASY5 Configuration:

- Area Scan setting - Find Secondary Maximum Within: 2.0 dB and with a peak SAR value greater than 0.0012W/kg
- Probe: EX3DV3 - SN3531; ConvF(7.91, 7.91, 7.91); Calibrated: 12/19/2011
- Sensor-Surface: 2.5mm (Mechanical Surface Detection)
- Electronics: DAE4 Sn1258; Calibrated: 5/2/2011
- Phantom: ELI v5.0 (A); Type: QDOVA001BB; Serial: 1120
- Measurement SW: DASY52, Version 52.8 (0); SEMCAD X Version 14.6.4 (4989)

Body/Pin=100 mW/Area Scan (7x7x1): Measurement grid: dx=15mm, dy=15mm

Maximum value of SAR (measured) = 3.861 mW/g

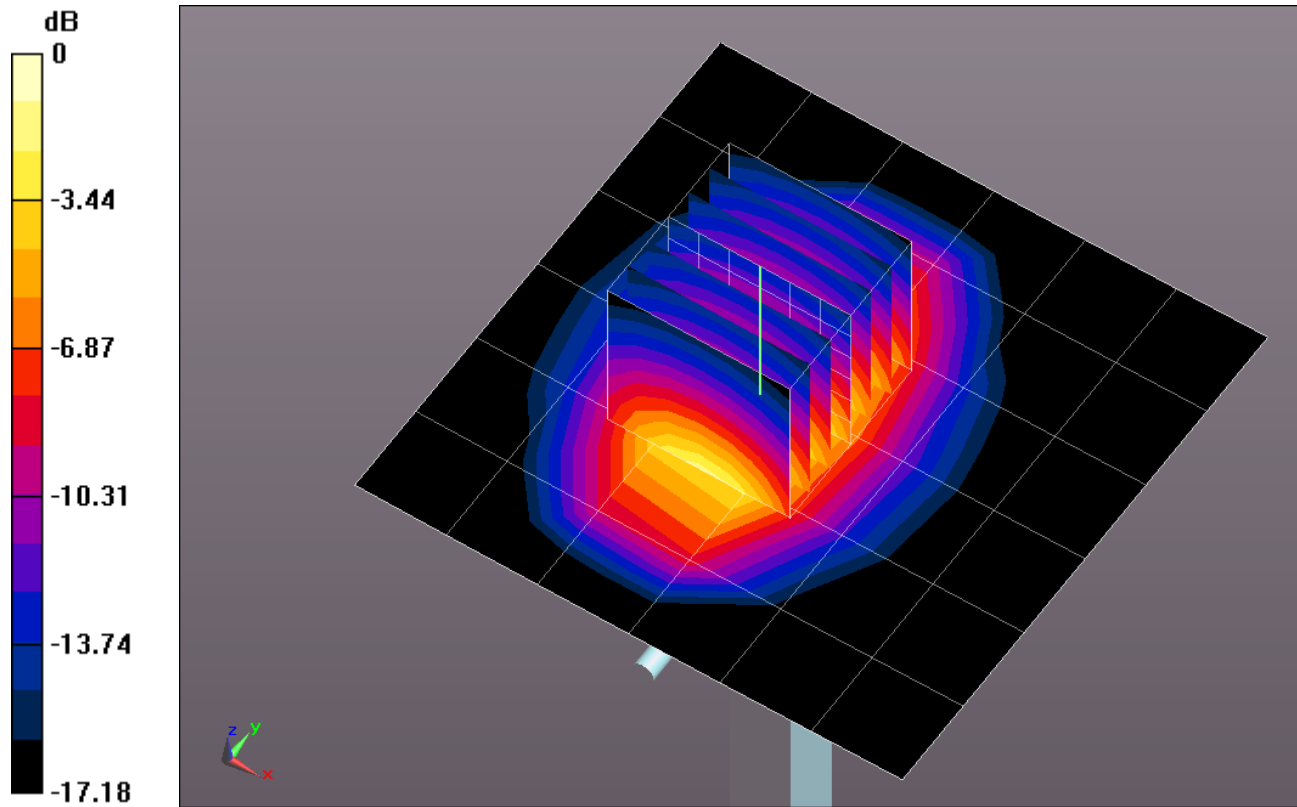
Body/Pin=100 mW/Zoom Scan (7x7x7)/Cube 0: Measurement grid: dx=5mm, dy=5mm, dz=5mm

Reference Value = 60.412 V/m; Power Drift = 0.05 dB

Peak SAR (extrapolated) = 7.5120

SAR(1 g) = 4.13 mW/g; SAR(10 g) = 2.16 mW/g

Maximum value of SAR (measured) = 5.580 mW/g



0 dB = 5.580mW/g = 14.93 dB mW/g

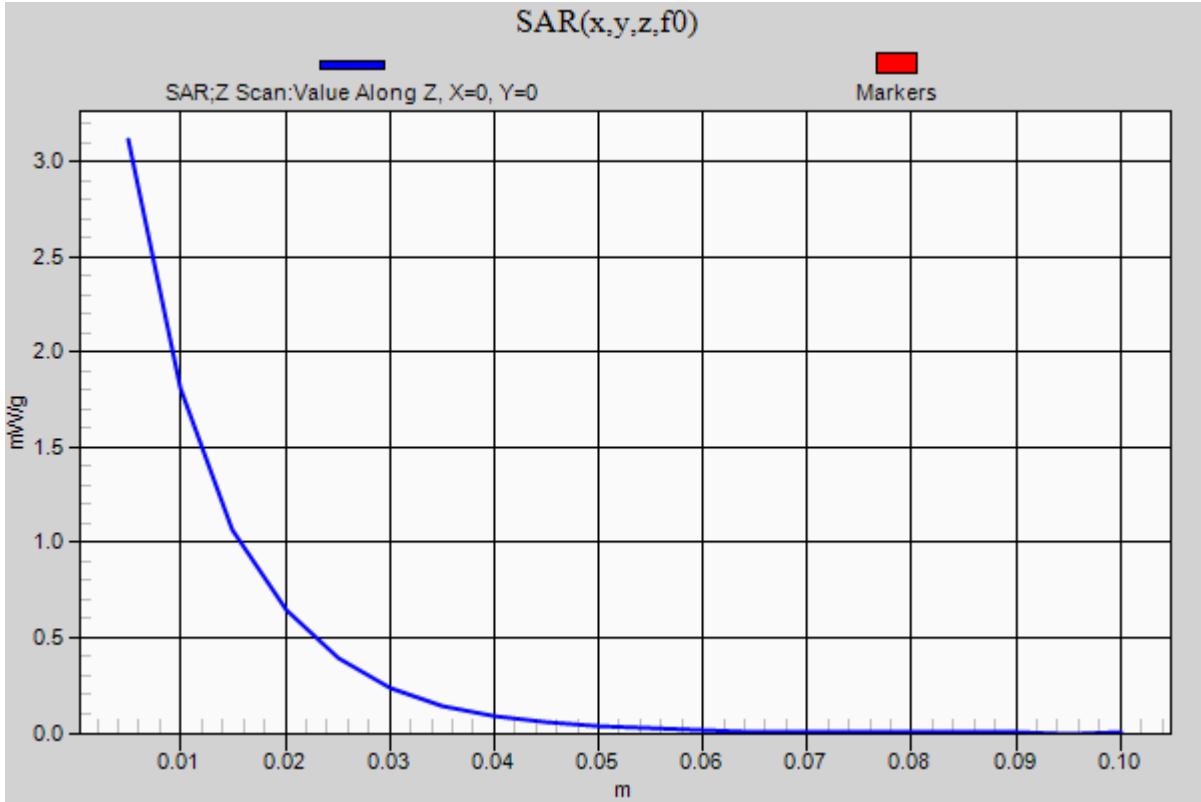
Test Laboratory: UL CCS SAR Lab B

20120206_SystemPerformanceCheck-D1900V2 SN 5d140

Communication System: CW; Frequency: 1900 MHz; Duty Cycle: 1:1

Body/Pin=100 mW/Z Scan (1x1x21): Measurement grid: dx=20mm, dy=20mm, dz=5mm

Maximum value of SAR (measured) = 3.117 mW/g



Test Laboratory: UL CCS SAR Lab B

20120206_SystemPerformanceCheck-D835V2 SN 4d117

Communication System: CW; Frequency: 835 MHz; Duty Cycle: 1:1

Medium parameters used: $f = 835$ MHz; $\sigma = 0.891$ mho/m; $\epsilon_r = 41.258$; $\rho = 1000$ kg/m³

Phantom section: Flat Section

Room Ambient Temperature: 24.0 deg. C; Liquid Temperature: 23.0 deg. C

DASY5 Configuration:

- Area Scan setting - Find Secondary Maximum Within: 2.0 dB and with a peak SAR value greater than 0.0012W/kg
- Probe: EX3DV3 - SN3531; ConvF(9.81, 9.81, 9.81); Calibrated: 12/19/2011
- Sensor-Surface: 2.5mm (Mechanical Surface Detection)
- Electronics: DAE4 Sn1258; Calibrated: 5/2/2011
- Phantom: SAM; Type: QD000P40CD; Serial: 1629
- Measurement SW: DASY52, Version 52.8 (0); SEMCAD X Version 14.6.4 (4989)

Head/Pin=100 mW/Area Scan (7x7x1): Measurement grid: dx=15mm, dy=15mm

Maximum value of SAR (measured) = 1.122 mW/g

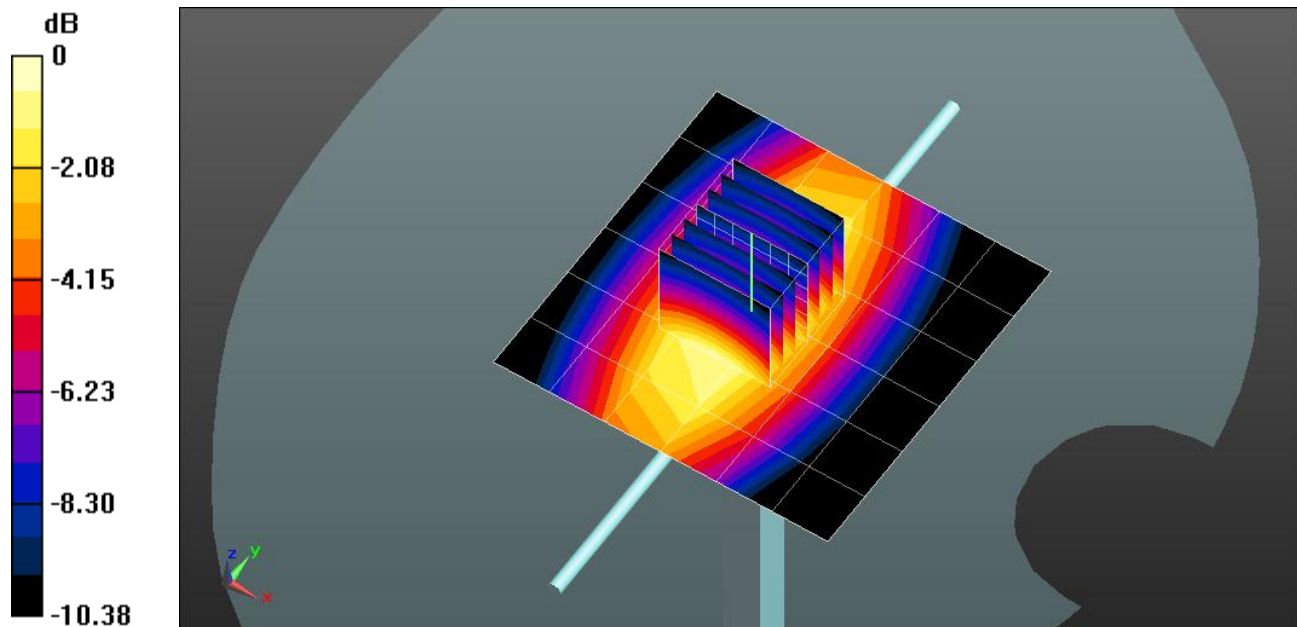
Head/Pin=100 mW/Zoom Scan (7x7x7)/Cube 0: Measurement grid: dx=5mm, dy=5mm, dz=5mm

Reference Value = 37.701 V/m; Power Drift = -0.13 dB

Peak SAR (extrapolated) = 1.4770

SAR(1 g) = 0.996 mW/g; SAR(10 g) = 0.656 mW/g

Maximum value of SAR (measured) = 1.209 mW/g



0 dB = 1.210mW/g = 1.66 dB mW/g

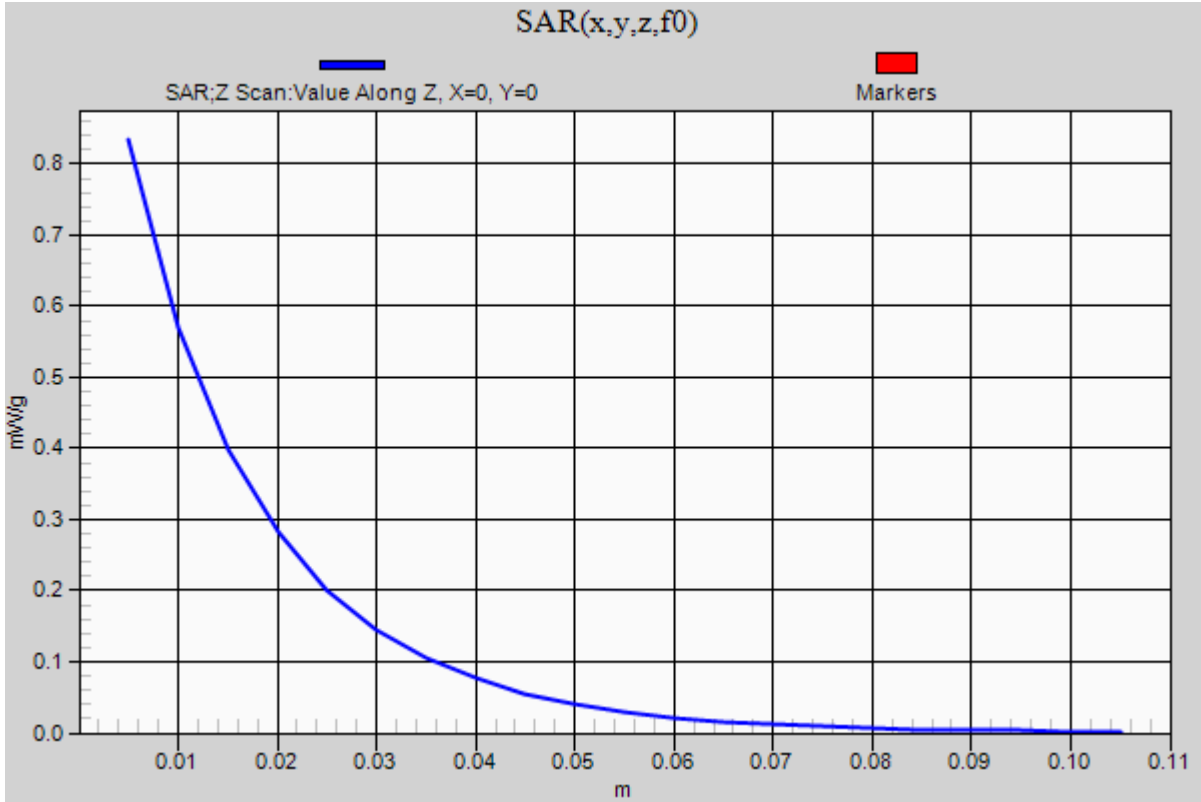
Test Laboratory: UL CCS SAR Lab B

20120206_SystemPerformanceCheck-D835V2 SN 4d117

Communication System: CW; Frequency: 835 MHz; Duty Cycle: 1:1

Head/Pin=100 mW/Z Scan (1x1x21): Measurement grid: dx=20mm, dy=20mm, dz=5mm

Maximum value of SAR (measured) = 0.834 mW/g



Test Laboratory: UL CCS SAR Lab B

20120218_SystemPerformanceCheck-D2450V2 SN 706

Communication System: CW; Frequency: 2450 MHz; Duty Cycle: 1:1
 Medium parameters used: $f = 2450$ MHz; $\sigma = 1.831$ mho/m; $\epsilon_r = 39.137$; $\rho = 1000$ kg/m³
 Phantom section: Flat Section

Room Ambient Temperature: 24.0 deg. C; Liquid Temperature: 23.0 deg. C

DASY5 Configuration:

- Area Scan setting - Find Secondary Maximum Within: 2.0 dB and with a peak SAR value greater than 0.0012W/kg
- Probe: EX3DV3 - SN3531; ConvF(7.4, 7.4, 7.4); Calibrated: 12/19/2011
- Sensor-Surface: 2.5mm (Mechanical Surface Detection)
- Electronics: DAE4 Sn1258; Calibrated: 5/2/2011
- Phantom: SAM; Type: QD000P40CD; Serial: 1629
- Measurement SW: DASY52, Version 52.8 (0);SEMCAD X Version 14.6.4 (4989)

Head/Pin=100 mW/Area Scan (7x7x1): Measurement grid: dx=15mm, dy=15mm

Maximum value of SAR (measured) = 4.987 mW/g

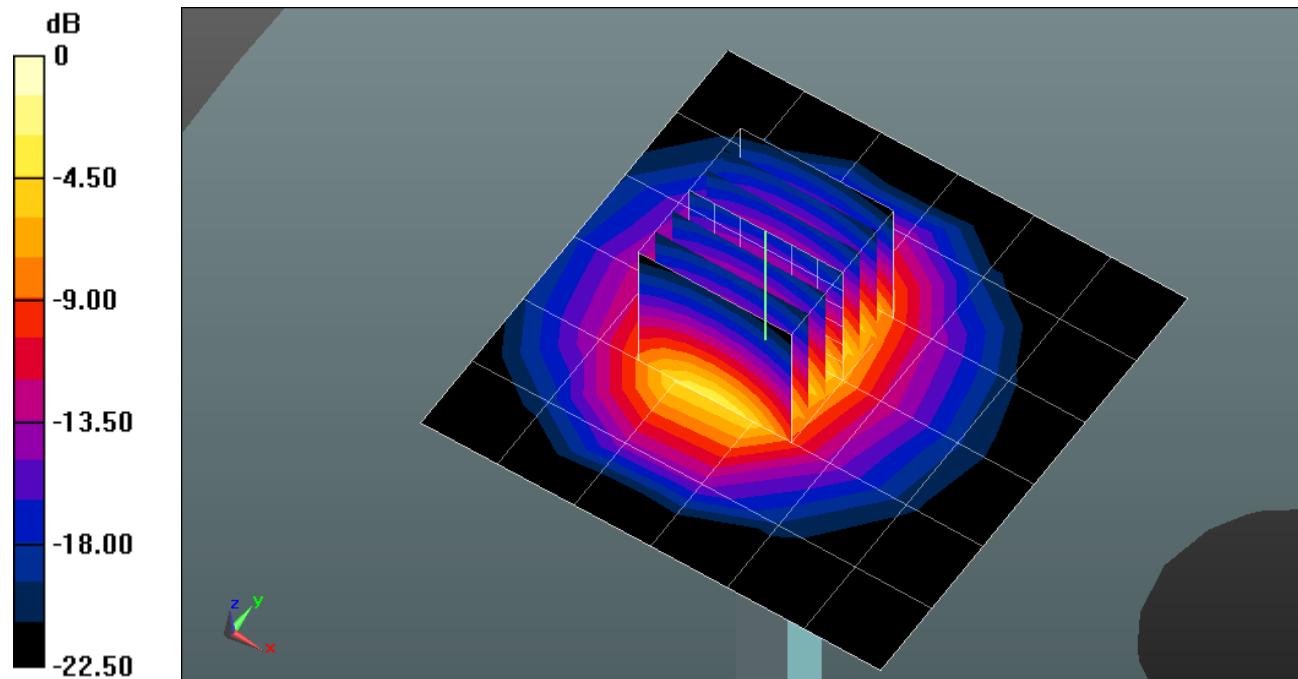
Head/Pin=100 mW/Zoom Scan (7x7x7)/Cube 0: Measurement grid: dx=5mm, dy=5mm, dz=5mm

Reference Value = 63.071 V/m; Power Drift = 0.06 dB

Peak SAR (extrapolated) = 11.4020

SAR(1 g) = 5.34 mW/g; SAR(10 g) = 2.46 mW/g

Maximum value of SAR (measured) = 7.673 mW/g



0 dB = 7.670mW/g = 17.70 dB mW/g

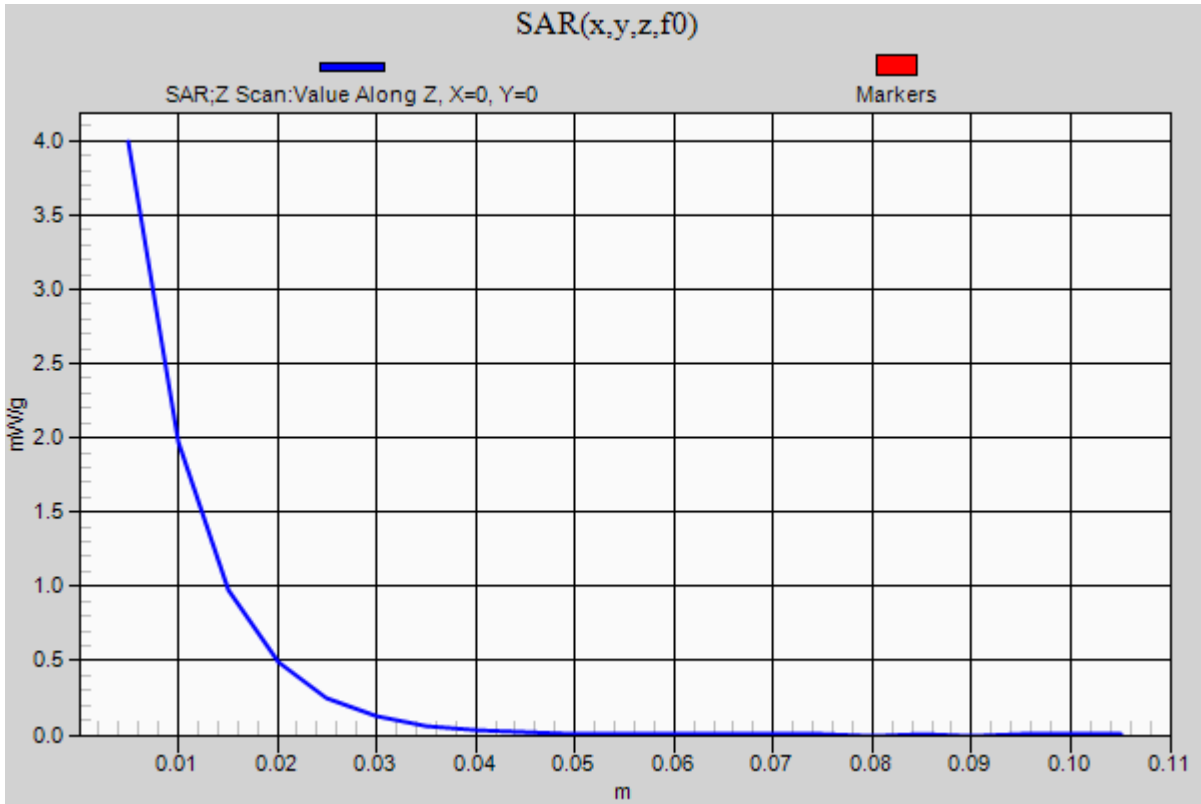
Test Laboratory: UL CCS SAR Lab B

20120218_SystemPerformanceCheck-D2450V2 SN 706

Communication System: CW; Frequency: 2450 MHz; Duty Cycle: 1:1

Head/Pin=100 mW/Z Scan (1x1x21): Measurement grid: dx=20mm, dy=20mm, dz=5mm

Maximum value of SAR (measured) = 3.993 mW/g



Test Laboratory: UL CCS SAR Lab B

20120208_SystemPerformanceCheck-D1900V2 SN 5d140

Communication System: CW; Frequency: 1900 MHz; Duty Cycle: 1:1
 Medium parameters used: $f = 1900$ MHz; $\sigma = 1.511$ mho/m; $\epsilon_r = 51.763$; $\rho = 1000$ kg/m³
 Phantom section: Flat Section

Room Ambient Temperature: 24.0 deg. C; Liquid Temperature: 23.0 deg. C

DASY5 Configuration:

- Area Scan setting - Find Secondary Maximum Within: 2.0 dB and with a peak SAR value greater than 0.0012W/kg
- Probe: EX3DV3 - SN3531; ConvF(7.91, 7.91, 7.91); Calibrated: 12/19/2011
- Sensor-Surface: 2.5mm (Mechanical Surface Detection)
- Electronics: DAE4 Sn1258; Calibrated: 5/2/2011
- Phantom: ELI v5.0 (A); Type: QDOVA001BB; Serial: 1120
- Measurement SW: DASY52, Version 52.8 (0);SEMCAD X Version 14.6.4 (4989)

Body/Pin=100 mW/Area Scan (7x7x1): Measurement grid: dx=15mm, dy=15mm

Maximum value of SAR (measured) = 4.125 mW/g

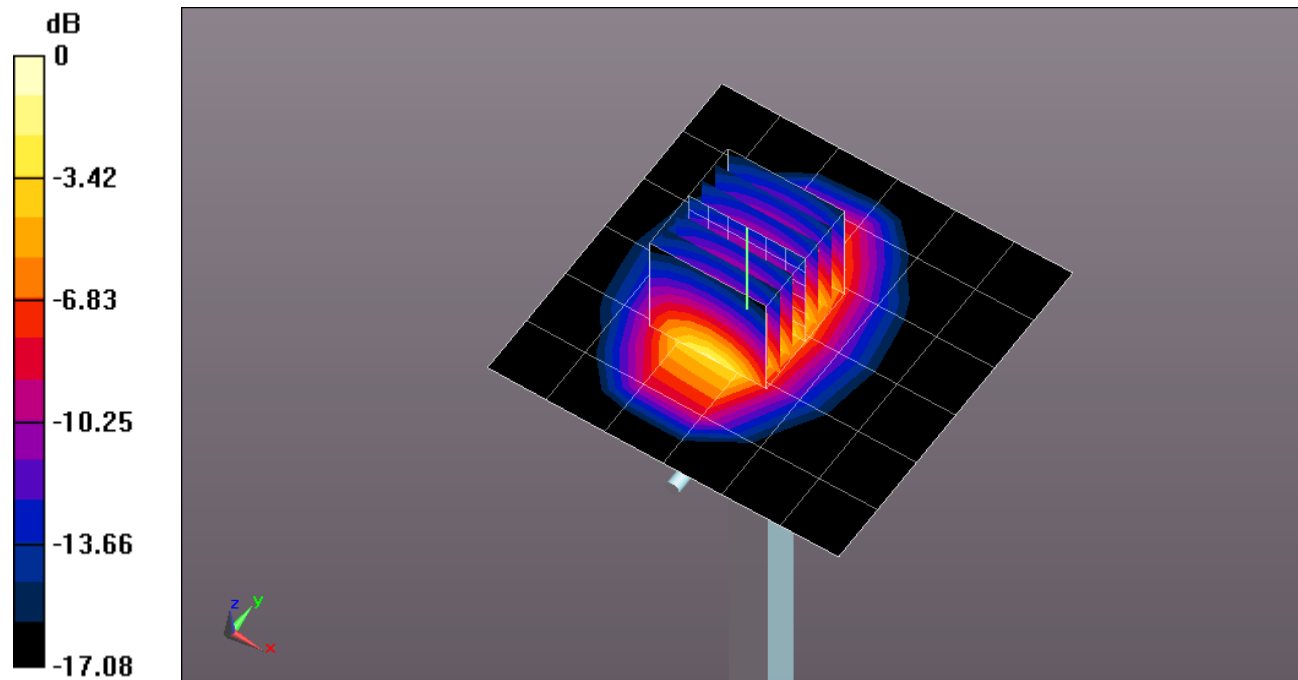
Body/Pin=100 mW/Zoom Scan (7x7x7)/Cube 0: Measurement grid: dx=5mm, dy=5mm, dz=5mm

Reference Value = 61.822 V/m; Power Drift = 0.00087 dB

Peak SAR (extrapolated) = 7.7360

SAR(1 g) = 4.27 mW/g; SAR(10 g) = 2.24 mW/g

Maximum value of SAR (measured) = 5.752 mW/g



0 dB = 5.750mW/g = 15.19 dB mW/g

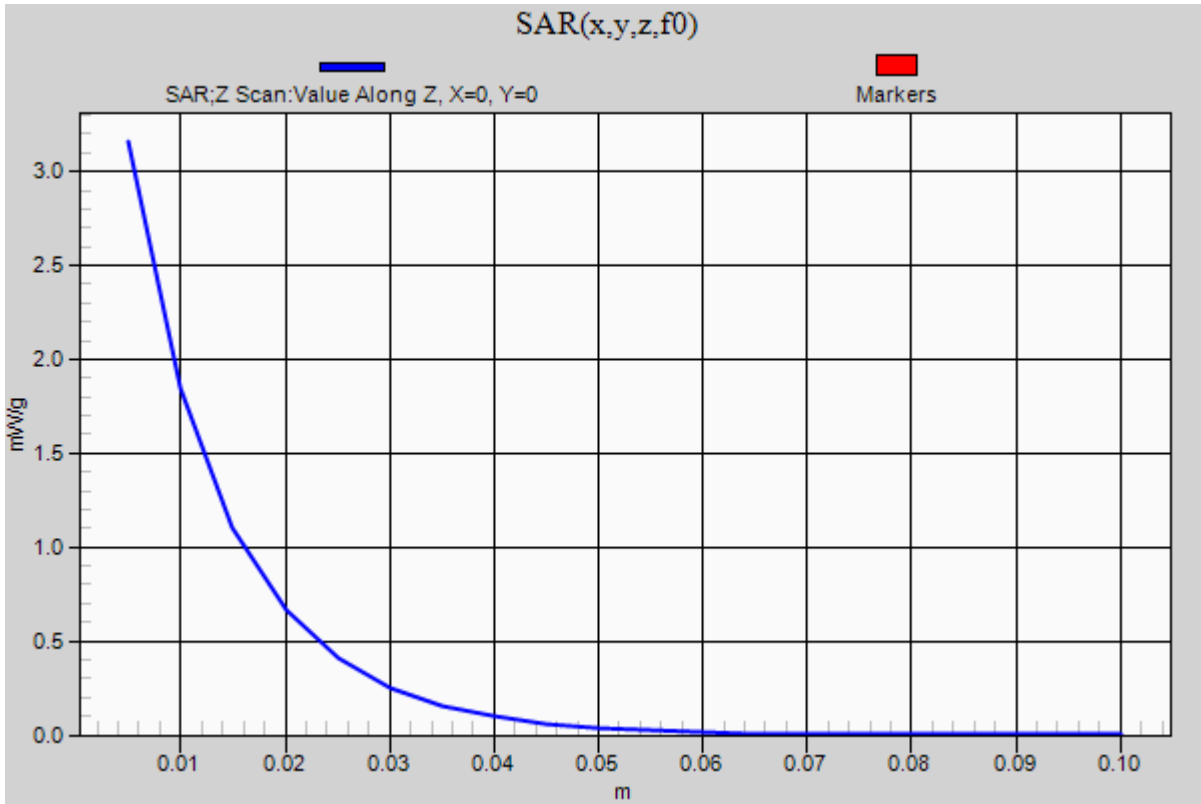
Test Laboratory: UL CCS SAR Lab B

20120208_SystemPerformanceCheck-D1900V2 SN 5d140

Communication System: CW; Frequency: 1900 MHz; Duty Cycle: 1:1

Body/Pin=100 mW/Z Scan (1x1x21): Measurement grid: dx=20mm, dy=20mm, dz=5mm

Maximum value of SAR (measured) = 3.159 mW/g



Test Laboratory: UL CCS SAR Lab B

20120209_SystemPerformanceCheck-D835V2 SN 4d117

Communication System: CW; Frequency: 835 MHz; Duty Cycle: 1:1
Medium parameters used: $f = 835 \text{ MHz}$; $\sigma = 0.991 \text{ mho/m}$; $\epsilon_r = 53.474$; $\rho = 1000 \text{ kg/m}^3$
Phantom section: Flat Section

Room Ambient Temperature: 24.0 deg. C; Liquid Temperature: 23.0 deg. C

DASY5 Configuration:

- Area Scan setting - Find Secondary Maximum Within: 2.0 dB and with a peak SAR value greater than 0.0012W/kg
- Probe: EX3DV3 - SN3531; ConvF(10, 10, 10); Calibrated: 12/19/2011
- Sensor-Surface: 2.5mm (Mechanical Surface Detection)
- Electronics: DAE4 Sn1258; Calibrated: 5/2/2011
- Phantom: ELI v5.0 (B); Type: QDOVA001BB; Serial: 1118
- Measurement SW: DASY52, Version 52.8 (0); SEMCAD X Version 14.6.4 (4989)

Body/Pin=100 mW/Area Scan (7x7x1): Measurement grid: dx=15mm, dy=15mm

Maximum value of SAR (measured) = 1.140 mW/g

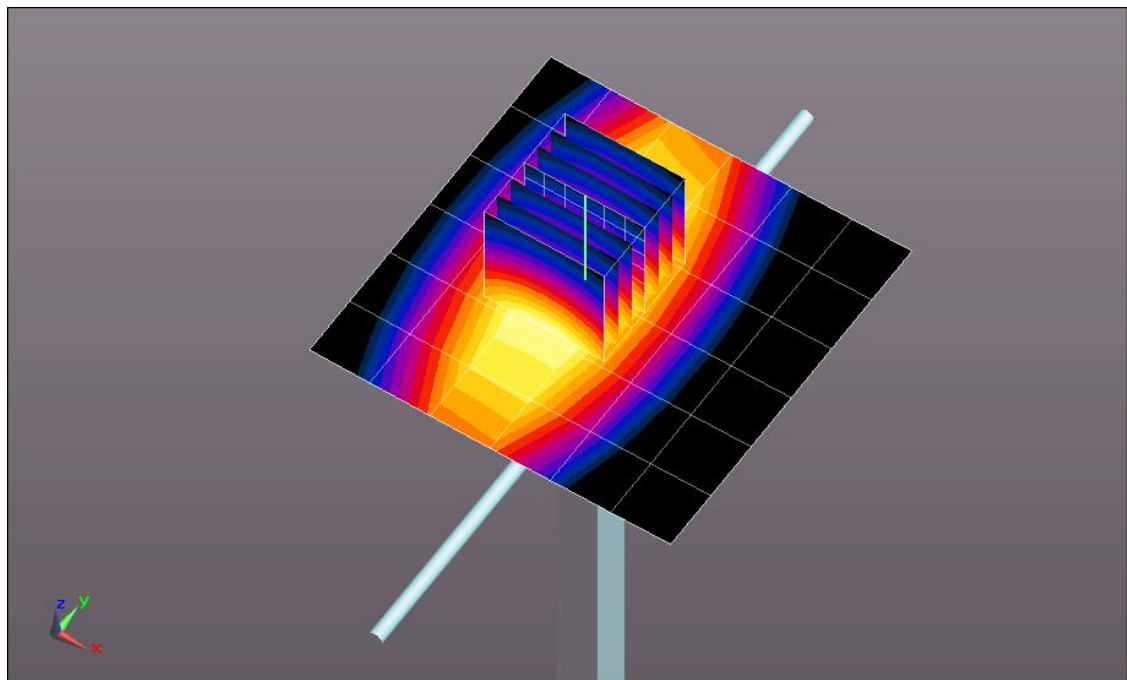
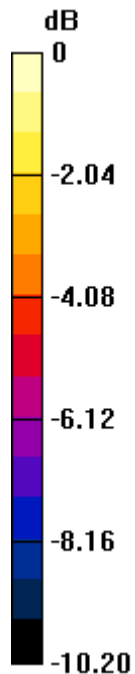
Body/Pin=100 mW/Zoom Scan (7x7x7)/Cube 0: Measurement grid: dx=5mm, dy=5mm, dz=5mm

Reference Value = 36.145 V/m; Power Drift = 0.01 dB

Peak SAR (extrapolated) = 1.5540

SAR(1 g) = 1.06 mW/g; SAR(10 g) = 0.703 mW/g

Maximum value of SAR (measured) = 1.285 mW/g



0 dB = 1.280mW/g = 2.14 dB mW/g

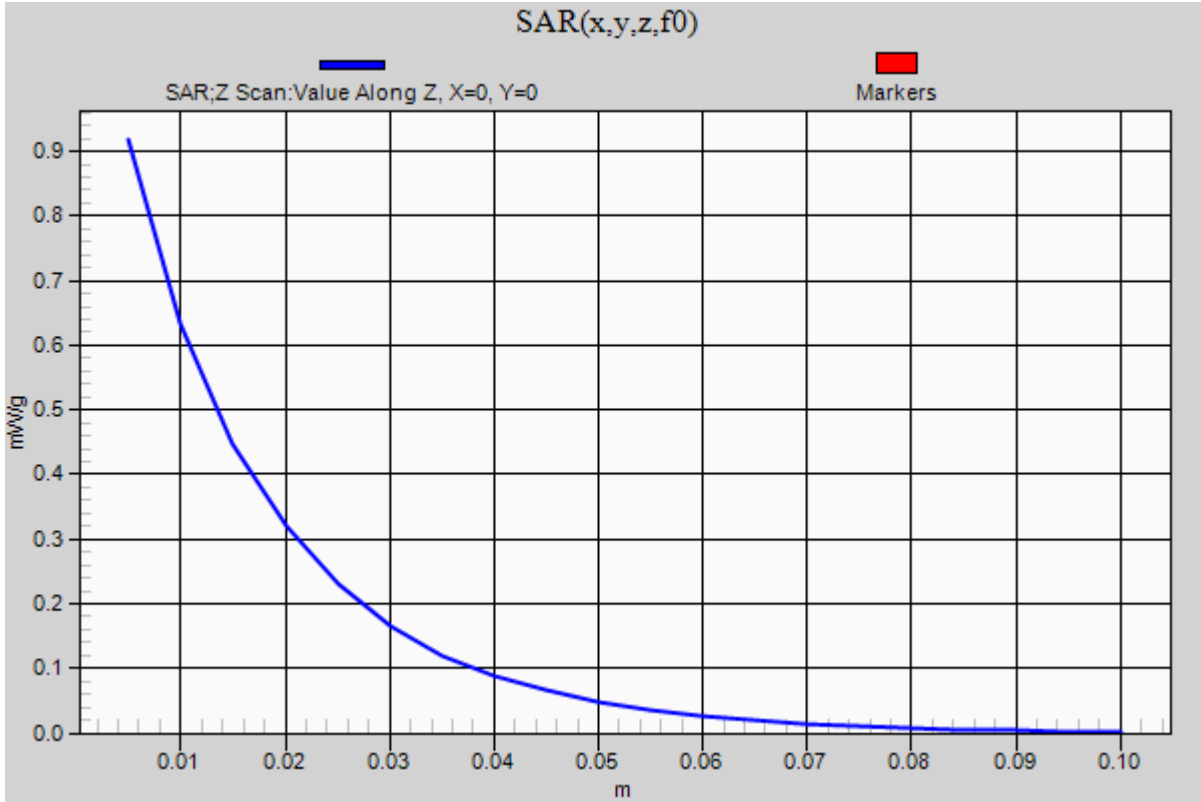
Test Laboratory: UL CCS SAR Lab B

20120209_SystemPerformanceCheck-D835V2 SN 4d117

Communication System: CW; Frequency: 835 MHz; Duty Cycle: 1:1

Body/Pin=100 mW/Z Scan (1x1x21): Measurement grid: dx=20mm, dy=20mm, dz=5mm

Maximum value of SAR (measured) = 0.918 mW/g



Test Laboratory: UL CCS SAR Lab B

20120215_SystemPerformanceCheck-D2450V2 SN 706

Communication System: CW; Frequency: 2450 MHz; Duty Cycle: 1:1
 Medium parameters used: $f = 2450$ MHz; $\sigma = 1.959$ mho/m; $\epsilon_r = 54.415$; $\rho = 1000$ kg/m³
 Phantom section: Flat Section

Room Ambient Temperature: 24.0 deg. C; Liquid Temperature: 23.0 deg. C

DASY5 Configuration:

- Area Scan setting - Find Secondary Maximum Within: 2.0 dB and with a peak SAR value greater than 0.0012W/kg
- Probe: EX3DV3 - SN3531; ConvF(7.44, 7.44, 7.44); Calibrated: 12/19/2011
- Sensor-Surface: 2.5mm (Mechanical Surface Detection)
- Electronics: DAE4 Sn1258; Calibrated: 5/2/2011
- Phantom: ELI v5.0 (B); Type: QDOVA001BB; Serial: 1118
- Measurement SW: DASY52, Version 52.8 (0); SEMCAD X Version 14.6.4 (4989)

Body/Pin=100 mW/Area Scan (7x7x1): Measurement grid: dx=15mm, dy=15mm

Maximum value of SAR (measured) = 5.107 mW/g

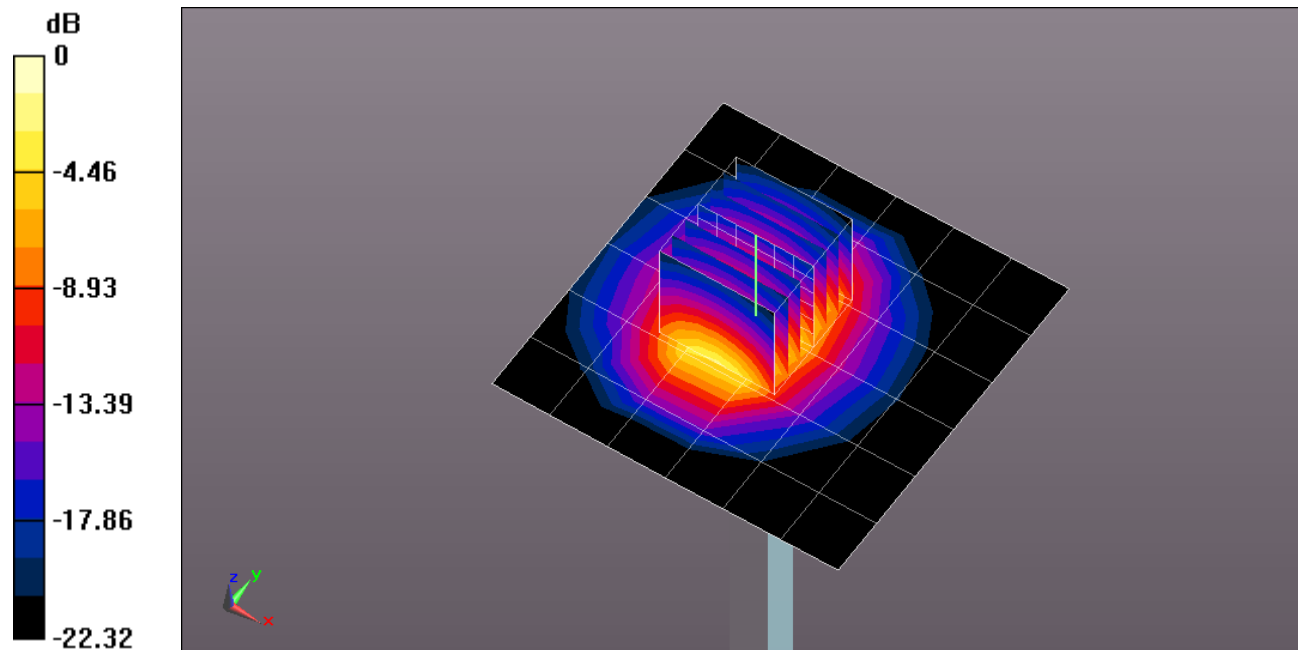
Body/Pin=100 mW/Zoom Scan (7x7x7)/Cube 0: Measurement grid: dx=5mm, dy=5mm, dz=5mm

Reference Value = 60.532 V/m; Power Drift = 0.05 dB

Peak SAR (extrapolated) = 11.3740

SAR(1 g) = 5.42 mW/g; SAR(10 g) = 2.5 mW/g

Maximum value of SAR (measured) = 7.703 mW/g



0 dB = 7.700mW/g = 17.73 dB mW/g

Test Laboratory: UL CCS SAR Lab B

20120215_SystemPerformanceCheck-D2450V2 SN 706

Communication System: CW; Frequency: 2450 MHz; Duty Cycle: 1:1

Body/Pin=100 mW/Z Scan (1x1x21): Measurement grid: dx=20mm, dy=20mm, dz=5mm

Maximum value of SAR (measured) = 4.249 mW/g

