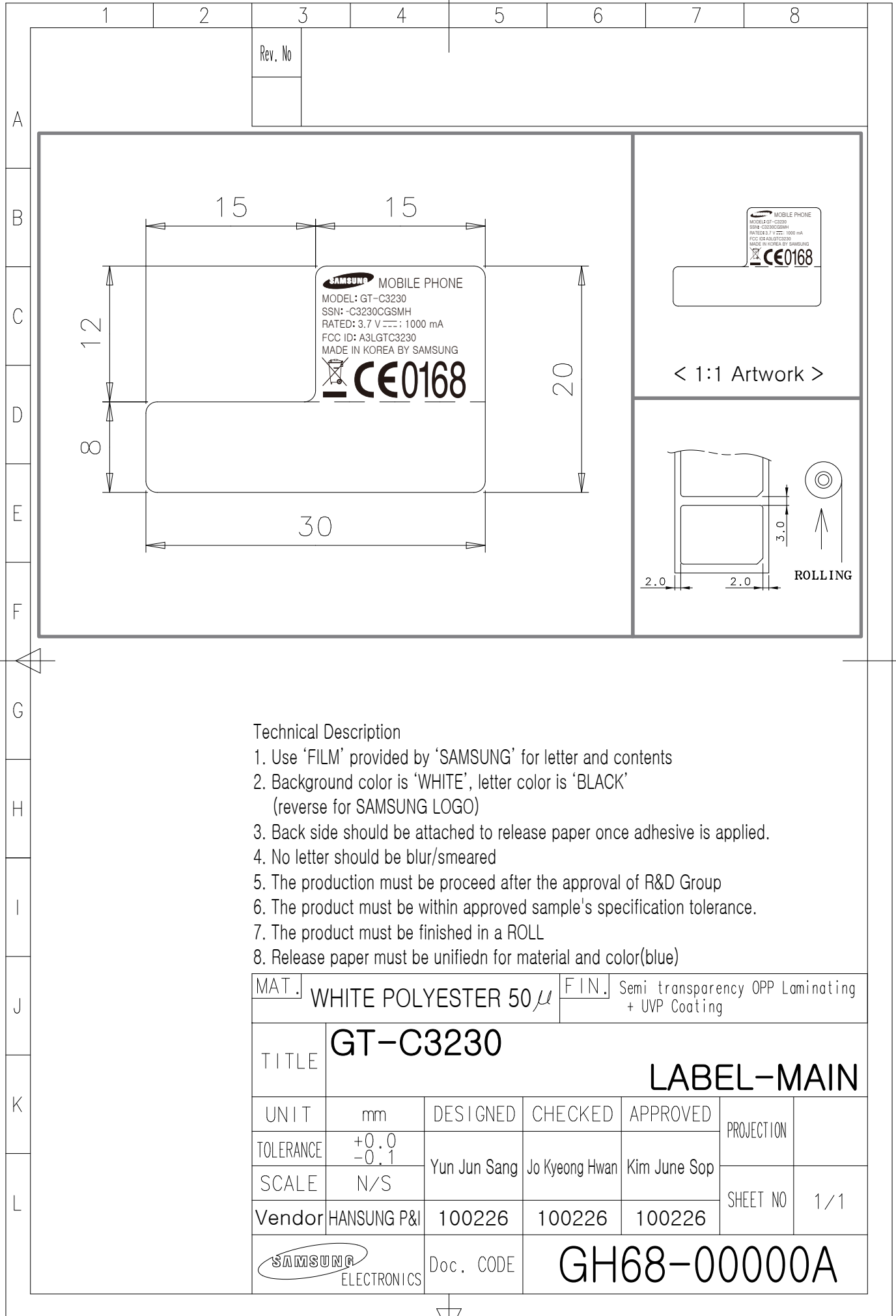


This drawing is property of SEC. Use or copy of this drawing without proper permission from the appropriate technical-document managing department is prohibited.



Technical Description

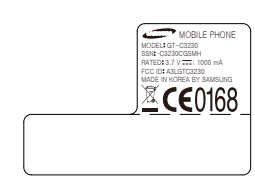
1. Use 'FILM' provided by 'SAMSUNG' for letter and contents
2. Background color is 'WHITE', letter color is 'BLACK'
(reverse for SAMSUNG LOGO)
3. Back side should be attached to release paper once adhesive is applied.
4. No letter should be blur/smeared
5. The production must be proceed after the approval of R&D Group
6. The product must be within approved sample's specification tolerance.
7. The product must be finished in a ROLL
8. Release paper must be unifiedn for material and color(blue)

MAT. WHITE POLYESTER 50 μ		FIN. Semi transparency OPP Laminating + UVP Coating	
TITLE		GT-C3230	
		LABEL-MAIN	
UNIT	mm	DESIGNED	CHECKED
TOLERANCE	+0.0 -0.1	Yun Jun Sang	Jo Kyeong Hwan
SCALE	N/S		Kim June Sop
Vendor	HANSUNG P&I	100226	100226
		100226	
SAMSUNG ELECTRONICS		Doc. CODE	
		GH68-00000A	

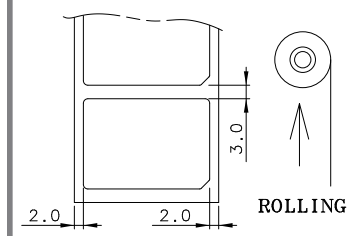
A
B
C
D
E
F
G
H
I
J
K
L

1 2 3 4 5 6 7 8

Rev. No



< 1:1 Artwork >





The label is placed inside the battery compartment

Note: The FCC ID label shown will be readily visible at the time of purchase.