

20120610 SystemPerformanceCheck-D1900V2 SN 5d140

Frequency: 1900 MHz; Duty Cycle: 1:1; Room Ambient Temperature: 24.0°C; Liquid Temperature: 23.0°C
 Medium parameters used: $f = 1900$ MHz; $\sigma = 1.441$ mho/m; $\epsilon_r = 41.416$; $\rho = 1000$ kg/m³

DASY5 Configuration:

- Electronics: DAE4 Sn1257; Calibrated: 10/25/2011
- Probe: EX3DV4 - SN3751; ConvF(7.33, 7.33, 7.33); Calibrated: 12/19/2011
- Sensor-Surface: 2.5mm (Mechanical Surface Detection (Locations From Previous Scan Used)), Sensor-Surface: 2.5mm (Mechanical Surface Detection)
- Phantom: SAM; Type: QD000P40CD; Serial: 1632

Head/Pin=100 mW/Area Scan (7x7x1): Measurement grid: dx=15mm, dy=15mm

Maximum value of SAR (measured) = 3.908 mW/g

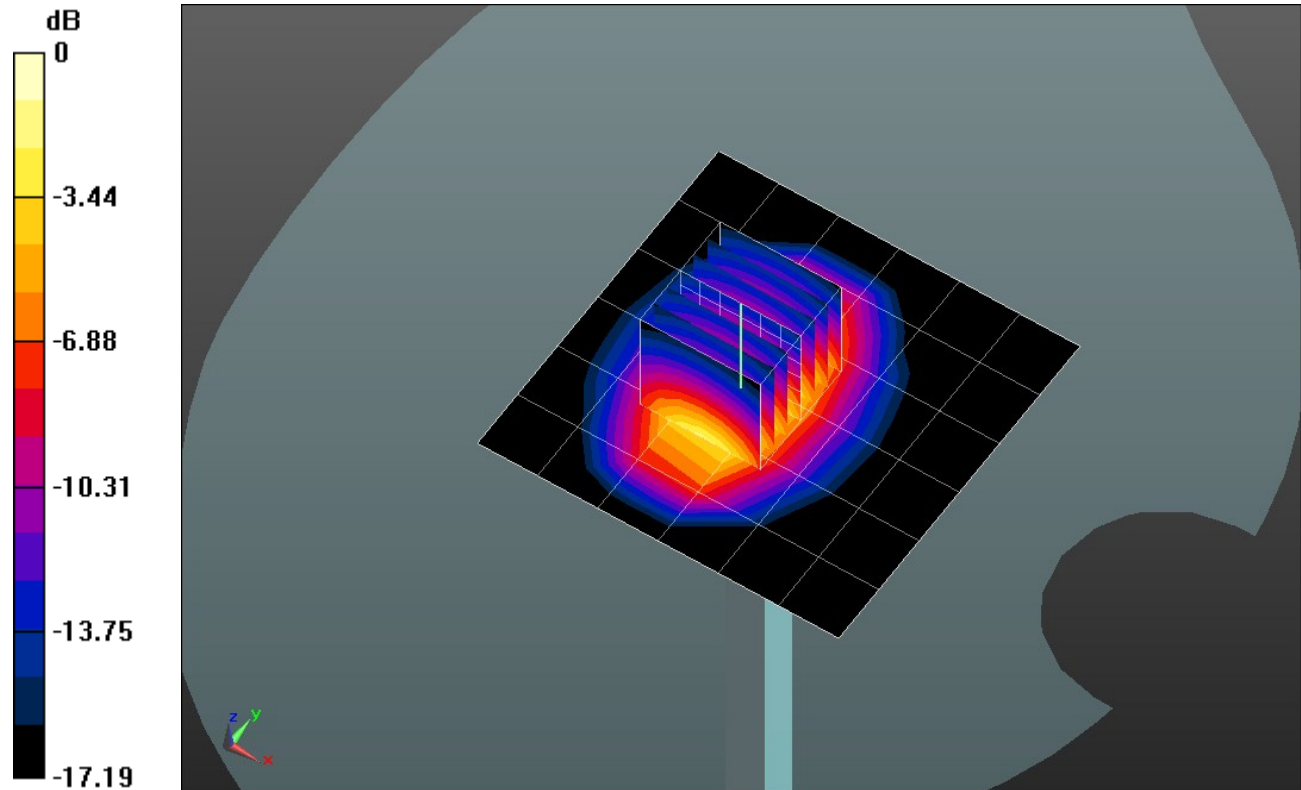
Head/Pin=100 mW/Zoom Scan (7x7x7)/Cube 0: Measurement grid: dx=5mm, dy=5mm, dz=5mm

Reference Value = 61.328 V/m; Power Drift = 0.10 dB

Peak SAR (extrapolated) = 7.6970

SAR(1 g) = 4.17 mW/g; SAR(10 g) = 2.18 mW/g

Maximum value of SAR (measured) = 5.634 mW/g

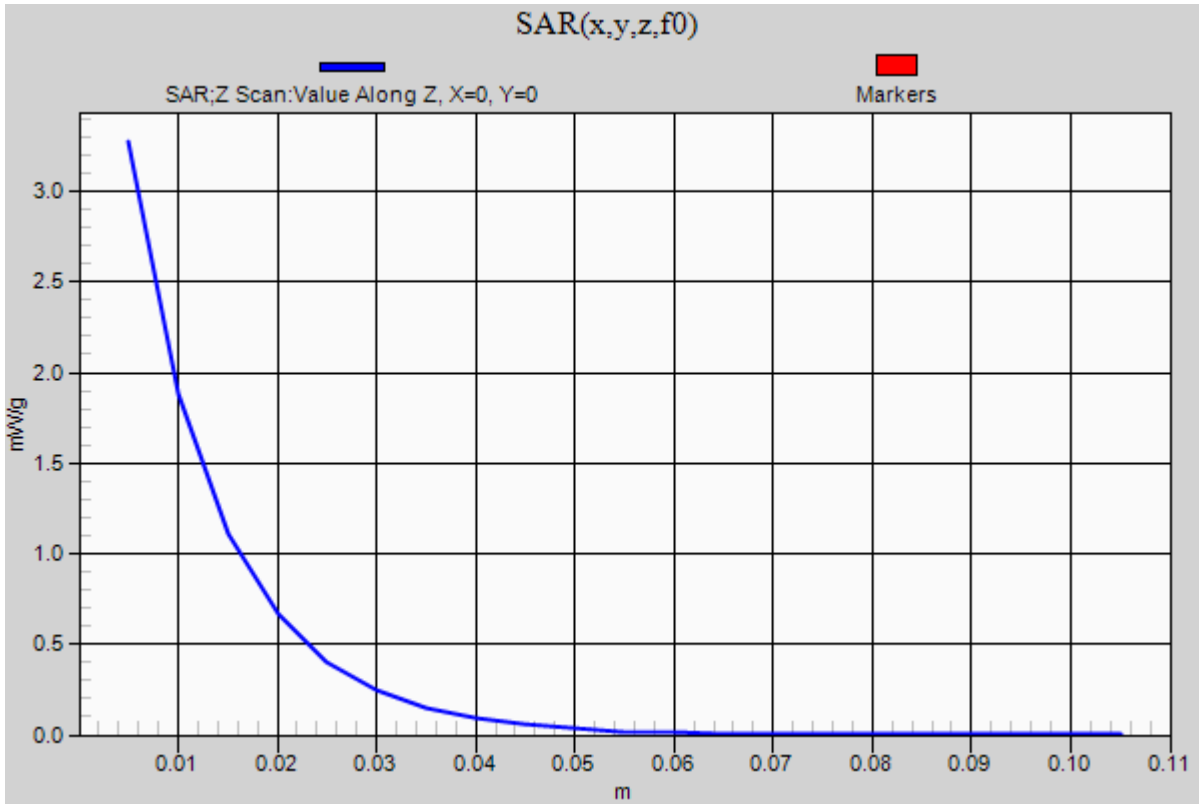


0 dB = 5.630mW/g = 15.01 dB mW/g

20120610 SystemPerformanceCheck-D1900V2 SN 5d140

Frequency: 1900 MHz; Duty Cycle: 1:1

Head/Pin=100 mW/Z Scan (1x1x21): Measurement grid: dx=20mm, dy=20mm, dz=5mm
Maximum value of SAR (measured) = 3.273 mW/g



20120610 SystemPerformanceCheck-D835V2 SN 4d002

Frequency: 835 MHz; Duty Cycle: 1:1; Room Ambient Temperature: 24.0°C; Liquid Temperature: 23.0°C
 Medium parameters used: $f = 835 \text{ MHz}$; $\sigma = 0.904 \text{ mho/m}$; $\epsilon_r = 41.866$; $\rho = 1000 \text{ kg/m}^3$

DASY5 Configuration:

- Electronics: DAE4 Sn1257; Calibrated: 10/25/2011
- Probe: EX3DV4 - SN3751; ConvF(8.35, 8.35, 8.35); Calibrated: 12/19/2011
- Sensor-Surface: 2.5mm (Mechanical Surface Detection (Locations From Previous Scan Used)), Sensor-Surface: 2.5mm (Mechanical Surface Detection)
- Phantom: SAM; Type: QD000P40CD; Serial: 1632

Head/Pin=100 mW/Area Scan (7x7x1): Measurement grid: $dx=15\text{mm}$, $dy=15\text{mm}$

Maximum value of SAR (measured) = 0.945 mW/g

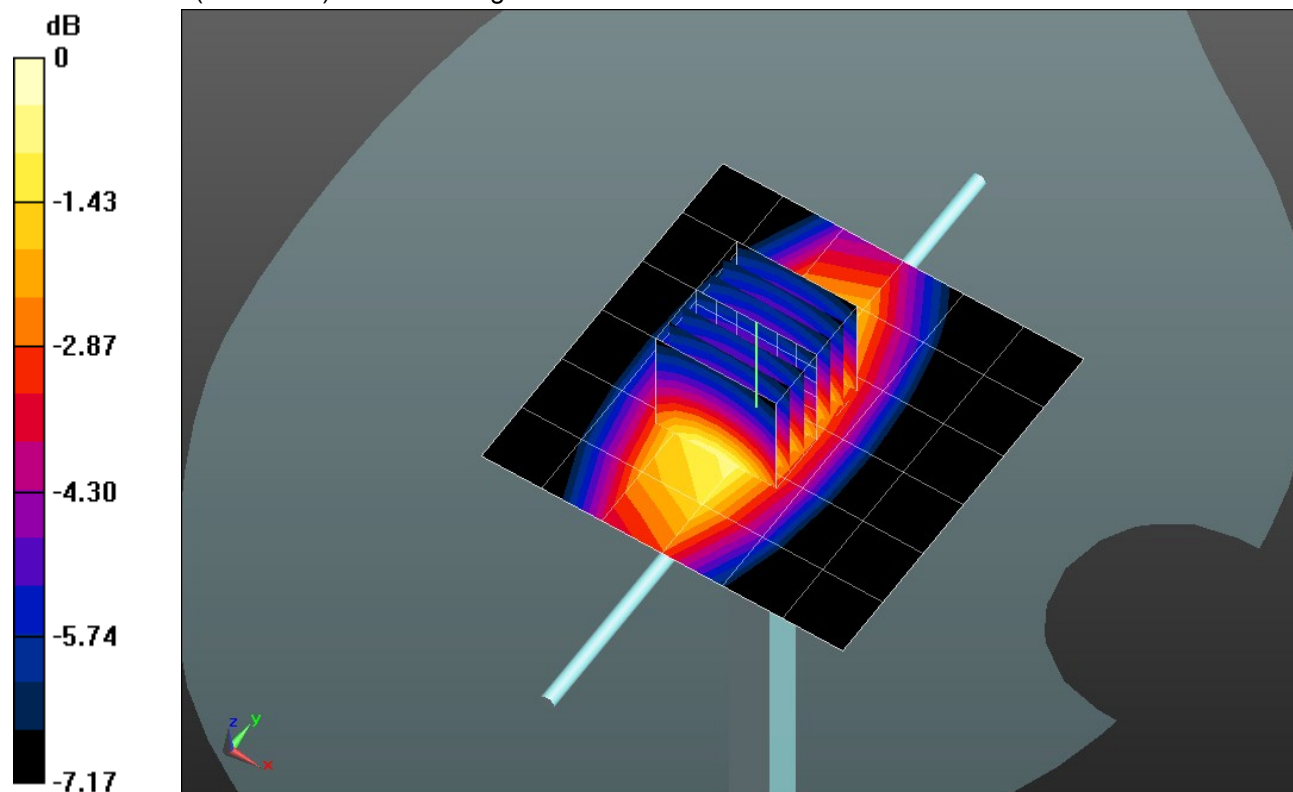
Head/Pin=100 mW/Zoom Scan (7x7x7)/Cube 0: Measurement grid: $dx=5\text{mm}$, $dy=5\text{mm}$, $dz=5\text{mm}$

Reference Value = 34.395 V/m; Power Drift = -0.04 dB

Peak SAR (extrapolated) = 1.1830

SAR(1 g) = 0.889 mW/g; SAR(10 g) = 0.645 mW/g

Maximum value of SAR (measured) = 1.028 mW/g

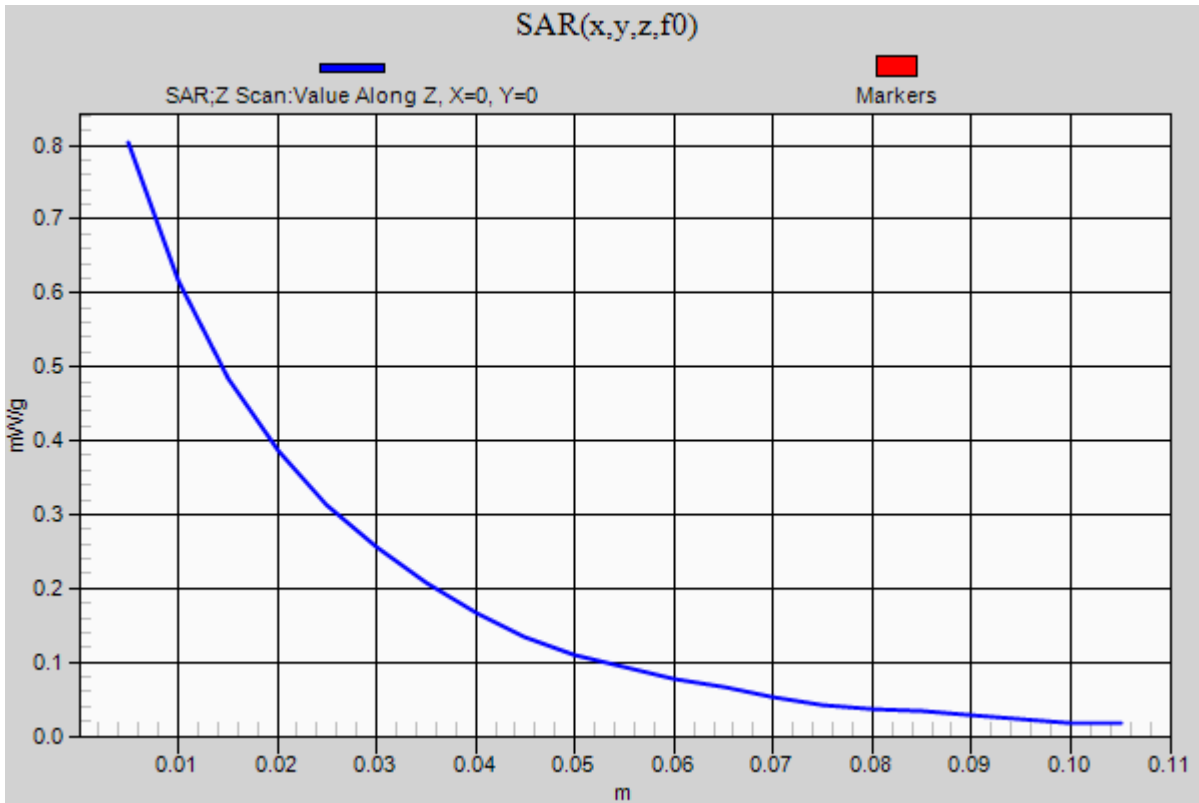


0 dB = 1.030mW/g = 0.26 dB mW/g

20120610 SystemPerformanceCheck-D835V2 SN 4d002

Frequency: 835 MHz; Duty Cycle: 1:1

Head/Pin=100 mW/Z Scan (1x1x21): Measurement grid: dx=20mm, dy=20mm, dz=5mm
Maximum value of SAR (measured) = 0.803 mW/g



20120612 SystemPerformanceCheck-D1900V2 SN 5d140

Frequency: 1900 MHz; Duty Cycle: 1:1; Room Ambient Temperature: 24.0°C; Liquid Temperature: 23.0°C
 Medium parameters used: $f = 1900 \text{ MHz}$; $\sigma = 1.511 \text{ mho/m}$; $\epsilon_r = 53.05$; $\rho = 1000 \text{ kg/m}^3$

DASY5 Configuration:

- Electronics: DAE4 Sn1257; Calibrated: 10/25/2011
- Probe: EX3DV4 - SN3751; ConvF(6.83, 6.83, 6.83); Calibrated: 12/19/2011
- Sensor-Surface: 2.5mm (Mechanical Surface Detection)
- Phantom: ELI v5.0 (A); Type: QDOVA001BB; Serial: 1120

Body/Pin=100 mW/Area Scan (7x7x1): Measurement grid: $dx=15\text{mm}$, $dy=15\text{mm}$

Maximum value of SAR (measured) = 4.946 mW/g

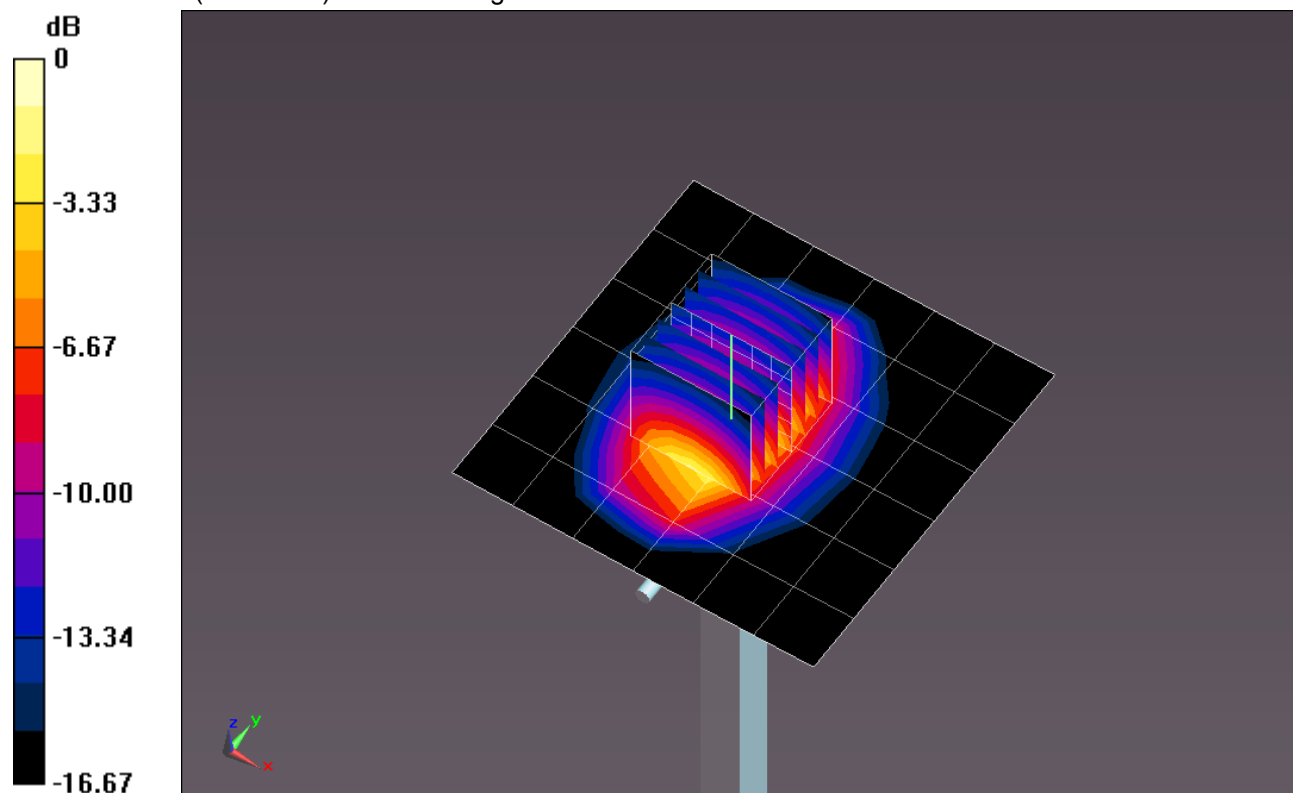
Body/Pin=100 mW/Zoom Scan (7x7x7)/Cube 0: Measurement grid: $dx=5\text{mm}$, $dy=5\text{mm}$, $dz=5\text{mm}$

Reference Value = 62.675 V/m; Power Drift = -0.07 dB

Peak SAR (extrapolated) = 7.7300

SAR(1 g) = 4.31 mW/g; SAR(10 g) = 2.27 mW/g

Maximum value of SAR (measured) = 5.803 mW/g

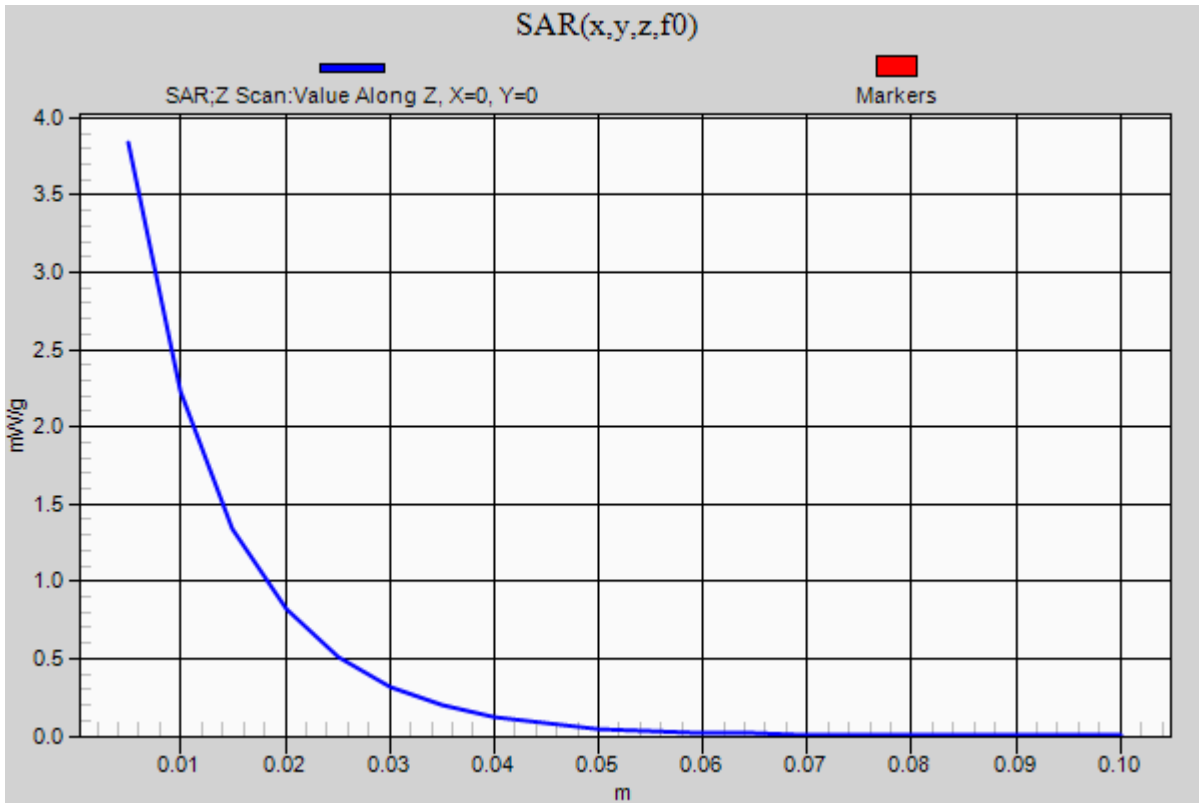


0 dB = 5.800mW/g = 15.27 dB mW/g

20120612 SystemPerformanceCheck-D1900V2 SN 5d140

Frequency: 1900 MHz; Duty Cycle: 1:1

Body/Pin=100 mW/Z Scan (1x1x21): Measurement grid: dx=20mm, dy=20mm, dz=5mm
Maximum value of SAR (measured) = 3.839 mW/g



20120613 SystemPerformanceCheck-D835V2 SN 4d002

Frequency: 835 MHz; Duty Cycle: 1:1; Room Ambient Temperature: 24.0°C; Liquid Temperature: 23.0°C
 Medium parameters used: $f = 835 \text{ MHz}$; $\sigma = 0.998 \text{ mho/m}$; $\epsilon_r = 54.685$; $\rho = 1000 \text{ kg/m}^3$

DASY5 Configuration:

- Electronics: DAE4 Sn1257; Calibrated: 10/25/2011
- Probe: EX3DV4 - SN3751; ConvF(8.64, 8.64, 8.64); Calibrated: 12/19/2011
- Sensor-Surface: 2.5mm (Mechanical Surface Detection (Locations From Previous Scan Used)), Sensor-Surface: 2.5mm (Mechanical Surface Detection)
- Phantom: ELI v5.0 (B); Type: QDOVA001BB; Serial: 1121

Body/Pin=100 mW/Area Scan (7x7x1): Measurement grid: dx=15mm, dy=15mm

Maximum value of SAR (measured) = 1.154 mW/g

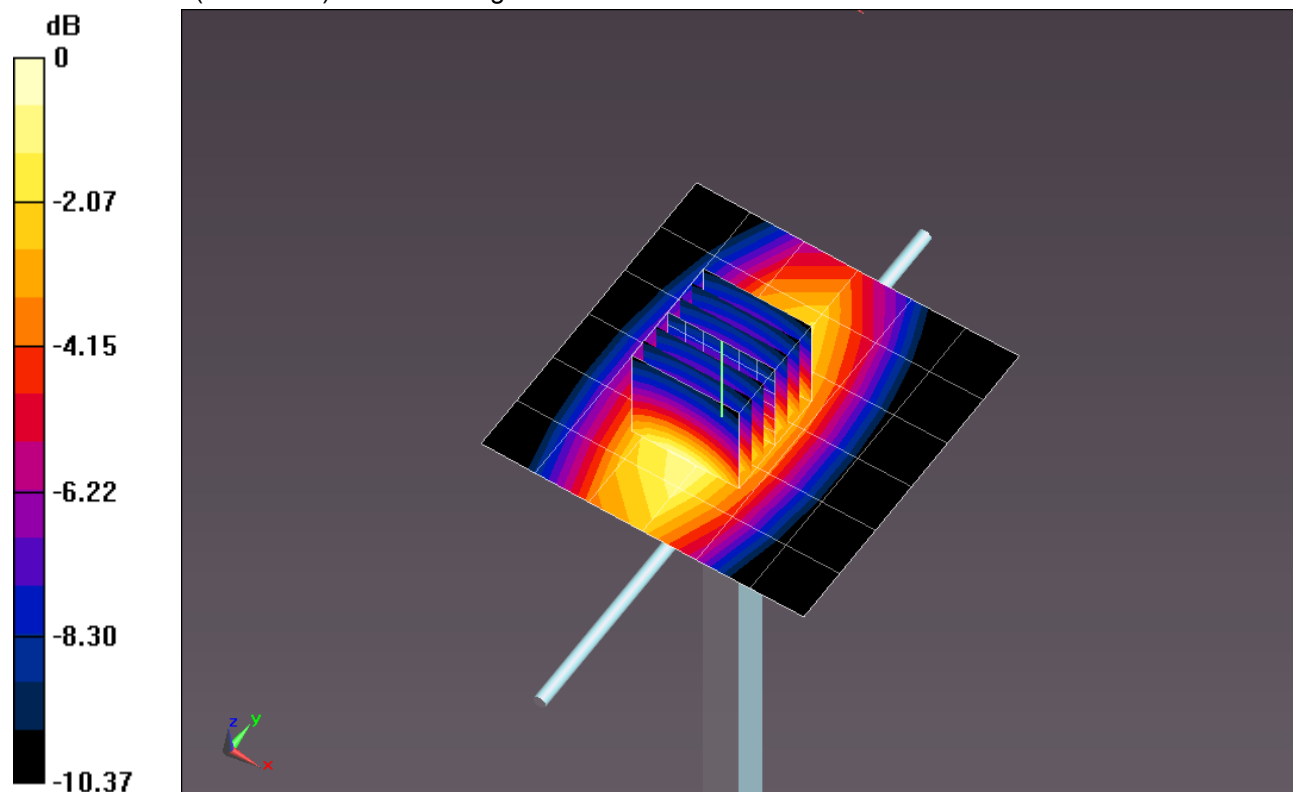
Body/Pin=100 mW/Zoom Scan (7x7x7)/Cube 0: Measurement grid: dx=5mm, dy=5mm, dz=5mm

Reference Value = 35.077 V/m; Power Drift = -0.0056 dB

Peak SAR (extrapolated) = 1.5020

SAR(1 g) = 1.01 mW/g; SAR(10 g) = 0.664 mW/g

Maximum value of SAR (measured) = 1.223 mW/g

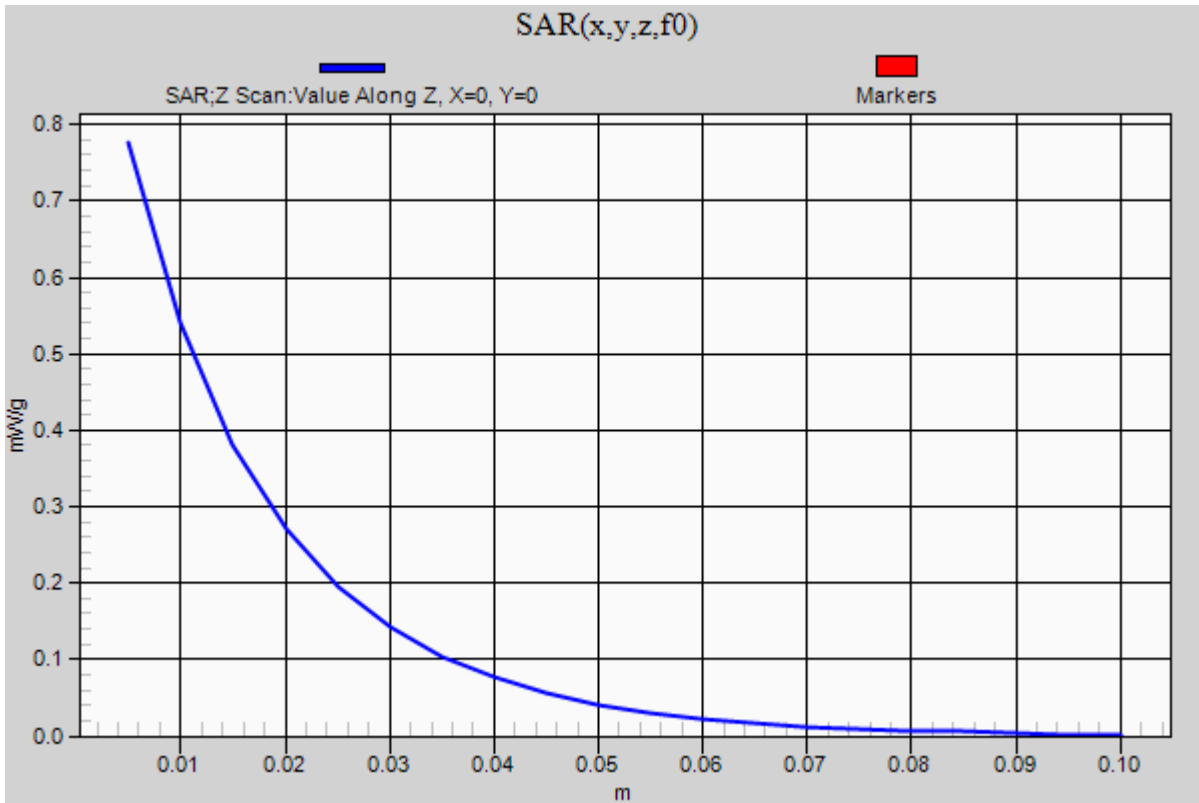


0 dB = 1.220mW/g = 1.73 dB mW/g

20120613 SystemPerformanceCheck-D835V2 SN 4d002

Frequency: 835 MHz; Duty Cycle: 1:1

Body/Pin=100 mW/Z Scan (1x1x21): Measurement grid: dx=20mm, dy=20mm, dz=5mm
Maximum value of SAR (measured) = 0.776 mW/g



20120614 SystemPerformanceCheck-D2450V2 SN 748

Frequency: 2450 MHz; Duty Cycle: 1:1; Room Ambient Temperature: 24.0°C; Liquid Temperature: 23.0°C
 Medium parameters used: $f = 2450$ MHz; $\sigma = 1.814$ mho/m; $\epsilon_r = 39.809$; $\rho = 1000$ kg/m³

DASY5 Configuration:

- Electronics: DAE4 Sn1257; Calibrated: 10/25/2011
- Probe: EX3DV4 - SN3751; ConvF(6.53, 6.53, 6.53); Calibrated: 12/19/2011
- Sensor-Surface: 2.5mm (Mechanical Surface Detection (Locations From Previous Scan Used)), Sensor-Surface: 2.5mm (Mechanical Surface Detection)
- Phantom: SAM; Type: QD000P40CD; Serial: 1632

Head/Pin=100 mW/Area Scan (7x7x1): Measurement grid: dx=15mm, dy=15mm

Maximum value of SAR (measured) = 4.811 mW/g

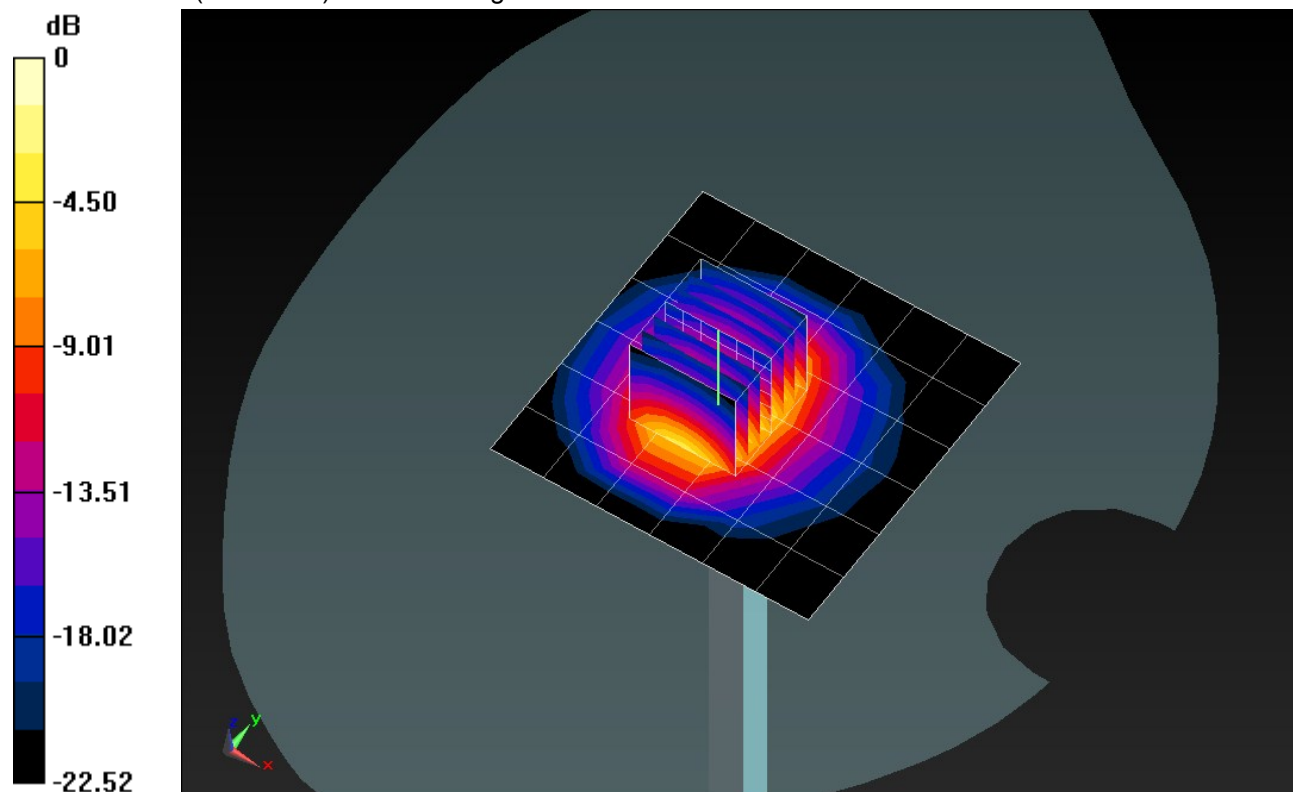
Head/Pin=100 mW/Zoom Scan (7x7x7)/Cube 0: Measurement grid: dx=5mm, dy=5mm, dz=5mm

Reference Value = 62.905 V/m; Power Drift = 0.01 dB

Peak SAR (extrapolated) = 11.0790

SAR(1 g) = 5.31 mW/g; SAR(10 g) = 2.46 mW/g

Maximum value of SAR (measured) = 7.517 mW/g

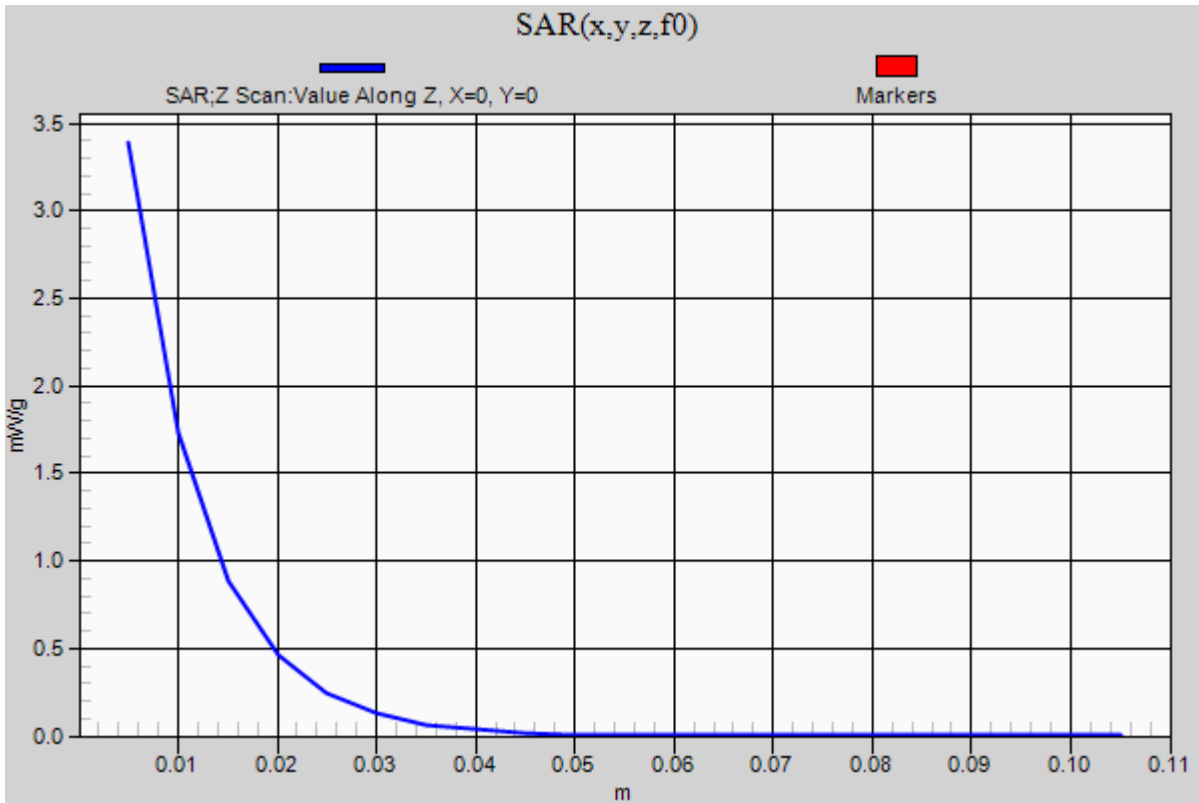


0 dB = 7.520mW/g = 17.52 dB mW/g

20120614 SystemPerformanceCheck-D2450V2 SN 748

Frequency: 2450 MHz; Duty Cycle: 1:1

Head/Pin=100 mW/Z Scan (1x1x21): Measurement grid: dx=20mm, dy=20mm, dz=5mm
Maximum value of SAR (measured) = 3.388 mW/g



20120614 SystemPerformanceCheck-D2450V2 SN 748

Frequency: 2450 MHz; Duty Cycle: 1:1; Room Ambient Temperature: 24.0°C; Liquid Temperature: 23.0°C
 Medium parameters used: $f = 2450$ MHz; $\sigma = 1.969$ mho/m; $\epsilon_r = 51.965$; $\rho = 1000$ kg/m³

DASY5 Configuration:

- Electronics: DAE4 Sn1257; Calibrated: 10/25/2011
- Probe: EX3DV4 - SN3751; ConvF(6.62, 6.62, 6.62); Calibrated: 12/19/2011
- Sensor-Surface: 2.5mm (Mechanical Surface Detection (Locations From Previous Scan Used)), Sensor-Surface: 2.5mm (Mechanical Surface Detection)
- Phantom: ELI v5.0 (A); Type: QDOVA001BB; Serial: 1120

Body/Pin=100 mW/Area Scan (7x7x1): Measurement grid: dx=15mm, dy=15mm

Maximum value of SAR (measured) = 6.730 mW/g

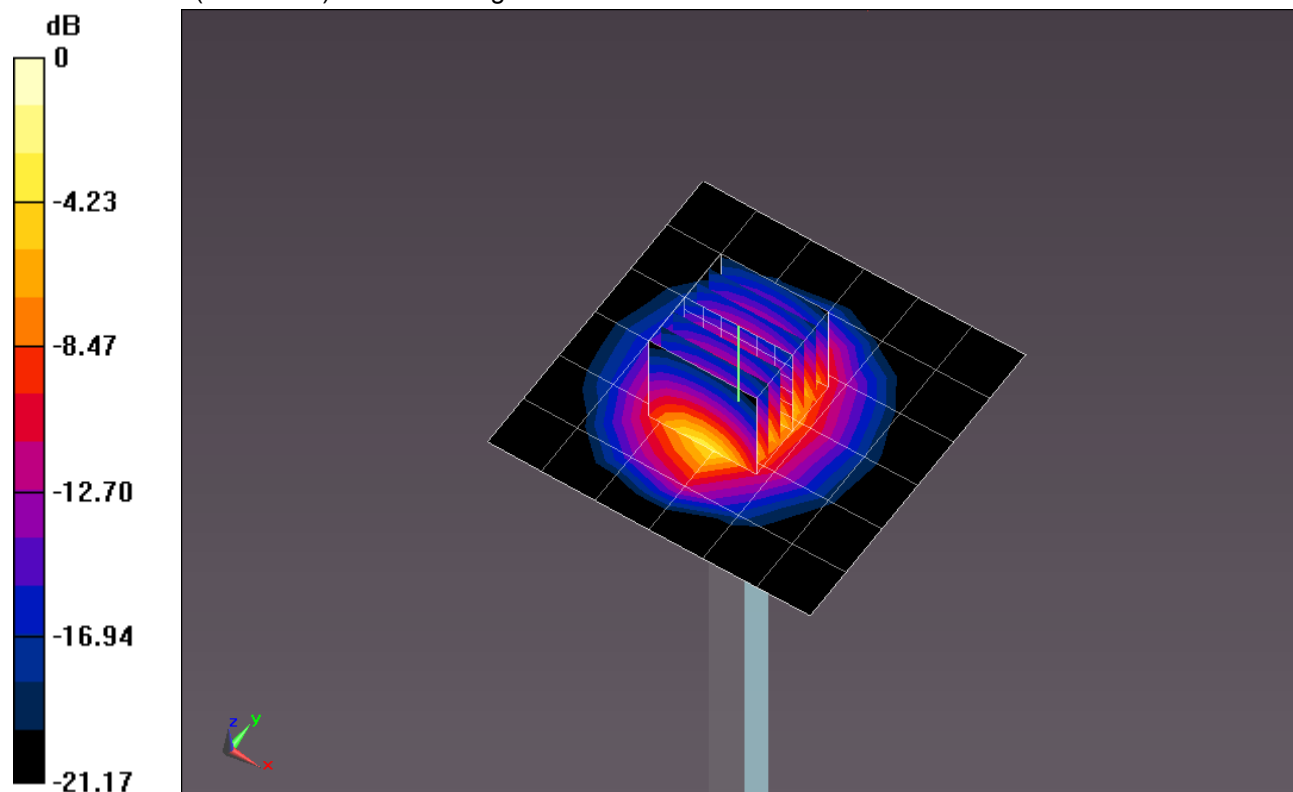
Body/Pin=100 mW/Zoom Scan (7x7x7)/Cube 0: Measurement grid: dx=5mm, dy=5mm, dz=5mm

Reference Value = 59.668 V/m; Power Drift = -0.10 dB

Peak SAR (extrapolated) = 10.4810

SAR(1 g) = 5.15 mW/g; SAR(10 g) = 2.41 mW/g

Maximum value of SAR (measured) = 7.286 mW/g



0 dB = 7.290mW/g = 17.25 dB mW/g

20120614 SystemPerformanceCheck-D2450V2 SN 748

Frequency: 2450 MHz; Duty Cycle: 1:1

Body/Pin=100 mW/Z Scan (1x1x21): Measurement grid: dx=20mm, dy=20mm, dz=5mm
Maximum value of SAR (measured) = 4.157 mW/g

