

QUICK START GUIDE

EP-P6300

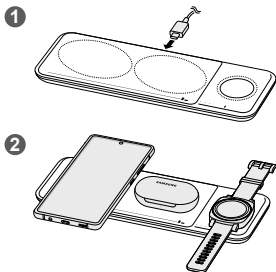
WIRELESS CHARGER TRIO

SAMSUNG

Printed in Korea
A00000 Rev.1.0
USA Type 08/2020

P6300_QSG_USA_Type.indd 1

English



Copyright © 2020 Samsung Electronics America, Inc.

Other marks are the property of their respective owners.

- Connect the charger to the wireless charger (1) and place the mobile device, Buds or the watch on the phone stand (2) to charge it.
- Do not place foreign materials, such as metal objects, magnets, and magnetic stripe cards, between the mobile device, Buds or the watch, and the wireless charger.
- Visit www.samsung.com to view the user manual and the safety information.
- Your consumer rights are governed by the law of the country in which you purchased the product. Please contact your service provider for more information.

FCC Part 15.19

This device complies with part 15 of the FCC Rules. Operation is subject to the following two conditions: (1) This device may not cause harmful interference, and (2) this device must accept any interference received, including interference that may cause undesired operation.

FCC Part 15.21

Any changes or modifications (including the antennas) to this device that are not expressly approved by the manufacturer may void the user's authority to operate the equipment.

This device contains licence-exempt transmitter(s)/receiver(s) that comply with Innovation, Science and Economic Development Canada's licence-exempt RSS(s). Operation is subject to the following two conditions:

- (1) This device may not cause interference.
- (2) This device must accept any interference, including interference that may cause undesired operation of the device.

L'émetteur/récepteur exempt de licence contenu dans le présent appareil est conforme aux CNR d'Innovation, Sciences et Développement économique Canada applicables aux appareils radio exempts de licence. L'exploitation est autorisée aux deux conditions suivantes :

- (1) L'appareil ne doit pas produire de brouillage;
- (2) L'appareil doit accepter tout brouillage radioélectrique subi, même si le brouillage est susceptible d'en compromettre le fonctionnement.

Cet équipement est conforme aux limites établies par Industrie Canada en matière d'exposition aux radiofréquences dans un environnement non contrôlé.

Cet appareil et son antenne ne doivent pas être colocalisés ou fonctionner en conjonction avec tout autre antenne ou émetteur. Cet équipement doit être installé et utilisé avec une distance minimale de 20cm entre le radiateur et votre corps.

FCC RF Radiation Exposure Statement

This equipment complies with FCC RF Radiation exposure limits set forth for an uncontrolled environment. This device and its antenna must not be co-located or operating in conjunction with any other antenna or transmitter. This equipment should be installed and operated with a minimum distance of 20 cm between the radiator and your body.

Samsung Mobile Products and Recycling

Samsung cares for the environment and encourages its customers to properly dispose of Devices and Samsung accessories in accordance with local regulations. In some areas, disposal of these items in household or business trash may be prohibited. Dispose of other unwanted electronics through an approved recycler. To find the nearest recycling location, go to our website: www.samsung.com/recycling or call, 1-800-SAMSUNG.

Samsung Electronics America, Inc

85 Challenger Road,
Ridgefield Park, New Jersey, 07660
Phone: 1-800-SAMSUNG (726-7864)