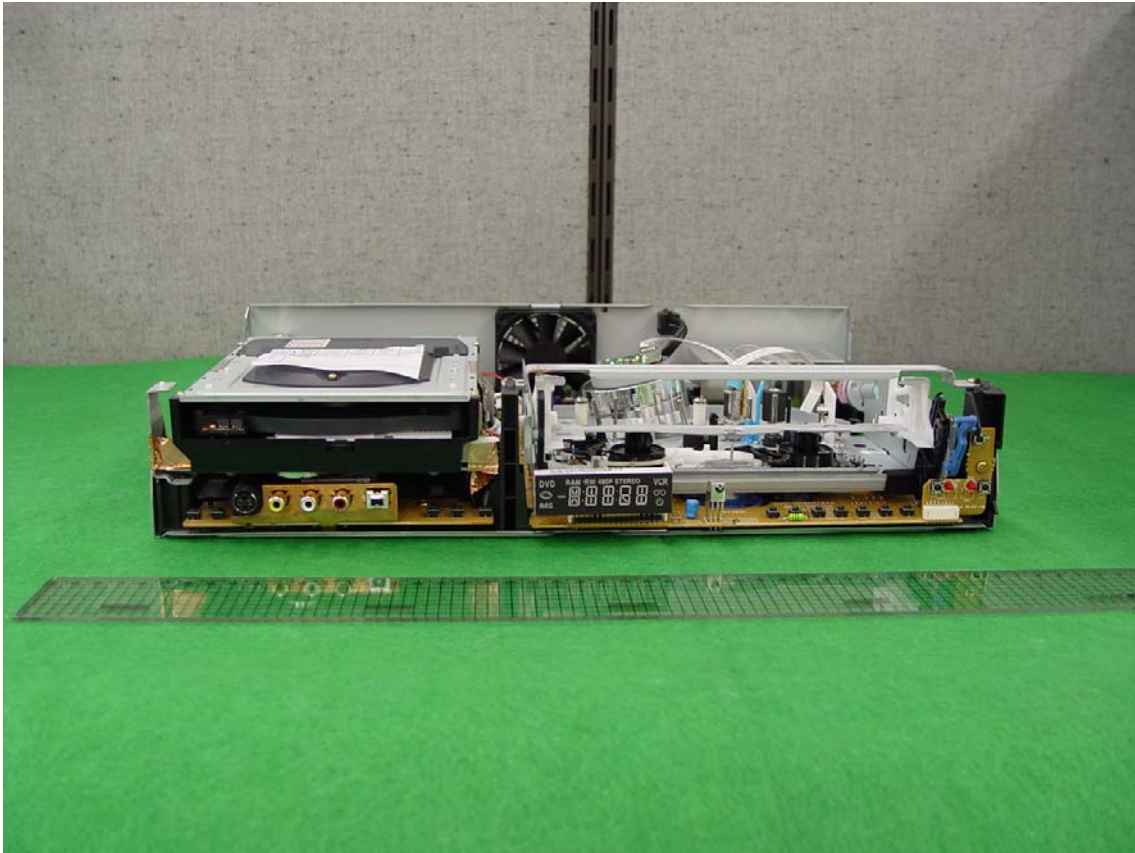


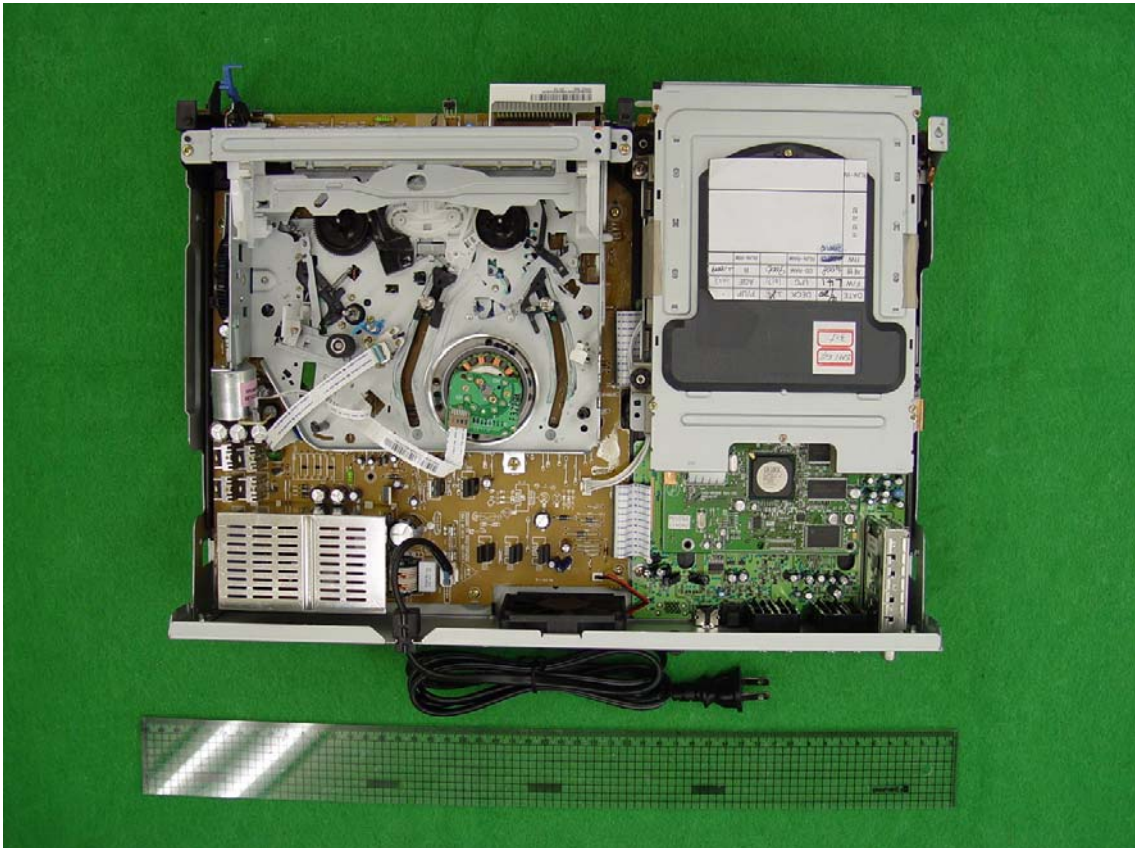
# Photograph of DVD-VR300

- FCC ID : A3LDVDVR300

Front View – Front/Top cover open



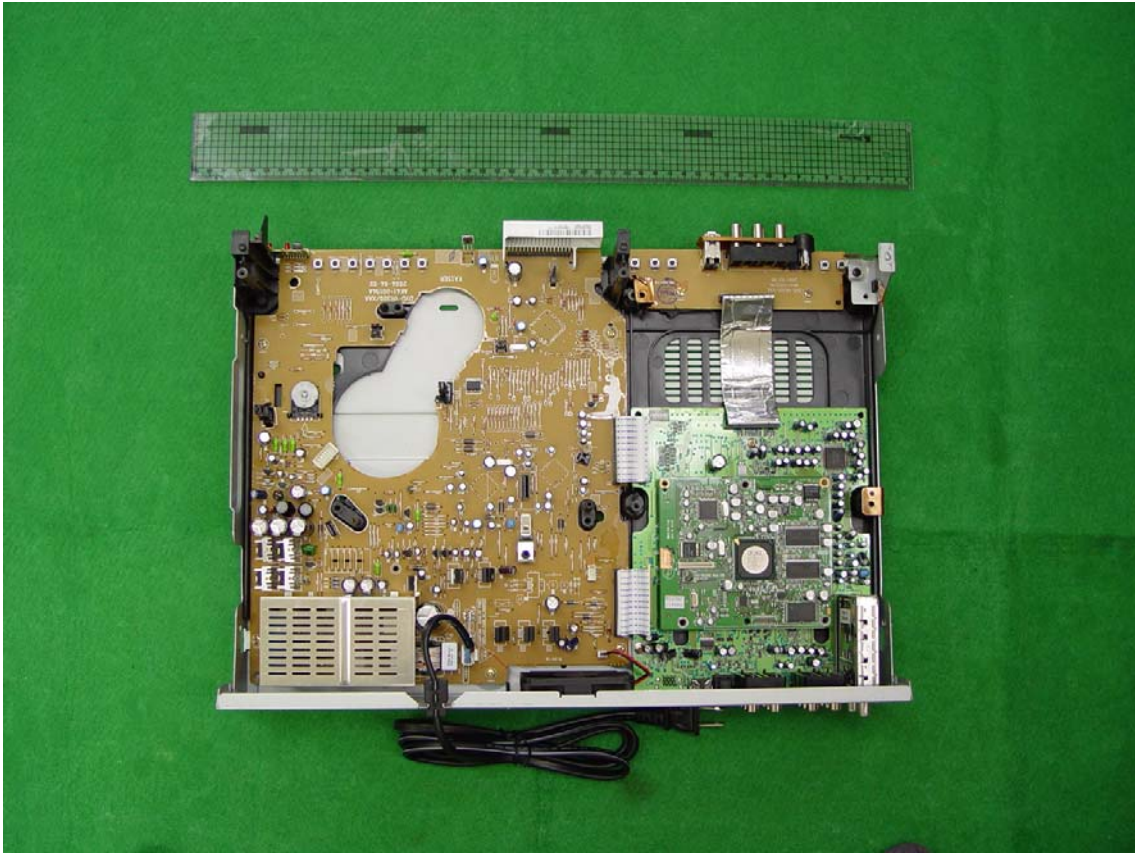
Top View – Front/Top cover open



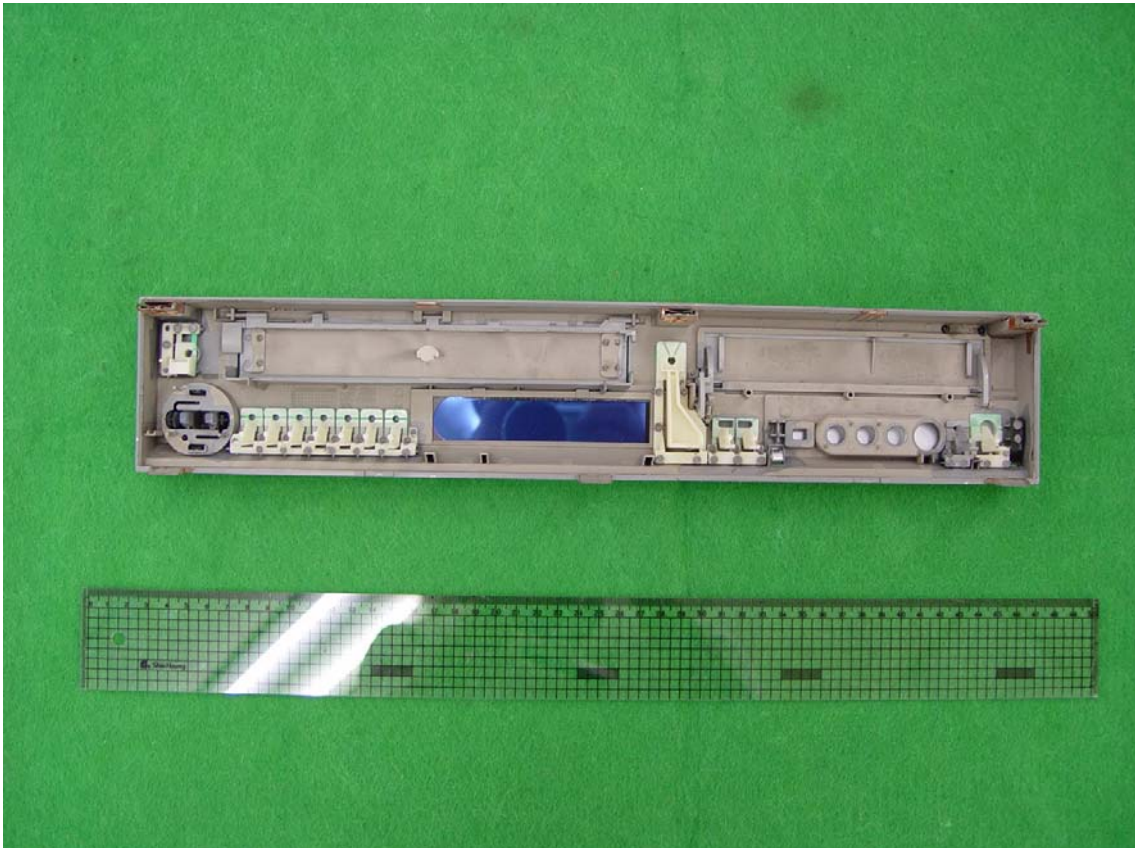
# Photograph of DVD-VR300

- FCC ID : A3LDVDVR300

Front View – Front/Top cover open & Deck remove



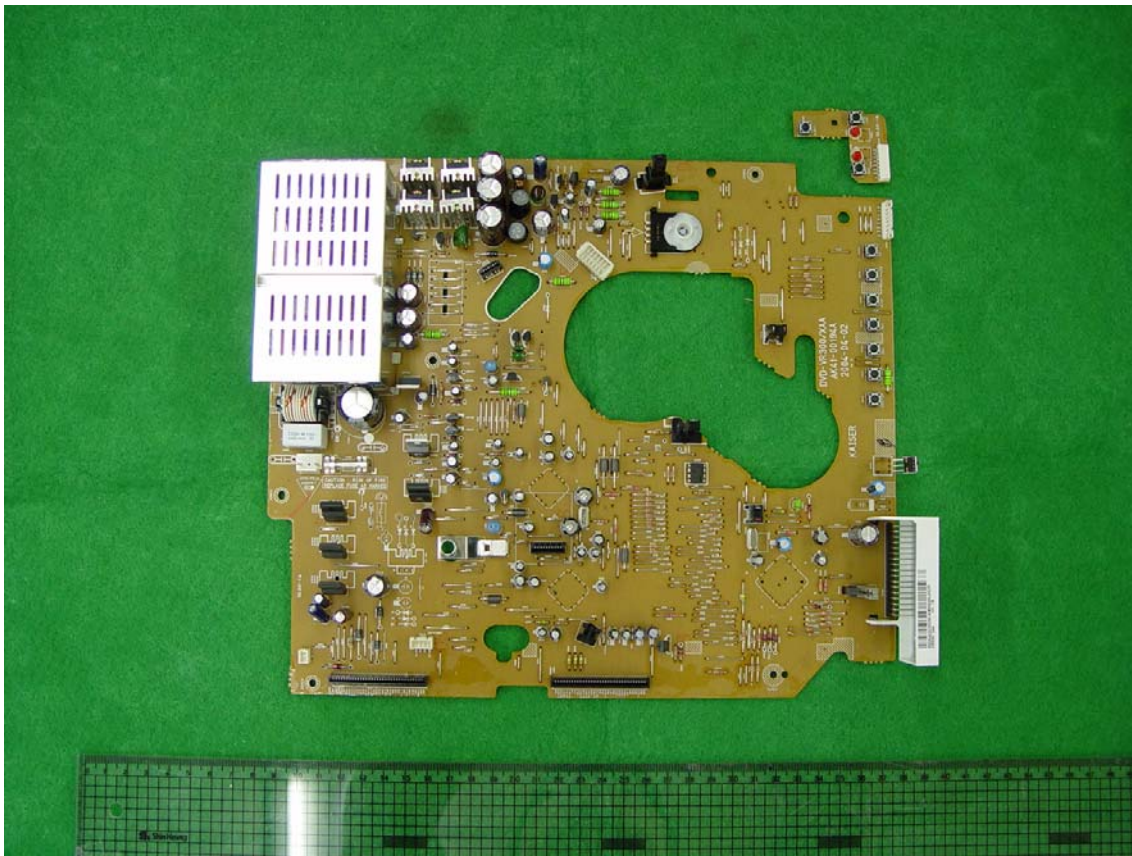
Front panel View



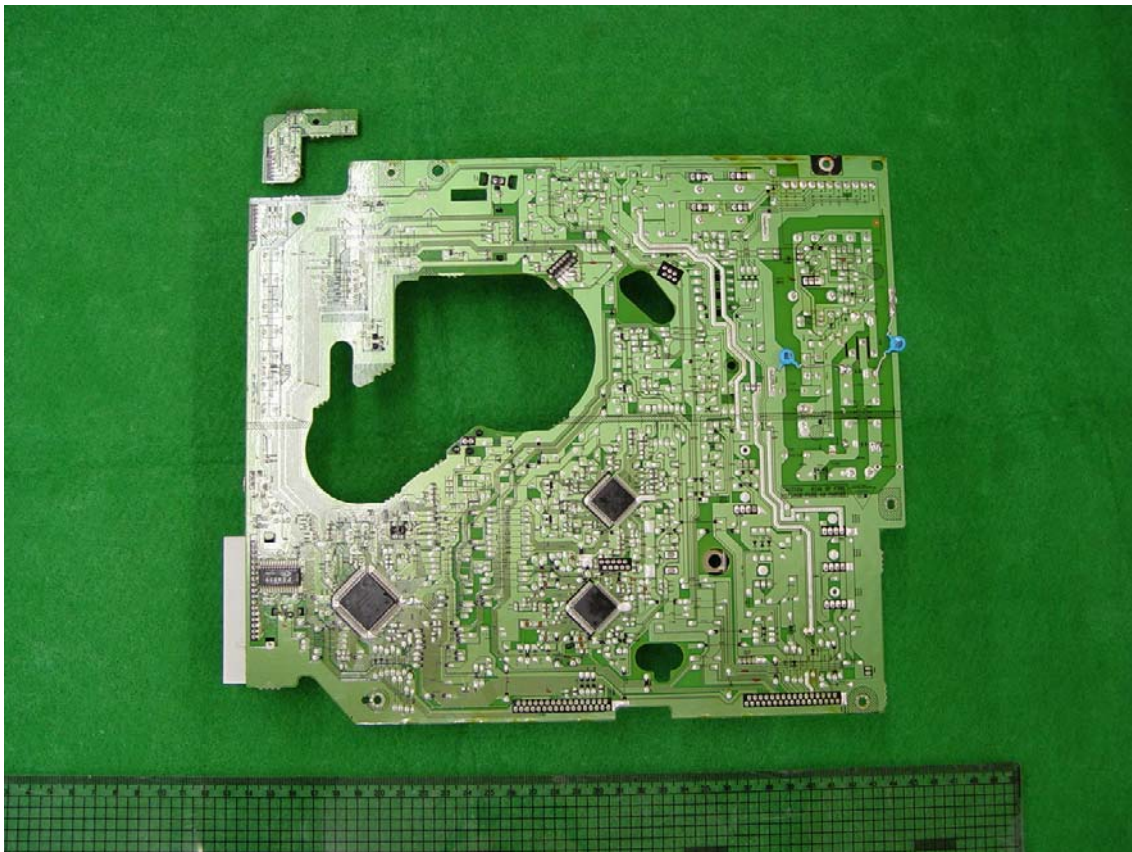
# Photograph of DVD-VR300

- FCC ID : A3LDVDVR300

Top of Main PCB View



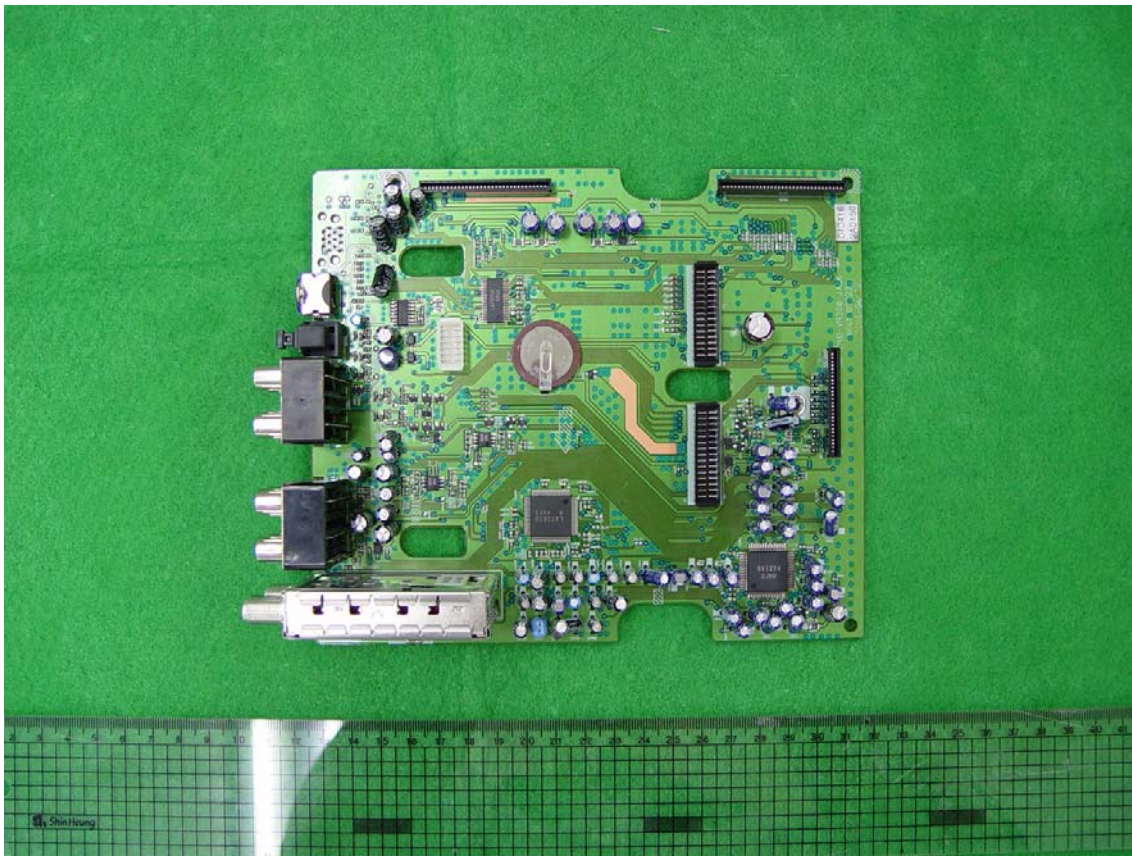
Bottom of Main PCB View



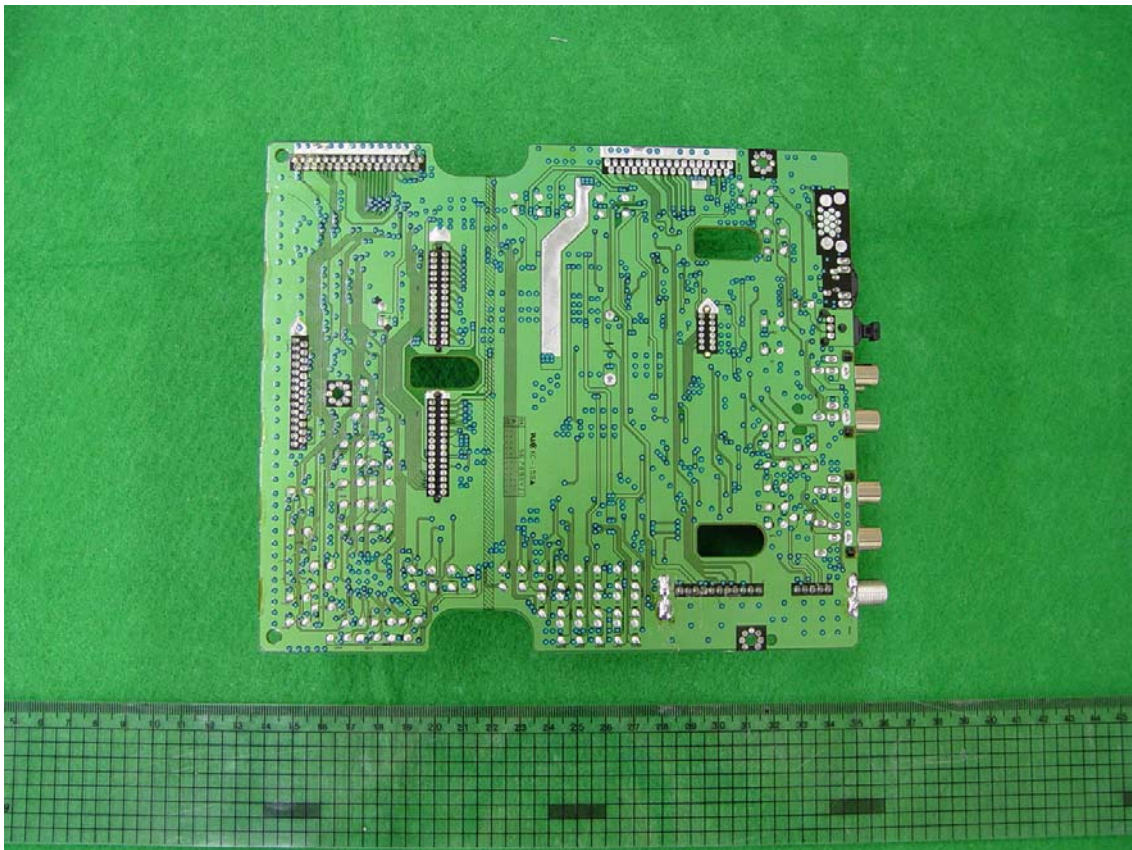
# Photograph of DVD-VR300

- FCC ID : A3LDVDVR300

Top of DVD PCB View



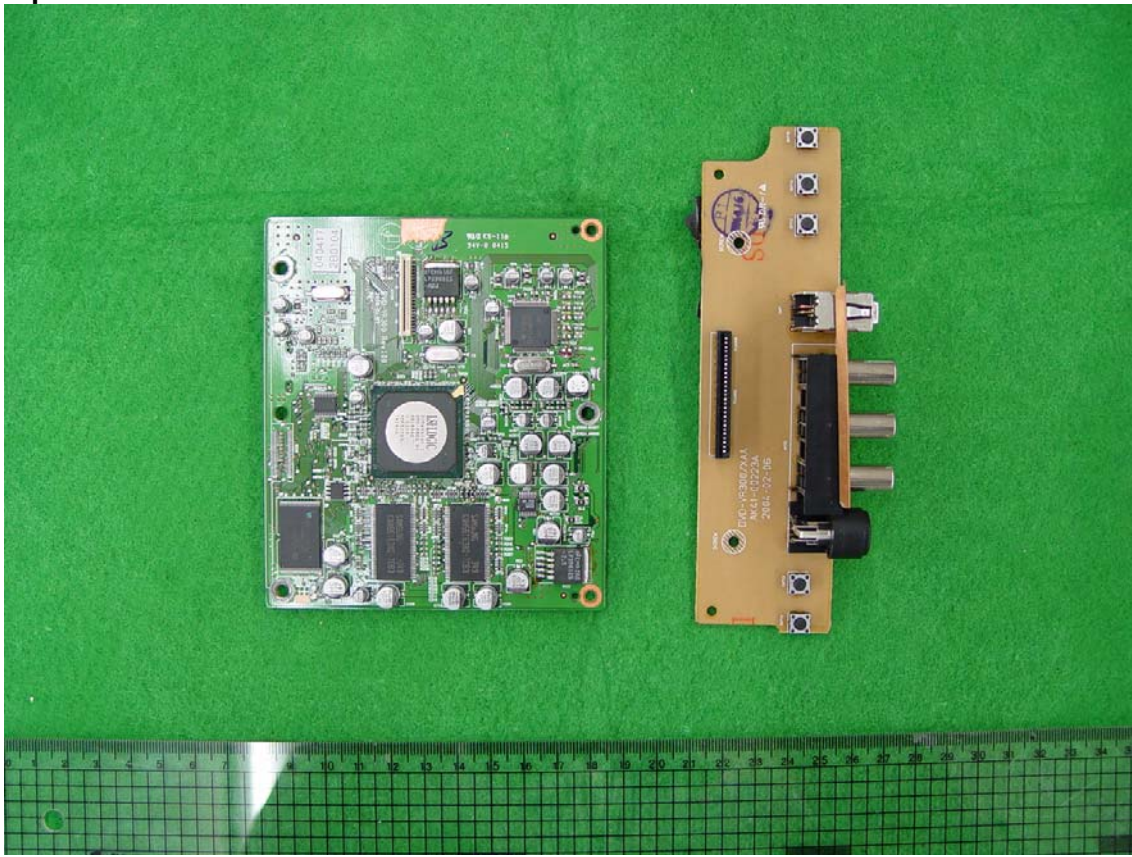
Bottom of Main PCB View



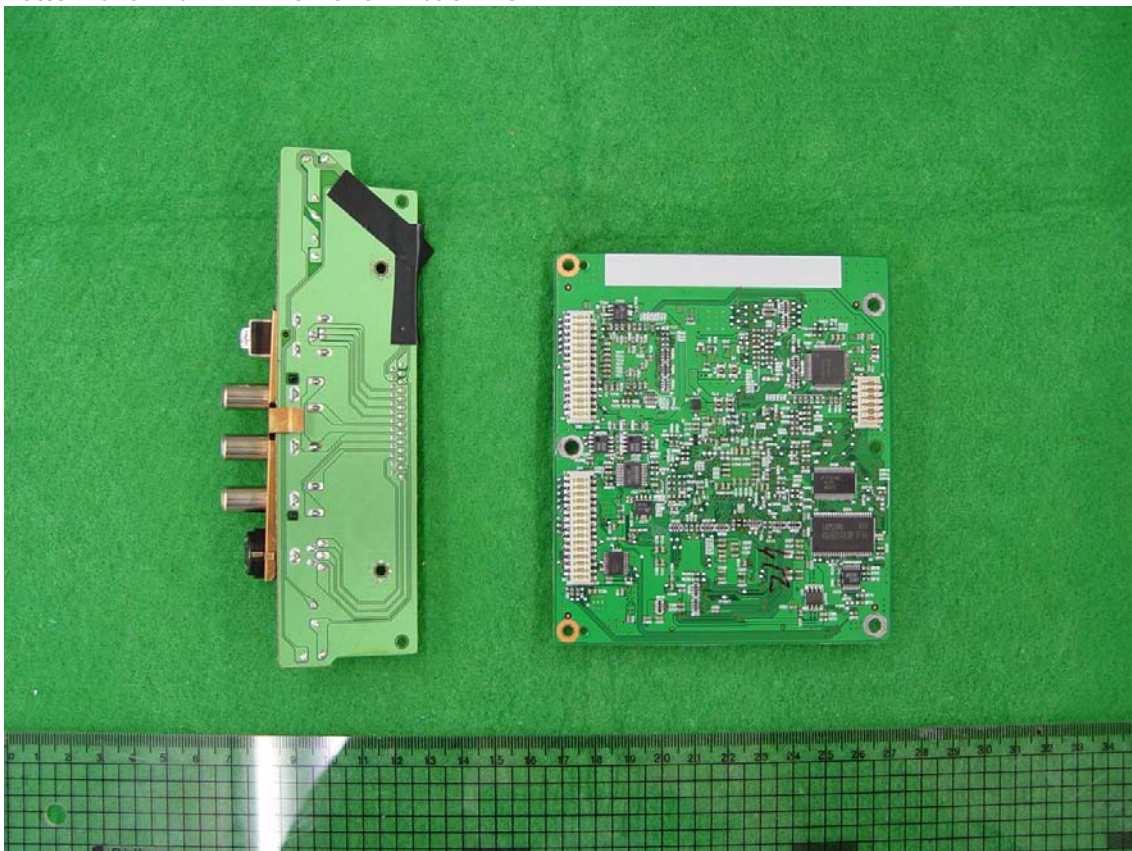
# Photograph of DVD-VR300

- FCC ID : A3LDVDVR300

Top of DVD2 PCB and AV Jack PCB



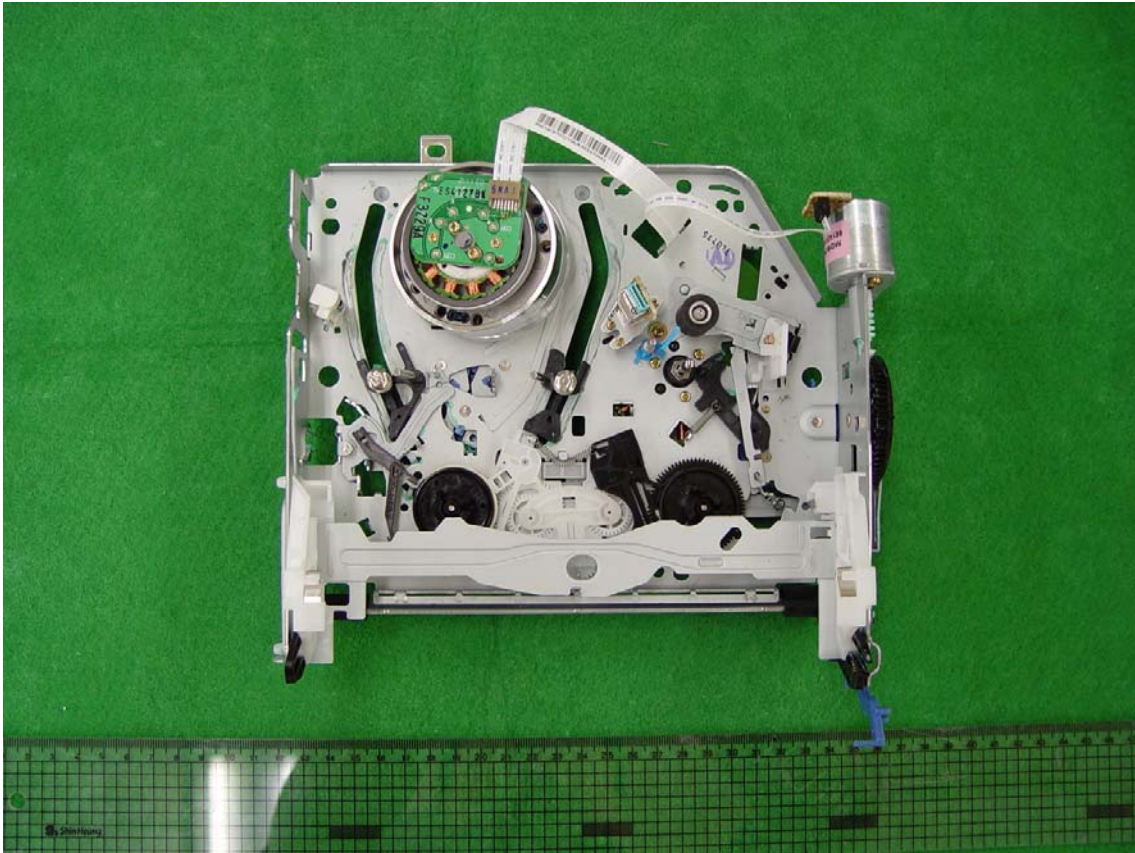
Bottom of SMPS DVD2 PCB and AV Jack PCB



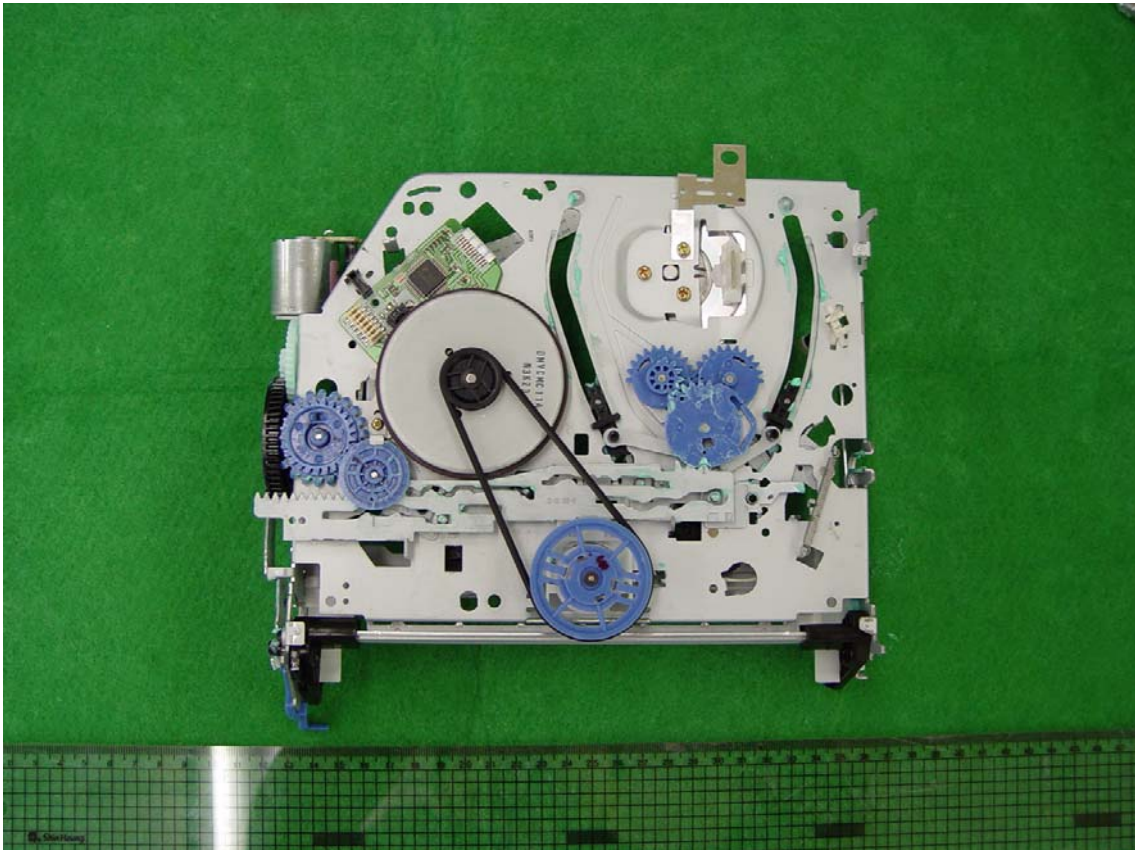
# Photograph of DVD-VR300

- FCC ID : A3LDVDVR300

Top of VHS Deck Mechanism View



Bottom of VHS Deck Mechanism View





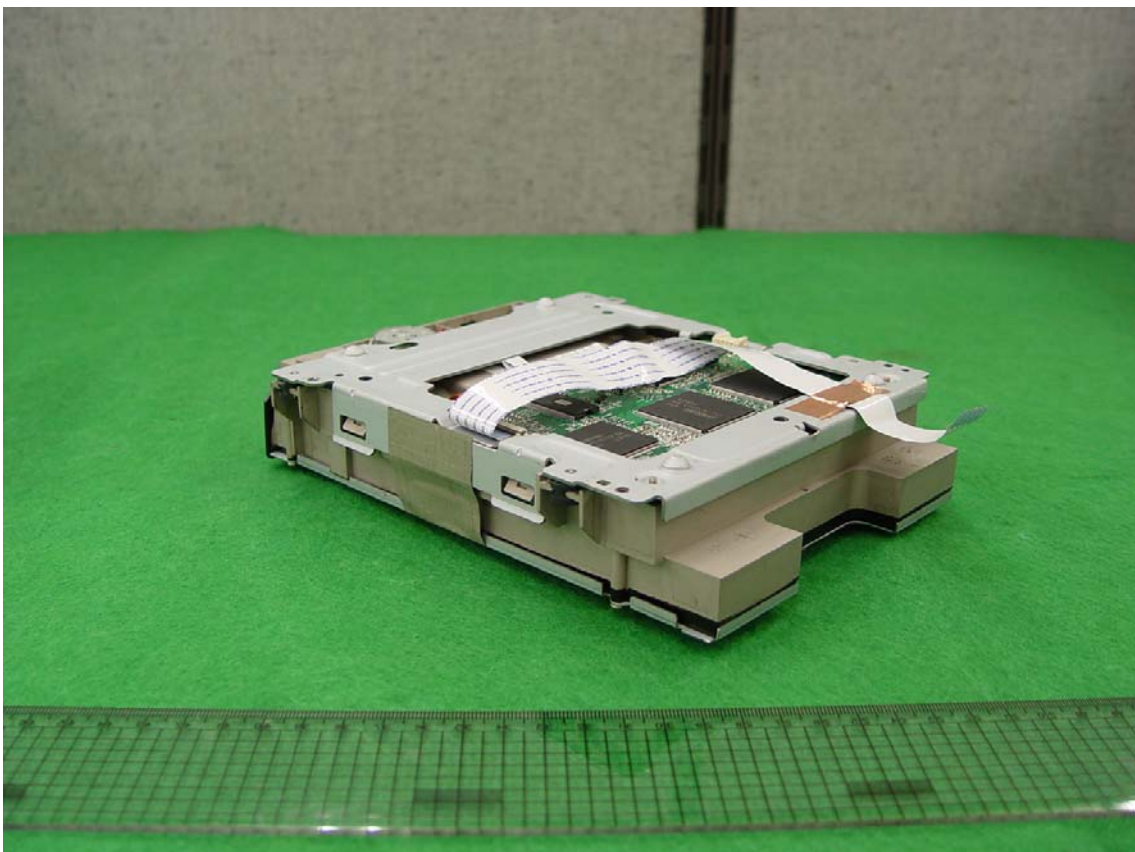
# Photograph of DVD-VR300

- FCC ID : A3LDVDVR300

**Top of DVD Deck Mechanism View**



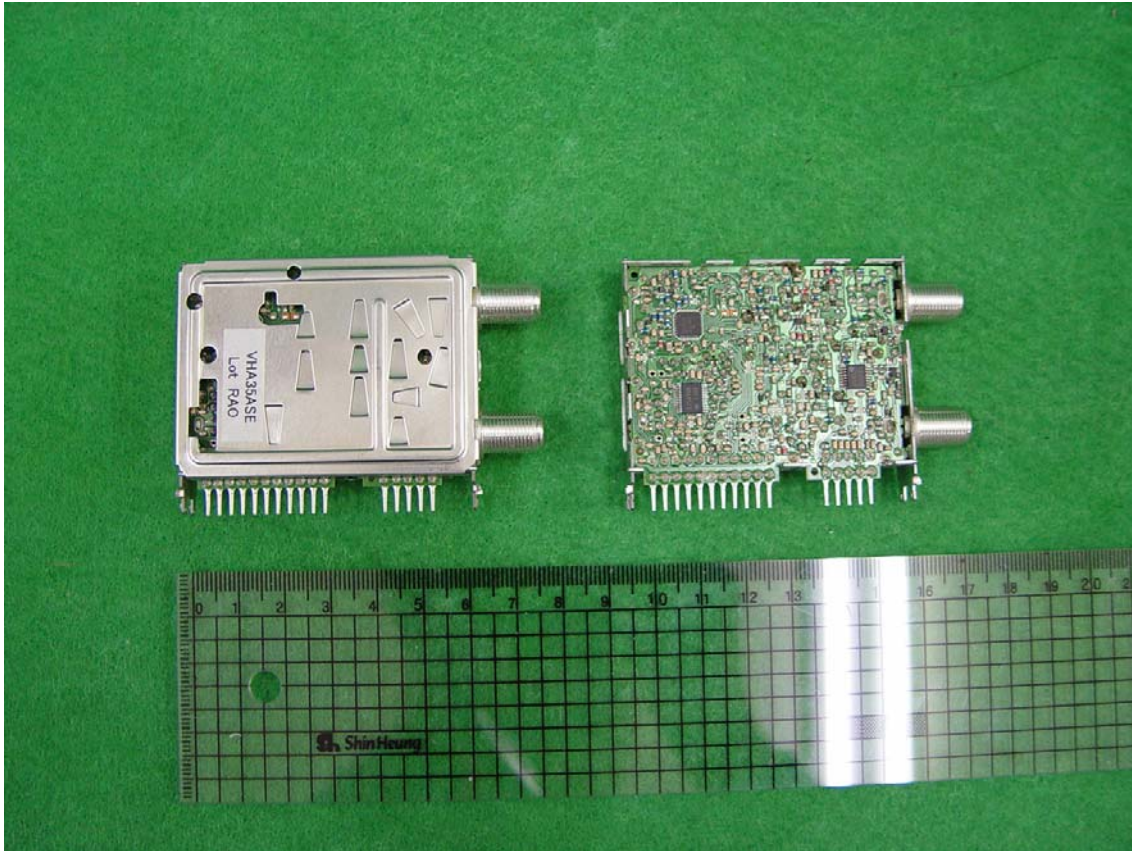
**Bottom of DVD Deck Mechanism View**



# Photograph of TM-BLOCK

TM-BLOCK TYPE: VHA35ASE

Top View



Bottom View

