

EMC TEST REPORT


Project No.	LBE093756	Issue No.	2
Applicant	Name of organization	Samsung Electronics Co., Ltd.	
	Address	416 Maetan 3-Dong, Yeongtong-Gu, Suwon-Si, Gyeonggi-Do 443-742 Korea	
	Date of application	November 30, 2009	
EUT	Type of device	Class B digital devices, peripherals	
	Equipment authorization	<input type="checkbox"/> Declaration of Conformity <input checked="" type="checkbox"/> Certification <input type="checkbox"/> Verification	
	FCC ID	A3LCLP325	
	Kind of product	COLOR LBP	
	Model No.	CLP-325	
		Variant Model No.	CLP-320
	Manufacturer	Samsung Electronics Co., Ltd. 259, Gongdan-Dong, Gumi-City, Gyeongsangbuk-Do, Korea 730-030 Samsung Electronics (Shandong) Digital Printing Co., Ltd. 264209, Samsung Road, Weihai Hi-Tech. IDZ, Shandong Province, P.R.China	
Applied Standards	FCC Part 15, Subpart B / ANSI C63.4-2003		
Test Period	November 30, 2009 ~ December 9, 2009		
Issue date	December 17, 2009		
Test result : Complied The equipment under test has found to be compliant with the applied standards. (Refer to the attached test result for more detail.)			
Tested by : Young Hun Cheong 		Reviewed by : No Cheon Park 	
This report is the test result about the sphere accredited by KOLAS which signed the Mutual Recognition Arrangement of International Laboratory Accreditation Cooperation. The test results in this report only apply to the tested sample. This report must not be reproduced, except in full, without written permission from SEC EMC Laboratory.			
			
416 Maetan 3-Dong, Yeongtong-Gu, Suwon-Si, Gyeonggi-Do, 443-742 Korea Tel: 82 31 277 7752, Fax: 82 31 277 7753			

Table of contents

1. Summary of test results

1.1 Emission

2. General Information

2.1 Test facility

2.2 Accreditation and listing

3. Test configuration

3.1 Test Peripherals

3.2 EUT operating mode

3.3 Details of Sampling

3.4 Used cable description

3.5 EUT Description

3.6 Clock Frequencies

3.7 Test configuration and condition

3.8 Measurement uncertainty

4. Result of individual tests

4.1 Conducted disturbance

4.2 Radiated disturbance

Appendix – EUT photography



1. Summary of test results

1.1 Emission

The EUT has been tested according to the following specifications:

Applied	Test type	Applied standard	Result	Remarks
<input checked="" type="checkbox"/>	Conducted Disturbance (Mains Port)	FCC Part 15 Subpart B	Complied	Meets Class B Limit
<input checked="" type="checkbox"/>	Radiated Disturbance		Complied	Meets Class B Limit

2. General Information

2.1 Test facility

The SEC EMC Laboratory is located on Samsung Electronics Co., Ltd. at 416 Maetan 3-Dong, Yeongtong-Gu, Suwon-Si, Gyeonggi-Do, South Korea.

All testing are performed in Semi-anechoic chambers conforming to the site attenuation Characteristics defined by ANSI C63.4, CISPR 22, 16-1 and 16-2. and Shielded rooms.

The SEC EMC Laboratory is operated as testing laboratory in accordance with the requirements of ISO/IEC 17025:2005.



Project No. : LBE093756



COLOR LBP : CLP-325

2.2 Accreditation and listing

Laboratory Qualifications		Remarks
	KOLAS(Korea Laboratory Accreditation Scheme)	Accredited : 124
	UKAS(United Kingdom Accreditation Service)	Accredited : 4290
	Korea Communications Commission Radio Research Agency	Accredited : KR0004
	FCC(Federal Communications Commission)	Accredited : KR0004
	National Voluntary Laboratory Accreditation Program	Lab Code: 200623-0
	Norges Elektriske Materiellkontroll	Accredited : ELA 195
	VCCI (Voluntary Control Council for Interference by Information Technology Equipment)	C-2421,R-2224
	China Quality Certification Center	5-053, 5-054
	TUV Rhineland	H9354285
	GOST(GOSTSTANDART)	ROSTEST
	Elektrotechnicky Zkusebni Ustav	Reg. No.: 001
	IC(Industry Canada)	Assigned Code: 5871



3. Test Setup configuration

3.1 Test Peripherals

The cables used for these peripherals are either permanently attached by the peripheral manufacturer or coupled with an assigned cable as defined below.

The following is a listing of the EUT and peripherals utilized during the performance of EMC test:

Description	Model No.	Serial No.	Manufacturer	FCC ID and/or DoC
COLOR LBP	CLP-325	-	Samsung	A3LCLP325
Note book Computer	PP18L	27182225373	Dell	DoC
Adapter	LA65NS1-00	CN-0YD637-71615-83C-0A0A	Dongguang Lite Power	-
USB Mouse	M-UAE96	LZK61923406	LOGITECH INC.	DoC
Headset	COV140	-	COSY	DoC

3.2 EUT operating mode

To achieve compliance applied standard specification, the following mode(s) were made during compliance testing:

Operating Mode 1	Standby Mode
Operating Mode 2	USB Printing Mode

3.3 Details of Sampling

Customer selected, single unit.

3.4 Used cable description

The EUT is configured, installed, arranged and operated in a manner consistent with typical applications. Interface cables/loads/devices are connected to at least one of each type of interface port of the EUT, and where practical, each cable shall be terminated in a device typical of actual usage. The type(s) of interconnecting cables to be used and the interface port (of the EUT) to which these were connected;

Connected cable	Length [m]	Shielded [Y/N]	Note
Power	1.8	No	For EUT
USB	1.8	Yes	EUT to Notebook PC
Power	1.8	No	For Note PC
USB	0.4	Yes	EUT to USB Mouse

SAMSUNG ELECTRONICS

3.5 EUT Description

The following features describe EUT represented by this report:

Item	Specification and Description
Processor	JUPITER5(360Mhz)
Standard System memory	32MB DDR2
Resolution	Up to 2400X600dpi Class (Default 1200x600 dpi) Optical: 600x600 Dpi
Copy Quality mode	none
Paper Handling	Paper Tray(standard) 150 Sheets
Power Rating	110~127 VAC, 4.5A, 50/60 Hz
Power Consumption	Printing simplex : 350Watts
Printer Language	SPL-C
Interfaces	USB2.0
OS compatibility	Microsoft Windows: 2000/2003/XP(Include 64bit),Vista MacOS:10.3,10.4 Linux(Printer only)OS:Red Hat 8~9, Fedora Core 1~4 Mandrake 9.2~10.1 SuSE 8.2~9.2
Modes of Operation	USB Printing
Intended Class for Emissions	Class B

3.6 Clock Frequencies

Kind of Clocks	Frequency[MHz]	Kind of Clocks	Frequency[MHz]
Main Source	12	Video	12
CPU Internal	360	DDR RAM	166
USB Device	12		

3.7 Test configuration and condition

The system was configured for testing in typical fashion use. Cables were attached to each of the available I/O Ports. Where applicable, peripherals were attached to the I/O cables. All operating mode(s) selected were tested to show compliance with relevant standard. Power source for the EUT operating was supplied by CVCF made by the Voltech Corp.

- Test Voltage : AC 120 V, 60 Hz

3.8 Measurement uncertainty

Where relevant, the following measurement uncertainty levels have been estimated for tests performed on the apparatus: (According to CISPR 16-4 and UKAS Lab 34.)

3.8.1 Emission

Test type		Measurement uncertainty (C.L. 95 %, k = 2)
Conducted disturbance	Main terminal	3.50 dB
	Horizontal	5.04 dB
Radiated Disturbance	Vertical	5.03 dB

4. Results of individual test

4.1 Conducted disturbance

Both conducted lines are measured in Quasi-Peak and Average mode, including the worst-case data points for each tested configuration. The EUT measured in accordance with the methods described in standards.

Limits for conducted disturbance at the mains ports of class A ITE

Frequency range Limits MHz	Resolution Bandwidth	Limits dB(μV)	
		Quasi-peak	Average
0,15 to 0,50	9 kHz	79	66
0,50 to 30	9 kHz	73	60

NOTE The lower limit shall apply at the transition frequency

Limits for conducted disturbance at the mains ports of class B ITE

Frequency range Limits MHz	Resolution Bandwidth	Limits dB(μV)	
		Quasi-peak	Average
0,15 to 0,50	9 kHz	66 to 56	56 to 46
0,50 to 5	9 kHz	56	46
5 to 30	9 kHz	60	50

NOTE 1 The lower limit shall apply at the transition frequency
 NOTE 2 The limit decreases linearly with the logarithm of the frequency in the range 0,15 MHz to 0,50 MHz.



4.1.1 Test instrumentation

Test instrumentation	Manufacturer	Model name	Serial or Firmware (No./Ver.)	Calibration	
				Date	Interval (Month)
Test Receiver	R&S	ESCI	100370	2009-05-07	12
Two-Line V-Network	R&S	ENV216	100456	2009-09-18	12
Two-Line V-Network	R&S	ESH3-Z5	100261	2009-04-03	12
Test software	EMC32	R&S	Ver 4.40.0	N/A	N/A

4.1.2 Temperature and humidity condition

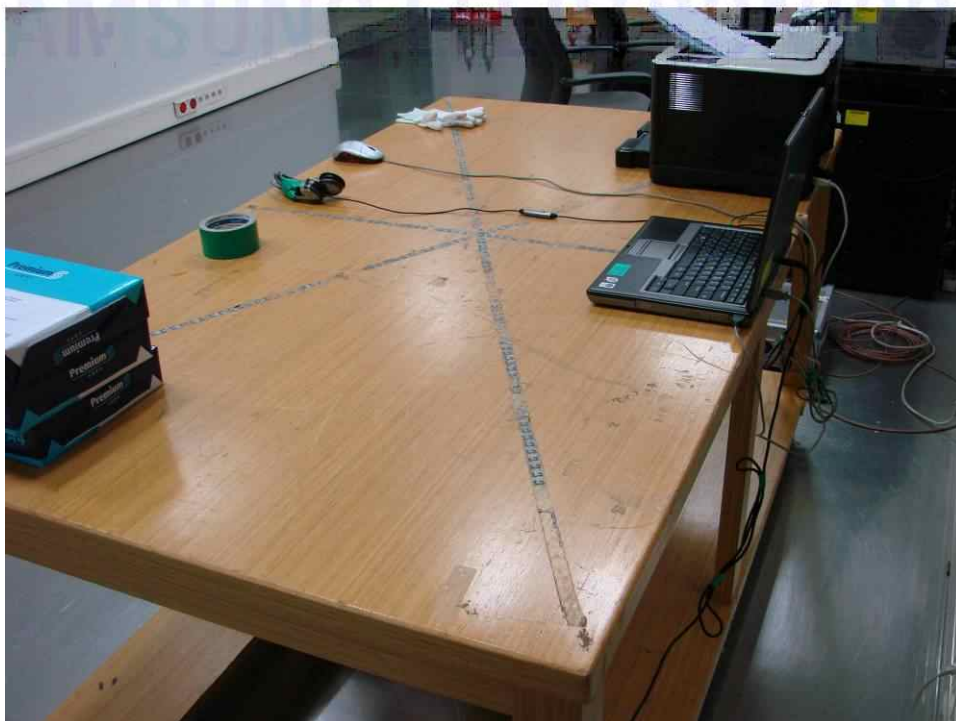
Test date	December 9, 2009	Test engineer	Young Hun Cheong
Test place	Shielded Room #1		

SAMSUNG ELECTRONICS

4.1.3 Photograph of Test Setup



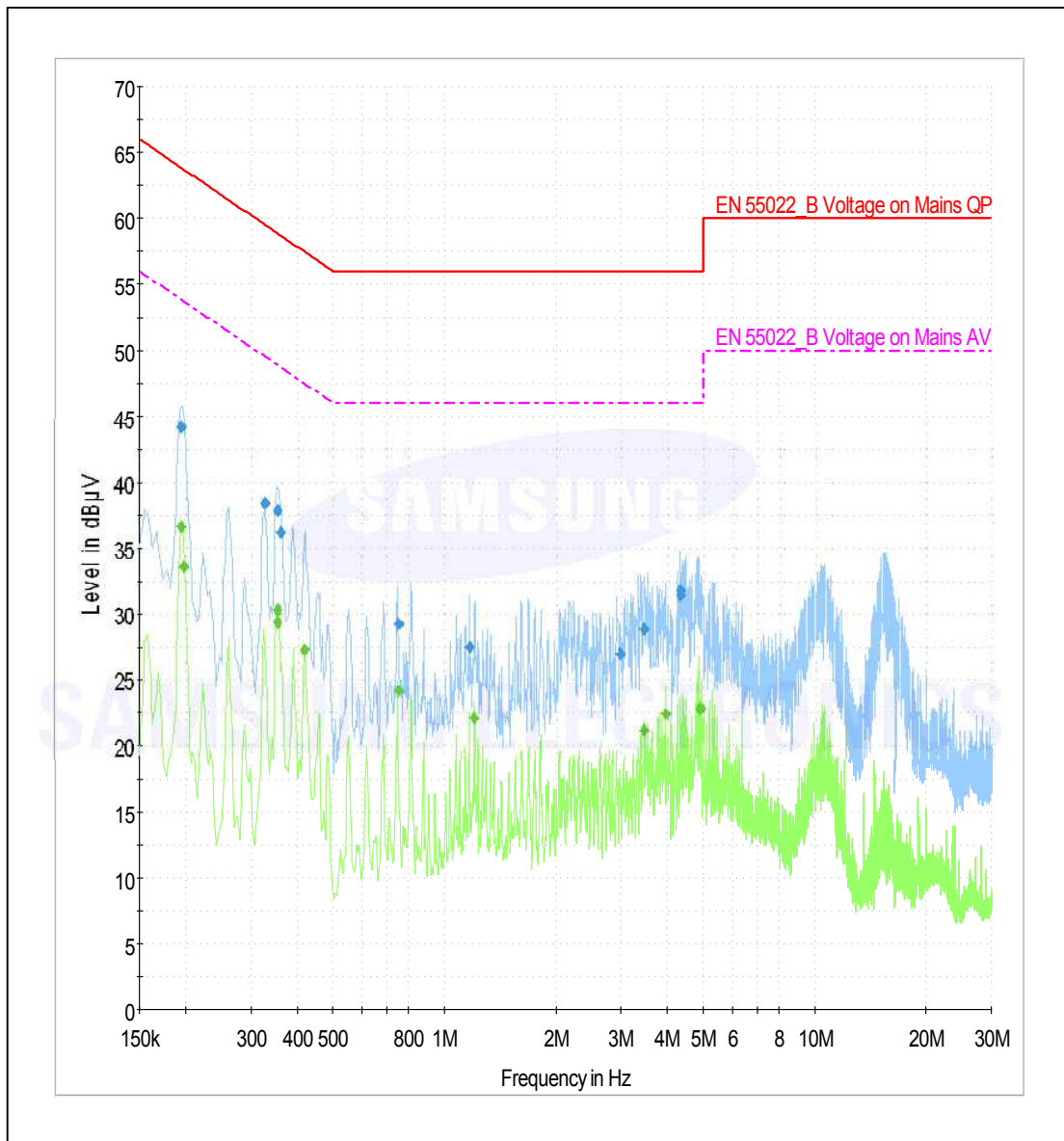
Front



Rear

4.1.4 Test results (mains port)

- Operating Mode : Standby Mode



Note) Two graphs measured for both Live(L1) and Neutral(N) of the LISN are combined into one graph.

Test Results (Quasi-Peak and Average)

Quasi-peak final measurement results table

Frequency [MHz]	Quasi-Peak [dBuV]	Bandwidth [kHz]	Line	Factor [dB]	Margin [dB]	Limit [dBuV]
0.194	44.2	9.0	L1	9.3	19.7	63.9
0.328	38.5	9.0	L1	9.4	21.0	59.5
0.353	37.9	9.0	L1	9.4	21.0	58.9
0.361	36.3	9.0	N	9.4	22.4	58.7
0.748	29.3	9.0	N	9.5	26.7	56.0
1.165	27.6	9.0	L1	9.6	28.4	56.0
2.982	27.0	9.0	L1	9.6	29.0	56.0
3.448	28.9	9.0	L1	9.6	27.1	56.0
4.323	31.7	9.0	L1	9.6	24.3	56.0
4.328	31.5	9.0	L1	9.6	24.5	56.0

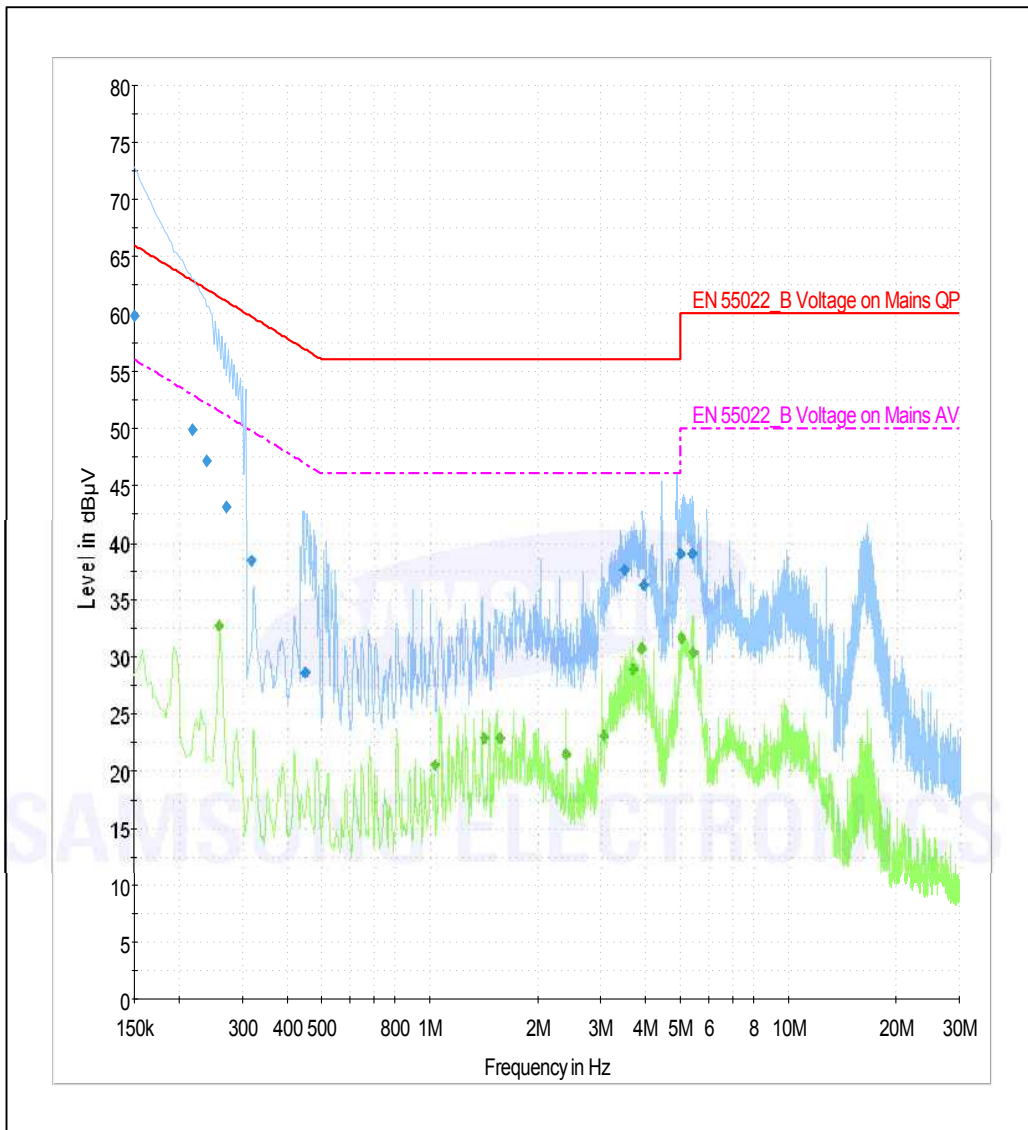
Average final measurement results table

Frequency [MHz]	Average [dBuV]	Bandwidth [kHz]	Line	Factor [dB]	Margin [dB]	Limit [dBuV]
0.194	36.6	9.0	N	9.3	17.3	53.9
0.197	33.6	9.0	L1	9.3	20.1	53.7
0.353	30.3	9.0	N	9.4	18.6	48.9
0.354	29.4	9.0	N	9.4	19.5	48.9
0.420	27.3	9.0	N	9.4	20.2	47.5
0.747	24.2	9.0	N	9.5	21.8	46.0
1.203	22.1	9.0	N	9.6	23.9	46.0
3.451	21.2	9.0	N	9.6	24.8	46.0
3.935	22.4	9.0	N	9.6	23.6	46.0
4.879	22.8	9.0	N	9.6	23.2	46.0

Note) Level (Quasi-Peak and/or Average) = Meter Reading (Quasi-Peak and/or Average) + Factor (LISN Insertion Loss + Cable Loss)

Margin = Limit – Level (Quasi-Peak and/or Average)

- Operating Mode : USB Printing Mode



Note) Two graphs measured for both Live(L1) and Neutral(N) of the LISN are combined into one graph.

Test Results (Quasi-Peak and Average)

Quasi-peak final measurement results table

Frequency [MHz]	Quasi-Peak [dBuV]	Bandwidth [kHz]	Line	Factor [dB]	Margin [dB]	Limit [dBuV]
0.150	59.8	9.0	N	9.4	6.2	66.0
0.218	49.8	9.0	N	9.4	13.1	62.9
0.238	47.2	9.0	N	9.4	15.0	62.2
0.271	43.1	9.0	N	9.4	18.0	61.1
0.319	38.5	9.0	N	9.4	21.2	59.7
0.448	28.6	9.0	L1	9.4	28.3	56.9
3.476	37.6	9.0	N	9.6	18.4	56.0
3.938	36.4	9.0	L1	9.6	19.6	56.0
4.964	39.1	9.0	L1	9.6	16.9	56.0
5.379	39.1	9.0	N	9.6	20.9	60.0

Average final measurement results table

Frequency [MHz]	Average [dBuV]	Bandwidth [kHz]	Line	Factor [dB]	Margin [dB]	Limit [dBuV]
0.259	32.7	9.0	N	9.4	18.8	51.5
1.032	20.6	9.0	L1	9.6	25.4	46.0
1.412	22.9	9.0	N	9.6	23.1	46.0
1.567	22.9	9.0	N	9.6	23.1	46.0
2.396	21.5	9.0	L1	9.6	24.5	46.0
3.044	23.1	9.0	L1	9.6	22.9	46.0
3.658	29.0	9.0	N	9.6	17.0	46.0
3.891	30.7	9.0	N	9.6	15.3	46.0
4.988	31.7	9.0	N	9.6	14.3	46.0
5.406	30.4	9.0	L1	9.6	19.6	50.0

Note) Level (Quasi-Peak and/or Average) = Meter Reading (Quasi-Peak and/or Average) + Factor (LISN Insertion Loss + Cable Loss)

Margin = Limit – Level (Quasi-Peak and/or Average)



4.2 Radiated disturbance

Of those disturbances above ($L - 20\text{dB}$), where L is the limit level in logarithmic units, record at least the disturbance levels and the frequencies of the six highest disturbances.

The following data lists the significant emission frequencies, measured levels, correction factors (for antenna and cables), orientation of table, polarization and height of antenna, the corrected reading, the limit, and the amount of margin. All measurements were taken utilizing quasi-peak detection unless stated otherwise.

Measurements were performed at an antenna to EUT distance of 10 meters and elevated between 1 and 4 meters. Both vertical and horizontal antenna polarizations were measured.

Limits for radiated disturbance of ITE at a measuring distance of 10 m

Frequency range Limits MHz	Resolution Bandwidth	Quasi-peak Limits dB dB($\mu\text{V}/\text{m}$)	
		Class A	Class B
30 to 230	120 kHz	40	30
230 to 1000	120 kHz	47	37
NOTE 1 The lower limit shall apply at the transition frequency			
NOTE 2 Additional provisions may be required for cases where interference occurs.			

SAMSUNG ELECTRONICS

Peak measurements were made over the changeable frequency range 1GHz to 40GHz or 5th in accordance with internal maximum operating frequency at a measurement distance of 3 m for the following antenna and turntable arrangements:

Antenna Height (Cm)	Antenna Polarisation	Turntable position (degrees)
100	Horizontal, Vertical	Continuous

Limits for above 1GHz radiated disturbance of ITE at a measuring distance of 3 m

Class	Limits - dB(µV/m)	
	Peak	Average
A	80	60
B	74	54
Average limit $500 \cdot 20 \log 500 = 53.979 \text{ dB} \approx 54 \text{ dB}$		

Antenna height was adjusted to 100 cm to be parallel from EUT to antenna centre. Measurements within 20 dB of the limit were then maximized by adjusting turntable position. Final measurements were made using a average detector.

Results checked manually; and points close to the limit line were re-measured.



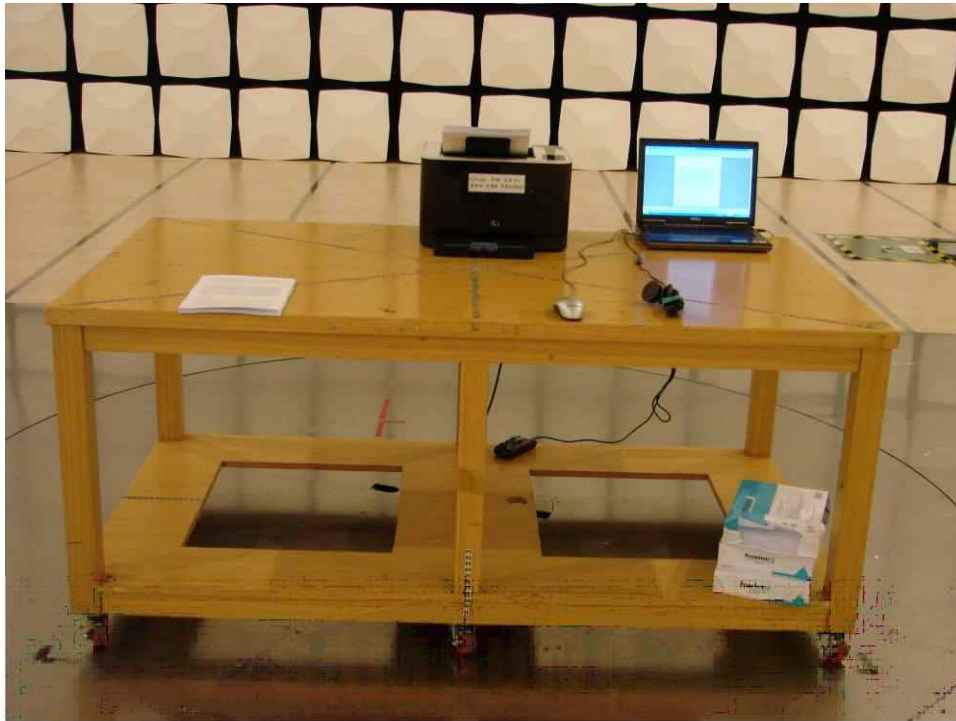
4.2.1 Test instrumentation

Test instrumentation	Manufacturer	Model name	Serial or Firmware (No./Ver.)	Calibration	
				Date	Interval (Month)
Bilog Antenna	Schaffner	CBL6112D	22602	2008-04-15	24
Bilog Antenna	Schaffner	CBL6112D	22604	2008-04-15	24
Horn Antenna	R&S	HF907	100016	2009-04-27	24
Test Receiver	R&S	ESIB-26	100287	2009-08-27	12
Test Receiver	R&S	ESIB-26	100147	2009-06-30	12
Amplifier	Sonoma	310N	185861	2009-01-28	12
Amplifier	Sonoma	310N	251676	2009-01-28	12
Amplifier	R&S	SCU_F018_G35_AS F42_CNN(F)	10001	2009-01-19	12
Antenna Mast	INN CO	MA4000	-	N/A	N/A
Antenna Mast	INN CO	MA4000	-	N/A	N/A
Mast Controller	INN CO	CO2000	-	N/A	N/A
Test software	TOYO	EP5/RE	VER 3.1.20	N/A	N/A
RF Selector	TOYO	NS4900	-	N/A	N/A

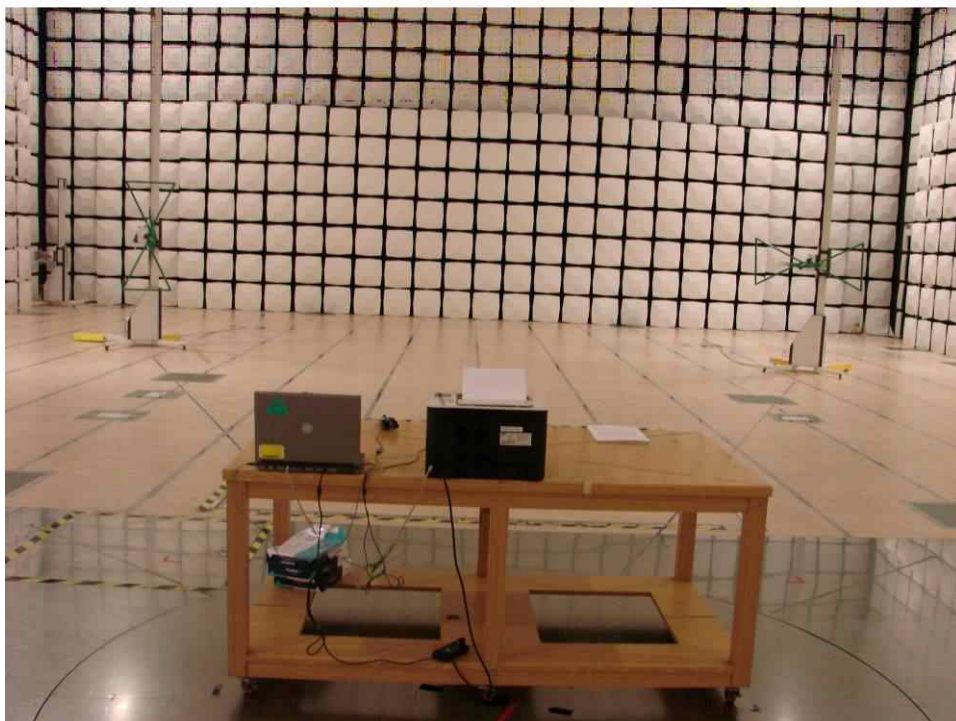
4.2.2 Temperature and humidity condition

Test date	November 30, 2009 ~ December 2, 2009	Test engineer	Young Hun Cheong
Test place	10 m Semi-Anechoic Chamber		

4.2.3 Photograph of Test Setup



Front



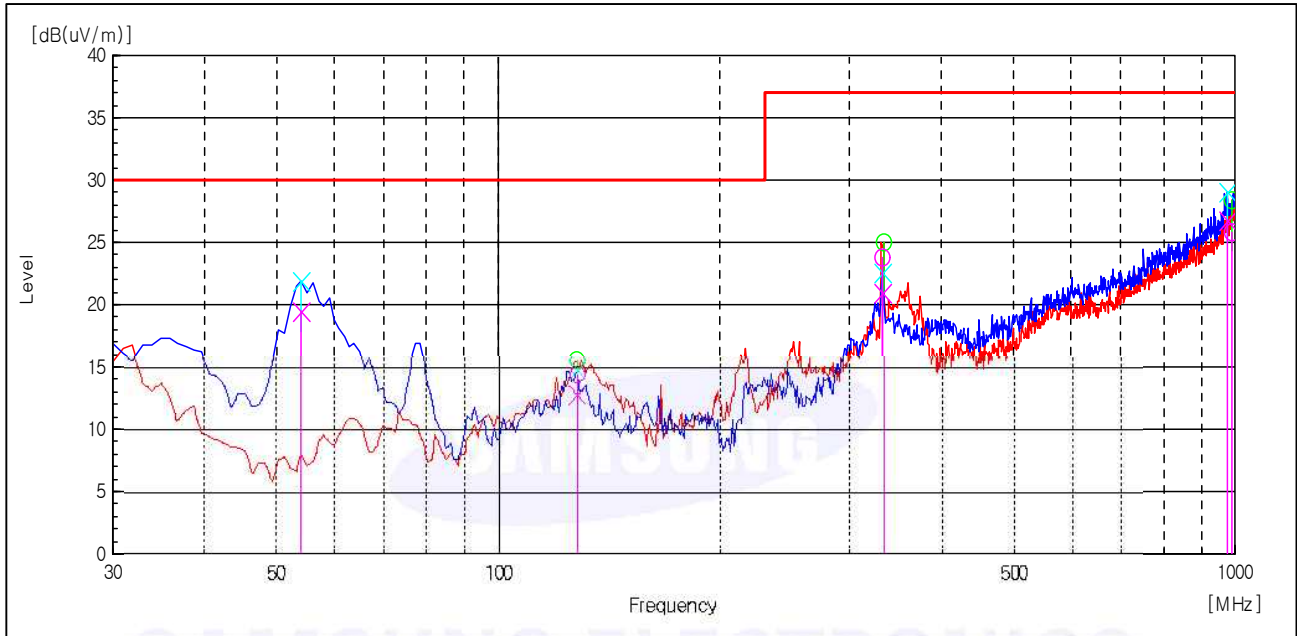
Rear

4.2.4 Test results

4.2.4.1 Below 1GHz results

- Operating Mode : Standby Mode

Test Graph and Results



Frequency [MHz]	(P)	Reading QP [dB(uV)]	Factor [dB(1/m)]	Level QP [dB(uV/m)]	Limit [dB(uV/m)]	Margin QP [dB]	Height [cm]	Angle [deg]
54.148	V	44.0	-24.5	19.5	30.0	10.5	300.0	45.4
127.559	V	31.1	-18.3	12.8	30.0	17.2	100.0	27.2
128.000	H	33.1	-18.6	14.5	30.0	15.5	400.0	195.3
332.303	H	39.3	-15.5	23.8	37.0	13.2	200.0	255.8
333.000	V	35.9	-14.9	21.0	37.0	16.0	100.0	46.8
974.573	V	28.4	-1.7	26.7	37.0	10.3	200.0	1.9
990.220	H	28.1	-2.3	25.8	37.0	11.2	400.0	251.9

Note) Receiving antenna polarization : Horizontal and/or Vertical

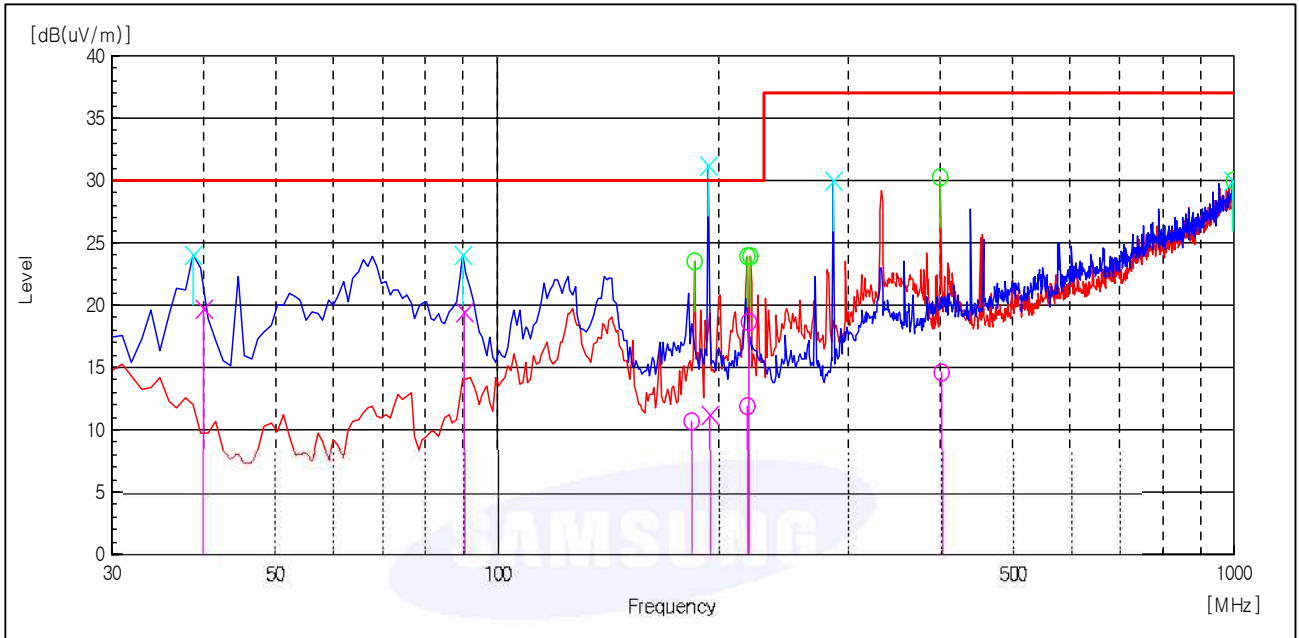
Test Distance : 10m, Antenna Height : 1 to 4 meters

Level QP (Quasi-Peak) = Reading QP + Factor (Antenna Factor + Cable Loss - Amp. Gain)

Margin QP (Quasi-Peak) = Limit - Level QP

- Operating Mode : USB Printing Mode

Test Graph and Results



Frequency [MHz]	(P)	Reading QP [dB(uV)]	Factor [dB(1/m)]	Level QP [dB(uV/m)]	Limit [dB(uV/m)]	Margin QP [dB]	Height [cm]	Angle [deg]
40.031	V	38.2	-18.4	19.8	30.0	10.2	249.0	358.9
90.095	V	40.4	-20.9	19.5	30.0	10.5	249.0	1.0
183.414	H	31.0	-20.3	10.7	30.0	19.3	249.0	202.2
194.252	V	31.1	-19.9	11.2	30.0	18.8	151.0	336.6
218.758	H	31.8	-19.8	12.0	30.0	18.0	352.0	69.1
220.023	H	38.5	-19.8	18.7	30.0	11.3	242.0	26.7
401.589	H	25.3	-10.7	14.6	37.0	22.4	145.0	1.2

Note) Receiving antenna polarization : Horizontal and/or Vertical

Test Distance : 10m, Antenna Height : 1 to 4 meters

Level QP (Quasi-Peak) = Reading QP + Factor (Antenna Factor + Cable Loss - Amp. Gain)

Margin QP (Quasi-Peak) = Limit – Level QP

4.2.3.2 Above 1GHz results(1 ~ 2GHz)

- **Operating Mode : Standby Mode**

Peak Measurement

Frequency [MHz]	POL	Reading PK [dB(uV)]	Factor [dB(1/m)]	Level PK [dB(uV/m)]	Limit [dB(uV/m)]	Margin PK [dB]	Height [cm]	Angle [deg]
1979.96	V	46.9	-1.7	45.2	74.0	28.8	106.0	263.4
1993.99	H	46.7	-1.6	45.1	74.0	28.9	106.0	331.8

Average Measurement

Frequency [MHz]	POL	Reading AV [dB(uV)]	Factor [dB(1/m)]	Level AV [dB(uV/m)]	Limit [dB(uV/m)]	Margin AV [dB]	Height [cm]	Angle [deg]
1979.96	V	18.9	-1.7	17.2	54.0	36.8	106.0	270.4
1993.99	H	22.6	-1.7	20.9	54.0	33.1	106.0	339.7

Note1) Any emissions that do NOT exceed average limit were not tested with average detector mode.

Note2) Receiving antenna polarization : Horizontal and Vertical

Level P K(Peak) = Reading PK(Peak) + Factor(Antenna Factor + Cable Loss - Amp. Gain)

Level AV (Average) = Reading AV (Average) + Factor(Antenna Factor + Cable Loss - Amp. Gain)

Margin PK (Peak) = Limit – Level PK (Peak)

Margin AV (Average) = Limit – Level AV (Average)

- **Operating Mode : USB Printing Mode**

Peak Measurement

Frequency [MHz]	POL	Reading PK [dB(uV)]	Factor [dB(1/m)]	Level PK [dB(uV/m)]	Limit [dB(uV/m)]	Margin PK [dB]	Height [cm]	Angle [deg]
1328.66	V	59.7	-6.9	52.8	74.0	21.2	100.0	359.6
1663.33	H	58.1	-4.1	54.0	74.0	20.0	100.0	80.2
1665.33	V	61.0	-4.1	56.9	74.0	17.1	100.0	58.7

Average Measurement

Frequency [MHz]	POL	Reading AV [dB(uV)]	Factor [dB(1/m)]	Level AV [dB(uV/m)]	Limit [dB(uV/m)]	Margin AV [dB]	Height [cm]	Angle [deg]
1330.89	V	29.9	-6.9	23.0	54.0	31.0	100.0	0.3
1662.42	V	22.7	-4.1	18.6	54.0	35.4	100.0	59.3
1663.46	H	19.0	-4.1	14.9	54.0	39.1	100.0	79.8

Note1) Any emissions that do NOT exceed average limit were not tested with average detector mode.

Note2) Receiving antenna polarization : Horizontal and Vertical

$$\text{Level P K(Peak)} = \text{Reading PK(Peak)} + \text{Factor(Antenna Factor + Cable Loss - Amp. Gain)}$$

$$\text{Level AV (Average)} = \text{Reading AV (Average)} + \text{Factor(Antenna Factor + Cable Loss - Amp. Gain)}$$

$$\text{Margin PK (Peak)} = \text{Limit} - \text{Level PK (Peak)}$$

$$\text{Margin AV (Average)} = \text{Limit} - \text{Level AV (Average)}$$

Appendix – EUT photography



Front View



Rear View



Left View



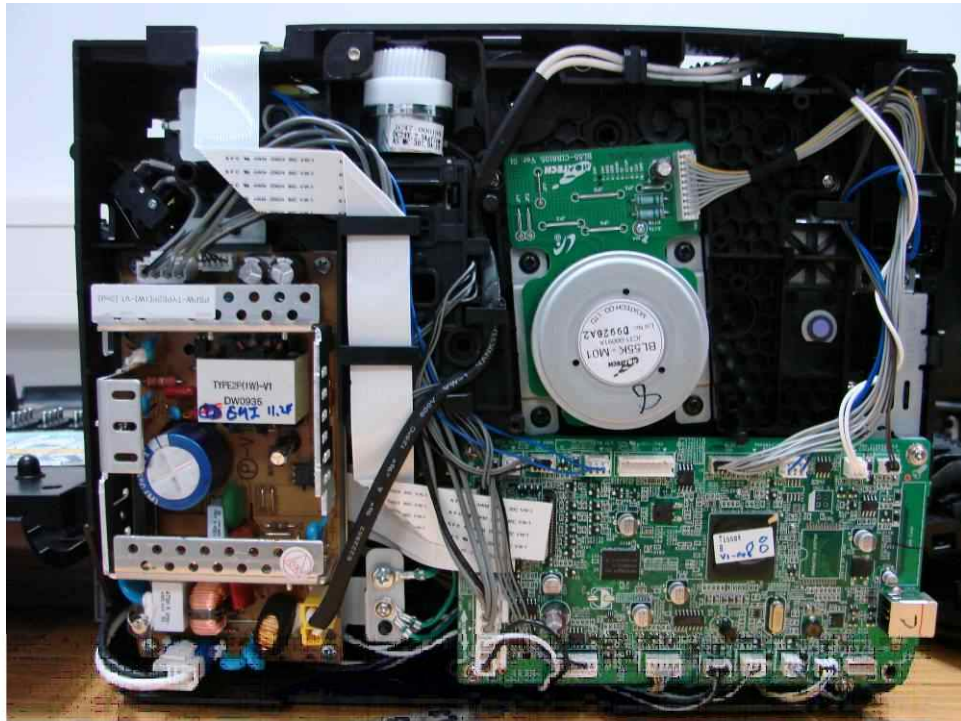
Right View



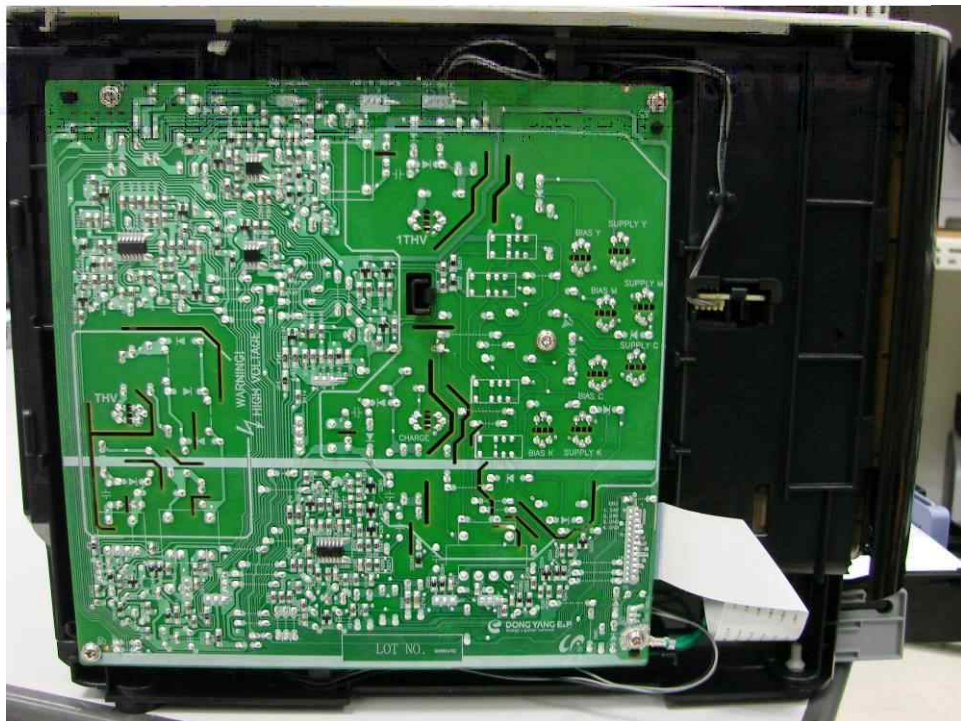
Inside View – Front



Inside View – Rear



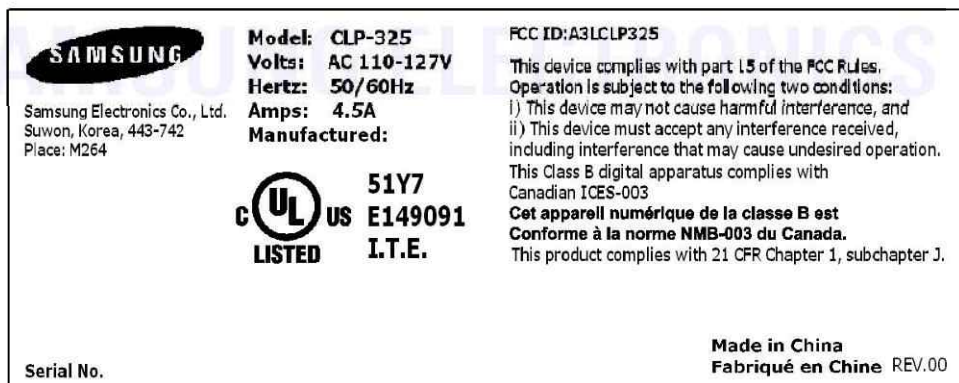
Inside View – Left



Inside View – Right



Label Location



Label