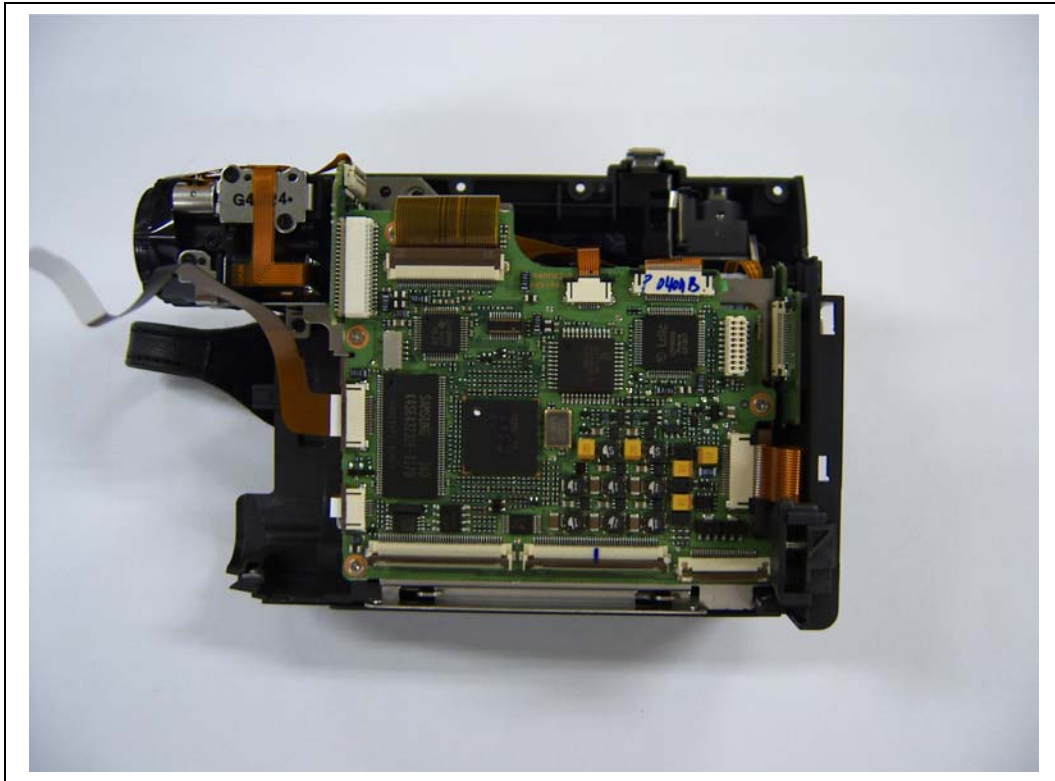


SCD6050 Internal photos

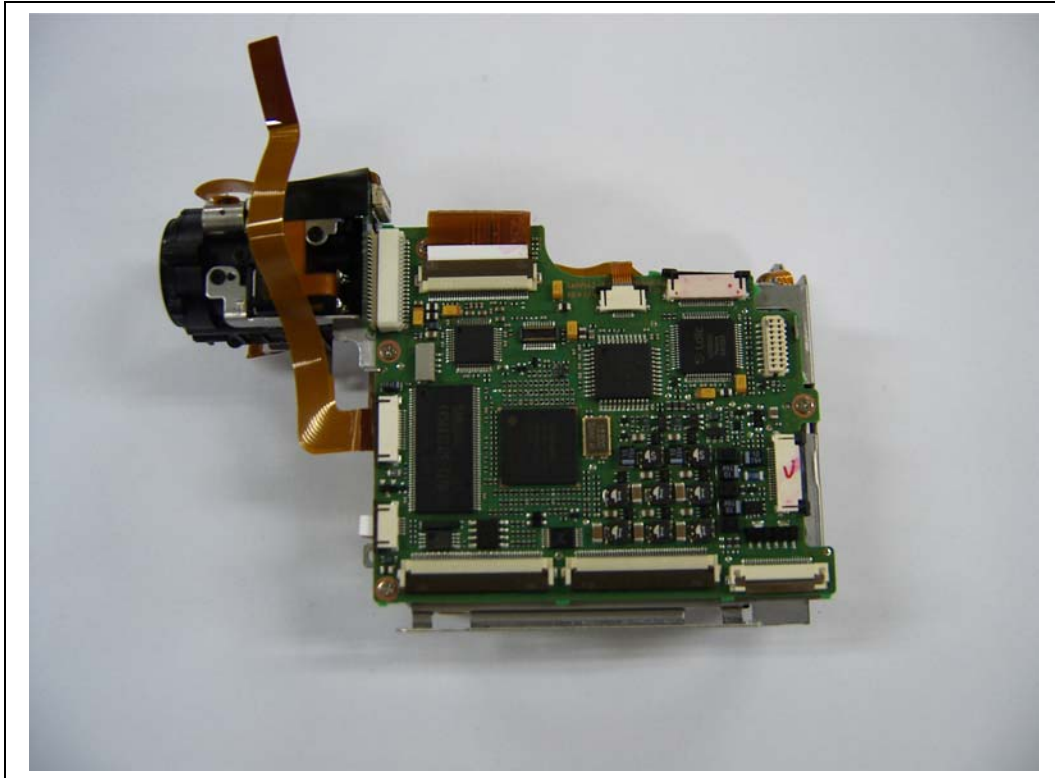


EMC Compliance Ltd.

82-1, JEIL-RI, YANGJI-MYUN, YONGIN-CITY, KYUNGGI-DO, KOREA
TEL: 82 31 336 9919 FAX : 82 31 336 4767

This test report shall not be reproduced except in full, Without the written approval

Main board

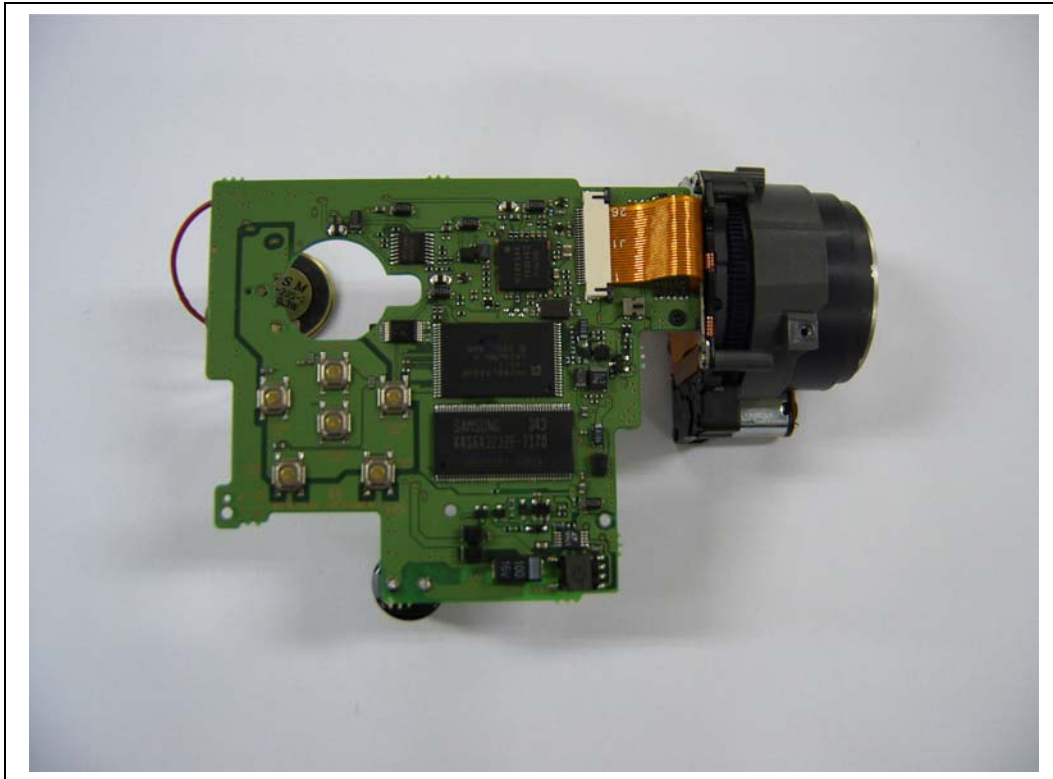


EMC Compliance Ltd.

82-1, JEIL-RI, YANGJI-MYUN, YONGIN-CITY, KYUNGGI-DO, KOREA
TEL: 82 31 336 9919 FAX : 82 31 336 4767

This test report shall not be reproduced except in full, Without the written approval

Sub board

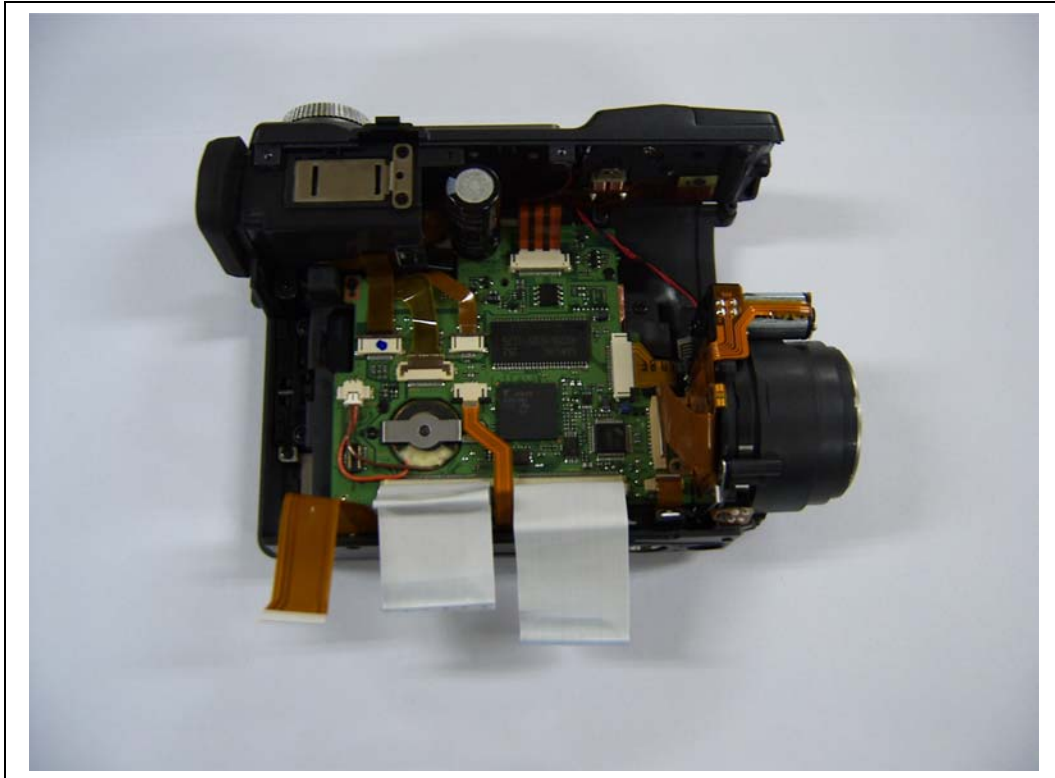


EMC Compliance Ltd.

82-1, JEIL-RI, YANGJI-MYUN, YONGIN-CITY, KYUNGGI-DO, KOREA
TEL: 82 31 336 9919 FAX : 82 31 336 4767

This test report shall not be reproduced except in full, Without the written approval

Camera Board



EMC Compliance Ltd.

82-1, JEIL-RI, YANGJI-MYUN, YONGIN-CITY, KYUNGGI-DO, KOREA
TEL: 82 31 336 9919 FAX : 82 31 336 4767

This test report shall not be reproduced except in full, Without the written approval

Tape Head Board



EMC Compliance Ltd.

82-1, JEIL-RI, YANGJI-MYUN, YONGIN-CITY, KYUNGGI-DO, KOREA
TEL: 82 31 336 9919 FAX : 82 31 336 4767

This test report shall not be reproduced except in full, Without the written approval